

09-761



Government of Kerala



# District Hand Book Kottayam

2007

DEPARTMENT OF ECONOMICS & STATISTICS  
KERALA



## PREFACE

The Department of Economics & Statistics has been generating various statistics to cater the needs of Government and other agencies. In addition to state level data, Directorate of Economics and Statistics is also publishing data at District and Panchayat Level.

This book is the outcome of the earnest efforts taken by the personnel working in the district office of Economics & Statistics, Kottayam under the supervision of Sri A.P. Harilal, Deputy Director. I appreciate all staff of the District, who have contributed in the collection of data, tabulation, data entry etc. to bring out such an informative book.

I hereby acknowledge the services of Sri C. Madhavan, Assistant Director, Sri. N. Anslem, Research Officer, Sri P. Jayapalan, Research Assistant, Smt. N. Asha, U.D. Compiler and all other staff in the Publication Division under the guidance of Sri D. Rajan, Additional Director (General) and Smt. V.J. Lathika, Joint Director to make this venture a success within the stipulated time.

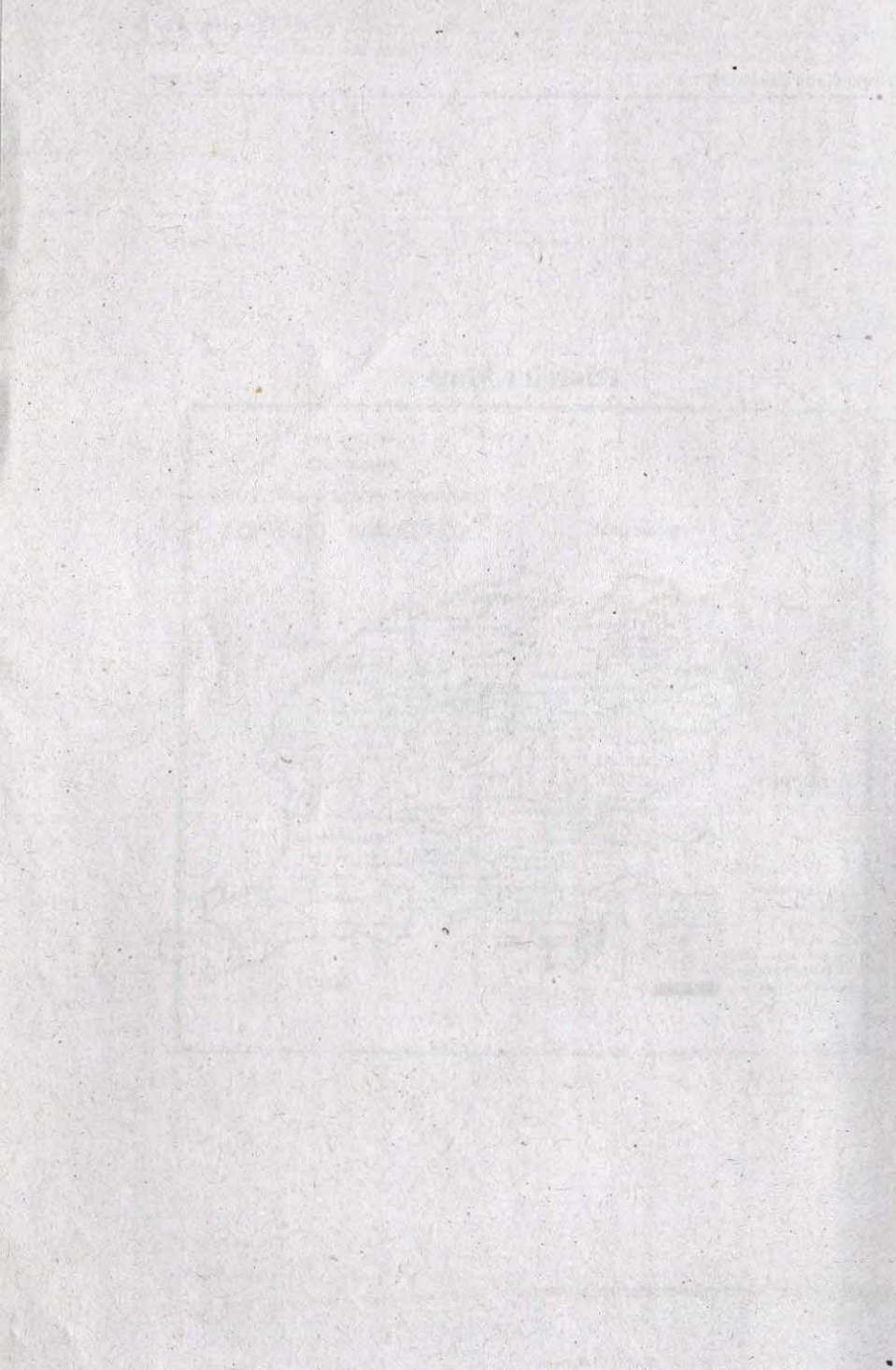
I hope this publication will be useful to all the data users including planners, policy makers, Research workers and Academicians. Suggestions for improvements in its future issue are most welcome.

Thiruvananthapuram,  
20-2-2008.

M.R. BALAKRISHNAN,  
Director.

107-810





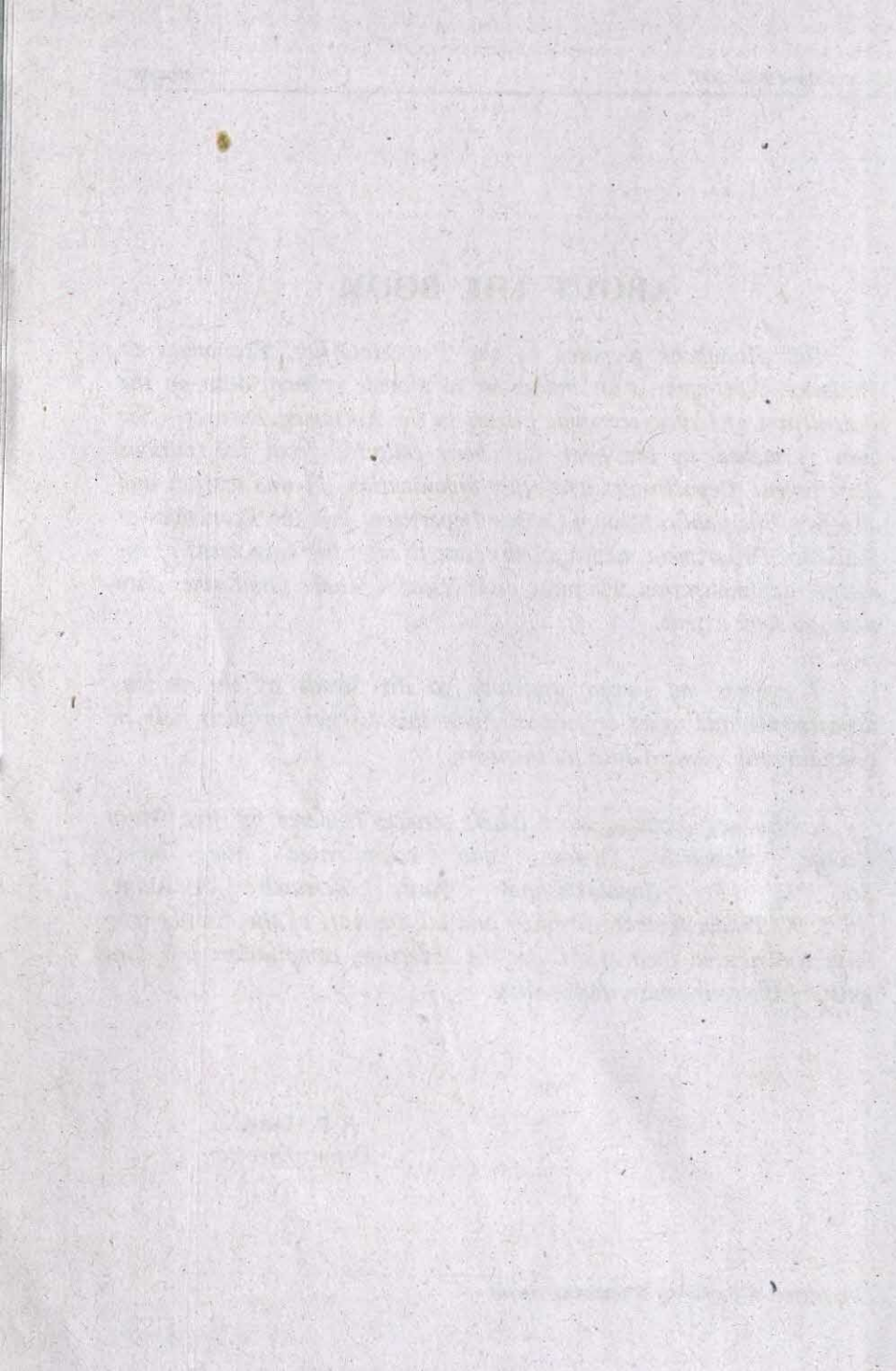
## ABOUT THE BOOK

*This Handbook prepared by the District Office, Economics & Statistics, Kottayam is an endeavour to provide primary data on the agricultural and socio-economic factors in the Kottayam District. The data furnished in the book has been collected from the various Government Departments and other organizations in this district and also from the publications of Census Department and the Economics & Statistics Department, which an objective to cater the data needs of the district administration, Planners, and Research Scholars and other data users, to some extent.*

*I express my sincere gratitude to the Heads of the various departments and other organizations in this district for their help in providing the required data for the work.*

*I also acknowledge the valuable services rendered by Smt. Mary George, Research Officer who co-ordinated the work, Sri K. P. Gopalakrishnan Nair, Research Assistant, Sri T. K. Pradeepkumar, Compiler and all the staff of the district who have contributed their efforts for the collection, compilation and data entry of the contents in this venture.*

A. P. HARILAL,  
Deputy Director.





## CONTENTS

<i>Table</i>	<i>Title</i>	<i>Page</i>
1.	GENERAL	1
1.1	No. of Administrative/Development Units	1
1.2	Population and other Demographic Particulars 2001	2
1.3	Religion wise Population 2001	2
1.4	No. of Literates 2001	2
1.5	SC / ST Population 2001	3
1.6	Distribution of Population and work participation rate 2001	3
1.7	Distribution of Main Workers 2001	3
2.	AGRICULTURE	4
2.1	Land Utilization pattern 2004-05	4
2.2	Area under Crops 2004-05	5
2.3	Production of Important Crops 2004-05	8
2.4	Estimated Area and Production of Rice Autumn 2004-05	9
2.5	Estimated Area and Production of Rice Winter 2004-05	10
2.6	Estimated Area and Production of Rice Summer 2004-05	10
2.7	Estimated Productivity of Crops	11
2.8	Net Area Irrigated (Source wise)	11
2.9	Gross Area under Irrigation (Crop wise)	12
2.10	Physical Achievement under Sericulture	12
2.11	Soil Types	13
2.12	Range wise area of Forest 2006	14
2.13	Details of Krishi Bhavan and allied Institutions	14
3.	ANIMAL HUSBANDRY 2005-06	
3.1	Live Stock Population	15
3.2	Veterinary Institutions	15
3.3	Cattle Breeding Activities	16
3.4	No. of Anti rabies vaccination done	16
3.5	Dairy Development 2005-06	16

<i>Table</i>	<i>Title</i>	<i>Page</i>
4.	FISHERIES	
4.1	Distribution of Fishermen Population 2004-05	17
4.2	Details of fisheries	17
5.	INDUSTRIES	
5.1	Details of Small Scale Industrial Units Registered during the year 2005- 06	18
5.2	Working Status of Small Scale Units	18
5.3	Category wise details of registered SSI Units	18
5.4	Handicraft Industrial Co-operative Societies	19
5.5	Handloom Co-operative Societies	19
5.6	Mechanized (Loom) Co-operative Societies	19
5.7	No. of Cashew Factories and Workers	20
5.8	No. of Medium & Large Scale Industries	20
5.9	No. of Coir Co-operative Societies	20
5.10	Khadi & Village Industries	21
6.	EMPLOYMENT 2006	
6.1	Unemployment	22
6.2	Financial assistant through employment	22
6.3	Employment trends	22
7.	TRANSPORT & COMMUNICATION	
7.1	Length of Roads	23
7.2	No. of Registered Motor Vehicles	23
7.3	Communication Facilities	23
8.	EDUCATION 2006-07	
8.1	No. of Schools	24
8.2	No. of Schools other than State Syllabus	25
8.3	No. of Higher Secondary Schools	25
8.4	No. of Vocational Higher Secondary Schools	25
8.5	No. of Arts & Science Colleges	25
8.6	No. of Professional Colleges	26
8.7	No. of Industrial Training Institutions	27
8.8	Institutions under SC Development Department	27
8.9	Institutions under ST Development Department	27

<i>Table</i>	<i>Title</i>	<i>Page</i>
9.	TOURISM 2005	
9.1	Important Tourist Places	28
9.2	Arrival of Tourist	28
9.3	Month wise Tourist arrivals	28
9.4	Country wise arrival of Tourist	28
10.	HEALTH AND FAMILY WELFARE	
10.1	Medical Institutions—Allopathic	30
10.2	Medical Institutions—Ayurveda	30
10.3	Medical Institutions—Homoeopathy	30
10.4	Private Medical Institutions	31
10.5	Medical Institutions—ESI	31
11.	CO-OPERATION & BANKING	
11.1	Banks	32
11.2	Societies	32
11.3	District Credit Plan Performance	33
11.4	District Credit Plan allocation	33
11.5	Details of the key business indicators of Commercial Banks	34
11.6	Statement of demand correction overdues of priority sector	35
11.7	District Credit Plan targets (Sector wise)	35
12.	ANNUAL PLAN	
12.1	Expenditure on SCP & TSP 2004-05	37
12.2	Expenditure on SCP & TSP 2005-06	38
13.	STATE INCOME	
13.1	Net District/State Domestic Product at Constant Price	39
13.2	Net District/State Domestic Product at Current Price	40
13.3	Gross Domestic Product at Constant Price	41
13.4	Gross Domestic Product at Current Price	42
13.5	Income & Expenditure 2003-04 (Provisional)	43

Table	Title	Page
14. PUBLIC DISTRIBUTION SYSTEM		
14.1	Public Distribution details	44
14.2	Details of APL, BPL, AAY, ANP Cards	45
14.3	Details of Kerosene Dealers	45
14.4	Details of Population, Unit, Ration Cards, Permits & Ration Shops	45
14.5	Details of Ration Dealers	46
14.6	Requirement of Kerosene	46
14.7	Allotment, Lifting and Off-take of Rice	47
15. RURAL DEVELOPMENT		
15.1	Swarnajayanthi Swarozgar Yojana	48
15.2	Indira Awaz Yojana	48
15.3	Sampoorna Gramina Rozgar Yojana	49
15.4	Social Welfare Institutions	49
16. POLICE		
16.1	Police Offices	50
16.2	Details of Crimes	50
16.3	Details of Road Accidents	50
16.4	Details of Two wheeler road accidents	50
16.5	Offences against women	51
16.6	Suicides	51
16.7	Accidental death by natural causes	51
16.8	Accidental death by unnatural causes	51
16.9	Offences against SC/ST	51
17. MISCELLANEOUS		
17.1	Number of Beneficiaries as on 31-3-2006	52
17.2	Social and Cultural Institutions 2006	52
17.3	Scheduled Caste & Scheduled Tribe Colonies	53
17.4	Families below poverty line	53
17.5	No. of seats reserved for women in LSGs.	53
17.6	Water Resources	54
17.7	Irrigation work details—2006-07	54
	Important Offices with Phone Numbers	55
	Arts & Science Colleges	56
	Teacher Training Colleges	57
	Source of Data	57

## 1. GENERAL

## 1.1 Number of Administrative/Development Units

	<i>District</i>	<i>State</i>
1 Area (in Sq. Km.)	2208	,38863
2 Number of revenue divisions	2	21
3 Number of Taluks	5	63
4 Revenue Villages	95	1453
5 Community Development Blocks	11	152
6 Municipalities	4	53
7 Municipal Wards	118	1756
8 Corporations	Nil	5
9 Corporation Divisions	Nil	316
10 Statutory Towns	4	60
11 Panchayats	75	999
12 Grama Panchayat Wards	1151	16139
13 Assembly seats	10	140
14 Parliament seats	1	20

## 1.2 Population and other Demographic Particulars – 2001

<i>Population</i>	<i>District</i>	<i>State</i>
Male	964926	15468614
Female	988720	16372760
Total	1953646	31841374
Density (per sq. km.)	885	819
Sex Ratio		
General	1025	1058
Child	962	960
Child Population	212622	3793146
Percentage decadal growth rate	6.86	9.43
Literacy Rate		
Male	97.34	94.24
Female	94.35	87.72
Total	95.82	90.86
Number of Households	434520	6726356

## 1.3 Religion Wise Population 2001

Hindus	963497	17883449
Muslims	116686	7863842
Christians	871371	6057427
Others	2092	36656
<b>Total</b>	<b>1953646</b>	<b>31841374</b>

## 1.4 Number of Literates 2001

	<i>District</i>	<i>State</i>
Male	833748	12753602
Female	834518	12732086
<b>Total</b>	<b>1668266</b>	<b>25485688</b>

## 1.5 SC /ST Population 2001

	Scheduled Caste		Scheduled Tribe	
	District	State	District	State
Male	73885	1525114	8972	180169
Female	76397	1598827	9368	184020
<b>Total</b>	<b>150282</b>	<b>3123941</b>	<b>18340</b>	<b>364189</b>

## 1.6 Distribution of population and work participation rate 2001

	District	State
1 Population	1953646	31841374
2 Agricultural workers	84907	1620851
3 Cultivators	50201	724155
4 Household industry workers	21383	369667
5 Other workers	485666	7569214
<b>6 Total workers</b>	<b>642157</b>	<b>10283887</b>
7 Non workers	1311489	21557487
8 Work participation rate	32.87	32.3

## 1.7 Distribution of main workers 2001

Cultivators	44116	740403
Agricultural Workers	57650	1653601
Others	437843	5842737
<b>Total Main Workers</b>	<b>539609</b>	<b>8236741</b>

## 2. AGRICULTURE

## 2.1 Land Utilization Pattern (In hect.) 2005-06

Sl. No.		2005-06	
		District	State
1	Total Geographical Area	220442	3886287
2	Forest	8141	1081509
3	Land put to non Agricultural area	24388	370322
4	Barren and Uncultivable land	1498	26457
5	Permanent pastures & other grazing land	0	274
6	Land under misc. tree crops	203	9526
7	Cultivable waste	2712	66133
8	Fallow other than current fallow	3011	45171
9	Current fallow	5538	70166
10	Net area sown	168800	2132483
11	Area sown more than once	50871	853244
12	<b>Total cropped area</b>	<b>219671</b>	<b>2985727</b>



## 2.2 Area Under Crops 2004-05 &amp; 2005-06 (in hect.)

Sl. No.	Crops	2004-05		2005-06	
		District	State	District	State
1	<b>Paddy</b>				
	Autumn	2881	105349	3937	98256
	Winter	7108	148893	6109	155629
	Summer	3172	35732	2511	21857
	<b>Total</b>	<b>13161</b>	<b>289974</b>	<b>12557</b>	<b>275742</b>
2	Jawar	0	2566	0	2450
3	Ragi	0	1383	0	414
4	Other cereals	0	955	0	11
	<b>Total cereals/ millets</b>	<b>13161</b>	<b>294878</b>	<b>12557</b>	<b>278617</b>
5	<b>Pulses including Tur</b>				
	Autumn	0	617	0	1333
	Winter	0	4476	9	6660
	Summer	455	3335	93	2569
	<b>Total</b>	<b>455</b>	<b>8428</b>	<b>102</b>	<b>10562</b>
	<b>Total Food Grains</b>	<b>13616</b>	<b>303306</b>	<b>12659</b>	<b>289179</b>
6	<b>Sugar Crops</b>				
	Sugar cane	47	1921	14	1222
	Palmyra	423	5932	419	5622
	<b>Spices and Condiments</b>				
7	Pepper	9828	237669	9482	237998
8	Vanila	-	-	842	3273
9	Ginger	198	9991	225	12226
10	Turmeric	136	2881	160	3384
11	Cardamom	200	41378	200	41367
12	Arecanut	2109	107572	2081	108590
13	Tamarind	498	19564	494	18747
14	Cloves	96	841	95	937

Sl. No.	Crops	2004-05		2005-06	
		District	State	District	State
15	Nutmeg	785	10780	795	10984
16	Cinnamon	24	328	26	326
17	Garlic	0	306	0	65
	<b>Total Spices and Condiments</b>	<b>13674</b>	<b>431310</b>	<b>14400</b>	<b>437897</b>
18	<b>Fresh Fruits</b>				
a	Jack	4314	97536	4202	94902
b	Mango	3242	90631	3144	87965
c	Banana	3200	58866	3342	61400
d	Other plantains	3763	54612	2897	55222
e	Pineapple	918	12680	934	12775
f	Pappaya	1285	19305	1226	18895
g	Other fresh fruits	875	11054	882	10586
	<b>Total Fresh Fruits</b>	<b>17597</b>	<b>344684</b>	<b>17614</b>	<b>341745</b>
19	Dry Cashew fruits	688	81547	638	78285
	<b>Total Fruits</b>	<b>18285</b>	<b>426231</b>	<b>18252</b>	<b>420030</b>
20	Tubers	1977	28174	1678	26188
21	Sweet potato	1	836	3	711
22	Tapioca				
	Autumn	568	15435	669	14923
	Winter	2814	35731	2290	34651
	Summer	2358	37320	2768	40965
	<b>Tapioca Total</b>	<b>5740</b>	<b>88486</b>	<b>5727</b>	<b>90539</b>
	<b>VEGETABLES</b>				
23	Drumstick	837	22049	800	21138
24	Bitterguard	209	2214	258	2129
25	Snakeguard	295	1086	283	1153
26	Ladies Finger	17	1057	24	1134
27	Brinjal	57	655	65	965
28	Amaranths	16	430	0	-
29	Green Chillies	25	823	11	1231

Sl. No.	Crops	2004-05		2005-06	
		District	State	District	State
30	Other Vegetables	1207	26837	1169	19506
	<b>Total Vegetables</b>	<b>2663</b>	<b>55151</b>	<b>2610</b>	<b>47256</b>
	<b>Oil Seeds</b>				
31	Groundnut	0	1346	0	3299
32	Sesamum	1	883	8	600
33	Coconut	40532	899267	39943	897833
34	Others	89	2311	91	2525
	<b>Total</b>	<b>40622</b>	<b>903807</b>	<b>40042</b>	<b>904257</b>
	<b>Fibre, drugs, and narcotics</b>				
35	Cotton	0	1472	0	2655
36	Betal leaves	31	891	20	780
37	Tobacco	0	40	0	43
38	Lemon grass	0	862	0	764
	<b>Total</b>	<b>31</b>	<b>3265</b>	<b>20</b>	<b>4242</b>
39	<b>Plantation crops</b>				
1	Tea	1963	35040	1963	35043
2	Coffee	0	84644	1735	84644
3	Rubber	111897	480661	112235	494400
4	Cocoa	1506	9339	1327	9570
5	<b>Total</b>	<b>115366</b>	<b>609684</b>	<b>117260</b>	<b>623657</b>
6	Fodder grass		3809	148	3811
7	Green manure crops	625	20106	652	19756
8	Other non-food crops	5701	112400	5767	111121
9	Medicinal plants	20	248	20	239
10	<b>Total</b>	<b>6492</b>	<b>136563</b>	<b>6587</b>	<b>134927</b>
11	<b>Total non-food crops</b>	<b>162511</b>	<b>749512</b>	<b>163909</b>	<b>1667083</b>
12	<b>Total Cropped area</b>	<b>219137</b>	<b>2996293</b>	<b>219671</b>	<b>2985727</b>

### 2.3 Production of Important Crops 2004-05 & 2005-06 (in Tonnes)

Sl. No.	Crops	2004-05		2005-06	
		District	State	District	State
1	<b>Rice</b>				
	Autumn	8270	241824	9138	212520
	Winter	17228	335529	15823	357734
	Summer	7291	89752	6300	59733
	<b>Total</b>	<b>325789</b>	<b>667105</b>	<b>31261</b>	<b>629987</b>
2	Jower	0	1309	0	1248
3	Ragi	0	1119	0	335
4	Other cereals	0	746	0	21
5	Sugar cane	227	15430	90	9165
6	Black pepper	2074	74980	1695	87605
7	Green chillies	23	775	10	1192
8	Pulses	391	8390	88	7940
9	Cured ginger	595	45305	772	56288
10	Curred turmeric	333	6244	367	8237
11	Groundnut	0	996	0	2441
12	Arecanut	1257	110340	1201	119309
13	Tamarind	951	29945	945	28777
14	Mango	18164	525326	17606	511131
15	Jack (nos. in million nuts)	25	348	23	350
16	Banana	29867	475371	28817	491823
17	Other plantain	31649	416115	33886	445333
18	Pineapple	5567	101912	6072	109325
19	Tapioca	162744	2400043	182262	2568284
20	Sweet potato	8	10013	24	9013
21	Pappaya	9252	87561	8827	85481
22	Drumstick	461	23968	433	18875
23	Sesamum	0	260	2	210

Sl. No.	Crops	2004-05		2005-06	
		District	State	District	State
24	Coconut (million nuts)	187	6001	217	6326
25	Cotton (No. of bales of 170 kg. each)	0	2370	0	3452
26	Nutmeg	204	2700	207	2746
27	Tobacco	0	223	0	69
28	Tea	255	49508	72	56384
29	Coffee	N.A.	54300	1005	60175
30	Rubber	162409	690778	163942	739225
31	Cocoa	2465	5061	608	5362
32	Processed Cardamom	25	8616	25	9765
33	Raw cashew nuts	222	60584	269	68262
34	Betal leaves	5545	157635	3311	137392
35	Clove (dry)	8	53	7	61
36	Garlic	0	5202	0	1105

**2.4 Estimated Area and Production of Rice – Autumn**  
(Area in Hectares, Production in Tonnes)

Sl. No.	Rice	2004-05		2005-06	
		District	State	District	State
1	<b>High Yielding</b>				
	Irrigated Area	2584	20798	3675	19665
	Production	7534	52357	8524	40441
	Un Irrigated Area	284	76761	221	71335
	Production	706	178353	524	160308
	<b>Area – Total</b>	<b>2868</b>	<b>97559</b>	<b>3896</b>	<b>91000</b>
	<b>Production – Total</b>	<b>8240</b>	<b>230690</b>	<b>9048</b>	<b>200749</b>
2	<b>Local Varieties</b>				
	Irrigated Area -	0	893	3	123
	Production	0	1046	2	232
	Un Irrigated Area	13	6897	38	7133
	Production	30	10088	88	11539
	<b>Area – Total</b>	<b>13</b>	<b>7790</b>	<b>41</b>	<b>7256</b>
	<b>Production – Total</b>	<b>30</b>	<b>11134</b>	<b>90</b>	<b>11771</b>

### 2.5 Estimated Area and Production of Rice – Winter

(Area in Hectares, Production in Tonnes)

Sl. No.	Rice	2004-05		2005-06	
		District	State	District	State
1	<b>High Yielding</b>				
	Irrigated Area	6980	105514	5989	101427
	Production	17022	250535	15626	251886
	Un Irrigated Area	20	10116	0	9525
	Production	51	22911	0	20681
	<b>Area – Total</b>	<b>7000</b>	<b>115630</b>	<b>5989</b>	<b>110952</b>
	<b>Production – Total</b>	<b>17073</b>	<b>273446</b>	<b>15626</b>	<b>272567</b>
2	<b>Local Varieties</b>				
	Irrigated Area	108	20787	120	16584
	Production	155	39759	197	29065
	Un Irrigated Area	0	12476	0	28093
	Production	0	22324	0	56102
	<b>Area – Total</b>	<b>108</b>	<b>33263</b>	<b>120</b>	<b>44677</b>
	<b>Production – Total</b>	<b>155</b>	<b>62083</b>	<b>197</b>	<b>85167</b>

### 2.6 Estimated Area and Production of Rice – Summer

(Area in Hectares, Production in Tonnes)

Sl. No.	Rice	2004-05		2005-06	
		District	State	District	State
1	<b>High Yielding</b>				
	Irrigated Area	3172	35184	2511	21644
	Production	7291	88794	6300	59381
	Un Irrigated Area	0	122	0	18
	Production	0	350	0	39
	<b>Area – Total</b>	<b>3172</b>	<b>35306</b>	<b>2511</b>	<b>21662</b>
	<b>Production – Total</b>	<b>7291</b>	<b>89144</b>	<b>6300</b>	<b>59420</b>
2	<b>Local Varieties</b>				
	Area Irrigated	0	425	0	195
	Production	0	607	0	313
	Un Irrigated Area	0	1	0	0
	Production	0	1	0	0
	<b>Area – Total</b>	<b>0</b>	<b>426</b>	<b>0</b>	<b>195</b>
	<b>Production – Total</b>	<b>0</b>	<b>608</b>	<b>0</b>	<b>313</b>

### 2.7 Estimated Productivity of Crops 2004-05 & 2005-06 (Productivity in Kgs/hect.)

Sl. No.	Crops	2004-05		2005-06	
		District	State	District	State
1	Paddy				
	Autumn	4369	3494	2321	2163
	Winter	3688	3430	2590	2299
	Summer	3499	3823	2509	2733
2	Coconut in Nos.	4572	6673	5433	7046
3	Arecanut	596	1026	577	1099
4	Tapioca	28353	27123	31825	28367
5	Raw Cashew nuts	323	743	422	872
6	Black pepper	211	316	179	368
7	Banana	9333	8076	8623	8010
8	Rubber	1437	-	1461	1495
9	Plantain	8411	7619	8725	8064
10	Jack (in nos.)	3373	3568	5474	3688
11	Cocoa	568	542	458	560
12	Sesamum	0	294	250	350

### 2.8 Net area irrigated 2004-05 & 2005-06 (Source-wise) (Area in hectares)

Sl. No.	Source	2004-05		2005-06	
		District	State	District	State
1	Government canal	812	101397	745	104106
2	Private canal	23	4729	23	4949
3	Government tanks	0	2159	1	2193
4	Private tanks	98	41824	88	42813
5	Government wells	0	1175	6	1166
6	Private wells	845	107270	856	109216
7	Minor Lift irrigation	54	8591	66	8926
8	Other sources	12945	110678	12861	113854
9	Tube wells	1	15533	1	14227
10	Total	14778	393356	14647	401450

### 2.9 Gross area under irrigation 2004-05 & 2005-06 (Crop-wise) (area in hectares)

Sl. No.	Name of crops	2004-05		2005-06	
		District	State	District	State
1	Paddy	12844	183601	12298	159638
2	Tubers	158	2253	202	2705
3	Vegetables	981	14274	998	15197
4	Coconut	765	157768	450	159912
5	Arecanut	45	36858	49	32727
6	Cloves	85	540	84	543
7	Nutmug	401	5745	398	6269
8	Other spices & Condiments	188	3403	196	3791
9	Banana	1440	30265	3246	57660
10	Betel leaves	31	891	16	716
11	Sugarcane	4	1630	9	1032
12	Other crops	820	18163	892	19876

### 2.10 Physical Achievement under Sericulture 2004-05

Sl. No.	Name of crops	2004-05	
		District	State
1	Mulberry Cultivation (acres)	25	365
2	No. Farmers	42	546
3	Dfls Supplied (Nos.)	5675	210155
4	Cocoon Production (in KG)	1785	92
5	Silk Production (in Matric Ton)	0	..



## 2.11 Soil Types

Sl. No.	Land Form	Major Soils Associations	Are in hect.	Existing Crops	Additional Crops
I	Low Land	1. Muthoor – Kurichy	10240	Paddy	Vanila, Vegetables
		2. Udayamperoor Ayoor	6920	Paddy, Coconut, Banana, Pepper	
		3. Changanacherry Muthoor Thakazhy	8520	Paddy	
		4. Manjoor – Champakulam – Thakazhy	7400	Paddy	
		5. Purakkadu	800	Paddy	
		6. Champakulam – Manjoor - Vecnoor	10280	Paddy	
II	Mid Land	1. Arpookkara Kottapuram Parampuzha.	32880	Rubber, Coconut, Pepper, Banana	Cocoa, Vanila
		1. Parampuzha Marady	13280	Coconut, Paddy, Banana, Rubber	Pepper, Vegetables, Pulses
		2. Vazhakkulam			
III	Mid up land	1. Pampady – Chirakkadavu	62140	Rubber, Coconut, Arecanut, Pepper, Pineapple	Cocoa, Vanila, Tubers
III	Mid up land	1. Pampady – Chirakkadavu	62140	Rubber, Coconut, Arecanut, Pepper, Pineapple	Cocoa, Vanila, Tubers
		2. Lakkattoor-Vallichira-Annikkad	15880	Rubber, Coconut, Pepper	Pineapple, Banana, Vanila
		3. Kodumon Paipara Uzhavoor	27900	Rubber, Pineapple, Coconut	Fruit crops

I	Up Land	1. Mavady Kallooppara Kalaketty	- - -	11480	Rubber, Coconut, Forest Trees	Cashew
V	High Land	1. Nellappara Mavady	- -	4360	Forest Trees, Grasses, Rubber	

### 2.12 Range-wise Area of Forest (in sq. kms) 2007

Name of Division (Range-wise)	Reserve forest	Vested forest	Total
<b>KOTTAYAM DIVISION</b>			
1. Erumely Range	158.01087	4.171	162.18187
2. Kumily Range	261.633	3.959	265.592
3. Ayyappancoil Range	64.242	23.837	88.079
4. Nagarampara Range	143.400	-	143.400
<b>TOTAL</b>	<b>627.28587</b>	<b>31.967</b>	<b>659.25287</b>

### 2.13 Details of Krishi Bhavan and Allied institutions

No. of Krishibhavan	78 Nos.
<b>Other Institutions</b>	
1. Asst. Director of Agricultural Offices	11
2. Asst. Exe. Engineer, Agriculture	1
3. Regional Agri Technology Training Centre, Kozha	1
4. District Soil Testing Laboratory, Kozha	1
5. Mobile Soil Testing Laboratory, Kozha	1
6. Dist. Agricultural Farm, Kozha	1
7. State Seed Farm, Kozha	1
8. State Seed Farm, Valachira	1
9. State Agmark Grading Laboratory	1
10. Parasite Breeding Station, Kottayam	1

## 3. ANIMAL HUSBANDRY

## 3.1 Live stock Population -2005-06

1. No. of crossbred cattle	131814
2. No. of Indigenous cattle (Non descript)	3241
3. Total No. of cattle	135055
4. No. of buffalos	2341
5. No. of Goats	96557
6. No. of Fowls (improved)	988588
7. No. of Ducks	72161
8. No. of Sheep	Nil
9. No. of Pigs	21906

## 3.2 Veterinary Institution as on 31-3-2007

1. No. of Veterinary Hospital	19
2. District Veterinary Centre	1
3. No. of Veterinary Dispensaries	59
4. ICDP & S/c	83
5. RAIC	2
6. Veterinary Poly Clinic	4
7. Buffallow breeding Farm	0
8. Regional Poultry Farm	1
9. Clinical Lab	1
10. Mobile Veterinary Hospital	1
11. Calf Feed Subsidy Scheme	1
12. RP Check Post	0
13. RP Vigilance Unit	1
14. ICDP	0
15. DFZ Unit	0
16. Mobile farm AD Unit	2
17. LMTC	1

### 3.3 Cattle Breeding Activities as on 3-3-2007

	Cattle	Buffallow
1. No. A.I done	64952	799
2. Follow up done	39382	3267
3. Pregnant	22310	88

### 3.4 Number of Anti rabbis vaccination done as on 31-3-2007

Name of Animal	Prophy-lactic vaccination	Post infect-ional vaccination	Death due to Rabies		Total Deaths
			Before Vacci-nation	After Vacci-nation	
1. Cattle	..	13	..	..	..
2. Buffaloes	..	..	..	..	..
3. Goats	..	112	..	..	..
4. Dogs	18583	29	7	..	7
5. Others	22	32	..	..	..

### 3.5 Dairy Development 2006-07

1. No. of Dairy Co-op Societies	249
2. Milk collected during the year 2006-07 (in lr)	19867047
3. Value (Rs.) lakhs	2780
4. No. of Diary Production Units	52
5. Milk used for milk product during the year 2006-07 lit	12161
6. Sales during the year (litre).	19867047
7. Amount Expended for Development Schemes (Rs.)	3366420

## 4. FISHERIES

## 4.1 Distribution of Fishermen Population 2004-05

<b>Marine</b>		
	Male	NIL
	Female	NIL
	Children	NIL
	Total	NIL
<b>Inland</b>		
	Male	11175
	Female	10641
	Children	4717
	Total	26533
	<b>Marine &amp; Inland Total</b>	<b>26533</b>

## 4.2 Details of fisheries

Length of cost line	..
Number of Fishing villages	
Marine	NIL
Inland	8
Number of Fisheries Co-operative	38
Number of Domestic Fish Markets	95
Annual Fish Production (in Ton.)	
Marine	NIL
Inland	4309
Number of beneficiaries of saving-cum-relief scheme	..
Marine	NIL
Inland	1375

## 5. INDUSTRIES

## 5.1 Details of Small Scale Industrial Units Registered during the year 2005- 06

1. No. of SSI Units Promoted by	
(a) SC/ST	2
(b) Women	73
(c) Others	246
	<b>Total</b>
	<b>321</b>
2. No. of SSI Tiny Units	297
3. No. of SSBE Units	23
4. Investment (Rs.in lakhs)	3036.85
5. Value of goods and services produced (Rs. in lakhs)	8319.16
6. Employment provided (Nos.)	1866
7. No. of Units assisted with Subsidy	37
8. Amount of Subsidy (in lakhs)	94.88
9. No. of Units assisted with Margin Money	17
10. Amount of Margin Money (in lakhs)	27.82
11. No. of Units assisted with Sales Tax exemption	0
12. Amount of Tax exemption	0

## 5.2 Working Status of Small Scale Units as on 31-3-2007

<b>Total No. of Units</b>	
No. of Units identified as Sick	
„ Registered	419
„ Revived	260

## 5.3 Category-wise details of Regd: SSI Units as on 31-3-2007

1. Agricultural based	341
2. Wood based	1263
3. Animal product based	0
4. Textile based	5166

5. DTP/IT based	424
6. Engineering	1332
7. Construction equipment based	772
8. Clay based	197
9. Traditional based	16
10. Repair and Service	2317
11. Food Processing Units	3101
12. Miscellaneous	5363
<b>Total</b>	<b>20292</b>

#### 5.4 Handicraft Industrial Co-operative Societies as on 31-3-2007

Promoted by SC/ST	22
"    Women	33
"    Others	86
<b>Total</b>	<b>141</b>

#### 5.5 Handloom Co-operative Societies as on 31-3-2007

1. No. of Societies	17
2. Liquidated	9
3. Dormant	1
4. Working	7
5. No. of Members	302

#### 5.6 Mechanized (loom) Co-op. Societies as on 31-3-2007

1. No. of Societies	1
2. Working	1
3. No. of Looms	232
4. Members	195

**5.7 No. of Cashew Factories and Workers as on 31-3-2007**

	Nos.	Licensed Workers
1. Capex		NIL
2. KSCDC		NIL
3. Private		NIL
4. Packing centers		NIL
<b>Total</b>		

**5.8 No. of Medium and Large Scale Industries as on 31-3-2007**

1. Central Govt.		2
2. State Govt.		1
3. Co-op. Sector		4
4. Pvt. Sector		9
<b>Total</b>		<b>16</b>

**5.9 No. of Coir Co-operative Societies as on 31-3-2007**

1. Working		24
2. Dormant		1
3. Liquidated		6
4. New Societies not yet started		0
<b>Total</b>		<b>31</b>
5. No. of Registered Workers		20622
6. No. of Registered Members		20622
Male		9409
Female		11213
7. SC		825
8. ST		14
9. No. of Workers employed during 2005-2006		5961
10. No. of Mats and Mating Societies		3
11. Working		2
12. No. of Registered Workers		251
Male		192
Female		59



13. SC	23
14. No. of Defiburing Mills Societies	2
15. No. of Pvt. Units	8000
<b>Production of Coir</b>	
16. Through Traditional Rat (in qtls)	8449
17. Mechanised (in qtls)	8901
<b>Total</b>	<b>17350</b>
18. Total Value (in lakhs)	19157997

### 5.10 Khadi and Village Industries as on 31-3-2007

1. No. of units assisted with REGP	33
2. Amount allotted (lakhs)	6320000
3. Employment provided ( No.)	1107
4. Total No. of Spinning Units	13
5. No. of Workers	148
6. Production of Yarn ( No. of Hanks)	367351
7. Value of goods purchased (Rs.)	1351383.49
8. Total No. of Weaving Units	4
9. No. of Workers	36
10. Production of cloth (in sq.m)	9882.53
11. Value of goods produced (Rs.)	635746.02
12. No. sales outlets	17
13. Sales during 2006-07 (Rs. in lakhs)	63.38
14. No. of Readymade Garment Units	1

## 6. EMPLOYMENT

## 6.1 Unemployment as on 31-3-2007

1. No. of candidates Reg. during the reporting year	12295
2. Total Work Seekers as on 31-3-2007	76500
3. Placement given	312
4. Total No. of registered SC candidates during the reporting year	419
5. Total No. of SC Work Seekers	6876
6. Placement given to SC during the year	32
7. No. of ST candidates registered	32
8. Total No. of ST Work Seekers	165
9. Placement given to ST during the year	9
10. No. of Physically Handicapped candidates registered	51
11. Total No. of PH Work Seekers	1143
12. Placement given to PH Work Seekers during 2004-05	44

## 6.2 Financial Assistance through Employment during the year 2006-07

1. Amount allotted for Self Employment Scheme (lakhs)	647424
2. No. of beneficiaries	71
3. Unemployment allowance (lakhs)	31214760
4. No. of beneficiaries	20322
5. Amount allotted under the Scheme KESRU (lakhs)	647424
6. Subsidy disbursed through KESRU (in Rs.)	647424

## 6.3 Employment Trends

Sector	No. of persons employed in				
	31-3-06	30-6-06	30-9-06	31-12-06	31-3-07
Public Sector	32731	32756	32735	32726	32826
Private Sector	27231	27236	27537	27700	27704
<b>Total</b>	<b>59962</b>	<b>59992</b>	<b>60272</b>	<b>60426</b>	<b>60530</b>

## 7. TRANSPORT AND COMMUNICATION

## 7.1 Length of Roads in Km. as on 31-3-2006

1. National Highway	78
2. State Highway	398
3. PWD Roads	2173.427
4. Village Roads	16.158
<b>Total</b>	<b>2267.585</b>
5. Railway track	55.5
6. Water Transport	-

## 7.2 Number of Registered Motor Vehicles as on 31-3-2006

1. Two Wheelers	395136
2. Passenger Vehicles (non-transport)	303552
3. Passenger Vehicles (transport)	280032
4. Goods Carrier	232080
5. Tractor Trailer	5438
6. Others	Nil
<b>Total</b>	<b>1216238</b>

## 7.3 Communication Facilities

1. Head Post Offices	5
2. Sub Post Offices	111
3. E. D. Sub P.O's	42
4. E. D. Branch P.O's	40
<b>Total</b>	<b>198</b>

## 8. EDUCATION

## 8.1 Number of Schools 2006-07

High Schools (Including HSS and VHSS)	District	State
Govt.	62	998
Pvt. Aided	158	1426
Pvt. Un aided	16	366
<b>Total</b>	<b>236</b>	<b>2790</b>
<b>U. P. Schools</b>		
Govt.	70	954
Pvt. Aided	122	1870
Pvt. Un Aided	8	213
<b>Total</b>	<b>200</b>	<b>3037</b>
<b>L. P. Schools</b>		
Govt.	162	2548
Pvt. Aided	274	3992
Pvt. Un Aided	22	277
<b>Total</b>	<b>458</b>	<b>6817</b>
<b>HS + U. P. S + L. P. S</b>		
Govt.	294	4500
Pvt. Aided	554	7288
Pvt. Un Aided	46	856
<b>Total</b>	<b>894</b>	<b>12644</b>
<b>Teachers Training Institute</b>		
Govt.	3	38
Aided	7	64
Un Aided	6	100
<b>Total</b>	<b>16</b>	<b>202</b>
THSS	6	NA
Special School	1	
Private Aided	4	

## 8.2 No. of Schools other than State Syllabus

	District	State
CBSE	61	587
ICSE	8	78
Kendriya Vidyalaya	1	26
Jawahar Navodaya	1	13

## 8.3 No. of Higher Secondary Schools 2006-07

Govt.	49	702
Aided	64	525
Un-aided	13	439
<b>Total</b>	<b>126</b>	<b>1666</b>

## 8.4 No. of Vocational Higher Secondary School (Government)

Government	19	247
Aided	10	128
<b>Total</b>	<b>29</b>	<b>375</b>

## 8.5 No. of Arts and Science Colleges 2006-07

Government	1	38
Aided	21	148
<b>Total</b>	<b>22</b>	<b>186</b>

## 8.6 Professional Colleges

<b>Engineering colleges</b>	<i>District</i>	<i>State</i>
Govt. Aided	1	14
Self Financing	5	70
<b>Total</b>	<b>6</b>	<b>84</b>
<b>Medical colleges</b>		
Govt.	1	5
Self Financing	Nil	9
<b>Total</b>	<b>1</b>	<b>14</b>
<b>Dental colleges</b>		
Govt.	1	3
Self Financing	Nil	8
<b>Total</b>	<b>1</b>	<b>11</b>
<b>B.Sc. MLT</b>		
Govt.	Nil	1
Self Financing (MGU SME)	1	1
<b>Pharmacy Colleges</b>		
Govt.	Nil	2
Self Financing (MGU SME)	1	19
<b>B.Sc. Nursing</b>		
Govt.	1	3
Self Financing	4	19
<b>Homoeo Medical Colleges</b>		
Govt./Aided	1	5
<b>Ayurveda colleges</b>		
Govt./Aided	Nil	5
Self Financing	Nil	7
<b>B.Sc. Agri.</b>		
Govt.	Nil	3
<b>B.Vsc. &amp; AH</b>		
Govt.	Nil	2
<b>B.sc in Forestry</b>		
Govt.	Nil	1
<b>Bachelor of Agri. Eng. and Technology</b>		
Govt.	Nil	1
Govt.	Nil	1

### 8.7 No. of Industrial Training Institutions as on 2006-07

	<i>District</i>	<i>State</i>
Govt. ITI	2	33
Pvt. ITC	18	393
<b>Total</b>	<b>20</b>	<b>416</b>

### 8.8 Institutions under SC Development Department as on 2006-07

<i>Institutions</i>	<i>No.</i>	<i>Students</i>	
		<i>SC</i>	<i>Others</i>
Training Institutes	4	51	6
Model Residential Schools	Nil	Nil	Nil
Nurseries	8	Nil	63
Pre-metric Hostels	4	88	7
Post-metric Hostels	2	52	16
Subsidised Hostels	Nil	Nil	Nil
Sports Hostel	Nil	Nil	Nil
Production-cum-Training Centre	Nil	Nil	Nil
Pre Examination Training Centre	Nil	Nil	Nil
Civil Service Examination Training Centre	Nil	Nil	Nil

### 8.9 Institutions under ST Development Department as on 2006-07

<i>Institutions</i>	<i>District</i>
Ayurveda Dispensary	Nil
Balavadies	Nil
Pre-metric Hostels	2
Training Centres	3
ANM Centres	Nil
Model Residential Schools	1

## 9. TOURISM

## 9.1 Important Tourist Places

Kumarakom	Bharananganam
Vagamon	Elaveezhapoonchira
Erumely	
Vaikom	

## 9.2 Arrival of Tourist During 2006

	District	State
No. of Foreign Tourists	20017	428534
No. of Domestic Tourists	164909	6271724

## 9.3 Month-wise Tourists Arrivals – 2006

Month	Domestic		Foreign	
	District	State	District	State
January	16919	532748	3844	58858
February	13674	469393	3919	56530
March	13780	457435	3327	39584
April	13900	522408	1898	32377
May	17444	610241	943	20470
June	13242	467879	614	16209
July	12952	478701	952	23578
August	15201	511198	2389	28821
September	14917	517659	607	21888
October	21166	543876	2122	28681
November	20319	556297	2855	44421
December	22770	603919	3073	57117
<b>Total 2006</b>	<b>196284</b>	<b>6271724</b>	<b>26543</b>	<b>428534</b>

## 9.4 Country-wise Arrivals of Tourists-2005

Country	District	State
1. Australia	525	9962
2. Austria	149	3360
3. Bahrain	28	3085
4. Bangladesh	48	1520
5. Belgium	607	4827



6.	Brazil	52	634
7.	Canada	697	7527
8.	China	113	1479
9.	Czechoslovakia	18	322
10.	Denmark	69	3060
11.	France	2512	27791
12.	Germany	1434	22861
13.	Iran	43	488
14.	Israel	171	3161
15.	Italy	957	10020
16.	Japan	208	6055
17.	Kenya	13	710
18.	Korea	55	1407
19.	Kuwait	64	1992
20.	Malaysia	68	2939
21.	Maldives	45	32967
22.	Mexico	12	227
23.	Nepal	8	780
24.	Netherlands	361	7554
25.	Newzealand	101	2222
26.	Oman	44	2126
27.	Pakistan	0	93
28.	Phillippines	18	1041
29.	Qatar	4	2502
30.	Russia	143	4331
31.	Soudi Arabia	116	4783
32.	Singapore	212	3094
33.	South Africa	328	4062
34.	Spain	770	4595
35.	Srilanka	73	4741
36.	Sweedan	141	4593
37.	Switzerland	828	8742
38.	Thailand	7	533
39.	U.A.E.	162	3734
40.	U.K.	4849	70423
41.	U.S.A.	2602	27453
42.	Yugoslavya	8	103
43.	Others	1354	42604

## 10. HEALTH AND FAMILY WELFARE 2005-06

### 10.1 Medical Institutions – Allopathic

<i>Name of Institution</i>	<i>No. of Institution</i>	<i>No. of Bed</i>	<i>No. of Doctors</i>
Medical College	1	1286	167
I.C.H.	1	203	
District Hospital	1	374	42
General Hospital	1	300	16
Speciality Hospital	1	56	9
Taluk Hospital	3	424	39
Community Health Centre	9	483	45
Govt. Hospitals	6	340	14
Block PHC	7	178	38
PHC	51	255	75
Family Welfare Centres	228	..	Nil

### 10.2 Medical Institutions—Ayurveda

<b>Hospital (Govt.)</b>	
Nos.	8
Beds	150
Doctors	20
<b>Dispensaries (Govt.)</b>	
Nos.	39
Beds	Nil
Doctors	39

### 10.3 Medical Institutions—Homoeopathy

<b>Hospital (Govt.)</b>	
Nos.	3
Beds	175
Doctors	9

<b>Dispensaries(Govt.)</b>	
Nos.	44
Beds	Nil
Doctors	14

#### 10.4 Private Medical Institutions (2004-05)

<i>System of Medicines</i>	<i>No. of Institutions</i>	<i>No. of beds</i>	<i>No. of I.P./Year</i>	<i>No. of O.P./Year</i>
1. Allopathy	440	4873	286632	3530064
2. Ayurveda	428	299	13260	860352
3. Homoeo	407	14	1212	1138728
4. Unani	4	..	..	2412
5. Sidha	6	..	..	12000
6. Marma	6	20	1080	4536
7. Naturopathy	4	2	240	1320

#### 10.5 E. S. I. Medical Institutions

<i>Hospitals</i>		<i>Nos.</i>
1.	No. of Beds	65
2.	No. of Doctors	17
3.	Total No. of patients admitted (2006-07)	1129
4.	No. of Dispensaries	7
5.	No. of Doctors	10
6.	No. of Homoeo Units	2
7.	No. of Doctors	2
8.	No. of Ayurveda Units	1
9.	No. of Doctors	1

## 11. BANKING AND CO-OPERATION

## 11.1 Banks 2007

Sl.No.	Name of Bank	No.
1.	State Bank of India and Associates	109
2.	Nationalized Commercial Banks	60
3.	Scheduled Commercial Bank	109
4.	Gramin Bank	9
5.	Dist. Co-op. Bank and branches	1
6.	Dist. Co-op. Bank branches	54
7.	Urban Co-op. Bank	9
8.	State Co-op. Bank	Nil
9.	Primary Co-op Agrl. and Rural Devpt. Bank Branches	24

## 11.2 Societies 2007

1.	Primary Agrl. Credit Societies	136
2.	SC/ST Co-op. Societies	23
3.	Employees Co-op. Societies	82
4.	Marketing Co-op. Societies	25
5.	Wholesale traders consumer Co-op. Societies	1
6.	Primary Consumer Co-op. Societies	9
7.	School/College Co-op. Societies	325
8.	Housing Co-op. Societies	18
9.	Labour Contract Co-op. Societies	5
10.	Motor Transport Co-op. Societies	4
11.	Vanitha Co-op. Societies	25
12.	Autowriksha Co-op. Societies	2
13.	Tourism Co-op. Societies	Nil
14.	Hospital Co-op. Societies	4
15.	Education Co-op. Societies	2
16.	Printing Co-op. Societies	5
17.	Other Co-op. Societies	12

### 11.3 District Credit Plan-Performance of Banks

(Rs. in Lakhs)

	Target	Achieve	Achievement %
<b>2004-05</b>			
Farm Sector	568.26	562.39	99
Non-Farm Sector	74.27	77.94	105
Trade and Services	628.39	832.46	132
<b>Total Priority Sector</b>	<b>1270.92</b>	<b>1472.79</b>	<b>116</b>
<b>2005-06</b>			
Farm Sector	690.56	807.56	117
Non-Farm Sector	94.41	165.74	176
Trade and Services	754.15	1100.24	146
<b>Total Priority Sector</b>	<b>1539.12</b>	<b>2073.54</b>	<b>135</b>
<b>2006-07 (up to 31-12-2006)</b>			
Farm Sector	811.50	683.67	84
Non-Farm Sector	109.50	188.74	172
Trade and Services	974.00	802.33	82
<b>Total Priority Sector</b>	<b>1895.00</b>	<b>1674.74</b>	<b>88</b>

### 11.4 District Credit Plan Allocation 2007-08 at a Glance

(Rs. in Crores)

Sector	2007-08
1. Agriculture	894.64
2. Allied Activities	52.38
3. Non-Farm Sector	143.00
4. Other Primary Sector	1235.00
<b>Total</b>	<b>2325.02</b>

### 11.5 Details of the Key Business Indicators of Commercial Bank

(Rs. in Lakhs)

	Sep. 2004	Sep. 2005	Sep. 2006
1. Total Deposits	571147.17	613259.25	728519.26
2. Total Advance	287712.01	383814.21	471513.03
3. CD ratio	50.00	63.00	64.72
4. PS Advance	143256.06	190600.57	264580.47
5. % of PS to Total Advance	49.79	49.63	56.11
6. Total Advance to Farm Sector	36557.96	51025.32	68193.76
7. % of FS to Tot. Adv.	12.71	13.29	14.46
8. % of FS to PS Adv.	49.79	49.63	56.11
9. Adv. to SSI	21486.76	24741.77	26926.11
10. % of SSI to Tot.	15.00	12.99	10.18
11. Adv. to NRE	251417.26	268082.07	245488.10
12. Adv to DRI	33.18	38.78	49.74
13. % of DRI to Tot. Adv.	0.01	0.01	0.01
14. Adv. to Weaker Section	15602.36	31243.56	61442.63
15. % of WS to Tot. Adv.	10.89	16.40	23.22

### 11.6 Statement of Demand Collection overdues of Priority Sector as on 30-6-2006

(Amount in Crores)

<i>Sector</i>	<i>Total Demand</i>	<i>Total Collection</i>
Agriculture and allied activities	3744547	2687836
Small Scale Industries	761945	511646
Setting up of Industrial Estates	761945	511646
Small Roads and Water Transports	360408	281478
Retail Trades	836368	729218
Small Business	264361	211067
Self Employed Persons	133174	101215
Education	41078	29165
Housing Finance	480664	365014
Consumption Loan	3063	1842
<b>Total for Priority Sector</b>	<b>6625608</b>	<b>4918480</b>

### 11.7 Sector—wise Target under District Credit Plan 2006-07

<i>Sector</i>	<i>Target 2007-08</i>
I. AGRICULTURE(TL+CL)	14510798
Minor irrigation	270148
Land Development	496636
Farm Merchanisation	137339
Plantation and Horticulture	2309814
Others	168133

<i>Sector</i>	<i>Target 2007-08</i>
<b>II. ALLIED ACTIVITIES</b>	<b>523806</b>
Dairy	271802
Poultry	60289
Sheep and Goat	56174
Fisheries	80859
Farm Forestry	36050
Cold Storage/Storage Tank	18632
<b>III. NON-FARM SECTOR</b>	<b>1429999</b>
Handloom	8400
Tiny Sector	158781
Village Artisans	151600
Rural Artisans	64113
SSI	815606
Non-Farm Misc.	231499
<b>IV. OTHER PRIORITY SECTOR</b>	<b>12349986</b>
Transport Operators	548922
Trade and Small Business	2095691
Prof. and Self Employed	264039
Educational	1500627
Housing	4314632
Consumption	2472931
Misc.	1153144
<b>Total Priority Sector</b>	<b>23250225</b>
<b>Total Non-Priority Sector</b>	<b>9749991</b>
<b>Total District Credit Plan</b>	<b>33000216</b>



## 12. ANNUAL PLAN

## 12.1 Block Plan Expenditure Statement for the month of March 2006

Sl. No.	Nam. of Block	Receipts during 2005-06 (Rs. In Lakhs)(Cumulative)					Expenditure up to the Month (Rs. In lakhs)(Cumulative)					Percentage of expenditure (10/6 x 100)	Total No. of Projects	No. of Projects completed	No. of Projects in Progress	
		General Normal & RIDF	SCP	TSP	Total (3+4+5)	General Normal & RIDF	SCP	TSP	Total (7+8+9)							
1	2	3	4	5	6	7	8	9	10	11	12	13	14			
1	Eratupetta	70.79	10.63	22.18	103.80	54.66	9.66	22.18	86.52	83.35	53	47	6			
2	Eitumanoor	63.32	24.68	1.24	89.24	43.99	9.82	0.59	54.40	60.96	64	51	10			
3	Kaduthuruthy	64.05	39.88	0.76	104.69	48.83	31.75	0	80.58	76.97	105	39	21			
4	Kanjirappally	101.17	51.42	16.27	168.86	93.12	49.58	10.12	152.82	90.50	155	82	73			
5	Lalam	46.52	13.78	0.64	60.94	44.34	8.18	0.52	53.04	87.04	60	59	1			
6	Madappally	54.56	46.89	1.54	102.99	32.66	30.93	0.41	64.00	62.14	74	26	48			
7	Pallom	68.52	31.35	2.9	102.77	51.35	29.00	1.83	82.18	79.96	97	67	30			
8	Pampady	42.47	13.59	1.09	57.15	32.83	9.78	1.09	43.70	76.47	60	40	20			
9	Uzhavoor	47.1	17.95	0.87	65.92	47.1	17.95	0.87	35.92	100.00	73	28	45			
10	Vazhoor	49.9	20.86	1.16	71.92	40.67	14.09	0.25	55.01	76.49	78	43	35			
11	Vaikom	40.25	31.52	0.74	72.51	28.5	16.48	0.74	45.72	63.05	59	34	21			
	<b>Total</b>	<b>648.85</b>	<b>302.55</b>	<b>49.39</b>	<b>1000.79</b>	<b>518.07</b>	<b>227.22</b>	<b>38.60</b>	<b>783.89</b>	<b>78.33</b>	<b>878</b>	<b>516</b>	<b>310</b>			

## 12.2 Statement of Development Expenditure Fund as on 31-3-2007

Sl. No	Name of Block	Receipts during 2006-07 (Rs. in Lakhs)(Cumulative)				Expenditure up to the Month (Rs. in lakhs)(Cumulative)				Total No. of Projects including in the Annual Plan	No. of projects completed	No. of projects in Progress	
		General Normal & RIDF	SCP	TSP	Total (3+4+5+6)	General Normal & RIDF	SCP	TSP	Total (7+8+9)				
1	2	3	4	5	6	7	8	9	10	11	12	13	14
1	Erattupetta	118.89	12.81	26.75	158.45	116.39	11.61	26.25	154.25	97.35	73	69	
2	Ettumanoor	78	29.73	1.50	109.23	73.28	29.67	1.50	104.45	95.62	64	53	
3	Kaduthuruthy	80.58	48.05	0.92	129.55	77.19	36.08	0.92	114.19	88.14	84	55	
4	Kanjirappally	140.9	61.96	19.62	222.48	118.9	49.36	16.06	184.32	82.85	76	55	
5	Lalam	111	16.61	0.77	128.45	111.01	16.60	0.77	128.38	99.95	95	89	
6	Madappally	78.18	56.50	1.86	136.54	77	44.33	1.84	123.18	90.22	93	79	
7	Pallom	100.13	37.78	3.50	141.41	95.47	38.29	3.42	137.18	97.01	81	69	
8	Pampady	5.74	16.37	1.31	74.42	49.18	16.37	1.31	66.86	89.84	75	66	
9	Uzhavoor	95.04	21.63	1.06	117.73	91.03	20.99	0.90	112.92	95.91	52	45	
10	Vazhoor	47.45	25.14	1.40	73.99	40.99	24.33	0.65	65.97	89.16	115	82	
11	Vaikom	52.89	37.98	0.89	71.76	46.67	32.91	0.87	80.45	87.58	62	52	
	<b>Total</b>	<b>959.87</b>	<b>364.56</b>	<b>59.58</b>	<b>1384.01</b>	<b>2095.12</b>	<b>320.54</b>	<b>54.49</b>	<b>1272.15</b>	<b>91.92</b>	<b>870</b>	<b>714</b>	

## 13. STATE INCOME

13.1 Net District & State Domestic Product at factor cost by Industry of Origin (At Constant Price) Base 1999-2000  
(Rs. in lakhs)

Sector	2001-02		2002-03		2003-04		2004-05(P)		2005-06(Q)	
	District	State	District	State	District	State	District	State	District	State
Primary Sector	101325	1456904	115975	1468237	114027	1441777	94682	1500388	129386	1502905
Secondary Sector	72945	1344838	81271	1484936	98874	1795041	107998	1945520	120903	2168065
Tertiary Sector	269792	3939403	295616	4296142	317487	4609187	348473	5049159	388894	5602207
Net Domestic Product	444061	6741145	492862	7249315	530388	7846005	551152	8495067	639182	9274177
Mid Year Population ('000)	1961	31968	1985	32357	2006	32711	2029	33072	2050	33425
Per Capita Income (in Rs.)	22645	21087	24829	22404	26440	23986	27164	25687	31180	27746

Source: State Domestic Product—New series 1999-2000 to 2005-2006

13.2 Net District & State Domestic Product at factor cost by Industry of Origin (At Current Price) Base 1999-2000  
(Rs. in lakhs)

Sector	2001-02		2002-03		2003-04		2004-05(P)		2005-06(Q)	
	District	State	District	State	District	State	District	State	District	State
Primary Sector	87521	1313164	108165	1386317	121427	1508816	142202	1651671	150339	1771664
Secondary Sector	77932	1436272	88849	1622607	111282	2020959	127026	2289894	145185	2605804
Tertiary Sector	283853	4146566	323696	4715291	363352	5292595	403314	5878623	453243	6603176
Net Domestic Product	449305	6896002	520710	7724215	596061	8822370	672542	9820188	748767	10980644
Mid Year Population ('000)	1961	31968	1985	32357	2006	32711	2029	33072	2050	33425
Per Capital Income (in Rs.)	22912	21572	26232	23872	29714	26971	33146	29693	36525	32852

13.3 Gross District & State Domestic Product at factor cost by Industry of Origin (At Constant Price) Base 1999-2000  
(Rs. in lakhs)

Sector	2001-02		2002-03		2003-04		2004-05(P)		2005-06(Q)	
	District	State	District	State	District	State	District	State	District	State
Primary Sector	105143	1519225	120315	1533192	118676	1510053	132020	1573755	133572	1576593
Secondary Sector	85784	1549906	91729	1666616	110567	1994244	120430	2153378	134100	2386823
Tertiary Sector	297943	4355782	326262	4749862	350164	5091139	383949	5571278	419915	6079964
Gross Domestic Product	488870	7424913	538305	7949670	579408	8595436	636399	9298411	987587	10043380
Mid Year Population ('000)	1961	31968	1985	32357	2006	32711	2029	33072	2050	33425
Per Capita Income (in Rs.)	24930	23226	27119	24569	28884	26277	31365	28116	33541	30048

13.4 Gross District & State Domestic Product at factor cost by Industry of Origin (At Current Price) Base 1999-2000  
(Rs. in lakhs)

Sector	2001-02		2002-03		2003-04		2004-05(P)		2005-06(Q)	
	District	State	District	State	District	State	District	State	District	State
Primary Sector	91565	1379981	113028	1457606	126701	1586204	148472	1745053	157038	1879429
Secondary Sector	92047	1662063	100597	1826673	124862	2252340	142314	2545615	161985	2884321
Tertiary Sector	314712	4603086	357999	5223027	401139	5849792	445489	6500195	500027	7292689
Gross Domestic Product	498323	7645130	571625	8507306	652702	9688336	736275	10790863	819050	12056439
Mid Year Population ('000)	1961	31968	1985	32357	2006	32711	2029	33072	2050	33425
Per Capita Income (in Rs.)	25412	23915	28797	26292	32537	29618	36288	32628	39954	36070

## 13.5 Income &amp; Expenditure 2004-05

<i>Income (Rs.)</i>	
Building Tax	56847886
Entertainment Tax	4978995
Duty on transfer of property	23449329
Professional tax	41280664
Income from market	3190611
Income from other sources	260368097
<b>Total</b>	<b>390115582</b>
<i>Expenditure (Rs.)</i>	
Establishment charge	104626767
Public work	89664162
Education	5117733
Water supply	21543744
Electricity	24339073
Others	94166997
<b>Total</b>	<b>339458476</b>

*Note:—The data except from Vazhoor and Kanjirappally Blocks and Kottayam and Pala Municipalities.*

## 14. PUBLIC DISTRIBUTION SYSTEM 2005-06

## 14.1 Public Distribution details

No. of Ration Cards (Urban)	42772
No. of Ration Cards (Rural)	392150
<b>Total</b>	<b>434922</b>
No. of BPL Cards	100657
No. of AAY Cards	36104
No. of APL Cards	298161
No. of Annapurna Cards	2800
<b>Total</b>	<b>434922</b>
No. of Adults	1739806
No. of Non Adults	318540
Total Units	3798152
No. of CS Corpn: AWDs	0
No. of Co-op. AWDs	0
Private AWDs	33
<b>Total</b>	<b>33</b>
No. of CS Corpn: KWDs	0
No. of Private KWDs	24
<b>Total</b>	<b>24</b>
No. of Co-op. ARDs	8
No. of private ARDs	987
<b>Total</b>	<b>995</b>
Theoretical requirement of Rice (in Mt.Ton)	11211.88625
Theoretical requirement of Wheat (in Mt. Ton )	3149.00475
Theoretical requirement of Sugar (in Mt.Ton)	260.65
Theoretical requirement of Kerosene (lr.)	1559472
No. of electrified cards	341865
No. of non electrified cards	93065
No. of Maveli Stores	87
Neethi Stores	60



## 14.2 Details of APL, BPL, AAY, ANP Cards

<i>Ration Cards</i>	<i>District</i>	<i>State</i>
APL	298161	4669818
BPL	100657	1528787
AAY	36104	1129520
ANP	2800	94595
<b>Total</b>	<b>437722</b>	<b>7422720</b>

## 14.3 Details of Kerosene Dealers

	<i>Co-operative Societies</i>	<i>Private</i>	<i>Total</i>
District	0	24	24
State	1	312	313

## 14.4 Details of Population, Unit, Ration Cards, Permits and Ration Shops

		<i>District</i>	<i>State</i>
Ration Population	Adults	1739806	2286385
	Non-Adults	318540	4486326
	Total	2058346	6772711
Ration Units		3798152	7572549
Ration Cards		434922	10197868
No. of Permits		1200	11823934
Wholesale Dealers		57	9267772
Retail Dealers		995	10708857

## 14.5 Details of Ration Dealers

		<i>District</i>	<i>State</i>
Wholesale Dealers	FCI	1	22
	KSCSC	0	9
	Co-Operative Societies	0	37
	Private	57	278
	<b>Total</b>	<b>58</b>	<b>324</b>
Retail Dealers	Co-Operative Societies	8	632
	Private	987	13542
	<b>Total</b>	<b>995</b>	<b>14174</b>

## 14.6 Requirement of Kerosene

	<i>District</i>	<i>State</i>
Electrified Cards	341865	4861730
RQMT	683730	9923.45
Non-Electrified Cards	93065	1870595
RQMT	465325	9352.99
Cooking	66599	944359
RQMT	399594	5666.15
Agriculture	122	1407
RQMT	2213	22.02
Fishing	0	13057.02
RQMT	0	5076.23
Others	489	6413
RQMT	8610	213.57
<b>Total RQMT</b>	<b>1559472</b>	<b>30254.41</b>

### 14.7 Allotment, Lifting and Off-take of APL, BPL, AASY Rice

			District	State
APL	Allotment		85138	1338720
	Lifting	FCI	2284.5	49004
		CMR	1218	4048
	Off-take	FCI	2021.58	34767.97
		CMR	1016.85	6810.35
% Off-take			2.25834	2.597105
BPL	Allotment		20911.9	341407
	Lifting	FCI	18911.9	325651
		CMR	2000	17920.3
	Off-take	FCI	19071.92	323083.2
		CMR	1913.97	18388.55
% Off-take			86.87047	94.63287
AAY	Allotment		10850	191364
	Lifting	FCI	8450	180252
		CMR	2400	13029
	Off-take	FCI	8447.55	99574.78
		CMR	2380	13008
% Off-take			71.4045	52.03423

## 15. RURAL DEVELOPMENT

## 15.1 Swarnajayanthi Grama Swazrogar Yojana 2006-07

No. of Self Help Groups Formed	3090
No. of Self Help Groups passed Grade I	1223
No. of Self Help Groups passed Grade II	492
No. of Self Help Groups assisted for economic activities	444
No. of individual Swarzogaries assisted economic activities	165
Amount of subsidy disbursed (in lakhs)	69.692
Amount of loan disbursed (in lakhs)	90.156

## 15.2 Indira Avaz Yojana

	<i>Construction of new houses during 2006-07</i>	<i>SC/ST</i>	<i>General</i>	<i>Total</i>
New	No. of houses completed	491/36	531	1058
	Expenditure during the year (in lakhs)	133.868/ 11.916	145.507	291.291
Updation	No. of houses completed	100/5	116	221
	Expenditure during the year (in lakhs)	17.183/ 0.683	17.19	35.056

### 15.3 Sampoorna Gramina Rozgar Yojana 2006-07

No. of works under taken	995
No. of works completed	736
Food grains distributed (In M.T.)	1736
Man days generated (lakhs)	2.094
Total Expenditure (lakhs)	566.245

### 15.4 Social Welfare institutions as on 2006

1.	No. of ICDS Project Offices	11
2.	World Bank assisted	Nil
3.	No. of Anganwadies sanctioned	1748
4.	No. of Anganwadies Functioned	1748
5.	Welfare Institution	4
6.	Beneficiaries	135
7.	Orphanages	142
8.	Beneficiaries	6656
9.	Old Age Home	1
10.	Beneficiaries	26
11.	Poor Home	1
12.	Beneficiaries	150
13.	No. of Kudumbasree Units	N.A.
14.	No. of Regd. Members	N.A.
15.	Thrift Collection Up to 3/2006 (In Rs.)	N.A.
16.	Loan Sanctioned (In Rs.)	N.A.

## 16. POLICE

## 16.1 Police Offices

1.	No. of SP offices	1
2.	No. of DYSP offices	7
3.	No. of Circle offices	14
4.	No. of Police Stations	31
5.	No. of Women Cell	1
6.	No. of Police Control Room	1

## 16.2 Details of Crimes as on 31-12-2006

1.	Murder	21
2.	Rape	30
3.	Kidnapping	22
4.	Robbery	46
5.	Burglary	394
6.	Theft	405
7.	Riots	292
8.	Dowry death	2

## 16.3 Details of Road Accidents 2006

1.	No. of Road accidents	3127
2.	No. of Persons killed	255
3.	No. of persons injured	3494

## 16.4 No. of Two wheeler Road Accidents 2006

1.	No. of Road Accidents	778
2.	No. of Persons killed	54
3.	No. of persons injured	770

**16.5 Offences against Women – 2006**

1.	Rape	30
2.	Kidnapping	22
3.	Dowry death	2
4.	Molestation	196
5.	Cruelty by Husband and relatives	186
6.	Eve teasing	29
7.	Other offence	NIL

**16.6 Suicide- 2006**

1.	Male	337
2.	Female	112

**16.7 Accidental death by Natural Causes – 2006**

1.	Male	247
2.	Female	52

**16.8 Accidental death by Unnatural Causes - 2006**

1.	Male	91
2.	Female	22

**16.9 Offences against SC/ST – 2006**

	SC	ST
1. Rape	8	1
2. Arson	NIL	NIL
3. Other IPC	11	NIL
4. SC/ ST PA Act only	8	1
<b>Total</b>	<b>27</b>	<b>2</b>

## 17. MISCELLANEOUS

## 17.1 Number of Beneficiaries as on 31-3-2006

1.	Kerala Building Construction Labour Welfare Fund	51920
2.	Kerala Anganavady Helpers	1879
3.	Kerala Anganavady Workers	1879
4.	Kerala Artisans & Skilled Workers Welfare Fund	13884
5.	Kerala Toddy Workers Welfare Fund Board	4226
6.	Kerala Agricultural Labour Welfare Board	99929
7.	Kerala Tailoring Workers Welfare Board	30049
8.	Kerala Khadi Workers Welfare Board	148
9.	Kerala Head load Workers Welfare Board	1339
10.	Kerala Motor Transport Workers Welfare Board	4278

## 17.2 Social and Cultural Institutions 2006

1.	Public Library	344
2.	Reading room	348
3.	Balavady	22
4.	Anganawadi	1697
5.	Adult Education Centre	142
6.	Community Hall	95
7.	Sports Club	415
8.	Arts Club	440
9.	Community Radio Sets	25
10.	Community TV Sets	188
11.	Cinema Theatres	49
12.	Seating capacity	28052



### 17.3 Scheduled Caste and Scheduled Tribe Colonies

	Nos.
1. Scheduled caste colonies	402
2. Houses	12827
3. Electrified	9439
4. No. of House connection	11272
5. Scheduled Tribe colonies	33
6. Houses	3901
7. Electrified	3119
8. No. of House Connection	2594

### 17.4 Families Below Poverty Line—2004

APL	112296
Others	175611
<b>Total</b>	<b>287907</b>

### 17.5 Number of seats reserved for women in LSGs—2005-2006

<b>Grama Panchayat</b>	
Total No. of Wards	1151
Seats reserved for women	407
Seats reserved for women Presidents	27
<b>Block Panchayat</b>	
Total No. of Wards	142
Seats reserved for women	49
Seats reserved for women Presidents	4
<b>District Panchayat</b>	
Total No. of Wards	23
Seats reserved for women	8
<b>Municipalities</b>	
Total No. of Wards	118
No. of seats reserved for women	41
Seats reserved for women Presidents	2

## 17.6 Water Resources

<i>Important Rivers</i>	<i>Length in Kms.</i>
Meenachil	78
Muvattupuzha	30
Manimala	15
<i>Back Water (Kayal)</i>	
Vembanad	6070

## 17.7 Irrigation work details—2006-07

<i>Type of Works</i>	<i>No. of Works</i>	
	<i>Works Completed</i>	<i>During the year</i>
Minor Irrigation Class I	Nil	Nil
Minor Irrigation Class II	1	2
Lift Irrigation	Nil	Nil
IPD	Nil	Nil
Community Irrigation	Nil	Nil
EEC	Nil	Nil
Jilla Panchayat Works	Nil	Nil
NABARD	2	5
<b>Total</b>	<b>3</b>	<b>7</b>
Plan outlay Received during the year (in Rs.)	4440760	Nil
Expenditure during the year (in Rs.)	4353092	Nil

## IMPORTANT OFFICES

Office	Phone No.
District Collector	2562001 (O) 2570057 (R)
District Panchayat President	2565966 (O) 2537877
DSP	2564700
ADM	2564800
ADC	2560645
Dist. Information Office	2562558
'Friends' - 'Janasevana Kendram'	2304341
Vigilance & Anti Corruption Bureau	2585144
DRDA	2578802
DMO (Health)	2562778
DEO	2566750
Fire Station, Kottayam	2567444
Election Deputy Collector	2560085
DD, Panchayats	2560282
DD, Education	2583095
Sales Tax Commissioner	2562314
Dist. Planning Officer	2561638
Dist. PSC Office	2578278
Dist. Supply Office	2560371
Dist. Stationery Office	2342175
Dist. Statistical Office	2562073
Dist. Treasury	2562281
Dist. Labour Office	2564365
Dist. Registrar	2563822
Dist. Town Planner	2564160
Kudumbasree Mission	2302049
Pollution Control Board	2563145
Lead Bank (SBT)	2564242
Press Club	2568877
Rubber Board	2571231
Income Tax Commissioner	2567841
BSNL Enquiry	2565334

Office	Phone No.
Dist. Lottery Office	2560756
Guest House, Kottayam	2562219
Medical College Hospital	2597311
Dist. Hospital, Kottayam	2563611
E.S.I., Vadavathoor	2576198
Govt. College, Nattakom	2563116
Govt. Poly, Nattakom	2561884

## ARTS &amp; SCIENCE COLLEGES

Sl. No.	Name of College	Phone No.
1	Alphonsa College, Pala	954822212447
2	Assumption College, Changanacherry	2420109
3	B.C.M. College, Kottayam	2562171
4	B..K. College, Amalagiri	2597384
5	Baselius College, Kottayam	2563918
6	C.M.S. College, Kottayam	2566002
7	Devamatha College, Kuravilangad	954822230233
8	H. B. College, Melukavu	954822219014
9	K. E. College, Mannanam	2597374
10	K. G. College, Pampady	2505212, 2508212
11	NSS Hindu College, Changanacherry	2420090
12	S. B. College, Changanacherry	2420025
13	S. D. College, Kanjirappally	954828234340
14	St. George's College, Aruvithura	954822272220
15	St. Mary's College, Manarcadu	2374483, 2373383
16	St. Stephen's College, Uzhavoor	954822240127
17	St. Thomas College, Pala	954822212317
18	S.V.R. N.S.S. College, Vazhoor	2456227
19	D. B. College, Thalayolaparambu	954829236136
20	Govt. College, Nattakom	2363116
21	St. Xavier's College, Kothavara, Vaikom	954829275303
22	S.N. College, Kumarakom	9249122660

**TEACHER TRAINING COLLEGES IN  
KOTTAYAM DISTRICT**

<i>Sl.No.</i>	<i>Name of College</i>	<i>Phone No.</i>
1	Mount Carmel Training College, Kottayam	2573120
2	NSS Training College, Changanacherry	2420481
3	St. Joseph's Training College, Mannanam	2597347
4	St. Thomas Training College, Pala	954822212317

**Sources of Data**

1. Census 2001
2. Agricultural Statistics 2004-05, 2005-06
3. District Animal Husbandry, Kottayam
4. District Industries Centre, Kottayam
5. Khadi & Village Industries, Kottayam
6. Coir Project Office, Vaikom
7. Employment Office, Kottayam
8. RTO, Kottayam
9. District Education Office, Kottayam
10. DMO Office, Kottayam
11. Lead Bank (SBT), Kottayam
12. District Planning Office, Kottayam
13. District Supply Office, Kottayam
14. Tourism Directorate, Thiruvananthapuram
15. SC Development Office, Kottayam
16. Rural Development Office, Kottayam
17. SP Office, Kottayam
18. ICDS, Kottayam
19. Minor Irrigation, Kottayam
20. Panchayat Level Statistics 2004-05, 2005-06
21. District Soil Survey Office, Kottayam
22. Dairy Development Office, Kottayam
23. Credit Plan of SBI 2007-08



545



PRINTED BY THE S.G.P., GOVERNMENT CENTRAL PRESS, TRIVANDRUM, 2008