



Government of Kerala

State Domestic Product

**1980-81
To
1995-96**

BASE YEAR – 1980-81

**Department of Economics and Statistics
Thiruvananthapuram
1999**

GOVERNMENT OF KERALA

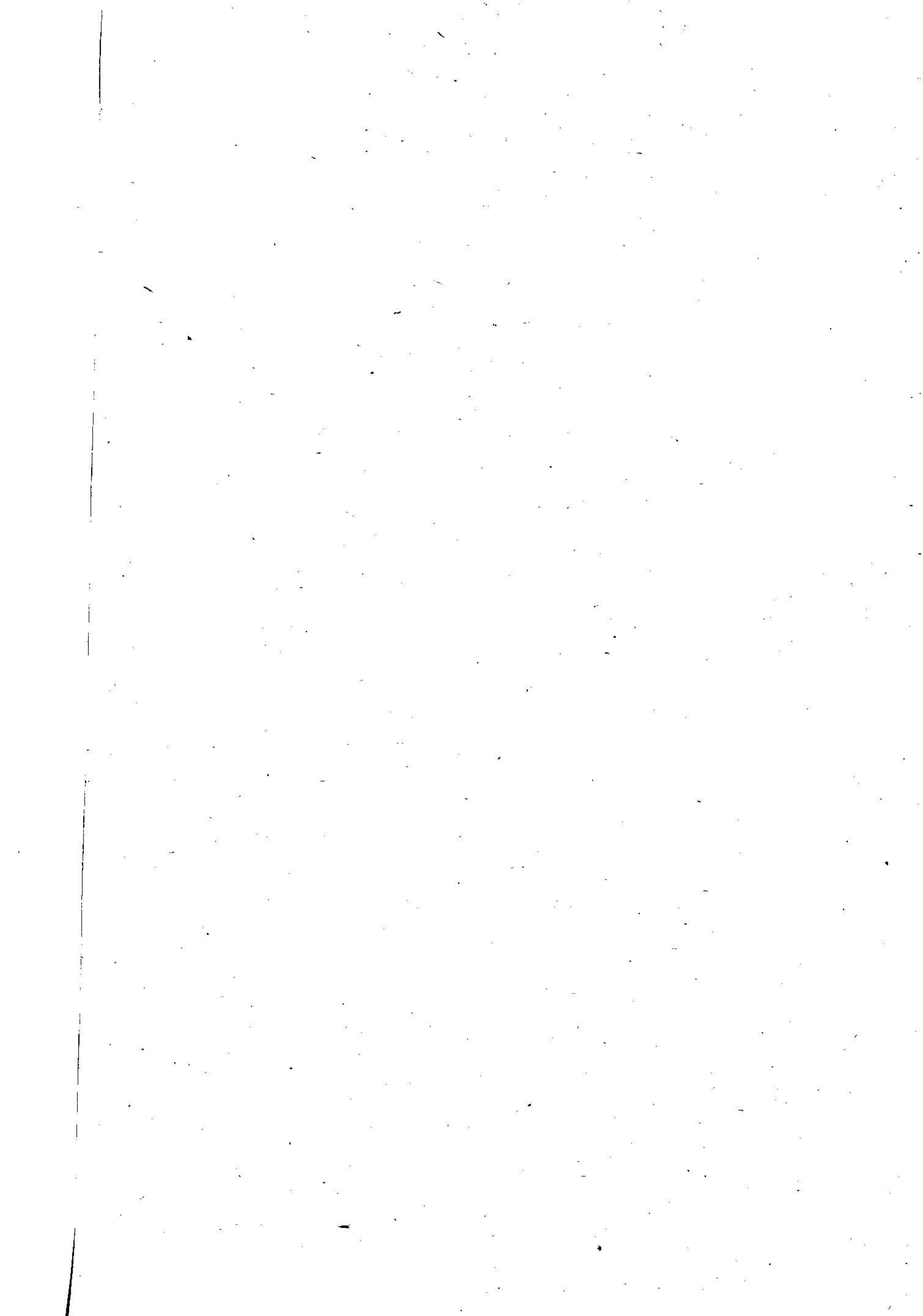
STATE DOMESTIC PRODUCT

1980-81 TO 1995-96

BASE YEAR - 1980-81

DEPARTMENT OF ECONOMICS AND STATISTICS
THIRUVANANTHAPURAM

- 1999 -



P R E F A C E

The State Domestic Product is estimated annually by the Department of Economics and Statistics based on the guidelines, methodology and definitions prescribed by the Central Statistical Organisation on conformity with the U.N. System of National Accounts. The State Domestic Product thus prepared by the Department is invariably reconciled with the figures prepared by the Central Statistical Organisation before publication.

This issue presents the estimates of Gross Domestic Product/State Domestic Product and percapita income for the years from 1980-81 to 1995-96, both at current and constant (1980-81) prices. The estimates prepared separately for all the 13 sectors are prescribed in the tables given in this issue.

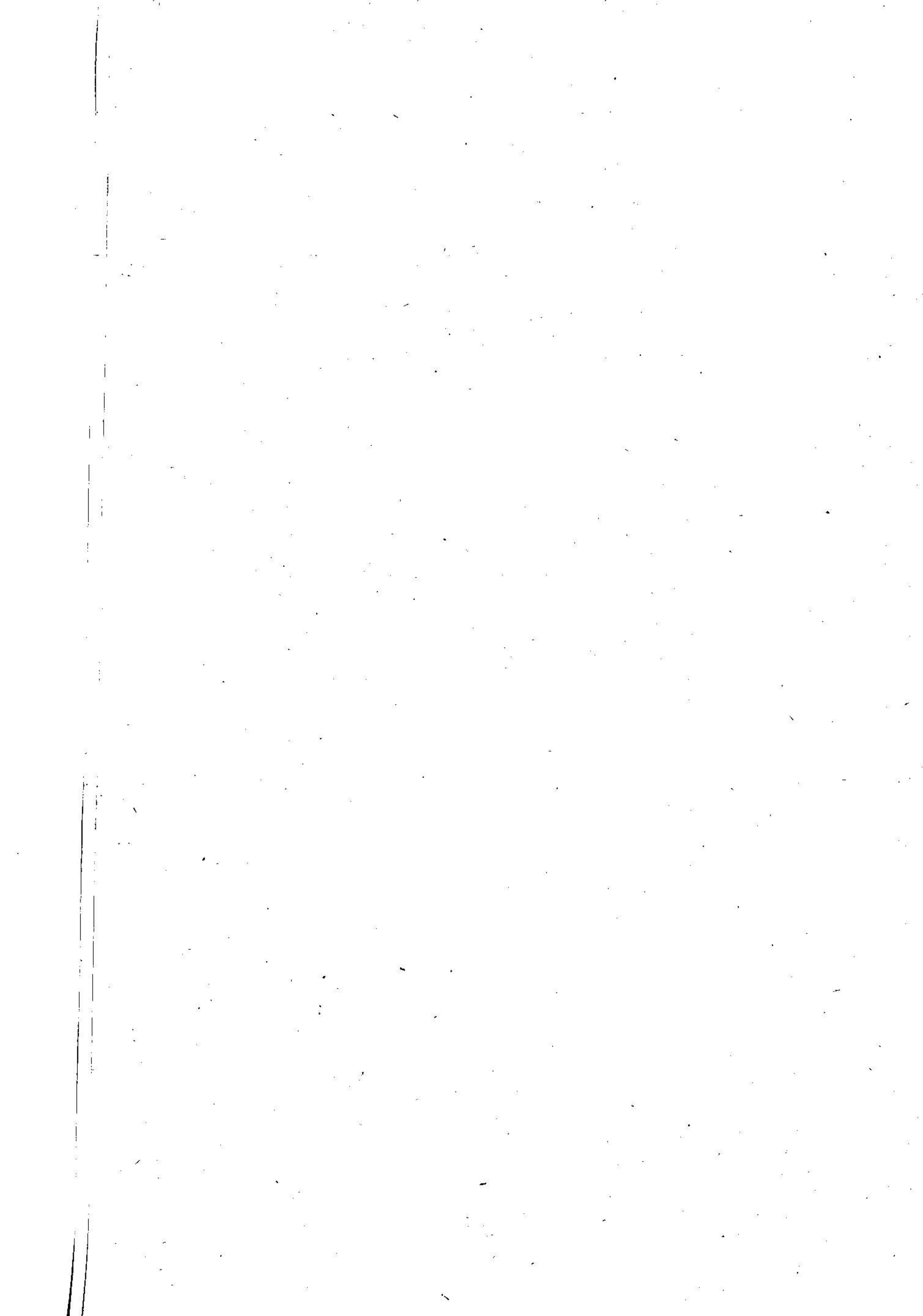
Domestic-wise breakup of N.S.D.P. and Percapita Income at current and constant (1980-81) prices for the period from 1990-91 to 1995-96 are also presented in this brochure.

An important tables showing the N.S.D.P. and Percapita Income at 1960-61 prices for all the years from 1960-61 to 1995-96, comparative table showing the State and District Percapita Income from 1980-81 to 1995-96 & N.S.D.P. and percapita of different states at constant price are also some of the salient features of this publication.

I would like to place on record my appreciation to the officers and staff in the State Income Division who have made earnest efforts in bringing out this publication.

Thiruvananthapuram,
25th September, 1999.

U. THOMAS SLEEBA
D I R E C T O R



C O N T E N T S

	Page
I. INTRODUCTION	1
II. NOTES ON METHODOLOGY	2
III. STATE INCOME OF KERALA - A BRIEF ANALYSIS	10
IV. SECTORAL CONTRIBUTION	27
 <u>TABLES</u>	
1. Net State Domestic Product at Constant and Current Prices	11
2. N.S.D.P. of Kerala and All India at Constant Prices	12
3. Per Capita Income of Kerala and All India at 1980-81 Prices	13
4. Growth in Net State Domestic Products and Per Capita Income of Kerala	14
5. Gross State Domestic Product at Factor Cost by Industry of Origin (at Current Prices) '80-81 to '97-98	15
6. Gross State Domestic Product at Factor Cost by Industry of Origin (at Constant Prices 1980-81 to 1997-98	18
7. Net State Domestic Product at Factor Cost by Industry of Origin (at Current Prices) 1980-81 to 1997-98	21
8. Net State Domestic Product at Factor Cost by Industry of Origin (at Constant Prices) 1980-81 to 1997-98	24
9. Structure of Net State Domestic Product at Constant Prices (Percentage) 1980-81 to 1995-96	28
10. Structure of Net State Domestic Product at Current Prices (Percentage) 1980-81 to 1995-96	30
11. State Income by Broad Sectors at Constant Prices 1980 81 to 1995-96	32
12. State Income by Broad Sectors at Current Prices 1980-81 to 1995-96	33
13. State Income by Broad Sectors at Constant Prices (Percentage change over previous year) 80-81 to 95-96	34
14. State Income by Broad Sectors at Current Prices (Per Capita change over previous year) 80-81 to 95-96	35
15. Net State Domestic Product and Per Capita Income at 1960-61 Prices	36
16. Per Capita Income of Kerala at Current and Constant prices	37
17. District-wise distribution of NSDP and Per Capita Income of Kerala at Factor Cost by Industry of Origin for the year 1990 91 (At current prices)	38

(contd..)

Tables		Page
18.	District-wise distribution of NSDP and Per Capita Income of Kerala at Factor Cost by Industry of Origin for the year 1990-91 (At constant prices)	40
19.	District-wise distribution of NSDP and Per Capita Income of Kerala at Factor Cost by Industry of Origin for the year 1991-92 (At current prices)	42
20.	District-wise distribution of NSDP and Per Capita Income of Kerala at Factor Cost by Industry of Origin for the year 1991-94 (At constant prices)	44
21.	District-wise distribution of NSDP and Per Capita Income of Kerala at Factor Cost by Industry of Origin for the year 1992-93 (At current prices)	46
22.	District-wise distribution of NSDP and per Capita Income of Kerala at Factor Cost by Industry of Origin for the year 1992-93 (At constant prices)	48
23.	District-wise distribution of NSDP and Per Capita Income at Factor Cost by Industry of Origin for the year 1993-94 (At current prices)	50
24.	District-wise distribution of NSDP and Per Capita Income at Factor cost by Industry of Origin for the year 1993-94 (At current prices)	52
25.	District-wise distribution of NSDP and Per Capita Income at Factor cost by Industry of Origin for the year 1994-95 (At current prices)	54
26.	District-wise distribution of NSDP and Per Capita Income at Factor cost by Industry of Origin for the year 1994-95 (At constant prices)	56
27.	District-wise distribution of NSDP and Per Capita Income at Factor cost by Industry of Origin for the year 1995-96 (At current prices)	58
28.	District-wise distribution of NSDP and Per Capita Income at Factor cost by Industry of Origin for the year 1995-96 (At constant prices)	60
29.	Comparison between State and District Per Capita Income of Kerala - 80-81 to 95-96 (At current prices)	62
30.	Comparison between State and District Per Capita Income of Kerala 80-81 to 95-96 (At constant prices)	63
31.	Net State Domestic Product at Factor Cost of various States and U.T. (At constant prices)	64
32.	Per Capita Net State Domestic Product of various States and U.T. (At constant prices)	65

STATE INCOME AND RELATED AGGREGATES OF KERALA FOR
1980-81 TO 1995-96

INTRODUCTION

State Income is the most important yardstick by which economic development of a country is measured. Net Domestic Product is defined as the factor income generated within the geographical boundary of a State or it is the sum total of the net value added in the economy in a given period of time. National product is the sum total of the value added in different sectors of the economy in a specified period including the net factor income added from abroad.

Net Domestic Product or Net National Product at factor cost is the sum total of the earnings of the factors of production in the process of production in different sectors of the economy. It includes rent for land, interest on capital, wages and compensation paid to employees, profit and dividends for the organisation. In addition to this, in the case of self employed individuals, since no factor incomes are generated, mixed income of the self employed persons are also included as a constituent of the NDP. In short, the Net Domestic Product is the component of Wages and Salaries, Rent, Interest, Profit and Dividends and Mixed Income of the self employed.

On the whole 40% of the National Income is generated from this sector alone. Net Domestic Product at Factor Cost means the income derived by the factors of production excluding indirect taxes while net product at market prices is inclusive of indirect taxes.

State Income is computed in four different categories in each year in order to find out the difference between real growth and inflationary growth.

1. Net Domestic Product at constant prices (1980-81 base).
2. Gross Domestic product at constant prices (1980-81 base).
3. Net Domestic Product at current prices.
4. Gross Domestic Product at current prices.

The Base Year being 1980-81, the Net Domestic Product at 1980-81 (Constant) prices will reveal the actual growth trend in production. Gross Domestic Product at constant prices less consumption of fixed capital gives the Net Domestic Product at constant prices. Similarly Gross Domestic Product at current prices less consumption of fixed capital gives Net Domestic Product at current prices.

In General, National Income is the value of total of the goods and services produced in the economy in a given period. The different economic activities from which the income flows are classified as Primary, Secondary and Tertiary sectors. The Primary sector consists of Agriculture and allied activities while secondary sector comprises of Manufacturing, Electricity, Construction, Gas and Water Supply. Tertiary sector includes Transport, Communication, Trade, Finance, Real Estate Community and Personal Services.

The State Income finalised by this Division after reconciliation with Central Statistical Organisation figures for the period from 1980-81 to 1995-96 is mainly explained in this report. Net State Domestic Product at factor cost, worked out for different sectors, its distribution to districts and per capita income of the State are also dealt in this report. An attempt is also made in this report to provide National Income of the country and All India per capita for the purpose of comparison. The Net Domestic Product computed for other states for latest available years are also given in this report for the benefit of the data users.

NOTES ON METHODOLOGY

1. Agriculture and allied activities

The Net Domestic Product from Agriculture (proper), livestock and allied activities except government irrigation system is estimated by using the production approach which involves estimation of gross value of products and by-products and deduction of the value of inputs and consumption of fixed capital. Separate estimates of gross value of output of agriculture crops and livestock products are prepared, while Gross Domestic Product and Net Domestic Product are worked out for the activity as a whole.

(a) Agriculture (proper): Estimates of area and production of all the major and minor crops are based on crop estimation surveys under EARAS. These figures are used for the estimation of gross value of output. For miscellaneous and unspecified crops, (outturn) estimates are not available but area figures are available. For plantation crops, the production estimates published by the respective commodity boards are used. In the present series, instead of rice, paddy has been evaluated. The outturn of by-products are estimated by applying the yield rates based on cost of cultivation surveys. The average wholesale prices prevailing in the primary market during the peak marketing periods are used for evaluating crop outputs and also for by-products.

(b) Livestock and Livestock Products : For estimating the gross value of output from Livestock products, they are divided into (i) milk, (ii) meat and meat products, (iii) hides and skins, (iv) eggs and poultry meat, (v) dung, (vi) increment in stock, (vii) other products. The production estimates of milk, meat and egg are based on the Report on Integrated Sample survey for estimation of milk, egg and meat. The value of output is worked out by evaluating the livestock products at the corresponding annual average wholesale prices duly deflated for trade and transport margins and rural/urban price differentials. The value of output of meat has been adjusted to slaughtering and preservation of meat in the manufacturing sector.

(c) Inputs : To arrive at the Gross Domestic Product from agriculture and livestock, necessary deductions are made for the cost of inputs. The inputs are (i) seed, (ii) manure (chemical and organic), (iii) current repairs and maintenance charges, (iv) livestock feed, (v) irrigation charges, (vi) electricity charges, (vii) cost of pesticides and insecticides, (viii) market charges, and (ix) cost of diesel oil. Cost of seed was estimated using the seed rates supplied by Central Statistical Organisation. For tapioca the seed rate is estimated by using the cost of cultivation survey results of this department.

The cost of chemical fertilizer used were taken from the fertilizer statistics. The cost of repairs and maintenance irrigation charges, pesticides and insecticides and diesel oil have been supplied by Central Statistical Organisation.

Organic manure is the gross value of doing in the livestock sub sector.

The livestock feed has been estimated using the Integrated Sample Survey results.

The electricity charges have been worked out from the annual accounts of Electricity Board.

Market charges are estimated at the rates supplied by Central Statistical Organisation.

(d) Gross Domestic Product/Net Domestic Product : The Gross Domestic Product is obtained by deducting the total cost of inputs from the gross value Gross Domestic Product from operation of government irrigation system is also added to obtain the total Gross Domestic Product for the sector. The consumption of fixed capital is deducted from Gross Domestic Product to obtain the Net Domestic Product from agriculture sector.

Estimates at Constant (1980-81) Prices

For estimation of Gross Domestic Product/Net Domestic Product at constant prices, the output of agriculture crops, by products, livestock products and inputs are evaluated at 1980-81 prices. From the gross value the cost of inputs is deducted to arrive at the Gross Domestic Product. To this the Gross Domestic Product from operation of Government irrigation system is added up to obtain the total Gross Domestic Product. From this the consumption of fixed capital is deducted to obtain the Net Domestic Product at constant prices.

2. Forestry and Logging

Forestry sector includes (i) forestry and (ii) logging. The forest products are classified into two groups viz. (i) major products comprising industrial wood and fuel wood (ii) minor products comprising a number of heterogeneous items such as bamboo, eucalyptus, sandal wood, ivory etc.

The value of major forest products is evaluated at producers price. The producers price is obtained by adjusting the wholesale prices for trade and transport margins. An allowance of 10% of the value of the recorded production is made to cover all such unrecorded production. The royalty value of minor products is adjusted to arrive at the economic value.

From the gross value, cost of repairs and maintenance and other operational cost is deducted to get the Gross Domestic Product. From the Gross Domestic Product depreciation is deducted to obtain the Net Domestic Product from forestry and logging.

Estimates at constant prices : The outturn is evaluated at 1980-81 prices to obtain the gross value of major products at constant prices. The ratio of the recorded value of major products at the current year to the corresponding value at the base year is applied to estimate the value of minor products at constant prices.

From the gross value, cost of repairs and maintenance and consumption of fixed capital are deducted to arrive at the Net Domestic Product at constant prices.

3. Fishing

The activities included in this sector are (i) marine fish landings (ii) inland fish landings (iii) subsistence fishing (iv) gathering of lime shell, sea shell, sea weeds and other products and (v) fish curing viz. salting and sundrying of fish.

The production approach is followed to estimate the Gross Domestic Product/Net Domestic Product.

The estimates of gross value of marine fish landings, inland fish landings and subsistence fishing by non-professional fishermen are prepared separately from the data supplied by the Fisheries Department.

From the gross value, cost of repairs and maintenance and other operational costs are deducted to obtain, the gross value added. From the gross value added consumption of fixed capital is deducted to arrive at the net value added. Net value added from fish curing and other marine products are also worked out separately and added to obtain the total net value added from fishing sector.

Estimates at constant prices : The output is evaluated at 1980-81 prices to get the gross value at constant prices. From the gross value, the cost of repairs and maintenance is deducted to arrive at the Gross Domestic Product from the gross value added, the consumption of fixed capital is deducted to obtain the net value added. The value added by fish curing in the base year is projected to later years in proportion to the changes in the quantity of fish cured in the current year relative to the base year. Net value added from fish curing and other marine products at constant prices is also added to obtain the total Net Domestic Product from fishing sector at constant prices.

4. Mining and Quarrying

The estimate of income originating in this sector is prepared by production approach. Data on production and prices of minerals furnished in the "Financial Year Aggregates of Mineral Production" published by the Indian Bureau of Mines is used for estimation. Data on minor minerals is taken from the State Geology Department. The gross value added is further adjusted for input value and bank charges. The percentage of consumption of Fixed Capital to Gross Domestic Product, supplied by the Central Statistical Organisation is applied to obtain the State Domestic Product. The figures supplied by the Central Statistical Organisation are used as regards Atomic Energy.

The constant (at 1980-81) price estimates are computed on the basis of actual value of major minerals at 1980-81 prices and this ratio has been applied in the case of minor minerals.

5. Manufacturing

(i) Registered sector : Industry-wise value added has been obtained from the Annual Survey of Industries Division of this Directorate. These value added have been further adjusted for imputed bank charges (All India percentage as per National Accounts Statistics). Central Statistical Organisation's figure of Consumption of Fixed Capital was added to the State Domestic Product to arrive at the Gross Domestic Product.

The constant (at 1980-81 prices) price figures are obtained by applying wholesale price index of manufactured articles in the registered sector

(ii) Unregistered sector : The net value added in this sector has been estimated based on the National Sample Survey 40th round survey results combined with the results of sample survey on Directory Manufacturing Establishments 1984-85 of Kerala. The net value added from the above survey results for 19 industry groups for the year 1984-95 has been moved to later years using the following indices.

- (1) Food products (20-21):- Value of output of paddy, sugarcane, oil seeds and pulses.
- (2) Beverages, Tobacco and Tobacco products (22):- Value of output of mangoes and tobacco.
- (3) Textiles (23 to 26):- Value of production of cotton and coir.
- (4) Wood and Wood products, Furniture and Fixture (27):- Value of output of industrial wood.
- (5) Leather and fur products (29):- Value of output of cattle and buffalo hides and goat and sheep skin.

For the remaining groups including group 28, growth observed in the value added in the Annual Survey of Industries has been used. Central Statistical Organisation's figure of consumption Fixed Capital was added to the State Domestic Product to arrive at the Gross Domestic Product.

The Constant (at 1980-81 prices) price estimates are obtained based on the wholesale price index of manufactured articles in the unregistered sector.

6. Construction

The estimates of value added from construction are derived from the corresponding estimates of value of construction as shown below.

As regards Administrative Department, Local Bodies and Non-Departmental Commercial Undertakings, accounts or budgets are analysed.

As regards Post and Telegraph, Railways, Central Public Works Department etc., figures are collected from these institutions.

- As regards urban residential buildings, rural residential buildings, urban and rural non-residential buildings, other construction works including repair and maintenance etc., the detailed survey results of AIDIS 1981-82 published by the Reserve bank of India is depended. As regards residual category (private corporate sector) base year estimate is prepared from 'Lal's paper in Reserve Bank of India publication 1965-66. This is moved to later years with the help of construction expenditure (at current prices) in rural and urban residential sectors to obtain the estimates at current prices.

To the Net value added, the Consumption of Fixed Capital figure supplied by the Central Statistical Organisation is added to arrive at the Gross Value Added.

The constant (at 1980-81 prices) price estimates are obtained by moving the base year estimates using the index based on wages of skilled workers (rural and urban).

7. Electricity, Gas and Water Supply

Electricity:- The estimates under this sector are prepared based on the data obtained from the profit and loss account and the balance sheet of the Kerala State Electricity Board. Gross Domestic Product has been estimated as an aggregate factor payment such as compensation paid to employees including salaries and wages, money value benefits, director's fee, interest, rent and surplus and depreciation. Defferred revenue expenditure and intangible assets appearing in the balance sheet has been adjusted in the Gross Domestic Product estimates. In respect of private licensees the details are collected from Annual Survey of Industries schedules.

The constant (at 1980-81 prices) price estimate has been arrived at on the basis of wholesale price indices of manufactured articles.

Gas:- The estimates of Gobargas has been prepared based on the data obtained from the Kerala Khadi and Village Industries Commission. The production and value of LPG have been supplied by the Central Statistical Organisation. As separate Consumption Fixed Capital for gas sector is not available, Gross Domestic Product is treated as State Domestic Product for this sector.

The constant (at 1980-81 prices) price estimate is arrived by using the ratio of value of LPG at 1980-81 prices to current prices.

Water Supply:- The estimates of State Domestic Product has been arrived at by adopting the income approach. Separate estimates have been prepared for private and public sector. In the case of public sector total salaries paid to the employees engaged in water supply sector, as supplied by all the Municipalities and Corporations have been taken as value added.

From the total working force of water supply sector in urban area of the 1981 population census, the public sector working force collected from Municipalities/Corporations has been substracted to get the private working force in urban area. Number of workers in rural areas available from population Census (1981) has been treated as private rural working force and this has been moved to subsequent years by taking the annual growth rate of 1971-81 census results. Per worker compensation of employees in urban area is taken as average of all the categories in urban areas and of the lowest category for rural areas.

- To arrive at the total net value added of water supply, value added in public sector, total wages in private sector and operating surplus as available from the Annual Survey of Industries for this activity are added. To the Net Value Added thus obtained, Consumption of Fixed Capital is added to get the Gross Value Added.

The estimates at constant (at 1980-81 prices) prices are obtained by applying the index based on average compensation per worker as obtained from the Municipalities/Corporations.

8. Transport, Storage and Communication

(1) Railways:-

The estimates are supplied by Central statistical Organisation.

(2) Transport by other means and storage:-

(a) Mechanised Road Transport:

Public Sector:- Net value added from mechanised road transport in the public sector is worked out annually using the results of analysis of profit and loss statement of Kerala State Road Transport Corporation.

The constant price estimates are obtained by moving the value added for 1980-81 with the index of number of workers (KSRTC).

Private Sector:- Gross Value Added/Net Value Added for this sector is worked out by multiplying working force with Gross Value Added/Net Value Added per worker for the respective years category-wise. The category-wise working force (701, 702, 703 of NIC 70) is worked out by projecting the working force (as on 1-10-1980 based on 1981 census) with the category-wise indicator of number of vehicles registered. State-wise public sector working force is subtracted to get the data for private working force. The private sector working force is divided into rural and urban using the same proportion as observed in 1981 census working force. Value added per worker for the respective category for 1980-81 is worked out on the basis of results of enterprise survey 1983-84 for rural and urban areas separately. Gross Value Added per working and Net Value Added per worker available from this survey have been brought back and moved forward with the help of index number of consumer price for urban non-manual employees for urban areas and index of rural skilled workers for rural areas.

The value added at constant price is obtained by moving the 1980-81 value added with the index number of workers (1981 census) projected with the help of number of vehicles.

(b) Non-Mechanised Transport:

It covers non-mechanised road transport (NIC 704, 705, 706) supporting services to land transport (NIC 708) unrecognised water transport and services incidental to transport (NIC 730). The gross value added and net value added for transport by other means for the base year 1980-81 is prepared using 1981 census working force and Gross Value Added and Net Value Added per worker. Gross value added and Net value added per worker as obtained from 1983-84 enterprise survey were brought back to 1980-81 using the consumer price index of urban non-manual employees and index of rural

skilled workers for urban and rural areas respectively. The estimates of gross value and net value added for subsequent years are worked out by carrying forward the base year estimates with the help of relevant index of gross value of output of commodity producing sectors at current prices.

The value added at constant price is obtained by moving the value added for 1980-81 with the index of gross value of commodity producing sector at constant price.

(c) Storage and Warehousing:

For storage and warehousing public sector estimate is worked out by analysing the annual accounts of Kerala State Warehousing Corporation. For Private Sector, the value added obtained from National Sample Survey 29th round is used. The base year estimate is brought forward using the index of gross value of commodity producing sector valued at current prices.

For the estimates at constant price, the data on storage capacity is made use of.

(d) Water Transport:

Estimates of income from Kerala Water Transport Corporation, Water Transport Alleppey etc. are obtained by analysing the annual accounts of the respective water transport undertakings. Similarly income from Cochin Port Trust and other ports are worked out annually by analysing the relevant accounts and budget.

Value added at constant price is obtained by using the index of employment.

(3) Communication:-

The estimates at current and constant prices are supplied by Central Statistical Organisation.

9. Trade, Hotels and Restaurants

The estimates of gross value added have been prepared separately for public and private sector. For public sector the value added is obtained by analysing the annual accounts of State Trading Enterprises.

The estimate in the private sector 1978-79 is prepared by interpolating the results of Directory Establishment Survey 1979-80 (trade hotels and restaurants) and National Sample Survey 34th round. The estimate for base year 1980-81 and then to other years is obtained by moving the value added with the index of gross trading income valued at current prices.

The estimate at constant price is worked out using the index of gross trading Income at constant prices.

10. Banking and Insurance

The estimates at current and constant prices are supplied by Central Statistical Organisation.

11. Real estate and ownership of dwelling

(a) Ownership of dwelling:

The gross rental is estimated separately for rural and urban areas. The National Sample Survey Organisation in 38th round collected data on per capita monthly rent in urban areas in respect of Katcha, Semi-pucca and Pucca Houses. State-wise average per capita monthly rent has been presented separately for rental and owner occupied houses together with percentage of households living in rental houses. Using proportion of the two categories as weighed average per capita monthly rent has been calculated in respect of all categories of houses to represent rent in urban area in 1983

Gross rental has been calculated by multiplying rent per capita by population. Gross rental per dwelling has been obtained by dividing the gross rental by estimated number of dwelling. The urban rural proportion of the rental per dwelling collected from Municipalities, Corporations for urban and Panchayats for rural, is applied to get the rental per dwelling of rural residential houses.

The number of dwelling are collected from Municipalities and Corporations for every year for urban areas and for rural, estimated from the sample data collected. The increase in house rent compiled for urban rural manual employees (Central Statistical Organisations' time scale) is applied to get the rental/dwelling of urban area for the subsequent years.

Value added at constant price is obtained by using the current constant ratio of All India Estimates (CSO).

(b) Real Estimate:

The net value added in respect of Real Estate is worked out annually by analysing the balance sheet of the joint stock companies.

(c) Business Service:

The base year estimate is prepared as a product of G.V.A. per worker and working force. It is prepared separately for rural and urban areas. The estimates for subsequent years are obtained by moving the base year estimates using CPIUNME for urban areas and index of wage rate of skilled workers for rural areas.

12. Public Administration

The estimates are prepared separately for State Government, Central Government and Local bodies consisting of Municipalities, Corporations and Panchayats. For State Government the estimates are prepared in terms of compensation to employees obtained from the budget documents of the State. For the Central part the estimates are supplied by Central Statistical Organisation. Regarding the local bodies the data on expenditure on wages and salaries have been collected from all the Municipalities, Corporations and Panchayats.

Value added at constant price is worked out using the All India current constant ratio computed by Central Statistical Organisation.

13. Other Services

(1) Education, Research and Scientific Services:

Value added in respect of recognised educational institution is estimated by taking the expenditure on salaries and wages of teaching and non-teaching staff. For un-recognised educational institution 9.48% (1983-84 enterprise survey result) of recognised educational institution is taken.

Value added at constant price in educational sector is obtained by using the index of teacher student ratio.

(2) Medical and Health Services:

(a) Public Sector:- The expenditure on medical and health service on Public Sector have been obtained from the budget of the State.

(b) Private Sector:- The value added per worker for 1980-81 to 1983-84 is arrived at by interpolating the results of National Sample Survey 34th round OAE survey results and 1983-84 enterprises survey results. Per worker value added for rural and urban is obtained by using the wage rate of skilled workers and consumer price index of urban non-manual employees. The working force is worked out using 1971 and 1981 census results and the growth rate observed.

The data on working force for non-government sector is obtained therein as a residual subtracting public sector employment from total working force.

(3) Sanitary Service:

For sanitary service the estimates for public sector is worked out from the Municipal data collected each year.

(4) Other Services:

For rest of the other services namely legal services, religious and other community service, personal service and services not elsewhere classified the value added per worker is obtained similarly for medical and health service (private). Value added at constant prices for medical and health service, sanitary service and other service is obtained by using the index on number of workers.

STATE INCOME OF KERALA - A BRIEF ANALYSIS

The revised estimates of State Income for the financial year upto 1992-93 has been published in the previous document with 1980-81 as the base year. In this report estimates of State Domestic Product from 1980-81 to 1995-96 were computed and published with the same 1980-81 base year incorporating the growth of State Income starting from 1980-81 onwards. N.S.D.P. at Current and Constant Prices and All India N.S.D.P. Per Capita Income of Kerala and All India and N.S.D.P. of different State etc. are given in different tables. Besides sector-wise N.S.D.P. from 1980-81 to 1995-96 are also published in this Booklet.

TABLE - I

NET STATE DOMESTIC PRODUCT AT CONSTANT AND CURRENT PRICES

Year	Net State Domestic Product at Constant Price and Percentage increase (in lakhs)		Net State Domestic Product at Current Price and Percentage increase	
1	2	3	4	5
1980-81	382273		382273	
1981-82	377481	(-)1.25	404973	5.94
1982-83	386851	2.48	471150	16.34
1983-84	371168	(-)4.05	552328	17.23
1984-85	394158	6.19	614145	11.19
1985-86	408636	3.67	650341	5.89
1986-87	399297	(-)2.29	735437	13.08
1987-88	416563	4.33	825756	12.28
1988-89	458410	10.05	918172	11.19
1989-90	489236	6.72	1066768	16.18
1990-91	526234	7.56	1217349	14.12
1991-92	536466	1.94	1510165	24.05
1992-93	575161	7.21	1717520	13.73
1993-94	634665	10.35	1968826	14.63
1994-95	658375	3.74	2317583	17.71
1995-96	681948	3.58	2790942	20.42

Table indicates the growth of State income over the years 1980-81 to 1995-96 at Constant price and current prices. From the table given above it is clear that at current prices the income grows faster than at constant prices. The real income over 16 years period has witnessed a growth of 78.39% while the income at Current price recorded an increase of 630.09%. The real growth is actually lagging far behind the inflationary growth. The widening gap between the two indicates the exorbitant rate of increase in price level. A desirable distance between the real growth and growth at current prices should be maintained to have a stable Economy. It also indicates that the percentage increase of income in real term and at current prices are showing a fluctuating trend over the period.

TABLE - II

N S D P OF KERALA AND ALL INDIA AT CONSTANT PRICE (1980-81)

Year	NSDP Kerala in at 1980-81 Price(crores)	Percentage of All India	NSDP All India at 1980-81 Price(crores)	Percentage increase
1	2	3	4	5
1980-81	3823	3.46	110340	..
1981-82	3775	3.22	117101	6.13
1982-83	3869	3.22	120320	2.75
1983-84	3712	2.85	130396	8.37
1984-85	3942	2.92	135021	3.55
1985-86	4086	2.91	140260	3.88
1986-87	3993	2.75	145418	3.68
1987-88	4166	2.75	151746	4.35
1988-89	4584	2.72	168382	10.96
1989-90	4892	2.77	176340	4.73
1990-91	5262	2.77	190218	7.87
1991-92	5365	2.82	190553	0.18
1992-93	5762	2.87	200381	5.16
1993-94	6347	2.99	212604	6.10
1994-95	6584	2.88	228964	7.70
1995-96	6819	2.78	245104	7.05

A comparison of N.S.D.P. of the State with All India estimates at 1980-81 price level is represented in Table No.II. This shows that the N.S.D.P. of the State at constant prices is always lying below the All India average over the last 15 years. There was wide fluctuations in the rate of growth at All India level. Whereas the rate of fluctuations in the case of State is very low and it almost maintain a trend around 3% in these years.

TABLE - III

PER CAPITA INCOME OF KERALA AND ALL INDIA AT 1980-81 PRICES

Year	Per Capita Income of Kerala at 1980-81 Price		Per Capita Income at 1980-81 Price (All India)	
	Kerala Per Capita Income (Rs)	Percentage Increase	Per Capita Income All India (Rs)*	Percentage increase
1	2	3	4	5
1980-81	1508	..	1625	..
1981-82	1469	-2.59	1692	4.12
1982-83	1485	1.09	1699	0.41
1983-84	1406	-5.32	1804	6.18
1984-85	1473	4.76	1827	1.27
1985-86	1507	2.31	1857	1.64
1986-87	1453	-3.58	1893	1.94
1987-88	1482	2.00	1929	1.90
1988-89	1614	8.91	2099	8.81
1989-90	1705	5.64	2198	4.72
1990-91	1815	6.45	2267	3.14
1991-92	1826	0.61	2226	(-)1.81
1992-93	1932	5.81	2298	3.23
1993-94	2103	8.85	2394	4.18
1994-95	2153	2.38	2533	5.81
1995-96	2200	2.18	2664	5.17

* CMIE Report, November 1998.

Per capita income at 1980-81 prices for Kerala and All India is represented in Table-II. The per capita real income always remains far below the All India average. This shows that the increase of income is always offsetted by the increase in population.

TABLE - IV

GROWTH IN NET STATE DOMESTIC PRODUCTS AND PER CAPITA INCOME OF KERALA

Year	At Current Prices				At Constant Prices			
	Net		Per		Net		Per	
	Domestic Product Rs.lakhs	Index	Capita Income Rs.	Index	Domestic Product Rs.lakhs	Index	Capita Income Rs.	Index
1	2	3	4	5	6	7	8	9
1980-81	382273	100	1508	100	382273	100	1508	100
1981-82	404973	106	1576	105	377481	99	1469	97
1982-83	471150	123	1809	120	386851	101	1485	98
1983-84	552328	144	2092	139	371168	97	1406	93
1984-85	614145	161	2296	152	394158	103	1473	98
1985-86	650341	170	2398	159	408636	107	1507	100
1986-87	735437	192	2676	177	399297	104	1453	96
1987-88	825756	216	2937	195	416563	109	1482	98
1988-89	918172	240	3233	214	458410	120	1614	107
1989-90	1066768	279	3718	247	489236	128	1705	113
1990-91	1217349	318	4200	279	526234	138	1815	120
1991-92	1510165	395	5140	341	536466	140	1826	121
1992-93	1717520	449	5768	382	575161	150	1932	128
1993-94	1968826	515	6524	433	634665	166	2103	169
1994-95	2317583	606	7578	503	658375	172	2153	143
1995-96	2790942	730	9004	597	681948	178	2200	146

TABLE - V

**GROSS STATE DOMESTIC PRODUCT AT FACTOR COST BY INDUSTRY OF ORIGIN
(AT CURRENT PRICES) 1980-81 TO 1997-98**

(Base Year - 1980-91)

Sl. No.	Industry of Origin	1980-81	1981-82	1982-83	1983-84	1984-85	1985-86
1	2	3	4	5	6	7	8
1	Agriculture	135345	138000	161686	208200	225234	215930
2	Forestry & Logging	12532	8205	14583	8315	8723	9370
3	Fishing	8852	7338	9284	10439	10380	13613
4	Mining & Quarrying	548	750	897	831	1229	1161
Sub Total - Primary		157277	154293	186450	227785	245566	240074
5	Manufacturing	62304	72493	84131	89517	95011	104607
5.1	Registered	35095	40580	45066	50999	54885	59594
5.2	Un-registered	27209	31913	39065	38518	40126	45013
6	Electricity, Gas and Water supply	9251	8175	8203	8130	11482	11109
6.1	Electricity	8557	7324	7329	6972	10616	9649
6.2	Gas	85	95	101	109	87	459
6.3	Water supply	609	756	773	1049	779	1001
7	Construction	36297	40595	45047	55771	63539	81178
Sub Total - Secondary		107852	121263	137381	153418	170032	196894
8	Transport, Storage and Communication	22769	27176	33768	39868	50205	57942
8.1	Railways	1269	1884	2275	2570	2628	3729
8.2	Transport by Other means & storage	18331	22137	27610	32757	42161	48128
8.3	Communication	3169	3155	3883	4541	5416	6085
9	Trade, Hotel and Restaurants	60159	63178	73549	86180	93581	94656
10	Banking & Insurance	11648	16486	20138	23294	27713	32076
11	Real Estate and Ownership of Dwellings	20451	22270	24807	26077	27634	30486
12	Public Administration	17178	19285	20055	22144	29093	36666
13	Other Services	31236	37007	41102	48478	53832	63207
Sub Total - Tertiary		163441	185402	213419	246041	282058	315033
Gross State Domestic Product		428570	460958	537250	627244	697656	752001
Population ('000)		25357	25699	26046	26398	26754	27115
Per Capita Income (Rs)		1690	1794	2063	2376	2608	2773

(contd..)

Table - V (contd)

(Rs. in Lakhs)

Sl. No.	Industry of Origin	1986-87	1987-88	1988-89	1989-90	1990-91	1991-92
1	2	9	10	11	12	13	14
1	Agriculture	248430	277234	303214	328572	374558	557214
2	Forestry & Logging	10285	7584	6702	10288	8604	12559
3	Fishing	14038	12698	19873	31982	41231	55380
4	Mining & Quarrying	1159	1599	2736	3125	4450	5228
Sub Total - Primary		273912	299115	332525	373967	428843	630381
5	Manufacturing	114235	140852	154690	204191	220024	280517
5.1	Registered	65600	95269	105951	134582	112221	152374
5.2	Un-registered	48635	45583	48739	69609	107803	128143
6	Electricity, Gas and Water Supply	15560	14770	16997	21585	21782	21950
6.1	Electricity	13226	11919	13537	17555	16203	16510
6.2	Gas	909	960	1099	1177	1383	1586
6.3	Water supply	1425	1891	2361	2853	4196	3854
7	Construction	80450	86929	99894	107719	124283	136472
Sub Total - Secondary		210245	242551	271581	333495	366089	438939
8	Transport, Storage and Communication	68632	83967	95638	110015	126971	149034
8.1	Railways	4143	5391	6218	5686	6423	7496
8.2	Transport by Other means & storage	56811	69597	76552	89075	102123	120449
8.3	Communication	7678	8979	12868	15254	18425	21089
9	Trade, Hotel and Restaurants	114602	127490	137209	151755	175436	192876
10	Banking & Insurance	37853	41245	50922	63160	73918	79227
11	Real Estate and Ownership of Dwellings	32085	33302	35926	39475	42629	46283
12	Public Administration	45464	51558	55121	58731	80013	90261
13	Other Services	70795	78607	88334	90672	115911	125966
Sub Total - Tertiary		369441	416169	463150	513808	614878	683647
Net State Domestic Product		853598	957835	1067256	1221270	1409810	1752967
Population ('000)		27481	28114	28402	28693	28987	29378
Per Capita Income (Rs)		3106	3407	3758	4256	4864	5967

(contd..)

Table - V (contd)

(Rs. in Lakhs)

Sl. No.	Industry of Origin	1992-93	1993-94	1994-95	1995-96	1996-97	1997-98
1	2	15	16	17	18	19	20
1	Agriculture	573863	634985	762113	956069	1096898	1291156
2	Forestry & Logging	14618	23280	34941	25152	29176	33845
3	Fishing	60939	64326	77543	84119	93549	104176
4	Mining & Quarrying	6055	6797	8214	8857	10172	11825
Sub Total - Primary		655475	729388	882811	1074197	1229795	1441002
5	Manufacturing	315079	349494	404072	478634	562636	655216
5.1	Registered	166647	189266	219238	285628	345524	414352
5.2	Un-registered	148432	160228	184834	193006	217112	240864
6	Electricity, Gas and Water Supply	35222	37156	40657	47032	50783	53957
6.1	Electricity	29120	29170	32553	37821	40642	42788
6.2	Gas	1862	2158	2219	3113	3508	3954
6.3	Water supply	4240	5828	5885	6098	6633	7215
7	Construction	167731	204347	219411	270579	316713	366722
Sub Total - Secondary		518032	590997	664140	796245	930132	1075895
8	Transport, Storage and Communication	189957	222183	299889	334867	383304	434163
8.1	Railways	9210	9746	10949	12328	13592	15186
8.2	Transport by Other means & storage	150864	175440	243780	264194	291769	327485
8.3	Communication	29883	36997	45160	58345	72943	91492
9	Trade, Hotel and Restaurants	246437	252343	329914	391566	459189	561726
10	Banking & Insurance	92427	115166	139110	184882	233136	295150
11	Real Estate and Ownership of Dwellings	52851	56276	60958	66156	71296	77143
12	Public Administration	102005	122687	128109	146910	166199	184049
13	Other Services	136539	162602	187778	208743	240555	274137
Sub Total - Tertiary		820216	931257	1145758	1333124	1553679	1826368
Net State Domestic Product		1993723	2251642	2692709	3203566	3713606	4343265
Population ('000)		29775	30177	30584	30997	31415	31839
Per Capita Income (Rs)		6696	7461	8804	10335	11821	13641

Population based on 1991 Census.

* 1996-97 Provisional.

** 1997-98 Quick estimates.

TABLE - VI

**GROSS STATE DOMESTIC PRODUCT AT FACTOR COST BY INDUSTRY OF ORIGIN
(AT CONSTANT PRICES) 1980-81 TO 1995-96**

(Base Year - 1980-81)

(Rs. in Lakhs)

Sl. No.	Industry of Origin	1980-81	1981-82	1982-83	1983-84	1984-85	1985-86
1	2	3	4	5	6	7	8
1	Agriculture	135345	136737	135256	125540	139222	145373
2	Forestry & Logging	12532	7427	9011	5454	4936	4713
3	Fishing	8852	6660	7960	8673	7616	8090
4	Mining & Quarrying	548	690	602	458	702	659
Sub Total - Primary		157277	151514	152829	140125	152476	158835
5	Manufacturing	62304	67303	73545	69876	68012	70754
5.1	Registered	35095	37630	39790	39559	37339	38945
5.2	Un-registered	27209	29673	33755	30317	30673	31809
6	Electricity, Gas and Water supply	9251	7605	7184	6242	7749	7167
6.1	Electricity	8557	6792	6471	5408	7222	6306
6.2	Gas	85	84	87	95	67	354
6.3	Water supply	609	729	626	739	460	507
7	Construction	36297	33272	30565	33116	33159	37458
Sub Total - Secondary		107852	108180	111294	109234	108920	115379
8	Transport, Storage and Communication	22769	25216	27300	28816	32583	34743
8.1	Railways	1269	1529	1548	1635	1684	2023
8.2	Transport by Other means & storage	18331	20226	22169	23263	26755	28461
8.3	Communication	3169	3461	3583	3918	4144	4259
9	Trade, Hotel and Restaurants	60159	59972	62385	58896	63071	63835
10	Banking & Insurance	11648	12437	13930	15241	17243	19625
11	Real Estate and Ownership of Dwellings	20451	21035	21750	22491	23187	23818
12	Public Administration	17178	17440	18946	19747	21722	23656
13	Other Services	31236	32168	32951	33680	34276	35278
Sub Total - Tertiary		163441	168268	177262	178871	192082	200955
Gross State Domestic Product		428570	427962	441385	428230	453478	475169
Population ('000)		25357	25699	26046	26398	26754	27115
Per Capita Income (Rs)		1690	1665	1695	1622	1695	1752

(contd..)

Table - VI (contd)

(Rs. in Lakhs)

Sl. No.	Industry of Origin	1986-87	1987-88	1988-89	1989-90	1990-91	1991-92
1	2	9	10	11	12	13	14
1	Agriculture	138542	144962	166929	163560	177182	192088
2	Forestry & Logging	4611	3274	3196	3510	2639	3505
3	Fishing	6918	5504	7310	6909	10569	9666
4	Mining & Quarrying	788	790	1857	1274	1828	1912
Sub Total - Primary		150859	154530	179292	175253	192218	207171
5	Manufacturing	65828	74691	79300	93341	91885	99381
5.1	Registered	34136	48806	53782	60351	45618	54419
5.2	Un-registered	31692	25885	25518	32990	46267	44962
6	Electricity, Gas and Water Supply	8110	7599	8636	11431	10337	8008
6.1	Electricity	6882	6107	6872	9495	7928	5896
6.2	Gas	612	645	717	794	934	944
6.3	Water supply	616	847	1047	1142	1475	1168
7	Construction	34818	33396	37437	39308	42497	43104
Sub Total - Secondary		108756	115686	125373	144080	144719	150493
8	Transport, Storage and Communication	37435	40318	42529	44809	47681	48289
8.1	Railways	1986	2059	2127	1914	1970	2539
8.2	Transport by Other means & storage	30865	33393	34886	37065	39504	39311
8.3	Communication	4584	4866	5516	5830	6207	6439
9	Trade, Hotel and Restaurants	62752	64623	70771	74369	75632	80497
10	Banking & Insurance	23536	27736	29692	36525	38505	37127
11	Real Estate and Ownership of Dwellings	24505	25446	26552	27036	38276	28811
12	Public Administration	26536	28321	30020	32521	35122	33203
13	Other Services	35819	36570	37132	37756	38390	39501
Sub Total - Tertiary		210583	223014	236696	253016	273606	267428
Net State Domestic Product		470198	493230	541361	572349	610543	625092
Population ('000)		27481	28114	28402	28693	28987	29378
Per Capita Income (Rs)		1711	1754	1906	1995	2106	2128

(contd..)

Table - VI (contd)

(Rs. in Lakhs)

Sl. No.	Industry of Origin	1992-93	1993-94	1994-95	1995-96	1996-97	1997-98
1	2	15	16	17	18	19	20
1	Agriculture	192573	200078	213404	218739	225848	235062
2	Forestry & Logging	3405	3981	4907	3020	3106	3194
3	Fishing	9935	10141	10058	9835	10123	10412
4	Mining & Quarrying	2109	1733	1210	1508	1590	1676
Sub Total - Primary		208022	215933	229579	233102	240667	250344
5	Manufacturing	106087	112478	118281	123511	133479	142932
5.1	Registered	56110	61450	63918	74772	82683	89992
5.2	Un-registered	49977	51028	54363	48739	50796	52940
6	Electricity, Gas and Water Supply	11941	12362	12234	12910	13196	13489
6.1	Electricity	9805	9471	9491	9901	10126	10356
6.2	Gas	948	999	1027	1413	1447	1412
6.3	Water supply	1188	1892	1716	1596	1623	1651
7	Construction	46063	66346	63968	58950	63772	68989
Sub Total - Secondary		164091	191186	194483	195371	210447	225410
8	Transport, Storage and Communication	60081	66080	69803	77767	84070	90679
8.1	Railways	2451	2354	2619	2802	2887	2976
8.2	Transport by Other means & storage	49138	54578	56780	60444	64129	67675
8.3	Communication	8492	9148	10404	14521	17054	20028
9	Trade, Hotel and Restaurants	83145	88061	91891	97036	102169	107359
10	Banking & Insurance	41694	49475	55390	63948	71530	82581
11	Real Estate and Ownership of Dwellings	29875	30416	31325	31085	31502	31876
12	Public Administration	37523	45782	47183	48866	50488	52230
13	Other Services	42976	43431	43887	44949	45628	46385
Sub Total - Tertiary		295294	323245	339479	363651	385387	411110
Net State Domestic Product		667407	730364	763541	792124	836501	886864
Population ('000)		29775	30177	30584	30997	31415	31839
Per Capita Income (Rs)		2242	2420	2497	2555	2663	2785

Population based on 1991 Census.

* 1996-97 Provisional.

** 1997-98 Quick estimates.

TABLE - VII

**NET STATE DOMESTIC PRODUCT AT FACTOR COST BY INDUSTRY OF ORIGIN
(AT CURRENT PRICES) 1980-81 TO 1995-96**

(Base Year - 1980-81)

(Rs. in Lakhs)

Sl. No.	Industry of Origin	1980-81	1981-82	1982-83	1983-84	1984-85	1985-86
1	2	3	4	5	6	7	8
1	Agriculture	129384	131163	153826	199323	214908	203536
2	Forestry & Logging	12382	8048	14364	8097	8448	9018
3	Fishing	7743	6292	7923	8938	8942	11777
4	Mining & Quarrying	461	640	754	690	1014	920
Sub Total - Primary		149970	146143	176867	217048	233312	225251
5	Manufacturing	53152	61585	71171	75013	79448	86335
5.1	Registered	29030	33461	36610	41755	45368	47610
5.2	Un-registered	24122	28124	34561	33258	34080	38725
6	Electricity, Gas and Water Supply	5509	3647	2797	1785	4307	2360
6.1	Electricity	5077	3111	2293	1102	3772	1363
6.2	Gas	85	95	101	109	87	459
6.3	Water supply	347	441	403	574	448	538
7	Construction	34496	38427	42657	52889	60378	77439
Sub Total - Secondary		93157	103659	116625	129687	144133	166134
8	Transport, Storage and Communication	13625	14725	18781	23676	32009	37448
8.1	Railways	419	835	1010	1181	1039	1529
8.2	Transport by Other means & storage	10770	11482	14769	18976	26838	31446
8.3	Communication	2436	2408	3002	3519	4132	4473
9	Trade, Hotel and Restaurants	57577	60383	70111	81958	88750	89131
10	Banking & Insurance	11428	16206	19803	22873	27198	31424
11	Real Estate and Ownership of Dwellings	12198	12359	13152	12868	13159	10463
12	Public Administration	15133	16873	17489	19259	25191	30806
13	Other Services	29185	34625	38322	44959	50393	59684
Sub Total - Tertiary		139146	155171	177658	205593	236700	258956
Net State Domestic Product		382273	404973	471150	552328	614145	650341
Population ('000)		25357	25699	26046	26398	26754	27115
Per Capita Income (Rs)		1508	1576	1809	2092	2296	2398

(contd..)

Table - VII (contd)

(Rs. in Lakhs)

Sl. No.	Industry of Origin	1986-87	1987-88	1988-89	1989-90	1990-91	1991-92
1	2	9	10	11	12	13	14
1	Agriculture	234755	261685	285915	308536	351843	527417
2	Forestry & Logging	9872	7170	6287	9996	8376	12446
3	Fishing	12104	10661	16845	28370	37193	50685
4	Mining & Quarrying	912	1159	1966	2219	3189	3528
Sub Total - Primary		257643	280675	311013	349121	400601	594076
5	Manufacturing	90178	112815	131873	177944	191390	232742
5.1	Registered	48892	75186	92453	120182	100146	124154
5.2	Un-registered	41286	37629	39420	57762	91244	108588
6	Electricity, Gas and Water Supply	5920	3420	3163	12585	11632	12015
6.1	Electricity	4305	1523	1014	10140	8709	9147
6.2	Gas	909	960	1099	1177	1383	1586
6.3	Water supply	706	937	1050	1268	1540	1282
7	Construction	76657	82617	94989	102161	117771	129213
Sub Total - Secondary		172755	198852	230025	292690	320793	373970
8	Transport, Storage and Communication	44678	56718	64082	73748	80428	87275
8.1	Railways	1898	2967	3336	2881	3310	3769
8.2	Transport by Other means & storage	37016	47032	50493	59076	62853	67368
8.3	Communication	5764	6719	10253	11791	14265	16138
9	Trade, Hotel and Restaurants	107859	125020	129161	142853	164734	180437
10	Banking & Insurance	37053	39359	49637	61310	71661	76413
11	Real Estate and Owner of Dwellings	9055	7572	4347	4031	4353	586
12	Public Administration	39146	44417	48096	55206	69447	77716
13	Other Services	67248	73143	81811	87809	105332	119692
Sub Total - Tertiary		305039	346229	377134	424957	495955	542119
Net State Domestic Product		735437	825756	918172	1066768	1217349	1510165
Population ('000)		27481	28114	28402	28693	28987	29378
Per Capita Income (Rs)		2676	2937	3233	3718	4200	5140

(contd..)

(Rs. in Lakhs)

Table - VII (contd)

Sl. No.	Industry of Origin	1992-93	1993-94	1994-95	1995-96	1996-97	1997-98
1	2	15	16	17	18	19	20
1	Agriculture	544163	604125	726528	918830	1054174	1240865
2	Forestry & Logging	14477	23118	34591	24901	28885	33507
3	Fishing	56049	58494	71937	75311	83755	93269
4	Mining & Quarrying	4106	4712	5586	5772	6507	7363
Sub Total - Primary		618795	690449	838642	1024814	1173321	1375004
5	Manufacturing	265457	287878	313929	377366	433587	492368
5.1	Registered	137984	150675	164648	215278	251595	290466
5.2	Un-registered	127473	137203	149281	162088	181992	201902
6	Electricity, Gas and Water Supply	23424	23556	25327	30189	32239	34444
6.1	Electricity	20275	18823	20508	23827	25197	26646
6.2	Gas	1862	2158	2219	3113	3508	3954
6.3	Water supply	1287	2575	2600	3249	3534	3844
7	Construction	159965	195008	209669	259621	304665	357524
Sub Total - Secondary		448846	506442	548925	667176	770491	884336
8	Transport, Storage and Communication	112323	167502	200691	232183	272949	317007
8.1	Railways	5013	5161	5137	6086	6511	7053
8.2	Transport by Other means & storage	84210	133294	159968	180312	209829	240359
8.3	Communication	23100	29047	35586	45785	56609	69595
9	Trade, Hotel and Restaurants	230543	236068	308272	365819	428813	523838
10	Banking & Insurance	88841	110703	133302	176620	222259	280601
11	Real Estate and Ownership of Dwellings	649	824	475	318	342	371
12	Public Administration	87077	106247	109544	126950	144291	159990
13	Other Services	130446	150591	177732	197062	226185	259095
Sub Total - Tertiary		649879	771935	930016	1098952	1294839	1540902
Net State Domestic Product		1717520	1968826	2317583	2790942	3238651	3800242
Population ('000)		29775	30177	30584	30997	31415	31839
Per Capita Income (Rs)		5768	6524	7578	9004	10309	11936

Population based on 1991 Census.

* 1996-97 Provisional.

** 1997-98 Quick estimates.

TABLE - VIII

NET STATE DOMESTIC PRODUCT AT FACTOR COST BY INDUSTRY OF ORIGIN
(AT CONSTANT PRICES) 1980-81 TO 1995-96

(Base Year - 1980-81)

(Rs. in Lakhs)

Sl. No.	Industry of Origin	1980-81	1981-82	1982-83	1983-84	1984-85	1985-86
1	2	3	4	5	6	7	8
1	Agriculture	129384	130483	128638	118576	131975	137924
2	Forestry & Logging	12382	7283	8832	5288	4749	4507
3	Fishing	7743	5797	6958	7691	6764	7042
4	Mining & Quarrying	461	590	481	345	540	496
Sub Total - Primary		149970	144153	144909	131900	144028	149969
5	Manufacturing	53152	57178	62187	58565	56916	58480
5.1	Registered	29030	31028	32324	32388	30865	31114
5.2	Un-registered	24122	26150	29863	26177	26051	27366
6	Electricity, Gas and Water Supply	5509	3394	2438	1354	2898	1518
6.1	Electricity	5077	2885	2025	855	2566	891
6.2	Gas	85	84	87	95	67	354
6.3	Water supply	347	425	326	404	265	273
7	Construction	34496	31495	28944	31405	31509	35732
Sub Total - Secondary		93157	92067	93569	91324	91323	95730
8	Transport, Storage and Communication	13625	14271	14832	15691	18644	21034
8.1	Railways	419	646	629	686	705	836
8.2	Transport by Other means & storage	10770	10841	11352	11879	14717	16967
8.3	Communication	2436	2784	2851	3126	3222	3231
9	Trade, Hotel and Restaurants	57577	57398	59707	56368	60364	61095
10	Banking & Insurance	11428	12098	13654	14914	16867	19193
11	Real Estate and Ownership of Dwellings	12198	12166	12567	12178	11840	9011
12	Public Administration	15133	15375	17005	17515	19267	20208
13	Other Services	29185	29953	30608	31278	31825	32396
Sub Total - Tertiary		139146	141261	148373	147944	158807	162937
Net State Domestic Product		382273	377481	386851	371168	394158	408636
Population ('000)		25357	25699	26046	26398	26754	27115
Per Capita Income (Rs)		1508	1469	1485	1406	1473	1507

(contd..)

Table - VIII (contd)

(Rs. in Lakhs)

Sl. No.	Industry of Origin	1986-87	1987-88	1988-89	1989-90	1990-91	1991-92
1	2	9	10	11	12	13	14
1	Agriculture	130949	136601	156894	154730	176135	181816
2	Forestry & Logging	4389	3072	2998	3404	2561	3474
3	Fishing	5917	4592	6505	5457	9380	8847
4	Mining & Quarrying	647	525	1334	905	1310	1290
Sub Total - Primary		141902	144790	167731	164496	189386	195427
5	Manufacturing	52345	59886	67569	81268	79871	82442
5.1	Registered	25442	38518	46930	53893	40710	44341
5.2	Un-registered	26903	21368	20639	27375	39161	38101
6	Electricity, Gas and Water Supply	3157	1845	1695	6786	5736	4599
6.1	Electricity	2240	780	512	5484	4261	3267
6.2	Gas	612	645	717	794	934	944
6.3	Water supply	305	420	466	508	541	388
7	Construction	33176	31876	35599	37280	40270	40811
Sub Total - Secondary		88678	93607	104863	125334	125877	127852
8	Transport, Storage and Communication	22214	24012	24819	25125	29491	34579
8.1	Railways	807	872	879	837	873	1442
8.2	Transport by Other means & storage	17966	19538	19755	19953	24165	28667
8.3	Communication	3441	3602	4185	4335	4453	4470
9	Trade, Hotel and Restaurants	60059	61849	67734	71177	72386	77043
10	Banking & Insurance	23029	27145	28974	35596	38505	36083
11	Real Estate and Ownership of Dwellings	7639	6324	3448	2760	2813	365
12	Public Administration	22889	25269	26758	30095	32501	28846
13	Other Services	32887	33567	34083	34653	35275	36271
Sub Total - Tertiary		168717	178166	185816	199406	210971	213187
Net State Domestic Product		399297	416563	458410	489236	526234	536466
Population ('000)		27481	28114	28402	28693	28987	29378
Per Capita Income (Rs)		1453	1482	1614	1705	1815	1826

(contd..)

Table - VIII (contd)

(Rs. in Lakhs)

Sl. No.	Industry of Origin	1992-93	1993-94	1994-95	1995-96	1996-97	1997-98
1	2	15	16	17	18	19	20
1	Agriculture	182606	190354	203436	210219	217051	225907
2	Forestry & Logging	3375	3953	4416	2989	3074	3161
3	Fishing	9138	9222	9344	8805	9063	9321
4	Mining & Quarrying	1431	1201	823	983	1014	1045
Sub Total - Primary		196550	204730	218019	222996	230202	239434
5	Manufacturing	89379	92615	91908	97286	101620	106301
5.1	Registered	46459	48920	48002	56355	60243	64159
5.2	Un-registered	42920	43695	43906	40931	41377	42142
6	Electricity, Gas and Water Supply	8136	7946	7764	8500	8864	9245
6.1	Electricity	6827	6111	5979	6237	6506	6787
6.2	Gas	948	999	1027	1413	1447	1482
6.3	Water supply	361	836	758	850	911	976
7	Construction	43931	63314	61128	56562	63021	70218
Sub Total - Secondary		141446	163875	160800	162348	173505	185764
8	Transport, Storage and Communication	43254	54733	57772	59880	74707	85983
8.1	Railways	1199	863	1043	1266	1396	1560
8.2	Transport by other means & storage	35833	47273	49180	47535	59460	67106
8.3	Communication	6222	6597	7549	11079	13851	17317
9	Trade, Hotel and Restaurants	79577	84281	87838	92872	97822	102713
10	Banking & Insurance	40324	47884	53333	61364	68360	76154
11	Real Estate and Ownership of Dwellings	404	439	244	183	185	187
12	Public Administration	32599	36836	37510	38925	41338	42963
13	Other Services	41007	41887	42859	43380	44204	45004
Sub Total Tertiary		237165	266060	279556	296604	326616	353004
Net State Domestic Product		575161	634665	658375	681948	730323	778202
Population ('000)		29775	30177	30584	30997	31415	31839
Per Capita Income (Rs)		1932	2103	2153	2200	2325	2444

Population based on 1991 Census.

* 1996-97 Provisional.

** 1997-98 Quick estimates.

SECTORAL CONTRIBUTION

A study of sectoral composition of State Income reveals the role of each sector in the economy and the extent of its influence in the over all economic development of our State. The change in sectoral composition indicates the structural shifts that are taking place over the years in the economy. The following two tables give the structural shifts both at current and constant (1980-81) prices for the years 1980-81 to 1995-96 along with percentage distribution.

As seen from the tables that the share of primary sector both at current prices and constant prices is less when compared with the tertiary sector. In 1980-81 the contribution of primary sector was 39.23% whereas the contribution of tertiary sector was 36.40%. But in 1995-96 the contribution of tertiary sector is 43.49% as against the primary sector whose contribution is 32.70%. These changes in sectoral pattern reveal that the economy of Kerala is more depending on tertiary sector than Agricultural sector. In otherwards the economy of Kerala is gradually shifting from agricultural activities to non-agricultural activities. Dwindling of N.D.P in the Agricultural front and corresponding increases in secondary and tertiary is a good sign of development because almost in all under development countries the major income contribution is from agriculture. We major income contribution is from agriculture. We were also depending mostly on agriculture till 1980-81 and from 1980-81 onwards the contribution of primary sector decreases with corresponding increase in Tertiary sector. This can also be seen in the employment front also. The shift in labour force from Agriculture to Non-agriculture sectors was conspicuously noticed in 1980-81 Census also. Tremendous development has taken place in the transportation, Banking, Hotels, trade and communication etc. This trend shows that our agrarian economy is moving forward to catch up with the developed nations.

TABLE - IX

STRUCTURE OF NET STATE DOMESTIC PRODUCT AT CONSTANT PRICES (1980-81 PRICES) PERCENTAGE

Sl. No.	Industry	1980-81	1981-82	1982-83	1983-84	1984-85	1985-86	1986-87	1987-88
		3	4	5	6	7	8	9	10
1	Agriculture	33.85	34.57	33.25	31.95	33.48	33.75	32.80	32.79
2	Forestry	3.24	1.93	2.28	1.43	1.20	1.11	1.10	0.74
3	Fishing	2.02	1.53	1.80	2.07	1.72	1.72	1.48	1.10
4	Mining & Quarrying	0.12	0.16	0.13	0.09	0.14	0.12	0.16	0.13
	Sub Total (Primary)	39.23	38.19	37.46	35.54	36.54	36.70	35.54	34.76
5	Manufacturing	13.90	15.15	16.08	15.78	14.44	14.31	13.11	14.38
5.1	Registered	7.59	8.22	8.36	8.73	7.83	7.61	6.37	9.25
5.2	Unregistered	6.31	6.93	7.72	7.05	6.61	6.70	6.74	5.13
6	Electricity, Gas & Water supply	1.44	0.90	0.63	0.36	0.74	0.37	0.79	0.44
6.1	Electricity	1.33	0.77	0.52	0.23	0.65	0.22	0.56	0.19
6.2	Gas	0.02	0.02	0.02	0.02	0.02	0.08	0.15	0.15
6.3	Water supply	0.09	0.11	0.09	0.11	0.07	0.07	0.08	0.10
7	Construction	9.03	8.34	7.48	8.46	7.99	8.75	8.31	7.65
	Sub Total (Secondary)	24.37	24.39	24.19	24.60	23.17	23.43	22.21	22.47
8	Transport	3.56	3.78	3.83	4.22	4.73	5.15	5.56	5.76
8.1	Railways	0.11	0.17	0.16	0.18	0.18	0.21	0.20	0.21
8.2	Transport	2.82	2.87	2.93	3.20	3.73	4.15	4.50	4.69
8.3	Communication	0.63	0.74	0.74	0.84	0.82	0.79	0.86	0.86
9	Trade, Hotels	15.06	15.21	15.43	15.19	15.31	14.95	15.04	14.85
10	Banking	2.99	3.20	3.53	4.02	4.28	4.70	5.77	6.52
11	Real Estates	3.19	3.22	3.25	3.28	3.00	2.20	1.91	1.52
12	Public Administration	3.96	4.07	4.40	4.72	4.89	4.94	5.73	6.06
13	Other services	7.64	7.94	7.91	8.43	8.08	7.93	8.24	8.06
	Sub Total (Tertiary)	36.40	37.42	38.35	39.86	40.29	39.87	42.25	42.77
	N.S.D.P.	100	100	100	100	100	100	100	100

TABLE - X

STRUCTURE OF NET STATE DOMESTIC PRODUCT AT CURRENT PRICES PERCENTAGE

Sl. No.	Industry	1980-81	1981-82	1982-83	1983-84	1984-85	1985-86	1986-87	1987-88
1	2	3	4	5	6	7	8	9	10
1	Agriculture	33.85	32.39	32.65	36.09	34.99	31.30	31.92	31.69
2	Forestry	3.24	1.99	3.05	1.47	1.38	1.39	1.34	0.87
3	Fishing	2.02	1.55	1.68	1.62	1.46	1.81	1.65	1.29
4	Mining & Quarrying	0.12	0.16	0.16	0.12	0.16	0.14	0.12	0.14
	Sub Total (Primary)	39.23	36.09	37.54	39.30	37.99	34.64	35.03	33.99
5	Manufacturing	13.50	15.21	15.11	13.58	12.94	13.27	12.26	13.66
5.1	Registered	7.59	6.26	7.77	7.56	7.39	7.32	6.65	9.10
5.2	Unregistered	6.31	6.55	7.34	6.02	5.55	5.95	5.61	4.56
6	Electricity, Gas & Water supply	1.44	0.90	0.59	0.32	0.70	0.36	0.81	0.41
6.1	Electricity	1.33	0.77	0.49	0.20	0.61	0.21	0.59	0.18
6.2	Gas	0.02	0.02	0.02	0.02	0.02	0.07	0.12	0.12
6.3	Water supply	0.09	0.11	0.08	0.10	0.07	0.08	0.10	0.11
7	Construction	9.03	9.49	9.05	9.58	9.83	11.91	10.42	10.01
	Sub Total (Secondary)	24.37	25.60	24.75	23.48	23.47	25.54	23.49	24.08
8	Transport	3.56	3.64	3.99	4.29	5.21	5.76	6.08	6.87
8.1	Railways	0.11	0.21	0.21	0.21	0.17	0.24	0.26	0.36
8.2	Transport	2.82	2.84	3.14	3.44	4.37	4.83	5.04	5.70
8.3	Communication	0.63	0.59	0.64	0.64	0.67	0.69	0.78	0.81
9	Trade, Hotels	15.06	14.91	14.88	14.84	14.45	13.70	14.67	15.14
10	Banking	2.99	4.00	4.20	4.14	4.43	4.83	5.04	4.76
11	Real Estate	3.19	3.05	2.79	2.33	2.14	1.61	1.23	0.92
12	Public Administration	3.96	4.16	3.71	3.49	4.10	4.74	5.32	5.38
13	Other services	7.64	8.55	8.14	8.13	8.21	9.18	9.14	8.86
	Sub Total (Tertiary)	36.40	38.31	37.71	37.22	38.54	39.82	41.48	41.93
	N.S.D.P.	100	100	100	100	100	100	100	100

(Contd..)

Table - X (contd)

SI. No.	Industry	1988-89	1989-90	1990-91	1991-92	1992-93	1993-94	1994-95	1995-96
		11	12	13	14	15	16	17	18
1	Agriculture	31.14	28.92	28.90	34.93	31.69	30.69	31.35	32.92
2	Forestry	0.69	0.94	0.69	0.82	0.84	1.17	1.49	0.39
3	Fishing	1.83	2.66	3.06	3.36	3.26	2.97	3.10	2.70
4	Mining & Quarrying	0.21	0.21	0.26	0.23	0.24	0.24	0.24	0.21
	Sub Total (Primary)	33.87	32.73	32.91	39.34	36.03	35.07	36.18	36.72
5	Manufacturing	14.36	16.68	15.72	15.41	15.46	14.62	13.95	13.52
5.1	Registered	10.07	11.27	8.23	8.22	8.04	7.65	7.10	7.71
5.2	Unregistered	4.29	5.41	7.49	7.19	7.42	6.97	6.44	5.81
6	Electricity, Gas & Water supply	0.34	1.18	0.96	0.80	1.36	1.20	1.09	1.08
6.1	Electricity	0.11	0.95	0.72	0.61	1.18	0.96	0.88	0.85
6.2	Gas	0.12	0.11	0.11	0.11	0.11	0.11	0.10	0.11
6.3	Water supply	0.11	0.12	0.13	0.08	0.07	0.13	0.11	0.12
7	Construction	10.35	9.58	9.67	8.55	9.31	9.90	9.05	9.30
	Sub Total (Secondary)	25.05	27.44	26.35	24.76	26.13	25.72	23.69	23.90
8	Transport	6.98	6.91	6.61	5.78	6.54	8.51	8.66	8.32
8.1	Railways	0.36	0.27	0.27	0.25	0.29	0.26	0.22	0.22
8.2	Transport	5.50	5.54	5.17	4.46	4.90	6.77	6.90	6.46
8.3	Communication	1.12	1.10	1.17	1.07	1.35	1.48	1.54	1.64
9	Trade, Hotels	14.07	13.39	13.53	11.95	13.42	11.99	13.30	13.11
10	Banking	5.41	5.75	5.89	5.06	5.17	5.62	5.75	6.33
11	Real Estates	0.47	0.38	0.36	0.04	0.04	0.04	0.02	0.01
12	Public Administration	5.24	5.17	5.70	5.15	5.07	5.40	4.73	4.55
13	Other services	8.91	8.23	8.65	7.92	7.60	7.65	7.67	7.06
	Sub Total (Tertiary)	41.08	39.83	40.74	35.90	37.84	39.21	40.13	39.38
	N.S.D.P.	100	100	100	100	100	100	100	100

TABLE - XI

STATE INCOME BY BROAD SECTORS - 1980-81 TO 1995-96 (AT CONSTANT PRICES)

(Rs. in Lakhs)

Year	Primary Sector			Secondary Sector			Tertiary Sector			Net State Domestic Product	Population	Per Capita Income (Rs.)
	Agriculture	Forestry, Fishing and Mining	Total	Manufacturing	Electricity, Gas, Water supply and Construction	Total	Transport and Storage	Trade, Hotels, Real Estate and Public Administration	Total			
1	2	3	4	5	6	7	8	9	10	11	12	13
1980-81	129384	20586	149970	53152	40005	93157	13625	125521	139146	382273	25357	1508
1981-82	130483	13670	144153	57178	34889	92067	14271	126990	141261	377481	25699	1469
1982-83	128638	16221	144909	62187	31382	93569	14832	133541	148373	386851	26046	1485
1983-84	118576	13324	131900	58565	32759	91324	15691	132253	147944	371168	26398	1406
1984-85	131975	12053	144028	56916	34407	91323	18644	140163	158807	394158	26754	1473
1985-86	137924	12045	149969	58480	37250	95730	21034	141903	162937	408636	27115	1507
1986-87	130949	10953	141902	52345	36333	88678	22214	146503	168717	399297	27481	1453
1987-88	136601	8189	144790	59886	33721	93607	24012	154154	178166	416563	28114	1482
1988-89	156894	10837	167731	67569	37294	104863	24819	160997	185816	458410	28402	1614
1989-90	154730	9766	164496	81268	44066	125334	25125	174281	199406	489236	28693	1705
1990-91	176135	13251	189386	79871	46006	125877	29491	181480	210971	526234	28987	1815
1991-92	181810	13611	195427	82442	45410	127852	34579	178608	213187	536446	29378	1826
1992-93	182606	13944	196550	89379	52067	141446	43254	193911	237165	575161	29775	1932
1993-94	190354	14376	204730	92615	71260	163875	54733	211327	266060	634665	30177	2103
1994-95	203436	14583	218019	91908	68892	160800	57772	221784	279556	658375	30584	2153
1995-96	210219	12777	222996	97286	65062	162348	59880	236724	296604	681948	30997	2200

TABLE - XII

STATE INCOME BY BROAD SECTORS - 1980-81 TO 1995-96 (AT CURRENT PRICES)

(Rs. in Lakhs)

Year	Primary Sector			Secondary Sector			Tertiary Sector			Net State Domestic Product	Population	Per Capita Income (Rs.)
	Total			Total			Total					
	Agriculture and Fishing	Forestry and Mining		Manufacturing	Electricity, Gas, Water supply and Construction		Transport and Storage	Trade, Hotels, Real Estate and Public Administration				
1	2	3	4	5	6	7	8	9	10	11	12	13
1980-81	129384	20586	149970	53152	40005	93157	13625	125521	139146	382273	25357	1508
1981-82	131163	14980	146143	61585	42074	103659	14725	140446	155171	404973	25699	1576
1982-83	153826	23041	176867	71171	45454	116625	18781	158877	177658	471150	26046	1809
1983-84	199323	17725	217048	75013	54674	129687	23676	181917	205593	552328	26398	2092
1984-85	214908	18404	233312	79448	64685	144133	32009	204691	236700	614145	26754	2296
1985-86	203536	21715	225251	86335	79799	166134	37448	221508	258956	650341	27115	2398
1986-87	234755	22888	257643	90178	82577	172755	44678	260361	305039	735437	27481	2676
1987-88	261685	18990	280675	112815	86037	198852	56718	289511	346229	825756	28114	2937
1988-89	285915	25098	311013	131873	98152	230025	64082	313052	377134	918172	28402	3233
1989-90	308536	40585	349121	177944	114746	292690	73748	351209	424957	1066768	28693	3718
1990-91	351843	48758	400601	191390	129403	320793	80428	415527	495955	1217349	28987	4200
1991-92	527417	66659	594076	232742	141228	373970	87275	454844	542119	1510165	29378	5140
1992-93	544163	74632	618795	265457	183389	448846	112323	537556	649879	1717520	29775	5768
1993-94	604125	86324	690449	287878	218564	506442	167502	604433	771935	1968826	30177	6524
1994-95	726528	112114	838642	313929	234996	548925	200691	729325	930016	2317583	30584	7578
1995-96	918830	105984	1024814	377366	289810	667176	232183	866769	1098952	2790942	30997	9004

TABLE - XIII

STATE INCOME BY BROAD SECTORS - 1980-81 TO 1995-96 (AT CONSTANT PRICES) [PERCENTAGE INCREASE]

KERALA

Year	Primary			Secondary					Tertiary		Net	
	Agriculture	Forestry, Fishing and Mining	Total	Manu- facturing	Electricity Gas and Construc- tion	Total	Transport, Storage and Commu- nications	Trade, Hotels, Real Estate Public Administration	Total	State Domestic Product	Per Capita Income	
1	2	3	4	5	6	7	8	9	10	11	12	
1980-81	
1981-82	0.85	(-)33.60	(-)3.88	7.57	(-)12.79	(-)1.17	4.74	1.17	1.52	(-)1.25	(-)2.59	
1982-83	(-)1.38	18.66	0.52	8.76	(-)10.05	1.63	3.93	5.16	5.03	2.48	1.09	
1983-84	(-)7.86	(-)17.88	(-)8.97	(-)15.82	4.39	(-)2.40	5.79	(-)0.96	(-)0.29	(-)4.05	(-)5.32	
1984-85	11.30	(-)9.54	9.19	(-)2.82	5.03	..	18.82	5.98	7.34	6.19	4.77	
1985-86	4.51	(-)0.07	4.12	2.75	8.26	4.83	12.82	1.24	2.60	3.67	2.31	
1986-87	(-)5.06	(-)9.07	(-)5.38	(-)10.49	(-)2.46	(-)7.37	5.61	3.24	3.55	(-)2.29	(-)3.58	
1987-88	4.32	(-)25.24	2.04	14.41	(-)7.19	5.56	8.09	5.22	5.60	4.32	2.00	
1988-89	10.46	32.34	15.84	12.83	10.60	12.02	3.36	4.44	4.29	10.05	8.91	
1989-90	1.38	(-)9.88	(-)1.93	20.27	18.16	19.52	1.23	8.25	7.31	6.72	5.64	
1990-91	13.83	35.69	15.13	(-)1.72	4.40	0.43	17.38	4.13	5.80	7.56	6.45	
1991-92	3.22	2.72	3.19	3.22	(-)1.30	1.57	17.25	(-)1.58	1.05	1.94	0.61	
1992-93	0.43	2.45	0.57	8.41	14.66	10.63	25.09	8.57	11.25	7.21	5.81	
1993-94	4.24	3.10	4.16	3.62	36.86	15.86	26.54	8.98	12.18	10.35	8.85	
1994-95	6.87	1.44	6.49	(-)0.76	(-)3.32	(-)1.88	5.55	4.95	5.07	3.74	2.38	
1995-96	3.33	(-)12.38	2.28	5.85	(-)5.56	0.96	3.65	6.74	6.10	3.58	2.18	

TABLE - XIV

STATE INCOME BY BROAD SECTORS - 1980-81 TO 1995-96 (AT CURRENT PRICES) (PERCENTAGE INCREASE)

KERALA

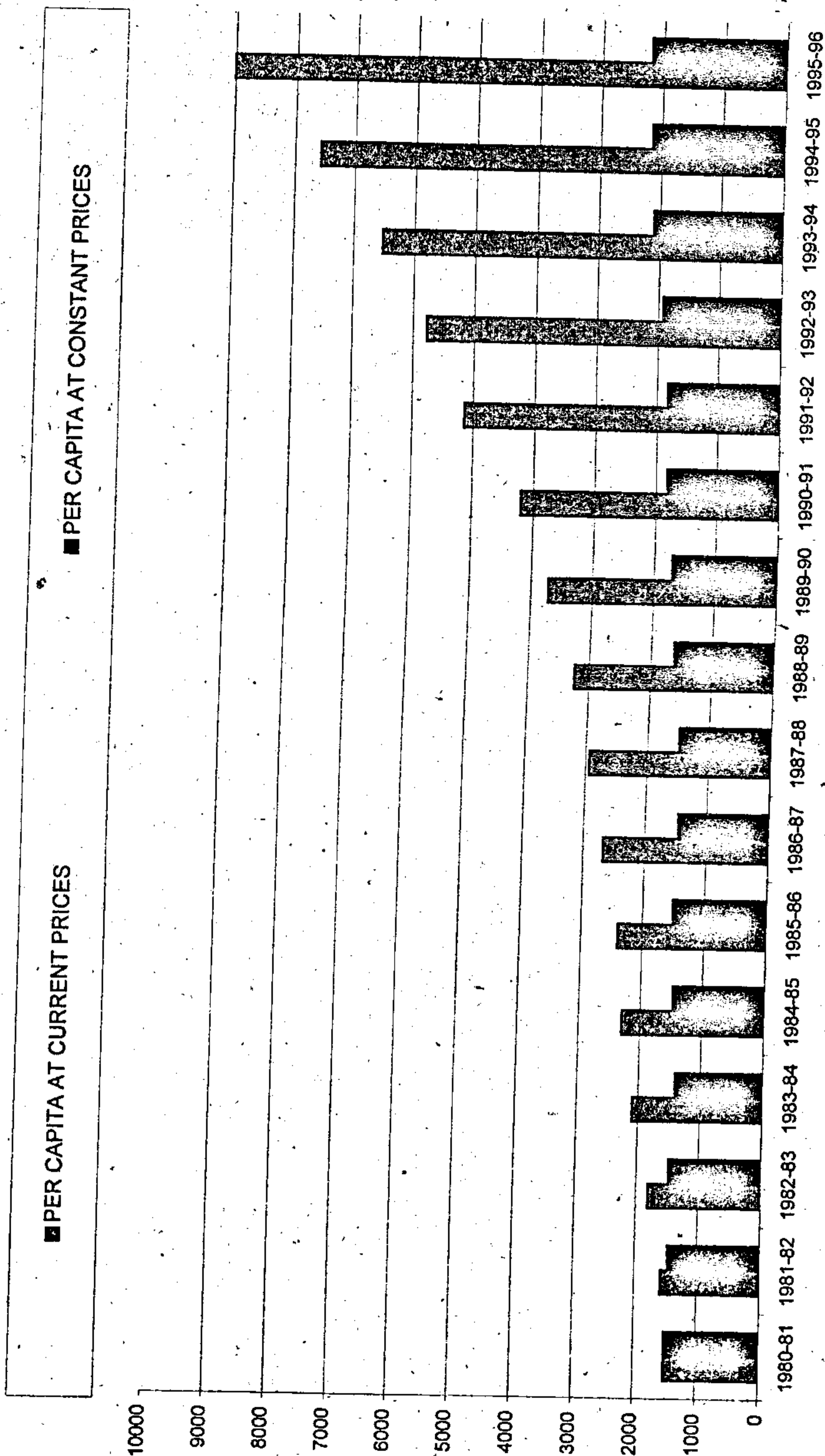
Year	Primary			Secondary			Tertiary			Net		
	Agriculture	Forestry, Fishing and Mining	Total	Manu- facturing	Electricity Gas and Construc- tion	Total	Transport, Storage and Commu- nications	Trade, Hotels, Real Estate Public Administration	Total	State Domestic Product	Per Capita Income	
1	2	3	4	5	6	7	8	9	10	11	12	
1980-81	
1981-82	1.37	(-)27.23	(-)2.55	15.87	5.17	11.27	8.07	11.89	11.52	5.94	4.51	
1982-83	17.28	53.81	21.02	15.57	8.03	12.51	27.54	13.12	14.49	16.34	14.78	
1983-84	29.58	(-)23.07	22.72	5.40	20.28	11.20	26.06	14.50	15.72	17.23	15.64	
1984-85	7.82	3.83	7.49	5.91	18.31	11.14	35.20	12.52	15.13	11.19	9.75	
1985-86	(-)5.29	17.99	(-)3.46	8.67	23.37	15.26	16.99	8.22	9.40	5.89	4.44	
1986-87	15.34	5.40	14.38	4.45	3.48	3.99	19.31	17.54	17.80	13.08	11.59	
1987-88	11.47	(-)17.03	8.94	25.10	4.19	15.11	26.95	11.20	13.50	12.28	9.75	
1988-89	9.26	32.16	10.81	16.89	14.08	15.68	12.98	8.13	8.93	11.19	10.08	
1989-90	7.91	61.71	12.25	34.94	16.91	27.24	15.08	12.19	12.68	16.18	15.00	
1990-91	14.04	20.14	14.75	7.56	12.77	9.60	9.06	18.31	16.71	14.12	12.96	
1991-92	49.90	36.71	48.30	21.61	9.14	16.58	8.51	9.46	9.31	24.05	22.38	
1992-93	3.19	11.96	4.16	14.06	29.85	20.02	28.70	18.18	19.88	13.73	12.22	
1993-94	11.02	15.67	11.58	8.45	19.18	12.83	49.13	12.44	18.78	14.63	13.11	
1994-95	20.26	29.88	21.46	9.05	7.52	8.39	19.81	20.66	20.48	17.71	16.16	
1995-96	26.47	(-)5.65	22.20	20.21	23.33	21.54	15.69	18.85	18.16	20.42	18.82	

TABLE - XV

NET STATE DOMESTIC PRODUCT AND PER CAPITA INCOME AT 1960-61 PRICES

Year	NSDP at current prices	NSDP at 1960-61 (Prices in Lakhs)	Per-centage change	Popu-lation ('000)	Per Capita Income Rs.	Per Capita Income at 1960-61 Prices Rs.	Per-centage change
1	2	3	4	5	6	7	8
1960-61	43222	43222	..	16714	259	258.6	..
1961-62	45835	43825	1.40	17096	268	256.3	-0.89
1962-63	53158	45448	3.70	17488	304	259.9	1.40
1963-64	57748	46357	2.00	17890	323	259.1	-0.31
1964-65	68495	48353	4.31	18302	374	264.2	1.97
1965-66	71452	48839	1.01	18725	382	260.8	-1.29
1966-67	83874	51378	5.20	19158	438	268.2	2.84
1967-68	88134	54788	6.64	19601	450	279.5	4.21
1968-69	106591	57447	4.85	20056	531	286.4	2.47
1969-70	126750	59965	4.38	20521	618	292.2	2.03
1970-71	131990	62420	4.09	21126	625	295.5	1.13
1971-72	134115	65810	5.43	21571	622	305.1	3.25
1972-73	153888	67413	2.44	22026	699	306.1	0.33
1973-74	191369	67113	-0.45	22473	862	298.6	-2.45
1974-75	218118	67816	-1.05	22914	952	296.0	-0.87
1975-76	233588	70807	4.41	23345	1001	303.3	2.47
1976-77	249658	69953	-1.21	23763	1051	294.4	-2.93
1977-78	261696	70922	1.39	24167	1083	293.5	-0.31
1978-79	285003	72460	2.17	24554	1161	295.1	0.55
1979-80	326424	75637	4.38	24829	1315	304.6	3.22
1980-81	382273	80930	7.0	25357	1508	319.2	4.79
1981-82	404973	79916	-1.25	25699	1576	311.0	-2.57
1982-83	471150	81899	2.48	26046	1809	314.4	1.09
1983-84	552328	78579	-4.05	26398	2092	297.7	-5.31
1984-85	614145	83446	6.19	26754	2296	311.9	4.77
1985-86	650341	86511	3.67	27115	2398	319.1	2.31
1986-87	735437	84534	-2.29	27481	2676	307.6	-3.60
1987-88	825756	88189	4.32	28114	2937	313.7	1.98
1988-89	910072	97049	10.05	28402	3233	341.7	8.93
1989-90	1066768	103575	6.72	28693	3718	361.0	5.65
1990-91	1217349	111408	7.56	28987	4200	384.3	6.45
1991-92	1510165	113577	1.95	29378	5140	386.6	0.60
1992-93	1717520	121759	7.20	29775	5768	408.9	5.79
1993-94	1968826	134360	10.35	30177	6524	445.2	8.88
1994-95	2317583	139386	3.74	30584	7578	455.7	2.36
1995-96	2790942	144371	3.58	30997	9004	465.8	2.22

PER CAPITA INCOME OF KERALA AT CURRENT AND CONSTANT (80-81) PRICES



PER CAPITA INCOME OF KERALA AT
CURRENT AND CONSTANT (80-81)PRICES

YEAR	PER CAPITA AT CURRENT PRICES	PER CAPITA AT CONSTANT PRICES
1980-81	1508	1508
1981-82	1576	1469
1982-83	1809	1485
1983-84	2092	1406
1984-85	2296	1473
1985-86	2398	1507
1986-87	2676	1453
1987-88	2937	1482
1988-89	3233	1614
1989-90	3718	1705
1990-91	4200	1815
1991-92	5140	1826
1992-93	5768	1932
1993-94	6524	2103
1994-95	7578	2153
1995-96	9004	2200

**DISTRICT-WISE DISTRIBUTION OF THE NET STATE DOMESTIC PRODUCT AND PER CAPITA INCOME OF KERALA
AT FACTOR COST BY INDUSTRY OF ORIGIN FOR THE YEAR 1990-91 (AT CURRENT PRICES)**

(Rs. in Lakhs)

Sl. No.	Industry of Origin	(Rs. in Lakhs)								
		TVM	KLM	PTA	ALP	KTM	IDK	EKM		
1	2	3	4	5	6	7	8	9		
	Sub Total (Primary)	31102	39457	20500	29963	29147	27618	40591		
5	Manufacturing	16879	17014	5018	12947	4706	2535	54023		
5.1	Registered	5027	9724	611	4106	381	1622	42672		
5.2	Un-registered	11852	7290	4407	8841	4325	913	11351		
6	Electricity, Gas & Water supply	2046	1042	544	946	996	823	1375		
6.1	Electricity	1355	867	438	737	799	763	1018		
6.2	Gas	141	119	60	101	93	53	137		
6.3	Water supply	550	56	46	108	104	7	220		
7	Construction	12673	7738	3910	6584	2391	7490	23048		
	Sub Total (Secondary)	31598	25794	9472	20477	8093	10848	78446		
8	Transport, Storage & Communication	8748	6947	4418	4947	5637	2149	11114		
8.1	Railways	320	213	-	156	210	-	334		
8.2	Transport by other means & storage	6116	5613	3847	3941	4274	1741	8988		
8.3	Communication	2312	1121	571	850	1153	408	1792		
9	Trade, Hotels & Restaurants	14348	10938	6738	12372	11350	4118	18862		
10	Banking and Insurance	9373	6227	4235	4558	5375	1383	13759		
11	Real Estate & Ownership of Dwellings	570	379	257	278	326	83	836		
12	Public Administration	116459	5903	3056	4772	5139	1181	7570		
13	Other Services	11692	8636	3476	7795	8426	2844	11271		
	Sub Total (Tertiary)	61190	39030	22180	34672	36253	11758	63412		
	Net State Domestic Product	123890	104281	52152	85112	73493	50224	182449		
	Population ('000)	2936	2397	1183	1994	1820	1075	2806		
	Per Capita Income (Rs)	4220	4350	4408	4268	4038	4672	6502		

(contd..)

Base Year = 1980-81

Table - XVII (contd)

No.	Industry of Origin	(Rs. in Lakhs)										STATE
		TSR 10	PLKD 11	MLPM 12	KKD 13	WYD 14	KNR 15	KSGD 16				
1	Agriculture	29872	28464	25262	22764	16959	21392	14953	191390	17	351843	
2	Forestry and Logging	683	348	3123	406	599	212	63	8376		8376	
3	Fishing	2107	156	4953	3714	-	1727	2276	37193		37193	
4	Mining and Quarring	288	232	361	500	29	537	243	3189		3189	
	Sub Total (Primary)	32950	29200	33699	27384	17587	23868	17535	400601			
5	Manufacturing	22224	15190	3900	17179	3144	12322	4309	191390		191390	
5.1	Registered	14431	6029	1382	6850	471	5578	1262	100146		100146	
5.2	Un-registered	7793	9161	2518	10329	2673	6744	3047	91244		91244	
6	Electricity, Gas and Water supply	1040	728	488	876	96	435	197	11632		11632	
6.1	Electricity	807	582	291	617	57	260	118	8709		8709	
6.2	Gas	133	112	130	122	30	105	47	1383		1383	
6.3	Water supply	100	34	67	137	9	70	32	1540		1540	
7	Construction	13048	7654	7243	12012	942	9033	4005	117771		117771	
	Sub Total (Secondary)	36312	23572	11631	30067	4182	21790	8511	320793			
8	Transport, Storage and Communication	9961	4708	5697	6198	1124	6825	1955	80428		80428	
8.1	Railways	248	520	358	498	-	453	-	3310		3310	
8.2	Transport by other means and Storage	8121	3136	4550	4594	936	5041	1955	62853		62853	
8.3	Communication	1592	1052	789	1106	188	1331	-	14265		14265	
9	Trade, Hotel & Restaurants	16984	13228	13294	18879	2619	14464	6540	164734		164734	
10	Banking and Insurance	7460	4464	3347	4780	939	5761	-	71661		71661	
11	Real Estate & Ownership of Dwellings	453	270	204	292	-57	239	109	4353		4353	
12	Public Administration	5347	4584	3750	5417	833	5417	69	69447		69447	
13	Other Services	11165	7373	8321	10007	1475	8532	4319	105332		105332	
	Sub Total (Tertiary)	51370	34627	34613	45573	7047	41238	12992	495955			
	Net State Domestic Product	120632	87399	79943	103024	28816	86896	39038	1217349			
	Population ('000)	2728	2374	3084	2609	670	2244	1067	28987			
	Per Capita Income (Rs)	4422	3682	2592	3949	4301	3872	3659	4200			

**DISTRICT-WISE DISTRIBUTION OF THE NET STATE DOMESTIC PRODUCT AND PER CAPITA INCOME OF KERALA
AT FACTOR COST BY INDUSTRY OF ORIGIN FOR THE YEAR 1990-91 (AT CONSTANT PRICES)**

Base Year = 1980-81

(Rs. in Lakhs)

Sl. No.	Industry of Origin	(Rs. in Lakhs)								
		1	2	3	4	5	6	7	8	9
		TVM	KLM	PTA	ALP	KTM	IDK	EKM		
1	Agriculture	14725	15852	9670	11554	14355	13210	16839		
2	Forestry and Logging	1	197	308	-	16	362	16		
3	Fishing	383	1733	27	1707	86	5	1722		
4	Mining and Quarrying	57	78	35	49	54	11	127		
	Sub Total (Primary)	15166	17860	10040	13310	14511	13588	18704		
5	Manufacturing	7131	7082	2139	5464	2012	1051	22218		
5.1	Registered	2044	3953	248	1669	155	659	17347		
5.2	Un-registered	5087	3129	1891	3795	1857	392	4871		
6	Electricity, Gas and Water supply	952	525	271	467	491	410	668		
6.1	Electricity	663	424	214	361	391	373	498		
6.2	Gas	95	81	41	68	63	35	93		
6.3	Water supply	194	20	16	38	37	2	77		
7	Construction	4333	2646	1337	2251	818	2561	7881		(40)
	Sub Total (Secondary)	12416	10253	3747	8182	3321	4022	30767		
8	Transport, Storage & Communication	3158	2564	1657	1821	2058	796	4103		
8.1	Railways	85	56	-	41	55	-	88		
8.2	Transport by other means & storage	2351	2158	1479	1515	1643	669	3456		
8.3	Communication	722	350	178	265	360	127	559		
9	Trade, Hotel and Restaurants	6305	4806	2961	5436	4987	1810	8288		
10	Banking and Insurance	5037	3346	2276	2449	2888	743	7393		
11	Real Estate & Ownership of Dwellings	369	245	166	180	211	53	540		
12	Public Administration	7703	2763	1430	2210	2404	553	3542		
13	Other Services	3916	2893	1164	2610	2822	952	3775		
	Sub Total (Tertiary)	26488	16617	9654	14706	15370	4907	27641		
	Net State Domestic Product	54070	44730	23441	36198	33202	22517	77112		
	Population ('000)	2936	2397	1183	1994	1820	1075	2806		
	Per Capita Income (Rs)	1842	1866	1981	1815	1824	2095	2748		

(contd..)

No.	Industry of Origin	TSR	PLKD	MLPM	KKD	WYD	KNR	KSGD	STATE
1	2	10	11	12	13	14	15	16	17
1	Agriculture	14954	14249	12646	11396	8490	10709	7486	176135
2	Forestry and Logging	209	106	955	124	183	65	19	2561
3	Fishing	537	46	1220	920	-	430	564	9380
4	Mining and Quarrying	118	95	148	205	12	221	100	1310
	Sub Total (Primary)	15818	14496	14969	12645	8685	11425	8169	189386
5	Manufacturing	9211	6382	1643	7218	1338	5161	1821	79871
5.1	Registered	5866	2451	562	2785	191	2267	513	40710
5.2	Un-registered	3345	3931	1081	4433	1147	2894	1308	39161
6	Electricity, Gas and Water supply	520	372	253	432	51	223	101	5736
6.1	Electricity	395	285	142	302	28	127	58	4261
6.2	Gas	90	75	88	82	20	71	32	934
6.3	Water supply	35	12	23	48	3	25	11	541
7	Construction	4462	2617	2477	4108	322	3088	1369	40270
	Sub Total (Secondary)	14193	9371	4373	11758	1711	8472	3291	125877
8	Transport, Storage and Communication	3686	1672	2090	2242	419	2473	752	29491
8.1	Railways	66	137	94	131	-	120	-	873
8.2	Transport by other means and storage	3122	1206	1750	1766	360	1938	752	24165
8.3	Communication	498	329	246	345	59	415	-	4453
9	Trade, Hotel and Restaurants	7463	5813	5842	8295	1151	6355	2874	72386
10	Banking and Insurance	4008	2399	1798	2568	504	3096	-	38505
11	Real Estate and Ownership of Dwellings	293	174	132	188	37	155	70	2813
12	Public Administration	2503	2145	1755	2535	390	2535	33	32501
13	Other Services	3739	2469	2787	3351	494	2857	1446	35275
	Sub Total (Tertiary)	21692	14672	14404	19179	2995	17471	5175	210971
	Net State Domestic Product	51703	38539	33746	43582	13391	37368	16635	526234
	Population ('000)	2728	2374	3084	2609	670	2244	1067	28987
	Per Capita Income (Rs)	1895	1623	1094	1670	1999	1665	1559	1815

**DISTRICT-WISE DISTRIBUTION OF THE NET STATE DOMESTIC PRODUCT AND PER CAPITA INCOME OF KERALA
AT FACTOR COST BY INDUSTRY OF ORIGIN FOR THE YEAR 1991-92 (AT CURRENT PRICES)**

(Rs. in Lakhs)

Base Year = 1980-81

Sl.

No.	Industry of Origin	(Rs. in Lakhs)								
		1	2	3	4	5	6	7	8	9
1	Agriculture	42668	40031	23048	26898	38818	39135	43090		
2	Forestry and Logging	2	958	1495	-	78	1760	77		
3	Fishing	421	4678	1059	9529	3259	218	22423		
4	Mining and Quarrying	153	211	93	131	145	29	344		
	Sub Total (Primary)	43244	45878	25695	36558	42300	41142	65934		
5	Manufacturing	20339	20732	6002	15612	5619	3097	66410		
5.1	Registered	6233	12056	757	5090	472	2011	52902		
5.2	Un-registered	14106	8676	5245	10522	5147	1086	13508		
6	Electricity, Gas & Water supply	2043	1094	567	981	1033	867	1410		
6.1	Electricity	1423	910	460	774	840	801	1069		
6.2	Gas	162	137	69	116	106	60	158		
6.3	Water supply	458	47	38	91	87	6	183		
7	Construction	13903	8489	4290	7223	2623	8218	25287		
	Sub Total (Secondary)	36285	30315	10859	23816	9275	12182	93107		
8	Transport, Storage & Communication	9536	7526	4769	5362	6124	2326	12039		
8.1	Railways	365	242	-	178	239	-	380		
8.2	Transport by other means & storage	6555	6016	4123	4224	4581	1866	9634		
8.3	Communication	2616	1268	646	960	1304	460	2025		
9	Trade, Hotel & Restaurants	15716	11981	7380	13551	12432	4511	20660		
10	Banking and Insurance	9995	6640	4516	4860	5731	1475	14671		
11	Real Estate & Ownership of Dwellings	77	51	35	37	44	11	113		
12	Public Administration	18419	6606	3419	5285	5751	1321	8471		
13	Other Services	13286	9815	3950	8857	9575	3232	12807		
	Sub Total (Tertiary)	67029	42619	24069	37952	39657	12876	68761		
	Net State Domestic Product	146558	118812	60623	98326	91232	66200	227802		
	Population ('000)	2976	2430	1199	2021	1845	1090	2844		
	Per Capita Income (Rs)	4925	4889	5056	4865	4945	6073	8010		

(contd..)

Base Year = 1980-81

Table - XIX (contd)

(Rs. in Lakhs)

No.	Industry of Origin	(Rs. in Lakhs)																
		TSR	PLKD	MLPM	KKD	WYD	KNR	KSGD	STATE	10	11	12	13	14	15	16	17	
1	Agriculture	41719	50421	45727	40558	20200	49208	25896	527417									
2	Forestry and Logging	1016	517	4641	604	890	315	93	12446									
3	Fishing	4146	1749	451	1328	-	1363	61	50685									
4	Mining and Quarrying	318	256	400	553	32	594	269	3528									
	Sub Total (Primary)	47199	52943	51219	43043	21122	51480	26319	594076									
5	Manufacturing	27164	18376	4710	20784	3766	14940	5191	232742									
5.1	Registered	17891	7474	1713	8492	584	6915	1564	124154									
5.2	Un-registered	9273	10902	2997	12292	3182	8025	3627	108558									
6	Electricity, Gas and Water supply	1083	767	511	902	102	451	204	12015									
6.1	Electricity	848	611	306	648	60	273	124	9147									
6.2	Gas	152	127	150	140	35	120	54	1586									
6.3	Water supply	83	29	55	114	7	58	26	1282									
7	Construction	14317	8399	7946	13180	1034	9911	4393	129213									
	Sub Total (Secondary)	42564	27542	13167	34866	4902	25302	9788	373970									
8	Transport, Storage and Communication	10790	5147	6177	6742	1219	7423	2095	87275									
8.1	Railways	282	592	408	567	-	516	-	3769									
8.2	Transport by other means and storage	8704	3362	4877	4924	1004	5403	2095	67368									
8.3	Communication	1804	1193	892	1251	215	1504	-	16138									
9	Trade, Hotel & Restaurants	18603	14489	14561	20678	2869	15843	7163	180437									
10	Banking and Insurance	7955	4761	3568	5097	1001	6143	-	76413									
11	Real Estate & Ownership of Dwellings	61	36	27	39	8	32	15	586									
12	Public Administration	5984	5129	4197	6062	932	6062	78	77716									
13	Other services	12687	8378	9456	11371	1676	9695	4907	119692									
	Sub Total (Tertiary)	56080	37940	37986	49989	7705	45198	14258	542119									
	Net State Domestic Product	145843	118425	102372	127898	33729	121980	50365	1510165									
	Population ('000)	2764	2406	3126	2644	679	2274	1080	29378									
	Per Capita Income (Rs)	5277	4922	3275	4837	4967	5364	4663	5140									

TABLE - XX

**DISTRICT-WISE DISTRIBUTION OF THE NET STATE DOMESTIC PRODUCT AND PER CAPITA INCOME OF KERALA
AT FACTOR COST BY INDUSTRY OF ORIGIN FOR THE YEAR 1991-92 (AT CONSTANT PRICES)**

(Rs. in Lakhs)

Base Year = 1980-81

Sl. No.	Industry of Origin	TVM	KLM	PTA	ALP	KTM	IDK	EKM
1	2	3	4	5	6	7	8	9
1	Agriculture	14709	13800	7945	9273	13382	13491	14854
2	Forestry and Logging	1	268	417	-	22	491	22
3	Fishing	73	817	185	1663	569	38	3913
4	Mining and Quarrying	56	77	34	48	53	11	126
	Sub Total (Primary)	14839	14962	8581	10984	14026	14031	18915
5	Manufacturing	7175	7350	2109	5510	1975	1099	23634
5.1	Registered	2226	4306	269	1818	169	718	18894
5.2	Un-registered	4949	3044	1840	3692	1806	381	4740
6	Electricity, Gas & Water supply	743	420	217	373	389	324	531
6.1	Electricity	508	325	164	277	300	286	382
6.2	Gas	96	81	41	69	63	36	94
6.3	Water supply	139	14	12	27	26	2	55
7	Construction	4391	2681	1355	2281	828	2596	7987
	Sub Total (Secondary)	12309	10451	3681	8164	3192	4019	32152
8	Transport, Storage & Communication	3653	3004	1933	2131	2401	921	4806
8.1	Railways	139	93	-	68	91	-	146
8.2	Transport by other means & storage	2789	2560	1754	1797	1949	794	4099
8.3	Communication	725	351	179	266	361	127	561
9	Trade, Hotel & Restaurants	6711	5116	3151	5786	5308	1926	8821
10	Banking and Insurance	4720	3136	2132	2295	2706	696	6928
11	Real Estate & Ownership of Dwellings	48	32	22	23	27	7	70
12	Public Administration	6836	2452	1269	1962	2135	490	3144
13	Other services	4026	2974	1197	2684	2902	979	3881
	Sub Total (Tertiary)	25994	16714	9704	14881	15479	5019	27650
	Net State Domestic Product	53142	42127	21966	34029	32697	23069	78717
	Population ('000)	2976	2430	1199	2021	1845	1090	2844
	Per Capita Income (Rs)	1786	1734	1832	1684	1772	2116	2768

(contd..)

No.	Industry of Origin	(Rs. in Lakhs)									
		TSR	PLKD	MLPM	KKD	WYD	KNR	KSGD	STATE		
1	2	10	11	12	13	14	15	16	17		
1	Agriculture	14382	17382	15763	13982	6963	16963	8927	181816		
2	Forestry and Logging	283	144	1296	168	248	88	26	3474		
3	Fishing	724	305	79	232	-	238	11	8847		
4	Mining and Quarrying	116	94	146	202	12	217	98	1290		
	Sub Total (Primary)	15505	17925	17284	14584	7223	17506	9062	195427		
5	Manufacturing	9644	6495	1664	7346	1324	5285	1832	82442		
5.1	Registered	6390	2669	612	3033	208	2470	559	44341		
5.2	Un-registered	3254	3826	1052	4313	1116	2815	1273	38101		
6	Electricity, Gas and Water supply	418	303	215	348	45	188	85	4599		
6.1	Electricity	303	218	109	231	22	98	44	3267		
6.2	Gas	90	76	89	83	21	72	33	944		
6.3	Water supply	25	9	17	34	2	18	8	388		
7	Construction	4522	2653	2510	4163	326	3130	1388	40811		
	Sub Total (Secondary)	14584	9451	4389	11857	1695	8603	3305	127852		
8	Transport, Storage and Communication	4312	1988	2479	2659	487	2913	892	34579		
8.1	Railways	108	227	156	217	-	197	-	1442		
8.2	Transport by other means	3704	1431	2076	2096	427	2299	892	28667		
8.3	and storage	500	330	247	346	60	417	-	4470		
9	Trade, Hotel and Restaurants	7943	6187	6217	8829	1225	6764	3059	77043		
10	Banking and Insurance	3756	2248	1685	2407	473	2901	-	36083		
11	Real Estate and Ownership	38	23	17	24	5	20	9	365		
12	of Dwellings	2221	1904	1558	2250	346	2250	29	28846		
13	Public Administration	3845	2539	2865	3446	508	2938	1487	36371		
	Sub Total (Tertiary)	22115	14889	14821	19615	3044	17786	5476	213187		
	Net State Domestic Product	52204	42265	36494	46056	11962	43895	17843	536466		
	Population ('000)	2764	2406	3126	2644	679	2274	1080	29378		
	Per Capita Income (Rs)	1889	1757	1167	1742	1762	1930	1652	1826		

**DISTRICT-WISE DISTRIBUTION OF THE NET STATE DOMESTIC PRODUCT AND PER CAPITA INCOME OF KERALA
AT FACTOR COST BY INDUSTRY OF ORIGIN FOR THE YEAR 1992-93 (AT CURRENT PRICES)**

Base Year = 1980-81

(Rs. in Lakhs)

Sl. No.	Industry of Origin	(Rs. in Lakhs)								
		TVM	KLM	PTA	ALP	KTM	IDK	EKM		
1	2	3	4	5	6	7	8	9		
1	Agriculture	42820	42800	24832	27225	41525	36681	47473		
2	Forestry and Logging	634	1112	2022	-	145	3843	401		
3	Fishing	2544	12062	67	5078	415	28	10980		
4	Mining and Quarrying	178	245	108	153	169	35	401		
	Sub Total (Primary)	46176	56219	27029	32456	42254	40587	59255		
5	Manufacturing	23486	23583	6999	18009	6566	3510	74653		
5.1	Registered	6927	13398	842	5657	524	2235	58795		
5.2	Un-registered	16559	10185	6157	12352	6042	1275	15858		
6	Electricity, Gas & Water supply	3803	2223	1139	1945	2071	1854	2737		
6.1	Electricity	3153	2017	1018	1719	1861	1776	2370		
6.2	Gas	189	160	81	136	124	71	185		
6.3	Water supply	461	46	40	90	86	7	182		
7	Construction	17212	10510	5311	8942	3247	10174	31305		
	Sub Total (Secondary)	44501	36316	13449	28896	11884	15538	108695		
8	Transport, Storage & Communication	14400	7578	4688	7298	8491	2531	20006		
8.1	Railways	486	321	-	236	321	-	506		
8.2	Transport by other means & storage	10172	5432	3764	5676	6299	1861	16559		
8.3	Communication	3742	1825	924	1386	1871	670	2911		
9	Trade, Hotel & Restaurants	20057	15216	9452	17291	15907	5764	26512		
10	Banking and Insurance	11638	7729	5242	5686	6663	1688	17058		
11	Real Estate & Ownership of Dwelling	71	49	24	44	38	14	129		
12	Public Administration	20689	7375	3858	5913	6418	1445	9396		
13	Other services	14610	10827	4174	10044	10697	3522	14219		
	Sub Total (Tertiary)	81465	48774	27438	46276	48214	14964	87320		
	Net State Domestic Product	172142	141309	67916	107628	102352	71089	255270		
	Population ('000)	3016	2462	1215	2048	1870	1105	2882		
	Per Capita Income (Rs)	5708	5740	5590	5255	5473	6433	8857		

Table - XXI (contd)

Sl. No.	Industry of Origin	(Rs. in Lakhs)										
		TSR 10	PLKD 11	MLPM 12	KKD 13	WYD 14	KNR 15	KSGD 16	STATE 17			
1	Agriculture	43702	50465	46450	44676	22868	46065	26581	544163			
2	Forestry and Logging	1307	2069	982	379	1141	297	145	14477			
3	Fishing	3537	213	5156	11182	-	2175	2612	56049			
4	Mining and Quarrying	369	299	465	643	38	691	312	4106			
	Sub Total (Primary)	48915	53046	53053	56880	24047	49228	29650	618795			
5	Manufacturing	30769	21105	5422	23868	4384	17106	5997	265457			
5.1	Registered	19883	8307	1904	9438	649	7686	1739	137984			
5.2	Un-registered	10886	12798	3518	14430	3735	9420	4258	127473			
6	Electricity, Gas and Water supply	2140	1533	909	1710	185	810	365	23424			
6.1	Electricity	1880	1353	677	1433	136	608	274	20275			
6.2	Gas	177	150	176	164	42	142	65	1852			
6.3	Water supply	83	30	56	113	7	60	26	1287			
7	Construction	17724	10398	9838	16316	1280	12269	5439	159965			
	Sub Total (Secondary)	50633	33036	16169	41894	5849	30185	11801	448846			
8	Transport, Storage and Communication	12725	6269	7530	8939	1673	7723	2472	112323			
8.1	Railways	376	787	541	752	-	687	-	5013			
8.2	Transport by other means and storage	9785	3773	5718	6408	1373	5558	1802	84210			
8.3	Communication	2564	1709	1271	1779	300	1478	670	23100			
9	Trade, Hotel and Restaurants	23746	18443	18674	26282	3689	20288	9222	230543			
10	Banking and Insurance	9239	5508	4176	5952	1155	4886	2221	88841			
11	Real Estate & Ownership of Dwellings	71	73	29	45	6	42	14	649			
12	Public Administration	6757	5738	4720	6844	1019	6844	61	87077			
13	Other services	13827	9001	10305	12262	1826	10436	4696	130446			
	Sub Total (Tertiary)	66365	45032	45434	60324	9368	50219	18686	649879			
	Net State Domestic Product	165913	131114	114656	159098	39264	129632	60137	1717520			
	Population ('000)	2802	2439	3168	2680	688	2304	1096	29775			
	Per Capita Income (Rs)	5921	5376	3619	5936	5707	5626	5487	5768			

**DISTRICT-WISE DISTRIBUTION OF THE NET STATE DOMESTIC PRODUCT AND PER CAPITA INCOME OF KERALA
AT FACTOR COST BY INDUSTRY OF ORIGIN FOR THE YEAR 1992-93 (AT CONSTANT PRICES)**

Base Year = 1980-81

(Rs. in Lakhs)

Sl. No.	Industry of Origin	(Rs. in Lakhs)								
		TVM	KLM	PTA	ALP	KTM	IDK	EKM		
1	2	3	4	5	6	7	8	9		
1	Agriculture	14369	14362	8333	9136	13935	12309	15931		
2	Forestry and Logging	148	259	471	-	34	896	94		
3	Fishing	415	1966	11	828	68	4	1790		
4	Mining and Quarrying	62	85	38	53	59	12	140		
	Sub Total (Primary)	14994	16672	8853	10017	14096	13221	17955		
5	Manufacturing	7907	7940	2356	6064	2211	1182	25135		
5.1	Registered	2332	4511	283	1905	177	753	19796		
5.2	Un-registered	5575	3429	2073	4159	2034	429	5339		
6	Electricity, Gas & Water supply	1288	774	394	673	714	656	944		
6.1	Electricity	1062	679	342	579	627	598	798		
6.2	Gas	97	82	41	69	63	36	95		
6.3	Water supply	129	13	11	25	24	2	51		
7	Construction	4727	2886	1458	2456	892	2794	8597		
	Sub Total (Secondary)	13922	11600	4208	9193	3817	4612	34676		
8	Transport, Storage & Communication	5453	2880	1851	2844	3261	973	7964		
8.1	Railways	116	77	-	56	77	-	121		
8.2	Transport/by other means & storage	4329	2311	1602	2415	2680	792	7059		
8.3	Communication	1008	492	249	373	504	181	784		
9	Trade, Hotel & Restaurants	6931	5284	3255	5976	5483	1989	9112		
10	Banking and Insurance	5283	3508	2379	2581	3024	766	7742		
11	Real Estate & Ownership of Dwelling	44	31	15	27	24	9	80		
12	Public Administration	7746	2761	1444	2214	2403	541	3517		
13	Other services	4593	3404	1312	3158	3363	1107	4470		
	Sub Total (Tertiary)	30050	17868	10256	16800	17558	5385	32885		
	Net State Domestic Product	58966	46140	23317	36010	35471	23218	85516		
	Population ('000)	3016	2462	1215	2048	1870	1105	2882		
	Per Capita Income (Rs)	1955	1874	1919	1758	1897	2101	2967		

Base Year = 1980-81

Table - XXII (contd)

Sl. No.	Industry of Origin	(Rs. in Lakhs)									
		TSR 10	PLKD 11	MLPM 12	KKD 13	WYD 14	KNR 15	KSGD 16	STATE 17		
1	Agriculture	14665	16935	15587	14992	7674	15458	8920	182606		
2	Forestry and Logging	305	482	229	88	266	69	34	3375		
3	Fishing	577	35	841	1823	-	354	426	9138		
4	Mining and Quarrying	129	104	162	224	13	241	109	1431		
	Sub Total (Primary)	15676	17556	16819	17127	7953	16122	9489	196550		
5	Manufacturing	10360	7106	1826	8037	1476	5760	2019	89379		
5.1	Registered	6695	2797	641	3178	218	2588	585	46459		
5.2	Un-registered	3665	4309	1185	4859	1258	3172	1434	42920		
6	Electricity, Gas and Water supply	746	539	334	598	69	294	133	8136		
6.1	Electricity	633	455	228	483	46	205	92	6827		
6.2	Gas	90	76	90	83	21	72	33	948		
6.3	Water supply	23	8	16	32	2	17	8	361		
7	Construction	4868	2855	2702	4481	351	3370	1494	43931		
	Sub Total (Secondary)	15974	10500	4862	13116	1896	9424	3646	141446		
8	Transport, Storage and Communication	4945	2253	2905	3386	665	2927	947	43254		
8.1	Railways	90	188	130	180	-	164	-	1159		
8.2	Transport by other means and storage	4164	1605	2433	2727	584	2365	767	35833		
8.3	Communication	691	460	342	479	81	398	180	6222		
9	Trade, Hotel & Restaurants	8204	6390	6422	9120	1265	6987	3159	79577		
10	Banking and Insurance	4194	2500	1895	2702	524	2218	1008	40324		
11	Real Estate & Ownership of Dwelling	44	45	18	28	4	26	9	404		
12	Public Administration	2530	2148	1767	2562	381	2562	23	32599		
13	Other services	4347	2829	3239	3855	574	3280	1476	41007		
	Sub Total (Tertiary)	24264	16165	16246	21653	3413	18000	6622	237165		
	Net State Domestic Product	55914	44221	37927	51896	13262	43546	19757	575161		
	Population ('000)	2802	2439	3168	2680	688	2304	1096	29775		
	Per Capita Income (Rs)	1996	1813	1197	1936	1928	1890	1803	1932		

TABLE - XXIII

**DISTRICT-WISE DISTRIBUTION OF THE NET STATE DOMESTIC PRODUCT AND PER CAPITA INCOME OF KERALA
AT FACTOR COST BY INDUSTRY OF ORIGIN FOR THE YEAR 1993-94 (AT CURRENT PRICES)**

Base Year = 1980-81

(Rs. in Lakhs)

Sl. No.	Industry of Origin	(Rs. in Lakhs)								
		TVM	KLM	PTA	ALP	KTM	IDK	EKM		
1	2	3	4	5	6	7	8	9		
1	Agriculture	46591	46062	26865	26748	45926	54083	48536		
2	Forestry and Logging	1026	1459	3542	-	208	640	6154		
3	Fishing	3170	14471	76	6124	404	29	12658		
4	Mining and Quarrying	204	281	124	175	194	40	460		
	Sub Total (Primary)	50991	62273	30607	33047	46732	54792	67808		
5	Manufacturing	25387	25593	7546	19473	7076	3813	81271		
5.1	Registered	7564	14630	919	6178	573	2441	64203		
5.2	Un-registered	17823	10963	6627	13295	6503	1372	17068		
6	Electricity, Gas & Water supply	4068	2151	1119	1933	2045	1744	2780		
6.1	Electricity	2927	1873	945	1596	1728	1649	2200		
6.2	Gas	219	185	94	158	144	82	215		
6.3	Water supply	922	93	80	179	173	13	365		
7	Construction	20983	12812	6474	10901	3959	12403	38163		
	Sub Total (Secondary)	50438	40556	15139	32307	13080	17960	122214		
8	Transport, Storage & Communication	21802	10902	7627	10424	12240	3588	30599		
8.1	Railways	501	330	-	243	330	-	521		
8.2	Transport by other means & storage	16595	8278	6465	8438	9557	2746	26418		
8.3	Communication	4706	2294	1162	1743	2353	842	3660		
9	Trade, Hotel & Restaurants	20561	15675	9655	17729	16265	5902	27030		
10	Banking and Insurance	14502	9631	6531	7085	8303	2103	21255		
11	Real Estate & Ownership of Dwelling	91	63	30	55	48	18	163		
12	Public Administration	25244	8999	4707	7214	7830	1764	11464		
13	Other services	16780	12326	5025	11224	12136	4023	16199		
	Sub Total (Tertiary)	98980	57596	33575	53731	56822	17398	106710		
	Net State Domestic Product	200409	160425	79321	119085	116634	90150	296732		
	Population ('000)	3057	2495	1231	2076	1895	1120	2921		
	Per Capita Income (Rs)	6556	6430	6444	5736	6155	8049	10159		

(50)

(contd..)

Base Year = 1980-81

Table - XXIII (contd)

(Rs. in Lakhs)

Sl. No.	Industry of Origin	(Rs. in Lakhs)									
		TSR 10	PLKD 11	MLPM 12	KKD 13	WYD 14	KNR 15	KSGD 16	STATE 17		
1	Agriculture	44878	43673	52250	44215	38013	55593	30692	604125		
2	Forestry and Logging	2083	3320	1563	603	1819	474	227	23118		
3	Fishing	3627	234	3627	9704	6	2907	1457	58494		
4	Mining and Quarrying	424	344	533	738	44	793	358	4712		
	Sub Total (Primary)	51012	47571	57973	55260	39882	59767	32734	690449		
5	Manufacturing	33429	22846	5866	25837	4728	18532	6481	287878		
5.1	Registered	21712	9071	2079	10306	708	8393	1898	150675		
5.2	Un-registered	11717	13775	3787	15531	4020	10139	4583	137203		
6	Electricity, Gas and Water supply	2117	1489	945	1747	187	849	382	23556		
6.1	Electricity	1745	1255	629	1331	126	565	254	18823		
6.2	Gas	206	174	203	190	48	165	75	2158		
6.3	Water supply	166	60	113	226	13	119	53	2575		
7	Construction	21607	12675	11993	19891	1560	14957	6630	195008		
	Sub Total (Secondary)	57153	37010	18804	47475	6475	34338	13493	506442		
8	Transport, Storage and Communication	18500	10437	11512	13048	2377	10898	3548	167502		
8.1	Railways	387	810	557	774	-	708	-	5161		
8.2	Transport by other means and Storage	14889	7478	9357	10037	1999	8331	2706	133294		
8.3	Communication	3224	2149	1598	2237	378	1859	842	29047		
9	Trade, Hotel & Restaurants	24339	18956	19051	27053	3753	20727	9372	236068		
10	Banking and Insurance	11513	6864	5203	7417	1439	6089	2768	110703		
11	Real Estate and Ownership of Dwelling	91	92	36	58	8	53	18	824		
12	Public Administration	8245	7002	5759	8351	1243	8351	74	106247		
13	Other Services	15897	10513	11898	14260	2127	12527	5656	150591		
	Sub Total (Tertiary)	78585	53864	53459	70187	10947	58645	21436	771935		
	Net State Domestic Product	186750	138445	130236	172922	57304	152750	67663	1968826		
	Population ('000)	2840	2472	3211	2716	697	2335	1111	30177		
	Per Capita Income (Rs)	6576	5600	4056	6367	8222	6542	6090	6524		

**DISTRICT-WISE DISTRIBUTION OF THE NET STATE DOMESTIC PRODUCT AND PER CAPITA INCOME OF KERALA
AT FACTOR COST BY INDUSTRY OF ORIGIN FOR THE YEAR 1993-94 (AT CONSTANT PRICES)**

(Rs. in Lakhs)

Base Year = 1980-81

Sl. No.	Industry of Origin	TVM	KLM	PTA	ALP	KTM	IDK	EKM
		3	4	5	6	7	8	9
1	Agriculture	14680	14514	8465	8428	14471	17041	15293
2	Forestry and Logging	176	249	606	-	36	109	1052
3	Fishing	500	2281	12	965	64	4	1996
4	Mining and Quarrying	52	72	32	45	49	10	117
	Sub Total (Primary)	15408	17116	9115	9438	14620	17164	18458
5	Manufacturing	8132	8241	2410	6239	2257	1230	26280
5.1	Registered	2456	4750	299	2005	186	793	20841
5.2	Un-registered	5676	3491	2111	4234	2071	437	5436
6	Electricity, Gas & Water supply	1357	724	376	649	684	577	933
6.1	Electricity	950	608	307	518	561	535	714
6.2	Gas	101	86	43	73	67	38	100
6.3	Water supply	300	30	26	58	56	4	119
7	Construction	6813	4160	2102	3539	1285	4027	12391
	Sub Total (Secondary)	16296	13125	4888	10427	4226	5834	39604
8	Transport, Storage & Communication	7280	3501	2511	3442	3951	1145	10358
8.1	Railways	83	55	-	41	55	-	87
8.2	Transport by other means & Storage	6128	2924	2247	3005	3362	954	9440
8.3	Communication	1069	522	264	396	534	191	831
9	Trade, Hotel & Restaurants	7341	5596	3447	6330	5807	2107	9650
10	Banking and Insurance	6273	4166	2825	3064	3591	910	9194
11	Real Estate & Ownership of Dwelling	48	34	16	29	25	10	88
12	Public Administration	8752	3120	1632	2501	2715	612	3975
13	Other Services	4692	3477	1340	3226	3434	1131	4566
	Sub Total (Tertiary)	34386	19894	11771	18592	19523	5915	37831
	Net State Domestic Product	66090	50135	25774	38457	38369	28913	95893
	Population ('000)	3057	2495	1231	2076	1895	1120	2921
	Per Capita Income (Rs)	2162	2009	2094	1857	2025	2582	3283

(contd..)

Base Year = 1980-81

Table - XXIV (contd)

Sl. No.	Industry of Origin	(Rs. in Lakhs)									
		TSR 10	PLKD 11	MLPM 12	KKD 13	WYD 14	KNR 15	KSGD 16	STATE 17		
1	Agriculture	14140	13762	16463	13932	11977	17517	9671	190354		
2	Forestry and Logging	356	568	267	103	311	81	39	3953		
3	Fishing	572	37	572	1530	1	458	230	9222		
4	Mining and Quarrying	108	88	136	188	11	202	91	1201		
	Sub Total (Primary)	15176	14455	17438	15753	12300	18258	10031	204730		
5	Manufacturing	10781	7332	1881	8292	1510	5954	2076	92615		
5.1	Registered	7049	2945	675	3346	230	2725	617	48920		
5.2	Un-registered	3732	4387	1206	4946	1280	3229	1459	43695		
6	Electricity, Gas and Water supply	716	507	335	593	68	297	136	7946		
6.1	Electricity	567	408	204	432	41	183	83	6111		
6.2	Gas	95	80	94	88	23	75	36	999		
6.3	Water supply	54	19	37	73	4	39	17	836		
7	Construction	7015	4115	3894	6458	507	4856	2152	63314		
	Sub Total (Secondary)	18512	11954	6110	15343	2085	11107	4364	163875		
8	Transport, Storage and Communication	6009	3246	3716	4127	811	3502	1134	54733		
8.1	Railways	65	136	93	130	-	118	-	863		
8.2	Transport by other means and Storage	5212	2622	3260	3489	725	2961	944	47273		
8.3	Communication	732	488	363	508	86	423	190	6597		
9	Trade, Hotel & Restaurants	8689	6768	6801	9659	1340	7400	3346	84281		
10	Banking and Insurance	4980	2969	2250	3208	622	2634	1198	47864		
11	Real Estate and Ownership of Dwelling	48	49	19	31	4	28	10	439		
12	Public Administration	2858	2427	1997	2895	431	2895	26	36836		
13	Other Services	4440	2890	3309	3937	587	3350	1508	41887		
	Sub Total (Tertiary)	27024	18349	18092	23857	3795	19809	7222	266060		
	Net State Domestic Product	60712	44758	41640	54953	18180	49174	21617	634665		
	Population ('000)	2840	2472	3211	2716	697	2335	1111	30177		
	Per Capita Income (Rs)	2138	1811	1297	2023	2608	2106	1946	2103		

**DISTRICT-WISE DISTRIBUTION OF THE NET STATE DOMESTIC PRODUCT AND PER CAPITA INCOME OF KERALA
AT FACTOR COST BY INDUSTRY OF ORIGIN FOR THE YEAR 1994-95 (AT CURRENT PRICES)**

Base Year = 1980-81
SI.

(Rs. in Lakhs)

No.	Industry of Origin	(Rs. in Lakhs)								
		TVM	KLM	PTA	ALP	KTM	IDK	EKM		
1	2	3	4	5	6	7	8	9		
1	Agriculture	56168	56914	36689	34923	60951	61424	60389		
2	Forestry and Logging	1536	2183	5299	0	312	9208	958		
3	Fishing	3518	16711	195	8409	921	79	17035		
4	Mining and Quarrying	242	334	147	208	230	47	546		
	Sub Total (Primary)	61464	76142	42330	43540	62414	70758	78928		
5	Manufacturing	27657	27914	8214	21216	7702	4160	88728		
5.1	Registered	8265	15987	1004	6751	626	2667	70157		
5.2	Un-registered	19392	11927	7210	14465	7076	1493	18571		
6	Electricity, Gas & Water supply	4346	2325	1206	2082	2205	1895	2987		
6.1	Electricity	3189	2041	1030	1739	1883	1796	2397		
6.2	Gas	226	190	96	162	148	85	221		
6.3	Water supply	931	94	80	181	174	14	369		
7	Construction	22560	13775	6961	11721	4256	13335	41032		
	Sub Total (Secondary)	54563	44014	16381	35019	14163	19390	132747		
8	Transport, Storage & Communication	26184	13074	9182	12504	14681	4323	36704		
8.1	Railways	499	329	0	243	329	0	515		
8.2	Transport by other means & storage	19916	9934	7758	10126	11470	3295	31705		
8.3	Communication	5769	2811	1424	2135	2802	1028	4484		
9	Trade, Hotel & Restaurants	26850	20469	12608	23151	21240	7707	35297		
10	Banking and Insurance	17462	11597	7865	8631	9998	2533	25594		
11	Real Estate & Ownership of Dwellings	53	36	17	32	28	10	94		
12	Public Administration	26028	9278	4853	7438	8073	1818	11820		
13	Other services	19782	14556	5936	13241	14325	4745	19124		
	Sub Total (Tertiary)	116359	69010	40461	64897	68345	21136	128633		
	Net State Domestic Product	232386	189166	99172	143456	144922	111284	340308		
	Population ('000)	3098	2529	1248	2104	1921	1135	2960		
	Per Capita Income (Rs)	7501	7480	7946	6818	7544	9805	11497		

(54)

(contd..)

Base Year = 1980-81

Table - XXV (contd)

(Rs. in Lakhs)

Sl.

No.	Industry of Origin	TSR	PLKD	MLPM	KKD	WYD	KNR	KSGD	STATE
1	2	10	11	12	13	14	15	16	17
1	Agriculture	52987	58709	51519	48161	55401	61498	30795	726528
2	Forestry and Logging	3117	4967	2338	903	2722	709	339	34591
3	Fishing	4553	662	4021	10805	15	3431	1582	71937
4	Mining and Quarrying	502	407	632	875	52	940	424	5586
	Sub Total (Primary)	61159	64745	58510	60744	58190	66578	33140	838642
5	Manufacturing	36474	24900	6392	28161	5148	20203	7060	313929
5.1	Registered	23726	9912	2272	11262	774	9171	2074	164648
5.2	Un-registered	12748	14988	4120	16899	4374	11032	4586	149281
6	Electricity, Gas and Water supply	2279	1667	1008	1873	201	905	408	25327
6.1	Electricity	1901	1368	685	1450	137	615	277	20508
6.2	Gas	211	179	209	195	50	169	78	2219
6.3	Water supply	167	60	114	228	14	121	53	2600
7	Construction	23231	13629	12895	21386	1677	16082	7129	209669
	Sub Total (Secondary)	61984	40136	20295	51420	7026	37190	14597	548925
8	Transport, Storage and Communication	22205	12415	13741	15271	2862	12697	4848	200691
8.1	Railways	386	807	554	485	0	421	569	5137
8.2	Transport by other means and storage	17869	8975	11230	12046	2399	9998	3247	159968
8.3	Communication	3950	2633	1957	2740	463	2278	1032	35586
9	Trade, Hotel & Restaurants	31783	24754	24878	35329	4902	27066	12238	308272
10	Banking and Insurance	13863	8265	6265	8931	1733	7332	3333	133302
11	Real Estate and Ownership of Dwellings	52	53	21	33	5	31	10	475
12	Public Administration	8501	7219	5937	8610	1282	8610	77	109544
13	Other services	18769	12406	14041	16831	2506	14787	6683	177732
	Sub Total (Tertiary)	95173	65112	64883	85005	13290	70523	27189	930016
	Net State Domestic Product	218316	169993	143688	197169	78506	174291	74926	2317583
	Population ('000)	2878	2505	3254	2753	707	2366	1126	30584
	Per Capita Income (Rs)	7586	6786	4416	7162	11104	7366	6654	7578

**DISTRICT-WISE DISTRIBUTION OF THE NET STATE DOMESTIC PRODUCT AND PER CAPITA INCOME OF KERALA
AT FACTOR COST BY INDUSTRY OF ORIGIN FOR THE YEAR 1994-95 (AT CONSTANT PRICES)**

Base Year = 1980-81

(Rs. in Lakhs)

Sl. No.	Industry of Origin	(Rs. in Lakhs)								
		TVM	KLM	PTA	ALP	KTM	IDK	EKM		
1	2	3	4	5	6	7	8	9		
1	Agriculture	14779	15489	9988	9250	16841	17672	16433		
2	Forestry and Logging	196	278	676	0	40	1176	122		
3	Fishing	457	2170	26	1092	120	10	2213		
4	Mining and Quarrying	36	49	22	31	34	7	80		
	Sub Total (Primary)	15468	17986	10712	10373	17035	18865	18848		
5	Manufacturing	8113	8169	2414	6223	2263	1217	25915		
5.1	Registered	2410	4661	293	1968	182	778	20453		
5.2	Un-registered	5703	3508	2121	4255	2081	439	5462		
6	Electricity, Gas & Water supply	1333	713	369	638	676	582	915		
6.1	Electricity	930	595	300	507	549	524	699		
6.2	Gas	131	91	46	78	76	54	109		
6.3	Water supply	272	27	23	53	51	4	107		
7	Construction	6577	4016	2030	3417	1241	3888	11963		
	Sub Total (Secondary)	16023	12898	4813	10278	4180	5687	38793		
8	Transport, Storage & Communication	7448	3718	2687	3615	4204	1231	10803		
8.1	Railways	101	67	0	49	67	0	104		
8.2	Transport by other means & storage	6123	3054	2385	3113	3526	1013	9748		
8.3	Communication	1224	597	302	459	611	218	951		
9	Trade, Hotel & Restaurants	7651	5832	3593	6597	6052	2196	10057		
10	Banking and Insurance	6987	4640	3147	3414	4000	1013	10240		
11	Real Estate & Ownership of Dwellings	27	19	9	16	14	5	48		
12	Public Administration	8912	3177	1662	2547	2765	623	4047		
13	Other services	4770	3510	1431	3193	3455	1144	4612		
	Sub Total (Tertiary)	35795	20896	12529	19382	20490	6212	39807		
	Net State Domestic Product	67286	51780	28054	40033	41705	30764	97448		
	Population ('000)	3098	2529	1248	2104	1921	1135	2960		
	Per Capita Income (Rs)	2172	2047	2248	1903	2171	2710	3292		

Base Year = 1980-81

Table - XXVI (contd)

(Rs. in Lakhs)

No.	Industry of Origin	(Rs. in Lakhs)										
		TSR	PLKD	MLPM	KKD	WYD	KNR	KSGD	STATE			
1	2	10	11	12	13	14	15	16	17			
1	Agriculture	14547	16752	14621	13739	16359	17893	9073	203436			
2	Forestry and Logging	398	634	299	115	348	91	43	4416			
3	Fishing	592	86	522	1404	2	445	205	9344			
4	Mining and Quarrying	74	60	93	129	8	138	62	823			
	Sub Total (Primary)	15611	17532	15535	15387	16717	18567	9383	218019			
5	Manufacturing	10667	7298	1874	8253	1512	5919	2071	91908			
5.1	Registered	6917	2890	662	3283	226	2674	605	48302			
5.2	Un-registered	3750	4408	1212	4970	1286	3245	1466	43906			
6	Electricity, Gas and Water supply	699	493	308	574	61	277	126	7764			
6.1	Electricity	554	399	199	423	40	179	81	5979			
6.2	Gas	96	76	76	85	17	63	29	1027			
6.3	Water supply	49	18	33	66	4	35	16	758			
7	Construction	6773	3973	3759	6235	489	4689	2078	61128			
	Sub Total (Secondary)	18139	11764	5941	15062	2062	10885	4275	160800			
8	Transport, Storage and Communication	6411	3480	3981	4382	836	3643	1333	57772			
8.1	Railways	79	163	113	98	0	86	116	1043			
8.2	Transport by other means and storage	5494	2759	3452	3703	738	3074	998	49180			
8.3	Communication	838	558	416	581	98	483	219	7549			
9	Trade, Hotel & Restaurants	9056	7053	7089	10066	1397	7712	3487	87838			
10	Banking & Insurance	5546	3307	2507	3573	693	2932	1334	53333			
11	Real Estate & Ownership of Dwellings	27	27	11	17	2	16	6	244			
12	Public Administration	2911	2472	2033	2948	439	2948	26	37510			
13	Other Services	4526	2992	3386	4059	604	3566	1611	42859			
	Sub Total (Tertiary)	28477	19331	19007	25045	3971	20817	7797	279556			
	Net State Domestic Product	62227	48627	40483	55494	22750	50269	21455	658375			
	Population ('000)	2878	2505	3254	2753	707	2366	1126	30584			
	Per Capita Income (Rs)	2162	1941	1244	2016	3218	2125	1905	2153			

TABLE - XXVII

**DISTRICT-WISE DISTRIBUTION OF THE NET STATE DOMESTIC PRODUCT AND PER CAPITA INCOME OF KERALA
AT FACTOR COST BY INDUSTRY OF ORIGIN FOR THE YEAR 1995-96 (AT CURRENT PRICES)**

Base Year = 1980-81

(Rs. in Lakhs)

SI. No.	Industry of Origin									
		TVM	KLM	PTA	ALP	KTM	IDK	EKM		
1	2	3	4	5	6	7	8	9		
1	Agriculture	69831	70750	49617	41347	86371	79938	79019		
2	Forestry and Logging	1148	1875	3573	0	187	6005	187		
3	Fishing	3419	16207	90	6823	557	38	14753		
4	Mining and Quarrying	251	344	152	214	237	48	562		
	Sub Total (Primary)	74649	89176	53432	48384	87352	86029	94521		
5	Manufacturing	31861	33853	9143	24534	8500	5108	111894		
5.1	Registered	10807	20903	1313	8826	818	3487	91730		
5.2	Un-registered	21054	12950	7830	15708	7682	1621	20164		
6	Electricity, Gas & Water supply	5185	2757	1432	2475	2613	2224	3556		
6.1	Electricity	3705	2371	1197	2020	2188	2087	2785		
6.2	Gas	317	268	135	229	208	119	310		
6.3	Water supply	1163	118	100	226	217	18	461		
7	Construction	27935	17057	8619	14513	5270	16512	50808		
	Sub Total (Secondary)	64981	53667	19194	41522	16383	23844	166258		
8	Transport, Storage & Communication	31165	14899	10108	13232	17372	5427	41793		
8.1	Railways	559	553	46	416	371	0	584		
8.2	Transport by other means & storage	23189	10749	8230	10069	13292	4099	35440		
8.3	Communication	7417	3617	1832	2747	3709	1328	5769		
9	Trade, Hotels & Restaurants	31863	24290	14962	27473	25205	9145	41886		
10	Banking and Insurance	23137	15366	10421	11304	13246	3356	33911		
11	Real Estate & Ownership of Dwellings	35	24	12	21	19	7	63		
12	Public Administration	30163	10753	5624	8620	9356	2108	13698		
13	Other services	21982	16476	5563	15506	16141	5093	22222		
	Sub Total (Tertiary)	138345	81808	46690	76156	81339	25136	153573		
	Net State Domestic Product	277975	224651	119316	166062	185074	135009	414352		
	Population ('000)	3140	2563	1265	2132	1947	1150	3000		
	Per Capita Income (Rs)	8853	8765	9432	7789	9506	11740	13812		

(58)

(contd..)

Base Year = 1980-81

Table - XXVII (contd)

(Rs. in Lakhs)

(59)

Sl. No.	Industry of Origin	(Rs. in Lakhs)									
		TSR 10	PLKD 11	MLPM 12	KKD 13	WYD 14	KNR 15	KSGD 16	STATE 17		
1	Agriculture	61561	71669	67074	64318	56049	74426	46860	918830		
2	Forestry and Logging	2386	3138	2381	954	1815	1123	129	24901		
3	Fishing	4752	286	6929	15025	0	2922	3510	75311		
4	Mining and Quarrying	521	419	654	905	53	972	440	5772		
	Sub Total (Primary)	69220	75512	77038	81202	57917	79443	50939	1024814		
5	Manufacturing	44866	29233	7445	33073	5760	23971	8125	377366		
5.1	Registered	31022	12960	2971	14725	1012	11991	2713	215278		
5.2	Un-registered	13844	16273	4474	18348	4748	11980	5412	162088		
6	Electricity, Gas and Water supply	2716	1914	1232	2244	245	1101	495	30189		
6.1	Electricity	2209	1589	796	1685	159	714	322	23827		
6.2	Gas	298	250	294	274	68	236	107	3113		
6.3	Water supply	209	75	142	285	18	151	66	3249		
7	Construction	28766	16875	15967	26482	2077	19913	8827	259621		
	Sub Total (Secondary)	76348	48022	24644	61799	8082	44985	17447	667176		
8	Transport, Storage and Communication	25366	14016	17993	17114	3313	14185	6200	232183		
8.1	Railways	432	909	625	543	0	528	540	6086		
8.2	Transport by other means and Storage	19852	9719	14850	13046	2718	10727	4332	180312		
8.3	Communication	5082	3388	2518	3525	595	2930	1328	45785		
9	Trade, Hotel & Restaurants	37716	29375	29522	41923	5817	32119	14523	365819		
10	Banking and Insurance	18368	10950	8301	11834	2296	9714	4416	176620		
11	Real Estate & Ownership of Dwellings	35	36	14	22	3	20	7	318		
12	Public Administration	9851	8366	6881	9978	1485	8214	1853	126950		
13	Other services	21465	14253	16089	17680	2743	15066	6783	197062		
	Sub Total (Tertiary)	112801	76996	78800	98551	15657	79318	33782	1098952		
	Net State Domestic Product	258369	200530	180482	241552	81656	203746	102168	2790942		
	Population ('000)	2917	2539	3298	2790	717	2398	1141	30997		
	Per Capita Income (Rs)	8857	7898	5472	8658	11389	8496	8954	9004		

**DISTRICT-WISE DISTRIBUTION OF THE NET STATE DOMESTIC PRODUCT AND PER CAPITA INCOME OF KERALA
AT FACTOR COST BY INDUSTRY OF ORIGIN FOR THE YEAR 1995-96 (AT CONSTANT PRICES)**

Base Year = 1980-81

(Rs. in Lakhs)

Sl. No.	Industry of Origin	(Rs. in Lakhs)								
		TVM	KLM	PTA	ALP	KTM	IDK	EKM		
1	2	3	4	5	6	7	8	9		
1	Agriculture	15977	16187	11352	9460	19761	18289	18079		
2	Forestry and Logging	138	225	429	0	22	721	22		
3	Fishing	400	1895	11	797	65	4	1726		
4	Mining and Quarrying	43	59	26	36	40	8	96		
	Sub Total (Primary)	16558	18366	11818	10293	19888	19022	19923		
5	Manufacturing	8146	8742	2321	6277	2154	1322	29105		
5.1	Registered	2829	5472	344	2310	214	913	24013		
5.2	Un-registered	5317	3270	1977	3967	1940	409	5092		
6	Electricity, Gas & Water supply	1418	774	400	692	724	605	991		
6.1	Electricity	970	621	313	529	573	546	729		
6.2	Gas	144	122	61	104	94	54	141		
6.3	Water supply	304	31	26	59	57	5	121		
7	Construction	6086	3716	1878	3162	1148	3597	11070		
	Sub Total (Secondary)	15650	13232	4599	10131	4026	5524	41166		
8	Transport, Storage & Communication	8024	3818	2619	3404	4477	1400	10858		
8.1	Railways	116	110	9	87	77	0	122		
8.2	Transport by other means & storage	6113	2833	2167	2652	3503	1079	9340		
8.3	Communication	1795	875	443	665	897	321	1396		
9	Trade, Hotel & Restaurants	8089	6167	3798	6975	6399	2322	10634		
10	Banking and Insurance	8039	5339	3620	3927	4602	1166	11782		
11	Real Estate & Ownership of Dwellings	20	14	7	12	11	4	36		
12	Public Administration	9249	3297	1724	2643	2869	646	4200		
13	Other services	4843	3622	1258	3399	3553	1132	4858		
	Sub Total (Tertiary)	38264	22257	13026	20360	21911	6670	42368		
	Net State Domestic Product	70472	53855	29443	40784	45825	31216	103457		
	Population ('000)	3140	2563	1265	2132	1947	1150	3000		
	Per Capita Income (Rs)	2244	2101	2328	1913	2354	2714	3449		

Sl. No.	Industry of Origin	(Rs. in Lakhs)																
		TSR	PLKD	MLPM	KKD	WYD	KNR	KSGD	STATE	10	11	12	13	14	15	16	17	
1	Agriculture	14085	16397	15346	14715	12823	17028	10721	210219									
2	Forestry and Logging	286	377	286	114	218	135	16	2989									
3	Fishing	556	33	810	1756	0	342	410	8805									
4	Mining and Quarrying	89	71	111	154	9	166	75	983									
	Sub Total (Primary)	15016	16878	16553	16739	13050	17671	11222	222996									
5	Manufacturing	11617	7502	1908	8487	1464	6164	2077	97286									
5.1	Registered	8121	3393	778	3854	265	3139	710	56355									
5.2	Un-registered	3496	4109	1130	4633	1199	3025	1367	40931									
6	Electricity, Gas and Water supply	768	549	378	640	78	333	150	8500									
6.1	Electricity	578	416	208	441	42	187	84	6237									
6.2	Gas	135	113	133	125	31	107	49	1413									
6.3	Water supply	55	20	37	74	5	39	17	850									
7	Construction	6267	3677	3479	5769	452	4338	1923	56562									
	Sub Total (Secondary)	18652	11728	5765	14896	1994	10835	4150	162348									
8	Transport, Storage and Communication	6554	3571	4651	4407	861	3647	1589	59880									
8.1	Railways	90	189	130	113	0	110	113	1266									
8.2	Transport by other means and storage	5234	2562	3912	3441	717	2828	1154	47535									
8.3	Communication	1230	820	609	853	144	709	322	11079									
9	Trade, Hotel & Restaurants	9575	7457	7495	10643	1477	8154	3687	92872									
10	Banking and Insurance	6382	3805	2884	4111	798	3375	1534	61364									
11	Real Estate & Ownership of Dwellings	20	20	8	13	2	12	4	183									
12	Public Administration	3021	2565	2110	3059	455	2519	568	38925									
13	Other services	4699	3108	3518	3930	605	3348	1507	43380									
	Sub Total (Tertiary)	30251	20526	20666	26163	4198	21055	8889	296604									
	Net State Domestic Product	63919	49132	42984	57799	19242	49561	24261	681948									
	Population ('000)	2917	2539	3298	2790	717	2398	1141	30997									
	Per Capita Income (Rs)	2191	1935	1303	2072	2684	2067	2126	2200									

TABLE - XXIX

COMPARISON BETWEEN STATE AND DISTRICT PER CAPITA INCOME OF KERALA - 1980-81 TO 1995-96
(at Current Prices)

(Rs.)

State/ Dist:	80-81	81-82	82-83	83-84	84-85	85-86	86-87	87-88	88-89	89-90	90-91	91-92	92-93	93-94	94-95	95-96
TMMP	1484	1566	1729	2084	2304	2389	2700	2934	3228	3878	4220	4925	5708	6556	7501	8853
KLM	1536	1534	1821	1999	2136	2441	2701	2924	3272	3665	4350	4889	5740	6430	7480	8765
PTA	-	-	-	1898	2178	2564	2980	3104	3374	3768	4408	5056	5590	6444	7946	9432
ALP	1311	1441	1629	1953	2191	2366	2685	2911	3229	3507	4268	4865	5255	5736	6818	7789
KTM	1452	1613	1912	2187	2265	2507	2875	3137	3423	3634	4038	4945	5473	6155	7544	9506
IDK	1995	2229	2393	2927	3004	3376	3314	4064	4483	5472	4672	6073	6433	8049	9805	11740
EKM	2017	2218	2513	2824	3202	3441	3793	4323	4843	5337	6502	8010	8857	10151	11497	13812
TSR	1462	1558	1806	2067	2161	2333	2620	2958	3240	3671	4422	5277	5921	6576	7586	8857
PKD	1307	1449	1620	1822	1950	2013	2364	2351	2549	3229	3682	4922	5376	5600	6786	7898
MLPM	1045	1032	1162	1319	1504	1383	1599	1707	1851	2394	2592	3275	3619	4056	4416	5472
KKD	1588	1539	1915	2358	2494	2342	2549	2903	3194	3712	3949	4837	5936	6367	7162	8658
WYD	-	2083	1925	1975	2657	2734	3034	3177	3446	3409	4301	4967	5707	8222	11104	11389
KNR	1571	1414	1712	2027	2300	2315	2578	2833	3096	3509	3872	5364	5626	6542	7366	8496
KSGD	-	-	-	-	-	2355	2526	2680	2933	3534	3659	4663	5487	6090	6654	8954
State	1508	1576	1809	2092	2296	2398	2676	2937	3233	3718	4200	5140	5768	6524	7578	9004

(62)

TABLE - XXX

COMPARISON BETWEEN STATE AND DISTRICT PER CAPITA INCOME OF KERALA - 1980-81 TO 1995-96 (AT CONSTANT PRICES)

State/ Dist:	80-81	81-82	82-83	83-84	84-85	85-86	86-87	87-88	88-89	89-90	90-91	91-92	92-93	93-94	94-95	95-96
TVPM	1484	1447	1411	1418	1529	1507	1468	1507	1617	1818	1842	1786	1955	2162	2172	2244
KLM	1536	1413	1478	1352	1395	1538	1455	1472	1616	1666	1866	1734	1874	2009	2047	2101
PTA	-	-	-	1358	1430	1649	1617	1591	1730	1795	1981	1832	1919	2094	2248	2328
ALP	1311	1391	1398	1359	1461	1547	1452	1452	1584	1591	1815	1684	1758	1852	1903	1913
KTM	1452	1476	1559	1420	1451	1614	1599	1657	1805	1763	1824	1772	1897	2025	2171	2354
IDK	1995	2048	1849	1768	1928	2102	1802	1919	2147	2402	2095	2116	2101	2582	2710	2714
EKM	2017	2068	2086	1951	2062	2145	2030	2142	2351	2398	2748	2768	2967	3283	3292	3449
TSR	1462	1480	1510	1432	1386	1506	1431	1497	1620	1656	1895	1889	1996	2138	2162	2191
PKD	1307	1332	1284	1213	1244	1231	1330	1215	1307	1524	1623	1757	1813	1811	1941	1935
MLPM	1045	941	937	885	921	836	864	869	946	1084	1094	1167	1197	1297	1244	1303
KKD	1588	1434	1609	1525	1543	1536	1378	1457	1581	1712	1670	1742	1936	2023	2016	2072
WYD	-	2128	1483	1246	1838	1633	1665	1488	1634	1541	1999	1762	1928	2608	3218	2684
KNR	1571	1303	1422	1362	1421	1437	1360	1412	1539	1595	1665	1930	1890	2106	2125	2067
KSGD	-	-	-	-	-	1302	1386	1417	1551	1615	1559	1652	1803	1946	1905	2126
State	1508	1469	1485	1406	1473	1507	1453	1482	1614	1705	1815	1826	1932	2103	2153	2200

TABLE - XXXI
NET STATE DOMESTIC PRODUCT AT FACTOR COST OF VARIOUS STATES AND
UNION TERRITORIES (AT CONSTANT PRICES)

(Rs.)

Sl. No.	State	1980-81	1988-89	1989-90	1990-91	1991-92
1.	Andhra Pradesh	7324	11028	11442	11621	11920
2.	Arunachal Pradesh	97	188	200	207	217
3.	Assam	2356	3590	3820	3971	4328
4.	Bihar	6360	9500	9401	10205	10008
5.	Goa	316	478	498	510	523
6.	Gujarat	6585	10386	10513	10635	10434
7.	Haryana	3032	5098	5178	5628	5741
8.	Himachal Pradesh	723	970	1086	1091	1083
9.	Jammu and Kashmir	1050	1253	1235	1272	1319
10.	Karnataka	5616	8632	9047	9253	9940
11.	Kerala	3823	4584	4890	5193	5533
12.	Madhya Pradesh	6887	9608	9838	11328	10653
13.	Maharashtra	15113	22170	25562	27108	26117
14.	Manipur	201	295	308	330	364
15.	Meghalayala	180	242	277	295	314
16.	Nagaland	110	207	215	213	221
17.	Orissa	3225	4509	4848	5044	5246
18.	Punjab	4449	6792	7356	7481	7862
19.	Rajasthan	4126	7477	7217	8377	7676
20.	Sikkim	49	115	123	135	-
21.	Tamilnadu	7218	10344	11122	11352	11691
22.	Tripura	268	400	411	444	-
23.	Utter Pradesh	14012	20455	21128	22410	22570
24.	West Bengal	8720	12146	12682	13116	13874
25.	Delhi	2297	3888	4235	4597	-
26.	Pondicherry	186	245	250	263	267
All India		110340	168382	176980	187876	190442

ource : CMIE, September 1994

TABLE - XXXII

**PER CAPITA NET STATE DOMESTIC PRODUCT OF VARIOUS STATES
AND UNION TERRITORIES (AT CONSTANT PRICES)**

		(Rs.)					
Sl. No.	State	1980-81	1985-86	1988-89	1989-90	1990-91	1991-92
1.	Andhra Pradesh	1380	1548	1789	1825	1823	1839
2.	Arunachal Pradesh	1561	2074	2360	2441	2452	2493
3.	Assam	1200	1483	1516	1771	1799	1915
4.	Bihar	919	1066	1156	1119	1189	1142
5.	Goa	3145	3000	3972	4066	4082	4105
6.	Gujarat	1948	2204	2629	2622	2613	2526
7.	Haryana	2370	2852	3247	3234	3449	3456
8.	Himachal Pradesh	1704	1780	1974	2175	2151	2074
9.	Jammu and Kashmir	1776	1832	1729	1662	1669	1687
10.	Karnataka	1528	1659	1987	2045	2055	2171
11.	Kerala	1510	1478	1578	1658	1736	1886
12.	Madhya Pradesh	1333	1404	1538	1538	1729	1588
13.	Maharashtra	2427	2703	3049	3465	3623	3440
14.	Manipur	1429	1623	1723	1761	1850	2002
15.	Meghalaya	1361	1412	1471	1610	1697	1756
16.	Nagaland	1448	1654	1983	1987	1897	1905
17.	Orissa	1231	1390	1493	1579	1615	1652
18.	Punjab	2674	3249	3526	3750	3744	3864
19.	Rajasthan	1222	1338	1783	1678	1898	1717
20.	Sikkim	1571	2017	2924	3118	3369	-
21.	Tamil Nadu	1498	1798	1894	2009	2023	2056
22.	Tripura	1323	1356	1628	1636	1636	-
23.	Utter Pradesh	1278	1376	1551	1568	1628	1606
24.	West Bengal	1611	1710	1922	1971	2004	2084
25.	Delhi	3759	4322	4552	4760	4962	-
26.	Pondicherry	3038	3116	3245	3225	3314	3272
All India		1625	1847	2105	2169	2239	2250

Source : CMIE, September 1994

