



Government of Kerala



***Report On***  
***Annual Survey of Industries- Kerala***  
***2007-08***

---

Department of Economics & Statistics  
Kerala, Thiruvananthapuram-2012  
Website: [www.ecostat.kerala.gov.in](http://www.ecostat.kerala.gov.in), Email: [ecostatdir@gmail.com](mailto:ecostatdir@gmail.com)





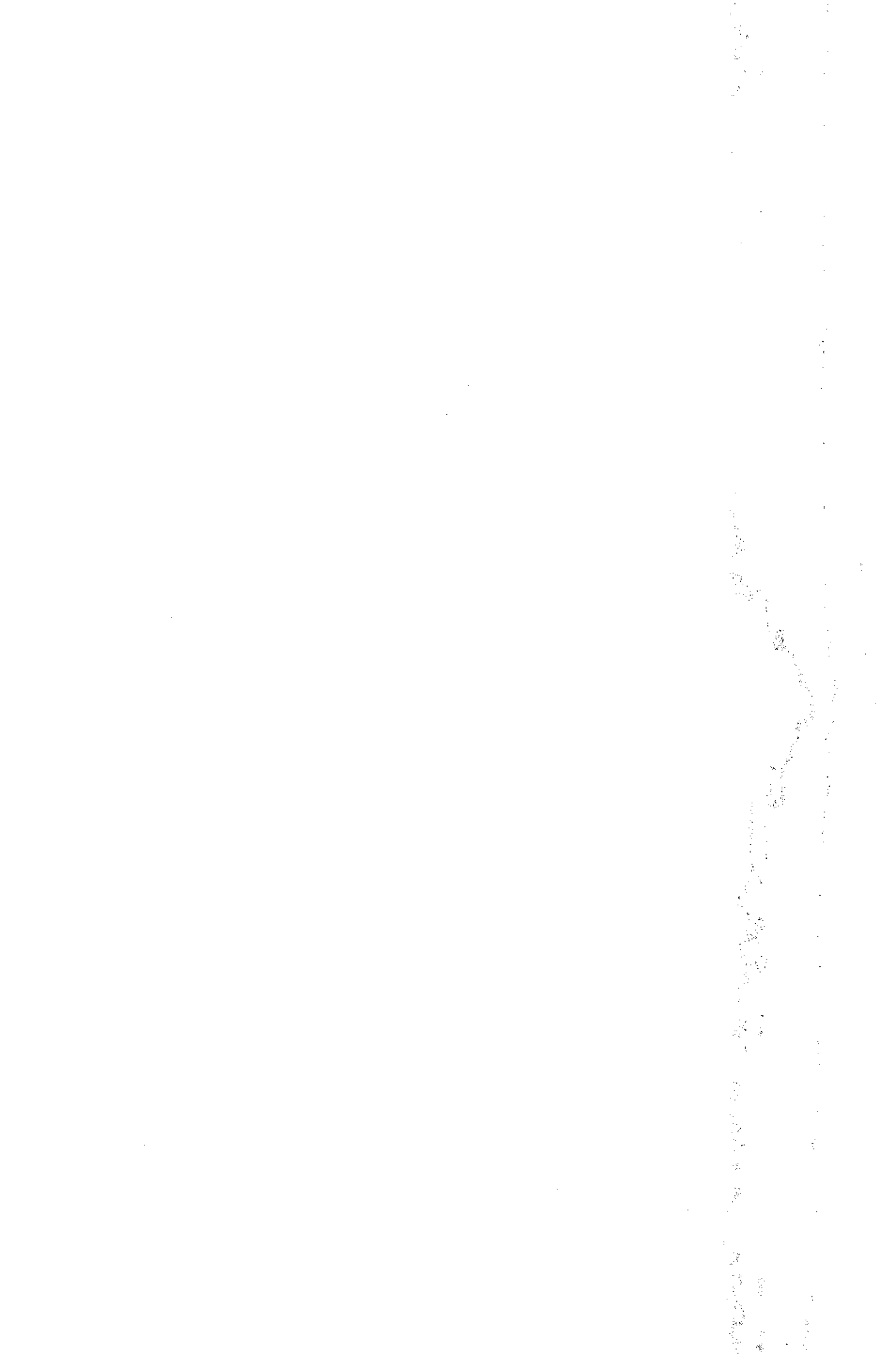
**Government of Kerala**

**Report On Annual Survey of Industries-Kerala  
2007-08**

---

**Department of Economics & Statistics, Kerala  
Kerala, Thiruvananthapuram-2012**

***Website: [www.ecostat.kerala.gov.in](http://www.ecostat.kerala.gov.in), Email: [ecostatdir@gmail.com](mailto:ecostatdir@gmail.com)***



## Preface

*The Annual Survey of Industries (ASI), being the prime source of Industrial Statistics in the Indian Economy provides information on various aspects of the original industrial sector prevailing in India separately by the States a specified region. The present volume is based on the results of ASI 2007-08 Kerala received from the Central Statistics Office (CSO) (IS Wing), Kolkotta and their findings. The information would be useful in the context of Planning, which usually aims at removing Regional imbalances and also for identifying the proper areas where investments could be effective and meaningful.*

*The Annual Survey of Industries provides the basic statistics of Industrial Sector. It provides information to assess, evaluate, composition and structure of organised manufacturing process and repair services. The survey is conducted annually under the statutory provisions of the Collection of Statistical Act 1953 and the Rules framed there under in 1959. National Sample Survey Organization (NSSO), Field Operations Division (FOD) is conducting the survey at National Level.*

*The ASI Division of the Directorate of Economics and Statistics under the leadership of Smt. K. Sathyabhama, Additional Director prepared this book. I hope that this publication will be useful as a reference book. Constructive suggestions to improve this publication are always welcome.*

**V.Ramachandran**

*Director*

Thiruvananthapuram,

Dated: --/07/2011

## Contents

		Pages
Chapter 1	Scope and Coverage	1
Chapter 2	Concepts and Definitions	8
Chapter 3	Principal Characteristics of Industrial sector	14
Chapter 4	Principal Characteristics by Major Economic Activity	18
Annexure-I	National Industrial Classification	30
Annexure-II	Tables-ASI DATA -KERALA	34
Table 1	Capital Employed, Input, Output and GVA at Industry (NIC 04-2 Digit) by State	35
Table 2	Employment and Emoluments at Industry (NIC-04-2 Digit) by State	39
Table 3	Capital Employed, Input, Output and GVA at Industry (NIC 04-3 Digit) by State	43
Table 4	Employment and Emoluments at Industry (NIC-04-3 Digit) by State	51
Annexure-III	Tables-ASI DATA – ALL INDIA LEVEL	59
Table 5	Capital Employed, Input, Output and GVA at Industry (NIC 04-2 Digit) by State	60
Table 6	Employment and Emoluments at Industry (NIC-04-2 digit) by State	65
Table 7	Capital Employed, Input, Output and GVA at Industry (NIC 04-3 Digit) by State	70
Table 8	Employment and Emoluments at Industry (NIC-04-3 Digit) by State	81
Table 9	Annual Series For Principal Characteristics of all Industries	91
Table 10	Principal Characteristics By Major States in ASI 2007-08(Arranged in Descending Order of Net Value Added)	97
Table 11	Principal Characteristics by Rural - Urban Break-up in ASI 2007-08	100
Table 12	Principal Characteristics by Type of Organisation in ASI 2007-08	101

## CHAPTER - 1

### Scope and Coverage

#### **1. Introduction:**

The Annual Survey of Industries, the principal source of Industrial Statistics in India provides statistical information to assess and evaluate, objectively and realistically, the changes in the growth, composition and structure of organized manufacturing sector comprising activities related to manufacturing process, repair services, gas and water supply and cold storage. The survey is conducted annually under the Statutory Provisions of the Collection of Statistics Act, 1953 and the Rules framed there under in 1959 except in the State of Jammu and Kashmir where it is conducted under the Jammu and Kashmir Collection of Statistics Act, 1961 and Rules framed there under in 1964.

#### **2. Historical Background:**

Understanding the importance of collection and compilation of data relating to industrial sector of the country, the Government of India after 1930, launched a voluntary scheme for all collection of detailed data from important industries in India. The Census Manufacturing Industries (CMI) conducted under the Industrial Statistics Act, 1942 and Rules framed there under. While the responsibility for collection of the returns and their verification rested with the Statistics Authorities in the States, the Directorate of Industrial Statistics at the Centre was in charge of co-ordination, technical guidance and publication of results.

The CMI was conducted for the accounting years (calendar years). With the implementation of the Factories Act, 1948 the scope of CMI was extended. The frame for the census was the list of factories classified according to the industries maintained by the Chief Inspector of Factories. The criterion of classification of factory was the value of its principal products.

A closely related survey called the Sample Survey of Manufacturing Industries (SSMI) was also conducted according to the need arose from the urgent requirements of the National Income Committee for Statistics relating to the manufacturing industries for the estimation of the contribution from industries to the national income. With the implementation of the Factories Act, 1948 the SSMI covered the factories registered under Section 2m (i) and 2 m (ii).

After independence, Central Statistical Organization (CSO) was set up under the Cabinet Secretariat by the Government of India in 1951 as an apex statistical body for co-ordinating the large variety of data collected by various agencies, which was necessitated for adoption of planned economy by the Government. In 1956, the Industrial Statistics Act, 1942 was repealed with the passing of a more

comprehensive collection of Statistics Act, 1953. Subsequently Directorate of Industrial Statistics was transferred to the Cabinet Secretariat in 1959 and was attached to Central Statistical Organization as Industrial Statistics Wing.

### **3. Census of Manufacturing Industries (CMI):**

The Directorate of Industrial Statistics launched the Census Manufacturing Industries (CMI) in 1946 with the objective of studying the structure of the Indian industry and estimating its contribution to national income. Because of practical difficulties, the CMI could cover only 29 of the 63 industry groups specified in the Industrial Statistics Act and extended only to 11 States of the Indian Union. It was conducted annually up to the year 1958. Afterwards, the geographical coverage of the CMI extended to 13 States and 2 Union Territories.

### **4. Sample Survey of Manufacturing Industries (SSMI) :**

Following the recommendations of the National Income Committee (1949), the Directorate of Industrial Statistics conducted the first SSMI in 1949 for collecting data from factories falling under the 34 industry groups left out by the CMI and defined under the Factories Act 1934. The technical work including the survey design, sample selection and preparation of schedules was undertaken by the Directorate of Industrial Statistics while the tabulation and analysis of data, report writing etc. was carried out by the Indian Statistical Institute, Calcutta. The SSMI was conducted annually up to the year 1958 by the then Directorate of National Sample Survey (now the NSS Organization). The sampling design adopted envisaged classification of establishments in each of the industries into groups according to the number of workers employed. For industries with marked concentration in particular areas, a further grouping according to States was also done.

ASI refers to the factories defined in accordance with the Indian Factories Act, 1948 and thus has coverage wider than that of the CMI and the SSMI put together and substituted both the CMI and the Sample Survey of Manufacturing Industries (SSMI). The ASI in its present form started in 1960 with 1959 as the reference year and is continuing since then except for the ASI 1972. The Directorate of Industrial Statistics was transferred to CSO in 1957 and renamed as CSO (IS Wing). ASI has replaced both the CMI and SSMI.

### **5. Annual Survey of Industries:**

The Annual Survey of Industries (ASI) is a Statutory Survey conducted under the provisions of the Collection of Statistics Act, 1953 and Rules framed there under in 1959. Deputy Director General (FOD) functions as the Statistics Authority under the Act for the conduct of the ASI. ASI is a record based inquiry. This scheme covers the units registered under the following Acts.



- a) Factories registered under Section 2 m (i) and 2 m (ii) of the Indian Factories Act, 1948 ie. Those factories employing 10 or more workers with power and those employing 20 or more workers and without power respectively.

And

- b) Bidi and Cigar Establishments registered under Bidi and Cigar Workers (condition of employment) Act, 1966.

The survey covers entire country except States /Union Territories of Arunachal Pradesh, Mizoram, Sikkim, and Lakshadweep.

The ASI data are collected in 2 parts namely, Part I relating to Capital, Employment, and Emoluments, Consumption of Fuels, Lubricants and Raw Materials, other Inputs /Outputs, Value Added for use of Central Statistical Organisation and other agencies while Part II relates to Labour turnover, Absenteeism, Labour Cost etc. for use of Labour Bureau. In addition, information on certain key items are collected through a SHORT Schedules on a priority basis for quick tabulation from 1999-2000 onwards. The ASI refers to the factories defined in accordance with the Factories Act, 1948 and thus has coverage wider than that of the CMI and SSMI put together.

#### **6. Scope and Coverage:**

The Annual Survey of Industries covers the entire factory sector comprising factories registered under section 2 m (i) and 2 m (ii) of the Factories Act, 1948. The coverage of the factory sector extends not only to manufacturing units but also to others, categorized under services such as those engaged in water supply, sanitary services, motion picture production, laundering, job-dyeing and electricity undertaking. However from 1998-99 onwards all electricity undertaking engaged in generation, transmission and distribution of electricity registered with Central Electricity Authority (CEA) are being excluded. Similarly, Defence installations, technical training institutes, establishments engaged in hotel and café services, and Storage and distribution of oil are not covered. However, the Bidi and Cigar units covered under Bidi and Cigar Workers (condition of employment) Act, 1966 are surveyed under ASI. Geographically the survey covers the entire country, except States/Union Territories of Arunachal Pradesh, Mizoram, Sikkim, and Lakshadweep. From 1998-99 onwards the departmental units such as Railway workshops, RTC workshops, Government mints, Sanitary, water supply, gas storage etc. are not covered, as there are alternative sources of their data compilation for the GDP estimates by the National Accounts Division of CSO.

### **7. ASI Frame and its updation:**

The ASI frame is based on the lists of registered factories /units maintained by the Chief Inspector of Factories (CIF) in each State and those maintained by licensing authorities in respect of Beedi and Cigar Establishments and electricity undertakings. Availability of a complete and up-to-date frame listing all the eligible units is an essential prerequisite for any large-scale survey. In fact, availability of proper frame is one of the most critical requirements for working out correct multiplier to arrive at proper estimate. Regional offices of FOD (NSSO) maintain close liaison with Chief Inspector of Factories in updating the frame every year. ASI frame should be complete and error free. The updated list of Registered Factories should be forwarded to CSO on quarterly basis regularly.

### **8. Sampling Design:**

The Sampling Design adopted for ASI has undergone considerable changes from time to time taking into account technical and other requirements. The Technical Group on Revision of Sampling Design of ASI recommended a revised Sampling Design in 1997-98. The salient features of stratification of the population for selection of units are (i) Census Sector and (ii) Sample Sector.

### **9. Census Sector:**

1. For industrially less developed States/Uts:
  - a. All industrial units of less industrially developed 12 States/Uts and
2. For States /UTS other than those industrially less developed States /Uts,
  - b. Industrial units having 200 or more workers
3. & c .All electricity undertakings and PSUs (Public Sector Undertaking) not covered as above
  - ie. Industrial units not having 200 or more workers.

Further the sector includes industrial units having significant input / output/GVA/NVA which would jointly contribute to industrial units having 200 or more workers and electricity undertakings and PSUs not covered under industrial units not having 200 or more workers, not less than 90% of NVA within a State. All units with 50 or more workers operating with power and units having 100 or more workers operating without power were covered under Census Sector.

### **10. Sample sector**

All industrial units of the entire ASI frame minus the industrial units of the Census Sector formed the Sample Sector. State X industry constitutes the stratum in the Sample Sector. The sample size is first decided for each industry group at all India level and sample size for each industry within each State (stratum) is allocated in proportion to sampling variation measured in terms of RSE (Relative Standard Error) but not the number of factories. CSO (IS Wing) is responsible for selection of units in accordance with sampling design recommended by expert committee from time to time. Generally there is a certain minimum coverage in the stratum and appropriate adjustment may be made by amalgamating industries of similar nature, wherever necessary, using a circular systematic sampling technique.

Sample Sector comprised of 50 / 100 workers operating with or without power in the major states was covered fully. In 1997-98 a consensus decision has been taken so as not to attempt for the district level estimates. This design has been more or less continued in 2003-04 with the modification that the Census Sector was defined to include units having 100 or more workers, instead of 200 or more workers and only 5 industrially backward States /Uts namely Manipur, Meghalaya, Nagaland, Tripura and Andaman Nicobar Islands were covered in the Census Sector. The Public Sector Undertakings were also covered in the general scheme i.e., units having 100 or more workers in Census Sector and rest in Sample Sector.

The entire sample was selected in the form of two independent sub-sample using Circular Systematic Sampling Method. Sub-samples were one or more same units were selected in both the sub-samples were discarded and fresh sub-samples were drawn.

### **11. Industrial Classification:**

A standard Industrial Classification is essential for developing a proper database in any country. Such classifications are frequently used in classifying the economically active population, statistics of industrial production and distribution, the different fields of labour statistics and other economic data such as national income. Comparability of statistics available from various sources, on different aspects of the economy, and usability of such data for economic analysis are prerequisites for standardization of a system of classification. The classification of economic activity is under 3 broad categories namely,

- 1) Primary Production (Agriculture and Mining)
- 2) Secondary Production (Manufacturing and Construction)
- 3) Services (Transport, Commerce, and Administration etc.)

The Central Statistical Organisation (CSO) which is responsible for co-ordination of statistical activities in the country as well as for evolving and maintaining statistical standards took up the task of evolving a standard industrial classification as early as in 1960 and evolved a Standard Industrial Classification (SIC) in 1962. Considering the significant changes in the organisation and structure of the industries the necessity to revise the industrial classification has been felt from time to time and the SIC 1962 revised in the years 1970, 1987, and 1998. The latest classification, i.e., NIC 1998 developed on the basis of UNISIC 1990(Rev.3) has been adopted from ASI 1998-99.

### **12. Reference Period and Schedule of Enquiry:**

In the beginning the Reference Period for the ASI was the Calendar Year for all items except fixed assets and working capital for which it was the accounting year. After a careful study of the relevant issues the reference year was changed to the financial year for all the items with effect from ASI 1988-89 and for ASI Part II data it continues to be calendar year. Reference Period for ASI 2007-08 is the accounting year of the factory ending on any day during the fiscal year 2007-08. Thus ASI 2007-08 data collected from the respective establishment relate to their accounting year ended on any day between 1<sup>st</sup> April 2007 and 31<sup>st</sup> March 2008. Survey conducted in the year 2008-09.

The schedule has been designed to meet substantially the national and international requirements for industrial data. ASI schedule is the basic tool to collect desired data. A comprehensive schedule has been devised to collect ASI data. ASI schedule consists of different parts. In the initial rounds the schedule-sought particulars relating to manufacturing activity only. Over the years, additions were made to meet the specific data requirements of various organizations. By the year 1973-74 the schedule consisted of 5 parts:

1. Part I on Manufacturing
2. Part II on Labour Turn over
3. Part III on Stocks and Consumption of components and accessories in small-scale sector.
4. Part IV on Construction expenditure and
5. Part V on Indirect Taxes, Sales subsidies and capacity of power equipment installed.

It was felt that ASI schedule had become too lengthy and complicated. So modifications made in the schedule consisting of 3 parts namely, Part I covering data on Manufacturing activities, Part II covering Labour and Part III covering Construction which was adopted in 1974-75. Part III was canvassed until ASI 1997-98 after which it was dropped for want of finalizations of the exact data requirements by NBO (National Buildings Organisation). Thus from ASI 1998-99 onwards only Part I and Part II are being canvassed in addition to a "Short Schedule" which has been introduced from ASI 1999-2000 with a view to collect data on certain key parameters, mainly for the purpose of preparing

quick GDP estimates. In a view of the urgent requirement of such data, it was decided to accept the provisional data wherever actual audited data was not available. Appropriate action is taken before each ASI round, to implement necessary revisions and modifications in response to specific data demands.

### **13. Unit of Enumeration:**

The Primary Unit of Enumeration in the survey is a Factory in the case of manufacturing industries, a Workshop in the case of repair services, an undertaking or a licensee in the case of electricity, gas and water supply undertakings, an establishment in the case of Bidi and Cigar industries. The owner of two or more establishments located in the same region and pertaining in the same industry group and belonging to the same scheme (Census or Sample) was however, permitted to furnish a single consolidated return called "Joint Return". Wherever different parts of single integration unit of production are registered as different factories the owner is permitted to submit a single return for the whole unit provided the constituent factories are located in the same State.

### **14. Form of Returns**

The returns are submitted in the prescribed form for the purpose of ASI under the collection of Statistics (Central) rules 1959. As the data relating to a single factory cannot be published in a view of restrictive class in the Act, safeguarding the interest of the owners, the industries in such case had been combined and data published for a group of industries.

State Government participates in the survey programme in a scale to commensurate with their requirements. Our department has started collection of data under this scheme with effect from 2000 onwards. The State Level Co-ordination Committee (SLCC) is the nodal agency, co-coordinating the fieldwork of ASI in the State. Principal Secretary to Government, Industries Department is the Chairman of the SLCC

### **15. Limitations:**

As the data relating to less than 3 units in an industry group cannot be published, the data in respect of such industrial units are combined with the nearest sub-group of group keeping the nearness in the line of production as far as possible. Also as the figures were rounded up to the nearest integer at various levels of aggregates during the course of tabulation, there might be slight variation in the total presented at higher level of aggregation and the sums of corresponding constituents showing different tables.

## **CHAPTER 2**

### **CONCEPTS AND DEFINITIONS**

#### **1. Reference Year:**

Reference year for ASI 2007-08 is the accounting year of the factory ending on 31<sup>st</sup> March 2008 while the survey was conducted in 2008-2009.

#### **2. Factory:**

Factory is one, which is registered under 2m(i) and 2 m (ii) of the Factories Act, 1948.

The Sections 2m(i) and 2 m (ii) refer to any premises including the precinct thereof: (a) Whereon 10 or workers are working or were working on any day of the preceding 12 months, and in any part of which a manufacturing process is being carried on with the aid of power, or is ordinarily so carried on or (b) Whereon

20 or more workers are working or were working on any day of the preceding 12 months and in any part of which a manufacturing process is being carried on without the aid of power or is ordinarily so carried on.

#### **3. Fixed Capital:**

Fixed capital represents the depreciated value of fixed assets owned by the factory as on the closing day of the accounting year. Fixed assets are those that have a normal productive life of more than one year. Fixed capital includes land including lease hold land, buildings, plant and machinery, furniture and fixtures, transport equipment, water system and roadways and other fixed assets such as hospitals, schools etc. used for the benefit of factory personnel

#### **4. Physical Working Capital:**

Physical working capital is the total inventories comprising of raw materials and components, fuels, and lubricants, spares, stores, and others, semi finished goods and finished goods as on the closing day of the accounting year. However, it does not include the stock of the materials, fuels, stores etc. Supplied by others, to the factory for processing and finished goods processed by the factory from raw materials supplied by others.

**5. Working Capital:**

Working capital is the sum total of Physical Working Capital as already defined above and the cash deposits in hand and at bank and the net balance receivable over amounts payable at the end of the accounting year. Working capital, however, excludes unused overdraft facility, fixed deposits irrespective of duration, advances for acquisition of fixed assets, loans and advances by proprietors and partners irrespective of their purpose and duration, long term loans including interest thereon and investments.

**6. Productive Capital**

Productive Capital is the total of fixed capital and Working capital as defined above.

**7. Invested Capital:**

Invested Capital is the total of fixed capital and Physical working capital as defined above.

**8. Gross value of Plant and Machinery:**

Gross value of Plant and Machinery represents the total original (un depreciated) value of installed plant and machinery at the end of the accounting year. It includes the book value of the newly installed plants and machinery and the approximate value of rented in plant and machinery at the time of ending in but exclude the value of rented out plants and machinery. Total value of all the plants and machinery acquired on hire-purchase basis is also included.

**9. Outstanding Loans:**

Outstanding loans represents all loans whether short term or long term, whether interest bearing or not, outstanding according to the books of the factory as on the closing day of the accounting year.

**10. Rent Paid:**

Rent paid represents the amount of royalty paid in the nature of rent for the use of the fixed assets in the factory.

**11. Interest paid:**

Interest paid includes all interest paid on factory account on loans, whether short term or long term, irrespective of the duration and the nature of agency from which the loan was taken. Interest paid to partners and proprietors on capital or loan are excluded.

**12. Rent Received:**

Rent received represents the amount of royalty received in the nature of rent for the use of the fixed assets in the factory.

**13. Interest Received:**

Interest received includes all interest paid on factory account on loans, whether short term or long term, irrespective of the duration and the nature of agency from which the loan was taken. Interest paid to partners and proprietors on capital or loan are excluded.

**14. Workers:**

Workers are defined to include all persons employed directly or through any agency whether for wages or not and engaged in any manufacturing process or in cleaning any part of the machinery or premises used for manufacturing process or in any other kind of work incidental to or connected with the manufacturing process or the subject of the manufacturing process. Labour engaged in the repair and maintenance or production of fixed assets for factory's own use or labour employed for generating electricity or producing coal, gas etc. are included.

**15. Employees:**

Employees include all workers defined above and persons receiving wages and holding supervisory or managerial positions engaged in administrative office, store keeping section and welfare section, sales department as also those engaged in purchase of raw materials etc. or purchase of fixed assets for the factory and watch and ward staff.

**16. Total Persons Engaged:**

Total Persons engaged includes the employees as defined above and all working proprietors and their family members who are actively engaged in the work of the factory even without any pay and the



unpaid members of the co-operative societies who worked in or for the factory in any direct or productive capacity. The number of workers or employees is an average number obtained by dividing man-days worked by the number of days the factory had worked during the reference year.

#### **17. Man days:**

Man-days represent the total number of days worked and the number of days paid for during the accounting year. It is obtained by summing up the number of persons of specified categories attending in each shift over all the shifts worked on all days.

#### **18. Wages and Salaries:**

Wages and Salaries are defined to include all remuneration in monetary terms and also payable more or less regularly in each pay period to workers as compensation for work done during the accounting year. It includes:

- a) Direct wages and salaries (ie. basic wages/salaries, payment of overtime, dearness, compensatory, house rent and other allowances)
- b) Remuneration for the period not worked (ie. basic wages/salaries and allowances payable for leave period, paid holiday, lay-off, payments and compensation for unemployment, if not paid from sources other than employers)
- c) Bonus and ex-gratia payment paid both at regular and less frequent intervals (ie., incentive bonuses, productive bonuses, profit sharing bonuses, festival or year-end bonuses etc.)

It excludes lay off payments that are made from trust

or other special funds set up exclusively for this purpose, ie. Payments not made by the employer. It also excludes imputed value of benefits in kind, employer's contribution to old age benefits and other social security charges, direct expenditure on maturity benefits, crèches and other group benefits, traveling and other expenditure incurred for business purposes and reimbursed by the employer are excluded. The wages are expressed in terms of gross value ie, before deduction for fines, damages, taxes, provident fund, employee's state insurance contribution etc.

#### **19. Contribution to Provident fund and other funds:**

This includes old age benefits like provident fund, pension, gratuity, etc. and employer's contribution towards other social security charges such as employee's state insurance, compensation for work injuries and occupational diseases, provident fund linked insurance, retrenchments and lay off benefits.

**20. Workmen and staff welfare expenses:**

This includes group benefits like direct expenditure on maturity, crèches, canteen facilities, educational, cultural, recreational facilities and grants to trade unions, co-operative stores etc. meant for employees.

**21. Total Emoluments:**

'Total emoluments' is defined as the sum of wages and salaries, employer's contribution as provident fund and other funds and workmen and staff welfare expenses as defined above.

**22. Fuels Consumed:**

Fuels consumed represents total purchase value of all items of fuels such as coal liquefied petroleum gas, petrol, diesel, electricity lubricants, water etc. Consumed by the factory during the accounting year but excluding the items, which directly enter into the manufacturing process.

**23. Materials consumed:**

Materials consumed represents the total delivered value of all items of raw materials, components, chemicals, packing materials, and stores which actually enter into the production process of the factory during the accounting year. It also includes the cost of all materials used for the construction of building etc. for the factory's own use. It however, excludes all intermediate products consumed during the accounting year. Intermediate products are those products, which are produced by the factory but are subject to further manufacturing.

**24. Ex-Factory value:**

Ex-factory value of all products and by-products manufactured is attained at the rate of net sale value (inclusive of subsidies etc.) with respect to each of the items.

**25. Total Input:**

Total input comprises of total value of fuels, materials consumed as well as expenditures such as cost of contract and commission work done by others on materials supplied by the factory, cost of materials consumed for repair and maintenances work done by others to the factory 's fixed assets, inward freight and transport charges, rates and taxes, (excluding income tax) postage, telephone and telex expenses, insurance charges, banking charges, cost of printing and stationery and purchase value of goods sold in the same condition as purchased. Rent paid and interest paid is not included.

**26. Total Output:**

Total output comprises of total ex-factory value of products and by-products manufactured as well as other receipts from non-industrial services rendered to others, work done for others on materials supplied by them, value of electricity produced and sold, sale value of goods sold in the same conditions purchased, addition in stock of semi-finished goods and value of own construction. Rent received and interest received is not being included from ASI 2001-'02.

**27. Depreciation:**

Depreciation is consumption of fixed capital due to wear and tear and obsolescence during the accounting year and is taken as provided by the factory owner or is estimated on the basis of cost of installation and working life of fixed assets.

**28. Net Value Added:**

Net value added is arrived by deducting total input and depreciation from total output.

**29. Components and Accessories Consumed:**

Components and accessories consumed are the portion of materials consumed and shown separately to represent as a special type of consumption.

**30. Imported Materials Consumed on Actual Use**

This comprises of the portion of materials consumed that are imported from other countries. It may be raw materials or fuels or components and accessories of the input basket.

**31. Semi--finished goods**

Finished goods refer to the imputed value of all materials which have been partially processed by the factory but which are not usually sold without further processing. It includes the work in progress for materials supplied by others, but excludes the value of semi-finished fixed assets produced for factory's own use,

**32. Finished Goods:**

Finished goods of the factory are the ultimate products ready for sale. It does not require further processing but needs packaging and labeling etc.

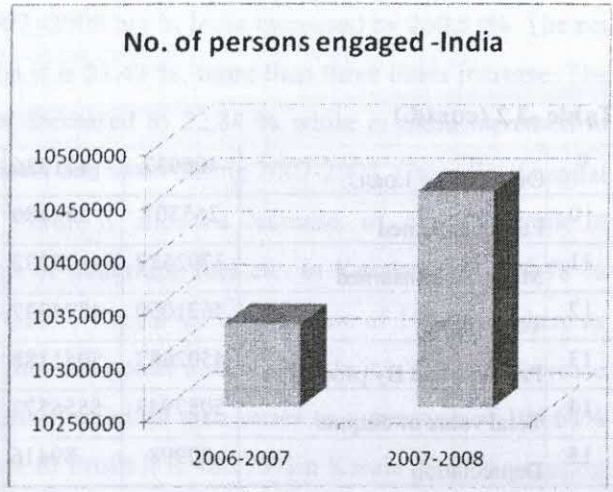
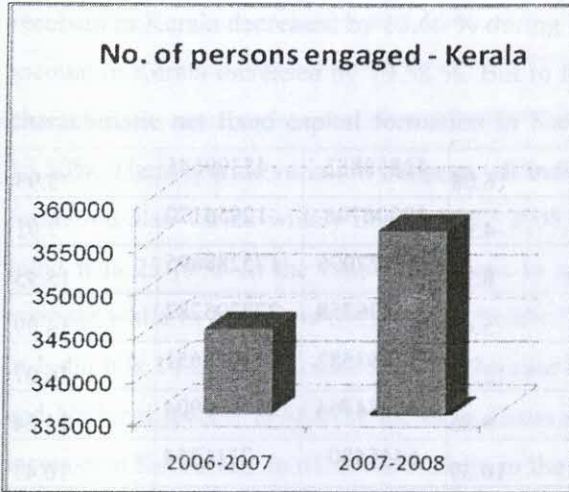
**CHAPTER-3**  
**PRINCIPAL CHARACTERISTICS OF INDUSTRIAL SECTOR**

Table -3.1

**Principal Characteristics of Industrial Sector during 2006-2007 and 2007-2008**  
**Kerala and All India-Relating to Workers**

Sl. No	Characteristics	Kerala			India		
		2006-2007	2007-2008	% of variation	2006-2007	2007-2008	% of variation
A	No. of persons engaged	344845	356147	3.28	10328434	10452535	1.20
1	Workers	297533	308641	3.73	7880536	8198110	4.03
1.1	Directly Employed	254525	268486	5.49	5516703	5659750	2.59
	Men	87063	91915	5.57	4376728	4539837	3.73
	Women	167462	176571	5.44	1139722	1119777	-1.75
	Children	0	0	0.00	253	136	-46.25
1.2	Employed through Contractors	43008	40155	-6.63	2363832	2538360	7.38
2	Employees other than workers	44954	45707	1.70	2371613	2180385	-8.06
0	Supervisory and Managerial	21190	24547	15.84	935255	978139	4.59
	Other employees	23764	21160	-10.96	1436358	1202246	-16.30
3	Unpaid family members /Proprietors etc.	2359	1800	-23.70	76286	74040	-2.94
B	Total mandays employed (in ' 000 s)	84914	91292	7.51	3034322	3144881	3.64
C	Wages and salaries including Employer's contribution (in Lakhs)	246180	273127	10.95	10658504	12502430	17.30
1	Wages and salaries including bonus (in Lakhs)	202789	227329	12.10	8875099	10544284	18.81
1.1	Wages and salary	186998	209002	11.77	8417994	9984395	18.61
1.1.1	Workers (wages to workers)	123355	133235	8.01	4429135	5103023	15.21
1.1.2	Supervisory and Managerial	39930	50239	25.82	2693550	3375002	25.30
1.1.3	Other employees	23713	25528	7.65	1295309	1506370	16.29
1.2	Bonus to all staff	15791	18327	16.06	457105	559890	22.49
2	Employer's contribution	43391	45798	5.55	1783405	1958146	9.80

In the above table the item 'persons employed through contractors' shows a decrease of 6 % during 2007 -2008 in Kerala where as in India it is increase of 7 %. Wages and salaries in Kerala increased by 11.77 % But in national level it is 18.61 %..The difference between Kerala and India is 7 %. Bonus to staff increased by 16 % in Kerala while in India it is 22 %



Under the heading 'directly employed', child labour is there in India. During 2006-2007 it is 253 and during 2007-2008 it is 136. This shows a percentage of variation around (-) 46.25 %. But in Kerala there is no child laborers reported during this period. Total man days employed shows a variation of increase around 7.51% in state level.

Table -3.2

**Principal Characteristics Of Industrial Sector During 2006-2007 and 2007-2008  
Kerala and All India**

SI No	Characteristics	Kerala			India		
		2006-2007	2007-2008	%of variation	2006-2007	2007-2008	%of variation
1	Total No of workers	297533	308641	3.73	7880536	8198110	4.03
2	No of persons engaged	344845	356147	3.28	10328434	10452535	1.20
3	Wages to workers	123355	133235	8.01	4429135	5103023	15.21
4	Total emoluments	202789	227329	12.10	8875099	10544284	18.81
5	No of factories	5554	5584	0.54	144710	146385	1.16
6	Fixed capital	855082	914336	6.93	71513139	84513209	18.18
7	Working capital	286926	418223	45.76	28218880	31695306	12.32
8	Invested capital	1485641	1707590	14.94	107150382	128012553	19.46

Table -3.2 (contd.)

9	Outstanding Loans	406037	471336	16.08	42858882	45399645	5.93
10	Fuels consumed	265307	252186	-4.95	12006706	12956170	7.91
11	Materials consumed	3792677	4125232	8.77	151177096	175288695	15.95
12	Total inputs	4621050	4874337	5.48	194836758	222295282	14.09
13	Products and By products	4502687	5051188	12.18	212863582	247071651	16.07
14	Total value of outputs	5057943	5556577	9.86	240854764	277570904	15.24
15	Depreciation	80998	89416	10.39	6445480	7116354	10.41
16	Net value added	355895	592824	66.57	39572526	48159268	21.70
17	Rent paid	6866	8390	22.20	640399	750549	17.20
18	Interest paid	61352	67818	10.54	4131128	5148688	24.63
19	Rent received	3960	3419	-13.66	154569	557242	260.51
20	Interest Received	2646	4366	65.00	406744	493411	21.31
21	Net income	287677	516616	79.58	34800999	42260031	21.43
22	Net fixed capital formation	78353	60455	-22.84	7987020	10662743	33.50
23	Gross fixed capital formation	159351	149872	-5.95	14432500	17779098	23.19
24	Addition in stock of :	2357	181045	7581.16	5500457	8450845	53.64
	a. Materials ,fuels etc	-16056	181397	1029.78	2926206	4952720	69.25
	b. Semi finished goods	9788	-4298	-143.91	927755	1060215	14.28
	Finished goods	8625	3946	-54.25	1646496	2437910	48.07
25	Gross capital formation	161708	330916	104.64	19932958	26229942	31.59
26	Profit	41498	243489	486.75	24142496	29757600	23.26
27	Gross value addition to fixed Capital	177937	193030	8.48	18190195	22661180	24.58

Regarding the above table the total number of workers in Kerala in the registered factories during 2007-2008 shows an increase of 3.73 %. At the same time the number of factories shows 0.54% increase during 2007-2008. Further the fixed capital during 2006-2007 increased by 6.93 % only while the working capital increased by 45.76% and invested capital by 14.94 %. The total inputs increased by 5.48 % and total output by 9.86 %. Interest received shows a increase by 65% during 2007-2008. Net value added increased by 66.57% in Kerala but in India During 2007 -2008 increased by 21.70 %.. Rent paid increased by 22.20 %in Kerala but all India level increase is by 17.20 % only. In the case of Rent

received in Kerala decreased by 13.66 % during 2007 -2008 but in India increased by 260.51%. The net income in Kerala increased by 79.58 %. But in India it is 21.43 %, more than three times increase. The characteristic net fixed capital formation in Kerala decreased to 22.84 % while in India increased to 33.50%. There is wide variation between all India level and State during 2007-2008. Gross fixed capital formation also varied widely during 2007-2008. In Kerala it shows a decrease of 5.59 %. While in India it is 23.19%. In the case of addition in stock of materials, fuel etc. in Kerala it is 1029.78 % increase while in India it is 69.25. Semi finished goods in Kerala shows decrease of 143.91% where as in India it is 14.28 % increase. Same is the case of finished goods also. In Kerala it is 54.25% decrease and National level it is 48.07% increase. Gross capital formation also varies to a measure of 104.64% increase in Kerala and to 31.59 % in India in the case of Profit it is 486.75% in Kerala 23.26% variation in National level

Sl. No.	Particulars	2007	2008	% Change
1	Total persons engaged	12481	12481	0.00
2	Wages and salaries	12481	12481	0.00
3	Input	12481	12481	0.00
4	Output	12481	12481	0.00
5	Depreciation	12481	12481	0.00
6	Net value added	12481	12481	0.00
7	Net income	12481	12481	0.00

From the above table it is understood that during the year 2007-2008, the total number of registered factories is 2284 out of which majority from the manufacturing sector. The number of factories registered under the manufacturing sector is 92% while as in other sector is 8%. The manufacturing sector plays a crucial role in the industrial economy. Taking in to consideration the number of factories in operation 92% shows in manufacturing sector and 8% in other sector. Out of 10801 workers employed, 92% of the workers are in the manufacturing sector. This table also gives an idea about the stock of capital, fixed and gross output etc. The total stock of fixed and invested capital in the manufacturing sector is 50% respectively and the total input of manufacturing sector is 50%. The net value added during the year from the manufacturing sector is 92%.

**CHAPTER 4**  
**PRINCIPAL CHARACTERISTICS BY MAJOR ECONOMIC ACTIVITY**

Table -4.1

## Principal Characteristics by Major Economic Activity

SI No	Principal characteristics	Unit	Manufacturing	Others	All
1	Factories	Number	5311	273	5584
		%	95.12	4.88	100
2	No of factories in operation	Number	4930	273	5203
		%	94.76	5.24	100
3	Fixed capital	Rs in Lakhs	874910	39426	914336
		%	95.69	4.31	100
4	Invested capital	Rs in Lakhs	1649298	58292	1707590
		%	96.59	3.41	100
5	Workers	Number	300752	7889	308641
		%	97.45	2.55	100
6	Total persons engaged	Number	345598	10549	356147
		%	97.04	2.96	100
7	Wages to workers	Rs in Lakhs	128492	4743	133235
		%	99.64	.356	100
8	Input	Rs in Lakhs	4670924	203413	4874337
		%	95.83	4.17	100
9	Gross output	Rs in Lakhs	5328915	227662	5556577
		%	95.91	4.09	100
10	Depreciation	Rs in Lakhs	83339	6077	89416
		%	93.21	6.79	100
11	Net value added	Rs in Lakhs	574653	18171	592824
		%	96.94	3.06	100
12	Net income	Rs in Lakhs	502439	14177	516616
		%	97.26	2.74	100

From the above table it is understood that during the year 2007-2008, the total number of registered factories is 5584 out of which majority from the manufacturing sector. The number of factories registered under the manufacturing sector is 95%, where as in other sector it is only 5%. Thus manufacturing sector plays a crucial role in the industrial economy.. Taking in to consideration the number of factories in operation 95% shows in manufacturing sector and 5% in other sector. Out of 308641 workers employed, 97% of the workers are in the manufacturing sector .This table also gives an idea about the stock of capital, input and gross output etc. The total stock of fixed and invested capital in the manufacturing sector is 96% and 97% respectively and the total input of manufacturing sector is 96%. The net value added during the year from the manufacturing sector is 97%.

Table -4.2



Table showing variation of Principal characteristics by major economic activity between 2006-07 and 2007-08.

Sl No	Characteristics	Unit	Manufacturing			Others		
		Numbers	2006-2007	2007-2008	% of Variation	2006-2007	2007-2008	% of Variation
1	2	3	4	5	6	7	8	9
1	No of factories	Numbers	5317	5311	-0.11	237	273	15.19
2	No of factories In operation	Rs in Lakhs	4839	4930	1.88	236	273	15.68
3	Fixed capital	Rs in Lakhs	785362	874910	11.40	69720	39426	-43.45
4	Invested capital	Numbers	1401048	1649298	17.72	84593	58292	-31.09
5	Workers	Numbers	291043	300752	3.34	6490	7889	21.56
6	Total persons Engaged	Rs in Lakhs	334757	345598	3.24	10088	10549	4.57
7	Wages to Workers	Rs in Lakhs	119123	128492	7.86	4232	4743	12.07
8	Total inputs	Rs in Lakhs	4393085	4670924	6.32	227965	203413*	-10.77
9	Gross output	Rs in Lakhs	4796296	5328915	11.10	261647	227662	-12.99
10	Depreciation	Rs in Lakhs	73704	83339	13.07	7294	6077	-16.68
11	Net value added	Rs in Lakhs	329507	574653	74.40	26388	18171	-31.14
12	Net income	Rs in Lakhs	267027	502439	88.16	20650	14177	-31.35

Sl no	Characteristics	Unit	All		
		Numbers	2006-07	2007-08	% of Variation
1	2	3	10	11	12
1	No of factories	Numbers	5554	5584	0.54
2	No of factories in Operation	Rs in Lakhs	5075	5203	2.52
3	Fixed capital	Rs in Lakhs	855082	914336	6.93
4	Invested capital	Numbers	1485641	1707590	14.94
5	Workers	Numbers	297533	308641	3.73
6	Total persons engaged	Rs in Lakhs	344845	356147	3.28
7	Wages to workers	Rs in Lakhs	123355	133235	8.01
8	Total inputs	Rs in Lakhs	4621050	4874337	5.48
9	Gross output	Rs in Lakhs	5057943	5556577	9.86
10	Depreciation	Rs in Lakhs	80998	89416	10.39
11	Net value added	Rs in Lakhs	355895	592824	66.57
12	Net income	Rs in Lakhs	287677	516616	79.58

The above table shows the comparison of principal characteristics of industrial sector during 2006-2007, 2007-08. In the manufacturing sector the number of factories decreased by 0.11% in the

year 2007-2008 but the total number of factories increased by 0.54% only. In the case of other sector, there is a remarkable variation of (-) 31.14% in net value addition and (-) 31.35% in Net income during the year 2007-08. The table overall shows an increasing trend in number of factories, capital investment, total input and output and net income etc.

### Structural Ratios And Technical Co-efficient By Major Economic Activity 2007-2008

Table -4.3

Factory Related

SI No	Item	Unit	Manu- facturing	Others	All
1	Fixed Capital per factory	Rs in Lakhs	177.46	144.41	175.73
2	Gross output per factory	Rs in Lakhs	1080.91	833.92	1067.95
3	Net value added per factory	Rs in Lakhs	116.56	66.56	113.94
4	Workers per factory	Numbers	61	28.89	59.32
5	Persons engaged per factory	Numbers	70.10	38.64	68.45

Table -4.4

Worker related

SI No	Item	Unit	Manu- facturing	Others	All
1	Fixed capital per person engaged	Rs in Lakhs	2.53	3.74	2.57
2	Gross output per person engaged	Rs in Lakhs	15.42	21.58	15.60
3	Net value added per person engaged	Rs in Lakhs	1.66	1.72	1.66
4	Wages per worker	Rs in Lakhs	0.43	0.60	0.43

Table -4.5

Ratio

SI No	Item	Unit	Manu- facturing	Others	All
1	Ratio of fixed capital to net value added	Nil	1.52	2.17	1.54
2	Ratio of Fixed capital to Gross output	Nil	0.16	0.17	0.16
3	Ratio of Net value added to gross output	Nil	0.11	0.08	0.11

The above three table shows the structural ratios and technical co efficient by major economic activities during the year 2007-08. The fixed capital utilised by each factory in the manufacturing sector is Rs 177.46 Lakhs and in other sector it is Rs. 144.41 Lakhs. Gross output per factory shows an

amount of Rs.1080.91 Lakhs in the manufacturing sector while it is Rs833.92Lakhs in the other sector. Thus manufacturing sector has a prime role in the case of gross output per factory. The number of workers and persons engaged per factory is higher in the manufacturing sector, than in other sector. In the case of net value added per factory in the manufacturing sector is Rs 116.56Lakh whereas Rs66.56 Lakh in the other sector during the year 2007-08

Fixed capital per person engaged, Gross output per person engaged, Net value added per person engaged, and wages per worker all show an increase in other sectors than in manufacturing sector. The ratio of fixed capital to net value added is high in the other sector than manufacturing sector. The ratio of fixed capital to gross output and net value added to gross output is also high in the other sector.

Table -4.6

## Fuels and Materials Consumed, GVA, NVA, Etc 2007-2008

NIC code	Fuels Consumed	Materials Consumed	Total Inputs	Gross value Added	Depreciation	Net value Added
151	5597	192597	217679	15796	3737	12059
152	1215	35531	40419	5224	1070	4155
153	3938	107100	127719	9776	2450	7326
154	6067	279623	344965	68545	3960	64586
155	1413	28994	40493	3075	2185	890
160	152	7681	8964	8008	49	7959
171	5432	29679	42742	10413	2449	7965
172	1777	32378	41842	11127	2681	8445
173	14	177	216	98	4	94
181	571	16740	22847	7229	882	6347
191	53	2844	3311	731	53	677
192	336	11074	15642	1749	144	1605
201	280	9236	13561	1854	177	1678
202	1492	28804	34828	4070	947	3123
210	3322	16528	21528	7295	1034	6261

Table -4.6 (contd.)

221	1869	52657	71953	55256	5306	49950
222	206	2696	6181	2792	92	2700
232	95165	2215932	2324665	158754	16600	142155
241	31552	123444	165842	36420	7944	28476
242	6832	82547	106045	34187	5831	28356
251	15367	365930	407043	42119	5245	36874
252	1268	20148	23636	5954	1293	4661
261	2655	3595	6642	1024	308	716
269	17635	19917	44160	23503	3213	20290
271	30195	154167	203117	22858	2925	19933
272	6354	52061	62024	7687	1915	5772
273	1511	4005	5706	452	61	391
281	186	5338	8972	3325	240	3084
289	2314	10119	18236	14811	4977	9835
291	109	4048	4698	1676	92	1583
292	521	15238	19426	6739	359	6380
293	21	2705	3078	630	75	555
300	42	3130	5505	1501	54	1447
311	410	20710	24228	8332	214	8118
312	172	9317	11209	3324	206	3117
313	111	3888	4183	904	99	805
314	3	93	101	23	0	24
315	19	1400	1564	430	35	394
319	1	221	233	75	0	74
321	1571	40747	49543	15965	1841	14124
322	180	9077	12730	10349	298	10050
323	402	10131	15381	5799	712	5087
331	5	90	145	114	12	102
342	34	918	1154	215	20	195
343	1	4	6	8	1	6
351	1827	27087	48880	32393	860	31533
359	172	1720	2335	1669	207	1463
361	96	2070	2534	630	258	373
369	89	30530	33013	3081	221	2859
Others	1637	30566	203413	24249	6077	18171
Total	252191	4125232	4874337	682238	89413	592823

Table -4.7

**Rent, Loan, Interest Gross Value Of Plant And Machinery, Etc.  
Value Of Products And Byproducts, Value Of Output Etc**

NIC Code	Rent Paid For Fixed Assets	Outstanding Loans	Interest Paid	Rent Received For Fixed Assets	Interest Received	Gross Value Of Plant And Machinery	Value Of Products And By Products	Total Output
151	407	18259	5564	355	185	34597	216651	233475
152	268	7455	263	11	58	7332	43415	45643
153	337	6234	2032	0	108	11304	120988	137495
154	729	63307	6728	102	69	17005	376779	413510
155	76	10349	695	52	5	20302	40411	43568
160	20	2033	590	2	8	0	11656	16972
171	73	51955	3884	6	123	27224	50090	53155
172	226	11218	2207	26	92	21470	46730	52969
173	1	1	11	0	2	59	307	314
181	188	7952	1156	3	64	8386	22688	30076
191	32	217	101	0	3	262	3977	4042
192	56	410	243	0	1	742	15983	17391
201	22	823	188	0	1	0	11112	15415
202	43	10922	1297	89	22	6897	36423	38898
210	74	6479	1110	0	12	17274	28587	28823
221	847	26509	2586	13	63	46502	57096	127209
222	21	2320	265	22	20	1696	2341	8973
232	893	1331	1213	0	408	249440	2472337	2483419
241	352	27620	6310	178	1129	155677	197712	202262
242	644	28339	4532	88	112	41379	129255	140232
251	366	45862	5478	2031	363	64785	417805	449162
252	51	8495	715	2	12	5464	28849	29590
261	7	2830	575	0	0	5466	7660	7666
269	689	7051	960	66	297	36113	65942	67663
271	32	32074	5289	3	256	38060	223641	225975
272	10	3319	1277	2	366	23686	66694	69711
273	1	4863	202	0	0	2617	6143	6158
281	131	1463	135	22	1	986	4019	12297
289	86	18710	1587	6	2	34794	30283	33047
291	2	48	14	3	15	1028	6301	6374
292	25	995	517	1	28	3502	23175	26165
293	3	500	76	0	4	174	3672	3708
300	5	25	227	0	3	374	4488	7006

Table -4.7(contd.)

311	38	2293	525	4	1	2750	30418	32560
312	25	283	70	0	5	2144	13702	14533
313	4	1434	520	0	0	4678	5076	5087
314	1	11	4	0	0	0	124	124
315	2	198	37	0	1	258	1926	1994
319	6	0	0	0	0	0	308	308
321	298	7904	1254	230	29	23040	58787	65508
322	0	17452	3270	0	40	9073	20375	23079
323	43	2938	357	10	6	5090	17797	21180
331	2	48	4	0	0	82	259	259
342	12	152	13	0	0	57	883	1369
343	0	0	1	0	0	0	6	14
351	111	3293	438	71	13	11874	50164	81273
359	9	7131	74	0	51	4216	2810	4004
361	24	1015	46	0	0	740	2882	3164
369	66	2098	214	7	292	748	35260	36094
others	1031	15119	2964	13	97	60463	37199	227662
Total	8389	471337	67818	3418	4367	1009810	5051186	5556575

Table -4.8

Details Regarding Wages and Salaries No Of Workers etc. at 2 Digit Level. 2007-08.

NIC Code	No of Workers	Total Persons Engaged	Wages To Workers	Total Emoluments
15	155432	166644	35260	51360
16	41631	42814	5511	6579
17	15737	18285	8101	12112
18	6779	7737	3587	5189
19	1280	1663	695	1064
20	5714	7229	1927	2946
21	2357	2904	1502	2088
22	3906	7917	4894	15028
23	2996	4065	5837	12647
24	11598	16719	17366	32497
25	14406	19251	11981	20093
26	11390	13868	6148	9222
27	6095	6818	4589	6595
28	4096	5981	3612	7313

Table -4.8 (contd.)

29	2286	3311	2361	4544
30	483	752	459	792
31	3833	5458	4044	6362
32	3193	4556	2734	7111
33	1388	1789	1039	2048
34	188	261	102	147
35	4908	6253	6422	13262
36	1057	1322	322	562
Others	7889	10550	4743	7769
<b>Total</b>	<b>308642</b>	<b>356147</b>	<b>133236</b>	<b>227330</b>

Table -4.9

**Principal Characteristics Of Major Industrial Activities For The Last 10 Years (All India Level)  
1997-98 To 2007-08.**

Sl No	Factors	Unit	1997-98	2007-2008	% of Increase
1	No Of Factories	Numbers	136012	146385	7.63
2	Fixed Capital	Rs In Lakhs	42308227	84513209	99.76
3	Invested Capital	Rs In Lakhs	57682603	128012583	121.93
4	No Of Workers	Numbers	7652254	8198110	7.13
5	Total Persons Engaged	Numbers	10073485	10452535	3.76
6	Wages To Workers	Rs In Lakhs	2978167	5103023	71.35
7	Total Inputs	Rs In Lakhs	63809899	222295282	248.37
8	Total Outputs	Rs In Lakhs	83633644	277570904	231.89
9	Depreciation	Rs In Lakhs	3179621	7116354	123.81
10	Net Value Added	Rs In Lakhs	46644124	48159268	3.25

Above table shows the variation of principal characteristics of major industrial activities for the last 10 years at all India level. On comparison, the number of workers in the industrial sector increased by 7.13%. The number of Total persons engaged also increased by 3.76 %. At the same time the wages to workers increased from Rs 2978167 Lakhs to 5103023 Lakhs, ie 71.35 % increase. The increase of Total input is 248.37 %, while the increase of Total output is only 231.89 %. The increase in Depreciation is only 123.81%. In the case of number of registered factories only 7.63 % increase is there, for the last 10 years. Fixed capital, Invested capital, Net value added also shows increased variation for the last 10 years.

Table -4.10

**Principal Characteristics Of Major Industrial Activities For The Last 10 Years (Kerala) 1997-98  
To 2007-08.**

SI No	Factors	Unit	1997-98	2007- 2008	% of increase
1	No Of Factories	Numbers	4913	5584	13.66
2	Fixed Capital	Rs In Lakhs	837415	914336	9.19
3	Invested Capital	Rs In Lakhs	1159394	1707590	47.28
4	No Of Workers	Numbers	291332	308641	5.94
5	Total Persons Engaged	Numbers	357852	356147	-0.48
6	Wages To Workers	Rs In Lakhs	85790	133235	55.30
7	Total Inputs	Rs In Lakhs	1617493	4874337	201.35
8	Total Outputs	Rs In Lakhs	2017441	5556577	175.43
9	Depreciation	Rs In Lakhs	52185	89416	71.34
10	Net Value Added	Rs In Lakhs	347763	592824	70.47

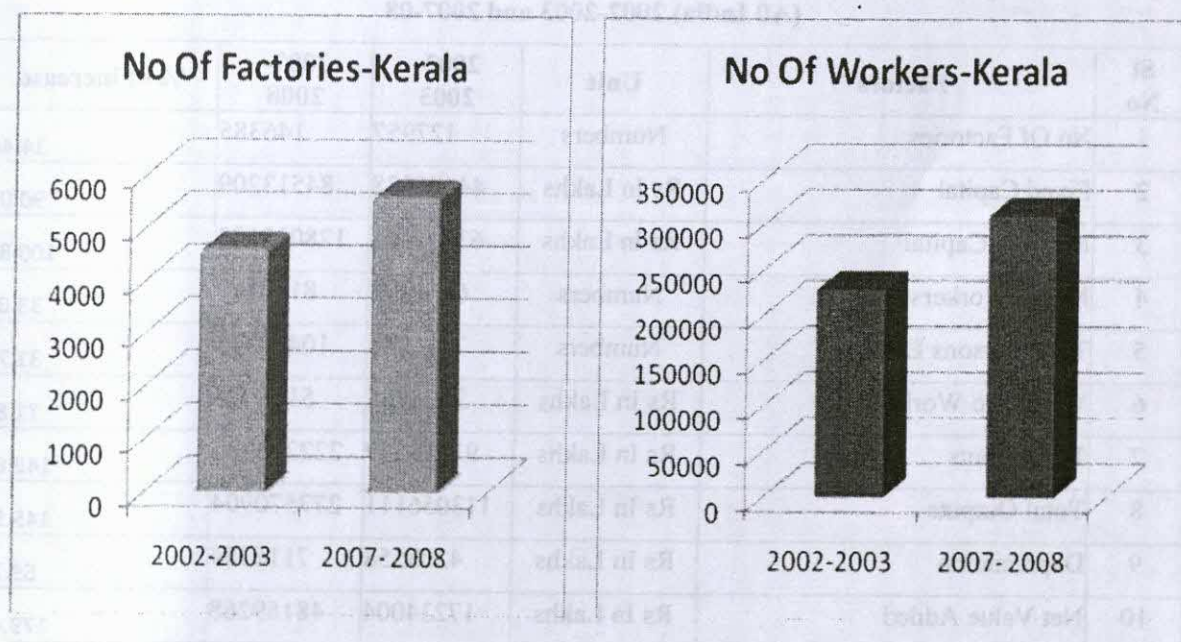
Above table shows the variation of principal characteristics of major industrial activities for the last 10 years at Kerala. On comparison, the number of workers in the industrial sector increased by 5.94 %. The number of Total persons engaged decreased by 0.48 %. At the same time the wages to workers increased from Rs 85790 Lakhs to Rs 133235 Lakhs, ie 55.30 %. The increase of Total input is 201.35 %, while the increase of Total output is only 175.43 %. The increase in Depreciation is only 71.34 %. In the case of number of registered factories only 13.66 % increase is there, for the last 10 years. Fixed capital, Invested capital, Net value added also shows increased variation for the last 10 years.



Table -4.11

Principal Characteristics Of Major Industrial Activities For The Last 5 Years (Kerala) 2002-2003 and 2007-08 (source ;internet)

SI No	Factors	Unit	2002-2003	2007- 2008	% of increase
1	No Of Factories	Numbers	4587	5584	21.74
2	Fixed Capital	Rs In Lakhs	679483	914336	34.56
3	Invested Capital	Rs In Lakhs	1045996	1707590	63.25
4	No Of Workers	Numbers	227347	308641	35.76
5	Total Persons Engaged	Numbers	270548	356147	31.64
6	Wages To Workers	Rs In Lakhs	87371	133235	52.49
7	Total Inputs	Rs In Lakhs	2236085	4874337	117.99
8	Total Outputs	Rs In Lakhs	2665085	5556577	108.50
9	Depreciation	Rs In Lakhs	65590	89416	36.33
10	Net Value Added	Rs In Lakhs	363410	592824	63.13



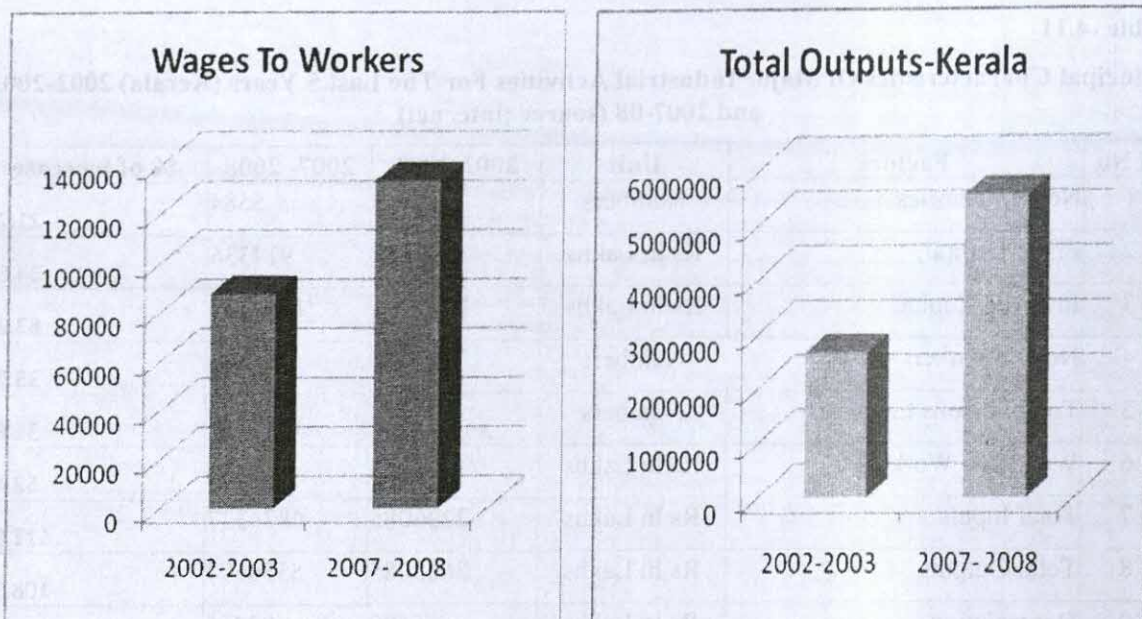


Table -4.12

**Principal Characteristics Of Major Industrial Activities For The Last 5 Years  
(All India) 2002-2003 and 2007-08**

Sl No	Factors	Unit	2002-2003	2007-2008	% of increase
1	No Of Factories	Numbers	127957	146385	14.40
2	Fixed Capital	Rs In Lakhs	44475938	84513209	90.02
3	Invested Capital	Rs In Lakhs	63747308	128012583	100.81
4	No Of Workers	Numbers	6161493	8198110	33.05
5	Total Persons Engaged	Numbers	7935948	10452535	31.71
6	Wages To Workers	Rs In Lakhs	2968905	5103023	71.88
7	Total Inputs	Rs In Lakhs	91618549	222295282	142.63
8	Total Outputs	Rs In Lakhs	113056111	277570904	145.52
9	Depreciation	Rs In Lakhs	4203558	7116354	69.29
10	Net Value Added	Rs In Lakhs	17234004	48159268	179.44

Regarding the above two tables the variation of principal characteristics of major industrial activities for the last 5 years of Kerala and India are reflected. While taking into consideration of the number of factories in Kerala, it increased by 21.74 % for the last five years from 2002-2003 to 2007 - 2008. But number of workers increased by 35.76 % only. Wages increased by 52.49 %. Total input increased by 117.99 %, where as total output increase is 108.50 %.

When all India figures are taken in to consideration regarding the above characteristics number of factories increased by 14.40 % only, while in Kerala increase is 21.74 %. Number of workers amounted 35.76 % increase while in India it is 33.05 %. Wages to workers increased by 71.88 %, whereas Kerala shows an increase of 52.49 %.. In the case of Total inputs Kerala shows a figure of 117.99%, while India shows a figure of 142.63 % increase. Total output shows 145.52 % increase in all India level where as Kerala shows only 108.50 %.

ANNEXURE-1

NATIONAL INDUSTRIAL CLASSIFICATION

Table A.11

Principal Characteristics of Major Industrial Activities in Kerala  
and India (2002-2003 and 2007-08)

Sl No	Parameter	Unit	2002-2003	2007-08
1	No Of factories	Number	12757	14111
2	Fixed Capital	Rs. in Lakhs	4413984	5911111
3	Investment in Fixed Capital	Rs. in Lakhs	871111	1111111
4	No Of workers	Number	61616	71111
5	Total Payable to workers	Rs. in Lakhs	211111	211111
6	Total Output	Rs. in Lakhs	1111111	1111111
7	Total Investment	Rs. in Lakhs	1111111	1111111
8	Depreciation	Rs. in Lakhs	111111	111111
9	Net Investment	Rs. in Lakhs	111111	111111

	<b>DIVISION 15: MANUFACTURE OF FOOD PRODUCTS AND BEVERAGES</b>
151	Production, Processing and Preservation of Meat, Fish, Fruit Vegetables, Oils and Fats
152	Manufacture of Dairy Product (production of Raw milk is classified in class 0121)
153	Manufacture of Grain Mill Products, Starches and Starch Products and Prepared Animal Feeds
154	Manufacture of other Food Products
155	Manufacture of Beverages
	<b>DIVISION: 16 Manufacture Of Tobacco Products</b>
160	Manufacture of Tobacco Products (Tobacco related Products are also included while Preliminary Processing of Tobacco leaves is classified in class 0111)
	<b>DIVISION: 17 Manufacture Of Textiles</b>
171	Spinning, Weaving And Finishing of Textiles
172	Manufacture of other Textiles
173	Manufacture of Knitted and Crocheted Fabrics and Articles
	<b>DIVISION:18 Manufacture of wearing Apparel; Dressing and Dyeing of Fur</b>
181	Manufacture of Wearing Apparel, except Fur apparel (This class includes Manufacture of Wearing Apparel made of material not made in the same unit. Both Regular and Contract activities are included)
182	Dressing and Dying of Fur, Manufacture of Articles of Fur
	<b>DIVISION 19:Tanning and Dressing of Leather, Manufacture of Luggage, Handbags, Saddlery, Harness &amp;Footwear</b>
191	Tanning and Dressing of Leather, Manufacture of Luggage Handbags Sadlery &Harness
192	Manufacture of Footwear
	<b>DIVISION 20:Manufacture of Wood and of Product of Wood and Cork, Except Furniture; Manufacture of Articles of Straw and Plating Materials</b>
201	Saw Milling and Planning of wood
202	Manufacture of Products of Wood, cork Straw and Plating Materials
	<b>DIVISION 21:Manufacture of Paper and Paper Products</b>
210	Manufacture of Paper and Paper Product
	<b>DIVISION 22:Publishing, Printing and Reproduction of Recorded Media</b>
221	Publishing [this group includes publishing whether or not connected with Publishing, publishing involves Financial, technical, artistic, legal and marketing activities, among others but not predominantly]
222	Printing and Service Activities Related to Printing
223	Reproduction of Recorded media [This class includes Reproduction of Records, Audio, Video and Computer Tapes from Master Copies, Reproduction of Floppy, Hard or Compact Disks, Reproduction of Non-Customized Software and Film Duplicating]
	<b>DIVISION 23 ; Manufacture of Coke ,Refined Petroleum Products and Nuclear Fuel</b>
231	Manufacture of Coke Oven Products (This class includes the operation of coke ovens chiefly for the production of coke or semi coke from hard coal and lignite, Retort carbon and residual products such as coal tar or pitch. Agglomeration of coke. Distillation of Coal tar is classified in class 2411.)
232	Manufacture of refined petroleum products
233	Processing of Nuclear fuel [Includes extraction of Uranium metal from pitchblende or other uranium bearing ores; Manufacture of Alloys, Dispersions or mixtures of natural uranium or its compounds; Manufacture of enriched uranium and its compounds; other Radio active elements, Isotopes or Compounds; and Non - Irradiated Fuel elements for use in Nuclear Reactors

	<b>DIVISION: 24 MANUFACTURE OF CHEMICALS AND CHEMICAL PRODUCTS</b>
241	Manufacture of Chemicals and Chemical Products
242	Manufacture of Other Chemical Products
243	Manufacture of Man -Made Fibers [This class includes Manufacture of Artificial Or Synthetic Filament And Non Filament Fibbers
	<b>DIVISION; 25 Manufacture of Rubber And Plastic Products</b>
251	Manufacture of Rubber products
252	Manufacture of Plastic Products
	<b>DIVISION 26:Manufacture of Other Non Metallic mineral Products</b>
261	Manufacture of Glass and Glass and Glass products
269	Manufacture of Non metallic Mineral Products N.E.C
	<b>DIVISION 27:Manufacture of Basic metals</b>
271	Manufacture of basic Iron and steel
272	Manufacture of Basic Precious And Non ferrous Metals
273	Casting of Metals [This group includes Casting finished or semi finished Products Producing a variety of Goods, All characteristics of other activity classes
	<b>DIVISION 28:Manufacture of Fabricated Metal Products, Except Machinery and Equipments</b>
281	Manufacture of Structural metal Products, Tanks, Reservoirs And Steam Generators
289	Manufacture of Other Fabricated metal Products; Metal Working service Activities
	<b>DIVISION 29:Manufacture of Machinery And Equipment N E C</b>
291	Manufacture of General purpose Machinery
292	Manufacture Special purpose machinery
293	Manufacture of Domestic Appliances, NEC
	<b>DIVISION 30:Manufacture of Office, Accounting And computing Machinery</b>
300	Manufacture of Office, Accounting And Computing Machinery
	<b>DIVISION 31:Manufacture of Electrical Machinery And Apparatus NEC</b>
311	Manufacture of Electrical Machinery And Apparatus NEC
312	Manufacture of Electricity Distribution And Control Apparatus [Electrical Apparatus For Switching Or Protecting Electrical Circuits (E. G. Switches, Fuses, Voltage Limiters, Surge Suppressors, junction Boxes Etc)For a voltage not exceeding 1000volts;Boards panels, consoles, Cabinets And other Bases Equipped With Two or more of The Above Apparatus For Electricity Control Or Distribution of Electricity Including Power Capacitors]
313	Manufacture of Insulated Wire And Cable [Insulated (including Enameled Or Anodized) Wire, Cable(Including Coaxial Cable )And Other Insulated Conductors; Insulated Strip As Is Used In Large Capacity Machines Or control Equipment: And Optical Fiber Cables]
314	Manufacture of Accumulators, Primary cells And Primary Batteries
315	Manufacture Of Electric Lamps And Lighting Equipment
319	Manufacture Of Other Electrical equipment NEC
	<b>DIVISION 32: Manufacture Of Radio, Television And Communication Equipment And Apparatus</b>
321	Manufacture Of Electronic valves And Tubes And Other Electronic Components
322	Manufacture of Television And Radio Transmitters And Apparatus For Line Telephony and Line Telegraphy
323	Manufacture of Television And Radio Receivers, Sound Or Video Recording Or Reproducing Apparatus And Associated Goods

	<b>DIVISION 33: Manufacture Of Medical, Precision, And Optical Instruments, Watches And Clocks</b>
331	Manufacture of Medical Appliances and Instruments And Appliances For Measuring, Checking, Testing, Navigating And Other Purposes Except Optical Instruments
332	Manufacture of Optical Instruments And Photographic Equipment
333	Manufacture of Watches And Clocks
	<b>DIVISION 34: Manufacture of Motor Vehicles, Trailers And Semi- Trailers</b>
341	Manufacture of Motor Vehicles
342	Manufacture of Bodies (Coach Work) For Motor Vehicles; Manufacture of Trailers And Semi Trailers
343	Manufacture Of Parts And Accessories For Motor Vehicles And Their Engines [Brakes, gear boxes, Axles, Road wheels, Suspension shock Absorbers, Radiators, Silencers, Exhaust pipes, Clutches, Steering Wheels, Steering Columns And Steering Boxes And Other Parts And Accessories N.E.C]
	<b>DIVISION 35; Manufacture of Other Transport Equipment</b>
351	Building and Repair Of Ships And & Boats
352	Manufacture of Railway And Tramway Locomotives And Rolling stock
353	Manufacture of Aircraft And Spacecraft
359	Manufacture of Transport equipment NEC
	<b>DIVISION 36; Manufacture of Furniture: Manufacturing N .E.C</b>
361	Manufacture of Furniture
369	Manufacturing N.E.C

369	Manufacturing N.E.C	203489	13437	90	5581	2853	712
361	Manufacture of Furniture	316616	21915	2349	10704	5002	1550
359	Manufacture of Transport equipment NEC	19197	10295	02	1914	1254	43
353	Manufacture of Aircraft And Spacecraft	4528	2192	02	3972	212	12
352	Manufacture of Railway And Tramway Locomotives And Rolling stock	3926	6900	74	311	03	622
351	Building and Repair Of Ships And & Boats	23716	15127	194	17306	2737	122

**ANNEXURE-II**

**ASI DATA -KERALA**



**Table -1**  
**Capital Employed, Input, Output and GVA at Industry (NIC 04-2 Digit) by State**  
**(Values in Rs Lakh, Others in Number)**

Sl No	Characteristics	All	15	16	17	18	19
1	Number Of Factories	5584	1183	750	380	33	73
2	Factories In Operation	5203	1085	750	313	32	60
3	Fixed Capital	914336	117796	437	54308	15807	1677
4	Physical Working Capital	793254	160259	490	30754	3386	3587
5	Working Capital	418223	52260	4106	-6286	218	2009
6	Invested Capital	1707590	278054	927	85062	19193	5264
7	Gross Value Of Addition To Fixed Capital	193030	21131	97	11693	1930	170
8	Rent Paid For Fixed Assets	8390	1818	20	299	188	88
9	Outstanding Loan	471336	105603	2033	63174	7952	627
10	Interest Paid	67818	15283	590	6102	1156	344
11	Rent Received For Fixed Assets	3419	521	2	32	3	0
12	Interest Received	4366	426	8	218	64	4
13	Gross Value Of Plant & Machinery	1009806	90539	0	48752	8386	1004
14	Value Of Product And By-Product	5051188	798244	11656	97127	22688	19960
15	Total Output	5556577	873692	16972	106438	30076	21433
16	Fuels Consumed	252186	18230	152	7224	571	388
17	Materials Consumed	4125232	643845	7681	62234	16740	13917
18	Total Inputs	4874337	771275	8964	84800	22847	18954
19	Gross Value Added	682240	102417	8008	21638	7229	2479
20	Depreciation	89416	13401	49	5133	882	197
21	Net Value Added	592824	89016	7959	16505	6347	2283
22	Net Fixed Capital Formation	60455	3771	35	3922	977	-30
23	Gross Fixed Capital Formation	149872	17173	84	9055	1860	167
24	Addition in Stock of	181045	19154	111	3251	1071	4
	(a) Materials, Fuels etc.	181397	10295	102	1844	1054	-620
	(b) Semi Finished Goods	-4298	1959	0	1097	-15	2
	(c) Finished Goods	3946	6900	9	310	32	622
25	Gross Capital Formation	330916	36327	194	12306	2931	172
26	Income	516616	71915	7349	10104	5002	1850
27	Profit	243489	13437	40	-5581	-865	712

Table -1 (contd.)

Sl No	Characteristics	20	21	22	23	24	25
1	Number Of Factories	518	83	124	16	220	475
2	Factories In Operation	466	83	119	16	220	440
3	Fixed Capital	10431	11000	36341	245670	142768	57529
4	Physical Working Capital	9001	3082	12848	293483	82857	42957
5	Working Capital	5715	511	17076	117855	44166	37694
6	Invested Capital	19433	14082	49189	539153	225625	100486
7	Gross Value Of Addition To Fixed Capital	1650	2155	13104	77862	19977	10772
8	Rent Paid For Fixed Assets	64	74	867	893	996	417
9	Outstanding Loan	11746	6479	28828	1331	55959	54357
10	Interest Paid	1485	1110	2851	1213	10842	6193
11	Rent Received For Fixed Assets	89	0	35	0	267	2033
12	Interest Received	22	12	83	408	1241	374
13	Gross Value Of Plant & Machinery	6897	17274	48197	249440	197056	70248
14	Value Of Product And By-Product	47534	28587	59437	2472336	326968	446654
15	Total Output	54313	28823	136182	2483419	342495	478753
16	Fuels Consumed	1772	3322	2075	95165	38384	16634
17	Materials Consumed	38041	16528	55354	2215932	205990	386078
18	Total Inputs	48389	21528	78134	2324665	271887	430679
19	Gross Value Added	5924	7295	58048	158754	70608	48074
20	Depreciation	1124	1034	5398	16600	13776	6538
21	Net Value Added	4801	6261	52650	142154	56832	41535
22	Net Fixed Capital Formation	157	563	3534	42686	3749	1511
23	Gross Fixed Capital Formation	1281	1597	8932	59286	17525	8049
24	Addition in Stock of	1191	609	-467	137894	14824	-193
	(a) Materials, Fuels etc.	715	660	-473	145483	15398	1817
	(b) Semi Finished Goods	-38	46	41	629	679	92
	(c) Finished Goods	514	-97	-35	-8218	-1253	-2102
25	Gross Capital Formation	2471	2205	8466	197179	32349	7856
26	Income	3252	5077	48931	140048	44995	34926
27	Profit	-24	2739	30814	123122	4754	10365

Table -1 (contd.)

Sl No	Characteristics	26	27	28	29	30	31
1	Number Of Factories	811	105	125	92	6	88
2	Factories In Operation	767	93	121	92	6	80
3	Fixed Capital	41487	59264	21503	4124	825	5604
4	Physical Working Capital	13478	40651	5767	9397	805	10362
5	Working Capital	10858	188	8506	19731	3233	11017
6	Invested Capital	54965	99915	27271	13521	1630	15966
7	Gross Value Of Addition To Fixed Capital	5873	7679	1612	968	82	2093
8	Rent Paid For Fixed Assets	695	43	217	30	5	78
9	Outstanding Loan	9881	40256	20173	1543	25	4219
10	Interest Paid	1535	6768	1723	607	227	1157
11	Rent Received For Fixed Assets	66	6	28	3	0	4
12	Interest Received	297	622	3	47	3	7
13	Gross Value Of Plant & Machinery	41578	64362	35780	4705	374	9830
14	Value Of Product And By-Product	73601	296479	34302	33149	4488	51555
15	Total Output	75329	301844	45344	36247	7006	54605
16	Fuels Consumed	20291	38060	2499	651	42	715
17	Materials Consumed	23512	210233	15458	21990	3130	35629
18	Total Inputs	50801	270847	27208	27202	5505	41518
19	Gross Value Added	24528	30997	18136	9045	1501	13087
20	Depreciation	3521	4901	5217	527	54	556
21	Net Value Added	21007	26095	12919	8518	1447	12531
22	Net Fixed Capital Formation	1452	1037	-4483	394	573	1453
23	Gross Fixed Capital Formation	4974	5938	734	921	627	2008
24	Addition in Stock of	1140	-8926	932	884	74	1534
	(a) Materials, Fuels etc.	789	-10800	407	608	75	-88
	(b) Semi Finished Goods	185	461	718	309	8	271
	(c) Finished Goods	166	1413	-193	-33	-9	1351
25	Gross Capital Formation	6114	-2988	1667	1805	701	3542
26	Income	18776	19284	10979	7880	1215	11297
27	Profit	7777	11722	2130	1859	235	3022

Table -1 (contd.)

Sl No	Characteristics	32	33	34	35	36	Other
1	Number Of Factories	35	31	15	35	115	272
2	Factories In Operation	35	29	15	35	73	272
3	Fixed Capital	26135	5602	228	13110	3263	39426
4	Physical Working Capital	18226	2523	188	23615	6674	18865
5	Working Capital	19012	4618	247	45925	3968	15595
6	Invested Capital	44361	8125	416	36725	9937	58292
7	Gross Value Of Addition To Fixed Capital	6659	2000	54	3140	926	1399
8	Rent Paid For Fixed Assets	298	45	12	120	90	1031
9	Outstanding Loan	25356	2986	152	10423	3113	15119
10	Interest Paid	4524	361	14	512	260	2964
11	Rent Received For Fixed Assets	230	10	0	71	7	13
12	Interest Received	68	6	0	64	293	97
13	Gross Value Of Plant & Machinery	32113	5171	57	16090	1488	60463
14	Value Of Product And By-Product	79162	18056	888	52974	38142	37199
15	Total Output	88586	21439	1383	85277	39258	227662
16	Fuels Consumed	1750	407	35	1999	185	1637
17	Materials Consumed	49824	10221	921	28807	32599	30566
18	Total Inputs	62273	15526	1160	51215	35547	203413
19	Gross Value Added	26313	5913	223	34062	3711	24249
20	Depreciation	2139	723	21	1067	479	6077
21	Net Value Added	24173	5190	201	32996	3232	18171
22	Net Fixed Capital Formation	1173	644	18	2016	348	-5045
23	Gross Fixed Capital Formation	3311	1368	40	3083	827	1032
24	Addition in Stock of	3609	-76	14	-2887	910	6387
	(a) Materials, Fuels etc.	3395	-116	-6	7533	673	2654
	(b) Semi Finished Goods	-560	-111	54	-10136	14	-4
	(c) Finished Goods	774	151	-34	-284	223	3737
25	Gross Capital Formation	6921	1291	53	196	1738	7419
26	Income	19352	4784	176	32364	2881	14177
27	Profit	10271	2281	16	17172	2247	5245

**Table -2**  
**Employment and Emoluments at Industry (NIC-04-2 Digit) by State**  
**(Wages in Rs. Lakh, Others in Number)**

SI No	Characteristics	All	15	16	17	18	19
A	No. Of Persons Engaged	356147	166644	42814	18285	7737	1663
1	Workers	308641	155432	41631	15737	6779	1280
1.1	Directly Employed	268486	151686	19190	15265	6748	1275
	Men	91915	13927	3944	10100	2598	815
	Women	176571	137759	15246	5165	4150	460
	Children	0	0	0	0	0	0
1.2	Employed Through Contractors	40155	3746	22441	472	31	5
2	Employees Other Than Workers	45707	10825	1052	2507	958	357
2.1	Supervisory and Managerial	24547	5357	666	1189	629	218
2.2	Other Employees	21160	5468	386	1318	329	139
3	Unpaid family members/proprietor etc.	1800	388	131	42	1	26
B	Total Man days Employed (in '000)	91292	36584	11184	5625	2179	497
C	Wages and Salaries Including						
	Employers' Contribution	273127	58478	7310	15686	5868	1139
1	Wages and Salary Including Bonus	227329	51360	6579	12112	5189	1064
1.1	Wages and Salary	209002	44926	5933	10651	4949	1021
1.1.1	Workers	133235	35260	5511	8101	3587	695
1.1.2	Supervisory & Managerial	50239	6197	242	1497	1058	218
1.1.3	Other Employees	25528	3469	180	1053	304	108
1.2	Bonus to All Staff	18327	6434	646	1460	240	43
2	Employers' Contribution	45798	7118	731	3574	679	75

Table -2 (contd.)

SI No	Characteristics	20	21	22	23	24	25
A	No. Of Persons Engaged	7229	2904	7917	4065	16719	19251
1	Workers	5714	2357	3906	2996	11598	14406
1.1	Directly Employed	5578	2247	3821	1272	10002	12780
	Men	3495	1529	3530	1270	8276	10473
	Women	2083	718	291	2	1726	2307
	Children	0	0	0	0	0	0
1.2	Employed Through Contractors	136	109	85	1724	1596	1626
2	Employees Other Than Workers	1210	523	4009	1069	5117	4673
2.1	Supervisory and Managerial	631	332	1326	701	2688	2708
2.2	Other Employees	579	191	2683	368	2429	1965
3	Unpaid family members/proprietor etc.	305	23	2	1	4	172
B	Total Man days Employed (in '000)	1870	940	2595	1433	5528	5684
C	Wages and Salaries Including						
	Employers' Contribution	3276	2338	18118	16926	40241	24561
1	Wages and Salary Including Bonus	2946	2088	15028	12647	32497	20093
1.1	Wages and Salary	2701	1948	14335	12070	30500	18480
1.1.1	Workers	1927	1502	4894	5837	17366	11981
1.1.2	Supervisory & Managerial	480	352	4209	4403	8634	4724
1.1.3	Other Employees	294	94	5232	1830	4500	1775
1.2	Bonus to All Staff	245	140	692	578	1997	1612
2	Employers' Contribution	330	250	3090	4279	7744	4468

Table -3  
Capital Employed, Input, Output and GVA of Industry (SIC 04-33) by State  
(Values in Rs Lakh, Others in Number)

Table -2 (contd.)

SI No	Characteristics	26	27	28	29	30	31
A	No. Of Persons Engaged	13868	6818	5981	3311	752	5458
1	Workers	11390	6095	4096	2286	483	3833
1.1	Directly Employed	11022	2624	4034	2067	483	3757
	Men	8154	2574	3835	1965	353	2694
	Women	2868	50	199	102	130	1063
	Children	0	0	0	0	0	0
1.2	Employed Through Contractors	368	3471	62	219	0	76
2	Employees Other Than Workers	1936	689	1853	1008	269	1613
2.1	Supervisory and Managerial	1078	371	1543	607	130	796
2.2	Other Employees	858	318	310	401	139	817
3	Unpaid family members/proprietor etc.	542	34	32	18	0	12
B	Total Man days Employed (in '000)	3382	2131	1664	955	223	1599
C	Wages and Salaries Including						
	Employers' Contribution	10999	7562	8848	6021	979	8275
1	Wages and Salary Including Bonus	9222	6595	7313	4544	792	6362
1.1	Wages and Salary	8288	6348	6746	4448	765	6070
1.1.1	Workers	6148	4589	3612	2361	459	4044
1.1.2	Supervisory & Managerial	1332	1413	2925	1522	184	1531
1.1.3	Other Employees	808	346	209	565	122	495
1.2	Bonus to All Staff	935	248	567	96	27	293
2	Employers' Contribution	1777	967	1535	1477	187	1913

Table -2 (contd.)

SI No	Characteristics	32	33	34	35	36	Other
A	No. of Persons Engaged	4556	1789	261	6253	1322	10550
1	Workers	3193	1388	188	4908	1057	7889
1.1	Directly Employed	2730	1139	161	1942	837	7827
	Men	1634	660	153	1935	676	7327
	Women	1096	479	8	7	161	500
	Children	0	0	0	0	0	0
1.2	Employed Through Contractors	463	250	27	2966	220	63
2	Employees Other Than Workers	1363	398	65	1343	254	2617
2.1	Supervisory and Managerial	1128	215	37	593	135	1469
2.2	Other Employees	235	183	28	750	119	1148
3	Unpaid family members/proprietor etc.	0	3	8	2	12	42
B	Total Man days Employed (in '000)	1387	531	75	1720	380	3124
C	Wages and Salaries Including						
	Employers' Contribution	9081	2504	161	15192	635	8932
1	Wages and Salary Including Bonus	7111	2048	147	13262	562	7769
1.1	Wages and Salary	6497	1925	143	12428	543	7291
1.1.1	Workers	2734	1039	102	6422	322	4743
1.1.2	Supervisory & Managerial	3456	682	30	3132	163	1855
1.1.3	Other Employees	307	204	11	2874	58	693
1.2	Bonus to All Staff	614	123	4	833	19	479
2	Employers' Contribution	1970	456	14	1930	73	1163



**Table -3**  
**Capital Employed, Input, Output and GVA at Industry (NIC 04-3 Digit) by State**  
**(Values in Rs Lakh, Others in Number)**

SI No	Characteristics	All	151	152	153	154	155
1	Number Of Factories	5584	207	59	116	759	43
2	Factories In Operation	5203	177	59	116	697	37
3	Fixed Capital	914336	34315	9194	14466	38298	21522
4	Physical Working Capital	793254	42416	1890	21779	87491	6683
5	Working Capital	418223	11760	1513	2712	47914	-11638
6	Invested Capital	1707590	76731	11085	36245	125789	28204
7	Gross Value Of Addition To Fixed Capital	193030	4570	2541	4078	6697	3245
8	Rent Paid For Fixed Assets	8390	407	268	337	729	76
9	Outstanding Loan	471336	18259	7455	6234	63307	10349
10	Interest Paid	67818	5564	263	2032	6728	695
11	Rent Received For Fixed Assets	3419	355	11	0	102	52
12	Interest Received	4366	185	58	108	69	5
13	Gross Value Of Plant & Machinery	1009806	34597	7332	11304	17005	20302
14	Value Of Product And By-Product	5051188	216651	43415	120988	376779	40411
15	Total Output	5556577	233475	45643	137495	413510	43568
16	Fuels Consumed	252186	5597	1215	3938	6067	1413
17	Materials Consumed	4125232	192597	35531	107100	279623	28994
18	Total Inputs	4874337	217679	40419	127719	344965	40493
19	Gross Value Added	682240	15796	5224	9776	68545	3075
20	Depreciation	89416	3737	1070	2450	3960	2185
21	Net Value Added	592824	12059	4155	7326	64586	890
22	Net Fixed Capital Formation	60455	-597	1436	1449	1599	-116
23	Gross Fixed Capital Formation	149872	3140	2505	3899	5559	2070
24	Addition in Stock of	181045	6617	329	3077	7746	1384
	(a) Materials, Fuels etc.	181397	58	294	2733	6123	1086
	(b) Semi Finished Goods	-4298	-22	23	10	1882	66
	(c) Finished Goods	3946	6581	12	334	-259	232
25	Gross Capital Formation	330916	9758	2835	6976	13305	3454
26	Income	516616	6088	3624	4957	57128	119
27	Profit	243489	-421	1108	1882	14136	-3267

Table -3 (contd.)

SI No	Characteristics	160	171	172	173	181	191
1	Number Of Factories	750	230	147	3	33	5
2	Factories In Operation	750	188	122	3	32	5
3	Fixed Capital	437	31820	22463	25	15807	417
4	Physical Working Capital	490	15672	15001	81	3386	1267
5	Working Capital	4106	-10014	3744	-15	218	357
6	Invested Capital	927	47491	37464	106	19193	1684
7	Gross Value Of Addition To Fixed Capital	97	7617	4075	1	1930	83
8	Rent Paid For Fixed Assets	20	73	226	1	188	32
9	Outstanding Loan	2033	51955	11218	1	7952	217
10	Interest Paid	590	3884	2207	11	1156	101
11	Rent Received For Fixed Assets	2	6	26	0	3	0
12	Interest Received	8	123	92	2	64	3
13	Gross Value Of Plant & Machinery	0	27224	21470	59	8386	262
14	Value Of Product And By-Product	11656	50090	46730	307	22688	3977
15	Total Output	16972	53155	52969	314	30076	4042
16	Fuels Consumed	152	5432	1777	14	571	53
17	Materials Consumed	7681	29679	32378	177	16740	2844
18	Total Inputs	8964	42742	41842	216	22847	3311
19	Gross Value Added	8008	10413	11127	98	7229	731
20	Depreciation	49	2449	2681	4	882	53
21	Net Value Added	7959	7965	8445	94	6347	677
22	Net Fixed Capital Formation	35	4149	-224	-3	977	30
23	Gross Fixed Capital Formation	84	6597	2457	1	1860	83
24	Addition in Stock of	111	2558	696	-3	1071	10
	(a) Materials, Fuels etc.	102	1290	558	-4	1054	-97
	(b) Semi Finished Goods	0	1071	25	1	-15	-21
	(c) Finished Goods	9	197	113	0	32	128
25	Gross Capital Formation	194	9155	3153	-2	2931	94
26	Income	7349	4009	6013	83	5002	544
27	Profit	40	-6665	1083	1	-865	206

Table -3 (contd.)

Sl No	Characteristics	192	201	202	210	221	222
1	Number Of Factories	68	314	203	83	61	63
2	Factories In Operation	55	275	192	83	61	58
3	Fixed Capital	1260	1607	8824	11000	34283	2058
4	Physical Working Capital	2321	1991	7010	3082	12258	590
5	Working Capital	1652	150	5565	511	14786	2290
6	Invested Capital	3580	3598	15834	14082	46542	2647
7	Gross Value Of Addition To Fixed Capital	87	153	1498	2155	13084	20
8	Rent Paid For Fixed Assets	56	22	43	74	847	21
9	Outstanding Loan	410	823	10922	6479	26509	2320
10	Interest Paid	243	188	1297	1110	2586	265
11	Rent Received For Fixed Assets	0	0	89	0	13	22
12	Interest Received	1	1	22	12	63	20
13	Gross Value Of Plant & Machinery	742	0	6897	17274	46502	1696
14	Value Of Product And By-Product	15983	11112	36423	28587	57096	2341
15	Total Output	17391	15415	38898	28823	127209	8973
16	Fuels Consumed	336	280	1492	3322	1869	206
17	Materials Consumed	11074	9236	28804	16528	52657	2696
18	Total Inputs	15642	13561	34828	21528	71953	6181
19	Gross Value Added	1749	1854	4070	7295	55256	2792
20	Depreciation	144	177	947	1034	5306	92
21	Net Value Added	1605	1678	3123	6261	49950	2700
22	Net Fixed Capital Formation	-60	-42	199	563	4129	-595
23	Gross Fixed Capital Formation	84	135	1146	1597	9436	-503
24	Addition in Stock of	-6	491	701	609	-446	-20
	(a) Materials, Fuels etc.	-523	301	415	660	-452	-21
	(b) Semi Finished Goods	23	-2	-36	46	45	-4
	(c) Finished Goods	494	192	322	-97	-39	5
25	Gross Capital Formation	78	625	1847	2205	8989	-523
26	Income	1306	1468	1784	5077	46517	2414
27	Profit	506	426	-450	2739	29900	914

Table -3 (contd.)

Sl No	Characteristics	232	241	242	251	252	261
1	Number Of Factories	16	58	162	316	159	5
2	Factories In Operation	16	58	162	292	148	5
3	Fixed Capital	245670	94163	48605	45656	11873	3727
4	Physical Working Capital	293482	47325	35532	37988	4969	1316
5	Working Capital	117854	8182	35984	30039	7655	783
6	Invested Capital	539153	141487	84137	83644	16842	5042
7	Gross Value Of Addition To Fixed Capital	77862	11834	8143	7545	3227	164
8	Rent Paid For Fixed Assets	893	352	644	366	51	7
9	Outstanding Loan	1331	27620	28339	45862	8495	2830
10	Interest Paid	1213	6310	4532	5478	715	575
11	Rent Received For Fixed Assets	0	178	88	2031	2	0
12	Interest Received	408	1129	112	363	12	0
13	Gross Value Of Plant & Machinery	249440	155677	41379	64785	5464	5466
14	Value Of Product And By-Product	2472337	197712	129255	417805	28849	7660
15	Total Output	2483419	202262	140232	449162	29590	7666
16	Fuels Consumed	95165	31552	6832	15367	1268	2655
17	Materials Consumed	2215932	123444	82547	365930	20148	3595
18	Total Inputs	2324665	165842	106045	407043	23636	6642
19	Gross Value Added	158754	36420	34187	42119	5954	1024
20	Depreciation	16600	7944	5831	5245	1293	308
21	Net Value Added	142155	28476	28356	36874	4661	716
22	Net Fixed Capital Formation	42686	3115	634	-29	1540	-179
23	Gross Fixed Capital Formation	59286	11059	6466	5216	2833	129
24	Addition in Stock of	137893	12484	2341	-1530	1336	-399
	(a) Materials, Fuels etc.	145483	14800	598	1345	471	-55
	(b) Semi Finished Goods	628	-81	760	101	-9	13
	(c) Finished Goods	-8218	-2235	983	-2976	874	-357
25	Gross Capital Formation	197179	23543	8806	3686	4170	-271
26	Income	140048	21814	23180	31030	3896	135
27	Profit	123122	-4124	8878	8927	1437	-675

Table -3 (contd.)

Sl No	Characteristics	269	271	272	273	281	289
1	Number Of Factories	806	84	10	11	57	69
2	Factories In Operation	762	73	9	11	53	69
3	Fixed Capital	37760	46970	11811	484	2181	19322
4	Physical Working Capital	12162	30724	7518	2409	1469	4298
5	Working Capital	10075	2300	1015	-3127	188	8319
6	Invested Capital	49922	77693	19328	2893	3651	23620
7	Gross Value Of Addition To Fixed Capital	5709	5967	1681	31	712	900
8	Rent Paid For Fixed Assets	689	32	10	1	131	86
9	Outstanding Loan	7051	32074	3319	4863	1463	18710
10	Interest Paid	960	5289	1277	202	135	1587
11	Rent Received For Fixed Assets	66	3	2	0	22	6
12	Interest Received	297	256	366	0	1	2
13	Gross Value Of Plant & Machinery	36113	38060	23686	2617	986	34794
14	Value Of Product And By-Product	65942	223641	66694	6143	4019	30283
15	Total Output	67663	225975	69711	6158	12297	33047
16	Fuels Consumed	17635	30195	6354	1511	186	2314
17	Materials Consumed	19917	154167	52061	4005	5338	10119
18	Total Inputs	44160	203117	62024	5706	8972	18236
19	Gross Value Added	23503	22858	7687	452	3325	14811
20	Depreciation	3213	2925	1915	61	240	4977
21	Net Value Added	20290	19933	5772	391	3084	9835
22	Net Fixed Capital Formation	1632	1433	-366	-31	463	-4946
23	Gross Fixed Capital Formation	4845	4358	1549	30	703	31
24	Addition in Stock of	1540	1429	-10127	-226	880	52
	(a) Materials, Fuels etc.	844	-3	-10502	-294	88	319
	(b) Semi Finished Goods	173	34	384	44	633	85
	(c) Finished Goods	523	1398	-9	24	159	-352
25	Gross Capital Formation	6385	5787	-8579	-196	1584	83
26	Income	18642	14611	4486	187	2818	8161
27	Profit	8452	10630	1519	-428	449	1682

Table -3 (contd.)

Sl No	Characteristics	291	292	293	300	311	312	313
1	Number Of Factories	27	57	8	6	17	49	7
2	Factories In Operation	27	57	8	6	13	49	5
3	Fixed Capital	775	2721	629	825	3731	759	526
4	Physical Working Capital	2653	6187	558	805	5610	2881	1456
5	Working Capital	6954	12559	219	3233	7251	3179	559
6	Invested Capital	3427	8907	1187	1630	9341	3640	1981
7	Gross Value Of Addition To Fixed Capital	102	557	310	82	1774	65	50
8	Rent Paid For Fixed Assets	2	25	3	5	38	25	4
9	Outstanding Loan	48	995	500	25	2293	283	1434
10	Interest Paid	14	517	76	227	525	70	520
11	Rent Received For Fixed Assets	3	1	0	0	4	0	0
12	Interest Received	15	28	4	3	1	5	0
13	Gross Value Of Plant & Machinery	1028	3502	174	374	2750	2144	4678
14	Value Of Product And By-Product	6301	23175	3672	4488	30418	13702	5076
15	Total Output	6374	26165	3708	7006	32560	14533	5087
16	Fuels Consumed	109	521	21	42	410	172	111
17	Materials Consumed	4048	15238	2705	3130	20710	9317	3888
18	Total Inputs	4698	19426	3078	5505	24228	11209	4183
19	Gross Value Added	1676	6739	630	1501	8332	3324	904
20	Depreciation	92	359	75	54	214	206	99
21	Net Value Added	1583	6380	555	1447	8118	3117	805
22	Net Fixed Capital Formation	4	169	221	573	1522	-144	-63
23	Gross Fixed Capital Formation	97	529	296	627	1737	62	36
24	Addition in Stock of	772	43	68	74	829	104	474
	(a) Materials, Fuels etc.	620	133	-145	75	-21	-202	6
	(b) Semi Finished Goods	119	48	141	8	196	11	64
	(c) Finished Goods	33	-138	72	-9	654	295	404
25	Gross Capital Formation	869	572	364	701	2566	167	511
26	Income	1567	5838	475	1215	7554	3022	280
27	Profit	556	943	359	235	2252	933	-430

Table -3 (contd.)

Sl No	Characteristics	314	315	319	321	322	323	331
1	Number Of Factories	4	7	4	29	6	28	3
2	Factories In Operation	4	5	4	29	6	27	2
3	Fixed Capital	17	568	3	16093	10042	5514	89
4	Physical Working Capital	25	367	24	15604	2621	2507	15
5	Working Capital	8	10	11	22922	-3911	4605	13
6	Invested Capital	42	935	26	31698	12664	8021	104
7	Gross Value Of Addition To Fixed Capital	12	191	1	6451	208	1956	45
8	Rent Paid For Fixed Assets	1	2	6	298	0	43	2
9	Outstanding Loan	11	198	0	7904	17452	2938	48
10	Interest Paid	4	37	0	1254	3270	357	4
11	Rent Received For Fixed Assets	0	0	0	230	0	10	0
12	Interest Received	0	1	0	29	40	6	0
13	Gross Value Of Plant & Machinery	0	258	0	23040	9073	5090	82
14	Value Of Product And By-Product	124	1926	308	58787	20375	17797	259
15	Total Output	124	1994	308	65508	23079	21180	259
16	Fuels Consumed	3	19	1	1571	180	402	5
17	Materials Consumed	93	1400	221	40747	9077	10131	90
18	Total Inputs	101	1564	233	49543	12730	15381	145
19	Gross Value Added	23	430	75	15965	10349	5799	114
20	Depreciation	0	35	0	1841	298	712	12
21	Net Value Added	24	394	74	14124	10050	5087	102
22	Net Fixed Capital Formation	8	130	0	1542	-369	611	33
23	Gross Fixed Capital Formation	8	165	1	3382	-70	1323	45
24	Addition in Stock of	-2	129	-2	4872	-1263	-76	-1
	(a) Materials, Fuels etc.	-6	140	-6	4388	-993	-115	-1
	(b) Semi Finished Goods	2	-2	0	-290	-270	-110	-1
	(c) Finished Goods	2	-9	4	774	0	149	1
25	Gross Capital Formation	6	294	-2	8255	-1334	1247	44
26	Income	19	355	68	12572	6780	4688	96
27	Profit	13	202	53	6086	4185	2264	16

Table -3 (contd.)

SI No	Characteristics	342	343	351	359	361	369	Other
1	Number Of Factories	11	4	31	4	103	12	273
2	Factories In Operation	11	4	31	4	61	12	273
3	Fixed Capital	212	15	11664	1446	1686	1577	39426
4	Physical Working Capital	177	11	21932	1683	2142	4532	18865
5	Working Capital	240	7	40267	5658	1139	2829	15595
6	Invested Capital	389	26	33597	3128	3828	6109	58292
	Gross Value Of Addition							
7	To Fixed Capital	55	0	3069	71	171	755	1398
8	Rent Paid For Fixed Assets	12	0	111	9	24	66	1031
9	Outstanding Loan	152	0	3293	7131	1015	2098	15119
10	Interest Paid	13	1	438	74	46	214	2964
	Rent Received For Fixed							
11	Assets	0	0	71	0	0	7	13
12	Interest Received	0	0	13	51	0	292	97
	Gross Value Of Plant &							
13	Machinery	57	0	11874	4216	740	748	60463
	Value Of Product And							
14	By-Product	883	6	50164	2810	2882	35260	37199
15	Total Output	1369	14	81273	4004	3164	36094	227662
16	Fuels Consumed	34	1	1827	172	96	89	1637
17	Materials Consumed	918	4	27087	1720	2070	30530	30566
18	Total Inputs	1154	6	48880	2335	2534	33013	203413
19	Gross Value Added	215	8	32393	1669	630	3081	24249
20	Depreciation	20	1	860	207	258	221	6077
21	Net Value Added	195	6	31533	1463	373	2859	18171
	Net Fixed Capital							
22	Formation	20	-1	2151	-135	-87	435	-5045
	Gross Fixed Capital							
23	Formation	40	0	3012	71	171	656	1032
24	Addition in Stock of	12	1	-3038	150	535	374	6387
	(a) Materials, Fuels etc.	-8	1	7323	209	461	211	2654
	(b) Semi Finished Goods	50	4	-10377	241	6	8	-4
	(c) Finished Goods	-30	-4	16	-300	68	155	3737
25	Gross Capital Formation	52	1	-26	222	707	1031	7420
26	Income	171	5	30983	1381	302	2579	14177
27	Profit	15	0	17595	-423	8	2239	5246



**Table -4**  
**Employment and Emoluments at Industry (NIC-04-3 Digit) by State**  
**(Wages in Rs. Lakh, Others in Number)**

SI No	Characteristics	All	151	152	153	154	155
A	No. of Persons Engaged	356147	8278	1590	3554	149909	3315
1	Workers	308641	5327	1155	2619	143714	2617
1.1	Directly Employed	268486	4884	959	1948	142271	1625
	Men	91915	2335	722	1834	8045	991
	Women	176571	2549	237	114	134226	634
	Children	0	0	0	0	0	0
1.2	Employed Through Contractors	40155	444	196	671	1443	992
2	Employees Other Than Workers	45707	2919	435	922	5858	691
2.1	Supervisory and Managerial	24547	1484	211	406	2931	326
2.2	Other Employees	21160	1435	224	516	2927	365
3	Unpaid family members/proprietor etc.	1800	32	0	13	336	7
B	Total Man days Employed (in '000)	91292	2524	546	1077	31420	1018
C	Wages and Salaries Including						
	Employers' Contribution	273127	6508	2516	3075	42992	3386
1	Wages and Salary Including Bonus	227329	5621	2078	2611	38059	2991
1.1	Wages and Salary	209002	5070	2025	2508	32477	2847
1.1.1	Workers	133235	2294	1315	1521	28357	1773
1.1.2	Supervisory & Managerial	50239	1715	457	619	2672	734
1.1.3	Other Employees	25528	1061	253	368	1448	340
1.2	Bonus to All Staff	18327	552	53	103	5582	145
2	Employers' Contribution	45798	887	438	464	4933	395

Table -4 (contd.)

SI No	Characteristics	160	171	172	173	181	191
A	No. Of Persons Engaged	42814	11370	6786	129	7737	475
1	Workers	41631	10017	5612	108	6779	440
1.1	Directly Employed	19190	9973	5184	108	6748	440
	Men	3944	6068	3996	36	2598	201
	Women	15246	3905	1188	72	4150	239
	Children	0	0	0	0	0	0
1.2	Employed Through Contractors	22441	44	428	0	31	0
2	Employees Other Than Workers	1052	1342	1145	20	958	35
2.1	Supervisory and Managerial	666	671	508	10	629	20
2.2	Other Employees	386	671	637	10	329	15
3	Unpaid family members/proprietor etc.	131	11	30	1	1	0
B	Total Man days Employed (in '000)	11184	3581	2006	38	2179	145
C	Wages and Salaries Including Employers' Contribution	7310	10673	4930	82	5868	338
1	Wages and Salary Including Bonus	6579	8014	4036	61	5189	287
1.1	Wages and Salary	5933	7261	3331	58	4949	269
1.1.1	Workers	5511	5630	2422	49	3587	226
1.1.2	Supervisory & Managerial	242	959	534	3	1058	34
1.1.3	Other Employees	180	672	375	6	304	9
1.2	Bonus to All Staff	646	753	705	2	240	18
2	Employers' Contribution	731	2659	894	21	679	51

Table -4 (contd.)

SI No	Characteristics	192	201	202	210	221	222
A	No. Of Persons Engaged	1188	3250	3979	2904	6506	1411
1	Workers	840	2579	3135	2357	2792	1114
1.1	Directly Employed	835	2523	3055	2247	2714	1107
	Men	614	1077	2418	1529	2688	842
	Women	221	1446	637	718	26	265
	Children	0	0	0	0	0	0
1.2	Employed Through Contractors	5	56	80	109	78	7
2	Employees Other Than Workers	322	443	767	523	3715	295
2.1	Supervisory and Managerial	198	201	430	332	1185	141
2.2	Other Employees	124	242	337	191	2530	154
3	Unpaid family members/proprietor etc.	26	228	76	23	0	2
B	Total Man days Employed (in '000)	353	740	1130	940	2182	413
C	Wages and Salaries Including						
	Employers' Contribution	801	1042	2234	2338	16617	1500
1	Wages and Salary Including Bonus	777	981	1965	2088	13697	1330
1.1	Wages and Salary	752	879	1822	1948	13080	1256
1.1.1	Workers	470	651	1276	1502	3901	994
1.1.2	Supervisory & Managerial	184	122	358	352	4033	176
1.1.3	Other Employees	98	106	188	94	5146	86
1.2	Bonus to All Staff	25	102	143	140	618	75
2	Employers' Contribution	24	61	269	250	2920	170

Table -4 (contd.)

SI No	Characteristics	232	241	242	251	252	261
A	No. Of Persons Engaged	4065	7019	9700	15855	3396	649
1	Workers	2996	4849	6748	11780	2626	532
1.1	Directly Employed	1272	4201	5801	10538	2242	460
	Men	1270	4148	4128	9125	1348	431
	Women	2	53	1673	1413	894	29
	Children	0	0	0	0	0	0
1.2	Employed Through Contractors	1724	648	948	1242	384	72
2	Employees Other Than Workers	1069	2169	2948	3971	701	111
2.1	Supervisory and Managerial	701	1389	1299	2239	469	65
2.2	Other Employees	368	780	1649	1732	232	46
3	Unpaid family members/proprietor etc.	1	0	4	103	68	6
B	Total Man days Employed (in '000)	1433	2506	3022	4757	927	227
C	Wages and Salaries Including						
	Employers' Contribution	16925	25938	14302	22102	2459	809
1	Wages and Salary Including Bonus	12647	20526	11970	17993	2100	697
1.1	Wages and Salary	12069	19407	11093	16542	1938	626
1.1.1	Workers	5836	12107	5260	10878	1103	446
1.1.2	Supervisory & Managerial	4403	5361	3273	4029	695	126
1.1.3	Other Employees	1830	1939	2560	1635	140	54
1.2	Bonus to All Staff	578	1119	877	1452	161	71
2	Employers' Contribution	4278	5412	2332	4109	359	112

Table -4 (contd.)

SI No	Characteristics	269	271	272	273	281	289
A	No. Of Persons Engaged	13219	5369	1123	326	2199	3783
1	Workers	10858	4928	922	245	1685	2411
1.1	Directly Employed	10562	1673	747	204	1640	2394
	Men	7723	1669	701	204	1624	2211
	Women	2839	4	46	0	16	183
	Children	0	0	0	0	0	0
1.2	Employed Through Contractors	296	3255	175	41	45	17
2	Employees Other Than Workers	1825	410	199	80	500	1354
2.1	Supervisory and Managerial	1013	175	151	45	394	1150
2.2	Other Employees	812	235	48	35	106	204
3	Unpaid family members/proprietor etc.	536	31	2	1	14	18
B	Total Man days Employed (in '000)	3156	1634	397	100	537	1126
C	Wages and Salaries Including Employers' Contribution	10190	3981	2967	614	2369	6479
1	Wages and Salary Including Bonus	8525	3653	2450	492	2039	5274
1.1	Wages and Salary	7662	3546	2326	475	2011	4736
1.1.1	Workers	5702	3019	1327	242	1554	2058
1.1.2	Supervisory & Managerial	1206	359	903	151	417	2508
1.1.3	Other Employees	754	168	96	82	40	170
1.2	Bonus to All Staff	864	108	123	17	28	539
2	Employers' Contribution	1665	328	517	122	330	1205

Table -4 (contd.)

SI No	Characteristics	291	292	293	300	311	312	313
A	No. Of Persons Engaged	674	2433	205	752	2543	2058	582
1	Workers	385	1727	174	483	1629	1497	490
1.1	Directly Employed	362	1558	147	483	1580	1477	490
	Men	352	1529	84	353	1362	791	451
	Women	10	29	63	130	218	686	39
	Children	0	0	0	0	0	0	0
1.2	Employed Through Contractors	23	169	27	0	49	20	0
2	Employees Other Than Workers	287	691	30	269	914	552	91
2.1	Supervisory and Managerial	161	427	19	130	393	321	48
2.2	Other Employees	126	264	11	139	521	231	43
3	Unpaid family members/proprietor etc.	2	15	1	0	0	9	1
B	Total Man days Employed (in '000)	194	706	56	223	750	596	174
C	Wages and Salaries Including							
	Employers' Contribution	1010	4895	116	979	5303	2089	709
1	Wages and Salary Including Bonus	781	3661	102	792	3979	1669	572
1.1	Wages and Salary	752	3599	98	765	3823	1572	540
1.1.1	Workers	297	2013	52	459	2542	985	434
1.1.2	Supervisory & Managerial	311	1169	42	184	1002	417	74
1.1.3	Other Employees	144	417	4	122	279	170	32
1.2	Bonus to All Staff	29	62	5	27	156	96	33
2	Employers' Contribution	229	1234	14	187	1324	420	137

Table -4 (contd.)

Sl No	Characteristics	314	315	319	321	322	323	331
A	No. Of Persons Engaged	14	185	77	3438	1118	1706	83
1	Workers	11	138	69	2413	780	1332	56
1.1	Directly Employed	11	131	69	2056	674	1083	56
	Men	4	86	0	1157	477	611	49
	Women	7	45	69	899	197	472	7
	Children	0	0	0	0	0	0	0
1.2	Employed Through Contractors	0	7	0	357	106	250	0
	Employees Other Than Workers	2	46	8	1025	338	373	25
2.1	Supervisory and Managerial	1	25	8	853	275	213	2
2.2	Other Employees	1	21	0	172	63	160	23
3	Unpaid family members/proprietor etc.	1	1	0	0	0	1	2
B	Total Man days Employed (in '000)	4	53	22	1053	334	507	24
C	Wages and Salaries Including							
	Employers' Contribution	6	153	15	6487	2594	2424	79
1	Wages and Salary Including Bonus	6	123	14	5363	1748	1977	70
1.1	Wages and Salary	4	118	12	4929	1567	1858	66
1.1.1	Workers	4	68	10	2061	673	999	40
1.1.2	Supervisory & Managerial	0	36	2	2640	816	670	12
1.1.3	Other Employees	0	14	0	228	78	189	14
1.2	Bonus to All Staff	0	6	1	434	180	119	4
2	Employers' Contribution	0	30	1	1124	846	447	9

Table -4 (contd.)

SI No	Characteristics	342	343	351	359	361	369	Other
A	No. Of Persons Engaged	244	17	5725	528	777	545	10549
1	Workers	176	12	4572	336	687	370	7889
1.1	Directly Employed	149	12	1616	326	665	172	7827
	Men	149	4	1612	323	597	79	7327
	Women	0	8	4	3	68	93	500
	Children	0	0	0	0	0	0	0
1.2	Employed Through Contractors	27	0	2956	10	22	198	63
2	Employees Other Than Workers	61	4	1151	192	84	170	2617
2.1	Supervisory and Managerial	34	3	486	107	62	73	1469
2.2	Other Employees	27	1	665	85	22	97	1148
3	Unpaid family members/proprietor etc.	7	1	2	0	7	5	42
B	Total Man days Employed (in '000)	71	5	1562	158	230	151	3123
C	Wages and Salaries Including							
	Employers' Contribution	155	5	13388	1803	294	341	8932
1	Wages and Salary Including Bonus	142	5	12255	1007	255	307	7769
1.1	Wages and Salary	138	4	11453	975	244	300	7292
1.1.1	Workers	99	3	5931	491	172	150	4743
1.1.2	Supervisory & Managerial	28	1	2745	386	60	104	1856
1.1.3	Other Employees	11	0	2777	98	12	46	693
1.2	Bonus to All Staff	3	0	802	31	11	7	479
2	Employers' Contribution	13	0	1133	796	39	34	1163



Table-2  
Capital Employed, Input, Output and GVA in Industry (NIC 4-5 Digit) in 2007  
(Values in Rs. Lakhs/Units in Numbers)

Sl. No.	Industry	2007	2006	2005	2004	2003	2002	2001	2000
1	Number of Enterprises	1400	1400	1400	1400	1400	1400	1400	1400
2	Fixed Capital	100000	100000	100000	100000	100000	100000	100000	100000
3	Working Capital	100000	100000	100000	100000	100000	100000	100000	100000
4	Value Added	100000	100000	100000	100000	100000	100000	100000	100000
5	Output	100000	100000	100000	100000	100000	100000	100000	100000
6	Input	100000	100000	100000	100000	100000	100000	100000	100000
7	...	...	...	...	...	...	...	...	...
8	...	...	...	...	...	...	...	...	...
9	...	...	...	...	...	...	...	...	...
10	...	...	...	...	...	...	...	...	...
11	...	...	...	...	...	...	...	...	...
12	...	...	...	...	...	...	...	...	...
13	...	...	...	...	...	...	...	...	...
14	...	...	...	...	...	...	...	...	...
15	...	...	...	...	...	...	...	...	...
16	...	...	...	...	...	...	...	...	...
17	...	...	...	...	...	...	...	...	...
18	...	...	...	...	...	...	...	...	...
19	...	...	...	...	...	...	...	...	...
20	...	...	...	...	...	...	...	...	...
21	...	...	...	...	...	...	...	...	...
22	...	...	...	...	...	...	...	...	...
23	...	...	...	...	...	...	...	...	...
24	...	...	...	...	...	...	...	...	...
25	...	...	...	...	...	...	...	...	...
26	...	...	...	...	...	...	...	...	...
27	...	...	...	...	...	...	...	...	...
28	...	...	...	...	...	...	...	...	...
29	...	...	...	...	...	...	...	...	...
30	...	...	...	...	...	...	...	...	...
31	...	...	...	...	...	...	...	...	...
32	...	...	...	...	...	...	...	...	...
33	...	...	...	...	...	...	...	...	...
34	...	...	...	...	...	...	...	...	...
35	...	...	...	...	...	...	...	...	...
36	...	...	...	...	...	...	...	...	...
37	...	...	...	...	...	...	...	...	...
38	...	...	...	...	...	...	...	...	...
39	...	...	...	...	...	...	...	...	...
40	...	...	...	...	...	...	...	...	...
41	...	...	...	...	...	...	...	...	...
42	...	...	...	...	...	...	...	...	...
43	...	...	...	...	...	...	...	...	...
44	...	...	...	...	...	...	...	...	...
45	...	...	...	...	...	...	...	...	...
46	...	...	...	...	...	...	...	...	...
47	...	...	...	...	...	...	...	...	...
48	...	...	...	...	...	...	...	...	...
49	...	...	...	...	...	...	...	...	...
50	...	...	...	...	...	...	...	...	...

ANNEXURE III  
ASI DATA - ALL INDIA LEVEL

**Table -5**  
**Capital Employed, Input, Output and GVA at Industry (NIC 04-2 Digit) by State**  
**(Values in Rs. Lakh, Others in Number)**

Sl No	Characteristics	All	01	14	15	16	17
1	Number Of Factories	146385	2988	190	26220	3161	12860
2	Factories In Operation	140568	2749	188	24616	2897	12390
3	Fixed Capital	845132.09	922.34	125.34	68334.84	2317.13	79840.55
4	Physical Working Capital	434993.44	2416.56	129.92	70634.33	2927.25	30015.58
5	Working Capital	316953.06	1479.93	77.28	28828.91	1633.24	18936.93
6	Invested Capital	1280125.5	3338.9	255.26	138969.2	5244.38	109856.1
7	Gross Value Of Addition To Fixed Capital	226611.8	253.73	49.79	19052.28	642.15	22548.21
8	Rent Paid For Fixed Assets	7505.49	12.92	7.39	772.91	55.45	360.7
9	Outstanding Loan	453996.45	1398.39	81.38	56178.45	1038.34	66068.67
10	Interest Paid	51486.88	239.46	24.3	7435.28	113.34	5868.73
11	Rent Received For Fixed Assets	5572.42	8.86	0.25	253.38	10.8	85.12
12	Interest Received	4934.11	23.05	0.61	556.52	21.18	381.65
13	Gross Value Of Plant & Machinery	879207.38	165.29	83.56	61575.1	2658.1	87276.91
14	Value Of Product And By-Product	2470716.5	16835.55	374.33	296657.6	13356.1	141568.5
15	Total Output	2775709	19867.1	492.44	337390.2	14430.74	166216.1
16	Fuels Consumed	129561.7	247.79	29.65	9430.8	201.18	13946.66
17	Materials Consumed	1752887	15618.79	196.13	243210.4	5692.57	99915.69
18	Total Inputs	2222952.8	18569.46	357.56	296798.9	8097.46	136316.3
19	Gross Value Added	552756.22	1297.64	134.88	40591.28	6333.28	29899.79
20	Depreciation	71163.54	99.98	13.15	5589.03	234.39	7198.63
21	Net Value Added	481592.68	1197.66	121.73	35002.25	6098.88	22701.16
22	Net Fixed Capital Formation	106627.43	112.76	36.33	9029	102.45	11286.06
23	Gross Fixed Capital Formation	177790.98	212.74	49.48	14618.03	336.84	18484.7
24	Addition in Stock of	84508.45	406.94	13.64	14824.92	470.68	3798.46
	(a) Materials, Fuels etc.	49527.2	186.84	-7.54	6403.04	421.07	1111.23
	(b) Semi Finished Goods	10602.15	-4.52	2.49	787.46	-10.95	508.36
	(c) Finished Goods	24379.1	224.62	18.69	7634.42	60.56	2178.87
25	Gross Capital Formation	262299.42	619.68	63.13	29442.95	807.52	22283.16
26	Income	422600.31	945.28	90.04	26794.06	5930.09	16471.73
27	Profit	297576	654.65	49.97	15615.73	4674.66	4744.62

Table -5 (contd.)

Sl No	Characteristics	18	19	20	21	22	23
1	Number Of Factories	3653	2688	3197	4096	3326	1054
2	Factories In Operation	3551	2593	2991	4041	3296	1018
3	Fixed Capital	7992.58	4021.64	1783.78	21893.23	9543.28	72013.89
4	Physical Working Capital	7392.36	5025.85	1663.44	5960.3	2497.2	41612.6
5	Working Capital	4739.13	2241.79	1137.73	3283.87	3566.22	24816.13
6	Invested Capital	15384.94	9047.49	3447.21	27853.53	12040.48	113626.5
7	Gross Value Of Addition To Fixed Capital	2548.4	1107.52	530.24	7493.7	3057.34	8324.64
8	Rent Paid For Fixed Assets	436.66	122.02	23.69	83.03	197.29	292.77
9	Outstanding Loan	5956.74	2403.22	1301.11	11563.21	5805.96	6299.87
10	Interest Paid	827.64	497.84	191.81	1456.97	654.18	1119.24
11	Rent Received For Fixed Assets	80.96	15.69	4.07	22.4	69.18	36.57
12	Interest Received	26.36	17.65	6.1	78.52	52.24	95.23
13	Gross Value Of Plant & Machinery	4217.3	2490.51	1239.97	23476.54	7658.44	90213.39
14	Value Of Product And By-Product	29503.59	19932.02	5682.02	34265.75	13405.67	429013.2
15	Total Output	34077.3	23801.26	7192.21	35863.86	22907.52	436659.5
16	Fuels Consumed	787.86	545.42	259.24	4015.76	520.74	5025.24
17	Materials Consumed	16691.1	15464.74	4266.55	21248.97	11652.17	348589.5
18	Total Inputs	25642.82	20563.24	6108.34	28311.26	15867.56	365502.2
19	Gross Value Added	8434.48	3238.02	1083.87	7552.6	7039.96	71157.29
20	Depreciation	740.63	423.12	156.07	1495.33	1014.58	5642.09
21	Net Value Added	7693.85	2814.91	927.8	6057.27	6025.38	65515.19
22	Net Fixed Capital Formation	1138.03	460.53	270.18	3902.21	1089.11	1455.1
23	Gross Fixed Capital Formation	1878.66	883.64	426.25	5397.53	2103.69	7097.19
24	Addition in Stock of	1102.8	26.62	355.52	886.75	192.78	9887.46
	(a) Materials, Fuels etc.	512.12	-43.83	221.8	604.43	119.19	8833.96
	(b) Semi Finished Goods	192.72	133.47	0.19	90.46	28.67	550.65
	(c) Finished Goods	397.96	-63.02	133.53	191.86	44.92	502.85
25	Gross Capital Formation	2981.45	910.26	781.78	6284.29	2296.47	16984.65
26	Income	6429.55	2195.05	712.3	4517.28	5173.9	64103.19
27	Profit	1903.57	697.24	315.69	2352.41	2718.2	61064.73

Table -5 (contd.)

Sl No	Characteristics	24	25	26	27	28
1	Number Of Factories	11177	8187	15850	7782	9872
2	Factories In Operation	10896	7866	15083	7590	9606
3	Fixed Capital	124202.6	23459.36	59221.75	166336.9	22352.2
4	Physical Working Capital	49473.16	10312.3	14607.84	64549.52	19428.76
5	Working Capital	51142.49	10061.5	13501.29	50211.09	14694.1
6	Invested Capital	173675.8	33771.65	73829.59	230886.4	41780.95
7	Gross Value Of Addition To Fixed Capital	25802.95	6992.8	17310.81	43264.18	8847.66
8	Rent Paid For Fixed Assets	799.78	180.76	792.68	468.75	281.01
9	Outstanding Loan	54576.9	18096.96	27322.2	87983.72	13837.02
10	Interest Paid	6785.66	2009.51	2295.72	9010.05	1872.42
11	Rent Received For Fixed Assets	4047.87	72.97	72.28	125.65	77.82
12	Interest Received	444.6	120.37	187.48	1134.56	223.51
13	Gross Value Of Plant & Machinery	151931	24088.41	60070.76	174904.4	16828.7
14	Value Of Product And By-Product	275089.9	73309.37	91084.18	391961.9	83338.02
15	Total Output	301217.6	78660.23	95416.04	417261.4	96439.72
16	Fuels Consumed	19904.91	3801.46	18093.39	37054.02	3095.67
17	Materials Consumed	173440.4	53965.65	32325.78	248410	60213.31
18	Total Inputs	228292.9	64691.41	59140.99	317584.4	77335.01
19	Gross Value Added	72924.67	13968.82	36275.05	99676.96	19104.71
20	Depreciation	11261.77	2345.48	4643.96	11434.79	1944.99
21	Net Value Added	61662.9	11623.34	31631.09	88242.17	17159.72
22	Net Fixed Capital Formation	9872.43	3658.72	9288.45	23775.72	5223.22
23	Gross Fixed Capital Formation	21134.2	6004.2	13932.41	35210.51	7168.21
24	Addition in Stock of	9232.45	1864.96	2759.51	14117.46	6269.05
	(a) Materials, Fuels etc.	7682.8	1010.94	1580.37	7963.11	3288.18
	(b) Semi Finished Goods	1347.45	294.52	420.99	991.18	1682.56
	(c) Finished Goods	202.2	559.5	758.15	5163.17	1298.31
25	Gross Capital Formation	30366.65	7869.16	16691.91	49327.97	13437.25
26	Income	54077.46	9433.07	28542.69	78763.36	15006.29
27	Profit	38631.4	5532.7	22880.66	61914.61	9025.54

Table -5 (contd.)

Sl No	Characteristics	29	30	31	32	33
1	Number Of Factories	9771	174	4294	1060	972
2	Factories In Operation	9584	170	4181	1000	952
3	Fixed Capital	28050.07	3130.71	16450.92	12946.86	3534.61
4	Physical Working Capital	31150.46	1686.33	18825.75	6897.09	2824.39
5	Working Capital	25935.4	7310.47	23072.6	6944.36	4707.25
6	Invested Capital	59200.53	4817.04	35276.67	19843.94	6359
7	Gross Value Of Addition To Fixed Capital	9253.82	695.67	5949.62	3181.51	1134.65
8	Rent Paid For Fixed Assets	639.16	73.52	603.2	195.8	108.23
9	Outstanding Loan	15147.15	7640.36	8838.01	8068.74	2168.19
10	Interest Paid	2130.22	95.95	1851.34	849.56	368.73
11	Rent Received For Fixed Assets	114.36	5.41	47.89	35.62	11.68
12	Interest Received	341.95	2.56	213.4	115.56	40.64
13	Gross Value Of Plant & Machinery	26523.17	4002.65	15587.51	13869.46	3194.83
14	Value Of Product And By-Product	126625.1	8490.22	94730.84	34384.2	14180.43
15	Total Output	143651.5	11747.08	103783.5	43652.08	16955.43
16	Fuels Consumed	2334.31	186.09	1439.45	524.27	240.43
17	Materials Consumed	86878.38	6293.79	67379.8	25726.14	8867.22
18	Total Inputs	111926.6	9563.53	81167.24	35460.01	11842.71
19	Gross Value Added	31724.92	2183.55	22616.23	8192.07	5112.72
20	Depreciation	3058.4	499.33	1558.21	1399.99	390.24
21	Net Value Added	28666.53	1684.22	21058.03	6792.08	4722.49
22	Net Fixed Capital Formation	4604.5	57.29	3585.81	882.03	656.4
23	Gross Fixed Capital Formation	7662.89	556.62	5144.01	2282.02	1046.64
24	Addition in Stock of	5163.03	61.39	4765.17	778.23	169.28
	(a) Materials, Fuels etc.	3283.48	-40.91	2189.88	243.99	37.87
	(b) Semi Finished Goods	1000.36	84.07	1288.73	-94	18.25
	(c) Finished Goods	879.19	18.23	1286.56	628.24	113.16
25	Gross Capital Formation	12825.92	618.01	9909.17	3060.25	1215.92
26	Income	25897.15	1514.75	18603.49	5746.71	4245.52
27	Profit	15549.29	914.67	12661.44	3073.36	2443.61

Table -5 (contd.)

SI No	Characteristics	34	35	36	37	Other
1	Number Of Factories	3310	1862	2517	92	6030
2	Factories In Operation	3263	1681	2411	86	5868
3	Fixed Capital	45742.26	12197.17	4912.49	302.96	53502.58
4	Physical Working Capital	17742.75	7263.83	12629.28	65.56	7261.06
5	Working Capital	2481.8	-2131.26	11428.49	-10.98	6863.31
6	Invested Capital	63485.01	19461	17541.77	368.53	60763.62
7	Gross Value Of Addition To Fixed Capital	22594.85	3642.27	1323.48	143.58	10865.92
8	Rent Paid For Fixed Assets	427.78	205.95	111.64	2.65	249.75
9	Outstanding Loan	20165.9	6337.66	7008	239.26	18471.03
10	Interest Paid	1569.36	664.43	1147.09	18.18	2389.85
11	Rent Received For Fixed Assets	65.62	152.88	96.68	0.47	57.94
12	Interest Received	366.37	161.96	39.77	0.63	281.65
13	Gross Value Of Plant & Machinery	49588.77	11645.19	3040.18	46.03	42831.16
14	Value Of Product And By-Product	149503.7	50417.58	49655.45	220.77	27130.63
15	Total Output	163296.3	55927.62	61279.38	580.58	86942.37
16	Fuels Consumed	3027.92	1063.5	477.07	16.54	3292.36
17	Materials Consumed	111888	36680.04	41050.03	195.62	17026.16
18	Total Inputs	133582.9	44250.5	54188.03	484.25	71307.16
19	Gross Value Added	29713.39	11677.12	7091.35	96.33	15635.21
20	Depreciation	5014.12	1236.48	510.33	29.98	3228.5
21	Net Value Added	24699.27	10440.63	6581.02	66.35	12406.75
22	Net Fixed Capital Formation	12971.55	1677.75	585.75	69.36	836.73
23	Gross Fixed Capital Formation	17985.67	2914.24	1096.08	99.34	4065.2
24	Addition in Stock of	3352.81	1304.63	890.87	19.31	1793.73
	(a) Materials, Fuels etc.	1678.75	652.18	-175.13	16.17	1753.18
	(b) Semi Finished Goods	383.06	691.22	201.59	0.43	12.76
	(c) Finished Goods	1291	-38.77	864.41	2.71	27.79
25	Gross Capital Formation	21338.47	4218.87	1986.96	118.65	5858.93
26	Income	22702.14	9570.25	5322.29	45.52	9767.14
27	Profit	13623.56	6168.07	2905.77	24.61	7435.26

**Table -6**  
**Employment and Emoluments at Industry (NIC-04-2 digit) by State**  
**(wages in Rs.Lakhs, Others in Number)**

Sl No	Characteristics	All	01	14	15	16	17
A	No. of Persons Engaged	10452535	115350	13093	1505246	415509	1460126
1	Workers	8198110	94384	11855	1178602	394869	1243265
1.1	Directly Employed	5659750	58879	4265	834581	110744	1075033
	Men	4539837	37536	3274	574247	53868	884559
	Women	1119777	21343	991	260198	56876	190474
	Children	136	0	0	136	0	0
1.2	Employed Through Contractors	2538360	35505	7590	344021	284126	168232
2	Employees Other Than Workers	2180385	18465	1031	309831	18694	210636
2.1	Supervisory and Managerial	978139	6251	450	106213	6383	96815
2.2	Other Employees	1202246	12214	581	203618	12311	113821
3	Unpaid family members/proprietor etc.	74040	2501	207	16813	1946	6225
B	Total Man days Employed (in '000)	3144881	21439	2691	426403	121222	471249
C	Wages and Salaries Including						
	Employers' Contribution	12502430	29063	4008	1117832	125543	1172711
1	Wages and Salary Including Bonus	10544284	28052	3708	980665	110128	1020017
1.1	Wages and Salary	9984395	27508	3582	921667	102814	957800
1.1.1	Workers	5103023	19205	2782	516075	83442	647033
1.1.2	Supervisory & Managerial	3375002	4742	457	226038	11187	204460
1.1.3	Other Employees	1506370	3561	343	179554	8185	106307
1.2	Bonus to All Staff	559890	544	126	58998	7313	62216
2	Employers' Contribution	1958146	1011	300	137167	15415	152694

Table -6 (contd.)

SI No	Characteristics	18	19	20	21	22	23
A	No. Of Persons Engaged	630253	221706	68024	251382	145104	109010
1	Workers	528055	189554	52385	208732	90235	86273
1.1	Directly Employed	462574	164110	37861	162663	79938	36399
	Men	204769	111051	33636	129297	73853	35331
	Women	257805	53059	4225	33366	6085	1068
	Children	0	0	0	0	0	0
1.2	Employed Through Contractors	65481	25443	14523	46068	10297	49873
2	Employees Other Than Workers	100709	30806	13467	40447	53459	22575
2.1	Supervisory and Managerial	43207	14823	6285	19413	17698	11364
2.2	Other Employees	57502	15983	7182	21034	35761	11211
3	Unpaid family members/proprietor etc.	1489	1347	2173	2203	1411	161
B	Total Man days Employed (in '000)	184509	66277	18829	67369	45996	36891
C	Wages and Salaries Including Employers' Contribution	452599	149781	39662	216487	245570	303846
1	Wages and Salary Including Bonus	397974	129390	35639	184379	209546	241165
1.1	Wages and Salary	375496	120137	33842	173849	201213	226029
1.1.1	Workers	242753	82636	19727	104236	66985	131344
1.1.2	Supervisory & Managerial	90441	25984	9206	47205	71794	70257
1.1.3	Other Employees	42302	11517	4909	22408	62434	24428
1.2	Bonus to All Staff	22478	9253	1797	10529	8332	15136
2	Employers' Contribution	54625	20391	4023	32108	36024	62681



Table -6 (contd.)

SI No	Characteristics	24	25	26	27	28
A	No. Of Persons Engaged	892944	360285	674904	809703	521639
1	Workers	611022	275871	552503	628224	405564
1.1	Directly Employed	403293	213918	254098	390383	233541
	Men	313750	196630	230536	382311	223030
	Women	89543	17288	23562	8072	10511
	Children	0	0	0	0	0
1.2	Employed Through Contractors	207729	61953	298404	237841	172024
2	Employees Other Than Workers	278229	81011	110458	178487	111328
2.1	Supervisory and Managerial	127860	39099	52151	98565	53557
2.2	Other Employees	150369	41912	58307	79922	57771
3	Unpaid family members/proprietor etc.	3692	3402	11943	2991	4746
B	Total Man days Employed (in '000)	281424	111080	181594	268287	157906
C	Wages and Salaries Including					
	Employers' Contribution	1544606	390037	566203	1684875	598074
1	Wages and Salary Including Bonus	1287193	327607	484986	1329473	529339
1.1	Wages and Salary	1218962	308201	459080	1284273	502451
1.1.1	Workers	471355	159356	251964	664480	253010
1.1.2	Supervisory & Managerial	504382	103015	146952	490574	177923
1.1.3	Other Employees	243225	45830	60164	129219	71518
1.2	Bonus to All Staff	68232	19407	25905	45200	26888
2	Employers' Contribution	257413	62430	81217	355402	68735

Table -6 (contd.)

SI No	Characteristics	29	30	31	32	33
A	No. of Persons Engaged	564085	28643	336010	136423	84978
1	Workers	390222	17856	245627	99855	56654
1.1	Directly Employed	286584	11026	164835	58981	49129
	Men	281564	8786	145929	45465	38436
	Women	5020	2240	18906	13516	10693
	Children	0	0	0	0	0
1.2	Employed Through Contractors	103638	6830	80792	40873	7524
2	Employees Other Than Workers	169846	10777	89049	36383	28093
2.1	Supervisory and Managerial	78117	3208	43627	20382	12577
2.2	Other Employees	91729	7569	45422	16001	15516
3	Unpaid family members/proprietor etc.	4016	11	1334	185	232
B	Total Man days Employed (in '000)	169953	8724	102265	40458	25013
C	Wages and Salaries Including					
	Employers' Contribution	1034786	60007	594205	267336	180191
1	Wages and Salary Including Bonus	863927	53000	493188	224766	155825
1.1	Wages and Salary	816944	50584	461042	214183	147553
1.1.1	Workers	335543	14975	196213	79769	49726
1.1.2	Supervisory & Managerial	327228	23931	195164	102303	68098
1.1.3	Other Employees	154173	11678	69665	32111	29729
1.2	Bonus to All Staff	46984	2416	32147	10583	8272
2	Employers' Contribution	170859	7007	101017	42570	24366

Table -6 (contd.)

SI No	Characteristics	34	35	36	37	Other
A	No. of Persons Engaged	466667	205198	217491	2981	215783
1	Workers	364728	161259	173302	2437	134778
1.1	Directly Employed	219639	99509	137906	769	109087
	Men	212090	98184	113485	522	107695
	Women	7549	1325	24421	247	1392
	Children	0	0	0	0	0
1.2	Employed Through Contractors	145089	61750	35396	1668	25689
2	Employees Other Than Workers	100945	43279	43158	483	78736
2.1	Supervisory and Managerial	54043	21314	17882	173	26681
2.2	Other Employees	46902	21965	25276	310	52055
3	Unpaid family members/proprietor etc.	994	659	1031	61	2267
B	Total Man days Employed (in '000)	142603	61449	65002	849	65398
C	Wages and Salaries Including					
	Employers' Contribution	907858	340218	241652	2091	233186
1	Wages and Salary Including Bonus	741592	289982	214507	1926	206308
1.1	Wages and Salary	697120	277677	205074	1895	195424
1.1.1	Workers	350711	148846	126106	1180	83574
1.1.2	Supervisory & Managerial	271406	91836	49821	455	60144
1.1.3	Other Employees	75003	36995	29147	260	51706
1.2	Bonus to All Staff	44473	12305	9433	31	10886
2	Employers' Contribution	166266	50236	27145	165	26878

**Table -7**  
**Capital Employed, Input, Output and GVA at Industry (NIC 04-3 Digit) by State**  
**(Values in Rs Lakh, Others in Number)**

Sl No	Characteristics	All	014	142	151	152	153
1	Number Of Factories	146385	2988	190	3667	1096	13805
2	Factories In Operation	140568	2749	188	3396	1080	12989
3	Fixed Capital	84513209	92234	12534	1222850	371080	846115
4	Physical Working Capital	43499344	241656	12992	1499096	312441	1633003
5	Working Capital	31695306	147993	7728	693190	193335	1158766
6	Invested Capital	128012553	333890	25526	2721947	683521	2479118
7	Gross Value Of Addition To Fixed Capital	22661180	25373	4979	315062	94696	210903
8	Rent Paid For Fixed Assets	750549	1292	739	12484	7702	15018
9	Outstanding Loan	45399645	139839	8138	970268	313961	887264
10	Interest Paid	5148688	23946	2430	146079	30628	169973
11	Rent Received For Fixed Assets	557242	886	25	4358	691	2180
12	Interest Received	493411	2305	61	16548	3844	8032
13	Gross Value Of Plant & Machinery	87920738	16529	8356	1057485	355514	437465
14	Value Of Product And By-Product	247071651	1683555	37433	8991280	3280321	7119955
15	Total Output	277570904	1986710	49244	10743542	3547859	8282904
16	Fuels Consumed	12956170	24779	2965	231576	99018	200842
17	Materials Consumed	175288695	1561879	19613	7926855	2876289	6293507
18	Total Inputs	222295282	1856946	35756	9912332	3270305	7633547
19	Gross Value Added	55275622	129764	13488	831210	277554	649357
20	Depreciation	7116354	9998	1315	99878	45587	83849
21	Net Value Added	48159268	119766	12173	731333	231967	565508
22	Net Fixed Capital Formation	10662743	11276	3633	159883	41355	83201
23	Gross Fixed Capital Formation	17779098	21274	4948	259760	86942	167050
24	Addition in Stock of	8450845	40694	1364	453534	71067	381491
	(a) Materials, Fuels etc.	4952720	18684	-754	293941	31026	261008
	(b) Semi Finished Goods	1060215	-452	249	37782	3671	9601
	(c) Finished Goods	2437910	22462	1869	121811	36370	110882
25	Gross Capital Formation	26229942	61968	6313	713295	158010	548541
26	Income	42260031	94528	9004	572770	193637	380517
27	Profit	29757600	65465	*4997	427647	64997	219811

Table -7 (contd.)

Sl No	Characteristics	154	155	160	171	172	173
1	Number Of Factories	6300	1351	3161	9047	2332	1481
2	Factories In Operation	5863	1287	2897	8713	2232	1445
3	Fixed Capital	3321803	1071635	231713	6915597	564452	504007
4	Physical Working Capital	3234580	384313	292725	2396556	354797	250205
5	Working Capital	477717	359883	163324	1475561	261893	156238
6	Invested Capital	6556383	1455948	524438	9312153	919248	754212
7	Gross Value Of Addition To Fixed Capital	979312	305255	64215	1879350	208473	166998
8	Rent Paid For Fixed Assets	20986	21100	5545	22357	6475	7237
9	Outstanding Loan	2965801	480551	103834	5886221	372854	347792
10	Interest Paid	351705	45143	11334	491768	51006	44098
11	Rent Received For Fixed Assets	5694	12415	1080	6316	1005	1192
12	Interest Received	23145	4083	2118	32248	1987	3930
13	Gross Value Of Plant & Machinery	3355915	951131	265810	7965973	420031	341687
14	Value Of Product And By-Product	7450289	2823915	1335610	11330281	1634474	1192093
15	Total Output	8139956	3024758	1443074	13402371	1810213	1409022
16	Fuels Consumed	292536	119108	20118	1270719	68403	55543
17	Materials Consumed	5788537	1435854	569257	8203327	1076638	711604
18	Total Inputs	6967755	1895952	809746	11050994	1475533	1105100
19	Gross Value Added	1172201	1128806	633328	2351377	334680	303922
20	Depreciation	230801	98789	23439	607162	54462	58239
21	Net Value Added	941400	1030017	609888	1744215	280218	245683
22	Net Fixed Capital Formation	465628	152832	10245	941288	101736	85583
23	Gross Fixed Capital Formation	696429	251621	33684	1548450	156198	143822
24	Addition in Stock of	518222	58177	47068	312560	30165	37122
	(a) Materials, Fuels etc.	40610	13718	42107	78170	15680	17274
	(b) Semi Finished Goods	7928	19765	-1095	41300	4060	5476
	(c) Finished Goods	469684	24694	6056	193090	10425	14372
25	Gross Capital Formation	1214651	309798	80752	1861010	186362	180944
26	Income	568709	963774	593009	1230090	222736	194347
27	Profit	23477	825641	467466	319177	83747	71537

Table -7 (contd.)

Sl No	Characteristics	181	182	191	192	201	202
1	Number Of Factories	3589	64	1281	1408	1285	1912
2	Factories In Operation	3486	64	1246	1346	1133	1858
3	Fixed Capital	785114	14144	169679	232485	6697	171681
4	Physical Working Capital	730063	9173	247525	255060	23817	142527
5	Working Capital	467315	6598	89057	135122	16474	97299
6	Invested Capital	1515177	23317	417204	487545	30514	314207
7	Gross Value Of Addition To Fixed Capital	246053	8787	34977	75776	816	52208
8	Rent Paid For Fixed Assets	43392	274	4733	7468	214	2155
9	Outstanding Loan	585398	10275	124499	115823	10068	120043
10	Interest Paid	81859	905	22623	27161	1874	17307
11	Rent Received For Fixed Assets	8075	21	695	873	94	312
12	Interest Received	2620	16	1034	730	102	509
13	Gross Value Of Plant & Machinery	415701	6028	93622	155429	463	123534
14	Value Of Product And By-Product	2904728	45631	848760	1144442	73493	494709
15	Total Output	3348610	59121	960613	1419514	110334	608887
16	Fuels Consumed	73481	5304	23041	31500	1568	24357
17	Materials Consumed	1627615	41495	677188	869286	61082	365573
18	Total Inputs	2512721	51561	842217	1214108	100352	510482
19	Gross Value Added	835889	7560	118396	205406	9982	98405
20	Depreciation	73071	992	16034	26277	656	14951
21	Net Value Added	762818	6568	102362	179129	9325	83455
22	Net Fixed Capital Formation	103533	10270	14127	31925	-47	27065
23	Gross Fixed Capital Formation	176603	11262	30162	58203	610	42015
24	Addition in Stock of	108165	2115	11081	-8420	4589	30964
	(a) Materials, Fuels etc.	51053	160	3581	-7964	3373	18807
	(b) Semi Finished Goods	18508	764	15281	-1934	-4	24
	(c) Finished Goods	38604	1191	-7781	1478	1220	12133
25	Gross Capital Formation	284768	13377	41243	49783	5198	72980
26	Income	637566	5389	75006	144499	7237	63993
27	Profit	188150	2207	22573	47151	3428	28141

Table -7 (contd.)

Sl No	Characteristics	210	221	222	223	231	232
1	Number Of Factories	4096	790	2516	21	530	524
2	Factories In Operation	4041	790	2487	19	502	516
3	Fixed Capital	2189323	570384	373029	10916	272228	6929161
4	Physical Working Capital	596030	130984	117554	1182	213371	3947888
5	Working Capital	328387	203841	140822	11959	267275	2214338
6	Invested Capital	2785353	701368	490583	12097	485600	10877049
7	Gross Value Of Addition To Fixed Capital	749370	203898	97295	4541	63453	769011
8	Rent Paid For Fixed Assets	8303	13891	5455	384	9611	19666
9	Outstanding Loan	1156321	294003	282456	4137	122300	507687
10	Interest Paid	145697	30895	34245	278	18650	93273
11	Rent Received For Fixed Assets	2240	5839	1070	8	641	3016
12	Interest Received	7852	3842	1373	8	1732	7791
13	Gross Value Of Plant & Machinery	2347654	460991	286990	17863	316804	8704536
14	Value Of Product And By-Product	3426575	669844	654049	16675	943381	41957934
15	Total Output	3586386	1407625	848076	35052	1153567	42512385
16	Fuels Consumed	401576	26896	24165	1013	31668	470856
17	Materials Consumed	2124897	667396	490283	7538	648232	34210717
18	Total Inputs	2831126	928418	634155	24184	870650	35679574
19	Gross Value Added	755260	479207	213921	10868	282917	6832811
20	Depreciation	149533	58194	41322	1943	25748	538461
21	Net Value Added	605727	421013	172599	8926	257169	6294351
22	Net Fixed Capital Formation	390221	76362	34257	-1709	29019	116490
23	Gross Fixed Capital Formation	539753	134556	75579	234	54768	654952
24	Addition in Stock of	88675	6630	18906	-6258	21062	967684
	(a) Materials, Fuels etc.	60443	3132	13165	-4378	21662	861734
	(b) Semi Finished Goods	9046	464	2813	-410	2201	52864
	(c) Finished Goods	19186	3034	2928	-1470	-2801	53086
25	Gross Capital Formation	628429	141186	94485	-6024	75829	1622635
26	Income	451728	376227	132899	8264	228908	6181411
27	Profit	235241	206562	59841	5417	181343	5925131

Table -7 (contd.)

SI No	Characteristics	241	242	243	251	252	261
1	Number Of Factories	2922	8209	46	2064	6123	616
2	Factories In Operation	2814	8037	45	1957	5909	583
3	Fixed Capital	6845414	5098095	476753	840523	1505413	608367
4	Physical Working Capital	1949426	2858968	138922	345469	685760	167648
5	Working Capital	1780634	3202008	131608	260827	745322	171672
6	Invested Capital	8794840	7957063	615675	1185992	2191174	776015
7	Gross Value Of Addition To Fixed Capital	1024503	1526992	28801	224373	474906	122586
8	Rent Paid For Fixed Assets	35762	42630	1586	5790	12286	3285
9	Outstanding Loan	2460414	2903021	94256	401657	1408040	282657
10	Interest Paid	317604	353056	7907	45431	155520	28482
11	Rent Received For Fixed Assets	8481	396063	243	4764	2533	303
12	Interest Received	20413	23225	821	1603	10434	1314
13	Gross Value Of Plant & Machinery	9917459	4079903	1195739	906066	1502775	726154
14	Value Of Product And By-Product	13732115	13051375	725499	2586643	4744294	710055
15	Total Output	14536391	14846806	738564	2765237	5100785	764572
16	Fuels Consumed	1402413	506395	81682	146324	233822	149958
17	Materials Consumed	8909434	7923540	511066	1802993	3593572	320206
18	Total Inputs	11522538	10680129	626627	2179198	4289943	558312
19	Gross Value Added	3013853	4166677	111937	586039	810842	206260
20	Depreciation	649155	413398	63625	88585	145963	54610
21	Net Value Added	2364698	3753279	48313	497455	664879	151650
22	Net Fixed Capital Formation	215451	814186	-42394	108760	257112	47221
23	Gross Fixed Capital Formation	864605	1227584	21231	197344	403076	101831
24	Addition in Stock of	327279	574714	21253	43667	142827	18987
	(a) Materials, Fuels etc.	320380	426884	21016	22144	78949	8384
	(b) Semi Finished Goods	28759	107330	-1344	7079	22372	1262
	(c) Finished Goods	-21860	40500	1581	14444	41506	9341
25	Gross Capital Formation	1191884	1802297	42483	241012	545904	120818
26	Income	2011332	3357594	38820	446235	497072	119883
27	Profit	1491711	2382311	-10883	268583	284687	61354



Table -7 (contd.)

SI No	Characteristics	269	271	272	273	281	289
1	Number Of Factories	15234	4098	1277	2407	2901	6972
2	Factories In Operation	14500	3992	1237	2360	2809	6797
3	Fixed Capital	5313808	13573044	2329948	730700	1020880	1214340
4	Physical Working Capital	1293136	4890675	1180895	383382	1119808	823067
5	Working Capital	1178457	3830314	928574	262221	828032	641378
6	Invested Capital	6606944	18463718	3510844	1114082	2140688	2037407
7	Gross Value Of Addition To Fixed Capital	1608495	3536707	474541	315170	479935	404831
8	Rent Paid For Fixed Assets	75984	33919	8628	4328	16219	11883
9	Outstanding Loan	2449563	7570164	794102	434106	672472	711230
10	Interest Paid	201090	742020	105532	53453	82653	104589
11	Rent Received For Fixed Assets	6925	10425	1392	749	4502	3279
12	Interest Received	17434	57592	53456	2407	14755	7597
13	Gross Value Of Plant & Machinery	5280922	14124940	2760819	604685	664831	1018039
14	Value Of Product And By-Product	8398363	30151947	6933308	2110933	4203568	4130233
15	Total Output	8777031	32303458	7160694	2261984	4854609	4789363
16	Fuels Consumed	1659381	2925271	529455	250676	80003	229564
17	Materials Consumed	2912371	18661744	4816805	1362450	3094860	2926471
18	Total Inputs	5355786	24213516	5662266	1882659	3849664	3883837
19	Gross Value Added	3421245	8089942	1498428	379325	1004945	905526
20	Depreciation	409786	900937	179318	63224	65784	128715
21	Net Value Added	3011460	7189005	1319110	316102	939162	776810
22	Net Fixed Capital Formation	881624	2030525	188378	158668	323572	198749
23	Gross Fixed Capital Formation	1291409	2931462	367697	221892	389356	327465
24	Addition in Stock of	256964	1157542	174947	79257	449474	177431
	(a) Materials, Fuels etc.	149653	650760	111741	33810	244837	83981
	(b) Semi Finished Goods	40837	47666	25162	26290	113623	54633
	(c) Finished Goods	66474	459116	38044	19157	91014	38817
25	Gross Capital Formation	1548373	4089004	542643	301149	838830	504895
26	Income	2734386	6413067	1204950	258320	840290	660338
27	Profit	2226712	5103628	990167	97666	566103	336452

Table -7 (contd.)

Sl No	Characteristics	291	292	293	300	311	312
1	Number Of Factories	4149	4937	685	174	1144	1197
2	Factories In Operation	4057	4868	659	170	1102	1157
3	Fixed Capital	1216881	1334272	253853	313071	515548	296214
4	Physical Working Capital	1687997	1278766	148283	168633	940969	315459
5	Working Capital	1398381	1076572	118588	731047	1125353	441670
6	Invested Capital	2904879	2613038	402136	481704	1456516	611673
7	Gross Value Of Addition To Fixed Capital	395463	426521	103398	69567	224450	103668
8	Rent Paid For Fixed Assets	41880	20213	1824	7352	44225	6596
9	Outstanding Loan	671884	734349	108483	764036	204776	131573
10	Interest Paid	93962	104187	14873	9595	78668	20871
11	Rent Received For Fixed Assets	6056	4575	805	541	1603	604
12	Interest Received	17084	16528	583	256	9141	5095
13	Gross Value Of Plant & Machinery	1232378	1162204	257734	400265	424461	230881
14	Value Of Product And By-Product	6003226	5818470	840809	849022	3754665	2057640
15	Total Output	6836824	6651381	876946	1174708	4059370	2340466
16	Fuels Consumed	123544	98500	11387	18609	29934	22136
17	Materials Consumed	3909070	4155679	623089	629379	2521653	1387027
18	Total Inputs	5225565	5267869	699224	956353	3024679	1778013
19	Gross Value Added	1611259	1383512	177722	218355	1034691	562453
20	Depreciation	139026	141396	25418	49933	42071	35314
21	Net Value Added	1472233	1242116	152304	168422	992619	527139
22	Net Fixed Capital Formation	173305	214217	72928	5729	141138	53456
23	Gross Fixed Capital Formation	312331	355613	98346	55662	183209	88769
24	Addition in Stock of	223817	262558	29926	6139	264556	40749
	(a) Materials, Fuels etc.	167527	138127	22693	-4091	109925	19188
	(b) Semi Finished Goods	29724	67695	2617	8407	78545	8093
	(c) Finished Goods	26566	56736	4616	1823	76086	13468
25	Gross Capital Formation	536148	618171	128272	61801	447766	129519
26	Income	1336391	1117715	135608	151475	869726	499673
27	Profit	860499	598649	95781	91467	614625	346749

Table -7 (contd.)

Sl No	Characteristics	313	314	315	319	321	322
1	Number Of Factories	669	251	387	646	621	232
2	Factories In Operation	648	248	385	641	580	230
3	Fixed Capital	356915	170338	121611	184465	382477	447666
4	Physical Working Capital	313427	129352	69905	113463	178672	184984
5	Working Capital	385507	121237	79209	154284	255630	149162
6	Invested Capital	670343	299690	191516	297928	561149	632650
7	Gross Value Of Addition To Fixed Capital	99726	56164	27840	83114	102100	121099
8	Rent Paid For Fixed Assets	3266	1903	1127	3203	6306	3931
9	Outstanding Loan	232963	106726	51124	156640	212371	212108
10	Interest Paid	51138	11841	8339	14278	20682	34496
11	Rent Received For Fixed Assets	824	49	137	1573	992	2243
12	Interest Received	5055	1286	242	522	2940	4862
13	Gross Value Of Plant & Machinery	392770	202013	160448	148178	510623	252757
14	Value Of Product And By-Product	1951820	673527	388008	647424	900519	928711
15	Total Output	2081401	704930	425116	767065	1038260	1208650
16	Fuels Consumed	39119	21949	17157	13649	25140	10529
17	Materials Consumed	1606283	469374	256547	497097	626318	665788
18	Total Inputs	1792772	549079	329462	642719	769527	921972
19	Gross Value Added	288629	155851	95654	124346	268733	286678
20	Depreciation	29789	16914	13640	18093	48684	34909
21	Net Value Added	258840	138938	82013	106253	220049	251768
22	Net Fixed Capital Formation	59967	34034	9834	60153	17738	40892
23	Gross Fixed Capital Formation	89756	50947	23474	78246	66422	75802
24	Addition in Stock of	87421	46862	16273	20654	26150	16568
	(a) Materials, Fuels etc.	41358	22806	10644	15066	14503	19254
	(b) Semi Finished Goods	20175	12228	1745	8087	5760	-15327
	(c) Finished Goods	25888	11828	3884	-2499	5887	12641
25	Gross Capital Formation	177176	97810	39746	98900	92572	92369
26	Income	204436	125194	72548	88772	193061	213342
27	Profit	135012	88242	39940	41577	78861	128273

Table -7 (contd.)

Sl No	Characteristics	323	331	332	333	341
1	Number Of Factories	207	737	109	126	142
2	Factories In Operation	191	726	107	119	140
3	Fixed Capital	464543	269488	57166	26807	2480336
4	Physical Working Capital	326052	224745	30835	26859	950561
5	Working Capital	289644	404403	45956	20366	-390604
6	Invested Capital	790595	494233	88001	53666	3430897
7	Gross Value Of Addition To Fixed Capital	94952	87393	21290	4782	1485088
8	Rent Paid For Fixed Assets	9343	7653	2279	891	16597
9	Outstanding Loan	382396	145384	13403	58032	1006089
10	Interest Paid	29779	23860	2761	10253	42800
11	Rent Received For Fixed Assets	326	939	40	190	2541
12	Interest Received	3754	1198	2424	441	25438
13	Gross Value Of Plant & Machinery	623567	209545	61132	48806	2747744
14	Value Of Product And By-Product	1609190	1213515	81931	122597	8955333
15	Total Output	2118298	1444236	115536	135771	9719144
16	Fuels Consumed	16757	19121	2590	2332	97510
17	Materials Consumed	1280509	791264	39150	56307	7060623
18	Total Inputs	1854502	1043771	70438	70062	8140327
19	Gross Value Added	263796	400465	45098	65709	1578817
20	Depreciation	56406	29601	5949	3473	243779
21	Net Value Added	207390	370864	39149	62236	1335038
22	Net Fixed Capital Formation	29572	57255	11050	-2664	899244
23	Gross Fixed Capital Formation	85978	86856	16999	809	1143022
24	Addition in Stock of	35106	11286	4432	1210	166979
	(a) Materials, Fuels etc.	-9358	255	4417	-885	67889
	(b) Semi Finished Goods	168	2088	-658	396	5375
	(c) Finished Goods	44296	8943	673	1699	93715
25	Gross Capital Formation	121084	98142	21430	2019	1310001
26	Income	168268	339351	34109	51093	1275642
27	Profit	100201	192347	22347	29667	893822

Table -7 (contd.)

SI No	Characteristics	342	343	351	352	353
1	Number Of Factories	334	2834	201	275	55
2	Factories In Operation	319	2804	174	273	55
3	Fixed Capital	71402	2022488	218222	61601	60711
4	Physical Working Capital	40739	782975	298668	69880	26012
5	Working Capital	19797	618986	60861	44469	35053
6	Invested Capital	112141	2805463	516890	131481	86723
7	Gross Value Of Addition To Fixed Capital	18869	755528	82469	17918	24497
8	Rent Paid For Fixed Assets	736	25445	4550	1513	7678
9	Outstanding Loan	40452	970049	161251	62999	20784
10	Interest Paid	5615	108521	16084	7694	911
11	Rent Received For Fixed Assets	167	3854	2058	152	12376
12	Interest Received	384	10815	7223	1413	136
13	Gross Value Of Plant & Machinery	37753	2173380	56306	54739	18303
14	Value Of Product And By-Product	278286	5716755	401492	374591	20767
15	Total Output	299591	6310898	586592	440582	73698
16	Fuels Consumed	5878	199404	5568	9184	3853
17	Materials Consumed	209161	3919017	291040	260778	28367
18	Total Inputs	243249	4974717	451481	340688	49113
19	Gross Value Added	56342	1336181	135111	99894	24585
20	Depreciation	5472	252161	6196	6059	4891
21	Net Value Added	50870	1084019	128915	93835	19694
22	Net Fixed Capital Formation	8882	389029	75211	7810	18461
23	Gross Fixed Capital Formation	14354	641190	81406	13869	23352
24	Addition in Stock of	5775	162527	106940	13235	-2734
	(a) Materials, Fuels etc.	2985	97001	42920	6695	-4286
	(b) Semi Finished Goods	1987	30944	64018	1707	974
	(c) Finished Goods	803	34582	2	4833	578
25	Gross Capital Formation	20129	803717	188346	27103	20618
26	Income	44518	950054	108281	84628	11105
27	Profit	18293	450241	64175	50185	-11823

Table -7 (contd.)

Sl No	Characteristics	359	361	369	371	372	Others
1	Number Of Factories	1331	751	1766	20	71	6030
2	Factories In Operation	1179	699	1712	16	70	5868
3	Fixed Capital	879184	111522	379727	3685	26612	5350257
4	Physical Working Capital	331823	108016	1154912	2181	4375	726104
5	Working Capital	-353509	71866	1070983	1795	-2892	686331
6	Invested Capital	1211006	219538	1534639	5865	30987	6076362
7	Gross Value Of Addition To Fixed Capital	239343	40013	92335	426	13933	1086593
8	Rent Paid For Fixed Assets	6855	2450	8714	89	176	24974
9	Outstanding Loan	388731	62459	638341	906	23020	1847104
10	Interest Paid	41754	13831	100878	232	1586	238985
11	Rent Received For Fixed Assets	702	8593	1075	1	46	5792
12	Interest Received	7425	426	3552	59	3	28163
13	Gross Value Of Plant & Machinery	1035171	99447	204571	2875	1729	4283115
14	Value Of Product And By-Product	4244909	421500	4544045	6696	15382	2713062
15	Total Output	4491890	500363	5627575	30616	27442	8694238
16	Fuels Consumed	87745	16377	31330	501	1153	329237
17	Materials Consumed	3087820	296801	3808202	6404	13158	1702614
18	Total Inputs	3583768	407831	5010973	29057	19368	7130718
19	Gross Value Added	908122	92532	616602	1559	8074	1563520
20	Depreciation	106502	11737	39296	352	2646	322850
21	Net Value Added	801620	80795	577307	1208	5428	1240675
22	Net Fixed Capital Formation	66294	17879	40697	69	6867	83673
23	Gross Fixed Capital Formation	172796	29616	79993	420	9513	406519
24	Addition in Stock of	13023	24917	64169	692	1240	179375
	(a) Materials, Fuels etc.	19890	953	-18467	642	976	175320
	(b) Semi Finished Goods	2423	9103	11056	-1	44	1276
	(c) Finished Goods	-9290	14861	71580	51	220	2779
25	Gross Capital Formation	185819	54533	144163	1112	10753	585893
26	Income	753010	64515	467714	887	3665	976715
27	Profit	514270	13517	277061	327	2134	743527

**Table -8**  
**Employment and Emoluments at Industry (NIC-04-3 Digit) by State**  
**(Wages in Rs. Lakh, Others in Number)**

SI No	Characteristics	All	014	142	151	152	153
A	No. Of Persons Engaged	10452535	115350	13093	200806	94018	354833
1	Workers	8198110	94384	11855	156442	65880	270573
1.1	Directly Employed	5659750	58879	4265	87167	41963	154935
	Men	4539837	37536	3274	68123	39624	132838
	Women	1119777	21343	991	19044	2339	22097
	Children	136	0	0	0	0	0
1.2	Employed Through Contractors	2538360	35505	7590	69274	23917	115638
2	Employees Other Than Workers	2180385	18465	1031	42552	27899	72937
2.1	Supervisory and Managerial	978139	6251	450	18343	10193	26239
2.2	Other Employees	1202246	12214	581	24209	17706	46698
3	Unpaid family members/proprietor etc.	74040	2501	207	1813	240	11324
B	Total Man days Employed (in '000)	3144881	21439	2691	59656	33028	89151
C	Wages and Salaries Including						
	Employers' Contribution	12502430	29063	4008	145122	128640	160706
1	Wages and Salary Including Bonus	10544284	28052	3708	129835	109969	147378
1.1	Wages and Salary	9984395	27508	3582	122766	105523	140810
1.1.1	Workers	5103023	19205	2782	67014	51548	86095
1.1.2	Supervisory & Managerial	3375002	4742	457	36524	27922	29233
1.1.3	Other Employees	1506370	3561	343	19228	26053	25482
1.2	Bonus to All Staff	559890	544	126	7070	4446	6568
2	Employers' Contribution	1958146	1011	300	15287	18671	13328

Table -8 (contd.)

Sl No	Characteristics	154	155	160	171	172	173
A	No. of Persons Engaged	737186	118403	415509	1107894	164346	187886
1	Workers	595029	90679	394869	952234	132717	158314
1.1	Directly Employed	506696	43819	110744	826767	106435	141831
	Men	294649	39012	53868	698628	92306	93625
	Women	211911	4807	56876	128139	14129	48206
	Children	136	0	0	0	0	0
1.2	Employed Through Contractors	88332	46860	284126	125467	26282	16483
2	Employees Other Than Workers	139175	27269	18694	151472	30381	28783
2.1	Supervisory and Managerial	40200	11238	6383	70600	13609	12606
2.2	Other Employees	98975	16031	12311	80872	16772	16177
3	Unpaid family members/proprietor etc.	2982	455	1946	4188	1247	790
B	Total Man days Employed (in '000)	207996	36571	121222	364590	49758	56901
C	Wages and Salaries Including Employers' Contribution	545232	138133	125543	910912	138989	122810
1	Wages and Salary Including Bonus	472539	120944	110128	785352	123552	111113
1.1	Wages and Salary	437333	115237	102814	738409	116560	102831
1.1.1	Workers	255106	56313	83442	507113	71545	68375
1.1.2	Supervisory & Managerial	93250	39110	11187	154715	29287	20458
1.1.3	Other Employees	88977	19814	8185	76581	15728	13998
1.2	Bonus to All Staff	35206	5708	7313	46943	6991	8282
2	Employers' Contribution	72693	17189	15415	125560	15437	11697



Table -8 (contd.)

Sl No	Characteristics	181	182	191	192	201	202
A	No. of Persons Engaged	625905	4348	72114	149592	11012	57011
1	Workers	524346	3709	58001	131553	7905	44479
1.1	Directly Employed	460540	2034	47986	116126	6844	31017
	Men	203257	1512	39776	71276	4774	28862
	Women	257283	522	8210	44850	2070	2155
	Children	0	0	0	0	0	0
1.2	Employed Through Contractors	63806	1676	10015	15428	1062	13462
2	Employees Other Than Workers	100083	626	13589	17217	2047	11420
2.1	Supervisory and Managerial	42833	374	6792	8031	995	5290
2.2	Other Employees	57250	252	6797	9186	1052	6130
3	Unpaid family members/proprietor etc.	1476	13	525	822	1061	1112
B	Total Man days Employed (in '000)	183186	1322	21818	44459	2701	16128
C	Wages and Salaries Including						
	Employers' Contribution	449417	3182	52433	97348	3810	35852
1	Wages and Salary Including Bonus	395090	2884	44975	84415	3615	32024
1.1	Wages and Salary	372720	2776	41424	78713	3433	30408
1.1.1	Workers	240958	1795	25458	57178	2307	17420
1.1.2	Supervisory & Managerial	89657	784	11215	14769	559	8646
1.1.3	Other Employees	42105	197	4751	6766	567	4342
1.2	Bonus to All Staff	22370	108	3550	5703	181	1616
2	Employers' Contribution	54327	298	7458	12933	195	3828

Table -8 (contd.)

SI No	Characteristics	210	221	222	223	231	232
A	No. Of Persons Engaged	251382	66859	76398	1848	32887	76123
1	Workers	208732	30840	58187	1207	26238	60035
1.1	Directly Employed	162663	26841	52153	943	17754	18645
	Men	129297	26296	46919	638	16891	18440
	Women	33366	545	5234	305	863	205
	Children	0	0	0	0	0	0
1.2	Employed Through Contractors	46068	3999	6034	264	8484	41389
2	Employees Other Than Workers	40447	35833	16986	640	6544	16032
2.1	Supervisory and Managerial	19413	10029	7431	238	2322	9043
2.2	Other Employees	21034	25804	9555	402	4222	6989
3	Unpaid family members/proprietor etc.	2203	185	1225	1	104	57
B	Total Man days Employed (in '000)	67369	22899	22537	559	10607	26284
C	Wages and Salaries Including						
	Employers' Contribution	216487	169665	73058	2847	47565	256281
1	Wages and Salary Including Bonus	184379	144217	63086	2243	38502	202663
1.1	Wages and Salary	173849	139669	59533	2011	36636	189393
1.1.1	Workers	104236	34311	31943	731	24448	106896
1.1.2	Supervisory & Managerial	47205	53340	17680	774	7332	62925
1.1.3	Other Employees	22408	52018	9910	506	4856	19572
1.2	Bonus to All Staff	10529	4548	3553	231	1866	13270
2	Employers' Contribution	32108	25448	9972	604	9063	53618

Table -8 (contd.)

SI No	Characteristics	241	242	243	251	252	261
A	No. Of Persons Engaged	208375	668319	16250	131986	228299	50294
1	Workers	140368	457571	13084	103663	172208	40272
1.1	Directly Employed	83098	309876	10320	81395	132523	26897
	Men	81176	222327	10248	75288	121342	25987
	Women	1922	87549	72	6107	11181	910
	Children	0	0	0	0	0	0
1.2	Employed Through Contractors	57269	147696	2764	22268	39685	13375
2	Employees Other Than Workers	67239	207830	3160	27532	53480	9667
2.1	Supervisory and Managerial	36984	89066	1810	13429	25671	4769
2.2	Other Employees	30255	118764	1350	14103	27809	4898
3	Unpaid family members/proprietor etc.	768	2918	6	791	2611	355
B	Total Man days Employed (in '000)	70593	204961	5870	41794	69287	15953
C	Wages and Salaries Including						
	Employers' Contribution	519620	975282	49702	177652	212386	58528
1	Wages and Salary Including Bonus	420075	829652	37465	142344	185264	49858
1.1	Wages and Salary	400686	783153	35121	134016	174184	46669
1.1.1	Workers	185155	265164	21036	78736	80620	26490
1.1.2	Supervisory & Managerial	159226	334226	10929	38324	64691	13669
1.1.3	Other Employees	56305	183763	3156	16956	28873	6510
1.2	Bonus to All Staff	19389	46499	2344	8328	11079	3189
2	Employers' Contribution	99545	145630	12237	35308	27122	8670

Table -8 (contd.)

SI No	Characteristics	269	271	272	273	281	289
A	No. Of Persons Engaged	624611	564208	88356	157139	206233	315406
1	Workers	512231	435950	66014	126260	157948	247616
1.1	Directly Employed	227201	267717	45035	77633	70553	162988
	Men	204549	263488	43661	75163	69227	153803
	Women	22652	4229	1374	2470	1326	9185
	Children	0	0	0	0	0	0
1.2	Employed Through Contractors	285029	168234	20980	48627	87396	84628
2	Employees Other Than Workers	100791	126805	21717	29966	47257	64071
2.1	Supervisory and Managerial	47382	70912	11017	16637	23916	29641
2.2	Other Employees	53409	55893	10700	13329	23341	34430
3	Unpaid family members/proprietor etc.	11589	1453	625	913	1027	3719
B	Total Man days Employed (in '000)	165640	191049	28832	48406	63593	94314
C	Wages and Salaries Including Employers' Contribution	507673	1309439	214782	160655	274188	323886
1	Wages and Salary Including Bonus	435127	1018308	172675	138491	246727	282612
1.1	Wages and Salary	412411	989825	163703	130745	235969	266481
1.1.1	Workers	225473	493626	96276	74578	110781	142228
1.1.2	Supervisory & Managerial	133284	401750	47064	41759	89678	88245
1.1.3	Other Employees	53654	94449	20363	14408	35510	36008
1.2	Bonus to All Staff	22716	28483	8972	7745	10758	16131
2	Employers' Contribution	72546	291131	42107	22164	27461	41274

Table -8 (contd.)

Sl No	Characteristics	291	292	293	300	311	312	313
A	No. Of Persons Engaged	249862	279015	35207	28643	106260	93206	43795
1	Workers	165773	197215	27233	17856	73815	68075	32989
1.1	Directly Employed	118842	150039	17702	11026	51052	44169	21304
	Men	117582	148088	15893	8786	48635	37380	20432
	Women	1260	1951	1809	2240	2417	6789	872
	Children	0	0	0	0	0	0	0
1.2	Employed Through Contractors	46931	47177	9531	6830	22763	23906	11685
2	Employees Other Than Workers	82535	79624	7688	10777	32065	24764	10648
2.1	Supervisory and Managerial	38280	36365	3472	3208	14434	13282	5419
2.2	Other Employees	44255	43259	4216	7569	17631	11482	5229
3	Unpaid family members/proprietor etc.	1554	2176	286	11	379	368	158
B	Total Man days Employed (in '000)	74668	84798	10487	8724	32494	28131	13425
C	Wages and Salaries Including							
	Employers' Contribution	475892	519067	39827	60007	255102	152924	69424
1	Wages and Salary Including Bonus	401935	428167	33825	53000	207040	129642	58157
1.1	Wages and Salary	381822	403116	32006	50584	191646	121627	54756
1.1.1	Workers	151661	168237	15645	14975	75039	50536	24334
1.1.2	Supervisory & Managerial	157755	158204	11269	23931	84731	54414	23902
1.1.3	Other Employees	72406	76675	5092	11678	31876	16677	6520
1.2	Bonus to All Staff	20114	25051	1819	2416	15393	8015	3401
2	Employers' Contribution	73957	90900	6002	7007	48062	23282	11267

Table -8 (contd.)

Sl No	Characteristics	314	315	319	321	322	323	331
A	No. Of Persons Engaged	23145	31469	38135	69705	40140	26578	64535
1	Workers	16353	25694	28701	51470	29500	18885	41529
1.1	Directly Employed	11879	16687	19743	31536	14484	12962	35469
	Men	10875	12139	16467	22237	11779	11449	29977
	Women	1004	4548	3276	9299	2705	1513	5492
	Children	0	0	0	0	0	0	0
1.2	Employed Through Contractors	4473	9006	8958	19934	15016	5924	6060
2	Employees Other Than Workers	6703	5644	9226	18152	10589	7643	22875
2.1	Supervisory and Managerial	3626	2563	4304	11349	5377	3657	10047
2.2	Other Employees	3077	3081	4922	6803	5212	3986	12828
3	Unpaid family members/proprietor etc.	89	132	208	84	51	50	130
B	Total Man days Employed (in '000)	7165	9778	11273	20090	12285	8082	18823
C	Wages and Salaries Including							
	Employers' Contribution	36953	32608	47196	114200	85068	68067	147003
1	Wages and Salary Including Bonus	30480	28125	39745	96113	69703	58949	127102
1.1	Wages and Salary	29021	26515	37475	91155	67226	55802	120040
1.1.1	Workers	14051	14962	17291	39931	24657	15181	38430
1.1.2	Supervisory & Managerial	10254	7457	14405	41144	27214	33946	56894
1.1.3	Other Employees	4716	4096	5779	10080	15355	6675	24716
1.2	Bonus to All Staff	1458	1610	2270	4959	2477	3146	7062
2	Employers' Contribution	6473	4483	7451	18087	15365	9118	19901

Table -8 (contd.)

SI No	Characteristics	332	333	341	342	343	351	352
A	No. of Persons Engaged	8416	12028	108843	28461	329362	29392	27032
1	Workers	5247	9877	80963	24337	259428	24467	21171
1.1	Directly Employed	4770	8890	56871	9026	153741	8648	11574
	Men	3666	4793	56489	9014	146586	8618	11437
	Women	1104	4097	382	12	7155	30	137
	Children	0	0	0	0	0	0	0
1.2	Employed Through Contractors	477	987	24092	15310	105687	15819	9597
2	Employees Other Than Workers	3132	2086	27872	4001	69071	4883	5789
2.1	Supervisory and Managerial	1603	927	19414	1781	32848	1946	2495
2.2	Other Employees	1529	1159	8458	2220	36223	2937	3294
3	Unpaid family members/proprietor etc.	37	65	7	123	863	42	71
B	Total Man days Employed (in '000)	2549	3641	33984	8557	100062	8171	8073
C	Wages and Salaries Including							
	Employers' Contribution	11762	21426	381820	26225	499813	44107	34443
1	Wages and Salary Including Bonus	10115	18608	301446	23786	416360	39870	28854
1.1	Wages and Salary	9576	17938	280169	22950	393999	38504	27213
1.1.1	Workers	3666	7630	126893	15020	208797	24352	15160
1.1.2	Supervisory & Managerial	4149	7055	131878	5435	134092	7508	8230
1.1.3	Other Employees	1761	3253	21398	2495	51110	6644	3823
1.2	Bonus to All Staff	539	671	21276	836	22361	1367	1642
2	Employers' Contribution	1647	2818	80374	2439	83453	4237	5589

Table -8 (contd.)

SI No	Characteristics	353	359	361	369	371	372	Other
A	No. Of Persons Engaged	5600	143174	36603	180888	400	2581	215784
1	Workers	3812	111810	27919	145383	257	2180	134779
1.1	Directly Employed	3033	76255	20761	117145	174	595	109088
	Men	2943	75187	20016	93469	163	359	107695
	Women	90	1068	745	23676	11	236	1393
	Children	0	0	0	0	0	0	0
1.2	Employed Through Contractors	780	35555	7158	28237	83	1585	25689
2	Employees Other Than Workers	1784	30823	8465	34693	137	347	78737
2.1	Supervisory and Managerial	900	15973	3331	14551	59	115	26681
2.2	Other Employees	884	14850	5134	20142	78	232	52056
3	Unpaid family members/proprietor etc.	4	541	219	813	7	54	2267
B	Total Man days Employed (in '000)	1652	43552	11440	53562	102	746	65400
C	Wages and Salaries Including Employers' Contribution	22928	238740	50998	190654	560	1532	233187
1	Wages and Salary Including Bonus	20179	201079	43951	170556	481	1445	206309
1.1	Wages and Salary	19578	192383	42232	162841	478	1417	195424
1.1.1	Workers	9754	99580	21021	105085	325	855	83574
1.1.2	Supervisory & Managerial	5417	70682	12652	37168	99	356	60143
1.1.3	Other Employees	4407	22121	8559	20588	54	206	51707
1.2	Bonus to All Staff	601	8695	1719	7714	3	28	10885
2	Employers' Contribution	2749	37661	7047	20098	79	87	26878



**Table 9 :**  
**Annual Series For Principal Characteristics of all Industries**  
**(Value Figures in Rs. Lakhs, Mandays in Thousand and Others in Number)**

	Characteristics	1981-82	1982-83	1983-84	1984-85
	1	2	3	4	5
1	Number Of Factories	105037	93166	96706	100328
2	Fixed Capital	3470259	4100600	4860554	5484211
3	Working Capital	1505488	1631988	1850402	2232323
4	Invested Capital	5399127	6299198	7249434	8050202
5	Outstanding Loans	3349934	3852135	4811656	5247519
6	Number Of Workers	6105622	6312673	6158837	6091409
7	Mandays-Workers	1686248	1791856	1851719	1855498
8	Number Of Employees	7777868	8009792	7824121	7871712
9	Mandays-Employees	2154214	2337524	2383165	2406722
10	Total Person Engaged	7894254	8166168	7994406	7981370
11	Wages To Workers	439417	514828	592078	675730
12	Total Emoluments	677753	804609	921825	1066021
13	Old Age Benefits	50425	57412	67713	78487
14	Social Security Benefits	13832	17531	17566	19607
15	Other Benefits	25872	28602	36482	42628
16	Fuels Consumed	524730	649889	784560	918471
17	Material Consumed	4354078	5041668	5533507	6419685
18	Total Inputs	5694900	6709650	7001692	8062437
19	Products	6539253	7676689	8802296	9915008
20	Value Of Output	7363046	8623768	9353741	10556600
21	Depreciation	216889	246754	338331	405448
22	Net Value Added	1451257	1667368	2013718	2088716
23	Rent Paid	16881	19706	22460	25852
24	Interest Paid	326918	407611	469881	533774
25	Net Income	1107458	1240051	1521377	1529089
26	Net Fixed Capital Formation	507756	539614	621321	622010
27	Gross Fixed Capital Formation	724646	786368	959652	1027458
28	Addition In Stock Of				
	(i)Material,Fuels Etc.	134693	56659	76564	116086
	(ii)Semi Finished Goods	42637	41053	45241	51077
	(iii)Finished Goods	104065	151451	38385	-17935
	(iv)Total	281401	249163	160190	149228
29	Gross Capital Formation	1006054	1035532	1119842	1176687
30	Profits	339576	331897	477971	322345

Table -9 (contd.)

	Characteristics	1985-86	1986-87	1987-88	1988-89
	1	6	7	8	9
1	Number Of Factories	101016	97957	102596	104077
2	Fixed Capital	6008524	6723094	7847463	8912356
3	Working Capital	2379864	2180329	2755102	2724616
4	Invested Capital	8811181	9769297	11393383	13297905
5	Outstanding Loans	6207203	7009633	7943693	6546478
6	Number Of Workers	5819169	5806866	6061786	6026328
7	Mandays-Workers	1795111	1789947	1871201	1851385
8	Number Of Employees	7471515	7441879	7785580	7743344
9	Mandays-Employees	2298690	2325830	2425810	2400364
10	Total Person Engaged	7584007	7548755	7903826	7858281
11	Wages To Workers	709209	785043	893370	1029223
12	Total Emoluments	1108113	1229918	1408105	1572832
13	Old Age Benefits	86622	97271	109067	156623*
14	Social Security Benefits	24747	28534	30863	114538*
15	Other Benefits	41751	43008	49227	
16	Fuels Consumed	1099034	1205704	1432489	1418122
17	Material Consumed	7443229	8110653	9394302	11496681
18	Total Inputs	9248839	10284440	11938728	14258830
19	Products	11272340	12461540	14449855	17308978
20	Value Of Output	11945705	13304352	15397307	18434878
21	Depreciation	440053	464687	625220	712568
22	Net Value Added	2256813	2555224	2833360	3463480
23	Rent Paid	32566	35942	44751	59620
24	Interest Paid	614809	708763	862606	969355
25	Net Income	1609438	1810520	1926003	2434505
26	Net Fixed Capital Formation	643242	650461	811991	806184
27	Gross Fixed Capital Formation	1083295	1115148	1437211	1518752
28	Addition In Stock Of				
	(i)Material, Fuels Etc.	126457	108627	284960	541945
	(ii)Semi Finished Goods	43134	24492	41782	107758
	(iii)Finished Goods	124124	135469	119144	276387
	(iv)Total	293715	268588	445886	926090
29	Gross Capital Formation	1377010	1383736	1883097	2444842
30	Profits	348205	411789	328741	590512

Table -9 (contd.)

Characteristics		1989-90	1990-91	1991-92	1992-93
	1	10	11	12	13
1	Number Of Factories	107992	110179	112286	119494
2	Fixed Capital	10692778	13364756	15190240	19287139
3	Working Capital	3386365	4252036	4446816	6249011
4	Invested Capital	15914036	19491285	22123418	27772858
5	Outstanding Loans	8430536	10456557	11018723	16128731
6	Number Of Workers	6326541	6307143	6269039	6649310
7	Mondays-Workers	1962805	1949506	1935646	2040458
8	Number Of Employees	8142550	8162504	8193590	8704947
9	Mondays-Employees	2549238	2542346	2557384	2715117
10	Total Person Engaged	8256712	8279403	8319563	8835952
11	Wages To Workers	1179567	1319205	1358263	1683112
12	Total Emoluments	1840888	2058633	2097048	2756026
13	Provident & Other Funds	193407	216438	236399	284256
14	Workmen & Staff Welfare Expense	131946	160118	185441	228257
15	Fuels Consumed	1789759	2089975	2405611	3107273
16	Material Consumed	14407490	16694319	18540808	22369361
17	Total Inputs	17871549	20898600	23302799	28294279
18	Products And By- Products	21580473	25275671	27960785	34224991
19	Value Of Output	23004199	27056353	29919581	36861377
20	Depreciation	866369	1006294	1134080	1442279
21	Net Value Added	4266281	5151459	5482702	7124819
22	Rent Paid	72808	88474	119117	140144
23	Interest Paid	1213680	1488850	1881190	2262427
24	Net Income	2979793	3574136	3482395	4722248
25	Net Fixed Capital Formation	1150248	1422965	1926934	2161825
26	Gross Fixed Capital Formation	2016617	2429259	3061014	3604104
27	Addition In Stock Of				
28	(i)Material, Fuels Etc.	408877	400620	274343	1210489
	(ii)Semi Finished Goods	107467	118404	142502	151052
	(iii)Finished Goods	187941	307620	366595	679089
	(iv)Total	704286	826643	783440	2040630
	Gross Capital Formation	2720902	3255902	3844455	5644734
29	Profits	813552	1138947	963507	1453708

Table -9 (contd.)

	Characteristics	1993-94	1994-95	1995-96	1996-97	1997-98
	1	14	15	16	17	18
1	Number Of Factories	121594	123010	134571	132814	136012
2	Fixed Capital	22441333	27764512	34846773	38004439	42308227
3	Working Capital	8710857	8729632	10766313	17165931	15461658
4	Invested Capital	32054715	38753459	48996925	52215413	57682603
5	Outstanding Loans	16271340	20637103	24693365	25960884	32460512
6	Number Of Workers	6632323	6970116	7632297	7208143	7652254
7	Mondays-Workers	2045434	2163012	2393812	2303625	N.A
8	Number Of Employees	8707909	9102407	10044697	9448643	9997573
9	Mondays-Employees	2726927	2854829	3196414	3037414	N.A
10	Total Person Engaged	8837716	9227097	10222169	9536282	10073485
11	Wages To Workers	1759741	2201946	2797035	2655459	2978167
12	Total Emoluments	2863967	3534151	4511605	4640358	5237112
13	Provident & Other Funds	337756	377664	471214	537849	973758
14	Workmen & Staff Welfare Expense	254955	306388	575882	409225	N.A
15	Fuels Consumed	3372470	4039065	4850854	5464718	6058270
16	Material Consumed	25482640	31167489	41037867	40820342	45842264
17	Total Inputs	32085518	39079472	50749118	55691484	63809899
18	Products And By- Products	39295990	48041810	62112876	64506637	71411682
19	Value Of Output	42574425	51798701	67051423	74180838	83633644
20	Depreciation	1645508	1867530	2362586	2753467	3179621
21	Net Value Added	8843399	10851699	13939719	15735887	16644124
22	Rent Paid	181329	234507	387506	426234	418451
23	Interest Paid	2345535	2678240	3588806	3994437	4560700
24	Net Income	6316535	7938952	9963407	9886483	11664973
25	Net Fixed Capital Formation	1076841	4084716	4549401	5246127	4049844
26	Gross Fixed Capital Formation	2722348	5952246	6911987	7993659	7227085
27	Addition In Stock Of					
28	(i)Material, Fuels Etc.	368835	1015813	997418	510717	225865
	(ii)Semi Finished Goods	70186	205142	341036	115897	118595
	(iii)Finished Goods	112695	543698	811985	749995	632195
	(iv)Total	551715	1764653	2150439	1376609	976655
	Gross Capital Formation	3274064	7716898	9062426	9370268	8203739
29	Profits	2859858	3720750	4404706	4197844	5445612

Table -9(contd.)

	characteristics	1998-99	1999-2000	2000-2001	2001-2002	2002-2003
	1	19	20	21	22	23
1	Number Of Factories	131706	131558	131268	128549	127957
2	Fixed Capital	39115145	40186473	39960422	43196013	44475938
3	Working Capital	10274034	10378436	10520839	10040585	10012110
4	Invested Capital	53706813	56663430	57179940	60591285	63747308
5	Outstanding Loans	22820981	25378161	25795392	26921926	26339233
6	Number Of Workers	6364464	6280659	6135238	5957848	6161493
7	Mondays-Workers	N.A	1904067	1858844	1800576	1870226
8	Number Of Employees	8588581	N.A	7917810	7686654	7870529
9	Mondays-Employees	N.A	2482671	2411969	2332893	2397579
10	Total Person Engaged	N.A	8172836	7987780	7750366	7935948
11	Wages To Workers	2482648	2630427	2767074	2743824	2968905
12	Total Emoluments	4462585	4784351	5071873	5105957	5515801
13	Provident & Other Funds	N.A	683228	665095	780680	815297
14	Workmen & Staff Welfare Expense	N.A	455567	448770	458284	503115
15	Fuels Consumed	4625952	5519803	5896802	5972579	6657582
16	Material Consumed	44447997	52516779	56144875	58796122	70077245
17	Total Inputs	61004389	70936465	74855152	77922749	91618549
18	Products And By- Products	68102731	78311715	81847916	84936649	100128587
19	Value Of Output	78377081	89793835	92690185	96245663	113056111
20	Depreciation	2826587	3359929	3472893	3892702	4203558
21	Net Value Added	14546105	15497442	14362141	14430212	17234004
22	Rent Paid	409083	453117	407862	375118	379356
23	Interest Paid	3969283	4387703	4198659	4221788	3835182
24	Net Income	10167739	10656621	9755619	9833306	13019466
25	Net Fixed Capital Formation	4080495	1507954	1215034	3122442	541866
26	Gross Fixed Capital Formation	6907081	4867882	4687927	7015145	4745424
27	Addition In Stock Of					
28	(i)Material, Fuels Etc.	3754	749937	236267	333170	1087077
	(ii)Semi Finished Goods	135366	153976	232012	78730	229669
	(iii)Finished Goods	171599	694739	985274	-39746	335468
	(iv)Total	310719	1598652	1453553	372154	1652214
	Gross Capital Formation	7217800	6466535	6141480	7387299	6397638
29	Profits	4730623	4733475	3569880	3488385	6185254

Table -9 (contd.)

	Characteristics	2003-04	2004-05	2005-06	2006-07	2007-08
	1	24	25	26	27	28
1	Number Of Factories	129074	136353	140160	144710	146385
2	Fixed Capital	47333140	51306925	60694028	71513139	84513209
3	Working Capital	11923049	16005396	18446260	28218880	31695306
4	Invested Capital	67959786	75941770	90157861	107150382	128012553
5	Outstanding Loans	28977564	33463375	35150737	42858882	45399645
6	Number Of Workers	6086908	6599298	7136097	7880536	8198110
7	Man days-Workers	1840986	1995220	2154187	2383707	2477465
8	Number Of Employees	7803395	8383278	9038523	10252148	10378495
9	Man days-Employees	2368602	2544598	2739729	3034322	3144881
10	Total Person Engaged	7870081	8453624	9111680	10328434	10452535
11	Wages To Workers	3047777	3363505	3766366	4429135	5103023
12	Total Emoluments	5833675	6440594	7400820	8875099	10544284
13	Provident & Other Funds	878363	807614	857258	1029960	1106509
14	Workmen & Staff Welfare Expense	533395	583074	612293	753445	851638
15	Fuels Consumed	9198216	8585384	9662969	12006706	12956170
16	Material Consumed	77501526	102434747	120428441	151177096	175288695
17	Total Inputs	103962329	136294133	154365843	194836758	222295282
18	Products And By- Products	113574250	144520293	169755185	212863582	247071651
19	Value Of Output	128740055	167256142	190835548	240854764	277570904
20	Depreciation	4482349	4971324	5283286	6445480	7116354
21	Net Value Added	20295377	25990686	31186419	39572526	48159268
22	Rent Paid	416084	453845	529948	640399	750549
23	Interest Paid	3397229	3245360	3339801	4131128	5148688
24	Net Income	16482065	22291481	27316670	34800999	42260031
25	Net Fixed Capital Formation	1271031	2553722	7324388	7987020	10662743
26	Gross Fixed Capital Formation	5753380	7525046	12607674	14432500	17779098
27	Addition In Stock Of					
28	(i)Material, Fuels Etc.	1318920	2377486	2178056	2926206	4952720
	(ii)Semi Finished Goods	130864	642020	853964	927755	1060215
	(iii)Finished Goods	215599	462739	1517008	1646496	2437910
	(iv)Total	1665383	3482245	4549027	5500458	8450845
	Gross Capital Formation	7418762	11007290	17156701	19932958	26229942
29	Profits	9236632	14460199	18446298	24142496	29757600

**Table 10**  
**Principal Characteristics By Major States in ASI 2007-08**  
**(Arranged in Descending Order of Net Value Added)**  
**(Value Figures in Rs. Lakhs & Others in Numbers)**

Sl No	States	Factories	Fixed Capital	Productive Capital	Invested Capital	Workers
	1	2	3	4	5	6
1	Maharashtra	18304	13729202	18422682	21476750	953097
2	Gujarat	15107	14540034	19652098	20955836	797443
3	Tamil Nadu	21042	7933659	10092622	12952311	1283478
4	Karnataka	8443	5996709	7235916	8622398	567836
5	Andhra Pradesh	16741	6425102	8571634	9583545	862414
6	Uttar Pradesh	10717	5845002	8087008	9195910	589695
7	Jharkhand	1615	2239894	2375552	2976122	117548
8	Haryana	4707	2886838	3695768	4785642	400895
9	Chattisgarh	1854	2294829	4954027	3086215	118228
10	Madhya Pradesh	3165	2441823	3515936	3643168	194046
11	West Bengal	5987	3233151	4556872	5080180	421280
12	Punjab	10178	2178348	3414942	3998676	435386
13	Orissa	1822	4337008	4907726	5221774	145276
14	Rajasthan	6337	2258736	3544526	3430271	278541
15	Himachal Pradesh	1160	2000292	2532269	2447573	72095
16	Uttaranchal	1474	1297142	1753058	1867732	97687
17	Daman& Diu	1487	430938	1404607	1099346	63912
18	Kerala	5584	914336	1332559	1707590	308641
19	Dadra& Nagar Haveli	1014	899735	1579760	1379786	67469
20	Goa	522	450019	795152	757597	37617
21	Delhi	3198	292626	717975	696688	88664
22	Assam	1859	891081	1237240	1301965	113132
23	Jammu& Kashmir	672	247275	540278	404752	42219
24	Puducherry	703	300989	545726	537869	40494
25	Bihar	1783	301470	465033	563684	62319
26	Meghalaya	90	61033	116154	83251	4574
27	Chandigarh(U.T.)	294	51643	96609	93796	8209
28	Tripura	340	24494	45797	46419	20696
29	Nagaland	104	2792	5201	6953	2494
30	Andaman& N. Island	12	5870	11814	6746	283
31	Manipur	69	1141	1972	2006	2442
<b>Total</b>	<b>All India</b>	<b>146385</b>	<b>84513209</b>	<b>116208515</b>	<b>128012553</b>	<b>8198110</b>

Table -10 (contd.)

Sl No	States	Total Persons Engaged	Wages to workers	Total Emoluments	Total Input	Gross Output
	1	7	8	9	10	11
1	Maharashtra	1354827	846112	2054112	39734657	51993933
2	Gujarat	1045475	528857	1104079	37301776	44824316
3	Tamil Nadu	1549761	644041	1221721	21857515	26543807
4	Karnataka	724075	383165	835879	14472015	18425766
5	Andhra Pradesh	1041265	422911	780932	14635147	18253326
6	Uttar Pradesh	751165	324673	684339	16310149	19381502
7	Jharkhand	152668	181976	322119	3792497	6033835
8	Haryana	509617	253746	548442	10354645	12488415
9	Chattisgarh	155819	86925	267033	4140593	5795018
10	Madhya Pradesh	255293	123661	258187	6279077	7872158
11	West Bengal	515972	310289	506474	9265904	10946382
12	Punjab	550351	216337	376561	8013923	9616285
13	Orissa	184886	129957	248868	3250472	4801383
14	Rajasthan	370261	138032	279281	6204059	7662696
15	Himachal Pradesh	95612	39593	100197	2062815	3300801
16	Uttaranchal	129585	70785	135239	2388712	3306679
17	Daman& Diu	86519	29381	87964	2159855	2879179
18	Kerala	356147	133235	227329	4874337	5556577
19	Dadra& Nagar Haveli	85709	32779	71623	3578814	4186276
20	Goa	50847	33052	66061	1455295	1887257
21	Delhi	127960	50572	136140	2288035	2685813
22	Assam	134284	42729	75245	2705324	3104360
23	Jammu& Kashmir	52664	19402	33417	1330802	1623015
24	Puducherry	50737	24060	60360	1310037	1602722
25	Bihar	73676	22891	35245	2043956	2187362
26	Meghalaya	5587	2950	4839	110950	171468
27	Chandigarh(U.T.)	12828	6073	15821	290071	332643
28	Tripura	22896	3579	5035	60280	76615
29	Nagaland	2974	501	743	9646	13606
30	Andaman& N. Island	351	189	317	9300	11886
31	Manipur	2722	569	681	4623	5825
<b>Total</b>	<b>All India</b>	<b>10452535</b>	<b>5103023</b>	<b>10544284</b>	<b>222295282</b>	<b>277570904</b>



Table -10 (contd.)

Sl No	States	Depreciation	Net Value Added	Rent Paid	Interest Paid
	1	12	13	14	15
1	Maharashtra	1205513	11053762	131213	933678
2	Gujarat	1311786	6210755	77269	628077
3	Tamil Nadu	752170	3934122	76954	638616
4	Karnataka	487935	3465815	73909	289497
5	Andhra Pradesh	472401	3145778	69545	370451
6	Uttar Pradesh	497061	2574292	42063	373245
7	Jharkhand	179163	2062175	7036	101426
8	Haryana	306770	1827000	47755	210256
9	Chattisgarh	197465	1456960	12563	107361
10	Madhya Pradesh	170807	1422273	17378	154942
11	West Bengal	262884	1417593	23832	233513
12	Punjab	185616	1416746	21188	195103
13	Orissa	199761	1351150	12978	173840
14	Rajasthan	234201	1224435	17675	178036
15	Himachal Pradesh	112431	1125555	6808	79019
16	Uttaranchal	86448	831520	10509	97557
17	Daman & Diu	41932	677392	42931	67736
18	Kerala	89416	592824	8390	67818
19	Dadra & Nagar Haveli	82276	525186	5838	84122
20	Goa	41435	390527	7284	20166
21	Delhi	35310	362468	19424	42483
22	Assam	71563	327473	6463	36889
23	Jammu & Kashmir	17511	274702	1879	22123
24	Puducherry	31961	260724	5685	20049
25	Bihar	27458	115947	1376	9267
26	Meghalaya	6549	53969	1088	4060
27	Chandigarh(U.T.)	5468	37104	1137	7166
28	Tripura	1987	14348	296	1213
29	Nagaland	244	3716	41	222
30	Andaman & N. Island	725	1861	12	677
31	Manipur	107	1096	31	81
<b>Total</b>	<b>All India</b>	<b>7116354</b>	<b>48159268</b>	<b>750549</b>	<b>5148688</b>

**Table 11 - Principal Characteristics by Rural - Urban Break-up in ASI 2007-08**  
(Value Figures in Rs. Lakhs & Others in Number)

Sector	Factories	Fixed Capital	Productive Capital	Invested Capital	Workers	Total Persons Engaged	Wages to Workers
Rural	60512	50669563	64173910	71907635	3708577	4631432	1995433
Urban	85873	33843646	52034605	56104917	4489534	5821103	3107591
<b>Total</b>	<b>146385</b>	<b>84513209</b>	<b>116208515</b>	<b>128012552</b>	<b>8198111</b>	<b>10452535</b>	<b>5103024</b>
Sector	Total Emoluments	Total Input	Gross Output	Depreciation	Net Value Added	Rent Paid	Interest Paid
Rural	3984302	107047248	135659793	4008339	24604205	334207	2682593
Urban	6559982	115248033	141911111	3108015	23555063	416342	2466094
<b>Total</b>	<b>10544284</b>	<b>222295281</b>	<b>277570904</b>	<b>7116354</b>	<b>48159268</b>	<b>750549</b>	<b>5148687</b>

Table 12: -  
Principal Characteristics by Type of Organisation in ASI 2007-08  
(Value Figures in Rs. Lakhs & Others in numbers)

SI No	Type of Organisation	Factories	Fixed Capital	Productive Capital	Invested Capital
1	Individual Proprietorship	40191	1026445	1921827	2096734
2	Joint Family(HUF)	2153	90530	164791	181192
3	Partnership	47249	2785225	5743528	6284700
4	Public limited company	13999	56317777	74313192	80617252
5	Private limited company	38207	17196623	25785358	27814378
6	Govt Dept. Enterprises	84	38018	97833	106501
7	Public Corporation	106	1379356	1538206	1531432
8	Corporate Sector(4+5+6+7)	52396	74931774	101734589	110069563
9	Khadi & Village Industry	245	6928	12092	14136
10	Handloom Industry	32	1014	2921	1543
11	11. Co-operative Society	1953	1458663	1525510	3092510
12	12.Others (Incl MR)	2164	4212630	5103258	6272176
	TOTAL	146385	84513209	116208515	128012553

Table 12(Contd..)

SI No	Type of Organisation	Workers	Total Persons Engaged	Wages to Workers
1	Individual Proprietorship	928462	1117461	273180
2	Joint Family(HUF)	43494	53557	15216
3	Partnership	1501650	1841590	560188
4	Public limited company	2856090	3727972	2395369
5	Private limited company	2439788	3125463	1281001
6	Govt Dept. Enterprises	7902	10820	10957
7	Public Corporation	19636	29763	49054
8	Corporate Sector(4+5+6+7)	5323416	6894018	3736381
9	Khadi & Village Industry	7546	9748	2105
10	Handloom Industry	500	744	262
11	11. Co-operative Society	197441	272963	135634
12	12.Others (Incl MR)	195600	262454	380056
	TOTAL	8198110	10452535	5103023

Table 12(Contd..)

SI No	Type of Organisation	Total Emoluments	Total input	Gross Output
1	Individual Proprietorship	394979	6990197	8183559
2	Joint family(HUF)	24623	543898	632838
3	Partnership	907467	18698393	21530108
4	Public limited company	5344336	124700103	157724103
5	Private limited company	2793205	52602545	63316323
6	Govt Dept. Enterprises	18795	138599	202535
7	Public Corporation	87432	747882	1318680
8	Corporate Sector(4+5+6+7)	8243768	178189129	222561641
9	Khadi & Village Industry	2937	20498	25784
10	Handloom Industry	741	4065	4187
11	Co-operative Society	261440	4205500	4784495
12	Others (Incl NR)	708329	13643602	19848293
	<b>TOTAL</b>	<b>10544284</b>	<b>222295282</b>	<b>277570904</b>

Table 12(Contd..)

SI No	Type of Organisation	Depreciation	Net Value Added	Rent Paid	Interest Paid
1	Individual Proprietorship	123974	1069388	26638	147022
2	Joint family(HUF)	11236	77703	1758	14328
3	Partnership	328332	2503383	59436	414526
4	Public limited company	4573197	28450803	387985	2842833
5	Private limited company	1571581	9142197	241420	1310728
6	Govt Dept. Enterprises	3589	60347	916	4164
7	Public Corporation	65472	505326	5281	39031
8	Corporate Sector(4+5+6+7)	6213839	38158673	635602	4196756
9	Khadi & Village Industry	331	4956	83	574
10	Handloom Industry	135	-14	26	40
11	Co-operative Society	116179	462816	11703	217192
12	Others (Incl NR)	322329	5882361	15304	158250
	<b>TOTAL</b>	<b>7116354</b>	<b>48159268</b>	<b>750549</b>	<b>5148688</b>

71

