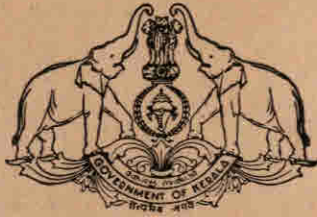


CONFIDENTIAL
(for official use only)

37



REPORT

ON

THE SOCIO ECONOMIC SURVEY ON CASTES/COMMUNITIES

KERALA

1968

Vol.—I

**BUREAU OF ECONOMICS
GOVERNMENT OF KERALA
TRIVANDRUM
1969**

Confidential
(For official use only)

I
I I
I

R E P O R T O N T H E
S A M P L E S U R V E Y O N S O C I O - E C O N O M I C C O N D I T I O N S
O F
C A S T E S / C O M M U N I T I E S
I N
K E R A L A - 1 9 6 8

I
I I
I

Volume I

C o n t e n t s

- PART I Section 1. Introduction.
2. Technical Details.
3. Findings.
- PART II 1. List of Communities.
2. Analytical Tables.
- PART III Appendices.
1. Instructions.
2. Schedules.
3. List of Samples.

*

*

P A R T - I.

Section 1	Introduction
Section 2	Technical Details
Section 3	Findings

I n t r o d u c t i o n

The population of India is comprised of a large number of groups based on religion, faith, culture, occupation etc. with much social and economic disparities. In order to bridge the disparities between the different groups of people and to assure the weaker sections, social and economic independence, the Constitution of India has provided certain safeguards for Scheduled Castes/Tribes and other Backward Classes. One of the safeguards provided for is, reservation of appointments for these classes in Government Service.

As the list of Backward Castes/communities in respect of Kerala State which was prepared some time back, the Honourable High Court of Kerala by a recent order directed that a fresh list of Backward Castes/Communities standing in need of reservation in Government service should be prepared, after assessing the present condition of the classes. Accordingly a commission was appointed by the State Government (to enquire into condition of the various classes) and to suggest the

(Contd..)

classes of people for which reservation should be made in the State Service and also the quantum of reservation for those classes.

As up-to-date data on the conditions of the different classes of people in the state were not available the Commission suggested that a sample survey on the social and economic conditions of the different classes should be conducted by the Bureau of Economics and Statistics. In G.O.(Rt)19/68/PD dated 19-3-'68, the Government sanctioned a scheme for the conduct of a sample survey on the conditions of the classes in the State covering about 50,000 households.

Section I

Technical details

Object of the Survey:

The object of the survey was to obtain data on castes/communities in respect of their size, income, demographic particulars, education, employment, housing and other related characteristics.

Coverage:

The survey covered the entire State.

Period of the Survey:

The field work of the Survey was conducted during the period from May to October 1968.

Sampling Design:

A stratified two-stage systematic sampling design was used for the survey. For stratification, the entire state was divided into 20 strata. The Panchayat and Municipal areas in each District formed separate strata. The Municipal Corporations of Trivandrum and Kozhikode formed two independent strata.

Within each stratum, Panchayat/Municipal wards were the first stage sampling units. In the case of Trivandrum Corporation and double number wards in the Panchayats/Municipalities which were considerably large, each ward was divided into two equal units for sampling. The double member wards in Trivandrum Corporation were considered as four units. The households in the selected wards formed the second stage sampling units.

Sample size:

A 12.5% sample consisting of 1049 Panchayats/Municipal/ Corporation sampling units were selected for the survey.

Within the selected sampling units, all the households with their caste or community and household size by sex were listed. The number of households thus listed in the first stage sampling units was 395745 and the number of persons listed in these households were 2454187 of which 1211133 were males 1243054 females. This sample covering about 12.5% of the total population in the State was used for preparing the community wise population estimates.

From the households listed in the selected wards a 10% sample of households subject to a minimum of 3 in each caste/

community was selected for detailed enumeration.

The number of second stage sampling units selected was 57315 households covering 347027 persons of which 173046 were males and 173981 were females.

Items of information collected:

The following items of information were collected from the Households.

- 1) Households characteristics
- 2) Housing particulars.
- 3) Demographic and employment details of households members.
- 4) Income and expenditure of households.
- 5) Durable consumer goods possessed by Households.

Method of collection of data:

The Investigators appointed for the purpose visited the households and collected the required information.

Staff:

The enumeration was done by 150 Investigators under the supervision of the Statistical Inspectors/Research Assistants in the Districts. The District Statistical Officer was in charge of the field work in the District. Three Regional Supervisors were in overall charge of the field operations, each having charge over 3 Districts.

During the first six months, when the field work was in progress, the following staff were in position at the Headquarters.

Assistant Director	- 1
Research Officers	- 2
Research Assistants	- 2
Peons	- 2

The tabulation work was done by 40 Compilers under the Supervision of 3 Research Assistants, 3 Research Officers and the Assistant Director in a period of about four months.

The Deputy Director (Planning and Co-ordination) was in overall charge of the survey, under the Director, Bureau of Economics and Statistics.

Cost:

The total expenditure for the survey was about Rs. 2.673 lakhs.

Section II

FINDINGS

Castes/Communities and their size:

For the purpose of the survey, a household was considered to belong to a particular caste/community to which majority of its members belong. If the members of the household are equally divided between different castes/communities the caste/community of the head of the household was taken as the caste or community of the household.

The enumeration of castes/communities was mainly based on the list of castes/communities supplied by the Backward Classes Reservation Commission which is given in Part II*. During the course of survey, 199 castes/communities came up for enumeration out of which 45 were Scheduled Castes and 20 were Scheduled Tribes. Some of the Communities enumerated were Scheduled Caste/Scheduled Tribes only in certain specified areas. The number of such communities enumerated outside their specified areas was 22.

The size of each caste/community with its estimated population according to sex is given in Part II Tables. The estimated total population in the State was 200.93 lakhs of

which 99.15 lakhs were males and 101.78 lakhs females. An analytical study reveals that 72 castes/communities are very small having only less than 10000 persons.

Ezhavas, Muslims, Nair, Syrian, Catholics, Scheduled Castes, Jacobites, Kammalas, Latin Catholics and Marthomites are the major castes/communities in the State. The population of these communities varies from 44.57 lakhs for Ezhavas to 3.17 lakhs to marthomites.

The table below gives the list of communities falling within each size group, the total population of the group and their respective percentages.

TABLE - I

List of Castes/Communities in each size group with population and Percentage.

Size group	Sl. No.	Name of Caste/Community	Total population		
			No. in lakhs	Percentage	
1	2	3	4	5	
10000	1.	Aduthon			
	2.	Agasa			
	3.	Ammukudukkan			
	4.	Ballal			
	5.	Bandari			
	6.	Chakkammar			
	7.	Chalamar			
	8.	Choyi			
	9.	Coorg			
	10.	Devadiga			
	11.	Erayar			
	12.	Gowda			
	13.	Gupta			
	14.	Halukuruba		1.31	0.65
	15.	Hegede			
	16.	Hindu Madiyar			
	17.	Jogi			
	18.	Kalari Kurup			
	19.	Kollan			
	20.	Kannadiyar			
	21.	Kavathi			
	22.	Kavudayan			
	23.	Kelasi			

Table - I Contd...

1	2	3	4	5
	24.	Kerala Mudali		
	25.	Komaran		
	26.	Koppala velamas		
	27.	Koteyar		
	28.	Krishnam Vaka		
	29.	Madivala		
	30.	Malai Panicker		
	31.	Maharashtrians		
	32.	Mallar		
	33.	Maniyar		
	34.	Maruthuvan		
	35.	Mogaveera		
	36.	Moili		
	37.	Mooliyas		
	38.	Moovari		
	39.	Mukkulan		
	40.	Muppar		
	41.	Muthu Raja		
	42.	Naidu		
	43.	Padayachi		
	44.	Pandi Sudra		
	45.	Pariji		
	46.	Paradesi		
	47.	Parisaivar		
	48.	Parivara Bunt of South CANERS CANERS		
	49.	Parkava Kulam		
	50.	Pulloon		
	51.	Pulluvan		
	52.	Puruzha		
	53.	Reddiar		
	54.	Senai Thalavar		
	55.	Tholkkollan		
	56.	Thottiyar		
	57.	Ural gowndar		
	58.	Vaduvaks		
	59.	Vaisya		
	60.	Vakkaliga		
	61.	Valamanjazhy		
	62.	Velan Chettiar		
	63.	Veerakodi Vellala		
	64.	Yogi Kurukkal		
	65.	Chaldian (Syrian Christian)		
	66.	Independent (Syn. Christian)		
	67.	Scheduled Tribes converted to Christianity		
	68.	Ghurkhas		
	69.	Jains		
	70.	Jews		
	71.	Parsi		
	72.	Sikhs.		

Size group	Names of Caste/Community	Total Population	
		In lakhs	Percentage
10000-20000	Kshetria Mudaliyar Nedungudi Shetty Evangelical Church S.I.U.C.	0.73	0.36
20000-50000	Ambalavasi Ezhavathi Gownder Kaniyar Kusavan Maravan Naikkans Peruvannan Saiva Vellala Veera Saiva Vella Veluthedathu Nair Anglo Indian		
50000-100000	Chetties Ezhuthachan Kudumbis Salias Vilakkithala Nair Yadavas Other denominations of Christians		
100000-200000	Chakkala Nair Hindu Nadar Communities which are not Scheduled Castes/ Tribes in specified areas. C.S.I.	6.63	3.30
200000-300000	Arayan Brahmin Scheduled Caste con- verts to Christianity Scheduled Tribes Martinmites Latin Catholics Kammalas Jacobites Scheduled Castes Syrian Catholics Nair Muslims Ezhavas All communities	10.45 3.17 7.31 7.56 7.59 15.78 28.95 38.42 44.58 200.93	5.20 1.58 3.64 3.76 3.78 7.85 14.41 19.12 22.19 100.00

Households and their sizes

A household was defined as a group of persons normally living together and taking meals from a common kitchen and forming a separate economic unit. Students staying away from their houses and belonging to the same economic unit were treated as members at their original homes. But, domestic servants staying with the households were not considered as household members as they belonged to separate economic units at their homes. Persons usually staying in Hotels and other boarding houses and forming separate economic units were not considered as household members at their homes.

The total number of households in the State during the period of the survey was found to be 32.39 lakhs, giving an average size of 6.20. The sex composition of the average household size was found to be 3.06 males and 3.14 females. Table () of Part II gives the average household size of the different caste/community.

The distribution of households in the State to their size shows that about 60% of them were having 6 or less persons. Nearly 6% of the households were found to be having more than 10 members

TABLE - 2
Percentage Distribution of households in the State according to size

Household size	Percentage
1	1.85
2	5.11
3	8.67
4	12.98
5	15.70
6	15.62
7	13.45
8	10.05
9	6.68
10	4.02
Above 10	5.87
Total	100.00

This distribution of households for the castes/communities shows that the castes/communities listed below were having more than 40% households of size above 6.

(TABLE -3)

Castes/Communities having more than 40% households of size above 6.

Sl. No.	Name of Caste/Community	Percentage of households of size above 6.
1.	Saliyas	49.71
2.	Syn. Catholics	47.43
3.	Muslims	46.87
4.	Anglo Indians	46.55
5.	Arayas	46.54
6.	Kammalas	44.07
7.	Peruvannan	43.21
8.	Ezhavathy	42.46
9.	Veera saiva	42.01
10.	Shetty	41.95
11.	Kusavan	41.83
12.	Kudumbis	41.14
13.	Saiva vellala	41.10
14.	Ezhavas	40.80
15.	Yadavas	40.73
16.	Latin Catholic	40.69
17.	Veluchedathu Nair	40.61
18.	Kshetria	40.53
19.	Chakkala Nair	40.30
20.	Ezhuthachan	40.21
21.	Kaniyan	40.14

Land owned by the Households:

A person was considered to be owning a piece of land if he had a permanent heritable occupancy right over that land. The total of the lands owned by individual members of the household was considered as the land owned by the household.

The distribution of households according to the extent of land owned by them shows that about one third of them were not owning any land. About 20% of the households were owning land of size above one acre. Only 0.80% of the households were found to be owning lands above 10 acres.

(TABLE -4)

Distribution of Households according to land owned

Sl. No.	Size of land owned (in cents)	Percentage
1.	No land	32.80
2.	1 - 5	4.52
3.	6 - 10	6.36
4.	11 - 25	11.69
5.	26 - 50	12.28
6.	51 - 100	12.26
7.	101 - 200	9.61
8.	201 - 500	7.67
9.	501 - 1000	2.01
10.	1001 - 1500	0.42
11.	1501 - 2500	0.23
12.	Above 2500	0.15
	Total	100.00

The distribution for each caste/community reveals that more than 20% of the households in the following castes/communities were having land above one acre.

(TABLE-5)

List of Caste/Communities in which more than 20% of households own lands above one acre

Sl. No.	Caste/Community	Percentage of households owning above one acre
1.	Shetty	62.77
2.	Jacobites	43.43
3.	S.I.U.C.	43.03
4.	Vakathid	42.11
5.	Marthomites	38.94
6.	Sy. Catholics	38.60
7.	Ambala vasi	36.90
8.	Nedungadi	36.10
9.	Brahmin	34.37
10.	Evangelical church	44.18
11.	Nair	32.85
12.	Yadavas	31.53
13.	Saiva vellala	30.23
14.	Other denominations of Christians	26.70
15.	Veljala	23.43
16.	C.S.I	22.96

Land Possessed

The land possessed by all the members of the household as on the date of the survey was taken into consideration for this purpose.

The distribution of households possessing land shows that only about 19% of them do not possess any land. Below one percent were possessing above 10 acres. About 75% of the households were found to be possessing land below one acre.

TABLE-6)

Percentage distribution of households according to land possessed

....

Sl. No.	Land possessed (in cents)	Percentage of the persons
1.	No land	18.99
2.	1 - 5	7.01
3.	6 - 10	7.60
4.	11 - 25	13.31
5.	26 - 50	14.01
6.	51 - 100	14.01
7.	101 - 200	11.43
8.	201 - 500	10.13
9.	501 - 1000	2.57
10.	1001 - 1500	0.52
11.	1501 - 2500	0.29
12.	Above 2500	0.13

The distribution for the caste/communities shows that more than 25% of the households in the following caste/communities were possessing lands above one acre

(TABLE-7)

Castes/Communities in which more than 25% of households possess land above one acre

Sl. No.	Caste/Communities	Percentage
1.	Shetty	68.45
2.	Nedungadi	55.08
3.	Syn. Catholics	47.91
4.	Jacobites	46.90
5.	S.I.UC.	46.44
6.	Ambalavasi	42.75
7.	Yadavas	40.74
8.	Marthomites	40.21
9.	Kshetrias	39.99
10.	Evangelical church	38.18
11.	Nair	37.72
12.	Saiva vellala	36.38
13.	Other denominations of Christians	32.63
14.	Brahmin	32.58
15.	Ezhuthachan	31.86
16.	Gownder	26.90
17.	C.S.I:	26.07
18.	Vellala	25.23

ANNUAL INCOME OF HOUSEHOLDS

The income of all persons of the households from various sources was considered for this purpose.

The income distribution reveals that about 0.50 percent of the households were getting income below Rs.300 annually. Only less than one percent were found to be in the group above Rs.10000 also. Households getting above Rs.15000 annually were above one fourth percent. Nearly two thirds of the households were getting an annual income of Rs.2000 or less.

(TABLE-8)

Percentage distribution of Households in the State according to annual Income.

Sl. No.	Annual (in Rs.)	Percentage of households
1	2	3
	Below 300	0.54
	301 - 600	4.84
	601 - 1000	17.21
	1001 - 1500	26.19
	1501 - 2000	18.00

Table-8 Contd..

1	2	3
	2001 - 3000	17.81
	3001 - 4000	6.95
	4001 - 5000	3.27
	5001 - 6000	1.86
	6001 - 7000	1.15
	7001 - 8000	0.55
	8001 - 9000	0.47
	9001 - 10000	0.31
	10001 - 11000	0.22
	11001 - 12000	0.15
	12001 - 13000	0.10
	13001 - 14000	0.06
	14001 - 15000	0.06
	Above 15000	0.26
		100.00

The caste/communities in which more than 33.22 percent of households receive income above Rs.2000 are listed in Table No.9.

(TABLE-9)

Caste/Communities in which more than 33.22 Percent households receive annual income above 2000

Sl. No.	Caste/community	Percentage
1.	Brahmin	72.91
2.	Kshetria	57.90
3.	Nedungadi	57.86
4.	Evangelical church	54.54
5.	Shetty	50.46
6.	Marthometas	49.59
7.	Anglo Indian	45.64
8.	Jacobites	45.53
9.	Saiva vellala	45.39
10.	S.I.U.C.	44.89
11.	Syn. Catholics	44.52
12.	Nair	41.66
13.	Chetties	40.57
14.	Other denominations of Christians	39.15
15.	Vellala	37.92
16.	Gownder	35.57
17.	Hindu	33.77
18.	Mudaliyar	33.69

PERCAPITA MONTHLY INCOME OF HOUSEHOLDS

Percapita monthly income of a household was arrived at by dividing the total annual income of the household by the

number of members of the household, and also by twelve. The percapita income may perhaps bring out the differences between large and small households and reveal the actual share of income for each member of the household.

About three-fourth percent of the households were having monthly percapita income below Rs.5/- Nearly 1/4th percent were having percapita income above Rs.300/- About 50 % were having income between Rs. 11 and 25. The total percentage of households with monthly per-capita income below Rs.25/- was about 59.

(TABLE-10)

Distribution of households according to monthly percapita income

Sl. No.	Monthly percapita income	Percentage
1.	Below Rs.5/-	0.76
2.	6 - 10	8.62
3.	11 - 25	49.45
4.	26 - 50	30.32
5.	51 - 100	8.25
6.	101 - 200	1.97
7.	201 - 300	0.40
8.	301 - 500	0.17
9.	501 - 1000	0.05
10.	1001 - 1500	0.01
11.	1501 - 2500	..
12.	Above 2500	..
Total		100.00

The caste/communities in which more than 41% of households receive monthly-percapita income above Rs.25/- are listed in Table 11.

(TABLE-11)

Castes/Communities in which more than 41% of households receive monthly percapita income above Rs.25.

Sl. No. (1)	Caste/Community (2)	Percentage (3)
1.	Mudaliyar	89.13
2.	Brahmin	82.15
3.	Bedungadi	73.15
4.	Shetty	69.41

1	2	3
5.	Ambalavasi	69.29
6.	Evangelical church	65.91
7.	Kabotria	65.79
8.	Maravan	64.95
9.	Gownder	62.64
10.	Vellala	61.36
11.	Hindu Nadar	58.88
12.	S.I.U.C.	58.20
13.	Chetties	57.94
14.	Nair	55.71
15.	Jacobites	54.82
16.	Naikens	54.61
17.	Ezhuthachan	53.73
18.	Other denominations of Christians	52.82
19.	Saiva vellala	51.57
20.	Syn. Catholics	48.01
21.	C.S.I.	44.93
22.	Veluthedathu Nair	44.61
23.	Anglo Indians	44.21
24.	Marthomites	41.26

SIZE OF DWELLING HOUSES ACCORDING TO NUMBER OF ROOMS

The number of rooms occupied by the households was studied. Kitchens and covered verandahs used for dwelling purposes were counted as rooms. But latrines and attached bath rooms were not counted.

Households staying in large houses with 10 or more rooms were about 1.25%. Nearly 62% of the households were living in houses with rooms below three.

(TABLE-12)

Percentage distribution of Households according to the no of living rooms.

Sl. No.	No. of Rooms	Percentage of Households
1.	1	7.46
2.	2	24.77
3.	3	29.60
4.	4	7.95
5.	5	8.98
6.	6	4.74
7.	7	2.67
8.	8	1.60
9.	9	0.98
10.	10	0.57
11.	Above 10	0.68
	Total	100.00

(TABLE-13)

List of castes/communities in which more than 38% of households live in houses with more than 3 rooms

Sl.No.	Caste/community	Percentage
1.	Kshetria	83.68
2.	Brahmin	77.19
3.	Medungadi	68.98
4.	Ambalavasi	67.03
5.	Evangelical church	57.28
6.	S.I.U.C.	54.19
7.	Nair	52.46
8.	Ezhuthachan	52.25
9.	Marthomites	52.19
10.	Jacobites	49.54
11.	Saiva vellala	48.43
12.	Vellala	46.52
13.	C.S.I.	45.74
14.	Syn. Catholic	45.42
15.	Anglo Indian	42.21
16.	Chekkala Nair	42.14
17.	Salias	42.03
18.	Muslims	38.34
19.	Ezhavas	38.31
20.	Veluthedathu Nair	38.18

TENURE OF POSSESSION OF DWELLING HOUSES

An analysis of tenure of possession of the dwelling houses occupied by the households in the state shows that 73% were living in owned houses. About 1/8 of the households were on 'Kudikidappu', and nearly 3% 'Kudiyirippu' 6% of the households lived in rented houses.

(TABLE-14)

Tenure of possession of dwelling houses.

Sl. No.	Type of possession	Percentage
1.	Owned	72.52
2.	Mortgage with possession (otti)	1.35
3.	Rented	5.99
4.	Kudikidappu	12.51
5.	Kudiyirippu	3.14
6.	Others	4.49
Total		100.00

(TABLE-15)

List of castes/commodities in which more than 72.52% of households live in owned houses.

Sl. No.	Caste/community	Percentage
1.	Nedungadi	95.37
2.	Evangelical church	93.19
3.	Marthomites	87.82
4.	Jacobites	87.68
5.	Nair	86.70
6.	Yadavas	83.28
7.	Kshetrias	83.16
8.	S.I.U.C.	81.73
9.	Mudaliyar	81.52
10.	Saiva vellala	79.45
11.	Muslims	77.57
12.	Kaniyan	76.28
13.	Saliyys	76.12
14.	Peruvannan	75.79
15.	Chakkala Nair	75.74
16.	Syn. Catholics	75.20
17.	C.S.I.	74.95
18.	Ambalavasi	74.88
19.	Ezhava	73.98
20.	Vellala	73.35
21.	Velluthedathu Nair	73.21
22.	Shetty	73.19

AGE AND SEX DISTRIBUTION OF HOUSEHOLD MEMBERS

In the household Schedule for the survey, the age of each person as on the last birth day was also enumerated. The percentage distribution of persons in the State shows that nearly 55% of them were in the age group 15 to 59. About 1/8th of the persons were children below age 5 and nearly 27% in the School going age group of 5 to 14. Nearly 6% were reported to be in the older age group of above 60. The distributions for males and femals show that proportinally more males were found in the first two age groups. But more females were found in the higher age groups. The percentage distribution for the castes/commodities enumerated during the survey are given in part II tables.

(TABLE-16)

Percentage distribution of males, females and persons according to age group

....

Sl. No.	Age group (in years)	Sex		
		Males	Females	Persons
1.	Below 5	12.69	12.56	12.63
2.	5 - 14	27.59	26.05	26.81
3.	15 - 59	54.11	55.28	54.70
4.	60 and above	5.61	6.11	5.86
5.	All age groups	100.00	100.00	100.00

EDUCATIONAL STANDARDS OF HOUSEHOLD MEMBERS

....

The educational attainments of each member of the household was enumerated and recorded. The percentage distribution for the State as a whole reveals that about $\frac{1}{3}$ of the people were illiterates and nearly 32% of them literates but below primary. Only 5.53% of the persons have passed examinations S.S.L.C. and above.

(TABLE-17)

Percentage distribution of males, females, and persons according to educational standards.

....

Sl. No.	Educational Standards	Sex		
		Male	Female	Persons
1.	Illiterate	27.92	39.55	33.75
2.	Literate but below primary	32.79	31.13	31.96
3.	Primary	21.01	17.00	19.00
4.	Middle	11.23	8.30	9.76
5.	S.S.L.C.	5.23	3.21	4.22
6.	Pre-university/ Predegree/Intermediate	1.03	0.52	0.77
7.	Graduate	0.66	0.26	0.46
8.	Post graduate	0.13	0.03	0.08
	All Standards	100.00	100.00	100.00

More illiterates were found among females, the percentage being nearly 40. About 7% of the males and 4% of the females have passed examinations S.S.L.C. and above. Table No.18 will reveal the comparative achievements in education of the castes/communities.

(TABLE-18)

List of Castes/communities in which more than 5.53% of persons possess educational standard above S.S.L.C.

Sl. No.	Caste/Community	Percentage of persons with S.S.L.C. and above.
1.	Brahmin	26.60
2.	Kshetria	23.27
3.	Evangelical church	18.40
4.	Ambalavasi	17.08
5.	Nedungady	15.85
6.	Marthomites	13.45
7.	Saiva Vellala	12.12
8.	Vellala	11.19
9.	Jacobites	10.69
10.	C.S.I.	10.64
11.	Nair	10.28
12.	Other denominations of Christians	9.83
13.	S.I.U.C.	9.15
14.	Syn. Catholics	8.05
15.	Anglo Indians	7.76
16.	Kaniyan	6.96
17.	Ezhuthachan	6.09
18.	Shetty	6.08

TECHNICAL EDUCATION

The tables on technical education of the persons in the State reveals that only 1.25% of them were having technical education. 1.66% of the males 0.83% of the females were with technical qualifications vide the subjoined table.

(TABLE-19)

Percentage distribution of males, females and persons according to Technical Education.

Sl. No.	Technical Education	Sex		Persons
		Male	Female	
1	Nil	98.33	99.17	98.75
	<u>Diploma or Certificate</u>			
2	Engineering	0.33	0.09	0.21
3	Medicine	0.10	0.06	0.08
4.	Others	0.94	0.54	0.73

Table-19 Contd...

1	2	3	4	5
	<u>Degree</u>			
5	Engineering	0.05	0.01	0.03
6	Medicine	0.03	0.01	0.02
7	Agriculture	0.01	..	0.01
8	Veternary	0.01	..	0.01
9	Others	0.20	0.12	0.16
10	All Standards	100.00	100.00	100.00

(TABLE-20)

Sl. No.	Caste/community	Percentage of persons possessing technical qualification above 1.25
1.	Kshetria	8.42
2.	Evangelical church	5.58
3.	Brahmin	4.46
4.	Nedungadi	4.48
5.	Vellala	4.16
6.	Ambalavasi	4.05
7.	S.I.UC.	3.96
8.	Marthomites	3.69
9.	Arayan	2.83
10.	Other denominations of Christians	2.81
11.	Jacobites	2.53
12.	Anglo Indians	2.49
13.	Veluthedathu Nair	2.44
14.	Nair	2.32
15.	Saiva vellala	2.31
16.	Kaniyan	2.17
17.	Ezhuthachan	2.13
18.	C.S.I.	2.11
19.	Chakkala Nair	1.77
20.	Mudaliyar	1.66
21.	Latin Catholics	1.40
22.	Vilakkithala Nair	1.37

ACTIVITY STATUS

The activity status of household members was determined on the basis of the work done by them during 7 days preceeding to the date of survey.

If a person was engaged in any gainful activity during the reference period, for pay, profit or family gain or having been attached to work but abstained from work due to the

specific reasons stipulated in the instructions like illness etc. he was considered as employed.

A person was considered to be unemployed if he had no job or enterprise during the reference period and he was within the working age group of 15 to 59.

Employer:

Employer was one who hired one or more persons for running his enterprise.

Employee:

An employee was one who does his work under others for wages or salary in cash or kind.

Self employed person: A self employed person was one who was not employed by another and who did his work without employing others (except casually).

An unpaid family enterprise worker referred to person who assists in the operation of family enterprise without receiving wages in cash or kind.

House wives, too old persons and too young persons etc. were treated to be not in labour force and given under others.

About 31% of the persons were found to be gainfully employed during the reference period and 2.70% of the persons were reported to be employed.

Among males, nearly 44% were gainfully employed; but among females, only 17.36% were gainfully employed.

Unemployed persons among males and females were 3.59 and 1.82% respectively.

(TABLE-21)

Percentage distribution of males, females and persons according to their activity status.

Sl. No.	Type of activity	Percentage distribution		
		Male	Female	Persons
1.	Student	30.35	25.41	27.87
2.	Employee (Daily wages)	19.84	9.38	14.60
3.	Employee (Weekly wages)	1.48	1.23	1.35
4.	Employee (Monthly wages)	5.86	1.35	3.60
5.	Employees	1.92	0.51	1.21
6.	Self employed	12.13	2.76	7.43
7.	Unpaid family enterprise workers	2.74	2.13	2.44
8.	Unemployed	18.59	1.82	2.70
9.	others	22.09	55.41	38.80
	All activities	100.00	100.00	100.00

(TABLE -22)

Castes/communities having more than 30.63% of persons gainfully employed

Sl. No.	Caste/communities	Percentage of gainfully employed persons
1.	Mudaliyar	55.96
2.	Maravan	51.24
3.	Scheduled Tribes	46.18
4.	Castes in specified areas	44.35
5.	Gownder	43.09
6.	Scheduled Castes	42.69
7.	Hindu Nadar	42.12
8.	Naikkans	41.73
9.	Veluthedathu Nair	39.05
10.	Kusavan	38.98
11.	Scheduled castes convertes to Christianity	38.22
12.	Chetties	37.32
13.	Veera Saivas	36.19
14.	Peruvannan	35.82
15.	Yadavas	35.73
16.	Saliyas	33.71
17.	Ezhuthachan	32.19
18.	Ezhavas	32.00
19.	Arayan	32.09
20.	Latin Catholics	32.04

SECTOR OF EMPLOYMENT OF THE GAINFULLY EMPLOYED

The gainfully employed persons have been classified according to the sector in which they are employed nearly 94% of them were found to be in the private sector. Employment in Government service was only just above 4.50% and the remaining 1.50 percent in quasi Government Service. 5.13 percent of the males and 3.09 percent of the females gainfully employed were working in Government sector. The corresponding percentages for quasi Government are 1.65 and 1.03 respectively.

(TABLE-23)

Percentage distribution of gainfully employed according to sector.

Sl. No.	Sector	Sex		Persons
		Males	Females	
1	Government	5.13	3.09	4.55
2	Quasi Government	1.65	1.03	1.47
3	Private	93.22	95.88	93.98
	All sector	100.00	100.00	100.00

(TABLE-24)

Percentage of persons gainfully employed in Government and quasi Government organisation.

(1)	(2)	(3)
1.	Kshetria	23.91
2.	Brahmin	22.87
3.	Nedungadi	21.88
4.	Ambalavasi	20.91
5.	Evangelical church	19.05
6.	S.I.U.C.	17.10
7.	Anglo Indians	14.63
8.	Nair	14.03
9.	Ezhuthachan	12.56
10.	Marthomites	11.93
11.	Saiva vellala	11.57
12.	Vellalas	11.38
13.	C.S.I.	10.48
14.	Jacobites	9.76
15.	Chakkala Nair	9.25
16.	Veera saiva	8.61

Table-24 Contd..

1	2	3
17.	Kaniyan	8.17
18.	Hindu Nadar	8.12
19.	Peruvannan	8.10
20.	Other denominations of Christians	7.32
21.	Syn. Catholics	6.94
22.	Ezhavathy	6.56

The major occupation of the gainfully employed persons in the State was agricultural labour (including hunters, fishermen, loggers etc.) Nearly 36% came under this category. Also about 20% were farmers, 16% employed as craftsmen and 7.49% as salesmen. 6.01% of gainfully employed were reported to be in service occupations and 4.50% working as unskilled labours. About 2.50% were School Teachers.

(TABLE-25)

Percentage distribution of gainfully employed according to their occupation.

.....

Sl. No.	Occupation	Percentage
1	2	3
1.	Engineers - Junior Engineers & above	0.09
2.	Other Engineering Professions - Below Junior Engineer.	0.23
3.	Professional Scientists - Natural, Physical and Social (include Mathematicians, Physicist, Chemists Geologists other Physical Scientists, Biologists, Veterinarians, Agronomists, Economists, Accountants and Auditors, Statisticians and Actuaries, Geographers, Socologists, Historians etc.)	0.02
4.	Physicians, Surgeons and Dentists' - Allopathic.	0.07
5.	Physicians - Ayurvedic, Unani, Homeo etc.	0.25
6.	Subordinate medical personnel - Nurses, Midwives, Pharmacist Health Visitors, Medical Technicians etc.	0.27

1	2	3
7.	College and University Teachers	0.09
8.	School Teachers - Primary, Middle and Secondary	2.56
9.	Legal Professions - Judges, Magistrates, Legal Practition and Advisers, Advocates.	0.04
10.	Subordinate Legal Professions - Legal Assistants Advocate, Clerk Petitions Workers.	0.09
11.	Other professional, technical and related workers (include artists, writers, religion workers, astrologist, Palmists, Librarians etc.)	0.53
12.	Administrative Executive and Managerial Workers.	0.52
13.	Clerical Workers - Clerks, Accountants, Typists, Stenos, Cashiers, Compilers.	2.13
14.	Merchants and working proprietors	0.64
15.	Salesman, Shop Assistants etc.	7.45
16.	Farmers - (including cultivators, Farm Managers)	19.80
17.	Farm Workers - (include Hunters fishermen, Loggers etc.)	35.87
18.	Miners and Quarrymen.	0.79
19.	Workers in Transport and Communications Operations (include Shipping Air Craft, Railway, Road, Transport, Post and Telegraph, Telephone etc.)	2.04
20.	Craftsmen in Production process (exclude unskilled labourers)	15.98
21.	Unskilled labourers (excluding farm workers)	4.53
22.	Service Occupations - (include Fire force, Police, Guards, House Keepers, Maids, Butlers Domestic Servants, Sportsmen and Recreation workers etc.)	6.01

The occupational distribution of gainfully employed in each caste is given in Part II tables.

MONTHLY INCOME OF EARNERS

The monthly income of earners (excluding unpaid family enterprise workers) shows that about 1.1 were getting

- 27 -

monthly income below Rs. 5. Only about 0.66% were reported to be receiving monthly income of Rs. 500/- and above. About $\frac{3}{4}$ of the earners in the State were receiving income below Rs.100 per month.

(TABLE-26)
Distribution of earning persons according to monthly income

Sl. No.	Income in Rs.	Percentage
1.	Below 5	1.07
2.	5 - 10	3.27
3.	11 - 25	12.65
4.	26 - 50	26.64
5.	51 - 100	32.70
6.	101 - 200	16.66
7.	201 - 300	4.69
8.	301 - 500	1.66
9.	501 - 1000	0.54
10.	1001 - 1500	0.07
11.	1501 - 3000	0.04
12.	3001 - 5000	0.01
13.	Above 5000	..
All Groups		100.00

(TABLE-27)
List of castes/communities in which the earning persons receiving monthly income above Rs. 100/- were more than 23.76 %.

Sl. No.	Caste/communities	Percentage of persons receiving monthly income above Rs.100/-
1.	Brahmin	68.70
2.	Nedungadi	61.46
3.	S.I.U.C.	53.70
4.	Kshetria	50.55
5.	Ambalavasi	47.47
6.	Evangelical Church	46.98
7.	Jacobites	45.60
8.	Shetty	43.82
9.	Marthomites	41.04
10.	Vellala	40.82
11.	Syn. Catholics	39.34
12.	Nair	38.28
13.	Saiva Vellala	37.67
14.	Other denominations of Christians	33.32
15.	Kammalas	30.99
16.	Kudumbis	26.73
17.	C.S.I.	25.46
18.	Vilakkithala Nair	24.19
19.	Ezhuthachan	24.12
20.	Veluthedathu Nair	23.93

ANNUAL EARNINGS OF THE GAINFULLY EMPLOYED PERSONS

About 25% of the earners were getting annual income between Rs.301 to 600 and 601-1000. About 12.5% were in the higher income group of Rs.5000/- and above. $\frac{2}{3}$ of the earners were receiving annual income below Rs.1000/-

(TABLE-28)

Percentage distribution of earners in the State according to their annual income

Sl. No.	Income groups (in Rs.)	Percentage
1.	Below 300	17.18
2.	301 - 600	24.77
3.	601 - 1000	24.14
4.	1001 - 1500	15.14
5.	1501 - 2000	7.33
6.	2001 - 3000	7.24
7.	3001 - 4000	2.08
8.	4001 - 5000	0.89
9.	5001 - 6000	0.52
10.	6001 - 7000	0.19
11.	7001 - 8000	0.15
12.	8001 - 9000	0.12
13.	9001 - 10000	0.07
14.	10001 - 11000	0.04
15.	11001 - 12000	0.04
16.	12001 - 13000	0.02
17.	13001 - 14000	0.01
18.	14001 - 15000	0.01
	Above 15000	0.06
	All Groups	100.00

(TABLE-29)

List of communities in which earners with annual income above Rs. 1000/- formed /more than 33.91%.

Sl. No.	Castes/communities	Percentage of persons receiving annual income above Rs.1000/-
1	2	3
1.	Brahimin	88.86
2.	Nedungadi	66.99
3.	S.I.U.C.	65.48
4.	Marthomites	62.98
5.	Kshetrias	62.46
6.	Shetty	61.68
7.	Jacobites	57.15
8.	Evangelical church	56.34

Table-29 Contd..

1	2	3
9.	Ambalavasi	55.34
10.	Saiva vellala	52.38
11.	Sy. Catholics	51.08
12.	Nair	49.08
13.	Anglo Indians	47.90
14.	Other denominations of Christians	44.86
15.	Veluthedathu Nair	42.75
16.	Vilakkithala Nair	42.24
17.	Vellala	41.76
18.	C.S.I.	40.82
19.	Kammalas	40.35

CONCLUSION

The survey has thrown out useful and upto date Statistics on the important characteristics of the various castes/communities in the State. It has also brought out valuable information on Socio-Economic characteristics for the State as a whole.

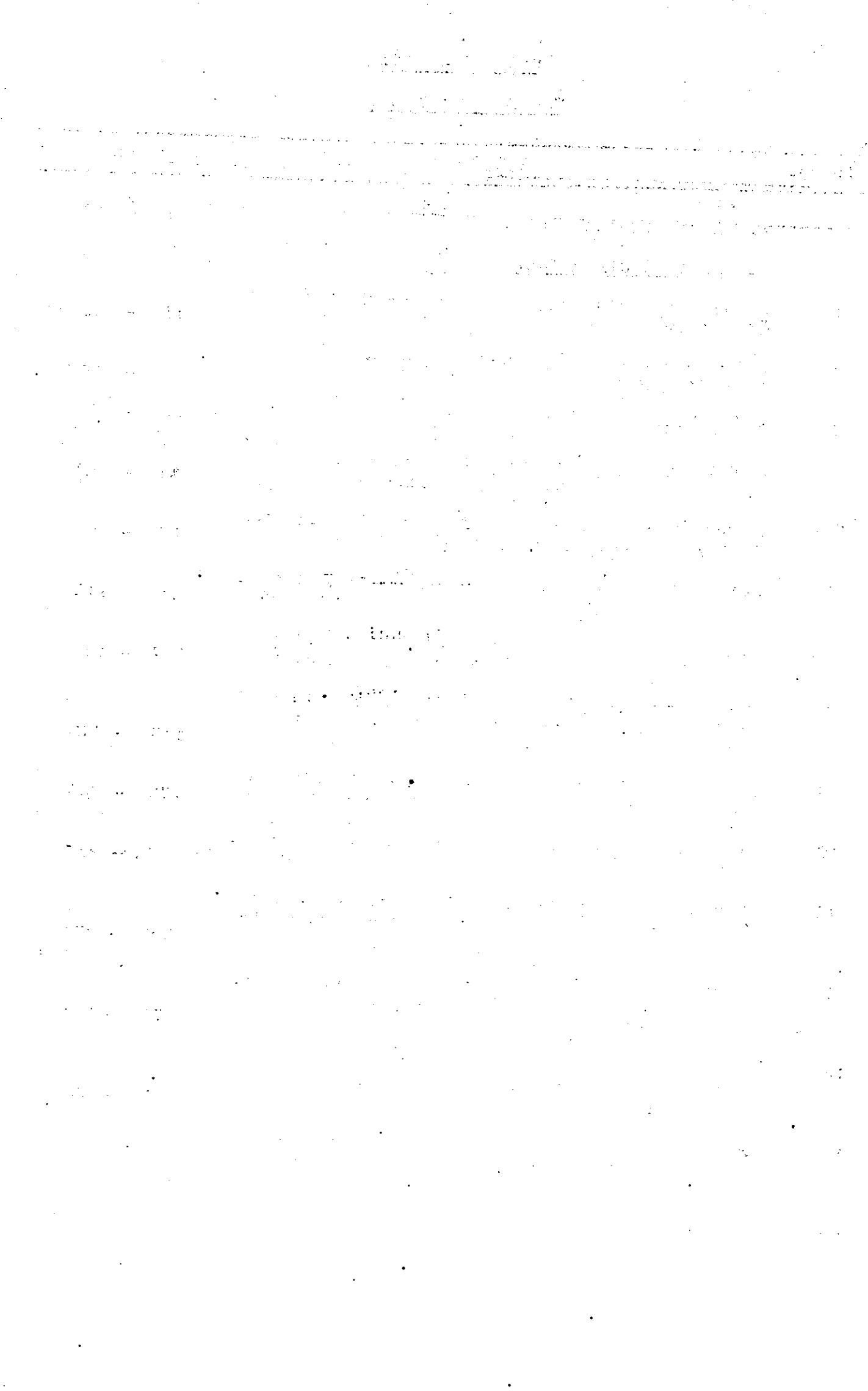
In the above analysis of the characteristics, only these castes/communities who estimated population was above 10,000 were considered. The estimates for the smaller groups for which sufficient number of households did not occur in the sample, may not be fully reliable, as they are subject to high degree of sampling fluctuations.

...



P A R T - II

1. List of Communities
2. Analytical tables.



P A R T - II.
C O N T E N T S .

Seri- ale No.	I T E M.	Pages.
	A. List of Communities	2 - 10
	B. <u>Analytical tables.</u>	
1	Population Estimates According to Caste/ Community	11 - 19
2	Average household size of different Caste/Community	20 - 24
3	Sample size	25 - 32
4	Percentage Distribution of households in each Caste/community according to size	33 - 63
5	Percentage Distribution of households in each Caste/community according to Land Owned	64 - 89
6	Percentage Distribution of households in each Caste/community according to Land possessed	90 - 116
7	Percentage Distribution of households in each Caste/community according to Annual Income	117 - 144
8	Percentage Distribution of households in each Caste/Community according to Monthly Percapita Income	145 - 172
9	Percentage Distribution of households in each Caste/Community according to Number of rooms	173 - 206
10	Percentage Distribution of households in each Caste/Community according to tenure of possession	207 - 237
11	Percentage Distribution of Males, Females and persons in each caste/community according to Age Groups	238 - 270
12	Percentage Distribution of Males, Females and persons in each caste/community according to Educational Standards	271 - 334
13	Percentage Distribution of Males, Females and persons in each caste/community according to Technical Education	335 - 398
14	Percentage Distribution of Males, Females and persons in each caste/community according to Activity Status.	399 - 462

Table No.

I T E M

Pages.

15	Percentage Distribution of gainfully employed Males, Females and persons in each caste/community according to sector of Employment.	463	-	495
16	Percentage Distribution of persons in each caste/community according to occupation	496	-	544
17	Percentage Distribution of earning persons in each caste/community according to Monthly Savings.	545	-	578
18	Percentage distribution of earning persons in each caste/community according to Annual Earnings.	579	-	609

PART - II

L I S T O F C O M M U N I T I E S

A : SCHEDULED CASTES

B : SCHEDULED TRIBES

C : COMMUNITIES OTHER THAN SCHEDULED
CASTES AND SCHEDULED TRIBES.

.....

THE UNIVERSITY OF CHICAGO

PHYSICS DEPARTMENT

PHYSICS 311
LECTURE 10
THERMODYNAMICS
ENTROPY
REVERSIBLE PROCESSES
CARNOT CYCLE
HEAT ENGINES
SECOND LAW OF THERMODYNAMICS
MAXWELL RELATIONS
GIBBS FREE ENERGY
PHASE EQUILIBRIUM
CLAUDE LOUIS BERNARD

ENTROPY
REVERSIBLE PROCESSES
CARNOT CYCLE
HEAT ENGINES
SECOND LAW OF THERMODYNAMICS
MAXWELL RELATIONS
GIBBS FREE ENERGY
PHASE EQUILIBRIUM
CLAUDE LOUIS BERNARD

DISTRIBUTION OF CASTES/COMMUNITIES

A. SCHEDULED CASTES

- i) Throughout the State
- ii) Throughout the State except Kasargod Taluk of Malabar District
- iii) Throughout the State except Malabar District excluding Kasargod Taluk
- iv) Throughout the State except Malabar District
- v) In Malabar District
- vi) In Malabar District excluding Kasargod Taluk.

B. SCHEDULED TRIBES

- i) Throughout the State
- ii) Throughout the State except Malabar District
- iii) In Malabar District
- iv) In Malabar District excluding Kasargod Taluk
- v) In Kasargod Taluk.

C. COMMUNITIES OTHER THAN SCHEDULED CASTES & SCHEDULED TRIBES

C-I. HINDUS.

- i) Throughout the State
- ii) Throughout the State except Malabar District
- iii) Throughout the State except Malabar District excluding Kasargod Taluk.
- iv) In Malabar District
- v) In Malabar District excluding Kasargod Taluk
- vi) In Kasargod Taluk.

C-II. CHRISTIANS Throughout the State.

C-III. MUSLIMS Throughout the State

C-IV. OTHERS Throughout the State.

A . SCHEDULED CASTES

1) THROUGHOUT THE STATE

- | | |
|----------------------|------------------------|
| 1. CHAKKILIYAN | 4. PALLAN |
| 2. KURAVAN, SIDHANAR | 5. PARAYAN or SAMBAVAR |
| 3. NAYADI | 6. VALLUVAN |

ii) THROUGHOUT THE STATE EXCEPT KASARGOD TALUK OF MALABAR DISTRICT:

- | | |
|------------------------|----------|
| 1. KANAKKAN OR PADANNA | 2. PANAN |
|------------------------|----------|

iii) THROUGHOUT THE STATE EXCEPT MALABAR DISTRICT EXCLUDING KASARGOD TALUK)

1. PARAVAN

iv) THROUGHOUT THE STATE EXCEPT MALABAR DISTRICT

- | | |
|--------------|--------------|
| 1. AYYANAVAR | 9. PATHIYAN |
| 2. BHARATAR | 10. PULAYAN |
| 3. BOYAN | 11. THANDAN |
| 4. KAKKALAN | 12. ULLADAN |
| 5. KAVARA | 13. URALY |
| 6. KOODAN | 14. VALLON |
| 7. MANNAN | 15. VETAN |
| 8. PADANNAN | 16. VETTUWAN |

v) IN MALABAR DISTRICT

- | | |
|------------------|----------------|
| 1. ADI DRAVIDA | 10. KARIMPALAN |
| 2. ADI KARNATAKA | 11. KUDUMBAN |
| 3. ARUNTHATHIYAR | 12. MAILA |
| 4. BAIRA | 13. MAVILAN |
| 5. BAKUDA | 14. MOGER |
| 6. BANDI | 15. MUNDALA |
| 7. CHERUMAN | 16. SAMAGARA |
| 8. HCLEYA | 17. SEMMAN |
| 9. KALLADI | 18. THOTTI |

vi) IN MALABAR DISTRICT (EXCLUDING KASARGOD TALUK)

- | | |
|-----------|------------|
| 1. GAVARA | 2. MALAYAN |
|-----------|------------|

B . SCHEDULED TRIBES

1) THROUGHOUT THE STATE:

1. KADAR
2. IRRULAR or IRRULAN
3. MUTHUVAN

11) THROUGHOUT THE STATE EXCEPT MALABAR DISTRICT

1. KANIKKARAN,
KANIKKAR
2. KOCHUVELAN
3. MALAI ARAYAN
4. MALAI PANDARAM
5. MALAYAN
6. MALAYARAYAR
7. PALLEYAN
8. PALLIYAR
9. ULLADAN (HILL DWELLER)

111) IN MALABAR DISTRICT

1. ADIYAN
2. KURICHICHAN
3. KURUMANS
4. PANIYAN
5. PULAYAN

1v) IN MALABAR DISTRICT (EXCLUDING KASARGOD TALUK)

1. KURUMBAS

v) IN KASARGOD TALUK OF MALABAR DISTRICT

1. MARATI.

C . COMMUNITIES OTHER THAN SCHEDULED CASTES AND SCHEDULED TRIBES

C-I. HINDUS

1) THROUGHOUT THE STATE

1. ADUTHON

2. AGASA

3. AMBALAVAST including Unni, Warriar, Kurukkal, Nambiar (T.C.), Nambeesan, Pisharody, Pushpa Unni, Pushpaka, Nambidi, Chakkiar, Adikal, Kallattu Kurup, Poojari.

4. AMMUKKUDAKAN

5. ARAYAN including Valan, Mukkuvan, Marakkan, Mukaya, Mogayan, Arayan, Bovies, Kharvi, Nulayan, Arayavathy, and Chavalakkaran.

6. BALLAL

7. BANDARI or BHONDARI

8. BRAHMIN

including Tamil Brahmins, Telugu Brahmins, Malayala Brahmins, Bhattathiri, Namboodiri, Nambi, Elayad, Moosad, Moothad, Canarese Brahmins (Embran, Embranthiri), Potti, Thulu Potti, Other Non-Malayala Brahmins, Gujarathi Brahmins, Maharashtra Brahmins, Other Indian Brahmins, Gowda Saraswatha Brahmanan.

9. CHAKKALAN

including Chakkala Nair, Vanianas (Vanika, Vanika Vaisya, Vanibhachetty, Vaniya Chetty, Ayiravar, Nagarathar) Vaniar (Oil-Monger Caste all over the State) Chakkala Chetty, Chakkan.

10. CHAKKAMAR

11. CHALAMAR

12. CHETTIES

including Kottar Chetties, Parakka Chetties, Elur Chetties, Attingal Chetties, Pudukkada Chetties, Iraniel Chetties, Sri Pandara Chetties, Telugu Chetties, Udyamkulangara Chetties, Peroorkada Chetties, Sadhu Chetties, 24 Manai Chetties, Wynadan Chetties, Kalavara Chetties, Idanadan Chetties.

13. CHOYI

14. COORG.

15. DEVADIGA
16. ERAYAR
17. EZHAVAS including Thiyyas, Ishuvan, Izhuvan, Illuvvari and Billava.
18. EZHAVATHI including Vathi, Kavuthiyan,
19. EZHUTHACHAN including Kadupattan
20. GCWDA
21. GOUNDER (KOUNDAN)
22. GUPTA
23. HALUKURUBA
24. HEDGE
25. HINDU MADIYAR
26. HINDU NADAR
27. JOGI
28. KALARI KURUP or Kalari Panicker, Ganika, Nagavamsam Parava Kurup.
29. KALLAN including Isanattukallar
30. KAMMALAS or including Karuvan, Kamsalas, Viswa-
VISWAKARMALAS karmas, Pendi Kammala, Malayala
Kammala, Kannan, Moosari, Kalthachan,
Kallassari, Perunkallan, Kollan,
Thattan, Pandithattan, Thachan,
Asari, Villasan, Vilkurup, Viswabrah-
mins, Kitara, Chaptegara.
31. KANISU or KANIYAR PANICKER, KANIYAN, KANISAN,
KANNIAN, GANAKA.
32. KANNADIYANS
33. KAVATHI
34. KAVUDIYARU
35. KELASI
36. KERALA MUDALI including Pannayar, Panniyar,
Sakravar.
37. KOMARAN
38. KOPPALA VELAMAS
39. KOTEYAR (SHERAGARA KSHETRIYA of SOUTH CANARA)

40. KSHETRIYA including Thampuran, Thirumulpad, Raja, Thampan.
41. KRISHNA VAKA
42. KUDUMBIS including Moopan, Kadumbichetty.
43. KUSAVAN including Kulala, Kumbaran, Odan, Oddan (Donga), Odda (Vodde or Vadde or Veddai), Velaan, Andhra Nair, Antur Nair, Gatti.
44. MADIVALAKKI
45. MALAI PANICKER
46. MAHARASHTRA
47. MALLAR
48. MANIYAN
49. MARAVAN, THEVAR, KALLAR
50. MARUTHUVAR
51. MOGAVEERA
52. MOILI
53. MOOLIYAS
54. MUKKULAN
55. MOOVARI
56. MUDALIYAR
57. MUPPER
58. MUTHURAJ
59. NAIDU
60. NAIKKANS including Tholuya Naicker, and Vettiladkkara Naicker.
61. NAIR including Pillai, Thampi, Chempakka-
raman, Unnithan, Valiathan, Nair
Kurup, Marar, Vettakattu Nair,
Tharakan, Kartha, Kurup, Menon,
Moothan, Panicker, Puduval, Manna-
diyar, Kaimal, Chempotti, Madampi,
Thalaya Nair, Nambiar (Malabar),
Marayan, Pallichan, Pulva Nair,
Sudran.
62. NEDUMGADI including Vellodi, Eradi, Pandala,
Samantha Raja, Samantha, Adiyodi,
Kitavu, Unniyathiris.

63. PADIYACHEY
64. PANTI-SUDRA including Perumal Pillai, Pillai, Tamil Pillayar, Telugu Pillai, Vettu Pillai.
65. PANJI
66. PARADESI
67. PARISAIVAR, KAMBAR
68. PARIVARA BUNT OF SOUTH CANARA
69. PARKAVAKULAM including SURITHIMAN, Malayaman, Nathaman, Moopnar, Nainar.
70. PERUVANNAN (VARANAVAR)
71. PULLOON
72. PULLUVAN
73. PURUZHA
74. REDDIAR
75. SAIVA VELLALA, SAIVA PILLAI
76. SALIYAS including Arya, Atagara, Devanga, Kaikolan (Sengunthar), Pattarya (Padmasali, Pattusali, Thogatta, Karivibhakatula, Senapathlu, Sali, Sale, Karikalabhakkulu Chaliya), Sourashtra, Khatri, Pattunulkaran, Illathu Pillai, Illa Vellalar, Illathar)
77. SENAI THALAVAR (ELAVANIAR) SENAIKUDAYAM.
78. SHETTY
79. THOLKOLLANS
80. THOTTI
81. URAL GOUNDAN
82. VADUVANS' VADUGANS
83. VAISYA
84. VAKALIGA
85. VALAVANJAZHY
86. VEERASIVAS including Pandaram, Vairavi, Vairagi, Yoggeswarar, Matapathi & Yogi
87. VELAN CHETTIYAR
88. VELLALA including Vellala Pillai, Nanjinattu Pillai, Nanjinattu Vellala
89. VELUTHEDATHU NAIR including Veluthedan, Vananthan, and Rajaka.
90. VILAKKITHALA NAIR including Vilakkathalavan, Ambattan, Pranopakari, Pandithar, Nasuvan, Nasvan, Kaimakal, Navithan, Pulan.
91. VIRAKODI VELLALAR
92. YADAVAS including Kolaya, Ayar, Mayar, Maniyani, Iriman, Golla, Kolaries.
93. YOGI KURUKKAL.

C-I. HINDUS.

(ii) THROUGHOUT THE STATE EXCEPT MALABAR DISTRICT

- | | |
|------------------|------------------|
| 1. ADI DRAVIDA | 6. SEMMAN |
| 2. ARUNTHATHIYAR | 7. THOTTY |
| 3. CHAMAR | 8. KATTU NAYAKAN |
| 4. CHERUMAN | 9. PANIYAN |
| 5. KUDUMBAN | |

(iii) THROUGHOUT THE STATE EXCEPT MALABAR DISTRICT EXCLUDING KASARGOD TALUK

1. KURUMBA

(iv) IN MALABAR DISTRICT

- | | |
|-------------|--------------|
| 1. BHARATAR | 6. MANNAN |
| 2. BOYAN | 7. THANDAN |
| 3. KOODAN | 8. URALY |
| 4. PADANNAN | 9. VALLON |
| 5. PALLUVAN | 10. VETTUVAN |

(v) IN MALABAR DISTRICT EXCLUDING KASARGOD TALUK

1. PARAVAN

(vi) IN KASARGOD TALUK

1. MALAYAN.

C-II. CHRISTIANS - THROUGHOUT THE STATE

- | | |
|------------------------------|--------------------------------------|
| 1. ANGLO INDIANS | 8. MARTHOMITES |
| 2. CHALDEAN SYRIAN CHRISTIAN | 9. OTHER DENOMINATIONS OF CHRISTIANS |
| 3. C.S.I. | 10. S.C.CONVERTS TO CHRISTIANITY |
| 4. EVANGELICAL CHURCH | 11. S.T. CONVERTS TO CHRISTIANITY |
| 5. INDEPENDENT SYRIANS | 12. S.I.U.C. |
| 6. JACOBITES | 13. SYRIAN CATHOLICS |
| 7. LATIN CATHOLIC | |

C-III. MUSLIMS - THROUGHOUT THE STATE

1. MUSLIMS

C-IV. OTHERS - THROUGHOUT THE STATE

- | | |
|------------|----------|
| 1. GURKHAS | 4. PARSI |
| 2. JAINS | 5. SIKHS |
| 3. JEWS | |

Table 1. POPULATION ESTIMATES ACCORDING TO CASTE/COMMUNITY

A. SCHEDULED CASTES

I. Throughout the State

CASTE/COMMUNITY	Number enumerated			Number estimated				
	Household	Male	Female	Persons	Household	Male	Female	Persons
1	2	3	4	5	6	7	8	9
1. Chakkiliyan	524	1364	1422	2786	4261	11080	11555	22635
2. Kuravan, Sidhakar	4071	10197	10652	20849	33323	83467	87191	170658
3. Nayadi	32	89	97	186	260	725	792	1517
4. Pallan	91	222	242	464	748	1825	1989	3814
5. Parayan	3314	8942	9201	18143	27189	73362	75485	148847
6. Valluvan	263	747	777	1524	2146	6096	6340	12436

II. Throughout the State except Kasargod taluk of Malabar District

1. Kanakkan or rancanna	2810	8356	8646	17002	23012	68421	70805	139226
2. Panan	622	1785	1849	3634	5090	14618	15145	29763

III. Throughout the State except Malabar District (Excluding Kasargod taluk)

1. Paravan	505	1500	1452	2952	4124	12245	11859	24104
------------	-----	------	------	------	------	-------	-------	-------

IV. Throughout the State except Malabar District

1. Ayyanavar	41	119	90	209	332	962	728	1690
2. Bharatar	18	49	75	124	148	403	617	1020
3. Boyan	51	118	144	262	412	955	1166	2121
4. Kakkalan	93	276	277	553	761	2259	2270	4529
5. Kavara	56	174	182	356	460	1416	1481	2897
6. Koodam/Kooden	29	71	79	150	238	582	648	1230

Table - 1 (contd....)

IV. Throughout the State except Malabar District (Contd.....)

	1	2	3	4	5	6	7	8	9
7. Mannan	1637	4918	4955	9873	13397	40241	40551	30792	
8. Padannan	31	85	99	184	254	697	812	1509	
10. Pathiyyan	142	481	490	971	1162	3937	4012	7949	
11. Pulayan or Cheramar	12251	33828	34727	68555	100297	276911	284271	561182	
12. Thandan	2194	6777	6901	13678	17953	55464	56482	111946	
13. Ulladan	96	249	269	517	787	2034	2207	4241	
14. Uraly	137	312	306	618	1119	2551	2501	5052	
15. Vallon	2	6	10	16	16	49	82	131	
16. Vetan	427	1041	1011	2052	3484	8494	8251	16745	
17. Vetuvan	524	1584	1600	3184	4300	12993	13131	26124	

V. In Malabar District

1. Adi Dravida	10	18	28	46	82	147	289	376	
2. Adi Karnatala	110	279	246	525	900	2283	2012	4295	
3. Arunthathiyar	1	2	2	4	8	16	16	32	
4. Baira	1	4	3	7	8	33	24	57	
5. Bakuda	12	42	24	66	98	343	196	539	
6. Bandi	3	9	4	13	25	74	34	108	
7. Cheruman	3057	8083	8672	16755	25013	66128	70949	137077	
8. Holcya	139	552	595	1147	1134	4504	4855	9359	
9. Kalladi	502	1439	1515	2954	4086	11714	12332	24066	
10. Karimpalan	72	174	156	330	589	1422	1274	2696	
11. Kudumbar	1	2	2	4	8	16	16	32	
12. Maila	23	82	83	165	188	671	679	1350	
13. Mavilan	3	14	9	23	24	114	73	187	
14. Mejer	37	114	110	224	302	931	899	1830	
15. Mundala	17	51	60	111	139	416	490	906	
16. Samagara	5	17	10	27	41	139	82	221	
17. Seiman	13	33	36	69	106	270	295	565	
18. Thoti	4	12	6	18	34	100	50	150	

Table-1(Contd....)

: 13 :

A. Scheduled Castes (Contd.....)

	1	2	3	4	5	6	7	8	9
VI. In Malabar District (excluding Kasargod Taluk)									
1. Gavara	62	184	178	362	509	1509	1461	2970	
2. Malayan	203	557	562	1119	1663	4559	4602	9161	
Scheduled Caste - Total	34236	94957	97854	192811	280230	777176	800939	1578115	
B. SCHEDULED TRIBES									
I. Throughout the State									
1. Kadar	46	106	106	212	377	869	869	1738	
2. Irrular - Irrulan	191	417	441	858	1569	3424	3622	7046	
3. Muthuvan, Mudugar	23	41	53	94	189	338	436	774	
II. Throughout the State except Malabar District									
1. Kanikkayan	259	626	611	1237	2101	5082	4958	10040	
2. Kochuvelan	2	7	5	12	16	58	41	99	
3. Malai Arayan	1	5	5	10	8	41	41	82	
4. Malai Pandaram	3	12	9	21	24	98	73	171	
5. Malai Vedan	55	132	127	259	440	1057	1016	2073	
6. Malayarayar	220	567	519	1086	1796	4629	4237	8866	
7. Palleyan	28	68	53	126	230	559	477	1036	
8. Palliyar	274	742	737	1449	2253	6102	5814	11916	
9. Ulladan(Hill Dwellers)	25	66	62	128	205	542	508	1050	
III. In Malabar District									
1. Adiyar	285	827	854	1681	2329	6755	6976	13731	
2. Kurichichan	218	688	664	1352	1880	5618	5422	11040	
3. Kurumans	475	1165	1144	2309	3868	9487	9316	18803	
4. Paniyan	853	2157	2255	4412	6953	17587	18384	35971	
5. Pulayan	2359	6651	6949	13600	19321	54487	56927	111414	
IV. In Malabar District (excluding Kasargod Taluk)									
1. Kurumbas	56	144	144	288	456	1172	1174	2346	

Table-1(Contd.) B. Scheduled Tribes (Contd.....)

	1	2	3	4	5	6	7	8	9
--	---	---	---	---	---	---	---	---	---

V. In Kasargod Taluk of Malabar District

1. Marati	81	387	382	769	661	3158	3117	6275
Scheduled Tribe - Total	5455	14811	15102	29913	44584	121087	123465	244552

C. COMMUNITIES OTHER THAN SCHEDULED CASTES AND SCHEDULED TRIBES

C.I-Hindus - I. Throughout the State except Malabar District

1. Adi Dravida	1	4	6	10	8	32	48	80
2. Arunthathiyar	1	1	3	4	8	8	25	33
3. Chamar/Muchi	1	3	2	5	8	25	16	41
4. Cheruman	434	1182	1202	2384	3512	9580	9728	19308
5. Kudumban	782	2147	2180	4327	6430	17655	17927	35582
6. Semman	8	25	19	44	66	207	156	363
7. Thotti	13	32	28	60	107	263	231	494
8. Kattunayakan	2	6	4	10	16	49	33	82
9. Paniyan	1	1	2	3	8	8	16	24

II. Throughout the State except Malabar District(excluding Kasargod taluk)

1. Kurumba	39	73	75	148	320	600	617	1217
------------	----	----	----	-----	-----	-----	-----	------

III. In Malabar District

1. Bhrathar	1	4	3	7	8	33	24	57
2. Boyan	43	106	110	216	353	869	901	1770
3. Koodan	217	584	597	1181	1781	4792	4900	9692
4. Padannan	11	31	36	67	92	260	302	562
5. Palluvan	2	2	3	5	16	16	25	41
6. Mannan	776	2327	2447	4774	6357	19057	20046	39103
7. Thandan	302	803	859	1662	2480	6594	7054	13648
8. Urall	40	90	82	172	325	732	667	1399
9. Vallon	6	17	17	34	50	140	142	282
10. Vettuvan	743	2193	2275	4468	6190	18276	18963	37239

Table - I (Contd....) C-I-HINDUS (Contd....)

1	2	3	4	5	6	7	8	9
IV. In Malabar District excluding Kasargod taluk								
1. Paravan	0	121	432	831	991	3272	3550	6822
V. In Kasargod taluk of Malabar District								
1. Malayan	6	26	26	52	49	212	212	424
Communities other than S.C. and S.T. in specified areas								
- Sub-Total	3550	10056	10408	20464	29175	82680	85583	168263
VI. Throughout the State								
1. Aduthan	1	4	2	6	8	33	16	49
2. Agasa	8	25	23	48	65	204	188	392
3. Ambalavasi	843	2588	2704	5292	6918	21245	22177	43422
4. Ammukudakan	2	3	2	5	16	25	16	41
5. Arayan	3818	12517	12609	25126	31272	102541	103311	205852
6. Ballal	18	96	112	208	147	783	914	1697
7. Bandari	19	82	59	141	155	669	481	1150
8. Brahmin	5909	17767	17949	35716	48457	145664	147144	292808
9. Chakkalan	2690	8691	9211	17932	21894	71115	75632	146747
10. Chakkamar	152	439	488	927	1246	3600	4004	7604
11. Chalamar	9	25	19	44	72	202	154	356
12. Chetties	1895	5278	5483	10761	15534	43301	45008	88309
13. Choyi	7	20	20	40	57	163	163	326
14. Coorg	6	10	10	28	48	82	82	164
15. Devadiga	2	3	5	8	18	25	41	66
16. Erayar	6	15	16	31	49	122	130	252
17. Ezhavas	88160	268078	276298	544376	721781	2195171	2262637	4457808

Table - 1 (Contd....) HM C.I.-HINDUS (Contd.....)

	1	2	3	4	5	6	7	8	9
<u>VI. Throughout the State</u>									
18. Ezhavathy	640	1983	2043	4026	5234	16214	16713	32927	
19. Ezhuthachan	1467	4242	4612	8854	12058	34870	37915	72785	
20. Gowda	138	454	419	873	1125	3703	3418	7121	
21. Gownder	828	2006	2053	4059	6711	16255	16643	32898	
22. Gupta	128	335	365	700	1051	2750	2997	5747	
23. Halukuruba	2	5	6	11	16	41	49	90	
24. Heggade	8	24	24	48	64	194	194	388	
25. Hindu Madiyar	2	3	3	6	16	25	25	50	
26. Hindu Nadar	3400	9703	9446	19149	27597	78753	76669	155422	
27. Jogi	14	53	61	114	114	434	499	933	
28. Kaları Kurup	171	572	594	1166	1400	4686	4867	9553	
29. Kallan	18	57	57	114	148	467	467	934	
30. Kammalas	14283	45790	46467	92257	117020	375344	380834	756178	
31. Kanisu	942	2998	3014	6012	7707	24538	24666	49204	
32. Kannadlans	52	110	120	230	423	896	977	1873	
33. Kavathi	98	295	254	549	793	2386	2054	4440	
34. Kavudiyaru	1	4	3	7	8	33	24	57	
35. Kelasi	1	5	3	8	8	41	24	65	
36. Keralamudali	158	482	460	942	1294	3948	3770	7718	
37. Komaran	11	41	36	7	90	336	296	632	
38. Koppalavelamas	2	5	8	13	16	41	65	106	
39. Koteyar	159	453	393	851	1300	3745	3214	6959	
40. Kshetriya	189	659	724	1383	1551	5403	5938	11341	
41. Krishnavaka	3	8	10	18	26	67	84	151	
42. Kudumbis	1935	5928	5971	11899	15707	48140	48484	96624	
43. Kusavan	995	3011	3069	6080	8142	24646	25129	49775	
44. Madlvala	7	32	28	60	57	261	228	489	
45. Malai Panicker	12	29	27	56	98	236	220	456	
46. Maharastrian	7	19	18	37	58	155	147	302	
47. Mallar	3	5	8	13	24	41	65	106	
48. Maniyan	13	26	36	62	107	214	296	510	
49. Maravan	641	1628	1709	3337	5266	13373	14041	27414	

Table - 1 (Contd.....)

C. I-HINDUS (Contd.....)

	1	2	3	4	5	6	7	8	9
<u>VI. Throughout the State</u>									
50. Maruthuvar	11	39	31	70	91	321	254	575	
51. Mogaveera	37	107	134	241	302	873	1093	1966	
52. Moilā	5	10	16	26	41	82	131	213	
53. Mooliyas	90	323	295	618	734	2636	2407	5043	
54. Moovari	83	248	245	493	679	2029	2004	4033	
55. Mudaliyar	256	609	654	1263	2089	4973	5336	10309	
56. Mukkulan	3	10	5	15	24	82	41	123	
57. Mupper	55	127	137	264	452	1043	1125	2168	
58. Muthraj	4	5	8	13	33	41	65	106	
59. Naidu	166	489	466	955	1355	3994	3806	7800	
60. Naikkans	703	2047	2048	4095	5722	16672	16690	33362	
61. Nair	58925	172294	181197	353491	482525	1410968	1484255	2895223	
62. Nedungadi	218	586	707	1293	1779	4782	5770	10552	
63. Padiyachi	3	6	7	13	24	49	57	106	
64. Pandi Sudra	7	15	21	36	56	122	168	290	
65. Panji	2	3	5	8	16	24	41	65	
66. Paradesi	1	3	2	5	8	24	16	40	
67. Parisaivar	18	65	56	121	151	543	468	1011	
68. Parivara Bunt of									
South Canara	81	311	315	606	661	2538	2407	4945	
69. Parkavakulam	4	11	17	18	33	90	57	147	
70. Peruvannan	542	1773	1761	3556	4438	14533	14577	29110	
71. Pulloon	3	8	7	15	24	65	57	122	
72. Pulluvan	138	355	377	732	1122	2888	3071	5959	
73. Puruzhua	10	35	29	64	82	286	237	523	
74. Reddiar	57	160	173	333	475	1332	1437	2769	
75. Saiva Vellala	764	2219	2323	4542	6269	18207	19067	37274	
76. Saliyas	1569	5246	5357	10603	12817	42861	43770	86631	
77. Senai Thalavar	3	12	6	18	16	99	49	148	
78. Shetty	289	940	897	1837	2356	7663	7113	14976	
79. Tholkollan	6	18	17	35	49	148	140	288	
80. Thottiyar	6	16	10	26	49	130	82	212	

Table - 1 (Contd.....)

C-I-HINDUS (Contd.....)

	1	2	3	4	5	6	7	8	9
<u>VI. Throughout the State</u>									
81. Ural Gounder	1	5	2	7	8	41	16	57	
82. Vazhuvans	158	397	455	852	1296	3258	3735	6993	
83. Vaisya	23	73	76	149	188	597	620	1217	
84. Vakkaliga	8	21	19	40	65	171	155	326	
85. Vallayanjazhy	13	41	38	79	106	337	311	648	
86. Veerajaivan	863	2587	2626	5213	7231	21203	21530	42733	
87. Velan Chettiar	53	145	122	267	432	1185	999	2184	
88. Vellala	529	1483	1579	3062	4321	12143	12889	25032	
89. Veluthedathu Nair	834	2579	2690	5269	6829	21117	22027	43144	
90. Vilakkathala Nair	1406	4298	4528	8826	11498	35150	37039	72189	
91. Virakodi Vellalar	1	7	5	12	8	57	41	98	
92. Yadavas	1386	4160	4214	8374	11335	34022	34466	68488	
93. Yogi Kurukkal	30	90	97	187	245	734	792	1526	
<u>C. II - CHRISTIANS</u>									
<u>Throughout the State</u>									
1. Anglo Indian	548	1763	1915	3678	4437	14263	15493	29756	
2. Chaldean Syrian Chris- tian	74	316	308	624	633	2702	2631	5333	
3. C.S.I.	4189	11668	11910	23578	34191	95249	97247	192496	
4. Evangelical Church	217	665	677	1342	1779	5449	5549	10998	
5. Independent Syrians	29	79	86	165	238	-647	704	1351	
66 Jacobites	15008	46022	46540	92562	123010	377200	381471	758671	
7. Latin Catholic	14402	44434	45438	89872	117183	361552	369655	731207	
8. Marthomites	6371	19101	19583	38684	52269	156704	160643	317347	
9. O.D.C.	1708	4950	5119	10069	13992	40562	41946	82508	
10. S.C. converts to Xitanity	6675	18252	18633	36885	54610	149400	152512	301912	
11. S.T. do.	181	547	545	1092	1486	4492	4475	8967	
12. SIUC	315	902	860	1762	2562	7334	6993	14327	
13. Syrian Catholics	32742	109104	110333	219437	268680	895403	905710	1801113	

Table - 1 (Contd.....)

C-III- MUSLIMS

	1	2	3	4	5	6	7	8	9
Muslims		70755	232764	236758	469522	578907	1904843	1937479	3842322
			Throughout the State						
			IV. OTHERS						
1. Gurkhas	7	18	18	36	57	148	148	148	296
2. Jains	36	104	95	199	292	846	771	771	1617
3. Jews	6	23	19	42	48	184	151	151	335
4. Parsi	1	2	3	5	9	17	26	26	43
5. Sikhs	3	6	5	11	24	49	41	41	90
Communities other than Scheduled Castes & Scheduled Tribes - T O T A L	356054	1101365	1130098	2231463	2914581	9017018	9252949	9252949	18269967
STATE	395745	1211133	1243054	2454187	3239395	9915281	10177353	10177353	20092634

AVERAGE HOUSEHOLD SIZE OF DIFFERENT CASTES/COMMUNITIESA. SCHEDULED CASTESI. Throughout the States

1	Household enumerated	Percent- age Popu- lation	Household size (Esti- mated)		
			Male	Female	Total
	2	3	4	5	6
1. Chakkiliyan	524	00.11265	2.60	2.71	5.31
2. Kuravan/Sidhanar	4071	00.84936	2.50	2.62	5.12
3. Nayadi	32	00.00755	2.79	3.05	5.84
4. Pallan	91	00.01898	2.44	2.66	5.10
5. Parayan/Samavar	3314	00.74080	2.70	2.78	5.48
6. Valluvan	263	00.06189	2.84	2.95	5.79

II. Throughout the State except Kasargod Taluk of Malabar District

1. Kanakkan or Pandanna	2810	00.69292	2.97	3.08	6.05
2. Panan	622	00.14813	2.87	2.98	5.85

III. Throughout the State except Malabar District (Excluding Kasargod Taluk):

1. Paravan	505	00.11996	2.97	2.87	5.84
------------	-----	----------	------	------	------

IV. Throughout the State except Malabar District

1. Ayyanavar	41	00.00841	2.90	2.19	5.09
2. Bharathar	18	00.00508	2.72	4.17	6.89
3. Boyan	51	00.01056	2.32	2.83	5.15
4. Kakkalan	93	00.02254	2.97	2.98	5.95
5. Kavara	56	00.01442	3.08	3.22	6.30
6. Kootan (Koodan)	29	00.00612	2.45	2.72	5.17
7. Mannan	1637	00.40210	3.00	3.03	6.03
8. Padannan	31	00.00761	2.74	3.20	5.94
9. Pathiyan	142	00.03956	3.39	3.45	6.84
10. Pulayan or Cheramar	12251	02.79297	2.76	2.83	5.59
11. Thandan	2194	00.55715	3.09	3.15	6.24
12. Ulladan	96	00.02111	2.58	2.80	5.38
13. Uraly	137	00.02514	2.28	2.23	4.51
14. Vallon	2	00.00065	3.06	5.13	8.19
15. Vetan	427	00.08334	2.44	2.37	4.81
16. Vetuvan	524	00.13002	3.02	3.05	6.07

V. In Malabar District

1. Adi Dravida	10	00.00187	1.79	2.79	4.58
2. Adi Karnataka	110	00.02138	2.54	2.23	4.77
3. Arunthathiyar	1	00.00016	2.00	2.00	4.00
4. Baira	1	00.00028	4.12	3.00	7.12
5. Bakuda	12	00.00268	3.50	2.00	5.50
6. Bandi	3	00.00054	2.96	1.36	4.32
7. Cheruman	3057	00.68222	2.64	2.84	5.48
8. Holey	139	00.04658	3.97	4.28	8.25
9. Kalladi	502	00.11968	2.87	3.02	5.89
10. Karimpalan	72	00.01342	2.41	2.16	4.57
11. Kudumban	1	00.00016	2.00	2.00	4.00

Contd.....

Table - 2 (contd...)

1	2	3	4	5	6
12. Maila	23	00.00672	3.57	3.61	7.18
13. Mavilan	3	00.00093	4.75	3.04	7.79
14. Moger	37	00.00911	3.08	2.98	6.06
15. Mundala	17	00.00451	2.99	3.53	6.52
16. Samagara	5	00.00110	3.39	2.00	5.39
17. Semman	13	00.00281	2.55	2.78	5.33
18. Thotti	4	00.00075	2.94	1.47	4.41

VI. In Malabar District excluding Kasargod Taluk

1. Gavara	62	00.01478	2.96	2.87	5.83
2. Malayan	203	00.04559	2.74	2.77	5.51
SCHEDULED CASTES	34236	7.85419	2.77	2.86	5.63

B. SCHEDULED TRIBES

I. Throughout the State

1. Kadar	46	00.00865	2.30	2.30	4.60
2. Irrular-Irrulan	191	00.03507	2.18	2.31	4.49
3. Muthuvan/Mudugar	23	00.00385	1.79	2.31	4.10

II. Throughout the State except Malabar District

1. Kanikkaran	259	00.04997	2.42	2.36	4.78
2. Kochuvelan	2	00.00049	3.62	2.56	6.18
3. Malai Arayan	1	00.00041	5.12	5.12	10.24
4. Malai Pandaram	3	00.00085	4.08	3.04	7.12
5. Malayan	55	00.01032	2.40	2.31	4.71
6. Malai Vedan	1	00.00040	3.00	7.12	10.12
7. Malayarayar	220	00.04413	2.58	2.36	4.94
8. Palleyan	28	00.00516	2.43	2.07	4.50
9. Palliyar	274	00.05931	2.71	2.58	5.29
10. Hilladan (Hill Dwellers)	25	00.00523	2.64	2.48	5.12

III. In Malabar District

1. Adiyar	285	00.06834	2.90	3.00	5.90
2. Kurichichan	218	00.05495	3.15	3.05	6.20
3. Kurumans	475	00.09358	2.45	2.42	4.87
4. Paniyan	853	00.17903	2.53	2.64	5.17
5. Pulayan	2359	00.55450	2.82	2.95	5.77

IV. In Malabar District (Excluding Kasargod taluk

1. Kurumbas	56	00.01168	2.57	2.57	5.14
-------------	----	----------	------	------	------

V. In Kasargod taluk of Malabar District

1. Marati	81	00.03123	4.78	4.71	9.49
SCHEDULED TRIBE - Total	5455	1.21715	2.72	2.77	5.49

Contd.....

	1	2	3	4	5	6
<u>C-I-HINDUS</u>						
<u>I. Throughout the State except Malabar District</u>						
1. Adi Dravida	1	00.00041	4.13	6.12	10.25	
2. Arunthathiyar	1	00.00016	1.00	3.12	4.12	
3. Chamar/Muchi	1	00.00020	3.13	2.00	5.13	
4. Cheruman	434	00.09609	2.73	2.77	5.50	
5. Kudumban	782	00.17709	2.75	2.79	5.54	
6. Semman	8	00.00181	3.14	2.36	5.50	
7. Thotti	13	00.00246	2.46	2.16	4.62	
8. Kattunayakan	2	00.00041	3.06	2.06	5.12	
9. Paniyan	1	00.00012	1.00	2.00	3.00	
<u>II. Throughout the State except Malabar District</u> (excluding Kasargod taluk)						
1. Kurumba	39	00.00606	1.88	1.93	3.81	
<u>III. In Malabar District</u>						
1. Bhrathar	1	00.00028	4.12	3.00	7.12	
2. Boyan	43	00.00881	2.46	2.55	5.01	
3. Koodan	217	00.04823	2.67	2.75	5.44	
4. Padannan	11	00.00280	2.83	3.28	6.11	
5. Palluvan	2	00.00020	1.00	1.56	2.56	
6. Mannan	776	00.19461	3.00	3.15	6.15	
7. Thandan	302	00.06793	2.66	2.84	5.50	
8. Urali	40	00.00696	2.25	2.05	4.30	
9. Vallon	6	00.00140	2.80	2.84	5.64	
10. Vettuvan	743	00.18534	2.95	3.06	6.01	
<u>IV. In Malabar District excluding Kasargod Taluk</u>						
1- Paravan	121	00.03395	3.30	3.58	6.88	
<u>V. In Kasargod Taluk of Malabar District</u>						
1- Malayan	6	00.00211	4.32	4.32	8.64	
Communities in specified areas - sub-Total	3550	0.83743	2.83	2.93	5.76	
<u>VI. Throughout the State</u>						
1. Aduthon	1	00.00024	4.13	2.00	6.13	
2. Agasa	8	00.00195	3.14	2.89	6.03	
3. Ambalavasi	843	00.21611	3.07	3.21	6.28	
4. Ammukudakan	2	00.00020	1.56	1.00	2.56	
5. Arayan	3818	01.02452	3.28	3.30	6.58	
6. Ballal	18	00.00845	5.33	6.21	11.54	
7. Bandari	19	00.00572	4.31	3.10	7.41	
8. Brahmin	5909	01.45729	3.31	3.34	6.65	
9. Chakkalan	2690	00.73035	3.25	3.45	6.70	
10. Chakkamar	152	00.03784	2.89	3.21	6.10	
11. Chalamar	9	00.00177	2.81	2.14	4.95	
12. Chetties	1895	00.43951	2.79	2.90	5.69	
13. Choyi	7	00.00162	2.86	2.86	5.72	
14. Coorg	6	00.00082	1.84	1.84	3.68	
15. Devadiga	2	00.00033	1.56	2.56	4.12	

Table-2 (contd...)

	1	2	3	4	5	6
16. Erayar		6	00.00125	2.49	2.65	5.14
17. Ezhavas		88160	22.18629	3.04	3.13	6.17
18. Ezhavathy		640	00.16388	3.10	3.19	6.29
19. Ezhuthachan		1467	00.36225	2.89	3.14	6.03
20. Gowda		138	00.03544	3.29	3.04	6.33
21. Gownder		828	00.16373	2.42	2.48	4.90
22. Gupta		128	00.02860	2.62	2.85	5.47
23. Halukuruba		2	00.00045	2.56	3.06	5.62
24. Heggade		8	00.00193	3.03	3.03	6.06
25. Hindu Madiyar		2	00.00025	1.56	1.56	3.12
*26. Hindu Nadar		3400	00.77353	2.85	2.78	5.63
*28. Kalari Kurup		171	00.04754	3.35	3.48	6.83
29. Kallan		18	00.00465	3.16	3.16	6.32
30. Kammalas		14283	03.76346	3.21	3.25	6.46
31. Kanisu		942	00.24489	3.18	3.20	6.38
32. Kannadians		52	00.00932	2.12	2.31	4.43
33. Kavathi		98	00.02210	3.31	2.85	6.16
34. Kavudiyaru		1	00.00028	4.13	3.00	7.13
35. Kelasi		1	00.00032	5.13	3.00	8.13
36. Keralamudali		158	00.03841	3.05	2.91	5.96
37. Komaran		11	00.00315	3.73	3.29	7.02
38. Koppalayelamas		2	00.00053	2.56	4.06	6.62
39. Koteyar		159	00.03463	2.88	2.47	5.35
40. Kshetriya		189	00.05644	3.48	3.83	7.31
41. Krishavaka		3	00.00075	2.58	3.23	5.81
42. Kudumbis		1935	00.48089	3.06	3.09	6.15
43. Kusavan		995	00.24773	3.03	3.09	6.12
44. Madivala		7	00.00243	4.58	4.00	8.58
45. Malai Panicker		12	00.00227	2.41	2.24	4.65
46. Maharastrian		7	00.00150	2.67	2.53	5.20
47. Mallar		3	00.00053	1.70	2.71	4.41
48. Maniyan		13	00.00254	2.00	2.77	4.77
49. Maravan		641	00.13644	2.54	2.67	5.21
50. Maruthuvar		11	00.00286	3.53	2.79	6.32
51. Mogaveera		37	00.00978	2.89	3.62	6.51
52. Moili		5	00.00106	2.00	3.20	5.20
53. Mooliyas		90	00.02510	3.59	3.28	6.87
54. Moovari		83	00.02007	2.99	2.95	5.94
55. Mudaliyar		256	00.05131	2.38	2.55	4.93
56. Mukkulan		3	00.00061	3.42	1.71	5.13
57. Mupper		55	00.01079	2.31	2.49	4.80
58. Muthraj		4	00.00053	1.24	1.97	3.21
59. Naidu		166	00.03882	2.95	2.81	5.76
60. Naikkans		703	00.16604	2.91	2.92	5.83
61. Nair		58925	14.40938	2.92	3.08	6.00
62. Nedumgadi		218	00.05252	2.69	3.24	5.93
63. Padiyachi		3	00.00053	2.04	2.37	4.41
64. Pandi sudra		7	00.00144	2.18	3.00	5.18
65. Panji		2	00.00032	1.50	2.56	4.06
66. Paradesi		1	00.00020	3.00	2.00	5.00
67. Parisaivar		18	00.00503	3.60	3.10	6.70
68. ParivaraBunt of South Canara		81	00.02461	3.84	3.64	7.48
69. Parkavakulam		4	00.00073	2.73	1.73	4.46
70. Peruvannan		542	00.14488	3.27	3.28	6.55
71. Pulloon		3	00.00061	2.71	2.38	5.09
72. Pulluvan		138	00.02966	2.57	2.74	5.31
*73. Puruzua		10	00.00260	3.49	2.89	6.38
*27. Jogi		14	00.0464	3.81	4.38	8.19

-Contd.

1	2	3	4	5	6
74. Reddiar	57	00.01378	2.80	3.03	5.83
75. Saiva Vellala	764	00.18551	2.90	3.04	5.94
76. Saliyas	1569	00.43116	3.34	3.41	6.75
77. Senai Thalavar	3	00.00074	6.19	3.06	9.25
78. Shetty	289	00.07453	3.25	3.10	6.35
79. Tholkollan	6	00.00143	3.02	2.86	5.88
80. Thottiyar	6	00.00106	2.65	1.67	4.32
81. Ural Gounder	1	00.00028	5.12	2.00	7.12
82. Vazhuvans	158	00.03480	2.51	2.88	5.39
83. Vaisya	23	00.00605	3.18	3.30	6.48
84. Vakkaliga	8	00.00162	2.63	2.38	5.01
85. Valayanjazhy	13	00.00323	3.18	2.93	6.11
86. Veerasaivan	863	00.21268	2.93	2.98	5.91
87. Velan Chettiar	53	00.01087	2.74	2.31	5.05
88. Vellala	529	00.12458	2.81	2.98	5.79
89. Veluthedathu Nair	834	00.21473	3.09	3.23	6.32
90. Vilakkathala Nair	1406	00.35928	3.06	3.22	6.28
91. Verakodi Vellalar	1	00.00049	7.12	5.13	12.25
92. Yadavas	1380	00.34086	3.00	3.04	6.04
93. Yogi Kurukkal	30	00.00759	3.00	3.23	6.23

C-II-CHRISTIANS

Throughout the State

1. Anglo Indian	548	00.14809	3.21	3.49	6.70
2. Syrian Christian	74	00.02654	4.27	4.16	8.43
3. C.S.I.	4189	00.95804	2.79	2.84	5.63
4. Evangelical Church	217	00.05474	3.06	3.12	6.18
5. Independant syrians	29	00.00672	2.72	2.96	5.68
6. Jacobites	15008	03.77587	3.07	3.10	6.17
7. Latin Catholic	14402	03.63918	3.09	3.15	6.24
8. Marthomites	6371	01.57942	3.00	3.07	6.07
9. O.D.C.	1708	00.41064	2.90	3.00	5.90
10. S.C.converts to X'tanity	6675	01.50260	2.74	2.79	5.53
11. S.T.converts to X'tanity	181	00.04463	3.02	3.01	6.03
12. S.I.U.C.	315	00.07130	2.86	2.73	5.59
13. Syrian Catholics	32742	08.96405	3.33	3.37	6.70

C-III-MUSLIMS

1. Muslims	70755	19.12305	3.29	3.35	6.64
------------	-------	----------	------	------	------

C-IV. OTHERS

1. Gurkhas	7	00.00147	2.60	2.60	5.20
2. Jains	36	00.00805	2.90	2.64	5.54
3. Jews	6	00.00167	3.83	3.15	6.98
4. Parsi	1	00.00021	1.89	2.89	4.78
55. Sikhs	3	00.00045	2.04	1.71	3.75
Communities other than S.C. & S.T. - TOTAL	356054	90.92866	3.09	3.17	6.26
S T A T E	395745	100.00	3.06	3.14	6.20

SAMPLE SIZE - STATE TOTAL.

Table-3.

Particulars	Number Enumerated			Person
	House- hold	Male	Female	
Hindus	29318	88780	90403	179183
Other Hindus	912	2606	2756	5362
Christians	11014	33249	33056	66305
Muslims	7817	24837	24211	49048
Gurkhas	7	19	19	38
Jains	16	43	45	88
Jews	3	14	14	28
Parsi	1	2	3	5
Sikhs	3	5	5	10
Sub-Total	49091	149555	150512	300067
Scheduled Castes	7354	20976	21033	42009
Scheduled Tribes	870	2515	2436	4951
Grand Total	57315	173046	173981	347027

Table-3 (Contd..)

Caste/Community	Number Enumerated			
	House hold	Male	Female	Person
1	2	3	4	5
A. Scheduled Caste				
(i) Throughout the State				
1. Chakkiliyan	92	227	244	471
2. Kuravan	615	1544	1561	3105
3. Nayadi	19	55	66	121
4. Pallan	21	48	60	108
5. Parayan	888	2413	2387	4800
6. Vallauvan	71	240	219	459
ii) Throughout the State except Kasargod Taluk				
1. Kanakkan	489	1494	1508	3002
2. Panan	385	1126	1109	2235
iii) Throughout the State except Malabar District excluding Kasargod Taluk.				
1. Paravan	219	672	658	1330
iv) Throughout the State except Malabar District				
1. Ayyanavar	19	57	49	106
2. Bharathar	12	39	46	85
3. Boyan	15	39	40	79
4. Kakkalan	53	186	164	350
5. Kavara	21	64	59	123
6. Koodan	6	14	12	26
7. Mannan	875	2693	2692	5385
8. Padaman	3	8	10	18
9. Pathiyan	77	256	264	520
10. Pulayan	1815	4965	5077	10042
11. Thandan	504	1518	1538	3056
12. Ulladan	74	185	198	383
13. Uraly	16	42	42	84
14. Vallon	2	6	10	16
15. Vetan	114	297	262	559
16. Vetuvan	122	378	370	748

(Contd....)

Table-3: (Contd..)

1	2	3	4	5
(v) <u>In Malabar District</u>				
1) Adi Dravida	3	4	10	14
2) Adi Karnataka	15	53	41	94
3) Arunthathiyar	1	2	2	4
4) Chaiira	1	4	3	7
5) Bakuda	6	21	7	28
6) Bendi	3	8	2	10
7) Cheruman	453	1304	1303	2607
8) Pulaya	11	39	37	76
9) Kalladi	109	320	322	642
10) Karimpalan	19	48	42	8
11) Kudumban	1	2	2	4
12) Mailla	3	9	8	17
13) Mavilan	3	15	8	23
14) Moger	13	42	42	84
15) Mundala	6	15	18	31
16) Samagara	5	18	11	29
17) Semman	6	11	17	28
18) Thotti	3	8	6	14

vi) In Malabar District excluding Kasargod Taluk

1) Gavara	38	111	110	221
2) Malayan	128	378	397	775

B - SCHEDULED TRIBE.i) Throughout the State

1) Kadar	7	17	17	34
2) Irruler	19	52	40	92
3) Muthuvan	6	9	14	23

ii) Throughout the State except Malabar District.

1) Kanikkaran	26	75	64	139
2) Kochuvolan	2	6	6	12
3) Malayarayan	1	5	5	10
4) Malai Pandaram	3	12	9	21
5) Malai Vedan	5	3	7	10
6) Malayan	16	38	37	75
7) Malayarayar	29	72	68	140
8) Palleian	3	5	7	12

(Contd....)

Table-3 (Contd..)

1	2	3	4	5
9) Palliyar	23	90	79	169
10) Ulladan (Hill Dwellers)	9	23	23	46

iii) In Malabar District.

1) Adiyar	54	166	165	331
2) Kurichichan	38	145	138	283
3) Kurumans	55	134	124	258
4) Paniyan	120	328	309	637
5) Pulayan	434	1250	1252	2502

iv) In Malabar District excluding Kasargod Taluk

1) Kurumbas	10	31	27	58
-------------	----	----	----	----

v) In Kasargod Taluk

1) Marati	14	54	45	99
-----------	----	----	----	----

C. COMMUNITIES OTHER THAN SCHEDULED CASTES AND SCHEDULED TRIBES.C-1- HINDUSi) Throughout the State.

1) Aduthon	1	4	2	6
2) Agasa	7	17	20	37
3) Ambalavasi	558	1826	1791	3617
4) Amuloudakan	2	3	2	5
5) Arayan	553	1765	1831	3596
6) Ballal	3	7	6	13
7) Bandari	15	62	45	107
8) Brahmin	1461	4448	4429	8877
9) Chakkalan	818	2458	2523	4981
10) Chakamar	49	148	155	303
11) Chalamar	3	6	5	11
12) Chetties	535	1587	1608	3195
13) Choyi	7	21	21	42
14) Coorg	5	9	9	18
15) Devadiga	4	6	10	16
16) Erayar	5	13	15	28
17) Ezhavas	9163	27522	28017	55539
18) Ezhavathy	487	1525	1556	3081

Table-3 (Contd..)

1	2	3	4	5
19) Ezhuthachan	303	871	916	1787
20) Gowda	33	109	105	214
21) Gownder	114	303	277	580
22) Gupta	20	65	66	131
23) Halukuruba	2	5	6	11
24) Heggade	7	23	20	43
25) Hindu Madiyar	2	4	2	6
26) Hindu Nadar	469	1273	1204	2477
27) Jogi	3	8	10	18
28) Kalari Kurup	101	340	370	710
29) Kallan	16	49	47	96
30) Kammalas	2976	9564	9611	19175
31) Kanisu	723	2118	2102	4220
32) Kannadians	7	13	17	30
33) Kavathy	26	77	66	143
34) Kavudiyaru	1	4	3	7
35) Kalasi	1	5	3	8
36) Kerala Mudali	19	59	49	108
37) Komaran	11	44	35	79
38) Koppala Velamar	2	5	8	13
39) Koteyar	27	68	77	145
40) Kshatriya	87	215	263	478
41) Krishna vaka	3	8	10	18
42) Kudumbis	303	881	880	1761
43) Kusavan	341	1040	1063	2103
44) Madivala	6	28	19	47
45) Malai Panicker	5	14	13	27
46) Maharashtra	7	21	17	38
47) Mallar	3	6	7	13
48) Maniyan	3	6	8	14
49) Maravan	100	246	272	518
50) Maruthavar	11	36	29	65
51) Magaveera	7	34	25	59
52) Moili	5	10	16	26
53) Mooliyas	19	67	59	126
54) Moovari	23	70	62	132
55) Mudalayar	38	90	83	173
56) Mikulan	3	10	5	15
57) Mupper	6	19	13	32
58) Muthu Ray	3	4	4	8

Table-3 (Contd..)

1	2	3	4	5
59. Naidu	85	258	236	494
60. Naikkans	173	475	477	952
61. Nair	5995	18362	18788	37150
62. Nedumgadi	109	303	354	657
63. Padiyachi	3	6	7	13
64. Pandi sudra	7	16	21	37
65. Panji	2	3	5	8
66. Paradesi	1	3	2	5
67. Parisaivar	8	31	24	55
68. Parivarabunt	29	96	96	192
69. Parkavakulam	4	11	6	17
70. Peruvannan	306	988	1019	2007
71. Pullon	3	8	7	15
72. Pulluvan	60	145	174	319
73. Puruzha	7	19	21	40
74. Reddiar	43	110	125	235
75. Sivavellaln	181	520	598	1118
76. Saliyas	309	1021	1019	2040
77. Senai Thalavar	3	10	6	16
78. Shetty	43	139	126	265
79. Tholkollan	4	10	12	22
80. Kottiyar	3	9	7	16
81. Ural Gounder	1	2	1	3
82. Vazhuvan	33	99	93	192
83. Vaisya	15	51	53	104
84. Vaikaliga	3	5	7	12
85. Valayangozhy	9	29	25	54
86. Veerasivan	403	1239	1201	2440
87. Velan Chettiyar	14	37	33	70
88. Vellalar	196	496	511	1007
89. Veluthedathu Nair	574	1755	1794	3549
90. Velakithala Nair	921	2826	2930	5756
91. Veerakodi Vellalar	1	7	5	12
92. Yadavas	243	402	674	1076
93. Yogi Kurukkal	16	54	61	115

C-II HINDUS (ii) Throught the State Except Malabar Taluk

1. Adi Dravida	1	4	6	10
2. Arumthathiyar	1	1	3	4

(Contd...)

Table-3 (Contd..)

1	2	3	4	5
3. Chamar	1	3	2	5
4. Cheruman	63	162	193	355
5. Kudimban	91	241	234	475
6. Somman	7	21	16	37
7. Thotty	3	8	6	14
8. Kattunayakan	2	5	4	9
9. Paniyan	1	1	2	3

iii) Throughout the State except Malabar District
excluding Kasargod Taluk.

1. Kurumba	8	14	16	30
------------	---	----	----	----

iv) In Malabar District

1. Bharayar	1	3	1	4
2. Boyan	9	29	29	58
3. Koodan	19	52	44	96
4. Padannan	4	6	12	18
5. Palluvan	2	3	4	7
6. Mannan	436	1271	1339	2610
7. Thandan	48	132	145	277
8. Uraly	13	30	30	60
9. Vallon	4	10	10	20
10. Vettuvan	129	374	408	782

v) In Malabar District excluding Kasargod Taluk

1. Paravan	65	216	229	445
------------	----	-----	-----	-----

iv) In Kasargod Taluk

1. Malayan	6	20	23	43
------------	---	----	----	----

C-II. CHRISTIANS.

1. Anglo Indian	153	506	511	1017
2. Syrian Christians	23	94	98	192
3. C.S.I.	792	2222	2186	4408
4. Evangelical Church	96	295	269	564
5. Independant Syrians	15	44	51	95

(Contd.....)

Table-3 (Contd..)

1	2	3	4	5
6. Jacobites	1903	5525	5662	11187
7. Latin Christians	1759	5432	5245	10677
8. Marthomites	944	2727	2780	5507
9. O.D.C	571	1588	1638	3226
10. S.C. converted to Christianity	1022	2791	2746	5537
11. S.T. converted to Christianity	15	54	38	92
12. S.I.U.C.	64	189	169	358
13. Syrian Catholics	3657	11782	11663	23445

C-III- Muslims.

1. Muslims	7817	24837	24211	49048
------------	------	-------	-------	-------

C-iv-Others.

1. Gurkhas	7	19	19	38
2. Jains	16	43	45	88
3. Jews	3	14	14	28
4. Parsi	1	2	3	5
5. Sikhs	3	5	5	10

A. SCHEDULED CASTES

(11) Through the State except Kasargod Taluk of Malabar District

Household size	CASTE	
	PARTICULARS	Panan
0	1	2
1.	1.80	4.28
2.	4.08	8.06
3.	8.66	10.86
4.	11.33	11.18
5.	14.86	14.14
6.	19.01	16.45
7.	17.82	13.49
8.	8.73	7.40
9.	7.79	7.24
10.	2.42	2.80
Above 10	3.50	4.10
TOTAL	100.00	100.00

A. SCHULJIED CASTES : 35 : Table-4 (contd....)
 (iii) Throughout the State except Malabar District (excluding Kasargod Taluk)

Household size	CASTE PARTICULARS	
	0	Paravan
1.	5.12	
2.	4.82	
3.	6.10	
4.	12.60	
5.	8.86	
6.	21.85	
7.	17.52	
8.	14.17	
9.	5.71	
10.	1.18	
Above 10	1.97	
TOTAL	100.00	

A. SCHEDULED CASTES

(iv) Throughout the State except Malabar District

PARTICULARS	Household size									
	1	2	3	4	5	6	7	8	9	10
1.	1.56	..	13.79	1.71	0.70
2.	12.82	3.87	0.70
3.	23.08	12.50	11.11	17.19	10.17	..	11.35	32.50	14.23	8.45
4.	5.13	12.50	31.11	17.18	16.95	13.79	11.92	12.68
5.	7.69	12.50	11.11	12.50	18.64	51.73	16.87	18.31
6.	2.56	6.25	33.34	10.94	27.13	20.69	15.22	15.49
7.	30.78	18.75	..	18.75	10.17	..	13.50	33.33	33.33	20.42
8.	2.56	25.00	4.44	7.81	6.78	..	11.86	7.75
9.	15.38	..	8.89	6.25	1.69	..	7.23	7.75
10.	4.69	8.47	..	3.74	3.52
Above 10.	..	12.50	..	3.13
TOTAL	100.00	100.00	100.00	100.00	100.00	100.00	100.00	100.00	100.00	100.00

Contd.....

A. SCHEDULED CASTES.

(v) In Malabar District

Particulars	CASTE									
	1	2	3	4	5	6	7	8	9	10
	Adi Dravida	Adi	Aruntha	Baira	Bakuda	Bandi	Cheruman	Holeva	Kalladi	
	Karnataka	Karnataka	Thiyar							
Household size	1	2	3	4	5	6	7	8	9	
1.	33.34	1.99	2.35
2.	..	16.26	6.32	14.18	3.53	..
3.	..	8.94	50.00	..	9.69	20.57	8.24	..
4.	30.00	..	100.00	..	8.34	33.33	16.87	1.42	14.90	..
5.	..	1.63	8.33	33.33	15.88	21.28	22.34	..
6.	70.00	24.39	8.33	..	18.72	14.18	14.71	..
7.	..	8.13	25.00	..	12.90	2.84	15.69	..
8.	..	8.13	5.13	9.22	4.12	..
9.	..	8.13	..	100.00	6.51	16.31	9.61	..
10.	..	16.26	1.89	..	0.59	..
Above 10	..	8.13	4.10	..	3.92	..
TOTAL	100.00	100.00	100.00	100.00	100.00	100.00	100.00	100.00	100.00	100.00

Confid....

A. SCHEDULED CASTES ; 40 : Table-4 (contd.)
 (vi) In Malabar District (Excluding Kasargod Taluk)

Household size	CASTES		
	Gavara	Malayan	
	PARTICULARS		
0	1	2	
1	1.79	2.20	
2	7.14	2.20	
3	1.79	3.30	
4	16.07	15.93	
5	16.07	18.68	
6	30.36	18.68	
7	10.71	21.42	
8	3.57	3.30	
9	3.57	7.14	
10.	..	2.20	
Above 10	8.93	4.95	
TOTAL	100.00	100.00	

3. SCHEDULE TRIBES

Table - 4 (contd...)

: 41 :

(1) Throughout the State

PARTICULARS	CASTS			Muthuvan
	Kadar	Irrular		
0	1	2	3	
Household size				
1.	..	5.26	21.74	..
2.	..	5.26	..	13.04
3.	28.57	30.44
4.	28.57	26.33	..	13.04
5.	14.29	31.65	..	21.74
6.	14.29	21.05
7.	..	5.26
8.	..	5.26
9.	14.28
10.
Above 10
TOTAL	100.00	100.00	100.00	100.00

B. SCHEDULED TRIBES

(iii) In Malabar District

Household size	CASTE PARTICULARS				
	Adiyan	Kurichichan	Kurumans	Paniyan	Pulayan
1.	2.55	..	2.59	0.72	1.96
2.	2.19	0.45	6.91	5.86	7.57
3.	5.47	11.82	20.95	17.46	9.88
4.	13.51	8.64	19.87	19.50	13.31
5.	18.98	16.82	16.63	21.41	14.60
6.	7.66	22.73	18.57	14.95	16.27
7.	18.25	12.72	6.70	6.10	16.12
8.	6.57	10.91	2.16	6.10	11.21
9.	11.32	5.00	4.32	5.14	5.09
10.	11.31	0.91	..	1.56	2.70
Above 10 "	2.19	10.00	1.30	1.20	3.29
Total	100.00	100.00	100.00	100.00	100.00

B. SCHEDULED TRIBES

(iv) In Malabar District (excluding Kasargod taluk)

KURUMBAS

CASTE

PARTICULES

Household size

1.	..
2.	..
3.	19.64
4.	25.00
5.	37.50
6.	..
7.	17.86
8.	..
9.	..
10.	..
Above 10	..

TOTAL

100.00

B. SCHEDULED TRIBES

: 45 :

Table-4 (contd...)

(v) In Kasargod Taluk of Malabar District

CASTE
PARTICULARS
Marati

Household size

1.	..
2.	..
3.	16.00
4.	9.33
5.	13.33
6.	26.67
7.	..
8.	17.33
9.	6.67
10.	8.00
Above 10	2.67

Total 100.00

C. COMMUNITIES OTHER THAN SCHEDULED CASTES AND SCHEDULED TRIBES

46

Table-4 (contd...)

C.I. HINDUS (1) Throughout the State	CASTE									
	Aduthon	Agasa	Ambalavasi	Ammukudakan	Arayan	Ballal	Bandari	Brahmin	Chakkalan	
0	1	2	3	4	5	6	7	8	9	
Household size										
1.	3.57	50.00	1.38	3.57	1.70	
2.	6.07	..	3.47	33.33	..	6.94	5.98	
3.	..	12.50	11.31	..	4.95	..	5.26	9.49	10.30	
4.	..	37.50	10.83	50.00	8.76	..	5.26	14.95	12.70	
5.	..	"	11.91	..	14.71	33.33	15.79	15.41	15.42	
6.	100.00	37.50	17.26	..	20.19	33.34	10.53	12.69	13.60	
7.	11.31	..	17.24	..	21.06	10.59	15.56	
8.	..	12.50	8.33	..	11.55	..	5.26	8.58	9.19	
9.	5.12	..	9.23	..	10.53	6.26	6.09	
10.	6.79	..	3.52	..	21.05	3.74	4.31	
Above 10	7.50	..	5.03	..	5.26	7.78	5.15	
TOTAL	100.00	100.00	100.00	100.00	100.00	100.0	100.00	100.00	100.00	100.00

Table-4 (Contd..)

C. COMMUNITIES OTHER THAN SCHEDULED CASTES AND SCHEDULED TRIBES.

CASTE PARTICULARS	51	52	53	54	55	56	57	58	59	60
	Mogaveera	Molli	Mooliyas	Moovari	Mudaliyar	Mukkulan	Moopper	wuthuraj	Naidu	Naikkars
1.	..	20.00	..	1.25	11.96	0.58	5.12
2.	10.21	8.75	29.35	..	16.67	..	9.88	5.88
3.	2.04	7.50	6.52	33.33	..	25.00	19.77	17.39
4.	..	20.00	10.21	3.75	13.04	..	33.33	75.00	12.21	14.58
5.	2.70	..	3.06	21.25	15.22	9.88	13.43
6.	8.10	40.00	8.16	12.50	4.35	66.67	16.67	..	6.40	15.60
7.	32.44	20.00	23.47	17.50	14.13	..	16.67	..	16.28	10.49
8.	11.22	3.75	2.17	8.14	5.75
9.	24.32	..	1.02	12.50	2.17	..	16.66	..	4.07	5.75
10.	20.40	..	1.09	8.72	3.58
Above 10	32.44	..	10.21	11.25	4.07	2.43
TOTAL	100.00	100.00	100.00	100.00	100.00	100.00	100.00	100.00	100.00	100.00

Contd....

Table-4 (Contd..)

COMMUNITIES OTHER THAN SCHEDULED CASTES & SCHEDULED TRIBES.

PARTICULARS	CASTE									
	Nair	Nedumgadi Padiyachi	Bandi	Panji	Paradesi	Parisaivar	Bunt of kulam	South	Cagara	Peruvannan
	61	62	63	64	65	66	67	68	69	70
1.	2.79	0.46	38.33	14.29	1.49
2.	5.57	10.19	50.00	..	5.55	..	25.00	4.47
3.	9.55	7.87	33.33	100.00	..	4.94	25.00	8.75
4.	14.06	13.43	..	14.28	3.70	25.00	12.48
5.	15.70	12.04	..	42.86	27.78	22.22	..	14.90
6.	14.77	17.59	50.00	19.75	..	14.70
7.	12.67	14.81	..	14.29	27.78	28.40	..	15.27
8.	8.92	5.09	16.67	6.17	..	11.92
9.	5.80	1.39	33.34	7.41	25.00	4.84
10.	3.61	8.80	..	14.28	2	2.47	..	2.61
Above 10.	5.16	8.33	22.22	4.94	..	8.57
TOTAL	100.00	100.00	100.00	100.00	100.00	100.00	100.00	100.00	100.00	100.00

Contd.....

Table-4 (Contd..)

: 53:
C. COMMUNITIES OTHER THAN SCHEDULED CASTE & SCHEDULED TRIBES

PARTICULARS	Senal Thalavar Shetty Tholkollan									
	71	72	73	74	75	76	77	78	79	
0	20.00	..	1.05	0.97
1.	20.00	8.77	3.40	3.10	..	6.31
2.	..	10.00	..	15.79	9.16	6.00	..	11.36
3.	..	17.50	..	15.79	9.03	10.65	33.33	17.98	7.00	..
4.	33.33	15.83	20.00	19.30	17.41	12.52	33.33	10.09	75.00	..
5.	33.34	12.50	30.00	10.53	18.85	17.05	..	12.31
6.	33.33	12.50	..	7.02	13.75	12.59	33.34	11.67	25.00	..
7.	..	8.34	..	5.26	16.88	13.36	..	3.79
8.	..	5.83	10.00	5.26	4.71	10.72	..	10.09
9.	..	1.67	20.00	5.26	3.80	2.65	..	9.46
10.	..	0.83	..	12.28	1.96	10.39	..	6.94
Above 10.	..	7.50
TOTAL	100.00	100.00	100.00	100.00	100.00	100.00	100.00	100.00	100.00	100.00

Contd....

C. COMMUNITIES OTHER THAN SCHEDULED CASTES & SCHEDULED TRIBES

Table-4 (Contd..)

PARTICULARS	Ural		Vazhuvans	Vaisya	Vakaliga	Vallayanjazhy	Veera-saivan	Velan Chettiar
	80	81						
0	4.35	37.50	..	1.32	7.55
1	3.77	4.80	18.87
2	6.29	17.39	..	25.00	9.24	10.98
3	18.24	16.67	13.58	22.64
4	66.67	..	25.79	..	37.50	8.32	11.16	..
5	33.33	..	29.56	..	25.00	..	17.89	26.42
6	10.06	17.39	..	16.67	9.72	3.77
7	4.40	34.78	..	16.67	16.09	3.77
8	1.26	21.74	..	16.67	7.56	..
9	0.63	4.35	4.68	..
10	3.96	..
Above 10
	100.00	100.00	100.00	100.00	100.00	100.00	100.00	100.00

Contd...

C. COMMUNITIES OTHER THAN SCHEDULED CASTE & SCHEDULED TRIBES

PARTICULARS	Virakodi			
	Vellala	Veluthedathl Nair	Vilakkithala Nair	Vellalar
0	88	89	90	91
1.	2.50	2.42	3.12	4.89
2.	3.40	6.91	4.04	3.87
3.	16.32	6.42	8.73	7.66
4.	17.53	14.30	12.14	14.76
5.	17.35	13.82	14.98	14.60
6.	12.52	15.52	14.83	13.50
7.	14.31	12.01	14.98	16.78
8.	4.29	9.82	9.58	10.36
9.	6.44	8.73	7.17	5.62
10.	2.86	4.00	4.97	4.38
Above 10	1.98	5.45	5.46	3.58
	100.00	100.00	100.00	100.00
	100.00	100.00	100.00	100.00
				92
				93

CASTE

Yadavas

Yogi Kurukkal

Table 4 (Contd..)

C. COMMUNITIES OTHER THAN SCHEDULED CASTES & SCHEDULED TRIBES

C-1-HINDUS (111) Through the State except Malabar District(excluding Kasargod Taluks)

Household size	CASTE/	
	PARTICULARS	Kurumba
0	1	
1.	..	
2.	..	
3.	45.45	
4.	2.27	
5.	52.28	
6.	..	
7.	..	
8.	..	
9.	..	
10.	..	
Above 10	..	
TOTAL		100.00

d. COMMUNITIES OTHER THAN SCHEDULED CASTES AND SCHEDULED TRIBES

C-I-HINDUS (v) In Malabar District excluding Kasargod Taluks

CASTE PARTICULARS	Paravan
Household size	
1.	3.30
2.	4.96
3.	0.83
4.	7.44
5.	19.01
6.	28.93
7.	12.40
8.	10.74
9.	5.78
10.	0.83
Above 10	5.78
TOTAL	100.00

Table-4 (Contd.)

C-I-Hindus (vi) In Kasargod Taluk of Malabar District

CASTE PARTICULARS	Malayan
Household size	
1.	..
2.	..
3.	16.67
4.	..
5.	..
6.	16.67
7.	33.33
8.	..
9.	16.66
10.	..
Above 10	16.67
TOTAL	100.00

Summary Table (4)

PERCENTAGE DISTRIBUTION OF HOUSEHOLDS ACCORDING TO SIZE

Household size	Scheduled Castes	Scheduled Tribes	Communities in specified areas	Communities other than Scheduled Castes and Scheduled Tribes	STATE
1	1.73	2.10	1.55	1.85	1.85
2	6.57	6.23	6.33	4.95	5.11
3	11.64	12.68	13.30	8.32	8.67
4	15.05	16.42	13.01	12.72	12.93
5	17.89	17.99	18.83	15.45	15.70
6	16.55	15.88	15.33	15.53	15.62
7	12.38	10.53	11.68	13.60	13.45
8	7.42	8.36	7.92	10.34	10.05
9	5.49	4.70	4.89	6.83	6.68
10	2.56	2.62	4.14	4.18	4.02
Above 10	2.72	2.49	3.02	6.23	5.87
ALL SIZES	100.00	100.00	100.00	100.00	100.00

A. SCHEDULED CASTES

(11) Throughout the State except Kasargod Taluk of Malabar District

PARTICULARS	CASTE	
	Kanakkal or Padanna	Panan
	1	2
No land	53.35	49.34
1-5	7.36	7.57
6-10	6.46	12.34
11-25	16.20	14.97
26-50	11.51	8.22
51-100	3.43	4.77
101-200	1.44	2.63
201-500	0.25	0.16
501-1000
1001-1500
1501-2500
Above 2500
Total	100.00	100.00

A. SCHEDULED CASTES

(iii) Throughout the State except Malabar District (Excluding Kasargode Taluk)

PARTICULARS	CASTE	
		PARAVAN
No land		46.06
1-5		11.22
6-10		8.27
11-25		10.43
26-50		11.61
51-100		10.05
101-200		1.97
201-500		0.39
501-1000		..
1001-1500		..
1501-2500		..
Above 2500		..
TOTAL		100.00

A. SCHEDULED CASTES

(vi) Ir Malabar District (Excluding Kasargod Taluk)

Caste PARTICULARS	CASTE	
	GAVARA	MALAYAN
<u>Land Owned</u>		
No land	42.86	62.64
1-5	16.07	0.55
6-10	16.07	5.49
11-25	7.14	8.24
26-50	16.07	10.44
51-100	..	7.14
101-200	1.79	3.85
201-500	..	1.10
501-1000	..	0.55
1001-1500
1501-2500
Above 2500
TOTAL	100.00	100.00

B. SCHEDULED TRIBES

(1) Through out the State

PARTICULARS	CASTE			
	KADAR	IRRULAR	MUTHUVAN	
<u>Land Area</u>				
Up to 1 acre	57.14	..	56.52	
1-5	
6-10	
11-45	
46-50	43.48	
51-100	14.29	
101-200	28.57	5.26	..	
201-500	..	36.84	..	
501-1000	..	36.84	..	
1001-1500	..	10.53	..	
1501-2500	..	10.53	..	
Above	
TOTAL	100.00	100.00	100.00	

Table-5 (Contd..)

B. SCHEDULED TRIBES

(iii.) In Malabar District

Land Owned No Land	CASTE		ADIVAN KURICHICHAN KURUMANS PANIYAN PULAYAN		
	Particulars				
	58.04	19.09	31.97	71.53	64.40
1-5	3.65	0.45	3.24	4.43	5.48
6-10	0.36	0.45	..	5.14	8.17
11-25	7.30	5.00	6.70	6.10	8.86
26-50	10.58	9.55	9.71	4.66	3.55
51-100	7.66	..	17.93	0.96	6.76
101-200	8.76	6.82	12.96	6.10	2.27
201-500	3.65	38.19	13.17	..	0.51
501-1000	..	11.36	4.32	1.08	..
1001-1500	..	3.64
1501-2500	..	5.45
Above 2500
TOTAL	100.00	100.00	100.00	100.00	100.00

B. SCHEDULED TRIBES

(iv) In Malabar District (excluding Kasargod Taluk)

KURUMABAS

CASTE

PARTICULARS

Land Owned

No Land	14.29
1-5	19.64
6-10	3.57
11-25	..
26-50	12.50
51-100	12.50
101-200	..
201-500	37.50
501-1000	..
1001-1500	..
1500-2500	..
Above 2500	..
TOTAL	100.00

B. SCHEDULED TRIBES

Table-5 (Contd..)

(v) In Karcagod Taluk of Malabar District.

CASTE		MARATI	
PARTICULARS			
No Land			98.67
1-5			
6-10			
11-25			
26-50			
51-100			
101-200			
201-500			
501-1000		1.33	
1001-1500			
1501-2500			
Above 2500			
TOTAL			100.00

C. COMMUNITIES OTHER THAN SCHEDULED CASTE & SCHEDULED TRIBES

Table-5 (Contd..)

C-1. HINDUS.

(1) Throughout the State

CASTE	(1) Throughout the State														
	(1)	(2)	(3)	(4)	(5)	(6)	(7)	(8)	(9)	(10)	(11)	(12)	(13)	(14)	(15)
ADU - PARTI THON SULARS	AGASA LAVA SI	AMBA KUDA KAN	AMU- YAN	ARU	ARU	BANDH MIN	BRAH ALAN	CHAKK- MAR	CHAKKA MAR	CHA- LAVAR	CHETT- IES	CHOYI	COORG	DEVADIGA	
1-5	100.00	100.00	28.92	100.00	41.77	100.00	42.11	28.39	25.89	15.33	33.33	42.06	28.56	66.67	100.00
6-10	1.43	8.67	4.84	20.00	..	2.27
11-25	1.91	6.21	6.75	14.66	66.67	6.97	42.86
26-50	5.83	15.79	8.41	12.28	18.67	..	11.01
51-100	9.18	5.26	4.87	16.08	14.00	..	11.57	14.29
101-200	15.83	5.26	9.08	17.01	14.00	..	8.25
201-500	17.26	15.79	8.86	11.17	2.67	..	5.64	14.29
501-1000	12.02	15.79	12.55	5.50	9.08
1001-1500	4.40	7.59	0.45	0.67	..	1.33
1501-2500	0.95	1.78	0.03	0.11	..	16.67	..
Above 2500	0.72	2.19	0.11	..	16.66	..
TOTAL	100.00	100.00	100.00	100.00	100.00	100.00	100.00	100.00	100.00	100.00	100.00	100.00	100.00	100.00	100.00

land owned

Table-5 (Contd..)

C. COMMUNITIES OTHER THAN SCHEDULED CASTES & SCHEDULED TRIBES

G.I. HINDUS.

iii) throughout the State except Malabar District (excluding Kannargodo Taluk)

Land owned	CASTES	
	PARICULARS	KURUMBA
No Land		100.00
1-5		..
6-10		..
11-25		..
26-50		..
51-100		..
101-200		..
201-500		..
501-1000		..
1001-1500		..
1501-2500		..
Above 2500		..
Total		100.00

Table-5 (Contd..)

G. COMMUNITIES OTHER THAN SCHEDULED CASTE & S. TRIBES

C. COMMUNITIES OTHER THAN S.C. & S.T.

C-I HINDUS.

C.I. HINDUS, v) In Malabar District including Kargoddo Taluk

vi) In Kargoddo Taluk

Land owned	PARAVAN		MALAYAN	
	CASTE PARTICULARS	PARAVAN	CASTE PARTICULARS	MALAYAN
No Land	64.46		No Land	66.67
1-5	0.83		2-5	
6-10	2.48		6-10	16.67
11-25	11.57		11-25	..
26-50	3.31		26-50	16.66
51-100	12.40		51-100	..
101-200	2.48		101-200	..
201-500	2.47		201-500	..
501-1000	..		501-1000	..
1001-1500	..		1001-1500	..
1501-2500	..		1501-2500	..
Above 2500	..		Above 2500	..
Total	100.00		Total	100.00

Table-5 (Contd..)

C. COMMUNITIES OTHER THAN SCHEDULED CASTES & SCHEDULED TRIBES
C-IV - OTHERS

C-III. MUSLIMS (1) Throughout the State.

CASTE PARTICULARS	MUSLIMS				
	1	2	3	4	5
<u>Ms Land Owned</u>					
No Land	32.64	71.43	47.22	33.33	7.66.67
1-5	5.33
6-10	6.15	..	5.56
11-25	11.00	28.57	8.33
26-50	12.97	100.00
51-100	13.80	33.33
101-200	9.28	..	22.22	33.33	..
201-500	6.95	..	2.78
501-1000	1.44	..	2.78	33.34	..
1001-1500	0.18
1501-2500	0.16	..	8.33
Above 2500	0.10	..	2.78
<u>Total</u>	100.00	100.00	100.00	100.00	100.00

C. COMMUNITIES OTHER THAN SCHEDULED CASTES & SCHEDULED TRIBES

A. SCHEDULED CASTES

(ii) Throughout the State except Kasargod Taluk of Malabar District.

Table No. 6 (Contd.)

CASTE PARTICULARS (1) PANAN (2)
KANAKKAN OR PADANNA

Land Possessed	(1)	(2)
No land	20.53	19.58
1 - 5	14.00	16.61
6 - 10	9.81	17.93
11 - 25	22.15	23.19
26-50	18.54	11.18
51 - 100	9.05	7.89
101 - 200	4.98	3.29
201 - 500	0.94	0.33
501 - 1000
1001 - 1500
1501 - 2500
Above 2500
TOTAL:-	100.00	100.00

A. SCHEDULED CASTES

Table No.6(Contd.) (iii) Throughout the State except Malabar District
(excluding Kasargod Taluk)

PARTICULARS	CASTE	
	P A R A V A N (1)	
<u>Land possessed</u>		
No land	..	39.37
1 - 5	..	12.20
6 - 10	..	10.04
11 - 25	..	14.37
26 - 50	..	11.81
51 - 100	..	9.25
101 - 200	..	2.17
201 - 500	..	0.79
501 - 1000
1001 - 1500
1500 - 2500
Above 2500
TOTAL:		100.00

A. SCHEDULED CASTES

Table No. 6 (Contd.) Throughout the State except Malabar District

CASTE 1 AYANAVAR 2 BHRATHAR 3 BOYAN 4 KAKKALAN 5 KAVARA 6 KOODAN 7 MANNAN 8 PADANNAN 9 PATHIYAN

PARTICULARS	1	2	3	4	5	6	7	8	9
<u>Land Possessed</u>									
No Land	15.38	31.25	31.12	21.87	10.71	..	38.68	..	19.01
1 - 5	15.38	..	2.22	4.69	19.64	..	9.51	33.34	16.20
6 - 10	25.65	6.25	13.33	17.18	17.86	27.59	11.16	33.33	17.61
11 - 25	20.51	25.00	26.67	28.13	28.56	72.41	15.09	33.33	23.25
26 - 50	12.82	25.00	24.44	20.31	17.86	..	12.18	..	14.79
51 - 100	2.57	12.50	2.22	4.69	7.80	..	7.04
101 - 200	7.69	3.13	1.79	..	1.90	..	1.40
201 - 500	1.79	..	3.62	..	0.70
501 - 1000	1.79	..	0.06
1001 - 1500
1501 - 2500
Above 2500
TOTAL	100.00	100.00	100.00	100.00	100.00	100.00	100.00	100.00	100.00

(Contd...)

A. SCHEDULED CASTES

Table No.6(Contd....) (v) In Malabar District

PARTICULARS	CASTE								
	ADI- DRAVIDA NATAKA. (1)	ADI-KAR- NATAKA. (2)	ARUNTHA- THIYAR (3)	BAJRA (4)	BAKUDA (5)	BANDI (6)	CHERUMAN (7)	HOLEYA (8)	KALLADI (9)
<u>Land Possessed</u>									
No Land	70.00	2.44	100.00	66.67	11.26	..	24.71
1 - 5	30.00	100.00	75.00	..	18.28	95.74	12.55
6 - 10	19.66	..	15.29
11 - 25	..	24.39	25.00	..	23.41	3.55	11.37
26 - 50	..	16.26	18.28	0.71	15.88
51 - 100	..	40.65	33.33	4.84	..	15.88
101 - 200	1.93	..	3.92
201 - 500	..	8.13	2.34	..	0.20
501 - 1000	..	8.13	0.20
1001 - 1500
1501 - 2500
Above 2500
TOTAL :-	100.00	100.00	100.00	100.00	100.00	100.00	100.00	100.00	100.00

(Contd....)

A. SCHEDULED CASTES

(vi) In Malabar District (excluding Kasargod Taluk)

Table No.6.

PARTICULARS	MALAYAN	
	GAVARA (1)	(2)
<u>Land Possessed</u>		
No land	11.86	17.03
1 - 5	42.37	24.73
6 - 10	35.60	6.59
11 - 25	10.17	18.68
26 - 50	..	15.93
51 - 100	..	11.54
101 - 200	..	3.30
201 - 500	..	1.65
501 - 1000	..	0.53
1001 - 1500
1601 - 2500
Above 2500
TOTAL	100.00	100.00

B. SCHEDULED TRIBES

Table No. 6 (Contd.....) (1) Throughout the State

PARTICULARS	CASTE			MUTHUVAN (3)
	KADAR (1)	IRRULAR (2)		
<u>Land Possessed</u>				
No land	28.57	..	56.52	
1 - 5	
6 - 10	
11 - 25	14.29	..	43.48	
26 - 50	
51 - 100	28.57	
101 - 200	28.57	5.26	..	
201 - 500	..	31.58	..	
501 - 1000	..	36.84	..	
1001 - 1500	..	15.79	..	
1501 - 2500	..	10.53	..	
Above 2500	
TOTAL	100.00	100.00	100.00	

B. SCHEDULED TRIBES

Table No.6 (Contd.....(iii) In Malabar District.

CASTE PARTICULARS	PULAYAN				
	1 ADIYAN	2 KURICHICHAN	3 KURUMANS	4 PANIYAN	5
<u>Land Possessed.</u>					
No land	44.90	2.27	7.13	43.54	33.20
1 - 5	3.65	0.45	3.24	11.72	9.46
6 - 10	4.01	0.45	0.43	16.75	14.68
11 - 25	12.05	5.00	8.86	9.93	14.51
26 - 50	10.58	9.55	15.76	3.83	11.98
51 - 100	10.58	..	15.33	5.85	12.23
101- 200	8.76	6.82	15.12	7.30	2.44
201 -500	1.82	42.27	29.81
501 -1000	3.65	20.00	4.22	1.08	..
1001 - 1500	..	8.19
1501 - 2500
TOTAL	100.00	100.00	100.00	100.00	100.00

SCHEDULED TRIBES

(iv) In Malabar District (excluding Kasargod Taluk)

(v) In Kasargod Taluk of Malabar District

PARTICULARS	CASTE	
	KURUMBAS (1)	MARATI (1)
<u>Land Possessed</u>		
No land	14.29	14.67
1 - 5	19.64	84.00
6 - 10	3.57	..
11 - 25
26 - 50	12.50	..
51 - 100	12.50	..
101 - 200
201 - 500	37.50	..
501 - 1000	..	1.33
1001 - 1500
1501 - 2500
Above 2500
TOTAL	100.00	100.00

C. COMMUNITIES OTHER THAN SCHEDULED CASTES & SCHEDULED TRIBES

C. I - HINDUS - (i) Throughout the State

CASTE PARTICULARS	(1)	(2)	(3)	(4)	(5)	(6)	(7)	(8)	(9)	(10)	(11)
	ADUTHON AGASA	AMBALA- VASI	AMMU- KUDAKAN	ARAYAN BALLAL BANDARI	BRAHMIN	CHAKKA- LAN	CHAKKA- MAR.	CHALAMAR			
No land	..	15.23	..	59.50	100.00	21.05	26.98	16.39	..	33.33	
1 - 5	..	100.00	5.95	..	9.54	..	5.26	9.01	5.08	22.00	..
6 - 10	1.67	100.00	5.01	6.45	6.61	13.33	66.67
11 - 25	5.95	..	9.83	..	21.06	10.43	13.54	23.00	..
26 - 50	100.00	..	10.95	..	6.57	1.	5.26	5.47	19.28	17.33	..
51 - 100	17.50	..	4.22	..	15.79	9.08	13.53	14.00	..
101 - 200	17.38	..	1.97	..	5.26	9.46	11.83	4.67	..
201 - 500	15.48	..	2.32	..	26.32	12.19	8.04
501 - 1000	7.50	..	0.78	11	..	7.13	0.24	0.67	..
1001 - 1500	1.32	1.52	0.03
1501 - 2500	0.83	..	0.26	1.25
Above 2500	0.24	1.03
TOTAL	100.00	100.00	100.00	100.00	100.00	100.00	100.00	100.00	100.00	100.00	100.00

(Cont....)

C. COMMUNITIES OTHER THAN SCHEDULED CASTES & SCHEDULED TRIBES

Table No.6(Contd) I - HINDUS - (1) Throughout the State (Continued)

Land Possessed	CASTES											
	(12)	(13)	(14)	(15)	(16)	(17)	(18)	(19)	(20)	(21)	(22)	(23)
No Land	22.91	28.56	66.67	100.00	66.67	17.92	20.92	4.08	20.70	40.51	1.68	100.00
1 - 5	4.81	7.00	6.00	2.81	..	9.57
6 - 10	8.63	42.86	7.82	8.93	10.06	7.02	5.38
11 - 25	13.12	15.16	21.08	20.39	0.35	6.58	0.84	..
26 - 50	14.84	15.94	17.69	15.54	..	4.93
51 - 100	11.23	33.33	15.02	14.77	15.26	3.86	6.13	13.46	..
101 - 200	5.92	14.29	10.95	7.23	9.85	21.05	2.54	26.89	..
201 - 500	12.95	14.29	8.10	2.92	14.06	15.09	10.31	42.86	..
501 - 1000	4.15	1.54	0.46	5.70	14.03	11.66	9.24	..
1001 - 1500	0.72	0.32	..	1.48	7.02	1.64	3.36	..
1501 - 2500	0.61	..	16.67	0.20	..	0.07	3.51	0.75
Above 2500	0.11	..	16.67	0.03	..	0.70	7.37	..	1.68	..
TOTAL	100.00	100.00	100.00	100.00	100.00	100.00	100.00	100.00	100.00	100.00	100.00	100.00

(contd...)

C. COMMUNITIES OTHER THAN SCHEDULED CASTES & SCHEDULED TRIBES
 Table No.6(Contd.) C. I - HINDUS - (i) Throughout the State (Continued)

PARTICULARS	HEGGADE		HINDU		HINDU		JOGI		KALARI		KALLAN		KANNA-		KAVATHI		KAVUDI--		KELASI			
	(24)	(25)	(26)	(27)	(28)	(29)	(30)	(31)	(32)	(33)	(34)	(35)	(36)	(37)	(38)	(39)	(40)	(41)	(42)	(43)		
No land	62.50	100.00	26.89	35.71	12.43	5.56	20.24	20.12	100.00	15.60	
1 - 5	23.87	..	10.06	..	8.23	7.80	..	7.34	
6 - 10	5.38	..	7.69	27.77	10.09	7.61	..	35.78	
11 - 25	10.28	..	12.43	33.33	20.42	17.56	..	33.94	
26 - 50	12.50	..	12.17	64.29	20.12	5.56	20.14	16.53	..	2.75	100.00	
51 - 100	9.81	..	17.16	11.11	13.51	16.84	..	0.92	100.00	
101 - 200	12.50	..	3.49	..	14.79	11.11	5.11	8.73	..	3.67	
201 - 500	12.50	..	6.98	..	4.73	5.56	1.89	3.80	
501 - 1000	0.94	..	0.59	..	0.24	0.82	
1001 - 1500	0.09	
1501 - 2500	0.19	0.03	0.21	
Above 2500	0.01	
TOTAL:-	100.00	100.00	100.00	100.00	100.00	100.00	100.00	100.00	100.00	100.00	100.00	100.00	100.00	100.00	100.00	100.00	100.00	100.00	100.00	100.00	100.00	100.00

(Contd....)

C. COMMUNITIES OTHER THAN SCHEDULED CASTES & SCHEDULED TRIBES

Table No. 6 (Contd.) C. I - HINDUS - (1) Throughout the State (Continued)

CASTE PARTICULARS	(47)	(48)	MARA-VAN (49)	MARU-THUVAR VEERA (50)	MOGA-MOGLI (51)	MOGLI-YAS (52)	MOOLI-YAS (53)	MOOVARI LIAR (54)	MUDA-LIAR (55)	MUKKU-LAN (56)	MUPPER (57)	MUTHU-RAJ (58)	N/IDU (59)
Land possessed													
1 - 5	66.66	100.00	66.20	54.55	89.19	30.00	71.43	12.50	17.39	75.00	45.35
6 - 10	9.03	9.09	11.25	6.52	100.00	12.21
11 - 25	5.61	27.27	2.70	7.50	4.35	4.07
26 - 50	1.56	20.00	1.02	15.00	8.04	9.88
51 - 100	33.34	..	3.43	2.04	27.50	29.35	15.12
101 - 200	2.96	2.04	2.50	3.26	2.91
201 - 500	1.87	..	8.11	..	20.41	13.75	1.09	..	10.67	..	2.91
501 - 1000	3.74	0.09	3.06	7.50	25.00	1.74
1001 - 1500	4.98	1.25	50.00	..	5.23
1501 - 2500	0.62
above 2500	1.25	33.33	..	0.58
TOTAL	100.00	100.00	100.00	100.00	100.00	100.00	100.00	100.00	100.00	100.00	100.00	100.00	100.00

(Contd.....)

C. COMMUNITIES OTHER THAN SCHEDULED CASTES & SCHEDULED TRIBES

Table No. 6 (Contd.) C. I - HINDUS - (1) Throughout the State (Continued)

CASTE PARTICULARS	NAIKKANS		NEDIM- GUDI		PADI- YACHI		PANDI- SUDRA		PANJI		PARADESI		PARI- SAIVAR		PARIVARA BUNT		PARKAVA- OF SOUTH CANARA		
	(60)	(61)	(62)	(63)	(64)	(65)	(66)	(67)	(68)	(69)	(70)	(71)	(72)	(73)	(74)	(75)	(76)	(77)	
Land Possessed																			
No. Land	23.02	8.26	5.56	71.43	50.00	77.78	9.88	25.00											
1 - 5	15.09	2.95	4.63	28.57	5.55	5.55	1.23	25.00											
6 - 10	4.35	4.82	10.19	5.55	5.55	5.55	1.23	25.00											
11 - 25	3.84	11.69	1.39	100.00	5.55	5.55	1.23	25.00											
26 - 50	15.86	15.75	13.89	5.55	5.55	5.55	1.23	25.00											
51 - 100	19.05	18.81	9.26	5.55	5.55	5.55	1.23	25.00											
101 - 200	7.54	17.74	18.06	5.55	5.55	5.55	1.23	25.00											
201 - 500	8.44	14.81	21.29	5.55	5.55	5.55	1.23	25.00											
501 - 1000	2.56	3.77	9.72	5.55	5.55	5.55	1.23	25.00											
1001 - 1500	0.25	0.87	3.24	5.55	5.55	5.55	1.23	25.00											
1501 - 2500	..	0.36	0.92	5.55	5.55	5.55	1.23	25.00											
Above 2500	..	0.17	1.85	5.55	5.55	5.55	1.23	25.00											
TOTAL	100.00	100.00	100.00	100.00	100.00	100.00	100.00	100.00	100.00	100.00	100.00	100.00	100.00	100.00	100.00	100.00	100.00	100.00	100.00

(Contd.)

C. COMMUNITIES OTHER THAN SCHEDULED CASTES & SCHEDULED TRIBES

Table No.6(Contd.) C. I - HINDUS - (i) Throughout the State (Continued)

CASTE PARTICULARS	SIVA- SENAI- THOL- THOTTI- VELLALA THALAVAR KOLLAN YAN. (70) (71) (72) (73) (74) (75) (76) (77) (78) (79) (80)										
	PERU- MANNAN	PALLOON VAN	PALLU- PURUZVA REDDIAR	SALIYAS	SEVAI- THALAVAR	SHETTY	(78)	(79)	(80)		
<u>Land Possessed</u>											
No Land	13.78	66.67	20.00	54.64	13.48	22.01	33.33	12.30	..	100.00	
1 - 5	13.41	..	16.67	80.00	24.32	3.40	6.39	8.21	75.00	..	
6 - 10	8.19	..	30.83	..	3.51	3.93	14.01	
11 - 25	13.04	..	15.00	..	10.86	14.40	..	0.63	25.00	..	
26 - 50	17.13	33.33	13.33	5.26	12.96	15.49	..	6.94	
51 - 100	18.80	..	3.33	1.75	18.99	13.23	..	3.47	
101 - 200	6.89	..	0.84	3.51	12.96	9.43	33.33	13.56	
201 - 500	8.57	1.75	16.49	3.68	33.34	43.53	
501 - 1000	0.19	3.51	6.02	0.52	..	5.05	
1001 - 1500	1.75	0.52	0.13	..	6.31	
1501 - 2500	0.39	
Above 2500	0.71	
TOTAL:-	100.00	100.00	100.00	100.00	100.00	100.00	100.00	100.00	100.00	100.00	100.00

(Contd...)

C. COMMUNITIES OTHER THAN SCHEDULED CASTES & SCHEDULED TRIBES

C. I - HINDUS - (I) Throughout the State (Continued)

Table No.6(Contd.)	C. I - HINDUS - (I) Throughout the State (Continued)															
CASTE	URAL	MAZHU-	VAISYA	(82)	(83)	(84)	(85)	(86)	(87)	(88)	VELLA-	VELUTHE-	VILLKI	YADA-	YCGI-	
PARTICULARS	GOMNDER	VANJA-	LI/A	VAKA-	VALLA-	VEERA-	VELAN	CHETTI-	AR.	LA,	DATHU	NAIR.	THALA	KODIVE-	VAS.	YKAL
	(81)	(82)	(83)	(84)	(85)	(86)	(87)	(88)	(89)	(90)	(91)	(92)	(93)	(94)	(95)	(96)
No Land	..	10.06	26.08	..	8.33	15.25	9.43	15.74	15.76	18.62	10.73
1 - 5	..	15.09	8.70	100.00	..	8.28	33.97	7.87	6.79	8.80	100.00	4.38	16.67	..
6 - 10	..	38.99	4.35	..	16.67	15.49	15.09	5.01	8.36	11.24	2.99
11 - 25	..	20.13	21.74	26.41	11.32	15.56	17.58	20.50	6.20
26 - 50	100.00	0.63	33.33	14.53	16.98	10.55	13.30	16.73	14.60
51 - 100	..	2.52	26.08	11.28	1.89	20.04	15.88	13.51	20.36	13.33	..
101 - 200	..	0.63	8.70	..	16.67	5.40	..	18.25	11.52	5.97	17.74	26.67	..
201 - 500	..	8.18	8.33	2.16	..	6.98	5.09	2.67	18.48	20.00	..
501 - 1000	..	1.89	16.67	0.84	0.48	1.02	2.26	23.33	..
1001 - 1500	..	1.25	4.35	0.36	0.86	0.73
1501 - 2500	..	0.63	0.12	0.08	0.80
Above 2500	11.32	..	0.12	0.73
TOTAL:	100.00	100.00	100.00	100.00	100.00	100.00	100.00	100.00	100.00	100.00	100.00	100.00	100.00	100.00	100.00	100.00

C. COMMUNITIES OTHER THAN SCHEDULED CASTES & SCHEDULED TRIBES

C. I - HINDUS - (111) Throughout the State except Malabar District
(excluding Kasargod Taluk)

Table No. 6 (Contd.)

CASTE
KURUMBA
(1)

PARTICULARS

Land Possessed

No land	9.09
1 - 5	..
6 - 10	90.91
11 - 25	..
26 - 50	..
51 - 100	..
101 - 200	..
201 - 500	..
501 - 1000	..
1001 - 1500	..
1501 - 2500	..
Above 2500	..
TOTAL :	100.00

C. COMMUNITIES OTHER THAN SCHEDULED CASTES & SCHEDULED TRIBES

C. I - H I N D U S

Table No.6(Contd.....)

(v) In Malabar District excluding Kasargod Taluk

(vi) In Kasargod Taluk

CASTE	PARAVAN (1)		MALAYAN (1)	
	Land Possessed		Land Possessed	
N land	..	5.79	..	50.00
1 - 5	..	4.96	..	16.67
6 - 10	..	6.61	..	16.67
11 - 25	..	26.45
26 - 50	..	17.36	..	16.66
51 - 100	..	20.66
101 - 200	..	15.70
201 - 500	..	2.47
501 - 1000
1001 - 1500
1501 - 2500
Above 2500
TOTAL	..	100.00	TOTAL	100.00

C. COMMUNITIES OTHER THAN SCHEDULED CASTES & SCHEDULED TRIBES

Table No. 6 (Contd.) C. II - CHRISTIANS - (i) Throughout the State

CASTE	(1)	(2)	(3)	(4)	(5)	(6)	(7)	(8)	(9)	(10)	(11)	(12)	(13)
PARTICULARS	ANGLO-INDIANS	CHRISTIANS	C.S.I. CHURCH	EVANGELICAL	INDEPENDENT	JACOBITES	LATIN CHRISTIANS	MAR-THOMITE	O.D.C.	S.C. converted to Christianity	S.T. converted to Christianity	BIU. LECS.	SYRIAN CATHOLICS
No Land	50.54	44.29	17.09	2.27	20.00	7.32	50.34	6.08	17.66	31.48	68.42	5.26	14.18
1 - 5	27.17	18.57	5.44	1.36	..	2.99	7.54	2.94	3.17	13.33	19.74	3.10	3.23
6 - 10	5.43	1.43	6.94	1.36	..	3.87	6.43	3.90	5.99	13.73	..	2.17	4.94
11 - 25	4.53	11.43	12.37	11.82	..	9.84	11.12	9.87	7.57	16.74	..	6.81	9.18
26 - 50	4.71	5.71	14.02	26.37	33.33	12.90	9.05	13.22	16.08	11.53	1.31	19.50	8.79
51 - 100	0.91	..	18.07	18.64	16.67	16.18	6.70	23.78	16.90	8.55	2.63	16.72	11.77
101 - 200	3.08	1.43	13.04	18.18	3.33	20.93	4.21	21.37	17.25	2.93	3.95	18.58	15.61
201 - 500	2.54	17.14	9.39	15.91	20.00	19.75	3.05	14.07	13.26	1.12	3.95	16.40	22.35
501 - 1000	1.09	..	2.64	4.09	6.67	4.71	0.95	4.08	1.47	0.31	..	5.88	7.16
1001 - 1500	0.24	0.91	0.35	0.50	0.59	0.03	..	2.79	1.43
1501 - 2500	0.71	0.40	0.25	0.02	0.06	0.97
Above 2500	0.05	0.20	0.01	0.17	2.79	0.39
TOTAL	100.00	100.00	100.00	100.00	100.00	100.00	100.00	100.00	100.00	100.00	100.00	100.00	100.00

115: C. COMMUNITIES OTHER THAN SCHEDULED CASTES & SCHEDULED TRIBES

IV - OTHERS

C. III - MUSLIMS

(1) Throughout the State

Table No. 6 (Contd....)

CASTE PARTICULARS	MUSLIMS (1)					OTHERS				
	(1)	(2)	(3)	(4)	(5)	(1)	(2)	(3)	(4)	(5)
<u>Land Possessed</u>										
No land	15.05					71.43	30.56	33.33		66.67
1 - 5	9.06									
6 - 10	7.20						5.56			
11 - 25	12.76					28.57	8.33			
26 - 50	15.28								100.00	
51 - 100	16.03									33.33
101 - 200	11.62							33.33		
201 - 500	10.37									
501 - 1000	2.10						22.22	33.34		
1001 - 1500	0.30									
1501 - 2500	0.13						27.77			
Above 2500	0.10						5.56			
TOTAL:-	100.00					100.00	100.00	100.00	100.00	100.00

Summary Table (6)

PERCENTAGE DISTRIBUTION OF HOUSEHOLDS ACCORDING TO LAND POSSESSED

Land Possessed (cents)	Caste/Community Group	Communities, Communities other in specified than Scheduled areas . . . Castes & Schedu- led Tribes			State
		Scheduled Tribes	Scheduled Castes	Scheduled Tribes Communities, Communities other in specified than Scheduled areas . . . Castes & Schedu- led Tribes	
No Land		28.57	31.53	40.73	17.62
1 - 5		8.64	11.64	8.96	6.54
6 - 10		9.67	15.00	13.38	6.85
11 - 25		10.10	18.09	12.50	12.89
26 - 50		8.87	12.61	10.95	14.23
51 - 100		10.44	6.48	5.02	14.80
101 - 200		7.37	2.89	5.08	12.32
201 - 500		10.76	1.34	2.64	10.97
501 - 1000		4.06	0.31	0.16	2.76
1001 - 1500		0.92	0.11	0.03	0.56
1501 - 2500		0.60	..	0.53	0.31
Above 2500		0.15
ALL GROUPS		100.00	100.00	100.00	100.00

A. SCHEDULED CASTES
Percentage Distribution of Households in each Caste/Community
1) Throughout the State.

Table No.7

According to Annual Income.

Annual Income	According to Annual Income					
	1	2	3	4	5	6
PARTICULARS	Chakkiliyan	Kuravan	Nayadi	Pallan	Sambavar	Valluvan
Below 300	0.22	0.59	3.13	..	0.64	3.58
301-600	20.00	3.96	21.88	7.37	4.90	12.94
601-1000	30.45	24.61	46.87	40.00	21.31	43.14
1001-1500	24.67	38.21	15.62	9.47	31.26	14.51
1501-2000	17.11	19.50	12.50	30.53	22.65	19.61
2001-3000	4.22	10.91	..	12.63	14.97	5.49
3001-4000	3.33	1.89	2.26	0.73
4001-5000	..	0.29	1.35	..
5001-6000	..	0.02	0.57	..
6001-7000	..	0.02
7001-8000
8001-9000	0.03	..
9001-10000	0.03	..
10001-11000
11001-12000
12001-13000	0.03	..
13001-14000
14001-15000
above 15000
TOTAL	100.00	100.00	100.00	100.00	100.00	100.00

A. SCHEDULED CASTES

(ii) Throughout the State except Kasargod Taluk.

Table No.7 contd...

A. SCHEDULED CASTE

(iii) Throughout the State except Malabar District (excluding Kasargod Taluk).

PARTICULARS	CASTE		Annual Income
	Kanakkan or Padanna	Panan	
0	1	2	0
Below 300	0.65	0.82	300
301-600	1.95	9.05	301-600
601-1000	19.30	23.85	601-1000
1001-1500	36.72	28.78	1001-1500
1501-2000	22.87	19.90	1501-2000
2001-3000	14.86	12.34	2001-3000
3001-4000	2.67	2.14	3001-4000
4001-5000	0.94	0.82	4001-5000
5001-6000	0.04	0.66	5001-6000
6001-7000	6001-7000
7001-8000	..	0.16	7001-8000
8001-9000	8001-9000
9001-10000	9001-10000
10001-11000	10001-11000
11001-12000	..	0.66	11001-12000
12001-13000	12001-13000
13001-14000	..	0.66	13001-14000
14001-15000	14001-15000
Above 15000	..	0.16	Above 15000
TOTAL	100.00	100.00	TOTAL
			100.00

Paravan

1

3.35
7.87
26.57
26.77
12.40
18.72
2.76
0.98
0.20
0.20
..
..
0.20
..
..
..
..
..
..
..
..

A. SCHEDULED CASTES.

119

(iv) Throughout the State except Malabar District.

Table 7 contd...

PARTICULARS	CASTE							
	1	2	3	4	5	6	7	8
	Ayanavar	Bharata	Boyan	Kakkalan	Kavara	Koodan	Mannan	Padannan
Below 300	1.56	0.82	..
301 -600	2.56	7.81	5.08	..	3.61	33.34
601 -1000	17.95	31.25	..	23.41	1.69	13.79	16.87	..
1001 -1500	35.90	25.00	53.33	25.00	45.75	20.69	26.19	..
1501 -2000	28.21	18.75	17.78	14.06	44.10	37.93	21.50	..
2001 -3000	12.82	18.75	28.89	18.75	3.38	27.59	18.26	33.33
3001 -4000	..	6.25	..	1.56	7.61	..
4001 -5000	2.56	1.56	2.60	33.33
5001 -6000	6.25	1.40	..
6001 -7000	0.13	..
7001 -8000	0.69	..
8001 -9000
9001 -10000
10001 -11000	0.19	..
11001 -12000
12001 -13000
13001 -14000
14001 -15000	0.13	..
Above 15000
TOTAL	100.00	100.00	100.00	100.00	100.00	100.00	100.00	100.00

Contd..

A. SCHEDULED CASTES.

(v) In Malabar District

Table 7 contd....

121

PARTICULARS	Adi Dravida		Aruntha		Bakuda	Bandi	Cheruman	Holey	Kalladi
	2	3	4	5					
Annual Income									
Below 300	50.00	0.64	34.75	8.43
301-600	100.00	25.00	4.07	45.55	35.30
601-1000	31.14	18.44	27.84
1001-1500	70.00	16.26	..	25.00	33.34	..	37.68	4.26	17.06
1501-2000	..	8.13	16.26	..	10.78
2001-3000	30.00	25.20	33.33	..	6.35
3001-4000	..	42.28	33.33	..	2.12
4001-5000	..	8.13	100.00	1.29	..	0.59
5001-6000
6001-7000	0.32
7001-8000
8001-9000
9001-10000	0.13
10001-11000
11001-12000
12001-13000
13001-14000
14001-15000
Above 15000
TOTAL	100.00	100.00	100.00	100.00	100.00	100.00	100.00	100.00	100.00

Contd..

(i) Malabar District (excluding Kasargod Taluk)

CASTE PARTICULARS

Gavara Malayan

1

2

Annual Income

300	5.36	0.55
300-600	26.79	6.59
601-1000	30.36	18.13
1001-1500	19.63	23.63
1501-2000	8.93	13.74
2001-3000	9.93	28.57
3001-4000	..	7.14
4001-5000	..	1.10
5001-6000
6001-7000
7001-8000
8001-9000	..	0.55
9001-10000
10001-11000
11001-12000
12001-13000
13001-14000
14001-15000
above 15000

TOTAL

100.00

100.00

B. SCHEDULED TRIBES

124

Table 7 contd..

(i) Throughout the State

Annual Income	CASTE PARTICULARS		
	Kadar	Irrular	Muthuvan
	1	2	3
Below 300
301- 600	..	5.26	21.74
601-1000	..	5.26	..
1001-1500	42.86	31.58	34.78
1501-2000	57.14	36.84	43.48
2001-3000	..	21.06	..
3001-4000
4001-5000
5001-6000
6001-7000
7001-8000
8001-9000
9001-10000
10001-11000
12001-12000
13001-13000
14001-14000
14001-15000
Above 15000	100.00	100.00	100.00
TOTAL	100.00	100.00	100.00

(ii) Throughout the State except Malabar District. Table 7 contd...

Annual Income	CASTE									
	1	2	3	4	5	6	7	8	9	10
Below 300	10.39	9.71
301-600	22.08	28.64	3.76
601-1000	51.33	57.14	39.32	27.07
1001-1500	13.31	50.00	7.79	9.22	66.67	..	31.20
1501-2000	22.82	50.00	..	66.67	13.11	33.33	..	19.17
2001-3000	7.22	..	100.00	33.33	100.00	15.04
3001-4000	3.80	2.60	3.76
4001-5000
5001-6000	1.14
6001-7000
7001-8000
8001-9000
9001-10000	0.38
10001-11000
11001-12000
12001-13000
13001-14000
14001-15000
Above 15000
TOTAL	100.00	100.00	100.00	100.00	100.00	100.00	100.00	100.00	100.00	100.00

PARTICULARS: 1. Kanikkaran Kochivelan 2. Malabar 3. Arayan 4. Malabar Pandaram Vedan 5. Malabar Malai 6. Malayan Malayar 7. Malaya-rayar 8. Palleyan Palliyar (Hill Dwellers) 9. Ulladan 10. Ulladan

B. SCHEDULED TRIBES.

(iii) In Malabar District.

Table 7 contd...

PARTICULARS	CASTE				
	Adiyan	Kurichichan	Kurumans	Paniyan	Pulayan
	1	2	3	4	5
<u>Annual Income</u>					
Below 300	2.55	13.64	0.43	2.75	0.90
301-600	9.12	10.91	22.68	14.59	5.56
601-1000	32.49	10.91	28.29	53.82	27.90
1001-1500	20.80	13.18	16.85	17.71	31.84
1501-2000	28.84	29.55	31.75	9.57	15.36
2001-3000	2.55	16.36	..	0.48	14.63
3001-4000	3.65	5.00	..	1.08	1.88
4001-5000	1.41
5001-6000	0.52
6001-7000
7001-8000
8001-9000	..	0.45
9001-10000
10001-11000
11001-12000
12001-13000
13001-14000
14001-15000
Above 15000
TOTAL	100.00	100.00	100.00	100.00	100.00

B. SCHEDULED TRIBES

B. SCHEDULED TRIBES

(iv) In Malabar District(excluding Kasargod Taluk)

(v) In Kasargod Taluk of Malabar District

KURUMBAS		MARATI	
CASTE	PARTICULARS	CASTE	PARTICULARS
Annual Income		Annual Income	
Below	300	Below	300
301 -	600	301 -	600
601 -	1000	601 -	1000
1001 -	1500	1001 -	1500
1501 -	2000	1501 -	2000
2001 -	3000	2001 -	3000
3001 -	4000	3001 -	4000
4001 -	5000	4001 -	5000
5001 -	6000	5001 -	6000
6001 -	7000	6001 -	7000
7001 -	8000	7001 -	8000
8001 -	9000	8001 -	9000
9001 -	10000	9001 -	10000
10001 -	11000	10001 -	11000
11001 -	12000	11001 -	12000
12001 -	13000	12001 -	13000
13001 -	14000	13001 -	14000
14001 -	15000	14001 -	15000
Above	15000	Above	15000
TOTAL :-	100.00	TOTAL :-	100.00

MARATI

PARTICULARS

CASTE

PARTICULARS

KURUMBAS

CASTE

Annual Income

Annual Income

Below 300

Below 300

301 - 600

301 - 600

601 - 1000

601 - 1000

1001 - 1500

1001 - 1500

1501 - 2000

1501 - 2000

2001 - 3000

2001 - 3000

3001 - 4000

3001 - 4000

4001 - 5000

4001 - 5000

5001 - 6000

5001 - 6000

6001 - 7000

6001 - 7000

7001 - 8000

7001 - 8000

8001 - 9000

8001 - 9000

9001 - 10000

9001 - 10000

10001 - 11000

10001 - 11000

11001 - 12000

11001 - 12000

12001 - 13000

12001 - 13000

13001 - 14000

13001 - 14000

14001 - 15000

14001 - 15000

Above 15000

Above 15000

TOTAL :-

TOTAL :-

100.00

100.00

..

25.33

42.67

16.00

14.67

..

..

..

1.33

..

..

..

..

..

..

..

..

..

..

..

..

C. COMMUNITIES OTHER THAN SCHEDULED CASTE & SCHEDULED TRIBES

Table 7 contd.....

C-1- HINDUS

(1) Throughout the State (Contd..)

Annual Income	Kerala									
	31	32	33	34	35	36	37	38	39	40
Below 300	0.32	16.95	17.43	0.64	0.53
301-600	5.95	..	57.80	10.53	9.10	..	16.45	8.95
601-1000	22.59	..	11.93	..	100.00	15.79	18.18	100.00	24.68	23.15
1001-1500	23.82	44.07	4.59	26.32	27.27	..	13.92	9.47
1501-2000	17.56	28.81	2.75	26.32	36.36	..	32.91	11.58
2001-3000	15.50	10.17	5.50	100.00	..	10.52	10.13	12.63
3001-4000	6.06	4.74
4001-5000	2.67	5.26	8.95
5001-6000	2.77	5.26	9.09	2.63
6001-7000	0.82	0.63	5.79
7001-8000	0.31	0.53
8001-9000	0.73	3.68
9001-10000	0.64	3.16
10001-11000	0.10
11001-12000
12001-13000	1.58
13001-14000	0.53
14001-15000
Above 15000	2.10
TOTAL	100.00	100.00	100.00	100.00	100.00	100.00	100.00	100.00	100.00	100.00

CASTE

PARTICULARS

Kani'su

Kannadians

Kavathi

Kavudiyaru

Kelasi

Mudali

Komaran

Velamar

Koteyar

Kshetriya

C. COMMUNITIES OTHER THAN SCHEDULED CASTES & SCHEDULED TRIBES

C. I - HINDUS - (ii) Throughout the State except Malabar District

CASTE PARTICULARS	ADI ARUNTHA-CHAMAR CHERUMAN KUDUMBAN SEMMAN		THOTTI KATTUNAYAKAN		PANIYAN				
	(1)	(2)	(3)	(4)	(5)	(6)	(7)	(8)	(9)
Annual Income:									
Below 300	100.00	0.19
301 - 600	13.69
601 - 1000	46.20	4.28	37.50	..	100.00	..
1001 - 1500	22.24	46.04	13.50	33.34
1501 - 2000	8.94	27.80	25.00	33.33
2001 - 3000	..	100.00	100.00	7.60	20.00	25.00	33.33
3001 - 4000	1.14	1.88	100.00
4001 - 5000
5001 - 6000
6001 - 7000
7001 - 8000
8001 - 9000
9001 - 10000
10001 - 11000
11001 - 12000
12001 - 13000
13001 - 14000
14001 - 15000
Above 15000
TOTAL :	100.00	100.00	100.00	100.00	100.00	100.00	100.00	100.00	100.00

B.M.L.C.

C. 7

C. COMMUNITIES OTHER THAN SCHEDULED CASTES & SCHEDULED TRIBES

C. I - HINDUS - (iii) Throughout the State except Malabar District excluding Kasargod Taluk

K U R U M B A

CASTE
PARTICULARSAnnual Income

Below 300
301 - 600
601 - 1000
1001 - 1500	..	6.82	..
1501 - 2000	..	25.00	..
2001 - 3000	..	45.45	..
3001 - 4000	..	22.73	..
4001 - 5000
5001 - 6000
6001 - 7000
7001 - 8000
8001 - 9000
9001 - 10000
10001 - 11000
11001 - 12000
12001 - 13000
13001 - 14000
14000 - 15000
Above 15000	100.00

TOTAL:-

100.00

C. COMMUNITIES OTHER THAN SCHEDULED CASTES AND SCHEDULED TRIBES

C. I - HINDUS - (v) In Malabar District excluding Kasargod Taluk.

CASTE PARTICULARS PARAVAN

Annual Income		
Below 300	2.48	..
301 - 600	1.65	..
601 - 1000	8.26	..
1001 - 1500	61.97	..
1501 - 2000	14.05	..
2001 - 3000	5.79	..
3001 - 4000	3.31	..
4001 - 5000	0.83	..
5001 - 6000	0.83	..
6001 - 7000
7001 - 8000
8001 - 9000
9001 - 10000	0.83	..
10001 - 11000
11001 - 12000
12001 - 13000
13001 - 14000
14001 - 15000
Above 15000
TOTAL	100.00	..

C. COMMUNITIES OTHER THAN SCHEDULED CASTES & SCHEDULED TRIBES

C. I - HINDUS - (vi) In Kasargod Taluk of Malabar District

CASTE PARTICULARS MALAYAN

Annual Income		
Below 300
301 - 600	16.67	..
601 - 1000	50.00	..
1001 - 1500	16.67	..
1501 - 2000	16.66	..
2001 - 3000
3001 - 4000
4001 - 5000
5001 - 6000
6001 - 7000
7001 - 8000
8001 - 9000
9001 - 10000
10001 - 11000
11001 - 12000
12001 - 13000
13001 - 14000
14001 - 15000
Above 15000
TOTAL	100.00	..

C. COMMUNITIES OTHER THAN SCHEDULED CASTES & SCHEDULED TRIBES

C. II - CHRISTIANS - (1) Throughout the State

CASTE PARTICULARS	(1)	(2)	(3)	(4)	(5)	(6)	(7)	(8)	(9)	(10)	(11)	(12)	(13)
	ANGLO-INDIANS	SYRIAN CHRISTIANS	C.S.I. CHURCH	EVANGELICAL CHURCH	INDEPENDANT SYRIANS	JACOBITES	LATIN-CHRISTIAN	MARTHOMITES	O.D.C.	S.C. converted to CHRISTIANITY	S.C. converted to CHRISTIANITY	SIUC	SYRIAN CATHOLICS
Below 300	2.36	..	0.95	0.33	0.99	0.63	0.06	0.55	..	0.31	0.18
301 - 600	4.53	..	5.30	2.31	5.60	2.88	4.00	5.93	..	0.31	1.96
601 - 1000	14.31	2.86	19.57	7.28	..	10.68	19.30	9.21	5.55	28.54	25.00	12.38	11.53
1001 - 1500	14.86	7.14	29.35	24.09	33.33	22.72	26.71	20.01	24.93	34.87	34.21	32.70	23.76
1501 - 2000	18.30	17.14	13.97	14.09	6.67	18.43	17.38	17.68	17.31	14.46	3.95	9.91	18.05
2001 - 3000	20.47	8.57	13.09	22.73	33.33	20.70	15.95	23.19	19.66	11.95	35.53	27.54	21.57
3001 - 4000	10.69	27.14	5.79	10.91	13.84	8.92	5.99	10.09	2.04	2.01	1.31	10.22	10.01
4001 - 5000	4.71	20.00	4.58	8.64	3.33	5.50	3.08	6.06	3.11	1.12	..	0.62	4.75
5001 - 6000	5.25	1.43	2.19	5.45	3.33	3.25	2.14	3.20	3.70	0.40	..	1.74	2.33
6001 - 7000	2.54	15.72	1.55	0.91	..	2.55	0.73	3.01	1.00	0.93	1.83
7001 - 8000	0.54	..	0.57	0.91	..	1.07	0.55	1.67	0.70	0.02	..	0.62	0.88
8001 - 9000	0.45	4.09	6.67	0.86	0.44	0.57	0.70	0.15	..	0.62	0.78
9001 - 10000	0.36	..	0.38	0.85	0.33	0.42	0.12	0.31	0.54
10001 - 11000	0.40	0.50	0.15	0.55	0.18	0.22
11001 - 12000	0.72	..	0.74	0.45	..	0.30	0.07	0.06	0.47	0.25
12001 - 13000	0.18	..	0.26	0.30	0.07	0.11	0.33
13001 - 14000	0.43	0.45	..	0.20	0.01	0.08	0.06	0.17
14001 - 15000	0.12	0.08	0.07	0.33	0.41	1.55	0.05
Above 15000	0.18	..	0.31	0.45	0.44	0.25	1.24	0.81
TOTAL :-	100.00	100.00	100.00	100.00	100.00	100.00	100.00	100.00	100.00	100.00	100.00	100.00	100.00

C. COMMUNITIES OTHER THAN SCHEDULED CASTES & SCHEDULED TRIBES

Table 7 contd...

C. III - MUSLIMS (i) Throughout the State

CASTE PARTICULARS MUSLIMS (1)

Annual Income

Below 300	0.36
301 - 600	4.69
601 - 1000	18.59
1001 - 1500	27.84
1501 - 2000	18.16
2001 - 3000	17.48
3001 - 4000	6.57
4001 - 5000	2.60
5001 - 6000	1.61
6001 - 7000	0.78
7001 - 8000	0.51
8001 - 9000	0.27
9001 - 10000	0.15
10001 - 11000	0.12
11001 - 12000	0.12
12001 - 13000	0.01
13001 - 14000	0.03
14001 - 15000	0.03
Above 15000	0.08
TOTAL :-	100.00

C. IV - OTHERS

CASTE PARTICULARS

Annual Income

Below 300
301 - 600
601 - 1000	14.29	16.67	33.33
1001 - 1500	78.57	33.33	..
1501 - 2000
2001 - 3000	..	25.00
3001 - 4000	57.14	2.78	..	100.00	..
4001 - 5000	..	19.44	33.33
5001 - 6000	..	13.88
6001 - 7000	33.33	..
7001 - 8000
8001 - 9000	33.34
9001 - 10000	..	2.78
10001 - 11000
11001 - 12000	..	2.78
12001 - 13000
13001 - 14000
14001 - 15000	33.34	..
Above 15000	..	16.67
TOTAL :-	100.00	100.00	100.00	100.00	100.00

Summary Table (7) - PERCENTAGE DISTRIBUTION OF HOUSEHOLDS ACCORDING TO ANNUAL INCOME

Caste/Community Group	Annual Income (Rs)			
	Scheduled Castes	Scheduled Tribes	Communities in specified areas other than Scheduled Castes & Scheduled Tribes	State
Below 300	0.69	0.39	0.43	0.53
301 - 600	5.53	4.75	4.43	4.77
601 - 1000	24.61	22.35	17.01	16.42
1001 - 1500	33.22	33.41	37.13	25.40
1501 - 2000	18.52	18.33	21.02	17.94
2001 - 3000	13.04	16.20	13.76	18.31
3001 - 4000	2.72	2.86	4.88	7.42
4001 - 5000	1.11	1.37	0.83	3.51
5001 - 6000	0.30	0.30	0.19	2.04
6001 - 7000	0.13	..	0.13	1.26
7001 - 8000	0.06	0.61
8001 - 9000	0.03	..	0.05	0.52
9001 - 10000	..	0.04	0.11	0.34
10001 - 11000	0.24
11001 - 12000	0.03	..	0.03	0.16
12001 - 13000	0.11
13001 - 14000	0.1	0.07
14001 - 15000	0.06
Above 15000	0.29
ALL GROUPS	100.00	100.00	100.00	100.00
				100.00

Table No. 8 (Cpmtd.....)

A. SCHEDULED CASTE

(11) Throughout the State except Malabar District (excluding Kasargod Taluk)

(11) Throughout the State except Kasargod Taluk.

PARTICULARS	CASTE			Paravan
	Kanakkan or Padanna	Panan		
	1	2	1	
<u>Per capita Monthly Income:</u>				
Below 5	..	0.33	0.20	
6 - 10	33.95	4.28	16.93	
11 - 25	47.08	59.21	52.76	
26 - 50	17.02	31.41	28.15	
51 - 100	1.95	3.62	1.59	
101 - 200	..	0.49	0.39	
201 - 300	..	0.66	..	
301 - 500	
501 - 1000	
1001 - 1500	
1501 - 2500	
Above 2500	
TOTAL:	100.00	100.00	100.00	

A. SCHEDULED CASTE

Table No.8(Contd...)(vi) In Malabar District (excluding Kasargod Taluk)

PARTICULARS	CASTE	
	Gavara	Malayan
	1	2
Below 5	..	2.20
6 - 10	5.35	13.19
11 - 25	62.50	33.52
26 - 50	28.57	41.76
51 - 100	1.79	8.78
101 - 200	1.79	0.55
201 - 300
301 - 500
501 - 1000
1001 - 1500
1501 - 2500
Above 2500
TOTAL:	100.00	100.00

B. SCHEDULED TRIBES.

(1) Throughout the State.

CASTE	Particulars		
	KADAR 1	IRRULAR 2	MUTHUVAN 3
Below 5
6 - 10	7.14
11 - 25	5.0	47.37	43.48
26 - 50	28.57	52.63	56.52
51 - 100	14.29
101 - 200
201 - 300
301 - 500
501 - 1000
1001 - 1500
1501 - 2500
Above 2500
TOTAL	100.00	100.00	100.00

Table No. 8 (Contd...)

B. SCHEDULED TRIBES.

iii) In Malabar District.

CASTE PARTICULARS	PULAYAN				
	1	2	3	4	5
Below 5					0.04
6 - 10		13.63		3.23	11.72
11 - 25	58.76	20.00	31.10	64.11	62.26
26 - 50	40.51	66.17	66.74	30.74	22.21
51 - 100	0.73		2.16	1.92	3.17
101 - 200					0.60
201 - 300					
301 - 500					
501 - 1000					
1001 - 1500					
1501 - 2500					
Above 2500			100.00	100.00	100.00
TOTAL	100.00	100.00	100.00	100.00	100.00

Table No. 8 (Contd...)

B. SCHEDULED TRIBES.
B. SCHEDULED TRIBES.
 v. In Malabar Dist. (Excluding Kasargod Taluk. v. In Kasargod Taluk of Malabar District.

CASTE
 KURUMBAS
 MARATI
 CASTE

Particulars	KURUMBAS	MARATI
Below 5	1.79	33.33
6 - 10	41.07	65.34
11 - 25	57.14	1.33
26 - 50
51 - 100
101 - 200
201 - 300
301 - 500
501 - 1000
1001 - 1500
1501 - 2500
Above 2500
TOTAL	100.00	100.00

Table No. 8 (Contd.....)

C-1 HINDUS - contd.....

Casto Particulars	41	42	43	44	45	46	47	48	49	50
	Krishna- Vita	Kudum- bis	Kusavan	Madivala	Malai- Panickor	Maha- Rashtra	Mollar	Maniyan	Maravan	Maruthu- var
Below 5	1.99
6-10	..	7.85	30.55	14.29
11-25	35.33	56.59	44.50	57.14	100.00	14.29	66.66	69.23	35.05	54.55
26-50	..	30.99	22.01	14.28	..	28.57	33.34	30.77	54.36	27.27
51-100	33.34	4.47	0.76	14.29	..	42.85	10.59	18.18
101-200	33.33	0.10	0.19	14.29
201-300
301-500
501-1000
1001-1500
1501-2500
Above 2500
TOTAL	100.00	100.00	100.00	100.00	100.00	100.00	100.00	100.00	100.00	100.00

C-1 HINDUS - contd....

Table No. 8 (Contd.....)

Caste Particulars	Pulluvan		Puruzhva		Reddiar		Siva- Vollala		Saliyas		Sonai Thalavar		Shetty		Tholko- Ilan		Thottiyan	
	71	72	73	74	75	76	77	78	79	80								
Below 5	0.84
6-10	..	4.17	40.00	1.75	4.19	11.10	7.57
11-25	66.67	54.16	60.00	7.02	44.24	61.59	23.02	100.00
26-50	33.33	30.00	..	24.57	34.95	20.79	66.67	59.94	100.00
51-100	..	11.67	..	38.60	9.29	4.52	33.33	9.15
101-200	22.81	4.45	1.16	0.32
201-300	1.75	0.79
301-500	1.75	2.09
501-1000	1.75
1001-1500
1501-2500
Above 2500
TOTAL	100.00	100.00	100.00	100.00	100.00	100.00	100.00	100.00	100.00	100.00	100.00	100.00	100.00	100.00	100.00	100.00	100.00	100.00

Table No: 8(Contd.....)

C-1 HINDUS - contd...

Casto Particulars.	C-1 HINDUS - contd...											
	82	83	84	85	86	87	88	89	90	91	92	93
Urall, Nazhu- Gounder vans sya	82	83	84	85	86	87	88	89	90	91	92	93
Valla- yanja- zhy
Veera- sai van ar
Vella- la
Velu- theda- Nair
Vira- kodi- thala Vella- lar
Yada- vas Kuru- kkal
Below 5	0.24	0.07
6-10	3.14	8.16	4.85	3.90	..	5.33	..
11-25	76.73	47.82	62.50	75.00	54.75	18.87	38.64	50.30	58.77	..	55.77	73.33
26-100	16.98	39.13	37.50	25.00	32.89	50.94	42.93	31.15	29.17	100.00	31.24	16.67
101-200	100.00	2.52	2.88	18.87	12.88	10.55	6.18	..	6.57	10.00
201-300	..	0.63	8.70	..	1.32	..	4.65	2.79	1.70	..	0.29	..
301-500	11.32	0.54	0.12	0.21	..	0.73	..
501-1000	0.36	0.07	..
1001-1500	4.35
1501-2500
Above 2500
TOTAL	100.00	100.00	100.00	100.00	100.00	100.00	100.00	100.00	100.00	100.00	100.00	100.00

C. COMMUNITIES OTHER THAN S.C. & S.T.
C.I. HINDUS.

iii. Throughout the State except Malabar District (excluding Kasargod Taluk).

CASTE PARTICULARS.	KURUMBA
Below 5	..
6 - 10	..
11 - 25	6.82
26 - 50	47.73
51 - 100	45.45
101 - 200	..
201 - 300	..
301 - 500	..
501 - 1000	..
1001 - 1500	..
1501 - 2500	..
Above 2500	..
TOTAL	100.00

C. COMMUNITIES OTHER THAN S.C. AND S.T.
 C.1. Hindus. v) IN MALABAR DISTRICT EXCLUDING v1) IN KASARGOD TALUK
 IN KASARGOD TALUK

PARTICULARS.	CASTE	
	PARAVAN	MALAYAN
Below 5
6 - 10	4.96	33.33
11 - 25	76.86	66.67
26 - 50	13.23	..
51 - 100	4.13	..
101 - 200	0.88	..
201 - 300
301 - 500
501 - 1000
1001 - 1500
1501 - 2500
Above 2500
TOTAL	100.00	100.00

C. COMMUNITIES OTHER THAN S.C. & S.T.

C.II. CHRISTIANS CONTD.....

CASTE PARTICULARS.	C.II. CHRISTIANS CONTD.....		
	S.T. Converted to Christians.	S.I.U.C.	Syrian Catholics.
	11	12	13
Below 5	0.25
6-10	2.63	2.17	4.93
11-25	43.42	39.63	46.81
26-50	53.95	43.03	33.08
51-100	..	6.19	10.51
101-201	..	7.43	3.28
201-300	..	0.31	0.70
301-500	..	1.24	0.23
501-1000	0.15
1001-1500	0.03
1501-2500
Above 2500	0.03
TOTAL	100.00	100.00	100.00

Summary Table (8) - PERCENTAGE DISTRIBUTION OF HOUSEHOLDS ACCORDING TO MONTHLY PER CAPITA INCOME

Caste/Community Group	Scheduled Castes	Scheduled Tribes	Communities in		State
			specified areas	other than scheduled Castes & Scheduled Tribes	
Monthly per-capita income (Rs)					
Below 5	3.47	0.02	1.15	0.52	0.76
6 - 10	15.67	7.52	12.77	7.96	8.62
11 - 25	52.97	52.72	50.94	49.05	49.45
26 - 50	24.22	35.11	29.94	30.84	30.32
51 - 100	3.28	3.35	4.83	8.81	8.25
101 - 200	0.30	0.28	0.37	2.15	1.97
201 - 300	0.07	0.44	0.40
301 - 500	0.01	0.19	0.17
501 - 1000	0.05	0.05
1001 - 1500	0.01	0.01
1501 - 2500
Above 2500
ALL GROUPS	100.00	100.00	100.00	100.00	100.00

A. SCHEDULED CASTES

ii) Throughout the State except Kasargod Taluk

Table 9 contd....

No. of Rooms	CASTE PARTICULARS	
	Kanakkon or Padarnian	Panian
1	13.89	19.08
2	47.33	38.82
3	29.83	27.30
4	6.02	8.88
5	1.77	4.28
6	1.05	0.66
7
8	0.11	0.82
9	..	0.16
10
Above 10
TOTAL	100.00	100.00

A. SCHEDULED CASTES

iii) Throughout the State except Malabar District (excluding Kasargod Taluk.)

Table 9 contd...

CASTE PARTICULARS

Paraven

1

No. of Rooms

1	12.80
2	33.86
3	39.57
4	5.70
5	1.38
6	6.50
7	0.19
8	..
9	..
10	..
Above	..
TOTAL	100.00

A. SCHEDULED CASTES

(iv) Throughout the State except Malabar District

Table-9 contd....

No. of Rooms	CASTE PARTICULARS					
	Ayyanavar	Bharata	Boyan	Kakkalan	Kavara	Koodan
1	12.82	25.00	28.89	12.50	5.08	41.38
2	20.51	43.75	48.89	50.00	13.56	37.93
3	41.02	6.25	13.33	9.38	54.24	20.69
4	5.13	6.25	8.89	14.06	27.12	..
5	10.26	18.75	..	4.69
6	10.26	6.25
7	3.12
8
9
10
Above
TOTAL	100.00	100.00	100.00	100.00	100.00	100.00

Contd.....

A. SCHEDULED CASTE

iv) Throughout the state except Malabar District

Table 9 contd..	CASTE PARTICULARS				7	8	9	10	11
	Mannan	Padmanan	Pathiyam	Pulayan					
1	11.22	33.34	14.79	21.53					12.27
2	33.48	..	28.17	42.22					39.69
3	29.04	..	35.91	27.43					33.47
4	18.33	33.33	14.79	5.58					10.24
5	5.33	33.33	4.23	1.82					1132.17
6	1.46	0.75					1.13
7	0.63	0.43					0.45
8	0.19	0.17					0.58
9	0.13	0.07					..
10	0.19
Above 10	2.11
TOTAL	100.00	100.00	100.00	100.00					100.00

Contd..

Table 9 contd.. A. SCHEDULED CASTE
 iv) Throughout the state except Malabar District

No. of Rooms:	CASTE				
	Ulladan	Uraly	Valloon	Vetan	Vettuvan
1	36.54	15.44	..	46.57	8.93
2	50.96	50.00	50.00	35.19	36.90
3	12.50	19.86	50.00	12.02	39.09
4	..	7.35	..	2.37	8.93
5	..	7.35	..	2.79	2.98
6	1.06	1.98
7
8
9
10
Above 10	1.19
TOTAL	100.00	100.00	100.00	100.00	100.00

A - SCHEDULED CASTE

v) In Malabar District

Table 9 contd....

CASTE PARTICULARS	No. of Rooms									
	1	2	3	4	5	6	7	8	9	10
Adi- Aruntha	100.00	1.63	33.33	..	18.69	14.18	35.88	..
Aravida Karnataka Thiyar	..	73.98	100.00	100.00	41.67	..	44.85	53.19	43.33	..
Baira	..	16.26	66.67	30.60	30.50	19.80	..
Bekuda	..	8.13	25.00	33.33	3.94	2.13	0.20	..
Band	1.60	..	0.79	..
Cheruman	0.32
Holeya
Kalladi
Above 10
Total	100.00	100.00	100.00	100.00	100.00	100.00	100.00	100.00	100.00	100.00

Contd...

A - SCHEDULED CASTE

vi) In Malabar District (excluding Kasargod Taluk)

Table 9 contd...

CASTE PARTICULARS	No. of Rooms		Malayan
	1	2	
	Gavara		
1	23.21	9.89	
2	26.79	25.82	
3	35.71	46.15	
4	10.71	12.09	
5	..	3.85	
6	1.79	0.55	
7	1.79	1.10	
8	
9	..	0.55	
10	
Above 10	
Total	100.00	100.00	

B - SCHEDULED TRIBES

1) Throughout the State

Table 9 contd...

CASTE PARTICULARS	No. of Rooms		
	1	2	3
	Kadar	Irrular	Muthuvan
1	14.28	5.26	56.52
2	42.86	63.16	43.48
3	42.86	31.58	..
4
5
6
7
8
9
10
Above 10
Total	100.00	100.00	100.00

Table No.9 contd.. 184

I - SCHEDULED TRIBES

iii) In Malabar District

CASTE PARTICULARS	Adiyan	Kurichichan	Kurumans	Paniyan	Pulayan
	(1)	(2)	(3)	(4)	(5)
<u>No. of Rooms</u>					
1	28.10	8.18	17.49	43.06	19.77
2	56.57	59.54	4.32	37.44	48.87
3	13.14	11.82	40.39	14.72	21.61
4	1.82	7.73	16.20	4.78	6.67
5	0.37	7.73	21.60	..	2.27
6	..	1.82	0.60
7	..	2.73	0.21
8
9
10	..	0.45
Above 10
Total	100.00	100.00	100.00	100.00	100.00

B - SCHEDULED TRIBES

iv) In Malabar District (excluding Kasargod Taluk)

Table 9 contd....

Kurumbas

CASTE
PARTICULARS

1

No. of Rooms1
2
3
4
5
6
7
8
9
10..
94.64..
5.36

..

..

..

..

..

..

..

Above 10

..

Total

100.00

B - SCHEDULED TRIBES

v) In Kasargod Taluk

Table 9 contd..

No. of Rooms	CASTE PARTICULARS	
		Marati
1		6.67
2		34.67
3		57.33
4		1.33
5		..
6		..
7		..
8		..
9		..
10		..
Above 10		..
Total		100.00

C. COMMUNITIES OTHER THAN S.C. & S.T.

C.I. HINDUS

i) Throughout the State

Table 9 contd...	CASTE PARTICULARS	No. of Rooms									
		1	2	3	4	5	6	7	8	9	10
	Aduthon Aggsa vasi	1.19	50.00	8.45	33.33	..	2.09	7.41	8.00
	Ambala- Ammuku- dakap	..	75.00	11.30	..	24.69	66.67	21.05	6.27	24.57	58.00
	Araya Ballal Bandari Brahmin Chakka- Chakka- lan mar	100.00	25.00	20.48	..	35.55	..	36.84	14.45	25.88	24.68
		18.33	50.00	17.57	..	15.79	18.16	21.32	5.33
		19.05	..	5.71	..	15.79	16.11	6.58	1.33
		10.60	..	4.46	16.04	6.44	..
		7.26	..	1.59	7.20	2.75	1.33
		4.76	..	0.91	..	10.53	7.56	1.50	1.33
		2.98	..	0.47	3.71	1.74	..
		1.19	..	0.26	3.20	1.32	..
	Above 10	2.86	..	0.34	5.21	0.49	..
	TOTAL	100.00	100.00	100.00	100.00	100.00	100.00	100.00	190.00	100.00	100.00

contd...

C. I. HINDUS

1) Throughout the State

Table 9 contd.

CASTE PARTICULARS	1) Throughout the State									
	21	22	23	24	25	26	27	28	29	30
	Gownder	Gupta	Halu- kuruba	Heggade	Hindu Madiyar Nadar	Hindu	Jogi	Kalari Kallan kurup	Kammalas	
No. of Rooms	23.47	10.08	50.00	12.50	100.00	16.89	16.89	2.37	16.67	9.32
1	31.10	47.91	50.00	87.50	100.00	41.89	41.89	18.93	16.67	26.94
2	24.36	8.40	50.00	87.50	100.00	17184	17184	36.69	33.32	31.22
3	8.67	20.17	50.00	87.50	100.00	9.34	9.34	19.53	16.67	18.50
4	6.23	7.56	50.00	87.50	100.00	8.58	8.58	9.46	11.11	8.14
5	4.63	0.60	50.00	87.50	100.00	2.92	2.92	2.96	5.56	2.65
6	0.60	1.79	50.00	87.50	100.00	1.13	1.13	2.37	..	1.52
7	1.79	0.15	50.00	87.50	100.00	1.03	1.03	5.33	..	0.99
8	0.15	0.84	50.00	87.50	100.00	0.58	..	0.37
9	50.00	87.50	100.00	0.19
Above 10	50.00	87.50	100.00	0.47	0.47	1.78	..	0.13
TOTAL:	100.00	100.00	100.00	100.00	100.00	100.00	100.00	100.00	100.00	100.00

contd.

C. II. HINDUS

1) Throughout the State

Table 9 contd....

CASTE PARTICULARS	41	42	43	44	45	46	47	48	49	50
Krishna Vaka	..	13.10	29.60	..	25.00	13.40	18.18
Kudum-bis	..	35.52	31.97	14.29	66.67	14.29	33.33	100.00	65.72	18.18
Kusaven vala	..	27.41	21.82	28.57	8.33	14.29	33.33	..	14.49	9.09
Madi-shtra	..	15.50	10.63	42.85	..	28.57	3.27	18.18
Malar Mani yan	66.66	5.46	4.36	14.29	..	28.56	33.34	..	0.78	27.27
Mara-van	..	0.52	0.38	2.34	..
Marutha var	33.34	1.66	1.04	14.29	9.10
	..	0.21
	..	0.52

	..	0.10	0.20
Above 10
TOTAL:	100.00	100.00	100.00	100.00	100.00	100.00	100.00	100.00	100.00	100.00

No. of Rooms

1	..	13.10	29.60	..	25.00	13.40	18.18
2	..	35.52	31.97	14.29	66.67	14.29	33.33	100.00	65.72	18.18
3	..	27.41	21.82	28.57	8.33	14.29	33.33	..	14.49	9.09
4	..	15.50	10.63	42.85	..	28.57	3.27	18.18
5	66.66	5.46	4.36	14.29	..	28.56	33.34	..	0.78	27.27
6	..	0.52	0.38	2.34	..
7	33.34	1.66	1.04	14.29	9.10
8	..	0.21
9	..	0.52
10
Above 10	..	0.10	0.20

TOTAL:

100.00	100.00	100.00	100.00	100.00	100.00	100.00	100.00	100.00	100.00	100.00
--------	--------	--------	--------	--------	--------	--------	--------	--------	--------	--------

contd.....

C. I. HINDUS -

1) Throughout the State

Table 9 contd...

CASTE PARTICULARS	Moga ceera	Moili	Mooli yas	Mobvari Mudaliar	Mukku-lan	Mupper raj	Muthu-raj	Naidu	Naikkans	
	51	52	53	54	55	56	57	58	59	60
1	43.24	60.00	31.63	12.50	14.13	66.67	50.00	100.00	16.86	12.02
2	8.12	20.00	36.74	30.00	9.78	33.33	33.33	..	34.89	31.46
3	24.32	20.00	30.61	21.25	51.10	..	16.67	..	22.67	38.49
4	24.32	2.50	6.52	8.14	9.21
5	1.02	..	11.96	6.98	5.24
6	2.17	2.17
7	2.17	4.65	1.28
8	2.17	4.07	..
9
10	0.58	0.13
Above 10	1.16	..
TOTAL:	100.00	100.00	100.00	100.00	100.00	100.00	100.00	100.00	100.00	100.00

No. of Rooms

1) Throughout the State

Table 9 contd...

CASTE PARTICULARS	Pullon Pullu- yan		Puruzha Reddhar Siva- Vellala		Saliyas Senai- Thalavar		Shetty Thol- kollan yan		Thotti- yan	
	71	72	73	74	75	76	77	78	79	80

No. of Rooms

1	..	8.33	20.00	8.77	9.82	5.49	..	5.05
2	33.33	26.66	60.00	8.77	20.29	19.37	..	45.43	..	100.00
3	33.34	33.34	10.00	8.77	21.46	33.11	33.33	25.55	..	25.00
4	33.33	19.17	10.00	17.55	17.01	17.11	..	10.09	..	50.00
5	..	5.00	..	17.55	14.79	10.97	33.33	3.47
6	6	6.67	..	21.05	6.29	4.20	..	6.62
7	..	0.83	..	14.04	4.32	2.52	..	3.79
8	3.14	3.36
9	1.75	1.70	1.48	33.34
10
Above 10	1.75	1.18	2.39

TOTAL: 100.00 100.00 100.00 100.00 100.00 100.00 100.00 100.00 100.00 100.00 100.00

C-I-HINDUS

i) Throughout the state

CASTE	Ural	Vazhuvan	Vaisya Vakaliga	Valayan- jazhy	Veera- salvan	Vella Chettiar	Vellala thu Nair	Velutheda- thala Nadr	Vilaki-	
PARTICULARS	81	82	83	84	85	86	87	88	89	90

No. of Rooms:

1	12.58	25.00	16.67	10.44	15.10	6.97	8.12	7.10
2	29.56	37.50	41.67	28.21	37.74	23.43	24.73	27.82
3	17.61	43.47	25.00	31.34	39.61	23.08	28.97	34.28
4	27.67	13.04	8.33	17.41	5.66	18.25	21.09	16.75
5	10.69	17.39	..	9.60	..	12.34	10.06	7.31
6	0.63	8.70	..	1.80	1.89	5.90	3.76	2.91
7	1.26	4.35	..	0.48	..	6.08	0.97	0.71
8	0.36	..	2.15	0.24	2.63
9	0.12	..	0.54	0.36	0.28
10
Above 10	435	0.24	..	0.72	1.70	0.21
TOTAL	100.00	100.00	100.00	100.00	100.00	100.00	100.00	100.00

Contd..

Table No.9 (contd...)

		C-I-HINDUS		
		i) Throughout the state		
No. of Rooms	CASTE	Virakodi-	Yadava	Yogi
	PARTICULARS	vellalar		Kurukkal
1		..	5.99	10.00
2		..	28.54	10.00
3		100.00	34.46	20.00
4		..	17.37	40.00
5		..	7.88	6.67
6		..	2.55	10.00
7		..	2.26	..
8		..	0.29	..
9		3.33
10		..	0.22	..
Above 10		..	0.44	..
TOTAL		100.00	100.00	100.00

C-1-HINDUS

(iii) Throughout the state except Malabar District

Table 9 contd.

CASTE
PARTICULARS

Kurumba

1

No. of Rooms

1
2
3
4
5
6
7
8
9
- 10
Above 10

97.73
2.27

••
••
••
••
••
••
••
••
••
••
••

TOTAL

100.00

C-1-HINDUS

v) In Malabar District excluding Kasargod Taluk

CASTE PARTICULARS	Paravani
1	4.96
2	15.70
3	19.01
4	23.97
5	13.28
6	8.26
7	2.48
8	4.13
9	2.48
10	0.83
Above 10	4.96
TOTAL	100.00

Table 9(contd...)

C-1-HINDUS
vi) In Kasargod Taluk

CASTE
PARTICULARS
Malayan
I

No. of Rooms:

1	16.67
2	33.33
3	50.00
4	..
5	..
6	..
7	..
8	..
9	..
10	..
Above 10	..
TOTAL	100.00

Table 9(contd..)

C. COMMUNITIES OTHER THAN S.C. & S.T.

C-II-CHRISTIANS

i) Throughout the state

No. of Rooms:	CASTE PARTICULARS				
	Anglo-Indians	Syrian Christian	C.S.I.	Evangelical church	Independant Syrians
	1	2	3	4	5
1	3.44	1.43	9.49	7.73	16.67
2	18.84	10.00	22.24	12.27	36.67
3	35.51	8.57	22.53	22.72	10.00
4	20.11	5.71	14.97	21.82	23.33
5	8.15	4.29	11.82	15.91	..
6	5.80	40.00	6.20	14.55	13.33
7	3.08	..	6.84	0.45	..
8	0.36	14.29	0.84	1.82	..
9	3.80	..	2.24	0.91	..
10	0.18	..	0.78	0.91	..
Above 10	0.73	15.71	2.03	0.91	..
TOTAL	100.00	100.00	100.00	100.00	100.00

Co ntd..

C-II-CRISTIANS

i) Throughout the state

Table 9 contd..

CASTE PARTICULARS	i) Throughout the state									
	6	7	8	9	10	11	12	13		
Jacobites	4.44	8.56	5.81	7.39	21.98	10.53	0.93	3.95		
Latin Christians	19.54	23.21	18.72	27.29	38.58	39.47	19.50	21.15		
Marthomites	26.48	35.86	23.28	27.29	24.96	44.74	25.38	29.48		
S.I.U.C. Catholics	21.93	15.95	21.94	15.90	9.43	5.26	10.22	21.32		
S.T. converted to Christianity	12.62	7.01	11.96	9.45	3.30	..	6.19	11.74		
S.I.U.C. Catholics	6.64	4.90	6.96	3.58	1.02	..	13.93	5.31		
S.T. converted to Christianity	3.67	1.88	5.05	4.00	0.53	..	13.62	3.09		
S.I.U.C. Catholics	2.52	0.97	2.83	3.81	0.03	..	5.26	1.55		
S.T. converted to Christianity	0.89	0.75	1.26	0.12	0.17	..	1.24	1.08		
S.I.U.C. Catholics	0.45	0.39	0.89	0.82	2.17	0.52		
Above 10	0.72	0.52	1.39	0.35	1.56	0.81		
TOTAL	100.00	100.00	100.00	100.00	100.00	100.00	100.00	100.00	100.00	100.00

No. of Rooms:

204
C-III-MUSLIMS

i) Throughout the state

Table 9 contd....

CASTE

Muslims

PARTICULARS

No. of Rooms:

1	4.45
2	23.76
3	33.45
4	18.55
5	8.56
6	4.49
7	2.46
8	1.64
9	1.36
10	0.52
Above 10	0.76
TOTAL	100.00

Table 9(contd...)

C-IV-OTHERS

1) Throughout the state

CASTE PARTICULARS	No. of Rooms:				
	1	2	3	4	5
Gurkhas	57.14	19.43
Jains	42.86	5.56	33.33	100.00	66.67
Jews	..	2.78	33.33
Parsi	..	5.56
Sikhs	..	47.22	33.33
Above 10	..	11.11
TOTAL	100.00	100.00	100.00	100.00	100.00

Summary Table (9) PERCENTAGE DISTRIBUTION OF HOUSEHOLDS ACCORDING TO NUMBER OF ROOMS IN THE DWELLING HOUSE.

No. of Rooms	Scheduled Caste	Scheduled Tribe	Communities in specified areas	Communities other than S.C. & S.T.	State
1	20.91	22.91	6.38	5.91	7.46
2	42.77	46.25	40.20	22.69	24.77
3	26.34	21.03	35.15	30.05	29.60
4	6.57	5.99	12.23	19.23	17.95
5	2.04	3.20	3.02	9.74	8.98
6	0.87	0.36	1.71	5.19	4.74
7	0.23	0.22	0.59	2.95	2.67
8	0.19	..	0.24	1.76	1.60
9	0.04	0.02	0.16	1.09	0.98
10	0.01	0.02	0.13	0.63	0.57
Above 10	0.03	..	0.19	0.76	0.68
TOTAL:	100.00	100.00	100.00	100.00	100.00

PERCENTAGE DISTRIBUTION OF HOUSEHOLDS IN EACH CASTE/COMMUNITY ACCORDING TO TYPE OF POSSESSION OF DWELLING

e No.10

A. SCHEDULED CASTE

i) Through the State

CASTE PARTICULARS	CHAKKILIYAN KURAVAN NAYADI PALLAN PARAYAN OR VALLAVAN SAMBAVAR					
	(1)	(2)	(3)	(4)	(5)	(6)
<u>Type of Possessions</u>						
O w n e d	28.23	75.65	71.88	4.21	43.68	70.98
O t t i	12.44	0.86	1.52	2.35
R e n t e d	6.88	1.82	9.38	..	2.91	1.96
Kudikidappu	1.56	16.35	12.50	5.26	19.22	12.55
Kudiyiruppu	2.89	0.02	3.12	..	4.26	5.10
Purampokku	1.82	2.35
Others	48.00	5.30	3.12	90.53	26.59	4.71
T O T A L :-	100.00	100.00	100.00	100.00	100.00	100.00

ie No.10(contd...)

A. SCHEDULED CASTES

(ii) Throughout the State except Kasargod Taluk of Malabar District

<u>CASTE</u>	<u>PANAN</u>	<u>PANANNA</u>	<u>PANAN</u>
<u>Type of possession</u>			
Owned	56.68		61.51
Otti	0.54		3.29
Rented	1.66		3.95
Kudikidappu	23.34		16.94
Kudiyeruppu	14.72		9.87
Purampookku	2.66		0.49
Others	0.40		3.95
<u>TOTAL</u>	<u>100.00</u>		<u>100.00</u>

Table No.10(contd....)

1 SCHEDULED CASTES

(iii) through the state except Malabar District (excluding Kasargod Taluk)

CASTE	PARAVAN
<u>PARTICULARS</u>	
<u>Type of possession</u>	
Owned	54.53
Otti	2.17
Rented	7.48
Kudikidappu	26.38
Kudiyiruppu	2.36
Purampookku	2.36
Others	4.72
TOTAL	100.00

Table 10 (contd...)

A SCHEDULED CASTES

(vi) In Malabar District (excluding Kasargod Taluk)

Type of possession	CASTE PARTICULARS	
	CAVARA	MALAYAN
Owned	57.86	45.60
Otti	1.79	7.69
Rented	7.14	4.95
Kudikadappu	10.71	13.18
Kudiyiruppu	12.50	3.30
Purampokku	..	1.10
Others	..	24.18
TOTAL	100.00	100.00

Table No.10(contd..)

B. SCHEDULED TRIBES

i) Throughout the State

CASTE PARTICULARS KADAH ARRUIAR MUTHUVAN

Type of possession

Owned	42.86	100.00	43.48
Otti
Rented
Kudikidappu	57.14	..	21.74
Kudiyiruppu
Purampokku
Others	34.78

Total 100.00 100.00 100.00

B. SCHEDULED TRIBES

(iv) In Malabar District (excluding Kasargod Taluk)

CASTE

KURUMBAS

PARTICULARS

1

Possessions:

Owned	..	85.71
Otti
Rented	..	1.79
Kudikidappu	..	12.50
Kudiyiruppu
Purampokku
Others
TOTAL:	..	100.00

B. SCHEDULED TRIBES

(v) In Kasargod Taluk of Malabar District

PARTICULARS	CASTE	MARATI
<u>Possession:</u>		
Owned	1.33	1
Rented		
Of Kudikidappu	98.67	
Of Kudiyiruppu		
Of Purampokku		
Others		
TOTAL	100.00	

Table No.10(contd...)

C. Communities other than Scheduled Castes & Scheduled Tribes:

C.I. HINDUS - (1) Throughout the State (Continued)

CASTE PARTICULARS	C.I. HINDUS - (1) Throughout the State (Continued)										
	20	21	22	23	24	25	26	27	28	29	30
				HALLUKU- RUBA	HEGGADE	HINDU MADIYAR	HINDU NADAR	JOGI	KALARI- KURUP	KALLAN	KAMMA- LAS
Owned	71.93	56.06	98.32	..	37.50	..	46.33	64.29	61.54	77.78	70.62
Otti	..	1.49	5.00	..	4.14	..	1.47
Rented	..	4.63	..	100.00	50.00	..	8.58	35.71	7.10	16.67	10.14
Kudikidappu	15.79	3.14	12.50	..	6.89	..	14.79	..	10.95
Kudiyiruppu	7.37	..	1.68	0.09	..	8.28	..	2.91
Purampokku	..	0.15	0.19	..	2.37	..	0.73
Others	4.91	34.53	100.00	32.92	..	1.78	5.55	3.18
TOTAL:	100.00	100.00	100.00	100.00	100.00	100.00	100.00	100.00	100.00	100.00	100.00

Type of Possession:

(contd..)

Table No.10(contd....)

C. COMMUNITIES OTHER THAN SCHEDULED CASTES AND SCHEDULED TRIBES

C-1 - HINDUS (1) Throughout the State (Contd.)

CASTE PARTICULARS	72	73	74	75	76	77	78	79	80	81
	PULLUVAN	PURUZH	REDDIAR	SIVA VELLALA	SALIYAS	SENAI THALAVAR	SHEITY	THOLKOLLAN	THOTTIYAN	VRAN GOUNDER
Type of possession										
Owned	50.00	..	28.07	79.45	76.12	66.67	73.19	75.00	..	100.00
Otti	1.67	0.26	0.19
Rented	0.83	..	64.91	12.44	10.78	33.33	0.32
Kudikidappu	31.66	90.00	3.51	0.78	6.45	..	10.73	25.00
Kudiyiruppu	9.16	10.00	3.94	..	11.98	..	100.00	..
Purampokku	1.67	0.26
Others	5.01	..	3.51	6.81	2.52	..	3.78
Total	100.00	100.00	100.00	100.00	100.00	100.00	100.00	100.00	100.00	100.00

Table No.10(contd....)

C. COMMUNITIES OTHER THAN SCHEDULED CASTES AND SCHEDULED TRIBES

C1- HINDUS (ii) Throughout the States except Malabar District

Caste Particulars	AD I	ARUNTHATHI	CHEMAR	CHERUMAN	KUDUMBAN	SEMMAN	THOTTI	KATTUNAYAKAN	POVIYAN
	IRAVIDA	YAR							
Owned	36.12	1.01	12.50	..	100.00	..
Otti
Rented	..	100.00	..	2.85	0.75	87.50	100.00
Kudikidappu	29.28	0.13
Kudiyiruppu	28.90
Others	100.00	100.00	100.00	12.89	198.11	..	100.00
Total	100.00	100.00	100.00	100.00	100.00	..	100.00	100.00	100.00

C. COMMUNITIES OTHER THAN SCHEDULED CASTES & SCHEDULED TRIBESC.I. HINDUS - (iii) Through-out the State except Malabar District
(excluding Kasargod Taluk)CASTE

KURUMBA

PARTICULARSType of Possession:

Owned	..	90.91
Otti
Rented
Kudikidappu	..	9.09
Kudiyiruppu
Purampokku
Others

TOTAL:

.. 100.00

Table No. 10 (contd. . . .)
 C. COMMUNITIES OTHER THAN SCHEDULED CASTES & SCHEDULED TRIBES

C. I. HINDUS - (iv) In Malabar District

CASTE BHRATAR BOYAN KOODAN PADANNAN PALLUVAN MANNAN THANDAN URALI VALLON VETTUVAN
 PARTICULARS 1 2 3 4 5 6 7 8 9 10

Type of Possession

Owned	..	92.11	56.30	30.00	100.00	75.32	87.96	75.00	50.00	27.76
O t t l	2.52	2.31	0.33
Rented	100.00	2.63	..	10.00	..	2.96	1.00	..	50.00	0.43
Kudikidappu	32.78	60.00	..	7.84	4.02	25.00	..	65.70
Kudiyiruppu	8.40	6.17	6.69	4.93
Purampokku	2.06	1.07
Others	..	5.26	3.34	0.11

TOTAL: 100.00 100.00 100.00 100.00 100.00 100.00 100.00 100.00 100.00 100.00 100.00

Table No. 10 (contd..)

C. COMMUNITIES OTHER THAN SCHEDULED CASTES & SCHEDULED TRIBES

C.I. HINDUS - (v) In Malabar District excluding Kasaragod Taluk.

Type of Possession:	CASTE	
	PARAVAN	(1)
Owned	..	51.74
Otti.
Rented	..	1.65
Kudikidappu	..	2.48
Kudiyiruppu	..	3.30
Purampoke
Others	..	0.83
T O T A L	..	100.00

Table No.10(contd...)

C. COMMUNITIES OTHER THAN SCHEDULED CASTES & SCHEDULED TRIBES

C.I. HINDUS - (vi) In Kasaragod Taluk of Malabar District

CASTE	
M A L A Y A N (I)	
PARTICULARS	
Owned	33.33
O t t i	..
Rented	..
Kudikidappu	66.67
Kudiyiruppu	..
Purampoke	..
Others	..
TOTAL	100.00

Table No. 10 (contd..)

C. COMMUNITIES OTHER THAN SCHEDULED CASTES & SCHEDULED TRIBES

		C - II - CHRISTIANS (1) Throughout the State							
		ANGLO- INDIANS CHRISTIAN (1)	SYRIAN- CHRISTIAN (2)	C.S.I. (3)	EVANGELICAL CHURCH (4)	INDEPENDANT SYRIANS (5)	JACOBITES (6)	LATIN CHRISTIANS (7)	MARTHOMITES (8)
Owned		35.69	65.71	74.95	93.19	40.00	87.68	48.68	87.82
Owned		0.18	2.86	2.17	0.91	..	0.64	1.82	0.53
Rented		7.97	20.00	7.51	3.63	13.33	4.36	6.68	3.94
Kudikidappu		50.72	..	5.08	1.36	6.67	3.06	37.09	3.70
Kadaiyiruppu		1.99	8.57	0.53	0.86	1.01	0.72
Purampokku		..	2.86	2.09	0.67	0.94	0.02
Others		3.45	..	7.67	0.91	40.00	2.73	4.78	3.27
TOTAL:		100.00	100.00	100.00	100.00	100.00	100.00	100.00	100.00

(contd...)

Table No.10(contd..)

C. COMMUNITIES OTHER THAN SCHEDULED CASTES & SCHEDULED TRIBES

C - II - CHRISTIANS (1) Throughout the State (Contd...)

PARTICULARS	CASTE			
	O.D.C. (9)	SCHEDULED CASTES CONVERTED TO CHRISTIANITY (10)	SCHEDULED TRIBES CONVERTED TO CHRISTIANITY (11)	S.I.U.C. CATHOLICS (12) (13)
O w n e d	66.08	51.08	11.84	81.73 75.20
O t t i	1.70	4.02	..	9.60 0.99
Rented	7.28	2.56	..	2.48 7.35
Kudikidappu	6.75	33.44	31.58	.. 8.46
Kudiyiruppu	0.17	1.12	18.42	.. 3.53
Purampokku	0.12	0.15 1.22
Others.	15.90	7.63	38.16	6.19 3.25

TOTAL: 100.00 100.00 100.00 100.00 100.00

Table No.10(contd....)

C. COMMUNITIES OTHER THAN SCHEDULED CASTES & SCHEDULED TRIBES

C. III - MUSLIMS

PARTICULARS	MUSLIMS (1)
Owned	77.57
O t t i	1.64
Rented	4.47
Kudikidappu	10.05
Kudiyiruppu	3.30
Purampokku	0.46
Others.	2.51
T O T A L	100.00

Table No.10(contd....)

C. COMMUNITIES OTHER THAN SCHEDULED CASTES & SCHEDULED TRIBES

C. IV - OTHERS

PARTICULARS	CASTE				
	GURKHAS (1)	JAINS (2)	JEWS (3)	PARSI (4)	SIKHS (5)
<u>Type of Possessions</u>					
O w n e d	28.67	71.43	33.33	..	33.33
O t t i
Rented	71.43	28.57	66.67	100.00	66.67
Kudikidappu
Kudiyiruppu
Purampokku
Others
T O T A L	100.00	100.00	100.00	100.00	100.00

Summary Table (10)

PERCENTAGE DISTRIBUTION OF HOUSEHOLDS ACCORDING TO TENURE OF POSSESSION
OF DWELLING HOUSES

Caste/Community Group	Scheduled Castes	Scheduled Tribes	Scheduled Tribes specified areas	Communities in other than Scheduled Castes & Scheduled Tribes	State
Ownded	51.56	56.99	42.99	74.79	72.52
Mortgage with Possession	1.38	0.11	0.59	1.37	1.35
Rented	3.38	1.89	1.82	6.31	5.99
Kudikidappu	29.13	25.20	24.23	10.70	12.51
Kudiyirippu	4.57	9.60	7.48	2.90	3.14
Others	9.98	6.21	23.10	3.93	4.49
ALL TENURES	100.00	100.00	100.00	100.00	100.00

PERCENTAGE DISTRIBUTION OF MALES, FEMALES AND PERSONS IN EACH CASTE/COMMUNITY ACCORDING TO AGE GROUP.

A. SCHEDULED CASTE.

(1) Throughout the State.

Table No. 11.

CASTE	CHAKKILIZAN					KURUMBAN					NAYADI					PALLAN																															
	M	F	P	M	F	M	F	P	M	F	M	F	P	M	F	M	F	P	M	F																											
Below 5	9.83	10.42	10.14	12.77	12.45	12.61	12.61	7.95	19.09	14.14	7.62	16.56	12.81	24.44	26.96	26.80	25.39	24.31	24.84	21.59	24.55	23.23	28.70	23.70	25.80	60.32	54.47	57.26	56.43	56.26	69.33	51.82	59.60	59.19	57.14	58.00	5.41	6.15	5.80	5.41	6.98	1.13	4.54	3.03	4.49	2.60	3.39
TOTAL	100.00	100.00	100.00	100.00	100.00	100.00	100.00	100.00	100.00	100.00	100.00	100.00	100.00	100.00	100.00	100.00	100.00	100.00	100.00	100.00	100.00	100.00	100.00	100.00	100.00	100.00	100.00	100.00	100.00	100.00	100.00	100.00	100.00	100.00	100.00	100.00											

(1) (Contd.....)

CASTE	PARAYAN OR SAMBAVAR					VALLUVAN																	
	M	F	P	M	F	M	F	P	M	F													
Below 5	12.09	12.46	12.28	18.45	16.44	17.52	24.36	23.78	24.07	15.90	23.25	56.01	56.90	56.45	46.98	63.07	54.43	7.54	6.86	7.20	4.99	4.59	4.80
TOTAL	100.00	100.00	100.00	100.00	100.00	100.00	100.00	100.00	100.00	100.00	100.00	100.00	100.00	100.00	100.00	100.00	100.00	100.00	100.00	100.00	100.00	100.00	

A. SCHEDULED CASTE.

Table No. 11 (contd.....)

(11) Throughout the State except Kasargod taluk.

CASTE	KANAKKAN OR PADANNA		PANAN	
	M	F	M	F
Particulars				
<u>Age and Sex:</u>				
Below 5	15.92	15.31	12.09	10.29
5 - 14	26.91	20.90	24.72	25.26
15 - 59	52.23	58.96	56.43	58.25
60 and above	4.94	4.83	6.76	6.20
T O T A L	100.00	100.00	100.00	100.00

A. SCHEDULED CASTE.

Table No.

(11) Throughout the State except Malabar District (excluding Kasargod taluk).

CASTE	PARAVAN	
	M	F
Particulars		
<u>Age and Sex:</u>		
Below 5	10.78	13.01
5 - 14	27.63	26.95
15 - 59	54.36	55.48
60 and above	7.23	4.56
T O T A L:	100.00	100.00

Table No. II (contd.....) (iv) Throughout the State except Malabar District.

CASTE	AYYANAVAR			BHARATA			BOYAN			KAKKALAN		
	M	F	P	M	F	P	M	F	P	M	F	P
Age and Sex:												
Below 5	13.01	9.90	11.61	16.07	17.74	16.95	23.33	13.01	18.11	14.14	6.06	10.10
6 - 14	27.64	21.78	25.00	32.14	27.42	29.66	14.17	21.95	18.11	26.77	25.25	26.01
15 - 59	55.28	67.33	60.71	42.86	53.23	48.31	60.00	54.47	57.20	52.02	56.57	54.29
60 and above	4.07	0.99	2.68	8.93	1.61	5.08	2.50	10.57	6.58	7.07	12.12	9.60
TOTAL:	100.00	100.00	100.00	100.00	100.00	100.00	100.00	100.00	100.00	100.00	100.00	100.00

(iv) (Contd.....)

CASTE	KAVARA			KOODAN			MANNAN			PADANNAN		
	M	F	P	M	F	P	M	F	P	M	F	P
Age and Sex:												
Below 5	12.90	21.08	16.76	..	10.00	4.58	13.25	12.36	12.82	..	20.00	11.11
6 - 14	40.86	33.19	37.22	38.02	28.33	33.59	27.99	28.18	28.08	50.00	10.00	27.77
15 - 59	45.70	43.99	44.88	42.26	61.67	51.15	52.87	53.83	53.34	50.06	60.00	55.56
60 and above	0.54	1.80	1.14	19.72	..	10.68	5.89	5.63	5.76	..	10.00	5.56
TOTAL	100.00	100.00	100.00	100.00	100.00	100.00	100.00	100.00	100.00	100.00	100.00	100.00

A. SCHEDULED CASTE.

Table No. 11 (Contd.....)

(v) (Contd.....)

Particulars	SEMMAN		THOTTI	
	M	F	M	F
Age and sex:				
Below 5	8.69	10.81	58.33	14.29
6 - 14	17.39	28.33	41.67	85.71
15 - 59	39.13	43.24		
60 and above	34.79	10.81		
TOTAL	100.00	100.00	100.00	100.00

(vi) In Malabar District (excluding Kasargod taluk).

Particulars	GAVARA		MALAYAN	
	M	F	M	F
Age and sex:				
Below 5	13.25	15.18	8.06	9.47
6 - 14	28.92	27.22	28.38	31.23
15 - 59	52.41	52.47	57.88	52.98
60 and above	5.42	5.09	5.68	6.32
TOTAL	100.00	100.00	100.00	100.00

B. SCHEDULED TRIBES

Table No. 11 (Contd.)

(iv) In Malabar District (excluding Kasargod Taluk).

KURUMBAS

CASTE

Particulars

Age and Sex	M		F	
Below 5	12.57	10.54	11.60	
5 - 14	19.76	32.89	26.02	
15 - 59	61.08	48.68	55.17	
60 and above	6.59	7.89	7.21	
TOTAL	100.00	100.00	100.00	

(v) In Kasargod taluk of Malabar District.

CASTE

Particulars.

Age and Sex	MARATI		P	
	M	F	M	F
Below 5	23.20	10.65	17.28	
5 - 14	28.80	29.63	29.18	
15 - 59	43.20	52.31	47.42	
60 and above	4.80	7.41	6.02	
TOTAL	100.00	100.00	100.00	

Table No.11(Contd.....)

Particulars	VEJUTHEEDATHU NAIR		VILAKKITHALA NAIR		VEERAKODI VELLALAR		YADAVAS				
	M	F	M	F	M	F	M	F			
Age and Sex:											
Below 5	11.95	11.66	11.80	12.54	12.40	12.47	28.57	16.67	15.06	12.02	13.59
5 - 14	27.99	23.09	25.52	28.29	27.20	27.74	14.29	16.67	28.27	22.21	25.35
15 - 59	53.72	58.20	55.93	54.61	54.10	54.36	57.14	66.66	51.57	60.03	55.65
60 and above	6.34	7.05	6.70	4.56	6.30	5.43	5.10	5.74	5.41
TOTAL	100.00	100.00	100.00	100.00	100.00	100.00	100.00	100.00	100.00	100.00	100.00

(1) (Contd.....)

Particulars	YOGI KURUKKAL	
	M	F
Age and Sex:		
Below 5	10.84	11.41
5 - 14	16.51	39.47
15 - 59	37.83	49.12
60 and above	4.82	..
TOTAL	100.00	100.00

C.1. HINDUS.

Table No. 11 (Contd.....)

(ii) (Contd.....)

CASTE

PANIYAN

Particulars

M

F

P

Age and Sex:

Below 5	..	50.00	33.33
5 - 14
15 - 59	100.00	50.00	66.67
60 and above
T O T A L	100.00	100.00	100.00

(iii) Throughout the State except Malabar district (excluding Kasargod Taluk).

CASTE

KURUMBA

Particulars

M

F

P

Age and Sex:

Below 5	..	15.15	8.43
5 - 14	6.33	10.10	8.43
15 - 59	55.69	54.55	55.06
60 and above	37.98	20.20	28.08
T O T A L	100.00	100.00	100.00

C.1. HINDUS.

Table No. 11 (Contd.....)

(iv). (Contd.....)

CASTE	VALLUV		VETTUVAN	
	M	F	M	F
Particulars				
<u>Age and Sex:</u>				
Below 5	..	30.77	14.29	12.46
5 - 14	20.00	15.38	17.86	12.64
15 - 59	66.67	53.85	60.71	26.67
60 and above	13.33	..	7.14	55.61
TOTAL	100.00	100.00	100.00	100.00

Table No. (v) In Malabar District excluding Kasargod Taluk.

CASTE	PARAVAN	
	M	F
Particulars		
<u>Age and Sex:</u>		
Below 5	12.87	10.56
5 - 14	27.95	25.52
15 - 59	52.33	56.70
60 and above	6.85	7.22
TOTAL	100.00	100.00

Table No. 11 (Contd.) : 267 ;
 C.II. CHRISTIANS.
 (i) (Contd.)

SYRIAN CATHOLICS

Particulars	CASTE	
	M	P
<u>Age and Sex:</u>		
Below 5	12.87	12.91
5 - 14	30.26	29.68
15 - 59	50.34	50.90
60 and above	6.53	6.51
T O T A L	100.00	100.00

C.III. MUSLIMS.

(1) Throughout the State.

Particulars	CASTE	
	M	P
<u>Age and Sex:</u>		
Below 5	14.03	13.59
5 - 14	27.67	26.22
15 - 59	53.41	54.77
60 and above	4.89	5.42
T O T A L	100.00	100.00

C. IV. OTHERS.

Table No. 11 (contd.....) (1) Throughout the State.

CASTE	GURKHAS		JAINS		JEWES		PARSI		
	M	F	M	F	M	F	M	F	
Age and Sex:									
Below 5	21.05	10.53	15.79	14.02	14.28	14.15	14.28	21.43	17.86
5 - 14	21.05	36.84	28.95	34.58	35.72	35.16	50.00	42.86	46.43
15 - 59	57.90	47.37	52.63	46.73	49.11	47.95	35.72	28.57	32.14
60 and above	..	5.26	2.63	4.67	0.89	2.74	..	7.14	3.57
T O T A L	100.00	100.00	100.00	100.00	100.00	100.00	100.00	100.00	100.00

(1) (Contd.....)

CASTE	SIKHS	
	M	F
Particulars		
Age and Sex:		
Below 5
5 - 14	100.00	20.00
15 - 59	..	80.00
60 and above
T O T A L	100.00	100.00

Summary Table (1) PERCENTAGE DISTRIBUTION OF MALES - FEMALES AND PERSONS ACCORDING TO AGE GROUP

Caste/Community Group	Scheduled Caste		Scheduled Tribes		Communities in specified areas				
	Males	Females	Males	Females	Males	Females			
Age Groups (years)	1	2	3	4	5	6	7	8	9
Less than 5	12.96	13.29	13.12	11.59	11.77	11.68	12.14	11.12	11.63
6 - 14	26.15	24.28	25.21	26.01	25.99	26.00	27.53	25.31	26.42
15 - 59	55.51	56.77	56.15	57.96	56.88	57.43	55.21	58.54	56.88
60 and Above	5.38	5.66	5.52	4.44	5.36	4.89	5.12	5.03	5.07
ALL GROUPS	100.00	100.00	100.00	100.00	100.00	100.00	100.00	100.00	100.00

Contd..

PERCENTAGE DISTRIBUTION OF MALES - FEMALES AND PERSONS ACCORDING TO AGE GROUP

Caste/Community Groups Communities other than Scheduled Caste and Scheduled Tribes S T A T E

Age Groupers (years)	Males	Females	Persons	Males	Females	Persons
Less than 5	12.68	12.51	12.60	12.69	12.56	12.63
5 - 14	27.73	26.20	26.96	27.59	26.05	26.81
15 - 59	53.95	55.13	54.54	54.11	55.28	54.70
60 and Above	5.64	6.16	5.90	5.61	6.11	5.86
ALL GROUPS	100.00	100.00	100.00	100.00	100.00	100.00

1381

Confidential
(For official use only)

R e p o r t
on the
Sample Survey on
Socio-Economic conditions
of Castes/Communities
in Kerala

1
9
6
8

(Volume-I)

((()))

1381

