

STATISTICAL
HAND BOOK OF KERALA

Issued by

Bureau of Economics & Statistics
Kerala

1965

PRINTED BY THE S.G.P. AT THE GOVERNMENT PRESS,
TRIVANDRUM, 1966.

PREFACE

This Bureau published a Statistical Handbook of Kerala in 1964 giving basic information about the important aspects of the State's administration and economy. This is the second edition of the handbook. Every effort has been made to cover all important topics and to furnish the data for the latest period possible.

The tables have been prepared by this Bureau on the basis of the data collected from other Departments and Official publications. The results of surveys conducted by the Bureau have also been utilised in some of the tables. The sources of data have been indicated in the tables. A few tables giving all India figures have also been included.

Figures have been presented in metric units as far as possible. A conversion table is also appended at the end.

The Department wishes to acknowledge with thanks the co-operation extended to it by other Departments.

Suggestions for improvement of the publication are welcome.

Trivandrum,
30-12-1965.

Dr. P.K. GOPALAKRISHNAN,
Director,
Bureau of Economics & Statistics.

HAND BOOK 1965

CONTENTS

I. Population

	PAGE
1.1 Area and Population (District wise)	1
1.2 Rural and Urban Population	2
1.3 Male Female population	3
1.4 Age distribution of Population	4
1.5 Population according to Mother tongue	5
1.6 Population according to Religion	6
1.7 Workers and Non workers	7
1.8 Number of Towns, Villages and Household	9
1.9 Area and population of Major towns	10
1.10 Cities and Towns having population of 1 lakh and above	12
1.11 Cities and Towns having population of 50000 to 100000	13
1.12 Cities and Towns having population of 20000 to 50000	14
1.13 Population of scheduled castes and Scheduled Tribes	16

	PAGES	
1.14	Variation of Population	17
1.15	Density of Population (Decennial)	18
1.16	Population projections—(District-wise)	19
1.17	Population projections—Age group-wise	20

II. Medical and Public Health

2.1	Growth of Medical Institutions (Modern Medicine)	22
2.2	Medical Institution and Beds (Modern Medicine)	23
2.3	Medical Institution and Beds (Indigenous Medicine)	24
2.4	Registered Medical Practitioners	25
2.5	Number of family planning clinics	26

III. Climate and Rainfall

3.1	Temperature at selected centres	27
3.2	Relative Humidity	28
3.3	Rainfall	30

IV. Agriculture

4.1	Classification of Area	31
4.2	Area under Principal Crops	32
4.3	Production of Principal crops	34

4.4	Percentage of Area sown more than once	36
4.5	Agricultural Implements	38
4.6	Index Numbers of Agricultural Production	40

V. Irrigation

5.1	Area Irrigated	42
-----	----------------	----

VI. Forests

6.1	Area of Forest	43
6.2	Out-turn of Major Forest Produce	45

VII. Livestock and Veterinary

7.1	Live stock Population—Kerala	47
7.2	Live stock population (District-wise)	48
7.3	Veterinary Institutions	50
7.4	Live stock slaughtered in Municipalities	52
7.5	Per Capita availability of Milk	53

VIII. Fisheries

8.1	Marine fish Landings	54
8.2	Inland Fishing	55

IX. Power

	PAGES
9.1 Generation of Electricity	57
9.2 Consumption of Electricity	58
9.3 Number of Consumers	60

X. Minerals

10.1 Mineral Production	61
-------------------------	----

XI. Industries

11.1 Working Factories (Registered)	62
11.2 Industrial Production in selected Industries	68

XII. Labour and Employment

12.1 Employment in State Government	69
12.2 Employment in Registered Factories (District-wise)	70
12.3 Employment in Plantations i. Tea ii. Coffee iii. Rubber	76
12.4 Average daily earnings of factory labour	82
12.5 Agricultural Wages (Daily average)	83
12.6 Industrial Disputes	84
12.7 Trade Union movement	86

12.8	Applicants on the live register of Employment Exchanges	87
12.9	Candidates on the live register of Employment Exchanges (District-wise)	88

XIII. Police and Crimes

13.1	Sanctioned strength of Police	89
13.2	Incidence of Crimes	90
13.3	Road accidents	91

XIV. Registration

14.1	Number of Registered Documents	92
------	--------------------------------	----

XV. Education

15.1	Literacy	93
15.2	Educational Institutions, Scholars, etc. (Higher Education)	94
15.3	Educational Institutions, Scholars, etc. (School Education)	96
15.4	Direct Expenditure on Educational Institutions	98
15.5	Number of Harijan Scholars in Schools	100
15.6	Standard-wise distribution of scholars in schools (1964-65)	102

XVI. Local Bodies

16.1	Income of Municipalities	103
16.2	Expenditure of Municipalities	106
16.3	Income of Corporations	109
16.4	Expenditure of Corporations	110

XVII. Transport and Communications

17.1	Roads	111
17.2	Railways	112
17.3	Motor Vehicles	113
17.4	Posts and Telegraphs	114
17.5	State Transport (Passenger service)	115

XVIII. Trade

18.1	Exports from the Ports of Kerala (1963-64)	116
18.2	Imports into the Ports of Kerala (1963-64)	120
18.3	Value of exports from the Ports of Kerala (1951-52 to 1963-64)	124
18.4	Value of Imports into the ports of Kerala (1951-52 to 1963-64)	125

	PAGES
XIX. Prices	
19.1 Consumer Price Index Numbers (Working class)	126
19.2 Index Numbers of Wholesale Prices	127
19.3 Index Numbers of Parity Between Prices received and paid by farmers	128
XX. Joint Stock Companies	
20.1 Growth of Joint Stock companies	129
20.2 Joint Stock companies at work(Public)	130
20.3 Joint stock companies at work(Private)	132
XXI. Banks and Co-operation	
21.1 Commercial Banks	134
21.2 Co-operative Movement	136
XXII. Finance	
22.1 State Budget (Revenue Account) Revenue	137
22.2 State Budget (Revenue Account) Expenditure	138
22.3 State Budget (Capital Account) Receipts	140
22.4 State Budget (Capital Account) Expenditure	142

22.5	Growth of Tax and Non-Tax Revenue	144
22.6	Small Savings	146
22.7	Working of the Financial Corporation (Kerala)	148

XXIII. State Income

23.1	State Income of Kerala at 60-61 Prices (Sector-wise)	152
23.2	State Income of Kerala at Current prices	154

XXIV. Five Year Plans

24.1	Plan Expenditure and Provision	156
24.2	Third Plan at a Glance	158

XXV. Community Development

25.1	Coverage of N.E.S. Blocks (District-wise)	160
------	---	-----

ALL INDIA TABLES

I	Area and Population of Indian States	162
II	Towns and Villages by States	164
III	Distribution of Population according to Industrial categories	166
IV	Index Numbers of Agricultural Production	168
V	Index Numbers of Industrial Production	170
VI	Cows and She Buffaloes in Milk	172
VII	Industrial Disputes	174
VIII	Cognizable crimes	176
IX	Roads	178
X	Motor Vehicles	180
XI	Commercial Banks	182
XII	Co-operative Societies	184
XIII	Consumer Price Index Numbers	190
XIV	Index Numbers of wholesale prices	192
XV	Third Plan Outlay by States	194
	Conversion Table	

CHARTS

	<i>Facing Table</i>
1. Distribution of workers	1.7
2. Variation of Population	1.14
3. Age distribution of population	1.17
4. Health Services (Modern medicine)	2.1
5. Classification of area	4.1
6. Index numbers of Agricultural production	4.6
7. Electricity generated and sold	9.2
8. Distribution of registered factories	11.1
9. Employment in registered factories	12.2
10. Candidates on live register of Employment Exchanges	12.9
11. Literacy	15.1
12. Foreign Trade	18.3
13. Index numbers of wholesale prices	19.2
14. Growth of Joint Stock Companies	20.1
15. State Revenue Budget	22.1
16. Growth of Tax Revenue	22.5
17. Growth of Non-tax Revenue	22.5
18. State Income	23.1
19. Five Year Plans	24.1

KERALA AT A GLANCE

I. GENERAL

Location:	North latitude between 8°—18' and 12° —48'
	East longitude between 74°—52' and 77°—22'
Area	38855 Sq. K.M.
Percentage of area to area of Indian Union	1.3
Length of Coastal line	580 K.M.
Highest peak	Anamudi
Number of Rivers	44
Number of Districts	9
Number of Taluks	55
Number of Revenue Villages	1635
Number of Panchayats	922
Number of Corporations	2
Number of Municipalities	27
Number of M. L. As	133
Elected	132
Nominated	1
Number of M. Ps	27
Loka Sabha	18
Rajya Sabha	9
State Income (1960-61)	
Price 1963-64	Rs. 526.94 crores
State Income (current prices) 1960-61	Rs. 474.12 crores
Per capita Income 1960-61 at current prices	Rs. 283.07 crores
Per capita Income 1963-64 at 1960-61 prices	Rs. 294.41 crores

II. POPULATION (1961 CENSUS)

	<i>Kerala</i>	<i>India</i>
Total Population (in Million)	16.90	439.23
Male Population	8.36	226.29
Female Population	8.54	212.94
Rural Population	14.35	..
Urban Population	2.55	..
Density per sq. K. M.	435	144
Sex Ratio (per 1000 males)	1022	941
Literacy	46.8%	24.4%
Male Literacy	55.0%	34.4%
Female Literacy	38.9%	12.9%
Percentage Increase of Population (1951-61)	24.76	21.50

III. LAND USE AND CROPS (1963-64)

Area under Forest	1055	(in '000 Hectares)
Total cropped area	2462	do.
<i>Production of Major Crops</i>		
Rice	1128	('000 M. Tonnes)
Tapioca (Raw)	2524	do.
Cashewnut	92	do.
Pepper	22	do.
Ginger (Dry)	11	do.
Rubber	34	do.
Tea	41	do.

Cocoanut	3262	(in Million nuts)
Arecanut	8522	do.
Live-stock population (1961 census)	46.98	Lakhs
Poultry population	91.06	Lakhs
Number of Cows and She buffaloes in Milk Per 1000 population (1961 Census)	29	

IV. INDUSTRIES AND LABOUR

Number of registered factories	1963	2587
Employment in	1963	1.75 (lakhs)

V. POWER

Electricity generated	1964-65	795.11	Million KWH
Electricity consumed	1964-65	682.6	"
Industrial	"	532.5	"
Non-Industrial	"	150.1	"

VI. JOINT STOCK COMPANIES, BANKS AND
CO-OPERATIVE SOCIETIES

Number of commercial banks (1964)	21
Scheduled	3
Non-scheduled	18
Number of Joint Stock Companies (1963-64)	1031
Public	406
Private	625
Number of Co-operative Societies (Industrial and Non-Industrial 1962-63)	7763
Membership of Co-operative Societies	2117

('000)

VII. MEDICAL

Number of Hospitals and Dispensaries (allopathic) (1964-65)		479
Number of beds	do.	17501
Number of Hospitals and Dispensaries (Ind. Medicines) (1964-65)		263
Number of beds		847

VIII. EDUCATION

Number of schools for general education (1962-63)		10330
Number of scholars in schools for general education	lakhs	36.91
Boys	"	19.74
Girls	"	16.57
Number of schools for professional education		200
Number of scholars in schools for professional education		20614
Boys		14078
Girls		6536
No. of schools for special education		20
No. of scholars in schools for Special education		2105
Boys		1151
Girls		954
No. of Colleges (1962-63)		93
University Departments		1
General Education		48

Professional Education	36
Special Education	8
No. of colleges students (Total 1962-63)	57171
Males	39247
Females	17924
University Departments	311
Males	232
Females	79
Colleges for General Education	46133
Males	30592
Females	15541
Professional Colleges	10007
Males	7941
Females	2066
Special Colleges	720
Males	482
Females	238

IX. TRANSPORT AND COMMUNICATIONS

Road mileage (Open to traffic)	K.M.	17123
(Excluding Panchayat roads) (1963-64)		
Railway mileage (1964-65)	K.M.	888
Number of Motor Vehicles (1964-65)		43110
No. of Post Offices (1963-64)		3287
No. of Telegraph Offices (1963-64)		452
No. of Ports and Harbours		13

X. PLANNING AND COMMUNITY DEVELOPMENT

	(Rs. in crores)
Outlay on second five year plan	87
Expenditure	85
Outlay on the 3rd five year plan	170
Agriculture & Community Development & Co-operation	43
Irrigation and Power	59
Industry and Mining	17
Transport and Communication	11
Social Services and Miscellaneous	40
Number of Community Development Blocks	144

XI. STATE FINANCE (REVENUE ACCOUNT)

BUDGET ESTIMATE FOR 1965-66

	(Rs. in lakhs)
Revenue Receipts	8554.41
Expenditure	8773.13
Surplus	218.72

I. AREA AND POPULATION

TABLE 1.1

AREA AND POPULATION (DISTRICT-WISE) (1961 CENSUS)

District	Area		Popula- tion (in lakhs)	Density	
	Sq. Miles	Sq. K.M.		Per Sq. Mile	Per Sq. K. M.
Trivandrum	844	2186	17.45	2067	798
Quilon	1827	4732	19.41	1062	410
Alleppey	708	1834	18.11	2558	988
Kottayam	2456	6360	17.33	706	273
Ernakulam	1289	3339	18.60	1442	557
Trichur	1137	2945	16.40	1442	557
Palghat	1980	5127	17.77	897	346
Kozhikode	2570	6657	26.17	1018	393
Cannanore	2191	5675	17.80	812	314
Kerala	15002	38855	169.04	1127	435

Source: Registrar General, Government of India.

L. AREA AND POPULATION

TABLE : 1:2

RURAL AND URBAN POPULATION (1961 CENSUS)

District	Population (in lakhs)			% of Urban to total Population
	Rural	Urban	Total	
Trivandrum	12.96	4.49	17.45	25.73
Quilon	17.97	1.44	19.41	7.42
Alleppey	15.01	3.10	18.11	17.12
Kottayam	15.67	1.66	17.33	9.58
Ernakulam	14.65	3.95	18.60	21.24
Trichur	14.54	1.86	16.40	11.34
Palghat	16.05	1.72	17.77	9.68
Kozhikode	21.84	4.33	26.17	16.55
Cannanore	14.80	3.00	17.80	16.85
Kerala	143.49	25.55	169.04	15.11

Source: Registrar General, Government of India.

I. AREA AND POPULATION

TABLE 1.3

MALE AND FEMALE POPULATION (1961 CENSUS)

District	Population (in lakhs)			Sex Ratio (Females per 1000 males)
	Male	Female	Total	
Trivandrum	8.70	8.75	17.45	1005
Quilon	9.73	9.68	19.41	996
Alleppey	8.93	9.18	18.11	1027
Kottayam	8.83	8.50	17.33	963
Ernakulam	9.31	9.29	18.60	997
Trichur	7.85	8.55	16.40	1090
Palghat	8.52	9.25	17.77	1086
Kozhikode	13.01	13.16	26.17	1012
Cannanore	8.74	9.06	17.80	1035
Kerala	83.62	85.42	169.04	1022

Source: Registrar General, Government of India.

I. AREA AND POPULATION

TABLE 1.4

AGE DISTRIBUTION OF POPULATION (1961 CENSUS)

Age Group	Population ('00)		% of population in the age group		Total
	Male	Female	Male	Female	
0-4	13561	13142	16.2	15.4	15.8
5-9	11442	11254	13.7	13.2	13.4
10-14	9802	10077	11.7	11.8	11.8
15-24	15705	16773	18.8	19.6	19.2
25-34	11705	12491	14.0	14.6	14.3
35-44	8778	8761	10.5	10.2	10.4
45-54	6106	6053	7.3	7.1	7.2
55-64	3874	4015	4.6	4.7	4.6
Above 64	2646	2852	3.2	3.4	3.3
Total	83619	85418	100.0	100.0	100.0

Source: Registrar General, Government of India.

I. AREA AND POPULATION

TABLE 1.5

POPULATION ACCORDING TO MOTHER TONGUE
(1961 CENSUS)

District	Mala- yalam	Tamil	Kan- nada	Telu- gu	Mara- tti	Uru du	Hindi	Other Langu- ages
Trivandrum	1665271	70192	644	2438	736	1096	983	424
Quilon	1902335	31718	247	1761	133	415	577	242
Alleppey	1779531	14415	193	790	119	467	736	696
Kottayam	1550345	174183	1370	3599	87	101	262	81
Ernakulam	1778414	25804	1041	2056	1646	1377	2054	4297
Trichur	1599409	24003	1889	5284	238	522	517	109
Palghat	1579427	166075	4995	22788	120	1365	992	131
Kozhikode	2581956	15296	6130	4033	561	1440	598	2497
Cannanore	1629052	6022	45678	2089	14930	2379	608	436
Kerala	16065740	527708	62187	44838	18570	9162	7327	8913

Source: Registrar General, Government of India.

I. AREA AND POPULATION

TABLE 1.6

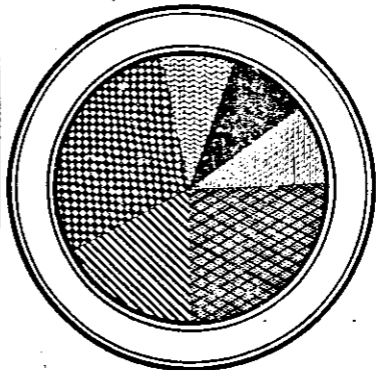
POPULATION ACCORDING TO RELIGION (1961 CENSUS)

District	Hindus	Christians	Muslims	Buddhists	Jains	Sikhs	Others
Trivandrum	1246965	309251	188246	15	10	11	33
Quilon	1243925	472005	224813	5	22	26	432
Alleppey	1184936	515400	110280	30	101	26	479
Kottayam	848234	817939	66310	3	..	34	360
Ernakulam	854896	792458	210040	143	993	692	691
Trichur	1035215	412052	192562	14	2	5	12
Palghat	1245031	33811	497705	1	13	5	..
Kozhikode	1386112	110874	1118851	17	1275	11	49
Cannanore	1237254	123575	418832	..	551	12	70
Kerala	10282568	3587365	3027639	228	2967	822	2126

Source: Registrar General, Government of India.



DISTRIBUTION OF WORKERS 1961



INDEX

CULTIVATOR, MINING AND QUARRYING,
LIVESTOCK ETC.

HOUSEHOLD INDUSTRY

MANUFACTURING OTHER
THAN HOUSEHOLD INDUSTRY

CONSTRUCTION, TRADE & COMMERCE,
TRANSPORT ETC.

OTHERS

AGRICULTURAL LABOURER

I. AREA AND POPULATION

TABLE 1.7

WORKERS AND NON-WORKERS (1961 CENSUS)

(in lakhs)

Category	Male	Female	Total	% population in the category
(1)	(2)	(3)	(4)	(5)
1 Cultivators	9.05	2.74	11.79	6.97
2 Agricultural Labourers	5.17	4.61	9.78	5.79
3 Mining, Quarrying, Livestock, Forestry etc.	3.98	0.89	4.87	2.88
4 Household Industry	1.89	3.00	4.89	2.89

(1)	(2)	(3)	(4)	(5)
-----	-----	-----	-----	-----

5	Manufacturing other than Household Industry	3.93	1.36	5.29	3.14
6	Construction	0.68	0.03	0.71	0.42
7	Trade and Commerce	2.98	0.24	3.22	1.90
8	Transport Storage & Communications	1.45	0.07	1.52	0.90
9	Other Services	10.34	3.89	14.23	8.42
	Total Workers	39.47	16.83	56.30	33.31
10	Total Non-workers	44.15	68.59	112.74	66.69
	Total Population	83.62	85.42	169.04	100.00

Source: Registrar General, Government of India.

I. AREA AND POPULATION

TABLE 1.8

NUMBER OF TOWNS, VILLAGES AND HOUSEHOLDS
(1961 CENSUS)

District	Towns		Revenue villages	House- holds
	Muni- cipal	Non- Municipal		
Trivandrum	3	10	94	312277
Quilon	1	2	99	338339
Alleppey	5	3	99	319822
Kottayam	4	3	101	303214
Ernakulam	7	5	112	308724
Trichur	3	4	244	277770
Palghat	2	5	304	321353
Kozhikode	2	15	332	440027
Cannanore	2	16	250	292366
Kerala	29	63	1635	2913892

Source: Registrar General, Government of India.

I. AREA AND POPULATION

TABLE 1.9

AREA AND POPULATION OF CORPORATIONS & MUNICIPALITIES (1961 CENSUS)

Corporation/ Municipality	Area (Sq. k.m.)	Popu- lation ('000)	Density (Sq. k.m.)
(1)	(2)	(3)	(4)
1. Trivandrum Corporation	44.52	239.82	5387
2. Neyyattinkara	10.00	20.27	2026
3. Attingal	14.16	22.05	1557
4. Quilon	16.34	91.02	5570
5. Kayamkulam	21.78	44.57	2046
6. Mavelikara	9.32	18.97	2036
7. Thiruvella	14.47	24.24	1675
8. Alleppey	46.78	138.83	2968
9. Sherthalai	16.18	31.15	1926
10. Kottayam	15.54	52.69	3390
11. Changanacherry	13.26	42.38	3196
12. Vaikom	8.73	17.42	1995
13. Palai	14.56	15.46	1062
14. Muvattupuzha	19.79	22.90	1158
15. Mattancherry	6.97	83.90	12037
16. Fort Cochin	2.80	95.07	12527

I AREA AND POPULATION

TABLE 1.9—(concl.d.)

AREA AND POPULATION OF CORPORATIONS & MUNICIPALITIES (1961 CENSUS)

Corporation/ Municipality	Area (Sq. k.m.)	Popu- lation ('000)	Density (Sq. k.m.)
(1)	(2)	(3)	(4)
17. Ernakulam	28.18	117.25	4161
18. Perumbavoor	11.50	16.15	1404
19. Alwaye	7.17	20.86	2910
20. Parur	8.62	20.85	2419
21. Irinjalakuda	12.10	22.33	1846
22. Trichur	12.67	73.04	5765
23. Kunnankulam	6.97	16.27	2334
24. Chittoor—Thatha mangalam	14.71	26.46	1799
25. Palghat	26.60	77.62	2918
26. Kozhikode Corporation	30.61	192.52	6289
27. Badagara	21.34	43.91	2058
28. Tellicherry	7.80	44.76	5738
29. Cannanore	10.83	46.10	4257
Total	474.30	1618.86	3414

Source: Registrar General, Government of India.

I. AREA AND POPULATION

TABLE 1.10

CITIES, TOWNS HAVING POPULATION OF ONE LAKH AND ABOVE

Name of Town	Status	Name of District	Population (1961 Census)			Sex Ratio
			Total	Male	Female	
Trivandrum	C	Trivandrum	239815	122318	117497	961
Calicut	M	Kozhikode	192521	97911	94610	966
Alleppey	M	Alleppey	138834	69977	68857	984
Ernakulam	M	Ernakulam	117253	60271	56982	945

C: Corporation

M: Municipality

Source: Registrar General, Government of India.

I. AREA AND POPULATION

TABLE 1.11

CITIES, TOWNS HAVING POPULATION OF 50000 TO 100000

Name of Town	Status	Name of District	Population (1961 Census)			Sex Ratio
			Total	Male	Female	
Quilon	M	Quilon	91018	46807	44211	945
Mattancherry	M	Ernakulam	83896	42671	41225	966
Palghat	M	Palghat	77620	38813	38807	1000
Trichur	M	Trichur	73038	36305	36733	1012
Kottayam	M	Kottayam	52685	26850	25835	962

M: Municipality

Source: Registrar General, Government of India.

I. AREA AND POPULATION

TABLE 1.12

CITIES, TOWNS HAVING POPULATION OF 20000 TO 50000

Name of Town	Status	Name of District	Population (1961 Census)			Sex Ratio
			Total	Male	Female	
Tellicherry	M	Cannanore	44763	21899	22864	1044
Kayamkulam	M	Alleppey	44571	22126	22445	1014
Badagara	M	Kozhikode	43908	21971	21937	998
Changanacherry	M	Kottayam	42376	21389	20987	981
Kilikollor	N.M.	Quilon	32273	16361	15912	973
Shertalai	M	Alleppey	31155	15382	15770	1025
Chowghat	N.M.	Trichur	28933	13454	15449	1148
Kasaragod	N.M.	Cannanore	27635	13643	13992	1026
Chittur-Thatta- mangalam	M	Palghat	26457	12840	13617	1061

Thiruvalla	M	Alleppey	24242	11750	12492	1063
Azhikode	N.M.	Cannanore	24212	12204	12008	984
Feroke	N.M.	Kozhikode	24124	12085	12039	996
Kanhangad	N.M.	Cannanore	23621	11713	11908	1017
Ponnani	N.M.	Palghat	22977	10939	12038	1100
Muvattupuzha	M	Ernakulam	22900	11837	11063	935
Katakampally	N.M.	Trivandrum	22488	11201	11287	1008
Irinjalakuda	M	Trichur	22335	10747	11588	1078
Chengannur	N.M.	Alleppey	22277	10850	11427	1053
Attingal	M	Trivandrum	22051	10914	11137	1020
Nileshwar	N.M.	Cannanore	20956	10174	10782	1060
Kundara	N.M.	Quilon	20945	10743	10202	950
Parur	M	Ernakulam	20852	10136	10716	1057
Haripad	N.M.	Alleppey	20378	9872	10506	1064
Neyyattinkara	M	Trivandrum	20268	10219	10049	983

M: Municipality
 N. M. Non-Municipal Town
 Source: Registrar General, Government of India.

I. AREA AND POPULATION

TABLE 1.13

POPULATION OF SCHEDULED CASTES AND SCHEDULED TRIBES
(1961 CENSUS)

District	Scheduled Castes		Scheduled Tribes			
	Total	Male	Female	Total	Male	Female
Trivandrum	161667	79987	81680	9939	5059	4880
Quilon	227411	113026	114385	2854	1438	1416
Alleppey	166707	83336	83371	625	317	308
Kottayam	158516	80361	78155	20822	10595	10227
Ermakulam	151151	75044	76107	9551	4891	4660
Trichur	163000	80198	82802	6575	3257	3318
Palghat	216590	105651	110939	20709	10422	10287
Kozhikode	134697	66817	67880	68299	34254	34045
Cannanore	42318	21289	21029	68622	33762	34860
Kerala	1422057	705709	716348	207996	103995	104001

Source: Registrar General, Government of India.



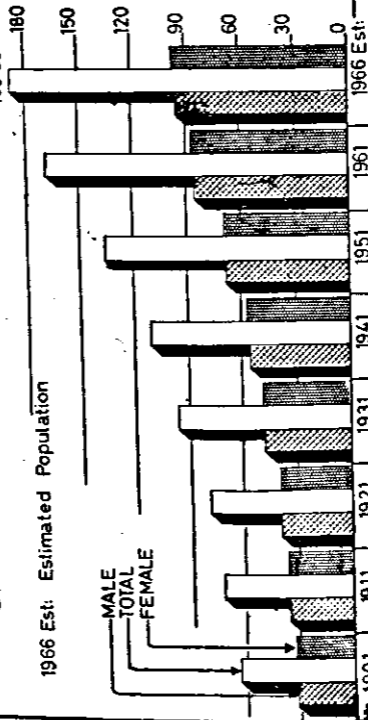
VARIATION OF POPULATION During the last sixty years.

in Lakhs

189.80

1966 Est: Estimated Population

MALE
TOTAL
FEMALE



I. AREA AND POPULATION

TABLE 1.14

VARIATION OF POPULATION

Year	Population (in lakhs)			Percentage decade variation
	Male	Female	Total	
1901	31.91	32.05	63.96	..
1911	35.60	35.88	71.48	+11.75
1921	38.79	39.23	78.02	+9.16
1931	47.03	48.04	95.07	+21.85
1941	54.44	55.88	110.32	+16.04
1951	66.82	68.67	135.49	+22.82
1961	83.62	85.42	169.04	+24.76
1966	191.37*	..
1971	217.01*	+22.11
1976	244.22*	..

(*Figures are estimates, Bureau of Economics & Statistics)

Source: Registrar General, Government of India.

I. AREA AND POPULATION

TABLE 1.15

DENSITY OF POPULATION (1901 TO 1961)

(No./Sq. mile)

Districts	1901	1911	1921	1931	1941	1951	1961
Trivandrum	574	675	790	1015	1203	1573	2067
Quilon	286	329	390	499	625	807	1063
Alleppey	944	1084	1285	1597	1799	2149	2558
Kottayam	194	228	265	362	441	541	706
Ernakulam	519	592	647	819	990	1187	1443
Trichur	579	653	692	846	985	1198	1442
Palghat	494	531	552	613	670	791	898
Kozhikode	448	487	500	580	651	804	1018
Cannanore	359	384	395	455	513	628	813
Kerala	423	468	521	634	736	904	1127

Source: Bureau of Economics & Statistics, Trivandrum
(Based on Census data).

I. AREA AND POPULATION

TABLE 1.16

POPULATION PROJECTIONS (DISTRICT-WISE)
(in lakhs)

District	1-3- 1961	1-3- 1966	1-3- 1971	1-3- 1976
Trivandrum	17.45	19.75	22.40	25.20
Quilon	19.41	21.98	24.92	28.05
Alleppey	18.11	20.51	23.25	26.17
Kottayam	17.33	19.62	22.25	25.04
Ernakulam	18.60	21.06	23.88	26.87
Trichur	16.40	18.56	21.05	23.69
Palghat	17.77	20.11	22.81	25.67
Kozhikode	26.17	29.63	33.60	37.81
Cannanore	17.80	20.15	22.85	25.72
Kerala	169.04	191.37	217.01	244.22

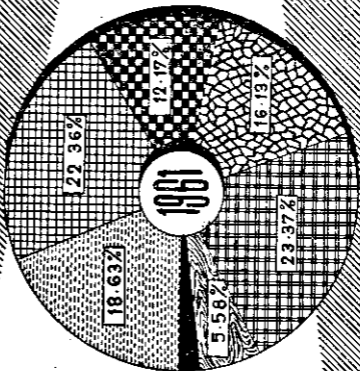
Source: Bureau of Economics & Statistics, Trivandrum (Based on figures of the Planning Commission, Government of India).

**L. AREA AND
TABLE
POPULATION PROJECTIONS.**

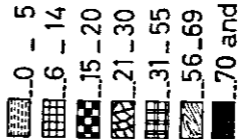
Age Group	1-3-1961	
	Male	Female
0—5	15.99	15.50
6—11	13.12	13.07
12—14	5.69	5.91
15—17	5.20	5.51
18—20	4.77	5.10
21—30	13.15	14.13
31—40	9.91	10.19
41—55	9.75	9.64
56—69	4.58	4.86
70 and above	1.46	1.51
Total	83.62	85.42

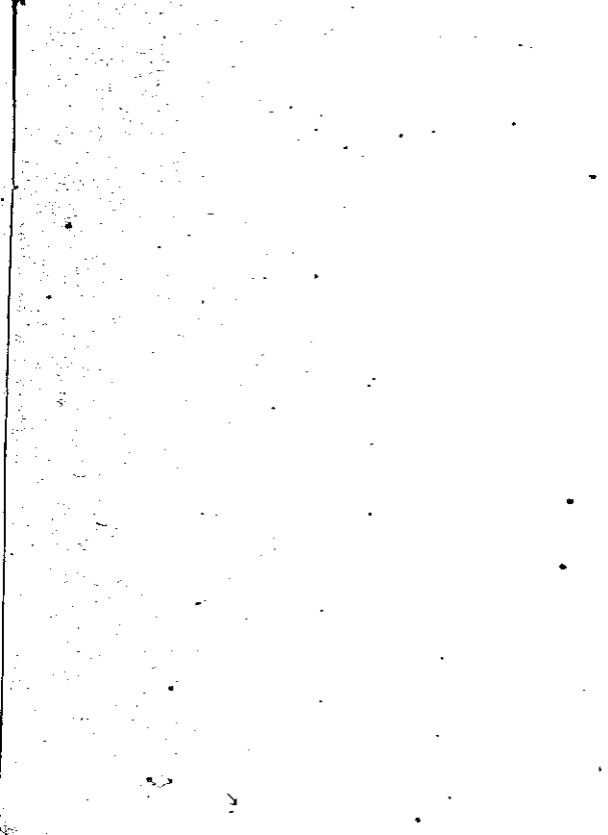
Source: Bureau of Economics & Statistics,
Commission, Government of India.)

AGE DISTRIBUTION OF POPULATION



Index





POPULATION

1.17

AGE GROUP & SEX-WISE

1-3-1966		1-3-1971		1-3-1976	
Male	Female	Male	Female	Male	Female
18.45	17.50	20.68	19.32	21.63	20.05
14.97	14.42	17.31	16.35	19.82	18.36
6.56	6.48	7.47	7.19	8.77	8.23
5.97	6.08	6.87	6.68	7.87	7.50
5.44	5.67	6.27	6.24	7.16	6.91
14.95	15.93	17.05	17.84	19.68	19.76
11.08	11.62	12.58	13.24	14.40	15.20
11.10	10.93	12.69	12.73	14.53	14.93
5.22	5.42	6.07	6.19	7.16	7.20
1.68	1.90	1.99	2.25	2.39	2.67
95.42	95.95	108.98	108.03	123.41	120.81

Trivandrum (Based on figures of the Planning

II. MEDICAL AND PUBLIC HEALTH

TABLE 2.1

GROWTH OF MEDICAL INSTITUTIONS
(MODERN MEDICINE)

Year	Number of Institutions	Number of Beds
1958-59	382	12352
1959-60	390	12810
1960-61	397	13978
1961-62	422	14108
1962-63	437	15753
1963-64	456	16681
1964-65*	479	17501

*Provisional

Source: Directorate of Health Services.

HEALTH SERVICES
(MODERN MEDICINE)

INDEX

2000BED'S (100 INSTITUTIONS)

1958-'59

|||||

|||||

1959-'60

|||||

|||||

1960-'61

|||||

|||||

1961-'62

|||||

|||||

1962-'63

|||||

|||||

1963-'64

|||||

|||||

1964-'65

|||||

|||||



II. MEDICAL AND PUBLIC HEALTH

TABLE 2.2

MEDICAL INSTITUTIONS AND BEDS (MODERN MEDICINE)

District	* Dispensaries and other Institutions				Beds
	Hospitals	1963-64	1964-65	1963-64	
Trivandrum	14	14	44	44	3955
Quilon	9	9	37	39	1149
Alleppey	10	10	35	38	2081
Kottayam	8	10	39	40	1273
Ernakulam	15	16	50	49	2371
Trichur	14	15	34	38	2383
Palghat	9	9	44	49	931
Kozhikode	11	11	39	43	2123
Cannanore	6	6	38	39	929
Kerala	96	100	360	379	16681
					17501

Source: Department of Health Services, Kerala
 (* This item includes Secondary Health Centres, Primary Health Centres, M. C. H. Centres, Grant-in-aid institutions, Dispensaries including T. B. Clinics and the Mobile Dental Hospitals.)

II. MEDICAL AND PUBLIC HEALTH

TABLE 2.3.

MEDICAL INSTITUTIONS AND BEDS (INDIGENOUS MEDICINE)

District	Government Hospitals		Government Dispensaries		Beds (Government Hospitals)	
	1963-64	1964-65	1963-64	1964-65	1963-64	1964-65
Trivandrum	7	7	18	18	344	344
Quilon	3	3	25	25	40	40
Alleppey	6	6	26	26	50	50
Kottayam	5	5	16	16	100	100
Ernakulam	7	7	29	29	110	110
Trichur	8	8	45	45	103	103
Palghat	4	4	24	24	40	40
Kozhikode	2	2	18	18	20	20
Cannanore	3	3	17	17	30	30
Kerala	45	45	218	218	837	847

Source: Department of Indigenous Medicines, Kerala.

II. MEDICAL AND PUBLIC HEALTH

TABLE 2.4

REGISTERED MEDICAL PRACTITIONERS

Category	Number 1964
<i>Modern Medicine:</i>	
(i) Medical Graduates	1415
(ii) Medical Licentiate	491
(iii) Others ('B' Class Registered and Listed Practitioners)	795
(iv) Nurses (Class 'A' and Class 'B')	1093
(v) Midwives (Class 'A' and Class 'B')	1564
<i>Indigenous Medicines:</i>	
Ayurveda Class 'A'	1973
" Class 'B'	6091
" Listed	587
Siddha Class 'A'	7
" Class 'B'	1218
" Listed	41
Unani Class 'A'	Nil
" Class 'B'	51
" Listed	5
<i>Homoepathic Medicine</i>	
Class 'A'	192
Class 'B'	1485
Listed	275

Source: Registrar of Medical Council, Trivandrum.

II. MEDICAL AND PUBLIC HEALTH

TABLE 2.5

INSTITUTIONS WHERE STERILISATION OPERATIONS ARE CONDUCTED

District	Number	
	1963-64	1964-65
Trivandrum	10	
Quilon	6	
Alleppey	10	
Kottayam	7	
Ernakulam	13	N.A.
Trichur	8	
Palghat	6	
Kozhikode	9	
Cannanore	7	
State	76	

Source: Bureau of Economics and Statistics.

III. CLIMATE AND RAINFALL

TABLE 3.1

TEMPERATURE AT SELECTED CENTRES (IN 0 CENTIGRADE)

Centre	1962		1963		1964	
	Maxi- mum	Mini- mum	Maxi- mum	Mini- mum	Maxi- mum	Mini- mum
Trivandrum	32.4	22.4	32.4	22.2	30.8	23.5
Punalur	35.3	21.4	34.5	20.8	30.9	22.1
Alleppey	32.9	22.5	33.2	22.3	31.1	23.9
Fort Cochin	32.3	23.9	32.8	23.2	30.0	24.0
Palghat	36.8	21.7	37.1	21.8	32.6	23.1
Kozhikode	33.2	22.1	33.2	22.3	30.7	23.7

Source: Meteorological Centre, Madras.

III. CLIMATE

TABLE

RELATIVE HUMIDITY AT

Month	Trivandrum		Punalur		Alleppey	
	8.30 I.S.T.	17.30 I.S.T.	8.30 I.S.T.	17.30 I.S.T.	8.30 I.S.T.	17.30 I.S.T.
January	76	64	79	81	72	61
February	77	63	72	41	75	65
March	77	68	82	64	79	69
April	81	72	84	72	81	69
May	80	69	86	69	84	71
June	84	76	92	82
July	92	83	94	91	96	87
August	88	80	93	91	93	83
September	89	80	94	94	93	84
October	87	82	94	89	91	81
November	85	78	93	88	91	75
December	74	65	83	80	79	66

Source: Regional Meteorological Centre, Madras

AND RAINFALL

3.2

SELECTED CENTRES 1964

Fort Cochin		Palghat		Kozhikode	
8.30 I.S.T.	17.30 I.S.T.	8.30 I.S.T.	17.30 I.S.T.	8.30 I.S.T.	17.30 I.S.T.
66	63	67	37	73	62
72	66	65	33	73	66
77	71	69	41	75	70
80	76	72	54	75	72
83	82	76	59	74	72
89	84	..	—	87	82
92	88	91	84	93	88
88	86	90	83	93	90
90	87	88	80	90	87
86	83	86	79	88	84
83	79	83	70	83	75
70	68	68	51	75	62

III. CLIMATE AND RAINFALL

TABLE 3.3

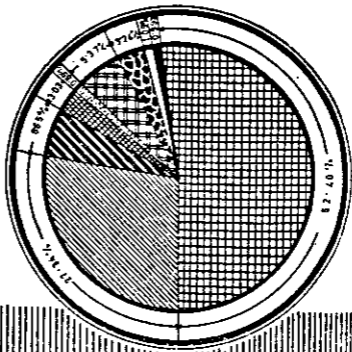
RAINFALL

District	Normal No. of rain- fall stations (m.m.)	Average annual rainfall (m.m.)					
		1960	1961	1962	1963	1964	
Trivandrum	2001.6	8	2514.4	2809.9	2396.7	1939.0	1768.7
Quilon	2760.2	10	3322.0	3148.3	2891.9	2365.0	2496.3
Alleppey	3020.9	9	3635.3	3894.1	3717.0	3043.9	2904.3
Kottayam	2994.5	15	3404.2	3607.1	3204.2	2404.2	2838.7
Ernakulam	3577.5	10	3963.5	3828.5	3798.2	3036.5	3415.9
Trichur	3159.4	4	3592.6	4402.7	3359.7	2574.5	2944.5
Palghat	2459.2	9	2799.5	3713.2	2935.5	2145.1	2288.2
Kozhikode	3461.3	8	3441.7	6428.1	4069.1	2934.0	3392.2
Cannanore	3437.9	8	3476.4	5506.8	3729.2	3153.6	2623.0
Kerala	2985.8	81	3350.0	4148.7	3344.6	2621.8	2741.3

Source: Meteorological Department, Government of India for normals and the State Observatory.



CLASSIFICATION OF AREA 1963-'64



Forests

Land put to Non-Agricultural uses

Barren & Uncultivable Land

Permanent Pastures & Grazing Land

Land under Miscellaneous Tree Crops

Cultivable waste

Fallow land (other than current fallow)

Current fallow

Net area sown

IV. AGRICULTURE

TABLE 4.1

CLASSIFICATION OF AREA

Classification	Area ('000 Hectares)			% of total area according to village papers 1963-64
	1961-62	1962-63	1963-64	
1 Area according to village papers	3858	3858	3858	100.00
2 Forests	1056	1056	1055	27.34
3 Land put to Non-agricultural uses	209	214	218	5.65
4 Barren & Uncultivable land	146	121	117	3.03
5 Permanent Pastures & other grazing lands	45	35	34	0.89
6 Land under Miscellaneous tree crops	202	209	207	5.37
7 Cultivable waste	141	127	125	3.24
8 Fallow land (other than current fallow)	61	43	42	1.09
9 Current fallow	66	44	38	0.99
10 Net area sown	1932	2009	2022	52.40
11 Total cropped area	2341	2447	2462	63.80

Source: Bureau of Economics & Statistics, Government of Kerala.

IV. AGRICULTURE

TABLE 4.2

AREA UNDER PRINCIPAL CROPS

('000 hectares)

Name of crop	1952-53	1955-56	1960-61	1961-62	1962-63	1963-64
1 Rice	742	759	779	753	802	805
2 Tapioca	205	222	242	237	222	210
3 Pulses & Other food grains	46	57	57	57	57	58
4 Groundnut	11	13	16	16	16	15
5 Sugarcane	6	7	9	14	9	9
6 Pepper	79	86	100	100	99	99
7 Cashew nut	35	37	54	55	82	82
8 Banana & Plantain	31	47	44	43	43	43

9	Tea	45	40	38	37	38	38
10	Rubber	63	65	123	133	138	143
11	Coffee	13	14	17	19	19	20
12	Ginger	14	10	12	12	12	12
13	Turmeric	5	5	5	5	5	5
14	Sesamum	19	20	12	12	12	12
15	Cardamom	26	28	29	29	29	29
16	Cocoanut	430	448	501	505	539	545
17	Arecanut	60	58	54	57	55	57
18	Cotton	6	9	10	10	8	8
							33

Source: Bureau of Economics & Statistics, Government of Kerala.

IV. AGRICULTURE

TABLE

PRODUCTION OF

Name of Crop	Unit	1952-53
1. Rice	'000 M.T.	722.4
2. Tapioca	"	1514.4
3. Pulses	"	13.6
4. Groundnut	"	13.9
5. Sugarcane	"	29.7
6. Pepper	"	22.6
7. Cashewnut	"	54.7
8. Banana & Plantain	"	208.7
9. Tea	"	30.2
10. Rubber	"	19.3
11. Coffee	"	5.1
12. Ginger	"	10.2
13. Turmeric	"	5.1
14. Sesamum	"	5.9
15. Cardamom	00 M.T.	12.3
16. Cocomanut	Million Nuts	2978
17. Arecanut	"	4448
18. Cotton	'000 Bales of 392 lbs.	7.0

Source: Bureau of Economics & Statistics,

CULTURE

4.3

PRINCIPAL CROPS

Production				
1955-56	1960-61	1961-62	1962-63	1963-64
884.0	1067.6	1004.0	1093.3	1128.1
1594.2	1683.1	1644.6	1540.0	2523.7
17.6	17.5	17.1	17.3	17.1
14.5	13.8	13.7	13.5	20.7
34.0	38.1	37.7	41.7	44.1
27.7	27.0	26.9	24.5	22.4
58.8	84.6	85.8	92.0	92.3
316.8	327.9	317.3	327.3	325.8
30.4	40.4	38.0	38.8	41.0
21.2	23.1	24.9	29.1	33.8
6.3	7.4	8.2	8.5	8.5
11.1	11.3	11.3	11.4	11.2
5.1	4.2	4.3	4.3	3.9
6.5	2.6	2.5	2.6	2.6
12.0	12.8	12.8	12.8	12.8
3099	3220	3247	3305	3262
6460	7737	8091	8312	8522
9.6	10.6	10.3	7.5	8.0

Government of Kerala.

IV. AGRICULTURE
TABLE

PERCENTAGE OF AREA SOWN MORE THAN

Districts	1960-61
Trivandrum	33.23
Quilon	23.70
Alleppey	40.39
Kottayam	10.56
Ernakulam	9.68
Trichur	56.23
Palghat	31.72
Kozhikode	12.85
Cannanore	12.16
Kerala	22.10

Source: Bureau of Economics & Statistics,

CULTURE

4.4

ONCE TO NET AREA SOWN

1961-62	1962-63	1963-64
32.26	31.84	30.63
23.18	25.52	27.12
39.41	39.48	37.61
10.37	10.41	9.70
8.22	10.78	15.11
49.31	52.04	50.41
31.74	33.24	31.64
11.26	11.17	9.56
12.08	11.00	13.30
21.19	21.76	21.74

Government of Kerala.

IV. AGRI
TABLE
AGRICULTURAL

District	Ploughs		Carts
	Wooden	Iron	
Trivandrum	26691	217	1905
Quilon	51355	1544	2295
Alleppey	24475	2446	1015
Kottayam	38802	232	1676
Ernakulam	78417	338	1037
Trichur	56337	220	2697
Palghat	144736	598	8558
Kozhikode	79108	242	1162
Cannanore	62360	604	695
Kerala	562281	6441	21040

Source: Agricultural Implements in Kerala

CULTURE

4.5

IMPLEMENTS, 1961

Sugarcane crushers		Oil Engines	Electric pumps	Tractors	Ghanies	
Power Bullocks					More than 5 Seers	Less than 5 Seers
11	53	4	15	3	216	437
4	217	28	22	4	99	213
42	186	407	358	73	138	193
16	223	213	294	93	136	141
20	138	245	676	22	80	125
8	48	532	774	20	190	234
63	86	845	353	23	504	194
4	39	378	58	26	397	277
7	81	720	15	12	298	350
175	1071	3372	2565	276	2058	2164

(1961 Census).

IV. AGRICULTURE

TABLE 4.6

INDEX NUMBERS OF AGRICULTURAL PRODUCTION
(BASE 1956-57=100)

Item	1952-53	1955-56	1960-61	1961-62	1962-63	1963-64
All Crops	89.3	98.7	112.1	110.4	114.7	116.8
Food Grains	81.3	100.3	119.8	112.9	122.8	126.6
Cereals	81.4	100.4	120.1	113.1	123.1	126.9
Paddy	81.4	99.6	120.2	113.1	123.2	127.1
Jowar	50.7	94.7	72.7	70.4	70.4	67.5
Ragi	81.4	91.3	117.6	112.0	111.9	110.9
Pulses	73.1	94.1	93.9	91.8	92.4	91.7
Non-food grains	92.6	98.1	108.9	109.3	111.4	112.8
Oil Seeds	93.2	97.2	102.3	103.2	104.7	104.2
Cocoanut	93.4	97.4	102.5	103.4	105.2	103.8
Groundnut	87.6	91.0	86.8	86.5	85.1	130.6
Sesamum (Oil)	91.7	100.2	40.1	40.0	40.0	40.3
Lemongrass Oil	89.8	89.8	168.4	169.8	160.6	161.6
Fibres	70.2	95.6	106.1	103.0	75.3	80.3
Cotton	70.2	95.6	106.1	103.0	75.3	80.3

(contd.)

INDEX NUMBER OF

AGRICULTURAL PRODUCTION



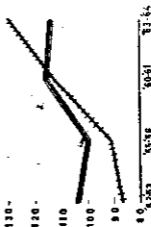
INDEX

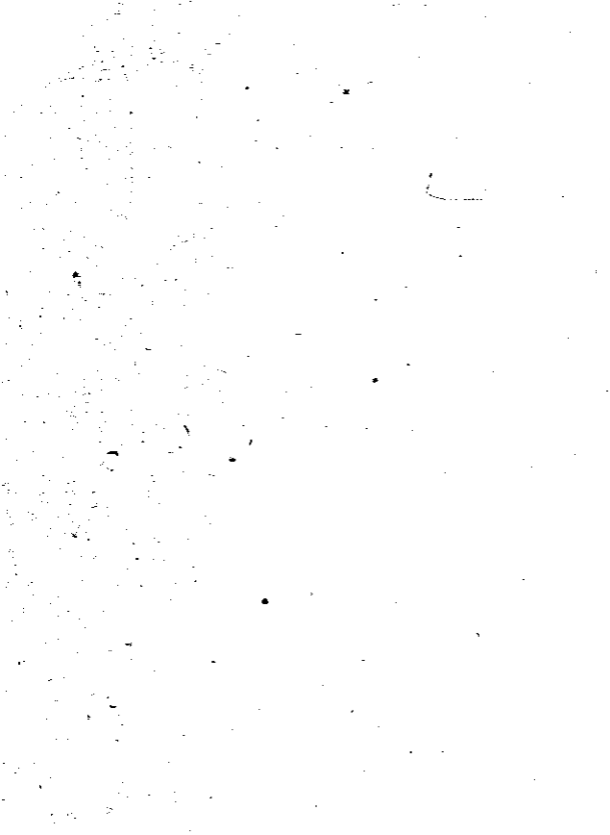
- ALL CROPS
- - - FOOD GRAINS
- + + + NON-FOOD GRAINS



INDEX

- PADDY
- - - OIL SEEDS
- + + + PLANTATION CROPS
- MISCELLANEOUS CROPS





Item	1952-53	1955-56	1960-61	1961-62	1962-63	1963-64
Plantation Crops	86.4	90.9	112.3	112.6	119.4	129.5
Tea	87.1	87.5	116.3	109.5	111.6	118.1
Coffee	76.1	93.1	110.3	123.2	126.3	127.6
Rubber	89.1	97.8	106.4	116.3	134.1	156.0
Miscellaneous Crops	95.8	103.7	114.6	114.8	116.2	113.4
Sugar Cane	82.3	94.9	106.4	105.3	116.5	123.1
Pepper	83.0	101.6	99.2	99.0	89.8	82.3
Cardamom	88.6	99.8	100.2	100.2	100.2	100.2
Ginger	93.5	102.2	103.6	104.5	105.1	103.8
Turmeric	120.5	121.6	99.7	103.4	102.9	93.3
Arecanut	103.3	100.0	116.9	122.2	125.5	128.6
Banana	74.1	112.4	102.2	88.4	120.8	117.5
Tapioca	94.4	100.2	144.2	146.2	156.8	100.9
Cashewnut	105.2	114.9	150.4	139.0	137.3	157.3
Tobacco	98.2	108.3	116.4	113.7	106.5	137.4

Note: Revised Set of figures.

Source: Bureau of Economics and Statistics, Government of Kerala

V. IRRIGATION
TABLE 5.1

AREA IRRIGATED IN KERALA—SOURCE-WISE
(*000 Hectares)

Source	1960-61	1961-62	1962-63
Government Canals	133.65	140.42	147.93
Private Canals	5.74	5.74	5.74
Tanks	46.95	48.25	39.57
Wells	2.03	2.03	2.03
Other Sources	130.95	130.95	130.95
Total	318.72	327.39	336.22
Ratio of net area irrigated to net area sown	16.57%	16.95%	16.73%
Area irrigated more than once in an year	137.55	138.69	139.93
Total Irrigated Area	456.27	466.08	476.15
Ratio of total irrigated area to total Cropped area	19.42%	19.91%	19.46%

Source: Bureau of Economics and Statistics, Government of Kerala.

VI. FORESTS

TABLE 6.1

AREA OF RESERVED FORESTS AND RESERVED LANDS (1963-64)

Name of Division	Reserved Forests		Reserved Lands	
	Acres	Hectares	Acres	Hectares
Trivandrum	140432	56831	1439	582
Thenmala	140312	56782
Punalur	72472	29328
Konni	82881	33541	2723	1102
Ranni	201862	81691	1771	717
Kottayam	218694	88502	1299	526
Malayattur	168236	68083	38	15
Munnar	210072	85013

TABLE 6.1—(contd.)

Name of Division	Reserved Forests		Reserved Lands	
	Acres	Hectares	Acres	Hectares
Chalakudy	213559	86424
Trichur	129613	52453
Game Sanctuary	139520	56462
Nenmara	119625	48411
Palghat	91914	37196	274	111
Nilambur	66127	26761	14132	5719
Kozhikode	82744	33485	8020	3246
Wynad	108694	43987	7719	3124
Total	2186757	884950	37415	15142

Source: Forest Department.

VI. FORESTS

TABLE 6.2

OUT TURN OF MAJOR FOREST PRODUCE (1963-64)

Name of Division	Timber		Fuel	
	Round logs (Cu.M)	Round poles (Numbers)	Sawn & Squared	Tons & Bags
Trivandrum	8834	1002
Thenmala	3163	23397	..	3368
Punalur	9113	3845	2.086 Cu.M	9018
Ranni	21063	3161	..	13175
Konni	10664	26472	..	1023
Kottayam	31734	630	1.169 Cu.M	13505 Charcoal 19670 Bags

Malayattur	11489	17851	20,000 Cu.M	31
Munnar	12257	266	261,000 Cu.M	982
Chalakudy	38257	5021	..	16356 Charcoal 8750 Bags
Trichur	11158	7805	..	11025
Nenmmara	25866	5156	..	1614
Palghat	2725	5982	46168 B. G. Units	2853
Nilambur	18420	30589	..	2889
Kozhikode	16834	14800	..	1032
Wynad	21574	6778	..	7649
Total	271601	152755	284,255 Cu.M & 46168 B.G. Units	84520 Charcoal & Bags 28420

Source: Forest Department.

VII. LIVE STOCK AND VETERINARY

TABLE 7.1

LIVE STOCK POPULATION

Category	Live Stock Population		
	1951	1956	1961
Cattle	2151522	2510376	2753165
Buffaloes	444368	487653	485089
Sheep	423513	97820	24241
Goats	423345	955570	1312262
Horses and Ponies	518	1690	408
Mules	14	2	31
Donkeys	689	1415	377
Pigs	117932	113711	122381
Total Livestock	3561901	4168237	4697954
Fowls	3854319	6462799	8708664
Ducks	263147	332085	387072
Others	..	161	10584
Total Poultry	4117466	6795045	9106320

Source: Live Stock Census, 1961.

VII. LIVESTOCK

TABLE

LIVE STOCK POPULATION 1961—

District	Cattle	Buffaloes	Sheep
Trivandrum	126815	44261	1543
Quilon	325733	28363	5841
Alleppey	299257	15012	2138
Kottayam	359059	15195	1782
Ernakulam	303236	21032	315
Trichur	207681	67825	335
Palghat	332291	178736	9935
Kozhikode	416060	68179	2157
Cannanore	383033	46486	195
Kerala	2753165	485089	24241

Source: Live Stock Census 1961.

AND VETERINARY

7.2

DISTRICT-WISE

Goats	Horse, Ponies etc.	Pigs	Total Livestock	Poultry
182460	46	8048	363173	767694
149645	5	1086	510673	813666
88368	4	110	404889	1085647
137361	291	61656	575344	1213221
145223	11	45933	515750	1250097
127033	11	2498	405383	964568
174065	353	719	696099	907545
220890	69	1043	708398	1395511
87217	26	1288	518245	708371
1312262	816	122381	4697954	9106320

VII. LIVESTOCK

TABLE

VETERINARY

District	Hospitals		
	1960-61	1963-64	1964-65
Trivandrum	5	6	6
Quilon	7	8	8
Alleppey	6	6	6
Kottayam	5	8	8
Ernakulam	9	9	9
Trichur	7	8	8
Palghat	6	7	7
Kozhikode	3	5	5
Cannanore	1	2	2
Kerala	49	59	59

Source: Animal Husbandry Department.

- *Includes :— (i) Key Village centre,
(ii) Dry Stock Farm,
(iii) Poultry Farm etc.

AND VETERINARY.

7.3

INSTITUTION

Dispensaries			Others *		
1960-61	1963-64	1964-65	1960-61	1963-64	1964-65
7	25	25		9	15
7	21	21		7	8
6	19	20		8	9
8	15	15	Not	12	14
12	23	22	available	9	10
17	23	23		16	28
8	14	16		19	18
11	16	17		14	13
11	18	19		9	15
87	174	178		103	130

VII. LIVE STOCK & VETERINARY

TABLE 7.4

LIVE STOCK SLAUGHTERED IN THE LICENCED SLAUGHTER HOUSES IN MUNICIPALITIES 1964.

Months	Cows	Bulls and Bullocks	Calves	Buffaloes	Sheep and Goats	Pigs	Total
January	977	2902	180	302	16256	136	20753
February	1111	2643	141	345	14455	74	18769
March	1081	2654	120	400	15439	119	19813
April	1108	2387	165	379	16588	109	20736
May	1220	2510	253	375	16653	144	21155
June	1130	2505	198	307	15520	95	19755
July	1250	2628	186	326	16551	113	20954
August	1391	2649	215	324	17939	122	22640
September	1173	2456	222	247	16429	104	20631
October	1299	2476	185	349	15284	204	19797
November	1278	2646	192	345	15201	104	19766
December	1345	2908	191	404	15910	120	20878
Total	14363	31364	2248	4103	192225	1444	245647

Source: Municipalities.

VII. LIVE STOCK AND VETERINARY

TABLE 7.5

PER CAPITA AVAILABILITY OF MILK

District	Total Milk produced during 1961 (ozs. lakhs)	1961 population (in lakhs)	Daily Per capita availability of milk (in ozs.)
Trivandrum	10648	17.45	1.67
Quilon	10699	19.41	1.51
Alleppey	10873	18.11	1.64
Kottayam	15330	17.33	2.42
Ernakulam	10051	18.60	1.48
Trichur	10625	16.40	1.78
Palghat	16564	17.77	2.55
Kozhikode	14499	26.17	1.52
Cannanore	13160	17.80	2.03
Kerala	112449	169.04	1.82

Source: Live Stock Census 1961.

VIL FISHERIES
TABLE 3.1

MAJOR FISH LANDINGS

Name of Fish	1963-64		1964-65	
	Weight (ML tonnes)	Value (Rs. in '000)	Weight (ML tonnes)	Value (Rs. in '000)
1 Oil Sardine	24325	4930	246986	28873
2 Prawns	22734	9026	21344	8979
3 Mackerel	17138	4870	11887	3600
4 Silver Bellies	4004	749	8437	2504
5 Soles	4007	705	5818	694
6 Ribbon Fish	1212	261	1421	272
7 Cat Fish	1094	417	842	359
8 Other Sardine	4493	1157	4219	1157
9 White Bait	3862	801	5327	931
10 Seer	2184	907	1742	891

11	Sharks and dog Fish	4312	1587	2849	1045
12	Anchovis	480	216	525	290
13	Lactarius	1359	509	962	424
14	Horse Mackerel	564	173	5566	1125
15	Skate and rays	2023	486	923	313
16	Sciaenidae	1370	252	620	142
17	Pomfret	822	542	141	84
18	Sabre Fish	451	211	370	167
19	Caranx Hippos	194	133	61	59
20	Pellona	667	139	1098	201
21	Chupeioides lile	542	91	386	125
22	Tunny	1755	832	1559	742
23	Chorinemus Spp	948	367	439	189
24	Miscellaneous	66825	11855	37978	9695
Total		167365	41216	359500	62801

Source: Fisheries Department (Rough Estimates).

VIII. FISHERIES

TABLE 8.2

INLAND FISHING

Name of Fish	1963-64		1964-65	
	Weight (M. tonnes)	Value (Rs. in '000)	Weight (M. tonnes)	Value (Rs. in '000)
1 Prawns	1184	638	1475	879
2 Mulletts	366	358	578	458
3 Etroplus	506	415	677	476
4 Cat Fish	17	119	514	300
5 Barbus	89	145	177	163
6 Tilapia	16	11	11	8
7 Wallagonia	99	94	139	120
8 Chanos	126	132	78	89
9 Miscellaneous	926	558	2234	1223
Total	3329	2470	5883	3716

Source: Fisheries Department (Rough estimates).

IX. POWER

TABLE 9.1

GENERATION OF ELECTRICITY AND PURCHASE

Item	Unit	1960-61	1963-64	1964-65
1 Electricity generated in the State	M.K.W.H.	581.81	762.88	795.11
2 Purchased from Madras	"	50.34	68.38	97.19
3 No. of Centres electrified in the State	Number	1547	1826	1875
4 No. of Consumers in the State (excluding consumers in street light)	"	174166	241198	280015
5 No. of Street lights	"	82645	93042	98265

Source: Kerala State Electricity Board, Trivandrum.

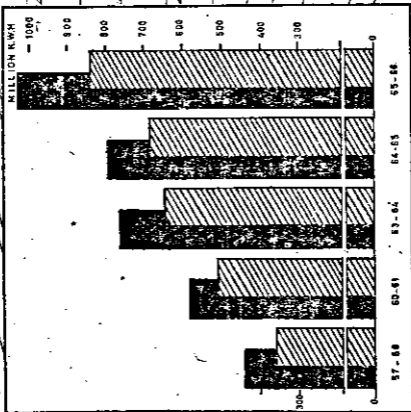
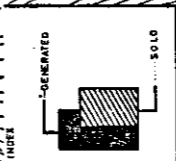
IX.
TABLE
CONSUMPTION OF

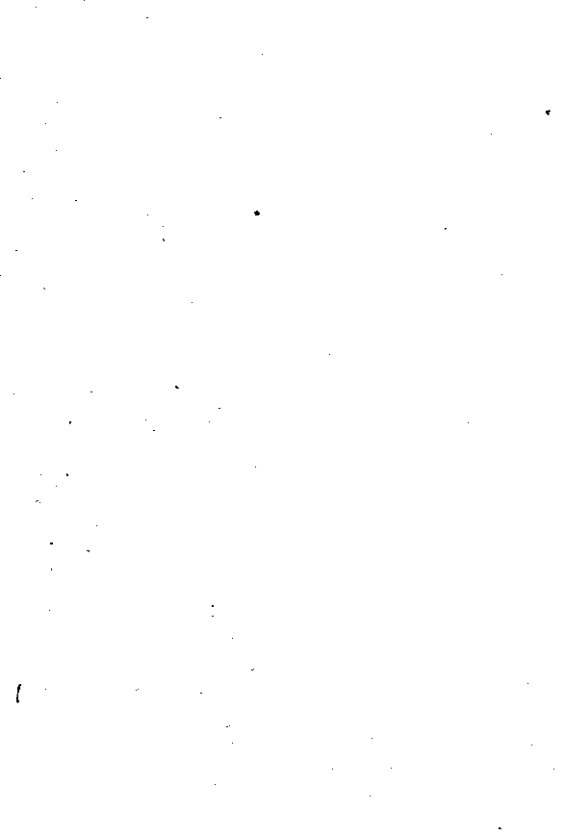
Class of Consumer

1. Domestic Heat and Small Power
 2. Domestic Light and Fans
 3. Commercial Heat and Small Power and
Commercial light and Small Power
 4. Industrial Power—High Voltage
 5. Industrial Power at low and Medium Voltage
 6. Public lighting
 7. Agriculture and irrigation dewatering
 8. Public Water Works and Sewage Pumps
 9. Bulk supplied to distributing licencees
- Total
-

Source: Kerala State Electricity Board, Trivandrum.

Electricity Generated And Sold





POWER

9.2

ELECTRICITY

(Rs. in lakhs)

1960-61		1963-64		1964-65	
Million K.W.H.	Revenue collected	Million K.W.H.	Revenue collected	Million K.W.H.	Revenue collected
4.3	5.7	7.9	12.9	9.4	16.04
34.9	113.4	49.1	186.6	61.5	204.21
1.4	2.9	2.5	5.5	2.9	6.15
340.5	82.9	458.6	135.9	468.6	155.07
40.4	35.8	53.0	54.5	63.9	69.26
6.6	18.7	8.0	24.6	8.5	29.19
18.3	11.9	14.8	10.6	22.1	15.71
7.2	3.6	6.5	3.7	6.5	3.41
52.0	34.8	46.1	14.2	39.2	14.77
505.6	309.7	646.5	448.5	682.6	513.81

IX. POWER

TABLE 9.3

NUMBER OF ELECTRICAL SUB DIVISIONS AND No. OF
CONSUMERS 1964-65

Electrical Division	District	No. of Consumers
Trivandrum	Trivandrum	45173
Quilon	Quilon	33849
Mavelikara	Alleppey	29422
Pallom	Kottayam	29844
Ernakulam	Ernakulam	26067
Trichur	Trichur	32458
Palghat	Palghat	27590
Kozhikode	Kozhikode	29059
Cannanore	Cannanore	25362
Generation Division, Chithirapuram	Kottayam	614
Generation Division, Peringalkuthu	Trichur	153
Generation Division, Kallarkutty	Kottayam	419
Transmission Division, Alwaye	Ernakulam	5
Total		280015

Source: Kerala State Electricity Board,
Trivandrum

X. MINERALS

TABLE 10.1

MINERAL PRODUCTION IN KERALA

Name of Mineral	1963-64		1964-65	
	Quantity (M. Tonnes)	Value ('000 Rs.)	Quantity (M. Tonnes)	Value ('000 Rs.)
(i) China Clay	21132	391	12582	573
(ii) Ilmenite	7346	318	3684	182
(iii) Quartz and Silica	10333	22	4700	10
(iv) Rutile	1901	1871	1772	1748
(v) Salt	700	16	800	11
Total	41412	2618	23533	2524

Source: Indian Bureau of Mines, Nagpur.

XI.
TABLE

DISTRIBUTION OF WORKING FACTORIES

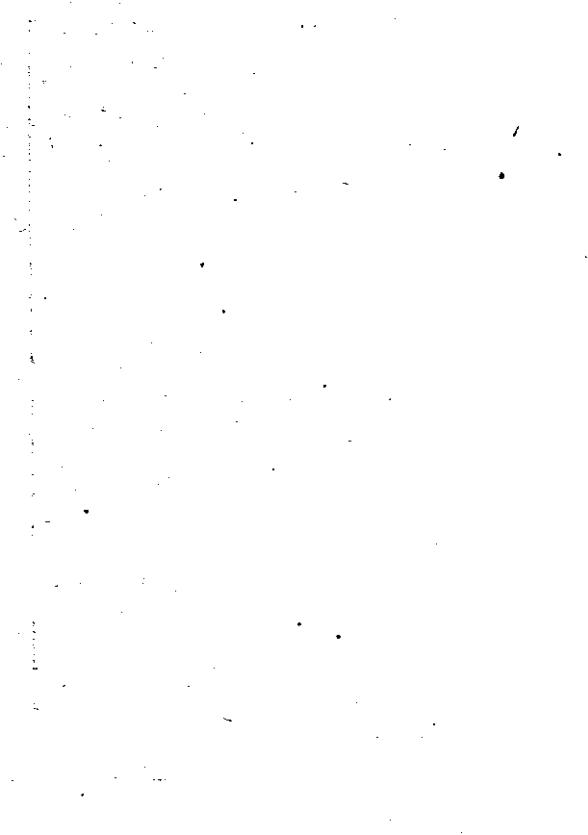
Industry	Trivan- dram	Qui- lon
(1)	(2)	(3)
1 Canning & Preservation of fruits & vegetables	..	1
2 Canning & Preservation of fish and other sea foods	..	1
3 Rice and Flour Mills
4 Sugar
5 Oil Mills	20	18
6 Tea Factories	5	9
7 Cashew Factories	5	167
8 Starch & other food articles except beverages	2	5
9 Beedi and Cigar
10 Cotton Textiles	9	1
11 Knitting	1	..
12 Coir	1	1
13 Other textiles

DISTRIBUTION OF FACTORIES - 1963

no. of factories



OIL MILLS
COTTON TEXTILES
CASHWAS
BRICKS & TILES
FIBRE WOODS (SPINDLES & SPINNING MACHINES)
PRINTING & BINDING
SAW MILLS
COIR
TEA
REPAIRING OF MOTOR VEHICLE
RICE & FLOUR MILL
RUBBER PRODUCTS
BEDDING & CIGAR
OTHER METAL INDUSTRIES
OTHER INDUSTRIES



INDUSTRIES

11.1

(REGISTERED) IN KERALA—DISTRICT-WISE 1963

Alle- ppey	Kotta- yam	Erna- kulam	Tri- chur	Pal- ghat	Kozhi- kode	Canna- nore	Kerala
(4)	(5)	(6)	(7)	(8)	(9)	(10)	(11)
..	3	..	1	..	5
1	..	6	1	..	2	..	11
..	..	3	32	67	4	4	110
1	1
96	17	39	55	4	8	9	266
..	83	1	..	4	17	6	125
6	..	3	9	..	3	4	197
6	..	2	1	..	9	3	28
..	..	4	7	31	7	24	73
..	..	6	5	1	19	214	255
..	1	1	2	8	13
121	5	14	13	..	155
..	..	1	1	..	1	..	3

Industry		Trivan- drum	Qui- lon
(1)		(2)	(3)
14	Umbrellas
15	Saw Mills	1	18
16	Plywood	..	1
17	Other Timber industries including splints and veneers	6	37
18	Printing and Binding	30	10
19	Paper Mills	..	1
20	Paper board, straw board and other paper products
21	Rubber and rubber products includ- ing tyre retreading	6	18
22	Artificial manures
23	Pharmaceuticals	2	..
24	Soap
25	Other chemicals including Matches	1	8
26	Bricks and Tiles	..	32
27	Glass
28	Pottery—China and Earthen-ware	..	3
29	Cement

Alle- ppey	Kotta- yam	Erna- kulam	Tri- chur	Pal- ghat	Kozhi- kode	Canna- nore	Kerala
(4)	(5)	(6)	(7)	(8)	(9)	(10)	(11)
3	..	1	3	..	11	..	18
1	10	20	23	10	64	26	173
..	5	1	2	1	..	4	14
8	12	20	29	35	26	16	189
15	29	38	24	7	24	12	189
..	1	2
1	2	3
3	36	13	15	4	16	2	113
1	2	5	1	..	9
1	1	2	6	3	2	..	17
..	..	3	1	..	3	..	7
5	1	8	8	1	2	1	35
3	3	17	101	10	20	7	193
..	..	1	1
..	2	1	3	1	10
..	1	1

Industry	Trivan- drum	Qui- lon
(1)	(2)	(3)
30 Cutlery
31 Bolts nuts, Nails etc.
32 Other Metal Products including basic metal industries	5	19
33 Agricultural implements	1	..
34 General and Jobbing Engineering	2	4
35 Other Machinery except electrical machinery	2	..
36 Electrical Machinery	2	2
37 Marine Engines building & repairing	..	2
38 Repair of Motor vehicles	15	5
39 Manufacture of bicycles	1	2
40 Other industries not classified above	10	10
Total	127	375

Source: Bureau of Economics and Statistics, Govern-

Alle- Kotta- Erna- Tri- Pal- Kozhi- Cann- Kerala
ppey yam kulam chur ghat kode nore

(4)	(5)	(6)	(7)	(8)	(9)	(10)	(11)
..	1	..	1	10	1	..	13
..	..	1	1	2
2	7	18	5	10	1	3	70
..	4	5
1	5	10	13	..	6	2	43
..	1	..	3	3	2	2	13
1	1	4	2	3	2	2	19
..	..	4	6
1	20	15	15	12	29	10	122
..	3
7	3	23	5	6	4	7	75
284	243	285	374	228	303	370	2587

ment of Kerala.

XL. INDUSTRIES

TABLE 11.2

INDUSTRIAL PRODUCTION IN SELECTED INDUSTRIES—1964.

Month	Sugar* (M.T.)	Cement (M.T.)	Commercial Plywood (*000 Sq. metres)	Vegetable oil products (vanaspathi) (Quintals)	Electricity M.K.W.H
January	2363	5478	201	2005	49,200
February	709	6574	188	1926	47,316
March	..	6501	170	1736	47,316
April	..	6452	147	1266	47,665
May	..	6515	146	1015	45,699
June	..	6807	130	1192	47,459
July	..	4924	199	1896	69,740
August	..	1254	170	1534	70,618
September	..	1602	273	1611	71,836
October	1934	4745	151	3103	80,606
November	3082	7191	163	1412	73,594
December	3621	3363	230	2279	75,929
Total	11709	61106	2168	20975	726,978

Source: Central Statistical Organisation, Government of India.

*Provisional

XII. LABOUR & EMPLOYMENT

TABLE—12.1

EMPLOYMENT IN STATE GOVERNMENT

Category			1965-66
Gazetted	Class	I	578
	Class	II	5867
Non-gazetted	Class	III	9093
	Class	IV	124276
	Class	V	32373
Work establishment & contingent staff:			
Contingent Establishment			9991
(i) Full time			5644
(ii) Part time			4347
Work Establishment staff			6089

Source:— Finance Department, Government of Kerala

Note:— The numbers are sanctioned posts.

Class I Officers are those in scales the minimum pay of which is Rs. 500 or above.

Class II Officers are those in scales the minimum pay of which is Rs. 200 and above.

Class III Officers are those in scales the minimum pay of which is Rs. 100 and above.

Class IV Officers are those in scales the minimum pay of which is Rs. 40 and above.

Class V Officers are those in scales the minimum pay of which is below Rs. 40.

XII. LABOUR AND EMPLOYMENT

TABLE 12.2

EMPLOYMENT IN REGISTERED FACTORIES—DISTRICT-WISE 1963

Industry	Trivan- drum	Qui- lon	Alle- ppey	Kotta- yam	Erna- kulam
1	2	3	4	5	6
1 Canning and Preservation of fruits and vegetables	..	87
2 Canning and Preservation of fish and other sea foods	..	16	16	..	530
3 Rice and flour mills	599	..	53
4 Sugar	100	162	758	74	267
5 Oil Mills	244	306	..	4401	9
6 Tea Factories	84
7 Starch and other food articles except beverages	32	267	162	..	98
8 Beedi and Cigar	815	999	1514
9 Cotton Textiles	5
10 Knitting

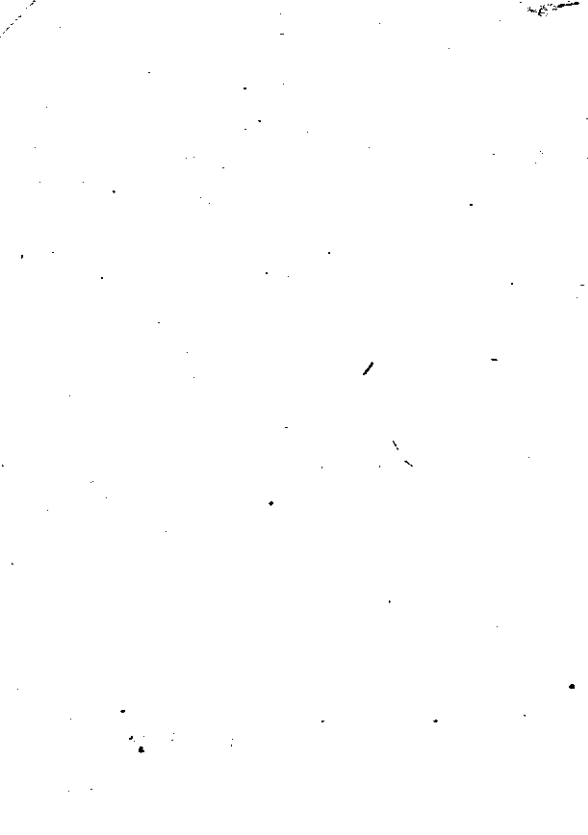
**EMPLOYMENT IN REGISTERED
COUNTRY FACTORIES, 1963**

74868

20000
10000
0000



CASHW
COTTON TEXTILES
BRICKS & TILES
COIR
TIMBER INDUSTRIES
ESSENTIALS
TEA
PRINTING & BINDING
SAW MILLS
REPAIRING OF
MOTOR VEHICLE
RUBBER
OTHER METAL
INDUSTRIES
BEEHIVE & COAG
DR. MILLS
RICE & FLOUR MILLS
OTHER
INDUSTRIES



1 2 3 4 5 6

11	Coir	16	20	4939	142	1714
12	Other textiles	44	..	907
13	Umbrellas	5	183	238
14	Saw Mills	..	106	..	353	23
15	Plywood
16	Other timber industries including luplnt and veneers	238	877	226	298	706
17	Cashew factories	2496	64373	6202	..	766
18	Paper Mills	..	616
19	Paper Board, Straw board and other paper products.	1021	383	24	630	728
20	Printing and binding	141
21	Rubber and rubber products in- cluding tyre retreading	233	431	214	1041	630
22	Artificial Manures	34	..	15	73	2151
23	Pharmaceuticals	33	15	84
24	Soap	1026
25	Other Chemicals including Matches	227	179	76	9	944
26	Bricks and Tiles	..	2070	61	77	977
27	Glass	306

	1	2	3	4	5	6
28	Pottery—China and Earthen-ware	..	274
29	Cement	384	..
30	Cutlery	50	..
31	Bolts, nuts, nails etc.	15
32	Other metal products including basic metal industries	244	953	30	40	814
33	Agricultural implements	9
34	General and Jobbing engineering	345	276	13	283	173
35	Other machinery except electrical machinery	14	7	..
36	Electrical Machinery	13	319	47	8	60
37	Marine Engine building and repairing	..	63	637
38	Repair of Motor vehicles	1091	153	69	505	326
39	Manufacture of bicycles	52	29
40	Other industries not classified above	514	87	78	104	1231
	Total	7748	73510	13752	8678	16722

Source: Bureau of Economics and Statistics, Government of Kerala.

TABLE 12.2—(Contd.)

Industry	Tri- Pal- Kozhi- Canna- Kerala		7	8	9	10	11
	chur	ghat kode nore					
1 Canning and Preservation of fruits and vegetables	291	..	50	428
2 Canning and Preservation of fish and other sea foods	12	747	103	..	40	..	677
3 Rice and flour mills	641	..	74	1555
4 Sugar	470	21	54	..	52	..	599
5 Oil Mills	..	237	835	..	166	..	1958
6 Tea Factories	6198
7 Starch and other food articles except beverages	19	..	1016	..	345	..	1925
8 Beedi and Cigar	296	915	185	..	587	..	2081
9 Cotton Textiles	2365	20	1940	..	7387	..	15040
10 Knitting	159	9	98	..	226	..	497
11 Coir	975	7806
12 Other textiles	1112	..	750	2769
13 Umbrellas	101	..	427	589

TABLE 12.2—(Contd.)

	7	8	9	10	11
14 Saw Mills	322	131	1818	607	3773
15 Plywood	257	54	..	830	1623
16 Other timber industries including spling and veneers	815	1737	891	597	6385
17 Cashew factories	2175	..	1328	1625	78965
18 Paper Mills	17	633
19 Paper Board, Straw board and other paper products	341	120	719	234	258
20 Printing and binding	129	4212
21 Rubber and rubber products including tyre retreading	236	80	274	9	3148
22 Artificial Manures	135	115	223	..	2267
23 Pharmaceuticals	20	..	244	..	639
24 Soap	1290
25 Other Chemicals including Matches	227	50	13	11	1736
26 Bricks and Tiles	5054	749	4357	624	13969
27 Glass	306
28 Pottery—China and Earthen- ware	115	20	246	37	692

TABLE 12.2—(Concl'd.)

	7	8	9	10	11
29 Cement	..	3	470	..	384
30 Cutlery	..	3	..	15	538
31 Bolts, nuts, nails etc.	..	3	18
32 Other metal products including basic metal industries	193	584	11	43	2912
33 Agricultural implements	..	220	229
34 General and Jobbing engineering	528	..	302	49	1969
35 Other machinery except electrical machinery	80	24	102	80	307
36 Electrical Machinery	30	66	65	59	667
37 Marine Engine building and repairing	700
38 Repair of Motor vehicles	349	181	594	160	3426
39 Manufacture of bicycles	81
40 Other industries and classified above	107	318	57	108	2604
Total	16456	6868	17794	14022	175859

XII. LABOUR AND

TABLE

EMPLOYMENT IN PLANTATIONS

(i) Tea

District	1962			
	Garden labour (Field)	Garden labour (Factory)	Outside labour (Field)	Outside labour (Factory)
Trivandrum	2026	239	15	..
Quilon	4324	348	662	52
Alleppey
Kottayam	52302	4213	3367	102
Ernakulam	195	15	18	..
Trichur	1090	57
Palghat	1339	112	141	24
Kozhikode	6929	591	1478	137
Cannanore	1828	121	437	30
Kerala	70033	5696	6118	345

Source:—Bureau of Economics and Statistics, Govern-

EMPLOYMENT

12.3

(DAILY AVERAGE)

1963					
Total	Garden labour (Field)	Garden labour (Factory)	Outside labour (Field)	Outside labour (Factory)	Total
2280	1982	197	66	..	2245
5386	3892	430	672	55	5049
..
59984	52588	4088	4036	132	60844
228	119	1	21	..	141
1147	1160	57	1217
1616	1321	106	102	24	1553
9135	7196	592	1894	149	9831
2416	1819	136	484	32	2471
82192	70077	5607	7275	392	83351

ment of Kerala

XII. LABOUR AND

TABLE

AVERAGE DAILY EMPLOYMENT IN

(ii) Coffee

District	1962-63	
	Garden labour (Perma- nent)	Outside labour (Perma- nent)
Trivandrum
Quilon	67	..
Alleppey
Kottayam	1162	65
Ernakulam	143	6
Trichur
Palghat	4201	255
Kozhikode	6104	9565
Cannanore	606	1232
Kerala	12283	11123

Source:—Bureau of Economics and Statistics,

EMPLOYMENT**12.3****PLANTATIONS IN KERALA**

1963-64					
Outside labour (Temporary)	Total	Garden labour (Permanent)	Outside labour (Permanent)	Outside labour (Temporary)	Total
..	1	..	1
199	266	36	1	106	143
..
142	1369	1167	65	143	1375
15	164	143	6	15	164
..
129	4585	4876	266	150	5292
1565	17234	6474	10139	1565	18178
219	2057	641	1304	230	2175
2269	25675	19337	11782	2209	27328

XII LABOUR AND TABLE

AVERAGE DAILY EMPLOYMENT IN
(iii) Rubber

District	1963	
	Garden labour (Perma- nent)	Outside labour (Perma- nent)
1. Trivandrum	1828	1401
2. Quilon	13297	6357
3. Alleppey	1350	646
4. Kottayam	13681	4339
5. Ernakulam	5673	1799
6. Trichur	3428	1722
7. Palghat	2384	974
8. Kozhikode	6780	2773
9. Cannanore	4242	1735
Kerala	52668	21746

Source:—Bureau of Economics and Statistics,

EMPLOYMENT**12.3****PLANTATIONS IN KERALA**

1964

Outside labour (Temporary)	Total	Garden labour (Permanent)	Outside labour (Permanent)	Outside labour (Temporary)	Total
2260	5489	1883	1443	2328	5654
6482	26136	13430	6421	6547	26398
665	2661	1364	653	672	2689
6769	24789	13818	4382	6837	25037
2804	10276	5730	1817	2832	10379
5166	10316	3497	1756	5269	10522
1511	4869	2479	1013	1572	5064
4296	13849	6916	2829	4382	14127
2689	8666	4369	1787	2770	8926
32642	107051	53486	22101	33209	108796

Government of Kerala.

XII. LABOUR AND EMPLOYMENT**TABLE 12.4**

**AVERAGE DAILY EARNINGS OF FACTORY WORKERS IN
SELECTED INDUSTRIES (PERSONS DRAWING LESS
THAN RS. 400 A MONTH)—1963**

Industry	Average daily earning (Rs.)
1. Rice and Flour Mills	2.10
2. Sugar	7.19
3. Oil Mills	2.56
4. Tea factories	2.80
5. Cashew factories	1.46
6. Beedi and Cigar	2.92
7. Cotton Textiles (Mills)	4.21
8. Coir	3.30
9. Thread mill	6.18
10. Saw Mills	3.87
11. Plywood	3.88
12. Paper Mills	5.18
13. Printing and Binding	4.86
14. Rubber Products	3.50
15. Pharmaccuticals	3.84
16. Soap	8.42
17. Bricks and tiles	3.25
18. General & Jobbing Engineering	6.11
19. Repair of Motor Vehicles	4.09

Source:—Bureau of Economics & Statistics,
Government of Kerala.

XII. LABOUR AND EMPLOYMENT

TABLE 12.5

AGRICULTURAL WAGES (DAILY AVERAGE)
(in Rs.)

District	Carpenter		Mason		Field labour (Men)	
	1963	1964	1963	1964	1963	1964
Trivandrum	3.34	3.34	3.84	3.84	2.44	2.52
Quilon	3.31	3.85	3.33	3.59	2.02	2.27
Alleppey	3.79	4.23	3.98	4.31	2.31	2.44
Kottayam	4.11	4.58	3.86	4.27	1.94	2.12
Ernakulam	4.00	4.95	4.23	4.64	3.11	3.47
Trichur	4.27	4.66	4.72	4.91	2.79	2.91
Palghat	3.67	3.60	3.77	3.67	2.17	2.28
Kozhikode	4.15	4.37	4.21	4.53	2.45	2.59
Cannanore	4.01	4.14	3.76	3.89	2.92	3.13
Kerala	3.85	4.19	3.97	4.18	2.46	2.64

Source: Bureau of Economics and Statistics, Government of Kerala.

XII. LABOUR AND
TABLE
INDUSTRIAL DISPUTES IN KERALA

Industry	1961		1962	
	A	B	A	B
Plantations	59	101845	15	8533
Textiles	18	29853	11	143593
Coir	21	16781	13	17720
Saw Mills	39	8480	7	1901
Matches	3	622
Bricks & Tiles	52	154359	95	214570
Cashew	22	45762	140	1606652
Miscellaneous	113	85351	40	120501
Total	324	442431	324	2114092

A—No. of disputes

B—No. of Mandays lost

EMPLOYMENT

12.6

RESULTING IN WORK STOPPAGES

1963		1964		1965 January to June	
A	B	A	B	A	B
23	62604	47	297562	15	3085
18	23051	14	108244	3	4635
6	300
13	3276	10	22053	1	290
7	3789	4	1263	1	864
19	13560	43	63885	16	27320
14	39516	11	55739	4	5964
33	25226	85	321615	32	25643
133	171322	214	870361	72	67801

Source:—Bureau of Economics and Statistics,
Government of Kerala

XII LABOUR AND EMPLOYMENT

TABLE 12.7

TRADE UNION MOVEMENT

Year	1957-58	1960-61	1963-64
1 Total number of Trade Unions/ Federations on the register	1219	1828	1639
Employees	1213	1815	1626
Employers	3	8	8
Federations	3	5	5
2 Total number of Unions submitted returns	829	845	669
Employee's Unions	823	837	660
Employer's Unions	3	5	8
Federations	3	3	1
3 Total number of members in Unions submitted returns	354911	256179	197111
Employees	1875	748	917
Employers			
Federations (number of unions affiliated)	27	23	3

Source: Bureau of Economics and Statistics, Government of Kerala.

XII. LABOUR AND EMPLOYMENT

TABLE 12.8

APPLICANTS ON THE LIVE REGISTER OF EMPLOYMENT
EXCHANGE (CATEGORY-WISE)

Occupation category	No. of persons as on		
	31st Dec. 1961	31st Dec. 1964	30th June 1965
1 Professional, Technical & related workers	10097	7002	12410
2 Administrative, Executive and Managerial workers	191	93	143
3 Clerical and related workers	10543	1643	4575
4 Sales workers	38	8	15
5 Farmers, fishermen, hunters, loggers and related workers	1358	543	839
6 Miners, Quarrymen & related workers	93	11	14
7 Workers in Transport & Communication occupations	3019	2924	4188
8 Craftsmen, production process workers & labourers not elsewhere classified	19590	6893	9512
9 Service, Sport & recreation workers	8256	3443	4485
10 Workers not classifiable by occupation	87625	117963	104711
Total	140809	140523	140892

Source: Directorate of Employment Services, Trivandrum.

XII. LABOUR AND EMPLOYMENT

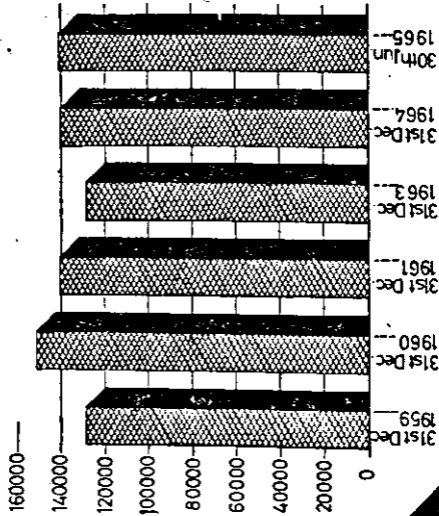
TABLE 12.9

CANDIDATES ON LIVE REGISTER OF EMPLOYMENT EXCHANGES (DISTRICT-WISE)

Name of Employment Exchange	Number of candidates on live register as on											
	31st Dec. 1959	31st Dec. 1960	31st Dec. 1961	31st Dec. 1963	31st Dec. 1964	30th June 1965						
Trivandrum	21445	31541	31578	30247	36980	38562						
Quilon	15634	21335	16779	17176	17830	17307						
Alleppey	12156	14370	14783	12642	12501	12736						
Kottayam	9386	10861	11978	10520	12752	12587						
Ernakulam	40116	35558	28867	19479	20381	19018						
Trichur	7872	10723	8568	9540	9994	10307						
Palghat	5765	6445	6814	6994	6609	7124						
Kozhikode	10173	12025	19377	14824	15828	14960						
Cannanore	6092	8611	8065	7122	7648	8291						
Kerala	128639	151469	140809	128544	140523	140892						

Source: Directorate of National Employment Service.

NO. OF CANDIDATES ON LIVE REGISTER



WORKING
OF
EMPLOYMENT
EXCHANGES



XIII. POLICE AND CRIMES

TABLE 13.1

SANCTIONED STRENGTH AND COST OF CIVIL POLICE

Year	Number of										Total	Cost (Rs. in lakhs)			
	Inspector General & Deputy Inspector General	Superintendents	Asst. Superintendents	Deputy Superintendents	Inspectors	Sub-Inspectors	Sergants	Asst. Sub-Inspectors	Head Constables						
								Foot	Water	Mounted	Foot	Water	Mounted		
1963	4	15	4	45	99	378	51	1490	..	3	9969	..	36	12094	336.33
1964	4	15	5	33	96	382	61	1464	..	3	9960	..	36	12059	325.02

Note:— Excludes the strength of the Malabar Special Police, Special Armed Police and Radio Unit etc.

Source:— Inspectorate General of Police, Trivandrum.

XIII. POLICE AND CRIMES**TABLE 13.2****INCIDENCE OF SERIOUS CRIMES**

Nature of Crime	Number of crimes			
	1961	1962	1963	1964
Murder	261	221	190	223
Dacoity	9	6	5	21
Robbery	66	61	45	26
House breaking and theft	2116	1826	1869	2116
Cattle theft	103	136	123	106
Theft (Ordinary)	2806	2879	1951	2079
Total	5361	5129	4183	4571

Source:—Police Department, Kerala.

XIII. POLICE AND CRIMES

TABLE 13.3

NUMBER OF ROAD ACCIDENTS IN WHICH MOTOR VEHICLES WERE INVOLVED (1964-65)

Sl. No.	District	No. of Road Accidents	No. of Vehicles involved	No. of persons injured	No. of persons killed
1	Trivandrum City	135	135	101	5
2	Trivandrum Rural	146	146	175	12
3	Quilon District	253	253	255	28
4	Alleppey	228	228	249	33
5	Kottayam	303	303	400	34
6	Ernakulam	394	394	580	71
7	Trichur	146	146	154	26
8	Palghat	233	233	217	27
9	Kozhikode	406	406	364	50
10	Cannanore	150	150	190	29
	Total	2394	2394	2685	325

Source: Inspector General of Police, Trivandrum.

XIV. REGISTRATION

TABLE 14.1

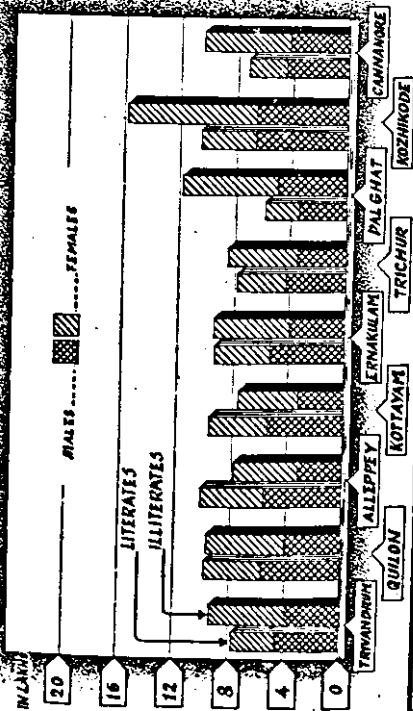
NUMBER OF DOCUMENTS REGISTERED AND VALUE OF DOCUMENTS.

Nature of Documents	Number of Documents Registered		Value of Documents Registered (Rs. in crores)			
	1960-61	1963-64	1964-65	1960-61	1963-64	1964-65
Mortgages	177303	177974	184312	22.44	21.57	28.92
Sale deeds	203516	199492	200969	27.17	21.30	25.20
Wills	3864	4620	2094
Money Bonds	12679	12598	12907	0.87	1.11	1.16
Others	302443	273252	287546	32.10	27.30	28.56
Total	699805	667936	687828	82.58	71.28	83.84

Source: Registration Department, Kerala.



LITERACY - DISTRICT WISE (1961 Census)



XV. EDUCATION

TABLE 15.1

LITERACY—1961

District	Male	Percentage to total population		Percentage to total population
		Male	Female	
Trivandrum	4.64	53.3	3.27	37.3
Quilon	5.62	57.8	4.18	43.2
Alleppey	5.70	63.8	4.60	50.1
Kottayam	5.51	62.4	4.29	50.5
Ernakulam	5.38	57.8	4.02	43.3
Trichur	4.33	55.2	3.62	42.3
Palghat	3.59	42.1	2.46	26.6
Kozhikode	6.65	51.1	3.98	30.2
Cannanore	4.54	52.0	2.81	31.0
State	45.96	55.0	33.23	38.9
				79.19
				46.9

Source: Census Tables, 1961.

**XV EDU-
TABLE**
NO. OF INSTITUTIONS, SCHOLARS AND TEACHERS

Type of Institution	Number of		
	Institutions		
	1960-61	1961-62	1962-63
I. University Departments	1	1	1
II. Colleges for General Education	46	47	48
III. <i>Colleges for Professional Education</i>			
Teachers' Training	18	19	19
Engineering	4	6	6
Medicine & Ayurveda	3	3	4
Veterinary Science	1	1	1
Agriculture	1	1	1
Law	2	2	2
Commerce	1	1	1
Physical Education	2	2	2
IV. <i>Colleges for Special education</i>			
Oriental studies	8	8	8

Source:— (i) Bureau of Economics and Statistics, Trivandrum

CATION

15.2

IN KERALA STATE

(Higher Education)

Scholars			Teachers		
1960-61	1961-62	1962-63	1960-61	1961-62	1962-63
139	224	311	32	39	55
37224	41739	46133	2170	2336	2453
2009	2096	3109	138	153	156
1888	2765	3198	145	192	226
1696	1669	2238	212	273	319
359	298	259	36	38	35
215	217	219	31	36	37
437	409	486	11	12	13
326	314	314	12	12	12
183	184	184	10	10	10
549	706	720	64	60	56

(ii) Department of Statistics, University of Kerala, Trivandrum.

**XV. EDU-
TABLE**

No. of Institutions, Scholars and

Type of School	Number of		
	Schools		
	1960-61	1961-62	1962-63
<i>I. Schools for General Education</i>			
Nursery & Primary	7014	7192	7030
Middle	1933	1967	2285
Secondary	882	929	1015
<i>II. Schools for Professional Education</i>			
Engineering & Technology	22	24	30
Teachers' Training	80	82	83
Technical, Ind. and Arts and Crafts	88	92	87
<i>III. Schools for Special Education</i>			
Music & Dancing and Other Fine Arts	11	11	11
Physically Handicapped	7	7	6
Reformatory	2	2	3

Source:— (i) Bureau of Economics & Statistics,
Trivandrum

CATION

15.3

TEACHERS IN KERALA STATE

(School Education)

Scholars			Teachers		
1960-61	1961-62	1962-63	1960-61	1961-62	1962-63
1805550	1843854	1880686	46648	49514	48501
770690	841496	939243	28699	31250	34374
690452	776720	811453	26854	30393	32930
7037	7526	7550	542	577	589
5759	7480	8521	395	439	454
3310	3887	4543	280	330	329
783	820	845	101	108	111
346	378	385	50	52	59
594	892	875	26	26	27

(ii) Director of Public Instruction,
Trivandrum

XV. EDUCATION

TABLE 15.4

DIRECT EXPENDITURE BY SOURCE ON EDUCATIONAL INSTITUTIONS IN KERALA STATE

(Rs. in lakhs)

Type of Institution	Direct Expenditure from					
	1	2	3	4	5	6
		Govern- ment funds	Local funds	Fees	Other sources	Total
		1960-61				
I University Departments		36.91	..	19.96	11.12	67.99
II Colleges for General Education		54.36	..	60.52	1.54	116.42
III Colleges for Professional Education		28.45	..	15.33	1.04	44.82
IV Colleges for Special Education		0.96	..	0.03	0.79	1.78
V Schools for General Education		1229.37	0.06	76.31	18.31	1324.05
VI Schools for Professional Education		24.04	..	8.11	1.67	33.82
VII Schools for Special Education		4.16	0.00	0.23	0.33	4.72

Direct Expenditure from

Type of Institution	Government funds	Local funds	Fees	Other sources	Total
1962-63					
I University Departments	23.56	..	23.09	..	46.65
II Colleges for General Education	59.72	..	71.25	4.29	135.26
III Colleges for Professional Education	46.13	..	23.86	0.87	70.86
IV Colleges for Special Education	0.54	..	0.03	0.57	1.14
V Schools for General Education	1351.47	..	89.42	37.89	1478.78
VI Schools for Professional Education	30.74	..	12.20	2.12	45.06
VII Schools for Special Education	5.18	0.00	0.01	0.04	5.23

Source: (i) Bureau of Economics and Statistics, Trivandrum.

(ii) Director of Public Instruction, Trivandrum.

(iii) Department of Statistics, University of Kerala, Trivandrum.

XV.
TABLE
NUMBER OF HARIJAN SCHOLARS IN

Type of School	Number of Harijan		
	1960-61		
	Boys	Girls	Total
I. Schools for			
Nursery			
Primary	112091	94051	206142
Middle	39659	28931	68590
Secondary	33837	20290	54127
II. Schools for			
Engineering & Technology	250	6	256
Teachers' Training	338	171	509
Technical, Ind. and Arts and Crafts	298	372	670
III. Schools for			
Music & Dancing and other fine Arts	17	15	32
Others	121	24	145

Source: i. Bureau of Economics and Statistics, Trivandrum.

EDUCATION

15.5

SCHOOLS IN KERALA STATE

Scholars					
1961-62			1962-63		
Boys	Girls	Total	Boys	Girls	Total
General Education					
113982	97145	211127	115321	93699	214020
45396	33851	79247	47635	36095	83730
36131	24436	60567	37096	25065	62161
Professional Education					
237	11	248	261	16	277
478	261	739	461	259	720
305	323	628	194	184	378
Special Education					
21	19	40	25	16	41
380	243	623	78	45	123

ii. Director of Public Instruction, Trivandrum.

XV. EDUCATION

TABLE 15.6

STANDARD-WISE DISTRIBUTION OF SCHOLARS
IN SCHOOLS (1964-65)

Standard	No. of Scholars
I	682607
II	617114
III	568691
IV	516119
Total (I-IV)	2384531
V	398536
VI	338132
VII	286017
Total (V-VII)	1022685
VIII	258380
IX	212017
X	131669
Total (VIII-X)	602066
Grand Total	4009282

Source: Director of Public Instruction, Trivandrum.

XVI. LOCAL BODIES

TABLE 16.1

INCOME OF MUNICIPALITIES IN THE KERALA STATE FOR THE YEAR
1963-64 (Rs. in thousands)

Name of Municipality	Municipal Rates & Taxes	Other receipts	Total Income	Opening Balance	Grand Total
1 Neyyattinkara	60	129	189	38	227
2 Attingal	55	122	177	18	195
3 Quilon	762	437	1199	162	1361
4 Kayamkulam	155	122	277	74	351
5 Mavelikara	123	55	178	32	210
6 Thiruvalla	100	71	171	101	272
7 Alleppey	919	387	1306	241	1547

TABLE 16.1—(contd.)

Name of Municipality	Municipal Rates & Taxes	Other receipts	Total Income	Opening Balance	Grand Total
8 Shertallaj	110	73	183	51	234
9 Kottayam	575	484	1059	271	1330
10 Changanacherry	195	162	357	200	557
11 Vaikom	102	39	141	27	168
12 Palai	94	99	193	123	316
13 Moovattupuzha	101	78	179	79	258
14 Mattancherry	926	524	1450	377	1827
15 Fort Cochin	347	734	1081	197	1278
16 Ernakulam	1384	875	2259	620	2879

17	Perumbavoor	133	135	268	43	311
18	Alwaye	203	222	425	78	503
19	Parur	128	116	244	107	351
20	Irinjalakuda	157	182	339	119	458
21	Trichur	965	1026	1991	653	2644
22	Kunnamkulam	119	172	291	96	387
23	Chittur- Thathamangalam	133	115	248	70	318
24	Palghat	900	405	1305	212	1517
25	Badagara	194	102	296	183	479
26	Tellicherry	302	613	915	265	1180
27	Cannanore	524	519	1043	264	1307
	State Total	9766	7998	17764	4701	22465

Source: Municipalities.

XVI. LOCAL BODIES
TABLE 16.2

EXPENDITURE OF MUNICIPALITIES FOR THE PERIOD 1963-64
(Rs. in thousands)

Name of Municipality	Current Capital Expendi- ture	Expendi- ture and other	Total Expendi- ture	Closing Balance	Grand Total
1	2	3	4	5	6
1 Neyyattinkara	90	67	157	70	227
2 Attingal	88	53	141	55	196
3 Quilon	697	451	1148	214	1362
4 Kayamkulam	138	83	221	130	351
5 Mavelikara	55	94	149	61	210
6 Thiruvalla	53	84	137	134	271

7	Alleppey	811	345	1156	391	1547
8	Sherattalai	125	61	186	48	234
9	Kottayam	520	467	987	343	1330
10	Changanacherry	217	163	380	177	557
11	Vaikom	120	34	154	14	168
12	Palai	85	79	164	152	316
13	Moovattupuzha	106	103	209	49	258
14	Mattancherry	805	746	1551	276	1827
15	Fort Cochin	354	325	679	598	1277
16	Ernakulam	1244	628	1872	1008	2880
17	Perumbavoor	127	131	258	52	310
18	Alwaye	197	155	352	152	504
19	Parur	130	116	246	103	349
20	Irinjalakuda	152	164	316	142	458

	1	2	3	4	6
21 Trichur	1106	811	1917	729	2646
22 Kunnankulam	168	120	288	98	386
23 Chittur- Thathamangalam	157	143	300	18	318
24 Palghat	762	422	1184	333	1517
25 Badagara	173	181	354	124	478
26 Tellicherry	582	502	1084	96	1180
27 Cannanore	430	394	824	484	1308
Grand Total	9492	6922	16414	6051	22465

Source: Municipalities.

XVI. LOCAL BODIES

TABLE 16.3

INCOME OF CORPORATIONS FOR THE PERIOD 1963-64
(Rs. in thousands)

Name of Corporations	Municipal Rates & Taxes	Other receipts	Total Income	Opening Balance	Grand Total
Trivandrum	2138	1807	3945	939	4884
Kozhikode	2135	3199	5334	325	5659
Total	4273	5006	9279	1264	10543

Source: Corporations.

XVI. LOCAL BODIES

TABLE 16.4

EXPENDITURE OF CORPORATIONS FOR THE PERIOD 1963-64
(Rs. in thousands)

Name of Corporations	Current Expenditure	Capital Expenditure and Others	Total Expenditure	Closing Balance	Grand Total
Trivandrum	2218	1165	3383	1501	4884
Kozhikode	3849	1060	4909	750	5659
Total	6067	2225	8292	2251	10543

Source: Corporations.

XVIII TRANSPORT AND COMMUNICATIONS

TABLE 17.1

ROADS

Departments	Length of roads (as on 31-3-1964)				Miles (K.Ms.)
	Cement concrete	Black Top	Water bound Macadam	Lower type	
Public Works	120	2557	3521	2274	8472
Municipalities	29	196	190	646	1061
Forest	112	860	972
Electricity	..	82	23	30	135
Total (Miles)	149	2835	3846	3810	10640
(K.M.)	240	4562	6190	6131	17123

Source: Bureau of Economics and Statistics Government of Kerala

XVII TRANSPORT AND COMMUNICATIONS

TABLE 17.2

RAILWAYS

Type of Gauge	Length of Railway line (1964-65)	
	Miles	Kilometres
Broad Gauge	344	553
Metre Gauge	208	335
Mixed Gauge	Nil.	Nil.
Total	552	888

Source: Divisional Superintendent of Railways, Madurai and Olavakode.

XVII. TRANSPORT AND COMMUNICATIONS

TABLE 17.8

MOTOR VEHICLES

Type of Vehicle	1960-61	1963-64	1964-65
Motor Cycles	2096	3877	4883
Private Cars and Jeeps	11611	19366	21014
Goods Vehicles	5128	8173	8900
Taxi Cars	1485	3619	4260
Buses	3511	4392	4379
Others	681	1016	604
Total	24512	40443	44040

Source: Transport Commissioner, Trivandrum.

XVII. TRANSPORT AND COMMUNICATIONS

TABLE 17.4

POSTS AND TELEGRAPHS

Particulars	1962-63*	1963-64
Number of Post Offices]	3158	3287
(i) Urban	1314	1336
(ii) Rural	2844	2951
Number of Telegraph offices	412	452
Number of Telephone connections	18424	21074
Number of Telephone exchanges	96	118
Number of Public Call Offices:		
(i) Trunk Call Offices	126	125
(ii) Local Call Offices	335	390

Source: Post Master General, Kerala.

*Revised data

XVII. TRANSPORT AND COMMUNICATIONS**TABLE 17.5****STATE TRANSPORT (PASSENGER SERVICE)**

Particulars	1960-61	1962-63	1963-64
Number of Routes	356	448	529
Route Distance (Kms.)	9981	13891	16792
Number of Buses	690	839	850
Total traffic distance run by buses (gross in lakhs K.M.)	400	536	570
Total Passengers carried (in lakhs)	967	1337	1205
Total Earnings realised (Rs. in lakhs)	257	434	477
Number of bus schedules in operation	N.A.	614	652

Source: State Transport Department.

**XVIII. TRADE
TABLE**

EXPORT OF IMPORTANT COMMODITIES

Commodity	Unit	Coastal Quantity
1	2	3
1 Betal Nuts	M.T.	15681.38
2 Bricks and Tiles	No. in lakhs	200.47
3 Cardamom	M.T.	5.20
4 Cashew Kernels	„	74.20
5 Cashew shell liquid	'000 Litres	..
6 Chemicals	Value	..
7 Cocoanuts	No. in lakhs	844.63
8 Coffee	M.T.	119.72
9 Coir and Coir Products	„	1702.22
10 Copra	„	24076.02
11 Cotton piece goods	'000 Metres	1230.99
12 Cotton twist & yarn etc.	M.T.	1410.83

AND COMMERCE

18.1

(1963-64) FROM THE PORTS OF KERALA
(Value Rs. in lakhs)

Foreign		Total		
Value	Quantity	Value	Quantity	Value
4	5	6	7	8
802.29	15681.38	802.29
40.04	33.20	6.64	233.67	46.68
0.59	440.00	69.45	445.20	70.04
3.50	51703.56	2198.38	51777.76	2201.88
..	10457.77	142.47	10457.77	142.47
152.82	..	3.61	..	156.43
184.56	0.02	0.05	844.65	184.56
4.19	11912.52	445.27	12032.24	449.46
204.23	75871.49	1117.83	77573.71	1322.06
486.97	24076.02	486.97
12.37	19742.52	179.86	20973.51	192.23
95.72	4808.63	64.46	6084.78	160.18

XVIII TRADE

1	2	3
13 Fish and Prawns etc.	M.T.	48.90
14 Ginger	"	4426.30
15 Manioc meal	"	9273.20
16 Metals and Minerals etc.	"	4942.30
17 Coconut Oil	'000 Litres	10397.61
18 Lemongrass Oil	"	..
19 Paper and Paste board	M.T.	1737.50
20 Pepper	"	5509.31
21 Rubber Raw	"	24731.16
22 Rubber manufactures	"	2999.24
23 Soap	"	1883.85
24 Tea	"	4529.46
25 Turmeric	"	74.80
26 Wood	Value	..
27 Others	"	..
Total	Value	..

Source: Bureau of Economics and Statistics, Govern-

AND COMMERCE—(Concl'd)

4	5	6	7	8
1.34	7972.80	379.50	8021.70	380.84
128.86	3206.22	99.64	7632.52	228.50
27.31	21044.56	44.65	30317.76	71.96
168.60	26164.40	23.49	31106.70	192.09
283.92	10397.61	283.92
..	864.61	128.64	864.61	128.64
163.25	1737.50	163.25
221.37	16898.63	537.15	22407.93	758.52
927.30	24731.16	927.30
99.97	41.40	2.15	3040.64	102.12
119.71	16.80	0.80	1900.65	120.51
231.16	39975.20	2106.53	44504.65	2337.69
1.28	1531.94	27.11	1606.74	28.39
145.33	..	199.02	..	344.35
176.95	..	130.44	..	307.39
4683.63	..	7907.09	..	12590.72

ment of Kerala.

XVIII. TRADE

TABLE

IMPORTS INTO THE PORTS

Commodity	Unit	Coastal
		Quantity
1	2	3
1 Building and Engineering Materials	Value	--
2 Chemicals	Value	--
3 Coal, Coke and Patent fuel	'000 M.T.	351.26
4 Copra	M.T.	472.05
5 Cotton Raw	"	9822.05
6 Cotton goods	'000 Metres	12628.94
7 Fruits, Cashewnuts	M.T.	--
8 Rice	"	7017.00
9 Other food grains	"	22647.85
10 Jute-Gunny Bags	Nos. in Lakhs	53.82
11 Machinery and Mill work	Value	--
12 Manures	M.T.	11.00

AND COMMERCE

18.2

OF KERALA (1963-64)

(Value Rs. in lakhs)

Foreign		Total		
Value	Quantity	Value	Quantity	Value
4	5	6	7	8
97.56	..	0.21	..	97.77
140.91	..	58.21	..	199.12
322.89	4.33	11.17	355.59	334.06
4.13	5335.10	52.86	5807.15	56.99
405.54	15148.20	1016.08	24970.25	1421.62
233.36	12628.94	233.36
..	167432.65	1204.65	167432.70	1204.65
30.06	31238.30	158.26	38255.30	188.32
138.72	22647.85	138.72
67.49	53.82	67.49
..	..	682.13	..	682.13
0.08	87741.00	119.55	87752.00	119.63

1	2	3
13 Metals, Minerals and ores	..	12244.69
14 Kerosene Oil	'000 Litres	172048.00
15 Lubricating Oil	..	13397.72
16 Other Mineral Oil	..	548844.55
17 Paints and Colours	Value	..
18 Paper and Paste board	M.T.	170.40
19 Provisions and Oil Manstoves	..	196.44
20 Rubber Raw	..	73.38
21 Salt	..	56875.01
22 Seeds excluding copra	..	6806.64
23 Soap	..	3324.70
24 Sulphur
25 Textile Manufactured	Value	..
26 Tobacco manufactured	M.T.	2638.55
27 Wood pulp
28 Others	Value	..
Total	Value	..

Source: Bureau of Economics and Statistics,

4	5	6	7	8
245.63	20452.00	261.49	32696.69	507.10
283.37	147348.36	240.29	319396.36	523.66
226.28	1685.86	13.87	15083.58	240.15
717.29	210430.16	218.57	759274.71	935.86
42.02	..	0.60	..	42.62
2.37	7500.70	56.53	7671.10	58.90
2.36	23994.90	368.03	24191.34	370.39
1.86	1214.41	29.62	1287.79	31.49
37.55	56875.01	37.55
54.83	6806.84	54.83
88.96	3324.70	88.96
..	35534.30	61.40	35534.30	61.40
19.01	..	31.63	..	50.64
108.01	2638.55	108.01
..	12593.80	118.08	12593.80	118.08
511.64	..	118.77	..	630.41
3781.90	..	4822.00	..	8603.90

Government of Kerala.

XVIII. TRADE AND COMMERCE

TABLE 18.3

EXPORT FROM THE PORTS OF KERALA

(Value in crores of Rupees)

Year	Coastal	Foreign	Total
1951-52	24.93	58.71	83.64
1952-53	24.34	55.69	80.03
1953-54	23.42	55.31	78.73
1954-55	22.26	56.68	78.94
1955-56	26.71	57.04	83.75
1956-57	26.38	57.73	84.11
1957-58	27.29	58.86	86.15
1958-59	28.73	63.54	92.27
1959-60	32.01	66.52	98.53
1960-61	40.83	70.43	111.26
1961-62	43.42	72.28	115.70
1962-63	40.12	77.77	117.89
1963-64	46.84	79.07	125.91

Source: Bureau of Economics and Statistics, Government of Kerala.

VALUE OF FOREIGN TRADE INDIA & KERALA

RS IN CRORES

-800

-600

-700

-600

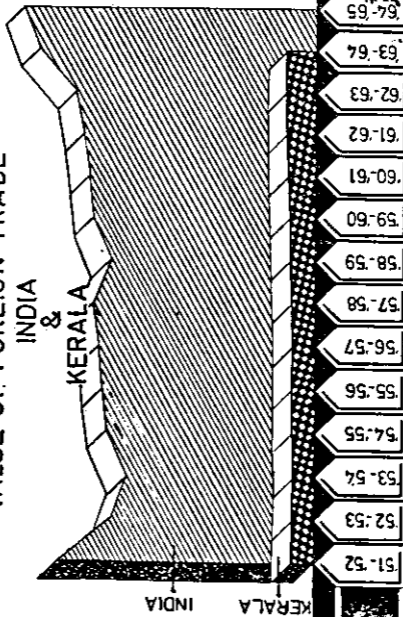
-500

-400

-300

-200

-100





XVIII. TRADE AND COMMERCE

TABLE 18.4

IMPORTS INTO THE PORTS OF KERALA

(Value in crores of rupees)

Year	Coastal	Foreign	Total
1951-52	26.58	21.47	48.05
1952-53	30.34	22.05	52.39
1953-54	35.86	21.86	57.72
1954-55	26.91	29.03	55.94
1955-56	34.59	24.78	59.37
1956-57	29.91	30.49	60.40
1957-58	26.96	30.72	57.68
1958-59	28.30	26.94	55.24
1959-60	25.41	33.78	59.19
1960-61	32.12	43.41	75.53
1961-62	38.85	41.25	80.10
1962-63	42.92	38.54	81.46
1963-64	37.82	48.22	86.04

Source: Bureau of Economics and Statistics Government of Kerala.

XIX. PRICES**TABLE 19.1**

**WORKING CLASS CONSUMER PRICE INDEX NUMBERS
IN KERALA**

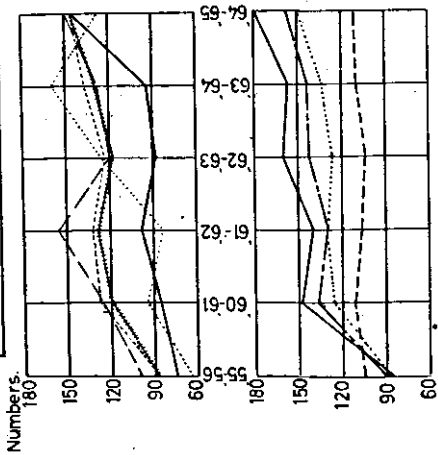
Centre	1961	1962	1963	1964	Sept. 1965
Trivandrum	474	487	500	553	602
Quilon	493	507	509	567	643
Punalur	473	503	516	562	597
Alleppey	461	466	492	549	603
Changanacherry	468	472	485	554	628
Kottayam	470	485	495	557	635
Alwaye	479	488	511	582	632
Ernakulam	483	489	517	577	639
Trichur	484	491	510	575	635
Chalakydy	489	489	507	580	633
Munnar	477	463	472	510	552
Sherthalai	477	462	496	552	621
Kozhikode	501	512	529	606	670

Base for Kozhikode is for the year ended June 1936 = 100
Base for other centres—August 1939 = 100.



INDEX NUMBERS OF WHOLESALE PRICES OF AGRICULTURAL COMMODITIES

Base 1952-'53 = 100
(Monthly average)



Food crops

Rice

Molasses

Condiments & spices

Fruits & vegetables

Non-food crops

Oil seeds

Plantation crops

All crops

XIX. PRICES

TABLE 19.2
INDEX NUMBERS OF WHOLESALE PRICES OF AGRICULTURAL COMMODITIES
(Monthly average) (Base 1952-53=100)

Crops	1955-56	60-61	61-62	62-63	63-64	64-65
Food Crops						
Rice	87	119	128	117	129	146
Molasses	88	127	132	123	137	146
Condiments & Spices	64	94	83	126	159	128
Fruits & Vegetables	99	125	155	120	128	149
Non-Food Crops	74	85	98	89	94	145
Oil seeds	91	136	129	142	143	158
Plantation Crops	85	147	139	160	157	179
All Crops	104	111	106	103	109	110
	88	125	129	126	134	150

Source: Bureau of Economics and Statistic Souls of Kerala.

XIX. PRICES

TABLE 19.3

INDEX NUMBERS OF PARITY BETWEEN PRICES
RECEIVED AND PAID BY FARMERS

(Base 1952-53=100)

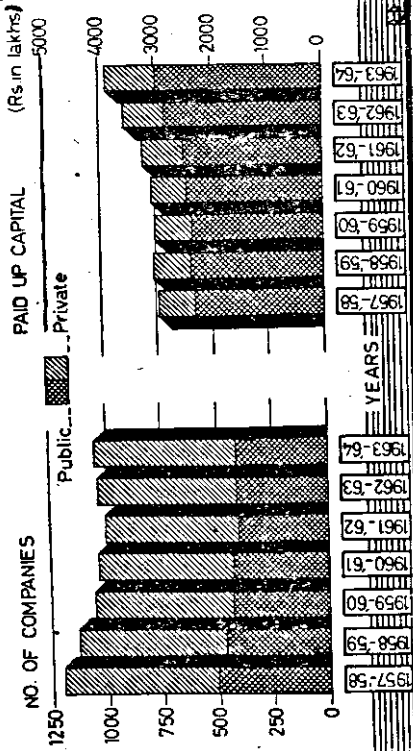
Year	Index Number of				Parity
	Prices Received	Domestic Expenditure	Farm Cultivation cost	Prices paid	
1953-54	95	96	103	99	97
1954-55	76	89	90	89	85
1955-56	74	91	89	90	82
1956-57	82	102	96	98	83
1957-58	83	103	99	101	82
1958-59	87	111	101	106	83
1959-60	104	116	109	112	99
1960-61	108	119	117	118	92
1961-62	112	123	129	126	89
1962-63	112	125	141	133	84
1963-64	113	134	145	139	81
1964-65	148	150	161	155	95

Source: Bureau of Economics and Statistics, Government of Kerala.



GROWTH OF JOINT STOCK COMPANIES

Public and Private



XX. JOINT STOCK COMPANIES**TABLE 20.1****GROWTH OF JOINT STOCK COMPANIES IN KERALA**

Year	No. of Joint stock companies		Paid up Capital (in 1000 Rs.)	
	Public	Private	Public	Private
1957-58	508	704	229610	64986
1958-59	471	663	238300	67600
1959-60	436	618	232325	68044
1960-61	435	604	240762	63457
1961-62	409	598	249430	72820
1962-63	413	620	279502	77142
1963-64	406	625	289033	76238

Source: Registrar of Joint stock companies, Ernakulam.

XX. JOINT STOCK COMPANIES

TABLE 20.2

JOINT STOCK COMPANIES AT WORK (PUBLIC)

Industrial Group	Number of Companies					Paid up capital (Rs. in lakhs)
	1957-58	1963-64	1957-58	1963-64	1957-58	
1	2	3	4	5		
1 Agriculture and allied activities	104	87	768.81	683.03		
2 Mining and quarrying.
3 Processing and manufacture of food stuffs	41	33	333.76	343.85		
4 Processing and manufacture of metals & chemicals	53	42	562.95	850.98		

5	Processing and manufacture of others	71	69	175.85	587.85
6	Construction and utilities	2	2	11.08	10.00
7	Commerce, Trade & Finance	207	155	427.48	391.75
8	Transport, Communications and storage	7	7	8.52	18.69
9	Community & Business Services	9	6	1.58	1.86
10	Personal and other services	14	5	6.07	2.92
Total		508	406	2296.10	2890.33

Source: Registrar of Joint Stock Companies, Kerala.

XX. JOINT STOCK COMPANIES

TABLE 20.3

JOINT STOCK COMPANIES AT WORK (PRIVATE)

Industrial Group	Number of companies			Paid up capital (Rs. in lakhs)
	1957-58	1963-64	1957-58 1963-64	
1	2	3	4	5
1 Agriculture and allied activities	61	72	68.16	115.52
2 Mining and quarrying	4	5	32.80	57.83
3 Processing and manufacture of food stuffs	73	61	115.32	110.34
4 Processing and manufacture of metals and chemicals	39	61	103.11	48.13

5	Processing and manufacture of others	80	88	63.64	87.38
6	Construction and utilities	1	3	1.94	4.22
7	Commerce, Trade & Finance	373	274	207.08	239.06
8	Transport, Communications and storage	36	34	43.10	81.76
9	Community & Business Services	7	6	0.95	1.20
10	Personal and other services	30	21	13.75	16.94
	Total	704	625	649.85	762.38

133

Source: Registrar of Joint Stock Companies, Kerala.

XXI. BANKS AND

TABLE

NUMBER OF COMMERCIAL

Type of Banks	1961		
	No. of Banks	Paid-up capital	Reserves
Scheduled Banks	3	12145	4622
Non-Scheduled Banks	81	12139	6803
Total	84	24284	11425

Source: Statistical tables relating to Banks in India,

CO-OPERATIVE SOCIETIES

21.1

BANKS IN KERALA

(Rs. in thousands)

1962			1963			1964		
No. of Banks	Paid-up capital	Reserves	No. of Banks	Paid-up capital	Reserve	No. of Banks	Paid-up capital	Reserves
3	12328	4969	3	12589	5303	3	12591	5613
81	11920	7247	72	10471	7024	18	6202	4399
84	24248	12216	75	23060	12327	21	18793	10012

Reserve Bank of India.

XXI. BANKS AND CO-OPERATIVE SOCIETIES**TABLE 21.2****CO-OPERATIVE SOCIETIES**

(Amount in Rs. lakhs)





	1960-61	1962-63
1 Number of Societies	7072	7763
2 Membership (in '000)	1712	2117
3 Paid-up share capital	533	823
4 Reserve and other funds	242	293
5 Loans from—		
(i) Central Financing agencies	622	1210
(ii) Reserve Bank	150	319
(iii) Government	235	301
(iv) Other Sources	97	238
6 Deposits from—		
(i) Central Societies	43	100
(ii) Primary Societies	188	246
(iii) Individuals and Other sources	476	601
7 Total working capital (items 3 to 6)	2586	4131
8 Average working capital per head of Population (in Rs.)	15.30	23.16
9 No. of members of primary societies per 1000 inhabitants	101	N.A.

Source: Statistical statements relating to the Co-operative Movement in India—Reserve Bank of India.



Revenue Budget 1985-86

Revenue

-  STATE TAXES
-  SHARED TAXES
-  GRANTS IN AID FROM CENTRAL GOVERNMENT
-  OTHER NON TAX REVENUE

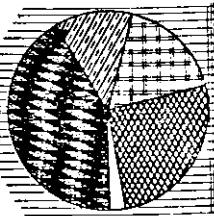
Expenditure

-  DEFICIT
-  SOCIAL SERVICES
-  DEVELOPMENT SERVICES
-  ADMINISTRATIVE SERVICES
-  DEBT SERVICES
-  OTHER EXPENDITURE
-  EXPENDITURE ON TAX YIELDING DEPARTMENTS

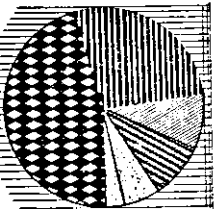
IN LAKHS.

TOTAL REVENUE RS	8793.131
DEFICIT	218.78
EXPENDITURE	8993.131

REVENUE



EXPENDITURE



XXII. FINANCE

TABLE 22.1

STATE BUDGET—(REVENUE ACCOUNT)—REVENUE

(Rupees in lakhs)

Head of Account	1963-64 Accounts	1964-65 Revised Estimate	1965-66 Budget Estimate
Direct Taxes	1046.74	1183.92	1352.25
Indirect Taxes	2972.55	3277.99	3466.98
Total Tax Revenue	4019.29	4461.91	4819.23
Total Non-Tax Revenue	3206.32	3536.74	3735.18
Total Revenue	7225.61	7998.65	8554.41

Source: Finance Department.

XXII. FINANCE

TABLE 22.2

STATE BUDGET—EXPENDITURE ON REVENUE ACCOUNT

(Rupees in lakhs)

Head	1963-64 Accounts	1964-65 (Revised Estimate)	1965-66 (Budget Estimate)
1	2	3	4
Direct demand on Revenue Expenditure on Tax yielding departments.	217.21	238.57	269.96
Development Services	2188.30	2291.75	2424.33
Social Services	2958.95	3547.10	3995.43

TABLE 22.2—(contd.)

1	2	3	4
Administrative Services	692.32	737.57	810.14
Debt services	576.08	656.84	774.38
Others	459.09	468.42	498.89
Total Revenue Expenditure	7091.95	7940.25	8773.13

Source: Finance Department.

XXII. FINANCE

TABLE 22.3

STATE BUDGET—(CAPITAL—ACCOUNT)—RECEIPTS

(Rupees in lakhs)

Major Heads	Accounts - 1963-64	Revised Estimate 1964-65	Budget Estimate 1965-66
Excess of Revenue over Expenditure	133.66	58.41	..
PUBLIC DEBT AND LOANS	5132.15	9460.23	9634.16
Permanent Debt	0.01	439.00	505.00
Floating Debt	1366.44	5000.00	5000.00
Loans from Central Government	3396.76	3728.04	3800.11
Other Loans	76.92	82.10	99.90

Loans and advances by the
State Government

258.72 202.33 228.80

Inter State settlement

33.30 8.76 0.35

CONTINGENCY FUND RECEIPTS

3.16

PUBLIC ACCOUNTS

9078.51 10292.47 9507.82

Unfunded Debt

681.22 746.51 783.08

Deposits and advances

4069.15 4937.18 4101.38

Remittances

4328.14 4608.78 4623.36

Total

14347.48 19811.11 19141.98

Opening Cash Balance

(—)84.58 (—)642.25 (—)603.62

Grand Total

14262.90 19168.86 18538.36

Source: Finance Department.

XXII. FINANCE

TABLE 22.4

STATE BUDGET (CAPITAL ACCOUNT)—EXPENDITURE
(Rs. in lakhs)

Major Heads	Accounts 1963-64	Revised estimate 1964-65	Budget estimate 1965-66
Excess on Income over Revenue Capital Account outside the Revenue Account	218.72
	1212.31	1315.31	1315.61
PUBLIC DEBT AND LOANS	4524.85	8251.81	8469.61
Permanent Debt	214.27	70.23	8.23
Floating Debt	1366.44	5000.00	5000.00
Loans from the Central Government	1618.30	1489.65	1646.94
Other Loans	19.41	18.49	22.70

Loans and Advances by the State Government	1201.52	1625.68	1791.49
Inter State Settlement	104.91	47.76	0.25
CONTINGENCY FUND DISBURSE- MENT	12.51	(—)12.52	..
PUBLIC ACCOUNT	9155.47	10187.88	9220.41
Unfunded Debt	583.60	652.08	642.63
Deposits and Advances	3871.38	4932.60	3958.51
Remittances	4700.49	4606.20	4619.27
Total Disbursements	14905.14	19772.48	19224.35
Closing Cash Balance	(—)642.24	(—)603.62	(—)685.99
Grand Total	14262.90	19168.86	18538.36

Source: Finance Department.

XXII. FINANCE

TABLE 22.5

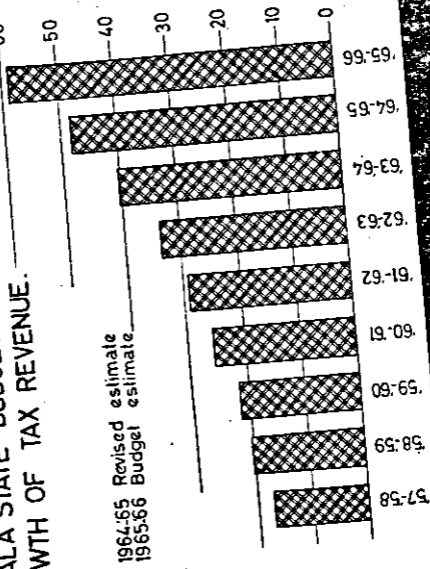
STATE BUDGET—GROWTH OF TAX AND NON-TAX REVENUE
(Rs. in lakhs)

Year	Tax revenue	Non-tax revenue
1957-58	1755.40	1394.81
1958-59	2032.23	1872.47
1959-60	2265.37	2018.52
1960-61	2598.53	2442.71
1961-62	2930.12	2362.68
1962-63	3427.84	3174.05

KERALA STATE BUDGET-REVENUE ACCOUNT

Rs. In crores

GROWTH OF TAX REVENUE.



1964-65 Revised estimate
 1965-66 Budget estimate



KERALA STATE BUDGET-REVENUE ACCOUNT GROWTH OF NON-TAX REVENUE.

Rs. in crores

1964-65 Revised estimate
1965-66 Budget estimate

50

40

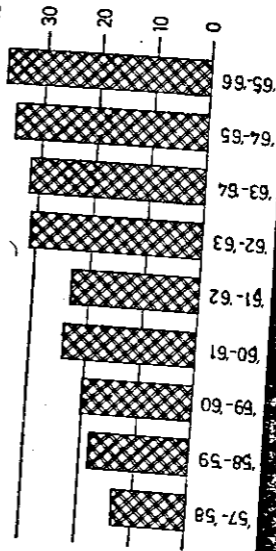




TABLE 22.5—(concl'd)

Year	Tax revenue	Non-tax revenue
1963-64	4019.28	3206.33
1964-65	4861.91	3536.74
1965-66	5903.34	3735.12

Source: Finance Department.

XXII.
TABLE
SMALL
(Rs. in lakhs)

Scheme of Saving	1961-62	
	Gross	Net
National Defence Certificate	87.20	44.09
Post Office Savings Bank	678.60	34.70
Defence Deposit Certificate	24.47	18.46
15 Year Annuity	0.21	-0.56
Cumulative Time Deposit	20.16	18.82
Prize Bonds	7.86	

Source: National Savings Organisation, Trivandrum.

FINANCE

22.6

SAVINGS

(Rs. in lakhs)

1962-63		1963-64		1964-65	
Gross	Net	Gross	Net	Gross	Net
107.05	53.05	138.47	86.75	105.20	44.10
589.26	52.04	653.80	54.61	760.75	43.35
20.73	15.93	28.47	25.29	20.04	16.21
-0.01	0.80	0.16	-0.33	0.03	0.53
34.94	31.94	54.56	46.60	63.33	37.56
5.22		9.81		4.94	

CLASSIFICATION OF LOAN APPLICATION RECEIVED,
(UNDER AGENCY ARRANGE

(Amount Rs. in lakhs)

District	Applications received			
	Upto 1963		Upto 1964	
	No.	Amount	No.	Amount
1 Trivandrum	12	3.70	14	4.99
2 Quilon	30	14.60	33	16.26
3 Alleppey	14	6.27	17	7.71
4 Kottayam	18	9.25	19	9.72
5 Ernakulam	34	18.86	35	19.00
6 Trichur	49	27.59	50	28.58
7 Palghat	6	3.31	11	5.81
8 Kozhikode	13	8.24	14	8.74
9 Cannanore	12	4.57	15	5.34
Total	188	96.39	208	106.15

Source: Kerala Financial Corporation.

FINANCE

22.7 (i)

AMOUNT SANCTIONED BY FINANCIAL CORPORATION
MENT WITH GOVERNMENT)

Amount sanctioned				Amount disbursed			
Upto 1963		Upto 1964		Upto 1963		Upto 1964	
No.	Amount	No.	Amount	No.	Amount	No.	Amount
5	1.08	5	1.08	5	1.05	5	1.05
13	4.22	16	5.82	12	3.64	13	4.25
10	3.61	10	3.27	8	2.48	9	2.77
13	6.33	15	6.82	12	5.61	14	6.35
19	6.98	23	8.92	15	4.32	22	7.25
22	11.94	29	15.38	17	9.14	24	12.57
3	1.20	8	3.50	3	1.20	5	2.03
8	3.43	8	3.40	8	2.48	8	2.91
4	1.47	6	2.07	2	0.62	5	1.36
97	40.26	120	50.26	82	30.54	105.	40.54

TABLE

CLASSIFICATION OF LOAN APPLICATIONS RECEIVED,
(CORPORATION)

District	Application received			
	Upto 1963		Upto 1964	
	No.	Amount	No.	Amount
1 Trivandrum	13	36.03	13	36.03
2 Quilon	41	70.45	42	72.46
3 Kottayam	43	93.45	44	94.95
4 Alleppey	22	37.45	22	37.45
5 Ernakulam	32	110.20	33	117.70
6 Trichur	15	38.05	15	38.05
7 Kozhikode	13	59.75	14	61.75
8 Palghat	2	10.75	3	13.25
9 Cannanore	8	29.60	8	29.60
Total	189	485.73	194	501.24

Source: Kerala Financial Corporation.

FINANCE

22.7 (ii)

AMOUNT SANCTIONED BY FINANCIAL CORPORATION
(FUNDS)

(Amount in lakhs of rupees)

Amount sanctioned				Amount disbursed			
Upto 1963		Upto 1964		Upto 1963		Upto 1964	
No.	Amount	No.	Amount	No.	Amount	No.	Amount
9	22.55	9	22.55	9	19.75	9	22.55
35	42.69	36	44.89	34	30.57	35	38.57
35	70.66	36	72.16	34	65.98	35	66.58
19	24.10	19	24.10	19	22.47	19	22.47
20	48.47	23	70.72	19	42.02	21	55.52
10	20.88	10	20.88	10	15.78	10	19.78
7	28.16	8	32.41	4	15.37	5	17.94
1	7.45	1	7.45	1	5.90	1	5.90
4	13.85	5	14.85	4	9.05	4	13.55
140	278.81	147	310.01	134	226.89	139	262.86

XXIII. STATE INCOME

TABLE 23.1

STATE INCOME OF KERALA (AT 1960-61—PRICES)

(Rs. in lakhs)

Sector	1960-61	1961-62	1962-63	1963-64	1965-66 (Estimates)
1	2	3	4	5	6
1 Agriculture	21995.68	22077.75	23185.20	24136.25	
2 Animal Husbandry	1772.73	1811.25	1850.06	1888.80	
3 Forestry	753.82	800.26	887.64	822.41	
4 Fishery	580.73	414.48	315.62	284.06	
Total Agriculture	25102.96	25103.74	26238.52	27131.52	28266.00
5 Mining and Stone Quarrying	267.40	270.80	226.50	176.40	
6 Factory Establishments	2949.98	3115.78	3172.78	3171.90	
7 Small Enterprises	3297.31	3365.16	3437.54	3531.21	
8 Construction	507.96	524.02	522.98	591.20	
Total Industries	7022.65	7275.76	7359.80	7470.71	8844.00

STATE INCOME (at '60-'61 prices)

INDEX



INDUSTRIES



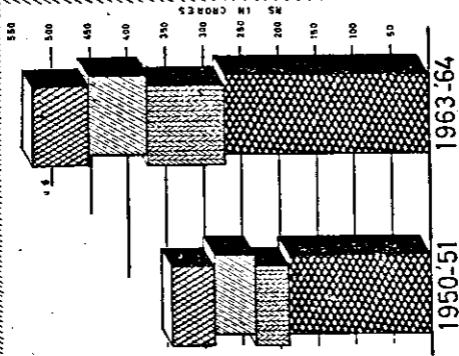
COMMERCE
&
TRANSPORT & COMMUNICATIONS

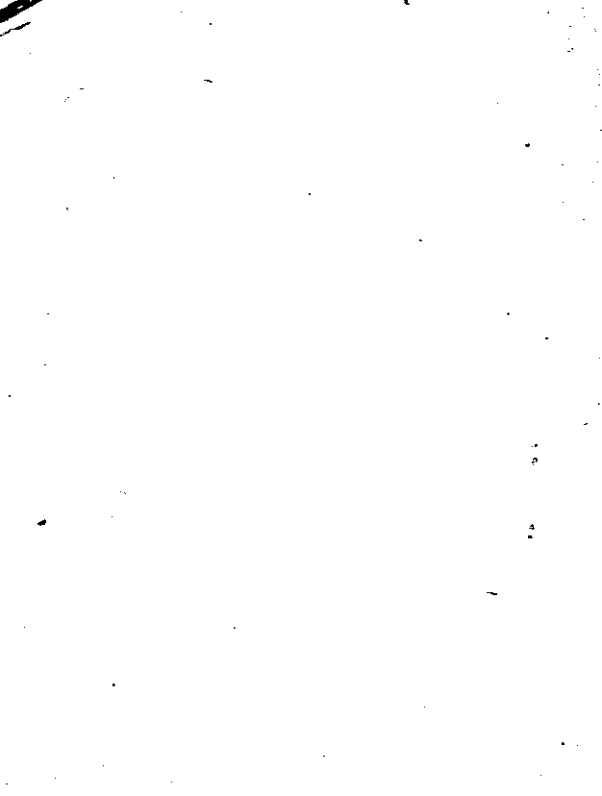


OTHER SERVICES



AGRICULTURE





	1	2	3	4	5	6
9	Banks and Insurance	300.23	328.06	355.89	372.58	
10	Communications	156.00	166.74	177.49	188.24	
11	Railways	381.00	391.00	401.10	411.20	
12	Other Commerce and other Trans-ports	6162.07	6326.03	6516.68	6707.41	
	Total Commerce, Transport and Communications	6999.30	7211.93	7451.16	7679.43	
13	Professions and Liberal Arts	3497.45	2722.94	4031.48	4190.34	
14	Public Authorities	2636.15	2911.39	3289.71	3566.30	19566.00
15	Domestic Services	1030.78	1205.01	1323.81	1457.46	
16	House property	1122.81	1147.27	1172.45	1198.02	
	Total Other Services	8287.19	8986.61	9817.45	10412.12	
	Total State Income	47412.10	48578.04	50866.93	52693.78	56676.00
	Per capita Income (Rs.)	283.07	283.70	290.57	294.41	303.00

Source: Bureau of Economics and Statistics, Government of Kerala

XXIII. STATE INCOME

TABLE 23.2

STATE INCOME OF KERALA AT CURRENT PRICES
(Rs. in lakhs)

Sector	1955-56	1959-60	1960-61
1	2	3	4
1 Agriculture	14771.00	20544.80	21995.68
2 Animal Husbandry	1358.74	1665.27	1772.73
3 Forestry	313.50	292.98	753.82
4 Fisheries	332.25	401.87	580.73
Total Agriculture	16775.49	22904.92	25102.96
5 Mining	213.00	283.81	267.40
6 Factory Establishment	2767.80	2920.60	2949.98
7 Small Enterprises	2693.01	3256.15	3297.31
8 Construction	315.66	531.60	507.96
Total Industries	5989.47	6992.16	7022.65

	1	2	3	4
9 Banks and Insurance		176.70	283.47	300.23
10 Communications		110.85	150.14	156.00
11 Railways		226.00	329.00	381.00
12 Other Commerce and other Transport		4752.91	5942.39	6162.07
Total Commerce, Transport and Communications		5266.46	6705.00	6999.30
13 Professions and Liberal Arts		2033.27	3160.12	3497.45
14 Public Authorities		1544.17	2346.79	2636.15
15 Domestic Services		679.43	996.76	1030.78
16 House property		745.16	1034.13	1122.81
Total other services		5002.03	7537.80	8287.19
Total State Income		33033.45	44139.88	47412.10
Per Capita Income (in rupees)		220.30	269.44	283.07

Source: Bureau of Economics and Statistics.

XXIV. FIVE YEAR PLANS

TABLE 24.1

PLAN EXPENDITURE AND PROVISION

(Rs. in lakhs)

Head of Development	1st Plan	2nd Plan	3rd Plan
	1951-56 Actuals	1956-61 Actuals	1961-66 Provision
1	2	4	5

I Agricultural Programmes

3171.70

II Community Development and Co-operation

248.51 1336.62 1123.16

III Irrigation and Power

1570.62 3084.32 5919.00

State Plans



INDUSTRY & MINING



TRANSPORT & COMMUNICATIONS



AGRICULTURE & DEVELOPMENT



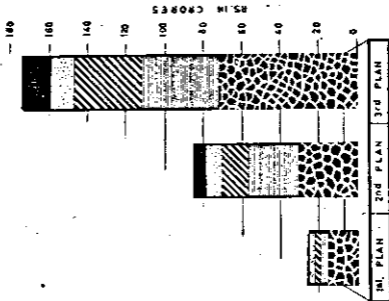
SOCIAL SERVICES



IRRIGATION & POWER



Heads





IV Industry and Mining	50.43	618.83	1719.50
V Transport and Communication	335.89	824.22	1088.00
VI Social Service	383.83	2378.55	3826.44
VII Miscellaneous	..	261.70	152.20
Grand Total	2589.28	8504.54	17000.00

Source: Finance Department, Government of Kerala.

XXIV. FIVE

TABLE

THIRD FIVE YEAR PLAN

Sectors	Third Plan Provision 1961-66	Accounts 1961-62
I Agricultural Programmes	3171.70	255.55
II Community Development & Corporation	1123.16	266.56
III Irrigation & Power	5919.00	933.42
IV Industry & Mining	1719.50	217.18
V Transport & Communica- tion	1088.00 ;	266.87
VI Social Services	3826.44	666.61
VII Miscellaneous	152.20	19.31
Total—State Plan	17000.00	2625.50

Source: Finance Department, Government of Kerala.

YEAR PLANS

24.2

(KERALA) AT A GLANCE

(Rs. in lakhs)

Accounts 1962-63	Accounts 1963-64	Revised Estimate 1964-65	Budget Estimate 1965-66
374.22	516.68	637.68	667.87
215.05	194.61	199.57	211.06
1050.15	1483.64	1817.90	1855.60
245.49	283.72	304.14	288.56
314.49	231.90	200.39	209.58
739.81	796.53	859.32	905.42
28.20	17.46	20.90	26.53
2967.41	3524.54	4039.90	4164.62

XXV. COMMUNITY DEVELOPMENT

TABLE 25.1

COVERAGE OF N. E. S. BLOCKS IN KERALA

District	No. of Blocks	Area in Sq. K.M.	No. of Panchayats	No. of Villages	Population 1961 Census ('000)
1 Trivandrum	12	1761.04	75	92	1407.53
2 Quilon	17	3556.52	98	107	1875.10
3 Alleppey	17	1714.52	94	96	1535.13
4 Kottayam	13	5148.67	89	100	1587.25
5 Ernakulam	17	2484.94	101	110	1520.83

6	Trichur	17	2056.66	89	231	1530.20
7	Palghat	16	4759.81	114	320	1685.11
8	Kozhikode	23	6243.30	147	324	2310.59
9	Cannanore	12	5363.29	115	188	2684.28
10	Kerala	144	33088.75	922	1568	15106.02

Source: Development Department, Government of Kerala.

ALL INDIA TABLES

I. AREA AND POPULATION OF INDIAN STATES

(1961 Census)

State	Area (Sq. K.M.)	Population ('000)			Density (Sq. K.M.)	Sex Ratio
		Male	Female	Total		
1	2	3	4	5	6	7
Andhra Pradesh	275281	18162	17822	35984	130	981
Assam	121965	6328	5545	11873	97	876
Bihar	174038	23301	23154	46455	267	994
Gujarat	187115	10634	9999	20633	110	940
Jammu & Kashmir	222800*	1897	1664	3561†	N.A.	878
Kerala	38855	8362	8542	16904	435	1022
Madhya Pradesh	443452	16578	15794	32372	73	953

Madras	130357	16911	16776	33687	258	992
Maharashtra	307477	20429	19125	39554	128	936
Mysore	192204	12041	11546	23587	123	959
Orissa	155825	8771	8778	17549	113	1001
Punjab	122005	10892	9415	20307	166	864
Rajasthan	342274	10564	9592	20156	59	808
Uttar Pradesh	294364	38634	35112	73746	251	909
West Bengal	87617	18599	16327	34926	398	878
India	**3276141	226294	212941	439235	144	941

* Includes that area of Jammu & Kashmir which is under illegal occupation of Pakistan & China.

** Includes Sikkim & other Union territories.

† The population of the portion of Jammu and Kashmir under the occupation of Pakistan and China not included.

Source: Registrar General, Government of India.

ALL INDIA

II AREA AND POPULATION OF TOWNS AND VILLAGES

India/State	Towns			
	Number	Area	Popu- lation (lakhs)	Number
India	2700	14867	789.36	567351
Andhra Pradesh	223	1446	62.75	27084
Assam	60	116	9.13	25702
Bihar	153	789	39.14	67665
Gujarat	181	733	53.17	18584
Jammu & Kashmir	43	118	5.93	6559
Kerala	92	432	25.54	1573
Madhya Pradesh	219	720	46.27	70414
Madras	339	2016	89.91	14124
Maharashtra	266	2544	111.63	35851
Mysore	231	1184	52.66	26377
Orissa	62	397	11.10	46466
Punjab	189	432	40.89	21269
Rajasthan	145	2119	32.81	32241
Uttar Pradesh	267	957	94.80	112624
West Bengal	184	658	85.41	38465

Source:—Registrar General of India.

TABLES

BY STATES—CENSUS OF INDIA 1961

(Area in acres)

Villages (inhabited)

Total

Area (thousands)	Population (lakhs)	Area (thousands)	Population (lakhs)	Density (Per Sq. mile)
1213.54	3602.98	1228.40	4392.35	358
104.61	297.90	106.05	359.83	339
47.14	109.60	47.26	118.73	251
66.15	425.42	66.94	464.56	694
70.32	153.17	71.06	206.33	290
53.55	29.68	53.67	35.61	66
14.57	143.50	15.00	169.04	1127
168.32	277.45	169.04	323.72	192
48.14	246.96	50.15	336.87	672
115.74	283.91	118.28	396.54	334
72.66	183.20	73.85	235.87	319
59.77	164.39	60.17	175.49	292
46.87	162.18	47.31	203.07	429
129.77	168.74	131.89	201.56	153
112.92	642.67	113.88	737.46	648
33.54	263.85	34.19	349.26	1021

ALL INDIA TABLES
III. PERCENTAGE DISTRIBUTION OF THE POPULATION ACCORDING TO INDUSTRIAL CATEGORIES

Name of State	Cultivator	Agricul- Mining, House- tural quarrying, hold		Manu- facturing other than household industry	
		Labour fishing etc.	industry		
1	2	3	4	5	6
Andhra Pradesh	20.81	14.83	1.56	5.04	1.32
Assam	27.99	1.58	4.36	2.37	0.87
Bihar	22.31	9.51	1.40	2.28	0.91
Gujarat	21.90	6.07	0.51	2.69	2.60
Jammu & Kashmir	32.39	0.52	0.72	2.68	0.94
Kerala	6.97	5.79	2.88	2.89	3.13
Maharashtra	22.09	11.40	1.04	2.10	3.30
Madras	19.17	8.40	1.29	3.58	2.52
Madhya Pradesh	32.78	8.70	1.52	2.60	1.04
Mysore	24.62	7.47	1.42	3.00	1.79
Orissa	24.80	7.43	0.75	3.03	0.49
Punjab	19.68	2.68	0.33	2.66	1.74
Rajasthan	35.00	1.45	0.85	2.97	0.86
Uttar Pradesh	24.99	4.42	0.23	2.44	1.09
West Bengal	12.77	5.07	1.65	1.40	3.78
India	22.70	7.18	1.18	2.74	1.82

Name of State	Trans- port						Total wor- kers	Total non- workers
	Con- struc- tion	Trade and Com- merce	Storage and Communi- cation	Other ser- vices	10	11		
	7	8	9	10	11	12		
Andhra Pradesh	0.62	2.22	0.66	4.81	51.87	48.13		
Assam	0.34	1.56	0.64	3.57	43.28	56.72		
Bihar	0.23	1.12	0.50	3.14	41.40	56.60		
Gujarat	0.44	1.99	0.77	4.10	41.07	58.93		
Jammu & Kashmir	0.25	0.94	0.37	3.98	42.79	57.21		
Kerala	0.42	1.90	0.91	8.42	33.31	66.69		
Maharashtra	0.60	2.16	1.13	4.09	47.91	52.09		
Madras	0.62	2.25	0.75	6.99	45.57	54.43		
Madhya Pradesh	0.53	1.25	0.49	3.39	52.30	47.70		
Mysore	0.80	1.66	0.46	4.26	45.48	54.52		
Orissa	0.18	0.84	0.29	5.85	43.66	56.34		
Punjab	0.69	1.90	0.70	4.59	34.97	65.03		
Rajasthan	0.54	1.43	0.58	3.37	47.55	52.45		
Uttar Pradesh	0.29	1.44	0.54	3.68	39.12	60.88		
West Bengal	0.43	2.50	1.13	4.44	33.16	66.84		
India	0.47	1.74	0.69	4.46	42.98	57.02		

Source: Census of India Paper No. 1 (1961)

ALL INDIA TABLES

IV. INDEX NUMBERS OF AGRICULTURAL PRODUCTION

(Base 1950-51 = 100)

Items	1956-57	1960-61	1961-62	1962-63	1963-64
1. Cereals:—					
Rice	137.0	154.9	158.1	144.9	165.8
Wheat	139.2	160.9	176.4	158.7	142.2
All Cereal (a)	133.4	151.3	155.0	146.6	154.9
2. Pulses:—					
Gram	163.1	165.6	152.6	139.9	117.2
All Pulses (b)	134.0	140.2	131.2	127.5	110.4
3. Total Food grains (Cereals & Pulses)	133.5	149.8	152.9	144.1	149.1
4. Oil seeds (c)	122.1	129.9	136.4	139.8	135.6

5. Fibres:—								
Cotton	464.7	183.6	153.7	182.3	186.4			
Jute	130.5	114.4	182.3	155.3	169.8			
All Fibres (d)	157.2	161.3	168.7	179.3	186.4			
6. Plantation crops (e)	118.3	129.9	135.2	134.1	135.3			
7. Miscellaneous								169
Sugarcane (Gur)	120.7	152.9	144.0	135.4	145.6			
Miscellaneous (f)	117.1	141.3	136.7	137.7	137.3			
8. Total Non-food Grains	124.2	139.7	140.9	142.6	143.3			
9. General Index	130.0	146.1	147.9	143.5	147.0			

Source: Planning Commission, Basic statistics relating to Indian Economy.

ALL INDIA TABLES

V. INDEX NUMBERS OF INDUSTRIAL PRODUCTION

(Base 1956 = 100)

Groups	1957	1960	1961	1962	1963
1 Coal	110.3	131.3	140.0	153.6	167.0
2 Textiles	99.9	104.8	108.4	113.5	120.9
3 Paper and Paper products	109.5	173.4	181.9	190.6	226.8
4 Rubber products	104.1	141.3	157.4	169.4	187.0
5 Chemicals & Chemical Products	100.5	147.7	175.3	185.7	..
6 Non-Metallic mineral products (Excluding products of petroleum & coal)	114.6	168.1	180.8	191.1	204.6

7	Basic Metal Industries	99.5	183.1	181.6	227.1	259.1
8	Manufacture of Metal Products	97.3	105.9	152.3	179.1	218.5
9	Manufacture of Machinery except electrical machines	129.5	236.7	268.7	290.5	364.5
10	Manufacture of electrical machinery, apparatus appliances & supplies	118.6	175.9	183.2	211.3	237.7
11	Electricity generated	112.3	171.0	198.8	223.4	257.9
12	General Index	104.2	130.1	139.2	149.6	163.6

Source: Planning Commission, Basic Statistics relating to Indian economy.

ALL INDIA TABLES

VI. NUMBER OF COWS AND SHE BUFFALOES IN MILK PER THOUSAND POPULATION IN KERALA AND OTHER INDIAN STATES

State	Number of cows and she buffaloes in milk		Rate per thousand population of the State		
	1956	1961	1956	1961	
	1	2	3	4	5
Andhra Pradesh	3017303	2629906	89	73	
Assam	1012955	1254592	96	106	
Bihar	2592908	2416342	63	52	
Bombay	4277810	..	81	..	
Gujarat	..	1702755	..	83	
Jammu & Kashmir	318105	423888	69	118	

Kerala	457711	487736	30	29
Madhya Pradesh	4087860	3712352	148	115
Madras	1716664	1781207	53	53
Maharashtra	..	2468641	..	63
Mysore	1950792	1900000	91	81
Orissa	694638	1073614	45	61
Punjab	2175132	2424902	123	119
Rajasthan	2633955	2651353	150	132
Uttar Pradesh	5149353	5852317	76	79
West Bengal	1428996	2127606	52	61
All India	31906171	33301877	82	76

Source: Directorate of Economics and Statistics, Government of India.

VII. INDUSTRIAL DISPUTES RESULTING IN

State	1961		
	No. of dis-putes	No. of Workers involved	No. of Man-days lost
1 Andhra Pradesh	69	35157	201465
2 Assam	28	12081	72009
3 Bihar	75	25815	158654
4 Bombay
(i) Maharashtra	279	88614	580110
(ii) Gujarat	30	7867	52112
5 Jammu & Kashmir	1	45	45
6 Kerala	146	35506	395315
7 Madhya pradesh	83	22724	215920
8 Madras.	124	32654	175789
9 Mysore	71	30582	80895
10 Orissa	7	15787	236801
11 Punjab	8	574	7206
12 Rajasthan	11	3294	51359
13 Uttar Pradesh	92	44122	516972
14 West Bengal	275	152123	2143538

Source: Labour Bureau, Government of India.

TABLE
WORK-STOPPAGES

1962			1963		
No. of dis- pute	No. of Workers involved	No. of Man- days lost	No. of dis- pute	No. of Workers involved	No. of Man- days lost
81	44733	169612	85	30507	141319
25	15777	29214	18	9056	18411
69	31010	177532	64	23675	122486
..
386	266232	1081042	401	137255	724397
38	12297	86627	62	11086	46999
4	1267	1482	1	65	195
201	99053	2138491	131	32275	148753
57	20409	257206	48	11674	103223
*128	23909	157675	190	49391	424479
78	32128	67928	69	25733	74585
4	1340	4280	2	1356	5670
17	4147	28114	13	3527	29849
13	10388	123846	12	1557	17797
91	35748	376450	95	40289	116454
234	94117	1356260	165	75679	911381

ALL INDIA

VIII. COGNIZABLE CRIMES IN

State	Murder	Dacoity	Robbery
Andhra Pradesh	859	93	148
Assam	358	184	144
Bihar	889	770	609
Gujarat	703	84	465
Jammu & Kashmir	84	21	27
Kerala	242	26	37
Madhya Pradesh	1417	441	916
Madras	746	43	125
Maharashtra	1210	337	1321
Mysore	682	167	148
Orissa	357	63	172
Punjab	548	2	49
Rajasthan	462	77	587
Uttar Pradesh	2395	2103	1841
West Bengal	506	535	495

Source: Central Statistical Organisation.

TABLES

INDIA (1964-65)

House breaking	Theft	Rioting	Others	Total
5750	11287	1956	9016	29109
3752	6374	1366	8954	21132
20751	17074	3459	20289	63841
4170	10558	591	123003	139574
872	883	431	2275	4543
2325	3577	949	10578	17734
20780	30206	1424	24577	79761
8816	19391	2272	21065	50458
12040	36375	1095	22062	74440
5623	9704	967	10543	27834
4921	8974	819	10430	25736
3099	5595	159	10515	19967
6233	6980	1677	13489	29505
40383	47367	6427	35270	135786
10170	26527	3712	23951	65896

Government of India.

ALL INDIA TABLES

IX. ROADS (IN K. M.) IN VARIOUS STATES OF INDIA IN RELATION TO
AREA AND POPULATION AS ON 31-3-1962.

State	Per 100 Sq. K.M. of area Per lakh of population						
	Surfaced Roads	Un-sur-faced roads	All Roads	Surfaced Roads	Un-sur-faced Roads	All Roads	
1	2	3	4	5	6	7	
Andhra Pradesh	9.95	11.18	21.13	74.03	85.29	159.32	
Assam	3.11	22.98	26.09	30.58	230.14	260.72	
Bihar	7.45	39.14	46.59	27.36	143.23	170.59	
Gujarat	6.84	7.45	14.29	59.55	67.59	127.14	
Jammu & Kashmir	1.24	3.72	4.96	64.37	246.23	310.60	
Kerala	20.50	30.43	50.93	46.67	67.59	114.26	
Madhya Pradesh	5.58	5.58	11.16	70.81	74.03	144.84	

Madras	24.22	19.88	44.10	91.73	75.64	167.37
Maharashtra	8.08	9.32	17.40	62.76	70.81	133.57
Mysore	14.29	19.26	33.55	112.65	154.50	267.15
Orissa	4.97	15.53	20.50	45.06	135.18	180.24
Punjab	8.71	18.01	26.72	53.11	101.39	154.50
Rajasthan	4.35	6.84	11.19	69.20	119.09	188.29
Uttar Pradesh	7.45	27.33	34.78	27.36	107.82	135.18
West Bengal	15.53	59.01	74.54	38.62	143.23	181.85
India	7.45	15.53	22.98	54.72	111.04	165.76

Source: Ministry of Transport (Road wing) Government of India.

ALL INDIA

X. DIFFERENT TYPES OF MOTOR VEHICLES

State	Motor Cycles	Auto-Rickshaws	Jeeps
Andhra Pradesh	7557	137	3905
Assam	1110	19	1875
Bihar	4233	26	3811
Gujarat	8934	1161	2937
Jammu & Kashmir	443	8	264
Kerala	2798	151	1451
Madhya Pradesh	4847	101	3242
Madras	8859	647	1739
Maharashtra	14887	404	3635
Mysore	7494	732	2110
Orissa	1447	..	2255
Punjab	7209	594	1140
Rajasthan	2598	69	1030
Uttar Pradesh	9021	28	3756
West Bengal	10794	89	5000
India	107619	7821	39422

Source: Ministry of Transport and Communication.

TABLES

ON ROADS IN STATES IN INDIA (1962)

Private Motor Car	Motor Cabs	Other Public Service Vehicles	Goods Vehicles	Miscellaneous Vehicles	Total
18196	738	5969	12404	4520	53426
7841	475	1296	8463	4942	26021
8240	800	1981	7878	931	27900
14581	714	2458	13131	4072	47988
891	133	617	2428	25	4809
13249	3031	3626	6793	361	31460
10076	437	3956	12393	4191	32243
24134	2248	3779	11192	2051	56649
51668	7320	4636	29426	3130	115106
14425	833	5385	13244	2996	47219
3261	33	852	5256	698	13802
6181	573	2930	7495	2374	28496
9867	259	4582	7846	2780	29031
16540	334	7448	15875	1765	54767
57460	5000	4830	26280	5643	115096
274868	25037	58312	185905	40788	739772

Government of India.

ALL INDIA TABLES
XI. STATE-WISE DISTRIBUTION OF INDIAN COMMERCIAL BANKS 1964

States	Scheduled Bank		Non-Scheduled Banks	
	No. of Banks	Paid up capital ves	No. of Offices	No. of Paid up Banks capital
Andhra Pradesh	2	93	74	395
Assam	53
Bihar	2	55	49	200
Gujarat	2	300	307	448
Jammu & Kashmir	14
Kerala	3	126	56	375
Madhya Pradesh	2	60	59	223
Madras	9	251	257	751
Maharashtra	9	1187	1325	717
Mysore	11	390	322	532
Nagaland	1
Orissa	66
Punjab	3	57	54	360
Rajasthan	2	93	37	226
Utter Pradesh	3	141	22	507
West Bengal	5	1244	1281	272
India	53	3997	3843	5140

Total

Non-Scheduled
Banks

States

States	Reser- ves	No. of Offices	No. of Banks	Paid up capital	Reser- ves	No. of Offices
Andhra Pradesh	2	93	74	395
Assam	2	5	1	12	2	58
Bihar	2	2	4	56	51	202
Gujarat	2	300	307	448
Jammu & Kashmir	6	13	1	8	6	27
Kerala	44	140	21	188	100	515
Madhya Pradesh	1	2	3	61	60	225
Madras	43	116	43	305	300	867
Maharashtra	4	10	13	1199	1329	727
Mysore	2	8	14	393	324	540
Nagaland	1
Orissa	17	11	7	68	72	66
Punjab	34	1	3	113	71	371
Rajasthan	6	12	9	152	29	227
Utter Pradesh	1	4	9	1247	1582	519
West Bengal	162	324	132	4195	4307	276
India						5464

• Source: Statistical Tables relating to Banks in India—Reserve Bank of India.

ALL INDIA TABLES

XII. CO-OPERATIVE SOCIETIES—NUMBER AND WORKING CAPITAL AT THE END OF 1962-63 BY STATE

(Amount in lakhs of rupees)

States	Number of societies	Total	Share capital paid up	Reserve and other funds
1	2	3	4	5
Andhra Pradesh	28430	16064	2391	1133
Assam	9296	1743	265	80
Bihar	32185	3383	616	269
Gujarat	15233	20486	3344	1549
Jammu & Kashmir	1495	616	85	24

Kerala	7763	4131	823	293
Madhya Pradesh	23795	10282	1322	589
Madras	20696	23090	3123	1800
Maharashtra	34863	39995	7603	2771
Mysore	15882	12712	2274	1068
Orissa	11909	3924	600	207
Punjab	35291	8817	1893	494
Rajasthan	18886	3375	798	102
Uttar Pradesh	67012	18531	3512	1498
West Bengal	18500	7526	1137	750
India	341236	174675	29786	12627

Working capital

Loans from

States	Central financing agencies	Reserve Bank	Government	Other sources
	6	7	8	9
Andhra Pradesh	6035	1795	826	951
Assam	422	..	177	146
Bihar	583	72	564	255
Gujarat	4388	1199	665	2657
Jammu & Kashmir	199	23	67	152
Kerala	1240	319	301	238
Madhya Pradesh	4026	1125	1015	300

Madras	8371	2790	890	1033
Maharashtra	1267	2226	835	3326
Mysore	3937	933	707	749
Orissa	1141	281	414	371
Punjab	2697	773	280	701
Rajasthan	1214	418	192	163
Uttar Pradesh	5919	1584	1311	1055
West Bengal	1091	316	340	197
India	52500	13854	8584	12295

States	Deposits from			Popula- tion in Millions	Average working capital (in rupees) per head of popula- tion.
	(10)	(11)	(12)		
		Central Primary societies	Indivi- duals & other sources	(13)	(14)
Andhra Pradesh	202	400	2331	37.21	43.17
Assam	14	82	557	12.53	13.91
Bihar	2	334	686	48.43	6.98
Gujarat	747	1174	4765	21.80	93.97
Jammu & Kashmir	6	24	35	3.64	16.93
Kerala	100	246	601	17.84	23.16

Madhya Pradesh	294	444	1167	34.04	30.21
Madras	369	1244	3470	34.57	66.79
Maharashtra	10	3340	8616	41.54	96.28
Mysore	373	651	2019	24.68	51.51
Orissa	10	344	556	18.30	21.44
Punjab	163	197	1619	21.42	41.16
Rajasthan	47	143	298	21.28	15.86
Uttar Pradesh	1317	353	1981	76.41	24.25
West Bengal	88	216	3393	36.83	20.44
India	3472	9192	32093	450.52	566.06

Source: Statistical statements relating to co-operative movement in India, Reserve Bank of India.

ALL INDIA

XIII. CONSUMER PRICE INDEX NUMBERS—

Centre	State	1951-52
All India	..	105
Ahamedabad	Gujarat	104
Ajmir	Rajasthan	111
Bangalore	Mysore	115
Bombay	Maharashtra	107
Calcutta	W. Bengal	106
Cuttack	Orissa	124
Delhi	Delhi	108
Gauhati	Assam	113
Hyderabad city	A. Pradesh	109
Jabalpur	M. Pradesh	111
Jam'pur	Bihar	116
Kanpur	U. Pradesh	94
Ludhiana	Punjab	100
Madras city	Madras	104
Nagpur	Maharashtra	104
Sholapur	Maharashtra	106
Trichur	Kerala	106

Source: Reserve Bank of India Bulletin October 1965.

TABLES

WORKING CLASS (YEAR=1949-100)

1955-56	1960-61	1961-62	1962-63	1963-64	1964-65
96	124	127	131	137	157
89	120	121	121
85	109	114	114	122	137
104	147	151	154
110	137	142	145	150	172
93	113	115	121
100	128	134	142	151	178
100	121	128	130	137	153
87	104	107	112	112	128
100	133	138	142
90	109	115	133	143	160
99	120	125	130
79	100	103	106
85	103	106	112	119	131
100	146	149	150	153	177
98	135	132	133	145	182
85	120	118	130	128	157
107	132	136	137	146	164

ALL INDIA TABLES

XIV. INDEX NUMBERS OF WHOLESALE PRICES (BASE 1950-51—100)

Items	1956-57	1960-61	1961-62	1962-63	1963-64
1. Food Articles	90.9	106.7	106.8	112.1	121.6
2. Liquor and Tobacco	85.7	111.7	101.9	102.5	121.5
3. Fuel, Power, Light and Lubricants	112.5	129.6	131.9	134.3	150.5
4. Industrial Raw Materials	88.6	111.1	108.9	104.3	106.6

Item	1956-57	1960-61	1961-62	1962-63	1963-64
5. Manufactured articles	102.9	119.9	122.6	124.7	126.9
1. Intermediate products	98.7	116.2	123.5	124.1	124.2
2. Finished products	103.7	120.6	122.4	124.9	127.4
6. General Index	94.2	111.7	111.9	114.4	121.0

Source: Planning Commission, Basic Statistics relating to Indian Economy

XV. THIRD PLAN OUTLAY OF

State	1961-62 Accounts	1962-63 Accounts
Andhra Pradesh	50	53
Assam	17	25
Bihar	50	53
Gujarat	34	46
Jammu & Kashmir	10	12
Kerala	26	30
Madhya Pradesh	36	48
Madras	50	59
Maharashtra	56	59
Mysore	45	48
Orissa	23	33
Punjab	36	40
Rajasthan	34	38
Uttar Pradesh	70	77
West Bengal	39	50
Total	576	671

Source: Reserve Bank of India Bulletin.

1150

(Rs. in C

1964-65 R.E.	1965-66 B.E.	Total 1961-62 to 1965-66	Sta Targ for Pl
79	100	346	
31	31	133	
75	78	318	
56	58	242	
14	22	67	
40	42	173	
66	66	279	
78	79	337	
106	138	438	
54	56	256	
64	58	226	
61	62	244	
48	47	204	230
141	141	524	497
67 75	75	306	250
805 988	1053	4093	3922

1 Mile	1.609344 Kilometres
1 Sq. mile	2.58999 Sq. Kilometres
1 Acre	0.404686 Hectare
1 Ton	1.01605 Metric tonnes
1 Pound	0.4535924 Kilogram
1 Gallon	4.54596 Litres