



DISTRICT
STATISTICAL HAND BOOK

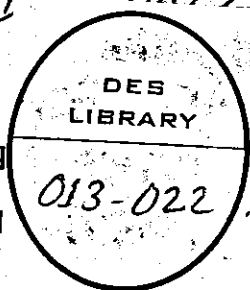
• ALLEPPEY

1966

ISSUED BY

The Bureau of Economics & Statistics,
Government of Kerala,
Trivandrum.

DISTRICT
STATISTICAL HA
ALLEPPEY



Issued by

The Bureau of Economics & Statistics

Kerala

1971

P R E F A C E

"The District Statistical Handbook, Alleppey 1966" is the third in a series of nine District Statistical Handbooks proposed to be brought out by this Bureau.

Data collected at the District level under the supervision of Shri K. P. Mohammed Sally, District Statistical Officer, Alleppey, and the data available in the various publications of this Bureau and in the Administration Reports of sister Departments have been made use of for this publication.

The publication has been prepared by Shri C. R. Parameswaran, Research Officer and the staff of the Publication Section, under the guidance of Shri P. P. Philipose, Deputy Director.

It is hoped that the issue of the District Statistical Handbooks may go a long way in filling up the gaps in the availability of District-wise statistical information.

Suggestions for the improvement of the publication are welcome.

Dr. P. K. GOPALAKRISHNAN,
Director,
Bureau of Economics & Statistics.

Trivandrum,
29-3-1968.

CONTENTS

- A - Alleppey District
- B - Alleppey district at a glance
and comparison with Kerala
- C - Tables

Section I. Area and Population

Table No.	PAGE
1.1 (a) Area and Population	24
1.1 (b) Rural and Urban population	26
1.2 Population by natural regions	28
1.3 (a) Growth rate of population	29
1.3 (b) Taluk wise growth of population	30
1.4 Variation of Rural & Urban population	34
1.5 Rate of population growth compared with adjacent districts	35
1.6 Density of population by taluks	36
1.7 Density of population by natural regions	37

	PAGE
1.8	Sex-wise break up of rural and urban population 38
1.9	Sex ratio (1901-61) 39
1.10	Sex ratio by natural regions 40
1.11	Percentage distribution of population by age groups 42
1.12	Population by broad age groups—percentage distribution 44
1.13	Distribution of persons by marital status 46
1.14	Population by religion 48
1.15	Population by mother tongue 50
1.16	Trend of population growth 52
1.17	Workers and non-workers by sex 54
1.18	Distribution of 1000 persons into workers and non-workers 56
1.19	Scheduled castes and Scheduled tribes 57
1.20	Towns and villages 58
1.21	Area and population of Municipalities 59
1.22	Population estimates for 1961 to 1966 60

	PAGE	
1.23	Sex ratio by industrial classification	62
1.24	Sex ratio by age group	64
1.25	Sex ratio by religion	65
1.26	Percentage distribution of population by marital status	66
1.27	Persons not at work by sex and type of activity	68
1.28	District wise area and population of Kerala	70
Section II.	Rainfall	72
2.1	Average annual rainfall at rain recording centres	73
2.2	Average monthly rainfall	74
2.3	Average annual rainfall of the District and State	75
Section III.	Agriculture	76
3.1	Classification of area	78
3.2	Area under important crops	80
3.3	Production of important crops	82
3.4	Index numbers of Agricultural production	84

	PAGE •
3.5	Estimated mean yield of paddy 86
3.6	Classification of soil 88
3.7	Paddy seed farms and research stations 89
3.8	Important markets for Agricultural Commodities 90
3.9	Agricultural implements 92
3.10	Agricultural labourers 94
Section IV.	Live stock and Veterinary 95
4.1	Live stock population 96
4.2	Veterinary hospitals and dispensaries 98
4.3	Live stock treated in veterinary institutions 100
4.4	Live stock slaughtered in Municipalities 102
Section V.	Forest 104
5.1	Area of forest 105
Section VI.	Electricity 106
6.1	Number of consumers of electricity 107

	PAGE
7.13 Taluk wise distribution of 1000 persons by sectors of industry	130
Section VIII. Registration	131
8.1 Registration of documents	132
8.2 Category and value of docu- ments registered	134
8.3 Book-war details of registra- tion	136
Section IX. Law and order	137
9.1 Police stations and out posts	138
9.2 Sanctioned strength of civil police	140
9.3 Serious crimes in the District	142
9.4 Trend of cognizable offences	144
9.5 Value of property stolen and recovered	146
Section X. Education	147
10.1 Number of literates	148
10.2 Growth of literacy-Percentage	150

	PAGE
10.3	Proportion of literates 152
10.4	Distribution of schools 154
10.5	Strength in primary classes by sex 156
10.6	Strength in U. P. classes by sex 158
10.7	Strength in high schools by sex 160
10.8	Details of pupils and schools in pre-primary section 162
10.9	Pupils benefitted by 'Care' feeding 164
10.10	Distribution of teachers 166
10.11	Number of Hindi, Malayalam, Sanskrit and Arabic Teachers 170
10.12	Pupils studying in T.T.C. 172
10.13	Schools working in sessional system 174
10.14	List of schools with hostel facilities 176
10.15	Colleges for general education 178
10.16	Colleges for professional education 182

	PAGE
Section XI. Medical and public health	184
11.1 Medical institutions and beds	185
11.2 Patients treated in major hospitals	186
11.3 Inpatients treated in Ayurvedic Hospitals	188
11.4 Outpatients treated in Ayurvedic and Homeopathic Hospitals	190
11.5 Patients treated in Ayurvedic dispensaries	192
11.6 Patients treated in homeopathic dispensaries	194
11.7 Patients treated in grant-in-aid Ayurvedic dispensaries	195
11.8 Working of grant in aid vishavydyasalas	196
11.9 Sterilised persons according to religion	197
11.10 Sterilised persons according to age and sex	198

	PAGE
Section XII. Transport and communication	200
12.1 Length of roads	202
12.2 Length of railways	204
12.3 No. and kind of motor vehicles	205
12.4 Operation of Road transport corporation buses	206
12.5 Fleet Utilisation of Road transport corporation	207
12.6 Passengers carried and distance travelled	208
12.7 No. of post and telegraph offices	210
12.8 Taluk wise statement of telephones	211
Section XIII. Prices	212
13.1 Consumer price index numbers of Alleppey and Shertallai	214
13.2 Consumer price index numbers compared to neighbouring centres	216
13.3 (a) Monthly average retail prices of Alleppey Centre-1965	218

	PAGE
13.3 (b) Monthly average retail prices of Shertallai Centre-'65	222
13.4 (a) do Alleppey Centre-'66	226
13.4 (b) do Shertallai Centre-'66	230
Section XIV. Joint Stock Companies	235
14.1 Joint stock companies at work as on 31-3-1964	236
14.2 do do 31-3-1965	238
14.3 do do 31-3-1966	240
Section XV. Local Bodies and Cooper- ation	242
15.1 Panchayats and Population	243
15.2 Income of Panchayats	244
15.3 Expenditure of Panchayats	246
15.4 Blocks-general information	248
15.5 Blocks and Panchayats	250
15.6 Income of Municipalities	256
15.7 Expenditure of Municipalities	258
15.8 Cooperative Societies, Member- ship, share capital and working capital	260

	PAGE
15.9	Loans issued by Agricultural credit societies 266
15.10	Working of Harijan Societies 268
15.11	Harijan Societies—Loans issued 270
15.12	Working of milk supplies societies 272
Section XVI. Excise 275	
16.1	Toddy shops, area and population 274
16.2	Trees tapped and tree tax collected 276
16.3	Arrack shops and quantity of arrack issued 278
16.4	Licence fee on foregin liquors 280
16.5	D. C. B of abkari revenue under arrack 282
16.6	Excise duty on arrack and cocobrandy 284
16.7	D. C. B of abkari revenue under toddy 286
16.8	D. C. B of abkari revenue under tree tax 288

	PAGE
16.9 Particulars of rentals obtained in the auction sale of abkari shops	290
Section XVII. Sales Tax	293
17.1 Dealers registered under general sales tax act	294
17.2 Particulars of non-assessees	296
17.3 Notices issued under Agricultural Income Tax	298
17.4 Miscellaneous receipt under central sales tax	300
17.5 Year wise break up of arrears under sales tax	302
17.6 Year wise-break up of arrears under Agricultural Income Tax	304
Section XVIII. Housing	307
18.1 No. of occupied residential houses	308
18.2 Variation of occupied census houses	310
18.3 No. of persons per 1000 occu- pied house	312

	PAGE
18.4	Persons per occupied census house 313
18.5	Census houses by categories 314
18.6	Thousand households according to tenure of status 318
18.7	Thousand households by material of wall 320
18.8	Thousand households by material of roof 322
18.9	Thousand households by No. of rooms occupied 324
18.10	No. of persons per room and per household 325
18.11	No. of occupied residential houses per Sq. K. M. for the District and State from 1901 onwards 326

Section XIX. Miscellaneous

19.1 (a)	Loan applications received, sanctioned and amount disbursed by Kerala financial corporation 327
----------	---

	PAGE
19.1 (b) Loan applications received, sanctioned and amount disbursed by Kerala financial corporation from agency funds	328
19.2 Small savings collection	330
19.3 Printing presses and periodicals	332
19.4 Libraries and reading rooms	335
19.5 Third five year plan-financial achievements	336
19.6 D. C. B of various taxes for 1964-65 and 1965-66	338
19.7 Details of Thandapers	340
19.8 Receipt and disposal of applications under various schemes of social benefit	342
Conversion table	344

A. ALLEPPEY DISTRICT

Alleppey district comprising of seven taluks divided into 99 villages was carved out of Quilon and Kottayam districts and was born on 17th August 1967. Bounded on the North and North East by Ernakulam and Kottayam districts respectively, on the east and on the south east by Quilon District and on the west by Arabian Sea, this District lies between North latitude $9^{\circ} 05'$ and $9^{\circ} 52'$ and East longitude $76^{\circ} 17'$ and $76^{\circ} 48'$.

Alleppey District with an area of 708.07 Sq. miles or 1833.89 Sq. K. M. ranks last among the nine districts of Kerala in respect of area, but stands foremost in regard to density of population. The entire area of the district lies in low land and midland divisions, and is the only district in Kerala having no area under high lands.

The climate is moist and hot in the coast, and it is slightly cooler and drier in the interior of the district. The average monthly temperature of this district varies approximately between 18°c . and 36°c . As in other parts of the State this district also gets the benefit of two outstanding monsoons.

The soil of this district may be classified as sandy, peaty, alluvial and laterite. Sandy soil covers the western portion of Sherthallai, Ambala-

puzha and Karthikappally taluks. Coconut is mostly grown in this area. Peaty and kari soil occurs as a small belt on the eastern regions of Sherthallai and Ambalapuzha and on the western portions of Kuttanad. This soil is noted for its poor fertility and low yields. To the east of the peaty soil lies the alluvial soil which covers the residuary portion of Kuttanad, northern portion of Karthikappally, western region of Thiruvalla, Chengannoor, and the north western sector of Mavelikkara. The alluvial soil is heavy in texture consists mostly of fine silt and is generally well supplied with organic matter, nitrogen and potash. Major portions of Thiruvalla, Chengannur and Mavelikkara taluks are covered by laterite soil which is formed by weathering mainly of acidic rocks under alternate wet and dry tropical conditions.

There is no considerable area under forest in this district. A small portion of Valiakavu reserve in Ranny range lies in Perumpetty village of Thiruvella taluk.

For administrative purposes this district is divided into seven taluks of Ambalapuzha, Chengannoor, Karthikappally, Kuttanad, Mavelikkara, Sherthallai and Thiruvalla. The biggest taluk is Thiruvella with an area of 344.2 Sq. K. M. and the smallest is Ambalapuzha with only 178.7 Sq. K. M.

There are five municipalities in this district. They are Kayamkulam, Alleppey, Mavelikkara, Thiruvella and Sherthallai. The 94 panchayats of the district come within the purview of 17 blocks.

The population of the district according to 1961 census was 18.11 lakhs which is only 10.71 percent of the State population of 169.04 lakhs. During the past few decades beginning with 1901, the population of the district has increased by 170.99 percent, while the proportionate increase in the adjoining districts of Ernakulam, Kottayam and Quilon were 177.96, 264.49 and 270.89 respectively.

The density of the district in 1961 was as high as 988 persons per Sq. K. M. while that of the State was only 435. Ambalapuzha taluk tops the list with the highest density of 1511 persons per Sq. K. M, followed by Karthikappally with 1212 persons, while the least densely populated taluk is Thiruvalla with a density of only 888 persons per Sq. K. M.

The sex ratio of this district has gone up steadily. In 1901 it was 986 and in 1961 it rose upto 1027. Karthikappally and Mavelikkara are the two taluks which have got the highest sex ratio.

The percentage of literacy in this district is higher than that of the State. According to 1961

census 56.86% of the population of this district are literates, while the corresponding figure for the State was only 46.9%, 63.79% of the male population and 50.12% of the female population of this district are literates.

The working force of this district constitute 33.70% of the total population of the district while 33.31% of the State population are workers. 45.64% of the male population and 22.08% of the female population are workers as against the State percentage of 46.05 and 16.04 respectively according to 1961 census.

Out of the total population of this district 9.20% are scheduled castes and 0.32% scheduled tribe. Mavelikkara taluk has got the highest number of scheduled castes (39382) and Thiruvalla taluk the highest number of scheduled tribe (307).

The net area sown was 161647 hectares for the year ending June 1966; it was estimated that the area under rice was 81603 hectares and the production 92600 tonnes. Sugarcane, tapioca and coconut are the other important crops of this district.

There are 10 Government allopathic and 6 Government Ayurvedic hospitals in this district with a combined bed strength of 2271. In addition to this, 20 primary health centres, 17 allopathic

dispensaries and 26 Ayurvedic dispensaries are also located in various parts of this district.

In 1965 there were 281 registered working factories (as against 2820 in the State) which engaged 13488 workers (as against 195456 of the State). The most important industries of this district are the manufacture of coir and coir products, production of copra, extraction of oil, processing of arecanut, cashewnut etc.

Three important rivers which flow through this district are Manimala, Pamba and Achencoil rivers. The villages of Manimala, Mallappally, Kaviyoor, Kalloopara, Thiruvalla, Thalavadi, Kozhimukku and Champakulam lie in the course of Manimala river, which has a length of 57 miles or 91.73 K. M. and drainage area of 310 Sq. miles or 802.90 Sq. K. M.

The Pamba river which has its origin at Peerumedu touches this district at Thoctapuzhasserri, and after traversing a distance of 110 miles or 177.03 K. M. empties itself at Vembanad lake through several branches. The catchment area of this river is 763 Sq. Miles or 1976.17 Sq. K. M. and has a navigable length of 46 miles or 74.02 K. M.

The Achancoil river on entering this district at about three miles from the west of Kaipattoor

adopts a westerly course of flow till it reaches Chennithala. After that it takes a south westerly course and joins as a tributary to Pamba at Veeyapuram. The catchment area of this river is 446 Sq. miles or 1155.14 Sq. K. M. and has a navigable length of 20 miles or 32.19 K. M.

The Vembanad lake stretching from Alleppey to Cochin borders Sherthallai, Ambalapuzha and Kuttanad taluks of this district.

The railway line opened on 17th October 1958 traverses through Thiruvalla. Chengannoor, Mavelikkara and Karthikapally taluks of this district. The extreme stations of this district are Thiruvella and Kayamkulam. The commercial canals connecting each nook and corner of this district are its life line. Canals, rivers and back waters afford an easy and cheap mode of transport of goods which was one of the main reasons for the importance of Alleppey town as the major commercial centre of olden times.

The credit for development of roads in this district goes back to the period of Rama Iyer Delva, the Devan of Travancore who opened several roads for the convenience of militia chiefly, and for goods traffic and passengers as well. With the appointment of Barton as the Chief Engineer during the time of Devan Madha Rao, remarkable progress in the field of expansion of roads was

made and with the opening of Alleppey, Changanassery road in 1958 this district has a net work of good motorable roads.

The National Highway enters this District at Aroor and after traversing for a distance of 97.77 K. M. leaves the district at Krishnapuram. Krishnapuram,— Chengannur, Karthikappally—Achencoil, Haripad—Pathanapuram, Alleppey, Changanassery are the other important road routes of this district. During the year 1963-64 the length of roads maintained by the P. W. D. was 1384 K. Ms. and that maintained by other agencies like Municipality, Irrigation Department etc. was 1646 K. Ms.

Alleppey port is an intermediate port in the West coast of Kerala. It was the first commercial port in the erstwhile Princely State of Travancore, but with the advent and improvement of Cochin as an international all weather port the importance of Alleppey Port dwindled.

B. ALLEPPEY DISTRICT AT A GLANCE

Sl. No.	Item	Unit
1	2	3
<i>O General</i>		
0.1	Area	Sq. K.M.
0.2	Length of Coast line	K.M.
0.3	Number of rivers	No
0.4	Number of districts	"
0.5	Number of Taluks	"
0.6	Number of revenue villages	"
0.7	No. of Panchayats	"
0.8	No. of Municipalities	"
0.9	No. of Blocks	"
0.10	Location—North latitude	..
0.11	Do. East longitude	..
<i>I Population</i>		
1.1	Total population	lakhs
1.2	Males	"
1.3	Females	"
1.4	Rural Population	"
1.5	Percentage of Rural population to total population	%

AND COMPARISON WITH KERALA

Reference period	Alleppey District	Kerala State	Comparison of Alleppey District with Kerala (%)
4	5	6	7
1966	1834	38855	4.7
"	78.9	580	13.60
"	3	44	..
"	1	9	..
"	7	55	..
"	99	1635	..
"	94	921	..
"	5	28	..
"	17	144	..
"	9° 05' & 9° 52'	8° 18' & 12° 48'	
"	76° 17' 76° 48'	74° 52' & 77° 22'	
1961	18.11	169.03	10.71
"	8.93	83.62	10.68
"	9.18	85.41	10.75
"	15.00	143.49	10.45
"	82.83	84.89	..

1	2	3
1.6	Urban population	lakhs
1.7	Percentage of urban population to total population	%
1.8	Population of secheduled caste *	lakhs
1.9	Population of Sch. Tribe *	lakhs
1.10	Total workers	"
1.11	% of Total workers to total population	%
1.12	Non workers	lakhs
1.13	% of non workers to total population	%
1.14	Total male workers	lakhs
1.15	Total female workers	"
1.16	Density of population	Persons
1.17	Total literates	lakhs
1.18	Male literates	"
1.19	Female literates	"
1.20	Total Hindus	"
1.21	Total Christians	lakhs
1.22	Total Muslims	"
1.23	Sex ratio	Females per 1000 males
1.24	Sex ratio of Hindus	"
1.25	Sex ratio of Muslims	"
1.26	Sex ratio of Christians	"

Provisional *

(4)	(5)	(6)	(7)
1961	3.11	25.54	12.18
"	17.17	15.11	..
"	1.66	14.22	11.67
"	0.0058	2.07	0.28
"	6.11	56.30	10.85
"	33.74	33.31	..
"	12.00	112.73	10.64
"	66.26	66.69	..
"	4.08	39.47	10.34
"	2.03	16.83	12.06
"	988	435	..
"	10.29	79.19	12.99
"	5.70	45.96	12.40
"	4.59	33.23	13.81
"	11.85	102.82	11.52
"	5.15	35.87	14.36
"	1.10	30.27	3.63
"	1027	1022	...
"	1039	1028	...
"	982	1032	...
"	1011	995	...

1	2	3
1.27	% of never married persons to total population	%
1.28	% of married persons to total population	"
1.29	% of widowed persons to total population	"
1.30	% of divorced or separated persons to total population	"
1.31	Growth of Population	%
1.32	Growth of population	"
1.33	Estimated population	lakhs

II. Agriculture

2.1	Area according to village papers	Sq. K.M.
2.2	Area under forests	Hectare
2.3	Total cropped area	Hectare
2.4	Area under rice	"
2.5	„ Tapioca	"
2.6	„ Coconut	"
2.7	„ Bananas	"
2.8	Out turn of rice	"
2.9	do of coconut	M.T
		Million
2.10	do of banana	nuts
2.11	do of Tapioca	Tonnes
2.12	Tractors (Govt. and private)	M.T.
		No

4	5	6	7
1961	57.27	56.67	...
„	35.31	35.84	...
„	6.07	5.92	...
„	1.35	1.54	...
1951-61	19.06	24.76	...
1901-61	170.99	164.27	...
1966	20.58	191.37	...
1966	1834	38855	4.7
„	513	1055076	0.05
„	222282	2551344	8.71
„	81603	802329	10.17
„	23035	229684	10.03
„	75599	586313	12.89
„	3121	45199	6.91
„	92600	997489	9.28
„	505	3293	15.34
„	5053	77421	6.53
„	349211	3095658	11.28
„	57	418	13.64

1	2	3
2.13	Oil Engines with Pump for irrigation	No:
2.14	Carts	"
2.15	Sugarcane crushers (Power)	"
2.16	Ploughs (wooden)	"
2.17	Ploughs (iron)	"
2.18	Electric pump for irrigation	"

III Veterinary

3.1	Number of veterinary Hospitals	"
3.2	No. of veterinary dispensaries	"
3.3	Total live stock	lakhs
3.4	Total Poultry	"

IV Industries & Labour

4.1	Registered working factories	No
4.2	Employment in working Factories	"
4.3	No. of cultivators	"
4.4	No. of Agricultural labourers	"
4.5	Persons engaged in mining, quarrying, fishing etc.,	"
4.6	Persons engaged in manufacture	"
4.7	do in construction	"
4.8	do in trade & commerce	"
4.9	do in transport	"
4.10	do in other services	"

4	5	6	7
1966	441	6824	6.46
"	911	16309	5.59
"	63	457	13.79
"	18235	475930	3.83
"	3329	17179	19.38
"	405	4869	8.32
66-67	6	63	9.68
"	21	178	11.78
"	4.23	46.41	9.11
1966	11.40	99.08	11.51
1965	281	2820	9.96
"	13488	195456	6.90
1961	109566	1178103	9.30
"	116834	978386	11.94
"	35108	487359	7.20
"	56114	529472	10.60
"	5913	70702	8.36
"	36434	321933	11.32
"	17769	152513	11.65
"	128333	1423293	9.02

1	2	3
4.11	Persons engaged in household industry	No.
<i>V Electricity</i>		
5.1	No. of Consumer of Electricity	"
<i>VI. Joint Stock Companies</i>		
6.1	No. of Companies	"
6.2	No. of Public Companies	No.
6.3	No. of Private Companies	No.
<i>Medical and Public Health</i>		
7.1	No. of Allopathic Hospital	No.
7.2	No. of Allopathic Dispensaries	"
7.3	No. of Ayurvedic Hospitals	"
7.4	No. of Ayurvedic Dispensaries	"
7.5	No. of beds (Allopathic and Ayurvedic)	"
<i>VIII. Transport and Communication</i>		
8.1	No. of Motor Vehicles	"
8.2	No. of Railway length	K.M.
8.3	No. of Telephones	No.

4	5	6	7
1961	104353	488562	21.36
1965-66	36052	314111	11.48
"	105	1010	10.40
"	46	379	12.14
"	59	631	9.35
1965-66	10	101	9.90
"	38	390	9.74
"	6	45	13.33
"	26	219	11.87
"	2271	19417	11.70
"	3133	44390	7.06
"	...	888	...
"	N. A.	23253	...

1	2	3
8.4	No. of Nationalised routes	No.
8.5	Passengers carried (Road Transport Corporation)	lakhs

IX Police and Crime

9.1	No. of murders	No
9.2	No. of house breaking	"
9.3	No. of cattle thefts	"
9.4	No. of ordinary thefts	"
9.5	No. of Cognizable offences	"

X Registration

10.1	No. of Sub Registry offices	No
10.2	No. of documents registered	"
10.3	Value of documents registered	Rs. in lakhs
10.4	Mortgages registered	No
10.5	Sales deeds registered	"
10.6	Wills registered	"
10.7	Money bonds registered	"

XI Employment Exchange

11.1	Candidates on the Live register	"
------	---------------------------------	---

4	5	6	7
1965-66	32	600	5.33
"	17.26	1585.29	1.09
1965	16	267	5.99
"	162	2259	7.17
"	8	125	6.4
"	216	2914	7.41
1964	1127	13791	8.17
1965-66	19	207	9.18
"	91242	747872	12.20
"	746.36	8501.36	8.78
"	29400	188437	15.60
"	25830	209494	12.33
1965-66	373	5564	6.70
"	253	15303	1.65
as on 31-12-66	12948	157156	8.24

1	2	3
---	---	---

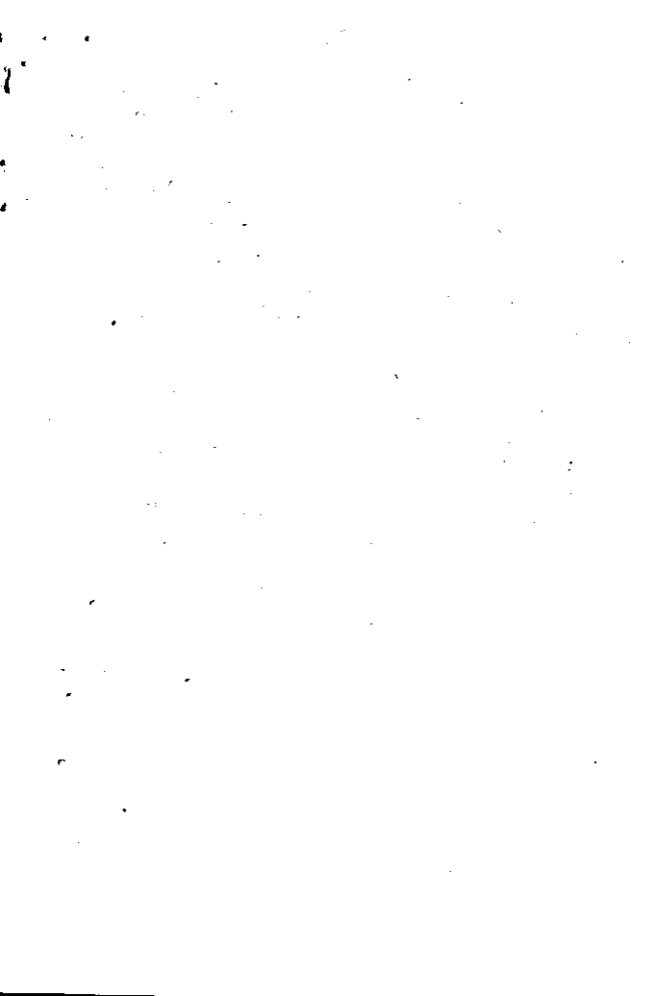
XII Education

12.1	No. of Libraries and Rerading rooms	No.
12.2	No. of Schools	"
12.3	No. of teachers	"
12.4	No. of students in primary section	"
12.5	No. of Students in middle section	"
12.6	No. in secondary section	"
12.7(a)	No. of colleges for general education including oriental studies	"
12.7(b)	No. of University teaching department	No
12.7(c)	No. of colleges for professional education	"
12.8(a)	No. of scholars in colleges for general education including oriental studies	"
12.8(b)	No. of scholars in university teaching Dept.	"
12.8(c)	do of professional edn.	"
12.11	Percentage of literate to total population	%

4	5	6	7
1965-66	339	2843	11.92
"	1052	10825	9.72
"	14527	125104	11.61
"	269835	2521182	10.70
"	138959	1031511	13.47
"	100438	615143	16.33
"	11	106	10.38
1965-66	...	26	...
"	4	37	10.81
"	11468	103215	11.11
"	...	734	...
"	609	12820	4.75
"	56.86	46.85	...

AREA AND POPULATION

This section deals with the area and population of Alleppey District, and their distribution and characteristics according to 1961 Census. All the important aspects such as sex distribution, density, religion, mother-tongue, rural-urban population etc. have been covered.



AREA AND

Table

AREA AND

Taluk/District	Area	
	Sq. Mile	Sq. K.M.
Ambalapuzha	69.0	178.7
Chengannur	77.7	201.2
Karthigappally	90.6	234.7
Kuttanad	102.7	266.0
Mavelikara	111.5	288.8
Sherthallai	123.7	320.4
Thiruvalla	132.9	344.2
Alleppey District	708.1	1834.0

Source: Superintendent of

POPULATION

I.1 (a)

POPULATION

Population 1961	Density		Sex Ratio (Female per 1000 males)
	Per Sq. Mile	Per Sq. K. M.	
270037	3914	1511	1007
198846	2559	988	1033
284397	3139	1212	1040
169219	1648	636	1022
271601	2436	940	1038
311527	2518	972	1021
305625	2300	888	1030
1811252	2558	988	1027

Census Operations, Kerala.

AREA AND

Table

RURAL & URBAN

Taluk/District	Male Population		
	Rural	Urban	Total
Ambalapuzha	64596	69977	134573
Chengannur	86978	10850	97828
Karthigappally	107442	31998	139440
Kuttanad	83681	...	83681
Mavelikara	119012	14230	133242
Sherthallai	138733	15382	154115
Thiruvalla	138806	11750	150556
Alleppey District	739248	154187	893435

Source: Superintendent of

POPULATION

1.1 (b)

POPULATION (1961 Census)

Female Population			Sex Ratio	
Rural	Urban	Total	Rural	Urban
66607	68857	135464	1031	984
89591	11427	101018	1030	1053
112006	32951	144957	1042	1030
85538	...	85538	1022
123615	14744	138359	1039	1036
141639	15773	157412	1021	1025
142577	12492	155069	1027	1063
761573	156244	917817	1030	1013

Census Operations, Kerala

AREA AND POPULATION

Table: 1.2

POPULATION BY NATURAL REGIONS (1961)

Taluk/District	Mid-land		Low land	
	Actual	Percentage	Actual	Percentage
Ambalapuzha	270037	21.67
Chengannur	109459	19.37	89387	7.17
Karthigappally	284397	22.82
Kuttanad	169219	13.58
Mavelikara	204218	36.14	67383	5.41
Sherthallai	311527	25.00
Thiruvalla	251371	44.49	54254	4.35
Alleppey District	565048	100.00	1246204	100.00

Source: Superintendent of Census Operations, Kerala.

AREA AND POPULATION

Table: 1.3 (a)

GROWTH RATE OF POPULATION

Taluk/District	Decennial growth rate 1951-61	Percentage increase 1921-1961
Ambalapuzha	+ 22.21	+ 132.34
Chengannur	+ 11.98	+ 85.00
Karthigappally	+ 21.79	+ 90.67
Kuttanad	+ 24.53	+ 145.33
Mavelikara	+ 20.41	+ 92.64
Sherthallai	+ 22.28	+ 92.92
Thiruvalla	+ 11.94	+ 84.96
Alleppey District	+ 19.06	

Suprce; Superintendent of Census Operations,
Kerala.

AREA AND

Table No.

TALUK-WISE GROWTH

Taluk/District	1921			
	Persons varia- tion	% Decade variati- on	Persons .	
1	2	3	4	5
Ambalapuzha				
Taluk	116227	149538
Chengannur	107487	132480
Karthika- ppally	149153	180825
Kuttanad	68976	90290
Mavelikkara	140992	169437
Sherthallai	161481	204474
Thiruvalla	165239	203671
Alleppey District	909555	1130715

Source : Superintendent of

POPULATION

1.3 (b)

OF POPULATION - 1921 TO 1961

Decade varia- tion	1931		1941	
	% Decade varia- tion	Persons	Decade varia- tion	% Decade varia- tion
6	7	8	9	10
+ 33311	+28.66	182795	+ 33257	+22.24
+ 24993	+23.25	144898	+ 12418	+ 9.37
+ 31672	+21.23	194315	+ 13490	+ 7.46
+ 21314	+30.90	111234	+ 20944	+23.20
+ 28445	+20.17	188581	+ 19144	+11.30
+ 42993	+26.62	229429	+ 24955	+12.20
+ 38432	+23.26	222777	+ 19106	+ 9.38
+221160	+24.31	1274029	+143314	+12.67

Census Operations, Kerala

(Contd.)

AREA AND

Table No.

TALUK-WISE GROWTH OF

Taluk / District	1951	
	Persons	Decade variation
1	11	12
Ambalapuzha Taluk	220954	+38159
Chengannur "	177579	+32681
Karthikappally "	233521	+39206
Kuttanad "	135887	+24653
Mavelikara "	225558	+36977
Sherthallai "	254774	+25345
Thiruvalla "	273030	+50253
Alleppey District	1521303	+247274

Source: Superintendent of Census

POPULATION (Contd.)

1.3 (b)

POPULATION—1921 to 1961

% Decade variation	Persons	1961	
		Decade variation	% Decade variation
13	14	15	16
+20.88	270037	+ 49083	+22.21
+22.55	198846	+ 21267	+11.98
+20.18	284397	+ 50876	+21.79
+22.16	169219	+ 33332	+24.53
+19.61	271601	+ 46043	+20.41
+11.05	311527	+ 56753	+22.28
+22.56	305625	+ 32595	+11.94
+19.41	1811252	+289949	+19.06

Operations, Kerala

AREA AND POPULATION
Table: 1.4
VARIATION OF RURAL & URBAN POPULATION

Census Year	Rural		Urban		Total Population	Percentage variation
	Number	Percentage variation	Number	Percentage variation		
1901	637725	...	30663	...	668388	...
1911	727775	+14.12	39464	+28.70	767239	+14.79
1921	821555	+12.89	88000	+122.99	909555	+18.55
1931	1010040	+22.94	120675	+37.13	1130715	+24.32
1941	1131803	+12.06	142226	+17.86	1274029	+12.67
1951	1299255	+14.80	222048	+56.12	1521303	+19.41
1961	1500821	+15.51	310431	+39.80	1811252	+19.06

Source: Superintendent of Census Operations, Kerala

AREA AND POPULATION

Table: 1.5

RATE OF POPULATION GROWTH COMPARED
WITH ADJACENT DISTRICTS

District	Rate of Growth		Average annual growth rate
	1901-61	1951-61	
Alleppey	+170.99	+19.06	+2.85
Ernakulam	+177.96	+21.55	+2.97
Kottayam	+264.49	+30.52	+4.41
Quilon	+270.89	+31.70	+4.51

Source: Superintendent of Census
Operations, Kerala

AREA AND POPULATION

Table: 1.6

DENSITY OF POPULATION (PER SQ. K. M.) BY TALUKS

Taluk/District	1921	1931	1941	1951	1961
Ambalapuzha	650	837	1023	1236	1511
Chengannur	534	658	720	882	988
Karthikappally	634	771	828	995	1212
Kuttanad	259	339	418	511	636
Mavelikara	488	587	653	781	941
Sherthallai	504	638	716	795	972
Thiruvalla	480	592	647	793	888
Alleppey District	496	617	695	829	988

Source: Superintendent of Census Operations, Kerala.

AREA AND POPULATION

Table: 1.7

POPULATION DENSITY (PER SQ. K. M.) BY NATURAL REGIONS (1961)

Taluk/District	Mid Land			Low Land		
	Total	Rural	Urban	Total	Rural	Urban
Ambalapuzha	1511	995	2961
Chengannur	954	842	2000	1033	1033	...
Karthikappally	1212	1086	1990
Kuttanad	636	636	...
Mavelikara	888	872	1379	1146	979	2035
Sherthallai	972	921	1940
Thiruvalla	851	809	1671	1108	1108	...
Alleppey District	883	837	1718	1044	911	2420

Source: Superintendent of Census Operations, Kerala.

AREA AND POPULATION

Table: 1.8

SEX-WISE BREAK UP RURAL URBAN POPULATION (1961)

Taluk/District	Rural			Urban		
	Male	Female	Total	Male	Female	Total
Ambalapuzha	64596	66607	131203	69977	68857	138834
Chengannur	86978	89591	176569	10850	11427	22277
Karthikappally	107442	112006	219448	31998	32951	64949
Kuttanad	83681	85538	169219
Mavelikara	119012	123615	242627	14230	14744	28974
Sherthallai	138733	141639	280372	15382	15773	31155
Thiruvalla	138806	142577	281383	11750	12492	24242
Alleppey District	739248	761573	1500821	154187	156244	310431

Source: Superintendent of Census Operations, Kerala.

AREA AND POPULATION

Table: 1.9

SEX-RATIO (1901 - 1961)

Census Year	Total	Rural	Urban
1901	986	988	958
1911	987	990	934
1921	979	984	931
1931	993	1000	929
1941	1000	1006	953
1951	1019	1025	985
1961	1027	1030	1013

Source : Superintendent of Census Operations,
Kerala.

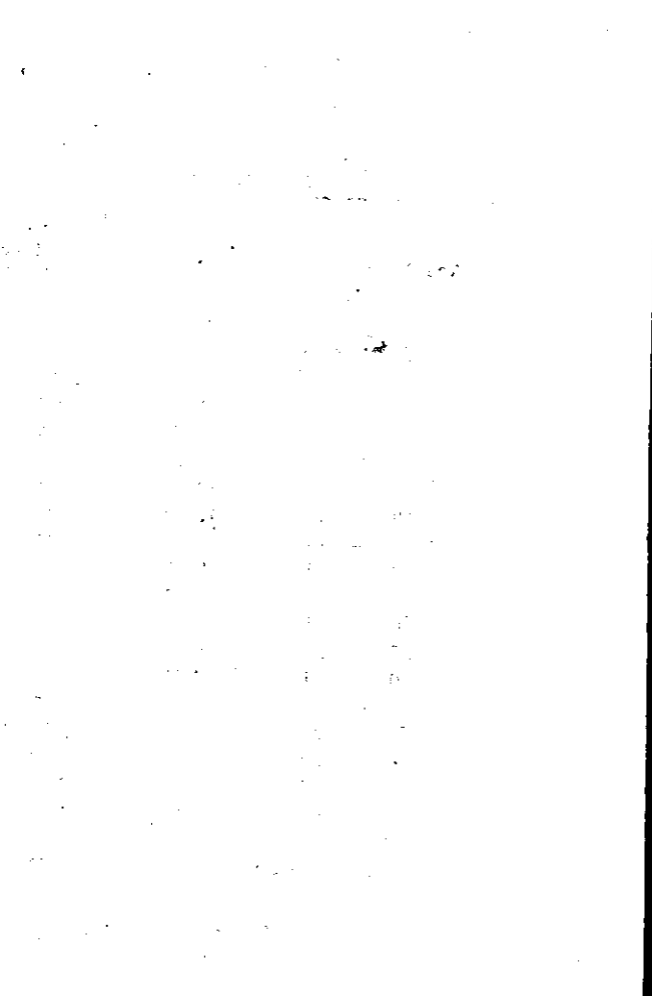
AREA AND POPULATION

Table: 1.10

SEX-RATIO BY NATURAL REGIONS (1961)

Taluk/District	Mid Land		Low Land			
	Total	Rural	Urban	Total	Rural	Urban
Ambalapuzha	1007	1031	984
Chengannur	1044	1042	1053	1019	1019	...
Karthikapally	1040	1042	1030
Kuttanad	1022	1022	...
Mavelikara	1029	1032	973	1068	1067	1071
Sherthallai	1021	1021	1025
Thiruvalla	1033	1030	1063	1016	1016	...
Alleppey District	1034	1033	1043	1024	1029	1007

Source: Superintendent of Census Operations, Kerala.



AREA AND
Table

PERCENTAGE DISTRIBUTION OF

Age/Age Group	Total	
	Percentage of males to total males	Percentage of females to total females
Under 1 Year	2.73	2.56
1	2.91	2.74
2	3.19	2.97
3	2.83	2.65
4	2.74	2.57
5 — 9	14.98	14.14
10 — 14	13.72	13.22
15 — 19	7.97	8.47
20 — 24	7.61	8.42
25 — 29	6.77	7.80
30 — 34	6.09	6.39
35 — 39	6.51	6.32
40 — 44	4.41	4.24
45 — 49	4.75	4.57
50 — 54	3.49	3.39
55 — 59	3.05	3.10
60 — 64	2.28	2.30
65 — 69	1.63	1.68
70 +	2.32	2.45
Age not stated	0.02	0.02

N. Negligible

Source: Superintendent of

POPULATION

1.11

POPULATION BY AGE GROUPS

Rural		Urban	
Percentage of males to total males	Percentage of females to total females	Percentage of males to total males	Percentage of females to total females
2.72	2.55	2.76	2.65
2.93	2.75	2.85	2.66
3.17	2.95	3.29	3.04
2.82	2.63	2.86	2.75
2.74	2.55	2.70	2.64
15.05	14.17	14.70	13.98
13.79	13.22	13.41	13.20
7.95	8.47	8.03	8.49
7.52	8.37	8.04	8.70
6.68	7.75	7.18	8.05
6.05	6.40	6.28	6.34
6.47	6.32	6.68	6.29
4.39	4.23	4.53	4.30
4.71	4.57	4.92	4.53
3.49	3.41	3.53	3.31
3.07	3.14	2.94	2.89
2.34	2.32	2.02	2.24
1.68	1.70	1.38	1.60
2.40	2.47	1.90	2.34
0.03	0.03	N	...

AREA AND POPULATION

Table: 1.12

PERCENTAGE BY BROAD AGE GROUPS (1961)

Category	Age Group	Percentage
Infants and Young children	0 — 4	13.9
Boys and Girls	5 — 14	28.0
Young men and Women	15 — 34	29.8
Middle aged men and women	35 — 54	18.9
Elderly Persons	55 and above	9.4

Source: Superintendent of Census Operations, Kerala.

1912

1913

1914

1915

1916

1917

1918

1919

1920

1921

1922

1923

AREA AND

Table :

DISTRIBUTION OF 1000 PERSONS BY

Marital Status	Males	
	Total	Rural
Never Married	626	623
Married	349	351
Widowed	20	21
Divorced or Separated	5	5
Unspecified	N	N

N. = Negligible

Source : Superintendent of

POPULATION

1.13

SEX AND MARITAL STATUS (1961)

Females			
Urban	Total	Rural	Urban
639	521	520	524
339	357	360	345
17	101	98	111
5	21	22	20
N.	N.	N.	N.

Census Operations, Kerala.

AREA AND

Table:

POPULATION BY

Religion	Number	
	Total	Rural
Buddhists	30	3
Christians	515400	535117
Hindus	1184936	1001652
Jains	101	...
Jews	7	...
Muslims	110280	63571
Sikhs	26	17
Zoroastrians	4	...
Religion not stated	468	461
All Religions	1811252	1500821

N. = Negligible

Source: Superintendent of

POPULATION

1.14

RELIGION (1961)

Percentage Distribution			
Urban	Total	Rural	Urban
27	N.	N.	0.01
80283	28.45	28.99	25.86
183284	65.42	66.74	59.04
101	0.01	...	0.03
7	N.	...	N.
46709	6.09	4.24	15.05
9	N.	N.	0.01
4	N.	...	N.
7	0.03	0.03	N.
310431	100.00	100.00	100.00

Census Operations, Kerala.

AREA AND POPULATION

Table: 1.15

DISTRIBUTION OF PERSONS BY MOTHER-TONGUE

Sl. No.	Mother-tongue	No. of Persons	Percentage to total
1.	Malayalam	1779531	98.25
2.	Tamil	14415	0.80
3.	Konkani	12191	0.67
4.	Telugu	790	0.04
5.	Hindi	736	0.04
6.	Gujarathi	619	0.03
7.	English	552	0.03
8.	Others	2418	0.14
	Total	1811252	100.00

Source: Superintendent of Census Operations, Kerala.



AREA AND

Table :

TREND OF

Census Year	Persons	Males
1901	668388	336520
1911	767239	386107
1921	909555	459690
1931	1130715	567484
1941	1274029	636901
1951	1521303	753552
1961	1811252	893435

Source : Superintendent of

POPULATION

1.16

POPULATION - 1901 - 1961

Females	Decade variation	Percentage Decade variation
331868
381132	+ 98851	+ 14.79
449865	+ 142316	+ 18.55
563231	+ 221160	+ 24.32
637128	+ 143314	+ 12.67
767751	+ 247274	+ 19.41
917817	+ 289949	+ 19.06

Census Operations, Kerala.

AREA AND

Table

WORKERS AND:

Taluk/District	Workers	
	Male	Female
Sherthallai	73275	63352
Ambalapuzha	59019	26857
Kuttanad	39941	19387
Thiruvalla	66087	17307
Chengannur	44625	15312
Karthikappally	63011	34426
Mavelikara	61779	26046
Alleppey	407737	202687

Source: Superintendent of

POPULATION

1.17

NON-WORKERS (1961)

Non-workers			
Total	Male	Female	Total
136627	80840	94060	174900
85876	75554	108607	184161
59328	43740	66151	109891
83394	84469	137762	222231
59937	53203	85706	138909
97437	76429	110531	186960
87825	71463	112313	183776
610424	485698	715130	1200828

Census Operations, Kerala.

AREA AND POPULATION

Table: 1.18

DISTRIBUTION OF 1000 PERSONS IN EACH TALUK INTO WORKERS & NON-WORKERS (1961)

Taluk/District	Workers			Non-workers		
	Persons	Males	Females	Persons	Males	Females
Ambalapuzha	318	439	198	682	561	802
Chengannur	301	456	152	999	544	848
Karthikappally	343	452	237	657	548	763
Kuttanad	351	477	227	549	523	773
Mavelikara	323	464	188	677	536	812
Sherthala/lai	439	475	402	561	525	598
Thiruvalla	273	439	112	727	561	888
Alleppey	337	456	221	663	544	779

Source: Superintendent of Census Operations, Kerala.

AREA AND POPULATION

Table: 1.19

POPULATION OF SCHEDULED CASTES & SCHEDULED TRIBES (1961)

Taluk/District	Scheduled Castes			Scheduled Tribes		
	Persons	Males	Females	Persons	Males	Females
Ambalapuzha	9063	4523	4540
Chengannur	25954	13008	12946	21	10	11
Karthikappally	22094	11082	11012	31	17	14
Kuttanad	16564	8038	8526	19	11	8
Mavelikara	39382	19790	19592	29	13	16
Sherthallai	27070	13440	13630	177	98	79
Thiruvalla	26540	13467	13073	307	151	156
Alleppey	166667	83348	83319	584	300	284

Source: Superintendent of Census Operations, Kerala.

AREA AND POPULATION

Table: 1.20

TOWNS AND VILLAGES (1961)

Name of Taluk	Towns		Number of Villages
	Municipal	Non-municipal	
Ambalapuzha	Alleppey		7
Chengannur		Chengannur	14
Karthikappally	Kayamkulam	Haripad	17
Kuttanad			12
Mavelikara	Mavelikara	Pandalam	15
Sherthallai	Sherthallai		16
Thiruvalla	Thiruvalla		18

Source: Superintendent of Census Operations, Kerala.

AREA AND POPULATION

Table: 1.21

AREA AND POPULATION OF MUNICIPALITIES (1961 CENSUS)

Municipalities	Area		Population 1961 (.000)	Density Per Sq. Mile Per Sq. K.M.
	Sq. Miles	Sq. K.M.		
Kayamkulam	8.41	21.78	44.57	5300
Mavelikara	3.60	6.32	18.97	5271
Thiruvalla	5.59	14.48	24.24	4337
Alleppey	18.06	46.78	138.83	7687
Sherthallai	6.25	16.19	31.16	4985
				2046
				2035
				1675
				2968
				1926

Source: Census of India, Paper No. 1 of 1962

AREA AND POPULATION

Table: 1.22

ESTIMATED POPULATION OF ALLEPPEY DISTRICT AND KERALA STATE AS ON 1ST MARCH (POPULATION IN LAKHS)

Sl. No.	Year	Alleppey District	Kerala State
1	1961	18.11	169.04
2	1952	18.50	173.49
3	1963	18.89	177.95
4	1964	19.27	182.42
5	1965	19.65	186.89
6	1966	20.01	191.37

Source: Bureau of Economics and Statistics, Kerala, Trivandrum.

10/10/10

1

10/10/10

1

10/10/10

1

10/10/10

1

10/10/10

1

10/10/10

1

10/10/10

1

10/10/10

1

10/10/10

1

10/10/10

1

10/10/10

1

10/10/10

1

AREA AND

Table :

SEX RATIO OF WORKERS BY

District/Taluk	Total Workers	Cultivators	Agricultural labourers	Engaged in mining, fishing, forestry, hunting etc.
1	2	3	4	5
Ambalapuzha	455	124	1267	24
Chengannur	343	206	916	12
Karthikapally	546	218	1034	51
Kuttanad	485	74	1257	90
Mavelikara	422	248	939	28
Sherthallai	865	164	622	95
Thiruvalla	262	138	581	42
Alleppey District	497	189	920	60

POPULATION

1.23

INDUSTRIAL CLASSIFICATION (1961)

At house- hold Industry	In manu- facture other than household industry	In construction	In Trade & Commerce	In Transport Storage and Communica- tion	In other services	Total Non- workers.
6	7	8	9	10	11	12
6140	212	69	87	102	323	1437
605	40	10	55	8	351	1611
3080	648	5	26	2	277	1446
504	29	7	15	5	251	1512
1482	675	7	49	15	386	1572
5574	271	17	82	20	212	1164
368	31	7	41	16	413	1631
3808	273	22	55	34	306	1472

AREA AND POPULATION

Table: 1.24

SEX-RATIO BY AGE GROUP (1961)

Age/Age Group	Sex Ratio
Under 1 year	967
2 years	965
2 "	955
3 "	963
4 "	964
5 "	973
6 "	960
7 "	1011
8 "	916
9 "	993
10 to 14 "	989
15 to 19 "	1092
20 to 24 "	1136
25 to 29 "	1184
30 to 34 "	1077
35 to 39 "	997
40 to 44 "	988
45 to 49 "	989
50 to 54 "	998
55 to 59 "	1045
60 to 64 "	1036
65 to 69 "	1059
70 and above	1086

AREA AND POPULATION

Table: 1.25

SEX RATIO BY RELIGION - 1961

Religion	Sex Ratio in	
	Alleppey District	Kerala state
Christian	1011	995
Hindus	1039	1028
Muslims	982	1032

AREA AND

Table :

PERCENTAGE DISTRIBUTION OF POPULATION

Marital Status	Alleppey District		
	Total	Male	Female
Never married	57.27	62.58	52.11
Married	35.31	34.90	35.71
Widowed	6.07	1.99	10.04
Divorced or Separated	1.35	0.53	2.14
Unspecified Status	N.	N.	N.
Total	100.00	100.00	100.00

Source : Superintendent of

POPULATION

1.26

BY MARITAL STATUS AND SEX - 1961

Kerala State			
Female	Total	Male	Female
52.11	56.67	62.41	51.05
35.71	35.84	35.20	36.47
10.04	5.92	1.71	10.04
2.14	1.54	0.65	2.41
	0.03	0.03	0.03
100.00	100.00	1000.00	100.00

Census Operations, Kerala.

AREA AND

Table :

PERSONS NOT AT WORK CLASSIFIED BY

Sl. No.	Activity	Persons
1.	Full time Students	443275
2.	House-hold duties	275898
3.	Dependents, infants and disabled.	443544
4.	Retired, rentier and independent means.	8199
5.	Beggars, Vagrants etc.	4207
6.	Inmates of Penal, mental and charitable institution	1294
7.	Persons seeking employment not for the first time.	19668
8.	Persons employed before, but now out of employment and seeking work.	4773
9.	Total Non-working Population	1200828

Source : Superintendent of

POPULATION

1.27

SEX AND TYPE OF ACTIVITY - 1961

Total		Percentage		
Male	Female	Persons	Male	Female
238682	204593	36.91	49.15	28.61
...	275898	22.97	...	38.58
219245	224299	36.94	45.14	31.37
6110	2089	0.68	1.26	0.29
2725	1482	0.35	0.56	0.21
943	321	0.11	0.19	0.04
13798	5870	1.64	2.84	0.82
4195	578	0.40	0.86	0.08
485698	715130	100.00	100.00	100.00

Census Operations, Kerala.

AREA AND

Table :

DISTRICT-WISE AREA AND

Districts	❖ Area	
	Sq. miles	Sq. K. M.
Trivandrum	844.00	2185.9
Quilon	1827.3	4732.7
Alleppey	708.1	1834.0
Kottayam	2455.6	6360.0
Ernakulam	1289.5	3339.8
Trichur	1137.0	2944.8
Palghat	1979.6	5127.2
Kozhikode	2570.2	6656.8
Cannanore	2191.3	5675.5
Kerala	15002.6	38856.7

❖ Figures furnished by the

Source: Superintendent of

POPULATION

1.28

POPULATION - KERALA 1961

Population 1961	Density per		Sex Ratio
	Sq. mile	Sq. K. M.	
1744531	2067	798	1005
1941228	1062	410	996
1811252	2558	988	1027
1732880	706	273	963
1859913	1442	557	997
1639862	1442	557	1090
1776566	897	346	1086
2617189	1018	393	1012
1780294	812	314	1035
16903715	1127	435	1022

State Survey Department.

Census Operations, Kerala.

RAINFALL

The meteorological data given in this part of the abstract relate to the rainfall in Alleppey District. The average annual and monthly rainfall in rain recording stations, monthly rainfall from 1963 to 1966 (month-wise) and the average annual rainfall for the district as compared to the State are also given.

II. RAINFALL

Table: 2.1

AVERAGE ANNUAL RAINFALL AT RAIN RECORDING CENTRES

Name of Centre	Annual rainfall (m. m.)		Average monthly rainfall (m.m.)	
	1965	1966	1965	1966
Arukuty	2642.5	3116.0	220.2	283.3
Shertalai	2950.3	2335.9	245.9	194.7
Alleppey	2044.0	2781.2	170.3	231.8
Ambalapuzha	2330.3	2606.1	194.2	271.2
Thiruvalla	2103.2	2474.7	175.3	206.2
Chengannur	2449.4	3103.8	204.1	258.7
Haripad	2028.4	1993.7	169.0	166.1
Mavelikara	4161.1	1325.1	346.7	120.5
Kayamkulam	1967.5	2178.8	164.0	181.7

Source: State Observatory, Trivandrum.

II. RAINFALL

Table: 2.2

AVERAGE MONTHLY RAINFALL (M. M.)

Month	1963	1964	1965	1966
January	51.7	9.1	38.6	0.6
February	45.1	16.3	2.4	12.3
March	69.3	103.5	42.0	62.5
April	113.2	94.5	84.2	187.2
May	156.4	142.3	339.9	67.7
June	348.3	293.3	511.8	489.9
July	671.1	755.0	334.0	370.6
August	416.5	304.4	380.3	165.5
September	355.9	379.9	195.6	435.0
October	310.7	430.5	100.0	387.1
November	154.1	221.1	210.8	383.2
December	48.6	1.4	260.9	31.6

Source: Bureau of Economics & Statistics, Trivandrum.

II. RAINFALL

Table: 2.3

AVERAGE ANNUAL RAINFALL (M. M.) YEARLY (JULY TO JUNE)

Place	No. of rain recording Stations as on 31-3-1966	1963-64	1964-65	1965-66
Alleppey District	9	2615.9	3111.2	2301.8
Kerala State	81	2465.2	3169.3	2209.1

Source: Bureau of Economics and Statistics, Trivandrum.

AGRICULTURE

The statistics relating to agriculture have been dealt with in this section. Area under important crops, production of important crops, agricultural machinery and implements, and production of important crops for the district as well as for the state are given. Classification of area, soil and other details relevant to agriculture have also been included.



III.

Table :

CLASSIFICATION OF AREA (AREA IN

Classification
Total geographical area according to village papers
Forest
Land put to non-agricultural uses
Barren and uncultivable land
Permanent pastures and other grazing lands
Land under misc. free crops not included in net area sown
Cultivable waste
Fallow land other than current fallow
Current fallow
Net area sown
Area sown more than once
Total cropped area

Source : Bureau of Economics

AGRICULTURE

3.1

HECTS.) -- YEAR -- JULY TO JUNE

1963-64	1964-65	1965-66
186790	186790	186790
513	513	513
10378	11270	13115
1939	1740	1310
270	271	250
8256	9145	6150
2529	2566	2535
460	460	480
1924	639	790
16002	160186	161647
60184	59595	60635
220209	219781	222282

and Statistics.

Table :

AREA UNDER IMPORTANT

CROPS

Rice
Pulses
Sugar crops
Pepper
Ginger
Turmeric
Cardamom
Betel nuts
Mangoes
Bananas (including plantain)
Cashewnuts
Tapioca
Coconut
Tea
Coffee
Rubber

Source : Bureau of Economics &

AGRICULTURE

3.2

CROPS (AREA IN HECTS.)

Alleppey District		Kerala State	
1964-65	1965-66	1964-65	1965-66
81911	81603	801121	802329
1058	1044	43595	43312
5660	5271	14870	14769
1275	1275	99552	99695
60	60	11973	11847
28	28	4614	4464
...	...	28684	28684
3312	3510	59488	64478
5083	4925	63317	62217
2870	3121	45199	47779
2750	2808	85974	87366
24060	23035	209371	229684
70784	75599	558991	586313
...	...	39356	39470
...	...	21733	23602
2737	2736	146952	149634

Statistics, Trivandrum.

III.
Table
PRODUCTION OF

Crops	Unit
Rice	Tonnes
Pulses	Tonnes
Sugarcane	Tonnes
Pepper	Tonnes
Ginger	Tonnes
Turmeric	Tonnes
Cardamom	Tonnes
Betel nuts	M. Nuts
Banana	Tonnes
Other Plantain	Tonnes
Tapioca	Tonnes
Cocoanut	M. Nuts
Cotton (Bales of 180 Kg.)	
Tea	Tonnes
Coffee	Tonnes
Rubber	Tonnes

Source : Bureau of Economics

AGRICULTURE

3.3

IMPORTANT CROPS

Alleppey District		Kerala State.	
1964-65	1965-66	1964-65	1965-66
118117	92600	1121383	997489
360	352	17061	16901
28334	25050	44034	40948
370	355	22228	21685
83	83	11328	11190
25	25	3910	3766
...	...	1606	1606
516	546	8945	9681
5479	5035	78135	77421
16173	18555	263251	283701
350314	349211	2763197	3095658
514	505	3278	3293
...	...	9851	6933
...	...	42075	39154
...	...	9685	9878
383	445	40065	46953

and Statistics.

III. AGRICULTURE

Table 3.4

INDEX NUMBERS OF AGRICULTURAL PRODUCTION
(BASE 1956 - 57) = 100 (Kerala)

Item	1960-61	1964-65	1965-66
All Crops	112.1	120.0	119.3
Food grains	119.8	125.8	112.1
Cereals	120.1	126.1	112.3
Paddy	120.2	126.3	112.4
Jowar	72.7	63.4	51.1
Ragi	117.6	109.6	104.1
Pulses	93.9	91.7	90.5
Non-Food grains	108.9	117.6	122.3
Oil seeds	102.3	104.7	105.5
Cocoanut	102.5	104.3	104.8
Cocoanut	102.5	103.3	104.8
Groundnut	86.8	137.3	158.6
Sesamum Oil	40.1	37.2	36.7
Lemongrass Oil	168.4	157.7	157.7
Fibres	106.1	98.5	69.3
Cotton	106.1	98.5	69.3
Plantain crops	112.3	141.1	150.1
Tea	116.3	121.1	121.1

III. AGRICULTURE

Table 3.4 (Contd.)

Item	1960-61	1964-65	1965-66
Coffee	110.3	144.2	147.1
Rubber	106.4	185.0	216.8
Miscellaneous crops	114.6	119.2	126.5
Sugarcane	106.4	123.0	114.4
Pepper	99.2	81.6	79.6
Cardamom	100.2	100.4	100.4
Ginger	103.6	104.1	102.9
Turmeric	99.7	93.2	89.8
Arecanut	116.9	135.0	146.1
Banana	102.2	122.4	121.3
Cashewnut	144.2	164.4	167.0
Tobacco	150.4	137.4	136.0
Tapioca	116.4	110.5	123.8

Source: Bureau of Economics and Statistics.

ESTIMATED MEAN YIELD OF DRY PADDY IN

Taluk/District	1964-65				
	Virippu		Mundakan		Punja
	Cropped area	Mean yield of dry paddy	Cropped area	Mean yield of dry paddy	Cropped area
Karthigappally	5122	1856	5890	2228	3754
Mavelikkara	3918	1074	3815	2559	4366
Chengannur	2216	1506	2017	2448	2206
Thiruvalla	1759	1933	2090	2570	3177
Kuttanad	2066	1150	24700
Ambalapuzha	921	1362	1151	1283	4036
Sherthalai	6026	1097	2681	977	...
Alleppey District	22028	1393	17644	2113	42239

Source: Bureau of Economics

AGRICULTURE

3.5

KG/HECT. (AREA IN HECTS.)

1965-66						
Virippu		Mundakan			Punja	
Mean yield of dry paddy	Cropped area	Mean yield of dry paddy	Cropped area	Mean yield of dry paddy	Cropped area	Mean yield of dry paddy
2230	5122	1847	5890	1696	3754	1452
2334	3663	1500	3815	1752	4357	2246
2688	2216	2439	1910	2601	2191	1990
2601	1736	2373	2090	1769	3037	1704
2868	2328	2433	24700	1796
1561	900	1364	1151	960	4036	1036
...	6026	2135	2681	923
2601	21991	2011	17537	1649	42075	1742

and Statistics.

III. AGRICULTURE

Table 3.6

CLASSIFICATION OF SOIL

Type of Soil	Details of Distribution
1. Sandy loam	Karthigappally and Mavelikkara Taluks
2. Sandy Soil	Sherthalai and Ambalapuzha Taluks
3. Clay loam with much abidity	Kuttanad
4. Laterite Soil	Chengannur and part of Mavelikkara

Source: District Statistical Office, Alleppey.

III. AGRICULTURE

Table 3.7

LIST OF PADDY SEED FARMS AND RESEARCH STATIONS.

Name of Station	Taluk
State Seed Farm, Veeyapuram	Karthigappally
State Seed Farm, Arunoothimangalam	Mavelikkara
State Seed Farm, Pullad	Thiruvalla
Regional Research Station, Kayamkulam	Karthigappally
Rice Research Station, Moncompu	Kuttanad
Oil Seeds Research Station, Kayamkulam	Karthigappally
District Agricultural Farm for fruits, Vegetables and spices, Mavelikkara	Mavelikkara
Central Coconut Research Station, Kayamkulam	Karthigappally

Source: District Statistical Office, Alleppey.

III. AGRICULTURE

Table 3.8

IMPORTANT MARKETS FOR AGRICULTURAL COMMODITIES

Market	Commodities
1. Alleppey	Rice, Copra, Coconut Oil, Pepper, Ginger, Arecanut (dry) Coir, Oilcake and forward market rates.
2. Mavelikkara	Rice, Coconut Oil, Copra, Coconut, Tapioca (raw) Tapioca (dry) Canegur and Banana.
3. Thiruvalla	Rice, Coconut Oil, Copra, Coconut, Tapioca (raw) Tapioca (dry) Canegur and Banana.
4. Kayamkulam	Coconut Oil, Coconut Oilcake, Copra, Tapioca, Plamgur, Canegur, Coconut.
5. Pulinkunnu	Rice, Paddy, Copra, Coconut Oil, Coconut etc.

Source: District Statistical Office, Alleppey.



ITEM

Ploughs :

Wooden

Iron

Carts

Sugarcane Crushers :

Power

Bullocks

Oil Engines with pumps for irrigation

Electric Pumps for irrigation

Tractors

Ghanis: 5 kg. and more

Less than 5 kg.

Source : Live stock census

AGRICULTURE

3.9

IMPLEMENTS

Alleppey District		Kerala State	
1961	1966	1961	1966
24475	18235	562281	475930
2446	3329	6441	17179
1015	911	21040	16309
42	63	175	457
186	65	1071	989
407	441	3372	6824
358	405	2565	4869
73	57	276	418
138 (more than 5 seers)	127	2058 (more than 5 seers)	692
193 (less than 5 seers)	142	2164 (less than 5 seers)	628

in 1961 and 1966.

III. AGRICULTURE

Table 3.10

AGRICULTURAL LABOURERS 1961 CENSUS

Category	Alleppey District			Kerala State		
	Male	Female	Total	Male	Female	Total
Workers as agri-cultural labourers	60866	55968	116834	516914	461482	978396

Source: Superintendent of Census Operations, Kerala.

LIVESTOCK AND VETERINARY

The information presented in this section relates to the Veterinary institutions, livestock population, etc. The source of livestock statistics is the quinquennial livestock census.

IV. LIVESTOCK AND

Table

LIVESTOCK

Item

Cattle

- a. Males over 3 years
- b. Females over 3 years
- c. Young stock

Buffaloes :

- a. Males over 3 years
- b. Females over 3 years
- c. Young stock

Sheep**Goats****Horses and Ponies****Mules****Donkeys****Pigs****Total Livestock****Poultry**

- a. Fowls
 - b. Ducks
 - c. Others
-

Source: Livestock Census

VETERINARY

4.1

POPULATION

Alleppey District		Kerala State	
1961	1966	1961	1966
299257	326093	2753165	2856727
19066	18294	566031	519523
152119	166851	1161986	1219242
128072	140938	1025148	1117962
15012	15604	485089	471235
7957	8439	285112	253850
5360	5252	135113	134770
1895	1913	64864	82615
2138	1170	24241	11519
88368	80234	1312262	1189218
4	11	408	426
Nil	Nil	31	8+4 camel
Nil	2	377	310
119	170	122381	111928
404898	423284	4697954	4641375
1085647	1140607	9106320	9908987
882125	971776	8708664	9587286
202644	168312	387072	318751
878	219	10584	2950

1961 and 1966.

IV. LIVESTOCK

Table

VETERINARY HOSPITALS

District/State	Hospitals					
	62-63	63-64	64-65	65-66	66-67	62-63
1	2	3	4	5	6	7
Alleppey	6	6	6	6	6	17
Kerala	60	60	60	60	63	140

Source: Department of Animal

AND VETERINARY

42

AND DISPENSARIES

Dispensaries				Mobile Dispensaries				
63-64	64-65	65-66	66-67	62-63	63-64	64-65	65-66	66-67
8	9	10	11	12	13	14	15	16
21	21	21	21	1	1	2
186	185	186	198	3	4	5	7	11

Husbandry, Trivandrum.

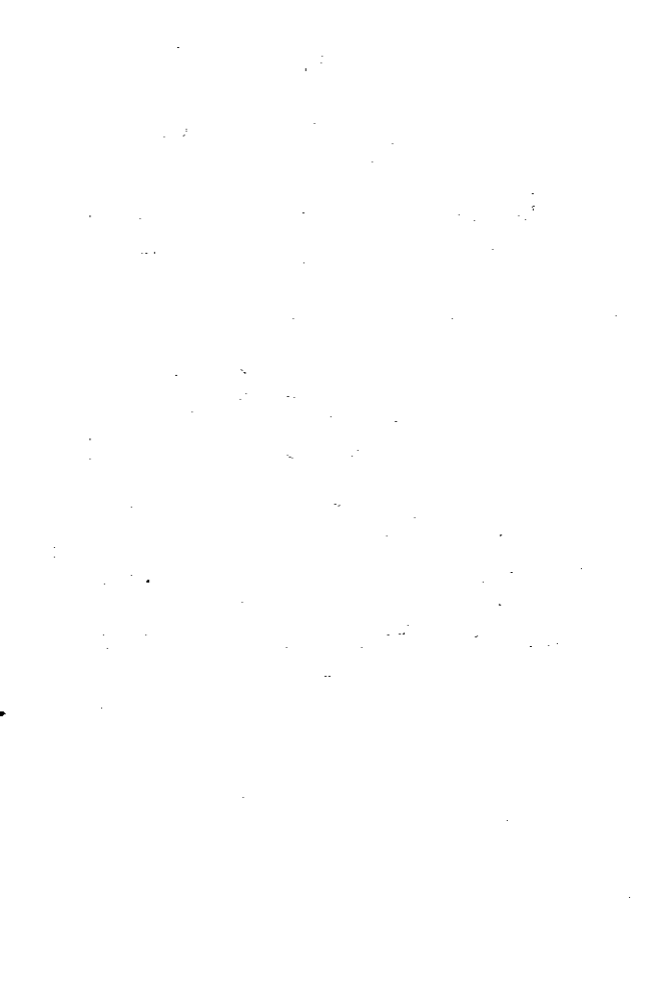
IV. LIVESTOCK AND VETERINARY

Table 4.3

LIVESTOCK TREATED IN VETERINARY INSTITUTIONS (1964-65)

Description	Alleppey District	Kerala State
Cases of Anti-rabic treatment done	1228	6892
Inpatients treated	689	1303
Out patients treated	155047	1190471
Total	155786	1191774
Number of obstetrical cases	579	10187
Number of castrations	613	31268
Other operations	2791	25419
Total	3983	66874

Source: Administration Report of Animal Husbandry Department, Kerala.



IV. LIVESTOCK AND

Table

LIVESTOCK SLAUGHTERED IN MUNICIPALITIES

Municipality	1965						
	Cow	Bulls or Bullocks	Calves	Buffaloes	Sheep	Goats	Pigs
Kayamkulam	300	934	172	67	...	1970	...
Mavelikkara	287	305	269	...
Thiruvalla	...	916	250	1262	...
Alleppey	1177	2085	...	231	...	10262	...
Sherthalai	277	315	...	87	934	1064	30

Source :

VETERINARY

4.4

OF ALLEPPEY DISTRICT 1965 AND 1966

1966								
Total slaughtered	Cow	Bulls and Bullocks	Calves	Buffaloes	Sheep	Goats	Pigs	Total slaughtered
3443	270	744	79	191	...	1483	...	2767
861	258	549	53	...	860
2428	65	941	...	2	...	1445	...	2453
13755	776	1911	...	443	...	15189	...	18319
2707	288	470	...	113	58	1049	14	1992

Municipalities

FORESTS

This Section presents the area of reserved forests in Alleppey District. As the forest area is very meagre it has been included in the nearly forest division and as such the out turn of major forest produces are not available.

V. FORESTS

Table 5.1

AREA OF RESERVED FORESTS DURING 1965—66

Category	In Alleppey District (in hectares)	In Kerala State (in hectares)
Reserved forests	513	884947

Source: Forest Department,
Government of Kerala.

ELECTRICITY

The number of consumers of electricity during 1960-61, 1964-65 and 1965-66 are given in this Section so as to give an idea about the growth in the consumption of electricity.

VI. ELECTRICITY

Table 6.1

NUMBER OF CONSUMERS OF ELECTRICITY

Electricity Division/State	Number of Consumers		
	1960-61	1964-65	1965-66
Alleppey Electricity Division	24506	29422	32328
Kerala State	174993	280010	324111

Source: Chief Engineer of Electricity,
Trivandrum.

INDUSTRIES, LABOUR AND EMPLOYMENT

This Section presents information regarding the number of registered factories, employment in these factories, employment in plantation, working of employment exchanges, industrial disputes, etc. Data for the latest period available has been incorporated. The 1961 census figures pertaining to the various aspects of the working population of the district has also been given.

VII. INDUSTRIES, LABOUR AND EMPLOYMENT
Table 7.1

REGISTERED WORKING FACTORIES IN ALLEPPEY DISTRICT

Industry	Alleppey District		Kerala State	
	1964	1965	1964	1965
1	2	3	4	5
1. Oil mills	94	92	263	272
2. Sugar	2	2	2	3
3. Cashew factories	6	6	199	209
4. Other food articles except beverages	8	8	30	30
5. Coir	112	112	147	139
6. Umbrellas	3	3	18	19
7. Saw mills	1	1	194	222
8. Other timber industries	8	9	195	207
9. Printing and binding	17	17	187	194
10. Rubber and Rubber Products	3	4	111	125
11. Pharmaceuticals	1	1	21	20
12. Soap	...	4	7	31

VII. INDUSTRIES, LABOUR AND EMPLOYMENT
Table 7.1 (Contd.)

1	2	3	4	5
13. Other chemicals	4	1	40	28
14. Bricks and tiles	4	4	208	221
15. Basic metal industry	2	2	26	32
16. Metal product except machinery & transport equipments	1	2	79	92
17. Agricultural implements	7	8
18. General and jobbing engineering	1	2	52	68
19. Other machinery except electrical machinery...	18	20
20. Electrical machinery	1	1	21	28
21. Marine Engines, building and repairing	7	8
22. Repair of motor vehicles	1	1	133	132
23. Manufacture of Bicycles	3	5
24. Other Industries not classified above	10	9	704	707
TOTAL	279	281	2672	2820

Source : Bureau of Economics and Statistics.

VII. INDUSTRIES, LABOUR AND EMPLOYMENT

Table 7.2

NUMBER OF EMPLOYEES IN REGISTERED FACTORIES

Industry	Alleppey District		Kerala State	
	1964	1965	1964	1965
1	2	3	4	5
1. Oil mills	738	730	2034	2123
2. Sugar	1184	848	1184	1192
3. Cashew factories	6466	6564	83850	88637
4. Other food articles except beverage	206	133	1978	1913
5. Coir	4345	3984	7159	6408
6. Umbrella	35	33	522	546
7. Saw mills	9	9	3944	4164
8. Other timber industries	220	223	6086	6518
9. Printing and binding	159	156	4350	4696
10. Rubber and rubber products	182	206	3182	3418
11. Pharmaceuticals	33	26	770	736
12. Soap	...	32	1275	684

VII. INDUSTRIES, LABOUR AND EMPLOYMENT
Table 7.2 (Contd.)

	1	2	3	4	5
13. Other chemicals		55	20	1781	2733
14. Bricks and tiles		88	67	13751	13801
15. Basic metal industry		28	28	2336	2191
16. Metal product except machinery and transport equipments		18	27	2429	2814
17. Agricultural implements		304	362
18. General and jobbing engineering		16	37	2188	2542
19. Other machinery except electrical machinery		2068	2127
20. Electrical machinery		46	43	805	1002
21. Marine engines, building and repairing		777	827
22. Repair of motor vehicles		68	69	3647	3667
23. Manufacture of bicycles		86	184
24. Other Industries not classified above		143	253	39641	42171
TOTAL		14039	13488	186147	195456

Source: Bureau of Economics and Statistics.

VII. INDUSTRIES, LABOUR AND EMPLOYMENT

Table 7.3

EMPLOYMENT IN PLANTATIONS - RUBBER (DAILY AVERAGE)

Category	Alleppey District		Kerala State	
	1963	❖ 1965	1963	1964 ❖ 1965
Garden labour (Permanent)	1350	1364	52663	53485
Outside labour (Permanent)	646	653	21746	22101
Outside labour (Temporary)	665	672	32642	33209
Total	2661	2689	107051	108796

❖ Provisional figures.

Source: Bureau of Economics and Statistics.

VII. INDUSTRIES, LABOUR AND EMPLOYMENT

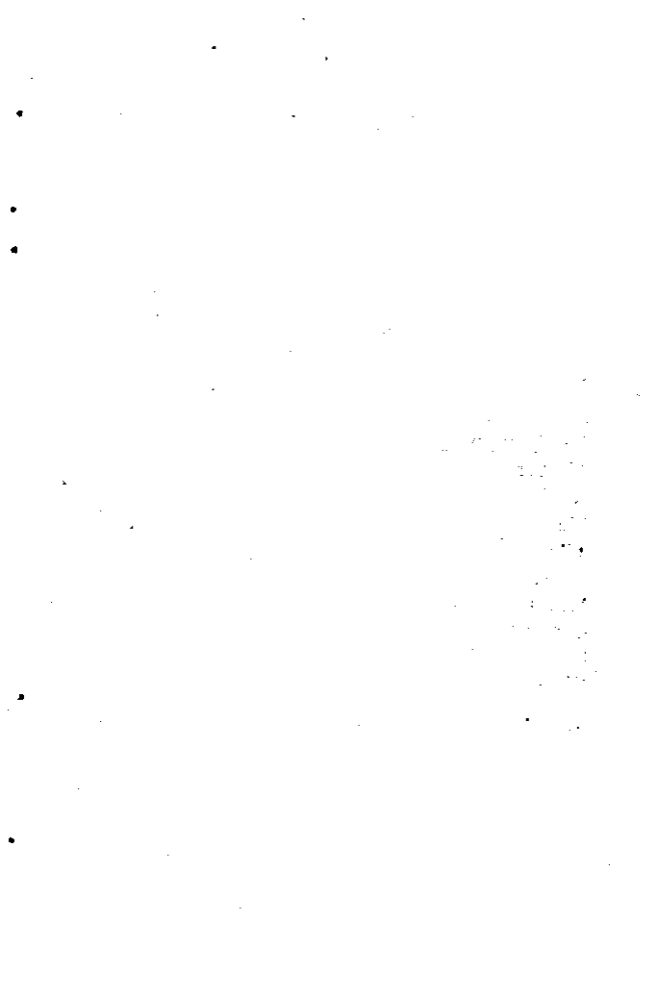
Table 7.4

AGRICULTURAL WAGES (DAILY AVERAGE) IN RUPEES.

Category	Year	Alleppey District	Kerala State
Carpenter	1960	2.66	2.89
	1965	5.32	4.80
	1966	6.05	5.34
Mason	1960	3.50	3.10
	1965	5.07	4.73
	1966	5.80	5.26
Field labour (Men)	1960	1.78	1.82
	1965	2.86	3.02
	1966	3.50	3.40

Note: 1966 - Average for 10 months.

Source: Bureau of Economics and Statistics.



VII. INDUSTRIES, LABOUR

Table

INDUSTRIAL

Industry	1964		
	Number of		
	Disputes	Workers involved	Mandays lost.
Plantation			
Toddy tapping	1	2054	8883
Timber			
Rubber			
Matches			
Tiles			
Plywood			
Motor transport			
Cement			
Coir			
Electricity			

VII. INDUSTRIES, LABOUR

Table

APPLICANTS ON THE LIVE REGISTER OF

Occupation Category

1. Professional, Technical and related workers
2. Administrative, Executive and Managerial Workers
3. Clerical and related workers
4. Sales workers
5. Farmers, Fishermen, Hunders, Loggers and related workers
6. Miners, quarrymen and related workers
7. Workers in transport and communication occupations
8. Craftsmen, Production Process workers and labourers not elsewhere classified
9. Service, Sports and Recreation workers
10. Workers not classifiable by occupation

Total

Source : National Employment

AND EMPLOYMENT

7.6

EMPLOYMENT EXCHANGE (CATEGORY-WISE)

Alleppey District		Kerala State	
1965	1966	1965	1966
1533	1861	11077	17178
40	42	312	486
872	928	6199	10562
3	1	11	25
279	270	1174	1716
1	1	23	9
471	456	3424	4702
749	953	11126	11705
926	976	6361	8821
7464	7420	84881	101952
12338	12948	124588	157156

Service, Trivandrum.

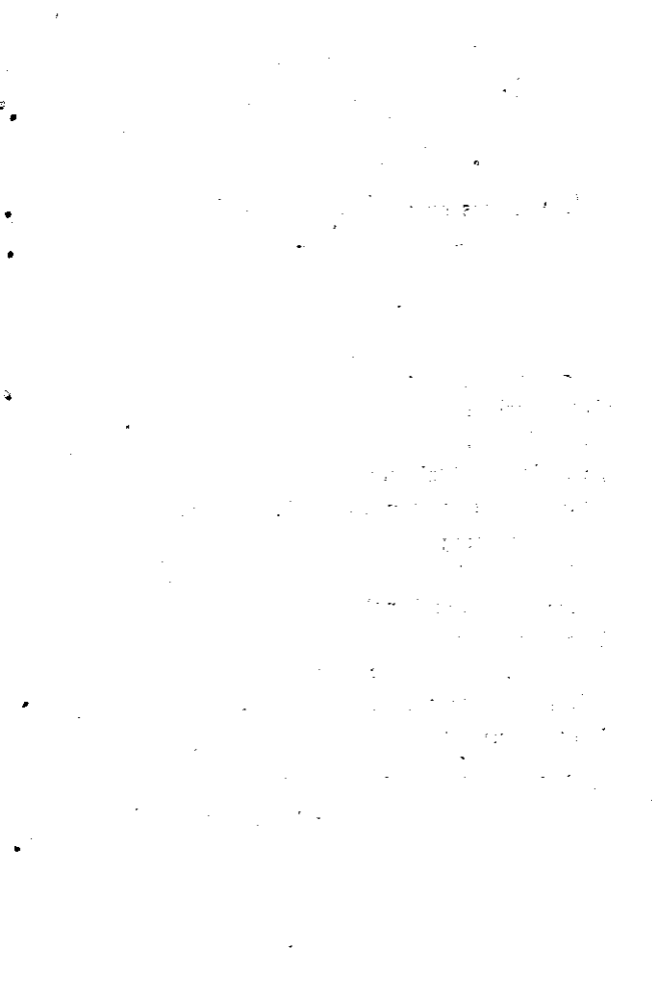
VII. INDUSTRIES, LABOUR AND EMPLOYMENT

Table 7.7

NUMBER OF APPLICANTS PLACED IN EMPLOYMENT THROUGH
EMPLOYMENT EXCHANGES

Sectors	Alleppey District		Kerala State	
	1964-65	1965-66	1964-65	1965-66
1. Central Government	11	3	1647	1341
2. State Government	611	511	10097	12401
3. Quasi-Government/Local Body	58	215	2035	3048
4. Private	15	22	225	336
TOTAL	695	751	15221	18001

Source: National Employment Service, Trivandrum.



VII. INDUSTRIES LABOUR

Table

WORKERS BY INDUSTRIAL CATEGORY AND SEX

Industrial Category

- Total workers
 - As cultivators
 - As agricultural labourers
 - In mining, quarrying, livestock, forestry,
fishery, hunting
 - At household industry
 - In manufacture other than household industry
 - In construction
 - In trade and commerce
 - In transport storage and communication
 - In other services
-

Source: Superintendent of

ANE EMPLOYMENT

No. 7.8

IN ALLEPPEY DISTRICT - 1961

Persons		Male		Female	
No.	Percent- age	No.	Percent- age	No.	Percent- age
610424	100.00	407737	100.00	202687	100.00
109566	17.95	92182	22.61	17384	8.57
116834	19.14	60866	14.93	55968	27.61
35108	5.75	33127	8.13	1981	0.98
104353	17.10	21703	5.32	82650	40.78
56114	9.19	44077	10.81	12037	5.94
5913	0.97	5788	1.42	125	0.06
36434	5.97	34535	8.47	1899	0.94
17769	2.91	17181	4.21	588	0.29
128333	21.02	98278	24.10	30055	14.83

Census Operations, Kerala.

VII. INDUSTRIES, LABOUR

Table

WORKING OF MATERNITY BENEFIT ACT DURING

Year	Category of establishments covered by the Maternity benefit Act.	No. of establishments covered by the Maternity benefit Act.	No. of establishments making returns.	Average daily No. of women employed in the establishments making returns.	No. of women who claimed maternity benefits during the year.
1964					
1965					
1966					

Source :

AND EMPLOYMENT

7.9

1964, 1965 AND 1966 IN ALLEPPEY DISTRICT

No. of claims accepted and paid either fully or partly		No. of cases in which special bonus were paid.	Total amount of maternity benefit (including bonus paid in Rs.)	Amount of bonus included under column 10 (in Rs.)	No. of cases in which women enjoyed full maternity leave prior to confinement.
Total	From current year claim.				

VII. INDUSTRIES, LABOUR

Table

WORKERS (EXCLUDING CULTIVATORS AND

Occupational division

Professional, technical and related workers
Administrative, executive and managerial workers
Clerical and related workers
Sales Workers
Farmers, fishermen, hunters, etc.
Workers in transport and communication
Miners, quarrymen and related workers
Craftsmen, production, process workers and
labourers not elsewhere classified
Service, Sport and recreation works
Workers not classified by occupation
All divisions

Source : Superintendent of

AND EMPLOYMENT

No. 7.10

AGRICULTURAL LABOURERS BY OCCUPATIONAL
DIVISION - 1961

Workers	Percentage distribution				
	Persons	Male	Female	Persons	Male
26593	18155	8438	6.92	7.13	6.52
13787	13145	642	3.59	5.16	0.50
10563	10006	557	2.75	3.93	0.43
31562	29923	1639	8.22	11.75	1.27
38474	35793	2681	10.02	14.05	2.07
961	948	13	0.25	0.37	0.01
11972	11670	302	3.12	4.58	0.23
220683	118981	101702	57.46	46.72	78.64
28519	15193	13326	7.43	5.97	10.30
910	875	35	0.24	0.34	0.03
384024	254689	129335	100.00	100.00	100.00

Census Operations, Kerala.

VII. INDUSTRIES, LABOUR AND EMPLOYMENT

Table No. 7.11

NON-WORKERS OF ALLEPPEY DISTRICT BY AGE AND SEX - 1961

Age Group	Persons		Non-workers		Distribution per 1000		
	Male	Female	Male	Female	Persons	Male	Female
All ages	1200828	715130	485698	715130	1000	1000	1000
0 - 14	747032	366014	381018	366014	622	784	512
15 - 34	260652	184070	76582	184070	217	158	257
35 - 59	128143	117055	11088	117055	107	23	164
60 and above	64753	47844	16909	47844	54	35	67
Age not stated	248	147	101	147	N	N	N

Source: Superintendent of Census Operation, Kerala.

Note: N = Negligible

VII. INDUSTRIES, LABOUR AND EMPLOYMENT

Table No. 7.12

DISTRIBUTION OF 1000 PERSONS IN EACH TALUK INTO WORKERS
AND NON-WORKERS BY SEX - 1961

District / Taluk	Workers		Non-workers			
	Persons	Male	Female	Persons	Male	Female
Alleppey District	337	456	221	663	544	779
Ambalapuzha taluk	318	439	198	682	561	802
Chengannur taluk	301	456	152	699	544	848
Karthigappally taluk	343	452	237	657	548	763
Kuttanad taluk	351	477	227	649	523	773
Mavelikkara taluk	323	464	188	677	536	812
Sherthalai taluk	439	475	402	561	525	598
Thiruvalla taluk	273	439	112	727	561	888

Source: Superintendent of Census Operations, Kerala.

VII. INDUSTRIES, LABOUR AND EMPLOYMENT

Table No. 7.13

DISTRIBUTION OF 1000 WORKERS IN EACH TALUK BY SECTORS OF INDUSTRY 1961

Taluk / District	Primary		Secondary		Tertiary				
	Per-sons	Male	Per-sons	Male	Per-sons	Male			
Alleppey District	428	457	372	273	175	468	299	368	160
Ambalapuzha taluk	198	222	147	415	316	631	387	462	222
Chengannoor taluk	652	623	753	90	101	59	258	276	206
Karthigappally taluk	352	374	311	296	166	534	352	460	155
Kuttanad taluk	572	466	792	92	114	46	336	420	162
Mavelikkara taluk	650	644	663	120	98	173	230	258	164
Shertalai taluk	223	332	98	533	276	829	244	392	73
Thiruvalla taluk	595	591	612	93	107	37	312	302	351

Source: Superintendent of Census Operations, Kerala.

REGISTRATION

The number of registration offices, the nature of documents, presented, the nature and number of documents registered, their value, the book war details of registration and the miscellaneous work done by the registration offices of the district and the State are given in this section.

VIII. REGISTRATION

Table 8.1

REGISTRATION OF DOCUMENTS

Sl. No.	Category	Alleppey District		
		1963-64	1964-65	1965-66
1.	Number of sub-Registry Offices	19	19	19
2.	Documents presented for registration	77994	82850	89544
	Nature of Documents presented :			
3.	Mortgages	26979	29285	30158
4.	Sale deeds	22111	22344	25830
5.	Wills	307	328	375
6.	Money Bonds	701	664	353
7.	Other classes	27896	30229	32828
8.	Documents registered	77879	81261	91242
9.	Value of documents registered (Rs.)	63545971	78952312	74662341

Source: Inspector-general of Registration.



VIII.

Table

CATEGORY AND VALUE OF

Sl. No.	Name of Documents Registered
---------	------------------------------

1. Mortgages :
 - a) Numbers
 - b) Value (Rs. in lakhs)
 2. Sales Deeds :
 - a) Numbers
 - b) Value (Rs. in lakhs)
 3. Wills (Numbers)
 4. Money Bonds :
 - a) Numbers
 - b) Value (Rs. in lakhs)
 5. Other Classes :
 - a) Numbers
 - b) Value (Rs. in lakhs)
 6. Total :
 - a) Numbers
 - b) Value (Rs. in lakhs)
-

Source : Inspector-General of

REGISTRATION

8.2

DOCUMENTS REGISTERED

Alleppey District		Kerala State	
1963-64	1964-65	1963-64	1964-65
26070	28390	177974	184312
257.64	226.79	2156.86	2892.18
23069	22300	199492	200969
271.08	308.79	2129.70	2519.51
291	323	4620	5094
780	670	12598	12907
23.94	17.60	111.22	116.20
27669	29578	273252	287546
82.80	236.34	2730.41	2856.48
77879	81261	667936	690828
635.46	789.52	7128.19	8384.37

Registration, Kerala.

VIII. REGISTRATION

Table 8.3

BOOK-WAR DETAILS OF REGISTRATION

Item	Alleppey District			Kerala State
	1964-65	1965-66	1964-65	
1. Number of Sub-Registry Offices	19	19	207	207
2. Book I	79536	89249	656674	713181
3. Book III	362	373	5187	5602
4. Book IV	1363	1620	28967	29089
5. Total	81261	91242	690828	747872
6. Compulsory	71041	81532	585717	643221
7. Optional	10220	9710	105111	104651
8. Total	81261	91242	690828	747872

Source: Inspector-General of Registration, Kerala.

LAW AND ORDER

This section contains information relating to the number of police stations and out posts, sanctioned strength of police, serious crimes in the district, trend of cognizable offences, and the value of property stolen and recovered.

IX. LAW AND ORDER

Table 9.1

NUMBER OF POLICE STATIONS AND OUT POSTS

Taluk / District	Number of Police Stations			Number of Out-Posts		
	1963-64	1964-65	1965-66	1963-64	1964-65	1965-66
Ambalapuzha	3			4		
Chengannur	1			—		
Karthigappally	2			2		
Kuttanad	3			2		
Mavelikara	2			2		
Shertallai	4			4		
Thiruvalla	3			3		
Alleppey District	18			17		

Source:



IX. LAW

Table

SANCTIONED STRENGTH

Year	Number of Superintendents	Number of Assistant Superintendents	Number of Deputy Superintendents	Number of Inspectors
1961	1	1	2	6
1962	1	—	3	6
1963	1	—	3	6
1964	1	1	2	6
1965	1	1	2	6

Source : Inspector General of

AND ORDER

9.2

OF POLICE FORCE

Number of sub- Inspectors	Number of Asst: Sub-In- spectors Jemadars	Number of Head constables	Number of cons- tables	Total
22	3	122	835	992
22	3	121	836	992
24	4	126	916	1080
24	4	126	914	1078
27	4	146	994	1181

Police, Trivandrum.

IX. LAW AND
Table
SERIOUS CRIMES IN

Sl. No.	Item of Crime
1.	Murder
2.	Dacoity
3.	Robbery
4.	House breaking & theft
5.	Cattle theft
6.	Ordinary theft
	Total

Source : Inspector General

ORDER.

9.3

ALLEPPEY DISTRICT

Alleppey District			Kerala State		
1963	1964	1965	1963	1964	1965
7	11	16	204	230	267
—	2	—	3	19	12
3	1	2	39	34	29
159	177	162	1991	2162	2259
5	8	8	133	157	125
181	165	216	2687	2802	2714
355	364	404	5057	5404	5606

of Police, Trivandrum.

IX. LAW

Table

TREND OF COGNIZABLE

Year	Alleppey District		
	Number of Crimes	Variation	Percentage of variation
1950	1333
1961	1103	-230	-17.2
1962	949	-154	-13.95
1963	1048	+99	+10.43
1964	1127	+79	+7.54

Source: Inspector General of

AND ORDER

9.4

OFFENCES

Kerala State		
Number of Crimes	Variation	Percentage of Variation
14070
14289	+219	+1.56
13053	-1236	-8.65
13120	+67	0.51
13791	+671	+5.11

Police, Trivandrum.

IX. LAW AND ORDER

Table 9.5

THE VALUE OF PROPERTY STOLEN AND RECOVERED (RS. IN 1000)

Year	Alleppey District		Percentage
	Stolen	Recovered	
1961	96.16	41.06	42.7
1962	55.79	19.94	35.74
1963	* 101.77	36.39	35.76
1964	62.90	30.90	49.12
1965	74.80	32.73	43.76

Source: Inspector General of Police, Trivandrum.

EDUCATION

Statistics on Education and Literacy have been dealt with in detail in this section.

X.

Table

NUMBER OF LITERATES

Taluk/District	Total Literates	
	1951	1961
Ambalapuzha	110751	149985
Chengannur	92954	117762
Karthigappally	110414	147772
Kuttanad	89638	113517
Mavelikara	109222	140933
Shertalai	124059	158201
Thiruvalla	168323	201760
Alleppey	805361	1029930

Source: Superintendent of

EDUCATION

10.1

IN 1951 AND 1961

Male Literates		Female Literates	
1951	1961	1951	1961
67845	86162	42906	63823
52924	63170	40030	54592
66143	83789	44271	63983
48544	59994	41094	53523
63876	78053	45346	62880
76760	94062	47299	64139
90465	104723	77858	97037
466557	569953	338804	459977

Census Operations, Kerala.

X.

Table

GROWTH OF LITERACY

Taluk/District	Percentage of literates to the total population		Percentage of male literacy	
	1951	1961	1951	1961
Ambalapuzha	50.12	55.54	61.12	64.03
Chengannur	52.35	59.22	59.81	64.57
Karthigappally	47.28	51.96	57.69	60.09
Kuttanad	65.97	67.08	72.01	71.69
Mavelikara	48.42	51.89	57.61	58.58
Shertalai	48.69	50.78	61.32	61.03
Thiruvalla	61.65	66.02	66.55	69.56
Alleppey District	52.94	56.86	61.91	63.79

Source: Superintendent of

EDUCATION

10.2

1951 - 1961

Percentage of female literacy		Difference 1951-1961		
1951	1961	Male Literates	Female Literates	Total
39.02	47.11	+2.91	+8.09	+5.42
44.93	54.04	+4.76	+9.11	+6.87
37.24	44.14	+2.40	+6.90	+4.68
60.01	62.57	-0.32	+2.56	+1.11
39.54	45.45	+0.97	+5.91	+3.47
36.50	40.75	-0.29	+4.25	+2.09
56.80	62.58	+3.01	+5.78	+4.37
44.13	50.12	+1.88	+5.99	3.92

Census Operations, Kerala.

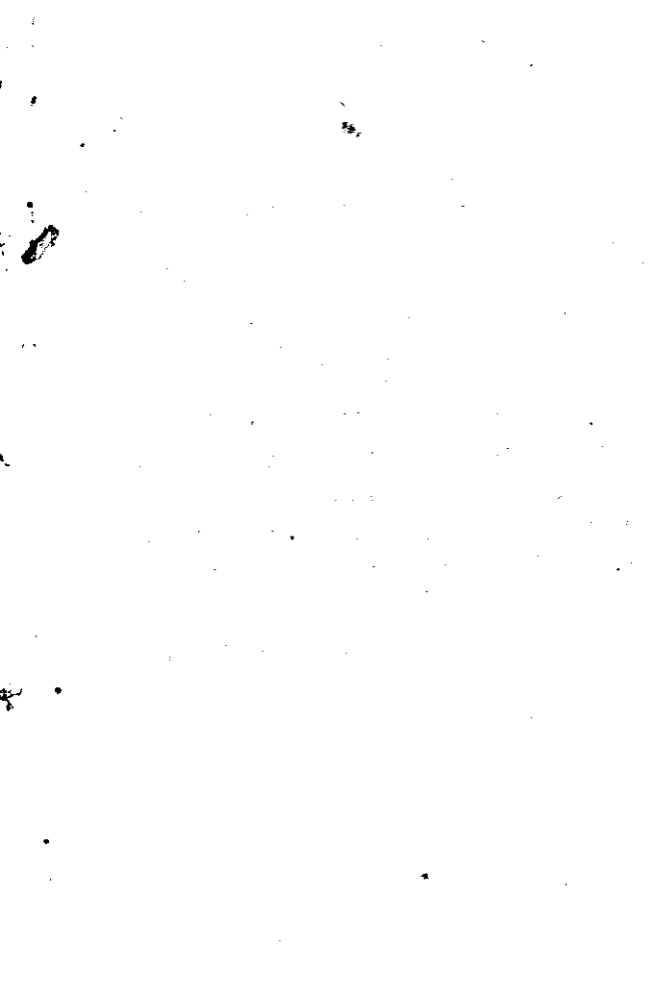
X. EDUCATION

Table 10.3

PROPORTION OF LITERATES—MALE AND FEMALE 1961

District/ State	Total Literates	Percentage of Literates to the total population	Male Literates	Percentage of male literates to total male population	Female Literates	Percentage of female literates to the total female population
Alleppey	1029930	56.86	569953	63.79	459977	50.12
Kerala State	7919220	46.85	4596265	54.97	3322955	38.90

Source: Superintendent of Census Operations, Kerala.



X.

Table

DISTRIBUTION OF HIGH, TRAINING, UPPER

Year	High School			Training Schools		
	Depart- mental	Pri- vate	Total	Depart- mental	Pri- vate	Total
1961-62	26	101	127	4	12	16
1962-63	28	108	136	4	12	16
1963-64	28	108	136	4	14	18
1964-65	30	122	152	4	14	18
1965-66	30	122	152	4	14	18

Source : Administration Report

EDUCATION

10.4

PRIMARY AND LOWER PRIMARY SCHOOLS

U. P. Schools			L. P. Schools			Grand Total
Depart- mental	Pri- vate	Total	Depart- mental	Pri- vate	Total	
64	113	177	272	352	624	944
75	130	205	352	305	657	1014
76	130	206	311	347	658	1018
89	134	223	310	347	657	1050
90	135	225	305	352	657	1052

of Education Department.

Table

STRENGTH IN PRIMARY CLASSES

Year	Government		Private Aided	
	Boys	Girls	Boys	Girls
1961-62	69859	63271	54937	53272
1962-63	71063	64061	57134	54003
1963-64	68642	63618	55848	53251
1964-65	76801	71260	62713	58625
1965-66	80373	72804	59535	56078

Source : Administration Report

EDUCATION

10.5

BY SEX (STANDARD I TO IV)

Private Unaided		Total		Grand Total
Boys	Girls	Boys	Girls	
...	...	124796	116543	241339
99	147	128296	118211	246507
434	488	124924	117357	242281
378	443	139892	130328	270220
509	536	140417	129418	269835

of Education Department, Kerala.

X.

Table

STRENGTH IN UPPER PRIMARY CLASSES

Year	Government		Private Aided	
	Boys	Girls	Boys	Girls
1961-62	25661	21455	43194	37135
1962-63	24406	20371	42704	36131
1963-64	25890	21260	46068	37877
1964-65	26135	24128	46761	41499
1965-66	26187	24292	47409	40814

Source : Administration Report

EDUCATION

10.6

BY SEX (STANDARD V TO VII)

Private Unaided		Total		Grand Total
Boys	Girls	Boys	Girls	
Nil	Nil	68855	58590	127445
13	143	67122	56645	123767
4	174	71962	59311	131273
Nil	211	72896	65838	138734
Nil	257	73596	65363	138959

of Education Department, Kerala.

Table

STRENGTH IN HIGH SCHOOL CLASSES

Year	Government		Private Aided	
	Boys	Girls	Boys	Girls
1961-62	11292	7782	27119	21657
1962-63	13112	9727	31489	29494
1963-64	14554	10147	36218	30659
1964-65	14597	12017	37061	32909
1965-66	14392	12329	38557	34967

Source : Administration Report

EDUCATION

10.7

BY SEX (STANDARD VIII TO X)

Private Unaided		Total		Grand Total
Boys	Girls	Boys	Girls	
Nil	Nil	38411	29439	67850
—	214	44601	39435	84036
—	212	50772	41018	91790
—	209	51658	45135	96793
—	193	52949	47489	100438

of Education Department, Kerala.

X.

Table

DETAILS OF PUPILS AND SCHOOLS IN

District/State	Number of Schools			Government	
	Govern- ment	Pri- vate	Total	Boys	Girls
Alleppey District	3	22	25	98	108
Kerala State	23	126	149	552	594

Source : Administration Report

EDUCATION

10.8

PRE-PRIMARY SECTION - 1965-66

Private Aided		Private Unaided		Total		Grand Total
Boys	Girls	Boys	Girls	Boys	Girls	
288	298	381	398	767	804	1571
2566	2495	1010	1072	4128	4161	8289

of Education Department Kerala.

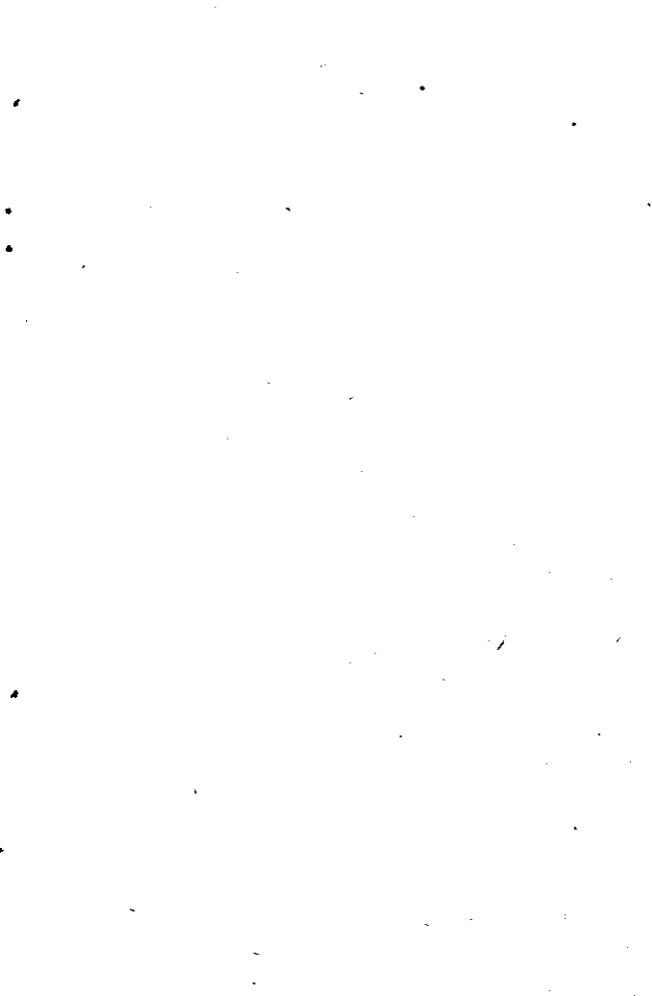
X. EDUCATION

Table 10.9

NUMBER OF PUPILS BENEFITTED BY CARE FEEDING 1965 - 66

Standard	Government		Private		Total		Grand Total
	Boys	Girls	Boys	Girls	Boys	Girls	
I	13526	12239	9778	8525	23304	20764	44068
II	12519	11258	10228	8898	22747	20156	42903
III	10946	10190	8795	8205	19741	18395	38136
IV	9978	8663	8064	7720	18042	16383	34425
Total	46969	42350	36865	33348	83834	75698	159532

Source: Administration Report of Education Department, Kerala.



X.
Table
DISTRIBUTION OF

Type of Schools	Government					
	Trained		Untrained		Trained	
	Men	Women	Men	Women	Men	Women
I HIGH SCHOOLS						
H. S. Section	550	389	27	8	1391	769
U. P. Section	239	247	41	30	618	674
L. P. Section	17	9	3	16
Sub-Total	806	645	68	38	2012	1459
II U.P./S.B. SCHOOLS						
U.P./S.B. Section	591	392	70	52	706	606
L.P./J.B. Section	335	361	5	27	132	283
Sub-Total	926	753	75	79	838	889

EDUCATION

10.10

TEACHERS IN 1965 - 66

		Private Aided		Private Unaided		Total
		Untrained	Trained	Untrained		
Men	Women	Men	Women	Men	Women	
163	148	...	7	...	1	3453
250	250	...	6	...	4	5359
...	2	47
413	400	...	13	...	5	8859
186	157	...	4	2764
6	36	...	4	1189
192	193	...	8	3953

X.
Table

Type of Schools	Government					
	Trained		Untrained		Trained	
	Men	Women	Men	Women	Men	Women
III. L.P./J.B.						
SCHOOLS	1208	1076	66	88	708	1199
IV. TRAINING						
SCHOOLS						
Training Section	22	10	39	23
U.P./S B. Section	9	10	6	5	17	20
L.P./J.B. Section	4	8	...	1	6	10
Sub-Total	35	28	6	6	62	53
Grand Total	2975	2502	215	211	3620	3600

Source : Education

EDUCATION

10.10 (Contd.)

Private Aided		Private Unaided				Total
Untrained		Trained		Untrained		
Men	Women	Men	Women	Men	Women	
35	115	...	10	...	2	4507
1	2	97
8	5	80
...	2	31
9	9					208
649	717	...	31	...	7	14527

Department, Kerala.

X.

Table

NUMBER OF HINDI, MALAYALAM, SANSKRIT
BY SECTION

Language and Section	Government			
	Trained		Untrained	
	Men	Women	Men	Women
High School Section Hindi	34	48	—	2
Upper Primary	24	59	10	35
High School Section Malayalam	136	31	1	—
Upper Primary	2	2	1	1
High School Section Sanskrit	6	—	—	—
Upper Primary	2	2	—	—
High Schools Arabic	3	1	4	—
Upper Primary	19	2	2	—
Lower Primary	—	1	8	—

Source: Education

EDUCATION

10.11

AND ARABIC TEACHERS

1965-66

		Private		Total
		Trained	Untrained	
Men	Women	Men	Women	
107	88	13	71	363
40	60	28	85	341
215	71	105	95	654
27	21	46	22	122
3	—	9	1	19
4	2	8	—	18
—	—	2	—	10
8	1	4	—	36
7	1	1	—	18

Department, Kerala.

X. EDUCATION

Table 10.12

PUPILS STUDYING IN TEACHERS' TRAINING COURSE-1965-1966

District/State	First Year					
	Departmental		Private		Total	
	Men	Women	Men	Women	Men	Women
Alleppey District	122	256	138	457	260	713
Kerala State	1453	1573	1293	2952	2746	4525

X. EDUCATION

Table 10.12 (Contd.)

		Second Year					
Departmental		Private		Total		Grand Total	
Men	Women	Men	Women	Men	Women		
78	232	166	433	244	565		1882
1126	1375	1350	2730	2476	4105		13852

Source: Education Department, Kerala.

X.

Table

SCHOOLS WORKING IN SESSIONAL

District/ State	High Schools			Total
	Number of Schools covered by sessional system	Number of Pupils in		
		Morning Session	Evening Session	
Alleppey District	11	9027	7841	16868
Kerala State	89	59115	53376	112491

Source : Education

EDUCATION

10.13

SYSTEM 1965-66

Upper Primary Schools				
Number of Schools covered by sessional system	Number of Pupil in		Total	Grand Total
	Morning Session	Evening Session		
20	5449	4972	10421	27289
80	29063	25783	54846	167337

Department, Kerala.

X.
Table
SCHOOLS WITH
1965-

Name of Schools

1. Bethany Balikamadam High School,
Nangiarkulam, Alleppey.
 2. St. Mary's High School (Girls),
Kayamkulam.
 3. St. Anne's Girls High School, Chengannur.
 4. Government Basic Training School,
Thiruvalla.
 5. N. S. S. Basic Training School, Othara.
 6. Balikamatom Girls High School, Thiruvalla.
 7. M. G. M. High School, Thiruvalla.
 8. Nicholson Girls High School, Thiruvalla.
 9. St. Thresa's B. C. High School, Chengannur.
 10. Schools for Deaf and Dumb, Thiruvalla.
-

Source : Education

EDUCATION

10.14

HOSTEL FACILITIES

66

Accommodation available	Number of inmates
56	56
70	25
60	58
80	110
30	30
250	263
70	55
350	360
40	30
150	145

Department, Kerala.

Table

COLLEGES FOR

District/State	No. of Colleges including oriental title institutions		No. of University teaching Departments		In colleges (including oriental title institutions)	
	1964-65	1965-66	1964-65	1965-66	Boys	Girls
	2	3	4	5	6	7
Alleppey	10	11	4459	3320
Kerala	89	106	26	26	45940	26995

EDUCATION

10.15

GENERAL EDUCATION

Number of Students						
1964-65						
	In University teaching departments			Total	Grand Total	
Total	Boys	Girls	Total	Boys	Girls	
8	9	10	11	12	13	14
7779	4459	3320	7779
72935	340	180	520	46280	27175	73455

District/State	In colleges (including oriental title Institutions)		
1	Boys	Girls	Total
Alleppey	6601	4867	11468
Kerala	64155	39060	103215

Source : University

EDUCATION

10.15 (Contd.)

1965-66

In University teaching Departments			Total		Grand Total
Boys	Girls	Total	Boys	Girls	
18	19	20	21	22	23
...	6601	4867	11468
514	220	734	64669	39280	103949

of Kerala.

X.

Table

COLLEGES FOR PROFESSIONAL

District/State	Number of Institutions	
	1964-65	1965-66
1	2	2
Alleppey	4	4
Kerala	37	37

Source: 1. University of Kerala
 2. Physical Education Colleges
 and Co-operative College,

EDUCATION

10.16

EDUCATION

Number of Students					
1964-65			1965-66		
Boys	Girls	Total	Boys	Girls	Total
4	5	6	7	8	9
258	221	479	349	260	609
7978	2268	10246	9915	2905	12820

(Trivandrum & Kozhikode)

Trivandrum.

MEDICAL AND PUBLIC HEALTH

This Section gives information on :

1. Distribution of Medical Institution and beds
2. Patients treated in major allopathic hospitals
3. In-patients treated in Ayurvedic and Homeopathic hospitals
4. Out-patients treated in Ayurvedic and Homeopathic hospitals
5. Patients treated in Ayurvedic dispensaries
6. Patients treated in Homeo dispensaries
7. Patients treated in grant in aid and subsidised Ayurvedic dispensaries
8. Working of grant in aid Visha Vydhyaalas
9. Sterilised persons according to religion
10. Sterilised persons according to age and sex.

XI. MEDICAL AND PUBLIC HEALTH

Table 11.1

MEDICAL INSTITUTIONS AND BEDS

Institution	Alleppey District		Kerala State	
	1964-65	1965-66	1964-65	1965-66
MODERN MEDICINE:				
Government Hospitals	10	10	100	101
Primary Health Centre	20	20	149	155
Grant-in-aid institutions	1	1	13	14
Dispensaries including T.B. Clinics	17	17	213	217
Other institutions	4	4
Number of Beds	2149	2221	17636	18526
INDIGENOUS MEDICINE:				
Government Hospitals	6	6	43	45
Government Dispensaries	26	26	219	219
Number of Beds	50	50	883	891

Source: Director of Health Services and Director of Indigenous medicine.

XI. MEDICAL AND PUBLIC HEALTH

Table 11.2

IN-PATIENTS AND OUT-PATIENTS TREATED IN MAJOR HOSPITALS 1964-65

Category	District Hospital Alleppey	W & C Hospital Alleppey
Bed strength	231	212
In-patients treated	10202	8851
Average daily attendance	291	264
Average duration of illness	10.7	11.2
Out-patients treated	173308	173545
Average daily new cases	474	475

Source : Director of Health Services.



XI. MEDICAL AND

Table

IN-PATIENTS TREATED IN

Name of Institution	1954-65					
	Total Treated	No. cured	No. released	No. Other-wise discharged	No. died	No. remaining
Ayurvedic hospital, Alleppey	113	103	103	10
-do- Thiruvalla	268	254	254	...	2	12
-do- Mavelikkara	167	150	150	8	...	9
-do- Sberthalai	133	121	121	2	2	10
-do- Chengannur	135	124	124	1	...	10

Source : Department of

PUBLIC HEALTH

11.3

GOVERNMENT AYURVEDIC HOSPITALS

1965-66							
No. of beds available	Total Treated	No. cured	No. released	No. Other-wise discharged	No. died	No. remaining	No. of beds available
10	140	130	130	10	10
10	285	270	270	15	10
10	167	158	158	9	10
10	148	137	137	..	1	10	10
10	150	140	140	10	10

Indigenous Medicine.

XI. MEDICAL AND
Table

OUT-PATIENTS TREATED IN GOVERNMENT

Name of Institution	1964-65		
	Old cases	New cases	Total Treated
Ayurvedic			
Hospital Alleppey	87382	21756	109135
-do- Thiruvalla	63448	25247	88695
-do- Mavelikkara	42898	20247	63145
-do- Sherthalai	95471	24249	119720
-do- Chengannur	44730	19875	64605
Homeopathic			
Hospital Mavelikkara	38013	14375	52388

Source: Department of

PUBLIC HEALTH

No. 11.4

AYURVEDIC AND HOMEOPATHIC HOSPITALS

1965-66				
Average daily attendance	Old cases	New cases	Total Treated	Average daily attendance
299	69336	30225	99561	271
243	42455	17967	60442	161
173	8460	18651	27111	189
328	90558	24289	114847	315
177	46480	25525	72005	197
144	32625	14476	47101	129

Indigenous Medicine.

XI. MEDICAL AND

Table

PATIENTS (IN AND OUT) TREATED IN AYURVEDIC

District/State	Total persons treated	
	1954-65	1965-66
Quilon	1070211	1052010
Alleppey	1213270	1240648
Kottayam	696184	664438
Ernakulam	966087	1066713
Kerala State	7151078	7293992

Source : Director of Indigenous

PUBLIC HEALTH

11.5

DISPENSARIES IN ALLEPPEY AND ADJACENT DISTRICTS

Average daily attendance		Value of medicine supplied (Rs.)	
1964-65	1965-66	1964-65	1965-66
2928	2910	104801.73	99586.96
3324	3395	118491.37	115220.69
1910	1847	68155.65	72328.67
2645	2914	116287.47	110316.95
19592	19983	960957.14	909117.53

Medicines, Trivandrum.

XI. MEDICAL AND PUBLIC HEALTH

Table 11.6

PATIENTS TREATED IN GOVERNMENT HOMEO DISPENSARIES

Category	Alleppey District		Kerala State	
	1964-65	1965-66	1964-65	1965-66
Total treated	130979	174606	693096	725617
Men	21829	29653	111797	108631
Women	43658	58151	214473	220427
Children	65492	86802	366829	396559
Average daily attendance	359	478	1899	1988
Value of medicine supplied (Rs.)	1199.77	989.84	9927.01	15154.50

Source: Director of Indigenous Medicines, Trivandrum.

XI. MEDICAL AND PUBLIC HEALTH

Table 11.7

PATIENTS TREATED IN GRANT-IN AID AYURVEDIC DISPENSARIES AND
SUBSIDISED DISPENSARIES

Category	Alleppey District		Kerala State	
	1964-65	1965-66	1964-65	1965-66
Total number of patients treated	156963	193408	1100848	1095724
Number of Patients cured	151918	181225	1008457	999824
Number of patients died	126	175	781	1023
Number of patients left of their own accord	2050	7443	21683	35546
Number of patients undergoing treatment at the end of the year	2829	4565	69927	56331

Source : Director of Indigenous Medicines, Trivandrum.

XI. MEDICAL AND PUBLIC HEALTH

Table 11.8

WORKING OF GRANT-IN-AID VISHA VIDHYASALAS

Category	Alleppey District		Kerala State	
	1964-65	1965-66	1964-65	1965-66
Total treated	10591	23530	171330	168124
Treated				
a. Snake bites	3417	9053	38771	41714
b. Other bites	7174	14477	132559	126410
Cured				
a. Snake bites	3378	8742	38071	39702
b. Other bites	7056	13977	128240	120716
Died				
a. Snake bites	...	14	125	142
b. Other bites	...	10	10	18
Under treatment				
a. Snake bites	39	297	575	1760
b. Other bites	118	490	4309	5766

Source: Director of Indigenous Medicines, Trivandrum.

XI. MEDICAL AND PUBLIC HEALTH

Table 11.9

STERILISED PERSONS ACCORDING TO RELIGION IN ALLEPPEY DISTRICT DURING
64-65 & 65-66

Religion	1964-65				1965-66			
	Male		Female		Male		Female	
	No.	%	No.	%	No.	%	No.	%
Hindus								
Christians								
Muslims								
Not recorded								
Total								

Source: District Statistical Officer, Alleppey.

XI. MEDICAL AND

Table

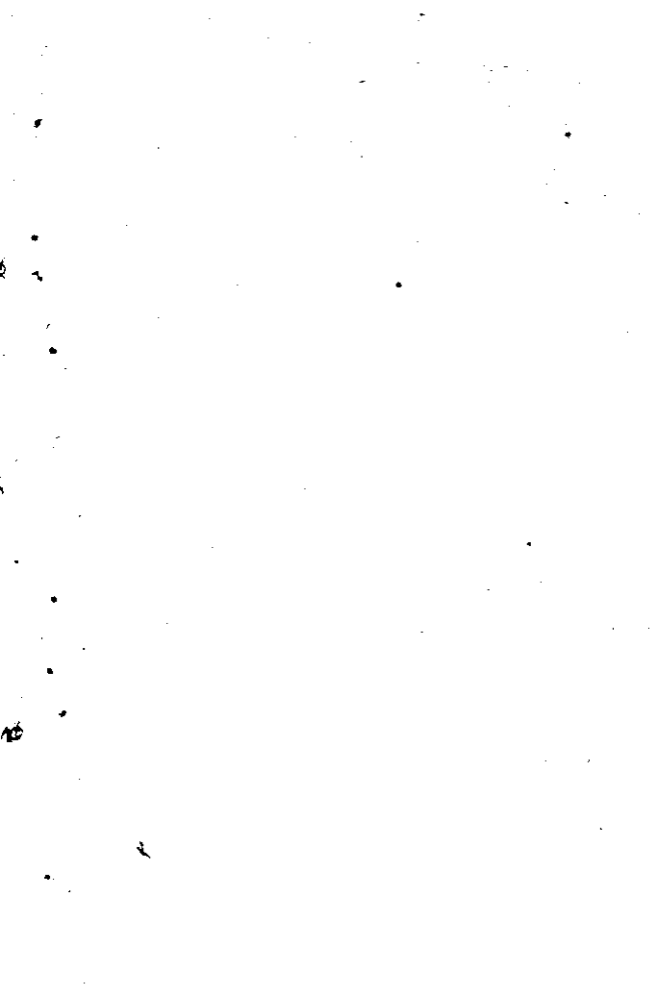
PERSONS STERILISED ACCORDING TO AGE AND SEX

Age Group	1964-65	
	Males Operated	Females operated
	No. % excluding not recorded	No. % excluding not recorded
20-24		
25-29		
30-34		
35-39		
40 and above		
Not recorded		
Total		

TRANSPORT AND COMMUNICATION

Statistics on the following topics are presented in this section.

1. Length of roads
2. Length of railways
3. No. and kind of motor vehicles
4. Operation of road transport corporation buses
5. Fleet utilisation of Road Transport corporation
6. Passengers carried and distance travelled by Road Transport Corporation
7. No. of Post and Telegraph offices
8. Taluk-wise statement of Telephones



XII. TRANSPORT AND

Table

LENGTH OF ROADS

Type of Road

Cement or Concrete
Bituminous or Tarred
Water bound Maccadam
Lower Type
Total

❖ Includes roads under Forest Department,
Note: Roads maintained by Panchayats and
Source: 1. Public Works Department 2. Irri-
4. Municipalities.

COMMUNICATION

12.1

1963-1964 (IN KMS.)

Alleppey District			Kerala State		
Public works Department	❖ Others	Total	Public works Department	❖ Others	Total
10	8	18	193	52	245
214	19	233	4115	452	4567
468	31	499	5667	503	6170
692	204	896	3659	2510	6169
1384	262	1646	13634	3517	17151

Irrigation Department and Municipalities
Kerala Electricity Board have not been included
gation Department 3. Forest Department and

XII. TRANSPORT AND COMMUNICATION

Table 12.2

LENGTH OF RAILWAYS 1965-66 (IN KILOMETRES)

Type of Gauge	Alleppey District K. M.	Kerala State K. M.
Broad gauge	Nil	553
Meter gauge	Nil	335
Mixed gauge	Nil	Nil
Total		888

Source:

XII. TRANSPORT AND COMMUNICATION

Table 12.5

NUMBER AND KIND OF MOTOR VEHICLES ON ROAD AS ON 31-3-66

Sl. No.	Type of Vehicles	Alleppey District	Kerala State
1.	Goods Vehicles	457	8848
2.	State Carriages (Buses)	309	4370
3.	Taxi Cabs	453	4118
4.	Motor Cars	1393	20396
5.	Motor Cycles	475	5231
6.	Auto-Rickshaws	7	323
7.	Tractor Trailer	32	740
8.	Others	7	364
	Total	3133	44390

Source : Transport Commissioner, Trivandrum.

XI. TRANSPORT AND COMMUNICATION

Table 12.4

Description	Alleppey District			Kerala State		
	1963-64	1964-65	1965-66	1963-64	1964-65	1965-66
Number of Routes	30	31	327	530	553	600
Route Distance (Kms.)	1284	1325	1426	16882	17832	19878
Gross Kms. (in lakhs)						
Operated	60.00	61.43	66.27	593.82	608.60	641.81
Effective Kms. (in lakhs)						
Operated	59.87	61.33	66.17	583.61	596.76	633.24
Dead Kms. (in lakhs)						
Operated	0.13	0.10	0.11	10.21	11.84	8.57
% of dead Kms. to effective Kms.	0.2	0.2	0.2	1.7	2.0	1.4

Source : Kerala State Road Transport Corporation

XII. TRANSPORT AND COMMUNICATION

Table 1.25

FLEET UTILISATION OF STATE ROAD TRANSPORT CORPORATION

Item	Alleppey District			Kerala State		
	1963-64	1964-65	1965-66	1963-64	1964-65	1965-66
Number of buses held	78	78	79	739	829	817
Average number of buses held	68.7	73.5	77.2	706.6	781.0	805.2
Buses on road per day	60.7	64.3	69.4	636.5	696.0	720.2
Percentage of fleet utilisation	88.8	85.2	90.3	90.1	88.4	89.3
Average vehicle utilisation in kms.	269.8	258.3	272.1	245.1	231.8	238.4
Average seating capacity of buses	37.2	39.2	40.0	42.0	44.0	44.0

Source : Kerala State Road Transport Corporation

XII. TRANSPORT

Table

NUMBER OF PASSENGERS CARRIED AND DISTANCE

Item	1963-64
Number of Passengers carried	11408576
Average route distance in kms.	42.8
Average distance travelled by a passenger in kms.	14.4
Average earnings per passenger (in paise)	43.1
Number of accidents per lakh of gross km.	1.7
Number of breakdowns per 10,000 effective kms.	1.7

Source : Kerala State Road

AND COMMUNICATION

12.6

TRAVELLED-STATE ROAD TRANSPORT CORPORATION

Alleppey District		Kerala State		
1964-65	1965-66	1963-64	1964-65	1965-66
14053666	17252248	120498263	139906495	158529953
42.7	44.5	31.7	32.2	33.1
13.4	12.6	12.5	12.6	12.5
39.3	37.2	37.5	36.8	37.0
2.0	2.5	2.6	2.6	2.5
1.4	1.3	1.2	1.3	1.1

Transport Corporation

XII. TRANSPORT AND COMMUNICATION

Table 12.7

NUMBER OF POSTS AND TELEGRAPH OFFICES

Details of Offices	1962-63	1963-64	1964-65	1965-66
Number of Post Offices:				
a. Head Offices				
b. Sort Offices				
c. Branch Offices				
Number of combined receiving and Telegraph Offices:—				
a. Head Offices				
b. Sort Offices				
c. Branch Offices				
d. Postal receiving Offices				
Number of letter boxes:—				
a. Urban				
b. Rural				

Source:— Superintendent of Post Offices

XII. TRANSPORT AND COMMUNICATION

Table 12.8

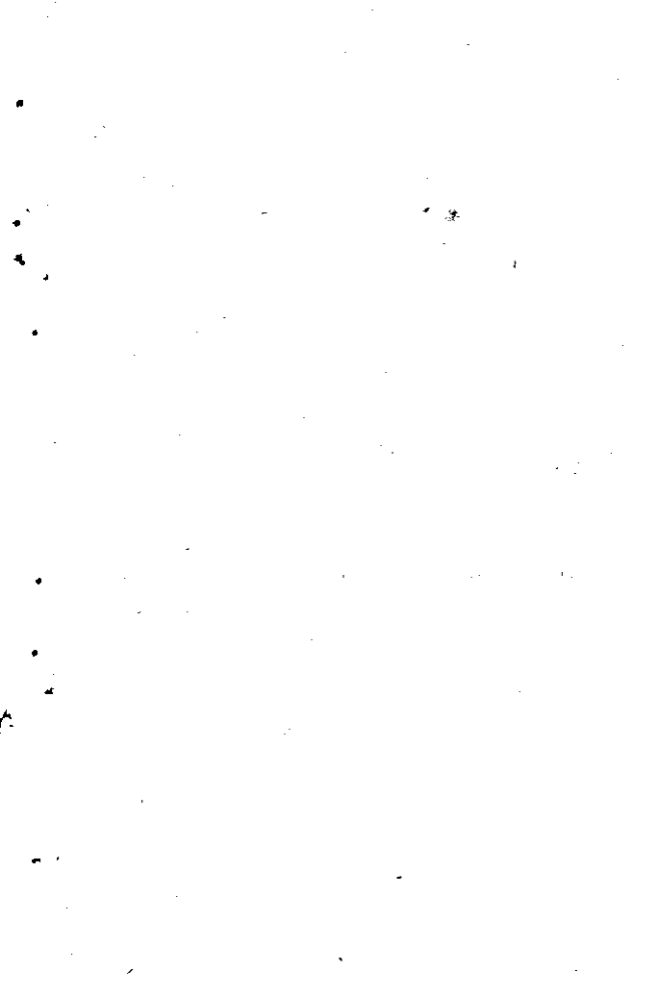
TALUK-WISE STATEMENT OF TELEPHONES

Taluk/District	Number of telephones during			
	1962-63	1963-64	1964-65	1965-66
Ambalapuzha				
Chengannur				
Karthigappally				
Kuttanad				
Mavelikkara				
Sherthalai				
Thiruvalla				
Alleppey District				

Source :

PRICES

This Section gives an idea of the month-wise cost of living index numbers of Alleppey and Sherthalai centres from 1964 to 1966 and also the index numbers of neighbouring centres for comparison. The monthly average retail prices of Alleppey and Sherthalai for 1965 and 1966 are also given. The source for these information is the prices division of the Bureau of Economics and Statistics.



XIII.

Table

CONSUMER PRICE INDEX

Centre	Year	January	February	March	April	May
Alleppey	1964	512	524	528	538	549
	1965	574	572	572	586	593
	1966	646	643	636	680	658
Sherthalai	1964	516	523	524	534	548
	1965	581	579	584	601	611
	1966	648	642	637	649	647

Base: August 1939 = 100

Source: Bureau of Economics

PRICES

13.1

NUMBERS - (MONTHLY)

June	July	August	September	October	November	December
559	553	554	568	576	561	564
598	600	607	603	604	629	643
675	682	680	677	682	688	700
558	549	554	573	588	577	576
617	611	616	621	616	637	647
672	673	671	667	676	684	694

and Statistics

XIII.

Table

* CONSUMER PRICE INDEX NUMBERS

Centre	Year	January	February	March	April	May
Quilon	1965	611	612	611	628	638
	1966	676	668	658	677	686
Alleppey	1965	574	572	572	586	593
	1966	646	643	636	650	658
Sherthalai	1965	581	579	584	601	611
	1966	648	642	637	649	657
Ernakulam	1965	606	603	600	618	630
	1966	674	665	656	674	691
Changana- cherry	1965	597	601	607	613	621
	1966	669	661	650	665	675

Base: August 1939 = 100

Source: Bureau of Economics

PRICES

13.2

COMPARED TO NEIGHBOURING CENTRES

June	July	August	September	October	November	December
640	637	639	643	642	669	678
694	693	700	697	697	692	699
598	600	607	603	604	629	643
675	682	680	677	682	688	700
617	611	616	621	616	637	647
672	673	671	667	676	684	694
632	627	639	639	643	665	677
709	710	717	711	715	723	732
624	625	633	628	630	649	663
693	702	710	710	714	721	727

and Statistics, Kerala.

XIII.
Table

MONTHLY AVERAGE RETAIL PRICES OF

Sl. No.	Name of Commodity	Unit	Alleppey			
			January	February	March	April
1	Corriander	Kg.	2.95	2.41	2.50	2.50
2	Chillies	"	2.69	2.63	2.50	2.46
3	Onions	"	0.51	0.40	0.35	0.39
4	Tamarind	"	1.20	1.00	1.00	1.00
5	Tapioca (Raw)	"	0.30	N.A.	0.29	0.28
6	Greengram	"	1.48	1.40	1.40	1.46
7	Blackgram	"	0.98	0.98	0.98	0.95
8	Dhall	"	2.02	1.93	1.74	1.63
9	Potatoes	"	1.06	0.86	0.79	0.80
10	Brinjal	"	0.83	0.93	0.82	0.94
11	Ladies finger	"	0.84	0.82	0.75	0.69
12	Plantain	"	0.62	0.62	0.64	0.67
13	Mutton	"	4.00	4.00	4.00	4.00
14	Beef	"	1.75	1.75	1.75	1.75

XIII
Table

Sl. No.	Name of Commodity	Unit.	Alleppey			
			January	February	March	April
15	Milk (Cow's)	Litre	0.92	0.92	0.92	0.92
16	Milk (Buff's)	„	1.28	1.28	1.28	1.28
17	Tea	Kg.	5.50	5.50	5.50	5.50
18	Coffee	„	7.00	7.00	7.00	7.00
19	Sugar	„	1.35	1.34	1.35	1.35
20	Jaggery	„	1.18	1.01	0.99	0.94
21	Coconut Oil	Litre	3.01	2.97	3.15	3.47
22	Gingelly Oil	„	3.76	3.76	3.76	3.76
23	Coconut (without husk)	100 Nos.	28.80	29.50	31.25	35.00
24	Firewood (split)	Qtl.	5.50	5.50	5.50	5.50
25	Betel leaves	100 Nos.	0.33	0.35	0.31	0.30
26	Arecanut	„	3.15	3.19	3.47	5.10
27	Tobacco	Kg.	5.00	5.00	5.00	5.00

XIII
Table

MONTHLY AVERAGE RETAIL PRICES

Sl. No.	Name of commodity	Unit				
			Jan.	Feb.	March	April
1	Corriander	Kg.	2.68	1.98	2.00	1.99
2	Chillies	"	2.56	2.53	2.50	2.44
3	Onions	"	0.53	0.41	0.38	0.39
4	Tamarind	"	1.00	1.00	1.00	1.00
5	Tapioca (Raw)	"	0.25	NA	NA	0.25
6	Greengram	"	1.32	1.31	1.30	1.31
7	Blackgram	"	0.95	0.95	0.92	0.93
8	Dhall	"	1.98	1.95	1.78	1.65
9	Potatoes	"	1.05	0.88	0.79	0.78
10	Brinjal	"	0.63	0.65	0.83	0.86
11	Ladies finger	"	0.90	0.87	0.75	0.76
12	Plantain	"	0.62	0.62	0.67	0.68
13	Mutton	"	3.50	3.50	3.50	3.40
14	Beef	"	1.25	1.25	1.25	1.25

Sl. No.	Name of commodity	Unit				
			Jan.	Feb.	March	April
15	Milk (Cow's)	Litre	0.88	0.88	0.88	0.88
16	Milk (Buff's)	„	1.17	1.17	1.17	1.17
17	Tea	Kg.	5.50	5.50	5.50	5.50
18	Coffee	„	7.00	7.00	7.00	7.50
19	Sugar	„	1.35	1.32	1.34	1.34
20	Jaggery	„	1.18	1.02	1.00	0.94
21	Coconut Oil	Litre	2.98	2.94	3.11	3.42
22	Gingelly Oil	„	3.80	3.98	3.98	3.98
23	Coconut (with- out husk)	100 Nos.	28.80	28.75	30.75	34.40
24	Firewood (split)	Qtl.	3.50	3.50	3.50	3.50
25	Betel leaves	100 Nos.	0.56	0.56	0.36	0.40
26	Arecanut	„	3.50	3.56	3.69	4.70
27	Tobacco	Kg.	4.75	4.75	4.75	4.75

XIII.

Table

MONTHLY AVERAGE RETAIL PRICES OF

Sl. No.	Name of Commodity	Unit	Alleppey			
			January	February	March	April
1	Corriander	Kg.	3.20	3.10	3.03	3.10
2	Chillies	"	3.95	3.98	3.65	3.72
3	Onions	"	0.30	0.32	0.43	0.57
4	Tamarind	"	1.75	1.71	1.68	1.75
5	Tapioca (Raw)	"	0.25	0.25	0.24	0.22
6	Greengram	"	1.40	1.42	1.43	1.48
7	Blackgram	"	1.08	1.05	1.06	1.09
8	Dhall	"	1.50	1.50	1.50	1.50
9	Potatoes	"	0.80	0.78	0.76	0.88
10	Brinjal	"	1.06	1.00	1.06	1.01
11	Ladies finger	"	1.25	1.31	0.75	0.75
12	Plantain	"	0.72	0.74	0.75	0.75
13	Mutton	"	4.50	4.50	4.50	4.50
14	Beef	"	1.88	2.00	2.00	2.00

PRICES

13.4 (a)

CERTAIN COMMODITIES - 1966

Centre

May	June	July	August	September	October	November	December
3.00	3.00	3.07	3.12	3.05	3.50	3.50	3.50
4.25	4.56	5.32	6.24	6.52	8.19	7.00	6.83
0.67	0.95	0.94	0.80	0.82	0.91	1.00	1.15
1.75	1.73	1.75	1.75	1.73	1.75	1.75	1.85
0.24	0.25	0.25	0.25	0.24	0.24	0.25	0.25
1.50	1.50	1.50	1.51	1.61	1.60	1.60	1.60
1.13	1.19	1.28	1.41	1.44	1.55	1.60	1.68
1.50	1.50	1.50	1.55	1.60	1.60	1.60	1.60
0.82	0.96	0.86	0.76	0.85	0.80	1.11	1.32
1.00	1.13	0.89	0.91	1.13	1.00	1.16	1.38
0.73	0.75	0.73	0.69	0.71	0.75	0.80	0.94
0.80	0.80	0.72	0.73	0.80	0.80	0.76	0.72
4.50	4.88	5.00	5.00	5.00	5.00	5.00	5.00
2.00	2.00	2.00	2.00	2.20	2.25	2.25	2.25

XIII
Table

Sl. No.	Name of Commodity	Unit.	Alleppey			
			January	February	March	April
15	Milk (Cow's)	Litre	0.92	0.92	0.92	0.92
16	Milk (Buff's)	„	1.28	1.28	1.28	1.28
17	Tea	Kg.	5.75	5.75	5.81	6.00
18	Coffee	„	7.50	7.50	7.50	7.50
19	Sugar	„	1.32	1.32	1.39	1.42
20	Jaggery	„	1.23	1.22	1.19	1.10
21	Coconut Oil	Litre	4.85	4.62	4.14	4.31
22	Gingelly Oil	„	4.43	4.43	4.43	4.43
23	Coconut (without husk)	100 Nos.	46.50	47.25	39.50	42.80
24	Firewood (split)	Qtl.	5.50	5.50	5.50	5.50
25	Betel leaves	100 Nos.	0.56	0.64	0.52	0.52
26	Arecanut	„	3.13	3.25	3.81	4.77
27	Tobacco	Kg.	5.00	5.00	5.00	5.00

XIII
Table

MONTHLY AVERAGE RETAIL PRICES

Sl. No.	Name of commodity	Unit				
			Jan.	Feb.	March	April
1	Corriander	Kg.	2.93	2.83	2.78	2.87
2	Chillies	"	3.96	3.85	3.52	3.72
3	Onions	"	0.30	0.31	0.40	0.54
4	Tamarind	"	1.50	1.50	1.38	1.48
5	Tapioca (Raw)	"	0.20	0.21	NA	NA
6	Greengram	"	1.30	1.32	1.30	1.37
7	Blackgram	"	1.03	1.00	1.03	1.06
8	Dhall	"	1.50	1.50	1.50	1.50
9	Potatoes	"	0.78	0.78	0.71	0.84
10	Brinjal	"	0.75	0.79	0.64	0.66
11	Ladies finger	"	1.07	1.17	0.78	0.72
12	Plantain	"	0.73	0.75	0.75	0.79
13	Mutton	"	3.50	3.50	3.50	3.80
14	Beef	"	1.75	1.75	1.75	1.75

PRICES

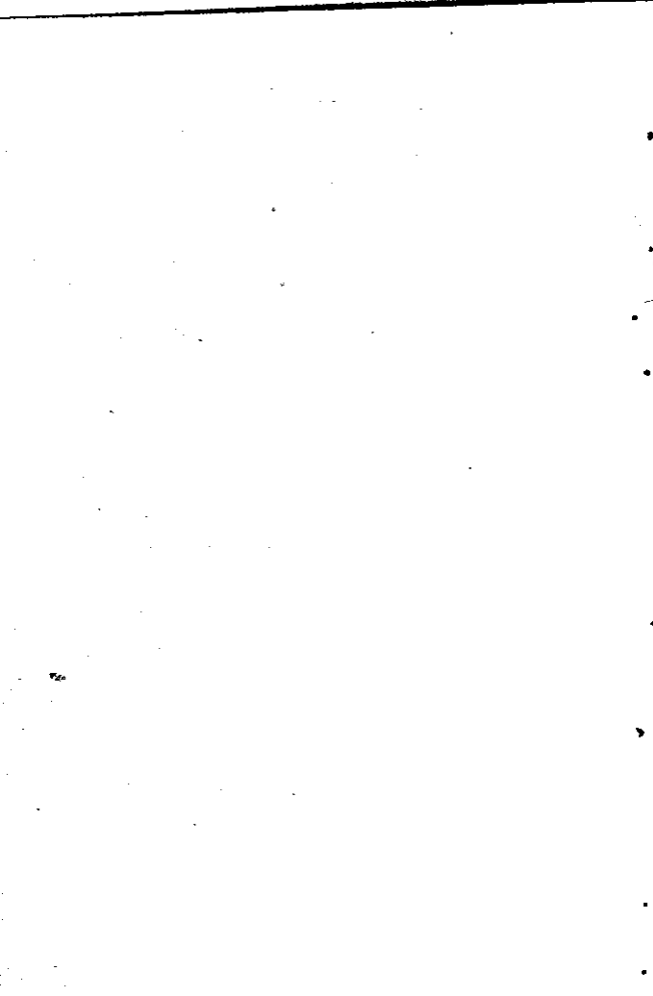
13.4 (b)

OF CERTAIN COMMODITIES-1966

Shertallai Centre							
May	June	July	Aug.	Sept.	Oct.	Nov.	Dec.
2.90	2.90	2.90	2.90	2.85	2.85	2.85	2.84
4.00	4.49	5.28	6.04	6.23	8.10	7.00	6.78
0.66	0.93	0.93	0.78	0.78	0.85	1.00	1.10
1.50	1.50	1.50	1.53	1.60	1.55	1.50	1.58
0.20	0.20	0.20	0.20	0.20	0.20	0.20	0.20
1.50	1.50	1.50	1.51	1.49	1.50	1.50	1.50
1.10	1.16	1.24	1.35	1.37	1.53	1.60	1.60
1.50	1.50	1.50	1.50	1.50	1.50	1.50	1.50
0.83	0.88	0.86	0.79	0.75	0.86	1.11	1.33
0.78	0.75	0.63	0.69	0.65	0.75	0.79	0.94
0.75	0.78	0.81	0.83	0.78	0.78	0.86	1.00
0.80	0.80	0.74	0.73	0.80	0.80	0.75	0.70
4.00	4.00	4.00	4.13	4.50	4.50	4.50	4.50
2.00	2.00	2.00	2.00	2.00	2.25	2.25	2.25

XIII
Table

Sl. No.	Name of commodity	Unit				
			Jan.	Feb.	March	April
15	Milk (Cow's)	Litre	0.92	0.92	0.92	0.92
16	Milk (Buff's)	„	1.28	1.28	1.28	1.28
17	Tea	Kg.	5.50	5.50	5.50	5.50
18	Coffee	„	7.50	7.50	7.63	8.00
19	Sugar	„	1.32	1.32	1.42	1.43
20	Jaggery	„	1.23	1.20	1.19	1.11
21	Coconut Oil	Litre	4.84	4.62	4.12	4.30
22	Gingelly Oil	„	4.65	4.65	4.65	4.65
23	Coconut (with- out husk)	100 Nos.	45.50	47.25	38.75	40.80
24	Firewood (split)	Qtl.	3.75	3.75	3.75	3.75
25	Betel leaves	100 Nos.	0.75	0.65	0.38	0.53
26	Arecanut	„	3.25	3.63	4.06	4.88
27	Tobacco	Kg.	4.75	4.75	4.75	4.75



JOINT STOCK COMPANIES

The number of private and public joint stock companies, according to industrial groups, their authorised and paid up capital for the last three years beginning from 1963-64 are furnished in this section.

XIV. JOINT

Table :

JOINT STOCK COMPANIES

Industrial group

Agriculture and allied activities
Mining and quarrying
Processing and manufacturing of food stuffs
Processing and manufacturing of metals &
Chemicals
Processing and manufacturing of others
Construction and utilities
Commerce, trade and finance
Transport communication and storage
Community and business service
Personal and other services

Total :

Source : Registrar of Joint Stock

STOCK COMPANIES

14.1

AT WORK AS ON 31-3-1964

Private Companies			Public Companies		
No. of Companies	Authorised capital (Rs. in lakhs)	Paid up capital (Rs. in lakhs)	No. of Companies	Authorised capital (Rs. in lakhs)	Paid up capital (Rs. in lakhs)
10	18.50	7.05	21	424.50	234.28
..
22	123.50	40.86	4	110.50	7.62
2	16.00	5.35	5	35.00	12.19
2	2.00	.22	3	4.50	1.21
..
17	55.35	24.15	12	122.00	33.27
4	116.00	32.53	1	5.00	.77
..
3	11.00	6.66	1	2.00	.06
60	342.35	116.82	47	703.50	289.40

Companies, Ernakulam.

XIII. JOINT

Table

JOINT STOCK COMPANIES

Industrial Group	No. of Compa- nies
Agriculture & Allied Activities	10
Mining and Quarrying	..
Processing and manufacture of foodstuffs	22
Processing and manufacture of metals & chemicals	4
Processing and manufacture of others	1
Construction and Utilities	..
Commerce, Trade and Finance	18
Transport, Communication & Storage	4
Community and Business Service	..
Personal and Other Service	3
Total	62

Source: Registrar of

STOCK COMPANIES

No. 14.2

AT WORK AS ON 31-3-1965

Private Companies			Public Companies		
Authorised Capital (Rs. in lakhs)	Paid-up Capital (Rs. in lakhs)	No. of Companies	Authorised Capital (Rs. in lakhs)	Paid-up Capital (Rs. in lakhs)	
18.50	7.94	20	418.50	232.62	
...	
123.50	41.31	4	110.50	7.67	
23.00	7.24	6	40.00	12.19	
1.00	0.20	3	4.50	1.21	
...	
66.65	24.59	12	122.00	33.27	
116.20	32.53	1	5.00	0.77	
...	
11.00	6.66	1	2.00	0.06	
359.85	120.47	47	702.50	287.79	

Joint Stock Companies, Ernakulam.

XIV. JOINT

Table

JOINT STOCK COMPANIES

Industrial Group	No. of Compa- nies
Agriculture & Allied activities	10
Mining and Quarrying	..
Processing and manufacture of foodstuffs	21
Processing and manufacture of	
Chemicals and Metals	4
Processing and manufacture of others	2
Construction and Utilities	...
Commerce, Trade and Finance	16
Transport, Communication & Storage	3
Community and Business Service	...
Personal and Other Services	3
Total	59

Source : Registrar of

STOCK COMPANIES

No. 14-3

AT WORK AS ON 31-3-1966

Private companies			Public companies	
Authorised Capital (Rs. in lakhs)	Paid-up Capital (Rs. in lakhs)	No. of Companies	Authorised Capital (Rs. in lakhs)	Paid-up Capital (Rs. in lakhs)
18.50	7.94	19	408.50	231.93
...
122.50	41.25	4	110.50	7.72
23.00	7.61	6	40.00	12.19
1.20	0.20	3	4.50	1.21
...
61.70	22.55	12	122.00	33.26
16.00	4.37	1	5.00	0.77
...
11.00	6.66	1	2.00	0.06
253.90	90.58	46	692.50	287.14

Joint Stock companies, Ernakulam.

LOCAL BODIES AND CO-OPERATION

This portion gives information relating to the statistics on local bodies, N. E. S. Blocks and Co-operative movement.

XV. LOCAL BODIES AND CO-OPERATION

Table 15.1

NUMBER OF PANCHAYATS AND POPULATION

District/State	Number of Panchayats		Population	
	1961	1966	1961 Census (in lakhs)	1966 Estimated (in lakhs)
Alleppey District	94	94	18.11	20.01
Kerala State	922	921	169.04	191.37

Source: (1) Director of Panchayats.

(2) Bureau of Economics and Statistics.

XV. LOCAL BODIES

Table

INCOME OF

Items

House tax
Service taxes
Surcharge on building tax
Profession tax
Vehicle tax
Entertainment tax
Show tax
Income from markets
Land cess
Licence fees
Miscellaneous receipts
Total (Rs. in lakhs)

Source : Director of

AND N. E. S. BLOCKS

15.2

PANCHAYATS

Alleppey		Kerala	
1963-64	1964-65	1963-64	1964-65
222325	433925	3998184	5902894
1429	3421	51241	194466
...	...	3665	2731
116373	175026	1334291	1891043
44209	62706	308758	440199
64143	41535	1122941	1059503
6020	9282	135050	155108
78563	94604	808709	934255
19035	133114	164397	1314899
72003	80566	1099804	1190759
166455	98966	3436442	2921071
7.91	11.33	124.63	160.07

Panchayats, Kerala.

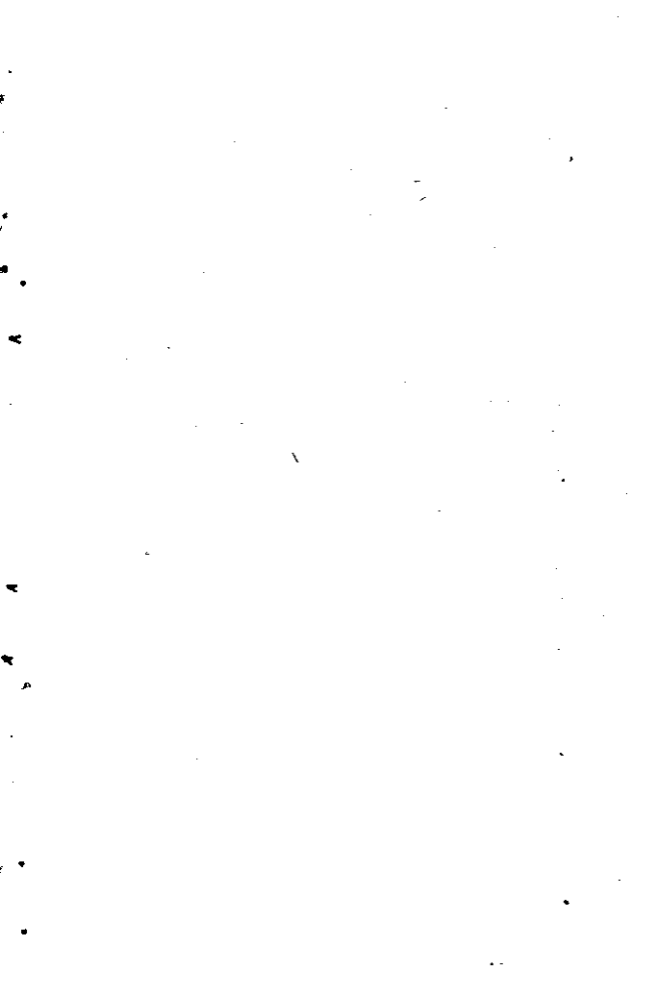
XV. LOCAL BODIES AND CO-OPERATION

Table: No. 15.3

EXPENDITURE OF PANCHAYATS (R.s. IN THOUSANDS)

District/State	Expenditure		Closing balance
	1963-64	1964-65	
Alleppey District	1516.90	1508.63	615.27
Kerala State	17493.27	20139.03	10274.50
			15160.23

Source : Director of Panchayats.



XV. LOCAL BODIES

Table :

N. E. S. Blocks

Name of Blocks in Alleppey District	Block Headquarters
1. Ambalapuzha	Kallercode
2. Aryad	Kalavoor
3. Veliyanad	Kumarankary
4. Koipuram	Pullad
5. Mavelikara	Mavelikara
6. Pulikeezh	Valanjavattam
7. Mallappally	Mallappally
8. Kanjikuzhy	Kanjikuzhy
9. Chengannur	Puliyoor
10. Haripad	Haripad
11. Pattanakkad	Pattanakkad
12. Bharanikavu	Bharanikavu
13. Kulanada	Kulanada
14. Muthukulam	Muthukulam
15. Thycattusseri	Thycattusseri
16. Pandalam	Pandalam
17. Champakulam	Champakulam

AND CO-OPERATION

No. 15.4

GENERAL INFORMATION

Nearest Post Office	Year of Opening
Sanathanapuram	October 1953
Kalavoor	October 1955
Kumarankary	do
Pullad	October 1953
Mavelikara	April 1954
Pulikeezh	October 1954
Mallappally West	April 1956
S. L. Puram	October 1956
Puliyoor	April 1957
Haripad	October 1957
Pattanakkad	April 1960
Pallickal	October 1960
Kulanada	April 1961
Cheppad	October 1961
Thycattusseri	October 1961
Pandalam	April 1962
Moncompu	June 1963

XV. LOCAL BODIES AND CO-OPERATION

Table 15.5

N. E. S. BLOCKS & PANCHAYATS

1 Name of N. E. S. Block	2 Name of Taluk	3 Name of Panchayats
Ambalapuzha	Ambalapuzha	Purakkad Punnapra Ambalapuzha
Aryad	Ambalapuzha	Aryad Mararikulam South Mannancherry
Veliyanad	Kuttanad	Pulinkunnu Muttar Ramankary Veliyanad Neelemperoor Kavalam

XV. LOCAL BODIES AND CO-OPERATION
Table 15.5 (Contd.)

1	2	3
Koilpuram	Thiruvalla	Koilpuram Thottapuzhassery Ayroor Ezhumattoor Eraviperoor Puramattom Thekkekara Thazhakar Thriperumthura Chettikulangara Niranam Kuttapuzha
Mavelikara	Mavelikara	Peringara Nedumpuram Kadapra Kuttoor
Pulikeezh	Thiruvalla	

XV. LOCAL BODIES AND CO-OPERATION
Table 15.5 (Contd.)

1	2	3
Mallappally	Thiruvalla	Kaviyoor Kunnamthanam Kalloopara Mallappally Anikad Kottangal Kottanad Mararikulam North Kanjikuzhy Muhamma Thanneermukkom Shertallai South Thiruvandoor Pandanad Chengannur Ala Cheriyannadu Bhudhannoor Puliyoor Mannar
Kanjikuzhy	Shertallai	
Chengannur	Chengannur	

XV. LOCAL BODIES AND CO-OPERATION
Table 15.5 (Contd.)

1	2	3
Haripad	Karthigappally	Haripad Kumarapuram Karuvatta Thrakkunnapuzha Karthigappally Chingoli Pallippad Cheruthana Veeyapuram Aroor Ezhupunna Kodamthuruthu Kuthiyathodu Thuravoor Pattanakkad Vayalar Kadakkarakappally
Pattanakkadu	Shertallai	

XV. LOCAL BODIES AND CO-OPERATION
Table 15.5 (Contd.)

1	2	3
Bharanikavu	Mavelikara	Bharanikavu Vallikkunnam Chunnakara Thamarakulam
Kulanada	Chengannur	Kulanada Aranmula Mulakuzha Mezhuvelli Venmony
Muthukulam	Karthigappally	Muthukulam Arattupuzha Pathiyoor Cheppad Kaudalloor
Thycattusseri	Sertallai	Thycattusseri Chennam Pallipuram Panavalli Mattathilbhagam

XV. LOCAL BODIES AND CO-OPERATION
Table 15.5 (Contd.)

1	2	3
Pandalam	Mavelikara	Pandalam - Thonalloor Pandalam - Thekkekara Thumbamon
Champakulam	Kuttanad	Noornad Palamel Thakazhy Edathua Thalavady Nedumudy Champakulam Kainnakary

Source: District Statistical Officer, Alleppey.

XV. LOCAL BODIES

Table

INCOME OF MUNICIPALITIES

Name of Municipality	1964-65			
	Municipal rates and taxes	Other receipts	Total income	Opening balance
Kayamkulam	159.76	82.64	242.40	129.65
Mavelikara	94.10	116.30	210.40	61.21
Thiruvalla	93.41	91.07	184.48	134.35
Alleppey	868.34	506.65	1374.99	391.47
Shertalai	126.59	99.02	225.61	48.00

Source :

AND CO-OPERATION

No. 15.6

(RS. IN THOUSANDS)

1965-66

Grand Total	Municipal rates and taxes	Other receipts	Total income	Opening balance	Grand Total
372.05	192.71	176.36	369.07	155.60	524.67
271.61	120.45	52.42	172.85	116.70	289.25
318.83	104.75	95.79	200.54	135.38	335.92
1766.46	942.69	452.51	1395.20	468.63	1863.83
273.61	132.61	127.68	260.29	55.67	315.96

Municipalities

XV. LOCAL BODIES

Table

EXPENDITURE OF MUNICIPALITIES

Name of Municipality	1964-65			
	Current ex- penditure	Capital ex- penditure and others	Total ex- penditure	Closing Balance
Kayamkulam	51.06	80.05	131.11	155.60
Mavelikara	94.02	60.89	154.91	116.70
Thiruvalla	92.71	90.74	183.45	135.38
Alleppey	783.42	514.41	1297.83	468.63
Shertalai	124.89	93.05	217.94	55.67

Source :

AND CO-OPERATION

No. 15.7

(RS. IN THOUSANDS)

1965-66					
Grand total	Current expenditure	Capital expenditure and others	total expenditure	Closing balance	Grand total
286.71	202.18	142.06	344.24	180.43	524.67
271.61	129.45	62.44	191.89	97.66	289.55
318.83	148.04	138.52	286.56	49.36	335.92
1766.46	923.24	377.68	1300.92	562.92	1863.84
273.61	134.50	92.46	226.96	89.00	315.96

Municipalities.

XV. LOCAL BODIES

Table :

NUMBER OF CO-OPERATIVE SOCIETIES, MEMBERSHIP

As on 30-6-1965

Type of Society	No. of societies	Membership	Paidup share capital	Reserve and other funds	Deposits & borrowings
1. Central Co-operative Banks	1	400	21.54	4.63	74.52
2. Primary Land Mortgage Banks	2	1923	0.94	N	14.58
3. Agricultural credit Societies (Large and small).	377	164664	53.83	13.70	118.44
4. Non-agricultural credit Societies	30	11656	3.36	1.92	7.37
5. Primary Marketing Societies	6	926	2.34	1.20	3.92
6. Milk Supply Unions	1	193	0.06

AND CO-OPERATION

No. 15.8

AND WORKING CAPITAL. (AMOUNT IN RS. LAKHS)

AS ON 30-6-1966						
Working capital	No. of Societies	Member-ship	Paidup share capital	Reserve and other funds	Deposits & borrowings	Working capital
100.69	1	423	23.15	5.8	72.94	96.67
15.62	2	2187	1.38	...	24.21	25.59
185.97	352	168316	60.73	14.92	126.59	202.24
12.65	33	14295	4.87	2.14	9.6	7.97
7.46	6	1088	2.93	1.20	3.91	8.04
0.06	1	23	0.06	0.06

XV. LOCAL BODIES

Table:

As on 30-6-1965					
Type of Society	No. of societies	Member ship	Paidup share capital	Reserve and other funds	Deposits & borrowings
7. Milk Supply Societies	12	1001	0.22	0.04	0.10
8. Egg and poultry Societies	20	1166	0.19	0.02	0.23
9. Farming Societies					
(a) Joint Farming	38	3312	1.95	0.06	3.06
(b) Collective Farming	2	262	0.02	N	0.03
10. Irrigation Societies	1	112	0.02	N	N
11. Sugar factories	1	3511	0.04	...	0.14
12. Wholesale stores	1	5002	1.81	0.05	5.58
13. Primary consumer's Co-operative Stores	21	4355	0.68	0.19	1.46
14. Housing Societies	62	328	0.32	...	1.06

AND CO-OPERATION

No. 15.8 (Continued)

As on 30-6-1966						
Working capital	No. of societies	Member ship	Paidup share capital	Reserve and other funds	Deposits & borrowings	Working capital
0.36	14	1419	0.26	N	0.05	0.31
0.44	23	1839	0.10	N	0.27	0.37
5.07	34	2658	1.51	0.06	1.76	3.34
0.06	1	117	0.01	N	0.03	0.04
0.02
0.18	1	4355	40.83	...	158.81	199.64
7.44	1	5059	2.48	0.05	5.53	8.06
2.33	24	3856	0.82	0.34	1.54	2.70
1.38	5	279	0.38	...	1.31	1.69

XV. LOCAL BODIES

Table :

Type of Society	As on 30-6-1965				
	No. of societies	Member-ship	Paidup share capital	Reserve and other funds	Deposits & borrowings
15. Weaver's Societies	2	313	0.03	0.01	...
16. Other Industrial Societies	2	206	0.02	0.01	...
17. Fishermen Co-operative Societies	68	13652	0.24	0.26	1.71
18. Other Non-credit Societies					
(a) Agricultural	24	2960	0.59	0.09	0.74
(b) Non-agricultural	122	43709	2.34	2.61	1.53
19. Supervising Unions	7	575
20. Harijan Societies	21	1517	0.36	N	0.68

N - Below thousand Rs. Source :

AND CO-OPERATION

15.8 (Contd.)

As on 30-6-1966

Working capital	No of societies	Member ship	Paidup share capital	Reserve and other funds	Deposits & borrowings	Working capital
0.04	2	313	0.03	0.01	...	0.04
0.03	3	649	0.07	0.03	...	0.10
2.21	75	13652	1.35	N	2.25	3.60
1.42	18	2554	0.56	0.05	0.56	1.17
6.48	121	55284	2.52	3.15	0.91	6.58
...	7	575
1.04	20	2085	0.30	0.07	0.14	0.51

Registrar of Co-operative Societies.

XV. LOCAL BODIES

Table

AGRICULTURAL CREDIT SOCIETIES-

 Category

Short Term

1. Seasonal Agricultural Operations (Seeds, fertilisers included)
2. Purchase of Agricultural Implements
3. Marketing crops
4. Industrial purposes (of direct benefit to agriculture)
5. Consumption loans
6. Other purposes

Total

Medium Term :

1. Sinking of or repairs to wells
2. Purchase of Machinery (Pumps set etc.)
3. Purchase of cattle
4. Minor Improvements to lands
5. Other Agricultural purposes
6. Others

Total

 Source : Co-operative

AND CO-OPERATION

15.9

LOANS ISSUED IN 1964-65 (Rs. in '000)

Alleppey District	Kerala State
3697.51	59028.85
16.76	3934.68
118.50	1652.52
106.61	1065.06
154.07	4399.39
112.92	7839.46
<u>4206.37</u>	<u>77919.96</u>
245.58	1791.11
248.44	1784.02
240.85	2156.85
1865.05	11290.45
2104.00	9209.71
1410.86	5529.62
<u>6114.78</u>	<u>31761.76</u>

Department, Trivandrum.

XV. LOCAL BODIES

Table

HARIJAN SOCIETIES

Category

1. Number of Societies
 2. Number of Members
 3. Paid-up Share Capital
 4. Statutory Reserve
 5. Other Reserves
 6. Deposits
 7. Other Borrowings
 8. Investments
 9. Land and Building
 10. Loans advanced
 11. Loans recovered
 12. Loans outstanding
 13. Over due
 14. Value of fertilizers distributed
 15. Value of consumer goods sold
-

Source : Co-operative

AND CO-OPERATION

15.10

1964-65 (amount in '000 Rs.)

Alleppey District	Kerala State
21	345
1517	31278
35.83	282.12
...	16.69
0.90	60.34
2.36	28.63
65.76	1047.02
5.34	128.98
...	24.88
30.58	312.34
19.79	163.13
47.06	595.99
14.20	238.40
9.74	248.42
283.87	2353.79

Department, Trivandrum.

XV. LOCAL BODIES

Table

HARIJAN SOCIETIES - LOANS

Sl. No.	Item
Short Term	
1	Seasonal agricultural operations (seeds and fertilisers included)
2	Purchase of agricultural implements
3	Consumption loans
4	Other purposes
5	Total
Medium Term	
1	Sinking of or repair to wells
2	Purchase of cattle
3	Minor improvements to lands
4	Other agricultural purposes
5	Others
	Total

Source: Co-operative

AND CO-OPERATION

15.11

ISSUED (1964-65) (in Rs.)

 Alleppey District

 Kerala State

1100	115398
...	5900
...	8298
...	41483
1100	171079
...	13010
...	12116
...	46915
730	7980
28750	61243
29480	141264

Department, Trivandrum.

XV. LOCAL BODIES

Table

MILK SUPPLIES

Sl. No.	Item
1	Total number of Societies
2	Number of members
3	Paid up share capital
4	Reserve and other funds
5	Total borrowings
6	Other liabilities
7	Fixed assets
8	Loans outstanding
9	Of which overdues
10	All other assets
11	Value of milk purchased
12	Value of sales
13	Loans advanced
14	Loans recovered
15	Cost of management
16	Number of societies working at profit
17	Profit for the year
18	Number of societies working at loss
19	Loss for the year

Source: Co-operative

AND CO-OPERATION

15.12

SOCIETIES, 1964-65

	Alleppey District	Kerala State
	12	234
	1001	26288
	22413	400032
Rs.	3889	133601
"	9988	424208
"	23314	1324295
"	6746	389484
"	11347	352881
"	3236	55787
"	34837	1565383
"	103347	8242910
"	112835	8756436
"	9200	448917
"	3212	358126
"	15294	728809
—	3	114
Rs.	1738	153246
—	9	100
Rs.	8412	60844

Department, Trivandrum.

EXCISE

This section deals with

1. No. of toddy shops with area and population
2. No. of trees tapped and tree tax collected
3. No. of arrack shops and quantity of arrack issued
4. Licence fee on foreign liquors
5. D. C. B. of abkari revenue under arrack
6. Excise duty on arrack and cocobrandy
7. D. C. B. of abkari revenue under toddy
8. D. C. B. of abkari revenue under tree tax
9. Particulars of rentals obtained in the auction sale of abkari shops.

XVI. EXCISE

Table 16.1

NUMBER OF TODDY SHOPS WITH POPULATION AND AREAS FOR THE YEAR 1965-66.

Taluk/District	Population-1965 estimated (in lakhs)	Area in Sq. K. M.	No. of Shops	Population per shop
Ambalapuzha	2.92	178.7	40	7300
Chengannur	2.16	201.2	25	8640
Karthikappally	3.09	234.7	33	9364
Kuttanad	1.84	266.0	36	5111
Mavelikara	2.95	288.8	24	12292
Sherthallai	3.38	320.4	69	4899
Thiruvalla	3.31	344.2	27	12259
Alleppey	19.65	1834.0	254	7736

Source: 1. Bureau of Economics and Statistics, Trivandrum.

2. Excise Department, Trivandrum.

XVI.

Table:

NUMBER OF TREES TAPPED

Alleppey District		
Year	Coconut Nos.	Choondapana Nos.
1961-62	36956	69
1962-63	37819	54
1963-64	39104	48
1964-65	40977	57
1965-66	42629	70

Source : Excise

EXCISE

No. 16.2

AND TREE-TAX COLLECTED

Kerala State			
Tree-tax (Rs.000)	Coconut Nos.	Choondapana Nos.	Tree-tax (Rs.'000)
370.94	192230	22968	2381.66
379.27	193823	22787	2893.97
391.63	198236	23343	2448.85
410.91	206727	23582	2436.31
427.69	206085	24065	2541.35

Department, Trivandrum.

XVI.

Table

NUMBER OF ARRACK SHOPS AND QUANTITY

Year	Alleppey District	
	Number of shops	Arrack P.L.
1961-62	47	46205.25
1962-63	47	44791.50
1963-64	47	46088.00
1964-65	47	47141.20
1965-66	47	48371 40

Source : Excise

EXCISE

No. 16.3

OF ARRACK ISSUED FOR CONSUMPTION

Quantity consumed		Average sale per shop
Cocobrandy P. L.	Total P. L.	
2090.80	48296.05	1027.58
1283.71	46074.91	980.32
1149.83	47237.83	1005.06
1575.655	48717.155	1036.54
1688.60	50060.00	1065.11

Department, Trivandrum.

XVI.

Table:

LICENCE FEE ON FOREIGN

Kind of fee

1. Tavern
2. Wholesale Licence Fee
3. Licence fee for the sale of medicated wine
4. Restaurant Licence Fee
5. Licence fee for the sale of foreign liquors
in clubs
6. Gallonage fee collected

TOTAL

Source: Excise

EXCISE

No. 16.4

LIQUORS, WINE ETC. (IN RS.)

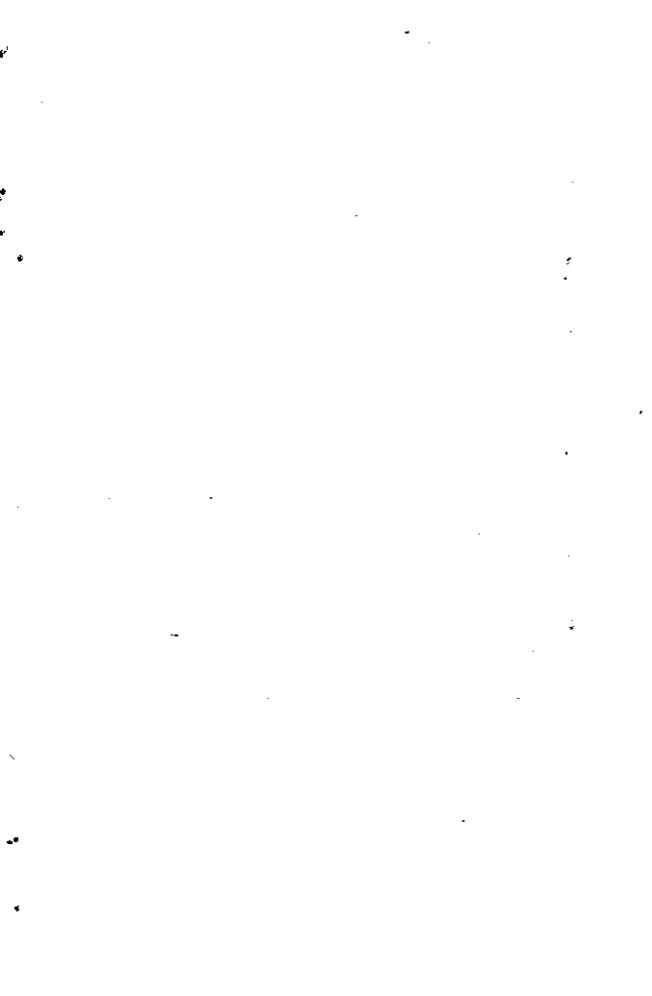
Alleppey District		Kerala State	
1964-65	1965-66	1964-65	1965-66
66700	67000	539244	576700
16000	8000	208000	196000
...
...	...	81000	105000
500	500	3500	4000
71923.55	102705.01	1613795.19	2024156.47
155123.55	178205.01	2466539.19	2905856.47

Department, Kerala.

XVI. EXCISE
Table 16.5
STATEMENT SHOWING DEMAND, COLLECTION AND BALANCE OF ABKARI
REVENUE UNDER ARRACK. (RS. IN '000)

Taluk/District	1963-64			1964-65		
	Demand	Collection	Balance	Demand	Collection	Balance
Ambalapuzha	126.10	126.10	..	130.10	130.10	..
Chengannur	47.25	47.25	..	60.25	60.25	..
Karthigappally	60.20	60.20	..	66.35	66.35	..
Kuttanad	8.05	8.05	..	8.20	8.20	..
Mavelikara	117.75	117.75	..	130.05	130.05	..
Sherthallai	26.10	26.10	..	29.90	29.90	..
Thiruvalla	55.95	55.95	..	67.75	67.75	..
Alleppey	441.40	441.40	..	492.60	492.60	..

Source: Excise Department, Kerala



XVI.

Table :

TALUK-WISE DETAILS OF EXCISE DUTY

Taluk/District	1963-64		
	Duty on arrack & coco- brandy	Commi- ssion on Arrack	Licence fee of Excise depots
Ambalapuzha	32.54	...	0.01
Chengannur	23.21
Karthigappally	14.77	0.40	...
Kuttanad	2.53	0.07	...
Mavelikara	53.07	3.78	...
Shertallai	12.45	0.16	...
Thiruvalla	22.99	2.24	...
Alleppey	161.56	6.65	0.01

Source : Excise Department,

EXCISE

16.6

COLLECTED ON ARRACK AND COCOBRANDY

(Rs. '000)

1964-65				
Total	Duty on arrack & coco- brandy	Commis- sion on Arrack	Licence fee on Excise depots	Total
32.55	35.57	0.63	0.02	36.22
23.21	23.90	...	0.02	23.92
15.17	27.11	3.03	...	30.14
2.60	2.93	2.93
56.85	47.51	0.44	...	47.95
12.61	13.44	1.80	...	15.24
25.23	23.73	3.41	...	27.14
168.22	174.19	9.31	0.04	183.54

Kerala.

XVI.

Table

TALUK-WISE STATEMENT OF DEMAND, COLLECTION

Taluk / District	1963-64	
	Demand	Collection
Ambalapuzha	714.00	714.00
Chengannur	288.35	287.35
Karthigappally	519.20	511.19
Kuttanad	403.05	399.87
Mavelikara	359.00	335.06
Shertallai	798.00	798.00
Thiruvalla	384.50	376.17
Alleppey	3466.10	3421.64

Source: Excise

EXCISE

No. 16.7

AND BALANCE OF ABKARI REVENUE UNDER TODDY
(Rs. '000)

1964-55			
Balance	Demand	Collection	Balance
...	1008.40	1008.40	...
1.00	409.85	409.85	...
8.01	644.80	635.69	9.11
3.18	479.70	476.64	2.76
23.94	394.90	393.40	1.50
...	1166.30	1165.77	0.53
8.33	512.95	511.88	1.07
44.46	4616.90	4601.93	14.97

Department, Kerala.

XVI.

Table

TALUK-WISE STATEMENT OF DEMAND, COLLECTION

Taluk/District	1963-64	
	Demand	Collection
Ambalapuzha	72.56	72.56
Chengannur	29.95	29.95
Karthigappally	47.87	47.87
Kuttanad	53.41	53.01
Mavelikara	29.75	29.75
Shertallai	112.91	112.91
Thiruvalla	45.55	45.55
Alleppey	392.00	391.60

Source : Excise

EXCISE

16.8

AND BALANCE OF ABKARI REVENUE UNDER TREE-TAX
(Rs. in '000)

1964-65			
Balance	Demand	Collection	Balance
...	75.83	75.83	...
...	31.95	31.95	...
...	50.34	50.34	...
0.40	54.31	54.31	...
...	35.34	35.34	...
...	114.95	114.95	...
...	48.19	48.19	...
0.40	410.91	410.91	...

Department, Kerala.

XVI.

Table

TALUK-WISE PARTICULARS OF RENTALS OBTAINED

Taluk/District	Rental for Toddy shop		Increase of
	1963-64	1964-65	
Ambalapuzha	714.00	1008.40	294.40
Chengannur	288.35	409.85	121.50
Karthigappally	519.20	644.80	125.60
Kuttanad	403.05	479.70	76.65
Mavelikara	359.00	394.90	35.90
Shertallai	798.00	1166.30	368.30
Thiruvalla	384.50	512.05	127.55
Alleppey	3466.10	4616.00	1149.90

Source: Excise

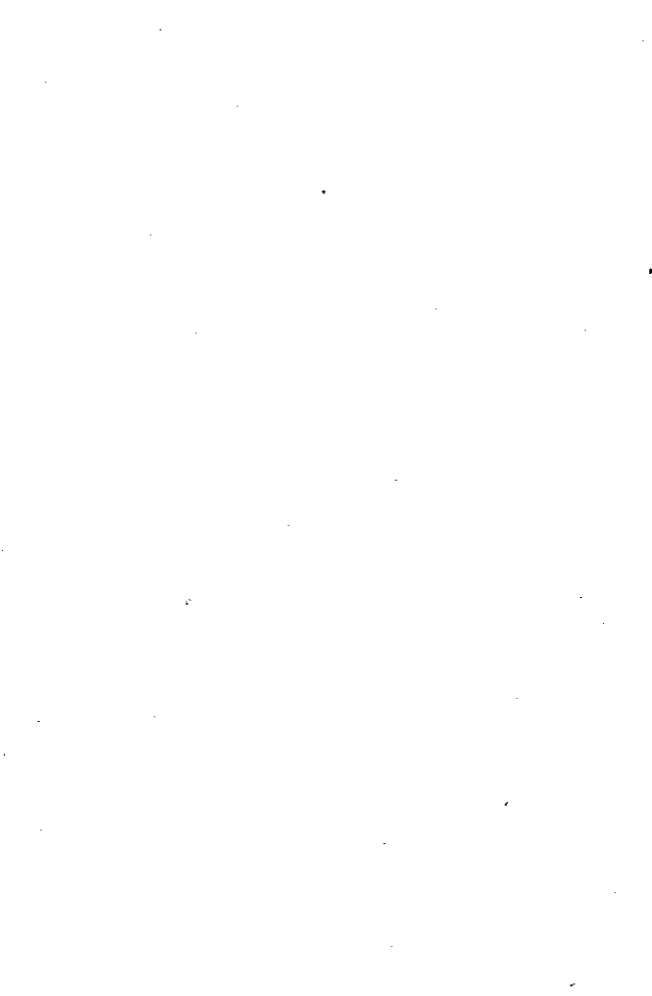
EXCISE

16.9

IN THE AUCTION SALES OF ABKARI SHOPS
(Rs. in '000)

Arrack shop for		Increase of	Foreign liquor for		Increase of	Total Increase
1963- 64	1964- 65		1963- 64	1964- 65		
126.10	130.10	4.00	19.00	20.00	1.00	299.40
47.25	60.25	13.00	10.80	11.85	1.05	135.55
60.20	66.35	6.15	14.05	14.05	...	131.75
8.05	8.20	0.15	76.80
117.75	130.05	12.30	48.20
26.10	29.90	3.80	6.65	6.80	0.15	372.25
55.95	67.75	11.80	12.00	13.00	1.00	140.35
441.40	492.60	51.20	62.50	65.70	3.20	1204.30

Department, Kerala.



SALESTAX

Details regarding the number of registered dealers under General Salestax, particulars of non-assessees, notices, issued under agricultural Incometax, receipts under Central Salestax arrears under Salestax, Agricultural Incometax, etc. are presented in this Section.

XVII.

Table

NUMBER OF DEALERS REGISTERED UNDER THE

Year	Number of registered dealers at the beginning of the year.		
	Total number.	Number renewed.	Number not renewed.
1960-61	4071	3914	157
1961-62	4620	4315	305
1962-63	5093	4545	548
1963-64	5369	5030	339
1964-65	7188	6758	430

Source : Agricultural Incometax and

SALESTAX

17.1

GENERAL SALESTAX ACT, IN ALLEPPEY DISTRICT

Number of dealers registered during the year.	Number cancelled or transferred.	Number at the end of the year.	Registration fee realised (Rs.)
706	157	4620	28518.75
788	315	5093	30496.00
401	125	5369	30716.00
2390	571	7188	66395.32
897	589	7496	63752.50

Salestax Department, Kerala.

XVII.

Table

STATEMENT OF PARTICULARS

Year	Alleppey District		
	No. of registered dealers who were not assesseees	No. of non-assesseees who collected tax	Amount of tax collected (Rs.)
1960-61	2863	494	44971.02
1961-62	3304	621	63378.91
1962-63	3226	267	39910.25
1963-64	3750	220	30415.70
1964-65	3593	240	27132.15

Source: Agricultural Incometax and

SALESTAX

17.2

OF NON-ASSEESSEES

Kerala State		
No. of registered dealers who were not assessees.	No. of non-assesseees who collected tax.	Amount of tax collected (Rs.)
20193	3230	254235.64
21681	2701	217093.35
22033	1919	223401.66
24146	1854	193954.96
22253	2066	234066.81

Salestax Department, Kerala.

XVI.

Table:

NUMBER OF NOTICES ISSUED

Year	Alleppey District			
	No. of notices issued	No. of notices served	No. of returns received	No. of assessments made
1960-61	1216	1097	977	1617
1961-62	1313	1246	1120	1888
1962-63	1639	1525	1389	2401
1963-64	1717	1543	1280	2023
1964-65	1732	1679	1650	1989

Source : Agricultural Incometax and

SALESTAX

No. 17.3

UNDER AGRICULTURAL INCOMESAX

Kerala State			
No. of notices issued	No. of notices served	No. of returns received	No. of assessments made
21541	20102	18797	22019
22990	22447	21861	22716
21350	21105	19891	20274
21616	21139	19895	20992
19516	19282	18049	22069

Salestax Department, Kerala

XVII.

Table

MISCELLANEOUS RECEIPTS UNDER

Year	Alleppey District		Total
	Penalty realised Rs.	Other receipts if any Rs.	
1960-61	57.86	587.00	644.86
1961-62	85.76	1637.75	1723.51
1962-63	2082.00	8616.49	10698.49
1963-64	...	2740.16	2740.16
1964-65	...	3843.53	3843.53

Source: Agricultural Incometax and

SALESTAX

17.4

CENTRAL SALESTAX

Kerala State		
Penalty realised Rs.	Other receipts if any Rs.	Total
1070.41	19859.74	20930.15
10141.70	42062.90	52204.60
9649.10	49280.93	58930.03
4302.26	43565.66	47867.92
7372.25	56297.95	63670.20

Salestax Department, Kerala.

XVI. SALESTAX

Table 17. 5

YEAR-WISE BREAK-UP OF ARREARS UNDER SALESTAX PENDING COLLECTION
(GENERAL SALESTAX, SURCHARGE AND CENTRAL SALESTAX AS ON 31st MARCH 1965)

Year	Alleppey District Rs.	Kerala State Rs.
Upto 1950-51	33962.48	905697.61
1950-51	56006.75	374156.55
1951-52	207443.34	682011.97
1952-53	173876.51	659998.82
1953-54	89916.69	703752.56
1954-55	44818.32	1165637.17
1955-56	50152.14	1282064.11
1956-57	202942.63	1078241.79

XVI. EXCISE

Table 17.5 (Contd.)

Year	Alleppey District Rs.	Kerala State Rs.
1957-58	88398.20	1465234.80
1958-59	104364.30	2130642.58
1959-60	108822.17	2410410.29
1960-61	204933.53	3349651.79
1961-62	404632.13	4127989.74
1962-63	448507.41	4219093.94
1963-64	436968.09	4117438.22
1964-65	329334.38	9228731.01
Total	2985082.07	37900752.95

Source: Agricultural Incometax and Salestax Department, Kerala.

XVII. SALESTAX

Table 17.6

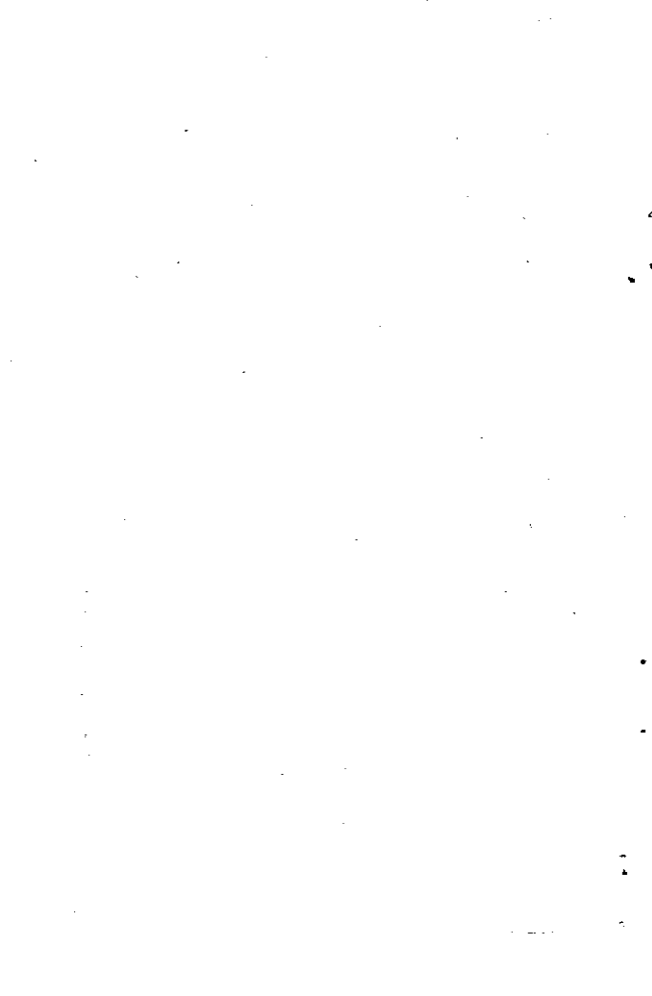
YEAR-WISE BREAK-UP OF ARREARS UNDER AGRICULTURAL INCOMETAX PENDING
COLLECTION AS ON 31ST MARCH 1965

Year	Alleppey District Rs.	Kerala State Rs.
Upto 1950-51	3868.49
1950-51	1815.45
1951-52	3371.52	7412.92
1952-53	6267.64	27467.81
1953-54	4652.42	55442.68
1954-55	20818.13	64207.69
1955-56	12236.03	53762.26

XVII. SALESTAX
Table 17.6 (Contd.)

Year	Alleppey District	Kerala State
	Rs.	Rs.
1956-57	17960.66	48468.05
1957-58	16488.73	36714.70
1958-59	22469.34	56535.37
1959-60	26044.51	185045.98
1960-61	31256.78	278055.76
1961-62	65009.35	468658.27
1962-63	91924.06	871460.84
1963-64	91011.91	1872519.66
1964-65	321532.56	4248548.57
Total	731093.64	8279984.50

Source: Agricultural Incometax and Salestax Department, Kerala.



HOUSING

This section gives an idea of the number of occupied houses, number of persons per occupied house, growth of housing, distribution of households according to material of roof, wall, number of rooms, tenure, etc. as available from 1961 census.

XVIII.

Table

NUMBER OF OCCUPIED RESIDENTIAL HOUSES 1961-

Taluk/District	No. of Houses		
	Rural	Urban	Total
Shertalai	51336	5532	56868
Ambalapuzha	23156	22197	45353
Kuttanad	28414	...	28414
Thiruvalla	47537	3826	51363
Chengannur	31087	3542	34629
Karthigappally	37402	10242	47644
Mavelikkara	43801	4919	48720
Alleppey	262733	50258	312991

Source : Superintendent of

HOUSING

18.1

RURAL & URBAN IN ALLEPPEY DISTRICT

No. of Households		
Rural	Urban	Total
51950	5578	57528
23353	23540	46893
29408	...	29408
47966	3926	51892
31896	3792	35688
38647	10653	49300
44081	5032	49113
267301	52521	319822

Census Operations, Kerala.

XVIII.

Table

VARIATION IN OCCUPIED CENSUS

Census year	Total		
	Number	Percentage decade variation	Number
1921	175575	—	158617
1931	209146	+ 19.12	189076
1941	237553	+ 13.58	213754
1951	264764	+ 11.45	229566
1961	312991	+ 18.22	262733

Source : Superintendent of Census

HOUSING

18.2

HOUSES IN ALLEPPEY DISTRICT 1961

Rural		Urban	
Percentage decade variation	Number	Percentage decade variation	
—	16958	—	
+ 19.20	20070	+ 18.35	
+ 13.05	23799	+ 18.58	
+ 7.40	35198	+ 47.90	
+ 14.45	50258	+ 42.79	

Operations, Kerala.

XVIII. HOUSING

Table 18.3

NUMBER OF PERSONS PER 1000 OCCUPIES HOUSES FROM 1921 TO 1961
IN ALLEPPEY DISTRICT

Census Year	Persons per 1000 occupied houses	
	Total	Urban
1921	5180	4655
1931	5406	5502
1941	5363	5494
1951	5746	5927
1961	5787	5177

Source : Superintendent of Census Operations, Kerala.

XVIII. HOUSING

Table 18.4

PERSONS PER OCCUPIED CENSUS HOUSE BY TALUKS IN ALLEPPEY DISTRICT-1961

Taluk	Persons per occupied census house		
	Total	Rural	Urban
Ambalapuzha	5.88	5.65	6.13
Chengannur	5.73	5.67	6.23
Karthigappally	5.96	5.86	6.32
Kuttanad	5.94	5.94	Nil
Mavelikkara	5.53	5.50	5.78
Shertalaj	5.46	5.45	5.59
Thiruvalla	5.90	5.89	6.10

Source : Superintendent of Census Operations, Kerala.

DISTRIBUTION OF CENSUS HOUSES BY CATEGORIES

Category of Census houses

Total number of census houses

Vacant Census house

Occupied census houses used as :

1. Dwellings
 2. Shop-cum-dwellings
 3. Workshop-cum-dwellings
 4. Hotels, Sarais, Dharmasalas, Tourist houses and inspection homes
 5. Shops excluding eating houses
 6. Business houses and Offices
 7. Factories, Workshop and Worksheds
 8. Schools and other educational institutions, including Training classes, Coaching and Shop Classes
-

HOUSING

18.5

AND BY RURAL AND URBAN AREAS 1961.

Distribution of 1000 census houses.			Distribution of 1000 census houses between rural and urban	
Total	Rural	Urban	Rural	Urban
1000	1000	1000	819	181
70	68	82	789	211
817	833	743	835	165
3	3	3	850	150
3	3	N	980	20
N	N	2	190	810
46	40	74	708	292
6	4	17	523	477
19	16	32	695	305
5	5	6	784	216

XVIII.

Table

Category of Census houses

9. Restaurants, Sweetmeat shops and eating places
 10. Places of entertainment and Community Gathering
 11. Public health and medical institutions, hospitals, health Centres, Doctor's Clinics, Dispensaries, etc.
 12. Others
-

Source: Superintendent of Census

N - Negligible

HOUSING

18.5 (Contd.)

Distribution of 1000 census houses			Distribution of 1000 census houses between rural and urban	
Total	Rural	Urban	Rural	Urban
19	19	18	824	176
1	1	1	772	228
—	—	—	—	—
8	6	17	612	388

Operations, Kerala.

1149

318

XVIII.

Table

DISTRIBUTION OF 1000 HOUSEHOLDS

Taluk/District	Total	
	Owned	Rented
Ambalapuzha	863	137
Chengannur	977	23
Karthigappally	974	26
Kuttanad	956	44
Mavelikkara	966	34
Shertalai	987	13
Thiruvalla	965	35
Alleppey	956	44

Source : Superintendent of Census