



DISTRICT
STATISTICAL HAND BOOK

CANNANORE

1966

ISSUED BY

The Bureau of Economics & Statistics,
Government of Kerala,
Trivandrum.

DES
LIBRARY

013-023.

DISTRICT
STATISTICAL HANI
CANNANORE

Issued by

The Bureau of Economics & Statistics

Kerala

1971

P R E F A C E

“The District Statistical Hand Book, Cannanore 1966” is the 8th in a series of nine District Statistical Hand Books proposed to be brought out by this Bureau.

Data collected at the District level under the supervision of Shri N. O. Kumaran, District Statistical Officer, Cannanore, data available in the various publications of this Bureau and in Administration Reports of sister Departments have been made use of for this publication.

This publication has been prepared by Shri C. R. Parameswaran, Research Officer, assisted by Shri N.K. Vamadevan, Compiler, under the guidance of Shri P. P. Philipose, Deputy Director, (Planning and Co-ordination Division) of this Bureau.

It is hoped that the District Statistical Hand Books may go a long way in filling up the gaps in the availability of District-wise statistical information.

Suggestions for the improvement of the publication are welcome.

Dr. P. K. GOPALAKRISHNAN,
Director,
Bureau of Economics & Statistics.

Trivandrum,
8-7-1969.

CONTENTS

A - Cannanore District

B - Cannanore District at a glance
and comparison with Kerala

C - Tables

Section I. Area and Population

Table No.	PAGE
1.1 (a) Population by taluks (1961 census)	32
1.1 (b) Rural and Urban population by taluks (1961 census)	34
1.2 Population by natural regions (1961 census)	36
1.3 Growth of population by rural urban classification in Cannanore District (1961 census)	38
1.4 Taluk-wise growth rate of population in Cannanore District (1961 census)	39
1.5 Rate of population growth of Cannanore District with adjacent districts (1961 census)	40

	PAGE
1.6 (a) Density by natural regions (per sq. kilometres)	42
1.6 (b) Density by taluks (per sq. kilometres) 1961 census	44
1.7 Rural Urban population by taluks and by sex in Cannanore District (1961)	46
1.8 Sex ratio of Cannanore District by rural urban classification	48
1.9 Sex ratio of Cannanore District and Kerala 1901 - 1961	49
1.10 Sex ratio by Industrial Classification 1961	50
1.11 (a) Sex ratio of Cannanore District by religion 1961	52
1.11 (b) Sex ratio of Cannanore District by age group 1961	53
1.12 (a) Percentage age distribution of population by sex in Cannanore District (1961)	54
1.12 (b) Percentage distribution of Population of Cannanore District by broad age groups (1961)	56

	PAGE
1.13 Population of Cannan ore District by religion (1961)	57
1.14 (a) Population by marital status and sex (1961)	58
1.14 (b) Percentage distribution of population by marital status and sex (1961)	60
1.15 Working population by work status 1961-Cannanore District	61
1.16 Persons not at work classified by sex and type of activity 1961-Cannanore District	62
1.17 Estimated population of Cannanore District and Kerala 1951 - 1966	64
1.18 Population land ratio in Cannanore District and Kerala State 1960-61	66
1.19 Towns, Villages and households in Cannanore District (1961)	68
1.20 Revenue Village according to population 1961	70

	PAGE
1.21 Population of Scheduled Castes and Scheduled tribes (1961 census)	72
Section II. Housing	
2.1 Variation of occupied houses in Cannanore District	76
2.2 Persons per 1000 occupied houses in Cannanore District from 1921 to 1961	78
2.3 Persons per occupied census house by taluk 1961	79
2.4 Census houses by categories and by rural urban in Cannanore District 1961	80
2.5 Taluk-wise distribution of 1000 households according to status of tenures and by rural and urban 1961	84
2.6 Taluk-wise distribution of 1000 households by material of wall of their dwellings 1961	86
2.7 Taluk-wise distribution of 1000 households according to material of roof 1961	88

	PAGE
2.8 Taluk-wise distribution of 1000 households according to number of rooms 1961	90
2.9 Number of persons per room and persons per household in Cannore District 1961	91
2.10 No. of occupied residential houses per sq. mile and per sq. km. in Cannanore District	92
Section III. Medical and Public health	
3.1 Medical Institutions and beds	94
3.2 In and Out patients treated in T. B. Sanatorium, Pariyaram in Cannanore District 1962-63 to 1965-66	96
3.3 (a) Patients treated in Ayurvedic Hospitals of Cannanore District during 1965-66	98
3.3 (b) Patients treated in Ayurvedic dispensaries of Cannanore District during 1965-66	100
3.4 Persons sterilised according to age and sex	102

	PAGE
3.5 Sterilised persons according to religion	104
Section IV. Rainfall	
4.1 Average annual rainfall at rain recording centres in Cannanore District during 1965 & 66	108
4.2 Average monthly rainfall (in m. m.) in Cannanore District	110
4.3 Average annual rainfall (in m. m.) in Cannanore District and Kerala State (July to June)	112
Section V. Agriculture	
5.1 Classification of area	114
5.2 Area and important crops	116
5.3 Production of important crops	118
5.4 Index number of Agricultural Production	120
5.5 Estimated area and yield of dry paddy (in Kg. per hectare)	124
5.6 Classification of Soil of Cannanore District	126
5.7 List of paddy seed farms and Research Stations	127

	PAGE
5.8	Important markets for agricultural commodities 128
5.9	Agricultural implements-1961 130
5.10	Agricultural labourers of Cannanore District and Kerala State by sex 1961 census 132
5.11	Index number of Agricultural Productivity (Base 1956-57). 133
Section VI. Livestock and veterinary	
6.1	Livestock population of Cannanore District and Kerala State 1961 and 1966 138
6.2	Livestock slaughtered in municipalities of Cannanore District 1965 and 1966 140
6.3	Livestock treated in Veterinary Institutions of Cannanore District 142
6.4	Livestock population of Cannanore District and Kerala 1961 and 1966 144
6.5	Veterinary Hospitals and dispensaries 148

Section VII. Forests

- | | | |
|-----|---|-----|
| 7.1 | Area of Reserved Forests and Reserved Lands 1965-66 | 151 |
| 7.2 | Out turn of major forest produce in 1965-66 | 152 |
| 7.3 | Area of forest plantations in 1965-66 | 153 |

Section VIII. Electricity

- | | | |
|-----|------------------------------------|-----|
| 8.1 | Number of Consumers of Electricity | 155 |
|-----|------------------------------------|-----|

Section IX. Labour and Employment

- | | | |
|---------|---|-----|
| 9.1 | Number of Registered factories in Cannanore District and Kerala State | 158 |
| 9.2 | Employment in registered factories of Cannanore District and Kerala State | 164 |
| 9.3 | Employment in plantation-Cannanore District | 170 |
| 9.3 (a) | Employment in the estates-Cannanore District (daily average) | 171 |
| 9.3 (b) | Employment in Coffee estates-Cannanore District (daily average) | 172 |

	PAGE
9.3 (c) Employment in Rubber estates -Cannanore District (daily average)	174
9.4 Industrial disputes, workers involved and mandays lost by industry in Cannanore District	176
9.5 (a) Number of applicants placed in employment through Cannanore Employment Exchange during 1964-65 and 1965-66	178
9.5 (b) Number of applications on the live register of employment exchanges according to broad occupational groups as on 31-12-1965 and 31-12-1966	180
9.6 (a) Distribution of workers by indu- strial category and sex in Can- nanore District (1961 Census)	182
9.6 (b) Working population of Canna- nore District and Kerala State by industrial category 1961	184
9.7 Distribution of nonworkers of Cannanore District by age group-1961	186

		PAGE
9.8	Workers (excluding cultivators and Agricultural labourers) by occupational division Cannanore District 1961 Census	188
9.9	Distribution of 1000 persons in each taluk into workers and non-workers by sex-1961	190
9.10	Distribution of 1000 workers in each taluk by sectors of Industry and sex (1961)	192
9.11	Taluk-wise occupational distribution of population of Cannanore District-1961	194
9.12	Rural agricultural wages (daily averages) in Cannanore District and Kerala State	196
Section X. Joint stock companies		
10.1	Joint stock companies at work as on 31-3-1964 in Cannanore District	200
10.2	Joint stock companies at work as on 31-3-1965 in Cannanore District	202

	PAGE
10.3 Joint stock companies at work as on 31-3-1966 in Cannanore District	204
Section XI. Local bodies and Co-operative movement	
11.1 Income and Expenditure of muni- cipalities in Cannanore District	207
11.2 N. E. S. Blocks in Cannanore District as on 31st March 1966	208
11.3 N. E. S. Blocks and Panchayats	210
11.4 Income of Panchayats	212
11.5 Number and membership of Co- operative Societies in Cannanore District	224
Section XII. Transport and Communication	
12.1 Length of Roads	230
12.2 Railways as on 1965-66	232
12.3 Statement showing the number of vehicles put on road and tax collected during 1965-66	234
12.4 Statement showing the number of motor vehicles registered in Cannanore District Kerala State as on 31-3-1966	236

	PAGE	
12.5	Number of post and telegraph Offices in Cannanore District	238
Section XIII. Law and order		
13.1	Serious crimes in Cannanore District and Kerala State	242
13.2	Police Stations and out-posts in Cannanore District	244
13.3	Number of prohibition offences in Cannanore District and Kerala State	245
13.4	Property stolen and recovered in Cannanore District	148
13.5	Trend of Cognizable crimes in Cannanore District and Kerala State	250
13.6	Sanctioned strength of police in Cannanore District	252
Section XIV. Registration		
14.1	Registration of documents in Can- nanore Distrit during 1965-66	256
14.2	Book-war details of Registration during 1965-66 in Cannanore District and Kerala State	258

- 14.3 Registered documents according to category and value 1965-66 260

Section XV. Salestax

- 15.1 Statement showing Demand, Collection, Remission and Balance under General Salestax (including surcharges) for the years 1964-65 and 1965-66 in Cannanore District and Kerala State 264
- 15.2 Statement showing Demand, Collection, Remission and Balance under surcharges on General Salestax for the year 1964-65 and 1965-66 268
- 15.3 Statement showing Demand, Collection, Remission and Balance under General Salestax for the year 1964-65 and 1965-66 272
- 15.4 Statement showing the classification of assessees according to the grade of turnover assessed to Salestax during the year 1964-65 and 1965-66 276

- 15.5 Statement showing the number of assesseses and the Agricultural Income tax levied, on the different classes of persons assessed to agricultural income tax during the year 1964-65 and 1965-66 278
- 15.6 Statement showing the number of dealers registered under the General Sales Tax Act 1963 in Cannanore District 280
- 15.7 Statement showing analysis of Revenue under General Sales Tax during the year 1964-65 and 1965-66 in Cannanore District and Kerala State 282
- Section XVI. Education
- 16.1 (a) Taluk-wise literacy - 1961 Census 286
- 16.1 (b) Population and number of literates and educated persons in Cannanore District and Kerala State - 1961 288

	PAGE
16.2 Educational Institutions in Cannanore District and Kerala State 1665-66	290
16.3 (a) Enrolement in classes I to XI by sex in Cannanore District and Kerala State 1961-62, 1962-63 and 1963-64	292
16.3 (b) Standard-wise strength by sex in schools Cannanore District and Kerala State during 1964-65	296
16.3 (c) Standard-wise strength in schools-Cannanore District 1965-66	298
16.4 Colleges for general education	300
16.4 (a) Colleges for professional education	304
16.5 Distribution of teachers in schools-Cannanore District 1965-66	306
16.6 Number of Hindi, Malayalam, Tamil, Sanskrit, Arabic and Kannada teachers in Cannanore District during 1965-66	310
16.7 Number of pupils benefited by CARE Feeding Cannanore District 1965-66	312

Section XVII. Prices

- | | | |
|----------|--|-----|
| 17.1 | Monthly cost of living index numbers of Kozhikode (whole for Malabar area) centre | 316 |
| 17.2 | Annual average living index numbers of Kozhikode (whole for Malabar area) Centre and neighbouring places | 318 |
| 17.3 (a) | Monthly average-Retail prices- in Cannanore Centre during 1965 | 320 |
| 17.3 (b) | Monthly average-Retail prices- in Kasaragod centre during 1965 | 324 |
| 17.3 (c) | Monthly average-Retail prices- in Cannanore Centre in Cannanore District during 1966 | 328 |
| 17.3 (d) | Monthly average Retail prices- in Kasaragod Centre in Cannanore District during 1966 | 332 |
| 17.4 | Monthly average wholesale prices in Cannanore District during 1965 | 336 |

Section XVIII. Miscellaneous

- | | | |
|------|---|-----|
| 18.1 | Loan application received, sanctioned and amount disbursed by the Kerala Financial Corporation as on 31-3-1966 for Cannanore District | 341 |
| 18.2 | Small Savings collection in Cannanore District | 342 |
| 18.3 | Number of printing presses, newspapers and periodicals in Cannanore District | 344 |
| 18.4 | Reading rooms and libraries in Cannanore District and Kerala State | 346 |
| 18.5 | Receipts and disposal of applications under various schemes for social benefit in Cannanore District during 1964-65 and 1965-66 | 348 |
| 18.6 | Number of Thandapers, as on 1st April 1966 in Cannanore District and Kerala State | 350 |

	PAGE
18.7 Demand, Collection and Balance of various land tenures in Cannanore District and Kerala State	352
18.8 Number and amount of cheques cleared through the State Bank of India and Travancore-Cannanore and Kerala State	355
18.9 Number & tonnage of vessels	358

CANNANORE DISTRICT

The Cannanore District is the northern most district of Kerala. Consequent on the re-organisation of States and the formation of the Kerala State on 1st November, 1956, the Malabar district except Laccadive and Minicoy Islands; and the Kasaragode taluk of the south Kanara district of the Madras State were transferred to Kerala. On 1st January, 1957 the Kasaragode taluk was split up into Kasaragode and Hosdurg taluks, Chirakkal taluk into Cannanore and Taliparamba taluks and the Wynad taluk into North Wynad and South Wynad taluks. The Malabar district was trifurcated into Cannanore, Kozhikode and Palghat districts on 1st January, 1957. The Cannanore district was formed with Cannanore, Hosdurg, Kasaragod, Kottayam, North Wynad, South Wynad and Taliparamba taluks of which the Kottayam taluk was subsequently renamed as Tellicherry and South Wynad taluk was transferred to the Kozhikode district.

Cannanore district lies in a southerly direction between North latitudes $11^{\circ} 40'$ and $12^{\circ} 48'$ and East longitudes $74^{\circ} 52'$ and $76^{\circ} 07'$ bounded on the north by the districts of South Kanara and Coorg, on the east by the Mysore district, on the south by the Kozhikode district and on the west by the Arabian sea.

There are altogether 250 revenue villages in the six taluks of the district. There are two municipal towns and 197 panchayats, 12 Development Blocks are functioning.

With an area of 5675.5 Sq. Km. (2191.32 Sq. miles) the district ranks the third in the State in respect of area. The district is divided into three natural divisions, Highland (2992.5 Sq. Km.), Midland (2350.4 Sq. Km.) and lowland (332.6 Sq. Km.)

Out of the 44 rivers in Kerala as many as 20 are in this district. Valapattanam river, the longest in the district has a length of 112.65 Km. (70 miles) of which 45.06 Km. (28 miles) are navigable allowing motor boat traffic upto 12.87 Km. (8 miles) from the mouth of the sea. The river has a total drainage area of 1191.4 Sq. Km. (460 Sq. miles) of which 528.36 Sq. Km. (204 Sq. miles) lies in Mysore State.

The river Chandragiri comes next in importance and its navigable distance comes to 12.87 Km. (8 miles). The other three important rivers are Kuppam river, Anjarakandy river and Karingote river.

Kumbla, Kulnad, Bekal, Chittari and Kavvayi form the important backwaters of the district. These are connected with other backwaters of the State by canals, either natural or man-made.

The important mountains of the district are Banasura or Balasur Peak (6762 feet), Brahmgiiri (5276 feet), Veidalmala (4500 feet) and Mount Deli or Elimala (855 feet).

The soils of the district can be classified into sandy, laterite and hilly or forest soils. The sandy soils occur as a narrow belt along the coast on the western portions of Cannanore, Hosdurg, Taliparamba and Tellicherry taluks and also in a narrow strip on the south western side of Kasaragode taluk. The soil in the midland region of the district is laterite and in the eastern part hilly or forest soil. The laterite soil found in this district are more fertile than pure fertile soil. All garden land crops like coconut, arecanut and fruit palms etc. are grown in this soil. The hilly and forest soil is characterised by a surface layer of organic matter derived from forest growth. This soil is rich in nitrogen but extremely poor in bases due to heavy leaching. The soil is particularly suited for plantation crops such as Tea, Cardamom and Rubber.

Three kinds of economic minerals lime shell, clays and buildingstone are seen in this district. Lime shell is exploited for lime making and is found largely in Nileshtar village of Hosdurg taluk and Cheruvathur and Puthur villages of Kasaragode taluk. China clay occurs in a number of villages like Kanhangad, Ajanur

Madikai, Pudukai, Nileshwar, Kodakat and Cheruvathur of Hosdurg taluk, Karivellur, Thrichambaram and Malapattom of Taliparamba taluk and Cheruthazhom, Madai, Ezhome and Kannapuram of Cannanore Taluk. At Nileshwar, Kannapuram and Palayangadi china clay is actively exploited.

Like other parts of Kerala, this district has four seasons, the dry weather from December to February, the hot weather from March to May, South-west Monsoon from June to September and the retreating or north-east monsoon from October to November. Free from the hot weather and extreme cold, the district has more or less a uniform temperature. The percentage humidity is highest during south-west monsoon and lowest in the months of December, January and February.

The forest of this district can be classified into plain deciduous, Plateau deciduous, tropical ever-green and semi ever-green. Of these, plain deciduous is confined to the foot of the hills to the west of the western ghats. The plateau deciduous is found on the Wynad plateau. This region is characterised by the presence of teak and *Terminalia tomentosa*. The tropical ever-green forests are found at elevations above 1000 ft. and semi-evergreen in areas between the evergreen and deciduous forests, both in the plains and plateau. The Wynad forest division which is the only forest

division contains teak, softwood, cashew and other miscellaneous trees.

The population of the district according to 1961 census was 17.80 lakhs which is only 10.53% of the State population of 169.04 lakhs. The population of the district in 1966 was estimated to be 20.24 lakhs as against the estimated population of the State 191.37 lakhs.

According to 1961 census the Hindus constitute 69.50% of the population. The Muslim rank second (23.53%) and the Christians third (6.94%). Out of the total population of the district 2.44 % are scheduled caste and 3.98% are scheduled tribes. Kasaragode taluk has got the highest number of scheduled caste (0.75%) and North Wynad Taluk has the highest number of scheduled tribes (1.20%) according to 1961 census.

Out of the total population of 17.80 lakhs, 83.14 per cent are in the rural area. The number of persons per Sq. Km. of Cannanore district has more than doubled in 1961, when compared to 1921, the figures being 152 in 1921 and 313 in 1961. The most spectacular increase in population density during 1921-61 is that of North Wynad taluk which has gone up from 40 to 121.

Occupied residential houses of Cannanore district have recorded an increase of 83.59% during 1921-61 against the Kerala State increase of

93.10%. The increase during the present decade (1951-61) is more than three times the growth rate recorded in the previous decade.

As per 1961 census the total livestock population of the district was 5,18,245 of which cattle population was 3,83,033 (ie. 73.91%). By the end of 1966 the total livestock population increased to 5,52,217 of which cattle population was 4,00,036.

As in other districts of Kerala, majority of the population depend on agriculture. Paddy, tapioca, jack, cocoanut, arecanut, cashew, pepper, coffee, tea, cardamom, lemongrass and tobacco are mainly cultivated in the District. Cultivation of tobacco in the State is confined to Kasaragode and Hosdurg taluks of the District.

Out of the total cropped area of 322492 hectares in Cannanore District during 1965-66 29.22% were under paddy, 2.33% under tapioca, 22.86% under cocoanut, 3.75% under arecanut, 9.81% under cashew and 13.57% under pepper. The total production of Rice during the year was 107594 tonnes, tapioca 66127 tonnes, coconut 282 million nuts, arecanut 1511 million nuts, cashew-nut 35502 tonnes and pepper 6447 tonnes.

The sex ratio was (Number of females per 1000 males) for Cannanore district was 1050 in

1901. The sex ratio in 1961 was 1035 for every 1000 males while the same was 1057 in 1951.

According to 1961 census the percentage of literacy of the district is comparatively low. While 46.85% of the population of the State were literate, the corresponding figure for this district was about 41.29% in 1961. But by the end of 1965-66 the same is estimated as 49.7% as against the State average of 55.2%. There were 1633 educational institutions for school education, out of which 92 were High Schools, 433 Upper Primary Schools 1101 Lower Primary Schools and 7 Training Schools (1966). During 1965-66 there were 7 Arts and Science Colleges (including Oriental title institutions) and one Training college in this district. Taking all the colleges together the total number of college going students in 1965-66 was 5897 of which 4254 were boys and 1643 girls.

The number of Allopathic institutions as on 1st April 1961 was 6 Hospitals, 17 dispensaries, 9 Primary Health Centres. In 1965-66 the number of Allopathic Institutions has gone up to 7 Hospitals 29 dispensaries and 12 Primary Health Units. Total bed strength in 1965-66 was 1215.

Besides this there were 3 Ayurvedic Hospitals and 17 Ayurvedic dispensaries with a total bed strength of 30 during 1965-66 in this district.

There is no Hydro electric Project in the district. The supply of Electricity is solely from Uppatti Generating Station of Pykara Electricity system arranged as per the agreement with the Madras Government. There were two receiving sub-stations at Mananthody and Cannanore. The number of consumers of Electricity is 33477 in 1966.

The important industries in the District are Oil Mills, Beedi and Cigar, Cotton textiles, Saw Mills, Plywood and other timber industries. The total number of registered working factories in the District during 1965 was 358 and the average number of persons employed in the registered factories during 1965 in the District was 14033.

The condition of Roads in this district has improved much in recent years. In 1961 there were 2133 Kilometres of road in the District. By the end of 1965-66 the total length of Road increased to 2910 Km.

The railway line with a length of 137 Km. (Broad gauge) passes through all the taluks of the district except North Wynad and runs parallel to the seashore, the maximum distance from the sea being hardly 3.22 Km. (2 miles).

Besides the navigation facilities through the rivers, there is a canal system in this district which

runs from Hosdurg to Nileshwar, from Nileshwar to Payyannur, from Payyannur to Palayangadi and from Palayangadi to Athirangom covering a total distance of 54.72 Km. (34 miles). From Athirangom to Badagara there is no canal system. The west coast canal which starts from Trivandrum ends at Badagara. But for the break between Athirangam and Badagara the west coast canal would have been continuous upto Housdurg.

There are four minor ports in the district. They are Tellicherry, Cannanore, Azhikkal and Kasaragode. Tellicherry was East India Company's first regular settlement on the Malabar coast. The site was fixed as the most favourable from which the Company could command pepper from Tellicherry (formerly Kottayam) and old Kolathiri Rajas dominions. Cannanore Port offers facilities for shipping and discharge of cargo; there is no bar and good shelter exists for sailing vessels. The Azhikkal Port is situated at the mouth of the Baliapattom river. It is a tidal port with bar and channel, the bar maintaining a depth of $5\frac{1}{2}$ to 6 ft. at low tide. The port is declared open for foreign traffic but at present the traffic is confined only to coastal trade in sailing vessels as steamers have not begun to call at the port. Kasaragode port is situated on the eastern bank of the backwater formed by the Chandragiri river which is separated from the sea by a sand spit about 1.602 Km.

(1 mile) in length and about one furlong (201 metre) in breadth. It is also a tidal one and is closed for shipping during the south-west monsoon period. The steamers do not call at the port at that time. The traffic is only in sailing vessels. Schooners and other big sailing vessels anchor outside the bar.

Most of the villages have Post Offices in this District. In 1965-66 there were 427 Post Offices in this district while the total number of Post Offices was only 357 as on 31st March 1961.

There are 63 Telegraph Offices during 1965-66. Besides the above, there are 11 Telephone Exchanges with 61 Trunk-call and 61 Local Call Offices, covering a total number of 1491 Telephone connections during the year 1965-66.

Some of the important places in Cannanore district are Cannanore, Baliapattom, Tellicherry, Kottiyoor, Payyannur and Ezhimala.

Cannanore:

Cannanore, the headquarters of the Cannanore taluk became also the headquarters of the Cannanore district on 1st January 1957 when the new district was formed. Cannanore was the capital of North Kolathiri Rajas for many centuries and it was a great emporium of trade between Arabia, the Persian Gulf and southern India. Vasco Da-Gama passed through Cannanore in 1498 when it

was "a large town of thatched houses inside a bay." On 23rd October 1505 Don Francisco-de Almejde, the first Portuguese Viceroy of all the Indies commenced with Kolathiri's permission, the construction of the Cannanore Fort which he called St. Angelo. During the middle of the 17th century the Fort was captured by the Dutch. The East India Company took over all institutions from the Dutch in 1790. The port, customs office and the shipping office are situated near the beautiful sea-coast. Adjacent to the sea shore is the Cannanore cantonment. The large military barracks, Government headquarters hospital and Fort St. Angelo which has withstood the fury of south-west monsoon for the past 400 years are all situated in the cantonment area. Camp bazaar is the most important business centre. Almost all the Government Offices are situated in the eastern part of Cannanore town. The Central Jail of Cannanore is one of the oldest jails in South India. The Payyambalam beach which is about two miles in length is known for beauty and scenery.

Baliapattom:

Baliapattom, known also as Valapattanam or Azhikkal is located on the west coast road 9.66 Km. (6 miles) north of Cannanore and on the south bank of the Valapattanam river. A place of importance at the time of Cheraman Perumal, it was also one of the chosen seats of Kolathiri

Rajas whose dominions stretched in the south as far as the Kotta river (or Kuttiyadi river) and in the north as far as the Kasaragode taluk including a portion of it. Apart from its historical importance it has the second largest Plywood factory in Asia. A hard-board factory with modern equipments has been recently started here.

Tellicherry:

Historically Tellicherry is an important place. "Let us be sole masters of the pepper trade" was the motto of the East India Company and they established their first regular settlement on the Malabar coast at Tellicherry in 1683. The Tellicherry Fort was built on 20th August 1708 on a small hill called Thiruvallapadkunnu. The earliest Protestant Mission at work in Malabar was the Basel German Evangelical Missionary Society. The famous Malayalam scholar Dr. Gundert established a church on Nittur hill at Tellicherry in 1839. The Anglican church was built beneath the walls of the Fort by the funds left by the Master Attendant Mr. Edward Brennen. A high school was also started by the funds set apart by Mr. Brennen to impart sound English education to "Persons of all creeds and denominations." Government took over this school from the Basel Mission in 1872 and it was converted as a Second Grade College in 1890 and now it is one of the Senior Colleges of the State.

Kottiyur:

Kottiyur situated in Manathana village is about 64.37 Km. (40 miles) from Tellicherry. Manathana was an important centre of Military activity during the Pazhassi struggle againsts British supremacy in Malabar. An ancient Fort still exists here. At Kottiyur there is a famous temple of great celebrity called Tricharumana dedicated to Siva attracting lakhs of devotees during the festival month of Edavom (May-June). This temple is popular to the Hindus of North Kerala as Sabarimala to the Hindus of other parts of the State.

Payyannur:

Payyannur the ancient seat of seventeen Namboothiri Illams known as "Payyannur Gramakkars" whom Parasu Rama is said to have specially favoured, is an important place 22.53 Km. (14 miles) north of Taliparamba. This was one among the sixtyfour Gramas said to have been founded by Parasu Rama.

Ezhimala:

Ezhimala of Kunnuru village in Taliparamba taluk a conspicuous landmark to mariners is situated on the shores of the Arabian Sea. Gasper Correa says that Vasco Da Gama's pilot had foretold that the first land to be seen would be a "Great mountain" which is on the coast of India in the Kingdom of Cannanore. The west coast Railway line passes through the Kunnuru village. Ezhimala is famous for its Ayurvedic herbs.

CANNANORE DISTRICT AT A GLANCE

Sl. No.	Item	Reference period
1	2	3
<i>O. General</i>		
0.1	Area	1966
0.2	Length of Coast line	"
0.3	Number of rivers	"
0.4	Number of taluks	"
0.5	Number of Revenue villages	"
0.6	Number of Panchayats	"
0.7	Number of Municipalities	"
0.8	Number of Blocks	"
0.9	Location—North latitude	"
0.10	Do. East longitude	"
<i>I. Population</i>		
1.1	Total population	1961
1.2	Males	"
1.3	Females	"
1.4	Rural population	"

AND COMPARISON WITH KERALA

Unit	Cannannore District	Kerala State	Comparison of
			Cannannore District with Kerala %
4	5	6	7
Sq. Km	5675.50	38855	14.61
Km	...	580	24.41
No.	20	44	...
"	6	55	...
"	250	1635	...
"	197	921	...
"	2	28	...
"	12	144	...
"	11°41' &	8°18' &	...
"	12°48'	12°48'	...
...	74°52' &	74°52' &	...
	76°07'	77°22'	...
Lakhs	17.80	169.04	10.53
"	8.75	83.62	10.46
"	9.05	85.42	10.59
Lakhs	14.80	143.50	10.31

1	2	3
1.5	Percentage of rural population to total population	1961
1.6	Urban population	"
1.7	% of urban population to total population	1961
1.8	Population of scheduled caste	"
1.9	Population of scheduled tribe	"
1.10	Total workers	"
1.11	% of total workers to total population	"
1.12	Non-workers	"
1.13	% of Non-workers to total population	"
1.14	Total male workers	"
1.15	Total Female workers	"
1.16	Density of population	"
1.17	Total literates	"
1.18	Male literates	"
1.19	Female literates	"
1.20	Total Hindus	"
1.21	Total Christians	"
1.22	Total Muslims	"
1.23	Sex ratio	"

	4	5	6	7
%	83.15	84.89	...	
Lakhs	3.00	25.54	11.74	
%	16.85	15.11	...	
Lakhs	0.44	14.35	3.06	
Lakhs	0.71	2.13	33.32	
Lakhs	6.30	56.30	11.19	
%	35.39	33.31	...	
Lakhs	11.50	112.73	10.21	
%	64.61	66.69	...	
Lakhs	4.21	39.47	10.66	
"	2.09	16.83	12.41	
Per Sq. Km	313	435	...	
Lakhs	7.35	79.19	9.28	
"	4.54	45.96	9.87	
"	2.81	33.23	8.45	
"	12.37	102.83	12.02	
"	1.24	35.87	3.45	
"	4.19	30.28	13.84	
Females per 1000 males	1035	1022	...	

1	2	3
1.24	Sex ratio of Hindus	1961
1.25	Sex ratio of Muslims	"
1.26	Sex ratio of Christians	"
1.27	Never married persons	"
1.28	Married persons	1961
1.29	Widowed	"
1.30	Divorced or separated persons	"
1.31	% of never married to total population	"
1.32	% of married to total population	"
1.33	% of widowed to total population	"
1.34	% of divorced or separated to total population	"
1.35	Growth of population 51-61	51-61
1.36	Growth of population 1901-61	1901-61
1.37	Estimated population	1966

II. Agriculture

2.1	Area according to village papers 30-6-66	"
2.2	Area under forests	"
2.3	Total cropped area	"

	4	5	6	7
Females per 1000 males	1036	1028
"	1070	1032
"	925	995
Lakhs	9.77	95.79	10.19	...
Lakhs	6.40	60.58	10.56	...
"	1.17	10.00	11.70	...
"	0.46	20.61	17.62	...
%	54.86	56.67
%	35.93	35.84
%	6.55	5.92
%	2.59	1.54
%	29.47	+24.76
%	126.11	+164.27
Lakhs	20.51	191.37	10.72	...
In lakhs of Hectare	5.77	38.58	14.95	...
"	0.66	10.55	6.25	...
"	3.22	25.51	12.62	...

1	2	3
2.4	Area under rice (Autumn)	30-6-66
2.5	Area under rice (winter)	"
2.6	Area under rice (summer)	"
2.7	Area under tapioca	"
2.8	Area under cocoanut	"
2.9	Area under tea	"
2.10	Area under Coffee	"
2.11	Area under rubber	"
2.12	Area under Arecanut	"
2.13	Production of rice (Autumn)	30-6-66
2.14	Production of rice (Winter)	"
2.15	Do (Summer)	"
2.16	Production of tapioca	"
2.17	Production of cocoanut	"
2.18	Production of tea	"
2.19	Production of coffee	"
2.20	Production of rubber	"
2.21	Production of arecanut	"
2.22	Tractors (Government & Private)	1966
2.23	Oil engines with pump for irrigation	"
2.24	Carts	"
2.25	Seed drills	"

	4	5	6	7
Hectares	66421		398012	16.69
„	26639		327879	8.12
„	1184		76438	1.55
„	7523		229684	3.27
„	73716		586313	12.57
„	1512		39470	3.80
„	2645		23602	11.21
„	12834		149634	8.58
„	12087		64478	18.74
M. T.	81495		521850	15.62
„	25077		389845	6.43
„	1022		85794	1.19
„	66127		3095658	2.14
Million nuts	282		3293	8.56
M. T.	1091		39154	2.78
„	1088		9878	11.01
„	1814		46953	3.86
Million nuts	1511		9681	15.60
No.	26		418	6.22
„	1870		6824	27.40
„	445		16309	2.73
„	45		567	7.94

1	2	3
2.26	Ploughs (Wooden)	1966
2.27	Floughs (Iron)	"
2.28	Electric Pumps for irrigation	"
2.29	Sprayers and dusters	"
<i>III. Veterinary</i>		
3.1	No. of veterinary hospitals	1965-66
3.2	No. of veterinary dispensaries	"
3.3	Total livestock	1966 census
3.4	Total poultry	"
<i>IV. Industries, Labour and Employment</i>		
4.1	No. of registered working factories	1965
4.2	Employment in registered working factories	"
4.3	No. of cultivators	1961
4.4	No. of labourers	"
4.5	No. engaged in mining, fishing & quarrying	"
4.6	No. engaged in household industry	"
4.7	No. engaged in manufacture	"
4.8	No. engaged in construction	"
4.9	No. engaged in Trade and commerce	"
4.10	No. engaged in Transport	"

	4	5	6	7
No.	55275		475930	11.61
„	914		17179	5.32
„	76		4869	1.56
„	1472		20586	7.15
Nos.	2		60	...
„	19		186	...
Lakhs	5.52		46.41	11.89
„	8.26		99.08	8.33
Nos.	358		2820	12.69
„	14033		195456	7.18
Lakhs	1.53		11.78	12.78
„	1.10		9.78	11.25
„	0.40		4.87	8.21
„	0.41		4.89	8.38
„	0.65		5.29	12.29
„	0.07		0.71	9.86
„	0.38		3.22	11.80
„	0.12		1.53	7.84

1	2	3
4.11	No. engaged in other services	19
	<i>V. Electricity</i>	
5.1	No. of consumers of electricity	1965-66
	<i>VI. Joint Stock Companies</i>	
6.1	Number of companies	..
6.2	Paid up capital of public companies	..
6.3	Paid up capital of private companies	..
	<i>VII. Medical and Public Health</i>	
7.1	No. of Allopathic hospitals	..
7.2	No. of allopathic dispensaries and other Institutions	..
7.3	No. of Ayurvedic Hospitals	..
7.4	No. of Ayurvedic dispensaries	..
7.5	Beds available in allopathic hospitals	..
7.6	Beds available in Ayurvedic hospitals	..
	<i>VIII. Transport and Communication</i>	
8.1	No. of motor vehicles	65-66
8.2	Railway length	..
8.3	Route distance (Nationalised)	..
8.4	Passangers carried (State Transport)	..

	4	5	6	7
Lakhs	1.64	14.23	11.52	
Nos	33477	324111	10.32	
„	76	1010	7.52	
Rs. in lakhs	43.40	3352.67	1.29	
„	61.32	963.06	6.37	
No.	7	101	6.93	
„	41	390	10.51	
„	3	45	6.66	
„	17	219	7.76	
„	1215	18526	6.55	
„	30	891	3.38	
Nos.	3210	44390	7.23	
Km.	137	888	15.42	
„	...	19878	...	
Lakhs	...	1585.29	...	

1	2	3
8.5	Length of Roads (P. W. D.)	63-64
8.8	Railway per lakh of population	1966
8.7	Railway per 100 sq km.	"
<i>IX. Police and Crimes</i>		
9.	No. of murders	1965
9.2	No. of house breaking	"
9.3	No. of cattle thefts	"
9.4	No. of cognizable offences	"
9.5	No. of Police Stations	1963
<i>X. Registration</i>		
10.1	No. of sub-registry offices	65-66
10.2	No. of documents registered	"
10.3	Value of documents registered	"
10.4	Mortgages registered	"
10.5	Sale deeds registered	"
10.6	Wills registered	"
10.7	Money Bond registered	"
<i>XI. Education:</i>		
11.1	No. of literates and educated persons	1961
11.2	No. of High schools	65-66
11.3	No. of Training Schools	"

	4	5	6	7
Km.	1376	13634	10.09	
"	6.70	4.64	...	
"	2.41	2.29	...	
No.	33	267	12.35	
"	259	2259	11.48	
"	9	125	7.20	
"	1505	15383	9.8	
"	29	216	13.43	
"	23	207	11.11	
"	62188	747872	8.32	
Rs.in lakhs	644.18	8501.36	7.58	
No.	4976	188437	2.64	
"	11039	209494	5.26	
"	704	5564	12.65	
"	852	15303	5.56	
in lakhs	7.35	79.19	9.28	
No.	92	1151	7.99	
"	7	105	6.66	

1	2	3
11.4	No. of Upper Primary schools	65-66
11.5	No. of L. P. Schools	"
11.6	No. of Boys in Std. I to X	"
11.7	No. of girls in Std. 1 to X	"
11.8	No. of pupils studying T.T.C	"
11.9	No. of Pupils studying in Kannada	"
11.10	No. of pupils studying in Sanskrit	"
11.11	No. of pupils studying in Arabic	"
11.12	No. of pupils benefitted by (CARE) feeding	"
11.13	No. of teachers	"
11.14	No. of colleges for General Education including Oriental studies	"
11.15	No. of University teaching Depts.	"
11.16	No. of colleges for Professional Education	"
11.17	No. of Scholars in colleges for General Education including Oriental studies	"
11.18	No. of scholars in University teaching Departments	"
11.19	No. of scholars in Colleges for Professional education	"
11.20	Male literacy rate	1961
11.21	Female literacy rate	1961

4	5	6	7
No.	433	2447	17.69
No.	1101	6954	15.83
Lakhs	2.34	22.58	10.36
„	1.79	19.10	9.37
No.	1240	13852	8.95
„	30451	30451	100%
„	1050	35178	2.98
„	22367	250403	8.93
„	224729	1817761	12.36
„	14477	125719	11.51
„	7	106	6.60
„	...	26	...
„	1	37	2.7
„	5778	103215	5.59
„	...	734	...
„	119	12820	0.92
%	52.0	55.0	...
%	31.0	38.9	...

Year	Value	Value	Value
1971	1110	1110	1110
1972	1200	1200	1200
1973	1300	1300	1300
1974	1400	1400	1400
1975	1500	1500	1500
1976	1600	1600	1600
1977	1700	1700	1700
1978	1800	1800	1800
1979	1900	1900	1900
1980	2000	2000	2000
1981	2100	2100	2100
1982	2200	2200	2200
1983	2300	2300	2300
1984	2400	2400	2400
1985	2500	2500	2500
1986	2600	2600	2600
1987	2700	2700	2700
1988	2800	2800	2800
1989	2900	2900	2900
1990	3000	3000	3000
1991	3100	3100	3100
1992	3200	3200	3200
1993	3300	3300	3300
1994	3400	3400	3400
1995	3500	3500	3500
1996	3600	3600	3600
1997	3700	3700	3700
1998	3800	3800	3800
1999	3900	3900	3900
2000	4000	4000	4000

I. AREA AND POPULATION

This Section deals with the area and population of Cannanore District, their distribution and characteristics according to the 1961 census. The fundamental factors such as sex distribution, density, religion, mother-tongue, rural-urban population etc. have been dealt with in detail.

I. AREA AND

Table

POPULATION BY

District/Taluk	Area in Sq. Km	Persons
1	2	3
Cannanore District	5675.48	1780294
Cannanore Taluk	426.54	391636
Hosdurg Taluk	990.28	241131
Kasaragod Taluk	974.71	271015
North Wynad Taluk	746.67	90200
Taliparamba Taluk	1332.42	310723
Tellicherry Taluk	1204.86	475589

Source : Superintendent of

POPULATION

1.1 (a)

TALUKS (1961 CENSUS)

Population			Percentage	
Males	Females	Persons	Males	Females
4	5	6	7	8
874667	905627	100.00	100.00	100.00
192205	199431	22.00	21.98	22.02
118278	122853	13.54	13.52	13.56
134468	136547	15.22	15.37	15.08
46729	43471	5.07	5.34	4.80
153704	157019	17.45	17.57	17.34
229283	246306	26.72	26.22	27.20

Census Operations, Kerala.

RURAL AREA

Table

RURAL AND URBAN POPULATION

District/Taluk	Rural	
	Population	Percentage of population to total rural population of the District
1	2	3
Cannanore District	1480177	100.00
Cannanore Taluk	238100	16.09
Hosdurg Taluk	196554	13.28
Kasaragode Taluk	226668	15.31
North Wynad Taluk	90200	6.09
Taliparamba Taluk	297829	20.12
Tellicherry Taluk	430826	29.11

Source: Superintendent of

AND POPULATION

1.1 (b)

BY TALUKS (1961 Census)

Urban			
Percentage of rural population to total rural population of the State	Population	Percentage of urban population to total urban population of the District	Percentage of urban population to total urban population of the State
4	5	6	7
10.32	300117	100.00	11.75
1.66	153536	51.16	6.01
1.37	44577	14.85	1.75
1.58	44347	14.78	1.74
0.63
2.08	12894	4.30	0.50
3.00	44763	14.91	1.75

Census Operations, Kerala.

I. AREA

Table

POPULATION BY

District/Taluk	High Land	
	Actual	Percentage
1	2	3
Cannanore District	373734	100.00
Cannanore Taluk
Hosdurg Taluk	52473	14.04
Kasaragod Taluk	88270	23.62
North Wynad Taluk	90200	24.13
Taliparamba Taluk	80483	21.54
Tellicherry Taluk	62308	16.67

Source: Superintendent of

AND POPULATION

1.2

NATURAL REGIONS (1961 Census)

Mid Land		Low Land	
Actual	Percentage	Actual	Percentage
4	5	6	7
1088334	100.00	318226	100.00
208320	19.14	183316	57.60
59656	5.48	129002	40.54
182745	16.79
...
224332	20.61	5908	1.86
413281	37.98

Census Operations, Kerala.

I. AREA AND POPULATION

Table 1.3
GROWTH OF POPULATION BY RURAL URBAN CLASSIFICATION IN CANNANORE
DISTRICT (1961 CENSUS)

Census Year	Rural		Urban	
	Number	Percentage decade variation	Number	Percentage decade variation
1	2	3	4	5
1901	731658	...	55694	...
1911	775272	+5.96	66510	+19.42
1921	802852	+3.56	62595	-5.89
1931	923303	+15.00	73754	+17.83
1941	1040519	+12.70	82535	+11.91
1951	1250597	+20.19	124484	+50.83
1961	1480177	+18.36	300117	+141.09

Source: Superintendent of Census Operations, Kerala.

I. AREA AND POPULATION

Table 1.4

TALUK-WISE GROWTH RATE OF POPULATION IN CANNANORE DISTRICT (1661 Census)

Sl. No.	Taluk	Decennial growth rate 1951-61	Percentage increase since 1921
1	2	3	4
1	Cannanore Taluk	20.94	86.75
2	Hosdurg Taluk	28.94	106.27
3	Kasaragod Taluk	20.98	93.54
4	North Wynad Taluk	51.39	202.32
5	Taliparamba Taluk	47.22	127.33
6	Tellicherry Taluk	28.68	104.74

Source: Superintendent of Census Operations, Kerala

I. AREA AND POPULATION

Table 1.5

RATE OF POPULATION GROWTH OF CANNANORE DISTRICT WITH ADJACENT DISTRICTS (1961 Census)

Districts	Rate of Growth			Average annual growth rate
	1960-61	1951-61		
1	2	3	4	
Cannanore	126.11	29.47		2.1
Coorg	78.75	40.72		1.3
Kozhikode	127.19	26.72		2.1
South Kanara	74.07	17.50		1.2

Source: Superintendent of Census Operations, Kerala.



I. AREA AND

Table

DENSITY BY NATURAL REGION (PER SQ.

District/Taluks	High Land*		
	Total	Rural	Urban
1	2	3	4
Cannanore District	125	125	...
Cannanore Taluk
Hosdurg Taluk	99	99	...
Kasaragod Taluk	177	177	...
North Wynad Taluk	121	121	...
Taliparamba Taluk	127	127	...
Tellicherry Taluk	107	107	...

*No urban area

Source: Superintendent of

POPULATION

1.6 (a)

KILOMETRES) - 1961 CENSUS

Mid-Land			Low Land		
Total	Rural	Urban	Total	Rural	Urban
5	6	7	8	9	10
463	419	1872	957	729	1349
715	638	1961	1356	880	1891
214	214	...	715	693	761
384	317	1123
...
329	314	1611	346	346	...
663	598	5742

Census Operations, Kerala.

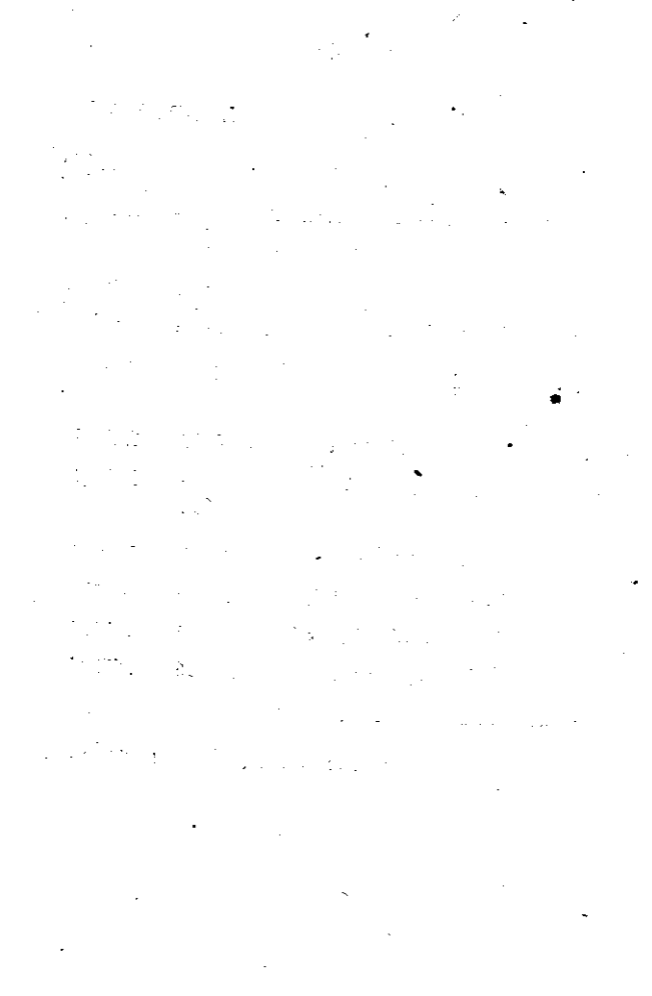
I. AREA AND POPULATION

Table 1.6 (b)

DENSITY BY TALUKS (PER SQ. K. M.) (1161 CENSUS)

District/Taluk	1921	1931	1941	1951	1961
1	2	3	4	5	6
Cannanore District	152	175	198	242	313
Cannanore Taluk	491	566	632	759	18
Hosdurg Taluk	118	139	• 157	189	244
Kasaragod Taluk	144	168	191	230	278
North Wynnad Taluk	40	43	50	80	121
Taliparamba Taluk	103	118	132	158	233
Tellicherry Taluk	193	218	247	306	394

Source: Superintendent of Census Operations, Kerala.



I. AREA AND

Table

RURAL URBAN POPULATION BY TALUKS AND

District/Taluk	Rural population	
	Persons	Male
1	2	3
Cannanore District	1480177	725325
Cannanore Taluk	238100	114948
Hosdurg Taluk	196554	96391
Kasaragod Taluk	226668	112639
North Wynad Taluk	90200	46729
Thaliparamba Taluk	297829	147234
Tellicherry Taluk	430826	207384

Source: Superintendent of Census

POPULATION

1.7

BY SEX IN CANNANORE DISTRICT (1961)

Urban population			
Female	Persons	Male	Female
4	5	6	7
754852	300117	149342	150775
123152	153536	77257	76279
100163	44577	21887	22690
114029	44347	21829	22518
43471
150595	12894	6470	6424
223442	44763	21899	22864

Operations, Kerala.

I. AREA AND POPULATION

Table 1.8
SEX RATIO OF CANNANORE DISTRICT BY RURAL URBAN CLASSIFICATION

Taluks	1951		1961			
	Total	Rural	Urban	Total	Rural	Urban
1	2	3	4	5	6	7
Cannanore Taluk	1071	1074	1051	1038	1071	987
Hosdurg Taluk	1058	1061	1033	1039	1039	1037
Kasaragod Taluk	1035	1034	1048	1015	1012	1032
North Wynad Taluk	897	897	...	930	930	...
Taliparamba Taluk	1067	1067	...	1022	1023	993
Tellicherry Taluk	1080	1081	1068	1074	1077	1044

Source: Superintendent of Census Operations, Kerala.

I. AREA AND POPULATION

Table 1.9

SEX RATIO OF CANNANORE DISTRICT AND KERALA-1901-1961

Year	Sex Ratio					
	Cannanore District			Kerala State		
	Total	Rural	Urban	Total	Rural	Urban
1901	1050	1051	1035	1004	1008	953
1911	1061	1063	1036	1008	1012	957
1921	1086	1086	1086	1011	1016	957
1931	1074	1075	1063	1022	1028	963
1941	1078	1084	1011	1027	1032	978
1951	1057	1057	1053	1028	1033	991
1961	1035	1041	1010	1022	1027	991

Source: Superintendent of Census Operations, Kerala.

I. AREA

Table

SEX RATIO BY INDUSTRIAL

District/Taluk	Total workers		
		As cultivator	As agricultural labourer
1	2	3	4
Cannanore District	497	662	1328
Cannanore Taluk	405	956	2024
Hosdurg Taluk	615	670	1457
Kasaragod Taluk	431	518	1041
North Wynad Taluk	470	453	816
Taliparamba Taluk	634	759	1'09
Tellicherry Taluk	463	644	1084

Source. Superintendent of

AND POPULATION

1.10

CLASSIFICATION (1961)

Workers							
In Mining, Quarrying, Livestock, Forestry, Fishing, Hunting & Plantations, orchards & allied activities	At household Industry	In Manufacturing other than household industry	In Construction	In trade and commerce	In Transport, storage and communication	In other service	Non-workers
5	6	7	8	9	10	11	12
171	750	126	43	85	106	442	1535
27	956	112	57	21	99	344	1634
82	1080	86	81	413	103	519	1447
168	579	307	7	202	4	341	1599
531	368	76	62	5	5	295	1465
121	663	72	48	35	109	437	1385
183	516	144	16	17	168	546	1570

Census Operations, Kerala.

1. AREA AND POPULATION

Table 1.11 (a)

SEX RATIO OF CANNANORE DISTRICT BY RELIGION (1961)

Religion	Sex Ratio		
	1	2	3
	Cannanore District	Kerala State	
Christians	925	995	
Hindus	1036	1028	
Muslims	1070	1032	

Source: Superintendent of Census Operations, Kerala.

I. AREA AND POPULATION
Table 1.11 (b)

SEX RATIO OF CANNANORE DISTRICT
BY AGE GROUPS (1961)

Age/age groups	Sex Ratio
Under 1 year	1005
1	977
2	974
3	974
4	969
5	945
6	915
7	995
8	925
9	1005
10 to 14	981
15 to 19	1059
20 to 24	1154
25 to 29	1189
30 to 34	1097
35 to 39	1028
40 to 44	1039
45 to 49	1014
50 to 54	1084
55 to 59	1021
60 to 64	1071
65 to 69	1014
70 and above	1079

Source: Superintendent of Census Operations, Kerala.

I. AREA AND

Table

PERCENTAGE AGE DISTRIBUTION OF POPULATION

Age Group	Persons	Total
		Males
1	2	3
All Ages	1780294	874667
0 — 4	263311	132986
5 — 9	260536	133314
10 — 14	231255	116737
15 — 19	142530	69232
20 — 24	147996	68704
25 — 29	140839	64339
30 — 34	117575	56055
35 — 39	102454	50511
40 — 44	81876	40162
45 — 49	73314	36407
50 — 54	62145	29817
55 — 59	44449	21991
60 — 64	43829	21161
65 — 69	26520	13169
70 +	41313	19976
Age not stated	357	206

Source: Superintendent of Census

POPULATION

I.12 (a)

BY SEX IN CANNANORE DISTRICT (1961)

Percentage distribution			
Females	Persons	Males	Females
4	5	6	7
905627	100.00	100.00	100.00
130325	14.79	15.20	14.39
127222	14.63	15.24	14.05
114518	12.99	13.35	12.65
73298	8.01	7.92	8.09
79269	8.31	7.85	8.75
76495	7.91	7.36	8.45
61520	6.60	6.41	6.79
51943	5.75	5.77	5.74
41714	4.60	4.60	4.61
36907	4.12	4.16	4.08
32328	3.49	3.41	3.57
22458	2.47	2.51	2.48
22668	2.46	2.42	2.50
13351	1.49	1.51	1.47
21437	2.32	2.27	2.37
151	0.02	0.02	0.02

Operations, Kerala.

I. AREA AND POPULATION

Table 1.12 (b)
**PERCENTAGE DISTRIBUTION OF POPULATION OF CANNANORE DISTRICT
 BY BROAD AGE GROUPS (1961)**

Category	Age Group	Percentage
1	2	3
Infants and young children	0 to 4	14.8
Boys and Girls	5 to 14	27.6
Young men and women	15 to 34	33.8
Middle aged men and women	35 to 54	18.0
Elderly persons	55 and above	8.8

Source: Superintendent of Census Operations, Kerala.

I. AREA AND POPULATION

Table 1.13

POPULATION OF CANNANORE DISTRICT BY RELIGION (1961)

Religion	Number				Percentage distribution		
	Total	Rural	Urban	Total	Rural	Urban	
1	2	3	4	5	6	7	
Christians	123575	113638	9937	6.94	7.68	3.41	
Hindus	1237254	1043251	194003	69.50	70.48	64.64	
Jains	551	533	18	0.03	0.04	0.01	
Muslims	418832	322745	96087	23.53	21.80	32.02	
Sikhs	12	10	2	N	N	N	
Zoroastrians	3	...	3	N	
Religion not stated	67	...	67	N	...	0.02	

N = Negligible

Source: Superintendent of Census Operations, Kerala.

I. AREA
Table

POPULATION BY MARITAL

Marital Status	Cannanore	
	Total persons	Males
1	2	3
Never married	976729	547499
Married	639544	304272
Widowed	116534	12044
Divorced and separated	46171	10179
Unspecified status	1316	673
Total	1780294	874667

Source: Superintendent of

AND POPULATION

I.14 (a)

STATUS AND SEX (1961)

District		Kerala State	
Females	Total persons	Males	Females
4	5	6	7
429230	9579030	5218710	4360320
335272	6058305	2942912	3115393
104490	1000419	143041	857376
35992	260723	54566	206157
643	5238	2698	2540
905627	16903715	8361927	8541788

Census Operations, Kerala.

I. AREA AND POPULATION

Table 1.14 (b)

PERCENTAGE DISTRIBUTION OF POPULATION BY MARITAL STATUS AND SEX (1961)

Marital Status	Kerala State						
	Cannanore District				Kerala State		
	Total	Male	Female	Total	Male	Female	Total
1	2	3	4	5	6	7	
Never married	54.86	62.59	47.40	56.67	62.41	51.05	
Married	35.93	34.79	37.02	35.84	35.20	36.47	
Widowed	6.55	1.38	11.54	5.92	1.71	10.04	
Divorced or separated	2.59	1.16	3.97	1.54	0.65	2.41	
Unspecified status	0.07	0.08	0.07	0.03	0.03	0.03	
Total	100.00	100.00	100.00	100.00	100.00	100.00	

Source: Superintendent of Census Operations, Kerala.

I. AREA AND POPULATION

Table 1.15

WORKING POPULATION BY WORK STATUS - 1961, CANNANORE DISTRICT

Sl. No.	Work Status	Total				Percentage			
		3	4	5	6	7	8		
1	Employer	11255	10867	388	3.45	4.21	0.57		
2	Employee	129467	107142	22325	39.73	41.51	32.93		
3	Single worker	175871	132337	43534	53.98	51.29	64.23		
4	Family worker	9247	7711	1536	2.84	2.99	2.27		
	Total	325840	258057	67783	100.00	100.00	100.00		

Source: Superintendent of Census Operations, Kerala.

I. AREA AND

Table

PERSONS NOT AT WORK CLASSIFIED BY SEX AND

Sl. No.	Activity	Persons
1	2	4
1	Full time students	279806
2	Household duties	287891
3	Dependants, infants and disabled	550930
4	Retire, rentier or independent means	11860
5	Beggars, vagrants etc.	4328
6	Inmates of penal, mental and charitable institutions	1027
7	Person seeking employment for the first time	10783
8	Person employed before but now out of employment and seeking work	3950
9	Total non-working population	1150575

Source: Superintendent of

POPULATION

1.16

TYPE OF ACTIVITY - 1961 CANNANORE DISTRICT

Total			Percentage	
Males	Females	Persons	Males	Females
4	5	6	7	8
163749	116057	24.32	32.07	16.66
...	287891	25.02	...	41.33
266510	284420	47.88	58.71	40.83
7257	4603	1.03	1.60	0.66
2317	2011	0.38	0.51	0.29
870	157	0.09	0.19	0.02
9507	1276	0.94	2.10	0.18
3729	221	0.34	0.82	0.03
453939	696636	100.00	100.00	100.00

Census Operations, Kerala.

I. AREA AND POPULATION

Table 1.17.

ESTIMATED POPULATION OF CANNANORE DISTRICT AND KERALA STATE AS ON
1st MARCH (POPULATION IN LAKHS)

Sl. No.	Year	Cannanore District	Kerala State
1	2	3	4
1	1961	17.80	169.04
2	1962	18.34	173.49
3	1963	18.88	177.95
4	1964	19.41	182.42
5	1965	19.96	186.89
6	1966	20.51	191.37

Source: Bureau of Economics & Statistics, Kerala.



I. AREA

Table

POPULATION LAND RATIO IN CANNANORE

Sl. No.	Category
1	2
1	Total area according to village papers
2	Area under Forest
3	Land not available for cultivation
4	Other cultivated land excluding fallow land
5	Fallow land
6	Net area sown
7	Area sown more than once
8	Population land ratio:
	(i) Per capita geographical area
	(ii) Per capita net area sown

Source : Bureau of Economics

AND POPULATION

1-18

DISTRICT AND KERALA STATE - 1960-61

Cannanore District		Kerala State	
In Hectares	In Acres	In Hectares	In Acres
3	4	5	6
576661.36	1424960	3858523.59	9534611
67231.69	166133	1056143.05	2609784
78598.52	194221	355988.51	879666
150748.36	372507	393003.52	971132
41575.42	102735	129666.65	320413
238507.36	589364	1923721.84	4753616
29000.61	71662	425133.57	1050527
0.32	0.80	0.23	0.56
0.13	0.33	0.11	0.28

and Statistics, Trivandrum.

I. AREA AND POPULATION
Table 1.19
TOWNS, VILLAGES AND HOUSEHOLDS IN CANNANORE DISTRICT-1961.

Sl. No.	Taluks/District	No. of Towns				No. of Revenue villages	No. of households*
		Municipal	Non Municipal	4	5		
1	2	3	4	5	6		
1	Cannanore District	2	16	250	57944		
2	Cannanore Taluk	1	9	301	7454		
3	Hosdurg Taluk	...	2	35	6977		
4	Kasaragod Taluk	...	3	79	7746		
5	North Wynnad Taluk	11	3236		
6	Taliparamba Taluk	...	2	46	10255		
7	Tellicherry Taluk	1	...	49	13680		

Source: Superintendent of Census Operations, Kerala.

* Based on 20% sample.



I. AREA AND

Table

REVENUE VILLAGE ACCORDING

Population Range	*No. of		
	Cannanore Taluk	Hosdurg Taluk	Kasaragod Taluk
1	2	3	4
Less than 200
200 - 499
500 - 999	7
1000 - 1999	...	1	23
2000 - 4999	2	15	32
50000 - 9999	17	9	8
10000 & above	8	6	2
Total:	27	31	72

* Excluding the No. of villages

Source: Superintendent of

POPULATION

1.20.

TO POPULATION (1961)

Villages in			
North Wyna Taluk	Taliparamba Taluk	Tellicherry Taluk	Total
5	6	7	8
...
...
...	7
...	24
2	16	5	72
6	24	32	96
3	6	11	36
11	46	48	235

lying wholly in towns.

Census Operations, Kerala.

I. AREA

Table

POPULATION OF SCHEDULED CASTE

Sl. No.	Taluk	Scheduled Castes	
		Male	Female
1	2	4	5
1	Cannanore District	22012	21508
2	Cannanore Taluk	2779	2824
3	Hosdurg Taluk	5908	5732
4	Kasaragod Taluk	6721	6625
5	North Wynad Taluk	507	410
6	Taliparamba Taluk	4829	4745
7	Tellicherry Taluk	1268	1172

Source: Superintendent of

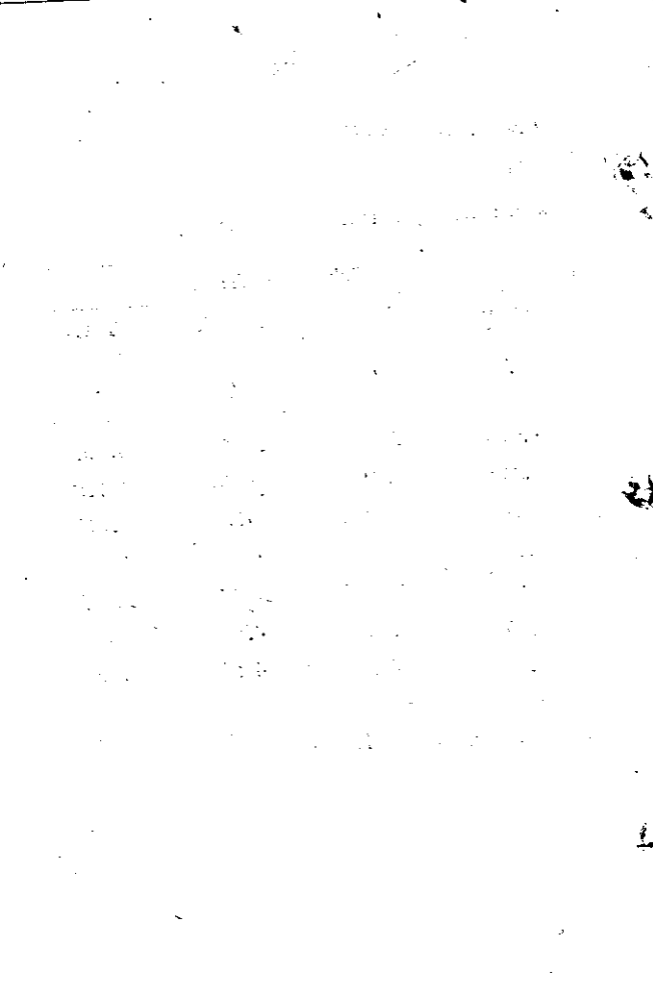
AND POPULATION

1.21

AND SCHEDULED TRIBES (1961 census)

Scheduled Tribes			
Total	Male	Female	Total
5	6	7	8
43520	34543	36362	70905
5603	5414	6354	11768
11640	2852	3190	6042
13346	7174	6948	14122
917	10432	10914	21346
9574	3832	4301	8133
2440	4839	4655	9494

Census Operations, Kerala.



II. HOUSING

This section gives an idea of the number of occupied houses, number of persons per occupied house, growth of housing, distribution of households according to material of roof, wall, number of rooms, tenure etc. as available from the 1961 census.

II.

Table

VARIATION OF OCCUPIED HOUSES

Census Year	Total	
	Number	Percentage decade variation
1	2	3
1921	151724	...
1931	171801	13.23
1941	192959	12.32
1951	212148	9.94
1961	278556	31.30

Source: Superintendent of

HOUSING

2.1

IN CANNANORE DISTRICT

Rural		Urban	
Number	Percentage decade variation	Number	Percentage decade variation
4	5	6	7
142931	...	8793	...
162141	13.44	9660	9.86
181449	11.91	11510	19.15
195318	7.64	16830	46.22
237691	21.69	40865	142.81

Census Operations, Kerala.

II. HOUSING

Table 2.2

PERSONS PER 1000 OCCUPIED HOUSES IN CANNANORE DISTRICT
FROM 1921 TO 1961

Census Year	Persons per 1000 occupied houses			
	Total	Rural	Urban	
1	2	3	4	
1921	5704	5617	7119	
1931	5804	5694	7635	
1941	5820	5734	7171	
1951	6482	6403	7397	
1961	6391	6227	7344	

Source: Superintendent of Census Operations, Kerala.

II. HOUSING

Table 2.3

PERSONS PER OCCUPIED CENSUS HOUSE BY TALUKS - 1961

Taluk/District/State	Persons per occupied houses		
	Total	Rural	Urban
1	2	3	4
Cannanore Taluk	7.09	6.84	7.53
Hosdurg Taluk	5.79	5.74	6.02
Kasaragod Taluk	6.13	6.11	6.22
North Wynnad Taluk	5.73	5.73	...
Thaliparamba Taluk	6.25	6.19	8.23
Tellicherry Taluk	6.45	6.29	8.65
Cannanore District	6.38	6.22	7.31
Kerala State	6.02	5.92	6.67

Source: Superintendent of Census Operations, Kerala.

CENSUS HOUSES BY CATEGORIES AND BY

Sl. No.	Category of Census House
1	2
1	Total No. of census houses
2	Vacant census houses
3	Occupied census houses used as Dwellings
4	" Shop cum dwellings
5	" Workshop-cum-dwellings
6	Hotels, Sarais, Dharmasalas, Tourists homes and Inspection houses
7	Shops excluding eating houses
8	Business houses and offices
9	Factories, workshops and worksheds
10	Schools and other educational institutions including training classes - coaching and shop classes

HOUSING

2.4

RURAL URBAN IN CANNANORE DISTRICT (1961)

Distribution of 1000 Census houses			Distribution of 1000 hou- ses between rural & urban	
Total	Rural	Urban	Rural	Urban
3	4	5	6	7
1000	1000	1000	831	169
112	108	129	806	194
769	792	656	856	144
2	2	1	946	54
1	1	1	711	289
1	1	2	644	456
48	41	86	699	301
6	4	14	582	418
20	14	48	587	413
5	6	5	848	152

II.
Table

1	2
11	Restaurants, sweet meat shops and eating places
12	Places of entertainments and community gathering (Panchayat ghar)
13	Public health and medical Institutions, hospitals, health centres, Doctors clinics, dispensaries etc.
14	Others

*N =

Source: Superintendent of

HOUSING

2.4 (Contd.)

3	4	5	6	7
21	21	23	815	185
1	N*	2	505	495
1	1	3	627	373
13	9	30	604	396

Negligible

Census Operations, Kerala.

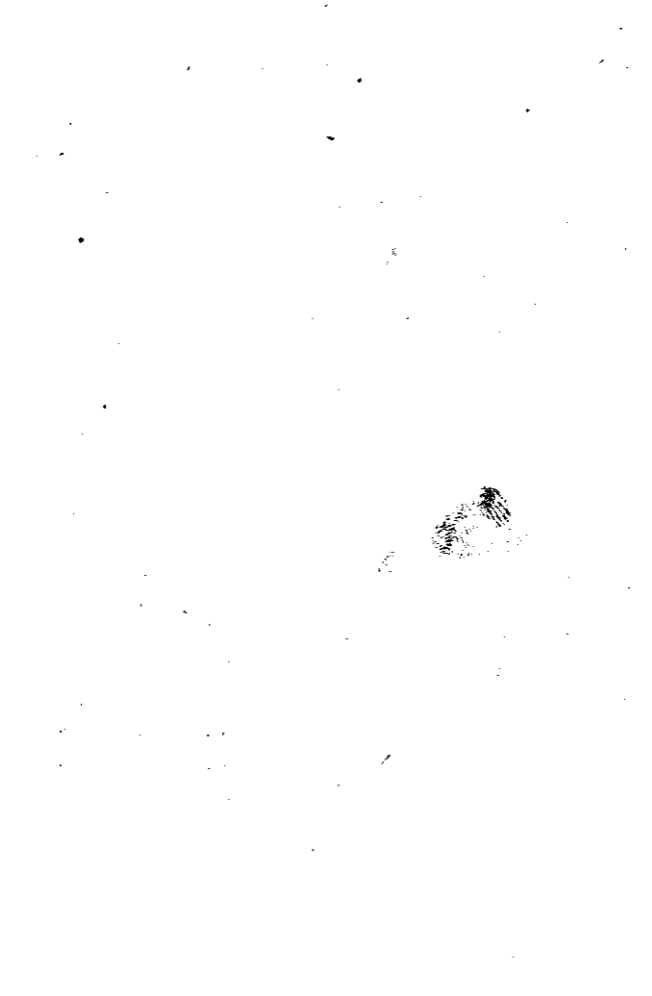
II. HOUSING

Table 2.5

TALUK-WISE DISTRIBUTION OF 1000 HOUSEHOLDS ACCORDING TO STATUS
OF TENURES AND BY RURAL AND URBAN 1961

Taluk/District	Total						
	Rural			Urban			
	Owned	Rented	Total	Owned	Rented	Total	
1	2	3	4	5	6	7	
Cannanore District	815	185	837	163	688	312	
Cannanore Taluk	786	214	846	154	673	327	
Hosdurg Taluk	963	37	973	27	920	80	
Kasaragod Taluk	459	541	456	544	478	522	
North Wynad Taluk	770	230	770	230	
Taliparamba Taluk	934	66	938	62	858	142	
Tellicherry Taluk	899	101	920	80	624	376	

Source: Superintendent of Census Operations, Kerala.



II.
 Table

TALUK-WISE DISTRIBUTION OF 1000 HOUSEHOLDS

Material of Wall	Cannanore District		Cannanore Taluk		Hosdurg Taluk
	Rural	Urban	Rural	Urban	Rural
1	2	3	4	5	6
Grass leaves, reeds or bamboo	101	35	7	15	173
Timber	2	3	2	2	N
Mud	242	126	44	...	552
Unburnt bricks	382	302	677	494	93
Burnt bricks	42	65	4	...	14
Stone	224	468	266	489	168
Cement concrete	1	1
All other material	6	N

N =

Source: Superintendent of

HOUSING

2.6

BY MATERIAL OF WALL OF THEIR DWELLINGS 1961

		Kasaragod Taluk		North Wy-nad Taluk		Taliparamba Taluk		Telli-cherry Taluk	
Urban	Rural	Urban	Rural	Urban	Rural	Urban	Rural	Urban	Rural
7	8	9	10	11	12	13	14	13	14
117	44	23	362	115	...	78	22		
2	1	...	3	2	...	3	17		
160	869	562	16	80	4	2	...		
73	N	...	471	544	324	449	317		
366	...	1	59	16	...	117	1		
282	86	409	68	216	672	351	643		
...	...	4	17		
...	N	1	4	27	...	N	...		

Negligible

Census Operations, Kerala.

IL

Table

TALUK-WISE DISTRIBUTION OF 1000 HOUSEHOLDS

Materials of Roof	Cannanore Taluk		Cannanore Taluk	
	Rural	Urban	Rural	Urban
1	2	3	4	5
Grass leaves, reeds, thatch wood and Bamboo	703	422	556	401
Tiles, Slate, shingle	297	577	444	598
Corrugated iron, zinc or other metal sheets	N	N	...	1
Asbestos cement sheet	N	N	...	N
Concrete and stone slabs	N	1	...	N
All other materials	N

N=

Source: Superintendent of

HOUSING

2.7

ACCORDING TO MATERIAL OF ROOF 1961

Hosdurg Taluk		Kasaragod Taluk		North Wynad Taluk	Tali-paramba		Telli-cherry Taluk	
Rural	Urban	Rural	Urban	Rural	Rural	Urban	Rural	Urban
6	7	8	9	10	11	12	13	14
703	553	811	381	789	572	306	798	421
297	446	189	617	208	427	694	202	578
...	...	N	...	1
...	1	1
...	1	...	1	1	1	...	N	1
...	...	N	...	N

Negligible

Census Operations, Kerala.

II. HOUSING
Table 2.8
TALUK-WISE DISTRIBUTION OF 1000 HOUSEHOLDS ACCORDING TO
NUMBER OF ROOMS 1961

District/Taluk	No. regular room	2	3	4	5	6	Five rooms and more
Cannanore District	2	237	263	192	126	140	
Cannanore Taluk	1	111	222	201	201	264	
Hosdurg Taluk	...	403	302	141	72	82	
Kasargod Taluk	3	367	295	161	86	88	
North Wynad Taluk	2	452	311	143	52	40	
Taliparamba Taluk	4	330	278	178	98	112	
Tellicherry Taluk	1	200	229	256	162	152	

Source: Superintendent of Census Operations, Kerala.

II. HOUSING

Table 2.9

NUMBER OF PERSONS PER ROOM AND PERSONS PER HOUSEHOLD IN
CANNANORE DISTRICT 1961

Number of rooms	Number of persons per room			Number of persons per household		
	Total	Rural	Urban	Total	Rural	Urban
1	2	3	4	5	6	7
Total	2.15	2.14	2.18	6.05	5.92	6.79
One room	4.80	4.80	4.86	4.80	4.80	4.86
Two rooms	2.84	2.81	3.02	5.68	5.63	6.04
Three rooms	2.10	2.05	2.35	6.29	6.14	7.06
Four rooms	1.74	1.70	1.95	6.95	6.78	7.79
Five rooms and more	1.22	1.19	1.36	8.08	7.82	9.19

Source: Superintendent of Census Operations, Kerala.

II. HOUSING

Table 2.10

NO. OF OCCUPIED RESIDENTIAL HOUSES PER SQ. MILE AND PER SQ. K. M.
IN CANNANORE DISTRICT

Year	Area in		No. of Residential houses	Residential houses per	
	Sq. Mile	Sq. K.M.		Sq. Mile	Sq. K.M.
1	2	3	4	5	6
1921	2191.3	5675.5	151724	69.24	26.73
1931	2191.3	5675.5	171801	78.40	30.27
1941	2191.3	5675.5	192959	88.06	34.00
1951	2191.3	5675.5	212148	96.81	37.38
1961	2191.3	5675.5	278556	127.12	49.08

Source: Superintendent of Census Operations, Kerala.

III. MEDICAL AND PUBLIC HEALTH

This Section gives information on:-

- i. Medical Institutions and Beds.
- ii. In and Out Patients treated in T. B. Sanatorium, Pariyaram
- iii. Patients treated in Ayurvedic Hospitals.
- iv. Patients treated in Ayurvedic dispensaries.
- v. Persons sterilised according to age and sex.
- vi. Sterilised persons according to Religion.

III. MEDICAL AND PUBLIC HEALTH

Table 3.1

MEDICAL INSTITUTIONS AND BEDS

Sl. No.	Institutions	Cannanore District				Kerala State
		1963-64	1964-65	1965-66	1965-66	
1	2	3	4	5	6	
I. Modern Medicine						
(a)	Government Hospitals	6	6	7	101	
(b)	Government dispensaries & other Institutions*	38	39	41	390	
(c)	Number beds	929	957	1215	18526	
II. Indigenous Medicine						
(a)	Government hospital	3	3	3	45	
(b)	Government Dispensaries	17	17	17	219	
(c)	Number of beds	30	30	30	891	

* Note: Includes primary and secondary Health Centres, M. C. H. Centres, Dispensaries including T. B. Centres and grant in aid institutions.

Source: Department of Health Services.



III. MEDICAL

Table

IN AND OUT PATIENTS TREATED IN T. B.
DISTRICT DURING

Name of Institution	Year	Number of Beds
1	2	3
T. B. Sanatorium, Pariyaram in Cannanore District	1962-63	266
	1963-64	266
	1964-65	266
	1965-66	376

Source : Directorate of

AND PUBLIC HEALTH

3.2

SANATORIUM, PARIYARAM IN CANNANORE
1962-63 to 1965-66.

Out Pati- ents	Number of Patients				
	Total treated	Cured and relieved	Died	Other- wise dis- charged	Rema- ining at the end of the year
4	5	6	7	8	9
10621	11189	6	34	...	528
17178	18036	610	34	...	214
15898	17006	420	33	442	213
15622	16580	285	30	400	143

Health Services, Kerala.

III. MEDICAL

Table

PATIENTS TREATED IN AYURVEDIC HOSPITALS OF

District/ State	Category	Total trea- ted	In-Patients		
			Cured	Re- leased	Other- wise dis- charged
0	1	2	3	4	5
Canna- nore	Govern- ment Ayur- vedic Hos- pital	284	242	12	...
Kerala	Do	8489	7155	454	436

Source: Administration Report 1965-66.

AND PUBLIC HEALTH

3.3 (a)

CANNANORE DISTRICT DURING 1965-1966

Out Patients				
Died	Old cases	New cases	Total Treated	Total inpatients and out patients
6	7	8	9	10
....	121086	38128	159214	159498
18	1794925	734855	2529780	2538269

of the Department of Indigenous Medicine.

III. MEDICAL

Table

PATIENTS TREATED IN AYURVEDIC DISPENSARIES

District/ State	Category	Total Patients		
		Old cases	New cases	Men
0	1	2	3	4
Cannanore	Government Ayurvedic Dispensaries	301669	154134	167080
Kerala	do	5043826	2250166	2051214

Source: Administration Report of Department.

AND PUBLIC HEALTH

3.3 (b)

OF CANNANORE DISTRICT DURING 1965-66

Treated		Total	Value of Medicines supplied (Rs.)
Women	Children		
5	6	7	8
167910	120813	455803	71680.05
2721903	2520875	7293992	903158.01

of Indigenous Medicine 1965-66.

III. MEDICAL

Table

PERSONS STERILISED

Sterilisation in Cannanore district during 1964-65						
Age Group	Males operated		Females operated		Total	
	No.	Percentage excluding not recorded	No.	Percentage excluding not recorded	No.	Percentage excluding not recorded
1	2	3	4	5	6	7
15-19	1	0.23	1	0.07
20-24	2	0.19	34	7.85	36	2.42
25-29	54	5.13	140	32.33	194	13.06
30-34	162	15.41	141	32.56	303	20.40
35-39	327	31.08	94	21.72	421	28.36
40 and above	507	48.19	23	5.31	530	35.69
Not recorded	529	...	10	...	539	...
Total	1581	100.00	443	100.00	2024	100.00

Source: Bureau of Economics

AND PUBLIC HEALTH

3.4

ACCORDING TO AGE AND SEX

Sterilisation in Cannanore District during
1965-66

Males operated		Females operated		Total	
No.	Percentage excluding not recorded	No.	Percentage excluding not recorded	No	Percentage excluding not recorded
8	9	10	11	12	13
...	...	1	0.30	1	0.81
3	0.34	23	6.78	26	2.11
39	4.37	59	17.41	98	7.95
119	13.33	101	29.79	220	17.86
253	28.33	105	30.97	358	29.06
479	53.64	50	14.75	529	42.94
588	...	92	...	680	...
1481	100.00	431	100.00	1912	100.00

III. MEDICAL

Table

STERILISED PERSONS

Religion	1964-65				
	Male		Female		
	No.	Per-centage	No.	Per-centage	No.
1	2	3	4	5	6
Hindus	748	86.87	334	85.00	1082
Christians	66	7.67	15	3.81	81
Muslims	47	5.46	44	11.18	91
Not recorded	720	...	50	...	770
Total	1581	100.00	443	100.00	2024

Source: Bureau of

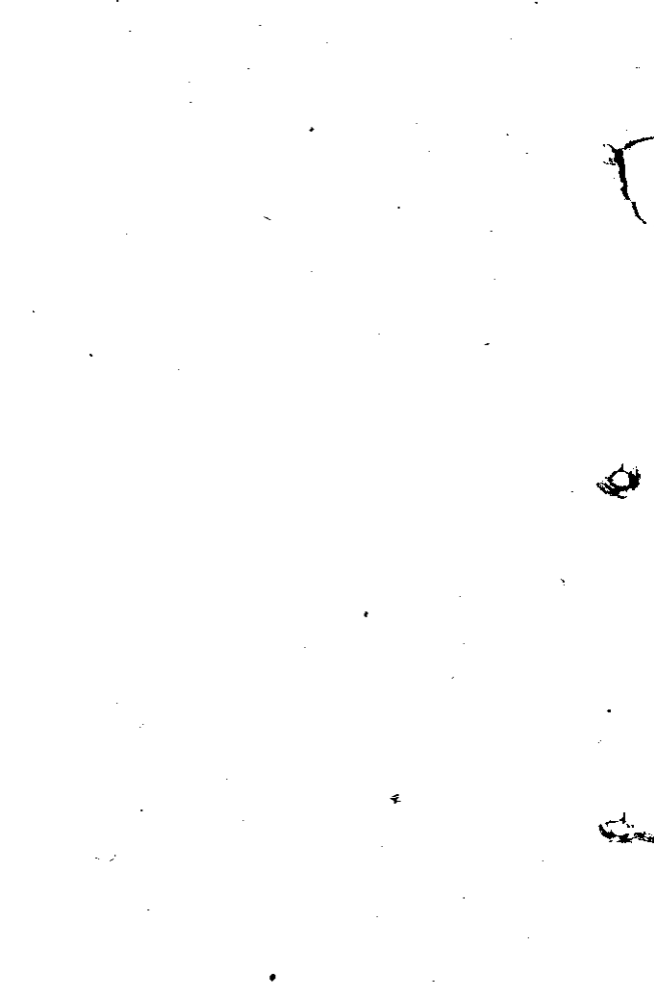
AND PUBLIC HEALTH

3.5

ACCORDING TO RELIGION

1965-66						
Total	Male		Female		Total	
Per-centage	No.	Per-centage	No.	Per-centage	No.	Per-centage
7	8	9	10	11	12	13
86.28	1171	87.78	351	82.01	1522	86.38
6.46	77	5.77	34	7.94	111	6.30
7.26	86	6.45	43	10.05	129	7.32
...	147	...	3	...	150	...
100.00	1481	100.00	431	100.00	1912	100.00

Economics and Statistics.



IV. RAINFALL

The meteorological data given in this part of the Hand Book relate to the rainfall in Cannanore District. The average annual and monthly rainfall in rain recording stations, monthly rainfall from 1962 to '66 (month-wise) and the average annual rainfall for the district as compared to the state are also given.

AVERAGE ANNUAL RAINFALL AT RAIN RECORDING

Name of centres	Annual rainfall (m. m.)
1	2
Kasaragod	3478.5
Taliparamba	2736.7
Cannanore	2410.1
Hosdurg	2781.8
Tellicherry	2495.1
Irrikur	2967.7
Payyanur	2687.5
Mananthody	1753.7
Mahe	2812.8
Kasaragod-Agromet	3051.0

Source: Bureau of Economics

RAINFALL

4.1

CENTRES IN CANNANORE DURING 1965 & 1966

1965	1966	
Average monthly rainfall (m. m)	Annual rainfall (m. m)	Average monthly rainfall (m. m)
3	4	5
289.87	3601.0	300.08
228.05	2588.3	215.69
200.84	2501.3	208.44
231.82	2863.8	238.65
207.93	2695.4	224.62
247.30	2583.2	215.27
223.96	2866.9	238.91
146.14	1984.7	165.39
234.40	2540.5	211.71
254.25	2146.6	178.88

and Statistics, Kerala.

IV.

Table

AVERAGE MONTHLY-RAINFALL

Month	1962	1963
1	2	3
January	13.5	29.5
February	29.2	7.0
March	0.8	30.2
April	31.9	68.3
May	619.6	151.7
June	311.8	588.5
July	1118.2	1019.4
August	825.6	776.2
September	308.8	163.3
October	407.2	273.8
November	9.3	26.6
December	45.7	19.1

Source: Bureau of Economics

RAINFALL

4.2

(IN M. M) IN CANNANORE DISTRICT

1964	1965	1966
4	5	6
...	...	2.3
5.8
6.5	...	16.4
58.5	53.6	46.2
55.8	94.1	132.2
540.8	956.1	679.1
825.6	757.6	752.1
707.9	414.2	320.2
284.6	169.0	219.2
112.0	91.5	345.9
96.7	78.3	192.5
29.7	112.8	8.1

and Statistics, Trivandrum.

IV. RAINFALL

Table 4.3

AVERAGE ANNUAL RAINFALL (M.M) IN CANNANORE DISTRICT AND
KERALA STATE (July to June)

District/State	Annual Rainfall in						
	60-61	61-62	62-63	63-64	64-65	65-66	
I	2	3	4	5	6	7	
Cannanore District	3813.3	4800.0	3590.0	2945.8	3160.3	2499.6	
Kerala	3733.5	3309.5	3125.3	2465.1	3145.8	2209.0	

Source: Bureau of Economics & Statistics, Trivandrum.

V. AGRICULTURE

The Statistics relating to Agriculture have been dealt with in this Section. Area under important crops, production of important crops, Agricultural machinery and implements and production of rice for Cannanore district as well as for the State are given to have an idea of the districts share in the state total classification of area, soil and other details relevant to agriculture have been given.

CLASSIFICATION OF AREA-CANNANORE

Classification

Total Geographical area according to village papers

Forests

Land put to non-agricultural uses

Barren and uncultivable land

Permanent pastures and other Grazing land

Land under miscellaneous tree crops not included in the area sown

Cultivable waste

Fallow land other than current fallow

Current fallow

Net area sown

Area sown more than once

Total cropped area

Source: Bureau of Economics

AGRICULTURE

5.1

DISTRICT—(Area in Hects.) Year—July to June

1963-64	1964-65	1965-66
576661	576661	576661
67099	65932	65932
42386	42641	44005
25183	24779	24555
14794	14795	12000
93205	95756	96190
34857	31690	28520
19758	14715	14540
3956	6605	6420
275423	279748	284499
36633	377226	37993
312056	316974	322492

and Statistics.

V.

Table

AREA AND IMPORTANT

Crops	Cannanore
	1964-65
Rice	95228
Pulses	3063
Sugar crops	371
Pepper	43765
Ginger	478
Turmeric	231
Cardamom	392
Betelnuts	11115
Mangoes	5532
Bananas (including plantain)	7692
Cashewnuts	31115
Tapioca	7723
Coconut	69944
Tea	1512
Coffee	2185
Rubber	12774

Source: Bureau of

AGRICULTURE

5.2

CROPS (Area in Hectares)

District	Kerala State		
	1965-66	1964-65	1965-66
	94244	801121	802329
	3030	43595	43312
	333	9510	9193
	43765	99552	99695
	483	11973	11847
	231	4614	4464
	392	28684	28684
	12087	59488	64478
	5238	63317	62217
	8488	45199	47779
	31642	85974	31642
	7523	209371	229684
	73716	558991	586313
	1512	39356	39470
	2645	21733	23602
	12834	146952	149634

V.
Table
PRODUCTION OF

Crops	Unit
Rice	Tonnes
Pulses	"
Sugarcane	"
Pepper	"
Ginger	"
Turmeric	"
Cardamom	"
Betelnuts	Million nuts
Banana	Tonnes
Cashewnuts	"
Other plantain	"
Tapioca	"
Coconut	Million nuts
Cotton	(Bales of 180 Kg. each)
Tea	Tonnes
Coffee	"
Rubber	"

Source : Bureau of

AGRICULTURE

5.3

IMPORTANT CROPS

Cannanore	District	Kerala State	
		1964-65	1965-66
121832	107594	1121383	997489
1096	1078	17061	16901
1453	1453	44034	40948
6859	6447	22228	21685
406	406	11328	11190
208	208	3910	3766
22	22	1606	1606
1390	1511	8945	9681
11665	12976	78135	77421
34911	35502	96463	98025
46511	51215	263251	283701
67885	66127	2763197	3095658
117	282	3278	3293
...	...	9851	6933
1076	1091	42075	39154
1088	1088	9685	9878
1265	1814	40065	46953

V. AGRICULTURE

Table 5.4

INDEX NUMBER OF AGRICULTURAL PRODUCTION - KERALA STATE
(Base : 1956-57 = 100)

Name of crops	1960-61	1964-65	1965-66
All Crops	112.1	120.0	118.5*
A. Food grains	119.8	125.8	112.1
1. Cereals	120.1	126.1	112.3
Paddy	120.2	126.3	112.4
Jowar	72.7	63.4	51.1
Ragi	117.6	109.6	104.1
2. Pulses	93.9	91.7	90.5
B. Non-foodgrains	108.9	117.6	121.2*
Oil seeds	102.3	104.7	105.5
Coconut	102.5	104.3	104.8
Groundnut	86.8	137.3	158.6

V. AGRICULTURE

Table 5.4 (Contd.)

Name of crops	1960-61	1964-65	1965-66
Sesamum	40.1	37.2	36.7
Lemongrass	168.4	157.7	157.7
3. Fibres	106.1	98.5	69.3
Cotton	106.1	98.5	69.3
4. Plantation crops	112.3	141.1	144.9*
Tea	116.3	121.1	112.7*
Coffee	110.3	144.2	147.1
Rubber	106.4	185.0	216.8
5. Miscellaneous crops	114.6	119.2	126.5
Sugarcane	106.4	123.0	114.4
Pepper	99.2	81.6	79.6
Cardamom	100.2	100.4	100.4

V. AGRICULTURE
Table 5.4 (Contd.)

Name of crops	1960-61	1964-65	1965-66
Ginger	103.6	104.1	102.9
Turmeric	99.7	93.2	89.8
Areca nut	116.9	135.0	146.1
Banana	102.2	122.4	121.3
Cashewnut	144.2	164.4	167.0
Tobacco	150.4	137.4	136.0
Tapioca	116.4	110.5	123.8

* Revised

Source: Bureau of Economics and Statistics, Kerala



ESTIMATED AREA AND YIELD OF DRY

Taluk/ District	1964-65				
	Virippu		Mundkan		Punja
	Cropped area	Mean yield of dry paddy	Cropped area	Mean yield of dry paddy	Cropped area
North Wynad	7386	1843	486
Tellicherry	9056	1472	3373	1614	...
Cannanore	9762	1900	2284	1217	...
Taliparamba	10137	1641	6226	1529	...
Hosdurg	14357	2156	3777	2225	477
Kasaragod	23109	2266	4589	2594	208
Total	66421	1985	27635	1870	1171

Source : Bureau of Economics &

AGRICULTURE

5.5

PADDY IN KG./HECTARES (Area in Hectares)

1965-66						
Virippu		Mundakan		Punja		
Mean yield of dry paddy	Cropped area	Mean yield of dry paddy	Cropped area	Mean yield of dry paddy	Cropped area	Mean yield of dry paddy
1085	7327	1443	486	1987
...	9056	1737	3245	1000
...	9762	1882	1996	1163
...	10137	1601	5715	1254
2125	14357	2195	3822	1368	490	1467
1930	23109	1826	4534	2125	208	1710
1656	66421	2000	26639	1433	1184	1314

Statistics, Kerala.

V. AGRICULTURE

Table 5.6

CLASSIFICATION OF SOIL OF CANNANORE DISTRICT

Type of soil	Details of Distribution
1. Sandy loam	Nil
2. Clay loam with much ability	Nil
3. Sandy soil	Coastal area
4. Laterite soil	Major part barring coastal area

Source: Bureau of Economics and Statistics, Kerala.

V. AGRICULTURE

Table 5.7

LIST OF PADDY SEED FARMS AND RESEARCH STATIONS

	Name of Stations	Taluk
1.	A. R. S. Nileshwar (Areca nut)	Hosdurg
2.	P. R. S. Taliparamba (Pepper)	Taliparamba
3.	T. R. S. Kanhangad (Tobacco)	Hosdurg
4.	Agriculture Research Station	Taliparamba
	<u>Seed farms</u>	
1.	State seed farm, Kankole, Kankole	Kankole
2.	Kasaragod State seed farm	Kasaragod
3.	State seed farm, Vengadu	Vengadu
4.	State seed farm, Pullur	Pullur

Source: Director of Agriculture.

V. AGRICULTURE

Table 5.8

IMPORTANT MARKETS FOR AGRICULTURAL COMMODITIES

Market	Commodities
1. Cannanore	Coconut oil, copra, oil cake, coconut, tapioca-raw, Banana
2. Tellicherry	Copra, coconut, pepper, ginger-dry, Arecanut-ripe, Banana, Tapioca-raw and dry, tobacco.
3. Baliapattom	Pepper, Ginger-dry, Arecanut-dry, Tapioca-raw and dry banana
4. Kanhangad	Coconut oil, pepper, Arecanut-dry
5. Kasaragod	Pepper, Arecanut-ripe, Banana, Cashew nut.

Source: Director of Agriculture, Kerala.



Item

Ploughs

Wooden

Iron

Carts

Sugarcane crushes

Power

Bullocks

Oil engines with pumps for Irrigation

Electric pumps for irrigation

Tractors

Ghanies : 5 Kg. and more

Less than 5 Kg.

Source: Tenth quinquennial livestock

AGRICULTURE

5.9

IMPLEMENTS

Cannanore District		Kerala State	
1961	1966	1961	1966
62360	55275	562281	475930
604	914	6441	17179
695	445	21040	16309
7	19	175	457
81	75	1071	989
720	1870	3372	6824
15	76	2565	4869
12	26	276	418
298	82	2058	692
350	52	2169	628

census - 1966 Census Report.

V. AGRICULTURE

Table 5.10

AGRICULTURAL LABOURERS OF CANNANORE DISTRICT AND KERALA STATE BY SEX (1961 Census)

	Cannanore			Kerala State		
	Male	Female	Total	Male	Female	Total
Agricultural labourer	47275	62776	110051	516914	461482	978396

Source: 1961 Census

V. AGRICULTURE

Table 5.11

INDEX NUMBER OF AGRICULTURAL PRODUCTIVITY (Base : 1956-57 = 100)

Item	1960-61	1964-65	1965-66
All Crops	103.2	107.9	103.9
A. Food crops	118.7	121.5	108.2
1. Cereals	117.7	120.3	106.9
Paddy	117.8	120.4	106.9
Jowar	96.9	95.2	81.2
Ragi	105.1	105.2	101.7
Pulses	102.2	100.6	100.2
B. Non-food grains	95.2	100.6	99.5
1. Oil seeds	93.9	92.7	92.5
Coconut	94.1	91.4	87.0
Groundnut	72.4	126.4	139.4

V. AGRICULTURE

Table 5.11 (Contd.)

Item	1960-61	1964-65	1965-66
Sesamum	65.7	61.4	60.9
Lemongrass	108.8	108.9	108.9
2. Fibres	98.1	102.8	87.9
Cotton	98.1	102.8	87.9
3. Plantation crops	87.0	92.8	93.2
Tea	122.4	122.0	112.6
Coffee	95.5	96.5	90.7
Rubber	71.3	103.6	119.3
4. Miscellaneous crops	98.4	106.9	108.0
Sugarcane	90.2	100.2	96.4
Pepper	86.5	71.3	69.5
Cardamom	99.9	99.8	99.8

V. AGRICULTURE

Table 5.11 (Contd.)

Item	1960-61	1964-65	1965-66
Ginger	8.75	82.2	88.2
Turmeric	99.9	94.4	94.1
Arecanut	106.9	107.9	107.7
Banana	100.0	111.9	111.9
Cashewnut	99.8	111.7	111.6
Tobacco	100.8	97.2	96.2
Tapioca	100.3	110.2	112.5

Source: Bureau of Economics and Statistics, Kerala.



VI. LIVESTOCK AND VETERINARY SERVICES

The information presented in this section relate to the livestock, Veterinary Institutions and the livestock treated therein. The source of livestock statistics is the quinquennial census held in 1961 and 1966. A study on the livestock population of 1961 and 1966 have been made and the variation in figures and percentage for the district as well as for the state has been given in table No. 6.4.

VI. LIVESTOCK AND

Table

LIVESTOCK POPULATION OF CANNANORE DISTRICT

District/ State	Year	Cattle	Buffa- loes	Sheep	Goats	Pigs
1	2	3	4	5	6	7
Cannanore District	1961	383033	46486	195	87217	1288
	1966	400036	46098	647	102075	3320
Kerala State	1961	2753165	485089	24241	1312262	122381
	1966	2856727	471235	11519	1189218	111928

Source: Livestock Census

VETERINARY SERVICES

6.1

AND KERALA STATE 1961 AND 1966

Horses and ponies	Others			Total	Total live- stock	poultry
	Camel	Mules	Don- keys			
8	9	10	11	12	13	14
25	Nil	Nil	1	1	518245	708371
41	Nil	Nil	Nil	Nil	552217	826434
408	Nil	31	337	408	4697954	9106320
426	4	8	310	322	4641375	9908987

1961 and 1966.

V. LIVESTOCK AND

Table

LIVESTOCK SLAUGHTERED IN MUNICIPALITIES

Name of Municipality	Year 1965				
	Cows, Bulls & Bullocks	Buffaloes	Sheep	Goats	Others
Cannanore	2997	207	1916	9491	...
Tellicherry	2689	...	9306	...	342

Source :

VETERINARY SERVICES

6.2

OF CANNANORE DISTRICT 1965 AND 1966

Year 1966						
Total	Cows, Bulls & Bullocks	Buffa- loes	Sheep	Goats	Others	Total
14611	2920	210	7785	3032	...	13947
12337	3495	...	9418	12883

Municipalities.

V. LIVESTOCK AND
Table

LIVESTOCK TREATED IN VETERINARY

Sl. No.	Description	1960-61
1.	Cases of antirabic treatment done	301
2.	Inpatients treated	...
3.	Out patients treated	37754
4.	No. of castration performed	1150
5.	Obsterical cases	201
6.	Other operations	861

Source : Animal

VETERINARY SERVICES

6.3

INSTITUTIONS OF CANNANORE DISTRICT

1961-62	1962-63	1963-64	1964-65
536	565	786	836
...
34174	53943	76608	109710
1399	2563	2766	3256
460	449	453	701
912	1733	1949	2427

Husbandry Department.

VI. LIVESTOCK AND

Table

LIVESTOCK POPULATION OF CANNANORE

Category	Cannanore	
	1961	1966
1		3
Total Cattle	383033	400036
CATTLE		
1) Males over 3 years	80647	73770
2) Females „ 3 „	163291	172331
3) Young stock	139095	153935
Total Buffaloes	46486	46098
BUFFA- LOES		
1) Males over 3 years	20916	19039
2) Females „ 3 „	18313	17723
3) Young stock	7257	9336
Sheep	195	647
Goats	87217	102075

VETERINARY SERVICES

6.4

DISTRICT AND KERALA -1961 and 1966

District		Kerala State			
Vari- ation	%Vari- ation	1961	1966	Vari- ation	%Vari- ation
4	5	6	7	8	9
+17003	+4.44	2753165	2856727	+103562	+3.76
-6877	-8.53	566031	519523	-46508	-8.22
+9040	+5.54	1161986	1219242	+57256	+4.93
+14840	+10.66	1025148	1117962	+92814	+9.05
-388	-0.83	485089	471235	-13854	-2.86
-1877	-8.97	285112	253850	-31262	-10.96
-590	-3.22	135113	134770	-343	-0.25
+2079	+28.64	64864	82615	+17751	+27.37
+452	+231.79	24241	11519	-12722	-52.48
+14858	+17.04	1312262	1189218	-123044	-9.38

VI. LIVESTOCK AND

Table

	2	3
Horses and Ponnies	25	41
Mules and donkey	1	Nil
Camels	Nil	Nil
Pigs	1288	3320
Total Livestock	518245	552217
Total Poultry	708371	826434
1) Fowls	707145	825516
POULTRY 2) Ducks	879	773
3) Others	347	145

Source: Livestock

VETERINARY SERVICES

6.4 (Contd.)

4	5	6	7	8	9
+16	--64	408	426	+16	+3.92
-1	-100	408	318	-90	-22.06
Nil	Nil	...	4	+4	+100.00
+2032	+157.76	122381	111928	-10453	-8.54
+33972	+6.56	4697954	4641375	-56579	-1.20
+118063	+16.67	9106320	9908987	+802667	+8.81
+118371	+16.74	8708664	9587286	+878622	+10.09
+106	-12.05	387072	318751	-68321	-17.65
-202	-58.21	10584	2950	-7634	-72.13

Census 1961 and 1966.

VI. LIVESTOCK

Table

VETERINARY HOSPITALS

District/State	Hospitals					
	62-63	63-64	64-65	65-66	66-67	62-63
Cannanore	2	2	2	2	2	17
Kerala	60	60	60	60	63	140

Source : Department of Animal

AND VETERINARY

6.5

AND DISPENSARIES

Dispensaries				Mobile Dispensaries				
63-64	64-65	65-66	66-67	62-63	63-64	64-65	65-66	66-67
27	26	19	19	1	1	1	1	1
186	185	186	198	3	4	5	7	11

Husbandry, Kerala.

VII. FORESTS

This Section deals with the area of Reserved forests and reserved lands in Cannanore District and Kerala. The out turn of Major Forest Produce for the district and the State and the area of forest plantations are also given. The source for all these information are the forest department.

VII. FORESTS

Table 7.1

AREA OF RESERVED FORESTS AND RESERVED LANDS (1965-1966)

Place	Reserved forests area in hectares	Reserved lands area in hectares
1	2	3
Cannanore District (Wynad Division)	43986.87	1957.00
Kerala State	883185.56	17791.4

Source: Forests Department, Government of Kerala.

VII. FOREST

Table 7.2

OUT-TURN OF MAJOR FOREST PRODUCE IN 1965-1966

Sl. No.	Type of Product	Unit	Cannanore District		Keral State
			Wynad Division		
1	2	3	4	5	
1.	Timber in round logs	Cub. Metres	17882	437677	
2.	Timber in round poles	Nos.	10919	251019	
3.	Sawn and sward Timber	M.T.	3.310	59336 B G. Unit + 13.307 Tonnes + 3474. C. M.	
4.	Fuel	M.T.	Nil	163255	

Source: Chief Conservator of Forests, Trivandrum.

VII. FOREST

Table 7.3

AREA OF FOREST PLANTATIONS IN 1965-1966

Sl. No.	Type of Plantation	Cannanore District
1	2	3
1.	Teak Plantation in hectares	3570.14
2.	Jungle wood plantation in hectares	Nil
3.	Soft wood "	2492.86
4.	Cashew "	697.27
5.	Red Gum "	Nil
6.	Others (Specify) (i) Bamboo Plantation in hectares	70.82
	(ii) Eucalyptus "	147.71
	(iii) Mixed "	297.85
	(iv) Other "	111.69

Source: Chief Conservator of Forests, Kerala.

VIII. ELECTRICITY

The number of Consumers of Electricity from 1961-1962 onwards, is given below in this Section.

VIII. ELECTRICITY

Table 8.1

NUMBER OF CONSUMERS OF ELECTRICITY

Electrical Division/State	Number of Consumers in				
	1961-62	1962-63	1963-64	1964-65	1965-66
Cannanore Electrical Division	16058	19996	22769	25362	33477
Kerala State	196529	225374	241200	280015	324111

Source: Kerala Electricity Board.



IX. INDUSTRIES, LABOUR AND EMPLOYMENT

This Section presents information regarding the number of Registered factories, the employment in these factories, Employment in plantations, Working of Employment Exchanges, Industrial disputes resulting in work stoppages, etc. Data for the latest period available has been incorporated. The taluk-wise 1961 census figures pertaining to the various aspects of the working population of the district has also been given.

IX. INDUSTRIES, LABOUR

Table

NUMBER OF REGISTERED FACTORIES IN

Sl. No.	Industry	1963
1	2	3
1	Canning and preservation of fruits and Vegetables	...
2	Canning and preservation of fish and other foods	...
3	Rice and flour mills	4
4	Sugar	...
5	Oil Mills	9
6	Tea factories	6
7	Cashew factories	4
8	Other food articles except beverages	3
9	Beedi and Cigar	24
10	Cotton textiles	214
11	Knitting	8
12	Coir	...
13	Other Textiles	...

AND EMPLOYMENT

9.1

CANNANORE DISTRICT AND KERALA STATE

Cannanore District			Kerala State			
1964	1965	1966	1963	1964	1965	1966
4	5	6	7	8	9	10
...	5	5	6	...
...	11	15	24	...
4	4	...	110	113	112	...
...	1	2	3	...
9	10	...	266	263	272	...
6	6	...	125	125	124	...
4	4	...	197	199	209	...
3	2	...	28	30	30	...
18	24	...	73	68	69	...
194	197	...	255	238	242	...
9	8	...	13	13	12	...
...	155	147	139	...
...	3	3	3	...

XI INDUSTRIES, LABOUR

Table 9.1

1	2	3
14	Umbrellas	...
15	Saw mills	26
16	Plywood	4
17	Other timber industries	16
18	Paper mills	1
19	Paper Board straw board and other paper products	2
20	Printing and binding	12
21	Rubber and Rubber products including tyre retreading	2
22	Artificial manures	...
23	Pharmaceuticals	...
24	Soaps	...
25	Other chemicals	1
26	Petroleum refineries etc.	NA
27	Bricks and Tiles	7
28	Glass	...
29	Pottery, china earthen ware	1
30	Cement	...

AND EMPLOYMENT

(Contd.)

4	5	6	7	8	9	10
...	18	18	19	...
27	27	...	173	194	222	...
4	4	...	14	14	14	...
16	17	...	189	195	207	...
1	1	...	2	2	2	...
2	2	...	3	3	5	...
11	12	...	189	187	194	...
2	2	..	113	111	125	...
...	9	14	9	...
...	17	21	20	...
...	1	...	7	7	31	...
1	35	40	28	...
...	NA	9	8	...
7	7	...	198	208	221	...
...	1	1	1	...
1	1	...	10	10	9	...
...	1	1	1	...

XI. INDUSTRIES, LABOUR

Table 9.1

1	2	3
31	Basic Metal industries	NA
32	Metal products except machinery and transport equipment	3
33	Agricultural implements	...
34	General and jobbing engineering	2
35	Other machinery except electrical machinery	2
36	Electrical machinery	2
37	Marine engines building and repairing	...
38	Repair of motor vehicles	10
39	Manufacture of bicycles	...
40	Other industries not classified above	7
Total		370

Source: Bureau of Economics

AND EMPLOYMENT

(Contd.)

4	5	6	7	8	9	10
1	1	...	NA	26	32	...
3	3	...	70	79	92	...
...	5	7	8	...
2	3	...	43	52	68	...
1	1	...	13	18	20	...
2	2	...	19	21	28	...
...	6	7	8	...
9	10	...	122	133	132	...
...	3	3	5	...
8	9	..	90	70	71	...
345	358	...	2587	2672	2820	...

and Statistics, Trivandrum.

IX. INDUSTRIES,

Table

EMPLOYMENT IN REGISTERED FACTORIES OF

Sl. No.	Industry
1	2
1.	Canning and Preservation of fruits and vegetables
2.	Canning and preservation of fish and other foods
3.	Rice and flour mills
4.	Sugar
5.	Oil Mills
6.	Tea factories
7.	Cashew factories
8.	Other food articles except beverages
9.	Beedi and Cigar
10.	Cotton textiles
11.	Knitting
12.	Coir

LABOUR AND EMPLOYMENT

9.2

CANNANORE DISTRICT AND KERALA STATE

Cannanore District				Kerala State			
1963	1964	1965	1966	1963	1964	1965	1966
3	4	5	6	7	8	9	10
...	428	411	447	380
...	677	1013	1539	1540
40	36	15	23	1555	1555	1512	1391
...	599	1184	1192	1156
52	48	82	80	1958	2034	2123	2117
166	171	164	153	6198	5789	5774	5916
1625	1402	1380	1278	78965	83850	88637	89996
345	337	298	301	1925	1978	1913	2058
587	520	616	765	2081	2312	2227	2093
7387	7603	8127	7473	15040	16852	16992	16267
226	172	290	253	497	512	542	507
...	7806	7159	6408	5884

IX. INDUSTRIES,

Table

1	2
13. Other textiles	
14. Umbrellas	
15. Saw Mills	
16. Plywood	
17. Other timber industries	
18. Paper mills	
19. Paper board, straw board and other paper products	
20. Printing and binding	
21. Rubber and rubber products	
22. Artificial manures	
24. Pharmaceuticals	
24. Soaps	
25. Other chemicals	
26. Petroleum refineries etc.	
27. Bricks and tiles	
28. Glass	

LABOUR AND EMPLOYMENT

9.2 (Contd.)

3	4	5	6	7	8	9	10
...	2769	2729	1988	2016
...	589	522	546	498
607	607	585	696	3773	3944	4164	4293
830	820	903	792	1623	1571	1676	1561
597	535	534	563	6385	6086	6518	6228
17	17	17	15	633	643	653	613
234	196	189	187	258	221	363	1965
129	119	137	177	4212	4350	4696	5033
9	8	104	115	3148	3182	3418	3558
...	2267	2420	3396	4088
...	639	770	736	761
...	...	9	...	1290	1275	684	1193
11	9	...	9	1736	1781	2733	2369
NA	NA	670	622	1097
624	566	582	546	13969	13751	13801	13593
...	306	271	300	360

IX. INDUSTRIES

Table

1	2
29. Pottery, China and earthen ware	
30. Cement	
31. Basic metal Industries	
32. Metal products except machinery and transport equipment	
33. Agricultural implements	
34. General and jobbing Engineering	
35. Other machinery except electrical machinery	
36. Electrical machinery	
37. Marine engines building and repairing	
38. Repair of motor vehicles	
39. Manufacture of bicycles	
40. Other industries not classified above	
	Total

Source: Bureau of Economics

LABOUR AND EMPLOYMENT

9.2 (Contd.)

3	4	5	6	7	8	9	10
37	37	37	47	692	664	561	527
...	384	372	372	399
NA	17	17	20	NA	2336	2191	2133
43	37	36	36	2912	2429	2814	2964
...	20	229	304	362	392
49	50	62	78	1969	2188	2542	2726
80	15	15	15	307	2068	2127	2495
59	58	58	58	667	805	1002	1434
...	700	777	827	1155
160	147	163	187	3428	3647	3667	3745
...	81	86	184	204
108	130	171	146	3160	1636	2567	1760
14022	13757	14590	14033	175855	186147	195456	198465

and Statistics, Trivandrum.

IX. INDUSTRIES, LABOUR AND EMPLOYMENT

Table 9.3

EMPLOYMENT IN PLANTATION-CANNANORE DISTRICT (Daily average)

Name of Plantations	Employment in Plantation						
	1960	1961	1962	1963	1964	1965	
	2	3	4	5	6	7	
Tea	2566	2469	2416	2471	2175	2360	
Coffee*	1517	2008	2016	2057	2175	2610	
Rubber*	7167	8485	8666	8666	8926	8968	
Total	11250	12972	13098	13194	13276	13938	

* Figures are provisional

Source: Bureau of Economics and Statistics, Kerala.

IX. INDUSTRIES, LABOUR AND EMPLOYMENT

Table 9.3 (a)

EMPLOYMENT IN TEA ESTATE - CANNANORE DISTRICT (daily average)

Category	Employment in Tea Estates during						
	1960	1961	1962	1963	1964	1965	
1	2	3	4	5	6	7	
Garden labour (in field)	2035	1943	1828	1819	1578	1602	
" (in factory)	139	137	121	136	122	141	
Outside labour (in field)	376	373	437	484	445	587	
" (in factory)	16	16	30	32	30	30	
Total	2566	2469	2416	2471	2175	2360	

Source: Bureau of Economics and Statistics, Kerala.

IX. INDUSTRIES LABOUR

Table

EMPLOYMENT IN COFFEE ESTATES—

Category	1959-60 1960-61		
	1	2	3
Garden Labour (Permanent)	448	593	
Outside labour (Permanent)	907	1201	
Outside labour (temporary)	162	214	
Total	1517	2008	

Source: Bureau of Economics

* Figures are

AND EMPLOYMENT

9.3 (b)

CANNANORE DISTRICT (Daily average)

* Employment in Coffee estates during

1961-62	1962-63	1963-64	1964-65
4	5	6	7
1206	1232	1304	769
595	606	641	1565
215	219	230	276
2016	2057	2175	2610

and Statistics, Kerala.

provisional.

IX. INDUSTRIES LABOUR

Table

EMPLOYMENT IN RUBBER ESTATES—

Category	1960	1961
1	2	3
Garden labour (Permanent)	3509	4159
Outside labour (Permanent)	1435	1701
Outside labour (Temporary)	2223	2635
Total	7167	8495

Source : Bureau of Economics

* Figures are

AND EMPLOYMENT

9.3 (c)

CANNANORE DISTRICT (daily average)

Employment in Rubber Estates (*)			
1962	1963	1964	1965
4	5	6	7
4242	4242	4369	4390
1735	1735	1787	1795
2689	2689	2770	2783
8666	8666	8926	8968

and Statistics, Kerala.

provisional

IX. INDUSTRIES LABOUR

Table

INDUSTRIAL DISPUTES, WORKERS
IN CANNANORE

Sl. No.	Industry	No. of disputes				
		1963	1964	1965	1966	1963
1	2	3	4	5	6	7
1	Plantation	1	2	...	1	14
2	Beedi	7	5	1	2	4741
3	Textiles	6	6	...	2	485
4	Tiles	3	2	1	2	207
5	Engineering
6	Timber and furniture	5	6	...	20	140
7	Printing presses	1	...	1	3	19
8	Miscellaneous	2	5	2	11	40
9	Rubber products

Source: Bureau of Economics

AND EMPLOYMENT

9.4

INVOLVED AND MANDAYS LOST BY INDUSTRY
DISTRICT

No. of workers involved			No. of mandays lost			
1964	1965	1966	1963	1964	1965	1966
8	9	10	11	12	13	14
256	...	37	14	304	...	74
10027	12872	774	5548	119942	12872	5979
2173	...	415	12204	37391	...	2490
82	107	312	2120	145	535	2554
...
500	...	523	2000	18617	...	5826
...	9	48	1045	...	54	324
122	1341	2184	66	7873	2161	9699
...

and Statistics, Trivandrum.

LABOUR AND EMPLOYMENT

Table 9.5 (a)

NUMBER OF APPLICANTS PLACED IN EMPLOYMENT THROUGH CANNANORE
EMPLOYMENT EXCHANGE DURING 64-65 and 65-66

Year	Sector					All
	Central Government	State Government	Quasi Government/Local body	Private		
1	2	3	4	5	6	
1964-65	33	1650	125	3	1811	
1965-66	15	2281	162	28	2486	

Source: National Employment service, Trivandrum.



LABOUR AND

Table

NO. OF APPLICATIONS ON THE LIVE REGISTER OF
OCCUPATIONAL GROUPS AS ON

Year	Professional technical and related workers	Administrative Executive and managerial workers	Clerical and related workers	Sales workers	Farmers, fishermen, hunters, loggers and re- lated workers
1	2	3	4	5	6
1965	431	32	52
1966	797	13	711	...	23

Source : National

EMPLOYMENT

9.5 (a)

EMPLOYMENT EXCHANGES ACCORDING TO BROAD
31-12-1965 AND 31-12-66

Miners, quarrymen and related workers	Workers in transport and communication occupa- tion	Craftsman, production process workers and labourers not elsewhere classified	Service, sport and recrea- tion workers	Workers not classifiable by occupation	All occupations
7	8	9	10	11	12
...	512
...	193	460	283	6725	9205

Employment Service.

IX. INDUSTRIES,

Table

DISTRIBUTION OF WORKERS BY INDUSTRIAL DISTRICT

Industrial Category	Number
1	2
Total workers	629719
As Cultivators	152971
As agricultural labourers	110051
In mining, quarrying, livestock, forestry, fishing, hunting etc.	39864
At household industry	40857
In manufacturing other than household industry	65351
In construction	6456
In trade and commerce	37870
In transport, storage and communications	12445
In other services	163854

Source: Superintendent of

LABOUR AND EMPLOYMENT

9.6 (a)

CATEGORY AND SEX IN CANNANORE (1961 Census)

Person		Male	Female	
Percentage	Number	Percentage	Number	Percentage
3	4	5	6	7
100.00	420728	100.00	208991	100.00
24.29	92047	21.88	60924	29.15
17.48	47275	11.24	62776	30.04
6.33	34045	8.09	5818	2.78
6.49	23349	5.55	17508	8.38
10.38	58045	13.80	7306	3.50
1.02	6191	1.47	265	0.13
6.01	34919	8.30	2951	1.41
1.98	11251	2.67	1194	0.57
26.02	113605	27.00	50249	24.04*

Census Operations, Kerala.

IX. INDUSTRIES, LABOUR

Table

WORKING POPULATION OF CANNANORE DISTRICT

Sl. No.	Category
1	2
1.	As cultivator
2.	As Agricultural labour
3.	In mining, quarrying, livestock, forestry, fishing, hunting, orchard and allied activities
4.	As household industry
5.	In manufacturing other than household industry
6.	In construction
7.	In trade and commerce
8.	In transport, storage and communication
9.	In other services
10.	Total workers

Source : Superintendent of

AND EMPLOYMENT

9.6 (b)

AND KERALA STATE BY INDUSTRIAL CATEGORY 1961

Cannanore District	Kerala State
3	4
152971	1178103
110051	978396
39864	487359
40857	488562
65351	529472
6456	70702
37870	321933
12445	152513
163854	1423293
629719	5630333

Census Operations, Kerala.

IX. INDUSTRIES LABOUR

Table

DISTRIBUTION OF NON-WORKERS OF

Age group	Non-workers	
	Persons	Male
1	2	3
All Ages	1150575	453939
0 - 14	737337	371674
15 - 34	226164	49914
35 - 59	118685	12214
60 and above	68227	20078
Age not stated	162	59

N - Negligible

Source: Superintendent of

AND EMPLOYMENT

9.7

CANNANORE DISTRICT BY AGE GROUP (1961)

Distribution/1000			
Female	Persons	Male	Female
4	5	6	7
696636	1000	1000	1000
365663	641	819	525
176250	197	110	253
106471	103	27	153
48149	59	44	69
103	N	N	N

Census Operations, Kerala.

X. INDUSTRIES LABOUR

Table

WORKERS (excluding Cultivators and Agricultural
DISTRICT

Occupational division	Persons
1	2
Professional, Technical and related workers	22910
Administrative, Executive and Mana- gerial workers	13958
Clerical and related workers	7429
Sales workers	35285
Farmers, Fishermen, hunters etc.	40206
Workers in transport and Communica- tion	7378
Miners, Quarrymen and related workers	1871
Craftsman, production process workers and labourers not elsewhere classified	216635
Service, sports and recreation workers	20313
Workers not classified by occupation	712
All Divisions	366697

Source: Superintendent

AND EMPLOYMENT

9.8

Labourers) BY OCCUPATIONAL DIVISION CANNANORE
1961 CENSUS

Workers		Percentage Distribution		
Male	Female	Persons	Male	Female
3	4	5	6	7
18343	4567	6.25	6.52	5.35
13779	179	3.81	4.90	0.21
7218	211	2.03	2.56	0.25
32441	2844	9.62	11.53	3.33
33981	6225	10.96	12.07	7.30
7360	18	2.01	2.62	0.02
1847	24	0.51	0.66	0.03
153853	62782	59.08	54.67	73.61
11904	8409	5.54	4.23	9.86
680	32	0.19	0.24	0.04
281406	85291	100.00	100.00	100.00

of census operations, Kerala.

IX. INDUSTRIES

Table

DISTRIBUTION OF 1000 PERSONS IN EACH TALUK

District/Taluk	Workers Persons
1	2
Cannanore District	354
Cannanore taluk	335
Hosdurg taluk	389
Kasaragod taluk	355
North Wynad taluk	409
Taliparamba taluk	391
Tellicherry taluk	316

Source: Superintendent of

LABOUR AND EMPLOYMENT

9.9

INTO WORKERS AND NON-WORKERS BY SEX -1961

Non-workers				
Male	Female	Persons	Male	Female
3	4	5	6	7
481	231	646	519	769
485	189	665	515	811
491	290	611	509	710
500	212	645	500	788
537	272	591	463	728
484	301	609	516	699
448	193	684	552	807

Census Operations, Kerala.

IX. INDUSTRIES LABOUR

Table

DISTRIBUTION OF 1000 WORKERS IN EACH TALUK

Taluk	Primary		
	Persons	Male	Female
1	2	3	4
Cannanore Taluk	302	206	537
Hosdurg Taluk	500	457	568
Kasaragod Taluk	574	536	664
North Wynad Taluk	704	648	823
Taliparamba Taluk	601	516	735
Tellicherry Taluk	414	359	532

Source : Superintendent of

AND EMPLOYMENT

9.10

BY SECTORS OF INDUSTRY AND SEX (1961)

Persons	Secondary		Persons	Tertiary	
	Male	Female		Male	Female
5	6	7	8	9	10
385	432	269	313	362	194
115	125	100	385	418	332
102	106	93	324	358	243
50	61	26	246	291	151
116	139	76	284	345	189
172	206	100	414	435	368

Census Operations, Kerala.

IX. INDUSTRIES LABOUR

Table

TALUK-WISE OCCUPATIONAL DISTRIBUTION OF

Taluk/District	As cultivator	As Agri. labourer	In mining quarrying fore- stry, fishing, etc.	In household industry	In manufacture other than house- hold industry
Cannanore District	152971	110051	39864	40857	65351
Cannanore Taluk	15374	18878	5269	13303	35014
Hosdurg Taluk	23561	17525	5728	6154	3890
Kasaragod Taluk	30187	14555	10499	4654	4168
North Wynad Taluk	10648	9653	5709	9111	695
Talipa- ramba Taluk	41841	26849	4403	8114	4617
Tellicherry Taluk	31360	22591	8256	7721	16967

Source: Superintendent of

AND EMPLOYMENT

9.11

POPULATION OF CANNANORE DISTRICT-1961

In construction	In trade and commerce	In transport storage & communication	Other services	Total workers	Total non-workers
6456	37870	12445	163854	629719	1150575
2120	10258	4598	26217	131031	260605
750	4769	1070	30270	93717	147414
966	5949	1430	23752	96160	174855
224	1104	204	7774	36922	53278
1191	4851	1438	28290	121594	189129
1205	10939	3705	47551	150295	325294

IX. INDUSTRIES, LABOUR

Table

RURAL AGRICULTURAL WAGES (Daily Averages)

Category	Wages in Cannanore District			
	1963	1964	1965	1966
Carpenter	4.01	4.14	4.69	5.35
Mason	3.76	3.89	4.31	4.68
Field labour (Men)	2.92	3.13	3.44	4.05

Source : Bureau of Economics

AND EMPLOYMENT

9.12

IN CANNANORE DISTRICT AND KERALA STATE
(in rupees)

Wages in Kerala State			
1963	1964	1965	1966
3.85	4.19	4.80	5.34
3.97	4.18	4.73	5.26
2.46	2.64	3.02	3.40

and Statistics, Government of Kerala.



X. JOINT STOCK COMPANIES

The number of Private and Public Joint-Stock Companies according to industrial groups, their authorised and Paid up Capital for the last three years beginning from 1963-64 are furnished in this section.

X. JOINT STOCK

Table

JOINT-STOCK COMPANIES AT WORK AS

Sl. No.	Industrial Group	Private
		No. of companies
1	2	3
1.0.	Agriculture and allied activities	7
2.1.	Mining and quarrying	1
3.2.	Processing and manufacturing of food stuffs	8
4.3.	Processing and manufacture of Metals and Chemicals	2
5.4.	Processing and manufacture of others	7
6.5.	Construction and utilities	...
7.6.	Commerce, Trade and finance	21
8.7.	Transport Communication and Storage	2
9.8.	Community and Business Service	...
10.9.	Personal and other services	1
	Total	49

Source : District Statistical

COMPANIES

10.1

ON 31-3-1964 IN CANNANORE DISTRICT

Companies			Public Companies	
Authorised Capital (Rs.)	Paid up Capital (Rs.)	No. of companies	Authorised Capital (Rs.)	Paid up Capital (Rs.)
4	5	6	7	8
955000	371610	3	3050000	280010
150000	1000
3740000	575300	4	10500000	4643350
150000	61000	6	3200000	355851
3000000	611000	13	9825000	659944
...
3670000	983760	3	500000	222534
1600000	1000000
...
200000	190000
13465000	3794170	29	27075000	6161689

Officer, Ernakulam.

COMPANIES

10.2

ON 31-3-1965 IN CANNANORE DISTRICT

Companies		Public Companies		
Authorised Capital (Rs.)	Paid-up Capital (Rs.)	No. of companies	Authorised Capital (Rs.)	Paid-up capital
4	5	6	7	8
955000	383110	3	3050000	280010
150000	1000
3740000	620300	4	10500000	4646350
150000	61000	5	2700000	334349
3000000	612000	13	9825000	669944
...
3860000	988460	3	500000	222534
1600000	1000000
...
700000	235000
14155000	3900870	28	26575000	6153187

Officer, Ernakulam.

X. JOINT STOCK

Table

JOINT-STOCK COMPANIES AT WORK AS ON

Sl. No.	Industrial Group	No. of companies
1	2	3
0.	Agriculture and allied activities	7
1.	Mininig and quarrying	1
2.	Processing and manufacture of food stuffs	8
3.	Processing and manufacture of Metal and Chemicals	3
4.	Processing and manufacture of others	8
5.	Construction and utilities	...
6.	Commerce Trade and Finance	18
7.	Transport Commercial and storage	2
8.	Community and Business Services	...
9.	Personal and other services	2
	Total	49

Source: District Statistical

COMPANIES

10.3

31-3-1966 IN CANNANORE DISTRICT

Private Companies			Public Companies	
Authorised capital (Rs.)	Paid-up capital (Rs.)	No. of companies	Authorised capital (Rs.)	Paid-up capital (Rs.)
4	5	6	7	8
955000	390810	3	3050000	280010
150000	1000
3740000	853800	4	10500000	4646350
170000	73150	5	2700000	334349
5500000	720000	13	9825000	683054
...
3720000	1066350	2	400000	188132
1600000	1000000
...
700000	235000
16535000	4340110	27	26475000	6131895

Officer, Ernakulam.

XI. LOCAL BODIES AND CO-OPERATIVE MOVEMENT

This portion gives information relating to Statistics on Local Bodies, N. E. S. Blocks and on Co-operative movement.

XI. LOCAL BODIES AND CO-OPERATIVE MOVEMENT

Table 11.1
(Rs. in lakhs)

Name of Municipality	Income During				Expenditure During					
	1962-63	1963-64	1964-65	1965-66	1966-67	1962-63	1963-64	1964-65	1965-66	1966-67
Cannanore	6.34	6.61	6.67	8.57	11.71	4.50	4.75	5.63	6.17	6.50
Tellicherry	10.28	9.14	10.59	11.58	13.43	9.09	10.84	10.60	11.54	10.69

Source: District Statistical Officer, Cannanore.

LOCAL BODIES AND

Table

N. E. S. BLOCKS IN CANNANORE

Sl. No.	Name of Block	Date of commencement	No. of Panchayat
1.	Mannanthody	1-10-60	7
2.	Kuthuparamba	1-10-53	20
3.	Tellicherry	1-4-55	8
4.	Cannanore	1-5-63	5
5.	Edakkad	2-10-57	8
6.	Taliparamba	1-10-54	12
7.	Payyannur	1-10-53	12
8.	Irrikur	1-4-57	7
9.	Nileswar	1-10-55	8
10.	Kanhangad	1-10-61	9
11.	Kasaragod	1-4-62	7
12.	Manjeswar	2-10-53	12

CO-OPERATIVE MOVEMENT

11.2

DISTRICT AS ON 31st March 1966

Area in		Population 1961 Census	Density per	
Sq. miles	Sq. K.m.		Sq. mile	Sq. K.m.
288.43	747.03	90200	312.7	120.7
275.84	714.43	281854	1021.8	394.5
42.60	110.33	145000	3403.7	1314.2
19.11	49.50	91673	4797.1	1851.9
57.89	149.93	113937	1924.2	759.9
255.11	660.73	176830	693.2	267.6
203.45	526.94	167295	822.3	317.4
157.18	407.10	99000	629.8	243.1
171.62	444.50	112527	742.1	253.1
220.04	569.90	128557	584.2	225.5
160.13	414.74	128138	802.8	308.9
219.38	568.19	146066	665.8	257.0

XI. LOCAL BODIES AND CO-OPERATIVE MOVEMENT

Table 11.3

N. E. S. BLOCKS AND PANCHAYAT 1965-66

Sl. No.	Name of Block	Name of Taluk	Name of Panchayat	Area in Sq. K.M.	Population 1961 Census
1	2	3	4	5	6
1	Mananthoddy	North Wynad	1. Mananthoddy	74.44	18578
			2. Thirunelli	201.19	9580
			3. Thondernad	131.16	7422
			4. Edavaka	52.97	10946
			5. Panamaram	80.89	16640
			6. Thavinhal	141.85	13635
			7. Vellamunda	64.55	13080
			1. Triprangattoor	32.37	13783
			2. Kilayad	33.07	8052

XI. LOCAL BODIES AND CO-OPERATIVE MOVEMENT

Table 11.3 (Contd.)

1	2	3	4	5	6
			3. Peravoor	34.78	10178
			4. Mangattidam	48.92	15440
			5. Maloor	39.73	9902
			6. Kuthuparamba	16.83	17061
			7. Chittariparamba	36.42	11080
			8. Keezhur- Chavasserry	39.34	140.24
			9. Pattiam	27.92	12821
			10. Payam	37.27	12403
			11. Muzhakunnu	47.06	13695
			12. Panoor	8.55	8162
2	Kuthuparamba	Tellicherry			

XI. LOCAL BODIES AND CO-OPERATIVE MOVEMENT

Table 11.3 (Contd.)

1	2	3	4	5	6
			13. Aralam	37.58	19036
			14. Mokeri	10.54	9875
			15. Pannyannur	10.08	11773
			16. Kappad	80.94	18725
			17. Kunnothuparamba	30.15	18401
			18. Mattannur	60.27	18980
			19. Chalot	69.15	21347
			20. Vengad	28.96	16412
3	Tellicherry	Tellicherry	1. Kottayam	8.81	8769
			2. Pinarayi	19.94	16923
			3. Chokli	13.21	19004

XI. LOCAL BODIES AND CO-OPERATIVE MOVEMENT

Table 11.3 (Contd.)

1	2	3	4	5	6
			4. Kairur	11.91	15941
			5. Eranjoli	13.99	15193
			6. Peringathur	20.72	18640
			7. Kodyeri	11.40	21584
			8. Dharmadam	10.36	16064
	Cannanore	Cannanore	1. Chirakkal	14.24	24094
			2. Puzhathi	9.06	5213
			3. Baliapattam	1.94	5471
			4. Azhicode	19.42	23891
			5. Pallikkunnu	6.89	16271

XI. LOCAL BODIES AND CO-OPERATIVE MOVEMENT

Table 11.3 (Contd.)

1	2	3	4	5	6
5	Edakkad	Cannanore	1. Edakkad 2. Peralassery 3. Anjerakandy 4. Chembilode 5. Muzhappilangad 6. Elayavoor 7. Chelora 8. Munderi	23.31 23.31 20.72 20.72 16.83 11.65 20.44 20.72	18316 15646 11571 14994 18394 16560 14966 15926
6	Taliparamba	Taliparamba	1. Cherukunnu 2. Pappinissery 3. Taliparamba	15.54 15.54 35.04	10944 16282 26039

XI. LOCAL BODIES AND CO-OPERATIVE MOVEMENT

Table 11.3 (Contd.)

1	2	3	4	5	6
			4. Andur	24.84	12687
			5. Thadikkadavu	163.66	22414
			6. Chengalayi	107.98	12023
			7. Narath	20.72	11812
			8. Kannanpuram	18.13	12030
			9. Kalliyasserry	25.90	13112
			10. Kurmathur	49.68	11269
			11. Naduvil	125.02	14953
			12. Pafiyaram	54.73	12265
7	Payyannur	Taliparamba	1. Cheruthazham	32.05	11520
			2. Payyanur	53.98	35295

XI. LOCAL BODIES AND CO-OPERATIVE MOVEMENT

Table 11.3 (Contd.)

1	2	3	4	5	6
3.	Kunhimangalam	15.54		15.54	9933
4.	Madayi	16.71		16.71	17266
5.	Ezhome	20.72		20.72	11232
6.	Ramanthali	29.78		29.78	11693
7.	Kankole-				
	Alapadamba	42.04		42.04	8629
8.	Eramam	74.62		74.62	12554
9.	Mathilil	128.46		128.46	12647
10.	Kadannapally	57.21		57.21	9919
11.	Karivellur	22.34		22.34	10966
12.	Peringom	155.40		155.40	19503

XI. LOCAL BODIES AND CO-OPERATIVE MOVEMENT

Table 11.3 (Contd.)

1	2	3	4	5	6
8	Irrikur	Taliparamba	1. Irrikur 2. Mayyil 3. Eruvassi 4. Padiyoor-	32.37 30.43 116.55	11089 13029 13684
			Kalliyad	128.85	18910
			5. Kuttiattoor	28.49	11028
			6. Kolacherry	20.72	10953
			7. Sreekandapuram	67.34	14267
9	Nileswar	Hosdurg	1. Cheruvathur 2. Padana 3. Kinanure	62.16 25.56 90.65	12789 11947 9899

XI. LOCAL BODIES AND CO-OPERATIVE MOVEMENT

Table 11.3 (Contd.)

1	2	3	4	5	6
			4. Eleri	139.86	16802
			5. Nileswar	25.90	20955
			6. Pilicode	72.52	11076
			7. Thrikaripore	32.37	17863
			8. Cheemeri	62.16	12237
10	Kanhangad	Hosdurg	1. Kanjangad	62.16	26305
			2. Ajannur	33.67	19119
			3. Udma	25.90	16807
			4. Pallikere	49.21	15024
			5. Panathady	141.36	12314
			6. Maloth	126.91	4926
			7. Belur	85.08	12198

XI. LOCAL BODIES AND CO-OPERATIVE MOVEMENT

Table 11.3 (Contd.)

1	2	3	4	5	6
11	Kasaragod	Kasaragod	8. Pullur-Periya 9 Madikai 1. Kasaragod 2. Delampaddy 3. Muliya 4. Chemnad 5. Karadka 6. Chengala 7. Badadka	62.99 50.50 16.83 49.86 34.32 39.94 41.28 53.74 150.82	11656 10218 27609 10770 10535 19115 9105 15542 18742
12	Manjeswar	Kasaragod	1. Madhur 2. Manjeswar 3. Bullur	40.43 24.29 46.62	18590 16121 5245

XI. LOCAL BODIES AND CO-OPERATIVE MOVEMENT

Table 11.4 (Contd.)

1	2.	3	4	5	6
	4. Puthige			36.26	8904
	5. Kambadege			37.55	7113
	6. Kumbala			39.91	18136
	7. Mangalappadi			36.26	16859
	8. Vokadi			45.51	10161
	9. Meenja			44.78	9360
	0. Enmakajae			78.35	16182
	1. Badidka			66.04	15820
	2. Paivelikai			72.18	16808

Source : Director of Panchayats, Kerala.



XI. LOCAL BODIES

Table

INCOME OF

Items
House tax
Service tax
Surcharge on building tax
Profession tax
Vehicle tax
Entertainment tax
Show tax
Income from markets
Land Cess
Licence fees
Miscellaneous receipt
Total (Rs. in lakhs)

Source: Director of

AND N. E. S. BLOCKS

11.4

PANCHAYATS

Cannanore		Kerala	
1963-64	1964-65	1963-64	1964-65
503357	828406	3998184	5902894
9087	43818	51241	194466
8	...	3665	2731
124564	163133	1334291	1891043
12662	15493	308758	440199
209594	183459	1122941	1059503
13707	15411	135050	155108
36213	38294	808709	934255
1330	349	164397	1314899
193411	192361	1099804	1190759
721948	649177	3436442	2621071
18.26	21.30	124.63	160.07

Panchayats, Kerala.

XI. LOCAL BODIES

Table

NUMBER AND MEMBERSHIP OF CO-OPERATIVE

Sl. No.	Type of Society
1	2
1	State Co-operative Bank
2	Central Co-operative bank
3	Primary Land mortgage bank
4	Central land mortgage banks
5(a)	Agricultural credit societies (large sized)
(b)	" " (small sized)
6	Non-Agricultural credit societies
7	Apex marketing societies
8	Central marketing societies
9	Primary marketing societies
10	Milk supplies union
11	Milk supplies societies
12	Ghee societies
13	Egg and poultry societies

AND CO-OPERATIVE MOVEMENT

11.5

SOCIETIES IN CANNANORE DISTRICT

As on 30-6-1965		As on 30-6-1966	
Number of Societies	Membership	Number of Societies	Membership
3	4	5	6
...
1	502	1	589
3	4267	3	5134
...
229	167213	230	133619
22	12974	22	12221
...
...
8	4929	9	6180
...
8	1611	13	1846
...
2	33	2	33

XI. LOCAL BODIES AND

Table

1	2
14 Other livestock societies	
15(a) Farming societies-Joint farming	
(b) „ Collective farming	
16 Irrigation societies	
17 Cotton ginning and pressing societies	
18 Wholesale stores	
19 Primary consumers co-operative societies	
20 Other Agricultural processing societies	
21 Housing societies	
22 Weavers societies	
23 Other industrial societies	
24 Fishermen Co-operative societies	
25(a) Other non credit societies-agricultural	
(b) do non-agricultural	
26 Supervising unions	
27 State co-operative union	
28 Regional co-operative union	
29 Harijan societies	
Total	

CO-OPERATIVE MOVEMENT

11.5 (Contd.)

3	4	5	6
...
12	458	11	441
...
2	161	2	174
...
1	1469	1	1807
38	15008	39	15675
...
14	711	14	762
...
2	91	2	215
...
6	553	6	675
62	23145	62	21945
6	424	6	424
...
...
41	2744	42	1410
458	236293	466	203150



XII. TRANSPORT AND COMMUNICATION

Statistics on the following topics are presented in this Section.

- i. Length of Roads**
- ii. Length of Railways**
- iii. Statement showing the number of vehicles put on road and tax collected during 1965-66**
- iv. Statement showing the number of motor vehicles registered**
- v. Number of posts and telegraph offices**

XII. TRANSPORT

Table

LENGTH OF ROADS-

Type of Roads	1963-64	
	P.W.D.	Others *
1	2	3
Cement or Concrete	3	...
Bituminous or Tarred	464	32
Waterbound Maccadam	522	29
Lower Type	202	124
Total	1191	185

* Includes roads under Forest Department,

** A portion of Lower type of Road is

NOTE: Roads maintained by Panchayat and
not been

Source: (1) Public Works Department

(3) Forest Department

AND COMMUNICATION

12.1

CANNANORE DISTRICT (Length in K. M.)

1964-65		1965-66	
P.W.D.	Others*	P.W.D.	Others*
4	5	6	7
2.82	...	3.00	...
475.56	42.59	626.00	60.00
482.20	11.82	518.00	30.00
174.61**	22.21**	192.00	142.00
1135.19	76.62	1339.00	232.00

Irrigation Department and Municipalities.
transferred to Panchayat Department.
Kerala State Electricity Board have
included.

- (2) Irrigation Department
(4) Municipalities

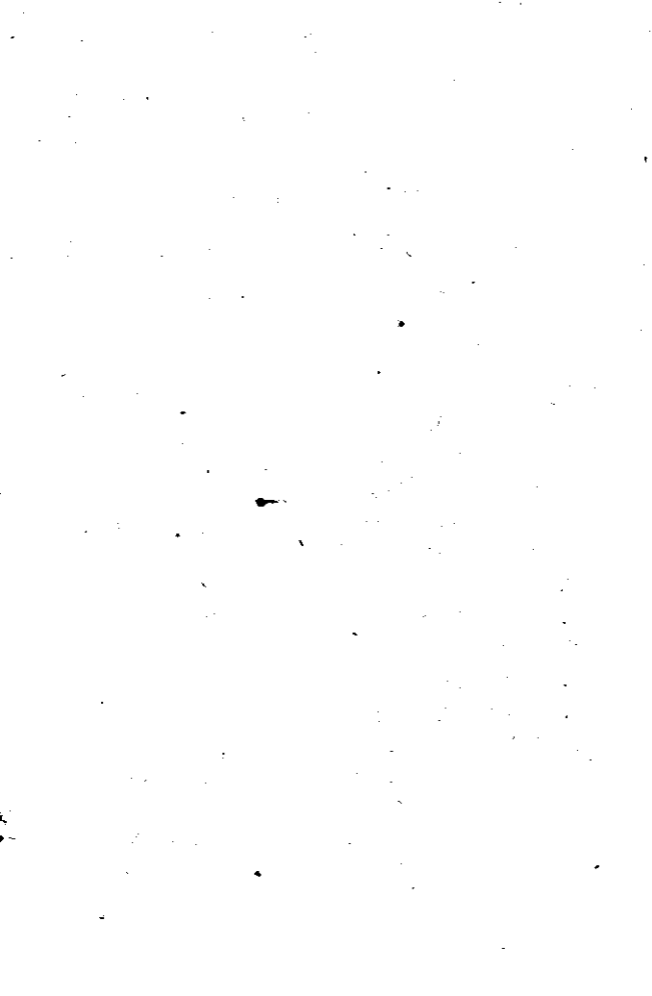
XII. TRANSPORT AND COMMUNICATION

Table 12.2

LENGTH OF RAILWAYS AS ON 1965-66

Type of Gauge	Kerala State (Length in Kilometres)	
	Cannanore District (Length in Kilometers)	3
1	2	3
Broad Gauge	137 K. m. *	553
Metre Gauge	Nil	335
Mixed Gauge	Nil	Nil
Total	137	888

Source : Census Hand Book.



XII. TRANSPORT AND

Table

THE NUMBER OF VEHICLES PUT ON ROAD

Sl. No.	Classification of Vehicles	No. as on 31-3-1965	
		Petrol	Diesel
1.	Goods Vehicles		
	a) Public Carriers	...	650
	b) Private Carriers	...	34
2.	Stage carriages	...	317
3.	Taxi Cabs	414	...
4.	Motor Cars	1254	...
5.	Motor Cycles	170	...
6.	Auto-Rickshaws	107	...
7.	Tractor-Trailers	...	56
8.	Others
	Total	1945	1057

Source : Director of Motor

COMMUNICATION

12.3

AND TAX COLLECTED DURING 1965-66

Total No. as on 31-3-1966 Total

	Petrol	Diesel	Total	Vehicle tax realised for the period from	
				1964-65 (Rs. in lakhs)	1965-66 (Rs. in lakhs)
	650	23	619	642	...
	34	...	56	56	...
	317	10	330	340	...
	414	370	...	370	...
	1254	1397	...	1397	...
	170	218	...	218	...
	107	127	...	127	...
	56	...	60	60	...

	2902	2145	1065	3210	29.41
					31.73

Vehicles Department, Kerala.

XII. TRANSPORT AND

Table

THE NUMBER OF MOTOR VEHICLES REGISTERED
AS ON

Sl. No.	Class of Vehicle	Cannanore District		
		No. as on 31-3-65	No. Newly registered	No. Cancelled
1	2	3	4	5
1.	Goods Vehicles	684	14	...
2.	Stage carriages	317	23	...
3.	Taxi cabs	414	12	56
4.	Cars	1254	143	...
5.	Motor Cycles	170	48	...
6.	Auto-rickshaws	107	20	...
7.	Tractor trailers	56	4	...
8.	Others
9.	Total	3002	264	56

Source : Director of Motor

COMMUNICATION

12.4

IN CANNANORE DISTRICT AND KERALA STATE
31-3-1966

Kerala State

No. as on 31-3-66	No. as on 31-3-65	No. Newly registered	No. can- celled	No. as on 31-3-1966
6	7	8	9	10
698	8803	847	802	8848
340	4609	475	714	4370
370	4046	641	569	4118
1397	20070	2533	2207	20396
218	4440	1245	454	5231
127	264	71	12	323
60	561	197	18	740
...	317	89	42	364
3210	43110	8086	818	44390

Vehicles Department, Kerala.

XII. TRANSPORT AND

Table

NUMBER OF POSTS AND TELEGRAPHS

 Details of Offices

1

-
- I. Number of Post Offices
 - i. Head Post Offices
 - ii. Dept. Sub. Post Offices
 - iii. Ex. Dept. Branch Offices
 - II. Number of Telegraph Offices
 - III. Number of Telephone Connection
 - IV. Number of Telephone Exchanges
 - V. Number of Public Call Offices
 - i. Trunk call offices
 - ii. Local call Offices
 - VI. Number of radio licence issued
-

Source: The Post Master General, Kerala
 *Calicut and Cannanore District were under
 Figures are

COMMUNICATION

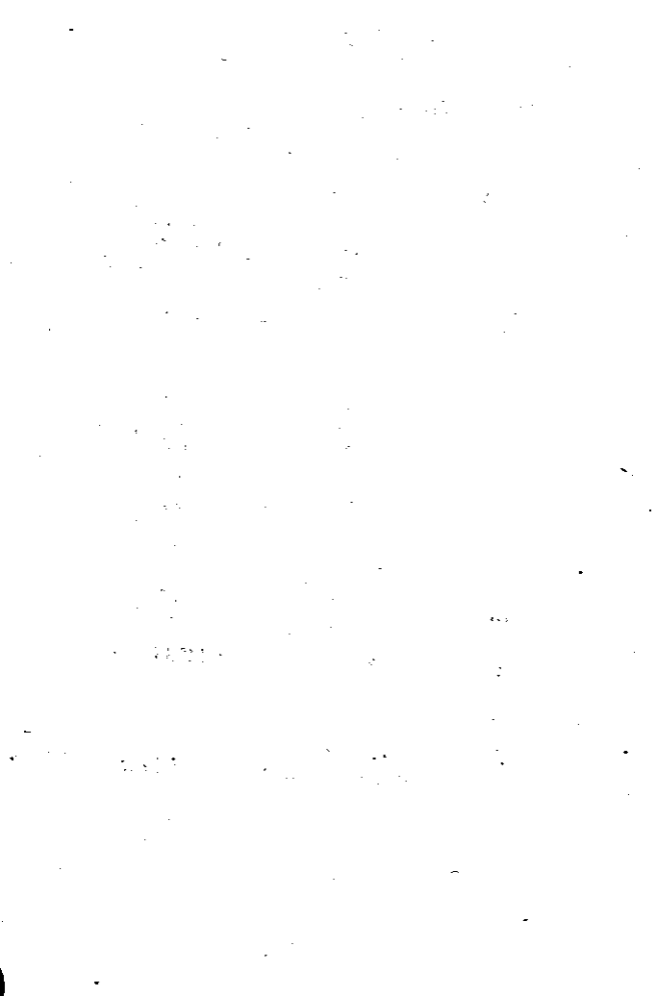
12.5

OFFICES IN CANNANORE DISTRICT

1960-61	1964-65	1965-66
2	3	4
3*	2	2
99*	74	85
660*	335	340
142*	51	63
991	925	1491
7	8	11
...	44	61
17	54	61
5147	12061	14735

Circle, Trivandrum.

one Postal Division and hence only Divisional available.



XIII. LAW AND ORDER

This Section contains information relating to the Number of Crimes committed, Number of Police Stations and out posts, Number of Prohibition Offences, Value of Property stolen and recovered, Trend of cognizable crimes during last few years and the sanctioned strength of Civil Police. The data shown in the tables are self explanatory.

XIII.

Table

SERIOUS CRIMES IN CANNANORE

Crimes	Cannanore District				
	1960	1961	1962	1963	1964
1	2	3	4	5	6
Murder	21	31	28	28	28
Dacoity	4	1	1	...	2
Robbery	3	2	5	4	3
House breaking & theft	180	169	211	208	268
Cattle theft	8	17	14	8	17
Ordinary theft	176	218	366	222	275
Total	392	438	625	470	593

Source: Inspector General of

LAW AND ORDER

13.1

DISTRICT AND KERALA STATE

Kerala State						
1965	1960	1961	1962	1963	1964	1965
7	8	9	10	11	12	13
33	249	261	221	204	230	267
5	16	9	6	3	19	12
5	79	66	61	39	34	29
259	1912	2116	1826	1991	2162	2259
9	140	103	136	133	157	125
246	2515	2806	2879	2687	2802	2914
557	5011	5361	5129	5057	5404	5606

Police, Kerala.

XIII. LAW AND ORDER

Table 13.2

POLICE STATIONS AND OUT-POSTS IN CANNANORE DISTRICT

Year	No. of Police Stations	No. of Out Posts
1	2	3
1960	27	7
1961	28	5
1962	28	7
1963	29	6
1964	30	5
1965	30	5
1966	30	5

Source: District Superintendent of Police, Cannanore District.



XIII.

Table

NO. OF PROHIBITION OFFENCES IN CANNANORE

Year	No. of cases charged	Cannanore District			
		No. of persons charged		No. of persons convicted	
		Male	Female	Male	Female
1	2	3	4	5	6
1961	2796	2542	63	2215	62
1962	3097	3111	24	2387	14
1963	1563	1537	97	605	25
1964	1384	1392	63	414	17
1965	1446	1477	60	797	24

Source: Inspector General of

LAW AND ORDER

13.3

DISTRICT AND KERALA STATE

Kerata State				
No. of cases charged	No. of persons charged		No. of persons convicted	
	Male	Female	Male	Female
7	8	9	10	11
11855	11605	258	9660	245
12224	12200	254	9765	192
7852	7827	347	4199	158
7317	7203	394	3405	175
6672	6653	185	4175	99

Police, Kerala.

XIII. LAW AND ORDER

Table 13.4

PROPERTY STOLEN AND RECOVERED IN CANNANORE DISTRICT

Cannanore District

Year	Property lost in Rs.	Property recovered in Rs.	Percentage
1	2	3	4
1961	80850 00	47015 00	58.1
1962	122940.00	47830.00	30.7
1963	73091.00	25044.00	34.6
1964	70249.03	19746.40	28.11
1955	89660.00	25000.00	27.88

Source: Inspector General of Police.



XIII.

Table

TREND OF COGNIZABLE CRIMES IN

Cannanore District			
Year	Number	Variation	Percentage of variation
1	2	3	4
1960	1162
1961	1270	+108	+ 9.2
1962	1335	+ 65	+ 5.11
1963	1158	-177	-13.26
1964	1537	+379	+32.73
1965	1505	- 37	- 2.4

Source: Inspector General of

LAW AND ORDER

13.5

CANNANORE DISTRICT AND KERALA STATE

Kerala State		
Number	Variation	Percentage of variation
5	6	7
14070
14289	+219	+1.56
13053	-1236	-8.65
13120	+67	+0.51
13791	+671	+5.11
15383	+1227	+8.7

Police, Kerala.

XIII.

Table

SANCTIONED STRENGTH OF CIVIL

Year	Superintendent	Asst. Superintendent	Deputy Superintendent	Inspector	Sub Inspector	Serjent	Asst. Sub Inspector	Jamedars
1	2	3	4	5	6	7	8	9
1961	1	...	3	8	39	3	3	...
1962	1	...	3	8	39	3
1963	1	1	2	8	38	...	4	...
1964	1	1	2	9	39	4
1965	1	...	3	9	42	4
1966	1	1	2	9	37	3	4	...

* Revised

Source: Inspector General of

LAW AND ORDER

13.6

POLICE IN CANNANORE DISTRICT

Head Constables			Constables			Total
Foot	Water	Mounted	Foot	Water	Mounted	
10	11	12	13	14	15	16
88	672	817
94	692	840
96	731	881
97	742	895
116	823*	998*
100	759	916

figures

Police, Kerala.



XIV. REGISTRATION

The number of Registration Offices, the nature of documents presented, the number of documents registered, their value according to category and the book-wise details of registration, for the period 1965-66 in respect of Cannanore District as well as Kerala State are presented in this section.

XIV.

Table

**NO. OF SUB REGISTRY OFFICES, NO. OF DOCUMENTS
DOCUMENTS REGISTERED**

Name of District/ State	No. of Sub-registry offices	No. of documents presented	Nature of	
			Mortgages	Sales deeds
1	2	3	4	5
Cannanore District	23	63946	4976	11039
Kerala State	207	752632	192163	212202

Source: I. G. of

REGISTRATION

14.1

PRESENTED AND REGISTERED AND VALUE OF
DURING 1965-66

documents

Wills	Money Bonds	Other classes	No. of documents registered	Value of docu- ments regi- stered (Rs. in lakhs)
6	7	8	9	10
704	852	46375	62188	644.18
5564	15719	326984	747872	8501.37

Registration.

XIV.

Table

**BOOK-WAR DETAILS OF REGISTRATION
AND KERALA**

Name of District/ State	No. of Sub registry offices	Book I	Book III
1	2	3	4
Cannanore District	23	56622	704
Kerala State	207	713181	5602

Source: Inspector General of

REGISTRATION

14.2

DURING 1965-66 IN CANNANORE DISTRICT
STATE

 Book IV Total Compulsory Optional Total

5

6

7

8

9

4862

62188

53450

8738

62188

29089

747872

643221

104651

747872

 Registration.

XIV.

Table

REGISTERED DOCUMENTS ACCORDING

		Cannanore District	
Sl. No.	Category of Documents	Number	Value (Rs. in lakhs)
1	2	3	4
1.	Mortgages	4976	106.96
2.	Sale deeds	11039	108.95
3.	Wills	704	...
4.	Money bonds	852	11.24
5.	Other Classes	44617	417.04
6.	Total	62188	644.18

Source: Inspector General of

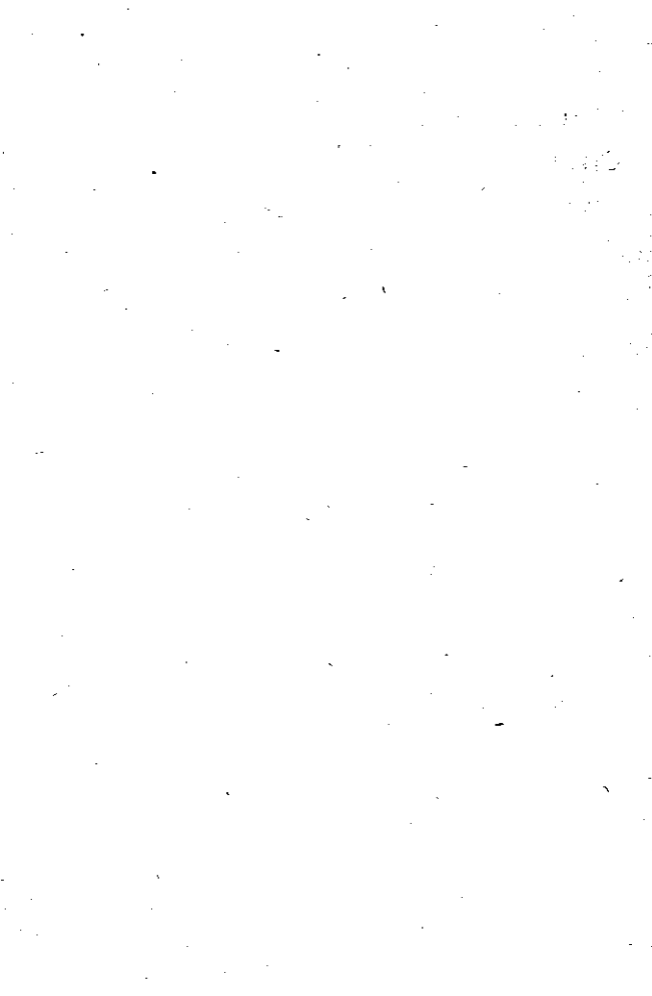
REGISTRATION

14.3

TO CATEGORY AND VALUE 1965-66

Kerala State	
Number	Value (Rs. in lakhs)
5	6
188437	2420.40
209494	2641.64
5564	...
15303	114.35
329074	3324.97
747872	8501.37

Registration.



XV. SALES TAX

This Section deals with :

- (i) Demand, Collection, Remission and Balance under General Sales tax (including surcharges).
- (ii) Demand, Collection, Remission and Balance under surcharge on General Sales tax.
- (iii) Demand, collection, Remission and Balance under Central Sales tax.
- (iv) Classification of assesseees according to the Grade of turn over assessed to Sales tax.
- (v) Number of assesseees and the agricultural income tax levied on the different classes of persons assessed to Agricultural income tax.
- (vi) Number of dealers registered under the General Sales Tax Act 1963.
- (vii) Analysis of Revenue under General Sales Tax.

XV. SALES

Table

DEMAND, COLLECTION, REMISSION AND BALANCE
FOR THE YEARS 1964-65 AND 1965-66 IN CANNANORE

District/ State	Demand			Collection	
	Arrear	Current	Total	Arrear	Current
1	2	3	4	5	6
Canna- nore	26.78	64.66	91.44	2.63	55.57
Kerala	303.53	1545.33	1948.86	57.41	1402.75

TAX

15.1

UNDER GENERAL SALES TAX (including surcharges)
 DISTRICT AND KERALA STATE (Rs. in lakhs)

1964-65

Remission			Balance			
Total	Arrear	Current	Total	Arrear	Current	Total
7	8	9	10	11	12	13
58.20	2.90	1.07	3.97	21.25	8.02	29.27
1460.16	55.17	20.65	75.82	190.95	121.92	312.87

Table 15.1

District/ State	Demand			Collection	
	Arrear	Current	Total	Arrear	Current
1	14	15	16	17	18
Canna- nore	29.35	75.70	105.05	3.33	61.94
Kerala	313.75	1790.21	1203.96	46.02	1595.08

Source: Board of

SALES TAX

(Contd.)

1965-66

Remission			Balance			
Total	Arrear	Current	Total	Arrear	Current	Total
19	20	21	22	23	24	25
65.27	5.30	1.21	6.51	20.72	12.55	33.27
1641.10	49.63	29.61	79.24	218.10	165.52	383.62

Revenue (Taxes), Kerala.

XV.

Table

**DEMAND, COLLECTION, REMISSION AND BALANCE
FOR THE YEAR**

District/ State	Demand			Collection	
	Arrear	Current	Total	Arrear	Current
1	2	3	4	5	6
Cannanore	107310	240048	347358	8271	206906
Kerala	1375307	6879121	8254428	284748	5869541

SALES TAX

15.2

UNDER SURCHARGE ON GENERAL SALES TAX

1964-65 & 1965-66

(Amount in Rupees)

1964-65						
Remission			Balance			
Total	Arrear	Current	Total	Arrear	Current	Total
7	8	9	10	11	12	13
215177	8248	1182	9430	90792	31960	122752
6154289	307826	147127	454953	782733	862453	1645186

XV.
Table

District/ State	Demand			Collection	
	Arrear	Current	Total	Arrear	Current
1	14	15	16	71	18
Canna- nore	131636	299191	430827	18173	231653
Kerala	1655533	7809712	9466345	301694	6705105

Source: Board of

SALES TAX

15.2 (Contd.)

1965-66						
Remission			Balance			
Total	Arrear	Current	Total	Arrear	Current	Total
19	20	21	22	23	24	25
249826	22109	4872	26981	91354	62667	154021
7006799	328800	204732	533532	1026139	899875	1926014

Revenue (Taxes), Kerala.

XV.

Table

DEMAND, COLLECTION, REMISSION AND BALANCE
FOR THE YEAR

District/ State	Demand			Collection	
	Arrear	Current	Total	Arrear	Current
1	2	3	4	5	6
Cannanore	194924	727960	922884	11528	667644
Kerala	5322688	20373447	25696135	419655	17555857

SALES TAX

15.3

UNDER CENTRAL SALES TAX

1964-65 AND 1965-66

(Amount in Rupees)

1964-65						
Remission			Balance			
Total	Arrear	Current	Total	Arrear	Current	Total
7	8	9	10	11	12	13
679172	4574	163	4737	178823	60152	238975
17975512	927290	179789	1107079	3975744	2637801	6613545

XV.
Table

District State	Demand			Collection	
	Arrear	Current	Total	Arrear	Current
1	14	15	16	17	18
Cannanore	238975	924628	1163603	31880	700506
Kerala	6544162*	22627928	29172090	304544	20494712

* Revised
Source: Board of

SALES TAX

15.3 (Contd.)

1965-66						
Remission			Balance			
Total	Arrear	Current	Total	Arrear	Current	Total
19	20	21	22	23	24	25
732386	37204	2270	39474	169892	221853	391745
20799256	1285855	129544	1415399	4953763	2003672	6957435

Revenue (Taxes) Kerala.

Table

CLASSIFICATION OF ASSESSEES ACCORDING TO
DURING THE YEAR

Grade of turn over	No. of Assessee in	
	1	2
Below Rs. 10000		1011
Between Rs. 10000 and 15000	15000	948
" 15001 and 20000	20000	290
" 20001 and 30000	30000	219
" 30001 and 40000	40000	156
" 40001 and 50000	50000	105
" 50001 and 60000	60000	75
" 60001 and 70000	70000	89
" 70001 and 80000	80000	58
" 80001 and 90000	90000	39
" 90001 and 100000	100000	40
" 100001 and 200000	200000	75
" 200001 and 300000	300000	42
" 300001 and 400000	400000	24
" 400001 and 500000	500000	15
" 500001 and 600000	600000	17
" 600001 and 700000	700000	10
" 700001 and 800000	800000	14
" 800001 and 900000	900000	11
" 900001 and 1000000	1000000	16
Above Rs. 1000000		37
Total :		3585

Source : Board of

SALES TAX

15.4

THE GRADE OF TURNOVER ASSESSED TO SALES TAX
1964-65 AND 1965-66

Cannanore during No. of assesseees in Kerala during

1965-66	1964-65	1965-66
3	4	5
686	10753	8774
727	6961	7722
530	3970	5082
393	3030	4006
214	1605	1878
176	1271	1424
111	1020	1009
88	812	827
61	607	665
49	507	620
55	463	694
111	1388	1443
71	726	873
55	430	518
21	272	310
19	186	243
25	140	185
23	117	143
25	111	119
38	126	155
47	512	489
3525	35007	37179

Revenue (Taxes), Kerala.

Table

NUMBER OF ASSESSEES AND THE AGRICULTURAL
PERSONS ASSESSED TO AGRICULTURAL INCOME TAX

Classes	Cannanore District		
	1964-65		1965-66
	No. of assesseees	Tax levied Rs.	No. of assesseees
1	2	3	4
Individual	1092	848672	2066
Companies	18	25773	27
Registered firms
Unregistered firm
Hindu undivided family	429	653271	784
Tenants in common	27	54459	39
Marumakkathayam tarward, Namboodiry family, etc.	63	47668	3
Total	1629	1629843	2919

Source : Board of

SALES TAX

15.5

INCOME TAX LEVIED ON THE DIFFERENT CLASSES OF
DURING THE YEAR 1964-65 AND 1965-66

Kerala State				
1964-65		1965-66		
Tax levied Rs.	No. of assessees	Tax levied Rs.	No. of assessees	Tax levied Rs.
5	6	7	8	9
71535	13173	6515592	17314	8081166
1267	215	14752213	275	8330408
...	59	160194	77	123389
...	4	...	6	34129
7012	1473	1545873	1965	1382863
742	315	498958	264	554608
...	466	212411	52	40189
80556	15705	23685241	19953	18546752

Revenue (Taxes), Kerala.

**NUMBER OF DEALERS REGISTERED UNDER
CANNANORE**

Year	Cannanore District				
	Total number	Number renewed	Number not renewed	No. of dealers registered during the year	No. of dealers whose registration has been cancelled or transferred during the year
1	2	3	4	5	6
1962-63	5087	4735	352	430	1055
1963-64	4462	4413	49	1066	258
1964-65	5270	4802	468	549	664
1965-66	5155	4833	322	540	321

Source: Board of

SALES TAX

15.6

THE GENERAL SALES TAX ACT 1963 IN
DISTRICT

Kerala State						
No. of registered dealers at the beginning of the year						
No. of registered dealers at the end of the year	Total number	Number renewed	Number not renewed	No. of dealers registered during the year	No. dealers whose registration has been cancelled or transferred during the year	No. of registered dealers at the end of the year
7	8	9	10	11	12	13
4462	45448	41944	3504	6118	4797	46769
5270	46769	42312	4457	10715	4527	52957
5155	52957	49004	3953	8796	4493	57260
5373	57260	50809	6451	7081	6843	57343

Revenue (Taxes), Kerala.

XV.

Table

ANALYSIS OF REVENUE UNDER GENERAL SALES
CANNANORE DISTRICT AND

Category	Cannanore
	1964-65
1	2
Sales Tax	5369.14
Surcharge	215.18
Registration fee	61.04
Licence fee	6.25
Miscellaneous	168.65
Total	5820.26

(+) Including branch fees.

Source : Board of

SALES TAX

15.7

TAX DURING THE YEAR 1964-65 AND 1965-66 IN
KERALA STATE (Rs. in thousands)

District	Kerala State	
	1964-65	1965-66
3	4	5
6011.47	136835.12.	154314.81
249.82	6154.29	7006.80
(+) 62.44	700.19	(+) 650.21
*0.30	182.52	*6.76
203.13	2144.27	2131.10
6527.16	146016.39	164109.68

(* No licence fee during 1965-66 (only permit fee).

Revenue (Taxes), Kerala.



XVI. EDUCATION

Statistics on education and literacy have been dealt with in detail in this Section.

XVI.

Table

TALUK-WISE LITERACY-

Sl. No.	Taluk/District	Total population	
		Male	Female
1	2	3	4
1	Cannanore District	874667	905627
2	Cannanore Taluk	192205	199431
3	Hosdurg „	118278	122853
4	Kasaragod „	134468	136547
5	North Wynad „	46729	43471
6	Taliparamba „	153704	157019
7	Telicherry „	229283	246306

Source: Superintendent of

EDUCATION

16.1 (a)

1961-CENSUS

Literates		Illiterates	
Male	Female	Male	Female
5	6	7	8
454489	280549	420178	625078
114689	76568	77516	122863
48129	23144	70149	99709
54286	27347	80182	109200
21712	11625	25017	31846
81226	45859	72478	111160
134447	96006	94836	150300

Census Operations, Kerala.

XVI.

Table

**POPULATION AND NUMBER OF LITERATES
DISTRICT AND**

Sl. No.	District/State	Population	
		Male	Female
1	2	3	4
1	Cannanore District	874667	905627
2	Kerala State	8361927	8541788

Source: Census of India

EDUCATION

16.1 (b)

AND EDUCATED PERSONS IN CANNANORE
KERALA STATE-1961

Literates & Educated persons			
Total	Male	Female	Total
5	6	7	8
1780294	454489	280549	735038
16903715	4596265	3322955	7919220

1961-papers No. 1 of 1962.

EDUCATIONAL INSTITUTIONS IN CANNANORE

Type of Institution	Cannanore District		
	Government	Private aided	Private unaided
1	2	3	4
High Schools	41	49	2
Training Schools	4	3	...
U. P. Schools :			
(1) Senior Basic	10	12	...
(2) Upper Primary	109	302	...
L. P. Schools :			
(1) Junior Basic	16	23	...
(2) Lower Primary	318	739	5
Total	498	1128	7

Source : Director of

EDUCATION

16.2

DISTRICT AND KERALA STATE 1965-66

Kerala State				
Total	Government	Private aided	Private unaided	Total
5	6	7	8	9
92	345	769	37	1151
7	31	74	...	105
22	22	49	...	71
411	739	1623	14	2376
39	174	193	...	367
1062	2730	3812	45	6587
1633	4041	6520	96	10657

Public Instructions, Kerala.

XVI.

Table

ENROLMENT IN CLASSES I TO XI BY SEX
1961-62, 1962-63

Classes	Cannanore			
	1961-62			
	Boy	Girls	Total	Boys
1	2	3	4	5
I to IV	117394	97659	215053	122650
V to VII	48056	33017	81073	49465
VIII to X	18824	9807	28631	21226

EDUCATION

16.3 (a)

IN CANNANORE DISTRICT AND KERALA STATE
AND 1963-64

District

1962-63		1963-64		
Girls	Total	Boys	Girls	Total
6	7	8	9	10
102397	225047	124170	103854	228024
34699	84164	51976	35510	87486
12210	33436	24479	13347	37826

XVI.
Table

Kerala				
Classes	1961-62			Boys
	Boys	Girls	Total	
1	11	12	13	14
I to IV	1117263	991986	2109249	1158212
V to VII	519863	412276	932139	527394
VIII to X	239065	177299	416164	281373

Source: Director of

EDUCATION

16.3 (a) (Contd.)

State				
1962-63			1963-64	
Girls	Total	Boys	Girls	Total
15	16	17	18	19
1025925	2184137	1198827	1072399	2271226
418772	946166	556716	435675	992391
209190	490563	318026	236793	554819

Public Instructions, Kerala.

XVI. EDUCATION

Table 16.3 (b)
 STANDARD-WISE STRENGTH BY SEX IN SCHOOLS OF CANNANORE DISTRICT
 AND KERALA STATE DURING 1964-65

Class	Cannanore District		Kerala State	
	Boys	Girls	Boys	Girls
1	2	3	4	5
I to IV	135936	114729	1289755	1133221
V to VII	51700	35731	556864	445425
VIII to X	26095	15239	327151	258185
Total	213731	165699	2173270	1836831

Source: Administration Report of Education Department.



XVI.

Table

STANDARD-WISE STRENGTH IN SCHOOLS-

Standard	Departmental		Private
	Boys	Girls	Boys
1	2	3	4
I	15301	12425	29969
II	12519	10042	25588
III	10688	6957	24131
IV	8056	5634	22793
Sub-Total	46564	35058	102481
V	5734	3442	18698
VI	6279	2843	12400
VII	4108	2454	10375
Sub-Total	16121	8739	41473
VIII	5364	3549	6623
IX	4265	2547	4791
X	2790	1383	3287
Sub-Total	12419	7479	14701
Grand Total	75104	51276	158655

Source : Director of Public

EDUCATION

16.3 (c)

CANNANORE DISTRICT - 1965-66

Aided	Private Unaided		Total		
	Girls	Boys	Girls	Boys	Girls
5	6	7	8	9	
26509	135	124	45405	39058	
22574	75	53	38182	32669	
20466	65	60	34884	27483	
19302	50	34	30899	24970	
88851	325	271	149370	124180	
13880	24	9	24456	17331	
8403	18679	11246	
7014	14483	9468	
29297	24	9	57618	38045	
4103	45	52	12032	7704	
2823	33	37	9089	5407	
1985	22	33	6099	3401	
8911	100	122	27220	16512	
127059	449	402	234208	178737	

Instructions, Kerala.

XVI.

Table

COLLEGES FOR

District/ State	No. of colleges including oriental title institutions		No. of University teaching departments		In Colleges (including oriental title institutions)	
	1964-65	1965-66	1964-65	1965-66		
1	2	3	4	5	6	7
Cannanore	5	7	2650	1043
Kerala	89	106	26	26	45940	26995

EDUCATION

16.4

GENERAL EDUCATION

Number of Students

1964-65

In University teaching departments			Total			Grand Total
Total	Boys	Girls	Total	Boys	Girls	
8	9	10	11	12	13	14
3693	2650	1043	3693
72935	340	180	520	46280	27175	73455

XVI.

Table 16.4

District/ State	In colleges (including oriental title institutions)			In University teaching departments	
	Boys	Girls	Total	Boys	Girls
1	15	16	17	18	19
Cannanore	4170	1608	5778
Kerala	64155	39060	103215	514	220

Source : University

EDUCATION

(Contd.)

1965-66			
	Total		Grand Total
Total	Boys	Girls	
20	21	22	23
...	4170	1608	5778
734	64669	39280	103949

of Kerala.

XVI.

Table

COLLEGES FOR

District/ State	Number of Institutions		
	1964-65	1965-66	Boys
1	2	3	4
Cannanore	1	1	75
Kerala	37	37	7978

Source: 1. University of Kerala.
 2. Physical Education Colleges
 and Co-operative College,

EDUCATION

16.4 (a)

PROFESSIONAL EDUCATION

Number of Students				
1964-65			1965-66	
Girls	Total	Boys	Girls	Total
5	6	7	8	9
39	114	84	35	119
2268	10246	9915	2905	12820

(Trivandrum & Kozhikode)

Trivandrum.

XVI.

Table

DISTRIBUTION OF TEACHERS IN SCHOOLS,

Type of School	Government			
	Trained		Untrained	
	Men	Women	Men	Women
1	2	3	4	5
I. High Schools:				
H. S. Section	456	138	96	26
U. P. „	253	96	62	32
L. P. „	41	24	7	5
Sub-Total	750	258	165	63
II. U. P. Senior Basic Schools:				
U. P./Senior Basic Section	409	160	16	26

EDUCATION

16.5

CANNANORE DISTRICT-1965-66

Private aided				Private unaided				Total
Trained		Untrained		Trained		Untrained		
Men	Women	Men	Women	Men	Women	Men	Women	
6	7	8	9	10	11	12	13	14
545	164	128	59	4	7	4	1	1828
293	177	61	42	1016
11	30	4	8	130
849	371	193	109	4	7	4	1	2774
1323	651	106	83	2774

XVI
Table

	1	2	3	4	5
L. P./Junior Basic					
Section	487	223	12	9	
Sub-Total :	896	383	28	35	
III. L. P., Junior Basic					
Schools:	1258	340	55	35	
IV. Training Schools:					
Training Section	24	14	2	...	
U. P./Senior Basic					
Section	9	4	
L. P./Junior Basic					
Section	10	6	
Sub-Total:	43	24	2	...	
Grand Total:	2947	1005	250	133	

Source: Director of

EDUCATION

16.5 (Contd.)

6	7	8	9	10	11	12	13	14
1223	636	39	36	2665
2546	1287	145	119	5439
3083	1240	67	59	11	5	...	2	6155
11	5	...	1	57
...	13
...	16
11	5	...	1	86
6489	2903	405	288	15	12	4	3	14454

Public Instructions, Kerala.

**NUMBER OF HINDI, MALAYALAM, TAMIL,
CANNANORE DISTRICT**

Language and Section		Government			
		Trained		Untrained	
		Men	Women	Men	Women
1		2	3	4	5
Hindi Teachers	H. S. Section	52	14	16	5
	U. P. Section	43	33	30	44
Malayalam Teachers	H. S. Section	51	8	27	13
	U. P. Section	8	4	6	9
Kannada Teachers	H. S. Section	11	...	1	...
	U. P. Section	1	...	1	...
Urdu Teachers	H. S. & U. P. Section	1
Sanskrit Teachers	H. S. Section	2
	U. P. Section	3	...	5	...
Arabic Teachers	H. S. Section	6	...	3	...
	U. P. Section	13	8	10	14
	L. P. Section	20	6	18	7

Source : Director of

EDUCATION

16.6

SANSKRIT, ARABIC AND KANNADA TEACHERS
DURING 1965-66

Private				Total	Re- marks
Trained		Untrained			
Men	Women	Men	Women		
6	7	8	9	10	11
63	30	3	8	191	
90	81	77	121	519	
48	13	51	23	234	
25	9	30	4	95	
12	1	2	...	27	
2	...	1	...	5	
4	...	1	...		
4	...	3	...	9	
...	...	2	...	10	
2	...	3	...	14	
5	29	2	...	81	
8	21	5	...	80	

Public Instructions, Kerala.

XVI.

Table

NUMBER OF PUPILS BENEFITTED BY CARE

Standard	Government	
	Boys	Girls
1	2	3
I	11594	9825
II	9744	7936
III	8857	5583
IV	6668	4704
Total	36863	28048

Source : Administration

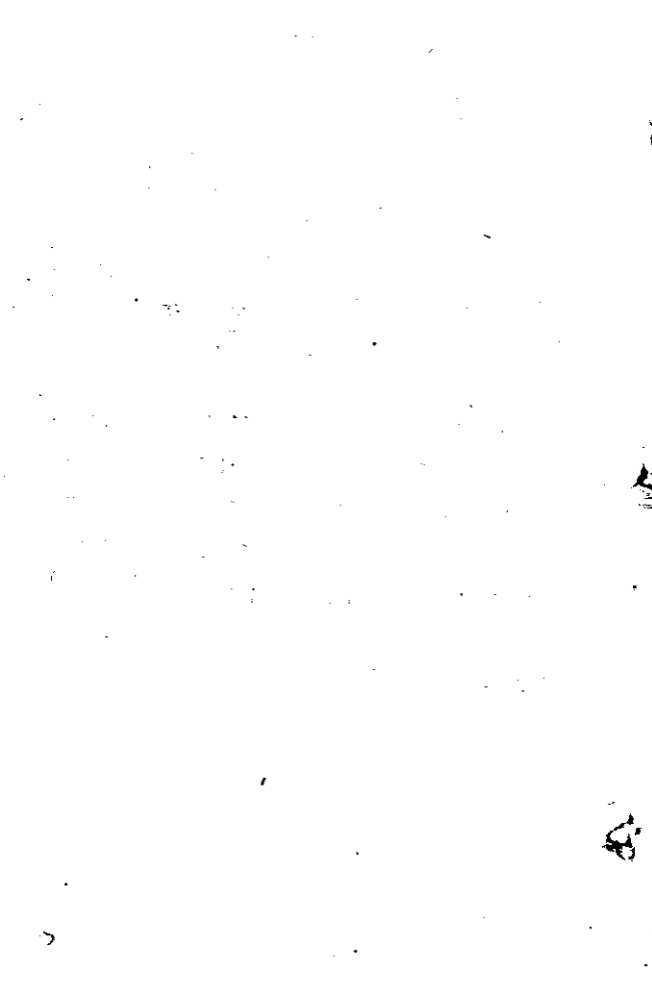
EDUCATION

16.7

FEEDING - CANNANORE DISTRICT - 1965-66

Private		Total		Grand
Boys	Girls	Boys	Girls	Total
4	5	6	7	8
24555	21353	36149	31178	67327
21004	18206	30748	26142	56890
21016	17441	29873	23024	52897
19724	16519	26392	21223	47615
86299	73519	123162	101567	224729

Report of Education Department.



XVII. PRICES

This section gives an idea of the month-wise cost of living index numbers of Cannanore from 1964 to 1966, and also the living index numbers from 1961 onwards of Kozhikode Centre (whole for Malabar area) as compared to be neighbouring centres of Trichur, Chalakudi and Ernakulam. In addition to this, Monthly average Retail Prices of Cannanore and Kasaragod for the years 1965 and 1966 and the monthly average wholesale prices in Cannanore, Kasaragod and Tellicherry centres are given. The source for this information is the Bureau of Economics and Statistics.

XVII.

Table

MONTHLY COST OF LIVING INDEX NUMBERS OF
(Base - Average prices from

Sl. No.	Period	1964
1	January	565
2	February	577
3	March	584
4	April	591
5	May	604
6	June	620
7	July	596
8	August	599
9	September	625
10	October	640
11	November	629
12	December	640

Note: No. index number is computed for
Source: Bureau of Economics and

PRICES

17.1

KOZHIKODE (whole of Malabar Arrea) CENTRE
 July 1935 to June 1936 = 100)

Kozhikode	
1965	1966
644	712
645	708
640	706
655	728
663	734
655	745
653	746
665	749
670	742
676	748
703	752
714	762

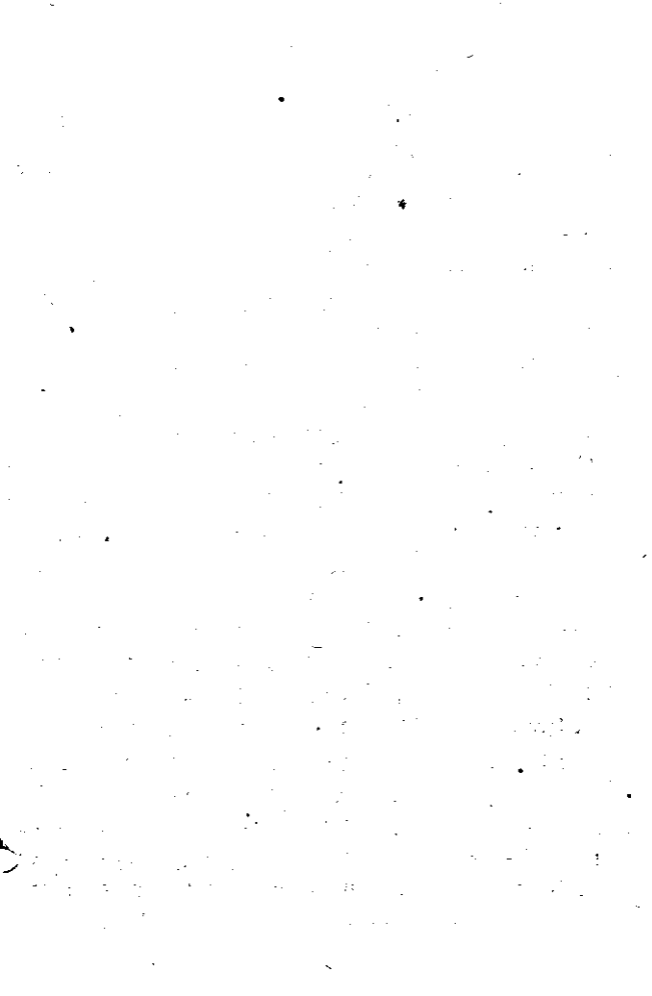
Cannanore District separately
 Statistics, Trivandrum.

XVII. PRICES

Table 17.2
 ANNUAL AVERAGE LIVING INDEX NUMBERS OF KOZHIKODE (whole for Malabar Area) CENTRE AND NEIGHBOURING PLACES. BASE: 1936 = 100

Centre	Annual average index numbers during					
	1961	1962	1963	1964	1965	1966
Kozhikode	501	512	529	606	665	736
Trichur	484	491	510	575	628	699
Chalakudy	489	489	507	580	629	686
Ernakulam	493	489	517	577	632	698

Note: No index number is computed for Cannanore District separately.
 Source: Bureau of Economics and Statistics, Trivandrum.



* MONTHLY AVERAGE-RETAIL PRICES-

Commodities	Unit	Janu- ary	Febru- ary	March	April	May
1	2	3	4	5	6	7
Rice	Kg.	0.75	0.68	0.68	0.68	0.69
Corriander	„	2.13	2.58	2.60	2.60	2.55
Chillies	„	2.79	2.63	2.65	2.64	2.51
Onions	„	0.44	0.40	0.33	0.31	0.30
Salt	„	0.10	0.10	0.10	0.10	0.10
Tamarind	„	1.00	1.00	1.00	1.04	1.32
Tapioca (Raw)	„	0.41	0.40	0.40	0.28	4.40
Greengram	„	1.26	1.23	1.20	1.20	1.15
Blackgram	„	0.98	1.04	1.04	1.04	0.99
Redgram	„	1.11	1.12	1.12	1.12	1.02
Dhall	„	1.66	1.75	1.65	1.44	1.34
Potatoes	„	0.80	0.76	0.73	0.71	0.80
Bringal	„	0.45	0.45	0.40	0.44	0.40
Ladies finger	„	0.90	0.91	0.56	0.57	0.53
Plantain	„	0.40	0.40	0.40	0.46	0.45

PRICES

17.3 (a)

IN CANNANORE CENTRE DURING 1965 (in Rs)

June	July	August	Sept- ember	October	Novem- ber	Decem- ber	Average for the year
8	9	10	11	12	13	14	15
0.69	0.69	0.69	0.69	0.69	0.71	0.72	0.70
2.56	2.56	2.56	2.56	2.50	3.17	3.20	2.68
2.50	2.74	3.13	3.10	3.00	3.88	3.80	2.95
0.31	0.35	0.35	0.35	0.36	0.49	0.50	0.37
0.10	0.10	0.10	0.10	0.10	0.10	0.10	0.10
1.45	1.50	1.55	1.60	1.82	1.93	2.08	1.44
0.40	0.40	0.40	0.40	0.36	0.35	0.40	0.40
1.09	1.09	1.30	1.03	1.03	1.13	1.13	1.14
0.94	0.94	0.94	0.94	0.94	1.04	1.04	0.99
0.91	0.98	0.91	0.91	0.86	0.96	1.00	1.00
1.25	1.25	1.25	1.25	1.28	1.40	1.40	1.41
0.80	0.75	0.75	0.75	0.73	0.70	0.72	0.75
0.40	0.40	0.40	0.40	0.40	0.56	0.64	0.45
0.40	0.50	0.55	0.55	0.58	0.93	1.06	0.68
0.45	0.45	0.45	0.45	0.45	0.44	0.40	0.44

1	2	3	4	5	6	7
Cucumber	"	0.20	0.20	0.20	0.20	0.20
Pumpkin	"	0.20	0.20	0.20	0.20	0.20
Chennai	"	0.25	0.23	0.25	0.28	0.48
Mutton	"	4.00	4.00	4.00	4.00	4.00
Beef	"	1.10	1.10	1.10	1.10	1.40
Milk (Cows)	Litre	1.10	1.10	1.10	1.10	1.10
Milk (Buffaloes)	"	1.46	1.46	1.46	1.46	1.46
Tea	Kg.	6.60	6.60	6.60	6.60	6.60
Coffee powder	"	5.80	5.80	5.80	5.80	5.55
Sugar	"	NA	NA	NA	NA	NA
Jaggery	"	0.90	0.85	0.80	0.82	0.80
Coconut oil	Litre	3.10	3.25	3.40	3.59	3.95
Gingelly oil	"	3.25	3.55	3.70	3.70	3.93
Kerosene	"	0.53	0.53	0.53	0.54	1.19
Firewood (unsplit)	Qntls	6.50	6.50	6.88	7.00	7.00
Betel leaves	100 Nos.	0.20	0.22	0.25	0.37	0.38
Arecanut (ripe)	"	2.75	2.75	2.75	4.00	4.00
Coconut (Husked)	"	26.80	28.75	29.00	35.00	43.75

Source: Bureau of Economics

PRICES

17.3 (a) (Contd.)

8	9	10	11	12	13	14	15
0.20	0.20	0.20	0.20	0.20	0.34	0.30	0.22
0.20	0.20	0.20	0.20	0.20	0.20	0.20	0.20
0.52	0.50	0.50	0.50	0.50	0.50	0.50	0.42
4.00	4.00	4.00	4.00	4.00	4.00	4.00	4.00
1.50	1.50	1.50	1.50	1.46	1.40	1.40	1.34
1.10	1.12	1.12	1.12	1.15	1.15	1.46	1.11
1.46	1.46	1.50	1.50	1.50	1.50	1.50	1.49
6.60	6.60	6.60	6.60	6.60	6.60	6.68	6.61
6.88	6.50	6.50	6.50	6.50	6.50	6.50	6.22
1.25	1.24	1.24	1.24	1.24	1.24	1.24	1.24
0.78	0.75	0.79	0.85	0.89	0.90	0.96	0.84
4.03	4.38	4.50	4.48	4.57	5.40	5.47	4.24
4.00	4.00	4.00	4.00	4.00	4.25	4.68	3.92
0.74	0.57	0.50	0.55	0.51	0.56	0.57	0.61
7.00	7.00	7.00	7.00	7.00	7.50	8.00	7.03
0.34	0.30	0.30	0.30	0.30	0.30	0.29	0.29
4.38	5.00	5.38	5.50	4.65	3.06	2.85	3.92
45.00	45.80	46.50	43.25	40.40	46.00	46.60	39.74

and Statistics, Kerala.

MONTHLY AVERAGE-RETAIL PRICES -IN

Commodities	Unit	Janu-	Febru-	March	April	May
		ary	ary			
Rice	Kg.	0.72	0.76	0.70	0.69	0.69
Corriander	„	2.76	2.24	2.53	2.42	2.35
Chillies	„	2.22	2.41	2.40	2.04	1.96
Onions	„	0.50	0.39	0.30	0.29	0.30
Salt	„	0.10	0.10	0.10	0.10	0.10
Tamarind	„	1.00	1.06	1.11	1.15	1.23
Tapioca (Raw)	„	NA	NA	NA	NA	NA
Greengram	„	1.01	1.10	1.16	1.16	1.11
Blackgram	„	0.90	0.90	0.90	0.90	0.91
Redgram	„	1.07	1.09	1.06	1.06	0.94
Dhall	„	1.25	1.31	1.33	1.25	1.18
Potatoes	„	1.24	0.99	0.80	0.80	0.81
Brinjal	„	0.30	0.30	0.27	0.25	0.35
Ladies finger	„	1.00	0.81	0.57	0.50	0.56
Plantain	„	0.40	0.40	0.40	0.40	0.40
Cucumber	„	0.19	0.16	0.16	0.16	0.19
Pumpkin	„	0.21	0.20	0.19	0.16	0.19

PRICES

17.3 (b)

KASARAGOD CENTRE DURING 1965 (in Rs.)

June	July	August	Sept- ember	October	Novem- ber	Decem- ber	Average for the year
0.69	0.69	0.69	0.69	0.69	0.70	0.72	0.70
2.39	2.29	2.68	2.75	2.65	3.11	3.15	2.62
2.02	2.00	2.13	2.18	2.02	2.66	3.00	2.25
0.30	0.32	0.35	0.35	0.35	0.45	0.44	0.36
0.10	0.10	0.10	0.10	0.10	0.10	0.10	0.10
1.30	1.49	1.65	1.91	1.78	1.85	1.99	1.46
NA	NA	NA	NA	NA	NA	NA	NA
1.13	1.16	1.19	1.20	1.13	1.13	1.16	1.14
0.90	0.90	0.90	0.91	0.90	0.95	1.00	0.91
0.98	1.01	1.10	1.10	1.10	1.10	1.12	1.06
1.16	1.15	1.15	1.22	1.25	1.20	1.20	1.22
0.89	0.80	0.75	0.65	0.65	0.73	0.80	0.83
0.46	0.45	0.52	0.38	0.45	0.78	0.60	0.43
0.64	0.68	0.50	0.32	0.59	0.98	1.10	0.69
0.40	0.40	0.40	0.40	0.40	0.44	0.40	0.44
0.20	0.20	0.23	0.17	0.18	0.28	0.31	0.20
0.20	0.20	0.23	0.20	0.18	0.28	0.30	0.21

Commodities	Unit	Janu- ary	Febru- ary	March	April	May
Chennai	Kg.	0.35	0.38	0.43	0.46	0.54
Mutton	"	4.00	4.00	4.00	4.00	4.00
Beef	"	NA	NA	NA	NA	NA
Milk (Cows)	Litre	1.05	1.05	1.05	1.05	1.05
Milk (Buffaloes)	"	1.16	1.10	1.10	1.10	1.10
Tea	Kg.	6.00	6.00	6.00	6.00	6.00
Coffee powder	"	7.45	7.63	7.80	7.80	7.80
Sugar	"	1.29	1.29	1.29	1.29	1.29
Jaggery	"	0.82	0.74	0.69	0.70	0.70
Coconut oil	Litre	3.21	3.23	3.41	3.79	4.11
Gingelly oil	"	3.65	3.65	3.73	3.80	4.08
Kerosene	"	0.50	0.50	0.50	0.51	0.50
Firewood (unsplit)	Quintls	6.50	6.50	6.50	6.50	6.50
Betel leaves	100 Nos.	0.16	0.18	0.21	0.20	0.19
Arecanut (ripe)	"	3.60	3.50	3.56	4.02	4.60
Coconut (Husked)	"	26.00	26.50	30.75	36.00	40.50

Source: Bureau of Economics

PRICES

17.3 (b) (Contd.)

June	July	August	Sept- ember	October	Nov- ember	Dece- mber	Average for the year
0.62	0.60	0.56	0.40	0.40	0.41	0.41	0.46
4.00	4.00	4.00	4.00	4.00	4.00	4.00	4.00
NA	NA	NA	NA	NA	NA	NA	NA
1.05	1.05	1.30	1.10	1.10	1.10	1.10	1.09
1.10	1.10	1.10	1.10	1.10	1.10	1.10	1.11
6.00	6.00	6.00	6.00	6.00	6.00	6.00	6.00
7.85	7.90	7.88	7.90	7.90	7.90	7.90	7.81
1.29	1.29	1.29	1.29	1.29	1.29	1.29	1.29
0.78	0.65	0.63	0.65	0.66	0.79	0.77	0.72
4.04	4.46	4.86	4.86	4.80	5.39	5.50	4.31
4.11	4.19	4.24	4.25	4.25	4.75	4.88	4.13
0.50	0.50	0.53	0.55	0.55	0.57	0.58	0.52
6.60	6.60	7.00	7.00	7.00	7.00	7.00	6.73
0.12	0.09	0.11	0.10	0.14	0.15	0.14	0.15
5.48	6.92	6.50	5.55	4.22	4.50	4.25	4.73
42.00	40.00	40.00	37.25	37.60	46.50	49.60	37.79

and Statistics, Kerala.

MONTHLY AVERAGE-RETAIL PRICES-IN CANNANORE CENTRE

Commodities	Unit	Janu-	Febru-	March	April	May
		ary	ary			
Rice	Kg.	0.72	0.72	0.72	0.76	0.76
Corriander	,	3.20	3.20	3.20	3.20	3.20
Chillies	„	4.35	4.36	4.38	4.11	4.26
Onions	„	0.45	0.37	0.43	0.48	0.44
Salt	„	0.10	0.10	0.10	0.10	0.10
Tapioca (Raw)	,	0.40	0.37	0.40	0.40	0.36
Greengram	„	1.13	1.13	1.13	1.40	1.49
Blackgram	„	1.04	1.04	1.04	1.17	1.27
Redgram	„	1.00	1.00	1.00	1.05	1.25
Dhall	„	1.37	1.31	1.29	1.29	1.29
Brinjal	„	0.70	0.63	0.50	0.48	0.53
Ladies finger	„	1.00	0.90	0.75	0.76	0.58
Plantain	„	0.40	0.40	0.46	0.45	0.53
Cucumber	„	0.37	0.30	0.30	0.35	0.35
Pumpkin	„	0.20	0.20	0.25	0.32	0.34

PRICES

17.3 (c)

IN CANNANORE DISTRICT DURING 1966 (in Rs.)

June	July	August	September	October	November	December	Average for the year
0.76	0.76	0.76	0.76	0.76	0.76	0.76	0.75
3.30	3.33	3.33	3.33	3.33	3.25	3.00	3.24
5.29	6.03	6.80	6.74	8.75	8.35	7.83	5.94
0.46	0.54	0.58	0.63	0.60	0.61	0.60	0.52
0.10	0.10	0.10	0.10	0.10	0.10	0.10	0.10
0.40	0.44	0.45	0.43	0.40	0.40	0.40	0.40
1.52	1.53	1.53	1.53	1.49	1.45	1.45	1.40
1.20	1.20	1.33	1.47	1.48	1.55	1.55	1.28
1.21	1.24	1.25	1.25	1.28	1.37	1.37	1.11
1.29	1.31	1.31	1.29	1.29	1.33	1.33	1.31
0.78	0.70	0.55	0.62	0.70	0.66	0.73	0.63
0.68	0.80	0.70	0.61	0.74	0.91	1.35	0.82
0.64	0.52	0.50	0.50	0.50	0.50	0.50	0.49
0.48	0.59	0.60	0.60	0.58	0.49	0.49	0.46
0.40	0.45	0.45	0.42	0.35	0.35	0.35	0.34

Commodities	Unit	Janu- ary	Febru- ary	March	April	May
Chennai	Kg.	0.50	0.45	0.40	0.50	0.63
Mutton	"	4.00	4.50	4.00	4.00	4.25
Beef	"	1.40	1.40	1.40	1.40	1.45
Milk (Cows)	Litre	1.15	1.15	1.10	1.15	1.25
" (Buffaloes)	"	1.50	1.50	1.50	1.62	1.65
Tea	Kg.	6.90	6.90	6.90	6.90	6.90
Coffee powder	"	6.50	6.50	6.50	6.50	6.50
Sugar	"	1.24	1.33	1.39	1.43	1.43
Jaggery	"	0.89	0.85	0.85	0.97	1.00
Coconut oil	Litre	5.43	5.23	4.65	4.66	4.63
Gingelly oil	"	4.65	4.65	4.65	4.65	4.65
Kerosene	"	0.58	0.57	0.56	0.56	0.56
Tobacco (ordinary)	Kg.	6.00	6.00	6.00	6.00	6.00
Betel leaves	100 Nos	0.28	0.24	0.28	0.31	0.35
Areca nut (Ripe)	"	2.75	2.88	2.88	3.42	3.75

Source: Bureau of Economics

PRICES

17.3 (c) (Contd.)

June	July	August	September	October	November	December	Average for the year
0.66	0.58	0.51	0.42	0.41	0.41	0.44	0.49
4.50	4.50	4.50	4.50	4.50	4.50	4.50	4.19
1.50	1.50	1.50	1.50	1.50	1.50	1.50	1.36
1.25	1.25	1.25	1.25	1.25	1.25	1.25	1.21
1.65	1.65	1.65	1.65	1.65	1.65	1.65	1.61
6.90	6.90	6.90	6.90	6.90	6.90	6.90	6.90
6.50	6.50	6.50	6.50	6.50	6.50	6.50	6.50
1.43	1.42	1.38	1.38	1.39	1.43	1.43	1.39
1.08	1.13	1.15	1.13	1.19	1.21	1.20	1.05
4.53	4.40	4.50	4.46	4.35	4.38	4.36	4.63
4.76	4.88	5.00	5.00	5.00	5.00	5.00	4.82
0.56	0.56	0.56	0.56	0.56	0.56	0.56	0.56
6.13	6.25	6.25	6.35	6.50	6.88	7.10	6.29
0.40	0.35	0.24	0.20	0.21	0.21	0.25	0.28
2.88	2.50	2.50	2.50	2.56	2.63	0.70	2.83

and Statistics, Kerala.

XVII.

Table

MONTHLY AVERAGE-RETAIL PRICES-
DISTRICT DURING

Commodities	Unit	Janu- ary	Febru- ary	March	April	May
Rice	Kg.	0.72	0.72	0.72	0.76	0.80
Corriander	"	2.96	2.81	2.81	2.96	3.15
Chillies	"	3.69	3.40	3.13	3.20	4.11
Onions	"	0.42	0.34	0.36	0.40	0.40
Salt	"	0.10	0.10	0.10	0.10	0.10
Tamarind	"	1.53	1.25	1.26	1.35	1.45
Tapioca (Raw)	"	NQ	NQ	NQ	NQ	NQ
Greengram	"	1.15	1.15	1.15	1.18	1.20
Blackgram	"	1.00	1.00	1.00	1.00	1.00
Redgram	"	1.14	1.15	1.18	1.18	1.20
Dhall	"	1.20	1.15	1.10	1.16	1.20
Potatoes	"	0.80	0.80	0.78	0.77	0.82
Brinjal	"	0.46	0.28	0.38	0.36	0.43
Ladies finger	"	0.79	0.69	0.64	0.59	0.60
Plantain	"	0.40	0.40	0.40	0.40	0.40
Cucumber	"	0.28	0.20	0.20	0.20	0.20
Pumpkin	"	0.29	0.20	0.20	0.23	0.29

PRICES

17-3 (d)

IN KASARAGOD CENTRE IN CANNANORE
1965 (in Rs.)

June	July	August	Sept- ember	October	Novem- ber	Decem- ber	Average for the year
0.76	0.76	0.76	0.76	0.76	0.76	1.02	0.78
3.30	3.21	3.18	3.16	3.15	3.15	3.08	3.08
4.39	5.25	6.08	6.19	6.38	4.94	5.25	4.67
0.43	0.50	0.60	0.60	0.60	0.57	0.52	0.48
0.10	0.10	0.10	0.10	0.10	0.10	0.10	0.10
1.45	1.45	1.45	1.45	1.41	1.45	1.44	1.41
NQ	NQ	NQ	NQ	NQ	NQ	NQ	NQ
1.27	1.30	1.30	1.27	1.28	1.29	1.33	1.24
1.00	1.03	1.09	1.09	1.23	1.40	1.40	1.10
1.21	1.27	1.44	1.40	1.30	1.32	1.33	1.26
1.20	1.20	1.20	1.20	1.20	1.20	1.20	1.18
0.94	0.97	0.81	0.80	0.81	1.15	1.30	0.90
0.45	0.53	0.56	0.43	0.60	0.63	0.51	0.47
0.66	0.77	0.55	0.46	0.68	0.80	1.03	0.69
0.40	0.40	0.40	0.40	0.40	0.40	0.40	0.40
0.23	0.26	0.30	0.21	0.16	0.28	0.32	0.24
0.35	0.30	0.30	0.23	0.20	0.25	0.30	0.26

XVII.
Table

Commodities	Unit	Janu-	Febru-	March	April	May
		ary	ary			
Chennai	Kg.	0.40	0.46	0.58	0.62	0.60
Muttom	"	4.00	4.00	4.00	4.40	4.00
Beaf	"	NQ	NQ	NQ	NQ	NQ
Milk	Litre	1.10	1.10	1.20	1.10	1.10
„ (Buffaloes)	"	1.10	1.10	1.20	1.30	1.30
Tea	Kg.	6.00	6.00	6.00	6.00	6.00
Coffee powder	"	7.90	8.25	8.30	8.78	9.00
Sugar	"	1.29	1.29	NQ	1.34	1.37
Jaggery	"	0.80	0.80	0.78	0.80	0.85
Coconut oil	Litre	5.40	5.20	4.71	4.88	4.91
Gingelly oil	"	5.00	4.96	4.75	4.93	5.00
Kerosene	"	0.58	0.58	0.58	0.58	0.58
Firewood						
(unsplit)	Qntl	7.00	7.00	7.00	7.00	7.00
Betel leaves	100 Nos	0.12	0.18	0.15	0.15	0.13
Areca nut (Ripe)	"	4.19	4.74	4.98	5.08	5.01
Coconut (Husked)	"	45.00	44.75	45.50	43.20	44.75

Source: Bureau of Economics

PRICES

17.3 (d) (Contd.)

June	July	August	Sept- ember	October	Nov- ember	Dece- mber	Average for the year
0.68	0.67	0.60	0.59	0.50	0.50	0.50	0.56
4.13	4.25	4.25	4.25	4.25	4.25	4.25	4.14
NQ	NQ	NQ	NQ	NQ	NQ	NQ	NQ
1.10	1.10	1.10	1.10	1.10	1.10	1.10	1.11
1.30	1.30	1.30	1.30	1.30	1.30	1.30	1.26
6.00	6.00	6.00	6.00	6.00	6.00	6.00	6.00
9.00	9.00	9.00	9.00	9.00	9.00	9.15	8.78
1.44	1.44	1.44	1.44	1.43	1.39	1.40	1.39
0.86	0.87	0.90	1.00	1.08	1.17	1.25	0.93
4.73	4.59	4.55	4.50	4.28	4.28	4.36	4.70
5.00	5.00	5.00	5.15	5.28	5.30	5.29	5.06
0.58	0.58	0.58	0.58	0.58	0.58	0.58	0.58
8.00	8.00	8.00	8.00	8.00	8.00	8.00	7.58
0.11	0.10	0.12	0.15	0.19	0.26	0.28	0.16
4.25	3.80	3.31	3.25	3.50	4.00	4.10	4.18
33.00	35.40	35.00	34.80	33.50	33.00	33.60	39.29

and Statistics, Kerala.

XVII.

Table

MONTHLY AVERAGE WHOLESALE PRICES

CANNANORE

Commodities	Unit	Janu- ary	Febru- ary	March	April	May
1	2	3	4	5	6	7
Coconut oil	Qntl	320.04	333.11	349 94	374.42	400.37
Copra	„	217.00	223.75	230.50	243.00	260.00
Coconut (with husk)						
	100 nos	25.60	26.75	27.00	33.80	39.00
Coconut oil cake	qntl.	67.26	71.00	77.00	73.12	70.65
Tea	„	638.00	638.00	638.00	638.00	638.00

KASARAGOD

Arecanut	100 Nos	3.39	3.30	3.33	3.75	4.30	
Coconut	with husk	„	25.60	24.50	28.75	33.40	37.25
	without husk	„	N Q	24.60	28.75	33.50	37.25

PRICES

17.4

IN CANNANORE DISTRICT DURING 1965 (in Rs.)

CENTRE

June	July	August	Sept- ember	October	Novem- ber	Decem- ber	Average for the year
8	9	10	11	12	13	14	15
406.35	441.00	453.00	447.30	457.38	530.90	515.30	419.09
275.13	310.00	320.00	315.00	320.20	357.50	440.00	284.24
40.00	41.20	43.00	40.75	38.40	46.50	44.60	37.22
69.00	70.80	69.50	70.00	66.00	72.00	71.60	70.66
638.00	638.00	638.00	638.00	638.00	638.00	446.40	622.03

CENTRE

5.13	6.40	6.00	4.94	3.70	4.00	3.75	4.33
38.00	37.00	35.00	33.50	34.20	42.50	45.60	34.61
38.00	37.00	35.00	33.50	34.20	42.50	45.60	35.44

XVII.

Table

TELLICHERRY

1	2	3	4	5	6	7
	Qntl.					
Black Pepper	Wynadan „	395.50	356.25	368.75	371.00	372.50
	Nadan „	384.00	347.50	362.50	365.00	365.00
	Ungarbled „	376.00	337.50	350.00	365.00	364.50
Banana Superior	100					
	Nos	10.70	10.25	9.88	10.60	11.38
	Medium „	8.70	8.50	8.88	9.20	10.50
Cashewnut (Nadan)						
	Qntl. N Q	N Q	95.00	95.80	88.75	

N. Q.

Source: Bureau of Economics

PRICES

17.4 (Contd.)

CENTRE

8	9	10	11	12	13	14	15
373.75	396.50	423.13	388.75	386.50	391.88	367.00	382.58
367.50	391.00	418.75	382.50	381.00	386.25	360.00	375.92
366.75	386.00	407.50	385.00	380.00	386.25	353.20	371.48
12.00	11.00	11.00	11.00	8.50	9.75	10.00	10.51
10.50	9.00	9.25	10.00	7.50	8.75	9.10	9.07
85.00	NQ	NQ	NQ	NQ	NQ	NQ	91.41

Not quoted

and Statistics, Kerala.

XVIII. MISCELLANEOUS

The section gives information on:-

- 1) Loan applications received, sanctioned and amount disbursed by the Kerala Financial Corporation as on 31-3-1966.
- 2) Small Savings collection in Cannanore District.
- 3) Number of Printing Presses, News Papers and Periodicals.
- 4) Reading Rooms and Libraries.
- 5) Receipts and disposal of applications under various schemes of social benefit in Cannanore District during 1964-65 and 1965-66.
- 6) Number of thandapers on 1st April, 1966.
- 7) Demand, Collection and Balance of various land taxes.
- 8) Number and amount of cheques cleared through the State Bank of India and Travancore 1964-65 and 1965-66.
- 9) Number and Tonnage of vessels.

XVIII. MISCELLANEOUS

Table. 18.1

LOAN APPLICATIONS RECEIVED, SANCTIONED AND AMOUNT DISBURSED BY
THE KERALA FINANCIAL CORPORATION AS ON 31-3-1965 FOR
CANNANORE DISTRICT

District	Kind of Fund	Applications received		Amount sanctioned		Amount disbursed	
		No.	Amount	No.	Amount	No.	Amount
Cannanore Corporation							
District	Fund	9	3110000	6	1615000	6	1535000
	Agency fund	19	778900	10	440500	10	334000

Source: Kerala Financial Corporation.

XVIII.

Table

SMALL SAVINGS COLLECTION

(Rs. in

Years	National Defence Certificate		Postal Certificate		Post Office Savings Bank	
	Gross	Net	Gross	Net	Gross	Net
1965	618	+70	9006	+1248
1966	600	98	10444	1136

Source: Directorate of

MISCELLANEOUS

18.2

IN CANNANORE DISTRICT

(thousands)

Defence Deposit certificate		15 years annuity certificate		Cumulative time deposit certificate	
Gross	Net	Gross	Net	Gross	Net
...	-17	...	-9	479	+139
...	-10	...	-12	928	692

National Savings.

XVIII. MISCELLANEOUS

Table 18.3

NO. OF PRINTING PRESSES, NEWSPAPERS AND
PERIODICALS IN CANNANORE DISTRICT

Year	No. of printing presses	No. of newspapers and periodicals
1962-63	44	8
1963-64	46	11
1964-65	61	19
1965-66	62	18

Source: Revenue Divisional Office, Cannanore.



XVIII.

Table

READING ROOMS AND LIBRARIES IN

Grade or Category		Grant for each library (in Rs.)
Grade	A1	1000
	A	600
	B1	550
	B	500
	C1	450
	C	400
	D1	375
	D	350
	E1	300
	E	250
	F1	225
	F	200
	G1	170
	G	140
	H1	120
	H	100
Without grant		...
Affiliated		...
Total		...

Source:

MISCELLANEOUS

18.4

CANNANORE DISTRICT AND KERALA STATE

No. in Cannanore District during 1964-65	No. in Kerala State during 1965-66	
...	...	11
1	1	11
...	...	14
...	...	22
...	...	35
3	3	54
...	...	68
4	4	83
1	2	156
9	9	261
17	19	394
18	19	381
42	47	321
42	52	261
30	52	207
15	24	70
106	75	408
19	15	86
307	322	2843

XVIII.

Table

RECEIPTS AND DISPOSAL OF APPLICATIONS
BENEFIT IN CANNANORE DISTRICT

Name of Scheme	1964-65		
	No. of appli- cations for disposal	No. sanctio- ned	No. reje- cted
Old age Pension Scheme	3356	1149	1593
Grant-in-aid to Physically handicapped	536	48	206
Pension to destitute widows	5153	715	1949
Financial assistance to T. B. Patients	1133	486	167

Source: Administration Report.

MISCELLANEOUS

18.5

UNDER VARIOUS SCHEMES OF SOCIAL
DURING 1964-65 AND 1965-66

Balance pending	No. of applications for disposal	1965-66		Balance pending
		No. sancti- oned	No. rejected	
614	1192	236	294	662
282	484	56	158	270
2489	4226	272	1280	2674
477	545	58	349	138

Land Revenue Department.

NUMBER OF THANDAPERS AS ON 1ST APRIL 1966

Sl. No.	Details of Thandapers	
1	2	
1.	No. of thandapers with extent upto 5 cents	
2.	...	5 cents to 10 cents
3.	...	10 ... to 50 ...
4.	...	50 ... to 1 Acre
5.	...	1 Acre to 2 Acres
6.	...	2 ... to 3 ...
7.	...	3 ... to 4 ...
8.	...	4 ... to 5 ...
9.	...	5 ... to 6 ...
10.	...	6 ... to 7 ...
11.	...	7 ... to 8 ...
12.	...	8 ... to 9 ...
13.	...	9 ... to 10 ...
14.	...	10 ... to 11 ...
15.	...	11 ... to 12 ...
16.	...	12 ... to 13 ...
17.	...	13 ... to 14 ...
18.	...	14 ... to 15 ...
19.	... Above 15 acres	
20.	...	Total

Source: Land Revenue

MISCELLANEOUS

18.6

IN CANNANORE DISTRICT AND KERALA STATE

No. of Thandapers as on 1st April 1966 in	
Cannanore District	Kerala State
3	4
4280	305585
6580	398402
38695	1041764
40397	667678
37943	578542
16682	184862
8670	102263
5214	72799
3658	39465
2421	28109
1886	20099
1590	15685
1292	12839
1014	10956
845	9234
737	6658
632	5847
605	5642
7291	36237
180432	3542666

Department, Kerala.

XVIII.

Table

DEMAND, COLLECTION AND BALANCE OF
AND KERALA

Cannanore District						
Item	1964-65		1965-66			
	Demand	Collection	Balance	Demand	Collection	Remission & write off
1	2	3	4	5	6	7
* Basic Tax	89.13	28.48	60.65	36.76	35.24	...
* Land Revenue other than basic tax	1.32	1.22	0.10	0.13	0.10	...
* Irrigation Revenue Plantation Addl. tax	0.04	0.04	...	0.15	0.12	...
Total	95.47	34.53	60.94	38.63	36.84	...

*Includes arrears

Source: Land Revenue

MISCELLANEOUS

18.7

VARIOUS LAND TAXES IN CANNANORE DISTRICT
STATE (Rs. in lakhs)

Kerala State							
1964-65			1965-66				
Balance	Demand	Collection	Balance	Demand	Collection	Remission & write Off	Balance
8	9	10	11	12	13	14	15
1.52	379.95	241.29	138.66	198.00	166.38	0.36	31.26
0.03	86.90	22.16	64.74	115.54	43.74	4.85	66.95
0.03	39.75	14.10	25.65	32.64	17.43	...	15.21
0.21	48.65	35.78	12.87	46.47	33.96	...	12.51
1.79	555.25	313.33	241.92	392.65	261.51	5.21	125.93

and Current.
Department.

XVIII.

Table

NUMBER AND AMOUNT OF CHEQUES CLEARED
 TRAVANCORE-1964-65 AND 1965-66

(Number in thousands)

Year	Cannanore			
	1st Quarter		2nd Quarter	
	No.	Amount	No.	Amount
1	2	3	4	5
1964-65	14	200	16	221
1965-66	16	244	16	242

MISCELLANEOUS

18.8

THROUGH THE STATE BANK OF INDIA AND
CANNANORE DISTRICT and KERALA

(Rs. in lakhs)

District					
3rd Quarter		4th Quarter		Total	
No.	Amount	No.	Amount	No.	Amount
6	7	8	9	10	11
18	228	18	243	66	892
17	258	18	277	66	1021

XVII.

Table

Year	Kerala			
	1st Quarter		2nd Quarter	
	No.	Amount	No.	Amount
1	12	13	14	15
1964-65	329	5939	354	5837
1965-66	372	7521	410	8840

Source: State Bank of

MISCELLANEOUS

18.8 (Contd.)

State

3rd Quarter		4th Quarter		Total	
No.	Amount	No.	Amount	No.	Amount
16	17	18	19	20	21
370	6700	389	7271	1442	25747
412	9828	400	9816	1594	36005

India and Travancore.

XVIII.

Table

NUMBER AND

Name of ports	1963-64	
	Number of vessels	Tonnage
1	2	3
Tellicherry	127	58308
Cannanore	87	8804
Azhikkal	320	26793
Kasaragod	71	3353
Total for Cannanore District	605	97258
Total for Kerala	2624	1414937
Percentage to the State	23.06	6.87

Source: Port Department,

MISCELLANEOUS

18.9

TONNAGE OF VESSELS

1964-65		1965-66	
Number of vessels	Tonnage	Number of vessels	Tonnage
4	5	6	7
108	53288	93	15564
108	11114	88	9671
310	27268	257	21459
67	2705	61	1715
593	94375	499	48409
2497	1340337	2413	1107466
23.75	7.04	20.68	4.37

Kerala State.

1142

PRINTED AT
S B PRESS
TRIVANDRUM