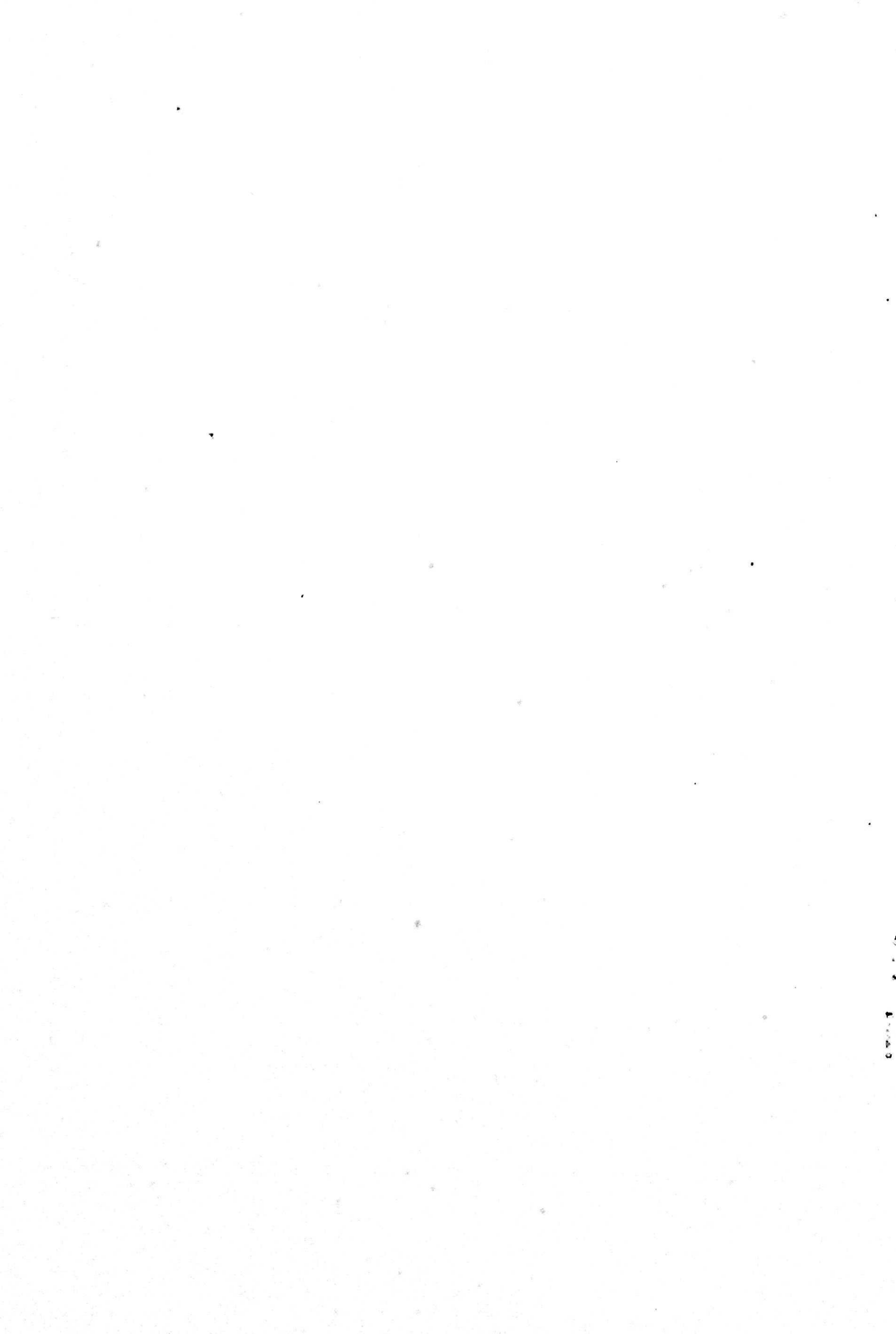
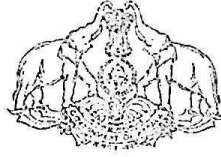


Government of Kerala

REPORT ON
ANNUAL SURVEY OF INDUSTRIES
2003-04 - KERALA

Department of Economics & Statistics
Thiruvananthapuram
2006





Government of Kerala

**REPORT ON
ANNUAL SURVEY OF INDUSTRIES
2003-04 - KERALA**

**DEPARTMENT OF ECONOMICS & STATISTICS
THIRUVANANTHAPURAM
2006**

CONTENTS

		Pages
Chapter - I	Introduction	1
Chapter - II	Concepts and Definitions	8
Chapter - III	Principal Characteristics by Major Industrial Activity	14
Chapter - IV	Contribution of Kerala	17
Chapter - V	Capital Employed, Input, Output and GVA at Industry	19
Annexure - I	National Industrial Classification	28
Annexure - II	ASI Data All India Level	32

ANNUAL SURVEY OF INDUSTRIES (ASI)

CHAPTER I

Introduction

The Annual Survey of Industries (ASI) is the principal source of industrial statistics in India. It provides statistical information to assess and evaluate, objectively and realistically, the changes in the growth, composition and structure of organised manufacturing sector comprising activities related to manufacturing processes, repair services, gas and water supply and cold storage. Industrial sector occupies an important position in the Indian economy and has a pivotal role to play in the rapid and balanced economic development. Viewed in this context the collection and dissemination of ASI data, on a regular basis, are of vital importance. The Survey is conducted annually under the statutory provisions of the Collection of Statistics Act 1953, and the Rules framed there-under in 1959, except in the State of Jammu & Kashmir where it is conducted under the State Collection of Statistics Act, 1961 and the rules framed there-under in 1964.

Historical Background

2. Understanding the importance of collection and compilation of data relating to industrial sector of the country, the Government of India, after 1930, launched a voluntary scheme for collection of detailed data from important industries in India. During the Second World War, in order to cater the specific requirement of war management, each government department created its own statistical sections. In 1942, Industrial Statistics Act was formed on the recommendation of the Royal Commission on Labour. A Directorate of Industrial Statistics (DIS) was formed in 1945 under Ministry of Commerce to administer the act. DIS started Census of Manufacturing Industries in 1946. After independence, Central Statistical Organization (CSO) was set up under Cabinet Secretariat by the Government of India in 1951 as an apex statistical body for coordinating the large variety of data collected by various agencies, which was

necessitated for adoption of planned economy by the government. In 1956, the Industrial Statistics Act 1942 was repealed with the passing of a more comprehensive Collection of Statistics Act 1953. Subsequently DIS was transferred to the Cabinet Secretariat in 1959 and was attached to Central Statistical Organization as Industrial Statistics Wing.

Census of Manufacturing Industries (CMI)

3. The Directorate of Industrial Statistics launched the CMI in 1946 with the objective of studying the structure of the Indian industry and estimating its contribution to national income. Because of practical difficulties, the CMI could cover only 29 of the 63 industry groups specified in the Industrial Statistics Act and extended only to 11 States of the Indian Union. It was conducted annually up to 1958. By 1958, the geographical coverage of the CMI extended to 13 States and 2 Union Territories (UT).

Sample Survey of Manufacturing Industries (SSMI)

4. Following the recommendation of the National Income Committee (1949), the Directorate of Industrial Statistics conducted the first SSMI in 1949 for collecting data from factories falling under the 34 industry groups left out by the CMI and defined under the Factories Act 1934. The technical work including the survey design, sample selection, and preparation of schedules was undertaken by the Directorate of Industrial Statistics while the tabulation and analysis of data, report writing, etc. was carried out by the Indian Statistical Institute, Calcutta. The SSMI was conducted annually up to 1958 by the then Directorate of National Sample Survey (now the NSS Organisation).

Annual Survey of Industries (ASI)

5. The Collection of Statistics (Central) Rules, 1959 framed under the 1953 Act provided for, among others, a comprehensive Annual Survey of Industries (ASI) in India. This survey replaced both the CMI and SSMI. The ASI was launched in 1960 with 1959 as the reference year and is continuing since then except for 1972. For ASI,

the Collection of Statistics Act 1953 and the rules framed there-under in 1959 provides the statutory basis. The ASI refers to the factories defined in accordance with the Factories Act 1948, and thus has a coverage wider than that of the CMI and SSMI put together.

Scope and Coverage

6. The ASI extends to the entire country except the States of Arunachal Pradesh, Mizoram, and Sikkim and Union Territory of Lakshadweep. It covers all factories registered under Sections 2m(i) and 2m(ii) of the Factories Act, 1948 i.e. those factories employing 10 or more workers using power; and those employing 20 or more workers without using power. The survey also covers bidi and cigar manufacturing establishments registered under the Bidi & Cigar Workers (Conditions of Employment) Act, 1966 with coverage as above. All electricity undertakings engaged in generation, transmission and distribution of electricity registered with the Central Electricity Authority (CEA) were covered under ASI irrespective of their employment size. Certain servicing units and activities like water supply, cold storage, repairing of motor vehicles and other consumer durables like watches etc. are covered under the Survey. Though servicing industries like motion picture production, personal services like laundry services, job dyeing, etc. are covered under the Survey but data are not tabulated, as these industries do not fall under the scope of industrial sector defined by the United Nations. Defence establishments, oil storage and distribution depots, restaurants, hotels, café and computer services and the technical training institutes, etc. are excluded from the purview of the Survey.

7. From ASI 1998-99, the electricity units registered with the CEA and the departmental units such as railway workshops, RTC workshops, Govt. Mints, sanitary, water supply, gas storage etc. are not covered, as there are alternative sources of their data compilation for the GDP estimates by the National Accounts Division of CSO.

ASI frame and its updation

8. The ASI frame is based on the lists of registered factories/units maintained by the Chief Inspector of Factories (CIF) in each State/UT and those maintained by licensing authorities in respect of bidi and cigar establishments and electricity undertakings. Regional offices of FOD (NSSO) maintain close liaison with CIF in updating the frame every year.

Sampling Design

9. The primary unit of enumeration in the survey is a factory in the case of manufacturing industries, a workshop in the case of repair services, an undertaking or a licensee in the case of electricity, gas & water supply undertakings and an establishment in the case of bidi & cigar industries. The owner of two or more establishments located in the same State and pertaining to the same industry group and belonging to same scheme (census or sample) is, however, permitted to furnish a single consolidated return. Such consolidated returns are common feature in the case of bidi and cigar establishments, electricity and certain public sector undertakings.

10. The ASI adopted from the beginning a very simple design. All units with 50 or more workers operating with power, and units having 100 or more workers operating without power were covered under the census sector. Also 12 States/UTs, namely, Himachal Pradesh, Jammu & Kashmir, Manipur, Meghalaya, Nagaland, Tripura and Pondicherry, A&N Islands, Chandigarh, Goa, Daman & Diu, D&N Haveli, which were industrially backward, were covered under the census sector to take complete stock of their manufacturing activities. Even the sample sector which comprised of units employing less than 50/100 workers (operating with or without power) in the major States were covered fully over a span of two years. This procedure continued till ASI 1986-87 by which time the total number of factories in the country grew enormously. Accordingly, the definition of the census sector was changed from ASI 1987-88 to the units having 100 or more workers irrespective of their operation with or without power. All the units in the frame of 12 less industrially developed States/UTs were surveyed on

complete enumeration basis. The rest of the universe was covered on sampling basis through an efficient sampling design adopting State X 3 digit industry group as stratum so as to cover all the units in a span of three years. This design continued till ASI 1996-97.

11. Before launching of ASI 1997-98 due to constraints of resources in covering a large number of units in the survey and generating the results of the survey in time bound manner, a review of the earlier design was made and a revised design was adopted in ASI 1997-98. The census sector was defined to include units having 200 or more workers and also some Significant Units were identified from the databases of ASI 1993-94 to ASI 1995-96, which although having less than 200 workers, contributed significantly to the Value of Output in these ASI years. The complete coverage of all Units in 12 less industrially developed States/UTs, namely, Goa, Himachal Pradesh, Jammu & Kashmir, Manipur, Meghalaya, Nagaland, Tripura, A&N Islands, Chandigarh UT, D&N Haveli, Daman & Diu and Pondicherry was continued. Also, all public sector undertakings (PSUs) were included in the census sector. The rest of the universe was covered in the Sample Sector by the usual formula of determination of sample size at a given value of the precision of the estimates with at least 99 per cent chance. This approach significantly reduced the sample size in ASI 1997-98 compared to that of ASI 1996-97 while maintaining a fair level of degree of precision for the estimates up to the State level. However, in 1997-98 a consensus decision has been taken so as not to attempt for the district level estimates. This design has been more or less continued in 2003-04 with the modification that the census sector was defined to include units having 100 or more workers instead of 200 or more workers and only 5 industrially backward States/UTs, namely, Manipur, Meghalaya, Nagaland, Tripura and A&N Islands were covered in census sector. The public sector undertakings were also covered in the general scheme i.e. units having 100 or more workers in census sector and rest in sample sector.

Industrial Classification

12. The Standard Industrial and Occupation Classification 1962 developed on the basis of the UN International Standard Industrial Classification (ISIC) of all Economic Activities 1958 (Rev. 1) was adopted from its first survey in 1960. With effect from ASI 1973-74, the National Industrial Classification (NIC) 1970 developed subsequently on the basis of UNISIC 1968(Rev.2) has been adopted. The NIC 1987 that strictly followed UNISIC 1968 was adopted from ASI 1989-90 to ASI 1997-98. The latest classification, i.e. NIC 1998, developed on the basis of UNISIC, 1990 (Rev. 3) has been adopted from ASI 1998-99.

Reference period & schedule of enquiry

13. Reference period for ASI is the accounting year of the industrial unit ending on any day during the fiscal year. Thus, in ASI 2003-04, the data collected from the respective industrial units relate to their accounting year ended on any day between 1st April 2003 and 31 March 2004.

Data for the ASI are collected through a comprehensive schedule. In the initial rounds, the schedule sought particulars relating to manufacturing activity only. Over the years, additions were made to meet the specific data requirements of various organizations. By 1973-74, the schedule consisted of five Parts: Part I on manufacturing, Part II on labour turnover, Part III on stocks & consumption of components and accessories in small scale sector, Part IV on construction expenditure and Part V on indirect taxes, sales, subsidies and capacity of power equipments installed. It was felt that the ASI schedule had become too unwieldy and complicated. So a modified schedule with three parts on manufacturing, labour and construction was adopted with effect from ASI 1974-75. Further modifications in the schedule were carried out in 1987-88, and again in 1997-98. Part III schedule relating to construction has been discontinued from 1998-99. The schedule for ASI 2003-04 also incorporated some minor changes.

Unit of enumeration

The primary unit of enumeration was the factory and primary data consists of returns submitted by the factories. In case of electrical light, power industry, the unit of enumeration was an undertaking (by an undertaking is meant an electricity department of state / union territory where such a department exists or an electric license or a sanction holder under the Indian Electricity Act engaged in the business of production supply of electricity)

Form of returns

The returns were submitted in the form prescribed for the purpose of Annual Survey of Industries under the collection of Statistics (Central) Rule 1959. As the data relating to a single factory cannot be published in view of restrictive class in the act safeguarding the interest of the owners, the industries in such case had been combined and data published for a group of industries.

State government participates in the survey programme in a scale to commensurate with their requirements. Our department has started collection of data under this scheme with effect from 2000 onwards. The State Level Coordination committee (SLCC) is the nodal agency, coordinating the fieldwork of ASI in our state. Principal Secretary to Industries, Government of Kerala is the Chairman of the SLCC. We are collecting the filled in schedules from all districts based on the residual sample of factories whose list is provide by the CSO (IS Wing)

Limitation

As the data relating to less than 3 units in an industry group cannot be published, the data in respect of such industrial units has been combined with the nearest subgroup of group keeping the nearness in the line of production, as far as possible. Also as the figures were rounded up to the nearest integer at various levels of aggregates during the course of tabulation, there might be slight variation in the total presented at higher level of aggregation and the sums of corresponding constituents shown in different tables

CHAPTER-II

CONCEPTS AND DEFINITIONS

1. **REFERENCE YEAR** for ASI 2003-2004 is the accounting year of the factory ending on 31st March 2004 while the survey was conducted in 2004-2005.

2. **FACTORY** is one, which is registered under sections 2m (i) and 2m (ii) of the Factory Act, 1948. The sections 2m (i) and 2m (ii) refer to any premises including the precincts thereof (a) whereon ten or more workers are working, or were working on any day of the preceding twelve months, and in any part of which a manufacturing process is being carried on with the aid of power, or is ordinarily so carried on or (b) whereon twenty or more workers are working or were working on any day of the preceding twelve months and in any part of which a manufacturing process is being carried on without the aid of power, or is ordinarily so carried on.

3. **FIXED CAPITAL** represents the depreciated value of fixed assets owned by the factory as on the closing day of the accounting year. Fixed assets are those that have a normal productive life of more than one year. Fixed capital includes land including lease- hold land, buildings, plant and machinery, furniture and fixtures, transport equipment, water system and roadways and other fixed assets such as hospitals, schools etc. used for the benefit of factory personnel.

4. **PHYSICAL WORKING CAPITAL** is the total inventories comprising of raw materials and components, fuels and lubricants, spares, stores and others, semi-finished goods and finished goods as on the closing day of the accounting year. However, it does not include the stock of the materials, fuels, stores etc. supplied by others to the factory for processing and finished goods processed by the factory from raw materials supplied by others.

5. **WORKING CAPITAL** is the sum total of the physical working capital as already defined above and the cash deposits in hand and at bank and the net balance receivable over amounts payable at the end of the accounting year. Working capital, however,

excludes unused overdraft facility, fixed deposits irrespective of duration, advances for acquisition of fixed assets, loans and advances by proprietors and partners irrespective of their purpose and duration, long-term loans including interest thereon and investments.

6. **PRODUCTIVE CAPITAL** is the total of fixed capital and working capital as defined above.

7. **INVESTED CAPITAL** is the total of fixed capital and physical working capital as defined above.

8. **GROSS VALUE OF PLANT AND MACHINERY** represents the total original (undepreciated) value of installed plant and machinery at the end of the accounting year. It includes the book value of the newly installed plants and machinery and the approximate value of rented in plants and machinery at the time of renting-in but excludes the value of rented-out plants and machinery. Total value of all the plants and machinery acquired on hire - purchase basis is also included.

9. **OUTSTANDING LOANS** represent all loans whether short term or long term, whether interest bearing or not, outstanding according to the books of the factory as on the closing day of the accounting year.

10. **RENT PAID** represents the amount of royalty paid in the nature of rent for the use of the fixed assets in the factory.

11. **INTEREST PAID** includes all interest paid on factory account on loans, whether short term or long term, irrespective of the duration and the nature of agency from which the loan was taken. Interest paid to partners and proprietors on capital or loan are excluded.

12. **RENT RECEIVED** represents the amount of royalty received in the nature of rent for the use of the fixed assets in the factory.

13. **INTEREST RECEIVED** includes all interest received on factory account on loans, whether short term or long term, irrespective of the duration and the nature of agency to which the loan was given. Interest received from partners and proprietors on capital or loan are excluded.

14. **WORKERS** are defined to include all persons employed directly or through any agency whether for wages or not and engaged in any manufacturing process or in cleaning any part of the machinery or premises used for manufacturing process or in any other kind of work incidental to or connected with the manufacturing process or the subject of the manufacturing process. Labour engaged in the repair and maintenance or production of fixed assets for factory's own use or labour employed for generating electricity or producing coal, gas etc. are included.

15. **EMPLOYEES** include all workers defined above and persons receiving wages and holding supervisory or managerial positions engaged in administrative office, store keeping section and welfare section, sales department as also those engaged in purchase of raw materials etc. or purchase of fixed assets for the factory and watch and ward staff.

16. **TOTAL PERSONS ENGAGED** include the employees as defined above and all working proprietors and their family members who are actively engaged in the work of the factory even without any pay and the unpaid members of the co-operative societies who worked in or for the factory in any direct and productive capacity.

The number of workers or employees is an average number obtained by dividing mandays worked by the number of days the factory had worked during the reference year.

17. **MANDAYS** represent the total number of days worked and the number of days paid for during the accounting year .It is obtained by summing-up the number of persons of specified categories attending in each shift over all the shifts worked on all days.

18. WAGES AND SALARIES are defined to include all remuneration in monetary terms and also payable more or less regularly in each pay period to workers as compensation for work done during the accounting year. It includes (a) direct wages and salary (i.e., basic wages/salaries, payment of overtime, dearness, compensatory, house rent and other allowances) (b) remuneration for the period not worked (i.e., basic wages, salaries and allowances payable for leave period, paid holiday, lay-off payments and compensation for unemployment, if not paid from sources other than employers) (c) bonus and ex-gratia payment paid both at regular and less frequent intervals (i.e., incentive bonuses, productive bonuses, profit sharing bonuses, festival or year-end bonuses etc.) It excludes lay off payments which are made from trust or other special funds set up exclusively for this purpose i.e., payments not made by the employer. It also excludes imputed value of benefits in kind, employer's contribution to old age benefits and other social security charges, direct expenditure on maternity benefits crèches and other group benefits Traveling and other expenditure incurred for business purposes and reimbursed by the employer are excluded. The wages are expressed in terms of gross value i.e., before deduction for fines, damages, taxes, provident fund, employee's state insurance contribution etc.

19. CONTRIBUTION TO PROVIDENT FUND AND OTHER FUNDS includes old age benefits like provident fund pension, gratuity etc. and employers contribution towards other social security charges such as employees state insurance, compensation for work injuries and occupational diseases, provident fund- linked insurance, retrenchment and lay off benefits.

20. WORKMEN AND STAFF WELFARE EXPENSES include group benefits like direct expenditure on maternity, crèches, canteen facilities, educational, cultural recreational facilities, and grants to trade unions, co-operative stores etc. meant for employees.

21. **TOTAL EMOLUMENTS** is defined as the sum of wages and salaries, employers contribution as provident fund and other funds and workmen and staff welfare expenses as defined above.

22. **FUELS CONSUMED** represents total purchase value of all items of fuels such as coal, liquefied petroleum gas, petrol, diesel, electricity, lubricants, water etc. consumed by the factory during the accounting year but excluding the items which directly enter into the manufacturing process.

23. **MATERIALS CONSUMED** represent the total delivered value of all items of raw materials, components, chemicals, packing materials and stores, which actually enter into the production process of the factory during the accounting year. It also includes the cost of all materials used for the construction of building etc. for the factories own use .It, however, excludes all intermediate products consumed during the accounting year. Intermediate products are those products, which are produced by the factory but are subject to further manufacturing.

24. **EX-FACTORY VALUE** of all products and by-products manufactured is attained at the rate of net sale-value (inclusive of subsidies etc.) with respect to each of the items.

25. **TOTAL INPUT** comprises total value of fuels, materials consumed as well as expenditures such as cost of contract and commission work done by others on materials supplied by the factory, cost of materials consumed for repair and maintenance work done by others to the factory's fixed assets, inward freight and transport charges, rate and taxes (excluding income tax), postage, telephone and telex expenses, insurance charges, banking charges, cost of printing and stationery and purchase value of goods sold in the same condition as purchased. Rent paid and interest paid is not included.

26. **TOTAL OUTPUT** comprises total ex-factory value of products and by-products manufactured as well as other receipts from non industrial services rendered to others, work done for others on material supplied by them, value of electricity produced and sold, sale value of goods sold in the same conditions purchased, addition in stock of

semi- finished goods and value of own construction. Rent received and interest received is not being included from ASI 2001-02.

27. **DEPRECIATION** is consumption of fixed capital due to wear and tear and obsolescence during the accounting year and is taken as provided by the factory owner or is estimated on the basis of cost of installation and working life of the fixed assets.

28. **NET VALUE ADDED** is arrived by deducting total input and depreciation from total output.

29. **COMPONENTS AND ACCESSORIES CONSUMED** are the portion of materials consumed and shown separately to represent as a special type of consumption.

30. **IMPORTED MATERIALS CONSUMED ON ACTUAL USE** comprise the portion of materials consumed that are imported from other countries. It may be raw materials or fuels or components and accessories of the input basket.

31. **SEMI-FINISHED GOODS** refer to the imputed value of all materials which have been partially processed by the factory but which are not usually sold without further processing. It includes the work in progress for materials supplied by others, but excludes the value of semi- finished fixed assets produced for factory's own use.

32 **FINISHED GOODS** of the factory are the ultimate products ready for sale. It does not require further processing but needs packaging and labeling etc.

Chapter III

Principal characteristics by major industrial activity

Principal Aggregates:- The distribution of some of the selected aggregates in absolute and percentage terms by the manufacturing and other industrial activity in Kerala covered by the Annual Survey of Industries (ASI) 2003 –2004 is given below

Table 3.1

Principal characteristics by major economic activity

Principal characteristics	Unit	Manufacturing	Others	All
Factories	Number	5314	178	5492
	(%)	97	3	100
Fixed Capital	Rs in Crores	6312	617	6929
	(%)	91	9	100
Invested Capital	Rs in Crores	10415	703	11118
	(%)	94	6	100
Workers	Number	269534	2899	272433
	(%)	99	1	100
Total Persons Engaged	Number	311823	4799	316622
	(%)	98	2	100
Wages to Workers	Rs in Crores	1915	34	1949
	(%)	98	2	100
Input	Rs in Crores	25624	1434	27058
	(%)	95	5	100
Gross Output	Rs in Crores	30238	1594	31832
	(%)	95	5	100
Depreciation	Rs in Crores	627	56	683
	(%)	92	8	100
Net Value Added	Rs in Crores	3987	104	4091
	(%)	97	3	100
Net Income	Rs in Crores	3439	57	3496
	(%)	98	2	100

It is observed from table no 3.1 that 5314 (97 %) factory units engaged in the manufacturing activities and 178 (3 %) units under other activities. The undertakings in the manufacturing sector accounted for 91 % of the total fixed capital during 2003-04, which is Rs 6312 crore in absolute figures. The percentage of fixed capital covered under others was just 9 %. All the other characteristics also had a very high percentage in manufacturing sector as compared to the rest of the units clubbed under other industries. The number of workers employed was of the order of 99 %. The gross output produced was valued at Rs. 30238 crore or 95 % during the year Contribution of the net value added by manufacture was Rs. 3987 crore or 97 %.

Following tables reveals certain important structural and technical coefficients, which are the basic structure of the contribution to economy.

Table 3.2

Structural ratios and Technical coefficients by major Economic Activity

Item	Unit	Manufacturing	Others	All
Fixed Capital per Factory	Rs in Lakhs	118.78	346.62	126.16
Gross Output per Factory	Rs in Lakhs	569.02	895.50	579.60
Net Value Added per Factory	Rs in Lakhs	75.02	58.42	74.49
Workers per Factory	Number	51	16	50
Persons Engaged per Factory	Number	59	27	58

The fixed capital utilized by each factory in case of all activities and that under manufacturing sector, which is also forms the major sector, works out to be Rs. 119 Lakh was recorded as 126 lakh, remaining factories clubbed together accounted for Rs. 347 lakh value of fixed capital per factory. The ratio of net value added per factory is Rs. 75 lakh in manufacturing sector, 58 lakh in other sectors and 75 lakh in the total of both the sectors. The ratio of gross output per factory is Rs. 596 lakh in manufacturing, Rs. 90 lakh in other sectors and Rs. 580 Lakh in the total of both the sectors. A worker per factory is 51 in manufacturing sector, 16 in other sectors and 50 in the total of both the sectors. A person engaged per factory in manufacturing sector is 59 and 27 in other sectors and 58 in both the sectors.

Item	Unit	Manu- facturing	Others	All
Fixed Capital per Persons Engaged	Rs in Lakhs	2.02	12.85	2.19
Gross Output per Persons Engaged	Rs in Lakhs	9.70	33.21	10.05
Net Value Added per Persons Engaged	Rs in Lakhs	1.28	2.17	1.29
Wages per Workers	Rs in Lakhs	0.71	1.17	0.72

The ratio of fixed capital per persons engaged are 2.19 lakh for all the sectors where as in the manufacturing sector it is 2.02 lakh and in other sectors it is 12.85 lakh. Gross output per persons engaged is 10.05 lakh for all the sectors whereas in the manufacturing sector it is 9.70 lakh and in other sectors it is 33.21 lakh. Wages per workers is 72 thousand rupees in the whole sector in the manufacturing sector it is 71 thousand and in other sectors it is 1.17 lakh.

Item	Manufacturing	Others	All
Fixed Capital to Net Value Added	1.58	5.93	1.69
Fixed Capital to Gross Output	0.21	0.38	0.22
Net Value Added to Gross Output	0.13	0.70	0.13

Ratio of fixed capital to net value added is 1.69 for all sectors and it is 1.58 for manufacturing sector and 5.93 for other sectors. Ratio of fixed capital to gross output is 0.22 for all sectors and it is 0.21 for manufacturing sector and 0.38 for other sectors. Ratio of net value added to gross output is same for manufacturing sector and all sectors i.e. 0.13 whereas it is 0.07 for other sectors.

Chapter IV

Contribution of Kerala

This chapter gives an idea about the contribution of our state in ASI sector. Out of 121815 factories in operation in India, 4948 factories are working in our state (4.06%). These factories together has a total stock of fixed capital worth rupees 692953 lakhs, which is 1.46% of fixed capital in India. Further these factories provide gainful employment to 256619 employees directly and 15820 employees through contractors. Other category of workers and staff engaged in these units come to 44183. About 895377 women working in this sector at all India level, 162337 are (18.14%) in Kerala. These sectors contribute 409114 lakhs by way of value added by manufacturing to the state income. But the figures relating to net fixed capital formation and gross fixed capital formation in Kerala is low comparing to all India level figures.

Major contribution of Kerala and India

	Characteristics	Kerala	India	Percentage
A.	No. Of Persons Engaged	316622	7870081	4.02
1	Workers	272433	6086908	4.48
1.1	Directly Employed	256616	4591237	5.59
	Men	94177	3695860	2.55
	Women	162441	895377	18.14
1.2	Employed Through Contractors	15820	1495671	1.06
2.	Employees Other Than Workers	42115	1716487	2.45
2.1	Supervisory and Managerial	21124	756943	2.79
2.2	Other Employees	20993	959544	2.19
3	Unpaid family members/proprietor etc.	2066	66687	3.10
B	Total Mandays Employed (in '000)	75634	2368602	3.19
C	Wages and Salaries Including Employers' Contribution (in lakhs)	194915	7245434	2.69
1.	Wages and Salary Including Bonus	157821	5833675	2.71
1.1	Wages and Salary	146135	5535699	2.64
1.1.1	Workers	95954	3047777	3.15

	Characteristics	Kerala	India	Percentage
1.1.2	Supervisory & Managerial	31690	1617871	1.96
1.1.3	Other Employees	18479	870051	2.12
1.2	Bonus to All Staff	11687	297975	3.92
2.	Employers' Contribution	37093	1411759	2.63
1.	Number Of Factories	5491	129074	4.25
2.	Factories In Operation	4948	121815	4.06
3.	Fixed Capital	692954	47333140	1.46
4.	Physical Working Capital	418902	20626713	2.03
5.	Working Capital	233152	11923101	1.96
6.	Invested Capital	1111852	67959853	1.64
7.	Gross Value Of Addition To Fixed Capital	76009	7735049	0.98
8.	Rent Paid For Fixed Assets	5959	416084	1.43
9.	Outstanding Loan	388364	28977564	1.34
10.	Interest Paid	53558	3397229	1.58
11.	Rent Received For Fixed Assets	1140	106548	1.07
12.	Interest Received	6681	260947	2.56
13.	Gross Value Of Plant & Machinery	853845	55380304	1.54
14.	Value Of Product And By-Product	2844757	113572196	2.50
15.	Total Output	3183185	128738002	2.47
16.	Fuels Consumed	179725	7371274	2.44
17.	Materials Consumed	2173355	79328515	2.74
18.	Total Inputs	2705787	103962377	2.60
19.	Gross Value Added	477401	24775625	1.93
20.	Depreciation	68287	4482349	1.52
21.	Net Value Added	409114	20293276	2.02
22.	Net Fixed Capital Formation	-11787	1271031	-0.93
23.	Gross Fixed Capital Formation	56500	5753380	0.98
24.	Addition in Stock of	27991	1665334	1.68
(a)	Materials, Fuels etc.	24360	1318873	1.85
(b)	Semi Finished Goods	-3270	130864	-2.50
(c)	Finished Goods	6901	215597	3.20
25.	Gross Capital Formation	84491	7418713	1.14
26.	Income	349601	16479964	2.12
27.	Profit	154686	9234531	1.68

Chapter V

Capital employed, Input, Output and GVA at Industry

Table gives an idea about the wages and salaries of the employees in industries. Wages per workers is 71,000 rupees per year in manufacturing sector and it is 72,000 in all industries sector coming under ASI.

National Industry Classification – 98 code wise details of wages, salaries, bonus and employees contribution paid to the workers in manufacturing sector and other sector is given in the following table – 1

Table 1:- Wages, Salaries and other monetary benefits of employees

NIC	Wages and salaries			Bonus to All Staff	Employers' Contribution
	Workers	Supervisory and Managerial Staff	Other Employees		
151	1290	664	396	194	617
152	1431	554	355	98	502
153	1286	337	378	130	421
154	17234	1455	1101	3331	2482
155	1805	896	214	206	450
160	4556	263	187	439	683
171	6458	996	679	647	2563
172	1878	362	377	445	477
173	89	22	29	18	30
181	901	85	70	73	283
191	35	10	2	3	6
192	183	713	130	66	102
201	491	102	40	67	62
202	1275	345	89	97	346
210	2434	1094	131	276	918
221	2846	1999	2899	496	2039
222	847	145	102	86	194
232	4120	3254	1487	195	4494
241	9718	4724	2114	1548	5228
242	4184	1796	1338	561	1882

NIC	Wages and salaries			Bonus to All Staff	Employers' Contribution
	Workers	Supervisory and Managerial Staff	Other Employees		
251	8516	2383	1158	796	2997
252	710	260	346	131	238
261	256	88	41	32	65
269	4764	1020	687	568	1460
271	1749	252	136	31	168
272	1268	703	118	100	856
273	432	90	71	7	280
281	375	181	102	18	148
289	766	296	100	96	271
291	409	274	29	14	175
292	1440	723	438	49	1262
293	16	6	1	2	14
300	176	179	65	9	155
311	1303	731	214	37	712
312	645	249	79	32	546
313	450	109	17	14	177
314	9	4	2	1	4
315	5	4	1	1	4
319	117	79	36	8	72
321	2311	1265	236	220	961
322	374	188	529	21	158
323	62	41	26	6	26
331	576	299	203	111	253
342	40	18	12	2	10
351	3696	1481	903	136	1498
359	435	211	204	9	165
361	422	108	60	22	99
369	46	15	19	6	8
Others	1525	617	528	232	532
Total	95954	31690	18479	11687	37093

Total output, value of products and by products etc

Industry wise output, value of products and byproducts, gross value of plant and machinery etc. are given in table 3. It is clear that the maximum output is from manufacturing of refined petroleum products. Manufacturing of food products and rubber products also have major contribution.

Table 3- Rent, Loan, Interest, Gross value of plant and machinery etc

NIC	Rent Paid For Fixed Assets	Outstanding Loan	Interest Paid	Rent Received For Fixed Assets	Interest Received	Gross Value Of Plant & Machinery	Value Of Product And By-Product	Total Output
151	849	18391	3595	15	849	11005	179396	187226
152	29	2225	436	23	6	2650	56460	59044
153	38	10181	1650	17	357	6962	69724	93981
154	465	23757	3884	166	97	12722	260740	281917
155	35	11002	1224	196	27	16999	31600	38923
160	34	309	70	1	1	0	20683	25177
171	90	39760	5768	44	384	56630	73960	79485
172	74	8815	885	17	193	5164	47177	49527
173	0	1298	23	0	0	1365	363	1014
181	69	946	157	0	0	1170	6032	6917
191	0	175	40	0	0	25	768	779
192	78	1770	1147	21	22	2288	31845	32386
201	47	833	188	2	1	11	7167	9738
202	72	11166	1823	5	64	8360	15923	17552
210	87	10927	1239	33	103	40319	43379	44331
221	309	10271	1167	64	124	26995	31047	62585
222	34	1882	278	11	27	2357	2196	10866
232	957	41195	4760	110	2191	238765	1100358	1112260
241	210	8262	4304	134	563	148551	184170	186231
242	221	13094	2472	45	256	23720	95602	104321
251	289	15604	2285	58	180	51691	234091	254307
252	57	3720	518	11	10	2625	14981	16620
261	8	1925	213	0	0	4341	3508	3574
269	488	20039	1127	28	180	28272	45942	46820
271	9	20241	1114	18	74	10902	67077	71718
272	7	354	177	1	351	20544	33690	34165
273	1	8152	83	0	6	2532	3174	3388
281	2	1314	126	9	3	669	1576	3284
289	149	3842	291	23	2	4393	14843	16105

Table 3- Continuation

NIC	Rent paid for Fixed Assets	Outstanding Loan	Interest Paid	Rent Received For Fixed Assets	Interest Received	Gross Value Of Plant & Machinery	Value Of Product And By-Product	Total Output
291	8	2991	58	12	5	1028	4513	4791
292	11	5908	674	5	14	3658	13049	14156
293	0	44	17	0	0	3	669	717
300	43	566	770	0	2	547	1970	2969
311	25	2201	627	6	4	2353	12754	13117
312	9	138	164	0	2	1692	4650	4758
313	2	1581	335	0	1	4905	2933	2959
314	1	290	1	0	0	177	105	107
315	0	47	11	0	0	36	256	261
319	3	1107	375	2	1	312	947	1600
321	145	4186	3155	3	36	21149	52577	64947
322	132	12496	1908	10	10	4360	10711	12440
323	0	117	10	0	0	2251	23	95
331	27	400	35	1	33	3316	7722	8867
342	3	75	19	0	0	111	1901	1927
351	65	8352	51	42	169	10248	3688	23863
359	10	2922	8	0	8	4154	4053	5053
361	61	1711	261	4	1	1314	3609	3924
369	5	1322	43	0	41	119	2558	3003
Others	701	50460	3992	3	283	60085	38597	159390
Total	5959	388364	53558	1140	6681	853845	2844757	3183185

Total Input, Gross value Added, Net Value Added, Depreciation etc

The following Table 4 gives an idea about the input, GVA, NVA and depreciation of different industries at NIC code level. This is also maximum in manufacturing of petroleum and petroleum products.

Table 4 – Fuels consumed, materials consumed, GVA, NVA etc

NIC	Fuels Consumed	Materials Consumed	Total Inputs	Gross Value Added	Depreciation	Net Value Added
151	3991	158699	171066	16160	2336	13824
152	1562	48158	53815	5229	623	4606
153	2595	60988	87834	6147	1314	4833
154	5325	199870	239473	42444	2855	39589
155	1501	25317	32519	6404	2218	4186
160	40	5507	15645	9532	47	9485
171	9378	46247	64804	14682	3989	10693
172	1221	33289	41123	8404	1667	6737
173	222	518	827	187	162	25
181	180	3664	4726	2191	178	2013
191	10	629	691	87	11	76
192	638	22021	28505	3880	512	3368
201	202	5822	8585	1153	113	1040
202	1214	10744	13810	3742	911	2831
210	10684	21071	35585	8746	1994	6752
221	1295	30345	41971	20614	3571	17043
222	198	2147	8684	2183	340	1843
232	48498	921742	982078	130182	14398	115784
241	33139	112851	154714	31517	7784	23733
242	5235	60509	79188	25133	2815	22318
251	13263	182270	213659	40649	4458	36191
252	769	10453	13985	2634	549	2085
261	1346	1488	3033	540	202	338
269	11882	15557	31702	15119	2220	12899
271	10314	50703	67083	4634	1004	3630
272	8131	21193	30988	3177	949	2228
273	1057	1756	2953	435	71	364
281	172	1306	2512	773	103	670
289	940	9935	12068	4037	484	3553
291	99	2553	3181	1611	83	1528
292	464	8656	10708	3448	325	3123
293	7	503	646	71	16	55
300	33	1320	2205	765	83	682
311	305	7790	9354	3764	138	3626
312	151	2813	3425	1333	162	1171
313	172	2249	2625	334	145	189
314	23	53	92	14	15	-1
315	3	149	205	56	17	39
319	34	724	1384	216	36	180
321	976	29306	43128	21819	1604	20215

NIC	Fuels Consumed	Materials Consumed	Total Inputs	Gross Value Added	Depreciation	Net Value Added
322	71	4600	10196	2245	609	1636
323	20	26	78	17	143	-126
331	210	4892	6566	2300	339	1961
342	36	1307	1711	215	25	190
351	1158	8611	14194	9669	588	9081
359	170	2933	3529	1526	261	1265
361	168	2258	2993	931	177	754
369	27	1826	2556	447	27	420
Others	596	25987	143385	16005	5616	10389
Total	179725	2173355	2705787	477401	68287	409114

Workers in Factories

The National Industrial Classification Code wise details of total factories, i.e., factories in operation, workers engaged directly, through contractors, supervising and managerial staff, other employees and unpaid family members and proprietors are shown in the table 5 below.

About 2.56 lakh workers are engaged directly, in these 4948 operating factories. There are about 21124 repairing and managerial staff in all these units. 2066 unpaid family members or proprietors are also attached in these units. There are 20993 other employees and 15820 workers engaged through contractors also included in these units. 7.56 crore of mandays are generated in all these units.

Participation of women workers

Women participation in industries is comparatively high in Kerala. It is seen that 256619 persons are directly employed in 4948 factories. Among these 162337 are women which comes to 63.26 % of total workers. The main contribution of women workers are from manufacturing of Tobacco products and other food products (NIC 160 and 154). About 1348 numbers (27.24 %) of factories are working in these two categories. Manufacturing of weaving apparel, spinning, weaving, sawmill etc (NIC 181,171,201,322,369 etc) also provide employment to women in comparatively high rate.

Table 5: Number of workers

NIC	Number of Factories		Persons engaged						Total	
	Total Factories	Factories in operation	Directly Employed			Through contractors	Supervisory and Managerial Staff	Other Employees		Unpaid family members and proprietors
			Men	Women	Children					
1	2	3	4	5	6	7	8	9	10	11
151	158	144	1633	1015	0	920	635	871	124	5198
152	47	44	1306	216	0	80	278	347	7	2234
153	123	102	2087	180	0	391	315	688	66	3727
154	642	555	10009	12116	0	1627	3478	3331	325	139886
155	38	34	1173	636	0	826	354	300	4	3293
160	802	793	8577	17549	54	1186	706	412	274	28758
171	225	185	9396	4989	0	139	933	1049	12	16518
172	186	172	3939	1583	0	666	507	791	36	7522
173	5	5	117	102	0	0	38	59	2	318
181	29	29	492	2810	0	0	107	207	3	3619
191	5	5	83	48	0	0	17	5	0	153
192	66	59	499	178	0	24	515	290	15	1521
201	384	324	1336	1469	50	81	311	145	243	3635
202	240	217	2877	713	0	89	487	223	86	4475
210	93	89	2196	506	0	323	485	249	23	3782
221	52	52	2794	47	0	10	640	1915	5	5411

NIC	Number of Factories		Persons engaged									
	Total Factories	Factories in operation	Directly Employed			Through contractors	Supervisory and Managerial Staff	Other Employees	Unpaid family members and proprietors	Total		
			Men	Women	Children							
1	2	3	4	5	6	7	8	9	10	11		
222	82	80	1048	209	0	107	146	173	21	1704		
232	13	13	1201	12	0	1036	703	456	0	3408		
241	73	64	4869	94	0	461	1414	1163	3	8004		
242	142	129	3931	1391	1	500	1168	1412	19	8422		
251	324	299	8381	995	0	1842	1668	1350	24	14260		
252	110	93	1037	229	0	139	234	380	12	2031		
261	4	4	572	27	0	0	86	52	3	740		
269	895	758	7723	3606	0	483	988	728	602	14130		
271	63	59	1328	53	0	1834	161	259	11	3646		
272	15	13	656	17	0	132	196	102	3	1106		
273	9	6	384	1	0	332	65	41	0	823		
281	51	48	630	44	0	106	158	154	10	1102		
289	101	95	1392	125	0	104	271	193	45	2130		
291	21	21	428	5	0	0	158	42	5	638		
292	64	59	1280	15	0	10	441	336	15	2097		
293	4	4	51	15	0	0	12	4	1	83		
300	4	3	210	75	0	14	169	89	1	558		

NIC	Number of Factories		Persons engaged							
	Total Factories	Factories in operation	Directly Employed			Through contractors	Supervisory and Managerial Staff	Other Employees	Unpaid family members and proprietors	Total
			Men	Women	Children					
1	2	3	4	5	6	7	8	9	10	11
311	16	12	1325	137	0	0	379	233	0	2074
312	34	33	996	267	0	3	209	149	7	1631
313	11	9	636	68	0	0	67	52	0	823
314	5	3	23	1	0	0	6	4	0	34
315	7	2	20	12	0	0	9	5	0	46
319	14	14	118	108	0	0	68	37	1	332
321	29	28	1548	895	0	799	696	273	2	4213
322	7	5	184	231	0	6	137	111	3	672
323	4	4	8	175	0	0	26	39	0	248
331	18	17	445	181	0	105	215	279	3	1228
342	12	12	92	11	0	9	28	36	3	179
351	10	10	1264	5	0	1111	435	433	2	3250
359	5	5	393	3	0	6	115	155	1	673
361	54	54	700	48	0	118	135	145	25	1171
369	18	18	102	115	0	0	23	64	13	317
Others	178	165	2688	10	0	201	732	1162	6	4799
Total	5492	4948	94177	162337	105	15820	21124	20993	2066	316622

ANNEXURE - 1**NATIONAL INDUSTRIAL CLASSIFICATION**

DIVISION 15: Manufacture of Food Products and Beverages	
151	Production, Processing and Preservation of Meat, Fish, Fruit Vegetables, Oils and Fats.
152	Manufacture of Dairy Product [Production of Raw Milk is Classified in Class 0121]
153	Manufacture of Grain Mill Products, Starches and Starch Products, and Prepared Animal Feeds
154	Manufacture of other Food Products
155	Manufacture of Beverages
DIVISION 16: Manufacture Of Tobacco Products	
160	Manufacture of Tobacco Products [Tobacco Related Products are also included While Preliminary Processing of Tobacco Leaves is Classified in Class 0111]
DIVISION: 17: Manufacture Of Textiles	
171	Spinning, Weaving and Finishing of Textiles.
172	Manufacture of Other Textiles
173	Manufacture of Knitted and Crocheted Fabrics and Articles
DIVISION: 18: Manufacture of Wearing Apparel; Dressing and Dyeing of Fur	
181	Manufacture of Wearing Apparel, Except Fur Apparel [This Class Includes Manufacture of Wearing Apparel made of material not made in the same Unit. Both Regular and Contract Activities are included]
182	Dressing and Dyeing of Fur; Manufacture of Articles of Fur
DIVISION 19: Tanning And Dressing of Leather Manufacture of Luggage, Handbags, Saddlery, Harness and Footwear	
191	Tanning and Dressing of Leather, Manufacture of Luggage Handbags, Saddlery & Harness.
192	Manufacture of Footwear.
DIVISION 20 : Manufacture of Wood and of Products of Wood and Cork, Except Furniture; Manufacture of Articles of Straw and Plating Materials	
201	Saw Milling and Planning of Wood
202	Manufacture of Products of Wood, Cork, Straw and Plaiting Materials
DIVISION: 21: Manufacture of Paper and Paper Products	
210	Manufacture of Paper and Paper Product

DIVISION 22: Publishing, Printing and Reproduction of Recorded Media	
221	Publishing [this group includes publishing whether or not connected with publishing. publishing involves financial, technical, artistic, legal and marketing activities, among others but not predominantly]
222	Printing And Service Activities Related To Printing
223	Reproduction of Recorded Media [This class includes Reproduction of Records, Audio, Video and Computer Tapes from Master Copies, Reproduction of Floppy, Hard or Compact Disks, Reproduction of Non-Customized Software and Film Duplicating]
DIVISION 23: Manufacture Of Coke, Refined Petroleum Products And Nuclear Fuel	
231	Manufacture of Coke Oven Products [This Class includes the Operation of Coke Ovens Chiefly for The Production of Coke or Semi-Coke From Hard Coal and Lignite, Retort Carbon and Residual Products Such as Coal Tar or Pitch. Agglomeration of Coke. Distillation of Coal Tar is Classified in Class 2411.]
232	Manufacture of Refined Petroleum Products
233	Processing of Nuclear Fuel [Includes Extraction of Uranium Metal From Pitchblende Or Other Uranium Bearing Ores; Manufacture of Alloys, Dispersions Or Mixtures of Natural Uranium Or Its Compounds; Manufacture of Enriched Uranium and its Compounds; Plutonium and its Compounds; Uranium Depleted in U 235 And Its Compounds; Other Radioactive Elements, Isotopes or Compounds; and, Non-Irradiated Fuel Elements for use in Nuclear Reactors]
DIVISION: 24: Manufacture of Chemicals and Chemical Products	
241	Manufacture of Basic Chemicals
242	Manufacture of Other Chemical Products
243	Manufacture of Man-Made Fibers [This Class Includes Manufacture Of Artificial Or Synthetic Filament And Non-Filament Fibers.]
DIVISION 25 : Manufacture Of Rubber And Plastic Products	
251	Manufacture of Rubber Products
252	Manufacture of Plastic Products
DIVISION 26: Manufacture of Other Non-Metallic Mineral Products	
261	Manufacture of Glass and Glass Products
269	Manufacture of Non-Metallic Mineral Products N.E.C.
DIVISION 27: Manufacture of Basic Metals	
271	Manufacture of Basic Iron & Steel
272	Manufacture of Basic Precious And Non-Ferrous Metals
273	Casting of Metals [This Group includes Casting Finished or Semi-Finished Products Producing a Variety of Goods, All characteristic of other activity classes]

DIVISION 28: Manufacture of Fabricated Metal Products, Except Machinery And Equipments

281	Manufacture Of Structural Metal Products, Tanks, Reservoirs And Steam Generators
289	Manufacture Of Other Fabricated Metal Products; Metal Working Service Activities

DIVISION 29: Manufacture Of Machinery And Equipment N.E.C

291	Manufacture Of General Purpose Machinery
292	Manufacture Of Special Purpose Machinery
293	Manufacture Of Domestic Appliances, NEC

DIVISION 30: Manufacture Of Office, Accounting And Computing Machinery

300	Manufacture Of Office, Accounting And Computing Machinery
-----	---

DIVISION 31: Manufacture Of Electrical Machinery And Apparatus N.E.C.

311	Manufacture Of Electric Motors, Generators And Transformers
312	Manufacture Of Electricity Distribution And Control Apparatus [Electrical Apparatus For Switching Or Protecting Electrical Circuits (E.G. Switches, Fuses, Voltage Limiters, Surge Suppressors, Junction Boxes Etc.) For A Voltage Exceeding 1000 Volts; Similar Apparatus (Including Relays, Sockets Etc.) For A Voltage Not Exceeding 1000 Volts; Boards, Panels, Consoles, Cabinets And Other Bases Equipped With Two Or More Of The Above Apparatus For Electricity Control Or Distribution Of Electricity Including Power Capacitors.]
313	Manufacture Of Insulated Wire And Cable [Insulated (Including Enameled Or Anodized) Wire, Cable (Including Coaxial Cable) And Other Insulated Conductors; Insulated Strip As Is Used In Large Capacity Machines Or Control Equipment; And Optical Fibre Cables]
314	Manufacture Of Accumulators, Primary Cells And Primary Batteries
315	Manufacture Of Electric Lamps And Lighting Equipment
319	Manufacture Of Other Electrical Equipment N.E.C.

DIVISION 32: Manufacture Of Radio, Television And Communication Equipment And Apparatus

321	Manufacture Of Electronic Valves And Tubes And Other Electronic Components
322	Manufacture Of Television And Radio Transmitters And Apparatus For Line Telephony And Line Telegraphy
323	Manufacture Of Television And Radio Receivers, Sound Or Video Recording Or Reproducing Apparatus, And Associated Goods

DIVISION 33: Manufacture Of Medical, Precision And Optical Instruments, Watches And Clocks	
331	Manufacture Of Medical Appliances And Instruments And Appliances For Measuring, Checking, Testing, Navigating And Other Purposes Except Optical Instruments
332	Manufacture Of Optical Instruments And Photographic Equipment
333	Manufacture Of Watches And Clocks
DIVISION 34: Manufacture Of Motor Vehicles, Trailers And Semi-Trailers	
341	Manufacture Of Motor Vehicles
342	Manufacture Of Bodies (Coach Work) For Motor Vehicles; Manufacture Of Trailers And Semi-Trailers
343	Manufacture Of Parts And Accessories For Motor Vehicles And Their Engines [Brakes, Gear Boxes, Axles, Road Wheels, Suspension Shock Absorbers, Radiators, Silencers, Exhaust Pipes, Clutches, Steering Wheels, Steering Columns And Steering Boxes And Other Parts And Accessories N.E.C.]
DIVISION 35: Manufacture Of Other Transport Equipment	
351	Building And Repair Of Ships & Boats
352	Manufacture Of Railway And Tramway Locomotives And Rolling Stock
353	Manufacture Of Aircraft And Spacecraft
359	Manufacture Of Transport Equipment N.E.C.
DIVISION 36: Manufacture Of Furniture; Manufacturing N.E.C	
361	Manufacture Of Furniture
369	Manufacturing N.E.C.

ANNEXURE – II

ASI DATA - ALL INDIA LEVEL

CAPITALS EMPLOYED, INPUT, OUTPUT AND GVA AT INDUSTRY (NIC 98 - 3 DIGITS) STATE

(VALUES IN LAKHS, OTHERS IN NUMBER)

All India

Sl. No	Characteristics	All	014	142	151	152	153	154	155	160	171
1	Number Of Factories	129074	2868	116	3352	912	12741	5757	1078	3078	9076
2	Factories In Operation	121815	2370	111	3025	874	11693	5368	1016	2920	8528
3	Fixed Capital	47333140	56120	10148	604775	231994	420844	1768143	715412	180413	3681511
4	Physical Working Capital	20626713	107374	3377	673680	154184	780611	2536953	244248	208029	1609097
5	Working Capital	11923101	86570	2932	239422	72178	541511	333294	537532	134431	674292
6	Invested Capital	67959853	163494	13525	1278455	386178	1201456	4305096	959660	388442	5290608
7	Gross Value Of Addition To Fixed Capital	7735049	6525	874	95493	42635	69583	250682	134369	34586	554433
8	Rent Paid For Fixed Assets	416084	754	136	6780	7694	7313	11368	13560	4411	22667
9	Outstanding Loan	28977564	82753	9002	567096	173274	541091	1826233	422398	76014	3716266
10	Interest Paid	3397229	10476	296	62499	20592	68599	354921	37676	11713	355981
11	Rent Received For Fixed Assets	106548	375	139	2115	4414	1330	2530	15720	1643	7019
12	Interest Received	260947	1752	54	6599	4458	4087	10384	3340	2385	20655
13	Gross Value Of Plant & Machinery	55380304	13763	6414	548947	244459	243436	2019894	540377	193838	4871428
14	Value Of Product And By-Product	113572196	818645	9513	4589602	1993631	3687045	4199504	1231402	1136378	6743039
15	Total Output	128738002	963431	11493	5687680	2151018	4267499	4544405	1381935	1207516	7900393
16	Fuels Consumed	7371274	14193	1492	131639	68130	125767	174888	67132	15525	837243
17	Materials Consumed	79328515	777363	1952	4121132	1635849	3250861	3094922	711731	491266	4753664

(Contd.....)

Sl. No	Characteristics	All	014	142	151	152	153	154	155	160	171
18	Total Inputs	103962377	923706	6232	5375797	1905401	3978002	3776472	1026916	703350	6471119
19	Gross Value Added	24775625	39726	5261	311883	245616	289497	767934	355019	504166	1429274
20	Depreciation	4482349	6811	1115	66089	31275	49184	156858	73148	23020	427653
21	Net Value Added	20293276	32915	4146	245794	214341	240313	611076	281871	481146	1001621
22	Net Fixed Capital Formation	1271031	-1716	-35	9786	5415	10477	31438	33598	-2124	32170
23	Gross Fixed Capital Formation	5753380	5095	1080	75875	36690	59661	188296	106746	20896	459823
24	Addition in Stock of	1665334	13101	228	186815	16085	127952	42933	13962	7122	183524
	(a) Materials, Fuels etc.	1318873	6330	-37	112676	13833	101986	31394	19384	4627	178279
	(b) Semi Finished Goods	130864	-17	-49	10480	-2282	2943	-5781	-647	79	18309
	(c) Finished Goods	215597	6788	314	63659	4534	23023	17320	-4775	2416	-13064
25	Gross Capital Formation	7418713	18195	1308	262690	52776	187613	231229	120707	28017	643347
26	Income	16479964	21685	3715	176514	186055	164402	244787	230634	465022	622973
27	Profit	9234531	6089	897	102033	94654	72361	-110513	149159	351415	-74921

CAPITALS EMPLOYED, INPUT, OUTPUT AND GVA AT INDUSTRY (NIC 98 - 3 DIGIT) BY STATE

(VALUES IN RS. IN LAKHS, OTHERS IN NUMBER)

All India

Sl. No	Characteristics	172	173	181	182	191	192	201	202	210	221
1	Number Of Factories	1888	2071	3173	17	1165	1172	1275	1768	3579	570
2	Factories In Operation	1804	1989	2996	10	1104	1103	1106	1649	3478	570
3	Fixed Capital	256080	236209	373039	848	87556	116718	5528	90804	1261344	230820
4	Physical Working Capital	180826	154239	341504	2732	137997	117532	9845	83671	346785	70596
5	Working Capital	166825	76866	295669	933	83079	92239	10228	47547	175006	95483
6	Invested Capital	436906	390448	714544	3580	225553	234250	15373	174475	1608129	301416
7	Gross Value Of Addition To Fixed Capital	48263	72261	92723	285	15971	24755	1171	12754	182560	54268
8	Rent Paid For Fixed Assets	3359	2825	12934	38	1718	3161	132	955	9023	6628
9	Outstanding Loan	177332	158341	231133	1620	36781	55921	5791	77813	566925	127050
10	Interest Paid	24044	22651	30971	214	6943	9290	686	9713	90855	14456
11	Rent Received For Fixed Assets	457	630	2195	0	640	847	38	284	1413	959
12	Interest Received	2219	1377	2211	14	496	518	60	694	4403	1833
13	Gross Value Of Plant & Machinery	227553	129701	170849	371	45177	87288	1038	82330	1548177	222763
14	Value Of Product And By-Product	809189	736137	1474455	4655	484314	532207	40457	237354	1920511	276665
15	Total Output	937890	871996	1706769	13899	559597	583416	52301	309295	2053396	678954
16	Fuels Consumed	33072	25938	39778	99	15040	19942	1135	16056	272485	13879
17	Materials Consumed	501709	420910	865795	3579	402950	374998	34974	172456	1156298	302935

(Contd.....)

Sl. No	Characteristics	172	173	181	182	191	192	201	202	210	221
18	Total Inputs	768287	710016	1330285	12797	504350	475652	47581	262014	1624236	438265
19	Gross Value Added	169603	161980	376484	1101	55248	107764	4720	47281	429160	240689
20	Depreciation	30488	36796	46412	137	10665	15093	547	10036	97054	28538
21	Net Value Added	139115	125184	330072	964	44583	92671	4173	37245	332106	212151
22	Net Fixed Capital Formation	10936	28166	29786	144	2959	7467	352	29	27836	7531
23	Gross Fixed Capital Formation	41425	64962	76198	282	13624	22560	899	10065	124890	36069
24	Addition in Stock of	23276	22437	18816	1686	140	8870	999	8393	28559	15819
	(a) Materials, Fuels etc.	8075	6863	17476	1173	-1968	4973	866	6341	13880	16100
	(b) Semi Finished Goods	3058	9663	1569	53	-1504	2749	-19	1298	1255	-948
	(c) Finished Goods	12143	5911	-229	460	3612	1148	152	754	13424	667
25	Gross Capital Formation	64701	87398	95014	1969	13763	31430	1897	18459	153449	51888
26	Income	111711	99707	286167	713	35921	80220	3355	26577	232228	191068
27	Profit	51058	33199	89189	398	8862	30216	892	7619	81561	98877

CAPITALS EMPLOYED, INPUT, OUTPUT AND GVA AT INDUSTRY (NIC 98 - 3 DIGIT) BY STATE

(VALUES IN RS. LAKHS, OTHERS IN NUMBERS)

All India

Sl. No	Characteristics	222	223	231	232	241	242	243	251	252	261
1	Number Of Factories	2393	43	449	469	2594	7574	58	1993	5005	546
2	Factories In Operation	2336	37	388	445	2478	7224	58	1915	4805	528
3	Fixed Capital	156475	14965	124759	5371678	5279685	2731785	355814	548293	1029775	362779
4	Physical Working Capital	54638	3554	107917	1794933	1184891	1509216	90096	197706	337434	90251
5	Working Capital	64773	10576	93155	1117717	742625	1209695	-16257	127330	388637	57482
6	Invested Capital	211113	18520	232676	7166611	6464576	4241001	445910	745999	1367209	453030
7	Gross Value Of Addition To Fixed Capital	43881	3170	25527	626226	256971	563557	44256	88915	179391	51828
8	Rent Paid For Fixed Assets	2458	1247	2184	14211	37096	27936	3072	5941	8167	3738
9	Outstanding Loan	106589	19571	62179	717141	3254051	1697066	121291	248223	725524	165993
10	Interest Paid	14443	1692	10990	68630	319779	227326	12189	37320	87736	14539
11	Rent Received For Fixed Assets	984	89	55	1100	9632	4887	121	333	1730	292
12	Interest Received	576	306	521	5540	21397	15709	956	2259	6482	634
13	Gross Value Of Plant & Machinery	138447	18034	154836	5822024	7866778	2473017	897317	709971	1127601	473867
14	Value Of Product And By-Product	285247	20529	539541	17083872	8355634	7432272	612121	1455720	2280939	434589
15	Total Output	393661	31818	568917	17277783	9051155	8311694	640228	1632558	2497277	452028
16	Fuels Consumed	12041	875	20450	195654	1014281	324604	61097	95567	137005	100224

(Contd.....)

Sl. No	Characteristics	222	223	231	232	241	242	243	251	252	261
17	Materials Consumed	209566	7294	414701	14001980	5201750	4491511	373284	995243	1617138	177964
18	Total Inputs	289932	24383	490773	14503810	7139062	6033248	468257	1273751	2050849	325114
19	Gross Value Added	103729	7435	78144	2773973	1912093	2278447	171971	358808	446427	126914
20	Depreciation	20131	2306	10999	408052	496267	247439	37613	54554	113469	35204
21	Net Value Added	83598	5129	67145	2365921	1415826	2031008	134358	304254	332958	91710
22	Net Fixed Capital Formation	18550	-714	10667	140400	-335239	211908	-2064	18409	45382	5642
23	Gross Fixed Capital Formation	38681	1592	21665	548452	161027	459347	35548	72963	158851	40846
24	Addition in Stock of	7078	-603	24348	166272	-69169	114994	584	10072	33232	-1534
	(a) Materials, Fuels etc.	5260	-81	22478	117619	8054	54728	-618	4084	16174	4068
	(b) Semi Finished Goods	1041	27	109	-17107	817	44698	345	2504	6584	688
	(c) Finished Goods	777	-549	1761	65760	-78040	15568	857	3484	10474	-6290
25	Gross Capital Formation	45759	988	46014	714724	91859	574341	36132	83035	192083	39313
26	Income	66696	2190	53972	2283080	1058951	1775747	119096	260994	237055	73433
27	Profit	24732	-88	22825	2128869	651492	1214497	60557	144634	120924	33221

CAPITALS EMPLOYED, INPUT, OUTPUT AND GVA AT INDUSTRY (NIC 98 - 3 DIGIT) BY STATE

(VALUES IN RS. LAKHS, OTHERS IN NUMBERS)

All India

Sl. No	Characteristics	269	271	272	273	281	289	291	292	293	300
1	Number Of Factories	11292	3315	1084	2123	2267	5784	3759	4429	662	180
2	Factories In Operation	10304	3120	1047	2043	2169	5628	3727	4293	640	164
3	Fixed Capital	2947460	7024791	1583155	301337	194693	507273	582317	641874	205305	301035
4	Physical Working Capital	610551	1560495	385957	158159	213345	358834	542052	504090	94840	78822
5	Working Capital	398652	67786	285955	100828	115292	327716	434854	344648	34698	256186
6	Invested Capital	3558011	8585286	1969113	459496	408038	866108	1124369	1145963	300145	379858
7	Gross Value Of Addition To Fixed Capital	314106	1513963	261014	59759	28047	113575	115242	101717	17850	281819
8	Rent Paid For Fixed Assets	35852	30856	6828	1492	3814	5961	12344	8718	1971	3351
9	Outstanding Loan	1545695	4492163	815881	272345	162803	359892	331528	466120	108697	239162
10	Interest Paid	175694	464036	74120	34516	24500	48537	54489	63185	17641	13186
11	Rent Received For Fixed Assets	4281	3435	1484	366	3725	1991	4819	2158	370	72
12	Interest Received	4759	29221	18609	1438	2382	3401	10031	9689	1138	384
13	Gross Value Of Plant & Machinery	3379619	8813640	1839017	302963	174677	476989	744518	668898	197897	296968
14	Value Of Product And By-Product	3393663	10894595	2933549	824472	850283	1637352	2143566	2076836	467817	587594
15	Total Output	3578610	11927154	3061365	914685	1003906	2037708	2591738	2360971	518872	682484
16	Fuels Consumed	869646	1440476	319750	130944	24074	106084	66466	55051	8175	8345
17	Materials Consumed	1350480	6664114	1980561	479251	621380	1141287	1395797	1383401	341351	386989

(Contd.....)

Sl. No	Characteristics	269	271	272	273	281	289	291	292	293	300
18	Total Inputs	2633227	9209530	2495139	752010	796318	1656206	1958826	1823009	434303	489576
19	Gross Value Added	945383	2717624	566226	162675	207588	381502	632911	537962	84569	192908
20	Depreciation	230355	490755	114316	30509	22921	61776	74352	70079	24495	31712
21	Net Value Added	715028	2226869	451910	132166	184667	319726	558559	467883	60074	161196
22	Net Fixed Capital Formation	6793	537451	67532	13279	2580	36267	23485	3866	-9725	59360
23	Gross Fixed Capital Formation	237148	1028206	181848	43788	25501	98043	97838	73944	14770	91071
24	Addition in Stock of	27591	233985	53734	28189	36968	35444	-26896	57389	-996	20659
	(a) Materials, Fuels etc.	16165	185152	16657	20216	28511	29135	30556	26704	703	13720
	(b) Semi Finished Goods	3802	10541	17250	9921	3480	4504	-59430	28475	1614	1988
	(c) Finished Goods	7624	38292	19827	-1948	4977	1805	1978	2210	-3313	4951
25	Gross Capital Formation	264740	1262190	235582	71978	62468	133486	70942	131334	13773	111731
26	Income	503482	1731977	370963	96158	156353	265227	491726	395981	40462	144659
27	Profit	230337	1042872	242801	15671	53030	121180	209829	150849	4799	108408

CAPITALS EMPLOYED, INPUT, OUTPUT AND GVA AT INDUSTRY (NIC 98 - 3 DIGIT) BY STATE

(VALUES IN RS. LAKHS, OTHERS IN NUMBERS)

All India

Sl. No	Characteristics	311	312	313	314	315	319	321	322	323	331
1	Number Of Factories	1085	916	652	239	403	572	525	239	233	762
2	Factories In Operation	1062	868	608	229	389	551	504	220	216	752
3	Fixed Capital	206275	106637	283506	115440	89781	79892	310868	162240	625600	170508
4	Physical Working Capital	258171	110593	137499	41543	31249	41104	111752	105759	239131	124337
5	Working Capital	281895	149780	29662	28921	17729	28187	70134	105749	140930	132474
6	Invested Capital	464446	217230	421005	156983	121030	120996	422619	268000	864730	294845
7	Gross Value Of Addition To Fixed Capital	39662	17696	23268	15183	15402	12354	49577	27137	203761	46614
8	Rent Paid For Fixed Assets	5442	2983	1471	885	683	762	5208	3214	5902	3363
9	Outstanding Loan	161439	165468	255926	31949	44009	47773	200462	182210	377205	107208
10	Interest Paid	31164	10865	57287	4600	6409	6996	29644	20434	36507	11944
11	Rent Received For Fixed Assets	953	302	277	23	187	343	1427	529	338	666
12	Interest Received	2570	1147	2325	1040	371	359	4037	2354	894	1365
13	Gross Value Of Plant & Machinery	227805	96707	364592	129755	123868	79435	431943	191857	647473	135092
14	Value Of Product And By-Product	1203283	572845	707296	250428	189882	220954	610867	347880	1273105	536989
15	Total Output	1387493	634570	763193	275511	216524	241814	680468	432725	1725831	703989
16	Fuels Consumed	18653	10919	18918	12212	12417	7215	22269	10674	16038	10904
17	Materials Consumed	842791	365497	582445	158926	116511	148303	383957	258906	1008567	336403

(Contd.....)

Sl. No	Characteristics	311	312	313	314	315	319	321	322	323	331
18	Total Inputs	1060692	474480	682340	197711	161375	188512	482432	352921	1518485	512314
19	Gross Value Added	326801	160091	80853	77799	55148	53303	198036	79803	207346	191676
20	Depreciation	23095	14544	27412	12619	12476	10027	43305	17220	58367	19548
21	Net Value Added	303706	145547	53441	65180	42672	43276	154731	62583	148979	172128
22	Net Fixed Capital Formation	4789	604	-12531	-250	464	1158	-8923	4500	87798	15750
23	Gross Fixed Capital Formation	27883	15148	14881	12370	12940	11184	34382	21721	146165	35298
24	Addition in Stock of	-2874	5923	19503	422	193	6794	2445	-15056	7066	3507
	(a) Materials, Fuels etc.	17579	6576	14421	-148	789	4105	4278	-4883	-4784	2842
	(b) Semi Finished Goods	-12390	1785	-32	506	288	2469	2380	-3186	1329	1578
	© Finished Goods	-8063	-2438	5114	64	-884	220	-4213	-6987	10521	-913
25	Gross Capital Formation	25009	21071	34385	12792	13133	17978	36827	6664	153231	38804
26	Income	267100	131699	-5317	59696	35581	35517	119879	38935	106570	156821
27	Profit	131337	59552	-41744	35223	11756	14956	50102	-12539	60966	85156

CAPITALS EMPLOYED, INPUT, OUTPUT AND GVA AT INDUSTRY (NIC 98 - 3 DIGIT) BY STATE
(VALUES IN RS. LAKHS, OTHERS IN NUMBERS)

All India

Sl. No.	Characteristics	332	333	341	342	343	351	352	353	359	361
1	Number Of Factories	109	137	104	311	2342	165	257	41	1260	695
2	Factories In Operation	107	128	100	302	2281	164	246	41	1198	661
3	Fixed Capital	24185	26189	1046880	50009	902693	47435	37695	26478	565039	87348
4	Physical Working Capital	13269	28371	325175	24485	346556	79630	34985	25549	205926	63237
5	Working Capital	11410	19767	-689	14027	328458	-65172	21507	21076	179190	60284
6	Invested Capital	37455	54559	1372055	74494	1249249	127065	72680	52027	770966	150585
7	Gross Value Of Addition To Fixed Capital	4437	3646	186216	9774	193088	3678	6392	3723	150931	15287
8	Rent Paid For Fixed Assets	556	868	5697	319	14409	1047	607	1219	6139	1211
9	Outstanding Loan	14798	58921	462446	30271	405087	103006	93245	6295	231847	64416
10	Interest Paid	4793	7626	29956	3844	52764	4613	6731	656	22040	8933
11	Rent Received For Fixed Assets	23	131	881	103	10788	493	85	11	1149	184
12	Interest Received	880	140	11324	173	6268	1975	1057	92	4202	229
13	Gross Value Of Plant & Machinery	21219	56070	1420985	52443	1156964	48665	43588	12103	638330	75413
14	Value Of Product And By-Product	46347	100411	3834746	97278	2586827	188441	148874	3878	2635394	251611
15	Total Output	58636	111175	4064564	122276	2837548	252843	181958	45727	2755508	312412
16	Fuels Consumed	1373	2225	46194	4274	92564	4062	6913	2230	60064	8582
17	Materials Consumed	24934	58071	2817761	76875	1652798	180714	97600	8959	1794312	182523

Sl. No.	Characteristics	332	333	341	342	343	351	352	353	359	361
18	Total Inputs	40084	86516	3297857	102257	2136727	216832	133729	22733	2137880	251250
19	Gross Value Added	18553	24658	766707	20019	700822	36011	48229	22994	617628	61161
20	Depreciation	2997	3966	150913	4660	131809	3780	4424	2828	80368	9564
21	Net Value Added	15556	20692	615794	15359	569013	32231	43805	20166	537260	51597
22	Net Fixed Capital Formation	996	-1718	3332	2294	33242	-1729	306	627	50314	-234
23	Gross Fixed Capital Formation	3993	2248	154245	6954	165050	2051	4730	3456	130682	9331
24	Addition in Stock of	829	761	21373	4342	65499	-15944	6659	4241	10889	6898
	(a) Materials, Fuels etc.	1119	63	28461	3349	44766	-14871	4864	4032	7686	3152
	(b) Semi Finished Goods	-232	-506	7814	399	14695	-2217	2671	187	3402	3444
	(c) Finished Goods	-58	1204	-14902	594	6038	1144	-876	22	-199	302
25	Gross Capital Formation	4822	3010	175618	11296	230549	-13893	11389	7696	141571	16229
26	Income	10207	12198	580141	11196	501840	26570	36466	18290	509082	41453
27	Profit	4588	-5406	369000	-831	259565	-1764	14545	5208	344253	13790

CAPITALS EMPLOYED, INPUT, OUTPUT AND GVA AT INDUSTRY (NIC 98 - 3 DIGIT) BY STATE

(VALUES IN RS. LAKHS, OTHERS IN NUMBERS)

All India

Sl. No.	Characteristics	369	371	372	Others
1	Number Of Factories	1503	17	31	4797
2	Factories In Operation	1419	17	31	4654
3	Fixed Capital	216043	1634	1039	1556170
4	Physical Working Capital	432347	2206	838	201935
5	Working Capital	398445	1210	582	119158
6	Invested Capital	648390	3840	1877	1758106
7	Gross Value Of Addition To Fixed Capital	48809	156	156	273095
8	Rent Paid For Fixed Assets	4414	20	14	16956
9	Outstanding Loan	193569	1174	968	973126
10	Interest Paid	26956	192	85	115063
11	Rent Received For Fixed Assets	844	6	0	2132
12	Interest Received	7342	0	11	7824
13	Gross Value Of Plant & Machinery	155951	2830	735	1491598
14	Value Of Product And By-Product	1811274	22651	6559	689481
15	Total Output	2144245	26778	9017	3335702
16	Fuels Consumed	17430	3014	375	117515
17	Materials Consumed	1507935	19874	5142	388323

Sl. No.	Characteristics	369	371	372	Others
18	Total Inputs	1896737	23613		
19	Gross Value Added	247508	1165	7562	2787537
20	Depreciation	26811	244	1455	548163
21	Net Value Added	220697	921	118	133030
22	Net Fixed Capital Formation	12402	-90	1337	415133
23	Gross Fixed Capital Formation	39214	154	31	-10143
24	Addition in Stock of				
	(a) Materials, Fuels etc.	42963	-5	149	122887
	(b) Semi Finished Goods	37187	-100	-76	16924
	(c) Finished Goods	3871	-1	-132	16985
25	Gross Capital Formation	1905	96	76	472
26	Income	82176	149	-20	-533
		189326	709	72	139812
27	Profit	92724	-7	1238	283111
				971	172243

EMPLOYMENT AND EMOLUMENTS AT INDUSTRY (NIC 98 - 3 DIGIT) BY STATE
(WAGES IN RS. LAKHS; OTHERS IN NUMBER)

All India

Sl. No.	Characteristics	All	014	142	151	152	153	154	155	160	171
	A. No. of Persons Engaged	7870081	91979	9231	152366	82707	296009	674517	91474	478898	967671
1	Workers	6086908	75026	8290	117980	54670	225272	538184	69431	455030	827579
1.1	Directly Employed	4591237	53375	2563	60214	40070	135382	484168	41238	176552	741528
	Men	3695860	33847	2023	49111	38306	113715	297059	36846	70819	658069
	Women	894992	19528	540	11103	1764	21663	186952	4392	105679	83458
	Children	385	0	0	0	0	4	157	0	54	1
1.2	Employed Through Contractors	1495671	21651	5727	57766	14601	89890	54016	28193	278478	86052
2	Employees Other Than Workers	1716487	14611	830	32241	27787	59656	134047	21669	21378	135715
2.1	Supervisory and Managerial	756943	4899	337	12207	9208	20072	36060	8341	6140	61665
2.2	Other Employees	959544	9712	493	20034	18579	39584	97987	13328	15238	74050
3	Unpaid family members/proprietor etc.	66687	2343	111	2145	250	11081	2285	374	2490	4376
	B. Total Man days Employed (in '000)	2368602	16183	1956	44551	29418	73540	178498	28429	139939	315749
	C. Wages and Salaries Including Employers' Contribution	7245434	15596	2817	74481	91401	92040	355299	81475	113607	697894
1	Wages and Salary Including Bonus	5833675	14883	2451	65700	77652	84390	302806	69712	98635	544600
1.1	Wages and Salary	5535699	14508	2374	62602	74747	81146	283875	66210	93898	515164
1.1.1	Workers	3047777	10802	1785	37382	35892	52380	172204	35519	76838	374439
1.1.2	Supervisory & Managerial	1617871	1856	316	14829	18631	14767	49706	18375	9878	87284
1.1.3	Other Employees	870051	1850	273	10391	20224	13999	61965	12316	7182	53441
1.2	Bonus to All Staff	297975	375	76	3098	2904	3244	18931	3501	4737	29436
2	Employers' Contribution	1411759	713	366	8781	13749	7650	52493	11763	14972	153294

Report on Annual Survey of Industries 2003-04

EMPLOYMENT AND EMOLUMENTS AT INDUSTRY (NIC 98 - 3 DIGIT) BY STATE

All India

(WAGES IN RS. LAKHS; OTHERS IN NUMBER)

Sl. No.	Characteristics	172	173	181	182	191	192	201	202	210	221
A. No. of Persons Engaged		105364	137349	378542	595	50474	95490	10090	40121	174892	51141
1	Workers	85756	113738	327052	457	40480	77674	7396	30728	136807	24911
1.1	Directly Employed	66151	100459	300294	275	34490	63507	6909	25388	101351	21991
	Men	54390	69034	118684	261	27509	41817	4940	23962	90979	21434
	Women	11761	31425	181610	14	6981	21690	1919	1426	10372	555
	Children	0	0	0	0	0	0	50	0	0	2
1.2	Employed Through Contractors	19606	13279	26757	183	5990	14167	488	5340	35456	2920
2	Employees Other Than Workers	18677	22538	49941	135	9199	17180	1698	8353	36575	26078
2.1	Supervisory and Managerial	8032	9345	23260	65	4484	6353	985	4177	17533	8669
2.2	Other Employees	10645	13193	26681	70	4715	10827	713	4376	19042	17409
3	Unpaid family members/proprietor etc.	931	1072	1549	2	796	636	996	840	1509	152
B. Total Mandays Employed (in '000)		31800	40888	111919	163	14729	27790	2414	11416	56865	17335
C. Wages and Salaries Including Employers' Contribution		60653	66509	196978	315	27059	50004	2463	18958	150666	92191
1	Wages and Salary Including Bonus	52897	59829	168708	277	22856	42633	2211	16342	125864	77017
1.1	Wages and Salary	49770	55317	158288	265	20851	39738	2087	15557	119333	73524
1.1.1	Workers	31690	38364	108807	150	13612	25757	1485	9440	72393	22934
1.1.2	Supervisory & Managerial	10915	9486	32689	73	4952	10605	388	3983	31232	26434
1.1.3	Other Employees	7165	7467	16792	42	2287	3376	214	2134	15708	24156
1.2	Bonus to All Staff	3126	4512	10420	12	2005	2896	123	785	6531	3493
2	Employers' Contribution	7756	6680	28270	38	4203	7371	252	2616	24802	15174

EMPLOYMENT AND EMOLUMENTS AT INDUSTRY (NIC 98 - 3 DIGIT) BY STATE
(WAGES IN RS. LAKHS; OTHERS IN NUMBER)

All India

Sl.No	Characteristics	222	223	231	232	241	242	243	251	252	261
	A. No. of Persons Engaged	59809	2024	25900	48171	197639	516841	25961	114585	164069	46969
1	Workers	44535	1187	20739	34250	130832	346374	20379	88817	121717	37519
1.1	Directly Employed	41346	909	17026	18898	89401	260701	17221	72381	95279	27877
	Men	37440	746	15722	18711	88040	183191	17162	67996	87748	27060
	Women	3906	163	1304	187	1361	77509	59	4385	7531	817
	Children	0	0	0	0	0	1	0	0	0	0
1.2	Employed Through Contractors	3189	279	3713	15352	41431	85674	3158	16437	26437	9642
2	Employees Other Than Workers	13995	819	4954	13862	66166	167819	5575	25161	40285	9146
2.1	Supervisory and Managerial	5946	371	1873	8410	33710	68284	3137	12270	19368	4586
2.2	Other Employees	8049	448	3081	5452	32456	99535	2438	12891	20917	4560
3	Unpaid family members/proprietor etc.	1279	18	206	59	640	2648	7	607	2067	304
	B. Total Mandays Employed (in '000)	17607	610	8584	16498	67249	158336	9481	36623	50171	14881
	C. Wages and Salaries Including Employers' Contribution	41965	2277	31147	154211	407459	561249	58540	116359	116131	40211
1	Wages and Salary Including Bonus	36276	2006	25957	115598	312464	453139	38748	95278	99732	33129
1.1	Wages and Salary	33974	1894	24691	108243	293338	425937	36336	90063	94082	31185
1.1.1	Workers	20728	628	17404	58780	133421	163881	23526	56956	46225	18441
1.1.2	Supervisory & Managerial	8036	816	4284	36303	107944	157997	9226	21448	32838	8731
1.1.3	Other Employees	5210	450	3003	13160	51973	104059	3584	11659	15019	4013
1.2	Bonus to All Staff	2301	112	1266	7355	19125	27202	2412	5215	5650	1944
2	Employers' Contribution	5689	271	5190	38613	94995	108110	19792	21081	16399	7082

Report on Annual Survey of Industries 2003-04

EMPLOYMENT AND EMOLUMENTS AT INDUSTRY (NIC 98 - 3 DIGIT) BY STATE

(WAGES IN RS. LAKHS; OTHERS IN NUMBER)

All India

S.L No	Characteristics	269	271	272	273	281	289	291	292	293	300
	A. No. of Persons Engaged	408405	364801	73249	101365	90275	192189	191017	177279	29650	21310
1	Workers	323958	268459	54856	76965	64463	148369	122216	118636	21689	12053
1.1	Directly Employed	189476	193168	39906	54893	36729	103440	101101	99408	17706	9089
	Men	168687	190755	38940	54115	36021	99845	99702	97945	15883	7200
	Women	20678	2413	966	778	708	3595	1399	1457	1823	1889
	Children	111	0	0	0	0	0	0	6	0	0
1.2	Employed Through Contractors	134481	75291	14950	22072	27734	44929	21615	19228	3984	2964
2	Employees Other Than Workers	77238	95047	17942	23430	24999	40354	66765	55992	7704	9229
2.1	Supervisory and Managerial	34622	43773	9972	11840	13129	18253	33539	27729	3645	4167
2.2	Other Employees	42616	51274	7970	11590	11870	22101	33226	28263	4059	5062
3	Unpaid family members/proprietor etc.	7210	1295	451	970	813	3465	1536	2651	256	28
	B. Total Mandays Employed (in '000)	113101	123547	24626	30766	26980	57528	57884	52853	8916	6359
	C. Wages and Salaries Including Employers' Contribution	273145	689105	128162	80487	103323	144048	281897	245133	35663	36252
1	Wages and Salary Including Bonus	220319	547414	99550	67338	80158	121708	222591	190731	26791	30673
1.1	Wages and Salary	209933	535347	95111	63562	77286	114507	209875	178817	25487	29314
1.1.1	Workers	121045	295167	53483	38398	41138	68205	95749	85991	13885	8005
1.1.2	Supervisory & Managerial	55966	157389	31574	16859	23449	29051	76682	64302	7673	15237
1.1.3	Other Employees	32922	82791	10054	8305	12699	17251	37444	28524	3929	6072
1.2	Bonus to All Staff	10386	12067	4439	3777	2872	7201	12715	11913	1304	1358
2	Employers' Contribution	52826	141691	28612	13149	23165	22340	59306	54402	8872	5579

EMPLOYMENT AND EMOLUMENTS AT INDUSTRY (NIC 98 - 3 DIGIT) BY STATE

(WAGES IN RS. LAKHS; OTHERS IN NUMBER)

All India

Report on Annual Survey of Industries 2003-04

Sl. No.	Characteristics	311	312	313	314	315	319	321	322	323	331
	A. No. of Persons Engaged	67344	51752	34037	19550	21102	24305	47197	24297	29086	47995
1	Workers	43977	34972	24259	13394	16169	17971	31253	14756	18829	30234
1.1	Directly Employed	37516	28423	18863	9604	13417	15056	26310	12543	14763	26961
	Men	35984	25683	18181	9029	11056	11986	18551	10400	10481	23558
	Women	1532	2740	682	575	2361	3070	7759	2143	4282	3403
	Children	0	0	0	0	0	0	0	0	0	0
1.2	Employed Through Contractors	6462	6549	5395	3790	2752	2915	4942	2213	4066	3273
2	Employees Other Than Workers	23048	16519	9622	6073	4752	6128	15848	9480	10206	17572
2.1	Supervisory and Managerial	12264	8754	4596	3182	2505	2915	9614	5058	4659	8397
2.2	Other Employees	10784	7765	5026	2891	2247	3213	6234	4422	5547	9175
3	Unpaid family members/proprietor etc.	319	260	157	83	182	207	97	61	51	189
	B. Total Mandays Employed (in '000)	20046	15552	10481	6133	6508	7051	14433	7329	9082	14280
	C. Wages and Salaries Including Employers' Contribution	135763	75747	36427	24473	23825	20561	69776	51475	45604	71665
1	Wages and Salary Including Bonus	94673	58956	28952	18795	16493	17143	55269	36920	36518	59021
1.1	Wages and Salary	89446	55395	27766	17959	15593	15955	53412	35613	34247	55311
1.1.1	Workers	42082	24245	13858	9691	8192	8373	21090	13663	10986	18304
1.1.2	Supervisory & Managerial	34561	23974	9278	5306	4769	5290	23994	15781	15879	26714
1.1.3	Other Employees	12803	7176	4630	2962	2632	2292	8328	6169	7382	10293
1.2	Bonus to All Staff	5227	3562	1187	835	900	1188	1857	1307	2271	3711
2	Employers' Contribution	41090	16791	7475	5678	7332	3418	14507	14555	9086	12644

EMPLOYMENT AND EMOLUMENTS AT INDUSTRY (NIC 98 - 3 DIGIT) BY STATE

(WAGES IN RS. LAKHS; OTHERS IN NUMBER)

All India

Sl. No.	Characteristics	332	333	341	342	343	351	352	353	359	361
A. No. of Persons Engaged											
1	Workers	5682	11051	72135	19292	194239	25465	20330	4295	124201	26149
1.1	Directly Employed	3856	8649	51613	16030	145323	20179	14650	2613	95742	18592
	Men	3477	8125	45694	7177	110197	11189	11238	2548	77780	14875
	Women	2709	5353	45182	7133	105354	11159	11161	2515	76135	14659
	Children	768	2772	512	44	4843	30	77	33	1645	216
1.2	Employed Through Contractors	0	0	0	0	0	0	0	0	0	0
2	Employees Other Than Workers	380	525	5919	8853	35126	8989	3413	65	17962	3717
2.1	Supervisory and Managerial	1788	2325	20494	3131	48246	5253	5604	1667	27888	7191
2.2	Other Employees	942	1431	14035	1364	26040	2083	2441	595	14608	4024
3	Unpaid family members/proprietor etc.	846	894	6459	1767	22206	3170	3163	1072	13280	3167
	B. Total Mandays Employed (in '000)	37	77	27	132	670	33	76	15	571	366
	C. Wages and Salaries Including Employers' Contribution	1713	3305	22741	5824	58781	7135	6112	1324	38792	8066
1	Wages and Salary Including Bonus	5620	17604	211141	12027	242275	28334	21922	13082	164928	27663
1.1	Wages and Salary	4783	13312	159899	10584	194472	24235	17180	11450	132201	22761
1.1.1	Workers	4504	12681	153715	10152	183838	23731	16468	11131	126274	22154
1.1.2	Supervisory & Managerial	1939	6971	77729	7020	96230	15353	9070	5237	67610	12754
1.1.3	Other Employees	1817	4848	61266	1999	65126	4669	4778	3230	44618	7282
1.2	Bonus to All Staff	748	862	14720	1133	22482	3709	2620	2664	14046	2118
2	Employers' Contribution	279	630	6184	431	10634	504	711	319	5927	608
		837	4292	51242	1443	47803	4099	4742	1632	32627	4902

EMPLOYMENT AND EMOLUMENTS AT INDUSTRY (NIC 98 - 3 DIGIT) BY STATE
(WAGES IN RS. LAKHS; OTHERS IN NUMBER)

Report on Annual Survey of Industries 2003-04

All India

SL. No.	Characteristics	369	371	372	Others
A. No. of Persons Engaged					
1	Workers	121533	730	721	137173
1.1	Directly Employed	96104	617	590	91558
	Men	80153	470	160	72839
	Women	61217	460	118	72084
	Children	18936	10	42	755
1.2	Employed Through Contractors	0	0	0	0
2	Employees Other Than Workers	15951	147	430	18719
2.1	Supervisory and Managerial	24715	103	121	43719
2.2	Other Employees	10166	49	54	16711
3	Unpaid family members/proprietor etc.	14549	54	67	27008
	B. Total Mandays Employed (in '000)	715	10	10	1897
	C. Wages and Salaries Including Employers' Contribution	35746	242	213	41529
1	Wages and Salary Including Bonus	96602	716	267	110870
1.1	Wages and Salary	84062	606	251	86080
1.1.1	Workers	79660	586	246	81622
1.1.2	Supervisory & Managerial	51348	439	153	42510
1.1.3	Other Employees	16912	96	55	23425
1.2	Bonus to All Staff	11400	51	38	15687
2	Employers' Contribution	4401	20	6	4457
		12540	110	16	24790

1447

RESEARCH REPORT ON THE EFFECTS OF THE INDUSTRIAL REVOLUTION

CHAPTER I: THE EARLY STAGES OF INDUSTRIALIZATION

Introduction

~~1464~~

11/11