

DISTRICT INCOME OF KERALA

FOREWORD

The first attempt to estimate District Income of Kerala was made in January. Till that time no attempt was made to indicate regional differentials in State Income.

The present issue, second in its series, presents the estimates of District Income of Kerala for the years 1970-71 to 1975-76. The estimates are at current prices. The estimates for the last three years are provisional and are likely to be revised, depending upon the availability of fresh data. The sectoral estimates are also presented in the set of tables given in this issue.

The estimates have been prepared by the State Income division of this Bureau with the unstinted co-operation it has received from large number of official and non-official agencies.

Trivandrum,
3-11-1977.

DR. P. A. NAIR,
Additional Director-in-charge.

SECRET

The following information was obtained from a review of the files of the [redacted] and is being furnished to you for your information. It is noted that the [redacted] has been advised that the [redacted] is being [redacted] and that the [redacted] is being [redacted]. It is also noted that the [redacted] is being [redacted] and that the [redacted] is being [redacted].

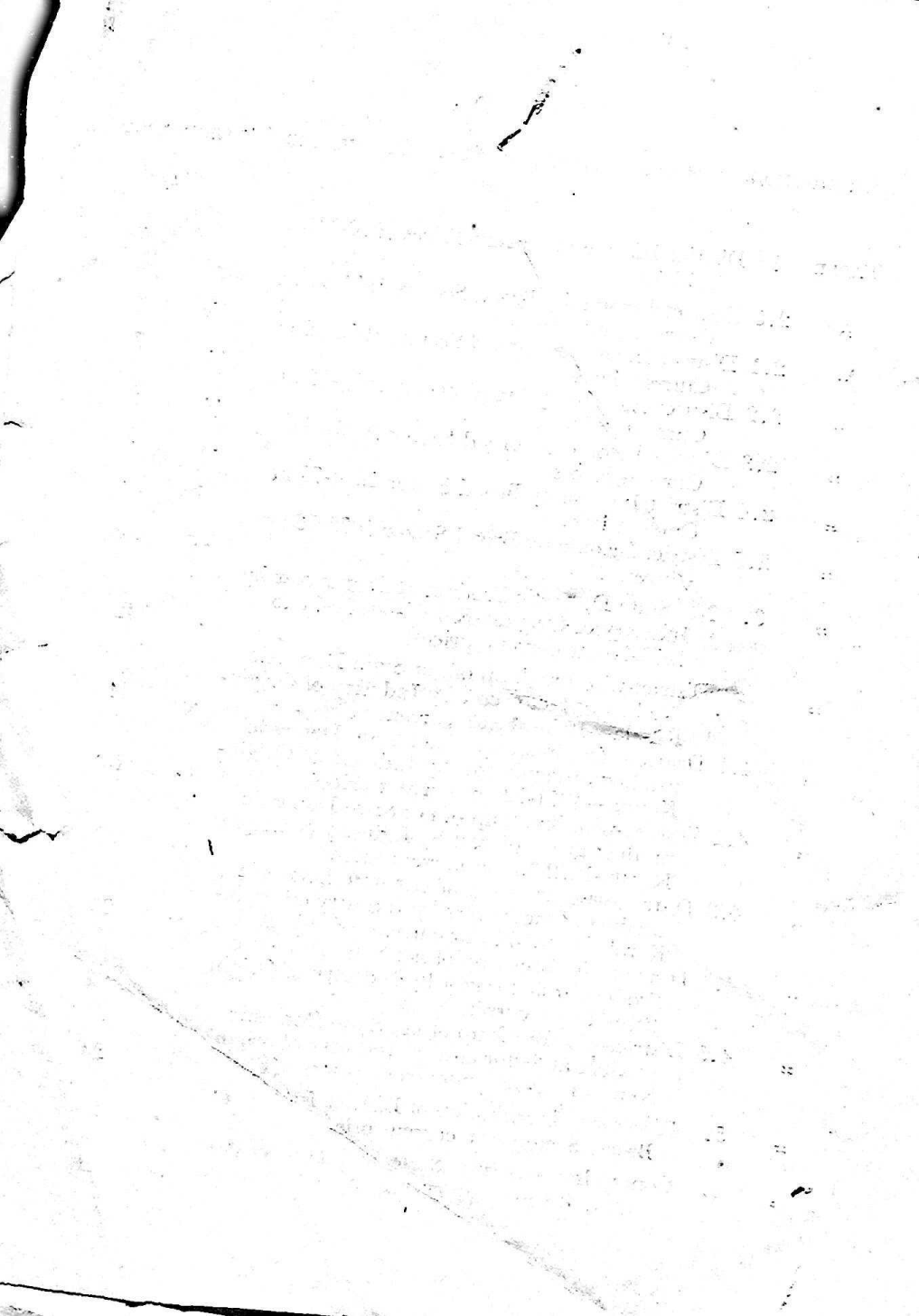
Very truly yours,
[redacted]

SECRET

CONTENTS

INTRODUCTION, GENERAL FEATURES OF STATE INCOME AND METHODOLOGY

		<i>Pages</i>
TABLE 1	District Income at current Prices 1970-71 to 1975-76	.. 5
..	2.0 District Income by Broad Sectors 1970-71 at Current Prices	.. 6
..	2.1 District Income by Broad Sectors 1971-72 at Current Prices	.. 7
..	2.2 District Income by Broad Sector 1972-73 at Current Prices	.. 8
..	2.3 District Income by Broad Sector 1973-74 at Current Prices	.. 9
..	2.4 District Income by Broad Sector 1974-75 at Current Prices	.. 10
..	2.5 District Income by Broad Sector 1975-76 at Current Prices (P)	.. 11
..	3. Net State Domestic Product at Factor cost by Industry of Origin—Kerala—1970-71 to 1975-76 (at current prices)	.. 12
..	4.0 District-wise Break up of net State Domestic Product at factor cost by Industry of Origin—Kerala—1970-71 (at current prices)	.. 14
..	4.1 District-wise Break up of net State Domestic product at factor cost by Industry of Origin—Kerala—1971-72 (at current prices)	.. 16
..	4.2 District-wise Break up of net State Domestic product at factor cost by Industry of Origin Kerala—1972-73 (at current prices)	.. 18
..	4.3 District-wise Break-up of net state Domestic Product at factor cost by Industry of origin—Kerala—1973-74 (at current prices) (P)	.. 20
..	4.4 District-wise Break up of net State Domestic Product at factor cost by Industry of Origin 1974-75 (at current prices)	.. 22
..	4.5 District-wise Break up of net State Domestic product at factor cost by Industry of origin Kerala 1975-76 (at current prices) (P)	.. 24
..	5. Percentage Distribution of District Income by Broad Sectors (at current prices)	.. 26
..	6. Comparison Between State and District Per-capita Income (at current prices)	.. 28



DISTRICT INCOME OF KERALA (1970-71 to 1975-76)

District income is the most comprehensive single indicator for the study of the comparative levels of economic development of the districts. These estimates not only help in locating areas of economic backwardness, but also facilitate framing of policies and programmes aimed at achieving balanced regional development.

State income can be defined as the end product of a state's economic activity in a given period of time. In other words State income is equal to the sum of net domestic income and net income earned from other states in India and from foreign countries. However it is not possible to follow this concept because of difficulties in measuring the flow of factor incomes across the boundaries of the State. Therefore the scope of the term State income has of necessity to be restricted to income produced within the geographical boundaries of the state. Thus the concept of state income is strictly limited to State Domestic Product i.e. total value of goods and services at factor cost produced within the state.

This Bureau of Economics and Statistics has been preparing estimates of state income on these lines based mainly on the standard methodology recommended by the Central Statistical Organisation for the past two decades. However the first attempt to indicate regional differentials in state income was made in 1977 January. The earlier attempt estimated district income of Kerala for 1970-71 to 1974-75. This monograph is the second in its series and presents estimates from 1970-71 to 1975-76. Partial revision has been made for earlier estimates depending on the availability of further refined data.

The concept adopted in the preparation is the same as that adopted in State income estimation viz., the concept of net domestic product at factor cost. According to this concept District Income includes all the income originating within the district irrespective of the fact that the income accrues to persons residing inside or outside the district. The estimates have been prepared adopting the same industrial classification as is used for the estimation of state income. The estimates are at current prices.

The computation of district income is done basically in two ways: (1) where the data are available at district level, district income was compiled independently and (2) where it is not available, state totals were allocated among the districts on the basis of appropriate indicators.

The estimates of district income have been prepared for 1970-71 to 1975-76. The estimates for last 3 years are provisional and are likely to be revised depending upon the availability of fresh data.

So far as the total district income is concerned Quilon District stands first for all years including 1975-76. During 1975-76 the net domestic product of the district was Rs. 283 crores.

Sector-wise figures reveal that the income from agriculture is maximum in Quilon district, while Ernakulam tops the list as far as income from other two sub-sectors are concerned. Quilon accounts for about 16% of the total income accruing from primary sector in 1975-76.

In respect of Quilon District primary sector contributes about 48% of the district income in 1975-76. It is seen that the crops coconut and tapioca contributed substantially to the agricultural income of the district. This may be the reason for pushing up agricultural income of this district.

The next rank is for Ernakulam District. Contribution of Ernakulam District to the income from secondary sector increased from 23% in 1971-72 to 24% in 1975-76. Similarly the tertiary sector contributed about 13% to the state's income from that sector. Ernakulam District has the highest concentration of capital intensive industries in the state. In respect of income from tertiary sector also, the largest share of income is from Ernakulam.

On the lowest rung of the ladder is Idukki District which occupies the last place if we rank the districts by population; with Malappuram just above it. Although Idukki is the second largest district, it has the lowest total cropped area. Contribution from manufacturing, transport, trade, banking and real estate and services sector are also lowest in the state. More or less the same is the position in Malappuram District.

The per capita income of the districts provide a rough indication of the average income levels. In 1974-75 Kottayam District had the highest per capita income of Rs. 1055.31, followed by Palghat with Rs. 1047.91. More or less the same trend was followed in 1975-76 except the fact that Kottayam with Rs. 1125.09 was followed by Quilon having a per capita income of Rs. 1081.37. In 1975-76 only Palghat District has shown a decrease in percapita income.

However it should also be pointed out that Quilon is exhibiting high per capita income inspite of the fact that it occupies a place in the matter of population size second only to Cannanore. On the other hand Kottayam is having lowest population size barring Idukki, which partly accounts for their high per capita income.

Percapita income of Kottayam, Ernakulam and Quilon are higher than the State percapita income for all the 6 years. Per capita income in Idukki is also higher than the State percapita income during all the years except 1971-72.

Percapita income in Malappuram, Trichur, Cannannore and Alleppey are lower than that for the State average consistently during all the years.

METHODOLOGY

For the preparation of the estimates of district income the concept followed is that of income originating within the geographical boundaries of the respective districts. In respect of the important commodity producing sectors the product method has been adopted. For most of the other sectors the State product estimated on the basis of income method has been apportioned to the districts. The estimation procedure followed in respect of the different sectors is given below:

1. *Agriculture*.—The estimates of State income originating in agriculture and live stock are based on the production or value added approach. The gross value of output for each district is obtained by evaluating all agricultural products and by-products and live stock products using district-wise production at their primary wholesale prices during the peak marketing period. For crops for which district-wise prices are not available State average prices are used for the estimation. In respect of items like 'Other spices and condiments', 'Other fresh fruits', 'Other vegetables' etc., the allocation among the districts has been done on the basis of the area under the respective item. From the gross value so arrived at, the value of inputs is deducted to obtain the gross product. The cost of repairs and maintenance and cost of depreciation for the State furnished by the Central Statistical Organisation have been allocated to the districts on the basis of total value of agricultural and live stock products in the district. The cost of depreciation has been subtracted from the gross product to get the net product for the district.

2. *Forestry*.—The division-wise data on area under forests and forest produce are available. District-wise production is compiled by using these data. The district-wise production is then evaluated at State average prices.

3. *Fishing*.—District-wise estimates of quantity and value of inland and marine fish are obtained from the Fisheries Department. The net product from this sector is estimated on the basis of these data giving allowance to cost of repairs and maintenance and other operational costs and cost of depreciation.

4. *Mining*.—District-wise production of major minerals is evaluated at average pit head prices obtained from the Indian Bureau of Mines. The value of minor minerals is also furnished by the Indian Bureau of Mines.

5. (i) *Manufacturing (Registered)*.—The value added data for 1973-74 in respect of the Census sector of the A. S. I. are compiled for each district. On the basis of these data the net product from the sector for each district is estimated.

(ii) *Manufacturing (Unregistered)*.—The State Domestic Product (S. D. P.) is allocated to the districts on the basis of working force relating to household and non-household sectors.

6. *Construction*.—The S. D. P. is apportioned to the districts on the basis of the working force in each district.

7. *Electricity, Gas and Water supply*.—For this sector also the S. D. P. is broken down according to the working force.

8. *Transport, storage and communication*.—For railways district-wise track kilometre data are used for allocating State estimate. Freight tonne kilometre data have not been used as they are not easily available. For public sector passenger transport the State income is apportioned to the districts on the basis of number of bus schedule. In respect of private sector passenger transport the income is allocated according to average value added per worker.

For goods transport, the income is broken up in proportion to the number of vehicles registered in the district. In respect of taxis and auto-rickshaws, non-mechanised transport and services incidental to transport the income is distributed according to working force.

9. *Trade, hotels and restaurants*.—The income from wholesale trade and hotels and restaurants has been apportioned on the basis of working force.

10. *Banking and Insurance*.—The State estimate has been broken down on the basis of a combined index of number of offices, and amount of advances and deposits.

11. *Real Estate and Ownership of Dwellings*.—The income from ownership of dwellings is available separately for urban and rural areas of each district. District-wise estimate is made using these data.

12. *Public Administration*.—The income from this sector relating to central and State administration is allocated on the basis of working force.

13. *Other services*.—Except for education, the State estimate is apportioned on the basis of working force.

TABLE—1

DISTRICT INCOME AT CURRENT PRICES—1970-71 TO 1975-76

District	Total Income (Rs. in lakhs)						Per capita Income (Rs.)																		
	1970-71		1971-72		1972-73		1973-74		1974-75		1975-76		1970-71		1971-72		1972-73		1973-74		1974-75		1975-76		
	(1)	(2)	(3)	(4)	(5)	(6)	(7)	(8)	(9)	(10)	(11)	(12)	(13)	(14)	(15)	(16)	(17)	(18)	(19)	(20)	(21)	(22)	(23)	(24)	
KERALA	122671	123143	142294	179805	203182	213424	584.2	573.1	647.3	799.6	883.8	908.6													
Trivandrum	11895	12696	14281	18163	20503	22314	550.2	573.7	631.3	787.6	869.9	926.3													
Quilon	15039	14841	18044	22131	24532	26321	634.0	612.3	729.1	878.9	954.6	1081.4													
Alleppey	11801	11535	13567	16816	18570	19326	564.4	542.8	627.8	769.3	836.9	858.9													
Kottayam	10149	10325	11799	14956	16906	18294	670.3	671.3	755.9	947.2	1055.3	1125.1													
Idikki	4698	4486	5033	6603	8149	8994	623.1	579.6	633.9	813.2	975.9	1051.9													
Ernakulam	13629	14268	15860	19787	23033	23603	640.8	654.8	710.9	868.6	988.1	990.1													
Trichur	11525	11555	13341	16117	18421	18994	550.4	539.5	608.6	699.8	782.5	789.8													
Palghat	9267	10274	12183	15747	18768	16331	559.3	607.6	705.6	896.8	1047.9	895.8													
Malappuram	8872	8992	10323	13006	13897	14565	485.6	478.3	534.3	655.9	681.7	695.2													
Kozhikode	12772	11852	13653	18546	19991	21055	616.1	556.7	623.4	826.5	867.7	890.3													
Cannanore	13024	12319	14210	17933	20412	21627	559.7	515.0	577.6	711.3	788.4	813.4													

P—Provisional.

TABLE-2.0

DISTRICT INCOME BY BROAD SECTORS—1970-71 AT CURRENT PRICES

(Rs. in lakhs)

State/District	Secondary			Tertiary			Total	Per capita income (Rs.)			
	Primary	Secondary	Tertiary	(1)	(2)	(3)			(4)	(5)	(6)
	Agriculture, Forestry, Fishing & Mining	Manufacturing construction Electricity & Water supply	Transport, storage, & Communication & Trade	Banking and real Estate	Public Administration and other services	Sub-Total	Total	Per capita income (Rs.)			
KERALA	67249	16321	20037	4208	14856	39101	122671	584.2			
Trivandrum	5766	1434	1932	433	2330	4695	11895	550.2			
Quilon	9429	1833	1858	374	1545	3777	15039	634.0			
Alleppey	6630	1163	2095	375	1538	4008	11801	564.4			
Kottayam	6019	1121	1451	341	1217	3009	10149	670.3			
Idilki	3231	563	430	116	358	904	4698	623.1			
Ernakulam	5223	3673	2315	811	1607	4733	13629	640.8			
Trichur	5646	967	1958	483	1471	3912	11525	550.4			
Palghat	5513	983	1449	295	1027	2771	9267	559.3			
Malappuram	5585	597	1604	164	922	2690	8872	485.6			
Kozhikode	6849	1508	2460	489	1466	4415	12772	616.1			
Cannanore	7358	1479	2485	327	1375	4187	13024	559.7			

TABLE-2.1

DISTRICT INCOME BY BROAD SECTORS—1971-72 AT CURRENT PRICES

(Rs. in lakhs)

State/District	Primary		Secondary		Tertiary				Total	Per capita income (Rs.)
	(2)	(3)	(4)	(5)	(6)	(7)	(8)	(9)		
	Agriculture, Fishing & Forestry, Mining	Manufacturing, construction, Electricity & Water supply	Transport, storage, Communication & Trade	Banking and real Estate	Public Administration and other services	Sub-Total	Total	Per capita income (Rs.)		
KERALA	61907	18449	21693	5065	16029	42787	123143	573.10		
Trivandrum	5937	1598	2115	531	2515	5161	12696	573.70		
Quilon	8600	2105	2004	459	1673	4136	14841	612.25		
Alleppey	5863	1298	2270	455	1649	4374	11535	542.82		
Kottayam	5698	1294	1607	410	1316	3333	10325	671.33		
Idikki	2849	647	465	129	395	990	4486	579.59		
Ernakulam	4790	4235	2503	1001	1739	5243	14268	654.80		
Trichur	5192	2066	2130	579	1588	4297	11555	539.45		
Palghat	6142	1104	1559	353	1116	3028	10274	607.57		
Malappuram	5407	686	1724	195	980	2899	8992	478.30		
Kozhikode	5318	1726	2664	561	1583	4808	11852	556.69		
Cannanore	6111	1690	2652	392	1474	4518	12319	515.01		

DISTRICT INCOME BY BROAD SECTOR—1972-73 AT CURRENT PRICES

(Rs. in lakhs.)

State/District	Primary		Secondary		Tertiary			Total	Per capita income (Rs.)
	(2)	(3)	(4)	(5)	(6)	(7)	(8)		
	Agriculture, Forestry, Fishing & Mining	Manufacturing, construction, Electricity & Water supply	Transport, storage & Communication & Trade	Banking and real Estate	Public Administration and other services	Sub-Total			
(1)	(2)	(3)	(4)	(5)	(6)	(7)	(8)	(9)	
KERALA	74383	19918	24886	5430	17677	47993	142294	647.26	
Trivandrum	6754	1766	2432	571	2758	5761	14281	631.34	
Quilon	11070	2357	2305	469	1843	4617	18044	729.05	
Alleppey	7240	1414	2608	486	1819	4913	19567	627.81	
Kottayam	6725	1358	1833	435	1448	3716	11799	755.86	
Idikki	3197	693	537	169	437	1143	5033	633.88	
Ernakulam	5732	4411	2714	1089	1914	5717	15860	710.89	
Trichur	6250	2251	2464	595	1781	4840	13341	608.62	
Palghat	7531	1220	1819	378	1235	3432	12183	705.85	
Malappuram	6282	752	1986	226	1077	3289	10323	534.32	
Kozhikode	6336	1891	3104	577	1745	5426	13653	623.42	
Cannanore	7266	1805	3084	435	1620	5139	14210	577.64	

TABLE-2.3

DISTRICT INCOME BY BROAD SECTOR—1973-74 AT CURRENT PRICES

(Rs. in lakhs)

State/District	Primary		Secondary		Tertiary			Total	Per capita income (Rs.)
	(1)	(2)	(3)	(4)	(5)	(6)	(7)		
		Agriculture, Forestry & Fishing & Mining	Manufacturing construction & Electricity & Water supply	Transport, storage, Communication & Trade	Banking and real Estate	Public Administration and other services	Sub-Total		
KERALA		101144	22970	28475	6803	20413	55691	179805	799.63
Trivandrum		9435	1999	2790	707	3236	6733	18163	787.64
Quilon		13826	2879	2686	613	2131	5430	22131	878.91
Alleppey		9514	1570	3016	617	2099	5732	16816	769.26
Kottayam		9191	1504	2031	564	1666	4261	14956	947.18
Idikki		4436	809	693	214	491	1958	6603	813.18
Ernakulam		7616	9993	3044	1370	2204	6618	19787	868.61
Trichur		7987	2472	2833	768	2057	5658	16117	699.83
Palghat		10530	1271	2066	457	1423	3946	15747	896.75
Malappuram		8428	812	2254	286	1226	3766	13006	655.87
Kozhikode		10188	2083	3598	657	2020	6275	18546	826.47
Cannanore		9993	2026	3504	550	1860	5914	17933	711.34

TABLE—2.4

DISTRICT INCOME BY BROAD SECTOR—1974-75 AT CURRENT PRICES

(Rs. in lakhs)

State/District	Primary		Secondary		Tertiary			Total	Per capita income (Rs.)
	(2)	(3)	(4)	(5)	(6)	(7)	(8)		
KERALA	110857	24619	34941	7874	24891	67706	203182	883.75	
Trivandrum	10127	2122	3529	822	3903	8254	20503	869.88	
Quilon	14874	3097	3227	712	2622	6561	24532	954.55	
Alleppey	9954	1674	3657	711	2574	6942	18570	836.86	
Kottayam	10120	1606	2464	652	2064	5180	16906	1055.31	
Idikki	5721	858	743	229	598	1570	8149	975.93	
Ernakulam	8780	5989	3968	1618	2678	8264	23033	988.12	
Trichur	8916	2653	3448	886	2518	6852	18421	782.54	
Palghat	12648	1355	2509	528	1728	4765	18768	1047.91	
Malappuram	8526	863	2710	324	1474	4508	13897	681.56	
Kozhikode	10131	2234	4407	752	2467	7626	19991	867.66	
Cannanore	11060	2168	4279	640	2265	7184	20412	788.41	

TABLE-2.5

DISTRICT INCOME BY BROAD SECTOR—1975-76 AT CURRENT PRICES (P)

(Rs. in lakhs)

State/District	Primary			Secondary			Tertiary			Total	Per capita income (Rs.)
	(1)	(2)	(3)	(4)	(5)	(6)	(7)	(8)	(9)		
		Agriculture, Forestry, Fishing & Mining	Manufacturing construction & Electricity & Water supply	Transport, storage & Communication & Trade	Banking and real Estate	Public Administration and other services	Sub-Total				
KERALA											
Trivandrum	108048	25592	40799	9321	29664	79784	213424	908.57			
Quilon	10671	2211	3858	968	4606	9432	22314	926.28			
Alleppey	17439	3199	3774	789	3120	7683	28321	1081.37			
Kottayam	9635	1748	4116	769	3058	7943	19326	858.93			
Idikki	10633	1672	2824	717	2448	5989	18294	1125.09			
Ernakulam	5942	913	1032	261	846	2139	8994	1051.93			
Trichur	7341	6196	4741	2278	3047	10066	23603	990.06			
Palghat	8094	2746	4133	982	3039	8154	18994	789.77			
Malappuram	9231	1419	2973	643	2065	5681	16331	895.83			
Kozhikode	8412	911	3126	346	1770	5242	14565	695.23			
Cannanore	9859	2323	5169	778	2926	8873	21055	890.27			
	10791	2254	5053	790	2739	8582	21627	813.35			

P—Provisional.

TABLE-3

NET STATE DOMESTIC PRODUCT AT FACTOR COST BY INDUSTRY OF ORIGIN—KERALA—1970-71—1975-76
(AT CURRENT PRICES)

Industry of origin	(Rs. Lakhs)					
	1970-71	1971-72	1972-73	1973-74	1974-75	1975-76
(1)	(2)	(3)	(4)	(5)	(6)	(7)
1. Agriculture	63292	57747	69387	94105	102402	96857
2. Forestry and Logging	1255	1118	1437	2189	2489	3306
3. Fishing	2573	2831	3302	4559	5660	7369
4. Mining	129	211	257	291	306	516
Sub-Total: Primary	67249	61907	74383	101144	110857	108048
5. Manufacturing	12524	14041	14866	17719	19253	15576
5.1 Registered	7923	9196	9679	11511	12568	12819
5.2 Un-registered	4601	4845	5187	6208	6685	6757
6. Construction	2628	3016	3527	3604	3713	4328
7. Electricity, Gas and Water Supply	1169	1392	1525	1647	1653	1688
7.1 Electricity	1126	1344	1469	1583	1557	1571
7.2 Water supply	43	48	56	64	96	117
Sub-Total: Secondary	16321	18449	19918	22970	24619	25592
8. Transport, Storage & Communication	6108	6960	7565	8475	10993	13407
8.1 Railways	653	631	649	591	747	986
8.2 Transport by other means & Storage	4551	5237	5852	6769	8921	10916
8.3 Communication	904	1092	1064	1115	1325	1505
9. Trade and Hotels and Restaurants	13929	14733	17321	20000	23948	27392
Sub-Total	20037	21693	24886	28475	34941	40799

Table-3—Contd.

(Rs. in lakhs)

Industry of origin	1970-71	1971-72	1972-73	1973-74	1974-75	1975-76
(1)	(2)	(3)	(4)	(5)	(6)	(7)
10. Banking and Insurance	1624	2325	2598	3339	4217	4934
11. Real Estate, Ownership of dwellings etc.	2584	2740	2832	3464	3657	4387
Sub-Total	4208	5065	5430	6803	7874	9321
12. Public Administration	3914	4303	4808	6015	7002	8101
13. Other services	10942	11726	12869	14398	17889	21563
Sub-Total	14856	16029	17677	20413	24891	29664
Sub-Total: Tertiary	39101	42787	47993	55691	67706	79784
Net Domestic Product at Factor Cost	122671	123143	142294	179805	203182	213424
Population (000) Persons	20998	21487	21984	22486	22991	23490
Percapita Income (Rupees)	584.20	573.10	647.26	799.63	883.75	908.57

P. Provisional.

TABLE-4.0

DISTRICT-WISE BREAK UP OF NET STATE DOMESTIC PRODUCT AT FACTOR COST BY INDUSTRY OF ORIGIN—KERALA—1970-71 (AT CURRENT PRICES)

Industry of Origin	(Rs. in Lakhs)												
	Trivandrum	Quilon	Alleppey	Koita-yam	Idukki	Ernakulam	Trichur	Palghat	Mala-Kozhappuram	Kozhikode	Cannanore	Kerala State	
(1)	(2)	(3)	(4)	(5)	(6)	(7)	(8)	(9)	(10)	(11)	(12)	(13)	
1. Agriculture	5563	8728	6487	5981	2956	5127	5424	5494	4969	5968	6595	63292	
2. Forestry and Logging	103	403	1	7	274	1	70	8	105	182	101	1255	
3. Fishing	92	254	130	24	..	85	143	8	505	690	642	2573	
4. Mining	8	44	12	7	1	10	9	3	6	9	20	129	
Sub-Total: Primary	5766	9429	6630	6019	3231	5223	5646	5513	5585	6849	7358	67249	
5. Manufacturing	961	1457	828	826	310	3052	1632	703	405	1175	1175	12524	
5.1 Registered	396	1133	325	578	261	2385	1062	357	111	800	515	7923	
5.2 Un-registered	565	324	503	248	49	667	570	346	294	375	660	4601	
6. Construction	247	216	227	185	198	460	238	203	165	240	249	2628	
7. Electricity, Gas and Water Supply	226	160	108	110	55	161	97	77	27	93	55	1169	
7.1 Electricity	212	155	105	108	54	153	96	75	26	90	52	1126	
7.2 Water supply	14	5	3	2	1	8	1	2	1	3	3	43	
Sub-Total: Secondary	1434	1833	1163	1121	563	3673	1967	983	597	1508	1479	16321	

8. Transport, Storage and Communication	618	495	502	413	182	1434	530	404	382	617	531	6108
8.1 Railways	28	75	22	29	..	61	59	108	80	81	110	653
8.2 Transport by other means and Storage	480	343	400	320	142	1275	345	208	257	446	335	4551
8.3 Communication	110	77	80	64	40	98	126	88	45	90	86	904
9. Trade and Hotels & Restaurants	1314	1363	1593	1038	248	881	1428	1045	1222	1843	1954	13929
Sub-Total	1932	1858	2095	1451	430	2315	1958	1449	1604	2460	2485	20037
10. Banking and Insurance	190	159	139	127	29	397	184	107	46	123	123	1624
11. Real Estate, Ownership of Dwellings etc.	243	215	236	214	87	414	299	188	118	366	204	2584
Sub-Total:	433	374	375	341	116	811	483	295	164	489	327	4208
12. Public Administration	971	383	389	247	79	418	370	262	173	325	297	3914
13. Other services	1359	1162	1149	970	279	1189	1101	765	749	1141	1078	10942
Sub-Total:	2330	1545	1538	1217	358	1607	1471	1027	922	1466	1375	14856
Sub-Total: Tertiary	4695	3777	4008	3009	904	4733	3912	2771	2690	4415	4187	39101
Net Domestic Product at Factor Cost	11895	15039	11801	10149	4698	13629	11525	9267	8872	12772	13024	122671
Population (000 Persons)	2162	2372	2091	1514	754	2127	2094	1657	1827	2073	2327	20998
Per capita Income (Rupees)	550.19	634.02	564.37	670.34	623.08	640.76	550.38	559.26	485.60	616.11	559.69	584.20

TABLE-4.1

DISTRICT-WISE BREAK UP OF NET STATE DOMESTIC PRODUCT AT FACTOR COST BY INDUSTRY OF ORIGIN—KERALA—1971-72 (AT CURRENT PRICES)

(Rs. in Lakhs)

Industry of Origin	Trinam- drum	Quilon	Alle- ppey	Kotta- yam	Idakki	Erna- kulam	Trichur	Palghat	Mala- ppuram	Kozhi- kode	Canna- nore	Kerala State
(1)	(2)	(3)	(4)	(5)	(6)	(7)	(8)	(9)	(10)	(11)	(12)	(13)
1. Agriculture	5567	7865	5561	5659	2570	4568	4753	6104	4816	4729	5555	57747
2. Forestry and Logging	23	390	..	6	278	2	104	12	132	111	60	1118
3. Fishing	334	274	281	22	..	204	320	20	450	463	463	2831
4. Mining	13	71	21	11	1	16	15	6	9	15	33	211
Sub-Total: Primary	5937	8600	5863	5698	2849	4790	5192	6142	5407	5318	6111	61907
5. Manufacturing	1046	1666	909	951	354	3515	1677	779	465	1341	1338	14041
5.1 Registered	451	1324	377	690	303	2814	1076	414	156	947	644	9196
5.2 Un-registered	595	342	532	261	51	701	601	365	309	394	694	4845
6. Construction	283	248	260	212	227	528	273	234	190	275	286	3016
7. Electricity, Gas & Water Supply	269	191	129	131	66	192	116	91	31	110	66	1392
7.1 Electricity	253	186	125	129	65	183	115	89	30	107	62	1344
7.2 Water supply	16	5	4	2	1	9	1	2	1	3	4	48
Sub-Total: Secondary	1598	2105	1298	1294	647	4235	2066	1104	686	1726	1690	18449

8. Transport, Storage and Communication

725	562	586	509	203	1570	619	454	432	715	585	6960
27	72	21	29	..	59	57	104	78	78	106	631
565	397	467	403	155	1392	411	243	300	528	376	5237
133	93	97	77	48	119	151	107	54	109	103	1092
1390	1442	1684	1098	262	933	1511	1105	1292	1949	2067	14733
2115	2004	2270	1607	465	2503	2130	1559	1724	2664	2652	21693

Sub-Total:

10. Banking and Insurance

271	228	199	182	42	568	263	153	67	176	176	2325
260	231	256	228	87	433	316	200	128	385	216	2740
531	459	455	410	129	1001	579	353	195	561	392	5065

Sub-Total:

12. Public Administration

1067	423	417	271	86	466	408	288	190	362	325	4303
1448	1250	1232	1045	310	1273	1180	828	790	1221	1149	11726
2515	1673	1649	1316	396	1739	1588	1116	980	1583	1474	16029

Sub-Total:

Sub-Total: Tertiary

5161	4136	4374	3333	990	5243	4297	3028	2899	4808	4518	42787
------	------	------	------	-----	------	------	------	------	------	------	-------

Net Domestic Product at Factor Cost

12696	14841	11535	10325	4486	14268	11555	10274	8992	11852	12319	129143
-------	-------	-------	-------	------	-------	-------	-------	------	-------	-------	--------

Population (000 Persons)

2213	2424	2125	1538	774	2179	2142	1691	1880	2129	2392	21487
------	------	------	------	-----	------	------	------	------	------	------	-------

Per Capita Income

573.70	612.25	542.82	671.33	579.59	654.80	539.45	607.57	478.30	556.69	515.01	573.10
--------	--------	--------	--------	--------	--------	--------	--------	--------	--------	--------	--------

(Rupees)

TABLE-4.2

DISTRICT-WISE BREAK UP OF NET STATE DOMESTIC PRODUCT AT FACTOR COST BY INDUSTRY OF ORIGIN—KERALA—1972-73 (AT CURRENT PRICES)

Industry of Origin	(Rupees in Lakhs)												
	(1)	(2)	(3)	(4)	(5)	(6)	(7)	(8)	(9)	(10)	(11)	(12)	(13)
	Trivan- drum	Quilon	All- phey	Kotta- yam	Idukki	Erna- kulam	Trichur	Palghat	Mala- ppuram	Kozhi- kode	Canna- nore	Kerala State	
1. Agriculture	6321	10089	6779	6682	2887	5412	5794	7466	5586	5606	6765	69387	
2. Forestry and Logging	19	520	..	5	308	2	61	8	227	235	52	1437	
3. Fishing	399	374	436	24	..	299	377	50	458	476	409	3302	
4. Mining	15	87	25	14	2	19	18	7	11	19	40	257	
Sub-Total: Primary	6754	11070	7240	6725	3197	5732	6250	7531	6282	6336	7266	74383	
5. Manufacturing	1140	1858	968	966	355	3584	1805	847	496	1448	1399	14866	
5.1 Registered	503	1491	397	687	300	2836	1161	455	165	1026	658	9679	
5.2 Un-registered	637	367	571	279	55	748	644	392	331	422	741	5187	
6. Construction	331	290	305	248	266	617	319	273	222	322	334	3527	
7. Electricity, Gas and Water supply	295	209	141	144	72	210	127	100	34	121	72	1525	
7.1 Electricity	276	203	137	141	71	200	126	97	33	117	68	1469	
7.2 Water supply	19	6	4	3	1	10	1	3	1	4	4	56	
Sub-Total: Secondary	1766	2357	1414	1358	693	4411	2251	1220	752	1891	1805	19918	

8. Transport, Storage and Communication	791	610	635	553	232	1630	670	510	470	807	807	657	7565
8.1 Railways	27	75	22	29	..	61	59	107	80	80	80	109	649
8.2 Transport by other means & Storage	634	445	519	449	185	1453	463	299	338	620	620	447	5852
8.3 Communication	130	90	94	75	47	116	148	104	52	107	107	101	1064
9. Trade and Hotels and Restaurants	1641	1695	1973	1280	305	1084	1794	1309	1516	2296	2428	17321	
Sub-Total	2432	2305	2608	1833	537	2714	2464	1819	1986	3104	3084	24886	
10. Banking and Insurance	303	255	222	204	47	634	294	172	74	196	196	197	2598
11. Real Estate, Ownership of Dwellings etc.	268	214	264	231	122	455	301	206	152	381	381	238	2832
Sub-Total	571	469	486	435	169	1089	595	378	226	577	577	435	5430
12. Public Administration	1184	469	463	301	97	518	479	321	211	405	405	360	4808
13. Other services	1574	1374	1356	1147	340	1396	1302	914	866	1340	1260	1260	12869
Sub-Total	2758	1843	1819	1448	437	1914	1781	1235	1077	1745	1620	17677	
Sub-Total: Tertiary	5761	4617	4913	3716	1143	5717	4840	3432	3289	5426	5139	47993	
Net domestic product at factor cost	14281	18044	13567	11799	5033	15860	13341	12183	10323	13653	14210	142294	
Population (000 Persons)	2262	2475	2161	1561	794	2231	2192	1726	1932	2190	2460	21984	
Per Capita Income (Rupees)	631.34	729.05	627.81	755.86	633.88	710.89	608.62	705.85	534.32	623.42	577.64	647.26	

TABLE-4.3

DISTRICT-WISE BREAK UP OF NET STATE DOMESTIC PRODUCT AT FACTOR COST BY INDUSTRY OF ORIGIN—KERALA—1973-74 (AT CURRENT PRICES) P.

Industry of Origin	(Rupees in Lakhs)											
	(2)	(3)	(4)	(5)	(6)	(7)	(8)	(9)	(10)	(11)	(12)	(13)
	Trivani- drum	Quilon	Allep- phey	Kotta- yam	Idukki	Erna- kulam	Trichur	Palghat	Mala- ppuram	Kozhi- kode	Canna- nore	Kerala State
1. Agriculture	8818	12874	8884	9128	4178	7180	7284	10417	7510	8836	8996	94105
2. Forestry and Logging	49	337	..	14	256	2	162	36	273	674	386	2189
3. Fishing	551	517	602	33	..	412	521	69	632	657	565	4559
4. Mining	17	98	28	16	2	22	20	8	13	21	46	291
Sub-Total: Primary	9435	13826	9514	9191	4436	7616	7987	10530	8428	10188	9993	101144
5. Manufacturing	1337	2354	1107	1095	459	4696	2009	884	548	1624	1606	17719
5.1 Registered	574	1915	424	761	394	3800	1239	415	152	1119	718	11511
5.2 Un-registered	763	439	683	334	65	896	770	469	396	505	888	6208
6. Construction	338	296	311	254	272	630	326	279	227	329	342	3604
7. Electricity, Gas and Water supply	320	225	152	155	78	227	137	108	37	130	78	1647
7.1 Electricity	298	218	147	152	77	215	136	105	36	126	73	1583
7.2 Water supply	22	7	5	3	1	12	1	3	1	4	5	64
Sub-Total: Secondary	1995	2875	1570	1504	809	5553	2472	1271	812	2083	2026	22970

8. Transport, Storage and Communication	889	728	745	563	303	1802	747	546	507	942	703	8475
8.1 Railways	25	68	20	26	55	54	98	73	73	99	591	
8.2 Transport by other means and storage	728	565	627	458	254	1626	538	359	379	757	498	6769
8.3 Communication	136	95	98	79	49	121	155	109	55	112	106	1115
9. Trade and Hotels and Restaurants	1901	1958	2271	1468	350	1242	2086	1520	1747	2656	2801	20000
Sub-Total	2790	2686	3016	2031	653	3044	2833	2066	2254	3598	3504	28475
10. Banking and Insurance	390	327	286	262	60	815	378	220	96	252	253	3339
11. Real Estate, Ownership of Dwellings etc.	317	286	331	302	154	555	390	237	190	405	297	3464
Sub-Total	707	613	617	564	214	1370	768	457	286	657	550	6803
12. Public Administration	1482	586	579	378	122	647	598	403	263	508	449	6015
13. Other services	1754	1545	1520	1288	369	1557	1459	1020	963	1512	1411	14398
Sub-Total	3236	2131	2099	1666	491	2204	2057	1423	1226	2020	1860	20413
Sub-Total: Tertiary	6733	5430	5732	4261	1358	6618	5658	3946	3766	6275	5914	55691
Net domestic product at factor cost	18163	22131	16816	14956	6603	19787	16117	15747	13006	18546	17933	179805
Population ('000 persons)	2306	2518	2186	1579	812	2278	2303	1756	1983	2244	2521	22486
Per capita Income (Rupees)	787.64	878.91	769.26	947.18	813.18	868.61	699.83	896.75	655.87	826.47	711.34	799.63

P. Provisional.

TABLE-4.4

DISTRICT-WISE BREAK UP OF NET STATE DOMESTIC PRODUCT AT FACTOR COST BY INDUSTRY OF
ORIGIN—KERALA—1974-75 (AT CURRENT PRICES)*

Industry of Origin	(Rupees in Lakhs)												
	(2)	(3)	(4)	(5)	(6)	(7)	(8)	(9)	(10)	(11)	(12)	(13)	
	Trivan- drum	Quilon	Alle- ppey	Kolla- yam	Idukki	Erna- kulam	Trichur	Palghat	Mala- ppuram	Kozhi- kode	Canna- nore	Kerala State	
1. Agriculture	9370	13701	9175	10046	5427	8243	8069	12514	7424	8551	9882	102402	
2. Forestry and Logging	55	428	1	16	292	2	180	40	304	742	429	2489	
3. Fishing	684	641	748	41	..	512	646	86	785	816	701	5660	
4. Mining	18	104	30	17	2	23	21	8	13	22	48	306	
Sub-Total: Primary	10127	14874	9954	10120	5721	8780	8916	12648	8526	10131	11060	110857	
5. Manufacturing	1448	2566	1201	1191	501	5110	2182	960	592	1765	1737	19253	
5.1 Registered	627	2091	462	831	430	4149	1352	454	166	1222	784	12568	
5.2 Un-registered	821	475	739	360	71	961	830	506	426	543	953	6685	
6. Construction	349	306	320	261	280	649	336	287	234	339	352	3713	
7. Electricity, Gas and Water supply	325	225	153	154	77	230	135	108	37	130	79	1653	
7.1 Electricity	293	215	145	150	75	212	133	103	35	124	72	1557	
7.2 Water supply	32	10	8	4	2	18	2	5	2	6	7	96	
Sub-Total: Secondary	2122	3097	1674	1606	858	5989	2653	1355	863	2234	2168	24619	

8. Transport, Storage and Communication	1248	882	944	717	327	2491	934	680	621	1222	927	10993
8.1 Railways	32	86	25	34	..	70	68	123	92	92	125	747
8.2 Transport by other means and Storage	1055	684	802	589	268	2277	682	427	464	997	676	8921
8.3 Communication	161	112	117	94	59	144	184	130	65	133	126	1325
9. Trade and Hotels and Restaurants	2281	2345	2713	1747	416	1477	2514	1829	2089	3185	3352	23948
Sub-Total	3529	3227	3657	2464	743	3968	3448	2509	2710	4407	4279	34941

10. Banking and Insurance	492	413	361	331	76	1030	477	278	121	318	320	4217
11. Real Estate, Ownership of Developings etc.	330	299	350	321	153	588	409	250	203	434	320	3657
Sub-Total	822	712	711	652	229	1618	886	528	324	752	640	7874

12. Public Administration	1724	682	676	439	141	756	696	465	304	597	522	7002
13. Other services	2179	1940	1898	1625	457	1922	1822	1263	1170	1870	1743	17889
Sub-Total	3903	2622	2574	2064	598	2678	2518	1728	1474	2467	2265	24891
Sub-Total: Tertiary	8254	6561	6942	5180	1570	8264	6852	4765	4508	7626	7184	67706

Net domestic product at factor cost	20503	24532	18570	16906	8149	23033	18421	18768	13897	19991	20412	203182
Population ('000 Persons)	2357	2570	2219	1602	835	2331	2354	1791	2039	2304	2589	22991
Percapita Income (Rupees)	869.88	954.55	836.86	1055.31	975.93	988.12	782.54	1047.91	681.56	867.66	788.41	883.75

*P. Provisional

TABLE-4.5

DISTRICT-WISE BREAK UP OF NET STATE DOMESTIC PRODUCT AT FACTOR COST BY INDUSTRY OF ORIGIN—KERALA—1975-76 (AT CURRENT PRICES) P.*

Industry of Origin	(Rupees in Lakhs)												
	(1)	(2)	(3)	(4)	(5)	(6)	(7)	(8)	(9)	(10)	(11)	(12)	(13)
	Trivandrum	Quilon	Alleppey	Kollam	Idukki	Ernakulam	Trichur	Palghat	Malappuram	Kozhikode	Cannanore	Kerala State	
1. Agriculture	9647	15391	8649	10538	5317	6654	6838	9008	6906	8223	9686	96857	
2. Forestry and Lodging	103	854	1	7	624	7	402	106	476	558	168	3306	
3. Fishing	890	835	973	54	..	666	842	112	1022	1062	913	7369	
4. Mining	31	359	12	34	1	14	12	5	8	16	24	516	
Sub-Total: Primary	10671	17439	9635	10633	5942	7341	8094	9231	8412	9859	10791	108048	
5. Manufacturing	1470	2613	1219	1211	509	5204	2218	974	600	1795	1763	19576	
5.1 Registered	640	2133	472	847	438	4232	1379	463	169	1246	800	12819	
5.2 Un-registered	830	480	747	364	71	972	839	511	431	549	963	6757	
6. Construction	406	356	374	305	326	757	391	335	273	395	410	4328	
7. Electricity, Gas and Water supply	335	230	155	156	78	235	137	110	38	133	81	1688	
7.1 Electricity	295	217	146	151	76	214	134	104	36	125	73	1571	
7.2 Water supply	40	13	9	5	2	21	3	6	2	8	8	117	
Sub-Total: Secondary	2211	3199	1748	1672	913	6196	2746	1419	911	2323	2254	25592	

8. Transport, Storage and Communication	1243	1091	1020	835	558	3062	1242	873	740	1522	1221	13407
8.1 Railways	39	119	46	63	..	102	83	152	104	146	132	986
8.2 Transport by other means and Storage	1021	844	841	666	491	2796	950	573	562	1225	947	10916
8.3 Communication	183	128	133	106	67	164	209	148	74	151	142	1505
9. Trade and Hotels and Restaurants	2615	2683	3096	1989	474	1679	2891	2100	2386	3647	3832	27392
Sub-Total	3858	3774	4116	2824	1032	4741	4133	2973	3126	5169	5053	40799
10. Banking and Insurance	586	437	430	374	93	1251	517	327	146	376	367	4934
11. Real Estate, Ownership of Dwellings etc.	382	352	339	343	168	1027	435	316	200	402	423	4387
Sub-Total	968	789	769	717	261	2278	982	643	346	778	790	9321
12. Public Administration	1981	789	780	508	164	876	824	538	354	681	606	8101
13. Other services	2625	2331	2278	1940	682	2171	2215	1527	1416	2245	2133	21563
Sub-Total	4606	3120	3058	2448	846	3047	3039	2065	1770	2926	2739	29664
Sub-Total: Tertiary	9432	7683	6943	5989	2139	10066	8154	5681	5242	8873	8582	79784
Net domestic product at factor cost	22314	2832	19326	18294	8994	23603	18994	16331	14565	21055	21627	213424
Population (000 persons)	2409	2169	2250	1626	855	2384	2405	1823	2095	2365	2659	23190
Percentage Income (Rupees)	926.28	1081.7	858.93	1125.09	1051.93	990.06	789.77	895.83	695.23	890.27	813.35	908.57

* Provisional.

TABLE-5

PERCENTAGE DISTRIBUTION OF DISTRICT INCOME BY BROAD SECTORS
(AT CURRENT PRICES)

State/Districts	1970-71			1971-72			1972-73		
	Primary (2)	Secondary (3)	Tertiary (4)	Primary (5)	Secondary (6)	Tertiary (7)	Primary (8)	Secondary (9)	Tertiary (10)
KERALA STATE	100.0	100.0	100.0	100.0	100.0	100.0	100.0	100.0	100.0
Trivandrum	8.6	8.8	12.0	9.6	8.7	12.1	9.1	8.9	12.0
Quilon	14.0	11.2	9.7	13.9	11.4	9.7	14.9	11.8	9.6
Alleppey	9.8	7.1	10.2	9.4	7.0	10.2	9.7	7.1	10.2
Kottayam	9.0	6.9	7.7	9.2	7.0	7.8	9.0	6.8	7.7
Idikkki	4.8	3.4	2.3	4.6	3.5	2.3	4.3	3.5	2.4
Ernakulam	7.8	22.5	12.1	7.7	23.0	12.2	7.7	22.1	11.9
Trichur	8.4	12.1	10.0	8.4	11.2	10.0	8.4	11.3	10.1
Palghat	8.2	6.0	7.1	9.9	6.0	7.1	10.1	6.1	7.2
Malappuram	8.3	3.7	6.9	8.7	3.7	6.8	8.5	3.8	6.9
Kozhikode	10.2	9.2	11.3	8.8	9.4	11.2	8.5	9.5	11.3
Cannanore	10.9	9.1	10.7	9.8	9.1	10.6	9.8	9.1	-10.7

TABLE-5—Contd.

PERCENTAGE DISTRIBUTION OF DISTRICT INCOME BY BROAD SECTORS
(AT CURRENT PRICES)

State/Districts	1973-74*			1974-75*			1975-76*		
	Primary (2)	Secondary (3)	Tertiary (4)	Primary (5)	Secondary (6)	Tertiary (7)	Primary (8)	Secondary (9)	Tertiary (10)
KERALA STATE	100.0	100.0	100.0	100.0	100.0	100.0	100.0	100.0	100.0
Trivandrum	9.3	8.7	12.1	9.1	8.6	12.2	9.9	8.6	11.8
Quilon	13.7	12.5	9.7	13.4	12.6	9.7	16.1	12.5	9.6
Alleppey	9.4	6.8	10.3	9.0	6.8	10.2	8.9	6.8	10.0
Kottayam	9.1	6.6	7.6	9.1	6.5	7.7	9.8	6.5	7.5
Idukki	4.4	3.5	2.4	5.2	3.5	2.3	5.5	3.6	2.7
Ernakulam	7.5	24.2	1.9	7.9	24.3	12.2	6.8	24.2	12.6
Trichur	7.9	10.8	10.2	8.1	10.8	10.1	7.5	10.8	10.2
Palghat	10.4	5.5	7.1	11.4	5.5	7.0	8.6	5.5	7.1
Malappuram	8.3	3.5	6.8	7.7	3.5	6.7	7.8	3.6	6.6
Kozhikode	10.1		11.3	9.1	9.1	11.3	9.1	9.1	11.1
Cannanore	9.9	3.8	10.6	10.0	8.8	10.6	10.0	8.8	10.8

*Provisional.

COMPARISON OF PER CAPITA INCOME IN STATE AND DISTRICT PERCAPITA INCOME
(AT CURRENT PRICES)

State/District	1970-71	1971-72	1972-73	1973-74	1974-75	1975-76
(1)	(2)	(3)	(4)	(5)	(6)	(7)
KERALA STATE	100	100	100	100	100	100
Trivandrum	94	100	98	99	98	102
Quilon	109	107	113	110	107	119
Alleppey	97	95	97	96	95	95
Kottayam	115	117	117	118	119	124
Idukki	107	101	98	102	110	116
Ernakulam	110	114	110	109	112	109
Trichur	94	94	94	88	89	87
Palghat	96	106	109	112	119	99
Malappuram	83	83	83	82	77	77
Kozhikode	105	97	96	103	98	98
Cananore	96	90	89	89	89	90

1289