



GOVERNMENT OF KERALA

A collage of industrial and mining scenes. On the left, a large dam with water cascading over it. In the center, a high-voltage electricity pylon. On the right, a close-up of large industrial gears. In the foreground, a mining truck is shown in a deep excavation site.

**REPORT ON  
INDEX OF INDUSTRIAL PRODUCTION – KERALA  
(2009-10 TO 2014-15)**

Department of Economics and Statistics Kerala  
April 2017









**Government of Kerala**

**Report on**  
**Index of Industrial Production**  
**Kerala**

**2009-10 to 2014-15**

**Base Year: 2004-05**

**IIP Division**

**Department of Economics and Statistics**

**Government of Kerala**



## Preface

The Index of Industrial Production (IIP) has been the most well-known and well used economic indicator to compare the industrial performance in two different time periods. IIP measures volume changes in production of an economy and therefore provides a measurement that is free of influences of price changes. To measure the growth in the general level of industrial activity in Kerala economy, Department of Economics and Statistics (DES) regularly collects production data from selected industrial units in Kerala and compiles IIP. This report deals with the annual and monthly indices of Kerala for the years 2009-10, 2010-11, 2011-12, 2012-13, 2013-14 and 2014-15 with base year 2004-05.

This report describes the industrial performance in the State with reference to a comparable base year. The base year of the current series of Kerala IIP is 2004-05. It covers Mining and Quarrying, Manufacturing and Electricity sectors in Kerala. The latest series with 2004-05 as base year contains a total of 336 items of manufacturing sector together with 7 items from mining & Quarrying and one for electricity. This report contains two chapters. The fundamental concepts needed to compile IIP and features of Kerala state level IIP are discussed in Chapter 1. Annual and monthly indices at different levels of aggregation are given in chapter 2. Detailed tables are available in the Appendix.

The technical assistance provided by Central Statistical Office, Ministry of Statistics and Programme Implementation, Government of India, and the co-operation extended by the industrial units is acknowledged. The work done by field staff in the district offices, the report writers and all other staff in the directorate who have contributed in diverse way to the preparation of this report are duly acknowledged.

Date:20-04-2017

Thiruvananthapuram

Director General





## Highlights

- The annual IIP for the year 2009-10 with base 2004-05 was 104.4, this increased to 109.1 during 2010-11 then to 129.4 in 2011-12 decrease to 107.9 in 2012-13 and increased to 116.9 in 2013-14 and 131.5 during 2014-15 respectively.
- The industry sector recorded an annual growth of 12.5 percent in 2014-15 over the previous year as the Index of Industrial Production increased from 116.9 in 2013-14 to 131.5 in 2014-15.
- In manufacturing sector index registered a growth of 9.9% in 2010-11 over 2009-10, 18.7% in 2011-12 over 2010-11, 4.2% in 2013-14 over 2012-13 and 14% in 2014-15 over 2013-14.
- The annual Index of industrial production in Kerala registered a significant increase from 100 in 2004-05 (base year) decreased to 12% in 2012-13 over 2011-12, again it showed an increasing trend after 2013-14.



## പ്രസക്ത ഭാഗം

- 2004-05 അടിസ്ഥാന വർഷതാക്കി 2009-10 ലെ വ്യവസായ ഉൽപാദന സൂചിക 104.4 ആണ്. ഇത് 2010-11, 2011-12 എന്നീ വർഷങ്ങളിൽ യഥാക്രമം 109.1, 129.4 ആയി വർദ്ധിച്ചിട്ടുണ്ട്. എന്നാൽ 2012-13 വർഷം സൂചിക 107.9 ആയി താഴുകയും തുടർന്ന് 2013-14, 2014-15 എന്നീ വർഷങ്ങളിൽ യഥാക്രമം 116.9, 131.5 ആയി വർദ്ധിച്ചിട്ടുണ്ട്.
- വ്യവസായ ഉൽപാദന സൂചിക 2013-14 ലെ 116.9 ൽ നിന്നും 2014-15 ലെ 131.5 ആയി വർദ്ധിച്ചതിനാൽ വ്യവസായ മേഖലയിലെ 2014-15 വർഷത്തെ വളർച്ചാനിരക്ക് 12.5 ശതമാനമായി വർദ്ധിച്ചു.
- ഉൽപാദന മേഖലയിലെ സൂചിക 2009-10 ൽ നിന്നും 2010-11 ലേക്ക് 9.9% വളർച്ചാനിരക്കും 2010-11 ൽ നിന്നും 2011-12 ലേക്ക് 18.7% വളർച്ചാനിരക്കും 2012-13 ൽ നിന്നും 2013-14 ലേക്ക് 4.2% വളർച്ചാനിരക്കും 2013-14 ൽ നിന്നും 2014-15 ലേക്ക് 14% വളർച്ചാനിരക്കും രേഖപ്പെടുത്തിയിട്ടുണ്ട്.
- കേരളത്തിലെ വാർഷിക വ്യവസായ ഉൽപാദന സൂചികയുടെ വളർച്ചാസൂചിക 2004-05 ലെ സൂചികയായ 100 നെ അടിസ്ഥാനപ്പെടുത്തി 2011-12 ൽ നിന്നും 2012-13 ലേക്ക് 12% താഴ്ചയും തുടർന്ന് 2012-13 മുതൽ ഉയർച്ചയും രേഖപ്പെടുത്തിയിട്ടുണ്ട്.



## **List of Abbreviations Used in this Report**

IIP	Index of Industrial Production
CSO	Central Statistics Office
DES	Department of Economics and Statistics
UTs	Union Territories
TAC	Technical Advisory Committee
UNSO	Statistical Office of the United Nations
ISIC	International Standard of Industrial Classification
ASI	Annual Survey of Industries
IBM	Indian Bureau of Mines
NIC	National Industrial Classification
GVA	Gross value added
GVO	Gross Value Output



# Contents

Preface

Highlights

List of Abbreviations Used in this Report

## Chapter 1 Introduction

*Introduction*

*Historical Background in India*

*State Participation in Construction of Index of Industrial Production*

*Scope and Coverage*

*Base Year*

*Selection of Item Basket*

*Source of Data*

*Weighting Diagram*

*Compilation Procedure*

## Chapter 2 Index of Industrial Production - Kerala

*Introduction*

*Annual IIP*

*Annual IIP at Sectoral Level*

*Annual IIP at Group Level of Manufacturing Sector*

## Appendix Detailed Tables

*Table 1: General Index of Industrial Production - Month Wise*

*Table 2: Index of Industrial Production Month wise – Sectoral*

*Table 3: Index of Industrial Production Month wise- 2 digit level*

*Table 4: Index of Industrial Production Month wise- 3digit level*





[ Base Year - 2004-05 ]

## **Chapter 1**

# **Introduction**



## **Chapter 1**

# **Introduction**

### **1.1 Introduction**

The Department of Economics and Statistics has been compiling the IIP for Kerala, in accordance with the guidelines of CSO. This chapter details the fundamental concepts needed to compile IIP. Historical background of IIP in India and in Kerala is discussed in the section 1.2 and section 1.3 respectively. Having outlined the scope and coverage of IIP in section 1.4, concepts of base year and selection of item basket were discussed in subsequent two sections. In addition, data sources and weighting diagram of IIP were discussed in section 1.7 and section 1.8 respectively. This chapter concludes with a discussion on compilation procedure of IIP.

### **1.2 Historical Background in India**

Comparison of economic performance over time is a key factor in economic analysis and a fundamental requirement for policy-making. Short-term indicators play an important role in this context by providing such comparison indicators. Among these short-term indicators, the *Index of Industrial Production (IIP)* has historically been one of the most well known and well-used indicators.

In India, the Office of the Economic Advisor, Ministry of Commerce and Industry made the first attempt of compilation and release of Index of Industrial Production, with base year 1937. With the establishment of the Central Statistical Office (CSO) in 1951, the responsibility for compilation and publication of the Index of Industrial Production (IIP)

was vested with CSO. Since then the all India IIP is being released by the CSO as monthly series.

### **1.3 State Participation in Construction of Index of Industrial Production**

The all-India IIP compiled by CSO measures only the macro-level industrial changes. As the structure of industry and its development is unique, the indices compiled at all-India level do not fulfil the requirements of individual states. Hence the need for indices at the state level was keenly felt. In September 1975, a unit of Index of Industrial Production started functioning in DES with the collection of production details for the quarter ending July 1975. Since then the DES has been compiling the Kerala state level IIP, in accordance with the guidelines of CSO.

However, the Indices compiled by State/UTs Governments prior to the series with base year 1993-94 lacked comparability due to differences in the choice of base year, item basket, periodicity for releasing indices, methodology, data sources used etc. The need for compilation of comparable State level IIPs has been felt for quite sometime to facilitate comparative studies on performance of various States/UTs in the industrial sector. With above objective in view, a Technical Advisory Committee (TAC) was constituted by the Government which recommended compilation of State level IIPs with common methodology for selection of item basket and preparation of weighting diagram, etc. To begin with, the TAC recommended to adopt 1993-94 as the base year for compilation of comparable State level IIPs. Accordingly, as like other states Kerala has shifted its base year from 1980-81 to 1993-1994 and from, 1993-1994 to 2004-05 by dropping obsolete items and including the new items in the basket.

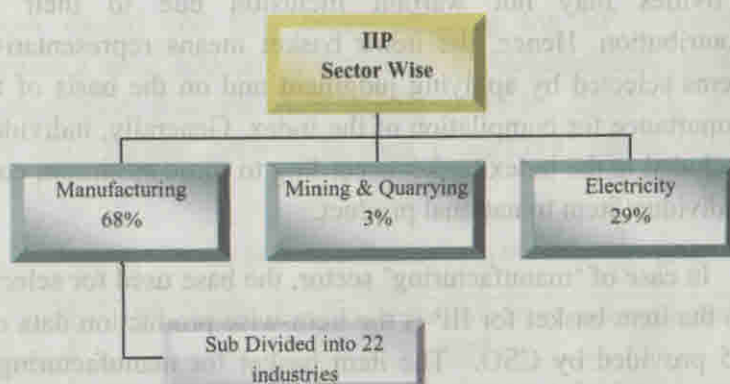
[ Base Year - 2004-05 ]

### 1.4 Scope and Coverage

The IIP compiled in India is an adaptation of the recommendations of the Statistical Office of the United Nations (UNSO). The UNSO recommends that among the major divisions of the International Standard of Industrial Classification (ISIC), 'mining & quarrying', and 'manufacturing', and within the public utilities division, the major groups of 'electricity and gas' be included.

Compilation of IIP in India has been confined to the 'mining & quarrying', 'manufacturing', and 'electricity and gas' sectors. Gas production is included, but distribution of gas & water is not covered in IIP. As there is no production of gas in Kerala, the State level comparable IIP with base 2004-05 cover the three major industrial sectors, viz., 'mining & quarrying', 'manufacturing' (registered) and 'electricity'

**Diagram 1.4.1: Break up of components comprising IIP sector wise**



### 1.5 Base Year

IIP is a summary measure that measures the changes in the volume of industrial production of a representative basket of industrial products during a particular period with respect to a chosen base period. The IIP for the base period is 100 and that for the study period shows the

[ Base Year - 2004-05 ]

percentage increase or decrease over the base period. In order to capture the structural changes taking place in the industrial sector in a more meaningful way, the base year of IIP is periodically revised by updating the item basket and revising the weighting diagram. When the index was commenced in India, the base year adopted was 1937 and this was revised successively to 1946, 1951, 1956, 1960, 1970, 1980-81, 1993-94 and 2004-05.

To maintain synchronization and comparability of Kerala state IIP, it has generally been the practice to revise the base year of Kerala state level IIP, whenever CSO revise the base year of all-India level series. Accordingly, the base year of Kerala state level- IIP is now being revised to the year 2004-05.

### **1.6 Selection of Item Basket**

It is generally not practicable to include all the economic activities that contribute to industrial production, because data for some activities may not be readily and economically available and some economic activities may not warrant inclusion due to their insignificant contribution. Hence, the items basket means representative basket of items selected by applying judgment and on the basis of their relative importance for compilation of the index. Generally, individual items are included in the index basket according to some minimum contribution of individual item to national product.

In case of 'manufacturing' sector, the base used for selection of items in the item basket for IIP is the item-wise production data of ASI 2004-05 provided by CSO. The item basket for manufacturing sector with base year 2004-05 was identified in such a manner that all the items having at least 0.20% contribution in the total output of respective 2-digit categories is selected. A total of 22 NIC 2 digit level item groups were selected for manufacturing sector. Since the number of items in 'mining & quarrying' sector in Kerala is very few, all the mining items in the item basket were covered. The Electricity sector consists of single item, i.e. total electricity generated in Kerala.

[ Base Year - 2004-05 ]

## 1.7 Source of Data

The monthly production data of 'mining & quarrying' and 'electricity' for compiling State level IIP are collected from Indian Bureau of Mines (IBM), Nagpur and Central Electricity Authority respectively. In case of 'manufacturing' sector, after finalisation of item basket (containing selected item groups and items within the group), item wise list of factories along with their production in the base year has been prepared from out of the list of factories surveyed as part of ASI 2004-05. A total of 644 registered manufacturing units were selected for data collection and the department collects monthly production data directly from these units through District Statistical Offices.

### 1.7.1 Data Gaps

In the current series of IIP with base 2004-05, it is observed that many industrial units producing selected items in manufacturing sector have been closed and thus badly affecting the IIP. Number of manufacturing units selected and number of manufacturing units from which production data received during 2009-10, 2010-11, 2011-12, 2012-13, 2013-14 and 2014-15 in each 2 digit NIC group is given in Table 1.7.1.1.

**Table 1.7.1.1 Details of Data Collected from Manufacturing Sector**

NIC - 2 dgt	No. of Factories selected	No. of Manufacturing units from which production data received					
		2009-10	2010-11	2011-12	2012-13	2013-14	2014-15
15	121	84	67	67	72	75	76
16	4	3	3	3	3	3	3
17	51	19	31	32	30	32	30
18	4	Nil	Nil	1	1	1	1
19	12	7	3	7	5	6	7
20	52	24	26	27	24	23	24
21	18	9	9	9	6	5	6
22	16	9	7	7	6	7	7
23	18	13	11	12	11	10	11
24	43	29	31	34	32	27	26

[ Base Year - 2004-05 ]

25	38	20	34	24	26	25	24
26	90	29	33	38	33	33	36
27	19	10	14	13	12	11	12
28	28	11	12	17	11	12	12
29	34	12	14	17	14	16	15
30	8	4	5	5	4	4	4
31	33	12	12	15	11	10	12
32	19	7	8	7	11	11	12
33	10	2	4	3	4	4	4
34	6	3	2	3	4	4	4
35	5	2	1	2	2	2	2
36	15	5	4	4	9	11	11
Total	644	314	331	347	331	332	339

No data were obtained from the 2 digit NIC group 18 during 2009-10 and 2010-11. Thus some industries were unrepresentative due to non-reporting of selected units. The index in this report is, therefore compiled on a low response rate in respect of production data from manufacturing units.

### 1.8 Weighting Diagram

The relative importance of various economic activities is different and these differentials need to be reflected while measuring the performance of the entire industrial sector. With a view to achieving this, each item included in the item basket is given appropriate weight. Weight is generally determined on the basis of the gross value added (GVA) from that industrial activity.

Total weight, which is taken as 1000, was apportioned first to three industrial sectors, i.e., Manufacturing, Mining & Quarrying and Electricity. The sectoral weight of manufacturing sector was then allocated to its 2, 3 & 4 digit industry groups in proportion to their GVA figures. Finally the weight allocation at item level has been done in proportion to item-wise GVA. In case of mining & quarrying sector the total weight of the sector was apportioned to the items included in the item basket in proportion to their value of output furnished by IBM.



[ Base Year - 2004-05 ]

### 1.9 Compilation Procedure

IIP is generally computed as the weighted average of production relatives of all the industrial activities. Here, Laspeyre's fixed-base formula is used for the calculation of the index, which can be expressed mathematically as follows:

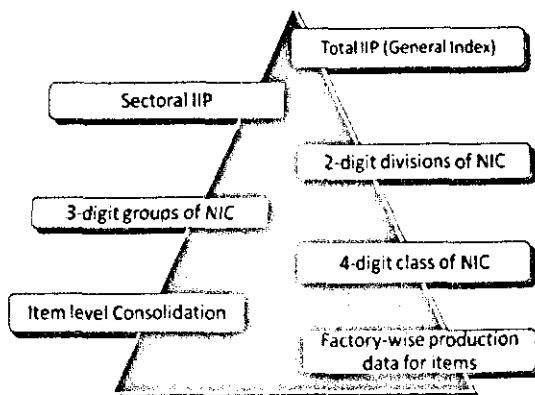
$$I = \frac{\sum W_i R_i}{\sum W_i} \quad i = 1, 2, \dots, N$$

Where  $I$  is the index,  $R_i$  is the production relative of the  $i^{\text{th}}$  item and  $W_i$  is the weight allotted to it.

#### 1.9.1 Building IIP from the Lowest Stage

The compilation of IIP commences with the collection of basic production data relating to the items. The basic production data are then combined using weights to produce data for the 4-digit class (NIC). The subsequent upper levels, above the 4-digit class, of IIP are constructed by combining the lower levels using weights. Following diagram demonstrate the working steps of IIP compilation.

Diagram 1.9.1: Different steps in compilation of IIP





[ Base Year - 2004-05 ]

## **Chapter 2**

# **Index of Industrial Production - Kerala**



## Chapter 2

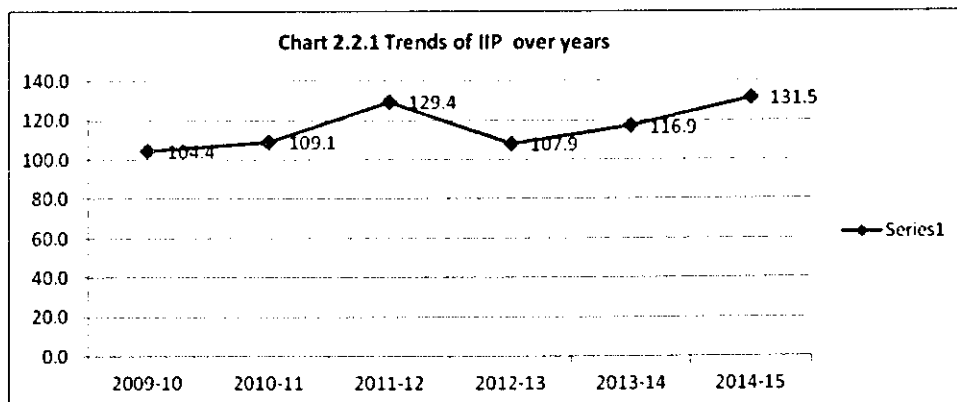
### Index of Industrial Production – Kerala

#### 2.1 Introduction

Index of Industrial Production is a statistical instrument which measures changes over time in the volume of production in various sectors of industry. This chapter compress four sections, dealing with comparable state level indices compiled at different aggregate levels for the years form 2009-10 to 2014-15. The section 2.2 aims at providing general Index of industrial production and its trends over the study periods in Kerala. Sector level indices useful in measuring performance of various sectors of industry are provided in section 2.3. In Kerala, the IIP being compiled with 22 two digit industry groups of manufacturing sector. Indices of these two digit industry groups were compiled and are presented in section 2.4.

#### 2.2 Annual IIP

This section presents the State annual indices of Industrial Production for the years 2009-10 to 2014-15 with base year 2004-05. The General Index of Industrial Production for the series with base year 2004-05 is as in Chart 2.2.1.



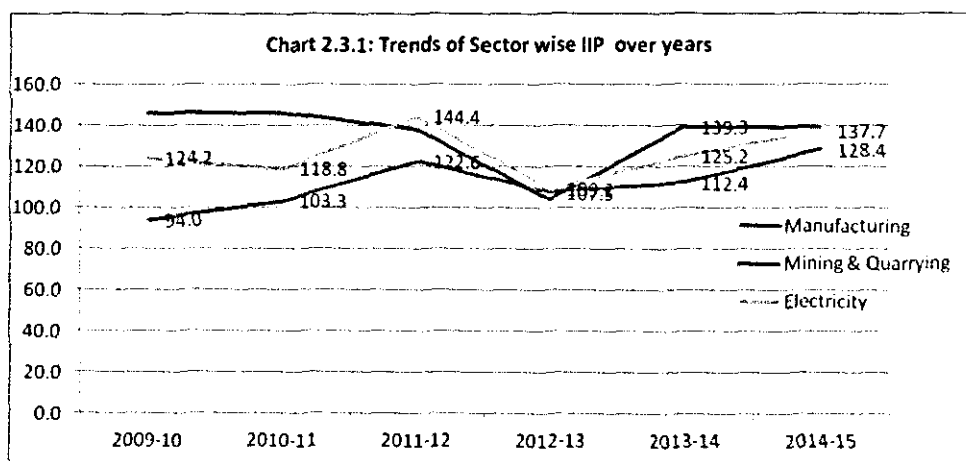
The general Index of industrial production in Kerala registered a significant increase from 100 in 2004-05 (base year) to 104.4 in 2009-10, again it showed an increasing trend still 2011-12 and decreased to 107.9 in 2012-13. The industry sector recorded an annual growth of 12.5 percent in 2014-15 over the previous year as the

[ Base Year – 2004-05 ]

Index of Industrial Production increased from 116.9 in 2013-14 to 131.5 in 2014-15. The monthly index for these years is presented in Table 1 of Appendix A.

### 2.3 Annual IIP at Sector Level

Three major industrial sectors covered in the current series of IIP are Mining & Quarrying, Manufacturing and Electricity. The weightage of Manufacturing, Mining & Quarrying and Electricity production in overall Index of Industrial Production (IIP) is 68 %, 3 % and 29 % respectively. The source of data in each sector and the data gap in compiling IIP were explained in Chapter 1. This section provide the sectoral level indices compiled for the years from 2009-10 to 2014-15, based on the data collected for these periods. The Chart 2.3.1 presents trend of sector wise IIP over these periods.



From the year 2009-10 to 2011-12, index of manufacturing sector showed increased and decreased in 2012-13 then the index increase still 2014-15. During 2009-10 index of manufacturing sector was 94. This increased to 103.3 to 122.6 and decreased to 107.9 in 2010-11, 2011-12 and 2012-13. Again increased to 112.4 and 128.4 during 2013-14 and 2014-15 respectively. Thus in manufacturing sector index registered a growth of 9.9% in 2010-11 over 2009-10, 18.7% in 2011-12 over 2010-11, -12% in 2012-13 over 2011-12, 4.2% in 2013-14 over 2012-13 and 14% in 2014-15 over 2013-14. To study the changes in production between month-to-month of

[ Base Year - 2004-05 ]

manufacturing sector, the month wise indices was compiled and is presented in Table 2 of Appendix.

Compared to manufacturing sector, the electricity sector in State showed a different trend. The Index of Electricity Sector registered a significant increase from 124.2 in 2009-10 and decreased to 118.8 in 2010-11. Again increased to 144.4 in 2011-12 and decreased to 109.2 in 2012-13 and increased to 125.2, 137.7 during 2013-14 and 2014-15 respectively.

From Chart 2.3.1, we can see that the production of mining and quarrying sector had no change for the first two years as 146.1 in 2009-10 and 146.1 in 2010-11 and then decreased during 2011-12 and 2012-13 then increased in 2013-14 and 2014-15 over 2012-13. To have a detailed study on the changes in production over different months, monthly indices were presented in Table 2 of Appendix.

#### **2.4 Annual IIP at Group Level of Manufacturing Sector**

In Kerala, the IIP being compiled with 22 two digit industry groups of manufacturing sector. Out of the 22 industry groups in the manufacturing sector, Nine industry groups namely; 24- Chemicals and Chemical Fertilizers, 25- Rubber and Plastic Products, 28- Fabricated metal products, 30- Office, accounting and computing machinery, 31- Electrical machinery and parts, 32 - radio, television, 33 - medical, precision and optical, 34 - motor vehicles, trailers, and 36- Furniture, Manufacturing n.e.c had index greater than 100 during 2009-10, as be seen in the Table-2.4.1. A positive growth was recorded in the number of manufacturing groups with annual index greater than 100. During 2010-11 this was Eleven out of twenty two groups these industry groups namely; 19- Tanning & Dressing of Leather and Products, 23- Refined Petroleum, 25- Rubber and Plastic Products, 28- Fabricated metal products, 30- Office, accounting and computing machinery, 31- Electrical machinery and parts, 32 - radio, television, 33 - medical, precision and optical, 35 - Other transport equipment, trailers, and 36- Furniture, Manufacturing n.e.c greater than 100. This is to 10, 13, 9 and 13 during 2011-12, 2012-13, 2013-14 and 2014-15 respectively. To have a month to month comparison in the indices of manufacturing sector at group level, monthly indices of twenty two different groups of manufacturing sector were compiled and presented in Table 3 of Appendix.

[ Base Year - 2004-05 ]

**Table 2.4.1: NIC 2 digit level indices for manufacturing sector**

NIC 2 digit (As per NIC 2004)		2009-10	2010-11	2011-12	2012-13	2013-14	2014-15
Code	Description						
15	Food Products & Beverages	65.1	56.2	246.9	134.3	143.5	156.1
16	Tobacco Products	7.8	6.7	6.9	6.7	6.1	5.8
17	Textiles	48.3	63.4	53.6	65.6	67.7	73.8
18	Wearing Apparel, Dressing	*	*	214.8	175.6	212.1	259.2
19	Tanning & Dressing of Leather and Products	37.1	108.4	172.5	62.2	68.4	211.4
20	Wood & Products	76.3	78	75.9	103.2	99.9	84.3
21	Paper & Paper Products	75.5	81.7	81.4	75.9	74.7	67.2
22	Publishing, Printing and Reproduction of Media	65.4	50.4	51.0	58.2	74.3	236.4
23	Coke, Refined Petroleum	97.7	101.5	107.7	113.1	118.0	120.0
24	Chemicals and Chemical Fertilizers	104.6	91.4	95.3	116.4	117.6	118.8
25	Rubber and Plastic Products	101.2	173.6	73.7	68.8	73.1	76.2
26	Other non-metallic minerals	91.2	91.9	85.4	61.3	64.5	103.3
27	Basic Metals	78.5	81.2	67.1	73.5	67.7	70.5
28	Fabricated metal products	142.9	135.3	113.4	105.2	82.2	80.5
29	Machinery and equipment	56.6	74.1	180.3	131.4	143.3	102.5
30	Office, accounting and computing machinery	250.4	246.8	72.5	115.1	86.1	44.7
31	Electrical machinery and parts	188.9	196.2	277.2	164.7	146.1	93.7
32	Radio, television	230.6	304.7	180.5	226.1	233.9	279.9
33	Medical, Precision and optical	107.1	108.5	167.7	138.5	172.6	232.1
34	Motor vehicles, trailers	110.5	85.2	96.3	109.4	75.6	58.6
35	Other transport equipment	64.7	137.2	22.8	22.8	16.2	125.4
36	Furniture, Manufacturing n.e.c (not elsewhere classified)	170.2	123.7	83.2	72.2	96.6	121.9
Manufacturing		93.9	103.3	122.6	107.5	112.4	128.4

\* Could not compile index due to non-response from selected units



[ Base Year – 2004-05 ]

# **Appendix**

## **Detailed Tables**



**Table 1: General Index of Industrial Production - Month wise**

<b>Month</b>	<b>2009-10</b>	<b>2010-11</b>	<b>2011-12</b>	<b>2012-13</b>	<b>2013-14</b>	<b>2014-15</b>
April	88.5	103.7	134.6	108.8	110.9	130.6
May	97.1	108.6	134.7	115.5	98.7	127.3
June	95.6	110.8	121.9	106.4	98.5	119.1
July	98.6	109.4	123.2	106.9	116.7	138.9
August	102.1	105.9	123.2	110.7	134.4	139.7
September	97.1	109.5	126.5	113.8	140.2	124.6
October	107.9	108.2	134.1	103.9	134.3	135.8
November	109.7	107.8	124.9	100.0	118.0	124.0
December	109.0	113.2	124.4	107.3	116.9	119.2
January	114.0	113.8	128.7	102.9	113.4	142.2
February	111.2	104.5	126.0	107.5	99.2	136.8
March	121.5	114.0	150.7	126.6	122.2	150.7
General	104.4	109.1	129.4	107.9	116.9	131.5

**Table 2: Index of Industrial Production Month Wise- Sectoral**

Year	Sector	Weight	April	May	June	July	August	September	October	November	December	January	February	March
2009-10	Manufacturing	677.6	70.8	83.5	81.2	85.7	90.8	83.5	98.8	103.1	100.2	108.4	103.7	118.2
	Mining & Quarrying	30.3	140.8	140.8	140.8	140.8	140.8	140.8	154.9	117.4	158.0	140.8	154.9	171.9
	Electricity	292.0	124.2	124.2	124.2	124.2	124.2	124.2	124.2	124.2	124.2	124.2	124.2	124.2
2010-11	Manufacturing	677.6	95.5	102.7	106.0	104.0	98.8	104.1	101.6	102.6	108.8	110.4	96.0	109.3
	Mining & Quarrying	30.3	140.8	140.8	140.8	140.8	140.8	140.8	154.9	117.4	158.0	140.8	154.9	171.9
	Electricity	292.0	118.8	118.8	118.8	118.8	118.8	118.8	118.8	118.8	118.8	118.8	118.8	118.8
2011-12	Manufacturing	677.6	113.1	117.9	120.0	126.7	123.5	116.9	123.7	125.7	128.0	121.4	122.8	131.3
	Mining & Quarrying	30.3	122.2	163.5	124.1	161.3	205.4	130.6	151.3	147.6	133.8	111.8	102.2	108.6
	Electricity	292.0	185.9	170.8	126.2	111.3	114.0	148.5	156.6	120.8	115.1	147.5	135.9	200.0
2012-13	Manufacturing	677.6	104.9	111.3	111.6	114.3	109.5	108.4	104.6	105.2	105.7	105.1	101.1	108.7
	Mining & Quarrying	30.3	73.4	104.1	113.0	102.5	93.0	83.6	112.7	78.3	95.7	92.3	109.2	192.9
	Electricity	292.0	121.6	126.4	93.8	90.1	115.1	129.5	101.3	90.1	112.2	98.7	122.1	161.0
2013-14	Manufacturing	677.6	96.8	103.4	106.0	113.2	111.5	121.6	113.8	112.9	116.5	120.4	113.4	119.3
	Mining & Quarrying	30.3	228.9	121.2	80.7	100.6	136.5	106.9	154.5	154.9	181.8	192.1	89.9	124.2
	Electricity	292.0	131.3	85.3	82.7	126.5	187.5	187.0	179.8	126.0	110.9	89.2	67.1	128.8
2014-15	Manufacturing	677.6	109.9	122.7	120.3	137.7	142.5	123.3	127.8	123.1	128.8	133.6	131.6	139.4
	Mining & Quarrying	30.3	72.8	89.1	157.8	158.7	140.2	153.3	145.0	123.6	194.4	146.4	146.6	146.6
	Electricity	292.0	184.7	142.0	112.4	139.6	133.2	124.7	153.4	126.2	89.2	161.7	147.9	177.4

**Table 3 Index of Industrial Production Monthwise-2 Digit level year 2009-10**

NIC 2 Digit	Weight	April	May	June	July	August	September	October	November	December	January	February	March
15	110.48	56.2	67.8	56.9	70.5	59.7	64.2	68.7	66.9	69.5	67.4	63.7	70.6
16	8.94	7.9	7.9	8.1	8.3	7.7	7.8	7.9	7.7	8.0	8.0	7.5	7.3
17	39.66	41.0	64.0	42.5	39.3	55.1	46.2	65.6	38.7	40.2	57.8	37.1	52.9
19	0.88	30.5	36.0	37.6	38.1	44.5	25.8	35.7	25.1	36.3	33.4	37.1	64.6
20	4.77	69.5	84.2	60.9	76.5	83.9	60.2	68.9	59.0	100.3	73.8	82.4	97.0
21	13.35	32.0	67.4	81.8	82.2	79.5	72.4	79.9	83.7	78.4	85.2	79.0	85.0
22	31.15	65.7	69.0	67.4	68.3	68.2	63.2	62.4	63.6	64.2	64.7	64.4	64.1
23	198.63	71.5	69.6	73.5	75.0	74.8	74.7	108.6	107.9	113.9	135.0	134.3	134.5
24	91.42	79.7	100.7	105.5	111.0	116.2	105.3	94.5	96.8	109.7	117.7	97.7	121.0
25	59.33	81.0	91.6	96.3	104.9	106.0	83.7	99.4	107.5	109.8	113.5	102.6	118.7
26	31.24	94.2	94.7	97.7	88.0	101.3	77.8	99.4	94.0	94.4	89.5	88.2	75.2
27	10.84	65.2	81.7	75.8	86.2	75.7	82.4	78.1	79.3	81.0	82.7	70.7	83.6
28	5.25	93.8	176.4	141.0	132.7	162.0	129.4	120.1	113.7	123.8	111.7	123.9	287.0
29	10.20	31.4	38.0	36.1	41.5	41.9	40.2	47.1	64.4	46.9	96.0	94.9	101.8
30	1.30	319.5	313.0	75.5	123.8	20.7	419.2	86.0	347.5	409.0	51.7	417.8	422.2
31	9.32	108.0	98.3	143.7	165.3	488.6	131.7	146.5	165.5	188.6	213.2	197.2	220.5
32	30.67	115.7	203.9	169.6	192.9	194.1	221.2	276.8	387.9	208.3	217.5	224.7	355.2
33	5.43	124.0	112.6	108.1	120.6	90.3	108.0	123.2	70.0	99.4	71.4	117.5	140.6
34	0.11	90.3	76.8	147.8	90.3	82.8	145.9	96.9	145.9	88.8	82.2	139.7	139.5
35	11.60	64.1	54.6	67.7	46.7	75.6	60.2	72.6	67.7	72.2	58.3	63.3	74.5
36	3.06	31.9	167.9	167.1	39.0	38.6	202.6	220.3	218.7	267.6	244.8	224.7	219.5

**Table 3 Index of Industrial Production Monthwise-2 Digit level year 2012-13**

NIC 2 Digit	Weight	April	May	June	July	August	September	October	November	December	January	February	March
15	109.69	141.3	140.0	138.3	135.9	138.6	132.4	135.3	124.5	130.3	129.0	130.3	135.8
16	8.87	5.9	5.9	7.3	6.9	6.6	6.9	7.0	7.0	7.0	7.2	6.1	6.6
17	39.38	55.1	59.7	72.8	66.5	65.4	73.3	67.8	67.4	67.6	63.1	59.1	69.5
18	4.82	167.7	114.3	156.0	190.1	132.7	91.0	228.1	219.2	190.0	148.6	244.6	225.0
19	0.88	97.3	76.9	79.6	71.8	62.6	58.3	50.4	51.8	31.9	55.6	52.1	57.8
20	4.73	71.4	104.7	115.5	123.2	98.6	99.1	115.7	115.0	97.1	83.4	108.5	106.7
21	13.26	73.8	76.7	75.3	75.7	80.6	53.3	82.4	78.7	84.7	81.5	63.2	84.9
22	30.93	47.2	51.2	57.9	57.2	54.0	56.7	53.6	63.9	62.0	67.8	61.0	66.3
23	197.22	116.3	114.9	114.4	121.5	125.9	125.3	94.0	94.1	93.6	118.2	119.9	119.4
24	90.77	100.6	119.1	114.8	144.7	129.6	111.2	127.9	132.3	131.4	95.7	88.4	100.6
25	58.91	65.0	76.7	78.2	80.9	71.7	75.0	73.6	71.9	69.9	59.7	48.8	54.2
26	31.01	54.7	71.9	61.1	60.7	59.0	55.2	58.1	55.7	63.1	63.0	60.7	72.3
27	10.77	62.8	76.9	75.6	83.3	76.6	78.2	74.9	78.1	74.2	70.8	63.8	67.1
28	5.22	101.5	108.1	110.9	105.1	102.4	107.1	100.6	104.7	103.6	108.2	103.1	106.9
29	10.12	104.8	115.2	142.3	159.8	114.6	141.5	134.2	140.3	142.7	125.6	103.1	152.8
30	1.29	19.0	51.3	61.7	56.2	128.6	65.9	30.0	153.5	190.4	233.8	82.6	307.8
31	9.26	149.6	183.2	155.5	158.1	187.3	152.1	170.7	156.0	168.1	148.7	149.5	197.8
32	30.46	247.5	272.1	271.8	195.6	142.7	198.8	235.6	253.6	245.9	225.5	199.6	224.7
33	5.39	98.5	131.3	145.5	138.0	116.1	150.4	135.1	137.3	155.3	144.3	157.4	153.3
34	0.11	61.4	35.1	182.7	209.7	86.3	88.5	132.7	83.2	104.3	59.2	110.3	159.3
35	11.52	14.1	14.1	14.9	16.6	15.1	15.8	16.6	50.4	50.4	50.4	4.7	9.8
36	3.04	65.9	73.8	84.2	82.6	85.3	85.8	50.8	63.1	67.0	70.9	65.0	71.8

**Table 3 Index of Industrial Production Monthwise-2 Digit level year 2013-14**

NIC 2 Digit	Weight	April	May	June	July	August	September	October	November	December	January	February	March
15	109.69	86.5	126.9	126.0	148.1	132.1	183.9	163.6	161.1	178.1	144.3	136.2	135.4
16	8.87	6.3	6.9	5.7	6.9	6.0	6.2	6.3	5.9	6.0	6.3	5.5	5.0
17	39.38	54.2	60.3	60.9	66.0	67.6	69.3	69.3	69.5	68.2	79.5	70.5	77.5
18	4.82	189.4	126.4	252.1	313.8	210.3	139.0	188.4	227.6	126.9	300.9	215.7	255.1
19	0.88	62.0	76.8	80.0	83.1	59.0	59.2	34.2	53.1	50.0	37.0	125.9	101.2
20	4.73	101.0	86.4	89.5	111.0	111.4	87.9	109.0	105.9	100.5	90.4	94.5	1.1
21	13.26	78.5	82.4	69.6	80.9	68.2	69.9	59.4	80.3	80.6	74.1	71.3	80.6
22	30.93	59.3	64.3	62.6	69.8	64.3	163.5	65.1	72.0	75.9	55.0	66.9	73.4
23	197.22	117.1	117.1	117.1	122.2	122.2	122.3	102.9	103.1	102.8	130.1	129.5	129.7
24	90.77	103.1	81.5	113.7	124.3	130.6	105.3	130.0	120.4	132.0	132.3	121.8	115.6
25	58.91	56.6	58.3	58.4	62.6	64.8	79.5	88.4	87.5	81.2	78.1	74.2	87.4
26	31.01	66.9	72.8	54.3	61.7	65.2	58.4	65.0	57.4	69.4	68.3	60.6	74.3
27	10.77	66.2	72.4	66.8	69.4	64.6	64.5	71.4	71.3	68.4	62.3	67.6	67.1
28	5.22	118.5	123.0	123.6	70.0	71.9	64.9	60.0	61.4	72.7	77.3	68.8	73.8
29	10.11	107.6	134.1	128.4	143.3	147.3	141.4	144.0	162.4	167.7	134.3	113.8	195.2
30	1.29	33.7	46.8	56.4	50.0	68.1	122.8	72.0	22.9	58.4	184.8	40.9	276.1
31	9.26	120.0	167.6	117.2	121.4	127.7	165.3	157.8	152.5	163.9	174.3	138.5	146.9
32	30.46	224.6	252.0	244.7	208.4	230.8	215.4	233.6	236.1	232.1	254.4	220.1	254.4
33	5.39	184.5	182.3	176.6	138.0	141.9	135.5	171.2	197.0	189.3	194.4	163.5	196.5
34	0.11	59.7	83.9	86.1	34.7	85.7	60.3	42.8	114.8	115.6	67.8	64.9	91.1
35	11.52	10.7	10.7	7.3	29.3	10.7	29.3	29.3	12.4	10.7	10.7	12.4	21.4
36	3.04	66.9	65.2	54.8	99.2	102.5	109.1	106.9	102.9	107.2	119.6	116.8	108.1

**Table 3 Index of Industrial Production Monthwise-2 Digit level year 2014-15**

NIC 2 Digit	Weight	April	May	June	July	August	September	October	November	December	January	February	March
15	109.69	85.7	123.5	123.2	146.8	196.9	130.0	175.6	156.0	180.8	185.5	183.4	186.2
16	8.87	5.2	5.3	5.9	6.1	5.9	5.5	6.2	6.0	6.1	6.5	5.6	5.8
17	39.38	63.7	71.0	75.2	75.1	71.8	67.7	69.9	74.1	74.3	82.2	77.2	83.0
18	4.82	150.4	213.0	219.9	226.1	266.0	302.7	252.2	238.7	266.5	332.8	321.1	321.1
19	0.88	166.0	165.5	170.9	156.5	224.5	282.7	304.8	245.3	246.4	212.1	168.0	194.4
20	4.73	93.8	98.4	99.6	83.3	69.2	78.2	75.3	82.0	95.2	68.3	74.3	94.1
21	13.26	69.1	67.0	72.4	78.2	74.7	77.7	54.4	58.9	69.8	61.3	55.6	66.9
22	30.93	203.3	218.0	208.3	293.2	260.8	212.6	231.6	238.6	243.0	245.6	235.3	246.2
23	197.22	109.4	109.4	109.4	131.0	130.8	130.8	112.8	112.8	112.9	126.9	126.9	126.9
24	90.77	141.1	148.2	107.6	133.1	141.3	111.6	117.2	99.1	100.3	90.7	101.7	133.9
25	58.91	65.8	79.9	82.4	84.0	79.3	72.2	74.3	77.3	74.3	76.7	71.2	76.5
26	31.01	104.7	111.7	98.6	110.3	95.2	90.3	106.0	96.6	108.9	101.6	88.7	127.5
27	10.77	55.9	62.5	62.6	63.9	54.9	65.6	76.5	80.7	79.8	82.8	81.7	79.3
28	5.22	81.7	67.8	99.7	98.6	93.4	94.9	79.3	75.2	77.8	60.2	65.9	71.5
29	10.12	84.0	100.9	128.8	141.2	131.6	110.9	84.3	83.7	95.2	84.5	89.2	95.3
30	1.29	64.2	40.2	68.4	35.3	42.6	79.6	40.2	28.3	7.1	47.1	38.7	44.6
31	9.26	84.4	104.0	107.1	85.0	87.8	81.2	79.4	89.6	88.9	97.0	100.8	118.7
32	30.46	233.8	286.7	308.5	302.0	296.9	260.7	282.9	282.8	294.2	294.4	257.7	258.5
33	5.39	158.6	182.6	307.6	249.6	225.6	220.4	221.3	222.0	222.4	257.6	258.8	258.0
34	0.11	66.0	57.8	59.5	41.5	42.6	37.2	60.0	60.2	56.8	57.7	81.6	82.2
35	11.52	118.9	92.8	131.9	158.1	92.8	105.8	105.8	132.0	118.9	145.0	171.1	132.0
36	3.04	116.5	142.0	152.2	114.2	124.8	127.8	114.0	113.7	123.7	128.2	117.3	88.7



**Table 3 Index of Industrial Production Monthwise-3 Digit level year 2009-10**

NIC 3 Digit	Weight	April	May	June	July	August	September	October	November	December	January	February	March
151	16.89	85.6	143.5	80.5	138.4	96.2	153.0	154.5	143.8	142.4	141.6	135.3	148.4
152	7.69	70.8	72.6	63.5	63.9	69.2	65.3	68.1	70.4	73.9	75.2	67.3	74.8
153	8.97	88.7	98.3	89.6	149.6	106.3	98.1	102.1	92.4	119.7	105.7	89.6	128.6
154	68.26	30.0	30.5	32.9	30.7	30.1	27.6	31.9	32.3	30.1	29.9	28.5	28.5
155	8.67	158.9	178.7	160.5	175.0	164.8	143.5	157.5	159.3	181.4	171.5	171.2	187.1
160	8.94	7.9	7.9	8.1	8.3	7.7	7.8	7.9	7.7	8.0	8.0	7.5	7.3
171	25.82	47.6	47.7	49.5	52.2	52.5	49.0	51.0	48.6	50.2	49.6	45.3	54.2
172	13.84	28.6	94.4	29.4	15.2	60.1	41.0	92.7	20.3	21.7	73.2	21.8	50.5
191	0.14	39.9	75.7	82.3	108.1	112.2	38.9	124.7	44.1	93.3	71.9	99.9	294.1
192	0.75	28.8	28.8	29.4	25.3	32.0	23.4	19.4	21.6	25.9	26.4	25.5	22.4
201	1.61	17.8	17.8	18.2	15.7	19.8	14.5	12.0	13.4	16.0	16.3	15.8	13.9
202	3.15	96.0	118.1	82.8	107.6	116.7	83.6	98.1	82.3	143.4	103.3	116.4	139.6
210	13.35	32.0	67.4	81.8	82.2	79.5	72.4	79.9	83.7	78.4	85.2	79.0	85.0
221	27.36	60.2	60.2	60.3	60.3	60.3	56.0	56.0	55.9	55.9	56.4	56.5	55.9
222	3.79	106.0	132.7	119.2	126.1	125.9	115.1	108.6	119.1	123.8	123.9	121.9	123.6
232	198.63	71.5	69.6	73.5	75.0	74.8	74.7	108.6	107.9	113.9	135.0	134.3	134.5
241	49.85	95.1	119.0	139.6	152.2	149.5	131.8	132.3	131.6	151.4	147.6	143.7	180.1
242	41.57	61.4	78.8	64.7	61.7	76.3	73.6	49.1	55.1	59.7	81.9	42.6	50.1
251	53.42	86.4	97.9	103.3	113.0	114.3	89.9	107.1	116.1	118.5	122.2	110.3	127.8
252	5.91	32.5	34.7	33.1	32.1	31.0	27.8	29.2	29.0	31.2	35.2	32.3	36.1
269	31.24	94.2	94.7	97.7	88.0	101.3	77.8	99.4	94.0	94.4	89.5	88.2	75.2
271	6.34	56.8	71.9	56.6	73.4	73.1	68.2	72.9	66.5	66.4	72.9	64.9	74.4
272	3.15	96.4	123.8	132.8	133.1	96.7	131.9	106.8	128.9	129.2	120.9	98.7	122.8
273	1.36	32.0	29.6	33.4	37.0	39.2	34.1	35.5	23.7	37.1	40.0	33.3	35.9
281	0.93	78.0	316.6	102.2	98.8	81.2	69.4	100.6	93.1	92.5	86.3	94.6	87.6
289	4.32	97.2	146.2	149.4	140.0	179.4	142.4	124.3	118.2	130.6	117.2	130.2	330.1
291	2.46	24.0	43.6	30.4	43.6	47.1	55.0	60.2	61.4	62.3	274.2	269.4	278.4
292	7.72	33.8	36.3	38.0	41.0	40.3	35.6	43.0	65.5	42.1	39.4	39.5	45.8
293	0.02	10.2	10.2	10.2	10.2	10.2	10.2	10.2	10.2	10.2	10.2	10.2	10.2
300	1.30	319.5	313.0	75.5	123.8	20.7	419.2	86.0	347.5	409.0	51.7	417.8	422.2
311	6.19	114.4	75.9	145.2	181.6	135.6	123.1	156.1	162.2	198.0	202.3	200.9	258.3
312	2.40	82.7	114.5	96.5	104.2	171.6	122.8	84.1	152.3	138.3	224.7	137.2	136.4
313	0.70	136.9	239.1	295.2	236.0	4741.9	240.5	275.0	242.7	278.8	274.0	367.0	175.0
314	0.04	148.2	149.3	122.2	88.1	165.0	105.7	162.3	114.4	201.9	145.5	282.4	237.4
321	26.22	125.9	176.4	184.2	200.9	186.3	181.6	232.9	230.5	214.9	231.6	234.6	255.8
322	4.45	55.9	365.9	83.8	145.7	240.0	454.3	535.1	1314.9	169.7	134.1	166.2	941.1
331	5.43	124.0	112.6	108.1	120.6	90.3	108.0	123.2	70.0	99.4	71.4	117.5	140.6
342	0.08	14.2	0.0	95.3	14.2	4.7	90.5	23.7	90.5	14.2	4.7	90.5	119.0
343	0.03	294.5	283.1	288.8	294.5	292.2	294.5	293.3	294.5	288.8	289.9	271.8	194.4
359	11.60	64.1	54.6	67.7	46.7	75.6	60.2	72.6	67.7	72.2	58.3	63.3	74.5
361	2.64	21.5	177.1	175.3	27.0	28.5	221.0	244.5	239.5	295.0	263.4	241.1	232.5
369	0.43	96.4	110.7	116.7	113.1	101.2	89.3	71.4	90.5	98.8	129.8	123.8	139.3

**Table 4 Index of Industrial Production Month Wise 3 Digit Level 2010-11**

NIC 3Digit	Weight	April	May	June	July	August	September	October	November	December	January	February	March
151	16.89	68.4	66.5	70.9	65.9	45.0	44.4	51.0	67.8	70.5	59.1	68.1	85.5
152	7.69	54.8	59.4	58.3	60.6	65.3	62.4	63.1	65.6	64.6	68.0	59.3	60.2
153	8.97	158.0	155.8	164.2	169.9	151.4	169.1	174.0	187.8	161.6	210.2	189.0	161.1
154	68.26	21.8	25.0	23.9	24.1	19.8	22.0	23.2	21.6	23.5	21.2	20.0	22.7
155	8.67	170.5	190.1	193.3	186.8	162.1	169.5	171.1	174.4	193.6	184.1	189.9	227.8
160	8.94	6.9	6.5	6.7	7.2	6.8	6.9	6.4	6.5	6.9	6.8	6.9	6.9
171	25.82	71.2	73.8	74.7	75.3	72.4	74.1	72.3	71.0	73.8	69.5	61.5	61.4
172	13.84	45.3	45.7	45.3	47.3	45.4	52.8	49.0	52.2	54.1	55.7	50.7	50.0
191	0.14	627.0	860.4	827.8	641.2	589.3	299.4	468.3	527.2	623.5	543.8	360.4	540.9
192	0.75	21.6	25.4	20.8	21.0	25.4	22.4	19.5	22.1	20.1	24.4	24.5	23.4
201	1.61	106.2	145.8	138.4	155.7	125.4	141.3	143.5	118.7	128.0	168.8	134.9	156.6
202	3.15	49.4	51.6	47.7	48.2	51.1	41.3	47.3	43.8	38.6	49.4	49.8	46.3
210	13.35	75.7	78.5	86.1	84.6	79.1	87.0	73.3	78.8	88.4	87.1	76.4	84.9
221	27.36	40.4	41.9	39.1	42.0	39.7	41.8	45.7	43.3	45.0	45.6	41.6	41.9
222	3.79	89.2	119.9	118.7	122.9	165.9	138.3	120.2	146.8	74.0	57.5	69.6	75.6
232	198.63	105.0	104.0	106.1	102.3	102.2	102.7	97.6	97.3	96.9	100.6	101.6	101.6
241	49.85	83.9	95.4	105.9	106.0	107.7	96.9	101.2	88.6	94.9	100.3	94.3	102.0
242	41.57	69.6	76.6	89.0	83.2	77.5	88.4	90.8	83.7	88.4	85.4	74.4	93.0
251	53.42	123.7	147.4	151.4	161.5	154.5	152.4	154.6	160.6	167.7	164.9	156.6	168.6
252	5.91	257.1	210.8	212.5	231.9	231.4	259.0	209.2	366.0	437.6	497.9	528.6	629.6
269	31.24	94.0	102.8	96.5	94.2	90.2	91.8	81.8	79.9	86.8	91.3	91.2	102.8
271	6.34	64.7	79.9	76.5	83.9	82.1	80.6	92.0	88.6	85.6	76.2	68.1	80.0
272	3.15	117.6	101.9	97.0	106.2	90.9	100.2	69.8	98.4	97.0	108.2	102.5	86.3
273	1.36	33.5	37.7	44.3	53.0	52.0	51.8	55.6	55.1	55.2	47.0	38.9	54.7
281	0.93	122.4	121.1	120.6	136.5	124.3	117.7	118.8	132.6	137.4	129.2	125.5	136.4
289	4.32	111.5	131.1	123.3	140.9	156.5	138.7	144.2	146.4	133.6	128.9	136.1	154.3
291	2.46	46.3	51.6	63.6	67.9	79.5	55.2	93.4	90.2	88.6	336.2	332.1	335.3
292	7.72	57.7	79.9	42.0	46.0	30.0	80.2	33.0	33.4	80.2	81.2	51.1	37.1
293	0.02	7.2	7.2	7.2	7.2	7.2	7.2	7.2	7.2	7.2	7.2	7.2	7.2
300	1.30	223.7	314.0	127.8	310.8	241.1	368.9	186.1	292.0	149.4	288.4	272.1	187.5
311	6.19	96.7	132.0	161.8	187.6	216.4	222.7	184.1	160.8	200.6	188.3	181.8	236.1
312	2.40	87.2	75.4	84.2	96.1	40.4	120.2	167.2	129.9	125.9	120.1	180.6	145.0
313	0.70	1198.0	1479.7	2007.5	861.9	207.1	145.2	230.8	334.5	191.4	250.2	205.3	236.5
314	0.04	237.1	190.2	266.1	247.7	293.0	232.2	346.6	312.7	329.5	286.4	230.1	183.2
321	26.22	296.5	323.0	339.9	337.9	291.5	377.5	396.5	419.3	415.2	383.4	152.7	308.0
322	4.45	20.4	57.0	144.0	131.5	143.1	146.1	134.3	85.9	97.4	78.7	189.0	162.3
331	5.43	72.0	104.2	89.7	82.9	97.8	115.6	107.7	118.0	133.9	123.1	121.2	136.3
342	0.08	90.5	100.0	90.5	95.3	95.3	100.0	104.7	104.7	104.7	109.5	100.0	95.3
343	0.03	47.7	48.2	47.7	49.1	46.8	47.7	48.2	45.0	49.6	50.0	45.5	43.6
351	10.61	171.4	200.0	185.7	114.3	114.3	114.3	71.4	42.9	257.1	271.4	57.1	171.4
359	1.00	26.1	26.1	26.1	26.1	26.1	26.1	26.1	26.1	26.1	26.1	26.1	26.1
361	2.64	109.1	120.5	136.0	138.5	144.1	142.4	145.6	92.3	142.2	152.8	95.5	103.2
369	0.43	86.9	136.9	119.0	117.9	65.5	84.5	84.5	103.6	98.8	100.0	119.0	132.1

**Table 4 Index of Industrial Production Month Wise 3 Digit Level 2011-12**

NIC 3Digit	Weight	April	May	June	July	August	September	October	November	December	January	February	March
151	16.77	229.5	232.2	228.6	224.7	225.2	212.4	219.5	225.3	219.6	209.7	213.5	218.3
152	7.63	60.2	66.0	63.4	65.5	67.8	64.9	64.9	63.7	66.1	65.7	61.2	64.5
153	8.90	132.4	138.7	141.2	138.9	137.3	129.9	132.0	136.0	138.1	140.1	138.5	152.1
154	67.78	302.1	305.6	299.6	294.6	290.2	280.5	287.7	295.7	280.2	271.4	277.2	284.6
155	8.60	223.6	249.5	229.1	194.7	243.7	226.8	221.5	254.0	260.6	224.7	256.2	272.9
160	8.87	5.8	6.5	6.9	7.5	7.7	7.1	6.9	7.2	7.0	6.9	6.1	7.2
171	25.64	49.7	58.7	56.1	54.2	53.0	56.1	56.7	58.4	55.5	61.1	57.0	63.1
172	13.74	28.3	43.4	48.6	42.6	73.5	46.4	47.0	48.1	52.4	50.5	49.8	44.4
181	4.82	144.8	246.3	241.5	191.3	220.6	145.4	288.9	243.5	190.1	262.5	147.3	255.9
191	0.14	412.1	891.0	825.1	1206.6	840.0	995.0	1219.8	1154.3	1162.9	951.4	713.9	1120.2
192	0.74	27.4	31.3	32.6	34.7	35.9	28.6	26.3	24.5	26.5	26.6	22.8	21.5
201	1.60	101.6	117.0	132.3	117.7	130.6	119.9	156.7	170.5	168.0	111.0	157.7	168.4
202	3.13	34.9	41.1	35.7	36.5	47.8	36.0	47.9	46.7	56.5	47.4	45.9	56.1
210	13.26	69.2	78.8	85.1	80.6	84.8	79.6	76.5	81.8	89.4	80.7	78.8	91.2
221	27.17	48.2	45.0	44.4	45.9	43.2	44.1	43.9	43.0	47.3	44.4	43.1	43.3
222	3.76	69.3	77.7	71.4	82.9	59.5	111.6	98.6	83.0	111.6	139.4	135.2	121.2
232	197.22	83.0	79.6	83.0	112.1	111.3	112.5	122.6	122.0	123.0	113.6	112.0	117.7
241	49.49	79.7	70.0	86.2	93.6	90.6	86.3	78.4	81.4	96.5	88.9	74.3	94.5
242	41.28	94.4	108.5	119.3	112.5	106.2	94.2	104.7	100.0	113.0	115.9	112.5	109.9
251	53.04	73.2	76.7	72.4	81.9	79.9	75.4	72.2	81.7	81.3	78.2	74.5	85.5
252	5.87	26.1	37.6	38.9	37.1	37.2	34.7	38.3	39.6	43.6	37.1	36.3	39.7
269	31.01	85.1	89.3	84.3	80.9	80.5	62.7	87.5	83.4	91.6	87.0	88.9	103.4
271	6.29	60.3	55.8	53.3	64.1	57.6	59.9	63.2	63.8	75.8	77.7	72.5	78.8
272	3.12	95.5	96.9	92.2	92.4	78.6	96.0	100.3	91.6	96.2	62.9	32.2	89.2
273	1.35	38.4	28.3	34.5	38.2	34.6	27.8	24.3	30.2	40.1	36.0	39.2	34.9
281	0.93	83.4	95.1	125.8	78.1	80.0	56.1	64.2	65.3	62.8	65.6	67.7	80.7
289	4.29	100.1	102.9	140.4	140.6	139.6	130.6	112.9	117.3	131.2	121.1	97.3	120.8
291	2.44	173.8	152.4	316.9	198.7	152.7	112.7	133.9	157.7	122.6	147.6	103.3	91.0
292	7.66	301.3	196.7	186.0	182.2	171.0	191.7	165.0	169.7	183.0	180.2	161.5	176.6
293	0.02	8.6	10.6	7.9	10.6	10.6	10.6	5.7	5.5	5.6	8.6	8.6	8.6
300	1.29	44.5	61.2	50.6	69.2	47.9	65.0	83.5	79.3	81.4	70.6	71.7	145.1
311	6.14	119.3	121.8	143.7	143.0	120.8	117.7	119.3	136.1	130.8	106.2	556.3	536.6
312	2.39	208.9	337.5	469.7	661.6	412.7	308.8	294.6	384.5	675.0	379.0	364.5	359.8
313	0.69	599.8	569.5	622.3	522.8	398.0	407.4	621.0	476.4	691.7	633.9	623.8	569.5
314	0.04	182.1	234.1	197.0	266.1	206.2	200.3	168.3	268.3	332.0	173.7	193.5	238.2
321	26.04	213.6	280.8	274.8	242.7	205.5	168.7	175.2	190.8	167.4	165.3	171.5	198.8
322	4.42	31.2	52.8	32.0	20.1	33.4	8.3	45.8	48.2	48.1	43.0	44.4	55.8
331	5.39	137.5	200.4	152.2	165.7	194.8	156.2	191.3	161.2	190.1	172.2	152.4	138.0
342	0.08	66.7	66.7	133.3	133.3	133.3	133.3	133.3	100.0	133.3	66.7	66.7	133.3
343	0.03	64.1	72.4	67.1	70.6	72.2	74.5	48.1	77.2	57.1	60.7	47.5	54.7
359	11.52	21.7	25.6	25.5	25.5	17.0	25.3	25.3	4.8	25.3	25.5	30.6	22.3
361	2.62	68.8	90.5	92.3	98.0	83.8	10.9	68.0	83.6	92.2	87.3	78.2	89.4
369	0.42	125.0	129.8	126.2	132.1	106.0	82.1	104.8	131.0	107.1	104.8	81.0	110.7

**Table 4 Index of Industrial Production Month Wise 3 Digit Level 2012-13**

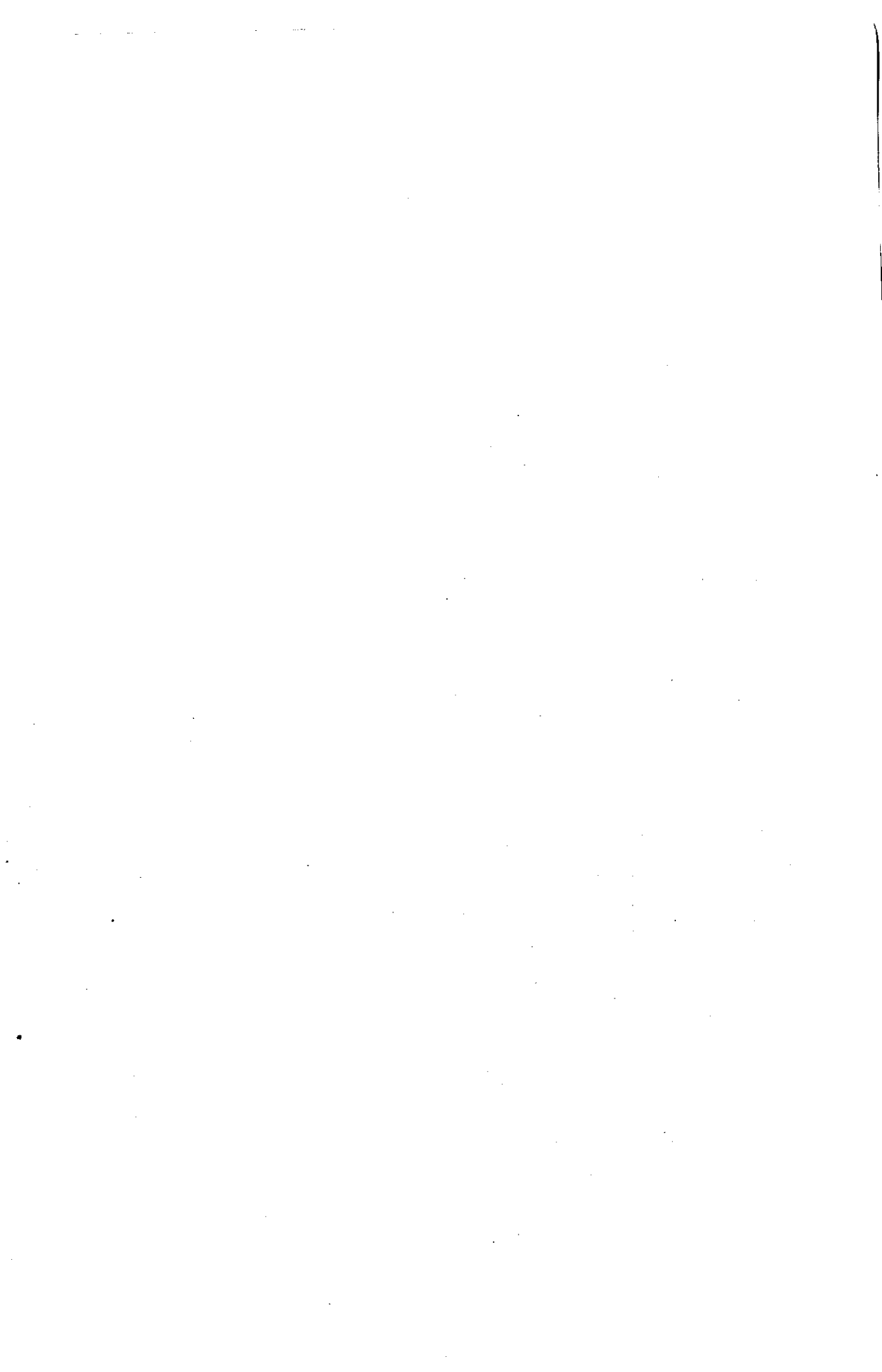
NIC 3Digit	Weight	April	May	June	July	August	September	October	November	December	January	February	March
151	16.8	40.6	35.2	46.2	41.2	61.5	66.8	60.3	57.6	59.0	61.7	56.4	62.8
152	7.6	61.5	64.3	62.4	64.4	64.8	60.7	64.3	63.4	64.1	63.5	58.5	63.1
153	8.9	138.2	145.8	134.0	137.6	134.5	131.9	132.3	133.2	136.2	148.4	123.5	126.9
154	67.8	168.3	167.3	163.4	164.5	164.5	153.6	158.8	141.8	146.9	145.8	152.9	159.6
155	8.6	198.9	190.2	191.9	157.1	154.8	157.3	161.6	164.0	191.5	166.2	167.5	163.9
160	8.9	5.9	5.9	7.3	6.9	6.6	6.9	7.0	7.0	7.0	7.2	6.1	6.6
171	25.6	59.8	62.3	66.1	68.9	59.5	59.2	57.4	57.1	60.3	57.2	49.8	59.6
172	13.7	46.2	54.9	85.4	62.1	76.4	99.5	87.1	86.5	81.1	74.1	76.3	87.8
181	4.8	167.7	114.3	156.0	190.1	132.7	91.0	228.1	219.2	190.0	148.6	244.6	225.0
191	0.1	406.1	272.9	321.5	290.1	243.3	255.2	216.1	205.9	77.2	194.6	216.4	245.8
192	0.7	40.5	40.9	35.2	31.7	29.4	22.1	19.9	23.5	23.5	30.0	21.9	23.3
201	1.6	99.9	177.9	197.0	211.1	173.8	174.6	193.8	202.6	148.7	105.3	113.9	71.1
202	3.1	56.8	67.3	73.8	78.2	60.2	60.4	75.7	70.1	70.7	72.2	105.7	125.0
210	13.3	73.8	76.7	75.3	75.7	80.6	53.3	82.4	78.7	84.7	81.5	63.2	84.9
221	27.2	35.7	39.6	42.5	39.5	42.5	44.5	43.4	44.2	46.1	44.8	42.1	45.0
222	3.8	130.1	134.7	168.9	184.6	137.6	144.3	127.6	205.9	176.5	233.5	197.8	219.8
232	197.2	116.3	114.9	114.4	121.5	125.9	125.3	94.0	94.1	93.6	118.2	119.9	119.4
241	49.5	48.8	57.9	44.2	73.9	65.6	34.4	58.8	64.4	37.5	52.0	35.5	56.6
242	41.3	162.7	192.5	199.5	229.7	206.3	203.2	210.7	213.9	243.9	148.1	151.8	153.3
251	53.0	67.8	80.6	82.5	85.8	75.7	79.0	77.1	75.5	72.9	61.1	49.9	55.3
252	5.9	39.5	41.3	40.0	36.5	35.0	39.4	41.9	39.4	42.9	47.0	39.2	44.4
269	31.0	54.7	71.9	61.1	60.7	59.0	55.2	58.1	55.7	63.1	63.0	60.7	72.3
271	6.3	60.3	78.3	73.0	77.0	70.8	71.6	75.6	79.1	73.8	71.7	64.1	66.8
272	3.1	81.5	90.6	99.5	120.4	110.3	111.1	90.5	94.8	91.6	84.7	77.8	83.8
273	1.3	31.0	38.5	32.5	26.7	25.3	32.9	35.3	34.4	36.3	34.6	29.9	30.3
281	0.9	108.6	145.6	161.4	128.8	113.4	140.1	103.3	126.6	120.3	146.2	117.7	138.8
289	4.3	88.0	80.9	99.5	104.2	100.2	77.5	80.1	85.1	83.7	94.7	82.4	87.6
291	2.4	38.5	61.4	123.2	161.7	76.2	175.1	120.9	129.3	149.1	177.5	99.7	251.3
292	7.7	126.2	132.6	148.7	159.5	127.0	131.1	138.7	144.1	140.9	109.3	104.5	121.8
293	0.0	24.1	24.1	24.1	24.1	24.1	24.1	24.1	24.1	24.1	24.1	24.1	24.1
300	1.3	19.0	51.3	61.7	56.2	128.6	65.9	30.0	153.5	190.4	233.8	82.6	307.8
311	6.1	101.9	121.9	90.5	120.1	126.1	90.9	102.4	95.6	108.4	98.4	85.2	145.6
312	2.4	144.2	167.2	135.8	134.2	168.4	113.6	164.6	119.3	108.6	76.0	95.7	133.5
313	0.7	572.1	773.7	797.2	570.5	801.2	826.2	796.9	811.5	902.3	852.5	908.7	888.2
314	0.0	502.7	346.1	234.1	294.6	117.6	209.2	209.2	308.9	224.4	52.8	118.4	119.5
321	26.0	287.1	317.5	316.5	227.6	162.0	231.6	274.0	295.4	282.6	258.8	230.5	257.8
322	4.4	14.2	4.5	8.6	7.5	28.5	5.6	9.2	7.5	30.0	29.4	17.8	29.5
331	5.4	98.5	131.3	145.5	138.0	116.1	150.4	135.1	137.3	155.3	144.3	157.4	153.3
342	0.1	66.7	33.3	233.3	266.7	100.0	100.0	166.7	100.0	133.3	66.7	133.3	200.0
343	0.0	47.4	40.0	46.6	56.9	49.5	57.5	41.6	38.1	26.4	39.3	48.5	49.9
359	11.5	14.1	14.1	14.9	16.6	15.1	15.8	16.6	50.4	50.4	50.4	4.7	9.8
361	2.6	55.9	66.3	78.0	75.9	81.2	83.5	47.5	57.3	62.3	66.0	61.4	67.0
369	0.4	127.4	120.2	122.6	123.8	110.7	100.0	71.4	98.8	96.4	101.2	86.9	101.2

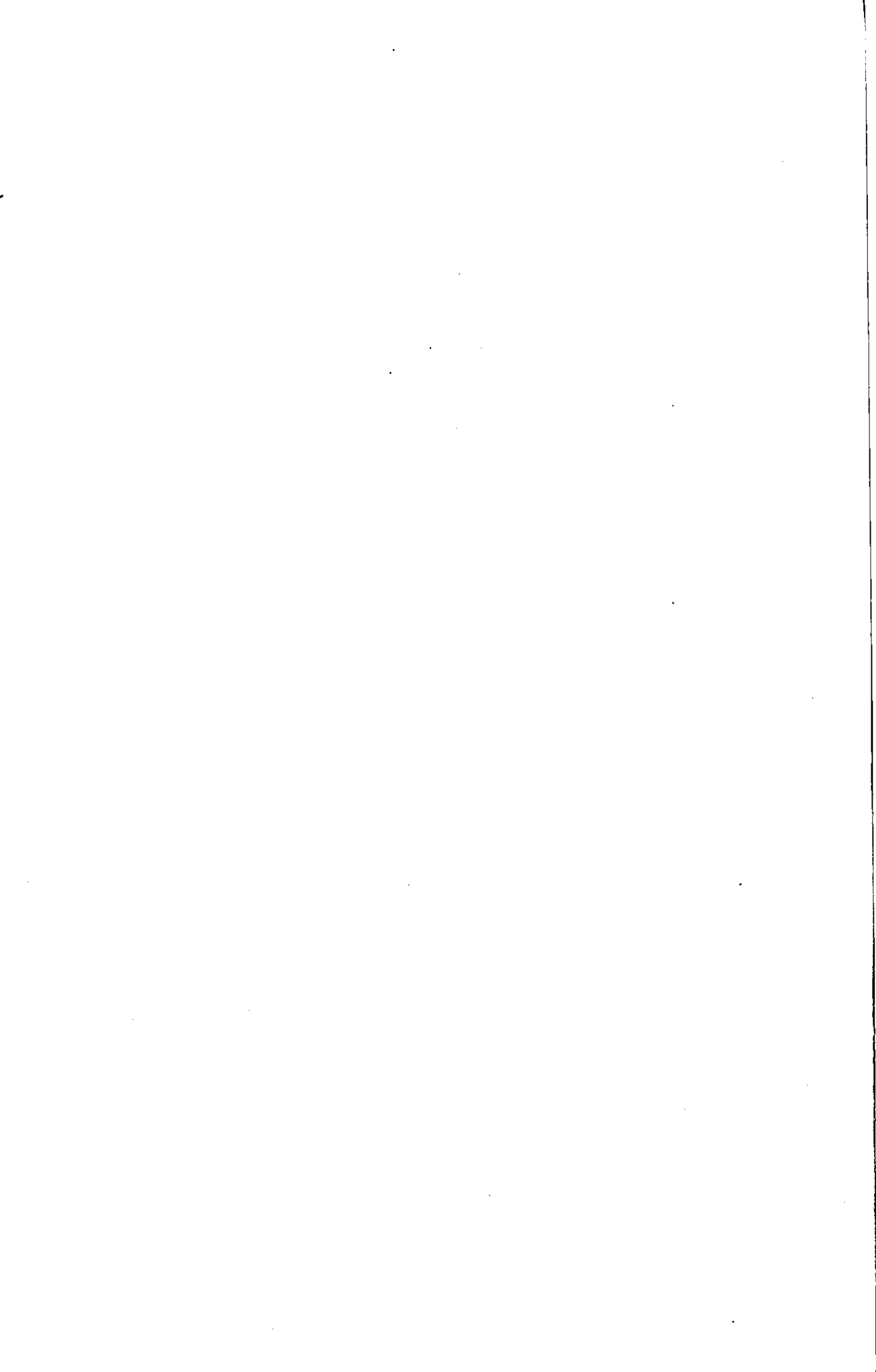
**Table 4 Index of Industrial Production Month Wise 3 Digit Level 2013-14**

NIC 3Digit	Weight	April	May	June	July	August	September	October	November	December	January	February	March
151	16.77	57.5	64.8	61.4	66.1	38.5	53.3	63.6	59.3	54.7	57.5	43.3	57.9
152	7.63	66.6	68.2	65.0	67.2	68.4	75.7	68.7	62.1	58.5	69.2	64.1	67.3
153	8.90	129.9	123.6	125.4	130.2	130.4	128.5	130.3	121.8	126.8	132.3	118.9	118.3
154	67.78	77.2	140.9	142.4	183.1	160.5	237.2	202.1	201.8	230.4	173.0	166.3	161.8
155	8.60	188.1	192.8	176.8	123.6	148.8	171.6	174.1	167.5	165.3	166.9	161.4	157.4
160	8.87	6.3	6.9	5.7	6.9	6.0	6.2	6.3	5.9	6.0	6.3	5.5	5.0
171	25.64	56.2	59.9	67.4	72.2	74.9	70.2	73.7	70.4	69.1	73.7	69.7	77.1
172	13.74	50.5	60.9	48.8	54.3	54.0	67.6	61.2	67.8	66.6	90.1	71.9	78.2
181	4.82	189.4	126.4	252.1	313.8	210.3	139.0	188.4	227.6	126.9	300.9	215.7	255.1
191	0.14	251.5	309.9	338.4	345.6	213.6	230.9	56.0	205.1	176.7	79.7	645.2	531.7
192	0.74	27.2	33.9	32.5	34.8	30.6	27.7	30.1	25.1	26.7	29.2	30.5	22.1
201	1.60	120.3	115.0	85.5	135.0	161.7	110.4	144.0	118.9	101.1	116.8	93.2	109.9
202	3.13	91.1	71.8	91.5	98.7	85.6	76.4	91.1	99.2	100.1	76.8	95.1	111.6
210	13.26	78.5	82.4	69.6	80.9	68.2	69.9	59.4	80.3	80.6	74.1	71.3	80.6
221	27.17	42.6	45.1	44.2	43.4	46.5	45.6	45.5	48.1	45.1	46.2	42.8	44.5
222	3.76	179.8	203.2	195.1	260.8	192.8	1014.3	206.7	244.3	298.5	118.4	240.5	282.5
232	197.22	117.1	117.1	117.1	122.2	122.2	122.3	102.9	103.1	102.8	130.1	129.5	129.7
241	49.49	86.3	54.5	90.7	103.8	97.7	86.8	77.3	76.7	97.6	101.2	96.4	102.3
242	41.28	123.3	113.9	141.3	148.9	170.1	127.5	193.2	172.8	173.3	169.6	152.3	131.5
251	53.04	57.9	60.3	61.0	65.7	67.8	84.7	94.0	93.1	86.3	82.1	77.9	92.2
252	5.87	45.0	40.5	35.3	34.8	37.5	33.1	37.9	36.7	34.9	42.4	40.9	44.3
269	31.01	66.9	72.8	54.3	61.7	65.2	58.4	65.0	57.4	69.4	68.3	60.6	74.3
271	6.29	64.4	71.5	63.0	66.8	63.7	74.9	77.3	66.8	70.7	69.2	69.2	64.9
272	3.12	84.7	92.1	88.4	90.8	81.0	56.7	76.8	98.0	79.5	61.3	80.6	85.9
273	1.35	31.3	30.6	34.7	32.2	31.0	33.6	31.4	30.0	31.7	32.6	30.2	33.4
281	0.93	134.5	129.2	117.8	83.0	96.6	52.4	102.7	98.5	81.8	106.2	116.1	110.8
289	4.29	115.1	121.7	124.8	67.2	66.6	67.5	50.8	53.3	70.7	71.1	58.6	65.8
291	2.44	107.5	131.6	132.7	96.1	138.4	151.3	141.6	166.6	174.7	103.4	47.0	242.9
292	7.66	107.6	135.0	127.1	158.3	150.2	138.3	144.8	161.1	165.5	144.2	135.1	180.1
293	0.00	25.9	25.9	25.9	25.9	25.9	25.9	25.9	25.9	25.9	25.9	25.9	25.9
300	1.29	33.7	46.8	56.4	50.0	68.1	122.8	72.0	22.9	58.4	184.8	40.9	276.1
311	5.67	69.3	72.4	68.7	94.4	108.1	111.6	112.6	122.0	148.2	133.4	91.9	120.0
312	2.20	109.4	154.5	108.8	119.2	112.2	100.7	133.3	88.0	64.3	102.0	103.7	121.7
313	0.64	650.3	1157.0	618.0	412.6	408.7	964.7	736.4	732.6	744.2	896.6	742.1	551.7
314	0.04	151.8	165.6	121.1	170.2	138.8	106.8	64.8	76.7	126.6	123.0	85.1	69.9
319	0.71	80.0	80.0	80.0	80.0	80.0	80.0	80.0	80.0	80.0	80.0	80.0	80.0
321	26.04	260.6	290.3	283.0	239.5	266.4	248.0	269.3	271.3	266.7	295.1	255.1	295.3
322	4.42	12.7	25.9	18.9	25.1	21.2	23.2	23.0	28.4	28.6	15.0	13.7	13.1
331	5.39	184.5	182.3	176.6	138.0	141.9	135.5	171.2	197.0	189.3	194.4	163.5	196.5
342	0.08	66.7	100.0	100.0	33.3	100.0	66.7	33.3	133.3	133.3	66.7	66.7	100.0
343	0.03	41.1	40.8	48.9	38.4	47.3	43.1	68.1	64.9	67.9	70.9	60.1	67.2
359	11.52	10.7	10.7	7.3	29.3	10.7	29.3	29.3	12.4	10.7	10.7	12.4	21.4
361	2.62	59.8	56.1	48.3	98.3	104.2	113.3	112.1	104.4	109.9	123.2	122.0	109.3
369	0.42	110.7	121.4	95.2	104.8	91.7	83.3	75.0	94.0	90.5	97.6	84.5	101.2

**Table 4 Index of Industrial Production Month Wise 3 Digit Level 2014-15**

NIC 3Digit	Weight	April	May	June	July	August	September	October	November	December	January	February	March
151	16.77	57.5	63.5	67.4	61.7	76.9	59.4	60.3	64.1	48.2	61.2	46.0	61.2
152	7.63	66.8	70.1	67.1	69.3	69.1	70.6	70.5	68.0	70.4	71.1	67.1	71.1
153	8.90	112.6	125.1	119.7	132.0	128.9	107.7	123.9	106.7	131.5	131.4	130.9	130.9
154	67.78	79.7	137.4	137.6	177.2	256.3	155.1	227.5	197.7	236.0	237.0	235.8	239.0
155	8.60	177.7	176.1	171.9	157.6	146.0	145.4	138.0	135.8	153.4	179.8	196.2	172.3
160	8.87	5.2	5.3	5.9	6.1	5.9	5.5	6.2	6.0	6.1	6.5	5.6	5.8
171	25.64	66.1	71.2	77.2	77.5	78.9	70.4	70.5	72.4	75.0	79.9	70.8	79.3
172	13.74	59.3	70.7	71.5	70.8	58.6	62.8	68.8	77.3	72.8	86.5	89.1	89.9
181	4.82	150.4	213.0	219.9	226.1	266.0	302.7	252.2	238.7	266.5	332.8	321.1	321.1
191	0.14	879.0	844.2	922.2	832.2	1271.7	1646.9	1826.2	1464.8	1454.2	1225.8	947.2	1124.0
192	0.74	35.0	40.8	32.8	32.3	32.1	32.0	25.2	21.2	24.5	25.8	24.8	23.6
201	1.60	122.3	143.6	132.1	117.1	82.1	81.7	133.0	134.1	142.0	95.7	122.0	120.1
202	3.13	79.3	75.2	83.0	66.1	62.6	76.4	45.8	55.4	71.2	54.3	50.0	80.8
210	13.26	69.1	67.0	72.4	78.2	74.7	77.7	54.4	58.9	69.8	61.3	55.6	66.9
221	27.17	208.0	212.1	211.4	212.7	213.1	227.5	233.7	235.9	241.1	236.9	224.3	236.2
222	3.76	169.4	260.8	185.7	874.7	605.6	104.7	216.6	258.0	256.9	308.6	314.6	318.5
232	197.22	109.4	109.4	109.4	131.0	130.8	130.8	112.8	112.8	112.9	126.9	126.9	126.9
241	49.49	85.7	89.8	76.5	88.4	65.7	81.3	96.0	69.7	68.2	49.6	68.8	110.0
242	41.28	207.5	218.2	144.8	186.6	232.0	148.0	142.6	134.3	138.8	140.0	141.1	162.4
251	53.04	67.5	82.4	86.7	86.7	82.5	75.3	75.9	80.4	76.4	78.9	72.2	79.1
252	5.87	50.8	57.1	44.2	59.7	50.7	44.2	59.5	49.4	54.7	57.1	62.1	53.8
269	31.01	104.7	111.7	98.6	110.3	95.2	90.3	106.0	96.6	108.9	101.6	88.7	127.5
271	6.29	64.7	76.5	75.1	80.0	66.4	67.3	75.3	77.1	75.6	85.3	78.9	79.6
272	3.12	43.1	43.2	45.5	47.7	44.7	82.3	92.7	102.6	106.1	99.0	102.8	92.2
273	1.35	43.9	41.4	43.9	26.0	25.4	19.0	44.4	46.8	38.2	33.9	45.7	47.7
281	0.93	199.5	154.6	277.3	305.9	264.2	292.2	170.3	206.4	126.2	99.5	104.6	142.0
289	4.29	56.3	49.1	61.4	53.8	56.5	52.3	59.6	46.9	67.4	51.8	57.5	56.3
291	2.45	53.4	80.3	101.5	102.5	147.2	91.5	75.2	81.2	66.6	61.0	58.4	80.3
292	7.68	93.8	107.5	137.5	153.5	126.7	117.1	87.2	84.5	104.3	92.0	99.0	100.1
300	1.29	64.2	40.2	68.4	35.3	42.6	79.6	40.2	28.3	7.1	47.1	38.7	44.6
311	5.67	22.4	27.8	31.6	34.2	38.6	32.4	31.3	39.6	37.7	39.2	39.4	41.6
312	2.20	99.5	128.9	125.3	80.8	82.3	94.6	104.0	125.6	85.6	117.9	124.5	138.6
313	0.64	589.9	712.1	736.9	561.6	553.5	472.2	406.4	435.7	548.1	533.8	554.7	741.6
314	0.04	105.1	222.0	182.7	198.4	165.9	143.1	147.7	161.8	170.2	87.0	16.3	80.5
319	0.71	77.0	84.0	84.0	70.0	76.0	76.0	91.0	63.0	91.0	102.0	114.0	115.0
321	26.04	270.1	331.6	358.2	352.1	345.2	301.0	329.2	327.4	338.6	340.5	300.2	300.2
322	4.42	20.3	22.2	15.8	6.9	12.4	23.0	10.2	20.0	32.7	22.9	7.0	12.5
331	5.39	158.6	182.6	307.6	249.6	225.6	220.4	221.3	222.0	222.4	257.6	258.8	258.0
342	0.08	66.7	66.7	66.7	33.3	33.3	33.3	66.7	66.7	66.7	66.7	100.0	100.0
343	0.03	64.2	33.8	40.4	63.4	67.5	47.6	42.2	42.8	30.4	33.7	32.1	34.3
351	10.53	128.6	100.0	142.9	171.4	100.0	114.3	114.3	142.9	128.6	157.1	185.7	142.9
359	0.99	16.2	16.2	15.8	16.2	16.2	15.8	16.2	16.2	16.2	16.2	16.2	16.2
361	2.62	118.7	147.5	161.0	116.5	132.1	142.5	122.3	116.9	127.7	141.9	128.4	89.9
369	0.42	102.4	108.3	97.6	100.0	79.8	36.9	63.1	94.0	98.8	44.0	48.8	81.0







1510

