

DBS  
09-157

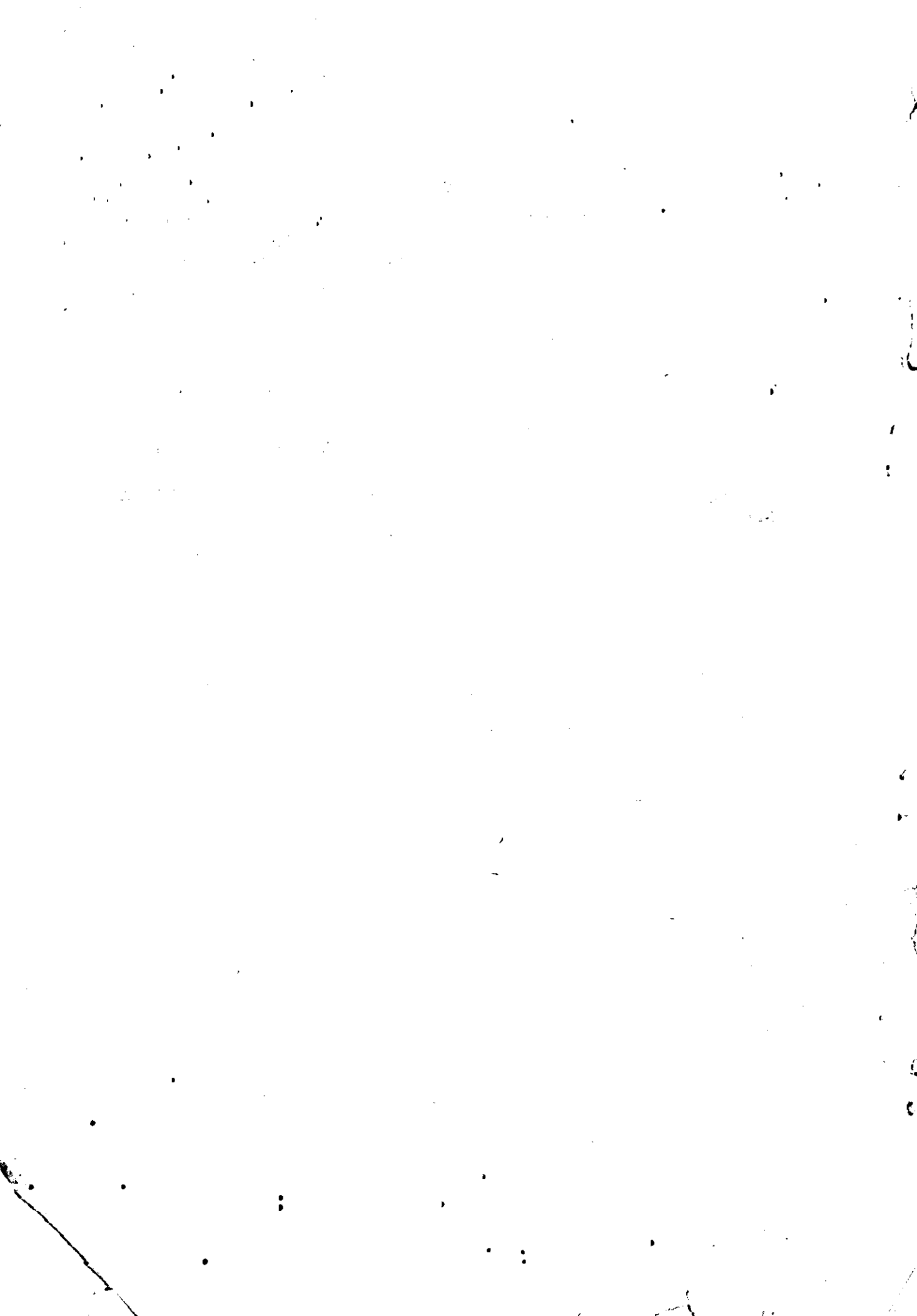
### FOREWORD

The State Planning Board and the Bureau of Economics and Statistics jointly propose to publish a series entitled "Statistics for planning" which shall form the basis for the Data Bank being organised as an integral part of the State Planning Board. The series will have nine volumes covering the various sectors of the State's economy.

The data presented in this volume have been collected and compiled by the Social Services Unit of the State Planning Board with the co-operation of the Bureau of Economics and Statistics. In this venture the State Planning Board had the willing co-operation of the concerned Departments and the Kerala University for which I am deeply thankful to them.

Trivandrum,  
13-6-1972.

N. GOPALAKRISHNAN NAIR,  
*Director,*  
*Bureau of Economics and Statistics &*  
*Data Bank.*



## LIST OF TABLES

### Section I

### EDUCATION

<i>Table Number</i>	<i>Title.</i>
1	Percentage of Literates to total population in Kerala (District -wise).
2	Number of Lower Primary, Upper Primary and High schools in Kerala 1956-57 to 1971-72.
3	District-wise number of schools 1950-51
4	Do. 1951-52
5	Do. 1952-53
6	Do. 1953-54
7	Do. 1954-55
8	Do. 1955-56
9	Do. 1956-57
10	Do. 1957-58
11	Do. 1958-59
12	Do. 1959-60
13	Do. 1960-61
14	Do. 1961-62
15	Do. 1962-63
16	Do. 1963-64
17	Do. 1964-65
18	Do. 1965-66
19	Do. 1966-67
20	Do. 1967-68
21	Do. 1968-69
22	Do. 1969-70
23	Do. 1970-71
24	Do. 1971-72
25	Pre-primary education in Kerala 1956-57 to 1969-70
26	District-wise strength of schools 1950-51
27	Do. 1951-52
28	Do. 1952-53
29	Do. 1953-54
30	Do. 1954-55
31	Do. 1955-56
32	Do. 1956-57
33	Do. 1957-58
34	Do. 1958-59
35	Do. 1959-60
36	Do. 1960-61
37	Students in lower primary classes by district 1961-62 to 1969-70
38	Students in upper primary classes by district 1961-62 to 1969-70
39	Students in secondary classes by district 1961-62 to 1969-70
40	Enrolment in classes I-IV by sex in Kerala 1956-57 to 1970-71.
41	Enrolment in classes V-VII by sex in Kerala 1956-57 to 1970-71
42	Enrolment in classes VIII-X by sex in Kerala 1956-57 to 1970-71

43	Enrolment in classes I to X in Kerala 1956-57 to 1971-72.
44	Enrolment in lower primary classes (I to IV) by sex and age groups 1956-57 to 1964-65
45	Enrolment in upper primary classes (V to VII) by sex and age groups 1956-57 to 1964-65
46	Enrolment in High school classes (VIII to X) by sex and age-groups 1956-57 to 1964-65
47	District-wise distribution of Teachers in schools 1950-51
48	Do. 1951-52
49	Do. 1952-53
50	Do. 1953-54
51	Do. 1954-55
52	Do. 1955-56
53	Do. 1956-57
54	Do. 1957-58
55	Do. 1958-59
56	Do. 1959-60
57	Do. 1960-61
58	District-wise distribution of Teachers in schools—1961-62 (Separately for Government & Private Schools)
59	Do. 1962-63
60	Do. 1963-64
61	Do. 1964-65
62	Do. 1965-66
63	Do. 1966-67
64	Do. 1967-68
65	Do. 1968-69
66	Do. 1969-70
67	Do. 1970-71
68	Teachers in Pre-primary Schools by sex 1956-57 to 1969-70
69	Teachers in lower primary schools by sex 1956-57 to 1970-71
70	Teachers in lower primary schools by general education 1956-57 to 1967-68
71	Teachers in lower primary schools by professional training 1956-57 to 1970-71.
72	Teachers in upper primary schools by sex 1956-57 to 1970-71
73	Teachers in upper primary schools by general education 1956-57 to 1967-68
74	Teachers in upper primary schools by professional training 1956-57 to 1970-71
75	Teachers in secondary schools by sex 1956-57 to 1967-68
76	Teachers in secondary schools by general education 1956-57 to 1967-68
77	Teachers in secondary schools by professional training 1956-57 to 1967-68
78	Teachers in vocational and technical schools by sex 1956-57 to 1967-68
79	Teachers in special education by sex 1956-57 to 1967-68
80	Nursery training schools—number, enrolment and out-turn 1956-57 to 1970-71
81	Teacher's training schools—number, enrolment and out-turn—1956-57 to 1969-70
82	Wastage in lower primary education in Kerala (classes I-IV) 1956-57 to 1966-67
83	Wastage in upper primary education (classes V-VII) in Kerala 1956-57 to 1966-67
84	Wastage in secondary education (Classes VIII to X) in Kerala 1956-57 to 1966-67
85	Schools for the handicapped in Kerala
86	S. S. L. C. examination results in Kerala
87	T. T. C. examination results in Kerala
88	Cost per pupil on education in Kerala
89	Teacher-pupil ratio on general school education in Kerala.

- 90 Revenue districts, educational districts and sub districts
- 91 Educational district-wise number of schools 1971-72
- 92 Number of colleges by type of management 1956-57 to 1967-68
- 93 Teacher's training colleges—number, enrolment and out-turn—1956-57 to 1966-67
- 94 Number of arts and science colleges in Kerala and the number of students 1966-67 to 1971-72
- 95 Number of training colleges in Kerala and number of students 1966-67 to 1971-72
- 96 Category-wise number of colleges in the University of Kerala (1969-70 to 1971-72)
- 97 Enrolment in colleges in Kerala and number of students per lakh of population—1956-57 to 1965-66
- 98 Enrolment in colleges according to faculties 1956-57 to 1965-66
- 99 Percentage enrolment in colleges according to faculties 1956-57 to 1965-66
- 100 Enrolment in Intermediate classes according to faculties 1956-57 to 1965-66
- 101 Enrolment in degree classes according to faculties 1956-57 to 1965-66
- 102 Enrolment in degree classes according to faculties 1956-57 to 1965-66
- 103 Enrolment in post graduate classes according to faculties 1956-57 to 1965-66
- 104 Enrolment in post graduate classes according to faculties 1956-57 to 1965-66
- 105 Enrolment in research classes according to faculties 1956-57 to 1965-66
- 106 Enrolment of students in other branches of studies, 1956-57 to 1965-66
- 107 Enrolment of women students in colleges 1956-57 to 1965-66
- 108 Teacher-pupil ratio in colleges for general education 1956-57 to 1965-66
- 109 Number of students in different categories of colleges under the Kerala University from 1969-70 to 1971-72—Government Colleges
- 110 Number of students in different categories of colleges under the Kerala University from 1969-70 to 1971-72—Private Colleges
- 111 Faculty wise distribution of students in colleges under the University of Kerala during 1971-72.
- 112 Total number of students passed in Intermediate, Pre-university and Pre-professional Courses 1957 to 1966
- 113 Number of students passed in Intermediate, Pre-university and Pre-professional Courses 1957 to 1966  
(Separately for March and September Examinations)
- 114 Out-turn of B. A., B. Sc. and B.Com. Degree holders 1957 to 1966
- 115 Out-turn of B. A., B.Sc., and B.Com. Degree holders 1957 to 1966  
(Separately for March and September Examinations)
- 116 Out-turn of M.A., M.Sc., and M.Com. Degree holders 1957-1966
- 117 Out-turn of Graduates-Professional 1957 to 1966 (Separately for March and September Examinations)
- 118 Pass percentage in Intermediate, Pre-university & Pre-professional Examinations in 1957 to 1966
- 119 Pass percentage in Intermediate, Pre-university and Pre-professional Examinations 1957- to 1966  
(Separately for March and September Examinations)
- 120 Pass percentage in Degree examinations—1957 to 1966
- 121 Pass percentage in Degree examinations—1957 to 1966  
(Separately for March and September Examinations)
- 122 Pass percentage in Degree examinations—Professional 1957 to 1966
- 123 Pass percentage in Degree examinations—Professional 1957-1966 (Separately for March and September Examinations)
- 124 Pass percentage in Post-graduate Degree examinations in 1957 to 1966
- 125 Kerala University examinations results (1970-71 and 1971-72)
- 126 Number of Teachers in the different Categories of Colleges under the University of Kerala during 1969-70 to 1971-72.—Government Colleges

- 127 Number of Teachers in different categories of Colleges under the University of Kerala during 1969-70 to 1971-72—Private Colleges
- 128 Number of Polytechnics in Kerala and intake capacity from 1967-68 to 1971-72
- 129 Number of Industrial Training Institute in Kerala and intake capacity from 1967-68 to 1971-72.
- 130 Government expenditure on education in Kerala 1960-61 to 1970-71
- 131 Per capita Government expenditure on education in Kerala—1957-58 to 1970-71
- 132 Progress of Government expenditure on General school education in Kerala—1961-62 to 1971-72
- 133 Per capita expenditure on education on various Indian States.
- 134 Expenditure on education as percentage to total expenditure in various States.

## Section II

### HEALTH SERVICES

<i>Table No.</i>	<i>Title</i>
1	District-wise number of Medical Institutions (allopathic) 1950-51
2	Do. 1951-52
3	Do. 1952-53
4	Do. 1953-54
5	Do. 1954-55
6	Do. 1955-56
7	Do. 1960-61
8	Do. 1965-66
9	Do. 1966-67
10	Do. 1967-68
11	Do. 1968-69
12	Do. 1969-70
13	Do. 1970-71
14	Medical Institutions and Beds in Kerala as on 31-3-1971
15	District-wise distribution of Medical Institutions and Beds 1965-66—1970-71
16	Bed-Population Ratio—Kerala—(District-wise)
17	Progress of Medical and Public Health Institutions during plan periods.
18	District-wise distribution of Institutions and Beds under the Indigenous system of Medicine as on 31-3-1971
19	No. of patients treated as In-patients and Out-patients in Hospitals and Dispensaries in Kerala (Year-wise and Sex-wise)
20	No. of Surgical operations and postmortem examinations done in Hospitals (1957 to 1970)
21	No. of Family Planning Centres in Kerala (1951 to 1971)
22	No. of Family Planning Centres functioning in the State as on 31-3-1971
23	Categories of staff trained under Family Planning
24	Details of Sterilisation operations and I. U. C. D. insertions conducted in Kerala
25	District-wise achievement of Family Planning Programme from 1966-67 to 1970-71
26	Family Planning in India—Review of progress and target for the Fourth Five Year Plan.
27	State-wise coverage of population by sterilisation and I. U. C. D. upto 1967-68
28	Percapita expenditure on Family Planning—State-wise
29	Plan outlay and expenditure on Medical and Public Health Services in Kerala
30	Percapita Government expenditure on Health Services—State-wise (1965-66 to 1970-71)
31	Bed-Population Ratio—State-wise

- 32 Medical Institutions and Beds—State-wise (1965)
- 33 Progress of Health Services and Medical Manpower in India
- 34 Health Activities—1960-61 and 1965-66—Selected achievements
- 35 Health Programme—All India achievements as on 30-9-1968
- 36 Estimated Medical personnel requirement for each State (Based on 1961 Census)
- 37 Estimated number of active Doctors and their ratio to population 1950 to 1970 (All India)
- 38 Annual intake and out-turn of Medical Graduates—All India
- 39 No. of Medical Practitioners under the different systems
- 40 Stock of Para Medical personnel (All India)
- 41 Details of Rural Water Supply Schemes commissioned (1970-71)
- 42 Details of Educational concessions to Backward Community Students during 1968-69
- 43 Details of Educational concessions to Backward Community Students during 1969-70
- 44 Expenditure on Harijan Welfare Schemes during the period from 1960-61 to 1971-72





---

**SECTION—1**

**EDUCATION**

---

TABLE I  
Percentage of Literates to total Population in Kerala—District-wise

District	Percentage of Literates.	
	1961	1971
Cannanore	41.29	54.69
Kozhikode	44.88	57.59
Malappuram	34.29	47.74
Palghat	33.69	46.50
Trichur	48.16	61.58
Ernakulam	50.58	65.26
Kottayam	56.56	67.59
Alleppey	56.90	70.25
Quilon	50.49	63.41
Trivandrum	45.30	62.23
KERALA	46.85	60.16

TABLE-2  
Number of Lower Primary, Upper Primary and High Schools in Kerala  
1956-57 to 1971-72

Year	Lower Primary Schools						Upper Primary Schools						High Schools					
	Total		of which J.B.S.				Total		of which S.B.S.				Total		of which P.B.S.			
	Govt.	Pvt.	Total	Govt.	Pvt.	Total	Govt.	Pvt.	Total	Govt.	Pvt.	Total	Govt.	Pvt.	Total	Govt.	Pvt.	Total
(1)	(2)	(3)	(4)	(5)	(6)	(7)	(8)	(9)	(10)	(11)	(12)	(13)	(14)	(15)	(16)	(17)	(18)	(19)
1956-57	1644	5438	7082	17	366	383	259	1406	1665	4	72	76	140	623	763			
1957-58	2903	4638	7541	188	253	441	502	1348	1850	31	64	95	217	619	836	..	1	1
1958-59	2794	3984	6778	214	232	446	528	1363	1891	29	74	103	242	631	873	..	2	2
1959-60	2787	3974	6761	214	230	444	533	1374	1907	28	74	102	245	634	879	..	2	2
1960-61	2719	3987	6706	201	216	417	530	1402	1932	23	60	83	244	644	888	..	3	3
1961-62	2835	3910	6745	201	216	417	576	1409	1985	23	60	83	276	653	929	..	3	3
1962-63	2985	3919	6904	201	216	417	711	1574	2285	23	60	83	312	701	1013	..	3	3
1963-64	2928	3991	6919	186	197	383	705	1581	2286	21	61	82	315	705	1020	..	3	3
1964-65	2898	4032	6930	177	193	370	758	1680	2438	23	50	73	345	801	1146	..	3	3
1965-66	2904	4050	6954	174	193	367	761	1686	2447	22	49	71	345	806	1151	..	3	3
1966-67	2861	4072	6933	166	195	361	778	1697	2475	22	49	71	391	884	1275	..	3	3
1967-68	2864	4067	6931	164	200	364	782	1697	2479	22	49	71	394	888	1282	..	3	3
1968-69	2805	4111	6916	..	..	..	797	1737	2534	..	..	..	440	941	1381	..	..	..
1969-70	2800	4088	6888	..	..	..	808	1735	2543	..	..	..	441	941	1382	..	..	..
1970-71	2823	4063	6886	..	..	..	811	1733	2544	..	..	..	442	942	1384	..	..	..
1971-72	2823	4063	6886	..	..	..	811	1740	2551	..	..	..	442	951	1393	..	..	..

J.B.S. Junior Basic Schools.  
S.B.S. Senior Basic Schools.  
P.B.S. Post Basic Schools.

TABLE 3  
Districtwise Number of Schools 1950-51

Sl. No.	Dis ric	Nursery School		Lower Primary Schools		Upper Primary Schools		High Schools		Other Schools		All Schools		Total
		Government	Private	Government	Private	Government	Private	Government	Private	Government	Private	Government	Private	
(1)	(2)	(3)	(4)	(5)	(6)	(7)	(8)	(9)	(10)	(11)	(12)	(13)	(14)	(15)
1	Trivandrum	..	..	351	134	41	49	21	41	3	3	416	227	643
2	Quilon	..	..	338	241	46	87	13	62	4	10	402	400	802
3	Alleppey	..	..	279	302	63	94	13	84	4	11	359	491	850
4	Kottayam	..	..	213	305	38	101	12	82	1	10	264	498	762
5	Ernakulam	..	..	240	286	35	77	17	93	1	7	293	463	756
6	Trichur	..	..	89	288	9	68	30	63	1	4	129	423	552
7	Palghat	..	..	48	880	10	148	5	40	2	57	65	1119	1184
8	Kozhikode	..	..	23	1500	2	256	2	30	4	50	31	1836	1867
9	Cannanore	..	..	20	1089	3	184	2	25	17	48	42	1346	1388
	Total	..	..	1601	5025	247	1064	115	520	37	200	2001	6803	8804

TABLE 4

## Districtwise Number of Schools 1951-52

Sl. No.	District	Nursery Schools		Lower Primary Schools		Upper Primary Schools		High Schools		Other Schools		All Schools		Total
		Government	Private	Government	Private	Government	Private	Government	Private	Government	Private	Government	Private	
1	2	3	4	5	6	7	8	9	10	11	12	13	14	15
1	Trivandrum	1	2	351	132	41	48	22	41	3	5	418	228	646
2	Quilon	..	..	339	245	46	81	14	65	3	10	402	401	803
3	Alleppey	..	2	279	297	63	96	13	85	4	12	359	492	851
4	Kottayam	..	..	212	302	39	104	12	82	1	10	264	498	762
5	Ernakulam	..	..	234	280	38	79	17	94	1	7	290	460	750
6	Trichur	..	..	88	347	10	102	30	64	1	4	129	517	646
7	Palghat	..	1	48	888	10	155	5	40	2	85	65	1168	1233
8	Kozhikode	..	..	23	1501	2	264	2	30	4	56	31	1851	1882
9	Cannanore	..	..	22	1183	3	191	2	28	17	75	44	1477	1521
	Total	1	5	1596	5175	252	1120	117	529	36	264	2002	7092	9094

TABLE 5

## Districtwise Number of Schools 1952-53

1	Trivandrum	1	2	352	135	42	50	22	41	4	5	421	233	654
2	Quilon	..	..	340	254	47	84	16	68	3	10	406	416	822
3	Alleppey	..	2	281	300	61	92	16	93	4	12	362	499	861
4	Kottayam	..	..	215	303	40	98	12	89	1	10	268	500	768
5	Ernakulam	..	..	237	286	39	80	17	100	1	7	294	473	767
6	Trichur	..	..	90	378	10	107	30	68	1	4	131	557	688
7	Palghat	..	2	48	876	11	169	5	41	2	95	66	1183	1249
8	Kozhikode	..	..	23	1520	3	265	2	31	4	78	32	1894	1926
9	Cannanore	..	..	22	1197	3	208	2	28	18	117	45	1550	1595
	Total	1	6	1608	5249	256	1153	122	559	38	338	2025	7305	9330

TABLE 6

## Districtwise Number of Schools 1953-54

1	Trivandrum	1	3	352	135	42	52	22	42	5	5	422	237	659
2	Quilon	..	..	340	258	47	91	16	72	3	10	406	431	837
3	Alleppey	..	2	281	301	64	97	17	96	5	12	364	508	872
4	Kottayam	..	..	220	304	41	98	12	92	1	10	274	504	778
5	Ernakulam	..	..	241	289	37	88	18	103	1	7	297	487	784
6	Trichur	..	..	94	378	10	112	30	69	1	4	135	563	698
7	Palghat	..	2	48	870	14	182	4	44	2	114	69	1212	1281
8	Kozhikode	..	..	23	1520	4	272	3	32	4	84	34	1908	1942
9	Cannanore	..	..	22	1224	4	220	2	29	18	129	46	1602	1648
	Total	1	7	1621	5279	263	1212	124	579	40	375	2047	7452	9499

TABLE 7

## Districtwise Number of Schools 1954-55

1	Trivandrum	1	3	353	136	42	51	22	43	5	5	423	238	661
2	Quilon	..	..	339	247	46	81	17	73	3	10	405	411	816
3	Alleppey	..	2	281	301	61	99	18	97	5	12	365	511	876
4	Kottayam	..	..	220	305	43	104	13	94	1	10	277	513	790
5	Ernakulam	..	..	245	296	37	92	18	104	1	8	301	500	801
6	Trichur	..	..	97	381	10	115	30	70	1	5	138	571	709
7	Palghat	..	2	47	871	15	204	5	45	2	172	69	1294	1363
8	Kozhikode	..	..	23	1543	4	276	4	32	4	81	35	1932	1967
9	Cannanore	..	..	22	1274	5	226	2	33	19	133	48	1666	1714
	Total	1	7	1627	5354	263	1248	129	591	41	436	2061	7636	9697

TABLE 8

## Districtwise Number of Schools 1955-56

Sl.	District	Nursery School		Lower Primary Schools		Upper Primary Schools		High Schools		Other Schools		All Schools		Total
		Government	Private	Government	Private	Government	Private	Government	Private	Government	Private	Government	Private	
1	2	3	4	5	6	7	8	9	10	11	12	13	14	15
1	Trivandrum	1	3	354	139	42	52	23	44	6	5	426	243	669
2	Quilon	..	..	339	256	47	88	17	75	3	10	406	429	835
3	Alleppey	1	2	283	306	62	102	19	97	6	13	371	520	891
4	Kottayam	..	..	224	306	43	113	13	94	1	10	281	523	804
5	Ernakulam	..	..	246	309	37	97	18	104	3	8	304	518	822
6	Trichur	..	..	99	383	11	123	30	71	2	5	142	582	724
7	Palghat	..	2	45	863	15	213	5	47	3	157	68	1282	1350
8	Kozhikode	..	..	23	1581	4	284	..	34	4	82	35	1981	2016
9	Cannanore	..	..	22	1251	6	236	2	34	19	134	49	1655	1704
	Total	2	7	1635	5394	267	1308	131	600	47	424	2082	7733	9815

TABLE 9

## Districtwise Number of Schools 1956-57

1	Trivandrum	1	3	356	142	42	54	24	46	8	8	431	253	684
2	Quilon	..	2	339	262	46	127	17	75	4	8	406	474	880
3	Alleppey	1	2	284	309	60	106	19	97	9	13	373	527	900
4	Kottayam	..	..	224	306	42	115	14	94	8	10	288	525	813
5	Ernakulam	..	1	246	336	34	100	19	104	15	8	314	549	863
6	Trichur	..	1	99	384	10	128	30	72	6	13	145	598	743
7	Palghat	..	2	46	860	15	229	7	57	3	159	71	1307	1378
8	Kozhikode	..	..	27	1581	4	310	8	44	4	82	43	2017	2060
9	Cannanore	..	..	23	1258	6	237	2	34	19	158	50	1687	1737
	Total	2	11	1644	5438	259	1406	140	623	76	459	2121	7937	10058

TABLE 10

## Districtwise Number of Schools 1957-58

1	Trivandrum	1	7	360	148	45	62	24	48	8	8	436	273	709
2	Quilon	..	3	363	263	47	135	18	78	3	8	431	487	918
3	Alleppey	1	2	313	313	63	109	20	98	7	13	404	535	939
4	Kottayam	..	..	238	327	43	117	18	94	3	10	302	548	850
5	Ernakulam	..	4	277	351	39	107	20	105	8	8	344	575	919
6	Trichur	..	3	106	389	14	126	32	74	19	13	171	605	776
7	Palghat	..	2	357	553	58	186	29	43	12	144	456	928	1384
8	Kozhikode	..	..	527	1390	87	260	36	44	21	67	671	1761	2432
9	Cannanore	..	..	325	904	91	246	20	35	20	143	456	1328	1784
	Total	2	21	2864	4638	487	1348	217	619	101	414	3671	7040	10711

TABLE 11

## Districtwise Number of Schools 1958-59

1	Trivandrum	1	7	352	146	54	60	28	49	6	3	441	265	706
2	Quilon	..	4	363	273	50	133	19	79	3	8	435	497	932
3	Alleppey	1	2	313	308	63	114	23	100	7	15	407	539	946
4	Kottayam	..	..	238	332	42	116	18	95	3	8	301	551	852
5	Ernakulam	..	5	277	290	40	104	21	105	7	6	345	510	855
6	Trichur	..	4	108	387	14	128	34	74	16	1	172	594	766
7	Palghat	..	2	282	535	59	169	32	46	11	73	384	825	1209
8	Kozhikode	..	..	523	921	99	262	37	49	20	18	679	1250	1929
9	Cannanore	..	..	307	792	91	277	30	34	20	62	448	1165	1613
	Total	2	24	2763	3984	512	1363	242	631	93	194	3612	6196	9808

TABLE 12  
Districtwise Number of Schools 1959-60

Sl. No.	District	Nursery School		Lower Primary Schools		Upper Primary Schools		High Schools		Other Schools		All Schools		Total
		Government	Private	Government	Private	Government	Private	Government	Private	Government	Private	Government	Private	
1	2	3	4	5	6	7	8	9	10	11	12	13	14	15
1	Trivandrum	1	7	352	146	55	61	27	53	5	2	440	269	709
2	Quilon	..	4	361	271	50	133	20	79	4	8	435	495	930
3	Alleppey	1	7	287	333	62	115	24	100	8	11	382	566	948
4	Kottayam	..	..	226	313	45	116	18	95	3	8	292	532	824
5	Ernakulam	..	7	276	284	42	113	21	103	9	9	348	516	864
6	Trichur	..	4	110	390	14	131	33	76	15	..	172	601	773
7	Palghat	..	2	289	534	59	166	32	45	11	5	391	752	1143
8	Kozhikode	..	..	522	921	100	262	37	48	19	7	678	1238	1916
9	Cannanore	..	..	329	782	90	277	30	35	20	9	469	1103	1572
	Total	2	31	2752	3974	517	1374	242	634	94	59	3607	6072	9679

TABLE 13

Districtwise Number of Schools 1960-61

1	Trivandrum	1	7	352	146	55	61	27	53	5	2	440	269	709
2	Quilon	..	14	361	270	51	140	20	81	3	9	435	514	949
3	Alleppey	1	8	285	341	62	116	24	101	7	12	379	578	957
4	Kottayam	..	2	223	324	44	121	19	95	3	8	289	550	839
5	Ernakulam	..	7	269	291	41	110	21	105	9	7	340	520	860
6	Trichur	..	8	112	389	14	134	33	77	15	2	174	610	784
7	Palghat	..	3	262	521	58	173	32	48	10	4	362	749	1111
8	Kozhikode	..	3	514	923	101	269	38	48	16	3	669	1246	1915
9	Cannanore	..	7	307	782	89	278	30	36	19	6	445	1109	1554
	Total	2	59	2685	3987	515	1402	244	644	87	53	3533	6145	9678

TABLE-14

Districtwise number of schools 1961-62

Sl.No.	Districts	Lower primary schools		Upper primary schools		High schools		Training schools	
		Government	Private	Government	Private	Government	Private	Government	Private
1	2	3	4	5	6	7	8	9	10
1	Trivandrum	379	152	55	58	37	51	3	5
2	Quilon	380	274	65	142	25	82	2	8
3	Alleppey	300	353	64	113	26	101	4	12
4	Kottayam	244	335	47	157	22	97	3	8
5	Ernakulam	492	324	48	104	23	109	4	6
6	Trichur	165	424	18	134	35	76	3	3
7	Palghat	266	503	51	154	64	46+2	3	3
8	Kozhikode	508	829	114	248	64	49+1	5	3
9	Cannanore	311	689	99	262	40	39	4	1
	TOTAL	3045	3883	553	1372	336	650+3	31	49

TABLE-15

District-wise number of schools 1962-63

1	Trivandrum	360	145	76	93	44	55	3	5
2	Quilon	397	268	73	163	32	93	2	8
3	Alleppey	352	305	75	130	26	108	4	12
4	Kottayam	252	320	68	146	24	101	3	8
5	Ernakulam	281	300	77	126	26	115	4	6
6	Trichur	143	356	34	150	38	82	3	3
7	Palghat	288	512	76	184	35	52	3	3
8	Kozhikode	563	917	117	281	48	54	5	3
9	Cannanore	349	767	115	300	37	43	4	1
	TOTAL	2985	3920	711*	1573	312	703	31	49

TABLE—16

## District-wise number of schools 1963-64

Sl.No.	District	Lower primary schools		Upper primary schools		High schools		Basic training schools	
		Government	Private	Government	Private	Government	Private	Government	Private
1	2	3	4	5	6	7	8	9	10
1	Trivandrum	365	143	74	93	45	55	3	6
2	Quilon	394	277	73	163	33	93	2	13
3	Alleppey	311	347	76	130	28	108	4	14
4	Kottayam	268	328	68	147	24	102	3	10
5	Ernakulam	281	302	77	126	27	116	4	12
6	Trichur	144	402	34	150	38	82	3	7
7	Palghat	280	511	71	187	35	52	3	4
8	Kozhikode	541	921	118	281	48	54	5	5
9	Cannanore	344	760	114	302	37	43	4	3
	TOTAL	2928	3991	705	1581	315	705	31	74

TABLE—17

## District-wise number of schools 1964-65

1	Trivandrum	353	167	86	100	49	62	3	6
2	Quilon	422	288	79	173	36	109	2	13
3	Alleppey	310	437	89	134	30	122	4	14
4	Kottayam	265	341	71	158	27	119	3	10
5	Ernakulam	261	301	80	137	33	131	4	12
6	Trichur	141	399	39	167	41	89	3	7
7	Palghat	274	509	77	197	37	57	3	4
8	Kozhikode	540	909	119	299	51	61	5	5
9	Cannanore	335	768	118	315	41	51	4	3
	TOTAL	2901	4029	758	1680	345	801	31	74

TABLE—18

## District-wise number of schools 1965-66

1	Trivandrum	354	169	86	100	49	62	3	6
2	Quilon	422	290	79	175	36	110	2	12
3	Alleppey	305	352	90	135	30	122	4	14
4	Kottayam	264	345	71	158	27	120	3	10
5	Ernakulam	269	307	81	139	33	133	4	12
6	Trichur	152	388	39	167	41	94	3	7
7	Palghat	275	509	71	204	37	97	3	4
8	Kozhikode	542	912	119	300	51	117	5	5
9	Cannanore	334	767	119	314	41	96	4	3
	TOTAL	2904	4050	821	1626	345	806	31	74

TABLE—19

## District-wise number of schools 1966-67

1	Trivandrum	352	175	89	101	53	66	3	6
2	Quilon	418	287	79	179	42	117	2	13
3	Alleppey	297	352	90	132	36	141	4	14
4	Kottayam	255	354	72	159	34	134	3	10
5	Ernakulam	268	317	81	135	41	147	4	12
6	Trichur	131	401	46	165	44	101	3	7
7	Palghat	271	508	77	201	40	61	3	4
8	Kozhikode	544	909	126	305	55	71	5	5
9	Cannanore	330	764	120	318	46	56	4	3
	TOTAL	2861	4072	778	1697	391	884	31	74

TABLE-20

## Districtwise number of schools 1967-68

Sl.No.	District	Lower primary schools		Upper primary schools		High schools		Training schools	
		Government	Private	Government	Private	Government	Private	Government	Private
1	2	3	4	5	6	7	8	9	10
1	Trivandrum	352	175	89	99	54	67	3	6
2	Quilon	418	287	79	179	42	118	2	12
3	Alleppey	297	351	90	132	36	132	4	14
4	Kottayam	256	353	72	159	34	133	3	10
5	Ernakulam	271	317	84	135	41	147	4	12
6	Trichur	131	398	45	165	45	101	3	7
7	Palghat	270	508	76	202	31	61	3	4
8	Kozhikode	538	914	125	307	55	71	5	5
9	Cannanore	331	764	122	319	46	58	4	3
	TOTAL	2864	4067	782	1697	394	888	31	74

TABLE-21

## District-wise number of schools 1968-69

1	Trivandrum	347	178	89	104	59	70	3	6
2	Quilon	412	295	81	185	49	120	2	13
3	Alleppey	290	358	94	131	39	139	4	14
4	Kottayam	248	361	74	162	41	143	3	10
5	Ernakulam	255	324	80	137	47	154	4	12
6	Trichur	130	406	47	168	48	105	3	7
7	Palghat	267	511	77	207	46	64	3	4
8	Kozhikode	534	915	132	317	61	81	5	5
9	Cannanore	322	763	123	326	50	65	4	3
	TOTAL	2805	4111	797	1737	440	941	31	74

TABLE-22

## District-wise number of schools 1969-70

1	Trivandrum	346	178	89	104	59	70	3	6
2	Quilon	411	292	82	183	50	120	2	12
3	Alleppey	287	355	95	132	39	139	4	14
4	Kottayam	245	360	75	161	41	142	3	10
5	Ernakulam	257	319	85	136	47	155	4	12
6	Trichur	140	417	50	174	48	106	3	7
7	Palghat	186	363	56	157	38	55	3	4
8	Malappuram	344	447	75	131	32	30	..	..
9	Kozhikode	256	596	77	231	37	60	5	5
10	Cannanore	328	761	124	326	50	64	4	3
	TOTAL	2800	4088	808	1735	441	941	31	74

TABLE-23

## District-wise number of schools 1970-71

1	Trivandrum	347	178	89	103	59	70	3	6
2	Quilon	412	289	82	183	50	121	2	12
3	Alleppey	288	357	95	131	39	139	4	14
4	Kottayam	243	371	75	161	41	142	3	10
5	Ernakulam	263	322	84	132	47	155	4	12
6	Trichur	140	416	50	176	48	106	3	7
7	Palghat	189	363	56	158	39	55	3	4
8	Malappuram	345	443	74	132	32	30	..	..
9	Kozhikode	256	594	77	231	37	40	5	5
10	Cannanore	321	758	127	327	50	64	4	3
	TOTAL	2804	4091	809	1734	442	942	31	74

TABLE 24  
District wise number of schools 1971-72

Sl. No.	District	Lower primary school		Upper primary school		High schools		Training schools	
		Government	Private	Government	Private	Government	Private	Government	Private
1	2	3	4	5	6	7	8	9	10
1	Trivandrum	346	180	90	104	59	72	3	6
2	Quilon	410	288	82	184	50	121	2	13
3	Alleppey	291	357	95	131	39	139	4	14
4	Kottayam	242	372	75	160	41	143	3	10
5	Ernakulam	264	319	84	137	47	136	4	12
6	Trichur	140	418	50	173	48	109	3	7
7	Palghat	187	363	58	160	39	56	3	4
8	Kozhikode	602	1038	151	364	69	90	5	5
9	Cannanore	341	728	127	327	50	65	4	3
TOTAL		2823	4063	811	1740	442	952	21	74

TABLE 25  
Pre-Primary Education in Kerala 1956-57 to 1969-70

Year	Number of Pre-primary and Pre-basic Schools			Number of Pupils				Total
	Government	Private	Total	Government		Private		
				Boys	Girls	Boys	Girls	
(1)	(2)	(3)	(4)	(5)	(6)	(7)	(8)	(9)
1956-57	2	11	13	N.A.	N.A.	502	660	1162
1957-58	3	21	24	81	70	719	733	1603
1958-59	2	24	26	131	119	742	693	1685
1959-60	2	31	33	123	130	839	621	1713
1960-61	2	59	61	N.A.	N.A.	1779	1589	3368
1961-62	14	99	113	N.A.	N.A.	2822	2987	5809
1962-63	22	115	137	605	632	4381	4239	9857
1963-64	22	116	138	N.A.	N.A.	3920	3699	7619
1964-65	22	114	136	N.A.	N.A.	3703	3405	7108
1965-66	23	126	149	N.A.	N.A.	4128	4161	8289
1966-67	23	132	155	561	588	3687	3606	8442
1967-68	23	133	156	596	615	3119	3017	7347
1968-69	23	135	158	N.A.	N.A.	3219	3425	6635
1969-70	23	118	141	N.A.	N.A.	N.A.	N.A.	7507

TABLE 26  
Districtwise Strength of Schools—1950-51

Sl. No.	District	Nursery Schools		Lower Primary Schools		Upper Primary Schools		High Schools		Other Schools		All Schools		
		Boys	Girls	Boys	Girls	Boys	Girls	Boys	Girls	Boys	Girls	Boys	Girls	Total
(1)	(2)	(3)	(4)	(5)	(6)	(7)	(8)	(9)	(10)	(11)	(12)	(13)	(14)	(15)
1	Trivandrum	..	..	125179	96290	22710	18640	16219	9778	1217	287	165325	124995	290320
2	Quilon	..	..	95692	87666	25426	21335	21944	12215	414	257	143476	121473	264949
3	Alleppey	..	..	95540	84448	20229	16017	34490	19362	378	356	150637	120183	270820
4	Kottayam	..	..	92071	79350	18522	14753	23800	19581	262	248	134655	113932	248587
5	Ernakulam	..	..	98154	76062	47141	48264	31523	23735	70	43	176888	148104	324992
6	Trichur	..	..	64149	60636	24250	16012	34478	37503	18	12	122895	104163	227058
7	Palghat	..	..	62982	47143	22864	13751	14392	4724	186	207	100424	65825	166249
8	Kozhikode	..	..	85039	61341	27327	17766	13049	5674	922	877	126337	85658	211995
9	Cannanore	..	..	66955	48840	27817	16508	12204	4839	1483	678	108459	70965	179424
Total		..	..	785761	641776	236286	183146	202099	127411	4950	2965	1229096	955298	2184394



TABLE 27  
Districtwise strength of Schools 1951-52

Sl. No.	District	Nursery Schools		Lower Primary Schools		Upper Primary Schools		High Schools		Other Schools		All Schools		Total
		Boys	Girls	Boys	Girls	Boys	Girls	Boys	Girls	Boys	Girls	Boys	Girls	
(1)	(2)	(3)	(4)	(5)	(6)	(7)	(8)	(9)	(10)	(11)	(12)	(13)	(14)	(15)
1	Trivandrum	70	120	125827	96252	23210	18950	17011	9991	1218	288	167336	125600	292936
2	Quilon	..	..	102354	90968	26600	21718	24106	13032	400	263	153160	125981	279441
3	Alleppey	31	45	98824	89048	21756	16050	34992	21083	377	455	155981	126681	282662
4	Kottayam	..	..	94746	80599	18999	14841	26730	21468	273	256	140748	117164	257912
5	Ernakulam	..	..	97545	78144	48573	44337	30525	22948	80	33	170723	145462	316185
6	Trichur	..	..	88179	72393	23010	16882	35100	28606	36	24	146325	117905	264230
7	Palghat	20	30	63540	48405	23787	18239	14338	5434	215	216	101950	72324	174274
8	Kozhikode	..	..	88006	60054	27494	18664	14453	4891	946	910	130999	84519	215418
9	Cannanore	..	..	76794	51268	32306	19547	12665	4806	1533	793	123298	76414	199712
	Total	121	195	835816	667130	245735	189228	209970	132259	5078	3238	1296720	992050	2488482

TABLE 28  
Districtwise strength of Schools 1952-53

1	Trivandrum	74	120	126256	96468	24970	19170	17959	10071	1231	276	170490	126125	296645
2	Quilon	..	..	107852	96880	27561	22640	27013	14083	382	309	162808	133912	296720
3	Alleppey	40	55	99164	89620	20623	16463	40082	24049	328	464	160237	130651	290888
4	Kottayam	..	..	95023	82204	19305	13812	19242	23755	278	262	133848	120033	253881
5	Ernakulam	..	..	98956	78828	49913	18150	31921	24009	79	84	180869	121071	301940
6	Trichur	..	..	82217	75139	23551	16611	36865	29486	35	25	142668	121261	263929
7	Palghat	30	47	66841	50810	25823	17180	14676	5675	200	352	107570	74064	181634
8	Kozhikode	..	..	90127	67776	32206	19961	15041	6213	1014	941	138478	94891	233369
9	Cannanore	..	..	78554	57765	38428	20986	12426	4261	1572	819	130980	83831	214811
	Total	144	222	845080	695510	262380	164973	215225	141602	5119	3532	1327948	1005839	2333787

TABLE 29  
Districtwise Strength of Schools 1953-54

1	Trivandrum	100	150	126272	96740	25310	19800	18756	9898	1351	296	171789	126884	298673
2	Quilon	..	..	110804	99259	28203	23424	26033	15223	426	256	165466	138162	303628
3	Alleppey	40	55	101424	95967	21454	17013	40477	24928	409	474	163804	133437	302241
4	Kottayam	..	..	96073	83415	20548	12242	32025	24012	313	297	148969	119966	268935
5	Ernakulam	..	..	102240	70203	52484	53755	34478	26567	79	84	189281	150609	339290
6	Trichur	..	..	85250	69478	21876	18564	37959	29889	50	70	145135	118001	263136
7	Palghat	35	50	75647	57323	28572	20144	15251	6001	242	361	119747	83879	203626
8	Kozhikode	..	..	94435	71881	32797	21205	15331	6548	971	956	143534	100590	244124
9	Cannanore	..	..	74320	61235	39109	23831	73029	5347	1530	897	187988	91310	279298
	Total	175	255	866465	705501	270353	209978	293349	148413	5371	3691	1435713	1067838	2503551

TABLE 30  
Districtwise strength of Schools 1954-55

1	Trivandru	90	145	127576	97792	26200	19860	19875	10756	1319	325	175060	128878	303938
2	Quilon	..	..	117022	104238	31621	24801	27192	15452	443	201	176278	144692	320970
3	Alleppey	60	80	105934	96193	21925	18301	41480	25966	492	424	169891	140964	310855
4	Kottayam	..	..	96590	87252	20833	15078	32144	25528	349	296	151916	128154	280070
5	Ernakulam	..	..	105303	69198	55187	55799	36507	28519	75	88	197072	153604	350676
6	Trichur	..	..	83377	74258	28058	22304	38382	28641	80	150	149897	125353	275250
7	Palghat	35	50	77992	68712	31109	27791	15142	6267	203	323	124481	103143	227624
8	Kozhikode	..	..	10027	75591	37852	22730	15167	6852	1007	1039	154300	106212	260512
9	Cannanore	..	..	85439	63667	39303	25321	12972	5564	1824	1047	139538	95599	235137
	Total	185	275	901507	736901	292083	231985	238861	153545	5792	3893	1438433	1126599	2565032

**TABLE 31**  
**Districtwise Strength of Schools 1955-56**

Sl. No.	District	Nursery Schools		Lower Primary Schools		Upper Primary Schools		High Schools		Other Schools		All Schools		Total
		Boys	Girls	Boys	Girls	Boys	Girls	Boys	Girls	Boys	Girls	Boys	Girls	
(1)	(2)	(3)	(4)	(5)	(6)	(7)	(8)	(9)	(10)	(11)	(12)	(13)	(14)	(15)
1	Trivandrum	100	150	129827	99693	27110	20170	20117	10921	1313	382	178467	131316	309783
2	Quilon	..	..	121581	110832	32276	25987	28811	16986	390	175	183058	153980	337038
3	Alleppey	114	97	112370	103176	22943	19275	43741	26971	588	578	179756	150097	329853
4	Kottayam	..	..	99917	88375	21466	17348	37021	25988	366	291	158770	132002	290772
5	Ernakulam	..	..	108603	84942	68731	42151	40411	34173	275	145	218020	161411	379431
6	Trichur	..	..	86508	76748	29386	23173	40797	31463	76	150	156767	131534	288301
7	Palghat	35	50	80093	62374	31767	27259	17537	7445	218	331	129650	97459	227109
8	Kozhikode	..	..	105953	82532	38738	24393	16775	7721	1218	1035	162684	115681	278365
9	Cannanore	..	..	87776	66328	42635	27365	14913	6569	1928	1156	147252	101418	248670
	<b>Total</b>	<b>249</b>	<b>297</b>	<b>932628</b>	<b>775000</b>	<b>315052</b>	<b>227121</b>	<b>260123</b>	<b>168237</b>	<b>6372</b>	<b>4243</b>	<b>1514424</b>	<b>1174898</b>	<b>2689322</b>

**TABLE 32**  
**Districtwise Strength of Schools 1956-57**

1	Trivandrum	211	328	150963	112023	26632	18984	17281	8858	4646	737	199633	140930	340563
2	Quilon	50	60	113281	124576	31902	25293	24569	15090	1173	239	170975	165258	336233
3	Alleppey	130	125	122555	113532	24064	20304	38288	23437	2121	836	187158	158234	345392
4	Kottayam	..	..	110730	100390	20158	15640	27858	20573	1301	464	160047	137067	297114
5	Ernakulam	31	37	118634	99215	65119	52050	34058	24322	806	307	218648	175931	394579
6	Trichur	30	40	90732	82805	23824	19730	35484	24939	259	211	150329	127725	278054
7	Palghat	50	70	94759	77390	31129	23285	15234	5973	789	515	141961	107233	249194
8	Kozhikode	..	..	120404	94360	37369	21426	14592	6496	4130	1834	176495	124116	300611
9	Cannanore	..	..	91561	74876	43115	26455	13124	5362	4597	2166	162397	108859	261256
	<b>Total</b>	<b>502</b>	<b>660</b>	<b>1013619</b>	<b>879167</b>	<b>303212</b>	<b>223167</b>	<b>220488</b>	<b>135050</b>	<b>19822</b>	<b>7309</b>	<b>1557643</b>	<b>1245353</b>	<b>2802996</b>

**TABLE 33**  
**Districtwise Strength of Schools 1957-58**

1	Trivandrum	298	227	144191	108952	28672	20742	22207	12954	3240	1151	198608	144026	342634
2	Quilon	159	153	128629	124177	37923	30524	33459	19784	1079	425	201249	175063	376312
3	Alleppey	161	165	119452	110199	27982	23146	51303	34527	1615	1153	200513	169190	369703
4	Kottayam	..	..	117059	98247	22336	17891	37317	26634	902	596	177414	143368	320782
5	Ernakulam	69	86	113618	91714	68667	67328	43679	35029	568	417	226601	194574	421175
6	Trichur	60	102	78410	72953	28018	23451	44727	31735	187	277	151402	128518	279920
7	Palghat	50	70	96539	79478	36190	27969	22202	9865	511	490	155492	117872	273364
8	Kozhikode	..	..	117709	93973	44602	29083	24185	11197	3218	2443	189714	136696	326410
9	Cannanore	..	..	78985	70390	41956	25834	17296	8315	6092	3430	144329	107969	252298
	<b>Total</b>	<b>797</b>	<b>803</b>	<b>994592</b>	<b>850083</b>	<b>336146</b>	<b>265968</b>	<b>296375</b>	<b>190040</b>	<b>17412</b>	<b>10382</b>	<b>1645322</b>	<b>1317276</b>	<b>2962598</b>

**TABLE 34**  
**Districtwise Strength of Schools 1958-59**

1	Trivandrum	312	270	125908	105057	25224	16706	37746	28142	3037	1747	192227	151922	344149
2	Quilon	214	167	148315	140400	27758	20724	34451	23904	590	278	211328	185473	396801
3	Alleppey	138	123	122825	113328	29318	21790	53626	38518	1177	1061	207084	174820	381904
4	Kottayam	..	..	113789	103215	19583	14785	37483	30600	686	593	171541	149193	320734
5	Ernakulam	69	80	118969	100423	60106	64081	47401	39924	460	325	227005	204833	431838
6	Trichur	90	102	91422	81100	24191	19130	47353	37305	140	243	163196	137880	301076
7	Palghat	50	70	87350	761706	26827	20635	24088	12561	524	440	138839	105412	244251
8	Kozhikode	..	..	135778	107577	48739	28420	27657	13683	2207	1857	214381	151537	365918
9	Cannanore	..	..	93054	71443	44627	29015	19612	9254	4467	2411	161760	112123	273883
	<b>Total</b>	<b>873</b>	<b>812</b>	<b>1037410</b>	<b>894249</b>	<b>306373</b>	<b>235286</b>	<b>329417</b>	<b>233891</b>	<b>13288</b>	<b>8953</b>	<b>1687361</b>	<b>1373193</b>	<b>3060554</b>

TABLE 35  
Districtwise Strength of Schools 1959-60

Sl. No.	District	Nursery Schools		Lower Primary Schools		Upper Primary Schools		High Schools		Other Schools		All schools		Total
		Boys	Girls	Boys	Girls	Boys	Girls	Boys	Girls	Boys	Girls	Boys	Girls	
1	2	3	4	5	6	7	8	9	10	11	12	13	14	15
1	Trivandrum	312	254	108416	92646	34960	23479	48967	35650	2567	1507	195222	153536	348758
2	Quilon	214	158	124795	111513	36555	28962	43475	28901	674	410	205713	169944	375657
3	Alleppey	223	116	101906	93509	45106	35672	66288	48640	825	889	214348	178826	393174
4	Kottayam	..	..	100696	91020	27410	22001	43093	34277	504	543	171703	147841	319544
5	Ernakulam	70	75	104563	94147	83743	95199	57709	46089	323	387	246408	235897	482305
6	Trichur	90	96	80847	71416	34502	29179	56732	39978	937	992	173108	141661	314769
7	Palghat	63	52	74596	60096	37137	28774	29805	16191	375	320	141976	105433	247409
8	Kozhikode	..	..	120666	95303	68198	43886	33595	16873	1394	1315	223053	157377	381230
9	Cannanore	..	..	79658	63205	63175	44264	23699	11360	2615	1952	169147	120781	289928
	Total	972	751	896143	772855	430786	351416	403363	277959	10214	8315	1741478	1411296	3152774

TABLE 36

Districtwise Strength of Schools 1960-61

1	Trivandrum	375	296	101700	91892	38509	28875	68920	72399	3083	2518	212587	195980	408567
2	Quilon	417	369	126873	113496	41767	27713	48114	36527	880	421	218051	178526	396577
3	Alleppey	265	296	94580	86495	52709	43635	74128	64740	1150	1105	222882	196271	429153
4	Kottayam	30	35	99283	90597	26019	18273	47759	41025	542	528	173633	150458	324091
5	Ernakulam	68	78	104524	104789	80979	86653	62566	55898	393	383	248530	247801	496331
6	Trichur	138	190	80309	71543	35151	27741	57839	47177	1214	1241	174651	147892	322547
7	Palghat	85	70	75057	59810	35092	24059	28013	16350	415	331	138662	100620	239282
8	Kozhikode	78	40	12136	97611	69305	42840	34979	20295	1668	1307	227396	162053	389449
9	Cannanore	151	42	80352	63947	64305	41563	27762	16348	3423	2011	175993	123911	299904
	Total	1607	1416	884044	780180	443836	341352	450080	370759	12768	9845	1792385	1503552	3295937

TABLE 37

Students in lower primary/classes by District 1961-62 to 1969-70

Year	Trivandrum	Quilon	Alleppey	Kottayam	Ernakulam	Trichur	Palghat	Kozhikode	Cannanore	State
(1)	(2)	(3)	(4)	(5)	(6)	(7)	(8)	(9)	(10)	(11)
1961-62	236358	264332	245267	219883	245558	212098	187622	314500	218981	2144599
1962-63	232497	271642	246512	221889	255461	212357	189244	329524	225051	2184177
1963-64	255980	248251	247518	231964	280667	247928	209345	333449	233261	2288363
1964-65	246996	299739	270344	246214	289314	247357	214262	359074	250789	2424089
1965-66	259899	306460	269835	251219	298478	268982	216859	375900	273550	2521182
1966-67	268020	316110	278338	265120	324563	273253	229278	393324	277820	2625826
1967-68	272723	321177	274588	269570	326333	278725	236243	423025	278648	2681033
1968-69	288773	316837	278131	278087	321394	279319	248362	353348	284701	2736781
1969-70	290704	324799	278501	276814	315243	282696	260341	449208	290743	2769049

TABLE 38

Students in upper primary classes by district 1961-62 to 1969-70

1961-62	98615	127551	122319	93848	99052	114730	58451	95491	75947	886004
1962-63	111504	136326	122678	105126	122902	103497	63862	98396	83075	947366
1963-64	111457	135747	128641	114049	140204	97841	47980	107961	84824	968704
1964-65	120373	142085	138331	114356	123835	103876	66889	101388	87028	998161
1965-66	114678	144661	138959	119531	137842	103692	67156	109329	95663	103151
1966-67	118330	150182	141938	122991	131613	110743	72083	115397	99216	1062853
1967-68	123233	153880	142879	128083	135485	119637	73764	122142	102728	1104831
1968-69	135443	161769	148079	132217	140526	122584	84827	136562	112164	1176039
1969-70	142116	154749	160096	137216	145026	128870	91190	147444	113607	1220314

TABLE-39

## Students in Secondary classes by district 1961-62 to 1969-70

Year	Trivandrum	Quilon	Alleppey	Kottayam	Ernakulam	Trichur	Palghat	Kozhikode	Cannanore	State
(1)	(2)	(3)	(4)	(5)	(6)	(7)	(8)	(9)	(10) *	(11)
1961-62	51443	66153	69177	52594	48894	45974	29723	34374	29955	428287
1962-63	66148	65449	84036	58516	61726	50914	26922	43417	33436	490564
1963-64	67940	82692	90026	62780	62185	57689	32750	46825	36063	538950
1964-65	70981	91555	96507	67956	66196	64014	35611	48596	41049	582765
1965-66	75131	96682	100438	70256	72554	66414	37359	52577	43732	615143
1966-67	78364	105670	101501	76393	72775	67578	37583	53465	46630	639959
1967-68	80471	107364	104582	80080	79388	70903	38035	56465	48485	666763
1968-69	87199	111418	109028	83963	83972	72910	40793	60094	53007	702384
1969-70	87720	108006	109398	81929	87053	72765	43522	65418	53479	709290

TABLE-40

## Enrolment in classes I-IV by sex in Kerala 1956-57 to 1970-71

Year	Enrolment in classes								Total	Percentage of annual increase
	I		II		III		IV			
	Boys	Girls	Boys	Girls	Boys	Girls	Boys	Girls		
1	2	3	4	5	6	7	8	9	10	11
1956-57	296096	258403	258026	221168	221823	186439	190803	158366	1791124	..
1957-58	326017	275206	261021	221416	228823	186863	194789	157592	1851718	3.38
1958-59	327350	293107	274460	241724	238351	202107	211368	177437	1965904	6.17
1959-60	305548	276041	286906	252944	248664	213543	223501	192689	1999836	1.73
1960-61	321364	292025	275437	242696	256698	221903	229093	193014	2032230	3.47
1961-62	346614	315770	288798	257998	258480	224781	243812	208346	2144599	5.53
1962-63	343678	313640	300177	267922	267029	233744	247368	210619	2184177	1.81
1963-64	367165	333539	316834	275574	277609	242751	257585	217306	2288363	4.55
1964-65	393347	350988	325587	288513	298799	263188	270817	232850	2424089	5.93
1965-66	399377	356920	353968	315221	307428	267503	280946	239779	2521182	4.00
1966-67	414817	370600	360433	320696	327950	209607	290483	250240	2625826	4.15
1967-68	411735	371562	369940	328062	335147	302609	300467	261511	2681033	..
1968-69	418406	378873	365244	330333	342557	308349	310978	282041	2736781	..
1969-70	414884	376983	378455	333805	346947	310322	323694	289959	2775049	..
1970-71	420693	379777	375967	339454	351983	316948	328335	295388	..	..

TABLE-41

## Enrolment in classes V-VII by sex in Kerala 1956-57 to 1970-71

Year	Enrolment						Total	Percentage of annual increase
	V		VI		VII			
	Boys	Girls	Boys	Girls	Boys	Girls		
1	2	3	4	5	6	7	8	9
1956-57	153914	122991	111120	80264	91152	63327	622768	..
1957-58	161425	130902	114493	77725	94034	65547	644126	3.43
1958-59	170705	137204	125915	93008	100697	72021	699550	8.60
1959-60	200386	160649	134363	101126	111951	76385	784860	2.70
1960-61	198476	160183	157903	121453	150107	112485	900607	1.35
1961-62	187789	152806	160598	119554	150723	114534	886004	1.62
1962-63	206063	167002	173375	135707	149156	116063	947366	6.93
1963-64	209043	171653	178485	137646	153785	118087	968704	2.20
1964-65	214034	174010	184993	146587	154975	123562	998161	3.04
1965-66	224122	181547	187630	147193	163252	127767	1031511	3.34
1966-67	232664	190924	192278	154073	162822	130092	1062853	3.04
1967-68	241921	198836	200320	159775	169264	134715	104831	3.99
1968-69	262431	220237	206402	170108	171940	144929	1176039	6.45
1969-70	266397	229822	216596	182680	175722	149097	1220314	3.76
1970-71	276466	236097	225849	189139	182996	155716	..	..

TABLE-42

## Enrolment in Classes VIII-X by Sex in Kerala 1956-57 to 1970-1971

Year	Enrolment						Total	Percentage annual increase
	VIII		IX		X			
	Boys	Girls	Boys	Girls	Boys	Girls		
(1)	(2)	(3)	(4)	(5)	(6)	(7)	(8)	(9)
1956-57	74376	50478	49366	29255	40731	23481	267687	..
1957-68	74907	55374	52284	32258	40214	23995	279032	4.24
1958-59	83764	58412	58857	38730	46072	27970	313805	12.46
1959-60	83862	58067	67322	35753	51105	25514	321623	17.20
							259807	
1960-61	90280	63035	62210	42170	45224	29071	331990	27.78
1961-62	132415	99327	68857	47960	48057	31671	428287	29.00
1962-63	134040	105118	99714	70735	47619	33338	490564	14.53
1963-64	135417	105469	104468	84136	65514	43946	538950	9.88
1964-65	136824	110212	113482	90891	75868	55488	582765	8.13
1965-66	137440	110687	116697	94063	86912	69344	615143	5.55
1966-67	144747	118543	120597	97748	87147	71177	639959	4.03
1967-68	149972	124165	122922	103983	90342	75389	666773	4.19
1968-69	157403	132682	129624	110865	92106	79704	702384	5.34
1969-70	160479	137633	134825	116572	85954	73822	709285	9.83
1970-71	166237	142460	138220	121260	84898	71649	..	..

Standard XI	Boys	Girls
1956-57	33258	16688
1957-58	42833	24237
1958-59	(28656)	(16103)
	27385	15568
1959-60	16684	9519

TABLE 43

## Enrolment in Classes I to X in Kerala 1956-57 to 1971-72

Total	Enrolment										Total	Percentage annual increase
	I	II	III	IV	V	VI	VII	VIII	IX	X		
	(2)	(3)	(4)	(5)	(6)	(7)	(8)	(9)	(10)	(11)		
1956-57	554499	479194	408262	349169	276905	191384	154479	124854	78621	64212	2681579	..
1957-58	601223	482437	415686	349169	292327	192218	159531	130281	84542	64209	2774876	3.48
1958-59	620457	516184	440458	388805	307909	218923	172718	142176	97587	74042	2979252	7.37
1959-60	570753	533572	459029	400686	344544	391117	152993	114906	86235	58666	3112501	4.47
1960-61	613389	518133	478601	422107	358659	279356	262592	153315	104380	74295	3264827	4.89
1961-62	662384	546796	483261	452158	340595	280152	265257	231742	116817	79728	3458890	3.94
1962-63	657318	564099	500733	457987	373065	309082	265219	239158	170449	80957	3618067	4.62
1963-64	700704	592408	520360	471891	380701	316131	271872	240886	188604	109460	3796017	4.92
1964-65	744335	614100	561987	503667	388044	331580	278537	247036	204373	131356	4005015	5.51
1965-66	756337	669189	574931	520725	405669	334823	291019	248127	210760	156258	4167836	4.06
1966-67	785417	681129	618557	540723	423588	34635	292914	263290	218345	158324	4328638	3.86
1967-68	783297	698002	637756	561978	440757	360095	303979	274137	226905	165731	4452637	2.86
1968-69	797279	695577	650906	593019	482668	376510	316861	290085	240489	171810	4615204	3.65
1969-70	791867	706260	657269	613653	496219	329276	324819	298112	251397	159781	4698653	(1.81)
1970-71	800470	715429	668931	623723	552163	414988	338712	308697	259480	156547	4799539	2.15
1971-72	848963	725133	682615	641700	533180	435544	3.2698	326160	265925	158113	4979731	3.75

TABLE 44  
Enrolment in Lower Primary Classes ( I to IV) by sex and age-groups 1956-57 to 1964-65

Year	Age-group															
	Below 6		6-10		10-16		13-16		16-18		18-21		21 and above		Total	
	Boys	Girls	Boys	Girls	Boys	Girls	Boys	Girls	Boys	Girls	Boys	Girls	Boys	Girls	Boys	Girls
(1)	(2)	(3)	(4)	(5)	(6)	(7)	(8)	(9)	(10)	(11)	(12)	(13)	(14)	(15)	(16)	(17)
1956-57	154671	140215	706139	602935	100206	78106	5631	3076	101	41	..	..	..	..	966743	824376
1957-58	149058	134644	758527	627967	93301	75903	4223	2536	32	27	..	..	..	..	1010641	841077
1958-59	81049	73948	829896	732315	133848	104111	6736	4001	..	..	..	..	..	..	1051529	914375
1959-60	31736	27879	830041	742991	172392	142128	10437	6341	77	18	..	..	..	..	1044683	919357
1960-61	2046	1773	875343	790574	138259	146077	16592	11062	352	152	..	..	..	..	1082592	949638
1961-62	1749	1333	845789	765060	270964	227874	18307	12418	390	158	5	2	..	..	1137704	1006895
1962-63	1727	1410	859661	777619	275933	233547	20352	13135	519	195	10	19	..	..	1158252	1025925
1963-64	41150	38103	917323	841155	218072	181648	12006	7878	136	85	1	1	..	..	1219193	1069170
1964-65	153844	134076	921633	827603	193972	164806	13929	8999	120	55	..	..	..	..	1288550	1135539

TABLE 45  
Enrolment in upper Primary Classes ( V to VII) by Sex and age groups 1956-57 to 1964-65.

Year	Age groups														Total	
	6-10		10-13		13-16		16-18		18-21		21 & above		Total			
	Boys	Girls	Boys	Girls	Boys	Girls	Boys	Girls	Boys	Girls	Boys	Girls	Boys	Girls		
(1)	(2)	(3)	(4)	(5)	(6)	(7)	(8)	(9)	(10)	(11)	(12)	(13)	(14)	(15)		
1956-1957	68796	57370	227567	171690	56821	36043	2821	1424	181	55	..	..	536186	266582		
1957-1958	65026	45432	241826	183064	59647	39188	3250	1392	203	98	..	..	369952	274174		
1858-1959	52602	45799	269624	210815	71182	43711	3683	1820	226	88	..	..	397317	302233		
1959-1960	30820	24330	325846	256088	138214	92463	12303	6685	1263	631	7	4	508453	380201		
1960-1961	28567	26490	328382	271304	134313	87960	13175	7538	2049	829	..	..	506486	394121		
1961-1962	12034	12125	290534	234449	173541	125762	19725	12634	3211	1896	65	28	499110	386894		
1962-1963	13701	13857	309272	253683	181176	135162	20304	14159	3595	1876	46	35	528594	418772		
1963-1964	23449	22228	359543	288123	143342	107443	13367	8690	1604	889	13	13	441318	427336		
1964-1965	37333	30420	353744	313132	149363	102453	12202	7295	1351	853	9	6	554002	444159		

TABLE 46  
Enrolment in High School classes (VIII-X) by sex and age-groups 1956-57 to 1964-65

1956-1957	..	..	32349	23164	97062	64206	27185	12805	7489	2929	388	110	164473	103214
1957-1963	..	..	29870	25699	103781	68706	27104	14091	6352	3035	298	96	167405	111627
1958-1959	49	106	34959	25438	114353	79317	30925	16280	8033	3826	374	145	188693	125112
1959-1960	..	..	10415	7124	88660	63043	40580	24042	15984	7958	1366	635	157005	102802
1960-1961	..	..	8749	7174	106564	75151	56941	37224	23232	13664	2278	1063	197714	134276
1961-1962	..	..	9090	7995	136199	102127	70971	48389	29834	18697	3235	1750	249329	178958
1962-1963	..	..	9493	8810	148821	117969	85001	57554	34087	22653	3971	2205	281373	209191
1963-1964	..	..	21371	19287	137043	144287	69669	51435	25179	17270	2137	1272	305399	233551
1964-1965	..	..	24586	23128	193413	151686	75209	56843	29797	22631	3169	2303	326174	256591

TABLE 47

## Districtwise Distribution of Teachers in Schools-1950-51

Sl. No.	District	Nursery Schools		Lower Primary Schools		Upper Primary Schools		High Schools		Other Schools		All Schools		Total
		Men	Women	Men	Women	Men	Women	Men	Women	Men	Women	Men	Women	
(1)	(2)	(3)	(4)	(5)	(6)	(7)	(8)	(9)	(10)	(11)	(12)	(13)	(14)	(15)
1	Trivandrum	..	..	6719	1493	904	151	981	242	26	4	8630	1995	10325
2	Quilon	..	..	1957	1199	783	553	946	260	36	9	3722	2021	5743
3	Alleppey	..	..	1986	1703	932	632	1399	532	25	11	4402	2378	7280
4	Kottayam	..	..	1628	1796	760	726	1311	695	21	5	3723	3224	6947
5	Ernakulam	..	..	1858	863	1676	1431	1134	737	3	..	4671	3136	7857
6	Trichur	..	..	1733	1941	843	317	1368	1026	2	2	3946	3786	7732
7	Palghat	..	..	2783	1136	1057	524	620	140	14	13	4174	1823	6297
8	Kozhikode	..	..	4209	1316	1323	588	544	250	45	37	6121	2196	8317
9	Cannanore	..	..	3377	993	1265	419	442	181	81	10	5165	1603	5768
	Total	..	..	26250	12562	9593	5841	3745	4118	266	91	44854	22612	67466

TABLE 48

## Districtwise Distribution of Teachers in Schools-1951-52

1	Trivandrum	1	2	6680	1549	921	176	967	265	24	7	8593	1999	10592
2	Quilon	..	..	2004	1249	785	585	973	339	33	8	3795	2181	5976
3	Alleppey	..	2	2015	1720	984	707	1512	554	37	10	4548	2993	7541
4	Kottayam	..	..	1643	1834	810	650	1361	1067	24	16	3838	8567	7405
5	Ernakulam	..	..	1718	1058	2026	1530	1213	857	7	1	4969	3496	8465
6	Trichur	..	..	2338	2416	800	842	1372	1073	2	2	4512	4333	8845
7	Palghat	..	1	2939	1161	1190	563	636	148	13	15	4778	1888	6666
8	Kozhikode	..	..	4451	1192	1325	625	606	272	45	37	6468	2126	8594
9	Cannanore	..	..	4004	1015	1525	487	441	195	71	14	6041	1711	7752
	Total	1	5	27792	13194	10407	6215	9086	4770	256	110	47542	24294	71836

TABLE 49

## Districtwise Distribution of Teachers in Schools-1952-53

1	Trivandrum	1	2	6702	1579	948	192	963	298	24	7	8638	2078	10710
2	Quilon	..	..	2076	1362	840	625	1056	370	32	9	4004	2366	6376
3	Alleppey	..	2	1987	1791	938	699	1745	661	33	10	4703	3163	7864
4	Kottayam	..	..	1589	2009	784	700	1401	731	23	17	3797	3457	7259
5	Ernakulam	..	..	1774	1120	2012	1760	1272	859	8	4	5066	3743	8807
6	Trichur	..	..	2424	2511	867	850	1468	1133	2	2	4761	4496	9251
7	Palghat	..	2	3077	1235	1238	704	688	174	14	19	5017	2134	7151
8	Kozhikode	..	..	4527	1360	1456	680	633	280	47	38	6663	2358	9021
9	Cannanore	..	..	4293	1118	1793	560	452	197	74	14	6612	1889	8506
	Total	1	6	28449	14085	10376	6770	9678	4703	257	120	49261	25684	74945

TABLE 50

## Districtwise Distribution of Teachers in Schools-1953-54

1	Trivandrum	2	2	6667	1595	977	207	991	312	31	8	8668	2124	10792
2	Quilon	..	..	2099	1426	913	666	1126	379	28	5	4166	2476	6642
3	Alleppey	..	2	1969	1830	965	750	1750	707	33	13	4717	3302	8019
4	Kottayam	..	..	1672	1971	715	728	1402	761	34	17	3523	3477	7300
5	Ernakulam	..	..	1850	1171	2197	2021	1370	955	8	4	5425	4151	9576
6	Trichur	..	..	2448	2608	865	870	1474	1138	3	4	4790	4620	9410
7	Palghat	..	2	2950	1358	1401	770	737	183	16	18	5104	2331	7435
8	Kozhikode	..	..	4621	1399	1552	719	661	300	47	37	6881	2455	9336
9	Cannanore	..	..	4448	1074	1879	650	473	203	68	15	6868	1942	8810
	Total	2	6	28724	14432	11464	7381	9984	4938	268	121	50442	26878	77320

TABLE 51  
Districtwise Distribution of Teachers in Schools-1954-55

Sl. No.	District	Nursery Schools		Lower Primary Schools		Upper Primary Schools		High Schools		Other Schools		All Schools		Total
		Men	Women	Men	Women	Men	Women	Men	Women	Men	Women	Men	Women	
(1)	(2)	(3)	(4)	(5)	(6)	(7)	(8)	(9)	(10)	(11)	(12)	(13)	(14)	(15)
1	Trivandrum	2	2	6681	1617	961	219	863	379	31	8	8538	2225	10763
2	Quilon	..	..	2152	1471	948	722	1189	415	29	7	4318	2615	6933
3	Alleppey	..	2	2011	1958	976	772	1816	765	35	18	4838	3515	8353
4	Kottayam	..	..	1750	2168	825	748	1416	779	23	17	4014	3712	7726
5	Ernakulam	..	..	1819	1222	2141	1965	1399	1110	7	5	5366	4302	9668
6	Trichur	..	..	2397	2574	975	1144	1487	1115	9	8	4868	4841	9709
7	Palghat	..	2	3375	1555	1462	746	780	205	19	18	5606	2526	8132
8	Kozhikode	..	..	4832	1445	1670	790	665	309	48	40	7215	2584	9799
9	Cannanore	..	..	4339	1102	2450	647	468	208	78	16	7335	1973	9308
	Total	2	6	29356	15112	12408	7753	10053	5285	279	137	52098	28293	80391

TABLE 52

District-wise Distribution of Teachers in Schools-1955-56

1	Trivandrum	2	2	6709	1672	938	294	872	412	30	9	8551	2389	10940
2	Quilon	..	..	2209	1670	988	725	1372	476	29	4	3598	2875	7473
3	Alleppey	1	2	2085	2005	1000	791	1877	836	39	18	5001	3652	8653
4	Kottayam	..	..	1772	2371	873	808	1531	1128	24	18	4200	4325	8525
5	Ernakulam	..	..	1513	1560	2427	1890	1478	1114	13	8	5431	4572	10003
6	Trichur	..	..	2543	2727	1005	1360	1545	1146	9	8	5102	5241	10343
7	Palghat	..	2	3432	1701	1641	784	809	240	22	18	5904	2745	8649
8	Kozhikode	..	..	5076	1525	1652	936	700	329	51	40	7479	2830	10309
9	Cannanore	..	..	4292	1169	1910	771	540	236	111	17	6853	2193	9046
	Total	3	6	29631	16400	12434	8359	10724	5917	328	140	53119	30822	83941

TABLE 53

District-wise Distribution of Teachers in Schools-1956-57

1	Trivandrum	6	14	6288	1727	933	244	927	440	86	22	8240	2447	10687
2	Quilon	..	9	2178	1818	1081	644	1320	488	70	11	4649	2970	7619
3	Alleppey	..	12	1958	2181	1052	764	1913	887	96	31	5019	3875	8894
4	Kottayam	..	..	1736	2371	865	642	1318	800	63	23	3982	3836	7818
5	Ernakulam	..	5	1811	1648	2453	1748	1379	1067	37	9	5680	4477	10157
6	Trichur	..	4	2119	2912	875	826	1512	1132	23	10	4529	4884	9413
7	Palghat	..	4	3600	1913	1477	615	827	224	57	28	5961	2784	8745
8	Kozhikode	..	..	4866	1610	1613	737	694	328	151	50	7324	2725	10049
9	Cannanore	..	..	3751	1351	1833	691	534	235	242	26	6410	2303	8713
	Total	6	48	28307	17531	12232	6911	10424	5601	825	210	51794	30301	82095

TABLE 54

District-wise Distribution of Teachers in Schools-1957-58

1	Trivandrum	1	14	6623	1916	975	260	1007	529	90	30	8696	2749	11445
2	Quilon	..	9	2319	2248	1302	725	1543	569	78	10	5242	3561	8803
3	Alleppey	..	12	2047	1264	1143	832	2189	1059	102	36	5481	3203	8684
4	Kottayam	..	..	1998	2779	955	649	1697	872	87	40	4737	4340	9077
5	Ernakulam	..	5	1633	1716	2487	1986	1683	1282	35	15	5838	5004	10842
6	Trichur	..	4	1963	2776	978	824	1588	1278	17	10	4546	4892	9438
7	Palghat	..	4	3820	2151	1545	668	1039	313	61	34	6465	3170	9635
8	Kozhikode	..	..	5277	1875	1757	774	991	419	174	59	8199	3127	11326
9	Cannanore	..	..	3407	1424	1890	626	698	313	284	30	6279	2393	8672
	Total	1	48	29087	18149	13032	7344	12435	6634	928	264	55483	32439	87922



TABLE 55

## District-wise Distribution of Teachers in Schools-1958-59

Sl. No.	District	Nursery Schools		Lower Primary Schools		Upper Primary Schools		High Schools		Other Schools		All Schools		Total
		Men	Women	Men	Women	Men	Women	Men	Women	Men	Women	Men	Women	
(1)	(2)	(3)	(4)	(5)	(6)	(7)	(8)	(9)	(10)	(11)	(12)	(13)	(14)	(15)
1	Trivandrum	..	27	5472	1691	1163	356	1788	650	98	30	8521	2754	11275
2	Quilon	..	17	2276	2268	1505	917	2081	581	52	12	5914	3795	9709
3	Alleppey	..	12	1735	2302	1387	1044	2573	1036	94	43	5789	4437	10226
4	Kottayam	..	..	1748	2711	1032	824	2025	812	64	50	4869	4397	9266
5	Ernakulam	..	5	1604	1642	2642	2325	1945	1200	25	16	6216	5188	11404
6	Trichur	..	6	1810	2832	1026	1079	2001	1175	12	12	4849	5104	9953
7	Palghat	..	6	2620	2120	1526	771	1309	306	54	31	5509	3234	8743
8	Kozhikode	..	..	4359	1903	2402	982	1323	420	112	80	8696	3385	12081
9	Cannanore	..	..	3168	1350	2559	805	989	317	212	46	6928	2518	9446
	Total	..	73	25292	18819	15242	9103	16034	6497	723	320	57291	34812	92103

TABLE 56

## District-wise Distribution of Teachers in Schools - 1959-60

1	Trivandrum	..	24	5663	1854	1277	551	1968	1032	80	19	8988	3500	12488
2	Quilon	..	13	2309	2133	1628	843	1772	879	55	9	5764	3877	9641
3	Alleppey	..	10	1529	2168	1615	1409	2403	1651	99	26	5646	5264	10910
4	Kottayam	..	..	1963	2874	1272	1045	1744	1182	55	26	5034	5127	10161
5	Ernakulam	..	5	1714	1828	3119	2929	1811	1649	24	7	6668	6418	13086
6	Trichur	..	6	1905	3115	1294	1365	1758	1767	21	14	4978	6267	11245
7	Palghat	..	6	2715	1804	1788	956	1218	580	37	18	5758	3364	9122
8	Kozhikode	..	..	5326	2080	3177	1401	1291	666	84	37	9878	4184	14062
9	Cannanore	..	..	3241	1396	3243	1311	908	479	167	16	7559	3202	10761
	Total	..	64	26365	19252	18413	11810	14873	9905	622	172	60273	41203	101476

TABLE 57

## District-wise Distribution of Teachers in Schools-1960-61

1	Trivandrum	..	28	4476	3499	1240	770	1936	1574	49	25	7701	5896	13597
2	Quilon	..	28	2590	1989	1947	1015	2158	1073	44	11	6739	4116	10855
3	Alleppey	..	27	1856	2349	1945	1566	2719	1833	81	25	6601	5800	12401
4	Kottayam	..	2	2242	2633	1301	1070	2154	1369	49	26	5746	5100	10846
5	Ernakulam	..	7	2036	1745	2989	3181	1890	1838	20	8	6935	6779	13714
6	Trichur	..	10	2090	2781	1337	1543	1996	1863	20	14	5443	6211	11654
7	Palghat	..	5	3098	1668	1931	1008	1253	566	26	19	6308	3266	9574
8	Kozhikode	..	3	6056	1804	3561	1561	1460	714	69	36	1146	4118	15264
9	Cannanore	..	7	3985	1274	3466	1453	1108	529	128	17	8687	3280	11967
	Total	..	117	28429	19742	19717	13167	16674	11359	486	181	65306	44566	109872

TABLE—58

## Districtwise Number of Teachers 1961-62

Sl. No.	District	Lower Primary Schools		Upper Primary Schools		High Schools		Training Schools	
		Government	Private	Government	Private	Government	Private	Government	Private
(1)	(2)	(3)	(4)	(5)	(6)	(7)	(8)	(9)	(10)
1	Trivandrum	4033	1948	1320	1180	1722	1857	22	23
2	Quilon	3359	2017	1560	2276	1198	2900	13	38
3	Alleppey	2572	2237	1620	2102	1238	3378	20	43
4	Kottayam	1894	2406	1034	1967	824	2842	12	29
5	Ernakulam	2248	2761	1189	1819	809	2665	23	27
6	Trichur	1610	4820	509	2652	1182	2204	24	14
7	Palghat	1665	3295	972	2631	847	1243	18	17
8	Kozhikode	2629	5958	1674	4357	740	1487	43	11
9	Cannanore	1336	4894	1253	4207	697	1143	30	3
	Total	21346	30336	11131	23191	9257	19718	205	225

TABLE—59  
District-wise Number of Teachers 1962-63

Sl. No.	District	Lower Primary Schools		Upper Primary Schools		High Schools		Training Schools	
		Government	Private	Government	Private	Government	Private	Government	Private
1	2	3	4	5	6	7	8	9	10
1	Trivandrum	2926	1183	1698	1069	1600	1721	67	66
2	Quilon	3387	1890	1512	2257	1602	3628	57	146
3	Alleppey	2944	2474	1854	2001	1434	3557	97	197
4	Kottayam	1937	2327	1291	1935	1022	3345	32	62
5	Ernakulam	2052	2489	1462	1801	1657	3190	51	31
6	Trichur	1323	4090	415	2316	1529	2302	25	9
7	Palghat	1580	3055	1295	3161	899	1422	32	16
8	Kozhikode	2690	5318	1729	2511	850	1182	29	12
9	Cannanore	1291	5392	1729	4335	864	1967	57	16
	Total	20130	28218	12985	21386	11457	22314	447	513

TABLE—60

District-wise Number of Teachers 1963-64

1	Trivandrum	2295	1071	1969	1389	2047	1887	69	69
2	Quilon	3136	2067	1477	1953	1666	3158	81	152
3	Alleppey	2627	2428	1565	1956	1443	3934	68	125
4	Kottayam	1798	2309	1392	2142	964	3322	34	77
5	Ernakulam	2532	2714	1475	1925	1332	2927	61	65
6	Trichur	1459	4240	567	2656	1543	2642	37	32
7	Palghat	1396	3075	739	2449	1353	1580	39	17
8	Kozhikode	2764	4595	1706	4158	1216	1498	54	34
9	Cannanore	1424	5018	1259	4164	930	1272	75	8
	Total	19431	27517	12149	23792	12496	22220	518	579

TABLE—61

Districtwise number of teachers 1964-65

1	Trivandrum	3018	1176	1638	1162	2198	2146	81	79
2	Quilon	2633	1881	2105	2586	1538	3173	82	124
3	Alleppey	2376	2318	1818	1943	1562	4200	59	133
4	Kottayam	1858	2217	1373	2134	1141	3574	36	82
5	Ernakulam	2276	2766	1314	2023	1303	3424	83	74
6	Trichur	1146	3603	776	3745	1579	2782	41	38
7	Palghat	1503	3024	1215	2799	959	1327	42	28
8	Kozhikode	2796	5733	1711	3979	1315	1894	53	39
9	Cannanore	1152	5048	1260	3902	1113	1378	79	11
	Total	18758	27769	13190	24273	12708	23898	556	608

TABLE—62

Districtwise number of teachers 1965-66

1	Trivandrum	3032	1099	2035	1280	2335	2219	92	80
2	Quilon	3141	1941	1661	2173	1800	3960	78	135
3	Alleppey	2438	2069	1833	2674	1557	4302	75	133
4	Kottayam	1761	2387	1424	2207	1185	3673	39	93
5	Ernakulam	2262	2739	1617	2123	1333	3394	87	79
6	Trichur	1337	4664	610	2815	1724	3003	50	38
7	Palghat	1621	3093	1107	2664	1133	1470	42	30
8	Kozhikode	2868	5411	1796	4220	1377	1735	64	42
9	Cannanore	1688	4467	1342	4097	1236	1538	69	17
	Total	20148	27870	13425	24253	13680	25294	596	647

TABLE—63

Districtwise number of teachers 1966-67

1	Trivandrum	3044	1245	1932	1313	2438	2412	87	80
2	Quilon	3213	2085	1585	2412	2074	4302	77	132
3	Alleppey	1679	4782	1619	2038	1679	4782	73	159
4	Kottayam	1732	2406	1242	2218	1382	2925	40	94
5	Ernakulam	2236	2930	1385	2079	1445	4262	91	76
6	Trichur	1561	4709	706	2550	1855	3379	54	50
7	Palghat	1588	3204	1100	2596	1128	1614	44	35
8	Kozhikode	2957	5610	1943	4317	1502	1870	67	48
9	Cannanore	1547	4417	1393	4160	1346	1667	90	26
	Total	19557	31388	12905	23683	14849	27213	623	700

TABLE—64  
Districtwise number of teachers 1967-68

Sl.No.	Districts	Lower primary schools		Upper primary schools		High schools		Training schools	
		Government	Private	Government	Private	Government	Private	Government	Private
1	2	3	4	5	6	7	8	9	10
1	Trivandrum	3122	1285	2100	1405	2497	2547	89	87
2	Quilon	3307	2235	1642	2504	2162	4337	68	134
3	Alleppey	2270	2181	1685	2093	1793	4903	91	159
4	Kottayam	1776	2566	1278	2199	1355	4113	38	95
5	Ernakulam	2417	2925	1319	2405	1660	4165	89	67
6	Trichur	1744	4646	694	2404	2050	3425	52	50
7	Palghat	1648	3262	1144	2825	1188	1569	41	25
8	Kozhikode	2924	5976	1757	4519	1646	2086	65	50
9	Cannanore	1469	4515	1387	4343	1220	1638	86	29
Total		20677	29591	12976	24697	15571	28783	619	746

TABLE—65  
Number of Teachers 1968-69

School Section	Government	Private aided	Private un-aided	Total
1	2	3	4	5
High School Section	8859	15,732	401	24,992
Upper Primary Section	14,037	29,382	277	43,696
Lower Primary Section	25,531	36,223	334	62,088
Training Section	262	439	..	701
Total	48,689	81,776	1,012	1,31,477

TABLE—66  
District-wise number of Teachers in Schools 1969-70

Sl. No.	Revenue District	Lower Primary Schools		Upper primary Schools		High Schools		Training Schools	
		Government	Private	Government	Private	Government	Private	Government	Private
1	2	3	4	5	6	7	8	9	10
1	Trivandrum	4321	1735	2475	2391	1541	1535	19	35
2	Quilon	3998	2761	2021	3814	1283	2650	12	74
3	Alleppey	2952	2824	1624	3869	1028	2871	23	67
4	Kottayam	2262	1215	1354	3254	784	2084	22	67
5	Ernakulam	3079	3876	1586	3618	822	2700	25	61
6	Trichur	1864	5379	1333	3823	985	1692	15	50
7	Palghat	2337	4487	1017	2303	681	952	20	24
8	Malappuram	1893	2554	746	952	383	282	16	5
9	Kozhikode	2168	5304	1119	3064	614	985	24	18
10	Cannanore	2110	6178	1138	3325	831	1165	31	12
Total		26984	36313	14413	30413	8952	16916	207	413

TABLE—67  
Districtwise Number of Teachers 1970-71

Sl. No.	Revenue District	High School Section	Upper primary Section	Lower primary section	Total
1	2	3	4	5	6
1	Trivandrum	3192	4813	5607	13,612
2	Quilon	4029	6406	6807	17,842
3	Alleppey	4098	5827	5326	15,251
4	Kottayam	3251	4758	5344	13,353
5	Ernakulam	3362	5431	6845	15,639
6	Trichur	2816	5044	7779	15,640
7	Palghat	1493	2034	5896	9,423
8	Malappuram	975	2328	6658	9,961
9	Kozhikode	1905	3771	8413	14,089
10	Cannanore	2349	4028	9410	15,787
State		27470	44440	68086	1,39,997

TABLE-68

## Teachers in Pre-Primary Schools by Sex 1956-57 to 1969-70

Year	Total Number	Number of Teachers			
		Men		Women	
		Number	Percent	Number	Percent
1	2	3	4	5	6
1956-57	12	..	..	12	100.0
1957-58	41	6	14.6	35	85.4
1958-59	38	9	23.7	29	76.3
1959-60	40	2	5.01	38	95.0
1960-61	39	1	2.6	38	97.4
1961-62	109	1	0.9	108	99.1
1962-63	153	..	..	153	100.0
1963-64	218	..	..	218	100.0
1964-65	309	7	2.3	302	97.7
1965-66	235	13	5.5	222	94.5
1966-67	253	9	3.6	244	96.4
1967-68	250	8	3.2	242	96.8
1968-69	223	7	3.1	216	97.9
1969-70	246	10	4.1	236	95.9

TABLE-69

## Teachers in Lower Primary Schools by sex 1956-57 to 1970-71

Year	Total Number	Men				Women	
		Number		percent		Number	percent
		3	4	5	6		
1956-57	46577	28867	62.0	17710	38.0		
1957-58	44069	26309	59.7	17760	40.3		
1958-59	43344	25337	58.5	18007	41.5		
1959-60	44493	25776	57.9	18717	42.1		
1960-61	46609	26582	57.0	20027	43.0		
1961-62	49405	27570	55.8	21835	44.2		
1962-63	48348	27266	56.4	21082	43.6		
1963-64	48563	27363	56.3	21200	43.7		
1964-65	48056	25740	53.6	22316	46.4		
1965-66	48018	26384	54.9	21634	45.1		
1966-67	48827	26578	54.4	22249	45.6		
1967-68	50262	26337	52.4	23925	47.6		
1968-69	62088	32428	52.2	29660	47.8		
1969-70	65021	33233	51.2	31788	48.8		
1970-71	68086	34513	50.7	33573	49.3		

TABLE 70

## Teachers in Lower Primary Schools by General Education 1956-57 to 1967-68

Year	Total Number	Mtricateates & above		Non-Matriculate	
		Number		Percent	
		3	4	5	6
1956-57	46577	20901	44.9	25676	55.1
1957-58	44069	20298	46.1	23771	53.9
1958-59	43344	19728	45.5	23616	52.7
1959-60	44493	21066	47.3	23427	54.5
1960-61	46609	24042	51.6	22567	48.4
1961-62	49405	26675	54.0	22730	46.0
1962-63	48348	26165	54.0	22325	46.0
1963-64	48563	25238	54.0	22325	46.0
1964-65	48056	28047	58.4	20009	41.6
1965-66	48018	N.A.	N.A.	N.A.	N.A.
1966-67	48827	N.A.	N.A.	N.A.	N.A.
1967-68	50262	31362	62.4	18900	37.6

TABLE—71

## Teachers in Lower Primary Schools by Professional Training 1956-57 to 1970-71

Year	Trained			Untrained	
	Total Number	Number	Percent	Number	Percent
1	2	3	4	5	6
1956-57	46577	43205	92.8	3372	7.2
1957-58	44069	41048	93.1	3021	6.9
1958-59	43344	40409	93.2	2935	6.8
1959-60	44493	41270	92.8	3223	7.2
1960-61	46609	42339	90.8	4270	9.2
1961-62	49405	43700	88.5	5705	11.5
1962-63	48348	43563	90.1	4785	9.9
1963-64	48563	43972	90.5	4591	9.5
1964-65	48056	43830	91.2	4226	8.8
1965-66	48018	45203	94.1	2815	5.9
1966-67	48827	46762	95.8	2065	4.2
1967-68	50262	48575	96.6	1687	3.4
1968-69	62088	59976	96.6	2112	3.4
1969-70	65021	64068	98.5	953	1.5
1970-71	68086	64633	94.9	3453	5.1

TABLE—72

## Teachers in Upper Primary Schools by sex 1956-57 to 1970-71

Year	Total Number	Men		Women	
		Number	Percent	Number	Percent
1	2	3	4	5	6
1956-57	13171	7946	60.3	5225	39.7
1957-58	19653	11953	60.8	7700	39.2
1958-59	25402	14888	58.6	10521	41.4
1959-60	27213	15690	57.7	11523	42.3
1960-61	28699	16391	57.1	12301	42.9
1961-62	31250	17930	57.4	13320	42.6
1962-63	34374	19117	55.6	15257	44.4
1963-64	34500	19245	55.8	15255	44.2
1964-65	34873	20104	54.5	16769	45.5
1965-66	37124	20870	56.3	16254	43.7
1966-67	36588	20290	55.5	16298	44.5
1967-68	37673	21050	55.9	16623	44.1
1968-69	43696	24135	55.2	19561	44.8
1969-70	44865	24374	54.4	20491	45.6
1970-71	44440*	23598	53.2	20841	46.8

\* Provisional Data.

TABLE—73

## Teachers in Upper Primary Schools by General Education 1956-57 to 1967-68

Year	Total Number	Matriulates		Non-Matriculates	
		Number	Percent	Number	Percent
1	2	3	4	5	6
1956-57	13171	8081	61.4	5090	38.6
1957-58	19653	11589	59.0	8064	41.0
1958-59	25402	15378	60.5	10024	39.5
1959-60	27213	16689	61.3	10524	38.7
1960-61	28699	18191	63.4	10508	36.6
1961-62	31250	20330	65.1	10920	34.9
1962-63	34374	21986	64.0	12388	36.0
1963-64	34500	21998	63.8	12502	36.2
1964-65	36873	25767	69.9	11106	30.1
1965-66	37124	N.A.	N.A.	N.A.	N.A.
1966-67	36588	N.A.	N.A.	N.A.	N.A.
1967-68	37673	26420	70.2	11253	29.8

TABLE—74

## Teachers in Upper Primary Schools by Professional Training 1956-57 to 1970-71

Year	Total Number	Trained		Untrained	
		Number	Percent	Number	Percent
1	2	3	4	5	6
1956-57	13171	11254	85.4	1917	14.6
1957-58	19653	16332	83.1	3321	16.9
1958-59	25402	21070	82.9	4332	17.1
1959-60	27213	21983	80.8	5230	19.2
1960-61	28699	22349	77.9	6350	22.1
1961-62	31250	23514	75.2	7736	24.8
1962-63	34374	28675	83.4	5699	16.6
1963-64	34500	28978	84.0	5522	16.0
1964-65	36873	29950	81.2	6923	18.8
1965-66	37124	33111	89.2	4013	10.8
1966-67	36588	33356	90.9	3232	9.1
1967-68	37673	34786	92.3	2887	7.7
1968-69	43696	39666	91.8	4030	9.2
1969-70	44865	43327	96.6	1538	3.4
1970-71	44440	39204	88.3	5236	11.7

TABLE—75

## Teachers in Secondary Schools by sex 1956-57 to 1967-68

Year	Total Number	Men		Women	
		Number	Percent	Number	Percent
1	2	3	4	5	6
1956-57	19405	12454	64.2	6951	35.8
1957-58	20473	12986	63.4	7487	36.6
1958-59	22822	14150	62.0	8672	38.0
1959-60	25141	15371	61.1	9770	38.9
1960-61	26854	16581	61.7	10273	38.3
1961-62	30993	18714	61.6	11679	38.4
1962-63	32930	20727	52.9	12203	37.1
1963-64	33511	20995	62.7	12516	37.3
1964-65	37957	22475	59.2	15482	40.8
1965-66	39097	22745	58.2	16352	41.8
1966-67	43118	24595	57.0	18523	43.0
1967-68	44354	25314	57.1	19040	42.9

TABLE—76

## Teachers in Secondary Schools by General Education 1956-57 to 1967-68

Year	Total Number	Graduates		Non Graduates	
		Number	Percent	Number	Percent
1	2	3	4	5	6
1956-57	19405	6743	34.7	12662	65.3
1957-58	20473	7306	35.7	13167	64.3
1958-59	22822	7964	34.9	14858	65.1
1959-60	25141	8961	35.6	16180	64.4
1960-61	26854	10259	38.2	16595	61.8
1961-62	30393	12459	41.0	17934	59.0
1962-63	32930	14073	42.7	18857	57.3
1963-64	33511	14351	42.8	19160	57.2
1964-65	37957	17139	45.2	20818	54.8
1965-66	39097	N.A.	N.A.	N.A.	N.A.
1966-67	43118	N.A.	N.A.	N.A.	N.A.
1967-68	44354	19808	44.7	24546	55.3

TABLE—77

## Teachers in Secondary Schools by Professional Training 1956-57 to 1967-68

Year	Total Number	Trained		Untrained	
		Number	Percent	Number	Percent
1	2	3	4	5	6
1956-57	19405	14229	73.3	5176	26.7
1957-58	20473	14945	73.0	5527	27.0
1958-59	22822	17047	74.7	5775	25.3
1959-60	25141	18980	75.5	6161	24.5
1960-61	26854	20188	75.2	6666	24.8
1961-62	30393	22272	73.3	8121	26.7
1962-63	32930	25926	78.7	7004	21.3
1963-64	33511	26778	79.9	6733	20.1
1964-65	37957	31125	82.0	6832	18.0
1965-66	39097	33167	84.8	5930	15.2
1966-67	43118	37849	87.8	5269	12.2
1967-68	44354	40595	91.5	3758	8.5

TABLE—78

## Teachers in vocational and Technical Schools by sex 1956-57 to 1967-68

Year	Total Number	Men		Women	
		Number	Percent	Number	Percent
1	2	3	4	5	6
1956-57	349	250	71.6	99	28.4
1957-58	390	290	74.4	100	25.6
1958-59	725	542	74.8	183	25.2
1959-60	972	737	75.8	235	24.2
1960-61	1217	956	78.6	261	21.4
1961-62	1346	1046	77.7	300	22.3
1962-63	1369	1049	76.6	320	23.4
1963-64	1555	1219	78.4	336	21.6
1964-65	2216	1780	80.3	436	19.7
1965-66	N.A.	N.A.	N.A.	N.A.	N.A.
1966-67	N.A.	N.A.	N.A.	N.A.	N.A.
1967-68	2764	2255	82.0	499	18.0

TABLE—79

## Teachers in Special Education by Sex 1956-57 to 1967-68

Year	Total Number	Male		Female	
		Number	Percent	Number	Percent
1	2	3	4	5	6
1956-57	524	467	89.1	57	10.9
1957-58	764	701	91.8	63	8.2
1958-59	269	230	85.5	39	14.5
1959-60	186	135	72.6	51	27.4
1960-61	177	118	66.7	59	33.3
1961-62	186	126	67.7	60	32.3
1962-63	193	127	65.8	66	34.2
1963-64	169	115	68.0	54	32.0
1964-65	109	56	51.4	53	48.6
1965-66	N.A.	N.A.	N.A.	N.A.	N.A.
1966-67	N.A.	N.A.	N.A.	N.A.	N.A.
1967-68	N.A.	N.A.	N.A.	N.A.	N.A.

TABLE 80

## Nursery Training Schools—Number, Enrolment and Out-turn 1956-57 to 1970-71

Year	No. of Schools	Enrolment			Out-turn		
		Men	Women	Total	Men	Women	Total
1	2	3	4	5	6	7	8
1956-57	2	..	61	61	..	..	..
1957-58	2	..	57	57	..	..	..
1958-59	2	..	51	51	..	37	37
1959-60	2	..	46	46	..	37	37
1960-61	2	..	58	58	..	51	51
1961-62	2	..	79	79	..	72	72
1962-63	3	..	118	118	..	83	83
1963-64	3	..	105	105	..	107	107
1964-65	3	..	109	109	..	72	72
1965-66	3	..	101	101	..	111	111
1966-67	3	..	92	92	..	99	99
1967-68	3	..	111	111	..	103	103
1968-69	3	..	109	109	..	88	88
1969-70	3	..	105	105	..	97	97
1970-71	3	..	104	104	..	97	97

TABLE 81

## Teacher's Training Schools—Number, Enrolment and Out-turn 1956-57 to 1969-70

1	2	3	4	5	6	7	8
1956-57	37	3732	2597	6329	1556	1794	3350
1957-58	44	3205	3146	6351	2166	2037	4203
1958-59	53	2320	1882	4202	1716	1574	3290
1959-60	75	3102	2337	5439	1023	732	1755
1960-61	78	3681	2660	6341	1559	1193	2752
1961-62	80	4426	3681	8107	2096	1529	3625
1962-63	80	4404	3999	8403	2687	1724	4411
1963-64	105	5045	6002	11047	2561	2435	4996
1964-65	105	5242	7526	12768	2270	2702	4972
1965-66	105	5222	8630	13852	2263	3535	5798
1966-67	105	5288	9238	14526	1858	2607	4465
1967-68	105	4623	8865	13488	..	..	..
1968-69	105	3523	7064	10587	..	..	..
1969-70	105	2660	4255	6915	..	..	..

TABLE 82

## Wastage in Lower Primary Education in Kerala (Classes I-IV) 1956-57 to 1966-67

Year	Boys				Girls				Total			
	I	II	III	IV	I	II	III	IV	I	II	III	IV
1	2	3	4	5	6	7	8	9	10	11	12	13
1956-57	100	..	..	..	100	..	..	..	100	..	..	..
1957-58	100	88	..	..	100	86	..	..	100	87	..	..
1958-59	100	84	80	..	100	88	78	..	100	86	79	..
1959-60	100	88	76	75	100	86	78	75	100	87	77	75
1960-61	100	90	78	70	100	88	76	70	100	89	77	70
1961-62	100	90	85	74	100	88	81	71	100	89	83	73
1962-63	100	87	83	81	100	85	80	76	100	86	82	79
1963-64	100	92	80	80	100	88	77	74	100	90	79	77
1964-65	100	89	87	78	100	87	84	74	100	88	85	76
1965-66	100	90	84	82	100	90	80	76	100	90	82	79
1966-67	100	90	83	79	100	90	83	75	100	90	83	77



TABLE 83

Wastage in Upper Primary Education (Classes V-VII) in Kerala 1956-57 to 1966-67

Year	Boys				Girls				Total			
	IV	V	VI	VII	IV	V	VI	VII	IV	V	VI	VII
1	2	3	4	5	6	7	8	9	10	11	12	13
1956-57	100	..	..	..	100	..	..	..	100	..	..	..
1957-58	100	85	..	..	100	83	..	..	100	84	..	..
1958-59	100	88	66	..	100	87	59	..	100	87	63	..
1959-60	100	95	69	47	100	91	64	48	100	93	67	48
1960-61	100	89	75	77	100	83	68	71	100	86	72	75
1961-62	100	82	72	71	100	79	62	65	100	81	67	68
1962-63	100	85	76	67	100	80	70	60	100	83	73	64
1963-64	100	85	73	67	100	81	66	61	100	83	70	64
1964-65	100	83	75	64	100	80	70	59	100	82	72	62
1965-66	100	83	73	66	100	78	68	61	100	81	71	64
1966-67	100	83	71	63	100	80	66	60	100	81	69	62

TABLE 84

Wastage in Secondary Education (Classes VIII to X) in Kerala 1956-57 to 1966-67

Year	Boys				Girls				Total			
	VII	VIII	IX	X	VII	VIII	IX	X	VII	VIII	IX	X
1	2	3	4	5	6	7	8	9	10	11	12	13
1956-57	100	..	..	..	100	..	..	..	100	..	..	..
1957-58	100	82	..	..	100	87	..	..	100	84	..	..
1958-59	100	89	65	..	100	89	61	..	100	89	63	..
1959-60	100	83	71	56	100	81	54	40	100	80	65	50
1960-61	100	100	62	48	100	83	59	44	100	76	59	47
1961-62	100	88	76	48	100	88	76	44	100	88	58	45
1962-63	100	89	66	53	100	92	63	44	100	90	65	40
1963-64	100	91	69	44	100	91	73	39	100	91	71	42
1964-65	100	89	76	50	100	93	78	48	100	91	77	50
1965-66	100	89	76	58	100	89	79	60	100	89	78	59
1966-67	100	89	78	57	100	93	79	60	100	90	78	58

TABLE 85

School for the Handicapped in Kerala

Year	Number of Schools			Number of pupils		
	Government	Private	Total	Boys	Girls	Total
1	2	3	4	5	6	7
1956-57	2	..	2	58	1	59
1957-58	5	2	7	219	56	275
1958-59	5	2	7	229	63	292
1959-60	5	2	7	236	74	310
1960-61	5	2	7	246	75	321
1961-62	5	2	7	299	79	378
1962-63	4	2	6	307	78	385
1963-64	5	2	7	310	86	396
1964-65	5	2	7	336	91	427
1965-66	5	2	7	375	101	476
1966-67	5	2	7	350	105	455
1967-68	5	2	7	395	114	509
1968-69	5	2	7	396	130	526
1969-70	5	2	7	408	144	552
1970-71	5	2	7	424	164	588

TABLE 86  
S.S.L.C. Examination Results in Kerala

Year	Number appeared	Number passed	Percentage Pass
1	2	3	4
March 1961	..	..	..
September 1961	..	..	..
March 1962	96181	35925	37.35
September 1962	52341	21920	41.88
March 1963	98025	48666	49.65
September 1963	47710	19143	40.12
March 1964	125225	59884	47.82
September 1964	56135	21302	37.99
March 1965	144007	60460	41.98
September 1965	58457	23658	40.47
March 1966	173805	64835	37.30
September 1966	76478	25366	33.17
March 1967	178242	71338	40.02
September 1967	61720	20504	33.22
March 1968	175493	67462	38.44
September 1968	57671	16667	28.90
March 1969	174612	71472	40.93
September 1969	68930	22213	32.22
March 1970	188555	71568	37.96
September 1970	69853	17548	25.12
April 1971	194117	71460	36.81

TABLE 87  
[T.T.C. Examination Results in Kerala

Year	No. appeared	No. passed	Percentage pass
1	2	3	4
March 1961	..	..	..
September 1961	..	..	..
March 1962	3650	1823	49.95
September 1962	1600	938	58.63
March 1963	3784	2945	77.83
September 1963	2538	1759	69.31
March 1964	4468	3015	67.48
September 1964	1939	1482	76.43
March 1965	6463	3490	53.99
September 1965	2594	1865	71.90
March 1966	7253	3933	54.23
September 1966	3079	1457	47.32
March 1967	8902	3008	33.79
September 1967	5233	3034	57.98
March 1968	9346	3854	41.24
September 1968	6015	3816	63.44
March 1969	9199	2612	28.39
September 1969	6002	1511	25.17
March 1970	7850	2820	35.92
September 1970	12647	5449	43.08

TABLE 88  
Cost per Pupil on Education in Kerala

Year	Primary Education	Secondary Education
1	2	3
	Rs.	Rs.
1963-64	29.39	73.67
1964-65	38.63	76.82
1965-66	40.80	90.37
1966-67	53.35	103.66
1967-68	65.07	114.43
1968-69	72.97	118.07
1969-70	82.32	163.40
1970-71	80.65	175.80

TABLE 89  
Teacher Pupil' ratio on General School  
Education in Kerala

Year	Primary Education	Secondary Education
1	2	3
1963-64	33.57	35.92
1964-65	34.21	36.20
1965-66	34.71	27.80
1966-67	35.20	26.00
1967-68	35.00	27.00
1968-69	44.00	28.00
1969-70	36.00	28.00
1970-71	36.00	26.00

TABLE 90  
Revenue District, Educational Districts & Sub Districts

Revenue District	Educational District	Educational Sub District	
(1)	(2)	(3)	
1 Trivandrum	1 Neyyattinkara	1 Balaramapuram	
		2 Kattakada	
	2 Trivandrum	3 Neyyattinkara	3 Neyyattinkara
			4 Parasala
		5 Trivandrum North	5 Trivandrum North
			6 Trivandrum South
		7 Kaniyapuram	7 Kaniyapuram
			8 Nedumangad
		9 Kilimanoor	9 Kilimanoor
			10 Palode
2 Quilon	4 Quilon	11 Varkala	
		12 Attingal	
	13 Chathannur	13 Chathannur	
		14 Chavara	
	15 Karunagappally	15 Karunagappally	
		16 Kundara	
	17 Quilon	17 Quilon	
		18 Chadayamangalam	
	5 Kottarakara	19 Kottarakara	
		20 Kulakkada	
6 Pathanamthitta	21 Punalur		
	22 Sasthamkotta		
3 Alleppey	7 Alleppey	23 Veliyam	
		24 Adoor	
	8 Mavelikkara	25 Konni	
		26 Kozhencherry	
	9 Thiruvalla	27 Pathanamthitta	
		28 Ranni	
	10 Kottayam	29 Alleppey	
		30 Ambalapuzha	
	4 Kottayam	31 Haripad	
		32 Monkompuzha	
48 Pampadi	33 Thuravoor		
	34 sberthallay		
46 Kottayam	35 Aramula		
	36 Chengannur		
47 Kottayam East	37 Kayamkulam		
	38 Mavelikara		
45 Changanacherry	39 Pandalam		
	40 Mallappally		
44 Vennikulam	41 Pullad		
	42 Thalavadi		
43 Thiruvalla	43 Thiruvalla		
	44 Vennikulam		
42 Thalavadi	45 Changanacherry		
	46 Kottayam		
41 Pullad	47 Kottayam East		
	48 Pampadi		

(1)	(2)	(3)
	11 Palai	49 Vaikom
		50 Kuravilangad
		51 Ramapuram
		52 Palai
		53 Ettumanoor
	12 Kanjirappally	54 Munnar
		55 Peermade
		56 Udumbanchola
		57 Karukachal
5 Ernakulam	13 Ernakulam	58 Kanjirappally
		59 Erattupetta
		60 Tripunithura
		61 Ernakulam
		62 Vypeen
	14 Muvattupuzha	63 Mattancherry
		64 Thodupuzha East
		65 Thodupuzha West
		66 Muvattupuzha
	15 Alwaye	67 Kothamangalam
		68 Kolencherry
		69 Alwaye
		70 North Parur
		71 Ankamaly
6 Trichur	16 Irinjalakuda	72 Perumbavoor
		73 Cranganore
		74 Mala
		75 Chalakudy
	17 Trichur	76 Irinjalakuda
		77 Trichur West
		78 Trichur East
	18 Chawghat	79 Cherpu
		80 Valapad
		81 Mullassery
		82 Chawghat
		83 Kunnankulam
7 Palghat	19 Palghat	84 Wadakkancherry
		85 Chittur
		86 Palghat
		87 Kollengode
		88 Parali
		89 Alathur
		90 Mannarghat
	20 Ottapalam	91 Cheraplacherry
		92 Thrithala
		93 Pattambi
		94 Shoranur
8 Malapuaam	21 Malapuram	95 Ottapalam
		96 Mankada
		97 Perinthalmanna
		98 Nilambur
		99 Arcacode
		100 Manjeri
		101 Malapuram
		102 Kondotty
	22 Tirur	103 Ponnani
		104 Edappal
		105 Tirur
		106 Tanur
		107 Kuttupuram
		108 Parappanangadi
		109 Vengara
9 Kozhikode	23 Kozhikode	110 Tamarassery
		111 Kunnamangalam
		112 Kozhikode Rural
		113 Kozhikode City
		114 Chevayur
		115 Sultan Battery
		116 Vythiri
	24 Badagara	117 Balussery
		118 Meladi
		119 Thodannur
		120 Quilandy
		121 Perumbra
		122 Nadapuram
		123 Kunnumel
		124 Badagara
		125 Chombala

(1)	(2)	(3)
	25 Tellicherry	126 Tellicherry South 127 Chokli 128 Panoor 129 Kuthuparamba 130 Iritty 131 Tellicherry North 132 Manantoddy
10 Cannanore	26 Cannanore	133 Taliparamba North 134 Taliparamba South 135 Sreekanthapuram 136 Madayi 137 Pappinissery 138 Cannanore North 139 Cannanore South
	27 Kasargode	140 Mattannur 141 Manjeswar 142 Kumbala 143 Kasargode 144 Bakal 145 Hosdurg 146 Cheruvathur 147 Payyannur

TABLE 91

## Educational Districtwise Number of Schools 1971-72

<i>Educational District</i>	<i>No. of High Schools</i>	<i>No. of Training Schools</i>	<i>No. of U.P. Schools</i>	<i>No. of L.P. schools</i>
(1)	(2)	(3)	(4)	(5)
1 Neyyattinkara	41	3	56	185
2 Trivandrum	50	3	53	121
3 Attingal	40	3	85	220
4 Quilon	60	5	85	199
5 Kottarakara	54	6	100	298
6 Pathanamthitta	57	4	81	201
7 Alleppey	62	4	92	212
8 Mavelikara	62	7	73	230
9 Thiruvalla	54	7	61	206
10 Kottayam	66	7	65	192
11 Palai	65	4	87	243
12 Kanjirappally	53	2	83	179
13 Ernakulam	69	6	68	171
14 Muvattupuzha	64	4	76	187
15 Alwaye	70	6	77	225
16 Irinjalakuda	52	5	66	173
17 Trichur	54	3	53	139
18 Chawghat	51	2	104	246
19 Palghat	61	4	131	301
20 Ottapalam	34	3	86	249
21 Malappuram	34	2	108	434
22 Tirur	28	3	98	356
23 Kozhikode	58	4	149	358
24 Badagara	39	1	160	492
25 Tellicherry	32	2	141	357
26 Cannanore	40	3	166	409
27 Kasargode	43	2	147	303
<b>Grand Total</b>	<b>1393</b>	<b>105</b>	<b>2551</b>	<b>6886</b>

TABLE 92  
Number of Colleges by Type of Management 1956-57 to 1967-68

Year	Number of Universities	No. of Colleges by type of Management				Colleges exclusively meant for Women
		Government	Private	Total		
1	2	3	4	5	6	
1956-57	1	20	27	47	7	
1957-58	1	25	47	72	12	
1958-59	1	24	51	75	12	
1959-60	1	24	51	75	12	
1960-61	1	24	58	82	12	
1961-62	1	24	62	86	12	
1962-63	1	26	62	88	12	
1963-64	1	26	64	90	12	
1964-65	1	27	96	124	17	
1965-66	1	27	96	124	17	
1966-67	1	27	96	124	17	
1967-68	1	28	121	149	17	

TABLE 93  
Teacher's Training Colleges — Number, Enrolment and Out-turn 1956-57 to 1966-67

Year	No. of Colleges	Enrolment			Out-turn		
		Men	Women	Total	Men	Women	Total
1	2	3	4	5	6	7	8
1956-57	5	462	298	760	N.A.	N.A.	..
1957-58	12	880	492	1372	408*	268*	676*
1958-59	13	997	462	1459	809	462	1271
1959-60	13	1056	461	1517	1018	458	1476
1960-61	18	1290	719	2009	1078	431	1509
1961-62	19	1304	792	2096	1284	718	2002
1962-63	19	1286	879	2165	1316	779	2095
1963-64	19	1222	1123	2345	1284	834	2118
1964-65	19	1045	1262	2307	1226	1117	2343
1965-66	19	1123	1241	2364	1126	1140	2266
1966-67	19	N.A.	N.A.	N.A.	1084	1156	2240

\* September examination results not included.

TABLE 94  
Number of arts and science colleges in Kerala and the number of students 1966-67 to 1971-72

Year	Number of Colleges			Number of Students		
	Government	Private	Total	Government	Private	Total
1	2	3	4	5	6	7
1966-67	13	87	100	15470	97015	112485
1967-68	13	94	107	16767	109884	126651
1968-69	11	104	115	18247	121514	139761
1969-70	13	107	120	20357	122340	142697
1970-71	12	105	117	17828	135606	163437
1971-72	12	105	117	18002	141214	159216

TABLE 95  
Number of Training Colleges in Kerala and Number of Students 1966-67 to 1971-72

1966-67	4	15	19	590	1810	2400
1967-68	4	15	19	587	1808	2395
1968-69	4	15	19	613	1879	2492
1969-70	4	15	19	581	1815	2396
1970-71	4	15	19	529	1830	2359
1971-72	4	15	19	529	1830	2359

TABLE 96

Category wise number of Colleges in the University of Kerala 1969-70 to 1971-72

Sl. No.	Year	Junior Colleges			Arts & Science Colleges			Professional Colleges		
		Government	Private	Total	Government	Private	Total	Government	Private	Total
1	2	3	4	5	6	7	8	9	10	11
1	1969-70	1	24	25	5	47	52	8	17	25
2	1970-71	1	22	23	5	47	52	8	17	25
3	1971-72	Nil	22	22	6	49	55	8	17	25

TABLE 97

Enrolment in Colleges in Kerala and Number of Students per Lakh of Population 1956-57 to 1965-66

Year	Total enrolment	Percentage rise over previous year	Number of Students per Lakh of Population
1	2	3	4
1956-57	28,772	..	..
1957-58	32,167	11.42	..
1958-59	38,483	19.64	..
1959-60	38,132	..	..
1960-61	44,363	15.79	..
1961-62	49,933	12.71	289
1962-63	45,546	..	256
1963-64	67,116	47.36	..
1964-65	120,383	79.40	644
1965-66	179,295	48.94	939

TABLE—98

Enrolment in Colleges according to Faculties 1956-57 to 1965-66.

Enrolment according to Faculties (General, Professional and Special Education)

Year	Arts	Science	Commerce	Education	Engineering and Technology	Medicine	Agriculture	Veterinary	Law	Others	Total
1	2	3	4	5	6	7	8	9	10	11	12
1956-57	6428	17844	1072	760	385	424	126	122	540	1068	28772
1957-58	6428	19628	1282	1382	533	514	200	215	368	1589	32167
1958-59	5939	25957	1611	1469	855	656	236	283	342	1135	38483
1959-60	5004	26076	1751	1529	1162	876	236	332	304	862	38132
1960-61	5262	30390	1928	2035	1553	1133	215	359	437	1051	44363
1961-62	5450	34204	2164	2122	2765	1346	217	298	409	978	49953
1962-63	5900	27515	2232	2192	3198	1544	219	259	486	2001	45546
1963-64	7719	46007	2623	2373	3841	1811	221	235	455	1831	67116
1964-65	10864	94724	3371	2345	4085	2170	224	216	534	1850	120383
1965-66	12567	150869	3722	2405	4276	2791	237	207	530	1690	179295

TABLE—99

Percentage of enrolment in Colleges according to Faculties 1956-57 to 1965-66

1956-57	22.34	62.02	3.73	2.64	1.35	1.47	0.44	0.42	1.88	3.71	100.00
1957-58	20.07	61.02	3.99	4.30	1.66	1.60	0.62	0.67	1.14	4.93	100.00
1958-59	15.43	67.45	4.19	3.82	2.22	1.70	0.61	0.74	0.89	2.95	100.00
1959-60	13.12	68.37	4.59	4.01	3.05	2.30	0.62	0.87	0.80	2.27	100.00
1960-61	11.86	68.50	4.35	4.59	3.50	2.55	0.48	0.81	0.99	2.37	100.00
1961-62	10.91	68.47	4.33	4.25	5.54	2.69	0.43	0.60	0.82	1.96	100.00
1962-63	12.95	60.41	4.90	4.81	7.02	3.39	0.48	0.57	1.07	4.40	100.00
1963-64	11.50	68.54	3.91	3.54	5.72	2.70	0.33	0.35	0.68	2.73	100.00
1964-65	9.02	78.69	2.80	1.95	3.29	1.80	0.19	0.18	0.44	1.54	100.00
1965-66	7.00	84.15	2.08	1.34	2.38	1.56	0.13	0.12	0.30	0.94	100.00

TABLE—100

## Enrolment in Intermediate Classes according to Faculties 1956-57 to 1965-66

Year	Intermediate			Pre-University (Degree)			Pre-Professional		
	Boys	Girls	Total	Boys	Girls	Total	Boys	Girls	Total
1	2	3	4	5	6	7	8	9	10
1956-57	5591	2187	7778	5722	2272	7994	..	..	..
1957-58	..	..	..	7652	3031	10683	535	85	620
1958-59	..	..	..	10147	4275	14422	675	70	745
1959-60	..	..	..	8724	3441	12165	677	71	748
1960-61	..	..	..	10403	4755	15153	956	96	1052
1961-62	..	..	..	12479	5372	18351	317	65	382
1962-63	..	..	..	13586	7154	20740	359	76	435
<b>Pre-Degree</b>									
1963-64	..	..	..	..	..	..	333	82	415
1964-65	..	..	..	..	..	..	313	85	398
1965-66	..	..	..	..	..	..	151	39	190

TABLE—101

## Enrolment in Degree Classes according to Faculties 1956-57 to 1965-66.

Year	Enrolment according to Faculties General Education											
	Arts B.A.											
	First year			Second year			Third year			Total		
1	Boys	Girls	Total	Boys	Girls	Total	Boys	Girls	Total	Boys	Girls	Total
1	2	3	4	5	6	7	8	9	10	11	12	13
1956-57	1357	593	1950	1403	498	1901	33	20	53	2793	1111	3904
1957-58	2189	1191	3380	1950	833	2783	32	31	63	4171	2055	6226
1958-59	806	431	1237	2810	1487	4297	31	24	55	3647	1942	5589
1959-60	1019	598	1617	984	491	1475	883	540	1423	2886	1629	4515
1960-61	1007	544	1551	1071	583	1654	969	487	1456	3047	1614	4661
1961-62	988	621	1609	1013	543	1556	1068	584	1652	3069	1748	4817
1962-63	1321	920	2241	942	595	1537	970	513	1483	3233	2028	5261
1963-64	1884	1388	3272	1271	900	2171	922	580	1502	4077	2868	6945
1964-65	2594	1976	4570	1799	1348	3147	1247	867	2114	5640	4191	9831
1965-66	2106	1666	3772	2395	1881	4276	1723	1301	3024	6224	4848	11072

TABLE 101 (Contd.)

## Enrolment According to faculties—General Education

Year	Science (B.Sc.)											
	First year			Second Year			Third year			Total		
	Boys	Girls	Total	Boys	Girls	Total	Boys	Girls	Total	Boys	Girls	Total
1	14	15	16	17	18	19	20	21	22	23	24	25
1956-57	1542	645	2187	1470	552	2022	34	11	45	3046	1208	4254
1957-58	3813	1822	5635	1767	690	2457	40	9	49	5620	2521	8141
1958-59	2826	1302	4128	4497	1871	6368	43	29	72	7366	3202	10568
1959-60	3431	1747	5178	2774	1273	4047	2447	1139	3586	8652	4159	12811
1960-61	3102	1815	4917	3173	1688	4861	2720	1248	3968	8995	4751	13746
1961-62	3653	1982	5635	2886	1678	4564	3083	1671	4754	9622	5331	14953
1962-63	3842	2264	6106	3320	1901	5221	2755	1647	4402	9917	5812	15729
1963-64	4482	2805	7287	3523	2178	5701	3196	1866	5062	11201	6849	18050
1964-65	5141	3470	8611	4261	2687	6948	3403	2048	5451	12805	8205	21010
1965-66	3700	2684	6384	4557	3233	7790	4214	2629	6843	12471	8546	21017



TABLE--102

## Enrolment in Degree Classes according to Faculties 1956-57 to 1965-66

Year	Enrolment according to faculties (professional and special Education)								
	Commerce (B.Com.)			Education (B.Ed.)			Engineering and Technology (B.Sc. Engg.)		
	Boys	Girls	Total	Boys	Girls	Total	Boys	Girls	Total
1	2	3	4	5	6	7	8	9	10
1956-57	1052	20	1072	462	298	1372	388		388
1957-58	1242	40	1282	880	492	1372	531	2	533
1958-59	1578	33	1611	997	462	1459	812	21	833
1959-60	1710	41	1751	1056	461	1517	1114	32	1146
1960-61	1881	47	1928	1290	719	2009	1477	52	1529
1961-62	2052	43	2095	1304	792	2096	2643	96	2739
1962-63	2051	50	2101	1286	879	2165	3054	118	3172
1963-64	2426	67	2493	1222	1123	2345	3652	155	3807
1964-65	3131	105	3236	1045	1262	2307	3809	212	4021
1965-66	3428	108	3536	1123	1241	2364	4057	151	4208

TABLE--102 (Contd.)

Year	Enrolment according to faculties— Professional and special education											
	Medicine (M.B.B.S.)			Agriculture (B.Sc.)			Veterinary Science (B.V.Sc.)			Law B.L./LLB.		
	Boys	Girls	Total	Boys	Girls	Total	Boys	Girls	Total	Boys	Girls	Total
11	12	13	14	15	16	17	18	19	20	21	22	
1956-57	315	109	424	126		126	118	4	122	506	34	540
1957-58	380	134	514	196	4	200	209	6	215	340	28	368
1958-59	477	179	656	226	10	236	272	11	283	315	27	342
1959-60	625	239	864	219	17	236	322	10	332	280	24	304
1960-61	812	306	1118	195	20	215	348	11	359	401	30	431
1961-62	954	354	1308	175	20	195	288	10	298	365	33	398
1962-63	1118	385	1503	156	19	175	248	11	259	434	35	469
1963-64	1390	360	1750	159	16	175	216	14	230	386	43	429
1964-65	1576	531	2107	154	17	175	189	12	201	463	39	502
1965-66	1919	544	2563	156	19	171	184	12	196	454	32	486

TABLE 103

## Enrolment in Post Graduate Classes According to Faculties 1956-57 to 1965-66

Year	Enrolment according to faculties—General education																	
	Arts (M.A.)									Science (M.Sc.)								
	first year			Second year			Total			First year			Second year			Total		
1	2	3	4	5	6	7	8	9	10	11	12	13	14	15	16	17	18	19
1956-57	54	40	94	39	24	63	93	64	157	55	21	76	54	11	65	109	32	141
1957-58	103	52	155	35	34	69	138	86	224	69	15	84	46	17	63	115	32	147
1958-59	130	56	186	92	57	149	222	113	335	78	28	106	69	15	84	147	43	190
1959-60	189	109	298	129	52	181	318	161	479	134	51	185	98	41	139	232	92	324
1960-61	190	121	311	180	105	285	370	226	596	152	76	228	139	53	192	291	129	420
1961-62	216	123	339	172	110	282	388	233	621	204	87	291	143	73	216	347	160	507
1962-63	188	136	324	184	113	297	372	294	621	208	111	319	198	78	276	406	188	595
1963-64	245	173	418	195	129	324	440	302	742	253	146	399	199	106	305	452	252	704
1964-65	403	216	619	223	159	382	626	375	1001	323	224	547	241	157	398	564	381	945
1965-66	532	313	845	391	215	606	923	528	1451	388	294	682	303	209	512	691	503	1194

TABLE-104  
Enrolment in Post Graduate Classes according to faculties 1956-57 to 1965-1966

*Enrolment according to faculties—Professional and Special education*

Year	Commerce M. Com.			Education M. Ed.			Engineering & Technology M. Sc. Eng.			Medicine M. S./M. D. D. G. D.			Agriculture M.Sc. (Agri.)			Veterinary Science M. Sc. (Vet. Sc.)			Law M. L.		
	Boys	Girls	Total	Boys	Girls	Total	Boys	Girls	Total	Boys	Girls	Total	Boys	Girls	Total	Boys	Girls	Total	Boys	Girls	Total
	1	2	3	4	5	6	7	8	9	10	11	12	13	14	15	16	17	18	19	20	21
1956-67	..	..	..	..	..	..	..	..	..	..	..	..	..	..	..	..	..	..	..	..	..
1957-58	..	..	..	7	3	10	..	..	..	..	..	..	..	..	..	..	..	..	..	..	..
1958-59	..	..	..	7	3	10	22	..	22	..	..	..	..	..	..	..	..	..	..	..	..
1959-60	..	..	..	6	2	8	16	..	16	6	6	12	..	..	..	..	..	..	..	..	..
1960-61	..	..	..	14	6	20	24	..	24	8	7	15	..	..	..	..	..	..	..	5	1
1961-62	65	4	69	13	7	20	26	..	26	19	19	38	18	4	22	..	..	..	..	8	3
1962-63	124	7	131	14	6	20	24	2	26	20	21	41	36	8	44	..	..	..	..	12	5
1963-64	124	6	130	14	6	20	31	3	34	42	19	61	38	8	46	5	..	5	19	4	23
1964-65	130	5	135	19	11	30	61	3	64	55	8	63	43	10	53	15	..	15	26	3	29
1965-66	181	5	186	24	11	35	65	3	68	96	32	128	50	12	62	11	..	11	35	5	40

TABLE 105  
Enrolment in Research Classes according to faculties 1956-57 to 1965-66

Year	Arts			Science			Commerce			Education			Engineering & Technology			Medicine			Agriculture			Veterinary Science			Law		
	Boys	Girls	Total	Boys	Girls	Total	Boys	Girls	Total	Boys	Girls	Total	Boys	Girls	Total	Boys	Girls	Total	Boys	Girls	Total	Boys	Girls	Total	Boys	Girls	Total
	1	2	3	4	5	6	7	8	9	10	11	12	13	14	15	16	17	18	19	20	21	22	23	24	25	26	27
1956-57	4	1	5	32	7	39	..	..	..	..	..	..	..	..	..	..	..	..	..	..	..	..	..	..	..	..	
1957-58	2	4	6	29	8	37	..	..	..	..	..	..	..	..	..	..	..	..	..	..	..	..	..	..	..	..	
1958-59	8	7	15	24	8	32	..	..	..	..	..	..	..	..	..	..	..	..	..	..	..	..	..	..	..	..	
1959-60	5	5	10	21	7	28	..	..	..	3	1	4	..	..	..	..	..	..	..	..	..	..	..	..	..	..	
1960-61	2	3	5	11	3	14	..	..	..	5	1	6	..	..	..	..	..	..	..	..	..	..	..	..	..	..	
1961-62	7	5	12	7	4	11	..	..	..	5	1	6	..	..	..	..	..	..	..	..	..	..	..	..	..	..	
1962-63	14	4	18	11	5	16	..	..	..	6	1	7	..	..	..	..	..	..	..	..	..	..	..	..	..	..	
1963-64	24	8	32	26	15	41	..	..	..	6	2	8	..	..	..	..	..	..	..	..	..	..	..	..	3	3	
1964-65	29	16	45	35	17	52	..	..	..	4	2	6	..	..	..	..	..	..	..	..	..	..	..	..	4	4	
1965-66	30	14	44	36	13	49	..	..	..	5	3	8	..	..	..	..	..	..	..	..	..	..	..	..	4	4	

TABLE 106  
Enrolment of students in other branches of studies, 1956-57 to 1965-66

Year	B. A. M.			D. A. M.			Oriental studies			D. S. S.			Others			Total		
	Boys	Girls	Total	Boys	Girls	Total	Boys	Girls	Total	Boys	Girls	Total	Boys	Girls	Total	Boys	Girls	Total
	1	2	3	4	5	6	7	8	9	10	11	12	13	14	15	16	17	18
1956-57	80	17	97	115	19	134	105	21	126	..	..	..	687	24	711	987	81	1068
1957-58	83	19	102	123	23	146	318	151	469	..	30	30	821	21	842	1345	244	1589
1958-59	79	20	99	122	26	148	450	198	648	35	24	59	164	17	181	850	285	1135
1959-60	78	17	95	109	22	131	301	104	405	61	63	124	97	10	107	646	216	862
1960-61	64	12	76	75	15	90	301	95	396	53	39	92	175	222	397	668	383	1051
1961-62	55	12	67	32	8	40	358	165	523	32	17	49	242	57	299	719	259	978
1962-63	69	12	81	162	51	213	358	179	537	44	7	51	877	242	1119	1510	491	2001
1963-64	66	18	84	144	71	215	267	201	468	30	9	39	810	215	1025	1317	514	1831
1964-65	77	15	92	153	66	219	263	164	427	43	24	67	863	182	1045	1399	451	1850
1965-66	88	21	109	148	67	215	268	115	383	37	29	66	768	149	917	1309	381	1690

TABLE 107

Enrolment of women students in colleges  
1956-57 to 1965-66

Year	Enrolment		Percentage enrolment of women students
	Total	Women	
1	2	3	4
1956-57	28772	7428	25.8
1957-58	32167	8775	27.2
1958-59	38483	10691	27.8
1959-60	38132	10614	27.8
1960-61	44363	13160	29.7
1961-62	49953	15063	30.2
1962-63	45546	17555	38.5
1963-64	67116	22196	33.1
1964-65	120383	29518	24.5
1965-66	179295	41662	23.2

TABLE 108

Teacher - pupil - ratio in colleges for general  
education 1956-57 to 1965-66

Year	Teacher	Pupil	Ratio
1	2	3	4
1956-57	1679	28772	1: 17.2
1957-58	2052	32167	1: 15.7
1958-59	2275	38483	1: 16.9
1959-60	2563	38132	1: 14.9
1960-61	2819	44363	1: 15.7
1961-62	3123	49953	1: 16.0
1962-63	3334	45546	1: 13.7
1963-64	3675	67116	1: 18.3
1964-65	4451	120383	1: 27.0
1965-66	..	179295	..

TABLE 109

Strength of students in different categories of colleges under the Kerala University from 1969-70 to 1971-72  
GOVERNMENT COLLEGES

Sl. No.	Type of Colleges	Strength of students								
		1969-70			1970-71			1971-72		
		Men	Women	Total	Men	Women	Total	Men	Women	Total
1	2	3	4	5	6	7	8	9	10	11
1	Arts and Science colleges	4536	4371	8907	4867	4594	9461	6272	4583	10855
2	Law colleges	618	60	678	814	89	903	786	104	890
3	Training colleges	88	111	199	76	107	183	79	118	197
4	Engineering colleges	1208	92	1300	908	112	1020	728	52	780
5	Medical Colleges	1281	464	1745	1235	534	1769	1240	546	1786
6	Ayurveda Colleges	143	44	187	219	62	281	215	68	283
7	Agricultural Colleges	212	32	244	175	25	200	*	*	*
8	Veterinary Colleges	..	..	..	..	..	..	..	..	..
9	Junior Colleges	1298	..	1298	1330	..	1330	..	..	..
10	University training department	717	290	1007	723	355	1078	465	291	756
	Total	10101	5464	15565	10347	5878	16225	9785	5762	15347

TABLE 110

Strength of students in different categories of colleges under the Kerala University from 1969-70 to 1971-72  
PRIVATE COLLEGES

Sl. No.	Type of Colleges/Department	Strength of students								
		1969-70			1970-71			1971-72		
		Men	Women	Total	Men	Women	Total	Men	Women	Total
1	2	3	4	5	6	7	8	9	10	11
1	Arts and science colleges	44667	34873	79540	48020	38741	86761	48373	40339	88712
2	Law colleges	176	4	180	405	17	422	508	44	552
3	Training colleges	620	1064	1684	545	1044	1589	439	1150	1589
4	Engineering colleges	1292	41	1333	840	17	857	683	10	693
5	Medical colleges	374	71	445	474	104	578	425	90	515
6	Ayurveda colleges	..	..	..	..	..	..	..	..	..
7	Agricultural colleges	..	..	..	..	..	..	..	..	..
8	Veterinary colleges	..	..	..	..	..	..	..	..	..
9	Junior colleges	10151	5395	15546	9942	6047	15989	9983	6915	16898
10	University teaching Department	..	..	..	..	..	..	..	..	..
	Total	57280	41448	98728	60226	45970	106196	60411	48348	108959

\* Under the Agricultural University, Trichur

TABLE 111

Faculty wise distribution of students in colleges under the University of Kerala during 1971-72

Sl. No.	Name of faculty	Name of students		
		Men	Women	Total
1	2	3	4	5
1	Faculty of Arts	11819	10970	22789
2	Faculty of oriental studies	2176	2180	4356
3	Faculty of Fine Arts	..	46	46
4	Faculty of science	13353	10722	24075
5	Faculty of commerce	3403	327	3730
6	Faculty of Education	536	1277	1813
7	Faculty of Law	1294	148	1442
8	Faculty of Engineering	1410	63	1473
9	Faculty of Medicine	1665	636	2301
10	Faculty of Ayurveda	213	68	281

TABLE 112

Total number of students passed in intermediate, Pre-university and Pre-professional courses 1957 to 1966

Year	Intermediate			Pre-university			Pre-professional											
	No. of boys	No. of girls	Total	No. of boys	No. of girls	Total	No. of boys	No. of girls	Total									
	appear- ed	passed	appear- ed	passed	appear- ed	passed	appear- ed	passed	appear- ed									
1	2	3	4	5	6	7	8	9	10	11	12	13	14	15	16	17	18	19
1957	15606	4271	4902	1487	20508	5758	7610	1869	3006	715	10616	2584	..	..	..	..	..	..
1958	5666	1285	1646	432	7312	1717	11568	4890	4360	1872	15928	6762	..	..	..	..	..	..
1959	2269	512	536	150	2805	662	14996	7227	6226	3072	21222	10299	932	623	81	61	1013	684
1960	984	379	131	63	1115	433	14530	5738	5673	2473	20203	8211	975	637	83	71	1059	708
1961	..	..	..	..	-	..	17052	7080	7114	3072	24166	10152	1274	860	117	82	1391	942
1962	..	-	..	..	-	..	21108	9394	9810	4105	30918	13499	472	343	80	52	552	395
1963	..	-	..	..	-	..	23414	10493	12126	5274	35540	15767	486	342	85	80	571	422
1964	..	-	..	..	-	..	27875	13207	15995	7361	43870	20568	505	317	100	78	605	395
1965	..	-	..	..	-	..	11294	6042	5741	3344	17035	9386	470	304	106	72	576	376
1966	(Pre-degree) 23735	9394	14666	7546	38401	16870	2511	1144	907	513	3418	1657	232	143	55	43	287	186

TABLE 113

Total number of students passed in Intermediate, Pre-university and Pre-professional Course-1957- to 1966 (Separately for March and September examination)

Year and Month	Intermediate				Pre-university				Pre-professional			
	No. of boys		No. of girls		No. of boys		No. of girls		No. of boys		No. of girls	
	appeared	passed	appeared	passed	appeared	passed	appeared	passed	appeared	passed	appeared	passed
	2	3	4	5	6	7	8	9	10	11	12	13
1957 March	9851	2927	3115	1016	5136	1075	2078	432	..	..	..	..
" September	5755	1344	1787	471	2474	794	928	283	..	..	..	..
1958 March	3633	769	1052	273	8162	3886	3072	1465	547	377	73	66
" September	2033	516	594	159	3404	1004	1233	407	..	..	..	..
1959 March	1531	397	384	111	10900	5643	4467	2324	744	501	63	50
" September	738	115	152	39	4096	1579	1759	743	133	122	13	11
1960 March	984	370	131	63	9970	4513	3857	1970	761	438	74	64
" September	..	..	..	..	4560	1225	1816	603	215	149	9	7
1961 March	..	..	..	..	11793	5632	5097	2410	1010	703	97	71
" September	..	..	..	..	5259	1448	2017	662	264	157	20	11
1962 March	..	..	..	..	14660	6914	6542	2892	388	278	73	48
" September	..	..	..	..	6448	2480	3268	1213	84	65	7	4
1963 March	..	..	..	..	16059	7830	8159	3817	387	269	80	75
" September	..	..	..	..	7355	2663	3967	1457	99	73	5	5
1964 March	..	..	..	..	18853	9551	10612	4929	372	243	86	72
" September	..	..	..	..	9022	3656	5383	2432	133	74	14	6
1965 March	..	..	..	..	8361	4901	4408	2777	363	230	83	56
" September	..	..	..	..	2933	1141	1333	567	107	74	23	16
1966 March	15204	6132	9534	5517	1739	946	701	462	172	101	49	39
" September	8531	3192	5132	2029	772	198	206	51	60	42	6	4

TABLE 114

Out-turn of B.A., B.Sc. and B.Com. Degree holders 1957 to 1966

Year	B.A.						B.Sc.						B.Com.					
	Boys		Girls		Total		Boys		Girls		Total		Boys		Girls		Total	
	No. appeared	No. passed	No. appeared	No. passed	No. appeared	No. passed	No. appeared	No. passed	No. appeared	No. passed	No. appeared	No. passed	No. appeared	No. passed	No. appeared	No. passed	No. appeared	No. passed
1	2	3	4	5	6	7	8	9	10	11	12	13	14	15	16	17	18	19
1957	3317	1061	973	340	4290	1401	3501	1108	1162	396	4663	1504	648	296	8	4	656	300
1958	3634	1207	1306	480	4940	1687	3681	1218	1460	501	5141	1719	1063	304	26	4	1089	308
1959	4178	1461	2129	699	6307	2160	4342	1552	1671	790	6013	2342	1041	561	37	21	1078	532
1960	3760	1208	1772	574	5532	1782	5647	1962	2173	927	7820	2889	795	377	15	6	810	383
1961	4126	1268	1638	512	5764	1780	6245	2126	2308	1004	8587	2937	808	472	16	11	824	483
1962	2540	751	1232	437	3772	1188	6678	2038	3124	1176	9802	3214	961	505	29	17	990	522
1963	1854	652	888	346	2742	998	5392	1618	2581	1003	7973	2621	479	284	133	121	630	405
1964	1375	662	763	448	2138	1110	5014	2135	2284	1348	7298	3483	836	454	13	6	849	460
1965	1741	854	1054	558	2795	1412	5136	1998	2704	1381	7840	3379	1067	569	36	14	1103	583
1966	2381	1409	1546	839	3927	2248	6679	3102	3531	1992	10210	5094	1341	876	52	26	1393	902

TABLE 115

Out-turn of B.A., B.Sc. and B.Com. Degree holders 1957 to 1966  
(Separately for March and September Examinations)

Year/ Month	B.A.				B.Sc.				B.Com.			
	Boys		Girls		Boys		Girls		Boys		Girls	
	Number appeared	Number passed	Number appeared	Number passed	Number appeared	Number passed	Number appeared	Number passed	Number appeared	Number passed	Number appeared	Number passed
1	2	3	4	5	6	7	8	9	10	11	12	13
1957 March	1923	602	680	193	1974	692	704	269	453	204	6	3
1957 September	1394	459	293	147	1527	416	458	127	190	92	2	1
1958 March	2032	870	825	321	2232	835	895	338	531	209	12	2
1958 September	1602	397	481	159	1449	323	565	163	332	95	14	2
1959 March	2694	986	1412	570	2935	1149	1187	571	716	408	26	13
1959 September	1484	475	717	129	1367	403	484	219	323	153	11	5
1960 March	2282	849	1083	408	3465	1319	1456	697	570	308	10	5
1960 September	1478	359	689	171	2182	643	717	230	225	69	5	1
1961 March	2434	803	987	309	3717	1328	1558	754	590	347	14	9
1961 September	1692	465	651	203	2528	798	750	250	218	125	2	2
1962 March	1624	546	822	317	4282	1476	2164	902	742	425	25	17
1962 September	916	205	410	120	2396	562	960	274	219	80	4	1
1963 March	1575	504	755	273	4315	1440	2227	929	263	217	130	120
1963 September	279	148	133	73	1077	178	354	74	234	67	3	1
1964 March	1083	576	672	422	3902	1912	1998	1290	642	366	11	5
1964 September	292	86	91	26	1032	223	286	58	194	88	2	1
1965 March	1400	725	914	515	4033	1783	2332	1271	813	484	26	12
1965 September	341	129	140	43	1103	210	372	110	254	85	10	2
1966 March	2039	1204	1347	790	5032	2612	2939	1792	1053	689	34	16
1966 September	342	205	199	49	1647	490	592	200	288	187	18	10

TABLE 116

Out-turn of M.A., M.Sc. and M.Com. Degree holders 1957 to 1966

Year	M.A.						M.Sc.						M.Com.					
	Boys		Girls		Total		Boys		Girls		Total		Boys		Girls		Total	
	No. appe- ared	No. pa- ssed	No. appe- ared	No. pa- ssed	No. appe- ared	No. pa- ssed	No. appe- ared	No. pa- ssed	No. appe- ared	No. pa- ssed	No. appe- ared	No. pa- ssed	No. appe- ared	No. pa- ssed	No. appe- ared	No. pa- ssed	No. appe- ared	No. pa- ssed
1	2	3	4	5	6	7	8	9	10	11	12	13	14	15	16	17	18	19
1957	71	56	24	23	95	79	80	79	24	22	104	101	..	..	..	..	..	..
1958	102	93	72	67	174	160	86	75	26	26	112	101	..	..	..	..	..	..
1959	212	165	83	66	295	237	98	85	24	24	122	109	..	..	..	..	..	..
1960	206	166	88	79	294	245	95	85	31	31	126	116	..	..	..	..	..	..
1961	250	207	114	108	364	315	114	122	49	44	193	166	..	..	..	..	..	..
1962	183	170	104	97	287	267	138	133	75	68	213	201	..	..	..	..	..	..
1963	263	217	130	120	393	337	196	183	80	75	276	258	52	47	3	1	55	48
1964	250	210	140	124	390	334	210	173	102	94	312	267	67	59	4	4	71	63
1965	295	247	174	145	466	392	257	215	167	143	424	358	54	50	4	3	58	53
1966	436	385	205	187	644	572	324	255	214	181	538	436	79	73	2	1	84	74

TABLE 117

**Out-turn of Graduates -Professional 1957 to 1966**  
(Separately for March and September Examinations)

Year/ Month	B.Sc. (Engg.)				M.Sc. (Engg.)				M.B.B.S.			
	Boys		Girls		Boys		Girls		Boys		Girls	
	Number appeared	Number passed	Number appeared	Number passed	Number appeared	Number passed	Number appeared	Number passed	Number appeared	Number passed	Number appeared	Number passed
(1)	(2)	(3)	(4)	(5)	(6)	(7)	(8)	(9)	(10)	(11)	(12)	(13)
1957 March	90	78	..	..	..	..	..	..	40	23	20	11
1957 September	12	6	..	..	..	..	..	..	60	42	27	24
1958 March	91	58	1	..	..	..	..	..	33	23	10	7
1958 September	4	3	..	..	..	..	..	..	52	35	18	14
1959 March	109	105	..	..	..	..	..	..	41	25	10	8
1959 September	4	4	..	..	..	..	..	..	54	47	16	12
1960 March	106	97	..	..	..	..	..	..	28	22	7	6
1960 September	10	9	..	..	..	..	..	..	63	46	17	13
1961 March	167	161	..	..	12	11	..	..	54	42	9	7
1961 September	6	5	..	..	4	4	..	..	70	53	32	30
1962 March	364	323	13	8	22	20	..	..	61	38	29	14
1962 September	40	16	2	2	6	6	..	..	82	65	46	30
1963 March	519	455	10	8	25	25	1	1	71	43	30	24
1963 September	79	60	1	1	..	..	..	..	28	23	6	4
1964 March	531	455	10	8	1	..	1	1	117	82	20	16
1964 September	90	85	3	3	..	..	..	..	124	55	23	16
1965 March	519	455	11	6	30	21	1	1	202	131	72	55
1965 September	132	109	3	3	..	..	..	..	178	106	64	49
1966 March	397	477	35	27	34	28	1	1	305	170	73	45
1966 September	114	105	8	8	..	..	..	..	184	105	30	21

Year/ Month	M.S./M.D./D.G.O./D.P.H./D.C.P.				B.Ed.				M.Ed.			
	Boys		Girls		Boys		Girls		Boys		Girls	
	No. appeared	No. passed	No. appeared	No. passed	No. appeared	No. passed	No. appeared	No. passed	No. appeared	No. passed	No. appeared	No. passed
(14)	(15)	(16)	(17)	(18)	(19)	(20)	(21)	(22)	(23)	(24)	(25)	
1957 March	..	..	..	..	454	408	302	268	..	..	..	..
1957 September	..	..	..	..	28	15	26	16	..	..	..	..
1958 March	..	..	..	..	888	729	496	418	..	..	..	..
1958 September	..	..	..	..	124	80	59	44	..	..	..	..
1959 March	..	..	..	..	1052	920	464	415	..	..	..	..
1959 September	..	..	..	..	107	98	47	43	..	..	..	..
1960 March	..	..	..	..	1121	973	450	399	8	..	2	..
1960 September	..	..	..	..	148	105	40	32	..	..	..	..
1961 March	..	..	..	..	1327	1199	782	675	14	11	6	6
1961 September	..	..	..	..	125	85	51	43	..	..	..	..
1962 March	..	..	..	..	1370	1223	798	735	NA	NA	NA	NA
1962 September	..	..	..	..	126	93	55	44	..	..	..	..
1963 March	7	3	6	4	1309	1186	849	792	17	15	4	4
1963 September	3	1	3	1	126	98	47	42	..	..	..	..
1964 March	22	11	24	7	1285	1161	1152	1075	15	12	8	8
1964 September	10	5	8	5	93	65	51	42	..	..	..	..
1965 March	35	20	18	9	1166	996	4275	1048	19	18	11	11
1965 September	16	8	14	7	158	130	107	92	..	..	..	..
1966 March	32	20	19	6	1157	974	1241	1070	21	21	8	8
1966 September	8	5	15	8	168	110	149	86	..	..	..	..

TABLE 117 (Contd.)

Out-turn of graduates-professional 1957 to 1966

Year/ Month	B.Sc. (Agri.)				M.Sc. (Agri.)				B.T.Sc.			
	Boys		Girls		Boys		Girls		Boys		Girls	
	No. appeared	No. passed	No. appeared	No. passed	No. appeared	No. passed	No. appeared	No. passed	No. appeared	No. passed	No. appeared	No. passed
	(26)	(27)	(28)	(29)	(30)	(31)	(32)	(33)	(34)	(35)	(36)	(37)
1957 March	..	..	..	..	..	..	..	..	..	..	..	..
1957 September	..	..	..	..	..	..	..	..	..	..	..	..
1958 March	48	39	..	..	..	..	..	..	..	..	..	..
1958 September	9	9	..	..	..	..	..	..	..	..	..	..
1959 March	74	52	..	..	..	..	..	..	37	26	2	2
1959 September	22	21	..	..	..	..	..	..	11	11	..	..
1960 March	78	60	4	4	..	..	..	..	73	47	2	..
1960 September	18	18	..	..	..	..	..	..	31	27	2	2
1961 March	65	50	6	5	..	..	..	..	57	35	1	1
1961 September	15	13	1	1	..	..	..	..	33	24	..	..
1962 March	74	65	6	6	..	..	..	..	53	40	3	3
1962 September	9	9	..	..	..	..	..	..	37	26	1	1
1963 March	51	46	8	8	19	18	4	4	57	34	1	1
1963 September	4	4	..	..	..	..	..	..	52	37	..	..
1964 March	54	47	6	3	19	17	4	4	56	29	3	2
1964 September	7	7	3	3	..	..	..	..	44	30	1	1
1965 March	50	43	4	4	21	21	2	2	45	39	3	3
1965 September	7	7	..	..	..	..	..	..	18	15	..	..
1966 March	40	27	6	4	27	27	3	3	24	11	1	..
1966 September	14	14	1	1	..	..	..	..	2	2	2	2

Year/ Month	B.L.				M.L.			
	Boys		Girls		Boys		Girls	
	No. appeared	No. passed	No. appeared	No. passed	No. appeared	No. passed	No. appeared	No. passed
	(38)	(39)	(40)	(41)	(42)	(43)	(44)	(45)
1957 March	230	73	19	4	5	1	..	..
1957 September	122	76	12	8	..	..	..	..
1958 March	191	119	11	5	5	1	..	..
1958 September	57	33	7	4	3	..	..	..
1959 March	138	96	13	10	3	1	..	..
1959 September	..	..	..	..	..	..	..	..
1960 March	121	60	9	5	5	1	..	..
1960 September	50	12	4	1	..	..	..	..
1961 March	208	60	18	6	6	1	..	..
1961 September	131	46	9	4	..	..	..	..
1962 March	211	100	14	7	7	3	1	..
1962 September	97	42	6	2	..	..	..	..
1963 March	202	107	11	4	8	3	..	..
1963 September	80	53	3	2	..	..	2	..
1964 March	213	118	21	13	8	2	3	..
1964 September	79	27	7	5	..	..	..	..
1965 March	188	77	12	7	20	5	5	1
1965 September	99	54	2	1	..	..	..	..
1966 March	193	118	15	13	15	5	2	..
1966 September	59	34	9	5	..	..	..	..



TABLE 118

## Pass percentage in Intermediate, Pre-University &amp; Pre-Professional Examinations in 1957 to 1966

Year	Intermediate			Pre-University			Pre-Professional		
	Boys	Girls	Total	Boys	Girls	Total	Boys	Girls	Total
1	2	3	4	5	6	7	8	9	10
1957	27.4	30.3	28.1	24.6	23.8	24.3	..	..	..
1958	22.7	26.2	23.5	42.3	42.9	42.5	..	..	..
1959	22.6	28.0	23.6	48.2	49.3	48.5	66.8	75.3	67.5
1960	37.6	48.1	38.8	39.5	43.6	40.6	65.3	85.5	66.9
1961	..	..	..	41.5	43.2	42.0	67.5	70.1	67.7
1962	..	..	..	44.5	41.8	43.7	72.7	65.0	71.6
1963	..	..	..	44.8	43.5	44.4	70.4	94.1	73.9
1964	..	..	..	47.4	46.0	46.9	62.8	78.0	65.3
1965	..	..	..	53.5	58.2	55.1	64.7	67.9	65.3
PRE-DEGREE									
1966	39.3	51.5	43.9	45.6	56.6	48.5	61.6	78.2	64.8

TABLE 119

Pass Percentage in Intermediate, Pre-University & Pre-Professional Examinations in 1957 to 1966  
(Separately for March and September examinations)

Year Month	Intermediate			Pre-University			Pre-Professional		
	Boys	Girls	Total	Boys	Girls	Total	Boys	Girls	Total
1	2	3	4	5	6	7	8	9	10
1957 March	29.7	32.6	30.4	20.9	20.8	20.9	..	..	..
1957 September	23.4	26.4	24.1	32.1	30.5	31.7	..	..	..
1958 March	21.2	26.0	22.2	47.6	47.7	47.6	68.9	90.4	71.5
1958 September	25.4	26.8	25.7	29.5	31.6	30.1	..	..	..
1959 March	25.9	28.9	26.5	51.8	52.0	51.9	67.3	73.5	67.9
1959 September	15.6	25.7	17.3	38.5	42.5	39.7	64.9	84.6	66.2
1960 March	37.6	48.1	38.8	45.3	48.5	46.2	64.1	86.5	66.1
1960 September	..	..	..	26.9	33.2	28.7	69.3	77.8	69.6
1961 March	..	..	..	47.8	47.3	47.6	69.6	73.2	69.9
1961 September	..	..	..	27.5	32.8	29.0	59.5	55.0	59.2
1962 March	..	..	..	47.2	44.2	46.3	71.6	65.8	70.7
1962 September	..	..	..	38.5	37.1	38.0	77.4	57.1	75.8
1963 March	..	..	..	48.8	46.8	48.1	69.5	93.8	73.7
1963 September	..	..	..	36.2	36.7	36.4	73.7	100.0	75.0
1964 March	..	..	..	50.7	46.4	49.1	65.3	83.7	68.8
1964 September	..	..	..	40.5	45.2	42.3	55.6	43.9	54.4
1965 March	..	..	..	58.6	63.0	60.1	63.4	67.5	64.1
1965 September	..	..	..	38.9	42.5	40.0	69.2	69.6	69.2
1966 March	40.3	57.9	47.1	54.4	65.9	57.7	58.7	79.6	63.3
1966 September	37.4	39.5	38.2	38.0	24.8	25.5	70.0	66.7	69.7

TABLE 120

## Pass Percentage in Degree Examinations in 1957 to 1966

Year	B.A.			B.Sc.			B.Com.		
	Boys	Girls	Total	Boys	Girls	Total	Boys	Girls	Total
1	2	3	4	5	6	7	8	9	10
1957	32.0	34.9	32.7	31.6	34.1	32.3	45.7	50.0	45.7
1958	33.2	36.8	34.1	33.1	34.3	33.4	28.6	15.4	28.3
1959	35.0	32.8	34.2	35.7	47.3	38.9	53.9	56.3	54.0
1960	32.1	32.4	32.2	34.7	42.7	36.9	47.4	40.0	47.3
1961	30.7	31.3	30.9	32.7	38.3	34.2	58.4	68.8	58.6
1962	29.6	35.5	31.5	30.5	37.6	32.8	52.5	58.6	52.7
1963	35.2	39.0	36.4	30.0	38.9	32.9	57.1	91.0	64.3
1964	48.1	58.7	51.9	42.6	59.0	47.7	54.3	46.2	54.2
1965	49.1	52.9	50.5	38.9	51.1	43.1	53.3	38.9	52.9
1966	59.2	54.3	57.3	46.4	56.4	49.9	65.3	50.0	64.8

TABLE 121  
**Pass Percentage in Degree Examinations in 1957 to 1966**  
 (Separately for March and September examinations)

Year /Month	B.A.			B.Sc.			B.Com.		
	Boys	Girls	Total	Boys	Girls	Total	Boys	Girls	Total
	2	3	4	5	6	7	8	9	10
1957 March	31.3	28.4	30.5	35.1	38.2	35.9	44.5	50.0	44.6
September	32.9	50.1	35.9	27.2	27.7	27.4	48.4	50.0	48.4
1958 March	42.8	38.9	41.7	37.4	37.8	37.5	39.4	16.7	38.9
September	21.0	33.1	23.8	26.4	28.8	27.1	17.9	14.3	17.8
1959 March	36.6	40.4	37.9	38.9	48.1	41.5	56.8	50.0	56.6
September	32.0	18.0	27.4	29.1	45.2	33.2	47.4	72.7	48.2
1960 March	37.2	37.2	37.2	38.1	47.9	41.0	54.0	50.0	54.0
September	24.3	24.8	24.5	29.5	32.1	30.1	30.7	20.1	30.4
1961 March	33.0	31.3	32.5	35.7	48.4	39.4	58.8	64.3	58.9
September	27.5	31.2	28.5	31.6	33.3	32.0	57.3	100.0	57.7
1962 March	33.6	38.6	35.3	34.5	41.7	36.9	57.3	68.0	57.6
September	22.4	29.3	24.5	23.5	28.5	24.9	36.5	...	35.9
1963 March	32.0	36.2	33.3	33.4	41.7	36.2	82.5	92.0	85.8
September	53.0	54.9	53.6	16.5	20.9	17.6	28.6	33.3	28.7
1964 March	53.2	62.8	56.9	48.0	64.6	53.5	57.0	45.5	56.8
September	29.5	28.6	29.2	21.6	20.3	21.3	45.4	50.0	45.4
1965 March	51.8	56.3	53.6	44.3	54.5	48.1	59.5	46.2	59.1
September	37.8	30.7	35.8	19.0	29.6	21.7	33.5	20.0	33.0
1966 March	59.0	53.6	47.0	51.9	61.0	55.3	65.4	47.1	64.9
September	59.9	24.6	58.9	29.8	33.8	30.8	64.9	55.6	64.4

TABLE 122  
**Pass Percentage in Degree Examinations-Professional 1957 to 1966**

Year	B.Sc. Engineering			M.Sc. (Engineering)			M.B.B.S.			M.D./MIS etc.		
	Boys	Girls	Total	Boys	Girls	Total	Boys	Girls	Total	Boys	Girls	Total
	2	3	4	5	6	7	8	9	10	11	12	13
1957	82.4	..	82.4	..	..	..	65.0	74.5	68.0	..	..	..
1958	64.2	..	63.5	..	..	..	68.2	75.0	69.9	..	..	..
1959	97.3	..	97.3	..	..	..	75.8	76.9	76.0	..	..	..
1960	90.5	..	90.5	..	..	..	74.7	83.3	76.5	..	..	..
1961	96.0	..	96.0	93.8	..	93.8	76.6	90.2	80.0	..	..	..
1962	83.9	100.0	84.7	92.9	..	92.9	72.0	58.7	67.4	..	..	..
1963	86.1	81.8	86.0	100.0	100.0	100.0	66.7	77.8	69.6	40.0	55.6	47.4
1964	87.0	84.6	86.9	Nil	100.0	50.0	56.8	74.4	59.5	50.0	57.5	43.7
1965	86.6	64.3	86.2	70.0	100.0	71.0	62.4	76.5	66.1	54.9	50.0	53.0
1966	81.9	81.4	81.8	82.4	100.0	82.9	56.2	64.1	57.6	62.5	41.2	52.7

TABLE 122 (Contd.)  
**Pass percentage in Degree Examinations-Professional 1957 to 1966**

Year	B.Ed.			M.Ed.			B.Sc.(Agri.)			M.Sc.(Agri.)		
	Boys	Girls	Total	Boys	Girls	Total	Boys	Girls	Total	Boys	Girls	Total
	14	15	16	17	18	19	20	21	22	23	24	25
1957	87.7	86.5	87.2	..	..	..	..	..	..	..	..	..
1958	79.9	83.2	81.1	..	..	..	84.2	..	84.2	..	..	..
1959	87.8	89.6	88.4	..	..	..	76.0	..	76.0	..	..	..
1960	84.9	88.0	85.8	..	..	..	81.3	100.0	82.0	..	..	..
1961	88.4	91.7	89.6	78.6	100.0	85.0	78.8	85.7	79.3	..	..	..
1962	88.0	91.3	89.2	N.A.	N.A.	N.A.	89.2	100.0	89.9	..	..	..
1963	89.5	93.1	91.0	88.2	100.0	90.5	90.9	100.0	92.1	94.7	100.0	95.7
1964	89.0	92.9	90.8	82.0	100.0	87.0	88.5	66.7	87.7	89.5	100.0	91.3
1965	85.0	82.5	83.8	94.7	100.0	96.7	87.7	100.0	88.5	100.0	100.0	100.0
1966	81.8	83.2	82.5	100.0	100.0	100.0	75.9	71.4	75.4	100.0	100.0	100.0

TABLE 122 (Contd.)

Year	B.L.			M.L.			B.V.Sc.			M.S.W.			D.S.S.		
	Boys	Girls	Total	Boys	Girls	Total	Boys	Girls	Total	Boys	Girls	Total	Boys	Girls	Total
	26	27	28	29	30	31	32	33	34	35	36	37	38	39	40
1957	..	..	..	20.0	..	20.0	..	..	..	..	..	..	..	..	..
1958	61.3	50.0	60.5	20.0	..	20.0	..	..	..	..	..	..	..	..	..
1959	..	..	..	33.3	..	33.3	77.1	100.0	78.0	..	..	..	..	..	..
1960	42.1	46.2	42.4	20.0	..	20.0	71.2	50.0	70.4	..	..	..	..	..	..
1961	31.3	37.0	31.7	16.7	..	16.7	65.6	100.0	65.5	..	..	..	..	..	..
1962	46.1	45.0	46.0	42.9	..	37.5	73.3	100.0	74.5	86.7	..	86.7	..	..	..
1963	56.7	42.9	56.1	37.5	..	30.0	65.1	100.0	65.5	100.0	..	100.0	71.0	57.1	68.4
1964	49.7	64.3	50.9	25.0	..	18.2	59.0	75.0	59.6	100.0	..	100.0	64.3	100.0	71.4
1965	45.6	57.1	46.2	25.0	20.0	24.0	85.7	100.0	86.4	91.7	..	91.7	82.6	100.0	86.2
1966	60.3	75.0	61.6	33.3	..	29.4	50.0	66.7	51.7	92.0	..	92.0	81.6	..	84.6

TABLE 123

**Pass Percentage in Degree Examinations - Professional 1957-1966**  
(Separately for March and September Examinations)

Year Month	B.Sc.(Engineering)			M.Sc.(Engineering)			M.B.B.S.			MS/MD etc.			
	Boys	Girls	Total	Boys	Girls	Total	Boys	Girls	Total	Boys	Girls	Total	
	1	2	3	4	5	6	7	8	9	10	11	12	13
1957	March	86.7	..	86.7	..	..	..	57.5	55.0	56.7	..	..	..
	September	50.0	..	50.0	..	..	..	70.0	88.9	75.9	..	..	..
1958	March	63.7	..	63.7	..	..	..	69.7	70.0	69.8	..	..	..
	September	75.0	..	75.0	..	..	..	67.3	77.8	70.0	..	..	..
1959	March	97.2	..	97.2	..	..	..	61.0	80.0	64.7	..	..	..
	September	100.0	..	100.0	..	..	..	87.0	75.0	84.3	..	..	..
1960	March	90.0	..	90.6	..	..	..	78.6	85.7	80.0	..	..	..
	September	90.0	..	90.0	..	..	..	73.0	82.4	75.0	..	..	..
1961	March	96.4	..	96.4	91.7	..	91.7	77.8	77.8	77.8	..	..	..
	September	83.3	..	83.3	100.0	..	100.0	75.7	93.8	81.4	..	..	..
1962	March	88.7	100.0	89.3	90.9	..	90.9	62.3	48.3	57.8	..	..	..
	September	40.0	100.0	42.9	100.0	..	100.0	79.3	65.2	74.2	..	..	..
1963	March	87.7	80.0	80.3	100.0	100.0	100.0	60.6	80.0	66.3	42.9	66.7	53.8
	September	75.9	100.0	76.5	..	..	..	82.1	66.7	79.4	33.3	33.3	33.3
1964	March	85.7	80.0	85.6	Nil	100.0	50.0	70.1	80.0	74.5	50.0	29.2	73.9
	September	94.4	100.0	94.6	..	..	..	44.4	69.6	48.3	50.0	62.5	55.6
1965	March	87.7	54.5	87.0	70.0	100.0	71.0	64.9	76.4	67.9	57.1	50.0	54.7
	September	82.6	100.0	83.0	..	..	..	59.6	76.6	64.0	50.0	50.0	50.0
1966	March	79.9	77.1	79.7	82.4	100.0	82.9	55.7	61.6	56.9	62.5	31.6	51.0
	September	92.1	100.0	92.6	..	..	..	57.1	70.0	58.9	62.5	53.3	56.5

Year Month	B.Ed.			M.Ed.			Bsc. (Agri.)			Msc. (Agri.)			
	Boys	Girls	Total	Boys	Girls	Total	Boys	Girls	Total	Boys	Girls	Total	
	14	15	16	17	18	19	20	21	22	23	24	25	
1957	March	89.9	88.7	89.4	..	..	..	..	..	..	..	..	..
	September	53.5	61.5	57.4	..	..	..	..	..	..	..	..	..
1958	March	82.1	84.3	82.9	..	..	..	81.3	..	81.3	..	..	..
	September	64.5	74.6	67.8	..	..	..	100.0	..	100.0	..	..	..
1959	March	87.5	89.4	88.1	..	..	..	70.3	..	70.3	..	..	..
	September	91.6	91.5	91.6	..	..	..	95.5	..	95.5	..	..	..
1960	March	86.8	88.7	87.3	..	..	..	76.9	100.0	78.0	..	..	..
	September	70.9	80.0	72.9	..	..	..	100.0	..	100.0	..	..	..
1961	March	90.4	92.2	91.0	78.6	100.0	85.0	76.9	83.3	77.5	..	..	..
	September	68.0	84.3	72.7	..	..	..	86.7	100.0	87.5	..	..	..
1962	March	89.3	92.1	90.3	N.A.	N.A.	N.A.	87.8	100.0	88.8	..	..	..
	September	73.8	80.0	62.6	..	..	..	100.0	..	100.0	..	..	..
1963	March	90.6	93.3	91.6	88.2	100.0	90.5	90.2	100.0	91.5	94.7	100.0	95.7
	September	77.8	89.4	80.9	..	..	..	100.0	..	100.0	..	..	..
1964	March	90.4	93.3	91.8	80.0	100.0	87.0	87.0	50.0	83.3	89.5	100.0	91.3
	September	69.9	82.4	74.3	..	..	..	100.0	100.0	100.0	..	..	..
1965	March	85.4	82.2	83.7	94.7	100.0	96.7	86.0	100.0	87.0	100.0	100.0	100.0
	September	82.3	86.0	83.8	..	..	..	100.0	..	100.0	..	..	..
1966	March	84.2	86.2	85.2	100.0	100.0	100.0	67.5	66.7	67.4	100.0	100.0	100.0
	September	65.5	57.7	61.8	..	..	..	100.0	100.0	100.0	..	..	..

TABLE 123 (Contd.)

Year/Month	B.L.			M.L.			B.Vsc.			M.S.W.			D.S.S.		
	Boys	Girls	Total	Boys	Girls	Total	Boys	girls	Total	Boys	Girls	Total	Boys	Girls	Total
	26	27	28	29	30	31	32	33	34	35	36	37	38	39	40
1957 March	31.7	21.1	30.9	20.0	..	20.0	..	..	..	..	..	..	..	..	..
September	..	..	..	..	..	..	..	..	..	..	..	..	..	..	..
1958 March	62.3	45.5	61.4	20.0	..	20.0	..	..	..	..	..	..	..	..	..
September	57.9	57.1	57.8	..	..	..	..	..	..	..	..	..	..	..	..
1959 March	69.6	76.9	70.2	33.3	..	33.3	70.3	100.0	71.5	..	..	..	..	..	..
September	..	..	..	..	..	..	100.0	..	100.0	..	..	..	..	..	..
1960 March	49.6	55.6	50.0	20.0	..	20.0	64.4	..	64.4	..	..	..	..	..	..
September	24.0	25.0	24.1	..	..	..	87.1	100.0	87.9	..	..	..	..	..	..
1961 March	28.8	33.3	29.2	16.7	..	16.7	61.4	100.0	62.1	..	..	..	..	..	..
September	35.1	44.4	38.5	..	..	..	72.7	..	72.7	..	..	..	..	..	..
1962 March	47.4	50.0	47.6	42.9	..	42.9	75.5	100.0	76.8	86.7	..	86.7	..	..	..
September	43.3	33.3	42.7	..	..	..	70.3	100.0	71.1	..	..	..	..	..	..
1963 March	53.0	36.4	52.1	37.5	..	37.5	59.6	100.0	60.3	100.0	..	100.0	71.0	57.1	68.4
September	66.3	66.6	66.3	..	..	..	71.2	..	71.2	..	..	..	..	..	..
1964 March	55.4	61.9	56.0	25.0	..	25.0	51.8	66.7	52.5	100.0	..	100.0	64.3	90.0	71.1
September	34.2	71.4	38.1	..	..	..	68.2	100.0	68.9	..	..	..	..	..	..
1965 March	41.0	58.5	42.0	25.0	20.0	24.0	86.7	100.0	87.5	91.7	..	91.7	82.6	100.0	86.2
September	54.5	50.0	54.5	..	..	..	83.3	..	83.3	..	..	..	..	..	..
1966 March	61.1	86.7	63.0	33.3	..	29.4	45.8	..	45.8	92.0	..	92.0	84.6	..	84.6
September	57.6	55.6	57.4	..	..	..	100.0	100.0	100.0	..	..	..	..	..	..

TABLE 124

## Pass percentage in Post-Graduate Degree Examinations in 1957 to 1966

Year	M.A.			M.Sc.			M.Com.		
	Boys	Girls	Total	Boys	Girls	Total	Boys	Girls	Total
	1	2	3	4	5	6	7	8	9
1957	78.9	95.8	83.2	98.8	91.7	97.1	..	..	..
1958	91.2	93.1	91.9	87.2	100.0	90.2	..	..	..
1959	77.8	79.5	87.3	86.7	100.0	89.3	..	..	..
1960	80.6	89.8	83.3	89.5	100.0	92.1	..	..	..
1961	82.8	94.7	86.5	84.7	89.8	86.0	..	..	..
1962	92.9	93.3	93.0	96.4	90.7	94.4	..	..	..
1963	82.5	92.3	85.8	93.4	93.8	93.5	90.4	33.3	78.3
1964	84.0	88.6	85.6	82.4	92.4	85.6	88.1	100.0	88.7
1965	83.7	84.8	84.1	83.7	85.6	84.4	92.6	75.0	91.4
1966	88.3	91.2	89.2	78.7	84.6	81.0	92.4	50.0	92.4

TABLE 125

## Kerala University Examination Results (1970-71 and 1971-72)

Sl. No.	Name of Examinations	1970-71			1971-72		
		Number appeared	Number passed	Pass percentage	Number appeared	Number passed	Pass Percentage
(1)	(2)	(3)	(4)	(5)	(6)	(7)	(8)
1. Pre Degree		53419	22932	43.0	49237	21471	43.8
2. Degree	B.A.	9140	7008	76.7	6021	5657	70.5
	B.Sc.	11732	8000	68.7	6837	6341	71.7
	B.COM.	2699	1530	56.7	1682	910	54.4
Post-graduate:	M.A.	1294	1085	83.8	1290	1103	85.5
	M.Sc.	814	637	78.2	892	751	84.1
	M.COM.	138	125	90.6	220	178	80.9
	M.S.W.	36	35	91.7	31	28	90.1
Professional Law	L.L.B./B.L.	285	222	77.9	462	325	70.3
	L.L.B.	20	7	30.5	27	9	33.3
Engineering	B.Sc.	N.A.	N.A.	..	324	247	76.4
	M.Sc.	N.A.	N.A.	..	85	51	60.0
Medical	M.B.B.S./B.D.S.	777	N.A.	..	733	386	52.6
	MS/MD/MDS	134	78	58.2	156	90	57.6
Agriculture	B.Sc.	107	79	73.8	56	40	71.4
	M.Sc.	22	22	100.0	19	19	100.0
Veterinary	B.V.Sc.	43	34	79.1	70	58	82.8
	M.V.Sc.	4	4	100.0	N.A.	N.A.	..
Ayurveda	B.A.M.	N.A.	N.A.	..	N.A.	N.A.	..
	K.A.M.	27	11	40.7	9	9	100.0
Teaching	D.Ed.	2276	1603	70.4	2105	1689	80.2
	M.Ed.	35	34	97.0	39	36	92.3
Library science	B.Lib.	42	35	83.3	39	34	87.3
Pharmacy	B.Pharm	..	..	..	39	17	43.5
Oriental Title Examinations		2626	1867	71.0	2582	2042	79.0
Diploma and Certificate Examinations		240	197	80.1	297	235	79.1

TABLE 126

## Number of Teachers in the different Categories of Colleges under the University of Kerala during 1969-70 to 1971-72

## Government Colleges.

Sl.No.	Type of college	No. of Teachers								
		1969-70			1970-71			1971-72		
(1)	(2)	M.	W.	T.	M.	W.	T.	M.	W.	T.
(1)	(2)	(3)	(4)	(5)	(6)	(7)	(8)	(9)	(10)	(11)
1	Arts & Science Colleges	234	173	407	223	181	404	287	217	504
2	Law College	18	1	19	21	1	22	23	3	26
3	Training Colleges	11	4	15	12	3	15	12	3	15
4	Engineering Colleges	152	9	161	233	12	245	116	16	132
5	Medical Colleges	235	119	354	248	125	373	248	119	367
6	Ayurveda Colleges	12	7	19	16	13	29	16	13	29
7	Agricultural College	55	8	63	40	8	48	..	..	..
8	Veterinary College	..	..	..	..	..	..	..	..	..
9	Junior Colleges	34	10	44	32	12	44	..	..	..
10	University Departments	146	16	162	127	16	143	95	12	107
Total		897	347	1244	952	371	1323	797	363	1160

M=Men  
W=Women  
T=Total

TABLE 127

Number of Teachers in different Categories of Colleges under the University of Kerala during 1969-70 to 1971-72

Private Colleges

Sl.No.	Type of Colleges	No. of Teachers								
		1969-70			1970-71			1971-72		
		M.	W.	T.	M.	W.	T.	M.	W.	T.
(1)	(2)	(3)	(4)	(5)	(6)	(7)	(8)	(9)	(10)	(11)
1	Law Colleges	5	..	5	8	..	8	10	..	10
2	Training Colleges	72	36	108	66	39	105	64	36	100
3	Engineering Colleges	99	6	105	99	8	107	101	6	107
4	Medical Colleges	52	18	70	58	23	81	64	20	84
5	Ayurveda College	..	..	..	..	..	..	..	..	..
6	Agricultural College	..	..	..	..	..	..	..	..	..
7	Veterinary College	..	..	..	..	..	..	..	..	..
8	Junior Colleges	509	141	650	499	137	636	503	151	654
9	University Department	..	..	..	..	..	..	..	..	..
10	Arts & Science Colleges	2457	1024	3481	2625	1122	3747	2671	1126	3797
	Total	3194	1225	4419	3353	1329	4682	3413	1339	4752

TABLE 128

Number of Polytechnics in Kerala and in take capacity from 1967-68 to 71-72

Year	No. of Polytechnics			Intake capacity		
	Government	Private	Total	Government	Private	Total
	(2)	(3)	(4)	(5)	(6)	(7)
1967-68	9	7	16	1400	1020	2420
1968-69	11	6	17	1058	768	1826
1969-70	10	7	17	978	828	1806
1970-71	*7	7	14	1134	848	1982
1971-72	†10	7	17	1232	852	2084

\* The School of Arts Trivandrum and the school of Printing Technology Shornur are considered separately during 70-71. Textile Technology is merged with Central Polytechnic, Trivandrum.

† The 3 Womens Polytechnics are also included.

TABLE 129

Number of Industrial Training Institutes in Kerala and intake capacity from 1967-68 to 1971-72

Year	No. of Industrial Training Institutes			Intake capacity		
	Government	Private	Total	Government	Private	Total
	(2)	(3)	(4)	(5)	(6)	(7)
1967-68	10	25	35	6604	1732	8336
1968-69	10	25	35	6604	1716	8320
1969-70	10	26	36	3384	1976	5360
1970-71	10	26	36	6000	2240	8240
1971-72	10	28	38	6604	2172	8776

TABLE 130  
Government Expenditure on Education in Kerala 1961-62 to 1970-71

Sl. No.	HEAD	1961-62	1962-63	1963-64	1964-65	1965-66
(1)	(2)	(3)	(4)	(5)	(6)	(7)
1	University Education	11072065	11185439	53656234	14350424	16969648
2	General Education	167757163	171926528	185467461	202443989	232449371
3	Technical Education	4824346	6111968	8225403	8099407	9436887
4	Labour and Employment	1030148	2190403	3897364	5056939	4987199
	TOTAL	185483722	191414538	210946462	230749759	233743116
	Plan	19316165	16838720	27823418	41906644	60412973
	Non-plan	166167557	174575818	183121044	188843115	223330143

TABLE 130 (Contd.)

## Government Expenditure on Education in Kerala

HEAD	1966-67	1967-68	1968-69	1969-70	1970-71	
(8)	(9)	(10)	(11)	(12)	(13)	
1	University Education	32774457	29866404	30923824	37006824	53295856
2	General Education	296878962	366938506	422131022	490737322	525304462
3	Technical Education	17026969	11749268	13342009	15777520	16210586
4	Labour and Employment	7079935	6231256	6175066	6486275	6425713
	TOTAL	347460323	414785404	472572721	550007946	601236617
	Plan	37223835	37974563	49415327	13349276	31834899
	Non-Plan	310236488	376810841	423157394	531658670	569401718

TABLE 131

## Per Capita Government Expenditure on Education in Kerala—1957-58 to 1970-71.

Year	Population in lakhs	Government Expenditure on education (Rs. in lakhs)	Expenditure per head (Rs.)
(1)	(2)	(3)	(4)
1957-1958	158.18	997.00	6.30
1958-1959	161.72	1317.00	8.14
1959-1960	165.34	1475.22	8.92
1960-1961	169.04	1616.80	9.56
1961-1962	173.49	1854.84	10.70
1962-1963	177.95	1914.14	10.75
1963-1964	182.42	2109.46	11.56
1964-1965	186.89	2307.50	12.35
1965-1966	191.37	2837.43	14.83
1966-1967	196.23	3474.60	17.49
1967-1968	201.24	4147.85	20.61
1968-1969	203.48	4663.98	22.92
1969-1970	208.15	5428.98	26.08
1970-1971	212.80	5842.24	27.45

TABLE 132

## Progress of Government Expenditure on General School Education in Kerala—1961-62 to 1971-72.

Year	Rs. (in crores)	Index of increase
(1)	(2)	(3)
1961-1962	16.83	100
1962-1963	17.11	102
1963-1964	18.46	110
1964-1965	19.88	118
1965-1966	25.23	150
1966-1967	29.33	174
1967-1968	36.66	213
1968-1969	42.21	251
1969-1970	49.07	292
1970-1971 (Revised Estimate)	51.41	305
1971-1972 (Budget Estimate)	56.51	336

TABLE 133

## Per Capita Expenditure on Education in various Indian states.

Sl. No.	State	Per capita expenditure				% Increase from 1966-67 to 1969-1970
		1966-67	1967-68	1968-69	1969-1970	
(2)	(2)	(3)	(4)	(5)	(6)	(7)
1	Andhra	7.98	8.22	10.54	12.22	53.13
2	Assam	10.55	10.94	13.93	16.27	54.22
3	Bihar	4.29	4.54	5.66	8.65	101.63
4	Gujarat	8.95	11.12	11.68	13.22	47.71
5	Haryana	..	..	14.75	16.41	11.25
6	Jammu and Kashmir	14.56	..	18.40	19.97	37.16
7	Kerala	18.48	20.19	22.86	25.18	36.26
8	Madhya Pradesh	8.68	10.48	10.94	11.66	34.33
9	Madras	11.97	14.09	15.15	16.09	34.42
10	Maharashtra	9.01	11.77	14.64	14.86	64.93
11	Mysore	10.60	11.52	13.20	15.38	44.15
12	Nagaland	..	..	..	64.65	..
13	Orissa	7.02	8.11	9.22	9.75	38.60
14	Punjab	..	..	17.92	18.97	5.86*
15	Rajasthan	9.23	11.13	12.41	14.82	59.70
16	Uttar Pradesh	5.54	6.05	6.88	7.87	42.06
17	West Bengal	9.14	10.01	10.81	13.69	49.78
	INDIA	..	..	11.08	12.53	13.09*

\*Percentage increase in 1969-1970 over 1968-1969.

TABLE 134

## Expenditure on Education as Percentage to total Expenditure in various states

Sl. No.	States	Percentage of Expenditure on Education	
		1970-1971	1971-1972
(1)	(2)	(3)	(4)
1	Andhra Pradesh	10.9	18.9
2	Assam	18.8	18.9
3	Bihar	7.3	17.4
4	Gujarat	10.8	19.2
5	Haryana	19.9	17.0
6	Jammu and Kashmir	11.7	11.5
7	Kerala	33.4	31.1
8	Madhya Pradesh	21.8	19.4
9	Maharashtra	11.3	19.0
10	Mysore	20.1	20.3
11	Nagaland	9.3	9.9
12	Orissa	12.0	16.7
13	Punjab	23.3	21.7
14	Rajasthan	15.3	20.3
15	Tamilnadu	12.2	23.0
16	Uttar Pradesh	11.1	19.3
17	West Bengal	19.4	20.2
	ALL STATES	15.5	19.4



---

SECTION-II

**Health Services**

---

TABLE 1

## Districtwise Number of Medical Institutions (Allopathic) 1950-51

Sl.No.	Name of district	Government hospitals	Government dispensaries and T.B. clinics	Primary Health Centres	Secondary health Centres	Grant-in-aid-institutions	Rural dispensaries	M.C.H. centres	Total number of institutions	Number of beds available	Remarks
1	2	3	4	5	6	7	8	9	10	11	12
1	cannanore	4	2	..	..	1	..	..	7	329	
2	Kozhikode	5	2	..	..	2	..	..	9	1001	
3	Palghat	4	3	6	..	1	..	..	14	348	
4	Trichur	11	7	..	..	13	..	..	31	1214	
5	Ernakulam	7	25	..	..	7	..	..	39	828	
6	Kottayam	5	31	..	..	5	..	..	41	319	
7	Alleppey	6	21	..	..	..	..	..	27	1112	
8	Quilon	3	17	..	..	1	..	..	21	320	
9	Trivandrum	11	27	..	..	3	..	..	41	1202	
	KERALA	56	135	6	..	33	..	..	230	6752	

Number of beds in grant-in-aid institutions included 1665

TABLE 2

## Districtwise Number of Medical Institutions (Allopathic) 1951-52

1	Cannanore	4	2	..	..	1	..	..	7	329	
2	Kozhikode	5	2	..	..	2	..	..	9	1001	
3	Palghat	4	3	6	..	1	..	..	14	348	
4	Trichur	11	7	..	..	12	..	..	30	1196	
5	Ernakulam	6	26	..	..	6	..	..	38	902	
6	Kottayam	5	29	..	..	5	..	..	39	399	
7	Alleppey	8	20	..	..	..	..	..	28	1310	
8	Quilon	3	16	..	..	1	..	..	20	327	
9	Trivandrum	12	29	..	..	3	..	..	44	1668	
	KERALA	58	134	6	..	31	..	..	229	7480	

Number of beds in grant-in-aid institutions included 1599

TABLE 3

## Districtwise Number of Medical Institutions (Allopathic) 1952-53

1	Cannanore	4	2	..	..	1	..	..	7	329	
2	Kozhikode	5	2	..	..	2	..	..	9	1001	
3	Palghat	4	3	6	..	1	..	..	14	350	
4	Trichur	11	3	..	..	12	..	..	31	1194	
5	Ernakulam	6	27	..	..	6	..	..	39	902	
6	Kottayam	5	29	..	..	5	..	..	39	399	
7	Alleppey	8	21	..	..	..	..	..	29	1310	
8	Quilon	3	16	..	..	1	..	..	20	327	
9	Trivandrum	12	30	..	..	3	..	..	45	1668	
	KERALA	58	133	6	..	31	..	..	233	7480	

Number of beds in grant-in-aid Institutions included 1599

TABLE 4

## Districtwise Number of Medical Institutions (Allopathic) 1953-54

Sl. No.	Name of district	Government hospitals	Government dispensaries and T.B. clinics	Primary health centres	Secondary health centres	Grant-in-aid institutions	Rural dispensaries	M.C.H. centres	Total number of institutions	Number of beds available	Remarks
1	2	3	4	5	6	7	8	9	10	11	12
1	Cannanore	4	2	..	..	1	..	..	7	329	
2	Kozhikode	5	2	..	..	2	..	..	9	1001	
3	Palghat	4	8	6	..	1	..	..	19	335	
4	Trichur	10	4	..	..	12	..	..	26	1223	
5	Ernakulam	6	29	..	..	6	..	..	41	918	
6	Kottayam	5	30	..	..	5	..	..	40	509	
7	Alleppey	8	22	..	..	1	..	..	31	1371	
8	Quilon	3	18	..	..	1	..	..	22	350	
9	Trivandrum	13	31	..	..	3	..	..	47	2133	
	KERALA	58	146	6	..	32	..	..	242	8219	

Number of beds in Grant-in-aid Institutions included 1876

TABLE 5

## Districtwise number of Medical Institutions (Allopathic) Year 1954-1955

1	Cannanore	4	2	..	..	1	..	..	7	329
2	Kozhikode	5	2	..	..	2	..	..	9	1001
3	Palghat	4	8	6	..	1	..	..	19	335
4	Trichur	10	11	..	..	13	..	..	34	1264
5	Ernakulam	6	31	..	..	7	..	..	44	1004
6	Kottayam	5	29	..	..	5	..	..	39	527
7	Alleppey	8	22	..	..	1	..	..	31	1316
8	Quilon	3	19	..	..	1	..	..	23	361
9	Trivandrum	13	32	..	..	2	..	..	47	2134
	KERALA	58	156	6	..	33	..	..	253	8321

Number of beds in Grant-in-aid Institutions included 1844

TABLE 6

## Districtwise number of Medical Institutions (Allopathic) 1955-56

1	Cannanore	4	3	6	..	1	..	..	14	365
2	Kozhikkode	6	7	..	..	2	..	..	15	1053
3	Palghat	5	13	6	..	1	..	..	25	415
4	Trichur	10	11	5	1	13	..	..	40	1499
5	Ernakulam	7	32	9	..	7	..	1	56	1322
6	Kottayam	5	23	3	..	5	..	2	38	543
7	Alleppey	8	19	8	..	1	..	1	37	1504
8	Quilon	3	17	4	1	1	..	1	27	393
9	Trivandrum	11	25	10	2	2	..	1	51	2311
	Kerala	59	150	51	4	33	..	6	303	9405

Number of beds in Grant-in-aid Institutions included 1844

TABLE 7

## Districtwise Number of Medical Institutions (Allopathic) Year 1960-61

1	Cannanore	5	17	8	1	..	..	..	31	886
2	Kozhikkode	7	19	8	1	..	..	..	35	1433
3	Palghat	5	26	8	1	..	..	..	40	741
4	Trichur	12	19	6	1	..	..	..	38	1947
5	Ernakulam	7	27	12	1	..	..	..	47	1684
6	Kottayam	4	26	6	1	..	..	..	37	755
7	Alleppey	8	17	12	1	..	..	..	38	1619
8	Quilon	5	21	9	1	..	..	..	36	810
9	Trivandrum	14	25	13	2	..	..	..	54	3131
	Kerala	67	197	82	10	..	..	..	356	1806

\* Grant-in-aid Institutions not included.

TABLE 8

## Districtwise number of Medical Institutions (Allopathic) Year 1965-66

Sl. No.	Name of District	Government Hospitals	Government Dispensaries & T.B. Centres	Primary Health Centres	Secondary Health Centres	Grant-in-aid Institutions	Rural Dispensaries	M.C.H. Centres	Total No. Institutions	No. of beds available	Remarks
1	2	3	4	5	6	7	8	9	10	11	12
1	Cannanore	7	29	12	..	..	..	..	48	1215	
2	Kozhikode	11	23	20	..	2	..	..	56	265	
3	Palghat	9	32	15	..	2	..	..	58	984	
4	Trichur	15	19	16	..	3	..	..	53	2802	
5	Ernakulam	16	30	19	..	2	..	..	67	2397	
6	Kottayam	10	24	16	..	..	..	1	51	1332	
7	Alleppey	10	17	20	..	1	..	..	48	2221	
8	Quilon	9	22	18	..	..	..	..	49	1166	
9	Trivandrum	14	21	19	1	3	1*	1	60	4144	*Mobile Dental Clinic
	Kerala	101	217	155	1	13	1	2	490	18526	

No. of beds in grant-in-aid Institutions included 1150

TABLE 9

## Districtwise Number of Medical Institutions (Allopathic) Year 1966-67

1	Cannanore	7	31	13	..	..	..	..	51	1379	
2	Kozhikode	11	25	23	..	2	..	..	61	2767	
3	Palghat	11	32	15	..	2	..	..	60	1136	
4	Trichur	16	18	17	..	3	..	..	54	2816	
5	Ernakulam	17	29	19	..	3	..	..	68	2429	
6	Kottayam	10	24	17	..	..	..	..	51	1353	
7	Alleppey	10	17	20	..	1	..	..	48	2595	
8	Quilon	9	22	19	..	..	..	..	50	1251	
9	Trivandrum	14	21	19	1	3	1*	1	60	4224	*Mobile Dental Clinic
	Kerala	105	219	162	1	14	1	1	503	19950	

No. of beds in grant-in-aid Institutions included 1167

TABLE 10

## Districtwise Number of Medical Institutions (Allopathic) Year 1967-68

1	Cannanore	9	30	13	..	..	..	..	52	1399	
2	Kozhikode	11	29	24	..	2	..	..	66	2804	
3	Palghat	11	35	15	..	2	..	..	63	1192	
4	Trichur	16	17	17	..	3	..	..	53	2863	
5	Ernakulam	17	29	19	..	3	..	..	68	2446	
6	Kottayam	10	26	17	..	..	..	..	53	1403	
7	Alleppey	10	19	20	..	2	..	..	51	2525	
8	Quilon	9	24	19	..	..	..	..	52	1260	
9	Trivandrum	14	21	19	1	3	1	1	60	4274	*Mobile Dental Clinic
	Kerala	107	230	163	1	15	1	1	518	20166	

Number of beds in grant in Aid Institutions included 1194

TABLE 11

## Districtwise Number of Medical Institutions (Allopathic) Year 1968-69

Sl. No.	Name of district	Government hospitals	Government dispensaries & T.B. clinics	Primary health centres	Secondary health centres	Grant-in-aid institutions	Rural dispensaries	M. C. H. centres	Total number of institutions	Number of beds available	Remarks
1	2	3	4	5	6	7	8	9	10	11	12
1	Cannanore	9	31	13	..	..	..	..	53	1419	
2	Kozhikode	11	32	24	..	2	..	..	69	2816	
3	Palghat	11	36	15	..	2	..	..	64	1192	
4	Trichur	16	18	17	..	3	..	..	54	2863	
5	Ernakulam	17	32	19	..	3	..	..	71	2446	
6	Kottayam	10	26	17	..	..	..	..	53	1407	
7	Alleppey	10	20	20	..	2	..	..	52	2525	
8	Quilon	9	25	19	..	..	..	..	53	1305	
9	Trivandrum	15	21	18	1	3	1*	1	60	4306	* Mobile Dental Clinic
	Kerala	108	241	162	1	15	1	1	529	20279	

Number of beds in Grant-in-aid Institutions included 1194

TABLE 12

## Districtwise Number of Medical Institutions (Allopathic) 1969-70

1	Cannanore	9	34	13	..	..	..	..	56	1415	
2	Kozhikode	7	17	15	..	2	..	..	41	2893	
3	Malappuram	6	20	12	..	..	..	..	38	607	
4	Palghat	9	31	11	..	1	..	..	52	1029	
5	Trichur	16	19	18	..	3	..	..	56	2881	
6	Ernakulam	17	34	19	..	3	..	..	73	2449	
7	Kottayam	10	26	17	..	..	..	..	53	1775	
8	Alleppey	10	20	20	..	2	..	..	52	2541	
9	Quilon	9	25	19	..	..	..	..	53	1297	
10	Trivandrum	15	21	18	1	3	1*	1	60	4282	* Mobile dental hospital
	Kerala	108	247	162	1	14	1	1	534	21169	

Number of beds in Grand-in-aid institutions included 1191

TABLE 13

## Districtwise Number of Medical Institutions (Allopathic) year 1970-71

1	Cannanore	9	39	13	..	..	..	..	61	1439	
2	Kozhikode	7	16	15	..	2	..	..	40	3014	
3	Malappuram	6	21	12	..	..	..	..	39	699	
4	Palghat	9	32	11	..	2	..	..	54	993	
5	Trichur	17	21	18	..	3	..	..	59	2949	
6	Ernakulam	18	33	19	..	3	..	..	73	2568	
7	Kottayam	12	27	17	..	..	..	..	56	1791	
8	Alleppey	10	24	20	..	2	..	..	56	2605	
9	Quilon	9	27	19	..	..	..	..	55	1320	* Mobile Dental Clinic
10	Trivandrum	15	21	18	1	3	1*	1	60	4399	
	Kerala	112	261	162	1	15	1	1	553	21777	

No. of beds in Grant-in-aid institutions included 1233

TABLE 14

Number of Medical Institutions and Beds in Kerala as on 31-3-1971

Sl. No.	District	Hospitals		Secondary Health Centres		Primary Health Centres		Dispensaries	
		Institutions	Beds	Institutions	Beds	Institutions	Beds	Institutions	Beds
1	2	3	4	5	6	7	8	9	10
1	Trivandrum	15	3715	1	122	18	176	20	74
2	Quilon	9	928	..	..	19	204	23	102
3	Alleppey	10	2094	..	..	20	188	22	105
4	Kottayam	12	1482	..	..	17	181	25	128
5	Ernakulam	13	1898	..	..	19	168	29	191
6	Trichur	17	2559	..	..	18	134	20	55
7	Palghat	9	721	..	..	11	69	31	151
8	Malappuram	6	493	..	..	12	84	19	70
9	Kozhikode	7	2513	..	..	15	78	15	100
10	Cannanore	9	1237	..	..	13	56	37	146
	Kerala	112	17640	1	122	162	1338	241	1122

TABLE 14 (Contd.)

Sl. No.	District	M. C. H. Centres		T.B. Centers & T.B. Clinics		Mobile Dental Clinics		Grant in-aid Institutions		Total	
		Institutions	Beds	Institutions	Beds	Institutions	Beds	Institutions	Beds	Institutions	Beds
		11	12	13	14	15	16	17	18	19	20
1	Trivandrum	1	20	1	12	1	..	3	280	60	4399
2	Quilon	..	..	4	86	..	..	..	..	55	1320
3	Alleppey	..	..	2	..	..	..	2	218	56	2605
4	Kottayam	..	..	2	..	..	..	..	..	56	1791
5	Ernakulam	..	..	4	40	..	..	3	271	73	2568
6	Trichur	..	..	1	..	..	..	3	201	59	2949
7	Palghat	..	..	1	52	..	..	2	..	54	993
8	Malappuram	..	..	2	52	..	..	..	..	39	669
9	Kozhikode	..	..	1	60	..	..	2	263	40	3014
10	Cannanore	..	..	2	..	..	..	..	..	61	1439
	Kerala	1	20	20	302	1	..	15	1233	553	21777

TABLE 15

District-wise Distribution of Medical Institutions and Beds (1965-66 to 1970-71)

Sl. No.	District	Institutions						Beds					
		1965-66	1966-67	1967-68	1968-69	1969-70	1970-71	1965-66	1966-67	1967-68	1968-69	1969-70	1970-71
1	2	3	4	5	6	7	8	9	10	11	12	13	14
1	Trivandrum	60	60	60	60	60	60	4144	4224	4274	4366	4282	4399
2	Quilon	49	50	52	53	53	55	1166	1251	1260	1305	1297	1320
3	Alleppey	48	48	51	52	52	56	2221	2495	2525	2525	2541	2605
4	Kottayam	51	51	53	53	53	56	1332	1353	1403	1407	1775	1791
5	Ernakulam	68	68	68	71	73	73	2397	2429	2446	2446	2449	2568
6	Trichur	53	54	53	54	56	69	2802	2816	2863	2863	2881	2949
7	Palghat	58	60	63	64	52	54	984	1136	1192	1192	1029	993
8	Malappuram	..	..	..	..	38	39	..	..	..	..	607	699
9	Kozhikode	56	61	66	69	41	40	2265	2767	2804	2816	2893	3014
10	Cannanore	48	51	52	53	56	61	1215	1379	1399	1419	1415	1439
	Kerala	491	503	518	529	534	553	18529	19850	20166	20279	21169	21777

TABLE 16

Bed-population Ratio in--Kerala-District-wise (1960-61 to 1970-71)

Sl. No.	District	Number of beds available per lakh of population						
		1960-61	1965-66	1966-67	1967-68	1968-69	1969-70	1970-71
1	2	3	4	5	6	7	8	8
1	Trivandrum	180	207	202	199	194	187	200
2	Quilon	42	52	54	53	53	51	55
3	Alleppey	89	112	122	120	119	117	123
4	Kottayam	44	67	65	66	64	79	86
5	Ernakulam	91	117	114	112	110	108	108
6	Trichur	119	157	151	150	142	140	139
7	Palghat	42	52	58	60	58	63	59
8	Malappuram	..	..	..	..	..	35	38
9	Kozhikode	55	77	90	89	87	149	145
10	Cannanore	50	60	65	65	63	62	61
	Kerala	77	98	101	100	98	100	102

TABLE 17

Progress of Medical &amp; Public Health Institutions--During Plan Periods (1950-51 to 1970-71)

Sl. No.	Institutions	1950-51	1970-71	Percentage-increase
1	2	3	4	5
1	No. of Hospitals	56	112	200
2	No. of Dispensaries, T. B. Clinics and other private grant in aid institutions.	135	279*	206
3	No. of Primary Health Centres	6	162	2700
4	Total number of Beds in all the institutions above	6752	21777**	322

\* Grant in aid Institutions: 15

\*\* Beds in Grant in aid Institutions 1233

TABLE 18

District wise Distribution of Institutions and Beds under the Indigenous System of Medicine as on 31-3-1971

Sl. No.	District	Number of Hospitals	Number of beds	Number of Dispensaries
1	2	3	4	5
1	Trivandrum	8	410	35
2	Quilon	3	50	32
3	Alleppey	7	90	32
4	Kottayam	5	170	14
5	Ernakulam	9	154	33
6	Trichur	7	128	50
7	Palghat	3	50	31
8	Malappuram	2	20	22
9	Kozhikode	4	50	25
10	Cannanore	4	60	35
	Kerala	53	1182	309

TABLE—19

**Number of patients treated as 'inpatients' and 'Outpatients' in Hospitals and Dispensaries in Kerala (Year-wise and Sex-wise)**

Year	Inpatients	Outpatients	Total number of Patients classified into			
			Male	Female	Children	Total
1	2	3	4	5	6	7
1957	385398	8413136	3271498	3609231	1917805	8798534
1958	460282	10831358	3839112	4471624	2980904	11291640
1959	478141	10147718	3313939	4229823	3082105	10625867
1960	515763	11779574	3835237	5042929	3417171	12295337
1961	576864	14099615	4570356	5799448	4306675	14676479
1962	614234	17695446	206964	285133	122134	18309680
1963	760198	19601962	6659641	8401804	5300715	20362160
1964	750167	22403840	6947367	9454717	6751923	23154007
1965	805448	23224990	7155510	9343189	7531739	24030438
1966	854496	25106661	7979285	10203680	7778192	25961157
1967	995993	24867058	7929531	10307308	7626212	25863051
1968	997113	25648084	8243326	10482179	7919692	26645197
1969	1090688	22823167	7258341	9507298	7148216	23913855
1970*	918246	20372099	6391840	8741949	6156556	21290345

\* Provisional figures

TABLE—20

**Number of Surgical operations and Post-mortem Examinations done in Hospitals Kerala**

Year	Major	Surgical Operations		Postmortem Examinations		
		Minor	Total	Medicolegal purpose	Pathological purpose	Total
1	2	3	4	5	6	7
1957	41437	185062	226499	1829	118	1947
1958	47217	216275	263492	2673	116	2789
1959	35968	171069	207037	2614	117	2731
1960	48035	251461	299496	2473	210	2683
1961	48311	270791	319102	2636	125	2761
1962	52681	237039	289720	2822	96	2918
1963	51589	268575	320164	2348	124	2472
1964	42942	270136	313078	2968	140	3108
1965	51166	267546	318712	3247	62	3309
1966	43578	276719	320297	3686	51	3737
1967	48209	219849	268058	3873	25	3898
1968	48266	246970	295236	4474	104	4578
1969	49330	241760	291090	4801	216	5017
1970*	50013	211181	261194	4704	90	4794

\*Provisional Figures

TABLE 21

**Number of Family Planning Centres in Kerala from 1951 to 1971**

Year	No. of centres
1951-52	11
1955-56	11
1960-61	103
1961-62	193
1962-63	193
1963-64	193
1964-65	196
1965-66	196
1966-67	212
1967-68	212
1968-69	219
1969-70	224
1970-71	260



TABLE—22

No. of Family Planning Centres Functioning in the State category wise-(as on 31-3-1971)

Sl. No.	Centre	State Govt.	Local Bodies	Voluntary Organisations	Total
(1)	(2)	(3)	(4)	(5)	(6)
1	Urban Family Welfare Centre	21	3	7	31
2	Female Sterilisation Wards	9	..	..	9
3	Rural Family Welfare Centres	158	..	3	161
4	Static Sterilisation units	52	..	..	52
5	Mobile Sterilisation Units	10	..	..	10
6	Mobile I.U.C.D. Units	10	..	..	10
	Total	260	3	10	273

Remarks: In addition there are 1603 Rural Sub Centres in the State.

TABLE—23

Categories of Staff Trained and their Number under Family Planning Programme.

Sl. No.	Staff	Trivandrum Centre		Calicut Centre	
		1969-70	Till the end of 1970-71	1969-70	Till the end of 1970-71
(1)	(2)	(3)	(4)	(5)	(6)
1	Medical Officers	122	753	..	..
2	Staff Nurses	51	51	378	435
3	Block Extension Educators	17	101	43	43
4	F.P. Health Assistants	166	236	176	176
5	Auxiliary Nurses Midwives	..	..	18	1696
6	Social Workers	..	19	..	..
7	A.N.M. Students	..	14	..	..
8	Public Health Nursing Students	..	14	..	..
9	Block Development Officers	..	101	..	..
10	Dist. Extension Educators	..	50	..	..
11	Welfare Workers	..	7	..	..
12	Health Visitors	..	181	..	..
13	Nursing Supts. and Sister Tutors.	..	43	..	..

TABLE—24

Details of Sterilisation Operations and I.U.C.D. Insertions Conducted in Kerala]

Year	sterilisation operations			Total	I.U.C.D. insertions
	Men	Womtn	(4)		
(1)	(2)	(3)	(4)	(5)	
1957	521	158	679	..	
1958	1653	1507	3160	..	
1959	4132	2236	6368	..	
1960	3079	1953	5032	..	
1961	3578	2939	6517	..	
1962	4182	2916	7098	..	
1963	10396	2830	13226	..	
1964	17938	3966	21904	..	
1965	36102	6532	42634	23062	
January to March 1966	7274	1270	8544	11750	
1966-67	33069	7205	40274	40760	
1967-68	53756	11399	65155	37553	
1968-69	58775	15065	73840	36062	
1969-70	42142	18404	60546	37708	
1970-71	46621	21396	68017	30584	

Figures up to the Year 1965 according to Calendar Year

TABLE—25

## District-wise achievement of Family Planning Programme from 1966-67 to 1970-71

Year (1)	Method (2)	Tricandrum (3)	Quilon (4)	Allepy (5)	Kottayam (6)	Ernakulam (7)	Trichur (8)	Palghat (9)	Mala- ppuram (10)	Kozhi- kode (11)	Canna- more, (12)	State (13)
1966-67	A	6986	5522	3902	3492	4492	4575	3652	..	4175	3474	40274
	B	4567	6704	7212	3048	5891	4182	4827	..	2189	2140	40760
1967-68	A	10451	8473	8180	5828	7633	6671	3994	..	9090	4830	65155
	B	6963	5554	6109	3872	3998	3220	4239	..	2236	1362	37553
1968-69	A	12150	9096	8610	7650	10652	5516	3422	..	9911	6833	73840
	B	9765	4931	4400	3214	3837	2431	4556	..	1620	1308	36062
1969-70	A	9189	8047	8783	6031	8151	4956	2923	..	7819	4647	60546
	B	7480	6274	6872	4135	3337	2676	3952	..	1519	1463	37708
1970-71	A	9345	7804	6918	5294	21454	5012	1711	1607	4946	3926	68017
	B	7840	5700	4569	2875	2028	2638	2282	1183	722	747	30584

A: Sterilisation operation.

B: I.U.C.D. insertion

TABLE—26

## Family Planning in India : Review of Progress and Target for the IVth Plan.

Sl. No. (1)	Item (2)	Unit (3)	Third plan achievement (4)	IVth Plan Target (5)
1	Expenditure	Rs. in Crores	24.86	80.00
2	Dist. Family Planning Bureau.	Nos.	199	335
3	Rural Family Welfare Centres (Cumulative)	Nos.	3676	5225
4	Rural Sub-Centres (Cumulative)	Nos.	7081	31752
5	Urban Family Welfare Centres (Cumulative)	Nos.	1381	1856
6	Family Planning Training Centres. (Including Central Institutions)	Nos.	30	51

TABLE—27

## State-wise Coverage of population by sterilisation and I.U.C.D. up to 1967-68

Sl. No. (1)	Name of State (2)	Coverage by Sterilisation per 1000 population (3)	Coverage by I.U.C.D. Per 1000 Population (4)
1	Andhra	6.66	2.79
2	Assam	2.06	6.28
3	Bihar	4.04	1.46
4	Gujarat	9.40	5.83
5	Haryana	3.26	12.23
6	Jammu & Kashmir	5.22	6.54
7	Kerala	11.08	5.73
8	Madhya Pradesh	9.23	2.33
9	Maharashtra	14.31	6.46
10	Mysore	8.41	7.46
11	Madras	17.33	0.57
12	Orissa	11.63	2.84
13	Punjab	10.12	26.12
14	Rajasthan	3.65	2.15
15	Uttar Pradesh	4.61	2.98
16	West Bengal	7.15	6.24
	India	8.20	4.65

TABLE 28  
Per Capita Expenditure on Family Planning State-wise 1967-68

Sl. No. (1)	Name of State (2)	Per Capita Expenditure (Rs.) (3)
1	Andhra	0.49
2	Assam	0.16
3	Bihar	0.23
4	Gujarat	0.70
5	Haryana	0.48
6	Jammu & Kashmir	0.65
7	Kerala	0.61
8	Madhya Pradesh	0.48
9	Madras	0.51
10	Maharashtra	0.64
11	Mysore	0.47
12	Orissa	0.67
13	Punjab	0.54
14	Rajasthan	0.52
15	Uttar Pradesh	0.34
16	West Bengal	0.37
	India	0.46

TABLE 29  
Plan Outlay and Expenditure on Medical and Public Health Services Kerala (Rs. in lakhs)

Period (1)	Plan outlay (2)	% to total Plan outlay (3)	Actual Expenditure (4)	% of Expenditure to Plan outlay (5)
Ist Plan 1951-56	192.00	6.39	258.96	135.00
IInd Plan 1956-61	847.74	9.74	655.46	77.32
IIInd Plan 1961-66	1350.00	7.94	1588.49	117.63
Three Annual Plans 1966-67 to 1968-69	477.45	3.48	495.02	103.68
IVth Plan 1969-74	1050.00	4.06	518.00*	49.33*

\* Expenditure for 1969-70 and 70-71 only.

TABLE 30  
Per Capita Government Expenditure on Health Services—State-wise (1965-66 to 1970-71)

Sl. No. (1)	State (2)	Per Capita Expenditure - Rs.					
		65-66 (3)	66-67 (4)	67-68 (5)	68-69 (6)	69-70 (7)	70-71 (8)
1	Andhra Pradesh	3.21	3.68	4.23	4.47	5.27	6.10
2	Assam	3.78	3.91	4.35	4.45	5.28	5.44
3	Bihar	2.09	1.91	2.47	2.47	3.05	3.45
4	Gujarat	3.75	3.77	4.34	5.06	6.18	6.97
5	Jammu & Kashmir	6.52	7.67	NA	9.60	10.10	10.47
6	Kerala	4.49	5.28	5.93	6.82	6.96	7.61
7	Madhya Pradesh	2.89	2.97	3.57	4.11	4.97	5.06
8	Tamil Nadu	3.71	4.19	4.44	5.15	5.90	6.53
9	Maharashtra	4.40	4.23	5.12	6.15	7.47	8.07
10	Mysore	3.03	3.25	3.81	4.20	4.95	5.34
11	Orissa	2.94	2.83	3.76	3.90	4.96	5.41
12	Punjab	3.64	4.50	NA	5.21	6.06	7.71
13	Rajasthan	4.24	4.64	7.13	6.02	7.01	8.15
14	Uttar Pradesh	2.07	2.35	2.42	2.76	3.57	3.51
15	West Bengal	3.44	4.53	5.30	4.92	5.82	6.45
16	Haryana	..	..	..	4.06	5.80	8.34
17	Nagaland	..	..	..	32.09	41.63	34.11
18	Himachal Pradesh	NA	NA	NA	NA	3.57	3.51
	INDIA	NA	NA	NA	4.31	5.16	5.72

TABLE 31  
Bed Population Ratio - State-wise

Sl. No. (1)	Name of State (2)	Number of beds available per 1000 population as on 31-3-1968. (3)
1	Andhra	0.61
2	Assam	0.33
3	Bihar	0.31
4	Gujarat	0.43
5	Haryana	0.43
6	Jammu & Kashmir	1.02
7	Kerala	0.99
8	Madhya Pradesh	0.38
9	Maharashtra	0.79
10	Mysore	0.81
11	Nagaland	1.75
12	Orissa	0.36
13	Punjab	0.66
14	Rajasthan	0.52
15	Tamil Nadu	0.69
16	Uttar Pradesh	0.41
17	West Bengal	0.87
	INDIA	0.57

TABLE 32  
Medical Institutions and Beds—State-wise (1965)

Sl. No. (1)	Number of State (2)	No. of Hospitals (3)	No. of Dispensaries (4)	Beds (5)
1	Andhra	311	160	28473
2	Assam	77	724	5922
3	Bihar	157	712	28473
4	Jammu & Kashmir	26	573	5922
5	Kerala	115	216	17183
6	Madhya Pradesh	196	526	14594
7	Madras	NA	NA	18610
8	Maharashtra	388	992	35871
9	Mysore	178	605	21098
10	Nagaland	29	31	701
11	Orissa	183	302	8588
12	Punjab	179	469	15421
13	Rajasthan	387	301	12077
14	Uttar Pradesh	826	996	30873
15	West Bengal	265	517	33167

NA. Not available.

TABLE 33  
Progress of Health Services and Medical Manpower in India

	1950-51	1951-56	1960-64	1965-66
Hospital and Dispensaries:				
Institutions	86000	10000	12600	14600
Beds	113000	125000	185600	240100
Primary Health Units	—	725	2800	5000
Medical Education:				
Medical Colleges	30	42	57	87
Annual Admissions	2500	3500	5800	10625
Dental Education:				
Dental Colleges	4	7	10	13
Annual Admissions	150	231	281	600
Training Programmes:				
Doctors	56000	65000	70000	86000
Nurses	15000	18500	27000	45000
Auxiliary Nurse & Midwives	8000	12750	19900	36000
Health visitors	521	800	1500	4200
Nurse-dai/dais	1800	6400	11500	25000
Sanitary Inspectors	3500	4000	6000	18000
Pharmacists	N.A.	N.A.	43000	48000
Control of Communicable Diseases:				
Malaria units	..	133	390	39325
Population Covered (millions)	..	107	438	497
Filaria unit	..	11	48	48
Population covered (Millions)	..	15.1	24.6	N.A.
Tuberculosis:				
B.C.G.Teams	15	119	167	187
T.B.Clinics	110	160	220	427
T.B.demonstration and training centres:	10371	22000	26500	35000
Leprosy Subsidiary centres	..	33	135	178
Venereal diseases	..	..	..	..
V.D.Clinics	..	—	83	140
Maternity and Child Welfare Centres:	1651	1856	4500	10000

TABLE 34  
Health activities - 1960-61 and 1965-66 selected achievements All India

Sl. No.	Item	1960-61 (Nos.) (3)	1965-66 (Nos.) (4)
(1)	(2)		
1	Beds in Hospitals	185600	240100
2	Primary Health Centres	2800	4631
3	Medical Colleges	57	87
4	Annual Admissions	5800	10520
5	Dental Colleges	10	13
6	Annual Admissions	281	506
7	Doctors	70000	86000
8	Nurses	27000	45000
9	Auxiliary Nurses, Midwives etc.	19900	36000
10	National Malaria Eradication Programme (Units)	390	393.25
11	Tuberculosis Control clinics	220	427
12	Demonstration and Trg. Centres	10	15
13	Isolation Beds	26500	35000

TABLE 35

## Health Programmes—All India Achievements as on 30-9-1968

(1)	Name of State or Territory (2)	Estimated population in 1968-69 (Million) (3)	Medical Colleges Nos. (4)	Primary Health Centres on 30-9-1968 (5)	Community Development Block without P.H. Centres (6)	Sub Centres as on 30-9-68 (7)	Beds per 1000 population (8)
1	Andhra	41.771	8	409	9	1122	0.61
2	Assam	14.857	3	99	77	277	0.45
3	Bihar	55.427	4	587	..	3523	0.74
4	Gujarat	25.363	5	250	..	1497	0.46
5	Haryana	9.574	1	89	..	482	0.44
6	Jammu & Kashmir	3.953	1	69	4	118	1.00
7	Kerala	20.424	4	163	..	1584	0.94
8	Madhyapradesh	39.067	6	428	29	1220	0.32
9	Maharashtra	47.979	11	382	..	2776	0.50
10	Mysore	28.155	9	265	..	1964	0.52
11	Nagaland	0.448	..	6	11	..	2.25
12	Orissa	20.795	3	306	8	747	0.37
13	Punjab	14.043	4	126	3	659	0.69
14	Rajasthan	25.047	5	231	1	549	0.51
15	Tamilnadu	38.344	9	293	78	1461	0.70
16	U. P.	87.393	8	688	..	2902	0.37
17	West Bengal	42.886	6	222	113	542	0.58
18	Andaman & Nihobar Islands	0.077	..	1	4	1	1.00
19	Chandigarh	0.145	..	..	1	..	5.51
20	Dadra and Nagar Havily	0.070	..	2	..	..	2.80
21	Delhi	3.894	3	5	2	15	2.40
22	Goa, Daman and Diu	0.760	1	19	..	..	2.30
23	Himachal Pradesh	3.456	1	72	6	251	0.60
24	L.M.A. Islands	0.029	..	7	..	..	3.44
25	Manipur	0.946	..	12	4	38	0.57
26	N.E.F.A.	0.408	..	74	..	..	2.80
27	Pondicherry	0.448	1	12	1	..	0.95
28	Tripura	1.385	..	23	..	22	0.33
	India	5270.144	93	4840	351	21752	0.49

TABLE 36

## Estimated Medical Personnel Requirements for Each State (Based on 1961 Census)

State (1)	General practitioners	Surgeons	Eye&ENT-Specialists	Obstetrician & Gynaecologist	Physicians	Pediatricians
	Economic		Feasibility		Ratios	
	1 for 3000 (2)	1 for 20,000 (3)	1 for 30,000 (4)	1 for 40,000 (5)	1 for 30,000 (6)	1 for 30,000 (7)
Andhra Pradesh	12300	1845	1230	900	1230	1230
Assam	4100	615	410	300	410	410
Bihar	16400	2640	1640	1200	1640	1640
Gujarat	6866	1030	686	515	686	686
Jammu & Kashmir	1200	175	120	88	120	120
Kerala	5600	840	560	420	560	560
Madhya Pradesh	10766	1515	1010	757	1010	1010
Madras	11200	1630	1120	840	1120	1120
Maharashtra	13167	1975	1317	988	1317	1317
Mysore	7833	1175	783	587	783	783
Orissa	5838	875	583	438	583	583
Punjab	6733	1010	673	505	673	673
Rajasthan	6730	1008	670	504	670	670
Uttar Pradesh	24567	3686	2457	1843	2457	2457
West Bengal	11633	1745	1163	872	1163	1163
Delhi	880	132	88	61	88	88
Himachal Pradesh	433	65	43	33	43	43
Total	146261	21830	14596	10851	14596	14596

TABLE 36 (Contd.)

States 1	X-ray Technicians	Urologists	Pathologists	Orthopaedists	Sermatologists	Psychiatrists
	Economics		Feasibility		Ratios	
	1 for 60,000 8	1 for 1,20,000 9	1 for 2,00,000 10	1 for 2,00,000 11*	1 for 2,00,000 12	1 for 2,00,000 13
Andhra Pradesh	615	310	185	185	185	185
Assam	205	103	62	62	62	62
Bihar	820	410	247	247	247	247
Gujrat	343	171	103	103	103	103
Jammu & Kashmir	60	30	18	18	18	18
Kerala	280	140	84	84	84	84
Madhya Pradesh	505	252	161	161	161	161
Madras	560	280	168	168	168	168
Maharashtra	609	304	198	198	198	198
Mysore	391	195	117	117	117	117
Orissa	291	145	87	87	87	87
Punjab	337	168	101	101	101	101
Rajasthan	336	167	100	100	100	100
Uttar Pradesh	1218	609	368	368	368	368
West Bengal	581	299	175	175	175	175
Delhi	44	22	13	13	13	13
Himachal Pradesh	29	..	6	6	6	6
Total	9030	3649	2183	2183	2183	2183

TABLE 37

## Estimated Number of Active Doctors and their Ratio to Population (1950-1970) All India

Year 1	Number of active Doctors 2	Estimated Population in millions 3	Doctor Population Ratio 4
1950	56000	358	1: 6393
1955	65000	389	1: 5985
1960	70000	431	1: 6157
1965	81000	482	1: 5951
1970*	97000	543	1: 5598

\*Provisional

TABLE 38

## Annual Intake and Out-turn of Medical Graduates-All India

Year 1	No. of medical colleges 2	Annual intake 3	Annual out-turn 4
1961	66	7008	4068
1962	71	7348	3992
1963	79	9667	4179
1964	81	10227	4415
1965	87	10520	5135
1966	89	11079	6159
1967	91	11106	7407
1968	93	11500	9080
1973*	103*	13000*	10300*

\* 1973 Provisional Estimates.

TABLE 39

## No. of Medical Practitioners under the Different Systems

Sl. No. (1)	System (2)	Class of Registration (3)	1969-70 (4)	1970-71 (5)
1	Modern Medicine	A	4546	4677
		B	635	635
		Listed	204	204
		sub: Total	5385	5516
2	Homoeopathy	A	558	595
		B	1488	1489
		Listed	253	278
		sub: Total	2299	2362
3	Ayurveda	A	2832	2874
		B	6108	6108
		Listed	590	593
		sub: Total	9530	9575
4	siddha	A	34	36
		B	1218	1218
		Listed	41	41
		sub: Total	1293	1295
5	Unani	A	Nil.	Nil.
		B	51	51
		Listed	5	5
		sub: Total	56	56
Grand Total			18563	118804

TABLE 40

## Stock of Para Medical Personnel (All India)

Category (1)	1965-66 (2)	1968-69* (3)	1973-74 (Target) (4)
Nurses	45000	61000	88000*
Auxiliary Nurses/ Midwives	22000	34000	54000
Health & Sanitary Inspectors	18000	20000	32000
Pharmacists	48000	51000	66000
Laboratory Technicians	2000	3200	8600
Radiographers	700	1300	4300

\* Fourth Five Year Plan Estimates.

TABLE 41

## Details of Rural Water Supply Schemes Commissioned (1970-71)

District (1)	Number (2)	Expenditure (Rs.) (3)
Trivandrum	2	388646
Quilon	3	336460
Alleppey	4	389144
Kottayam	2	197400
Ernakulam	..	..
Trichur	4	767900
Palghat	1	72182
Malapuram	..	..
Calicut	4	276000
Cannanore	4	340361
Total	24	2768093



TABLE 42

## Details of Educational Concessions to Backward Community Students during 1968-69.

Sl. No.	Items	No. of Students benefited					Expenditure incurred (In Rupees)				
		Scheduled Castes	Scheduled Tribes	Other eligible Communities	Other Backward Communities	X'ian Converts	Scheduled Castes	Scheduled Tribes	Other eligible Communities	Other Backward Communities	X'ian Converts
(1)	(2)	(3)	(4)	(5)	(6)	(7)	(8)	(9)	(10)	(11)	(12)
1	Lumpsum grant/ stipend in pre-metric classes	236637	12815	116630			3991432	407625		2003960	
2	Monthly stipend/ Boarding grant in Post metric classes										
(a)	In Arts & Science classes	6043	347	1478	21796	2473	5092458	316479		8664945	
(b)	Technical & Professional Courses	270	13	167	644	79	1349988	52542		1754448	
(c)	Vocational courses viz. I.T.I., Course and Polytechnic Course etc.	1506	64	202	163	395	753518	10304	91787	111845	98190

TABLE 43

## Details of Educational Concessions to Backward Community Students during 1969-1970

1	Lumpsum grant/ Stipend in pre-metric classes	274290	15495		50429	4300396	716002			1521328	
2	Monthly Stipend/ boarding grants in postmetric classes										
(a)	In arts & Science classes	5999	416	1618	25798	3212	5197313	491394	1181521	6398889	4285947
(b)	Technical and Professional Courses	354	7	134	583	127	391193	5533	119324	385874	18897
(c)	Vocational Course viz. I.T.I. course and Polytechnics etc.	1883	20	255	108	602	990085	8854	112447	22254	

TABLE 44

## Expenditure on Harijan Welfare Schemes during the period from 1960-61

Year	Plan (Rs.)	Non-plan (Rs.)	Total
(1)	(2)	(3)	(4)
1960-61	95,98,513	31,31,447	1,27,29,960
1961-62	76,17,531	56,29,027	1,35,46,331
1962-63	63,54,623	73,85,354	1,37,43,977
1963-64	64,53,433	66,54,314	1,51,07,747
1964-65	38,03,229	1,39,17,151	1,77,20,380
1965-66	39,29,863	1,45,48,570	1,84,78,433
1966-67	19,91,878	1,81,13,667	2,01,05,545
1967-68	33,01,033	2,91,74,402	3,24,75,435
1968-69	43,01,914	2,96,28,034	3,39,29,948
1969-70	25,36,966	3,59,02,222	3,84,39,188
1970-71	51,12,946	3,41,49,433	3,92,62,379
1971-72	48,05,300	3,85,30,700	4,33,36,000

\* Provisional

