

87 no. 1411

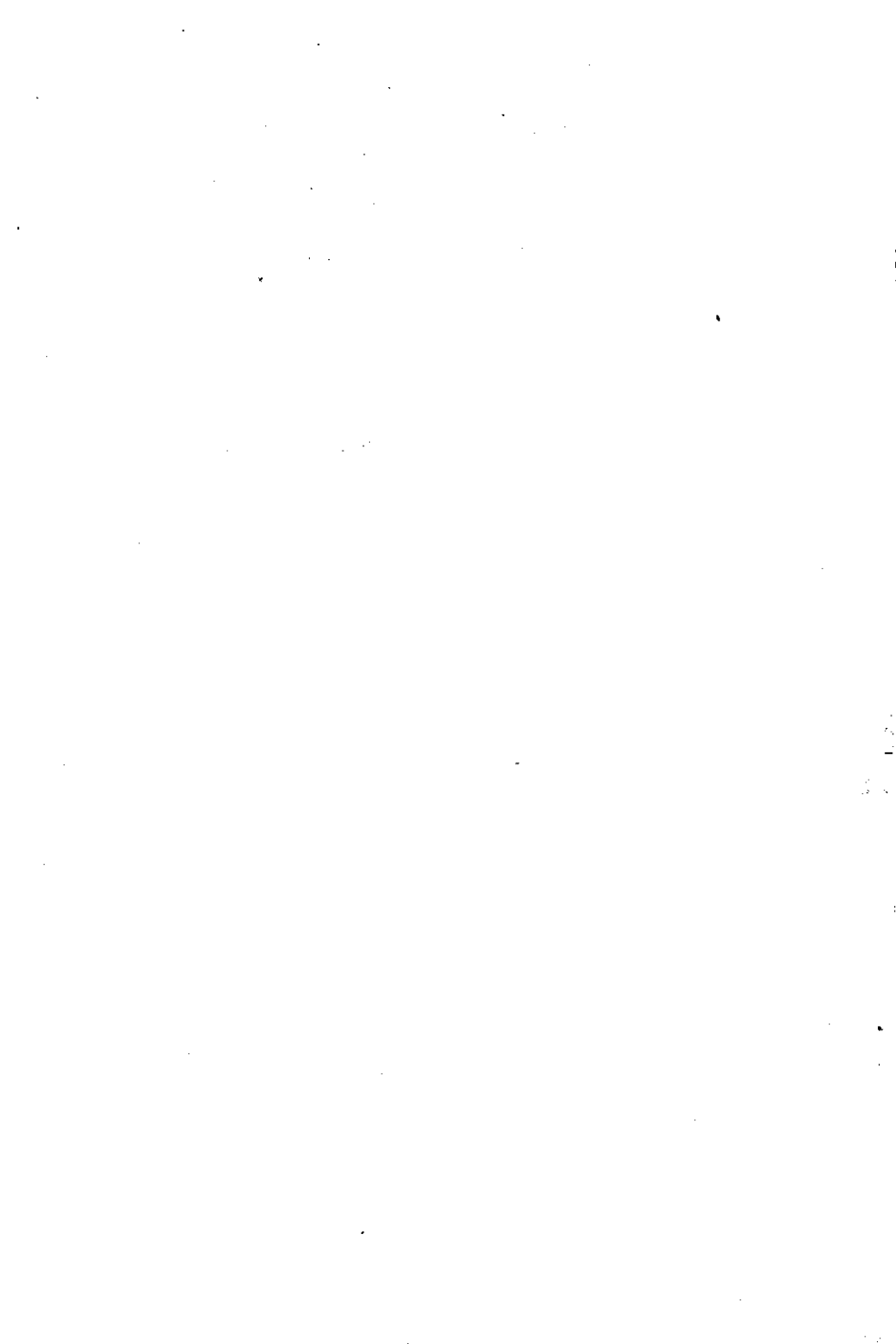


GOVERNMENT OF KERALA

# ANNUAL SURVEY OF INDUSTRIES

1983-84

DEPARTMENT OF ECONOMICS & STATISTICS  
Triyandrum



**REPORT**  
**ON**  
**ANNUAL SURVEY OF INDUSTRIES**  
**1983-84**

**KERALA STATE**

**DEPARTMENT OF**  
**ECONOMICS AND STATISTICS,**  
**TRIVANDRUM**

**NOVEMBER, 1988**



## PREFACE

This report relating to Annual Survey of Industries 1983-84 is the eighteenth publication in the series. It presents a broad picture of the pattern and growth of the registered factory sector of Kerala.

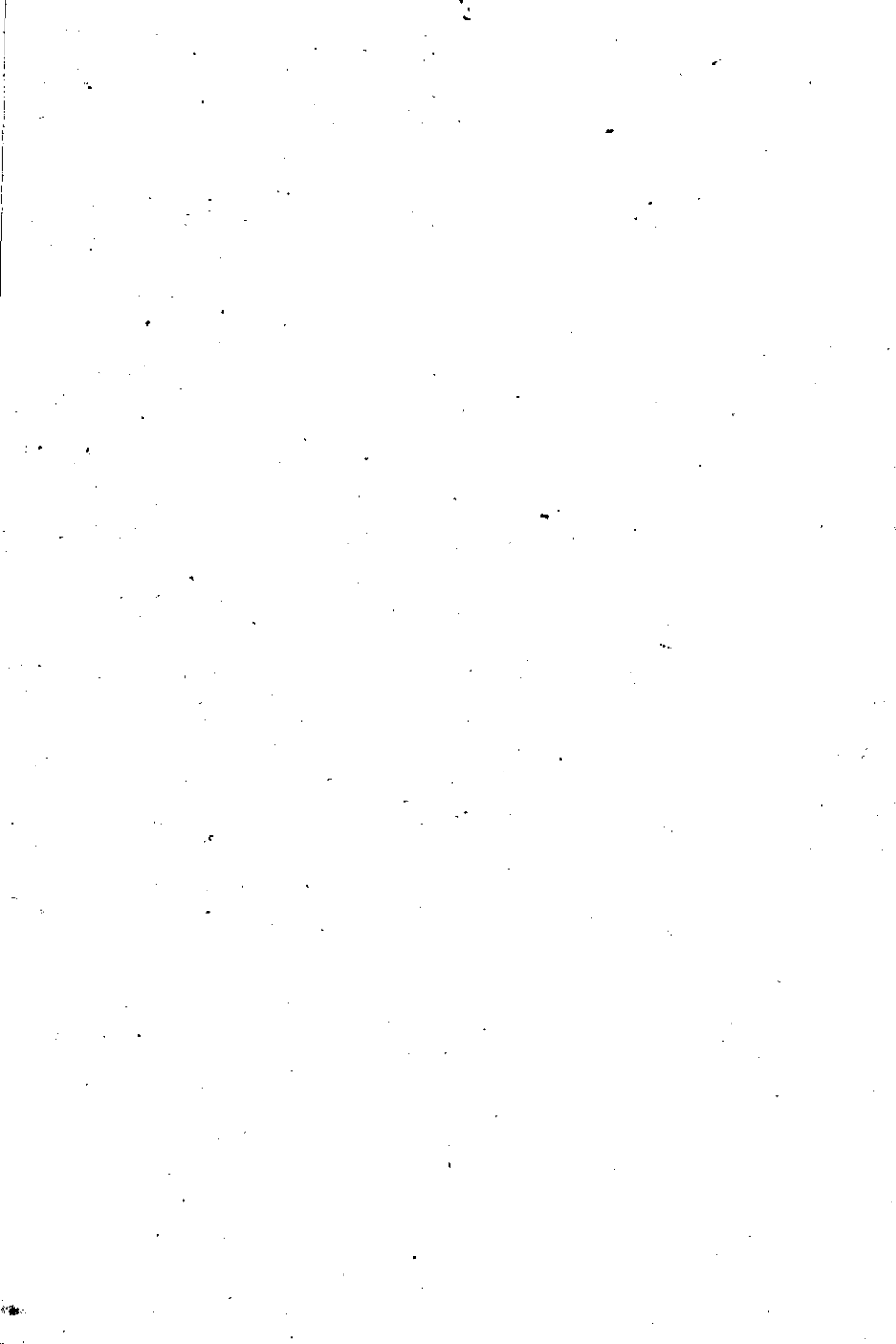
The report contains four chapters. The first one deals with the coverage concepts definitions etc. of the survey. The second chapter provides a review of the results. The third gives an analysis of the major structural characteristics and the fourth deals with the relative importance of different industries.

The report was prepared by Shri M. Velayudhan, Assistant Director with the aid of the staff of the Industrial Statistical Unit of the Department of Economics and Statistics. The work done by Shri G. Sudhakaran Nair, Shri P. T. Ayyappan and Shri K. Raveendran in this regard is especially acknowledged.

Suggestions if any for improvement of the report are welcome.

K. BALAKRISHNAN NAIR,

*Director of Economics and Statistics.*



## CONTENTS

### CHAPTER I

#### General

Page

1.1 Introduction	..	1
1.2 Scope and coverage	..	1
1.3 Concepts and definitions	..	2
1.4 Summary results of the survey	..	6

### CHAPTER II

#### Review of Results of the Survey

2.1 Salient features	..	8
2.2 Selected aggregates by Principal economic activity	..	9

### CHAPTER III

#### Analysis of major Structural Characteristics—All Industries

3.1 Number of Units	..	11
3.2 Fixed Capital	..	13
3.3 Working Capital	..	16
3.4 Productive Capital	..	18
3.5 Invested Capital	..	21
3.6 Outstanding loans	..	24
3.7 Workers	..	26
3.8 Employment	..	28
3.9 Wages to workers	..	30
3.10 Emoluments	..	32
3.11 Input	..	35
3.12 Output	..	38
3.13 Net value added	..	40

### CHAPTER IV

Relative Importance of different Industries	..	42
---	----	----

Appendix





## CHAPTER I

### GENERAL

#### 1.1 Introduction

The Annual Survey of Industries is the primary source of data on registered industries in the State. It provides valuable data on various aspects of the registered industrial sector covering economic activities relating to manufacturing, electricity, gas, water supply and repair services. The survey is conducted every year under the statutory provisions of the Collection of Statistics Act, 1953, and the rules framed thereunder in 1959. The field work of the survey is being carried out by the Field-Operation Division of the National Sample Survey Organization, Government of India. The Director, Field Operation Division (F.O.D), National Sample Survey Organization (N.S.S.O.) is the statistics authority appointed under the above Act for the collection of these statistics.

#### 1.2 Scope and Coverage

The survey covers broadly three types of units. The factories registered under sections 2m (i) and 2m (ii) of the Factories Act, 1948, which are using power and employing 10 or more workers and those not using power but employing 20 or more workers on any day of the preceding 12 months, from the first type. Also this category includes the repair services units incidental to manufacturing activities such as cold storages, repair of foot wear and other leather goods, electrical repair shops and repair of other consumer durable items. The second type comprises electricity undertakings registered with the Central Electricity Authority and various water supply undertakings. The third type includes bidi and cigar establishments which are registered under Bidi and Cigar Workers (Condition of Employment) Act, 1966. Oil storage and distribution units, restaurants and cafes, establishments coming under the control of the Department of Defence Production which are not engaged in the production of any item for sale or exchange and technical training institutes are excluded from the purview of the survey though they may be registered as factories under the Factories Act, 1948.

The unit of enumeration in Annual Survey of Industries is a factory in the case of manufacturing industries, a workshop in the case of repair services, an undertaking in the case of electricity and water supply and an establishment in the case of bidi and cigar industries. The owner of two or more units located in the same State and pertaining to the same industry group is permitted to furnish a single consolidated return.

The frame of the Annual Survey of Industries is revised and updated once in two years. The factories included in the survey are grouped into two sectors viz. census and non-census sectors. Units employing 50 or more workers and using power and those employing 100 or more workers without using power are grouped under the census sector while the remaining units constitute the non-census sector. This classification is done on the basis of employment figures of the previous years' returns. Once a unit is classified under the census or the non-census sector; its status is not altered for a period of two years i.e. till the frame is revised.

All the units in the census sector, all electricity undertakings and units in specified categories of the non-census sector have been covered in this survey on a complete enumeration basis. The units from the non-census sector which are completely enumerated belong to—

- (i) those industries where the total number of units do not exceed 50 at the all India level.
- (ii) Units located in relatively less industrialised States.

The sampling units are listed in descending order of employment. Having thus arranged and serially numbered the non-census sampling units in a stratum, units with odd serial numbers are surveyed during the first year after the revision of the frame and those with even numbers during the next year.

Reference period for Annual Survey of Industries 1983-84 was the financial year commencing on 1st April 1983 (i.e. 1st April 1983 to 31st March 1984).

*Limitations.*—The data presented in this report relates to the factories responded to the survey only. The factories which did not respond constituted only a negligible proportion (4 per cent) of the total number of factories.

### 1.3 Concepts and definitions

Reference year for A.S.I. 1983-84 is the accounting year of the factory ending on any day during the fiscal year 1983-84 i.e. 1st April 1983 to 31st March 1984.

*Registered factory.*—Is one which is registered under sections 2m (i) and 2m (ii) of the Factories Act, 1948. The sections 2m (i) and 2m (ii) refer to any premises including the *precincts* thereof (i) whereon ten or more workers are working, or were working on any day of the preceding twelve months, and in any part of which a manufacturing process is being carried on with the aid of power or is ordinarily so carried on or (ii) whereon twenty or more workers are working or were working on any day of the preceding twelve months, and in any part of which a manufacturing process is being carried on without the aid of power, or is ordinarily so carried on.

3

**Gross value of plant and Machinery.**—represents the total original (un-depreciated) value of the installed plant and machinery as at the end of the accounting year. It includes the book value of own-constructed plants and machinery if installed, and the approximate value of rented in plants and machinery as at the time of renting in but excludes the value of rented-out plants and machinery. Total value of all the plants and machinery acquired on hire purchase basis is also included.

**Fixed Capital.**—represents the depreciated value of fixed assets owned by the factory on the closing day of the accounting year. Fixed assets are those which have normal productive life of more than one year. Fixed capital covers all types of assets, new or used or own constructed, deployer for production, transportation, living or recreational facilities, hospitals, schools, etc., for factory personnel. It includes the fixed assets of the head office allocable to the factory and also the full value of assets taken on hire purchase basis (whether fully paid or not) excluding interest element. It excludes intangible assets and assets solely used for post manufacturing activities such as sale, storage, distribution, etc.

**Physical working Capital.**—defined to include all physical inventories owned, held or controlled by the factory as on the closing day of the accounting year such as materials, fuels and lubricants, stores etc., that enter into products manufactured by the factory itself or supplied by the factory to others for processing. Physical working capital also includes the stock of materials, fuels and stores, etc., purchased expressly for resale, semi-finished goods and work in progress on account of others and goods made by the factory which are ready for sale at the end of the accounting year. However it do is not include the stock of the materials, fuels, stores, etc., supplied by others to the factory for precessing. Finished goods processed by others from raw materials supplied by the factory and held by them are included and finished goods processed by the factory from raw materials, supplied by others, are excluded.

**Working Capital.**—is the sum total of the physical working capital as already defined above and the cash deposits in hand and at bank and the net balance of amounts receivable over amounts payable at the end of the accounting year. Working capital, however, excludes unused overdraft facility, fixed deposits irrespective of duration, advances for acquisition of fixed assets, long-term loans including interest thereon and investment.

**Productive Capital.**—is the total of fixed capital and working capital.

**Invested Capital.**—is the total of fixed capital and Physical working capital.

**Depreciation.**—is consumption of fixed capital by the factory due to wear and tear and obsolescence during the accounting year and is taken as provided by the factory owner or is estimated on the basis of cost of installation and working life of the fixed assets.

**Outstanding loans.**—represent all loans, whether short term or long term, whether interest bearing or not, outstanding according to the books of the factory as on the closing day of accounting year.

**Workers.**—are defined to include all persons employed directly or through any agency whether for wages or not and engaged in any manufacturing process or in cleaning any part of the machinery or premises used for manufacturing process or in any other kind of work incidental to or connected with the manufacturing process or the subject of the manufacturing process. Labour engaged in the repair and maintenance or production of fixed assets for factory's own use or labour employed for generating electricity or producing coal/gas are included. However persons holding positions of supervision or management, or employed in administrative office, store keeping section and welfare section, watch and ward staff, sales department staff and those engaged in the purchase of raw materials etc., and in production of the fixed assets for the factory are excluded.

**Employees.**—relate to all persons engaged by the factory whether for wages or not, in work connected directly or indirectly with the manufacturing process and include all administrative, technical, clerical staff as also labour engaged in production of capital assets for factory's own use. This is inclusive of persons holding position of supervision or management or engaged in administrative office, store keeping section and welfare section, watch and ward staff, sales department as also those engaged in the purchase of raw materials etc., and the production of fixed assets for the factory. It also include all working proprietors and their family members who are actively engaged in the work of the factory even without any pay and the unpaid members of the co-operative societies who worked in or for the factory in any direct and productive capacity.

The average number of workers/employees is obtained by dividing mandays worked (defined below) by the number of days on which the manufacturing process was carried on during the reference year. In case of factories where only repair/maintenance of construction activity was carried on, the average is calculated by dividing the mandays worked by the number of days of repair and maintenance of construction work.

**Mandays worked.**—represent the total number of mandays worked and not mandays paid for by the factory during the accounting year. It is obtained by summing up the number of persons of specified categories attending in each shift over all the shifts worked on all days (working and non-working).

**Wages.**—are defined to include all remuneration capable of being expressed in monetary terms and also payable more or less regularly in each pay period to workers (defined above) as compensation for work done during the accounting year. It includes (a) direct wages and salary (i. e. basic wages/salaries, payment of overtime, dearness, compensatory, house rent and other allowances), (b) remuneration for period not worked (i.e. basic wages, salaries

and allowances payable for leave period, paid holidays, lay off payments and compensation for unemployment, if not paid from sources other than employers), (c) bonuses and exgratia payment paid both at regular and less frequent intervals (i. e. incentive bonuses, good attendance bonuses, productive bonuses, profit sharing bonuses, festival or year end bonuses etc.). It excludes lay off payments which are made from trust or other special funds set up expressly for this purpose i. e. payments not made by the employer. It also excludes imputed value of benefits in kind, employers contribution to old age benefits and other social security charges, direct expenditure on maternity benefits and creches and other group benefits. Travelling and other expenditure incurred for business purposes and reimbursed by the employer are excluded. The wages are expressed in terms of gross value i. e., before deducting fines, damages, taxes, provident fund, employees state insurance contribution etc.,

*Emoluments.*—are defined in the same way as wages defined above but paid to all employees plus imputed value of benefits in kind i.e., the net cost to the employer on those goods and services provided to employees free of charge or at reduced cost which are clearly and primarily of benefit to the employees as consumers.

*Fuels, etc., consumed.*—represent total purchase value of all items of fuels, lubricants, electricity, water etc., consumed by the factory during the accounting year excepting those which directly enter into products as materials consumed. It excludes that part of fuels which is produced and consumed by the factory in manufacture i. e. all intermediate products and also fuels consumed by employees as part of amenities. It includes quantities acquired and consumed from allied concerns, their book value being taken as their purchase value and also the quantities consumed in production of machinery or other capital items for factory's own use.

*Material Consumed.*—represent the total delivered value of all items of raw materials, components, chemicals, packing materials and stores which actually entered into the production process of the factory during the accounting year. Also include the cost of all materials used in the production of fixed assets including construction work for factory's own use. It however, excludes all intermediate products consumed during the accounting year (Intermediate products in the above context mean all those products which are produced by the factory but are subject to further manufacturing process).

*Total Inputs.*—Comprises gross value of fuels, materials etc., consumed (as defined above) and also other inputs viz. (a) cost of non-industrial services received from others, (b) cost of materials consumed for repair and maintenance of factory's fixed assets including cost of work done by others to the factory's fixed assets, (c) cost of contract and commission-work done by others on materials supplied by the factory, (d) cost of office supplies and products reported for sale during last year and used for further manufacture during the accounting year and (e) purchase value of goods sold in the same condition as purchased.

**Products.**—are defined to include the ex-factory value (i. e. exclusive of taxes, duties etc., on sale and inclusive of subsidies etc., if any) of all product and by-products excluding intermediate products that have been completed during the accounting year for sale whether actually sold during accounting year or entered into books. Also include fixed assets produced by the factory for its own use.

**Semi-finished goods including in progress.**—refer to the imputed value of all materials which have been partially processed by the factory but which are not usually sold without further processing. It includes the work in progress on account of others, but excludes the value of semi-finished fixed assets produced for factory's own use.

**Gross Output.**—is defined to include the ex-factory value of products and by-products manufactured during the accounting year. It also includes the net value of the semi-finished goods completed or work in progress and also the receipts for industrial and non-industrial services rendered to others value of semi-finished goods of last year sold in current year and sale value of goods sold in the same condition as purchased. The terms gross output, value of output and total output have been used in the text interchangeably to mean the same thing.

**Net value added.**—is the increment to the value of goods and services that is contributed by the factory and is obtained by deducting the value of total inputs and depreciation from value of output.

**Factor payments.**—represent the share in value added of income from capital and is the sum total of rent as interests and defined below.

**Rent.**—represents the amount of royalty paid in the nature of rent for use of the fixed assets in the factory.

**Interest.**—includes all interest paid on factory account on loans, whether short term or long term, irrespective of the duration and the nature of agency from which the loan was taken.

**Net income.**—represents the factor shares of employees and entrepreneur in the value added and is obtained by deducting the factor payments (as defined above) from the value added.

#### 1.4. Summary results of the survey

The Annual Survey of Industries for 1983-84 shows that the Registered factory sector of Industry has made an over all development during the year. Notable improvements have been made in the fields of Investments and Product n. But there is a set back in employment.

About 3097 factories responded to the Survey. The total Investment during the year in these factories is Rs. 1776.77 crores of which Rs. 1206.05 crores are in the fixed capital. The output and input are Rs. 2342.79 crores and Rs. 1743.76 crores respectively. The value added by manufacture is Rs. 520.98 crores while the employment provided is 240803 and the emoluments paid to the employees are Rs. 222.08 crores.

## CHAPTER II

### REVIEW OF THE RESULTS OF THE SURVEY

#### 2.1. Salient features

The Principal Characteristics of the registered Factory Sector of Industries in the State as a whole as revealed by the Survey are detailed in this chapter, together with the main features of the other three sectors of Economic activity viz. 'Manufacturing, Electricity and Water Supply' and 'Other repair Services'.

The Principal aggregates of the registered factory sector at the State level for the year 1983-84 as compared to the year 1982-83 are given below in Table 1.

TABLE—I  
Salient Features

Sl. No.	Aggregates	Unit	Year		% increase in 1983-84 over 1982-83
			1982-83	1983-84	
(1)	(2)	(3)	(4)	(5)	(6)
1	Factories	Nos.	3045	3097	+1.71
2	Fixed Capital	Rs. in lakhs	108685.17	120604.68	+10.97
3	Working Capital	"	38243.31	51502.38	+34.67
4	Productive Capital	"	146928.48	172107.06	+17.14
5	Invested Capital	"	170338.04	177676.88	+4.31
6	Outstanding loan	"	124783.49	148167.60	+18.74
7	Employees	Nos.	266965	240803	-9.79
8	Emoluments	Rs. in lakhs	19915.10	22208.03	+11.51
9	Input	"	194129.41	174375.61	-10.18
10	Output	"	248425.07	234279.22	-5.69
11	Value added	"	48117.16	52097.60	+8.27
12	Factor payments	"	11986.35	10808.72	-9.82
13	Net Income	"	36130.81	41288.88	+14.28

The above table gives an impressive picture of the development made in the organised Registered industrial sector of the economy of the State during the year 1983-84. The number of factories responding when compared to the previous year has made an increase of 1.71 per cent raising the number of units from 3045 to 3097. Progress is also seen in the fixed capital investment in the sector. The fixed capital has gone upto Rs. 120605 lakhs from



Rs. 108685 lakhs recording an increase of 10.97 %. The working capital has gone up by 34.67 per cent raising the amount from Rs. 38243 lakhs to Rs. 51502 lakhs. The productive Capital has made an increase from Rs. 146928 lakhs to Rs. 172107 lakhs recording an increase by 17.14%. The invested capital has gone up by 4.31% raising the amount from Rs. 170338 lakhs to Rs. 177677 lakhs. The outstanding loans have made a rise from Rs. 124783 lakhs to Rs. 148168 lakhs recording an increase of 18.74%.

The number of employees has decreased by 9.79 per cent. The employment figure in this sector during 1982-83 was 266965. During the year 1983-84 it is 240803. Even though the invested capital has made a rise the employment is seen decreased thereby indicating the growing trend of the sector to become more capital intensive. The total emoluments of the Employees has gone up by 11.51%. The emoluments have gone up from Rs. 19915 lakhs to Rs. 22208 lakhs while the Share of Employees in the value added has gone up from 41.39% to 42.63% which is a healthy symptom in so far as it goes to raise the standard of living of the employees in this sector. The total input of the sector has decreased from Rs. 194129 lakhs to Rs. 174376 lakhs, and output from Rs. 248425 lakhs to Rs. 234279 lakhs recording a decrease of 10.18 % and 5.69% respectively. The net value added has gone upto Rs. 52098 lakhs from Rs. 48117 lakhs recording an increase of 8.27%. The factor payments have decreased from Rs. 11986 lakhs to Rs. 10809 lakhs recording a decrease of 9.82 %. The net income has gone upto Rs. 41289 crores from Rs. 36131 lakhs recording an increase of 14.28%.

## 2.2. Selected aggregates by principal economic activity

The relative shares of some of the selected aggregates by the three Broad divisions of economic activity viz. (i) Manufacturing, (ii) Electricity and Water Supply and (iii) Repair Services are presented in Table 2 below:

TABLE-2

### Selected Aggregates by Principal Economic Activity

Sl. No.	Item	Unit	Industries			
			Manufacturing	Electricity and Water Supply	Repair services	All Industries
(1)	(2)	(3)	(4)	(5)	(6)	(7)
1	Factories	No.	2988 (96.48)	14 (0.45)	95 (3.07)	3097 (100)
2	Fixed Capital	Rs. in lakhs	76229.37 (63.20)	43990.73 (36.48)	384.58 (0.32)	120604.68 (100)

(1)	(2)	(3)	(4)	(5)	(6)	(7)
3	Working Capital	Rs. in lakhs	95989.42 (69.89)	15359.44 (29.82)	153.52 (0.29)	51502.38 (100)
4	productive Capital	"	111218.80 (64.63)	60350.16 (35.06)	538.10 (0.31)	172107.05 (100)
5	Employees	No.	209646 (87.06)	24115 (10.02)	7042 (2.92)	240803 (100)
6	Total Emoluments	Rs. in lakhs	17854.41 (80.39)	3334.01 (15.02)	1019.61 (4.59)	22208.03 (100)
7	Total Input	"	170813.34 (97.95)	3285.49 (1.89)	276.78 (0.16)	174375.61 (100)
8	Total Output	"	222278.62 (94.88)	10681.84 (4.56)	1318.76 (0.56)	234279.22 (100)
9	Value added	"	45041.42 (86.46)	6046.94 (11.60)	1009.24 (1.94)	52097.60 (100)

(Figures given in Brackets are percentages)

The above Table shows that about 96.48 per cent of the total factories covered in the survey belonged to the manufacturing sector as against 96.06 per cent during the previous year. Of the remaining 3.52 per cent, 3.07 per cent belonged to Repair Services against 3.55 per cent in the previous year. This indicates that the manufacturing sector has more progress in the case of number of factories while the other two divisions have made a regression and a drift from the trend set in during the last year. But, Electricity and Water Supply undertakings accounted for 36.48 per cent of the total fixed capital though their number is very few.

CHAPTER III

ANALYSIS OF MAJOR STRUCTURAL CHARACTERISTICS—  
ALL INDUSTRIES

The factories surveyed during the year under Report are classified under major industrial groups at 3 digit level of the National Industrial Classification Codes 1970 and their important structural characteristics are presented in this chapter.

3.1. No. of Units

The details of Industries having 20 Units and more and the number of census Units in each of the Major industrial groups as given in Table 3.

TABLE—3

Arrangements of Industries According to No. of Units

<i>Sl. No.</i>	<i>Code</i>	<i>Name of Industry</i>	<i>No. of Units</i>	<i>Census Sector units</i>	<i>Percentage to total</i>
(1)	(2)	(3)	(4)	(5)	(6)
1	271	Sawing and planing of Wood (other than plywood)	533	21	17.21
2	226	Manufacture of Bidi	319	31	10.30
3	320	Manufacture of structural clay products	286	58	9.23
4	214	Cashewnut processing	263	213	8.49
5	302	Manufacture of rubber products not elsewhere classified	133	17	4.29
6	235	Weaving and finishing of cotton textiles in handlooms other than khadi	106	22	3.42
7	973	Repair of motor vehicles and motor cycles	89	37	2.87

(1)	(2)	(3)	(4)	(5)	(6)
8	212	Tea processing	89	53	2.87
9	268	Manufacture of coir and coir products	85	19	2.74
10	270	Manufacture of veneer, plywood and their products	76	16	2.45
11	285	Printing and publishing of periodicals, Books etc.	57	11	1.84
12	203	Canning and processing of fish	56	14	1.81
13	340	Manufacture of fabricated metal products	54	4	1.74
14	204	Grain mill products	49	3	1.58
15	313	Manufacture of drugs and medicines	43	6	1.39
16	310	Manufacture of Basic and industrial organic and inorganic chemicals	34	10	1.11
17	289	Printing, publishing and allied activities not elsewhere classified	33	5	1.08
18	211	Manufacture of other edible oils and Fats	33	3	1.08
19	341	Manufacture of structural metal products	32	6	1.03
20	343	Manufacture of Hand tools and general hardware	32	8	1.03
21	359	Manufacture and repair of non-electrical machinery	27	1	0.87
22	231	Cotton spinning and weaving in mill	26	26	0.85
23	202	Canning and preservation of fruits and vegetables	23	5	0.74
24	284	Printing and publishing of newspapers	23	13	0.74
25	236	Weaving and finishing of cotton textiles in power looms	23	9	0.74
26	357	Manufacture of machine tools, their parts and accessories	23	3	0.74
27	311	Manufacture of fertilizers and pesticides	22	3	0.71
28	276	Manufacture of wooden furniture and fixtures	21	5	0.68
		Other Industries	507	127	16.37
All Industries			3097	749	100

The above table shows that Sawing and Planing of Wood (other than plywood) tops the list in the case of number of Units registered and responded, followed by Manufacture of Beedi, Manufacture of structural clay products, Cashewnut Processing Manufacture of Rubber products and weaving and finishing of Cotton Textiles. These Industries held the first six ranks in the previous year also. The fact that about 53% of the total Units come under these six groups of Industries shows their relative importance in the Industrial Structural of the State and its Economy. There are 28 industries in the State having 20 or more units as against 23 in 1982-83.

### 3.2. Fixed Capital

The fixed capital investment during the year under report is estimated as Rs. 1206.05 crores as against Rs. 1086.86 crores in the previous year. Distribution of Fixed Capital under different items of investment is given below in Table 4:

TABLE-4

#### Distribution of fixed capital—All Industries

Sl. No.	Item	1983-84	
		Amount Rs. in lakhs	Percentage to total
(1)	(2)	(3)	(4)
1	Land	3101.20	2.57
2	Improvement to Land	5144.71	4.27
3	Building	14507.18	12.03
4	Plant & Machinery	42716.14	35.42
5	Transport Equipments	1372.53	1.13
6	Tools and other Fixed Assets	25412.18	21.07
7	Assets under Construction	28350.74	23.51
	Total	120604.68	100.00

The above Table shows that about 35.42 per cent of the total fixed Capital Investment is in Plant and Machinery. While 21.07 per cent is in Tools and other Fixed Assets. The investment in Building and other Assets under construction is 35.54 per cent. The investment under other items including land is 7.97 per cent of the total Fixed Capital.

The fixed capital investment is highest in "Generation and Transmission of Electric Energy" which is more capital intensive. The investment under this group is Rs. 43373 lakhs. This Constitutes 36.96 per cent of the Total fixed Capital investment. The manufacture of Pulp, Paper and Paper Board comes next with an investment of Rs. 14447 lakhs, which forms 11.98 per cent of the Total Capital Investment. The Manufacture of Petroleum Products not elsewhere classified (Petroleum refineries) is ranked third with an investment of Rs. 13730 lakhs. About 11.38 per cent of the Fixed Capital Investment is in this industry. These three group of Industries Share 59.32 per cent of the Total Fixed Capital Investment. But these industries have only 1.06 per cent of the Total Units covered by the Survey.

There are 45 groups of Industries with a fixed capital investment of Rs. 2 crores and above. The Industries are arranged in the descending order of fixed capital investment in Table 5 below:

TABLE-5

**Arrangement of Industries according to Fixed Capital**

<i>Sl. No.</i>	<i>Code</i>	<i>Name of Industry</i>	<i>Fixed Capital (in lakhs)</i>	<i>Percentage to total</i>
(1)	(2)	(3)	(4)	(5)
1	400.	Generation and transmission of electric energy	43373.00	35.96
2	280.	Manufacture of pulp, paper and paper board	14446.94	11.98
3	304.	Petroleum refineries	13730.25	11.38
4	370.	Ship building and repairing	9029.84	7.49
5	311.	Manufacture of fertilizers and pesticides	7558.54	6.36
6	231.	Cotton spinning, weaving, shrinking and finishing of cotton textiles	3986.33	3.31
7	310.	Manufacture of basic & industrial organic & inorganic chemicals	3213.01	2.66
8	300.	Tyre and Tube industries	2021.01	1.67
9	367.	Manufacture of electronic components and accessories not elsewhere classified	1303.62	1.08
10	360.	Manufacture of electrical industrial machinery and apparatus	1254.55	1.04
11	357.	Manufacture of machine tools	1195.18	0.99

(1)	(2)	(3)	(4)	(5)
12	319.	Manufacture of chemical products not elsewhere classified including photo-chemicals, sensitised films and paper	1177.89	0.98
13	302.	Manufacture of rubber products not elsewhere classified	970.50	0.80
14	212.	Tea processing	865.32	0.72
15	320.	Manufacture of structural clay products	799.69	0.66
16	314.	Manufacture of perfumes, cosmetics, lotions, hair dressing	714.09	0.59
17	366.	Manufacture of electronic computers	711.58	0.59
18	420.	Water Supply	617.73	0.51
19	361.	Manufacture of insulated wires and cables	590.37	0.49
20	284.	Printing and publishing of newspapers	588.51	0.49
21	331.	Foundries for casting and forging iron and steel	521.37	0.43
22	380.	Manufacture of medical, surgical and scientific equipment	498.77	0.41
23	285.	Manufacture of periodicals, books and journals	455.73	0.38
24	203.	Canning and processing of fish	446.46	0.37
25	330.	Iron and Steel Industries	416.21	0.35
26	268.	Manufacture of coir and coir products	390.27	0.33
27	364.	Manufacture of radio and television transmitting and receiving sets etc.	383.89	0.32
28	270.	Manufacture of veneer, plywood and their products	383.62	0.32
29	340.	Manufacture of fabricated metal products	380.51	0.32
30	335.	Aluminium manufacturing	377.82	0.31
31	271.	Sawing and planing of wood (other than plywood)	368.19	0.31
32	973.	Repair of motor vehicles and motorcycles	334.81	0.28
33	336.	Zinc manufacturing	323.79	0.27
34	313.	Manufacturing of drugs and medicines	311.51	0.26

(1)	(2)	(3)	(4)	(5)
35	375.	Manufacture of motorcycles and scooters and parts	304.34	0.25
36	289.	Printing publishing and allied activities not elsewhere classified	277.81	0.23
37	363.	Manufacture of electrical apparatus	277.64	0.23
38	341.	Manufacture of structural metal products	271.05	0.22
39	214.	Cashewnut processing	268.06	0.22
40	247.	Spinning, weaving and finishing of other textiles, synthetic fibres rayons, nylon etc.	266.72	0.22
41	261.	Manufacture of all types of threads	245.92	0.20
42	362.	Manufacture of electrical apparatus	223.64	0.19
43	211.	Manufacture of other edible oils	221.80	0.18
44	290.	Tanning, curing, finishing, embossing and japaning of leather	210.26	0.17
45	329.	Manufacture of miscellaneous non-metallic mineral products	205.83	0.17
46		Others	3991.71	3.31
All Industries			120604.68	100.00

### 3.3 Working Capital

The working capital employed in the Registered sector of factories during 1983-84 is estimated as Rs. 515 crores as against Rs. 382 crores during the previous year. The working capital utilisation is the highest in "Generation and Transmission of Electric Energy" with 29.80 per cent followed by Manufacture of fertilizers and pesticides with 9.45 per cent. There are 37 groups of industries having working capital utilisation of Rs. 2 crores and above during the year under report as against 20 groups during the previous year. Of these groups of Industries 12 groups have less than 1% share of the total working capital. The Industries are arranged in descending order of working capital employed in table 6 below:



TABLE—6

**Arrangements of Industries according to Working Capital**

<i>Sl. No.</i>	<i>Code</i>	<i>Name of Industries</i>	<i>Working Capital (in lakhs)</i>	<i>Percentage to total</i>
(1)	(2)	(3)	(4)	(5)
1	400.	Generation and transmission of electric energy	15350.18	29.80
2	311.	Manufacture of fertilizers and pesticides	4869.52	9.45
3	304.	Petroleum Refineries	2967.96	5.76
4	310.	Manufacture of basic and industrial organic and inorganic chemicals	2423.87	4.71
5	300.	Tyre and Tube industries	1706.37	3.31
6	214.	Cashewnut processing	1689.95	3.24
7	364.	Manufacture of radio and television transmitting and receiving sets etc.	1492.89	2.90
8	268.	Manufacture of coir and coir products	1409.82	2.74
9	370.	Ship building and repairing	1267.99	2.46
10	357.	Manufacture of machine tools, their parts and accessories	1174.27	2.25
11	261.	Manufacture of all types of threads	1027.09	1.99
12	211.	Manufacture of other edible oils	951.83	1.85
13	212.	Tea processing	912.51	1.77
14	302.	Manufacture of rubber products not elsewhere classified	850.48	1.65
15	380.	Manufacture of medical, surgical and scientific equipment	842.51	1.64
16	314.	Manufacture of perfumes, cosmetics, lotions etc.	841.44	1.63
17	335.	Aluminium manufacturing	814.77	1.58
18	367.	Manufacture of electronic components and accessories	812.93	1.58
19	280.	Manufacture of pulp, paper and paper board	784.94	1.52
20	340.	Manufacture of fabricated metal products	698.43	1.36
21	231.	Cotton, spinning, weaving, shrinking and finishing of cotton textiles	675.13	1.32

<i>Sl. Code No.</i>	<i>Name of Industries</i>	<i>Working Capital (in lakhs)</i>	<i>Percentage to total</i>
(1) (2)	(3)	(4)	(5)
22 270.	Manufacture of veneer, plywood and their products	634.27	1.23
23 361.	Manufacture of insulated wires and cables	580.11	1.13
24 284.	Printing and publishing of news papers	546.30	1.06
25 271.	Sawing and planing of wood (other than plywood)	514.48	1.00
26 320.	Manufacture of structural clay products	505.55	0.98
27 341.	Manufacture of structural metal products	389.88	0.76
28 216.	Manufacture of prepared animal feeds	345.62	0.67
29 219.	Manufacture of food products not elsewhere classified	311.99	0.61
30 336.	Zinc manufacturing	304.21	0.59
31 235.	Weaving and finishing of cotton textiles in handlooms other than khadi	278.74	0.54
32 329.	Manufacture of miscellaneous non-metallic mineral products	273.03	0.53
33 206.	Manufacture and refining of sugar	270.91	0.53
34 285.	Manufacture of periodicals, books and journals	269.20	0.52
35 313.	Manufacture of drugs and medicines	223.83	0.44
36 374.	Manufacture of motor vehicles and parts	221.52	0.43
37 324.	Manufacture of cement, lime and plaster	216.80	0.42
	Other Industries	2050.96	3.98
	All Industries	51502.38	100.00

### 3.4 Productive Capital

The total productive capital utilized by the factory sector during the year under report is estimated as Rs. 1721 crores as against Rs. 1469 crores during the previous year. There are 47 groups of Industries with a productive capital investment of Rs. 3 crores or more during 1983-84 as against 23 during the year 1982-83. Generation and transmission of Electric Energy, Petroleum refineries, manufacture of pulp, paper and paper board, manufacture of fertilizers and pesticides, ship building and repairing organic and inorganic

chemicals and gases, cotton spinning and weaving in mills and Tyre and Tube Industries shared 74.11 per cent of the total productive capital Investment. The Industries with productive capital of Rs. 2 crores or more are arranged in descending order of magnitude in Table 7 below:

TABLE 7

## Arrangement of Industries according to Productive Capital

Sl. No.	Code	Name of Industries	Productive Capital (in lakhs)	Percentage to total
(1)	(2)	(3)	(5)	(6)
1	400.	Generation and Transmission of electric energy	58723.18	34.12
2	304.	Petroleum Refineries	16698.21	9.70
3	280.	Manufacture of pulp, paper and paper board	15231.88	8.85
4	311.	Manufacture of fertilizers and pesticides	12528.06	7.30
5	370.	Ship building and repairing	10297.83	5.98
6	310.	Manufacture of basic industrial organic and inorganic chemicals and gases such as acids, alkalies and their salts, gases like acetylene, oxygen, nitrogen etc.,	5636.89	3.28
7	231.	Cotton spinning and weaving in mill	4661.46	2.71
8	300.	Tyre and Tube Industries	3726.39	2.17
9	357.	Manufacture of machine tools, their parts and accessories	2369.45	1.38
10	367.	Manufacture of electronic components and accessories	2116.54	1.24
11	214.	Cashewnut processing	1958.00	1.15
12	364.	Manufacture of radio and television transmitting and receiving sets etc.	1876.79	1.09
13	302.	Manufacture of rubber products not elsewhere classified	1820.97	1.06
14	268.	Manufacture of coir and coir products	1800.09	1.05
15	212.	Tea processing	1777.83	1.03
16	314.	Manufacture of perfumes, cosmetics lotions hair dressing	1555.53	0.90

(1)	(2)	(3)	(4)	(5)
17	319.	Manufacture of chemical products not elsewhere classified (including photo-chemicals, sensitised films and paper)	1388.56	0.81
18	380.	Manufacture of medical, surgical and scientific equipment	1340.78	0.78
19	320.	Manufacture of structural clay products	1305.24	0.76
20	261.	Manufacture of all types of threads	1273.01	0.74
21	335.	Aluminium manufacturing	1192.59	0.69
22	211.	Manufacture of other edible oils	1173.64	0.68
23	361.	Manufacture of insulated wires and cables	1170.48	0.68
24	284.	Printing and publishing of newspapers	1134.82	0.66
25	340.	Manufacture of fabricated metal products	1078.94	0.63
26	270.	Manufacture of veneer, plywood and their products	1017.89	0.59
27	271.	Sawing and planing of wood (other than plywood)	882.67	0.51
28	366.	Manufacture of electronic computers	767.06	0.45
29	285.	Manufacture of periodicals, books and journals	724.94	0.42
30	360.	Manufacture of electrical, industrial machinery and apparatus	704.30	0.41
31	341.	Manufacture of structural metal products	660.93	0.38
32	336.	Zinc manufacturing	628.00	0.36
33	420.	Water supply	626.98	0.36
34	331.	Foundries for casting forging iron and steel	626.87	0.36
35	330.	Iron and steel industries	586.14	0.34
36	203.	Canning and processing of fish	575.56	0.33
37	313.	Manufacture of drugs and medicines	535.33	0.31
38	216.	Manufacture of prepared animal feeds	492.08	0.29
39	329.	Manufacture of miscellaneous non-metallic mineral products	478.86	0.28
40	973.	Repair of motor vehicles and motor cycles	469.14	0.27
41	235.	Weaving and finishing of cotton textiles in handlooms other than khadi	452.33	0.26
42	375.	Manufacture of motor-cycles and scooters and parts	394.95	0.23

(1)	(2)	(3)	(4)	(5)
43	324.	Manufacture of cement, lime and plaster	382.60	0.22
44	219.	Manufacture of food products not elsewhere classified	367.70	0.21
45	206.	Manufacture and refining of sugar	345.72	0.20
46	362.	Manufacture of electrical apparatus	344.00	0.19
47	289.	Printing publishing allied activities not elsewhere classified	332.99	0.19
48	363.	Manufacture of electrical apparatus	297.74	0.17
49	217.	Manufacture of starch	283.84	0.16
50	247.	Spinning weaving and finishing of other textiles, synthetic fibres, rayons, nylon etc.	268.08	0.16
51	290.	Tanning, curing, finishing embossing and japaing of leather	246.45	0.10
52	236.	Weaving and finishing of cotton textiles in powerlooms	245.80	0.14
53	220.	Distilling, rectifying and blending of spirits	245.79	0.14
54	323.	Manufacture of chinaware and procelainware	245.75	0.14
55	374.	Manufacture of motor vehicles and parts	239.32	0.14
56	222.	Malt liquors and malt	228.77	0.13
57	343.	Manufacture of handtools and general hardware	217.97	0.13
		Others	3353.35	1.95
		All Industries	172107.06	100.00

### 3.5 Invested Capital

The total invested capital in the factory sector is estimated as Rs. 1777 crores during the year under report as against Rs. 1703 crores during the previous year. The invested capital is highest in generation and Transmission of Electric Energy with 29.10 per cent of the total invested capital. The invested capital in Generation and Transmission of Electric Energy, Manufacture of Pulp, paper and Paper Board and Ship building and repairing

formed 46.38 per cent of the total investment Capital during the year. There are 24 groups of Industries with Invested Capital of Rs. 3 crores and above. These Industries are arranged in descending order of magnitude of Invested Capital in Table 8 below.

TABLE 8

**Arrangement of Industries according to invested Capital**

<i>Sl. No.</i>	<i>Code</i>	<i>Name of Industry</i>	<i>Invested Capital (in lakhs)</i>	<i>Percentage to total</i>
(1)	(2)	(3)	(4)	(5)
1	400.	Generation and transmission of electric energy	51695.31	29.10
2	280.	Manufacture of pulp, paper and paper board	16177.09	9.10
3	370.	Ship building and repairing	14533.20	8.18
4	231.	Cotton, spinning and weaving in mill	5949.14	3.34
5	310.	Manufacture of basic and industrial organic and inorganic chemicals	5174.13	2.91
6	214.	Cashewnut processing	4559.22	2.57
7	300.	Tyre and tube industries	3590.92	2.02
8	357.	Manufacture of machine tools, their parts and accessories	2733.06	1.54
9	360.	Manufacture of electrical industrial machinery and apparatus	2370.12	1.33
10	302.	Manufacture of rubber products not elsewhere classified	2044.92	1.15
11	314.	Manufacture of perfumes, cosmetics lotions, hair dressing	1945.96	1.10
12	212.	Tea processing	1874.88	1.06
13	364.	Manufacture of radio and television transmitting and receiving sets etc.	1769.45	1.00
14	367.	Manufacture of electronic components and accessories	1781.20	1.00
15	268.	Manufacture of coir and coir products	1673.61	0.94
16	211.	Manufacture of other edible oils	1441.63	0.81
17	320.	Manufacture of structural clay products	1414.10	0.80

(1)	(2)	(3)	(4)	(5)
18	319.	Manufacture of chemical products not elsewhere classified including photo-chemicals, sensitised films and paper	1345.55	0.76
19	261.	Manufacture of all types of threads	1211.64	0.68
20	335.	Aluminium manufacturing	1169.36	0.66
21	336.	Zinc manufacturing	1152.86	0.65
22	380.	Manufacture of medical, surgical and Scientific equipment	1138.72	0.64
23	366.	Manufacture of electronic computers	1060.32	0.60
24	284.	Printing and publishing of newspapers	986.26	0.56
25	202.	Canning and preservation of fruits and vegetables	941.41	0.53
26	271.	Sawing and planing of wood (other than plywood)	914.74	0.51
27	331.	Foundries for casting and forging iron and steel	808.03	0.45
28	340.	Manufacture of fabricated metal products	786.93	0.44
29	330.	Iron and steel industries	776.03	0.44
30	313.	Manufacture of drugs and medicines	685.66	0.39
31	285.	Manufacture of periodicals, books and journals	667.19	0.38
32	341.	Manufacture of structural metal products	653.36	0.37
33	420.	Water Supply	627.01	0.35
34	206.	Manufacture and refining of sugar	492.03	0.28
35	329.	Manufacture of miscellaneous non metallic mineral products	466.80	0.26
36	973.	Repair of motor vehicles and motor cycles	452.44	0.25
37	219.	Manufacture of food products not elsewhere classified	405.22	0.22
38	361.	Manufacture of insulated wires and cables	402.04	0.22
39	343.	Manufacture of hand tools and general hardware	380.16	0.21
40	247.	Spinning, weaving and finishing of other textiles, synthetic fibres, rayons, nylon etc.	347.08	0.20
41	375.	Manufacture of motor-cycles and scooters and parts	331.93	0.19
42	289.	Printing publishing and allied activities not elsewhere classified	310.97	0.18
		Other Industries	38435.20	21.63
		All Industries	177676.88	100.00

### 3.6 Outstanding Loans

The amount of loans outstanding against the factories covered in the Survey at the end of March, 1984 is Rs. 1482 crores as against Rs.1248 crores during the previous year. It is seen that the dues of Loans in the sector is accumulated year by year and they have exceeded the Capital Investment in the sector. The Loan amount constitutes 122.85 per cent of the fixed Capital and 86.09 per cent of the productive capital. About 76.23 per cent of the total Loan amount is outstanding against 8 Industries viz., Generation and Transmission of Electric Energy, ship building, manufacture of pulp, paper and paper boards, fertilizers and pesticides, tyre and tube Industries, cashewnut processing, cotton spinning and weaving in mill and Petroleum refineries. The highest amount of Loan outstanding is against generation and Transmission of Electric Energy. This industry owes Rs.453 crores as loan. This is 30.58 per cent of the total loan outstanding in the Factory sector and 104.46 per cent of the fixed capital and 77.15 per cent of the productive capital of the Industry. There are 46 groups of Industries with outstanding loan of Rs. 2 crores or more during the year. These Industries are arranged in descending order of magnitude of Loan amount in Table 9 below.

TABLE 9

#### Arrangement of Industries according to outstanding loans

Sl. No.	Code	Name of Industry	Outstanding Loan	Percentage to total
(1)	(2)	(3)	(4)	(5)
1	400.	Generation and transmission of electric energy	45307.60	30.58
2	304.	Petroleum refineries	15907.18	10.74
3	370.	Ship building and repairing	15878.00	10.72
4	280.	Manufacture of pulp, paper and paper board	9600.62	6.48
5	311.	Manufacture of fertilizers and pesticides	8041.16	5.43
6	300.	Tyre and Tube industries	6965.45	4.70
7	214.	Cashewnut processing	6570.34	4.43
8	231.	Cotton, spinning and weaving in mill	4672.20	3.15
9	360.	Manufacture of electrical industrial machinery and apparatus	2641.82	1.78
10	367	Manufacture of electronic components and accessories	2161.59	1.46



(1)	(2)	(3)	(4)	(5)
11	364	Manufacture of radio and television transmitting and receiving sets etc,	2084.93	1.41
12	310	Manufacture of basic and industrial organic and inorganic chemicals	1949.71	1.32
13	361	Manufacture of insulated wires and cables	1763.60	1.19
14	314	Manufacture of perfumes, cosmetics, lotions, hair dressing	1755.29	1.18
15	380	Manufacture of medical, surgical and scientific equipments	1665.37	1.12
16	330	Iron and Steel Industries	1501.59	1.01
17	203	Canning and processing of fish	1180.38	0.80
18	357	Manufacture of machine tools their parts and accessories	1160.70	0.78
19	319	Manufacture of chemical products	1014.59	0.69
20	302	Manufacture of rubber products not elsewhere classified	957.56	0.64
21	268	Manufacture of coir and coir products	926.13	0.63
22	320	Manufacture of structural clay products	850.95	0.57
23	323	Manufacture of chinaware and porcelainware	823.47	0.56
24	331	Foundries for casting and forging iron and steel	765.13	0.52
25	284	Printing and publishing of newspapers	751.95	0.51
26	270	Manufacture of veneer, plywood and their products	731.52	0.49
27	217	Manufacture of starch	610.78	0.41
28	343	Manufacture of hand tools and general hardware	550.90	0.37
29	313	Manufacture of drugs and medicines	480.35	0.32
30	363	Manufacture of electrical apparatus	462.20	0.31
31	366	Manufacture of electronic computers	450.54	0.30
32	341	Manufacture of structural metal products	415.59	0.22
33	220	Distilling, rectifying and blending of spirits	412.35	0.28
34	290	Tanning, curing, finishing embossing, and japing of leather	410.74	0.28
35	271	Sawing and planing of wood (other than plywood)	388.47	0.26

(1)	(2)	(3)	(4)	(5)
36	255	Manufacture of periodicals, books and journals	381.48	0.26
37	235	Weaving and finishing of cotton textiles in handlooms other than khadi	366.35	0.25
38	211	Manufacture of other edible oils	361.41	0.24
39	362	Manufacture of electrical apparatus	359.00	0.24
40	420	Water supply	325.74	0.22
41	236	Weaving and finishing cotton textiles in powerlooms	265.06	0.18
42	315	Manufacture of turpentine	259.01	0.17
43	321	Manufacture of chinaware and porcelainware	231.51	0.16
44	202	Canning and preservation of fruits and vegetables	222.84	0.15
45	247	Spinning, weaving and finishing of other textiles, synthetic fibres, rayons, nylon etc.	214.85	0.15
46	375	Manufacture of motor-cycles and scooters and parts	206.65	0.14
		Other Industries	2859.25	1.94
		All Industries	148167.60	100.00

### 3.7 Workers

The number of workers in the factory sector during the year is estimated as 2.01 lakhs as against 2.15 Lakhs during the previous year. Of these, about 30.99 per cent are engaged in the Cashew processing Units. The number of workers in the Cashew processing units during the year is 62207. But, the number of workers employed in the Cashew processing Units is seen decreased in actual number and percentage to total workers in the factory sector. During the previous year the number of workers engaged in the Cashewnut processing Units were 71576 and their percentage to total workers was 33.49. This trend is seen in the total number employed in the Factory sector also. It can also be seen that about 56.62 per cent of the workers in the factory sector are engaged in the Traditional Industries of Cashew processing, Beed manufacturing, Structural clay products, Cotton Spinning and Weaving, Shrinking of cotton Textiles, Sawing and Planing of Wood,

and Tea Processing. There are 26 groups of Industries having more than 1000 workers in each of them. These industries are arranged in descending order of magnitude in Table 10 below:

TABLE 10

**Arrangement of Industries According to number of Workers**

<i>Sl. No.</i>	<i>Code</i>	<i>Name of Industry</i>	<i>Number of workers</i>	<i>Percentage to total</i>
(1)	(2)	(3)	(4)	(5)
1	214	Cashewnut processing	62207	30.99
2	226	Manufacture of beedi	17630	8.75
3	400	Generation and transmission of electric energy	14541	7.24
4	231	Cotton, spinning and weaving in mill	11181	5.57
5	320	Manufacture of structural clay products	10872	5.42
6	271	Sawing and planing of wood (other than plywood)	7244	3.61
7	973	Repair of motor vehicles and motor cycles	4954	2.47
8	212	Tea processing	4570	2.28
9	311	Manufacture of fertilizers and pesticides	4541	2.26
10	235	Weaving and finishing of cotton textiles in handlooms other than khadi	4518	2.25
11	302	Manufacture of rubber products not elsewhere classified	3760	1.87
12	310	Manufacture of basic and industrial organic and inorganic chemicals	3185	1.59
13	270	Manufacture of veneer, plywood and their products	3011	1.50
14	285	Manufacture of periodicals, books and journals	2759	1.37
15	280	Manufacture of pulp, paper and paper board	1513	1.25

(1)	(2)	(3)	(4)	(5)
16	370	Ship building and repairing	2314	1.15
17	268	Manufacture of coir and coir products	2309	1.15
18	357	Manufacture of machine tools their parts and accessories	2073	1.03
19	360	Manufacture of electrical industrial machinery and apparatus	1942	0.97
20	261	Manufacture of all types of threads	1791	0.89
21	203	Canning and processing of fish	1746	0.87
22	300	Tyre and tube industries	1744	0.87
23	314	Manufacture of perfumes, cosmetics lotions, hair dressing	1697	0.85
24	313	Manufacture of drugs and medicines	1294	0.64
25	284	Printing and publishing of newspapers	1222	0.61
26	374	Manufacture of Motor vehicles and parts	1065	0.53
		Other Industries	24074	11.99
		All Industries	200757	100.00

### 3.8 Employment

The total employment provided by the factory sector during 1983-84 is 2.40 Lakhs as against 2.67 Lakhs in 1982-83. The number of employees is highest in the Cashew processing Industry, which is Labour intensive. But, compared to the previous year a decrease in the number of employees and their percentage to total employment in the Factory Sector is noticed in this Industry during the year 1983-84. During the year, the employment in the cashew industry is 67397 which is 27.99% of the total employment. It was 81215 during the year 1982-83 and its percentage to total employees was 30.42. This trend is seen in the whole factory sector also. Kerala State Electricity Board is the single largest employer. It engaged about 9.92 per cent of the total employees in the Factory sector.

TABLE 11

**Arrangement of Industries According to Number of Employees**

<i>Sl. No.</i>	<i>Code</i>	<i>Name of Industry</i>	<i>No. of employees</i>	<i>Percentage to total</i>
(1)	(2)	(3)	(4)	(5)
1	214	Cashewnut processing	67397	27.99
2	400	Generation and transmission of electric energy	23887	9.92
3	226	Manufacture of beedi	17858	7.42
4	231	Cotton, spinning and weaving in mill	12520	5.20
5	320	Manufacture of structural clay products	11894	4.94
6	271	Sawing and planing of wood (other than plywood)	7980	3.31
7	311	Manufacture of fertilizers and pesticides	6164	2.57
8	973	Repair of motor vehicles and motor cycles	5819	2.42
9	212	Tea processing	5139	2.13
10	235	Weaving and finishing of cotton textiles in handlooms other than Khadi	5000	2.08
11	310	Manufacture of basic and industrial organic and inorganic chemicals	4628	1.92
12	270	Manufacture of veneer, plywood and their products	3566	1.48
13	357	Manufacture of machine tools, their parts and accessories	3376	1.40
14	285	Manufacture of periodicals, books and journals	3256	1.35
15	263	Manufacture of coir and coir products	3112	1.29
16	302	Manufacture of rubber products not elsewhere classified	2818	1.17
17	300	Tyre and tube industries	2725	1.13
18	360	Manufacture of electrical industrial machinery and apparatus	2678	1.11
19	203	Canning and processing of fish	2264	0.94

(1)	(2)	(3)	(4)	(5)
20	284	Printing and publishing of news papers	2252	0.94
21	370	Ship building and repairing	2226	0.92
22	261	Manufacture of all types of threads	2189	0.91
23	314	Manufacture of perfumes, cosmetics lotions, hair dressing	2141	0.89
24	313	Manufacture of drugs and medicines	1922	0.80
25	390	Manufacture of medical, surgical and scientific equipment	1452	0.60
26	361	Manufacture of insulated wires and cables	1264	0.52
27	340	Manufacture of fabricated metal products	1206	0.50
28	374	Manufacture of motor vehicles and parts	1191	0.50
29	979	Repair enterprises not elsewhere classified	1177	0.49
30	367	Manufacture of electronic components and accessories	1166	0.48
31	335	Aluminium manufacturing	1114	0.46
32	343	Manufacture of hand tools and general hardware	1073	0.45
33	364	Manufacture of radio and television transmitting and receiving sets etc.	1069	0.44
34	206	Manufacture and refining of sugar	1046	0.43
35	341	Manufacture of structural metal products	1007	0.42
		Other Industries	25233	10.48
		All Industries	240803	100.00

### 3.9. Wages to Workers

The amount paid to Workers in the factory sector during 1983-84 is Rs. 156 crores as against Rs. 122 Crores during the previous year. Though the Workers have decreased by 6.51 per cent, the Wages paid have increased by 27.69 per cent. This shows an improvement in the rate of Wages paid to Workers in the factory sector. The amount paid by way of wages is the highest in the Generation and Transmission of Electric Energy with Rs. 18.42 crores followed by Tyre and Tube Industries with Rs. 18.12 crores. There are 28 group of Industries with annual wage bill of Rs. 1 crore and more during the year as was the case during the previous year also. The Workers in the Cashew processing Units are low paid compared to their counterpart in other Industries. Though the Cashew workers in processing

Units formed 30.99 per cent of the total workers their share in the Total wages bill of the sector is only 5.44 per cent. At the same time the workers in the generation and Transmission of Electric Energy who formed only 7.24 per cent of the Total workers got a share of 11.80 per cent of the total wages paid in the sector. It is seen that 28 groups of Industries have paid Rs. 1 crore or more as wages to their workers as against 21 groups in the previous year. These Industries are arranged in descending order of magnitude in Table 12 below:

TABLE 12

## Arrangement of Industries According to Wages to Workers

Sl. No.	Code	Name of Industry	Wages (in lakhs)	Percentage to total
(1)	(2)	(3)	(4)	(5)
1	400	Generation and transmission of electric energy	1842.21	11.80
2	300	Tyre and tube industries	1812.03	11.60
3	226	Manufacture of beedi	1151.44	7.37
4	231	Cotton, spinning and weaving in mill	1143.25	7.32
5	235	Weaving and finishing of cotton textiles in handlooms other than khadi	1125.88	7.21
6	311	Manufacture of fertilizers and pesticides	890.78	5.70
7	214	Cashewnut processing	849.11	5.44
8	973	Repair of motor vehicles and motor cycles	665.70	4.26
9	310	Manufacture of basic and industrial organic and inorganic chemicals	565.98	3.63
10	357	Manufacture of machine tools their parts and accessories	348.40	2.23
11	360	Manufacture of electrical industrial machinery and apparatus	266.24	1.70
12	285	Manufacture of periodicals, books	253.36	1.62
13	314	Manufacture of perfumes, cosmetics lotions, hair dressing	245.79	1.57
14	370	Ship building and repairing	234.08	1.50
15	270	Manufacture of veneer, plywood and their products	229.69	1.47

(1)	(2)	(3)	(4)	(5)
16	261	Manufacture of all types of threads	225.64	1.44
17	212	Tea processing	215.48	1.38
18	280	Manufacturing of pulp, paper and paper board	210.44	1.35
19	217	Sawing and planing of wood (other than plywood)	197.05	1.26
20	302	Manufacture of rubber products not elsewhere classified	183.75	1.18
21	335	Aluminium manufacturing	163.81	1.05
22	284	Printing and publishing of newspapers	163.63	1.05
23	374	Manufacture of motor vehicles and parts	132.80	0.85
24	268	Manufacture of coir and coir products	125.06	0.80
25	314	Manufacture of perfumes cosmetics lotions hair dressing	123.05	0.79
26	979	Repair enterprises not elsewhere classified	119.65	0.77
27	380	Manufacture of medical, surgical and scientific equipment	111.34	0.71
28	361	Manufacture of insulated wires and cables	100.85	0.65
		Other Industries	1921.75	12.30
		All Industries	15618.14	100.00

### 3.10 Emoluments

The total emoluments constituting wages, salaries, bonus and imputed value of benefits in kind paid to the employees in the factory sector during the year 1983-84 is Rs. 222 crores as against Rs. 199 crores in 1982-83. Despite the decrease in employment, the Emoluments paid are seen to have gone up. This is due to better payment and other benefits provided in the factory sector. The highest amount of emoluments paid to employees is in the Industries of Generation and Transmission of Electric Energy. It paid Rs. 33 crores as emoluments which formed 14.84 per cent of the total emoluments paid in the sector. It is followed by cashewnut processing with Rs. 17 crores. The 3rd and 4th places are occupied by cotton spinning and weaving in mills and Manufacture of fertilizers and pesticides as was the case in the previous year also. There are 42 groups of Industries with total emoluments of Rs. 1 crore or more in the year as against 43 groups during the previous year. They are arranged in descending order of magnitude of amount paid in Table 13 below:



TABLE 13

**Arrangement of industries according to total emoluments**

<i>Sl. No.</i>	<i>Code</i>	<i>Name of Industries</i>	<i>Total emoluments</i>	<i>Percentage to total</i>
(1)	(2)	(3)	(4)	(5)
1	400	Generation and transmission of electric energy	3292.99	14.84
2	214	Cashewnut processing	1741.91	7.84
3	231	Cotton spinning, weaving, shrinking in mills	1508.36	6.79
4	311	Manufacture of fertilizers and pesticides	1444.69	6.52
5	310	Manufacture of basic and industrial organic and inorganic chemicals	1033.35	4.65
6	320	Manufacture of structural clay products	1022.66	4.60
7	973	Repair of motor vehicles and motor cycles	851.10	3.83
8	226	Manufacture of bidi	771.63	3.47
9	357	Manufacture of machine tools, their parts and accessories	683.64	3.08
10	370	Ship building and repairing	503.53	2.27
11	300	Tyre and tube industries	492.07	2.22
12	360	Manufacture of electrical industrial machinery	454.72	2.50
13	284	Printing and publishing of newspapers	448.44	2.02
14	280	Manufacture of pulp, paper and paper board	436.05	1.96
15	314	Manufacture of perfumes, cosmetics, lotions	371.27	1.67
16	235	Weaving and finishing of cotton textiles in handloom	355.16	1.60

(1)	(2)	(3)	(4)	(5)
17	270	Manufacture of veneer, plywood and their products	354.60	1.60
18	285	Printing and publishing of periodicals, books, etc.	343.10	1.54
19	212	Tea processing	337.54	1.52
20	261	Manufacture of all types of threads, cordage, etc.	324.63	1.46
21	302	Manufacture of rubber products not elsewhere classified	289.20	1.30
22	335	Aluminium manufacturing	273.27	1.23
23	271	Sawing and planing of wood (other than plywood)	266.32	1.20
24	313	Manufacture of drugs and medicines	241.16	1.09
25	380	Manufacture of medical, surgical and scientific equipments	239.72	1.08
26	268	Manufacture of coir and coir products	227.06	1.02
27	367	Manufacture of electronic components and accessories not elsewhere classified	199.78	0.90
28	361	Manufacture of insulated wires and cables	176.12	0.79
29	364	Manufacture of radio and television transmitting and receiving sets, etc.	173.44	0.78
30	979	Repair of enterprises not elsewhere classified	165.01	0.74
31	374	Manufacture of motor vehicles and parts	164.74	0.74
32	206	Manufacture and refining of sugar (vacuum pan sugar factories)	149.92	0.68
33	304	Petroleum refineries	145.28	0.65
34	330	Iron and Steel Industries	145.02	0.65

(1)	(2)	(3)	(4)	(5)
35	363	Manufacture of electrical apparatus, appliances and other parts	142.31	0.64
36	203	Canning and processing of fish	140.10	0.63
37	340	Manufacture of fabricated metal products such as metal covers	134.41	0.61
38	341	Manufacture of structural metal products	132.13	0.59
39	324	Manufacture of cement, lime and plaster	129.27	0.58
40	343	Manufacture of hand tools and general hardware	117.23	0.53
41	289	Printing, publishing and allied activities not elsewhere classified	113.79	0.51
42	331	Foundaries for casting and forging iron and steel	108.34	0.49
		Other Industries	1563.41	7.04
		All Industries	22208.03	100.00

### 3.11 Input

The total inputs consumed by the factory sector during the year 1983-84 are estimated as worth Rs.1744 crores as against Rs.1941 crores in the previous year. Of this, 91.87 per cent is the cost of raw materials and 5.49 per cent cost of fuels and 8.13 per cent cost of other items of input. There are 45 groups of Industries with a consumption of inputs valued at Rs. 5 crores or more. They are arranged in descending order of value of inputs consumed in Table 14 below:

TABLE 14

#### Arrangement of industries according to total input

Sl. No.	Code	Name of Industry	Total input Rs. in lakhs	Percentage to total
(1)	(2)	(3)	(4)	(5)
1	304	Petroleum refineries	55286.24	31.71
2	311	Manufacture of fertilisers and pesticides	14812.93	8.49
3	212	Tea processing	7803.26	4.47

(1)	(2)	(3)	(4)	(5)
4	214	Cashewnut processing like drying sheeling, roasting, salting	6346.96	3.65
5	302	Manufacture of rubber products not elsewhere classified	5950.88	3.41
6	300	Tyre and tube industries	5390.29	3.09
7	314	Manufacture of perfumes, cosmetics lotions, hair dressing	5305.61	3.04
8	231	Cotton spinning, weaving shrinking of cotton textiles	5283.25	3.04
9	203	Canning, preservations and processing of fish	4909.27	2.82
10	280	Manufacture of pulp paper and paper board	4714.76	2.70
11	211	Manufacture of other edible oils and fats	4463.50	2.56
12	310	Manufacture of basic and industrial organic and inorganic chemicals	4000.73	2.29
13	268	Manufacture of coir and coir products	2899.99	1.66
14	284	Printing and publishing of news papers	2850.56	1.63
15	400	Generation, transmission and distribution of electric energy	2810.77	1.61
16	271	Sawing and planing of wood	2265.10	1.30
17	360	Manufacture of electrical industrial machinery	2061.04	1.18
18	370	Ship building and repairing	1702.12	0.98
19	313	Manufacture of drugs and medicines	1620.56	0.93
20	235	Weaving and finishing of cotton textiles in handloom	1580.47	0.91
21	335	Aluminium Manufacturing	1434.67	0.82
22	261	Manufacture of all types of threads, cordage, etc.	1331.60	0.76
23	340	Manufacture of fabricated metal products such as metal covers	1328.84	0.76
24	357	Manufacture of machine tools, their parts and accessories	1304.64	0.75

(1)	(2)	(3)	(4)	(5)
25	226	Manufacture of beedi	1299.00	0.74
26	320	Manufacture of structural clay products	1192.61	0.68
27	202	Canning and preservation of fruits and vegetables	1126.54	0.65
28	336	Zinc manufacturing	1095.15	0.63
29	270	Manufacture of veneer, plywood and products	1088.51	0.62
30	204	Grain mill products	1074.78	0.62
31	330	Iron and steel industries	1052.47	0.60
32	361	Manufacture of insulated wire and cables	1030.07	0.59
33	219	Manufacture of food products not elsewhere classified	1029.78	0.59
34	380	Manufacture of medical, surgical, scientific equipment	924.81	0.53
35	362	Manufacture of dry and wet batteries	846.55	0.49
36	366	Manufacture of Electronic Computer, Control Instruments and other equipments	775.16	0.44
37	216	Manufacture of prepared animal feeds	763.25	0.44
38	364	Manufacture of radio and television transmitting and receiving sets, etc.	752.47	0.43
39	374	Manufacture of Motor vehicles and parts	729.85	0.42
40	341	Manufacture of structural metal products	690.60	0.40
41	324	Manufacture of cement, lime and plaster	622.64	0.36
42	217	Manufacture of starch	622.33	0.36
43	367	Manufacture of electronic components	542.24	0.31
44	343	Manufacture of hand tools and hardware	521.18	0.30
45	331	Foundries for casting and forging iron and steel	435.18	0.25
		Other Industries	8702.40	4.99
		All Industries	174375.61	100.00

### 3.12 Output

The gross value of goods and Services produced in the factory sector during the year 1983-84 is estimated as Rs. 2343 crores as against Rs. 2484 crores during the previous year. The value of output is the highest in the industry of Petroleum Refineries. It provided goods worth Rs. 570 crores. This forms 24.31 per cent of the total output in the factory sector.

TABLE 15

#### Arrangements of industries according to total output

<i>Sl. No.</i>	<i>Code</i>	<i>Name of Industry</i>	<i>Output Rs. lakhs</i>	<i>Percentage</i>
(1)	(2)	(3)	(4)	(5)
1	304	Petroleum Refineries	56954.31	24.31
2	311	Manufacture of fertilizers and pesticides	24754.29	10.58
3	212	Tea processing	11783.82	5.03
4	214	Cashewnut processing	10714.75	4.57
5	400	Generation and Transmission of electric energy	9992.86	4.27
6	310	Manufacture of basic and industrial organic and inorganic chemicals	9587.58	4.09
7	231	Cotton, spinning and weaving in mill	7725.24	3.30
8	300	Tyre and Tube Industries	7225.87	3.08
9	302	Manufacture of rubber products not elsewhere classified	7076.95	3.02
10	314	Manufacture of perfumes, cosmetics, lotions, hair dressing	6371.50	2.72
11	280	Manufacture of pulp, paper and paper board	5797.81	2.47
12	203	Canning and processing of fish	5102.03	2.18
13	211	Manufacture of other edible oils	4784.80	2.04
14	235	Weaving and finishing of cotton textiles in handlooms other than khadi	3180.59	1.36
15	268	Manufacture of coir and coir products	3149.47	1.34
16	284	Printing and publishing of newspapers	3052.56	1.30
17	271	Sawing and planing of wood (other than plywood)	2978.75	1.27

(1)	(2)	(3)	(4)	(5)
18	357	Manufacture of machine tools, their parts and accessories	2938.02	1.25
19	320	Manufacture of structural clay products	2670.09	1.14
20	360	Manufacture of electrical industrial machinery and apparatus	2409.71	1.03
21	261	Manufacture of all types of threads	2354.25	1.00
22	226	Manufacture of beedi	2223.90	0.95
23	270	Manufacture of veneer, plywood and their products	2052.01	0.89
24	370	Ship building and repairing	2030.36	0.87
25	285	Manufacture of periodicals, books and journals	1808.63	0.77
26	380	Manufacture of medical, surgical and scientific equipment	1777.13	0.76
27	340	Manufacture of fabricated metal products	1702.52	0.73
28	313	Manufacture of drugs and medicines	1648.48	0.70
29	330	Iron and Steel Industries	1379.82	0.59
30	335	Aluminium Manufacturing	1356.71	0.58
31	973	Repair of motor vehicles and motor cycles	1300.16	0.55
32	202	Canning and processing of fish	1244.70	0.53
33	336	Zinc manufacturing	1167.92	0.51
34	219	Manufacture of food products not elsewhere classified	1163.17	0.50
35	204	Grain mill products	1152.81	0.49
36	343	Manufacture of hand tools and general hardware	1135.11	0.48
37	364	Manufacture of radio and television transmitting and receiving sets etc.	1126.35	0.48
38	324	Manufacture of cement, lime and plaster	1061.27	0.45
39	362	Manufacture of electrical apparatus	1049.62	0.45
40	361	Manufacture of insulated wires and cables	982.37	0.42
41	367	Manufacture of electronic components and accessories	959.02	0.41
42	374	Manufacture of Motor vehicles and parts	952.95	0.41
43	366	Manufacture of electronic computers	902.53	0.39
44	206	Manufacture and refining of sugar	848.78	0.36

(1)	(2)	(3)	(4)	(5)
45	216	Manufacture of prepared animal feeds	782.86	0.33
46	331	Foundries for casting and forging iron and steel	743.38	0.32
47	341	Manufacture of structural metal products	707.26	0.30
48	217	Manufacture of starch	704.80	0.30
49	363	Manufacture of electrical apparatus	688.98	0.29
50	420	Water Supply	671.83	0.29
51		Other Industries	8318.54	3.35
		All Industries	234279.22	100.00

### 3.13 Net Value added

The Contribution of factory sector towards value added by manufacture is estimated as Rs. 520.97 crores in 1983-84 as against Rs. 481.17 crores in 1982-83. The highest contribution towards value added is from Manufacture of fertilisers and pesticides which contributed 16.86 per cent of the total value added. The second place is occupied by Generation and Transmission of Electrical Energy with a contribution of 11.30 per cent. During the previous year this industry contributed 13.59 per cent of the total value added.

There are 29 groups of Industries which contributed more than 2 crores towards value added by manufacture. They are arranged in the descending order of value added in Table 16 below:

TABLE - 16

#### Arrangements of industries according to value added

Sl. No.	Code	Name of Industries	Value added	Percentage
(1)	(2)	(3)	(4)	(5)
1	311	Manufacture of fertilizers and pesticides	8785.88	16.86
2	400	Generation and transmission of electric energy	5881.22	11.30
3	310	Manufacture of basic and industrial organic and inorganic chemicals	5136.63	9.87
4	214	Cashewnut processing	4338.94	8.33
5	212	Tea processing	3860.88	7.41



(1)	(2)	(3)	(4)	(5)
6	231	Cotton, spinning and weaving in mills	1912.09	3.67
7	235	Weaving and finishing of cotton textiles in handlooms other than khadi	1584.68	3.04
8	300	Tyre and Tube Industries	1469.89	2.84
9	320	Manufacture of structural clay products	1393.03	2.67
10	285	Manufacture of periodicals, books and journals	1322.83	2.54
11	302	Manufacture of rubber products not elsewhere classified	1085.32	2.08
12	261	Manufacture of all types of threads	992.35	1.90
13	314	Manufacture of perfumes, cosmetics lotions, hair dressing	979.80	1.88
14	226	Manufacture of beedi	921.82	1.77
15	270	Manufacture of veneer, plywood and their products	912.35	1.75
16	973	Repair of motor vehicles and motor cycles	829.24	1.59
17	380	Manufacture of medical, surgical and scientific equipment	803.47	1.54
18	271	Sawing and planing of wood (other than plywood)	676.02	1.31
19	343	Manufacture of hand tools and general hardware	594.52	1.14
20	324	Manufacture of cement lime and plaster	376.87	0.72
21	364	Manufacture of radio and television transmitting and receiving sets etc.	345.32	0.66
22	340	Manufacture of fabricated metal products	328.00	0.63
23	211	Manufacture of other edible oils	303.69	0.58
24	206	Manufacture and refining of sugar	290.17	0.56
25	367	Manufacture of electronic components	282.17	0.54
26	363	Manufacture of electrical apparatus	265.87	0.51
27	330	Iron and Steel Industries	264.32	0.51
28	360	Manufacture of electrical industrial machinery	254.71	0.49
29	374	Manufacture of Motor vehicles and parts	220.86	0.42
		Other Industries	5684.66	10.91
		All Industries	52097.60	100.00

## CHAPTER 4

### RELATIVE IMPORTANCE OF DIFFERENT INDUSTRIES

The Establishments covered in the Annual survey of Industries 1983-84 have been classified into Major Industries Groups of Two digit level-classification, ranked according to their contributions to value added and presented in Table 18. The table shows that the Highest amount of Value added by Manufacture was contributed by Manufacture of Chemicals and chemical products except petroleum products with Rs. 14985 lakhs and the lowest by water works and Supply with Rs. 165 lakhs. It also reveals that the first 4 places are occupied by:

- (i) Manufacture of Chemicals and Chemical products, except products of Petroleum and Coal (28.76 per cent),
- (ii) Food products (18.37 per cent),
- (iii) Electricity (11.29 per cent) and
- (iv) Manufacture of Rubber, Plastic, Petroleum and Coal Products.

The above 4 industries together employed 52.85 per cent of the total employees in the factory sector in the State and contributed 70.32 per cent of the total output. They accounted for 72.38 per cent of the total input and contributed 66.31 per cent of the Value added. They also shared 63.84 per cent of the total fixed capital.

Some other important aggregates like fixed Capital, Working Capital, Outstanding loan, Employment, Earnings gross output, input etc. are given in Table 19 and their percentages in Table 20.

The Structural characteristics in respect of each Industry group are given in Table 21. The industry groups are arranged in the descending order of Capital-Value added ratio.

TABLE 17

#### Ranking of Major Industry Groups

Sl. No	Industry Code	Description	Value added (Rs. in lakhs)	Rank
(1)	(2)	(3)	(4)	(5)
1	31	Manufacture of chemicals and chemical products	14985	1
2	20, 21	Manufacture of food products	9572	2
3	40	Electricity	5882	3

(1)	(2)	(3)	(4)	(5)
4	30	Manufacture of rubber, plastic, petroleum and coal products	4103	4
5	23, 24	Manufacture of cotton textiles and manufacture of wool, silk and synthetic fibre textiles	3674	5
6	32	Manufacture of non-metallic mineral products	1993	6
7	36	Manufacture of electrical manufacturing apparatus and supplies and parts	1908	7
8	27	Manufacture of wood and wood products, furniture and fixtures	1730	8
9	35	Manufacture of machinery, machine tools and parts	1659	9
10	28, 29	Manufacture of paper and paper products and printing and publishing and allied industries and Manufacturing of leather and fur products	1497	10
11	97	Repair, services	1010	11
12	34	Manufacture of metal products and parts except machinery and transport	1000	12
13	22	Manufacture of beverages, tobacco and tobacco products	847	13
14	38	Other manufacturing industries	832	14
15	33	Basic metal and alloy industries	759	15
16	26	Manufacture of textile products (including wearing apparel)	241	16
17	37	Manufacture of transport equipments and parts	236	17
18	42	Water works and Supply	165	18

## PRINCIPAL CHARACTERISTICS OF EACH

Sl.No. Code		Name of Industry	No. of Units	Fixed capital	Working capital	Productive capital
(1)	(2)	(3)	(4)	(5)	(6)	(7)
1	31	Manufacture of chemical and chemical products	145	9967	6184	16151
2	20,21	Manufacture of food products	564	2661	5030	7691
3	40	Electricity	7	44373	15350	59723
4	30	Manufacture of rubber, plastic, petroleum and coal products	169	20035	8056	28091
5	23,24	Manufacture of cotton textiles and manufacture of wool, silk and synthetic fibre textiles	165	4600	1030	5630
6	32	Manufacture of non-metallc mineral products	312	1403	1120	2523
7	36	Manufacture of electrical manufacturing apparatus and supplies and parts	60	4603	2433	7036
8	27	Manufacture of wood and wood products, furniture and fixtures	667	904	1406	2310
9	35	Manufacture of machinery, machine tools and parts	90	1302	1251	2553
10	28,29	Manufacture of paper and paper products and printing and publishing and allied industries, and manufacture of leather and fur products	147	16024	1708	17732
11	97	Repair, services	97	384	131	515
12	34	Manufacture of metal products and parts except machinery and transport	147	960	1211	2171
13	22	Manufacture of beverages, tobacco and topacco products	331	360	352	712
14	38	Other manufacturing industries	17	520	753	1273
15	33	Basic metal and alloy industries	44	1623	1394	3017
16	26	Manufacture of textile products (including wearing apparel)	102	960	2481	3441
17	37	Manufacture of transport equipments and parts	26	9308	1603	10911
18	42	Water works and supply	7	618	9	627
All Industries			3097	120605	51502	172107

## MAJOR INDUSTRY GROUP 1983-84

(Rs. in lakhs)

<i>Invested capital</i>	<i>Outstanding loan</i>	<i>No. of persons</i>	<i>Total emoluments</i>	<i>Total input</i>	<i>Total output</i>	<i>Depreciation</i>	<i>Value added</i>	<i>Factor payment</i>	<i>Net income</i>
(8)	(9)	(10)	(11)	(12)	(13)	(14)	(15)	(16)	(17)
13814	11818	10672	2097	17342	33630	1303	14985	807	14178
11068	9816	81386	2784	29933	39842	337	9572	944	8628
51695	45308	23987	3293	2810	9992	1300	5882	13	5869
31102	26071	11320	1992	76108	81267	1051	4108	1081	3027
7109	5695	18952	1973	7463	11716	579	3674	1740	1934
2546	2097	13819	1227	2339	4512	210	1993	392	1601
9291	8627	9407	1617	6824	9165	433	1908	1658	250
2355	1395	12656	729	3778	5621	113	1730	207	1523
2903	1306	4485	883	1793	3630	178	1659	489	1170
18543	11364	10514	1371	8617	11510	1396	1497	1541	(-)-44
525	49	7042	1020	277	1319	32	1010	6	1004
2065	1336	4006	435	2947	4058	111	1000	199	801
734	528	18485	749	2253	3135	35	847	162	685
1172	1678	1778	307	959	1839	48	832	179	653
4084	2418	3679	660	4361	5366	246	759	262	497
3065	2219	4665	328	3559	3847	47	241	121	120
14979	16117	3822	701	2537	3110	337	236	994	(-)-753
627	326	228	41	475	689	49	165	14	151
177677	148168	240803	22208	174375	234279	7806	52098	10809	41289

## PRINCIPAL CHARACTERISTICS OF EACH

<i>Sl. No.</i>	<i>Code</i>	<i>Name of Industry</i>	<i>No. of units</i>	<i>Fixed capital</i>	<i>Working capital</i>	<i>Productive capital</i>
1	31	Manufacture of chemical and chemical products (except products of petroleum and coal)	4.68	8.26	12.00	9.38
2	20,21	Manufacture of food products	18.21	2.20	9.77	4.48
3	40	Electricity	0.23	36.78	29.81	34.70
4	30	Manufacture of rubber plastic petroleum and coal products	5.46	16.60	15.64	16.32
5	23,24	Manufacture of cotton textiles and Manufacture of wool, silk and synthetic fibre textiles	5.33	3.80	2.01	3.27
6	32	Manufacture of non-metallic mineral products	10.07	1.16	2.17	1.48
7	36	Manufacture of electrical manufacturing apparatus and supplies and parts	1.94	3.81	4.72	4.09
8	27	Manufacture of wood and wood products, furniture and fixtures	21.53	0.75	2.73	1.34
9	35	Manufacture of machinery, machine tools and parts	2.91	1.08	2.43	1.48
10	28,29	Manufacture of paper and paper products and printing and publishing and allied industries and Manufacture of leather and fur products (except paper)	4.74	13.28	3.32	10.30
11	97	Repair services	3.13	0.32	0.25	9.30
12	34	Manufacture of metal products and parts except machinery and transport	4.75	0.89	2.35	1.26
13	22	Manufacture of beverages tobacco and tobacco products	10.69	0.30	0.68	0.41
14	38	Other manufacturing industries	0.55	0.43	1*46	0.74
15	33	Basic metal and alloy industries	1.42	1.33	1.71	1.75
16	26	Manufacture of textiles products (including wearing apparel)	3.29	0.88	4.82	2.00
17	37	Manufacture of transport (equipments and parts)	0.84	7.72	3.11	6.34
18	42	Water works and supply	0.23	0.50	0.02	0.36
All Industries			100.00	100.00	100.00	100.00



**TABLE**  
**IMPORTANT STRUCTURAL**

Sl. No.	Industry Code	Description of Industry	Ratio of fixed capital to value added	Ratio of fixed capital to gross output
(1)	(2)	(3)	(4)	(5)
1	20, 21	Manufacture of food products	0.28	0.07
2	97	Repair services	0.38	0.29
3	22	Manufacture of beverages, tobacco and tobacco products	0.43	0.11
4	27	Manufacture of wood and wood products furniture and fixtures	0.52	0.16
5	38	Other Manufacturing Industries	0.63	0.28
6	31	Manufacture of chemical and chemical products	0.67	0.30
7	32	Manufacture of non-metallic mineral products	0.70	0.31
8	35	Manufacture of machinery, machine tools and parts	0.78	0.36
9	34	Manufacture of metal products and parts except machinery	0.96	0.24
10	23, 24	Manufacture of cotton textiles and Manufacture of wool, silk and synthetic fibre textiles	1.52	0.39
11	33	Basic metal and alloy industries	1.96	0.30
12	36	Manufacture of electrical manufacturing apparatus, and supplies and parts	2.41	0.50
13	42	Water works and supply	3.75	0.90
14	26	Manufacture of textile products (including wearing apparel)	3.98	0.25
15	30	Manufacture of rubber, plastic, petroleum and coal products	4.88	0.25
16	40	Electricity	7.54	4.44
17	28, 29	Manufacture of paper and paper products and printing and publishing and allied industries and Manufacturing of leather and fur products	10.70	1.39
18	37	Manufacture of transport equipments and parts	39.44	2.99
All Industries			2.31	0.51



## RATIO OF INDUSTRY

<i>Ratio of value added to gross output</i>	<i>Gross input output ratio</i>	<i>Ratio of emoluments to value added</i>	<i>Fixed Capital per employee (Rs.)</i>	<i>Emoluments per Employee (Rs.)</i>	<i>Output Employee (Rs.)</i>	<i>Value added employee (Rs.)</i>
(6)	(7)	(8)	(9)	(10)	(11)	(12)
0.24	0.75	0.29	3270	3421	48954	11761
0.77	0.21	1.01	5453	14485	18730	14343
0.27	0.62	0.88	1948	4052	16960	4582
0.31	0.67	0.42	7143	5760	44414	13669
0.45	0.52	0.37	29246	17267	103431	46794
0.45	0.52	0.14	93394	19650	315124	140414
0.44	0.51	0.62	10153	8879	32868	14422
0.46	9.49	0.53	29030	19688	80936	36990
0.27	0.73	0.44	23964	10858	101298	24963
0.31	0.64	0.54	24272	10411	61819	19386
0.15	0.81	0.80	44115	17940	145855	22533
0.21	0.74	0.85	17253	17189	97427	20283
0.24	0.69	0.25	271052	17982	302193	72368
0.06	0.93	1.36	80579	7031	82465	5166
0.05	0.94	0.48	176988	17597	717906	36290
0.59	0.28	0.56	185762	13786	41830	24624
0.13	0.75	0.92	152406	13040	109473	14238
0.08	0.82	2.97	243537	18341	81371	6175
0.22	0.74	0.43	50085	9222	97291	21635

## Annual Survey of Industries 1983-84

Sl. No.	Industry Code	Name of industry	Number of units (4)	Fixed capital (5)	Working capital (6)	Productive capital (7)	Invested Capital (8)	Outstanding Loan (9)	Mandays worked (Nos.) (10)	All Workers (Nos.) (11)	All Employees (Nos.) (12)	(Rs. in lakhs)	
												Wages to Workers (13)	Total em-ploym-ents (14)
1	200	Manufacture & of dairy products	6	74.30	40.98	115.28	93.37	42.09	170075	474	575	42.06	62.30
2	202	Canning and preservation of fruits and vegetables	23	73.88	87.41	161.29	222.90	222.84	192918	637	831	21.64	37.10
3	203	Canning & processing of fish	56	446.46	129.10	575.56	941.41	1180.00	588936	1746	2264	81.87	140.10
4	204	Grain mill products	49	147.89	25.45	173.34	264.65	178.13	148689	529	834	22.02	38.59
5	205	Manufacture of bakery products	7	59.66	38.75	98.41	84.07	10.28	73689	169	252	17.55	32.60
6	206	Manufacture of refining of sugar	2	74.80	270.91	345.72	492.03	184.03	317999	664	1046	00.75	149.92
7	209, 210, 211	Manufacture of other edible oils	36	280.43	951.83	1232.26	1519.82	435.47	184496	446	734	27.70	56.31
8	212	Tea processing	89	865.32	912.51	1777.83	1874.88	170.30	1812466	4570	5139	215.48	337.54

9	213	Coffee curing, roasting and grinding	7	24.62	76.43	101.05	60.90	26.56	168737	671	859	21.27	37.62
10	214	Cashewnut processing	263	268.06	1639.95	1958.00	4559.22	6565.34	7505294	62207	67397	849.11	1741.91
11	215, 216	Manufacture of prepared animal feeds	9	156.36	345.62	501.98	273.82	140.90	172493	558	806	48.98	71.54
12	217	Manufacture of starch	6	133.97	149.87	283.84	282.60	606.78	112607	281	342	36.21	54.48
13	219	Manufacture of food products not elsewhere classified	11	55.71	311.99	367.70	405.22	51.19	80245	253	307	14.27	24.68
14	220	Distilling, rectifying & blending of spirits	4	153.77	92.02	245.79	232.43	412.35	87559	163	275	18.36	33.21
15	222	Malt liquors & malt	2	114.70	114.07	228.77	238.47	86.55	61336	154	191	19.38	32.60
16	223, 224 & 226	Manufacture of beedi	323	94.64	146.32	240.96	261.49	28.95	5535101	17727	17976	1157.06	780.89
17	227, 229	Manufacture of tobacco	2	0.59	1.41	2.00	1.92	..	12163	36	43	2.06	2.98
18	231	Cotton spinning and weaving in mill	25	3986.33	675.13	4661.46	5949.14	4667.20	3920142	1181	12520	1143.26	1508.36
19	232	Printing, dyeing & bleaching of cotton textiles	8	12.67	16.63	29.30	42.96	45.11	53040	142	192	9.00	14.98

APPENDIX (Contd.)  
Annual Survey of Industries 1989-94—(Contd.)

Sl. No.	Industry Code	Name of Industry	No. of Unit	Fuels consumed	Materials consumed	Other Input	Total Input	Products	Other Output	Total Output	Depreciation	Value added
(1)	(2)	(3)	(4)	(15)	(16)	(17)	(18)	(19)	(20)	(21)	(22)	(23)
1	200,	Manufacture of dairy products	6	19.52	405.68	19.65	483.54	522.60	20.64	543.24	6.11	59.58
2	202	Canning and preservation of fruits and vegetables	23	11.07	1085.32	10.33	1126.54	1203.08	41.62	1244.70	7.62	110.54
3	203	Canning & processing of fish	56	83.68	4577.78	91.56	4909.27	4868.50	233.53	5102.03	66.79	125.97
4	204	Grain mill products	49	18.12	1018.13	18.73	1074.78	1132.63	20.18	1152.81	20.80	57.24
5	205	Manufacture of bakery products	7	19.47	282.96	9.84	319.24	435.33	3.69	459.02	8.24	131.54
6	206	Manufacture of refining of sugar	2	24.50	427.56	29.59	539.69	836.22	12.56	848.78	18.92	290.17
7	209, 210, 211	Manufacture of other edible oils	36	51.61	4523.39	29.17	4711.17	4908.27	140.11	5049.38	25.22	311.99
8	212	Tea processing	89	502.90	6969.36	265.29	7803.27	11710.49	73.33	11783.82	119.67	3860.88
9	213	Coffee curing roasting and grinding	7	4.31	151.58	7.38	175.18	176.65	90.74	267.39	2.42	89.79
10	214	Cashewnut processing	263	48.21	5891.02	95.81	6346.97	10546.14	168.61	10714.75	28.84	4338.94

11	215, Manufacture of prepared animal feeds	9	25.18	730.25	6.24	791.36	781.90	27.48	809.38	16.32	1.70
12	217 Manufacture of starch	6	74.61	503.66	21.77	622.34	698.45	6.35	704.80	10.44	72.02
13	219 Manufacture of food products not elsewhere classified	11	11.04	999.36	3.31	1029.77	1162.85	0.32	1163.17	5.95	127.45
14	220 Distilling, rectifying & blending of spirits	4	5.43	178.72	0.61	196.16	234.65	5.59	240.24	9.10	34.98
15	222 Malt liquors & malt	2	27.02	137.56	13.05	193.35	231.50	41.30	272.80	14.98	64.47
16	223, Manufacture of beedi & 226	323	12.03	841.90	567.17	1610.12	1680.40	688.14	2363.54	10.83	747.54
17	227, Manufacture of tobacco	2	0.03	53.84	0.07	54.21	54.08	..	54.08	0.03	(-)0.16
18	231 Cotton spinning and weaving in mill	25	473.85	4374.06	251.87	5283.26	7552.68	172.56	7725.24	529.89	1912.09
19	232 Printing, dyeing & bleaching of cotton textiles	8	12.50	130.94	4.70	132.41	139.53	30.56	170.09	1.48	16.20

## Annual Survey of Industries 1983-84 (Contd.)

Sl. No.	Industry Code	Name of Industry	(1)	(2)	(3)	(4)	(5)	(6)	(7)	(8)	(9)	(10)	(11)	(12)	(13)	(14)
						Number of Unit	Fixed Capital	Working Capital	Productive Capital	Invested Capital	Outstanding Loan	Mandays worked	All Workers	All employees	Wage to Workers	Total emolu-ments
			(1)	(2)	(3)	(4)	(5)	(6)	(7)	(8)	(9)	(10)	(11)	(12)	(13)	(14)
20	235	Weaving and finishing of cotton textiles in handlooms other than khadi	196	173.59	278.74	452.33	504.26	966.35	1532707	4518	5000	1125.88	355.16			
21	236, 239, 247	Weaving and finishing of cotton textiles in power looms and spinning, weaving & finishing of other textiles, synthetic fibres rayons nylons etc.	26	457.41	59.51	516.92	619.44	516.55	325169	771	1208	79.11	45.44			
22	260 & 261	Manufacture of all types of threads	6	273.32	1052.93	1926.25	1259.59	110.69	639243	2084	2564	236.97	942.69			
23	264 265	Manufacture of rain coats, ghats etc.	11	297.37	28.47	325.84	130.80	1081.53	197280	550	678	24.91	38.58			
24	268	Manufacture of coir and coir products	85	390.27	1409.82	1800.09	1673.61	926.13	740154	2309	3112	125.06	227.06			

25	270	Manufacture of veneer, plywood & other products	76	383.62	634.27	1017.89	993.73	726.52	1080457	3011	3566	229.69	354.60
26	271	Sawing & planing of wood (other than plywood)	533	368.19	514.48	882.67	914.74	388.47	2018349	7244	7980	197.06	266.32
27	272	Manufacture of wooden and cane boxes	12	16.42	11.88	28.30	35.30	8.51	29096	34	114	0.34	6.59
28	273	Manufacture of structural wooden goods	8	30.75	35.08	65.83	90.89	61.91	44284	42	148	12.19	14.56
29	274 & 275	Manufacture of wooden industrial goods	13	72.56	18.31	90.87	150.62	100.11	42416	16	167	6.10	7.70
30	276	Manufacture of wooden furniture and fixtures	21	36.13	163.03	199.16	131.32	70.59	177526	194	613	48.63	70.56
31	279	Manufacture of wood, bamboo & cane products	4	26.62	32.59	59.21	37.71	14.06	2192	..	28	0.14	0.50
32	280	Manufacture of pulp, paper and paper board	12	14446.94	784.94	15231.88	16177.09	9596.62	1165632	2313	3661	210.44	436.50
33	281	Manufacture of container & boxes of paper and paper board	16	82.50	26.53	109.08	121.13	70.32	56268	162	222	6.74	11.81

## Annual Survey of Industries 1983-84 (Contd.)

(Rs. in lakhs)

Sl. No.	Industry Code	Name of Industry	No. of units	Fuels consumed	Materials consumed	Other	Total Input	Products	Other Input	Total Output	Depreciation	Value added
(1)	(2)	(3)	(4)	(15)	(16)	(17)	(18)	(19)	(20)	(21)	(22)	(23)
20	235	Weaving and finishing of cotton textiles in handlooms other than khadi	106	25.06	1239.13	275.59	1580.47	3141.63	38.96	3180.59	15.44	1584.68
21	236, 239 & 247	Weaving and finishing of cotton textiles in power looms and spinning, weaving & finishing of other textiles, synthetic fibres, rayons, nylons etc.	25	16.01	243.12	14.71	444.39	468.50	172.18	640.68	25.44	170.85
22	260 & 261	Manufacture of all types of threads	6	109.88	1281.48	13.54	1494.18	2495.18	4.86	2500.28	34.12	1031.98
23	264 & 265	Manufacture of rain coats, hats, etc.	11	1.09	150.32	2.33	174.89	112.16	43.03	155.19	4.27	(-)-23.97
24	268	Manufacture of coir and coir products	85	29.82	2735.50	48.27	2899.99	3049.62	99.85	3149.47	37.29	212.19
25	270	Manufacture of veneer, plywood & other products	76	89.72	836.81	75.67	1088.51	2030.90	21.11	2062.01	51.15	912.35
26	271	Sawing & planning of wood (other than plywood)	533	74.83	2001.18	49.01	2262.57	2814.85	163.90	2978.75	40.16	676.20



27	272	Manufacture of wooden and cane boxes	12	4.47	32.58	5.48	44.43	50.25	9.19	59.44	2.38	12.63
28	273	Manufacture of structural wooden goods	8	5.46	82.82	10.91	105.59	118.09	10.99	129.08	2.77	20.72
29	274 & 275	Manufacture of wooden industrial goods	13	2.54	69.86	3.13	115.13	109.59	33.53	137.12	9.41	12.58
30	276	Manufacture of wooden furniture and fixtures	21	2.04	117.42	6.27	136.62	225.39	4.31	229.70	5.50	87.58
31	279	Manufacture of wood, bamboo & cane products	4	1.12	21.74	2.23	25.75	32.09	2.91	35.00	2.17	7.08
32	280	Manufacture of pulp, paper and paper board	12	1135.46	2694.97	104.43	4714.77	5781.87	15.94	5797.81	1194.85	(-) 111.81
33	281	Manufacture of container & boxes of paper and paper board	16	4.35	196.82	7.94	225.60	257.62	2.27	259.89	9.89	24.40

## APPENDIX (Contd.)

## Annual Survey of Industries 1983-1984 (Contd.)

S. No.	Industry Code	Name of Industry	Name of Units (4)	Fixed Capital (5)	Working Capital (6)	Productive Capital (7)	Invested Capital (8)	Outstanding Loan (9)	Mandays Worked (Nos.) (10)	All Workers (Nos.) (11)	All Employees (Nos.) (12)	(Rs. in lakhs)	
												Wages to Workers (13)	Total emoluments (14)
34	284	Printing and publishing of newspapers	23	588.51	546.30	1134.82	986.26	751.95	865303	1222	2252	163.63	448.44
35	285	Manufacture of periodicals, books and journals	57	455.73	269.20	724.94	667.19	377.48	932270	2759	3256	253.96	343.10
36	288	Book binding	2	0.66	..	0.66	0.67	..	..	..	..	..	..
37	289	Printing, publishing & allied activities not elsewhere classified	93	277.81	55.18	332.99	310.97	157.35	322079	905	981	82.92	113.79
38	200	Tanning, curing, & finishing embo-											
291		ssing and jap- aning of leather	4	210.78	36.79	247.57	279.78	410.73	42510	96	142	9.45	18.41
39	300	Tyre and tube industries	19	2020.01	1706.37	3726.39	3590.92	6962.45	873214	1744	2725	1812.03	400.07
40	301	Manufacture of footwear made primarily of vulcanised or moulded rubber and plastics and Manufacture of rubber products not elsewhere classified	138	987.25	857.13	1844.38	2083.09	988.25	2026811	3883	3034	187.02	290.00

2003-09

(2083.09)

41 303	Manufacture of rubber products not elsewhere classified	15	19819.35	3069.34	16882.69	16633.89	16168.24	242905	432	935	72.01	171.92
42 305 & 310	Manufacture of basic and industrial inorganic chemicals	36	3215.09	2423.86	5636.89	5182.79	1952.07	793097	3201	4628	566.82	1033.94
43 311	Manufacture of fertilizers and pesticides	22	7658.54	4869.52	12528.06	13127.72	8039.17	2100876	4541	6164	890.78	1444.69
44 312 & 313	Manufacture of drugs and medicines	47	333.82	227.18	562.00	708.46	491.77	773416	1311	1947	123.43	241.96
45 314	Manufacture of perfumes, cosmetics, lotions, hair dressings	15	714.09	841.44	1555.53	1945.96	1755.29	650988	1697	2141	245.79	371.27
46 315 & 316	Manufacture of Turpentine	8	131.88	38.56	170.44	292.52	314.58	56876	188	247	9.64	20.53
47 317	Manufacture of matches	10	3.23	1.01	4.24	6.92	5.90	45000	172	94	3.41	1.28
48 319	Manufacture of chemical products not elsewhere classified (including photochemicals, sensitised films and paper)	4	1177.88	210.67	1388.56	1345.55	1013.59	26683	42	79	5.52	15.06

## Appendix (Contd.)

## Annual Survey of Industries 1983-84 (Contd.)

Sl. No.	Industry Code	Name of Industry	No. of Unit	Fuels consumed (15)	Materials consumed (16)	Other Input (17)	Total Input (18)	Products (19)	Other Output (20)	Total Output (21)	Depreciation (22)	Value added
												(Rs. in lakhs)
(1)	(2)	(3)	(4)	(15)	(16)	(17)	(18)	(19)	(20)	(21)	(22)	(23)
34	284	Printing and publishing of newspapers	23	30.88	2527.15	74.92	2850.57	2788.50	264.00	3052.50	141.00	90.93
35	285	Manufacture of periodicals books and journals	57	12.00	362.71	31.98	431.29	496.33	1312.30	1808.63	54.51	1322.83
36	288	Book binding	2	..	..	..	0.08	..	..	..	..	(-)/0.08
37	289	Printing, publishing & allied activities not elsewhere classified	33	5.96	230.39	60.25	319.92	371.88	96.54	468.42	14.57	133.93
38	290 & 291	Tanning, curing, finishing, embossing and japanning of leather	4	2.78	64.68	1.69	74.70	68.92	3.81	72.73	12.04	(-)/14.01
39.	300	Tyre and tube industries	19	343.34	4672.32	120.30	5390.19	6844.87	381.00	7225.87	365.64	1469.89
40	301 & 302	Manufacture of footwear & ware made primarily of vulcanised or moulded rubber and plastics and Manufacture of rubber products not elsewhere classified	138	178.07	5689.47	69.24	6127.68	7141.76	131.99	7273.75	45.11	1100.96

41	Manufacture of rubber products not elsewhere classified	15	130.42	55043.02	157.02	55457.77	56764.75	415.62	57180.37	187.41	1535.19
42	303 & 304										
42	305 Manufacture of basic & industrial organic & inorganic chemicals	36	1038.44	2306.67	420.23	3997.94	6477.48	3110.10	9387.58	453.01	5136.63
43	311 Manufacture of fertilizers and pesticides	22	1835.48	11275.20	1333.34	14812.93	24716.51	67.78	24784.29	1185.48	8785.88
44	313 Manufacture of drugs & 312 and medicines	47	88.42	1404.59	35.09	1642.26	1640.34	33.21	1673.55	52.04	(- )20.79
45	314 Manufacture of perfumes, cosmetics lotions, hair dressings	15	244.91	4936.16	41.60	5305.63	6368.73	2.77	6371.50	86.07	979.80
46	315 Manufacture of & 316 turpentine	8	22.86	327.35	13.74	388.87	435.26	14.69	449.95	17.45	43.63
47	317 Manufacture of matches	10	0.78	14.65	2.73	18.16	23.63	0.04	23.67	0.30	5.21
48	319 Manufacture of chemical products not elsewhere classified (including photochemicals, sensitised films and paper	4	30.80	158.50	11.50	210.09	297.69	6.75	304.44	35.73	58.62

## Annual Survey of Industries 1983-84 (Contd.)

Sl. No.	Industry	Name of Industry	Number of Units	Fixed Capital	Working Capital	Productive Capital	Invested Capital	Outstanding Loan	Monday's Worked (Nos.)	All Workers (Nos.)	All Employees (Nos.)	Wages to Workers	Total emoluments
(1)	(2)	(3)	(4)	(5)	(6)	(7)	(8)	(9)	(10)	(11)	(12)	(13)	(14)
49	329	Manufacture of structural clay products	285	799.09	505.55	1305.24	1414.10	850.95	3455652	10872	11894	74.80	1022.66
50	321 & 323	Manufacture of china ware and porcelain ware	12	247.61	133.43	381.04	364.34	1054.98	330877	911	1181	76.87	119.66
51	324	Manufacture of Cement, Lime and plaster	3	165.70	216.90	382.60	291.47	49.55	139148	370	457	84.71	129.27
52	326	Manufacture of structural stone goods, stone-ware, stone dressing and stone crushing	2	4.47	00.17	4.64	4.93	1.02	16436	50	56	3.17	4.52
53	329	Manufacture of miscellaneous non-metallic mineral products	9	205.83	273.03	478.86	466.80	91.13	186180	519	231	45.96	78.59
54	330	Iron & Steel Industries	12	416.21	169.93	586.14	776.03	1499.59	231252	615	884	72.50	145.02

55	331	Foundries for casting & forging of iron and steel	18	521.37	105.50	626.87	808.03	765.13	219548	547	780	60.90	108.34
56	332	Manufacture of ferro-alloys	2	58.83	8.44	67.27	68.11	4.76	30904	56	84	2.53	6.40
57	333 & 335	Aluminum manufacturing	9	319.49	818.28	1207.77	1250.97	38.46	415948	902	1154	165.49	276.30
58	336 & 339	Zinc manufacturing	3	338.23	293.63	631.86	1181.53	91.18	173206	397	477	47.62	94.50
59	340	Manufacture of fabricated metal products	54	380.51	698.43	1078.94	786.93	172.23	303883	874	1206	75.05	134.41
60	341	Manufacture of structural metal products	32	271.05	389.88	660.93	653.36	415.59	298943	722	1007	55.95	132.13
61	342 & 343	Manufacture of hand tools and general hardware	37	180.09	50.73	230.82	388.71	558.76	364626	933	1186	69.46	119.92
62	344	Motion picture production	2	56.93	39.10	96.03	74.15	72.56	19110	30	54	2.86	6.89
63	345	Manufacture of metal utensils cutting	18	47.59	53.83	101.42	129.47	66.73	146759	403	504	22.52	36.99
64	349	Manufacture of metal products except machinery and transport equipment not elsewhere classified like type founding	4	25.34	(-)	16.80	33.01	15.00	40026	32	48	2.06	4.13

## APPENDIX (Contd.)

## Annual Survey of Industries 1983-84 (Contd.)

Sl. Industry No.	(1)	(2)	(3)	Name of Industry	(4)	(5)	(6)	(7)	(8)	(9)	(10)	(11)	(12)	(13)	(14)	(15)	(16)	(17)	(18)	(19)	(20)	(21)	(22)	(23)
					No. of Unit	Fuels consumed	Materials consumed	Other Input	Total Input	Products	Other Output	Total Output	Depreciation	Value added										
49	320			Manufacture of structural clay products	285	566.69	410.55	117.71	1192.53	2669.39	0.61	2670.00	84.44	1393.03										
50	321 & 323			Manufacture of china ware and porcelain ware	12	123.54	88.33	5.77	237.33	341.03	23.95	364.98	25.15	82.50										
51	324			Manufacture of cement, lime & plaster	3	349.53	185.34	57.71	622.64	1052.63	8.64	1061.27	61.76	376.87										
52	326			Manufacture of structural stone goods, stoneware, stone dressing and stone crushing	2	00.32	7.56	0.51	8.78	14.77	Nil	14.77	0.55	5.44										
53	329			Manufacture of miscellaneous non-metallic mineral products	9	39.68	181.99	20.91	257.48	430.41	1.93	432.34	38.55	136.31										
54	330			Iron & Steel Industries	12	104.89	746.49	170.99	1052.46	1323.27	56.55	1379.82	63.04	264.32										
55	331			Foundries for casting & forging of iron and steel	18	75.39	410.74	24.88	535.17	730.99	12.39	743.38	16.00	192.21										



56	332	Manufacture of ferro-alloys	2	34.48	21.66	2.26	65.61	72.18	0.10	72.28	8.80	(-) <sup>1</sup> 2 13
57	333 & 335	Aluminium & manufacturing	9	378.71	1019.64	102.98	1552.24	1476.67	15.83	1492.50	38.05	(-) <sup>1</sup> 97.73
58	336 & 339	Zinc manufacturing	3	110.27	829.30	81.58	1097.41	1176.56	2.00	1178.56	50.00	31.15
59	340	Manufacture of fabricated metal products	34	18.36	1168.45	33.91	1328.84	1687.15	15.37	1702.52	45.68	328.00
60	341	Manufacture of structural metal products	32	21.62	415.03	202.58	690.60	333.03	374.23	707.26	37.72	(-) <sup>1</sup> 14.06
61	342 & 343	Manufacture of hand tools and general hardware	37	61.89	413.77	30.89	567.86	1120.76	64.69	1185.45	19.81	597.78
62	344	Motion picture production	2	1.92	62.67	0.45	68.63	90.44	Nil	90.44	3.61	18.20
63	345	Manufacture of metal utensils cutting	19	19.19	211.41	7.82	849.57	313.48	4.23	317.71	7.48	60.66
64	349	Manufacture of metal products except machinery and transport equipment not elsewhere classified like type funding	4	00.73	29.98	8.06	41.32	41.39	14.00	55.39	4.25	9.82

## Annual Survey of Industries 1983-84 (Contd.)

Sl. No.	Industry Code	Name of Industry	No. of Units (4)	Fixed Capital (5)	Working Capital (6)	Productive Capital (7)	Invested Capital (8)	Outstanding Loan (9)	Mandays worked (Nos.) (10)	All workers (Nos.) (11)	All Employees (Nos.) (12)	Wages to Workers (13)	Total emoluments (14)
65	350	Manufacture of Agricultural machinery and equipment	6	2.79	3.44	6.23	4.33	7.28	18958	48	66	3.67	5.52
66	351	Manufacture and repair of drills, coal cutting machines, earth moving, lifting and hoisting machine cranes, conveyers and road rollers and other heavy machinery and equipment used by construction and mining industries	2	6.63	00.56	7.19	7.17	..	16052	18	36	2.15	4.91
67	353	Industrial machinery for food and textiles	10	8.10	22.37	30.47	32.28	15.17	39452	106	135	8.49	11.43
68	354	Industrial machinery for other than food	19	53.72	16.02	69.74	39.36	47.03	98982	318	385	24.76	40.93

69	357 & 358	Manufacture of machine tools their parts and accessories	26	1204.67	1182.31	2386.98	2752.39	1164.17	960755	2141	3453	351.80	688.22
70	359	Manufacture and repair of non-electrical machinery	27	25.79	32.83	58.62	69.09	58.62	102917	345	410	22.73	32.06
71	360	Manufacture of electrical industrial machinery and apparatus	19	1254.55	(—)550.28	704.27	2370.12	704.30	830752	1942	2678	266.24	454.72
72	361	Manufacture of insulated wires and cables	7	590.37	580.11	1170.48	1381.84	1170.48	2774.20	922	1264	100.85	176.12
73	362 & 363	Manufacture of electrical apparatus	10	501.28	140.46	641.74	845.33	646.74	441854	919	1415	136.71	222.31
74	364	Manufacture of radio & T.V. transmitting and receiving sets etc.	3	383.89	1492.89	1876.79	1769.45	2084.93	314337	698	1069	81.42	173.44
75	366	Manufacture of electronic computers	4	711.58	55.48	767.06	1060.32	450.54	124265	278	408	9.18	81.18
76	367	Manufacture of electronic components & accessories	14	1303.62	812.93	2116.55	1781.20	2161.89	401816	832	1166	95.64	199.73

## Annual Survey of Industries 1983-84 (Contd.)

Sl. No.	Industry Code	Name of Industry	No. of Units	Fuels consumed	Materials consumed	Others Input	Total Input	Products Output	Other Output	Total output	Depreciation	Value added
(1)	(2)	(3)	(4)	(15)	(16)	(17)	(18)	(19)	(20)	(21)	(22)	(23)
65	350	Manufacture of Agricultural machinery and equipment	6	1.10	9.84	0.77	12.53	16.57	6.05	22.62	0.31	9.78
66	351	Manufacture and repair of drills, coal cutting machiners, earth moving, lifting and hoisting machine cranes, conveyers and road rollers and other heavy machinery and equipment used by construction and mining industries	2	0.16	2.17	0.95	3.39	Nil	5.37	5.37	0.34	1.64
67	353	Industrial machinery for food and textiles	10	3.43	39.24	1.30	46.70	57.93	1.63	59.56	0.70	12.16
68	354	Industrial machinery for other than food	19	7.42	94.12	7.09	116.89	228.67	8.52	237.19	6.06	114.24

69	357	Manufacture of machine tools their parts and accessories	26	69.60	1015.57	162.80	1337.96	2846.69	128.48	2975.17	157.55	1479.66
70	359	Manufacture and repair of non-electrical machinery	27	4.93	47.54	13.22	74.37	100.94	29.42	130.36	3.25	52.74
71	360	Manufacture of electrical industrial machinery and apparatus	19	38.65	1852.27	21.33	2061.04	2304.27	105.44	2409.71	93.96	254.71
72	361	Manufacture of insulated wires and cables	7	25.65	880.99	33.32	1030.08	841.53	140.84	982.37	50.37	(-)98.08
73	362 & 363	Manufacture of electrical apparatus	10	96.93	976.39	42.51	1226.20	1710.49	15.95	1726.44	49.95	450.26
74	364	Manufacture of radio & T.V. transmitting and receiving sets etc.	13	12.26	614.82	4.64	752.47	1002.63	123.72	1126.35	28.56	345.37
75	366	Manufacture of electronic computers	4	6.16	434.48	85.87	775.16	526.89	375.64	902.53	53.62	73.75
76	367	Manufacture of electronic components and accessories	14	17.66	446.58	16.31	542.25	940.15	18.87	959.02	134.60	282.17

APPENDIX (Contd.)

Annual Survey of Industries 1983-84 (Contd.)

Sl. No.	Industry	Name of Industry	No. of Units	Fixed Capital	Working Capital	Productive Capital	Invested Capital	Outstanding Loan	Mandays worked	All Workers (Nos.)	All employees (Nos.)	Wage to Workers	Total emoluments	(Rs. in lakhs)	
														(1)	(2)
77	369	Manufacture of electrical machinery apparatus appliances & supplies	3	28.13	(-)-31.26	(-)-3.13	85.46	116.68	28430	62	107	6.13	11.35		
78	370	Ship building and repairing	14	9029.84	1267.99	10297.83	14533.20	15878.00	749836	2314	2226	234.03	503.53		
79	374	Manufacture of motor vehicles and parts and													
375		Manufacture of motor cycles and scooters and parts	3	322.14	312.12	634.26	400.72	206.65	457613	1139	1397	140.36	181.60		
80	376	Manufacture of bicycles, cycle-rickshaws and parts	7	5.25	27.31	32.56	40.12	8.86	52450	153	177	10.66	14.51		
81	379	Manufacture of transport equipment	2	1.66	0.47	2.13	2.67	3.16	6104	18	22	1.04	1.30		
82	380	Manufacture of medical surgical & scientific equipment	8	498.27	842.51	1340.78	1138.72	1663.37	417934	974	1452	111.34	239.52		

83	381	Manufacture of photographic and optical goods (excluding photo-chemicals sensitised paper and film)	2	1.97	2.33	4.30	5.49	4.78	6176	18	22	0.93	1.18
84	382 & 387	Manufacture of watches and clocks and Manufacture of stationery articles like fountain pens, pencils, pens, pin, cushions, tags etc. not elsewhere mentioned	4	18.73	(—)94.02	(—)75.29	25.75	8.16	49174	131	218	8.22	12.72
85	389	Manufacture of miscellaneous products not elsewhere classified	3	1.50	2.22	3.72	3.16	1.33	26032	70	86	2.62	3.64
86	400	Generation and transmission of electric energy	7	44373.00	15350.18	59723.18	51695.31	45307.60	8724484	14541	23887	1842.21	3292.99
87	420	Water Supply	7	617.78	9.26	626.98	627.01	325.74	128317	322	228	36.00	41.02
88	910	Sanitation and similar services such as garbage and sewage disposal, operation of drainage systems and all other types of work connected with public health and sanitation	2	3.04	..	3.04	3.04	..	5292	12	14	1.57	1.94

## Annual Survey of Industries (Contd.)

Sl. Industry No.	(2)	(3)	No. of Unit	(4)	Fuels consumed.	(15)	Materials consumed	(16)	Other Input	(17)	Total Input	(18)	Products	(19)	Other Output	(20)	Total Output	(21)	Depreciation	(22)	Value added	(23)
77	369	Manufacture of electrical machinery, apparatus appliances & supplies	3	3	1.06	28.23	5.15	38.66	42.76	18.41	61.17	1.92	20.59									
78	370	Ship building and repairing	14	14	58.32	1219.39	306.28	1705.12	1433.53	595.83	2030.35	329.53	(-)	4.29								
79	374 & 375	Manufacture of motor vehicles and parts and manufacture of motor-cycles and scooters and parts	3	3	20.25	718.42	8.88	754.21	10.85	964.94	975.79	6.47	(-)	5.75								
80	376	Manufacture of bicycles, cycle-rickshaws and parts	7	7	1.28	62.84	1.43	71.71	95.55	0.04	95.59	0.58	23.30									
81.	379	Manufacture of transport equipment	2	2	0.24	4.40	0.95	6.29	5.23	3.20	8.43	0.08	2.06									
82	380	Manufacture of medical surgical & scientific equipment	8	8	12.26	789.90	47.60	926.81	1724.89	52.24	1777.13	45.89	803.43									



83	381	Manufacture of photographic and optical goods (excluding photo-chemicals, sensitised paper and film)	2	0.39	2.45	0.09	3.69	4.33	0.36	4.69	0.28	0.72
84	382 & 387	Manufacture of watches and clocks and manufacture of stationery articles like fountain pens, pencils, pens, pin, cushions, tags etc. not elsewhere mentioned	4	0.95	13.68	1.92	19.49	22.41	18.69	41.10	1.63	19.98
85	389	Manufacture of miscellaneous products not elsewhere classified	3	0.11	7.99	0.40	9.15	14.63	0.07	14.70	0.11	5.40
86	400	Generation and transmission of electric energy	7	147.09	681.87	907.47	2810.77	8021.65	1971.21	9992.86	1300.87	5881.21
87	420	Water supply	7	118.27	343.83	10.90	474.72	688.98	..	688.98	48.54	165.72
88	910	Sanitation and similar services such as garbage and sewage disposal, operation of drainage systems and all other types of work connected with public health and sanitation	2	6.50	..	0.38	6.90	..	8.78	8.78	0.32	1.56

## Annual Survey of Industries 1983-1984 (Contd.)

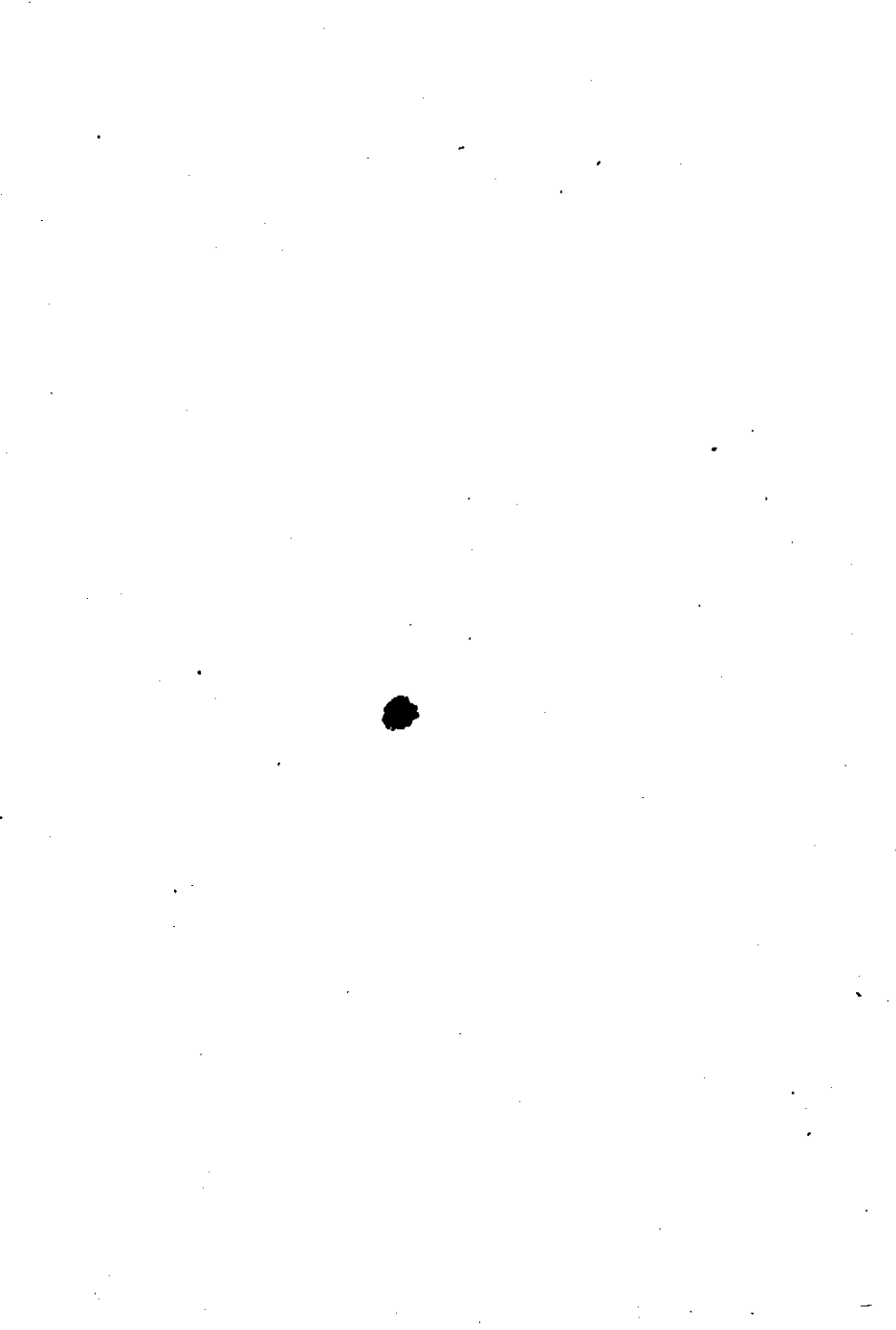
(Rs. in lakhs)

Sl. No.	(1)	(2)	(3)	(4)	(5)	(6)	(7)	(8)	(9)	(10)	(11)	(12)	(13)	(14)
Industry Code	Name of Industry	Name of Units	Fixed Capital	Working Capital	Productive Capital	Invested Capital	Outstanding Loan	Mandays Worked (Nos.)	All Workers (Nos.)	All Employees (Nos.)	Wages to Workers	Total emoluments		
89	972	Electrical repair shops	2	24.12	3.62	27.74	29.52	27.74	14046	34	46	1.88	3.50	
90	973	Repair of motor vehicles & motor cycles	89	334.81	134.33	469.14	452.44	20.60	1913955	4954	5819	665.70	851.01	
91	979	Repair of enterprises not elsewhere classified	4	25.65	15.57	41.22	41.22	..	355856	986	1177	119.65	165.01	
All Industries			3097	120604.68	51502.38	172107.06	177676.88	148167.60	61930722*	200757	240803	15618.14	22208.03	

## APPENDIX (Contd.)

## Annual Survey of Industries 1983-1984 (Contd.)

Sl. No.	Industry Code	Name of Industry	No. of Unit	Fuels consumed (15)	Materials consumed (16)	Others Input (17)	Total Input (18)	Products (19)	Other Output (20)	Total Output (21)	Depreciation added (22)	Value added (23)
89	972	Electrical repair shops	2	0.56	8.20	0.07	9.55	..	17.26	17.26	2.33	5.38
90	973	Repair of motor vehicles & motor cycles	89	75.92	95.08	21.59	227.59	(-)-0.91	1085.17	1084.86	28.03	329.24
91	979	Repair of enterprises not elsewhere classified	4	10.71	19.78	6.56	39.64	..	216.64	216.64	2.38	174.62
		All Industries	3097	9537.24	150612.26	7012.07	174375.60	219529.99	14749.23	234279.22	7806.02	520976.60



293

