

013-913/31



Sl no. 642

Government of Kerala



# District Hand Book Thiruvananthapuram

2007

Department of Economics & Statistics  
Kerala



013 - ~~918~~ 931

GOVERNMENT OF KERALA

DEPARTMENT OF ECONOMICS & STATISTICS

# DISTRICT HAND BOOK

THIRUVANANTHAPURAM

2007

3F-217

## **PREFACE**

*The Department of Economics & Statistics has been generating various statistics to cater the needs of Government and other agencies. In addition to state level data, Directorate of Economics and Statistics is also publishing data at District and Panchayath Level*

*This handbook is the second issue of Thiruvananthapuram district; the first one was released in. I appreciate all staff of the District, who has contributed in the collection of data, compilation, tabulation, data entry etc. to bring out such an informative book.*

*I hereby acknowledge the services of Sri. C.Madhavan, Assistant Director, Sri.N.Anslem, Research Officer Sri.P.Jayapalan, Research Assistant, Smt. Asha, U.D. Compiler and all other staff in the Publication Division under the guidance of Sri D. Rajan, Additional Director (General) and Smt. V.J Lathika, Joint Director to make this venture a success within the stipulated time.*

*I hope this publication will be useful to all the data users including planners, policy makers, Research workers and Academicians. Suggestions for improvements in its future issue are most welcome.*

**M.R. BALAKRISHNAN**  
Director



## ABOUT THE BOOK

*The Hand Book 2007 of Thiruvananthapuram District is an attempt from the department of Economics and Statistics to cater the need of Statistical information for local level planning. This publication is designed by giving importance to the sectors like Agriculture, Industries, Education, and Demography etc.*

*This publication is divided into eighteen chapters dealing with the important Statistical data of Thiruvananthapuram District and Kerala. We tried our best to give the up to date information in this Hand Book. I hope that this book will be a suitable reference to the Planners, Administrators, Researchers and Persons interested in Statistical data. The data presented in this Hand Book have been drawn from various Govt. publications and Offices.*

*This publication is an outcome of earnest effort rendered by Sri. R. Biju kumar, L.D. Compiler and Smt. L. I. Gloria, Research Assistant. I appreciate all the staff of this office for making this publication as a fruitful one.*

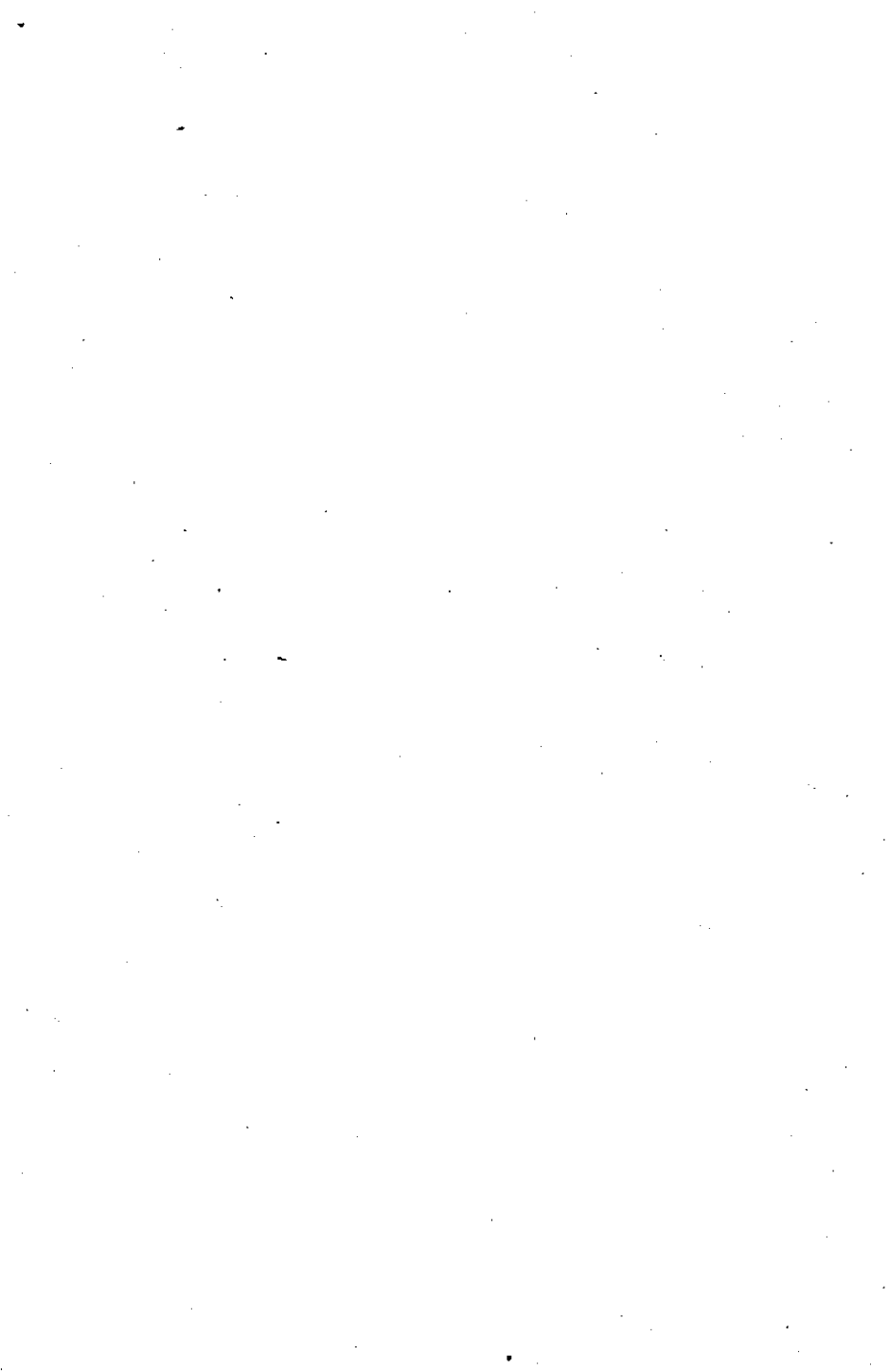
*Suggestions for improvement are welcome.*

Thiruvananthapuram

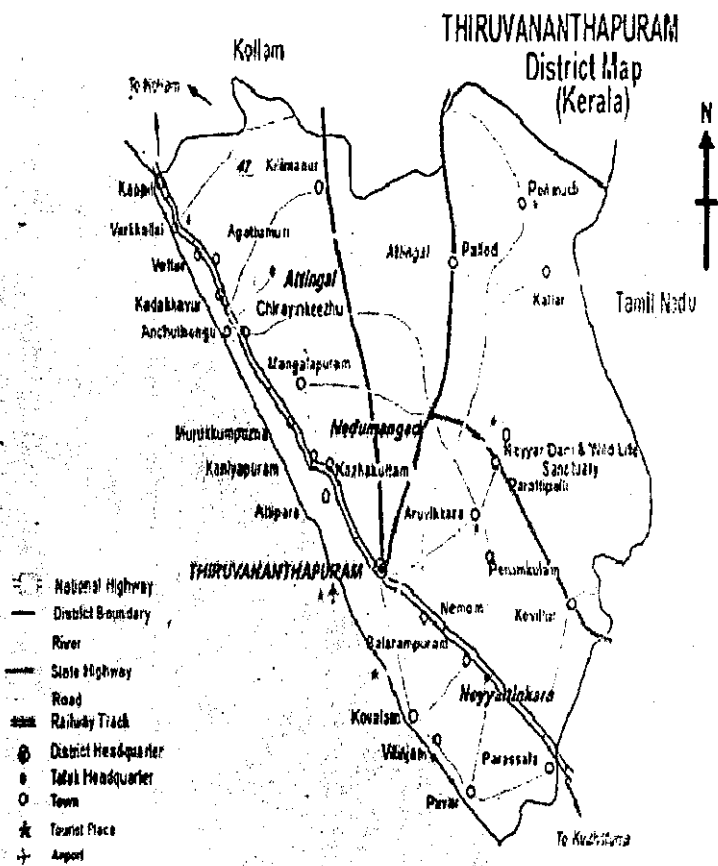
21-02-2008.

**P.V. BABU**

DEPUTY DIRECTOR







## CONTENTS

Table	Title	
<b>1. GENERAL</b>		
1.1	No. of Administrative/Development Units	10
1.2	Population and other Demographic Particulars 2001	11
1.3	Religion wise Population 2001	12
1.4	No. of Literates 2001	12
1.5	SC / ST Population 2001	12
1.6	Distribution of Population and work participation rate 2001	13
1.7	Distribution of Main Workers 2001	10
<b>2. AGRICULTURE</b>		
2.1	Land Utilization pattern 2004-05	14
2.2	Area under Crops 2004-05 & 2005-06	15
2.3	Production of Important Crops 2004-05& 2005-06	19
2.4	Estimated Area and Production of Rice Autumn 2004-05	21
2.5	Estimated Area and Production of Rice Winter 2004-05	22
2.6	Estimated Area and Production of Rice Summer 2004-05	23
2.7	Estimated Productivity of Crops, 2004-05 & 2005-06	24
2.8	Net Area Irrigated (Source wise), 2004-05&2005-06	25
2.9	Gross Area under Irrigation (Crop wise)	26
2.10	Physical Achievement under Sericulture	27
2.11	Soil Types	27

2.12	Range wise area of Forest 2006	30
2.13	Details of Krishi Bhavan and Allied Institutions	31
<b>3. ANIMAL HUSBANDRY 2005-06</b>		
3.1	Live Stock Population	32
3.2	Veterinary Institutions	32
3.3	Cattle Breeding Activities	33
3.4	No. of Anti rabies vaccination done	34
3.5	Dairy Development 2005-06	34
<b>4. FISHERIES</b>		
4.1	Distribution of Fishermen Population 2005-06	35
4.2	Details of fisheries	36
<b>5. INDUSTRIES</b>		
5.1	Details of Small Scale Industrial Units Registered during the year 2005- 06	37
5.2	Working Status of Small Scale Units	38
5.3	Category wise details of registered SSI Units	38
5.4	Handicraft Industrial Co-operative Societies	39
5.5	Handloom Co-operative Societies	39
5.6	Mechanized (Loom) Co-operative Societies	40
5.7	No. of Medium & Large Scale Industries	40
5.8	No. of Coir Co-operative Societies	41
5.9	Khadi & Village Industries	42
<b>6. EMPLOYMENT 2005</b>		
6.1	Employment as on 31.03.2005	43
6.2	Unemployment as on 31-03-2006	43
6.3	Employment trends	44
<b>7. TRANSPORT &amp; COMMUNICATION</b>		
7.1	Length of Roads	45

7.2	No. of Registered Motor Vehicles	45
7.3	Communication Facilities	46
<b>8. EDUCATION 2006-07</b>		
8.1	No. of Schools	47
8.2	No. of Schools other than State Syllabus	48
8.3	No. of Higher Secondary Schools	48
8.4	No. of Vocational Higher Secondary Schools	49
8.5	No. of Arts & Science Colleges	49
8.6	No. of Professional Colleges	49
8.7	No. of Industrial Training Institutions	51
8.8	Institutions under SC Development Department	52
8.9	Institutions under ST Development Department	52
<b>9. TOURISM</b>		
9.1	Important Tourist Places	53
9.2	Arrival of Tourist	53
9.3	Month wise Tourist arrivals	53
9.4	Country wise arrival of Tourist	54
<b>10. HEALTH AND FAMILY WELFARE</b>		
10.1	Medical Institutions – Allopathic	57
10.2	Medical Institutions – Ayurveda	58
10.3	Medical Institutions – Homoeopathy	58
10.4	Private Medical Institutions	59
10.5	Medical Institutions – ESI	60
<b>11. CO-OPERATION &amp; BANKING</b>		
11.1	Banks	61
11.2	Societies	61
11.3	District Credit Plan Performance	62

11.4	District Credit Plan allocation	63
11.5	Details of the key business indicators of Commercial Banks	64
11.6	District Credit Plan allocation (Sector wise)	65
11.7	District Credit Plan targets (Sector wise)	66
<b>12.ANNUAL PLAN</b>		
12.1	Expenditure on SCP & TSP 2004-05	68
12.2	Expenditure on SCP & TSP 2005-06	69
<b>13.STATE INCOME</b>		
13.1	Net District/State Domestic Product at Constant Price	70
13.2	Net District/State Domestic Product at Current Price	71
13.3	Gross Domestic Product at Constant Price	72
13.4	Gross Domestic Product at Current Price	73
13.5	Income & Expenditure 2003-04 (Provisional)	74
<b>14.PUBLIC DISTRIBUTION SYSTEM</b>		
14.1	Public Distribution details	75
14.2	Details of APL, BPL, AAY, ANP Cards	76
14.3	Details of Kerosene Dealers	77
14.4	Details of Population, Unit, Ration Cards, Permits & Ration Shops	77
14.5	Details of Ration Dealers	78
14.6	Requirement of Kerosene	78
14.7	Allotment, Lifting, and Off-take of Rice	79
<b>15. PORT &amp; HARBOUR</b>		
15.1	Vizhijham	80

<b>16. RURAL DEVELOPMENT</b>		
16.1	Swarnajayanthi Swarozgar Yojana	81
16.2	Indira Awas Yojana	81
16.3	Sampoorna Gramina Rozgar Yojana	81
16.4	Social Welfare Institutions	82
<b>17.POLICE</b>		
17.1	Police Offices	83
17.2	Details of Crimes	83
17.3	Details of Road Accidents.	84
17.4	Details of Two wheeler road accidents	84
17.5	Offences against women	84
17.6	Accidental death by natural causes	84
<b>18.MISCELLANEOUS</b>		
18.1	Social and Cultural Institutions 2005	85
18.2	Scheduled Caste & Scheduled Tribe Colonies	85
18.3	No. of seats reserved for women in LSGs	86
18.4	Water Resources	87
18.5	Irrigation work details - 2005-06	88
	Source of Data	89

## INTRODUCTION

Thiruvananthapuram, the southern most district of Kerala State is situated between north latitudes  $8^{\circ} 17'$  and  $8^{\circ} 54'$  and east longitudes  $76^{\circ} 4'$  and  $77^{\circ} 17'$ . The district stretches 78 kms along the shores of the Arabian sea on the west. Kollam district lies on the north, Thirunelveli and Kanyakumari districts of Tamil Nadu on the east and the south respectively.

Agriculture is the primary occupation of the people of the district. More than 12% of the total population depends on agriculture. Paddy, Coconut, Rubber, Tapioca etc. are the major crops cultivated in the district. The highland region on the east and north east comprises of the mountain of the western ghats and major cash crops Rubber, Pepper and Other Spices are grown in this region. Paddy, Tapioca, Spices and Cashew produces mainly in the mid land region lying between the Westernghats and the low lands, which in made up of small and tiny hills and valleys. The low land is comparatively narrow, comprising of rivers, deltas and seashore. This area is densely covered with coconut palms.

The district is blessed with rivers and lakes. Neyyar, Karamanayar, Mamom and Vamanapuram rivers are flowing through this district. Major backwaters are Veli, Kadinamkulam, Anchuthengu and Edava Nadakara Lakes.

Thiruvananthapuram is connected to the rest of the country by road, rail and air transport. NH 47 and MC Road are the major road in the district. Eighty two kilometers of railway line passes through the district. Domestic and International airlines services are also operated from the Thiruvananthapuram International Airport.

## 1. GENERAL

### 1.1 Number of Administrative/Development Units

	Particulars	District	State
1	Area (in Sq.Km.)	2192	38863
2	Number of Revenue Divisions	1	21
3	Number of Taluks	4	63
4	Revenue Villages	120	1453
5	Community Development Blocks	12	152
6	Municipalities	4	53
7	Municipal Wards	135	1756
8	Corporations	1	5
9	Corporation Divisions	86	316
10	Statutory Towns	5	60
11	Grama Panchayaths	78	999
12	Panchayath Wards	1332	16139
13	Assembly Seats	14	140
14	Parliament Seats	2	20



**1.2 Population and other Demographic Particulars – 2001**

<b>Population</b>	<b>District</b>	<b>State</b>
Male	1569917	15468614
Female	1664439	16372760
Total	3234356	31841374
Density (per sq.km)	1476	819
<b>Sex Ratio</b>		
General	1060	1058
Child	962	960
Child Population	368515	3793146
Percentage decadal growth rate	9.76	9.43
<b>Literacy Rate</b>		
Male	92.64	94.24
Female	86.14	87.72
Total	89.28	90.86
Number of Households	759382	6726356

**1.3 Religion Wise Population 2001**

Hindus	2202112	17883449
Muslims	431512	7863842
Christians	595563	6057427
Others	5169	36656
<b>Total</b>	<b>3234356</b>	<b>31841374</b>

**1.4 Number of Literates 2001**

	<i>District</i>	<i>State</i>
Male	1280412	12753602
Female	1278082	12732086
<b>Total</b>	<b>2558494</b>	<b>25485688</b>

**1.5 SC /ST Population 2001**

	<i>Scheduled Caste</i>		<i>Scheduled Tribe</i>	
	<i>District</i>	<i>State</i>	<i>District</i>	<i>State</i>
Male	178718	1525114	9890	180169
Female	192139	1598827	11003	184020
<b>Total</b>	<b>370857</b>	<b>3123941</b>	<b>20893</b>	<b>364189</b>

**1.6 Distribution of population and work participation rate-****2001**

	<b>District</b>	<b>State</b>
1 Population	3234356	31841374
2 Agricultural workers	135734	1620851
3 Cultivators	38423	724155
4 Household industry workers	35566	369667
5 Other workers	838212	7569214
6 Total workers	1047935	10283887
7 Non workers	2186421	21557487
8 Work participation rate	32.4	32.3
9 Total main Workers	818497	8236973

## 2. AGRICULTURE

### 2.1 Land Utilization Pattern (In hectore) 2005-06

Sl. No.	Particulars	2005-06	
		District	State
1	Total Geographical Area	218781	3886287
2	Forest	49861	1081509
3	Land put to non Agricultural area	24917	370322
4	Barren and Uncultivable land	350	26457
5	Permanent pastures & Other grazing land	9	274
6	Land under misc. tree crops	48	9526
7	Cultivable waste	422	66133
8	Fallow other than current fallow	436	45171
9	Current fallow	1545	70166
10	Net area sown	140414	2132483
11	Area sown more than once	39807	853244
12	Total cropped area	180221	2985727

## 2.2 Area Under Crops 2004-05 &amp; 2005-06(in hect.)

Sl No	Crops	2004-05		2005-06	
		District	State	District	State
1	<b>Paddy</b>				
	Autumn	2621	105349	2178	98256
	Winter	2573	148893	2513	155629
	Summer	2	35732	14	21857
	<b>Total</b>	<b>5196</b>	<b>289974</b>	<b>4705</b>	<b>275742</b>
2	Jowar	-	2566	0	2450
3	Ragi	-	1383	0	414
4	Other cereals	-	955	-	11
	<b>Total cereals / millets</b>	<b>5196</b>	<b>294878</b>	<b>4705</b>	<b>278617</b>
5	<b>Pulses including Tur</b>				
	Autumn	19	617	9	1333
	Winter	8	4476	277	6660
	Summer	27	3335	231	2569
	<b>Total</b>	<b>54</b>	<b>8428</b>	<b>517</b>	<b>10562</b>
	<b>Total Food Grains</b>	<b>5250</b>	<b>303306</b>	<b>5222</b>	<b>289179</b>
6	<b>Sugar Crops</b>				
	Sugar cane	3	1921	2	1222
	Palmyra	140	5932	130	5622
	<b>Spices and Condiments</b>				
7	Pepper	7320	237669	6980	237998

8	Ginger	103	9991	127	12226
9	Turmeric	59	2881	65	3384
10	Cardamom	-	41378	-	41367
11	Areca nut	1263	107572	1249	108590
12	Tamarind	1341	19564	1315	18747
13	Cloves	55	841	55	937
14	Nutmeg	33	10780	35	10984
15	Cinnamon	1	328	1	326
16	Garlic	-	306	0	65
	<b>Total Spices and Condiments</b>	<b>10287</b>	<b>431310</b>	<b>6448</b>	<b>437897</b>
17	<b>Fresh Fruits</b>				
a	Jack	6696	97536	6448	94902
b	Mango	5044	90631	4723	87965
c	Banana	2492	58866	2575	61400
d	Other plantains	5428	54612	5506	55222
e	Pineapple	305	12680	300	12775
f	Pappaya	1165	19305	1178	18895
g	Other fresh fruits	520	11054	515	10586
	<b>Total Fresh Fruits</b>	<b>21650</b>	<b>344684</b>	<b>21245</b>	<b>341745</b>
18	Dry Cashew fruits	2061	81547	1869	78285
	<b>Total Fruits</b>	<b>23711</b>	<b>426231</b>	<b>23114</b>	<b>420030</b>
19	Tubers	1607	28174	1483	26188
20	Sweet potato	31	836	45	711

21	<b>Tapioca</b>				
	Autumn	4964	15435	4381	14923
	Winter	6385	35731	6273	34651
	Summer	8484	37320	8965	40965
	<b>Tapioca Total</b>	<b>19833</b>	<b>88486</b>	<b>19619</b>	<b>90539</b>
	<b>VEGETABLES</b>				
22	Drumstick	2134	22049	2174	21138
23	Bitterguard	94	2214	47	2129
24	Snakeguard	157	1086	142	1153
25	Ladies Finger	25	1057	37	1134
26	Brinjal	46	655	80	965
27	Green Chillies	112	823	77	1231
28	Other vegetables	740	26837	458	19506
	<b>Total Vegetables</b>	<b>3037</b>	<b>55151</b>	<b>3037</b>	<b>47256</b>
	<b>Oil Seeds</b>				
29	Groundnut	0	1346	0	3299
30	Sesamum	-	883	0	600
31	Coconut	84073	899267	84078	897833
32	Others	38	2311	36	2525
	<b>Total</b>	<b>84111</b>	<b>903807</b>	<b>84114</b>	<b>904257</b>
	<b>Fibre, Drugs and Narcotics</b>				
33	Cotton	0	1472	0	2655
34	Betal leaves	30	891	24	780
35	Tobacco	-	40	0	43

36	Lemon grass	-	862	0	764
	<b>Total</b>	<b>30</b>	<b>3265</b>	<b>24</b>	<b>4242</b>
37	<b>Plantation crops</b>				
1	Tea	965	35040	965	35043
2	Coffee	-	84644	-	84644
3	Rubber	28512	480661	28920	494400
4	Cocoa	115	9339	108	9570
	<b>Total</b>	<b>29592</b>	<b>609684</b>	<b>29993</b>	<b>623657</b>
5	Fodder grass	130	3809	125	3811
6	Green manure crops	332	20106	325	19756
7	Other non-food crops	3171	112400	3106	111121
8	Medicinal plants	40	248	40	239
	<b>Total</b>	<b>3673</b>	<b>136563</b>	<b>3596</b>	<b>134927</b>
	<b>Total Cropped Area</b>	<b>181486</b>	<b>2996293</b>	<b>180221</b>	<b>2985727</b>



### 2.3 Production of Important Crops 2004-05 & 2005-06 (in Tones)

Sl. No.	Crop	2004-05		2005-06	
		District	State	District	State
1	Rice				
	Autumn	6423	241824	5232	212520
	Winter	5930	335529	5778	357734
	Summer	3	89752	24	59733
	Total	12356	667105	11034	629987
2	Jower	Nil	1309	-	1248
3	Ragi	Nil	1119	-	335
4	Other cereals	Nil	746	-	21
5	Sugar cane	0	15430	12	9165
6	Black pepper	2028	74980	1710	87605
7	Green chillies	102	775	70	1192
8	Pulses	89	8390	372	7940
9	Cured ginger	306	45305	298	56288
10	Curred turmeric	85	6244	134	8237
11	Groundnut	Nil	996	-	2441
12	Arecanut, betal nuts	547	110340	690	119309

13	Tamarind	4090	29945	4011	28777
14	Mango	32732	525326	30652	511131
15	Jack (nos. in million nuts)	34	348	36	350
16	Banana	15803	475371	17794	491823
17	Other plantain	45529	416115	46499	445333
18	Pineapple	1992	101912	1634	109325
19	Tapioca	467006	2400043	463702	2568284
20	Sweet potato	351	10013	510	9013
21	Pappaya	7678	87561	7763	85481
22	Drumstick	3435	23968	2711	18875
23	Sesamum	0	260	0.0	210
24	Coconut (Million nuts)	568	6001	665	6326
25	Cotton (No. of bales of 170kg each)	0	2370	-	3452
26	Nutmeg	9	2700	9	2746
27	Tobacco		223	-	69
28	Tea (includes Pathanamthitta dist)	113	49508	301	56384
29	Coffee	Nil	54300	-	60175
30	Rubber	37915	690778	44160	739225

31	Cocoa	39	5061	45	5362
32	Processed Cardamom	0	8616	-	9765
33	Raw cashew nuts	761	60584	1087	68262
34	Betal leaves	5367	157635	4294	137392
35	Clove (dry)	3	53	3	61
36	Garlic	-	5202	-	1105

### 2.4 Estimated Area and Production of Rice – autumn

(Area in Hectares, Production In Tonnes)

		2004-05		2005-06	
		District	State	District	State
1	<b>High Yielding</b>				
	Irrigated Area	538	20798	404	19665
	Production	1119	52337	845	40441
	Un Irrigated Area	2012	76761	16663	71335
	Production	5156	178353	4172	160308
	<b>Area – Total</b>	<b>2550</b>	<b>97559</b>	<b>2067</b>	<b>91000</b>
	<b>Production – Total</b>	<b>6275</b>	<b>230690</b>	<b>5017</b>	<b>200749</b>
2	<b>Local Varieties</b>				
	Irrigated Area -	70	893	111	123
	Production	147	1046	215	232
	Un Irrigated Area	1	6897	-	7133

Production	1	10088	-	11539
<b>Area -- Total</b>	<b>71</b>	<b>7790</b>	<b>2178</b>	<b>7256</b>
<b>Production -- Total</b>	<b>148</b>	<b>11134</b>	<b>5232</b>	<b>11771</b>

### 2.5 Estimated Area and Production of Rice – winter

(Area in Hectares, Production In Tonnes)

		2004-05		2005-06	
		District	State	District	State
1	<b>High Yielding</b>				
	Irrigated Area	559	105514	543	101427
	Production	1203	250535	1042	251886
	Un Irrigated Area	1604	10116	1497	9525
	Production	3880	22911	3574	20681
	<b>Area – Total</b>	<b>2163</b>	<b>115630</b>	<b>2040</b>	<b>110952</b>
	<b>Production – Total</b>	<b>5083</b>	<b>273446</b>	<b>4616</b>	<b>272567</b>
2	<b>Local Varieties</b>				
	Irrigated Area	85	20787	6	16584
	Production	95	39759	9	29065
	Un Irrigated Area	325	12476	467	28093
	Production	752	22324	1153	56102
	<b>Area – Total</b>	<b>410</b>	<b>33263</b>	<b>473</b>	<b>44677</b>
	<b>Production – Total</b>	<b>847</b>	<b>62083</b>	<b>1162</b>	<b>85167</b>

**2.6 Estimated Area and Production of Rice –summer***(Area in Hectares, Production In Tonnes)*

	2004-05		2005-06	
	District	State	District	State
<b>1 High Yielding</b>				
Irrigated Area	2	35184	14	21644
Production	3	88794	24	59381
Un Irrigated Area	0	122	0	18
Production	0	350	-	39
<b>Area – Total</b>	<b>2</b>	<b>35306</b>	<b>14</b>	<b>21662</b>
<b>Production – Total</b>	<b>3</b>	<b>89144</b>	<b>24</b>	<b>59420</b>
<b>2 Local Varieties</b>				
Area Irrigated	0	425	-	195
Production	0	607	-	313
Un Irrigated Area	0	1	-	0
Production	0	1	-	0
<b>Area – Total</b>	<b>0</b>	<b>426</b>	<b>0</b>	<b>195</b>
<b>Production – Total</b>	<b>0</b>	<b>608</b>	<b>0</b>	<b>313</b>

**2.7 Estimated Productivity of Crops 2004-05 & 2005-06***(In Kgs/hect.)*

		2004-05		2005-06	
		<i>District</i>	<i>State</i>	<i>District</i>	<i>State</i>
1	Paddy				
	Autumn	3730	3494	2402	2163
	Winter	3508	3430	2299	2299
	Summer	2111	3823	1714	2733
2	Coconut in Nos.	6756	6673	7909	7046
3	Arecanut	433	1026	552	1099
4	Tapioca	23547	27123	23635	28367
5	Raw Cashew nuts	369	743	582	872
6	Black pepper	277	316	245	368
7	Banana	6341	8076	6910	8010
8	Plantain	8388	7619	8445	8064
9	Jack (in nos.)	5078	3568	5583	3688
10	Cocoa	339	542	417	560
11	Sesamum	0	294	0	350

## 2.8 Net area irrigated 2004-05 & 2005-06 (Source-wise)

(Area in hectares)

Sl. No.	Source	2004-05		2005-06	
		District	State	District	State
1	Government canal	2063	101397	2471	104106
2	Private canal	196	4729	210	4949
3	Government tanks	274	2159	294	2193
4	Private tanks	54	41824	65	42813
5	Government wells	1	1175	2	1166
6	Private wells	536	107270	542	109216
7	Minor Lift irrigation	13	8591	12	8926
8	Other sources	350	110678	475	113854
9	Tube wells	0	15533	1	14227
	<b>Total</b>	<b>3487</b>	<b>393356</b>	<b>4072</b>	<b>401450</b>

**2.9 Gross area under irrigation 2004-05 & 2005-06  
(crop-wise) (area in hectares)**

Sl. No.	Name of crops	2004-05		2005-06	
		District	State	District	State
1	Paddy	1254	183601	1078	159638
2	Tubers	129	2253	135	2705
3	Vegetables	678	14274	902	15197
4	Coconut	980	157768	1947	159912
5	Arecanut	6	36858	10	32727
6	Cloves	50	540	42	543
7	Nutmug	13	5745	14	6269
8	Other spices & Condiments	58	3403	57	3791
9	Banana	2405	30265	1460	57660
10	Betel leaves	30	891	20	716
11	Sugarcane	0	1630	0	1032
12	Other crops	1190	18163	1352	19876



## 2.10 Physical Achievement under Sericulture 2005-06

Sl. No	Name of crops	2004-2005	
		District	State
1	Mulberry Cultivation (Acres)	20.00	365
2	No: Farmers	27	546
3	Dfls Supplied(Nos:)	2175	210155
4	Cocoon Production (in Metric Ton)	460.90	92
5	Silk Production (in Metric Ton)	Nil	Nil

## 2.11 Soil Types

Sl. No	Land Form	Major Soils	Area in hectare	Existing Crops	Addition al Crops
<b>I</b>	<b>Low Land</b>				
1	Poovar	Red Soil	1006	Coconut based mixed cropping	
2	Kazakk uttom	Laterite Soil	6474.58	Coconut based mixed cropping	
3	Chirayi nkil	Laterite Soil	1005.42	Coconut based mixed cropping	
4	Karama na	Red Soil	9402	Coconut based mixed cropping	
5	Amarav ila	Laterite Soil	1989	Paddy, Pulses, Vegetables	

6	Korani	Laterite Soil	1705	Paddy, Pulses, Vegetable
7	Sreeka riyam	Laterite Soil	4946	Paddy, Pulses, Vegetable
8	Mudak kal	Laterite Soil	17007	Coconut based mixed cropping
<b>II</b>	<b>Mid Land</b>			
1	Nanch allur	Laterite Soil	5465	Coconut based mixed cropping
2	Varkala	Laterite Soil	4811	Coconut based mixed cropping
3	Cherun niyoor	Laterite Soil	2623	Coconut based mixed cropping
4	Kuttich al	Laterite Soil	853	Paddy Pulses
5	Vemba yam	Laterite Soil	3653	Paddy Pulses
6	Marukil	Laterite Soil	590	Paddy Pulses
7	Vizhinj an	Laterite Soil	7542	Coconut based mixed Cropping

8	Neyyati nkara	Laterite Soil	6318	Coconut based mixed Cropping
9	Pallich al	Laterite Soil	5006	Coconut based mixed Cropping
10	Vellay ani	Laterite Soil	3301	Coconut based mixed Cropping
11	Trivan dram	Laterite Soil	20330	Coconut based mixed Cropping
12	Thonn akkal	Laterite Soil	8722	Coconut based mixed Cropping
13	Pangap para	Laterite Soil	3729	Coconut based mixed Cropping
14	Mukku nni	HillSoil	1989	Rubber
15	Nedum angad	HillSoil	35479	Rubber & Coconut based cropping

### III Mid up land

1	Vilappil	Laterite Soil	2973	Coconut based mixed Cropping
2	Palode	HillSoil	7126	Rubber

3	Koditu kki	HillSoil	4744	Rubber
4	Kallar	HillSoil	17600	Rubber
5	Chemp kathipa ra	HillSoil	9750	Rubber

#### IV Up Land

Kottur	HillSoil	6405	Tea, Forest,Grass land.
--------	----------	------	-------------------------------

Source: Soil Survey

### 2.12 Range-Wise Area of Forest (in hectare)

<i>Name of Division (Range Wise)</i>	<i>Reserve Forerst</i>	<i>Vested forest</i>	<i>Total</i>
Palode	101.084	59.243	160.327
Paruthipally	40.49	92.045	132.535
Kulathuppuzha	217.55	87.984	305.534
Palode & Kulathuppuzha	-	106.541	106.541
<b>TOTAL</b>	<b>359.124</b>	<b>345.813</b>	<b>704.937</b>

### 2.13 Details of Krishi bhavan & allied institutions

No:of Krihibhavans 88 Nos

#### **Other Istitutions**

District Agricultural Farm , Bhavana Nursery- Peringamala

Parasite Breeding Station - Kunnumpuram

State Seed Farm- Ulloor , Chirayinkeezhu

Coconut Nursery- Valiyathura, Kazhakkuttam

Soil Testing Labouratory, Seed Testing Labouratory-  
Parottukoanm

Mobile Soil Testing Labouratory- Parottukonam

Fertilizer Quality Control Labouratory-Nalanchira

Pesticide Testing Lab:-Nalanchira

Bio-Technology & Model Florie Cultural, Regional Agricultural  
Training Centre-Kazhakkuttam

State Bio-Fertilizer Labouratoury - Parottukonam

Aagmark Graiding Labouratory - Venpalavattom

Research Testing Training Centre – Vellayani

Agricultural Urban Wholesale Market –Anayara

Agricultural Rural Wholesale Market - Nedumangad

### 3. ANIMAL HUSBANDRY 2005-06

#### 3.1 Live stock Population

1. No. of crossbred cattle	99696
2. No. of Indigenous cattle	1949
3. Total no: of cattle	146972
4. No: of buffalos	3270
5. No: of Goats	146301
6. No. of Fowls	1013219
7. No: of Ducks	7402
8. No. of Sheep	293
9. No. of Pigs	1890

#### 3.2 Veterinary Institution

1. No: of Veterinary Hospital	23
2. District Veterinary Centre	1
3. No: of Veterinary Dispensaries	71
4. ICDP Sub Centres	144

5. RAIC	5
6. Veterinary Poly Clinic	2
7. Buff allow breeding Farm	Nil
8. Regional Poultry Farm	1
9. Clinical Lab	1
10. Mobile Veterinary Hospital	1
11. Calf Feed Subsidy Scheme	10
12. RP Check Post	1
13. RP Vigilance Unit	Nil
14. ICDP	1
15. DFZ Unit	1

### 3.3 Cattle Breeding Activities

	<i>Cattle</i>	<i>Buffalo</i>
1. No: A.I done	116155	2031
2. Follow up done	67745	495
3. Pregnant	39395	310

**3.4 Number of Anti rabbis vaccination done**

Name of Animal	Prophylactic vaccination	Post inflectional vaccination	Death due to Rabies		Total Deaths
			Before Vaccination	After Vaccination	
1. Cattle	139	208	8	1	9
2. Buffaloes	2	3	4	0	4
3. Goats	121	492	6	2	8
4. Dogs	8829	1286	10	0	10
5. Others	5	2	0	0	0

**3.5 Dairy Development 2005-06**

1. No. of Dairy co-op societies	283
2. Milk collected during the year 05-06 (in lr)	38585121
3. Value (Rs )	-
4. No. of diary Production Units	1
5. Milk used for milk product during the year 05-06	3316405
6. Sales during The year (Rs).	1050823186
7. Amount Expended for Development Schemes (Rs )	3147000



## 4. FISHERIES

### 4.1 Distribution of Fishermen Population 2005-2006

<b>Marine</b>	<b>District</b>	<b>State</b>
Male	67070	331436
Female	59258	296912
Children	52683	217740
<b>Total</b>	<b>179011</b>	<b>846088</b>
<b>Inland</b>		
Male	462	98685
Female	535	94915
Children	457	60394
<b>Total</b>	<b>1454</b>	<b>253994</b>
<b>Marine &amp; Inland Total</b>	<b>180465</b>	<b>1100082</b>

### 4.2 Details of fisheries

Particulars	District
Length of cost line(Kms)	78
Number of Fisher man villages	46
Marine	42
Inland	4
Number of Fisheries Co-operative Societies	98
Number of Domestic Fish Markets	325
Annual Fish Production (in Ton.)2004-05	50368
Marine	1516
Inland	-
Number of beneficiaries of saving-cum-relief scheme2004-05	
Marine	22712
Inland	-

## 5. INDUSTRIES 2005-06

### 5.1 Details of Small Scale Industrial Units Registered during the year 2005- 06

1. No. of SSI Units Promoted by	
a. SC/ST	4/1
b. Women	216
c. Others	361
<b>Total</b>	<b>577</b>
2. No: of SSI Tiny Units	474
3. No: of SSBE Units	88
4. Investment (Rs.in lakhs)	2115.61
5. Value of goods and services produced (Rs.in lakhs)	8689.38
6. Employment provided( Nos.)	3309
7. No: of Units assisted with Subsidy	22
8. Amount of Subsidy (in lakhs)	72.66
9. No: of units assisted with Margin Money	46
10. Amount of Margin money (in lakhs)	5499825

**5.2 Working Status of Small Scale Units as on 2005-06**

<b>Total No: of Units</b>	<b>30428</b>
No. of Units identified as Sick	9
" Registered	2
" Revived	1

**5.3 Category-wise details of Regd: SSI Units as on 2005-06**

1. Agricultural based	-
2. Wood based	2
3. Animal product based	-
4. Textile based	100
5. DTP/IT based	70
6. Engineering	46
7. Construction equipment based	-
8. Clay based	-
9. Traditional based	-
10. Repair & Service	29
11. Food Processing Units	107
12. Miscellaneous	223
<b>Total</b>	<b>577</b>

### 5.4 Handicraft Industrial Co-operative Societies as on 2005-.2006

Promoted by SC/ST	-
" Women	-
" Others	3
<b>Total</b>	<b>3</b>

### 5.5 Handloom Co-operative Societies as on 31.03.06

1. No: of Societies	345
2. Liquidated	64
3. Dormant	23
4. Working	258
5. Weavers	24832

**5.6 Mechanized (loom) Co-op: Societies as on  
2005-2006**

1. No: of Societies	2
2. Members	50

**5.7 No. of Medium and Large Scale Industries as on  
2005-.2006**

1. Central Govt:	2
2. State Govt:	14
3. Co-op: Sector	2
4. Pvt:Sector	72
<b>Total</b>	<b>90</b>

**5.8 No. of Coir Co-operative societies as on 2005-2006**

1. Working	48
2. Dormant	16
3. Liquidated (Under liquidation)	30
4. New societies not yet started	1
<b>Total</b>	<b>95</b>
5. No. of Regstd: Workers	34855
6. No. of Regstd: Members	36415
Male	11055
Female	23800
7. SC	9315
8. ST	Nil
9. No. of Workers employed during 05-06	2760
10. No. of Mats & Mating Societies	3
11. Working	2
12. No. of Rgstd: Workers	287
Male	157
Female	130
13. SC	98
14. No:of Defiburing Mills Societies	2
15. No:of Pvt: Units	4

<b>Production of Coir</b>	
16. Through Traditional Rat(in qtls)	4888.8
17. Mechanised (in qtls)	309
<b>Total</b>	<b>5197.8</b>
18. Total Value (in lakhs)	185.61

### **5.9 Khadi & Village Industries as on 2005-2006**

1. No:of units assisted with Margin Money	86
2. Amount allotted (lakhs)	113.53
3. Employment provided( No.)	1361
4. Total No: of Spinning Units	22
5. No: of Workers	198
6. Production of Yarn( No: of Hanks)	317023
7. Value of goods purchased (Rs.)	1303986
8. Total No: of Weaving Units	12
9. No: of Workers	226
10. Production of cloth(in sq.m)	50050
11. Value of goods produced (Rs.)	3025376
12. Sales during 05-06(Rs.in lakhs)	85.87
13. No: of Readymade Garment Units	-



## 6. EMPLOYMENT

### 6.1 Employment as on 31.03.2005

1. No: of persons employed on Public Sector	136674
2. No: of persons employed on Private Sector	46814
<b>Total</b>	<b>183488</b>
3. Central Govt:	27268
4. State Govt:	55330
5. Central Govt:(Q)	19331
6. State Govt:(Q)	31202
7. Local Body	5726
<b>Total</b>	<b>322345</b>

### 6.2 Unemployment as on 31.3.2006

1. No. of candidates Registered during the reporting year	563178
2. Total Work Seekers as on 31.3.06	563178
3. Total No: of SC Work Seekers	33634
4. Placement given to SC during the year	NA
5. No. of ST candidates registered	NA
6. Total No: of ST Work Seekers	258

7. Placement given to ST during the year	NA
8. No: of Physically Handicapped candidates registered	NA
9. Total No. of PH work seekers	2727
10. Placement given to PH work seekers during 2004-05	NA

### 6.3 Employment Trends

No. of persons employed in Public & Private Sector

Year	2001	2002	2003	2004	2005	2006
District	179327	182508	185154	184978	183649	183878
State	1241694	1214003	1211399	1204423	1139773	1101530

## 7. TRANSPORT & COMMUNICATION

### 7.1 Length of Roads in Km as on 31.3.2006

1. National highway	
2. State highway	181
3. PWD Roads	2256
4. Village Roads	0
5. Railway track	82
6. Water Transport	8.1

### 7.2 Number of Registered Motor Vehicles as on 31.03.2006

1. Two Wheelers	320980
2. Passenger Vehicles (non transport)	134785
a Contract Carriages / Omni Bus	12653
b Cars	68321
c Taxi's	13324
d Jeep	7167
e Auto Rickshaws	33308
f Motorised Cycles	12
3. Passenger Vehicles (transport)	7710
4. Goods carrier	23727
5. Tractor/ Trailer/Triller	472
6. Others	2632
<b>Total</b>	<b>490306</b>

**7.3 Communication Facilities**

1.Head Post Offices	16
2.Sub Post Offices	141
3.E.D.Sub P.O's	67
4. E.D.branch P.O's	73
5.Letter boxes	1312
5. Teletraffic Offices	30
6. Telephone Exchanges	88
7. Public Telephone Booths Local calls only	2262

## 8. EDUCATION

### 8.1 Number of Schools 2006 - 07

<b>High schools (Including HSS&amp;VHSS)</b>	<b>District</b>	<b>State</b>
Govt:	119	998
Pvt:Aided	95	1426
Pvt:Un Aided	42	366
<b>Total</b>	<b>256</b>	<b>2790</b>
<b>U.P.Schools</b>		
Govt:	98	954
Pvt: Aided	101	1870
Pvt:Un Aided	27	213
<b>Total</b>	<b>226</b>	<b>3037</b>
<b>L. P. Schools</b>		
Govt:	299	2548
Pvt: Aided	181	3992
Pvt: Un Aided	27	277
<b>Total</b>	<b>507</b>	<b>6817</b>
<b>HS+U.P.S+L.P.S</b>		
Govt:	516	4500
Pvt:Aided	377	7288
Pvt:Un Aided	96	856
<b>Total</b>	<b>989</b>	<b>12644</b>

**Teachers Training Institute**

Govt:	4	38
Aided	5	64
<b>Un Aided</b>	16	100
<b>Total</b>	25	202
THSS	2	NA
Special School	3	

**8.2 No. of Schools other than State Syllabus**

	<b>District</b>	<b>State</b>
CBSE	43	587
ICSE	11	92
Kendriya Vidyalaya	4	26
Jawahar Navodaya	1	14

**8.3 No. of Higher Secondary Schools 2006 – 07**

Govt:	73	702
Aided	46	525
Unaided	44	439
<b>Total</b>	<b>163</b>	<b>1666</b>

**8.4 No: of Vocational Higher Secondary School  
(Government)**

Government.	30	247
Aided	11	128
<b>Total</b>	<b>41</b>	<b>375</b>

**8.5 No: of Arts & Science Colleges 2006- 07**

Govt:	8	38
Aided	12	148
<b>Total</b>	<b>20</b>	<b>186</b>

**8.6 Professional Colleges**

<b>Engineering colleges</b>	<b>District</b>	<b>State</b>
Govt. Aided	2	14
Self-financing	13	70
<b>Total</b>	<b>15</b>	<b>84</b>
<b>Medical colleges</b>		
Govt.	1	5

Self financing	2	9
<b>Dental colleges</b>		
Govt.	1	3
Self financing	1	8
<b>Total</b>	<b>2</b>	<b>11</b>
<b>B.Sc MLT</b>		
Govt.	-	1
Self financing	-	1
<b>Pharmacy colleges</b>		
Govt.	1	2
Self financing	2	19
<b>B.Sc Nursing</b>		
Govt.	1	3
Self financing	-	19
<b>Homeo Medical Colleges</b>		
Govt/Aided	1	5



<b>Ayurveda colleges</b>		
Govt/Aided	1	5
Self financing	1	7
<b>B.Sc Agri.</b>		
Govt.		3
<b>B.Vsc &amp; AH</b>		
Govt.		2
<b>B.sc in Forestry</b>		
Govt.		1
<b>Batchelor of Agri. Eng.&amp; Technology</b>		
Govt.	1	1
Govt.		1

**8.7 No. of industrial training institutions as on 2006-07**

	<i>District</i>	<i>State</i>
Govt : ITI	5	34
Pvt:ITC	49	392
<b>Total</b>	<b>54</b>	<b>416</b>

**8.8 Institutions under SC Development Department as  
on 2006-07**

	<b>No</b>	<b>Students</b>
Trainig Institutes	9	95
Model Residential Schools	Nil	Nil
Nurseries	16	189
Pre-mâtric Hostels	6	197
Post Metric Hostels	4	88
Subsidised Hostels	1	60
Sports Hostel	1	175
Production cum training centre	Nil	Nil
Pre Examination training centre	1	80
Civil Service Examination Trg:Ctr:	1	30

**8.9 Institutions under ST Development Department as  
on 2006-07**

	<b>District</b>
Ayurveda Dispensary	2
Balavadies	2
Pre-matric Hostels	2
Training Centres	4
ANM Centers	1
Model Residential Schools	1

## 9. TOURISM

### 9.1 Important Tourist Places

Secretariat, Sri Padmanabha Swami Temple, kudiramalika, Tvpn Museum, The Napier Museum, Sri Chitra Art Gallery, Zoological park, The Kanakakkunu Palace, Science and Technology Museum, Shanghumugham Beach, Observatory, Veli Tourist Village, Kovalam Beach, Varkala, Ponnudi hill Resort.

### 9.2 Arrival of Tourist During 2006

	District	State
No: Foreign tourists.	151578	428534
No: of Domestic Tourists	866712	6271724

### 9.3 Month wise Tourists Arrivals – 2006

Month	Domestic		Foreign	
	District	State	District	State
January	81618	532748	19746	58858
February	72781	469363	18135	56530
March	65364	457435	13591	39584
April	62094	522408	12123	32377
May	80700	610241	9651	20470

June	68967	467879	7981	16209
July	68011	478701	9056	23578
August	67603	511198	7524	28821
September	66766	517659	8041	21888
October	75359	543876	9444	28681
November	76191	556297	15597	44421
December	81258	603919	20689	57117
<b>Total 2006</b>	<b>866712</b>	<b>6271724</b>	<b>151578</b>	<b>428534</b>
Total 2005	837211	5946423	119940	346499
<b>Variation over 2005%</b>	<b>3.52</b>	<b>5.47</b>	<b>26.28</b>	<b>23.68</b>

#### 9.4 Country-Wise Arrivals of Tourists 2005

	Country	District	State
1.	Australia	2375	9962
2.	Austria	1092	3360
3.	Bahrain	849	3085
4.	Bangladesh	991	1520
5.	Belgium	854	4827
6.	Brazil	220	634
7.	Canada	1910	7527
8.	China	361	1479

9.	Czechoslovakia	111	322
10.	Denmark	819	3060
11.	France	4762	27791
12.	Germany	7524	22861
13.	Iran	171	488
14.	Israel	494	3161
15.	Italy	3075	10020
16.	Japan	2542	6055
17.	Kenya	129	710
18.	Korea	479	1407
19.	Kuwait	688	1992
20.	Malaysia	855	2939
21.	Maldives	31347	32967
22.	Mexico	86	227
23.	Nepal	662	780
24.	Netherlands	1329	7554
25.	Newzealand	463	2222
26.	Oman	980	2126
27.	Pakistan	9	93
28.	Phillippines	804	1041
29.	Quatar	94	2502
30.	Russia	3066	4331

	<b>Country</b>	<b>District</b>	<b>State</b>
31.	Soudi Arabia	200	4783
32.	Singapore	1012	3094
33.	South Africa	774	4062
34.	Spain	705	4595
35.	Srilanka	2654	4741
36.	Sweedan	1494	4593
37.	Switzerland	2574	8742
38.	Thailand	265	533
39.	U.A.E.	287	3734
40.	U.K:	25172	70423
41.	U.S.A.	6926	27453
42.	Yugoslaya	69	103
43.	Others	8667	42604
<b>44.</b>	<b>Total</b>	<b>119940</b>	<b>346499</b>

## 10. HEALTH AND FAMILY WELFARE 2005-06

### 10.1 Medical Institutions – Allopathic

Hospital (Govt. CHC)	Nos.
No: 18	Dist Hospital Taluk Hospital -2 Govt. Hospital -16
Beds	3752
Doctors	247
<b>Dispensaries(Govt.)</b>	
Nos:	9
Beds	34
Doctors	11
<b>Primary health Centres</b>	
Nos:	77
Beds	490
Doctors	114
<b>Community Health Centres</b>	
No:	10
Beds	528
Doctors	61
<b>Family Welfare Centres</b>	475

**10.2 Medical Institutions - Ayurveda**

<b>Hospital (Govt.)</b>	<b>District</b>
No:	14
Beds	285
Doctors	33
<b>Dispensaries (Govt.)</b>	
Nos:	65
Doctors	65

**10.3 Medical Institutions – Homoeopathy**

<b>Hospital(Govt.)</b>	<b>District</b>
No:	4
Beds 25 each	185
Doctors	12
<b>Dispensaries (Govt.)</b>	
Nos:	52
Beds	52
Doctors	NA



**10.4 Private Medical Institutions (2004-05)**

<i>System of medicines</i>	<i>No. Institutions</i>	<i>No. of beds</i>	<i>No. of I.P</i>	<i>No. of O.P</i>
1. Allopathy	480	7258	305364	3630364 4
2. Ayurveda	246	638	8760	555348
3. Homoeo	254	144	7512	626736
4. Unani	4	5	300	2400
5. Sidha	39	160	3036	72312
6. Marma	5	60	840	6540
7. Naturopathy	3	6	120	7248
8. Others	29	70	1356	24096
<b>Total</b>	<b>1060</b>	<b>8341</b>	<b>327288</b>	<b>37598324</b>

**10.5 E .S .I. Medical Institutions**

Hospitals	1
1. No. of Beds	128
2. No. of Doctors	27
3. Total no. of patients admitted 2004-2005	44928
4. No. of Dispensaries	11
5. No. of Doctors	25
6. No. of Homeo units	1
7. No. of Doctors	1
8. No. of Ayurveda units	1
9. No. of Doctors	1
10. No. of ESI laborers included in ESI scheme 2004-2005	135069

## 11. CO-OPERATIONS AND BANKING

### 11.1 Banks 2006

1. State bank of India and associates	110
2. Nationalized Commercial Banks	156
3. Scheduled Commercial Bank	95
4. Gramin Bank	-
5. Dist: Co-op: Bank & branches	65
6. Urban Co-op:Bank	-
7. State Co-op:Bank	9
8. Primary Co-op Agri & Rural Devpt: Bank	(KSCARDB)- 4

### 11.2 Societies 2006

1. Primary Agri credit societies	108
2. SC/ST Co-op: societies	127
3. Employees Co-op: societies	204
4. Marketing Co-op: societies	0
5. Wholesale traders consumer Co-op: societies	1
6. Primary Consumer co-op: Societies	140
7. School/College Co-op: societies	337
8. Housing Co-op:societies(Primary)	76
9. Labour Contract Co-op:societies	75
10. Motor Transport Co-op:societies	13

11.	Vanitha Co-op:societies	111
12.	Autowrisha Co-op:societies	5
13.	TourismCo-op:societies	-
14.	Hospital Co-op:societies	8
15.	Education Co-op:Societies	9
16.	Printing Co-op:societies	10
17.	Other Co-op: Societies	334

### 11.3 District Credit Plan-Performance

(Rs. in Lakhs)

	Target	Achieve	Achvmt:%
		<b>2003-04</b>	
Farm-Sector	30652	36334	118%
Non Farm Sector	10848	8749	80%
Other Priority Sector	52244	76655	146%
Total Priority sector	93744	121738	130%
		<b>2004-05</b>	
Farm Sector	58651	56686	97%
Non Farm Sector	11702	10747	92%
Other Priority Sector	69045	115429	167%
Total Priority sector	139398	182863	131%

	2005-06		
Farm Sector	69896	85497	122%
Non Farm Sector	15242	5645	37%
Other Priority Sector	92379	173732	188%
Total Priority Sector	177517	264874	149%

**11.4 District Credit Plan Allocation 2005-06, 2006-07 at a Glance (Rs. in Crores)**

Sector	2005-06	2006-07
1. Agriculture	698.96	793.74
2. Allied Activities	-	-
3. Non Farm Sector	152.42	177.50
4. Other Priority Sector	923.79	1215.52
5. Non Priority Sector	967.40	996.67
<b>Total</b>	<b>2742.57</b>	<b>3183.43</b>

**11.5 Details of the Key Business Indicators of Commercial Bank (Rs.in Lakhs)**

	<i>March-04</i>	<i>Mar-05</i>	<i>Mar-06</i>
1. Total Deposits	998029	1048468	1199848
2. Total Advance	629162	789991	900807
3. CD ratio	63	75	75
4. PS Advance	189377	301467	388232
5. % of PS to Total Adv.	30	38	43
6. Total Advance to Farm Sector	52718	84750	108556
7. % of FS to Tot.Adv.	30	38	43
8. % of FS to PS.Adv.	8	11	12
9. Adv to NFS	22359	28816	43490
10. % of NFS to Tot.Adv.	4	4	5
11. % of NFS to PS.Adv.	12	10	11
12. Adv to OPS	112300	187901	236186
13. % of OPS to Tot.Adv.	18	24	26
14. % of OPS to PS.Adv.	59	62	61
15. Adv to DRI	880	1064	1363
16. % of DRI to Tot.Adv.	<1	<1	<1

17. % of DRI to PS.Adv.	<1	<1	<1
18. Adv to Weaker Section	23892	38372	64194
19. % of WS to Tot.Adv.	4	5	7
20. % of WS to PS.Adv.	13	13	17

**11.6 District Credit Plan 2006-07 – Allocation for Various Sectors (Amt. in Crores)**

<b>SECTOR</b>	<b>2005-06 (Target)</b>	<b>2006-07 (Target)</b>	<b>INC./DEC.(%)</b>
Agriculture	6989642	7937521	13%
Allied Activities	419434	590336	40%
Total Agri.	7409076	8527857	15%
Non Farm Sector	1524239	1775015	16%
Other Priority Sector	9237904	12155203	32%
Total Priority Sector	17751785	21867739	23%
Non Priority Sector	9674072	9966692	3%
<b>Total</b>	<b>27425857</b>	<b>31834431</b>	<b>16%</b>

**11.7 Sector Wise Target Under District Credit Plan  
2006-07**

SECTOR	TARGET	
	2005-2006	2006-2007
<b>I. AGRICULTURE(TL+CL)</b>	6989642	7937521
A. Term Loan	1083906	1214113
Minor irrigation	162616	229054
Land Development	229881	269520
Farm Merchanisation	93164	39593
Plantation and Horticulture	453695	510660
Others	144550	165286
B. Crop Loans	5486302	6133072
SECTOR	TARGET	
	2005-2006	2006-2007
<b>II. ALLIED ACTIVITIES</b>	419434	590336
Dairy	263984	356220
Poultry	48361	40290
Sheep & Goat	29257	37735
Fisheries	69677	141734
Farm Forestry	535	4800
Cold Storage/Storage Tank	7620	9557



FARM SECTOR(I+II)	7409076	8527857
III. NON FARM SECTOR	1524239	1775015
Handloom	472972	421655
Tiny Sector	67502	100346
Village Artisans	74345	54905
Rural Artisans	34333	44054
SSI	513676	613391
Non Farm Misc.	361411	540664
IV. OTHER PRIORITY SECTOR	9237904	12155203
Transport Operators	390919	452768
Trade and Small Business	1230257	1756387
Prof. & Self Employed	276418	356707
Educational	703897	1057751
Housing	4106027	5782168
Consumption	511838	872365
Misc.	2018348	1877057
<b>TOTAL PRIORITY SECTOR</b>	<b>17751785</b>	<b>21867739</b>
<b>TOTAL NON PRIORITY SECTOR</b>	<b>9674072</b>	<b>9966692</b>
<b>TOTAL DISTRICT CREDIT PLAN</b>	<b>27425857</b>	<b>31834431</b>

## 12 ANNUAL PLAN

## 12.1 Expenditure on SCP and TSP 2004-05 (Rs. in lakhs)

Name of Institutions	Receipt				Expenditure					
	General	EFC/ RIDF	SCP	TSP	Total	General	EFC/ RIDF	SCP	TSP	Total
Grama panchayat	356466000	52858000	133492000	9182000	551998000	307683421	37415438	118308596	9244727	472652182
Municipality	53142200	5405900	18823000	0	77371100	489556612	3350296	14598060	0	66903968
Corporation	196143000	18188400	58464600	0	272796000	158756687	11683576	33053782	0	203494045
Block panchayats	51512790	37506252	42192104	3705827	134916973	50430372	23517355	37729810	2774702	114452239

## 12.2 Expenditure on SCP and TSP 2005-06 (Rs.in lakhs)

Name of Institutions	Receipt				Expenditure				%
	General		Total	General		TSP	SCP	Total	
	Normal	RIDF		Normal	RIDF				
Grama panchayat			654942000					494974643	
Municipality			89940750					71451954	
Corporation			310630000					171649063	
Block panchayats			163876500					131542698	
District panchayaths			166361000					65406794	
<b>Total</b>			<b>1385750250</b>					<b>935025152</b>	

## 13. STATE INCOME

### 13.1 Net Domestic Product at factor cost by Industry of Origin (At Constant Price) Base 1999-00 (Rs. In Lakhs)

Sector	2001-02		2002-03		2003-04		2004-05(P)		2005-06(Q)	
	District	State	District	State	District	State	District	State	District	State
<b>Primary Sector</b>	111720	1456904	106997	1468237	100251	1441777	109995	1500388	108368	1503905
<b>Secondary Sector</b>	160412	1344838	177745	1484936	212525	1795041	229803	1945520	255011	2168065
<b>Tertiary Sector</b>	440749	3939403	480322	4296142	513891	4609187	560994	5049159	621200	5202207
<b>Net Domestic Product</b>	712881	6741145	765064	7249315	826668	7846005	900793	8495067	984578	9274177
<b>Mid Year Population ('000)</b>	3247	31968	3287	32357	3324	32711	3361	33072	3397	33425
<b>Per Capita Income (in Rs.)</b>	21955	21087	23275	22404	24870	23986	26801	25687	21984	27746

### 13.2 Net Domestic Product at factor cost by Industry of Origin (At Current Price) Base 1999-00 (Rs. In Lakhs)

Sector	2001-02		2002-03		2003-04		2004-05(P)		2005-06(Q)	
	District	State	District	State	District	State	District	State	District	State
Primary Sector	100024	1313164	100655	1386317	104767	1508816	120432	1651671	127896	1771664
Secondary Sector	170722	1436272	193715	1622607	239400	2020959	271076	2289894	307651	2605804
Tertiary Sector	463349	4146566	526389	4715291	588946	5292595	651760	5878623	728585	6603176
Net Domestic Product	734095	6896002	820759	7724215	933113	8822370	1043267	9820188	1164132	10980644
Mid Year Population ('000)	3247	31968	3287	32357	3324	32711	3361	33072	3397	33425
Per Capita Income (in Rs)	22608	21572	24970	23872	28072	26971	31040	29693	34269	32852

**13.3 Gross Domestic Product at factor cost by Industry of Origin (At Constant Price)**  
**Base 1999-00 (Rs. In Lakhs)**

Sector	2001-02		2002-03		2003-04		2004-05(P)		2005-06(Q)	
	District	State	District	State	District	State	District	State	District	State
<b>Primary Sector</b>	116477	1515225	113061	1533192	105028	1510053	1573755	1573755	116192	1576593
<b>Secondary Sector</b>	189214	1549906	202454	1666616	239899	1994244	258580	2153378	285466	2386823
<b>Tertiary Sector</b>	493920	4355782	539843	4749862	577104	5091139	629133	5571278	683651	6079964
<b>Gross Domestic Product</b>	799612	7424913	855458	7949670	922031	8595436	1002150	9298411	1085308	10043380
<b>Mid Year Population ('000)</b>	3247	31968	3287	32357	3324	32711	3361	33072	3397	33425
<b>Per Capita Income (in Rs)</b>	24626	23226	26026	24569	27739	26277	29817	28116	31949	30048

### 13.4 Gross Domestic Product at factor cost by Industry of Origin (At Current Price)

Base 1999-00 (Rs. In Lakhs)

Sector	2001-02		2002-03		2003-04		2004-05(P)		2005-06(Q)	
	District	State	District	State	District	State	District	State	District	State
<b>Primary Sector</b>	105141	1379981	105856	1457606	110164	1586204	127061	1745053	135341	1879429
<b>Secondary Sector</b>	202390	1662063	221455	1826673	271183	2252340	306484	2545615	346465	2884321
<b>Tertiary Sector</b>	521517	4603086	592983	5223027	661738	5849792	732423	6500195	817574	7292689
<b>Gross Domestic Product</b>	829048	7645130	920293	8507306	1043086	9688336	1165968	10790863	1299380	12056439
<b>Mid Year Population ('000)</b>	3247	31968	3287	32357	3324	32711	3361	33072	3397	33425
<b>Per Capita Income( Rs)</b>	25533	23915	27998	26292	31380	29618	34691	32628	38251	36070

Department of Economics & Statistics, Kerala

**13.5 Income & Expenditure 2005-2006( Provl)**

<b>INCOME (Rs)</b>	
Building Tax	180628748
Entertainment Tax	48846856
Duty on transfer of property	38387214
Professional tax	119146264
Income from market	18196717
Income from other sources	547658463
<b>Total</b>	<b>952864262</b>
<b>EXPENDITURE (Rs)</b>	
Establishment charge	186009128
Public work	235550856
Education	15208657
Water supply	16398719
Electricity	51226373
Others	280550879
<b>Total</b>	<b>784944612</b>



## 14. PUBLIC DISTRIBUTION SYSTEM

### 14.1 Public Distribution details (2006-07)

	Disrict	State
No: of Ration Cards (Urban)	193768	1234536
No: of Ration Cards (Rural)	607689	5751481
<b>Total</b>	<b>801457</b>	<b>6986017</b>
No. of BPL Cards	165602	1492283
No: of AAY Cards	66921	593127
No: of APL Cards	568934	4900607
No: of Annapurna Cards	4571	44199
No:of Adults	3024704	28647463
No: of Non Adults	601772	5791087
Total Units	6651180	63086013
No. of CS Corpn: AWDs	2	10
No: of Co-op AWDs	1	34
Private AWDs	30	292
<b>Total</b>	<b>33</b>	<b>336</b>
No:of CS Corpn: KWDs	0	1
No:of Private KWDs	40	311
<b>Total</b>	<b>40</b>	<b>312</b>
No:of Co-op ARDs	52	509
No:of private ARDs	1823	13702
<b>Total</b>	<b>1875</b>	<b>14211</b>

Theoretical requirement of Rice (in Mt.Ton)	248472	2147796
Theoretical requirement of Wheat (in MtTon )	72636	631224
Theoretical requirement of Sugar (in Mt.Ton)	5040	53436
Theoretical requirement of Kerosene (lr)	45518	364596
No: of electrified cards	609889	5100886
No:of non electrified cards	191568	1885131
No:of Mavali Stores *	80	869
Neethi Stores		

**14.2 Details of APL, BPL, AAY, ANP Cards as on  
March-07**

	<i>Ration Cards</i>	<i>District</i>	<i>State</i>
<b>APL</b>		568934	4900607
<b>BPL</b>		165602	1492283
<b>AAY</b>		66921	593127
<b>ANP</b>		801457	6986017
<b>Total</b>	<b>Beneficiary (Nos)</b>	4571	44199

**14.3 Details of Kerosene Dealers**

	<b>Co-Operative Societies</b>	<b>Private</b>	<b>Total</b>
<b>District</b>	0	40	40
<b>State</b>	1	311	312

**14.4 Details of Population, Unit, Ration Cards, Permits & Ration Shops as on March-2007**

		<b>District</b>	<b>State</b>
Ration Population	Adults	3024704	28647463
	Non-Adults	601772	5791087
	Total	3626476	34438550
Ration Units		6651180	63086013
Ration Cards		801457	6986017
No. of Permits		687	14101
Wholesale Dealers		33	336
Retail Dealers		1875	14211

**14.5 Details of Ration Dealers as on March-2007**

		<i>District</i>	<i>State</i>
<b>Wholesale Dealers</b>	FCI	2	20
	KSCSC	2	10
	Co-Operative Societies	1	34
	Private	30	292
	Total	33	336
<b>Retail Dealers</b>	Co-Operative Societies	52	509
	Private	1823	13702
	Total	1875	14211

**14.6 Requirement of Kerosene during 2006-2007**

	<i>District</i>	<i>State</i>
Electrified Cards	609889	5100886
RQMT	14640	122424
Non-Electrified Cards	191568	1885131
RQMT	11494	1132112
Cooking	121460	932537
RQMT	8748	67140
Agriculture	0	16286

RQMT	0	1428
Fishing	2877	15480
RQMT	10432	60909
Others	182	6129
RQMT	204	1908
<b>Total RQMT</b>	<b>45518</b>	<b>366921</b>

**14.7 Allotment, Lifting, and Off-take of APL, BPL, AASY Rice in MT during 2006-2007**

			<b>District</b>	<b>State</b>
<b>APL</b>	Allotment		162459	1361040
	Lifting	FCI	11052	124339.27
		CMR	0	47365.04
	Off-take	FCI	9128.04	112147.21
		CMR	0	45912.74
	% Off-take		5.62	11.61
<b>BPL</b>	Allotment		34392	317510
	Lifting	FCI	34342	274549.6
		CMR	0	42963.4
	Off-take	FCI	34546.4	283061.49
		CMR	0	44197.21

	% Off-take		100.45	103.07
AAY	Allotment		27712	247131
	Lifting	FCI	27712	224327.1
		CMR	0	22181
	Off-take	FCI	27148.64	220219.8
		CMR	0	22711.14
	% Off-take		97.97	98.30

## 15. PORT & HARBOUR

### 15.1 Vizhinjam 2005-2006

Fishing Crafts Mechanised	55
Fishing Crafts Motorised	3063
Fishing Crafts Non- Motorised	5005
Total No: of Regstd: Fishing Vessels	0

## 16 RURAL DEVELOPMENT

### 16.1 Swarnajayanthi Grama Swarozgar Yojana 05-06

No:of Self Help Groups Formed	10716
No:of Self Help Groups passed Grade I	NA
No:of Self Help Groups passed Grade II	NA
No:of Self Help Groups assisted for economic activities	890
No:of individual Swarozgaries assisted economic activities	467
Amount of subsidy disbursed (in lakhs)	NA
Amount of loan disbursed (inlakhs)	NA

### 16.2 Indira Avaz Yojana

<i>Construction of new houses during 2005-06</i>	<i>SC/ST</i>	<i>General</i>	<i>Total</i>
No; of houses completed	1408	979	2387
Expenditure during the year (in lakhs)			-
No; of houses completed	1408	979	2387
Expenditure during the year(in lakhs)	-	-	-

### 16.3 Sampoorna Gramina Rozgar Yojana 2005-06

No: of works under taken	2149
No: of works completed	1006
Man days generated (lakhs)	5.57

**16.4 Social Welfare institutions as on 2005**

1. No: of ICDS Project Offices	14
2. World Bank assisted	Scheme closed in 2006
3. No: of Anganwadies sanctioned	3004
4. No: of Anganwadies Functioned	3004
5. Welfare Institution	7
6. Beneficiaries	260
7. Orphanages	72
8. Old Age Homes	2
9. Beneficiaries	125



## 17. POLICE

### 17.1. Police Offices

1.	No. of SP Offices	1
2	No. of DYSP Offices	3
3	No. of Circle Offices	14
4	No. of Police Stations	34
5	No. of Women Cell	1
6	No. of Police Control Room	1

### 17.2 Details of Crimes during 31.12.05

1.	Murder	38
2.	Rape	46
3.	Kidnapping	21
4.	Robbery	186
5.	Burglary	707
6.	Theft	932
7.	Riots	927
8.	Dowry death	2

**17.3 Details of Road Accidents 2005**

1.	No. of Road accidents	5418
2.	No. of Persons killed	337-
3.	No. of persons injured	1596-

**17.4 No. of Two wheeler Road Accidents 2005**

1.	No. of Road Accidents	3300
2.	No. of Persons killed	337-
3.	No. of persons injured	1596-

**17.5 Offences against Women – 2005**

1.	Rape	42
2.	Kidnapping	58
3.	Dowry death	6
4.	Molestation	59
5.	Cruelty by Husband and relatives	97

**17.6 Accidental death by Natural Causes – 2005**

1	Male	5
2	Female	Nil

## 18. MISCELLANEOUS

### 18.1 Social and Cultural Institutions 2005

1. Public Library	306
2. Reading room	365
3. Balavady	79
4. Anganavadi	2082
5. Adult Education Centre	143
6. Community hall	119
7. Sports club	751
8. Arts club	568
9. Community Radio Sets	64
10. Community TV Sets	514

### 18.2 Scheduled Caste & Scheduled Tribe Colonies

1.	Scheduled caste	208
2.	Colonies	1013
3.	Houses	30743
4.	Electrified	17520

5.	IHDP -No: of colonies	200
6.	IHDP -No:of house hold Benefited	7984
7.	IHDP- No electrified	NA
8.	Scheduled Tribe colonies	140
9.	Houses	2015
10.	Electrified	998

**18.3 Number of seats reserved for women in LSGs -  
2005-06**

<b>Grama Panchayat</b>	
Total No. of Wards	1332
Seats reserved for women	481
Seats reserved for women Presidents	25
<b>Block Panchayat</b>	
Total No. of wards	160
Seats reserved for women	57

<b><i>District Panchayat</i></b>	
Total No. of wards	28
Seats reserved for women	12
<b><i>Municipalities</i></b>	
Total No. of Wards	135
No: of seats reserved for women	48
<b><i>Corporations</i></b>	
Total No. of Divisions	86
No: of seats reserved for women	26

### ***18.4 Water Resources***

<b><i>Important Rivers</i></b>	
Karamana, Neyyar, Mamom, Vamanapuram	
<b><i>Important Lake ( Fresh Water)</i></b>	
<i>Vellayani Lake</i>	
<b><i>Back Water (Kayal)</i></b>	<b><i>Area in Hects.</i></b>
Veli	22.48
Anchuthenghu	521.75
Kadinamkulam	346.88
Edava-Nadayara	157.65
Poovar	30.93
Poonthura	97.59

**18.5 Irrigation Work Details**

<i>Type of works</i>	<i>Works Completed</i>
Minor irrigation Class I	Nil
Minor irrigation Class II	Nil
Lift irrigation	Nil
IPD	Nil
Community Irrigation	Nil
EEC	Nil
Jilla Panchayat Works	Nil
NABARD	2
Total	2
Expenditure during the year (in Rs)	17,04,222

### **Sources of Data**

1. *Census 2001*
2. *Agricultural Statistics 2004-05, 2005-06*
3. *District Animal Husbandry, Thiruvananthapuram*
4. *District Industries Centre, Thiruvananthapuram*
5. *Khadi & Village Industries, Thiruvananthapuram*
6. *Coir Project Office, Thiruvananthapuram*
7. *Employment Office, Thiruvananthapuram*
8. *RTO, Thiruvananthapuram*
9. *District Education Office, Thiruvananthapuram*
10. *DMO Office, Thiruvananthapuram*
11. *ESI, Thiruvananthapuram*
12. *Indian Bank, Thiruvananthapuram*
13. *District Planning Office, Thiruvananthapuram*
14. *District Supply Office, Thiruvananthapuram*
15. *Tourism Directorate, Thiruvananthapuram*
16. *District Labour Office, Thiruvananthapuram*
17. *SC Development Office, Thiruvananthapuram*
18. *Rural Development Office, Thiruvananthapuram*
19. *SP Office, Thiruvananthapuram*
20. *Vanashree Office, Thiruvananthapuram*
21. *Panchayat Level Statistics 2005-06*
22. *Factories & Boilers Office, Thiruvananthapuram*
23. *District Soil Conservation Office, Vanchiyoor, Tvpm*
24. *Port & Harbour Engineering Office Thiruvananthapuram.*
25. *Diary Development Office, Pattom, Tvpm*





594

