

*Comma*  
*Ally*  
*Burton*



DISTRICT  
STATISTICAL HAND BOOK

PALGHAT

1966

ISSUED BY

The Bureau of Economics & Statistics,  
Government of Kerala,  
Trivandrum.



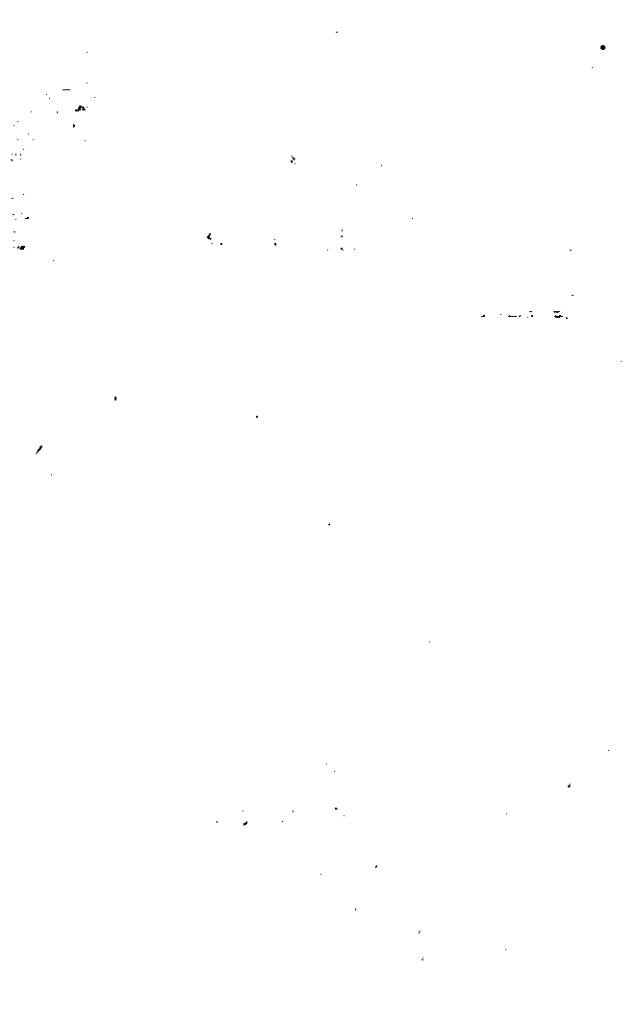
DISTRICT  
STATISTICAL HAND BOOK  
PALGHAT

*Issued by*

The Bureau of Economics & Statistics

Kerala

1971



## P R E F A C E

“The District Statistical Hand Book, Palghat 1966” is the 7th in a series of nine District Statistical Hand Books proposed to be brought out by this Bureau.

The Data presented in this publication has been drawn from the various publications of this Bureau and from the Publications of Sister Departments. The source from which data have been collected are indicated in the tables.

This publication has been prepared by Shri C. R. Parameswaran, Research Officer, assisted by Shri N. K. Vamadevan, Compiler under the guidance of Shri P.P. Philipose, Deputy Director (Planning and Co-ordination Division) of this Bureau.

It is hoped that the District Statistical Hand Books may go a long way in filling up the gaps in the availability of District-wise Statistical information.

Suggestions for improvements of the publication are welcome.

Dr. P. K. GOPALAKRISHNAN,  
*Director,*

*Bureau of Economics and Statistics.*

Trivandrum,  
4-2-1969.

## CONTENTS

- A - Palghat District (a brief description)
- B - Palghat District at a glance and comparison with Kerala
- C - Tables

### Section I. Area, Population and Housing

Table No.	Page
1.1 (a) Area and Population	32
1.1 (b) Rural and Urban population	34
1.2 Population by natural regions	36
1.3 (a) Growth rate of population	38
1.3 (b) Taluk-wise growth of population	40
1.4 Variation of Rural and Urban population	44
1.5 Rate of population growth compared with adjacent districts	46
1.6 Density of population by taluks	47
1.7 Population density by natural region	48

		Page
1.8	Sex-wise break-up—Rural and Urban population	50
1.9	Sex ratio 1901-1961	51
1.10	Sex-ratio by natural region	52
1.11	Percentage distribution of population by age-group	54
1.12	Population by broad age-group percentage distribution	58
1.13	Distribution of 1000 persons by each sex and marital status	59
1.14	Population by religion	60
1.15	Distribution of persons by mother-tongue	62
1.16	Trend of population 1901-1961	64
1.17	Workers and non-workers 1961	66
1.18	Distribution of 1000 persons in each taluk into workers and non-workers	68
1.19	Population of scheduled castes and scheduled tribes	70
1.20	Towns and Villages - 1961	72



	Page
1.21	Area and population of municipalities 73
1.22	Estimated population of Palghat district and Kerala State 74
1.23	Sex ratio of workers by Industrial Classification 76
1.24	Sex ratio by age-group 78
1.25	Sex ratio by religion 79
1.26	Percentage distribution of population by marital status and sex 80
1.27	Persons not at work classified by sex and type of activity 82
1.28	District-wise area and population - Kerala 84
1.29	Number of occupied residential houses 86
1.30	Variation in occupied census houses in Palghat district 88
1.31	Number of persons per 1000 occupied houses 90
1.32	Persons per occupied census house by taluk 91

	Page
1.33	Distribution of census houses by categories and by rural and urban areas 92
1.34	Distribution of 1000 house- holds according to tenure status 96
1.35	Taluk-wise distribution of 1000 households by predominant material of wall of their dwell- ings 98
1.36	Taluk-wise distribution of 1000 households by predominant material of the roof of their dwellings 100
1.37	Distribution of 1000 house- holds by number of rooms occupied 102
1.38	Number of persons per room and persons per household 103
1.39	Number of occupied residential houses per sq. k. m. 104

**Section II. Rainfall**

2.1	Average annual rainfall in recording stations	106
2.2	Average monthly rainfall	107
2.3	Average annual rainfall (yearly) Palghat district	108

**Section III. Agriculture**

3.1	Classification of area	110
3.2	Area under important crops	112
3.3	Production of important crops	114
3.4	Index numbers of agricultural production	116
3.5	Estimated mean yield of dry paddy	118
3.6	Classification of soils	120
3.7	List of paddy seed farm and Research Station	121
3.8	Important markets for Agricultural commodities	122

	Page
3.9	Agricultural implements 124
3.10	Agricultural labourers 126
<b>Section IV. Livestock and Veterinary</b>	
4.1	Livestock population 128
4.2	Veterinary Hospitals and dispensaries 132
4.3	Livestock treated in Veterinary institutions 134
4.4	Livestock slaughtered in Municipalities 136
<b>Section V. Forests</b>	
5.1	Area of Reserved forests 139
5.2	Out-turn of major forest produce 140
<b>Section VI. Electricity</b>	
6.1	Number of consumers of Electricity 143

**Section VII. Industries, Labour and  
Employment**

7.1	Registered working factories in Palghat district	146
7.2	Number of Employees in Registered factories	150
7.3	Employment in plantations (Daily average) - Abstract	154
7.3 (a)	Employment in Rubber plan- tations (daily average)	155
7.3 (b)	Employment in Tea Planta- tions (daily average)	156
7.3 (c)	Employment in Coffee planta- tions (daily average)	157
7.4	Agricultural wages (Daily average)	158
7.5	Industrial disputes in Palghat district	159
7.6	Applicants on the live register of Employment Exchange	160

	<b>Page</b>
7.7	Number of applicants placed in Employment through Employ- ment Exchange 162
7.8	Workers by industrial category and sex 164
7.10	Workers (excluding cultivators and Agricultural Labourers) by occupational division 166
7.11	Non-workers of Palghat district by age and sex 168
7.12	Distribution of 1000 persons in each taluk into workers and non-workers by sex 169
7.13	Distribution of 1000 workers in each taluk by sectors of Industry 170
<b>Section VIII. Registration</b>	
8.1	Registration of documents 172
8.2	Category of value of docu- ments registered 174
8.3	Book-war details of Regis- tration 176

	Page
<b>Section IX. Law and Order</b>	
9.1	Number of Police Stations and Outposts 179
9.2	Sanctioned strength of police force 180
9.3	Serious crimes in Palghat District 182
9.4	Trend of cognizable offences 183
9.5	The value of property stolen and recovered 184
 <b>Section X. Education.</b>	
10.1	Number of literates in 1951 & 1961 186
10.2	Growth of literacy 1951-1961 188
10.3	Proportion of literates—Male and Female 190
10.4	Distribution of High, Training, Upper Primary and Lower Primary Schools 192
10.5	Strength in primary classes by sex 194
10.6	Strength in upper primary classes by sex 196

	Page
12.2	Length of Railways 1965-66 242
12.3	Number and type of motor vehicles on road 243
12.4	Analysis of operation of State Road Transport Corporation Buses 244
12.5	Fleet utilisation of State Road Transport Corporation 246
12.6	Number of passengers carried and distance travelled in State Transport Corporation buses 248
12.7	Number of Post and Telegraph Offices in Palghat District 250
<b>Section XIII. Prices</b>	
13.1	Consumer Price Index Numbers (monthly) 252
13.2	Consumer price index numbers compared to neighbouring centres 254
13.3 (a)	Monthly average retail prices of certain commodities Palghat Centre-1965 256



	<b>Page</b>
13.3 (b) Monthly average retail prices of certain commodities Ottappalam Centre-1965	260
13.4 (a) Monthly average retail prices of certain commodities Palghat Centre-1966	264
13 4 (b) Monthly average retail prices of certain commodities Ottappalam centre-1966	268

#### **Section XIV. Joint Stock Companies**

14.1 Joint Stock Companies at work as on 31-3-1964	274
14.2 Joint Stock companies at work as on 31-3-1965	276
14.3 Joint Stock companies at work as on 31-3-1966	278

#### **Section XV. Local Bodies and N. E. S. Blocks**

15.1 Number of Panchayats and population	281
15.2 Income of Panchayats	282

15.3	Expenditure of Panchayats	284
15.4	N. E. S. Blocks - General information	286
15.5	N. E. S. Blocks and Panchayats	288
15.6	Income of Municipalities	300
15.7	Expenditure of Municipalities	302

### Section XVI. Co-operation

16.1	Number of Co-operative societies, membership and working capital	306
16.2	Agricultural Credit Societies loans issued in 1964-65	310
16.3	Harijan Societies	312
16.4	Harijan Societies - loans issued 1964-65	314
16.5	Milk Supply Societies 1964-65	316

### Section XVII. Salestax

17.1	Number of dealers registered under the General Salestax Act in Palghat district	320
------	---	-----

	Page
17.2	Statement of particulars of non-assessees 322
17.3	Number of notices issued under Agricultural Incometax 324
17.4	Miscellaneous receipt under Central Salestax 326
17.5	Year-wise break-up of arrears under Salestax pending collection (General Salestax, Surcharge and Central Salestax) 328
17.6	Year-wise break-up of arrears under Agricultural Incometax pending collection 329
<b>Section XVIII Miscellaneous</b>	
18.1 (a)	Loan applications received, sanctioned and amount disbursed by the Kerala financial Corporation as on 31-3-1966 330
18.1 (b)	Loan application received, sanctioned and amount advanced from agency funds by the Kerala financial Corporation 331

	Page
18.2	Small savings collection in Palghat district during 1966 332
18.4	Number of libraries and reading rooms receiving grant per annum 334
18.5	Third Five year plan (1961-62 to 1965-66) financial achievement in Palghat district 336
18.6	Demand collection and balance of various land taxes in Palghat district 338
18.7	Details of thandapers in Palghat district 339
18.8	Receipt and disposal of applications under various schemes of social benefit in Palghat district 342
	Conversion Table 344

## **A. PALGHAT DISTRICT**

Palghat District lies between north latitude  $10^{\circ} 19'$  and  $11^{\circ} 14'$  and east longitudes  $75^{\circ} 55'$  and  $76^{\circ} 54'$ . It is bounded by Kozhikode and Nilgiris Districts, on the north, Coimbatore District on the east, Trichur District on the south and Arabian Sea on the west.

With the enactment of the States Re-organisation Act of 1956 the former Malabar District (except Laccadives and Minicoy Islands) and the old Kasargod taluk of South Kanara district were added together to form a new Malabar district.

On 1st January 1957, this Malabar District was trifurcated into three new revenue districts. The Palghat district thus formed consisted of old Walluvanad, Palghat and portion of Ponnani taluks of Malabar district and Chittur taluk of the erstwhile Travancore Cochin State. On the same date the old Walluvanad taluk was bifurcated into Perinthalmanna and Ottappalam taluks, while the Palghat taluk was trifurcated to form Palghat, Alathur and portion of Chittur taluk. The present Chittur taluk is formed by taking the entire Chittur taluk of the former Travancore-Cochin State and 14 villages of old Palghat taluk. The old Ponnani taluk was divided into three, forming the existing Ponnani taluk, the existing Chowghat

taluk and portion of Tirur taluk. Chowghat taluk and portion of Tirur taluk were included in the Trichur and Kozhikode district respectively. Thus the Palghat district is constituted of 6 taluks namely Alathur, Chittur, Ottappalam, Perinthalmanna, Ponnani and Palghat, 304 revenue villages, 2 municipal towns (Chittur-Thathamangalam and Palghat), 12 Panchayats and 12 Development blocks.

With an area 5127.2 K. M. (1979.6 Sq. miles) Palghat district stands fourth in the State in regard to area. The narrow coastal strip with a length of 20.92 K. Ms (13 miles) at the western extremity of the district is noted for its lagoons, coconut fringed back-waters and river banks and wide expanses of paddy fields. About 69.93 Sq. K. Ms (27 Sq. miles) of the western littoral region of Ponnani taluk come under the category of low land. To the east of this, lies the midland region which is suited for the cultivation of peppervine, paddy coconut palm and cashenut. The midlands are succeeded by the high lands consisting of mountain regions with ravines, dense forest and Tangled Jungles. One of the striking features of the western ghats is "The Great Palghat Gap, a complete opening some 32 K.M (20 miles) across in this great back-bone of the peninsula." Through the gap, the north east wind blows spreading its wings right upto the coast throughout the breadth

of the gap. The gap also helps the passage of roads and railways from Carnatic to Kerala.

A major portion of Perinthalmanna taluk consists of Forests. The attapadi valley which contains the headwaters of Bnavani river is covered with spurs and slopes of the Ghats besides valuable timber products. This hilly taluk produces rice, coconut, cashewnut, pepper and arecanut. South to Perinthalmanna lies Ottappalam taluk which has cultivable paddy fields and gardens containing Jack, Arecanut and various other tree crops. Ponnani taluk borders the Arabian Sea with the same cultivation as the above. The Palghat taluk is singularly diversified in its physical aspects. "The heavy forests, extensive ravines and jungles of the taluk stretching westwards gradually dissolve into forest-clad up-lands succeeded by flat rice fields fringed with high palmyra grooves and numerous mountain torrents." The terrain of Alathur taluk is similar to Palghat taluk and this taluk produces Rice, Groundnut and Coconut. Chittur, the southern taluk of this district has few ridges of rocks though Nelliampathy and Pothundi with their rich forests cover it on one side. The main producers are paddy, groundnut, cotton, sugarcane, coconut and arecanut.

The only river of importance in the district is Bharathapuzha or Ponnani River which is the longest river in the State. It has a length of 374.40

**K.Ms (156 miles).** The entire Palghat district is drained by this and her tributaries spread over the district. This river with a navigable length of 40.23 K. Ms (25 miles) has an annual run off of 311800 million cubic feet. There are several irrigation projects constructed on this river.

The western ghats maintain an average height of 1524 metres (5000 feet). Veliyangode lake, the only back-water is situated about 4.8 K. Ms (3 miles) east of Ponnani.

The soils of Palghat district are divided into five classes, viz., sandy, peaty (kari), laterite, forest and black-soil. Sandy soil exists only on the sea-coast of Ponnani taluk. But there is a small area at the centre of the same taluk with peaty soil. Laterite soil occurs in the residuary portion of Ponnani taluk. and major portions of Perinthalmanna, Ottappalam, Palghat, Alathur and Chittur taluks. Forest soil is confined to the eastern regions of Perinthalmanna and Ottappalam taluk and a narrow strip of land along the western boundaries of Palghat and Alathur taluks and along the southern boundary of Chittur taluk. The major portion of black soil, which is suitable for cotton cultivation, is confined to the eastern sector of Chittur taluk and to a small region of Palghat taluk.

The Palghat district from east to west may be divided into four belts according to the Geological



formations. The belts are orientated more or less north to south and consist of (i) a high mountain belt made up of crystalline rocks of the Archaean Group, (ii) a broad belt of residual laterite (iii) a narrow belt of the warkalli beds of the tertiary group and (iv) the western most coastal belt of recent deposits. The deposits of the coastal region includes the marine, alluvial and lacustrine.

Perinthalmanna taluk was once the centre of flourishing native iron industry. Low grade magnetic iron ores occur at several localities such as Irukunnu, Kizhakkumparambu, Madamkunnu, Mankada, Mudikade, Sankarankunnu, Talikode etc. Kankar limestone is seen developed in the Chittur and Kozhinjampara firkas of Chittur taluk. The large demands of lime of the entire Palghat district are supplied by the Vannamada and Mookinada villages. Muscovite Mica is reported to occur in the Sholayar village and also at Talikode where two concessionaries are currently engaged in developing the deposits. Amethyst exists sporadically in several places like Karalmanna, Meenakshipuram and Pallasena. This mineral does not have any economic significance. Crystalline rocks are used for building purposes and also as road metal. Laterite is also widely used as a building stone in this district. Ilmenite, monazite, Lurione, Rutile etc. occur on the Ponnani beach.

The climate of this district represents more or less the climate of the intertropical countries similarly situated. This district has also four seasons, the dry weather from December to February hot weather from March to May, southwest monsoon from June to September and the retreating or north-east monsoon from October to November. The climate along the seacoast is generally temperate more or less throughout the year but in the eastern taluks it is very hot in the months of April and May.

Only Perinthalmanna, Palghat and Chittur taluk, have reserve forest areas which come under Palghat and Nemmara forest division. For administrative purposes Palghat division is divided into four ranges, Mannarghat east range, Mannarghat range, Olavakkot range and Palghat range. Of these portion of Mannarghat east range falls under the revenue jurisdiction of Kozhikode district also. The reserve forests coming under the jurisdiction of this division are silent valley, Attapadi (Block I to V), Panakadam, Attapadi (Block VI) Chenat Nair Dhoni, Pulliampathy Tope and Valyar. Major portion of silent valley is situated within the Ernad taluk of Kozhikode district. Nemmara Forest division which was constituted in 1958 consists of Sungom, Parambikulam and Nemmara ranges. The reserve forests within this division are Kanjiramkode, Chinna Govinda Mala, Athanad Kundali, Ayilmudi, Tekkady and Nelliampathy.

The various land tenures prevalent in this district as on March 1961 were jenmom, inams, kanom, kanom-kuzhikanom, customary, verumpattom, kudiyrippu, separate kudiyrippu, separable kudiyrippu, cultivating verumpattam, ulkudi and protected ulkudi.

The major irrigation schemes in the district under different stages of construction in the Bharathapuzha river valley are Malampuzha, Valayar, Mangalam, Meenkara, Cheerakuzhi and Pothundi. Other major and medium irrigation schemes are Chulliyar Reservoir project (Meenkara second stage), Kanhirapuzha scheme and construction of a bridge cum regulator across Bharathapuzha near Kuttipuram.

Majority of the population as in the case of other district of the State depend on agriculture. For the year ending June 1966 it was estimated that the total cropped area was 338225 hectares which was 66.26% of the total geographical area of the district (ie. 510424 hectares). Palghat district stands foremost in regard to the production of paddy in Kerala. During the year 65-66 production of rice in Palghat district was 320120 Metric tonnes. ie. 32.09% of the total production of the State.

Coconut which is economically the most important crop of Kerala, grows practically in all areas of the district. The area under coconut

was 22903 hectares and the production of the same was 90 million nuts during the year 1965-66.

For the year ending June 1966 the area under cotton cultivation in the district was 6819 hectares ie. 95% of the total area of the cotton cultivation of the State and the total production of cotton comes to 6648 Bales of 180 Kg. ie. 96% of the total cotton production of the State.

Groundnut is cultivated in the State only in two districts viz. Trivandrum and Palghat and the production of groundnut in Palghat district was 24450 M. T. ie. 92.8% of the total production of the State.

According to 1961 census the percentage of literacy is lower than that of the State while 34.1% of the population of the district were only literates, the corresponding figure of the State was 46.9%. The percentage of the total male and female literates of this district according to 1961 census is 42.1 and 26.6 respectively. It is estimated that 49.3% of the male population and 35.6% of the female population of the district are literate in 1965-66. The number of school going children in 1965-66 was 321374. In 1965 there were altogether 1160 schools in this district of which 784 were lower primary schools, 275 upper primary schools, 94 High Schools and 7 Training Schools.

The oldest College in this district is the Government Victoria College which was started in the year 1866 as a rate school so called because it depended for its finances upon an educational "rate" which was at that time levied by the local Government. By the end of 1965-66 there were 7 Colleges, 5 for General education and two for professional education.

There were 9 Allopathic Hospitals, 32 Dispensaries including T. B. clinics, 15 primary Health Centres and 2 Grant-in-aid institutions during the year 1965-66 with a total bed strength of 984. In addition to these, there were 4 Ayurvedic Hospitals, 21 Ayurvedic dispensaries, 2 Homoeopathic dispensaries and one Visha Vaidya dispensary with a total bed strength of 50 during 1965-66 administered by the Indigenous and Medicines Department. The number of beds available per lakh of population in 1965-66 was 49.

In ancient times the country was split up into rival principalities and the roads were not a necessity. But by the end of 1961 the road mileage of Palghat district was 942.17 K. M. (134.91 K.Ms of lower type). This has increased to 1923 K.Ms (485 K.Ms of lower type) in 1965-66.

Palghat district has a total railway line of 149 K.Ms (122 boradgauge and 27 metergauge).

Ponnani Canal starts from Ponnani and it is linked with Chettuvai backwaters and has a length

of 4.2 K.Ms. Ponnani is the only port of importance in the district and this is situated on the mouth of Ponnani River (Bharathapuzha).

Most of the villages have post offices. The number of Post offices during 1965-66 was 449 while the same was 385 during 1961. By the end of 1965-66 there were 69 telephone offices and 1556 telephone connections in this district.

Important markets in the district are Palghat, Chittur and Ponnani. Paddy, gur, groundnut, arecanut rice and tobacco are the important commodities available at Palghat market. Groundnut, palmgur, canegur and tobacco are available at Chittur market. Only coconut, arecanut and tapioca are available in Ponnani market.

**Kollengode:-** Kollengode an important place in the present Chittur taluk is situated about 19 K. Ms (12 miles) south of Palghat. It was formerly the seat of a petty Chieftain known as Venganatt Nambidiri who reigned in these parts before it was fallen into the hands of the British administrators. The descendants of this ancient family have their residence here. The famous Kachankurushy temple dedicated to Vishnu is located here. At 6 and 3 miles (9.66 and 4.83 K.M) respectively from this temple on the hills there are two natural springs called the Govindathiratham and Sitakundu. Both of these are held in veneration and resorted to by the people.

**Nelliampathy:-** Nelliampathy, about 9 K.M. to the south of Nemmara 32.19 K.M (20 miles) from Palghat has great importance both in regard to economic and hydro-electric potentialities. The Nelliampathy range varies in height from 457 metres to 15172 metres above the sea level and consists of a succession of ridges cut off from one another by valleys containing dark ever green forests. The highest peak in the range is Nellikotta or Padagiri. A continuation of the Nelliampathy towards south-east meets Parambikulam. Its highest peak Karimala Gopuram is 1439 metres above the sea level. Its virgin forest are the most valuable in the State; the teak and other trees growing there are superior both in grain and in size to the produce of other forests.

**Nemmara:-** Nemmara, an important cotton weaving centre, is situated 24.14 K.Ms to the west of Chittur. More than 75% of the people are engaged in non-agricultural pursuits, the important trade being cotton weaving.

**Malampuzha:** The Malampuzha project with its picturesque surroundings is situated almost 8.05 K.M. from Palghat. This is one of the biggest irrigation projects in Kerala consisting nearly 619.74 lakhs by the end of 31-3-66. The project has an ayacut of 19263 hectares. There is a fine garden attached to the dam. A convenient and comfortable tourist house has been provided at

## PALGHAT DISTRICT AT A GLANCE

Sl. No.	Item	Unit
1	2	3
<i>O. General</i>		
0.1	Area	Sq. K.M.
0.2	Length of coastal line	K. M.
0.3	Number of districts	No.
0.4	Number of Taluks	"
0.5	Number of revenue villages	"
0.6	No. of Panchayats	"
0.7	No. of Municipalities	"
0.8	Number of blocks	"
0.9	Location between North latitude	...
0.10	Location between East longitude	...
<i>I Population</i>		
1.1	Total population	Lakhs
1.2	Males	"
1.3	Females	"
1.4	Rural population	"



## AND COMPARISON WITH KERALA

Reference period	Palghat District	Kerala State	Comparison of Palghat district with Kerala
4	5	6	7
1961	5127.2	38855	13.20
	20.92	580	3.61
1966	1	9	...
1966	6	55	...
1966	304	1635	...
1966	112	921	...
1966	2	28	...
1966	12	144	...
	10° 19' & 11° 14'	8° 18' & 12° 48'	
	75° 55' & 76° 54'	74° 52' & 77° 22'	
1961	17.77	169.03	10.51
"	8.52	83.62	10.19
"	9.25	85.41	10.83
"	16.05	143.49	11.19

1	2	3
1.5 Percentage of rural population to total population		%
1.6 Urban Population		Lakhs
1.7 Percentage of urban population to total population		%
1.8 Population of Scheduled Caste		Lakhs
1.9 Population of Scheduled Tribe		„
1.10 Total workers		„
1.11 % of total workers to total population		%
1.12 Non-workers		Lakhs
1.13 % of non-workers to total population		%
1.14 Total male workers		Lakhs
1.15 Total female workers		„
1.16 Density of population		Persons per Sq. K.M.
1.17 Total literates		Lakhs
1.18 Male literates		„
1.19 Female literates		„
1.20 Total Hindus		„
1.21 Total Christians		„
1.22 Total Muslims		„
1.23 Sex ratio		Female per 1000 males

	4	5	6	7
1961		9.32	84.89	
„		1.72	25.54	6.73
„		9.68	15.11	
„		2.12	14.22	14.91
„		0.20	2.07	9.66
„		6.90	56.30	12.26
„		38.81	33.31	
„		10.87	112.73	9.64
„		61.19	66.69	—
„		4.39	39.47	11.10
„		2.51	16.83	14.91
„		346	435	—
„		6.05	79.19	7.64
„		3.59	45.96	7.81
„		2.46	33.23	7.40
„		11.23	132.82	10.92
„		0.30	35.87	0.84
„		4.52	30.27	14.93
„		1086	1022	—

1	2	3
1.24	Sex ratio of Hindus	Female per 1000 males
1.25	Sex ratio of Muslims	"
1.26	Sex ratio of Chirstians	"
1.27	% of never married person to total population	%
1.28	% of married person to total popula- tion	%
1.29	% of widowed person to total population	%
1.30	% of divorced or separated persons to total population	%
1.31	Growth of population	%
1.32	Growth of population	"
1.33	Estimated population	Lakhs

## II Agriculture

2.1	Area according to village papers	Sq. K.M.
2.2	Area under forests	Hectare
2.3	Total cropped area	Hectares
2.4	Area under Rice	"
2.5	" Tapioca	"
2.6	" Coconut	"
2.7	" Banana	"
	(including plantain)	

4	5	6	7
1961	1098	1028	—
„	1064	1032	—
„	966	995	—
„	53.2	56.67	—
„	37.6	35.84	—
„	7.5	5.92	—
„	1.7	1.54	—
1951-61	13.51	24.76	—
1901-61	81.80	164.27	—
1966	19.17	191.37	—
1965-66	5127.2	38855	13.20
„	99663	1055076	9.45
1965-66	338225	2551344	13.26
„	195121	802329	24.32
„	6476	229684	2.82
„	22903	586313	3.91
„	8797	47779	18.41

1	2	3
2.8	Outturn of Rice	M.T.
2.9	,, Coconut	Million nuts
2.10	,, Banana	Tonnes
2.11	,, Tapioca	M.T.
2.12	Tractors (Govt. & Private)	No.
2.13	Oil engine with pump for irrigation	,,
2.14	Carts	,,
2.15	Sugarcane crusher (power)	,,
2.16	Ploughs (wooden)	,,
2.17	Ploughs (Iron)	,,
2.18	Electric pump for irrigation	,,
<i>III. Veterinary</i>		
3.1	Number of Veterinary hospitals	Nos.
3.2	Number of Veterinary dispensaries	,,
3.3	Total livestock	Lakhs
3.4	Total poultry	,,
<i>IV. Industries &amp; Labour</i>		
4.1	Registered working factories	Nos.
4.2	Number of employees in registered factories	,,
4.3	Number of cultivators	,,

4	5	6	7
1965-66	320120	997489	32.09
	90	3293	2.73
„	3322	77421	4.29
„	67027	3095658	2.17
1966	108	418	25.84
„	1481	6824	21.70
„	7440	16309	45.62
„	139	457	30.42
„	134976	475930	28.36
„	2069	17179	12.04
„	739	4869	15.18
1966-67	9	63	14.28
„	10	198	5.05
1966	6.55	46.41	14.11
„	9.44	99.09	9.53
1965	241	2820	8.55
„	7386	195456	3.78
1961	140505	1178103	11.93

1	2	3
4.4	Number of Agricultural Labourers	Nos.
4.5	Persons engaged in mining, quarrying, fishing etc.	
4.6	Persons engaged in manufacture	No.
4.7	" " in construction	"
4.8	" " in trade and commerce	"
4.9	" " in transport	"
4.10	" " in other services	"
4.11	Persons engaged in household industry	"
<i>V Electricity</i>		
5.1	No. of consumers of Electricity	Nos.
<i>VI Joint Stock Companies</i>		
6.1	No. of Companies	Nos.
6.2	No. of Public Companies	"
6.3	No. of Private Companies	"
<i>VII. Medical &amp; Public health</i>		
7.1	No. of Allopathic Hospitals	Nos.
7.2	No. of Allopathic dispensaries	"
7.3	No. of Ayurvedic Hospitals (including Homoe & Vishavaidya)	Nos.



4	5	6	7
1961	217567	978396	12.44
„	32725	487359	6.71
1961	38678	529472	7.31
„	11158	70702	15.78
„	28443	321933	8.84
„	13311	152513	8.73
„	159553	1423293	11.21
„	47466	488562	9.72
1965-66	33507	324111	10.34
65-66	46	1010	4.55
65-66	12	379	3.17
65-66	34	631	5.39
65-66	9	101	8.91
„	32	217	14.75
„	4	45	8.89

1	2	3
7.4	No. of Ayurvedic dispensaries (including Homeo & Vishavaidya)	Nos.
7.5	No. of beds (Allopathic and Ayurvedic) „	
<i>VIII. Transport &amp; Communication</i>		
8.1	Number of motor vehicles	Nos.
8.2	Length of railways	[K.M.
8.3	No. of telephones	Nos.
8.4	No. of nationalised routes	„
8.5	Passengers carried (Road Transport Corporation)	Lakhs
<i>IX. Police and Crime</i>		
9.1	Number of murders	Nos.
9.2	Number of housebreaking	„
9.3	No. of cattle thefts	„
9.4	No. of ordinary theft	„
9.5	No. of cognizable offences	„

4	5	6	7
65-66	24	219	10.96
„	1034	19417	5.33
„	3237	44390	7.29
„	149	888	
„	1556	25253	
„	13	600	2.17
<b>Kozhikode transport (whole for the Malabar area) district</b>			
65-66	44.07	1585.30	2.78
<b>Kozhikode transport (whole for the Malabar area) district</b>			
1965	26	267	9.74
„	238	2259	10.54
„	23	125	18.40
„	212	2714	7.81
1964	1019	13791	7.39

1	2	3
<b>X. Registration</b>		
10.1	No. of Sub-Registry offices	Nos.
10.2	No. of documents registered	„
10.3	Value of documents registered	Lakhs
10.4	Mortgages registered	Nos.
10.5	Sales deeds registered	„
10.6	Wills registered	„
10.7	Money bonds registered	„
<b>XI. Employment Exchanges</b>		
12.1	Candidates on the Live register	Nos.
<b>XII. Education</b>		
11.1	No. of libraries and reading rooms	Nos.
12.2	No. of Schools	„
12.3	No. of Teachers	„
12.4	No. of students in primary section	„
12.5	No. of students in middle section	„
12.6	No. of students in secondary section	„
12.7(a)	No. of Colleges for general education (including oriental students)	„
12.7(b)	No. of University Teaching department	„

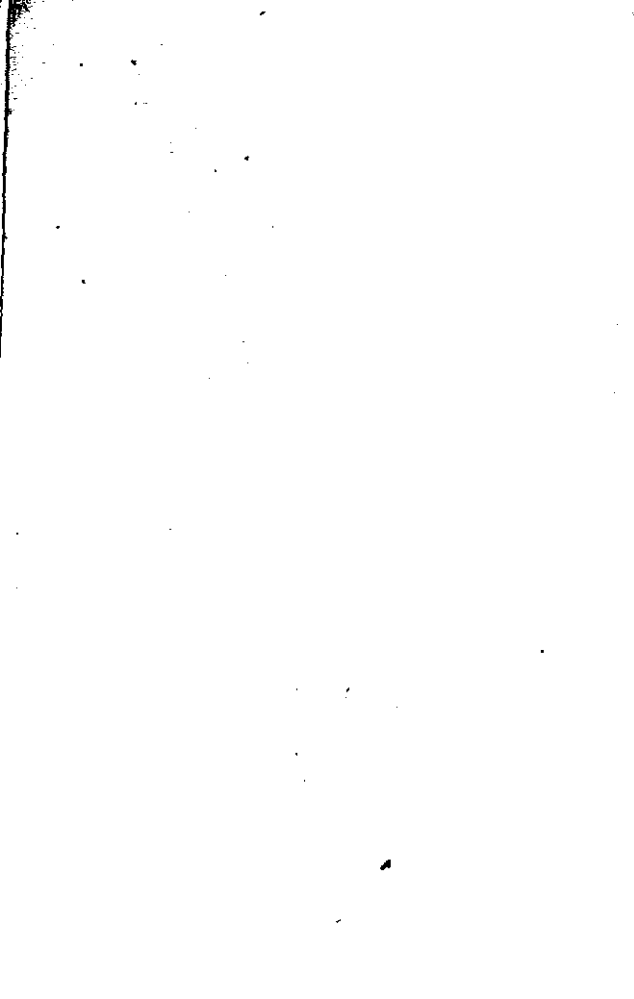
4	5	6	7
1965-66	20	207	9.66
"	40162	747872	5.37
"	586.07	8501.36	6.89
"	5728	188437	3.04
"	13133	209494	6.27
"	777	5564	13.96
"	526	15305	3.44
"	9001	157156	5.73
"	211	2843	7.42
"	1160	10825	10.72
"	11160	125104	8.92
"	216859	2521182	8.60
"	67156	1031511	6.51
"	37359	615143	6.07
"	5	106	4.72
"	...	26	—

1	2	3
12.7(c) No. of Colleges for Professional education-		No.
12.8(a) No. of Scholars in Colleges for general education including oriental studies		”
12.8(b) No. of Scholars in University teaching department		”
12.8(c) No. of Scholars in Colleges for professional education		”
12.9 Percentage of literate to the total population		%

---

4	5	6	7
1965-66	2	37	5.41
„	4733	103215	4.59
„	...	734	—
„	717	12820	5.59
1961	34.05	46.9	—

---





## I. AREA, POPULATION AND HOUSING

This Section deals with the area, population and housing of Palghat District and their distribution and characteristic according to 1961 Census. All the important aspects such as sex distribution, Density, Religion, Mother-tongue, Rural-Urban population, Number of occupied houses, Number of persons per occupied houses, Growth of housing distribution of households according to material of roof, wall, number of rooms, tenure etc. have been covered.

## I. AREA, POPULATION

Table

AREA AND

Taluk	Area	
	Sq. Miles	Sq. K. M.
1	2	3
Alathur	220.9	572.1
Chittur	446.3	1155.9
Ottapalam	252.1	653.0
Palghat	277.4	718.5
Perinthalmanna	620.9	1608.1
Ponnani	162.0	419.6
Palghat District	1979.0	5127.2

Source : Superintendent of

## AND HOUSING

## 1.1 (a)

## POPULATION

Population 1961	Density		Sex Ratio (Female per 1000 males)
	Per. Sq. Miles	Per. Sq. K. M.	
4	5	6	7
241496	1093	422	1107
272272	610	236	1041
324563	1287	497	1112
296217	1068	412	1057
339108	546	211	1069
302910	1870	722	1132
1776566	897	346	1086

Census Operations, Kerala.

## I. AREA, POPULATION

Table

RURAL AND URBAN

Taluk/District	Male Population		
	Rural	Urban	Total
1	2	3	4
Alathur	114643	...	114643
Chittur	114833	18598	133431
Ottapalam	137559	16145	153704
Palghat	105164	38813	143977
Perinthalmanna	163903	...	163903
Ponnani	131149	10939	142088
Palghat District	767251	84495	851746

Source : Superintendent of

## AND HOUSING

## 1.1 (b)

## POPULATION (1961 Census)

Female Population			Sex Ratio	
Rural	Urban	Total	Rural	Urban
5	6	7	8	9
126853	...	126853	1107	...
119044	19797	138841	1037	1064
154146	16713	170859	1121	1035
113433	38807	152240	1079	1000
175205	...	175205	1069	...
148784	12038	160822	1134	1100
837465	87355	924820	1092	1034

Census Operations, Kerala.

## I. AREA, POPULATION

Table

## POPULATION BY

Taluk/District	High Land	
	Actual	Percentage
1	2	3
Alathur	100653	17.81
Chittur	140560	24.88
Ottapalam	...	...
Palghat	260846	46.16
Perinthalmanna	62983	11.15
Ponnani	...	...
Palghat District	565042	100.00

Source : Superintendent of

## AND HOUSING

## 1.2

## NATURAL REGIONS (1961)

Mid Land		Low Land	
Actual	Percentage	Actual	Percentage
4	5	6	7
140843	12.50	...	...
131712	11.69	...	...
324563	28.80	...	...
35371	3.14	...	...
276125	24.51	...	...
218197	19.36	84713	100.00
1126811	100.00	84713	100.00

Census Operations, Kerala.

# I. AREA, POPULATION AND HOUSING

Table 1.3 (a)

## GROWTH RATE OF POPULATION

Taluk/District	Decennial growth rate 1951-61	Percentage increase 1951-61
1	2	3
Alathur	12.88	54.81
Chittur	12.37	63.21
Ottappalam	11.34	61.84
Palghat	18.31	48.55
Perinthalmanna	20.27	74.82
Ponnani	15.63	72.12
Palghat District	13.51	62.58

Source: Superintendent of Census Operations, Kerala.





## I. AREA,

## Table

## TALUK-WISE GROWTH OF

Taluk/District	1921			
	Persons	Decade varia- tion	%Decade varia- tion	Per- sons
1	2	3	4	5
Alathur	155991	...	...	169460
Chittur	166828	...	...	184612
Ottapalam	200545	...	...	221549
Palghat	199409	...	...	216625
Perinthalmanna	193972	...	...	214288
Ponnani	175983	...	...	206747
Palghat District	1092723	...	...	1213281

## POPULATION AND HOUSING

## 1.3(b)

## POPULATION-1921 to 1961

1931		1941		
Decade varia- tion	% Decade varia- tion	Persons	Decade varia- tion	% Decade varia- tion
6	7	8	9	10
+ 13469	+ 8.63	181058	+ 11598	+ 6.84
+ 17789	+10.66	199611	+ 14899	+ 8.07
+ 21004	+10.47	247769	+ 26220	+11.83
+ 17216	+ 8.63	231453	+ 14828	+ 6.85
+ 20316	+10.47	239649	+ 25361	+11.84
+ 30764	+17.48	226700	+ 19953	+ 9.65
+120558	+11.03	1326140	+112859	+ 9.33

## I. AREA, POPULATION

Table

Taluk/District	1951		
	Persons	Decade varia- tion	% Decade varia- tion
1	11	12	13
Alathur	213942	+ 32884	+18.16
Chittur	242301	+ 42797	+21.45
Ottapalam	291505	+ 43736	+17.65
Palghat	273489	+ 42036	+18.16
Perinthalmanne	281952	+ 42303	+17.65
Ponnani	261971	+ 35271	+15.56
Palghat District	1565167	+239027	+18.02

Source : Superintendent of

## AND HOUSING

No. 1.3 (b) Contn...

1961		
Persons	Decade variation	% Decade variation
14	15	16
241496	+27554	+12.88
272272	+29964	+12.37
324563	+33058	+11.34
296217	+22728	+ 8.31
339108	+57156	+20.27
302910	+40939	+15.63
1776566	+211399	+13.51

Census Operations, Kerala.

## I. AREA, POPULATION

Table

## VARIATION OF RURAL

Census Year	Rural	
	Number	Percentage decade variation
1	2	3
1901	908156	...
1911	973257	+7.17
1921	1011043	+3.88
1931	1123579	+11.13
1941	1208878	+7.59
1951	1394771	+15.38
1961	1604716	+15.05

Source : Superintendent of

## AND HOUSING

## 1.4

## AND URBAN POPULATION

Number	Urban	Total population	Percentage decade variation
	Percentage decade variation		
4	5	6	7
69056	...	977212	...
77967	+12.90	1051224	+7.57
81680	+4.76	1092723	+3.95
89702	+9.82	1213281	+11.03
117262	+30.72	1326140	+9.30
170396	+45.31	1565167	+18.02
171850	+0.85	1776566	+13.51

Census Operations, Kerala.

# I AREA, POPULATION AND HOUSING

Table No. 1.5

## RATE OF POPULATION GROWTH COMPARED WITH ADJACENT DISTRICTS

District	Rate of Growth		Average annual growth rate 1901-61
	1901-61	1951-61	
1	2	3	4
Coimbatore	92.88	12.78	1.5
Kozhikode	127.19	26.72	2.1
Nilgiris	262.60	31.30	4.4
Palghat	81.80	13.51	1.4
Trichur	148.89	20.34	2.5

Source: Superintendent of Census Operations, Kerala.



# I AREA, POPULATION AND HOUSING

Table No. 1.6

DENSITY OF POPULATION (PER SQ. K. M.) BY TALUKS

Taluk/District	1921	1931	1941	1951	1961
Alathur	273	296	317	374	422
Chittur	144	160	173	210	236
Ottapalam	307	339	380	446	497
Palghat	278	302	322	381	412
Perinthalmanna	120	133	149	175	211
Ponnani	419	493	540	624	722
Palghat District	213	237	259	305	346

Source : Superintendent of Census Operations, Kerala.

## I AREA, POPULATION

Table

## POPULATION DENSITY (PER SQ. K. M.)

Taluk/District	High-land		
	Total	Rural	Urban
1	2	3	4
Alathur	337	337	...
Chittur	154	154	...
Ottapalam	...	...	...
Palghat	405	297	2918
Perinthalmanna	69	69	...
Ponnani	...	...	...
Palghat District	203	177	2918

Source : Superintendent of

## AND HOUSING

No. 1.7

BY NATURAL REGION 1961

Mid-land			Low-land		
Total	Rural	Urban	Total	Rural	Urban
5	6	7	8	9	10
515	515	...	...	...	...
547	444	1254	...	...	...
497	470	1024	...	...	...
478	478	...	...	...	...
399	399	...	...	...	...
623	623	...	1225	969	427
493	475	1136	1225	969	427

Census Operations, Kerala.

## I AREA, POPULATION AND HOUSING

Table No. 1.8

## SEX-WISE BREAK-UP—RURAL URBAN POPULATION

Taluk/District	Rural			Urban		
	Male	Female	Total	Male	Female	Total
1	2	3	4	5	6	7
Alathur	114643	126853	241496	...	...	...
Chittur	114833	119044	233877	18598	19797	38395
Ottapalam	137559	154146	291705	16145	16713	32858
Palghat	105164	113433	218597	38813	38807	77620
Perinthalmanna	163903	175205	339108	...	...	...
Ponnani	131149	148784	279933	10939	12038	22977
Palghat District	767251	837465	1604716	84495	87355	171850

Source : Superintendent of Census Operations, Kerala.

# I AREA, POPULATION AND HOUSING

Table No. 1.9

## SEX RATIO (1901-1961)

Census Year	Total	Rural	Urban
1	2	3	4
1901	1038	1038	1041
1911	1051	1051	1049
1921	1065	1067	1039
1931	1079	1081	1049
1941	1082	1084	1057
1951	1088	1093	1051
1961	1086	1092	1034

Source: Superintendent of Census Operations, Kerala.

## I. AREA, POPULATION

Table

SEX-RATIO BY

Taluk/District	High-Land		
	Total	Rural	Urban
1	2	3	4
Alathur	1097	1097	...
Chittur	1023	1023	...
Ottapalam	...	...	...
Palghat	1047	1068	1000
Perinthalmanna	1001	1001	...
Ponnani	...	...	...
Palghat District	1044	1052	1000

Source : Superintendent of

## AND HOUSING

## 1.10

## NATURAL REGION (1961)

Mid-Land			Low-Land		
Total	Rural	Urban	Total	Rural	Urban
5	6	7	8	9	10
1114	1114	...	...	...	...
1060	1058	1064	...	...	...
1112	1121	1035	...	...	...
1135	1135	...	...	...	...
1085	1085	...	...	...	...
1131	1131	...	1134	1147	1100
1104	1107	1051	1134	1147	1100

Census Operations, Kerala.

## I. AREA, POPULATION

Table

## PERCENTAGE DISTRIBUTION OF

Age/Age group	Total	
	Percentage of males to total males	Percentage of females to total females
1	2	3
Under 1 year	3.18	2.98
1 "	2.86	2.63
2 "	3.36	3.07
3 "	2.89	2.67
4 "	3.00	2.70
5 — 9	13.92	12.46
10 — 14	13.60	12.50
15 — 19	8.81	9.20
20 — 24	7.97	8.93
25 — 29	6.85	8.03



## AND HOUSING

## 1.11

## POPULATION BY AGE GROUP

Rural		Urban	
Percentage of males to total males	Percentage of females to total females	Percentage of males to total males	Percentage of females to total females
4	5	6	7
3.23	3.01	2.78	2.66
2.89	2.66	2.55	2.33
3.41	3.10	2.98	2.82
2.92	2.69	2.62	2.44
3.03	2.72	2.65	2.46
13.98	12.47	13.32	12.39
13.62	12.49	13.43	12.65
8.75	9.15	9.41	9.66
7.88	8.92	8.80	9.00
6.80	8.02	7.24	8.12

## I. AREA, POPULATION

Table

	1	2	3
30 — 34		5.95	6.59
35 — 39		5.85	5.90
40 — 44		5.03	4.97
45 — 49		4.26	4.14
50 — 54		3.66	3.81
55 — 59		2.64	2.63
60 — 64		2.64	2.88
65 — 69		1.47	1.54
70 +		2.03	2.35
Age not stated		0.03	0.02

N = Negligible

Source: Superintendent of

## AND HOUSING

## 1.11 (Contd.)

4	5	6	7
5.90	6.58	6.40	6.70
5.84	5.89	5.96	6.01
5.01	4.96	5.21	4.98
4.24	4.14	4.45	4.19
3.66	3.80	3.62	3.90
2.65	2.62	2.61	2.76
2.64	2.88	2.60	2.91
1.48	1.54	1.40	1.57
2.04	2.34	1.97	2.45
0.03	0.02	N.	...

Census Operations, Kerala.

# I AREA, POPULATION AND HOUSING

Table 1.12

## POPULATION BY BROAD AGE GROUPS (1961) PERCENTAGE DISTRIBUTION

Category	Age group	Percentage
Infants and young children	0-4	14.7
Boys and girls	5-14	26.2
Young men and women	15-34	31.2
Middle aged men and women	35-54	18.8
Elderly persons	55 and above	9.1

Source : Superintendent of Census Operations, Kerala.

# I AREA, POPULATION AND HOUSING

Table 1.13

DISTRIBUTION OF 1000 PERSONS BY EACH SEX AND MARITAL STATUS (1961)

Marital Status	Males			Females		
	Total	Rural	Urban	Total	Rural	Urban
Never married	603	601	631	468	465	488
Married	371	373	350	381	381	382
Widowed	18	18	16	124	125	116
Divorced or Separated	7	7	3	27	28	14
Unclassified	1	1	...	N	1	...

N. Negligible

Source: Superintendent of Census Operations, Kerala.

## I AREA, POPULATION

Table

POPULATION BY

Religion	Number		
	Total	Rural	Urban
1	2	3	4
Budhist	1	1	...
Christians	33811	29637	4174
Hindus	1245031	1123389	121642
Jains	13	...	13
Muslims	497705	451686	46019
Sikhs	5	3	2
All Religions	1776566	1604716	171850

N =

Source : Superintendent of

## AND HOUSING

I.14

## RELIGION (1961)

Percentage distribution		
Total	Rural	Urban
5	6	7
N	N	...
1.90	1.85	2.43
70.08	70.00	70.78
N	...	0.01
28.02	28.15	26.78
N	N	N
100.00	100.00	100.00

Negligible

Census Operations, Kerala.

# I. AREA, POPULATION AND HOUSING

Table 1.15

## DISTRIBUTION OF PERSONS BY MOTHER-TONGUE

Sl. No.	Mother-tongue	No. of Persons	Percentage to total
1.	Malayalam	1579427	88.90
2.	Tamil	166075	9.35
3.	Telungu	22788	1.28
4.	Kannada	4995	0.28
5.	Urdu	1365	0.08
6.	Hindi	992	0.06
7.	Konkani	252	0.01
8.	Others	672	0.04
9.	Total	1776566	100.00

Source: Superintendent of Census Operations, Kerala.





## I. AREA, POPULATION

Table

TREND OF

Census Year	Persons	Males
1	2	3
1901	977212	479453
1911	1051224	512495
1921	1092723	529131
1931	1213281	583663
1941	1326140	637027
1951	1565167	749607
1961	1776566	851746

Source : Superintendent of

## AND HOUSING

## I.16

## POPULATION 1901-1961

Females	Decade variation	% Decade variation
4	5	6
497759	...	...
538729	+74012	+ 7.57
563592	+41499	+ 3.95
629618	+120558	+ 11.03
689113	+112859	+ 9.30
815560	+239027	+18.02
924820	+211399	+13.51

Census Operations, Kerala.

## I. AREA, POPULATION

Table

WORKERS AND

Taluk/District	Workers	
	Male	Female
1	2	3
Alathur	59482	43156
Chittur	74206	49599
Ottapalam	76320	39808
Palghat	75347	44198
Perinthalmanna	84360	41500
Ponnani	68670	32760
Palghat District	438385	251021

Source : Superintendent of

## AND HOUSING

I.17

## NON-WORKERS (1961)

Non-workers			
Total	Male	Female	Total
4	5	6	7
102638	55161	83697	138858
123805	59225	89242	148467
116128	77384	131051	208435
119545	68630	108042	176672
125860	79543	133705	213248
101430	73418	128062	201480
689406	413361	673799	1087160

Census Operations, Kerala.

# I. AREA, POPULATION AND HOUSING

Table 1.18

DISTRIBUTION OF 1000 PERSONS IN EACH TALUK INTO WORKERS AND NON-WORKERS  
(1961)

Taluk/District	Workers			Non-workers		
	Persons	Males	Females	Persons	Males	Females
1	2	3	4	5	6	7
Alathur	425	519	340	575	481	660
Chittur	455	556	357	545	444	643
Ottapalam	358	497	233	642	503	767
Palghat	404	523	290	596	477	710
Perinthalmanna	371	515	237	629	485	763
Ponnani	335	483	204	665	517	796
Palghat District	388	515	271	612	485	729

Source: Superintendent of Census Operations, Kerala.



# I. AREA, POPULATION AND HOUSING

Table 1.20

## TOWNS AND VILLAGES-1961

Name of Taluks	Towns		Number of (Revenue) villages
	Municipal	Non-Municipal	
1	2	3	4
Alathur	...	...	47
Chittur	Chittur-Thathamangalam	Nemmara	39
Ottapalam	...	{ Pattambi Ottapalam Shoranur	61
Palghat	Palghat	...	52
Perinthalmanna	...	...	59
Ponnani	...	Ponnani	46

Source: Superintendent of Census Operations, Kerala.



# I. AREA, POPULATION AND HOUSING

Table 1.21

## AREA AND POPULATION OF MUNICIPALITIES (1961 Census)

Municipalities	Area		Population	Density	
	Sq Miles	Sq. K.M.	1961 ('000)	Per Sq. Miles	Per Sq. K.M.
1	2	3	4	5	6
Chittur- Thathamangalam	5.68	14.71	26.46	4658	2334
Palghat	10.27	26.60	77.62	7557	1799

Source: Superintendent of Census Operationr, Kerala.

# I. AREA, POPULATION AND HOUSING

Table 1.22

## ESTIMATED POPULATION OF PALGHAT DISTRICT AND KERALA STATE AS ON 1st MARCH

(Population in lakhs)

Sl. No.	Year	Palghat District	Kerala State
1	2	3	4
1	1961	17.77	169.04
2	1962	18.06	173.49
3	1963	18.35	177.95
4	1964	18.64	182.42
5	1965	18.90	186.89
6	1966	19.17	191.37

Source: Bureau of Economics and Statistics, Kerala, Trivandrum.



## I. AREA,

## Table

## SEX RATIO OF WORKERS BY

District/Taluk	Total workers	Cultivators	Agricultural labourers	Engaged in mining, fishing, forestry, hunting etc.
1	2	3	4	5
Alathur	726	554	1463	54
Chittur	668	487	1270	424
Ottapalam	522	428	1083	96
Palghat	587	560	1462	76
Perinthalmanna	492	376	1057	140
Ponnani	477	287	1349	102
Palghat District	573	433	1289	166

Source: Superintendent of

## POPULATION AND HOUSING

1.23

## INDUSTRIAL CLASSIFICATION (1961)

At household industry	In manufacture other than household industry	In construction	In trade and commerce	In transport, storage and communication	In other services	Total non-workers
6	7	8	9	10	11	12
660	93	81	106	13	525	1517
655	60	214	85	13	466	1507
837	132	25	49	11	526	1964
655	78	114	81	22	463	1574
623	169	48	70	7	503	1681
1094	467	26	21	4	495	1744
733	154	125	66	13	497	1630

Census Operations, Kerala.

I. AREA, POPULATION AND HOUSING  
 Table 1.24  
 SEX RATIO BY AGE-GROUP-1961

Age/Age-group	Sex Ratio
Under 1 year	1017
1	998
2	992
3	1003
4	977
5	969
6	963
7	987
8	941
9	1014
10-14	998
15-19	1134
20-24	1216
25-29	1274
30-34	1202
35-39	1094
40-44	1071
45-49	1056
50-54	1132
55-59	1080
60-64	1188
65-69	1142
70+	1256

Source : Superintendent of  
 Census Operations, Kerala.

## I. AREA, POPULATION AND HOUSING

Table 1.25

## SEX RATIO BY RELIGION-1961

Religion	Sex Ratio in	
	Palghat District	Kerala State
Christians	966	995
Hindus	1098	1028
Muslims	1064	1032

Source : Superintendent of  
Census Operations, Kerala.

# I. AREA, POPULATION AND HOUSING

Table 1.26

PERCENTAGE DISTRIBUTION OF POPULATION BY MARITAL STATUS AND SEX-1961

Marital Status	Palghat District			Kerala State		
	Total	Male	Female	Total	Male	Female
1	2	3	4	5	6	7
Never married	53.2	60.3	46.8	56.67	62.41	51.05
Married	37.6	37.1	38.1	35.84	35.20	36.47
Widowed	7.5	1.8	12.4	5.92	1.71	10.04
Divorced or separated	1.7	0.7	2.7	1.54	0.65	2.41
Unclassified status	N.	0.1	N.	0.03	0.03	0.03
<b>Total</b>	<b>100.0</b>	<b>100.0</b>	<b>100.0</b>	<b>100.00</b>	<b>100.00</b>	<b>100.00</b>

Source : Superintendent of Census Operations, Kerala.





## I. AREA, POPULATION

Table

## PERSONS NOT AT WORK CLASSIFIED

Sl. No.	Activity
1	2
1.	Full-time student
2.	Household duties
3.	Dependents, infants and disabled
4.	Retired, Rentier or independent means
5.	Beggars, Vagrant etc.
6.	Inmates of Penal, mental and charitable institutions
7.	Persons seeking employment not for the first time
8.	Person employed before, but now out of employment and seeking work
9.	Total non-working population

N—Negligible

Source: Superintendent of

## AND HOUSING

1.27

BY SEX AND TYPE OF ACTIVITY-1961

Total			Percentage		
Person	Male	Female	Person	Male	Female
3	4	5	6	7	8
255497	149967	105540	23.50	36.28	15.66
289546	...	289546	26.63	...	42.97
512120	243342	268778	47.11	58.87	39.89
13468	7836	5632	1.24	1.89	0.84
5863	3132	2731	0.54	0.76	0.41
112	66	46	0.01	0.02	N
8144	6814	1330	0.75	1.65	0.20
2410	2214	196	0.22	0.53	0.03
1087160	413361	673799	100.00	100.00	100.00

Census Operations, Kerala.

## I. AREA, POPULATION

Table

## DISTRICT-WISE AREA AND

District	*Area	
	Sq. miles	Sq. K.M.
1	2	3
Trivandrum	844.00	2185.9
Quilon	1827.3	4732.7
Alleppey	708.1	1834.0
Kottayam	2455.6	6360.0
Ernakulam	1289.5	3339.8
Trichur	1137.0	2944.8
Palghat	1979.6	5127.2
Kozhikode	2570.2	6656.8
Cannanore	2191.3	5675.5
Kerala	15002.6	38856.7

\* Figures furnished by the State  
Source : Superintendent of

## AND HOUSING

1.28

## POPULATION-KERALA-1961

Population 1961	Density per		Sex Ratio
	Sq. Mile	Sq. K. M.	
4	5	6	7
1744531	2067	798	1005
1941228	1062	410	996
1811252	2558	988	1027
1732880	706	273	963
1859913	1442	557	997
1639862	1442	557	1090
1776566	897	346	1086
2617189	1018	393	1012
1780294	812	314	1035
16903715	1127	435	1022

Survey Department  
Census Operations, Kerala.

## I. AREA, POPULATION

Table

## NO. OF OCCUPIED RESIDENTIAL HOUSES - 1961

Taluk/District	No. of Houses	
	Rural	Urban
1	2	3
Alathur	41041	...
Chittur	41951	6778
Ottapalam	50192	5487
Palghat	38945	12761
Perinthalmanna	59210	...
Ponnani	46208	3021
Palghat District	277547	28047

Source: Superintendent of

## AND HOUSING

1.29

## RURAL AND URBAN IN PALGHAT DISTRICT

No. of Households			
Total	Rural	Urban	Total
4	5	6	7
41041	44413	...	44413
48729	45343	7174	52517
55679	51897	5660	57557
51706	41731	13936	55667
59210	60812	...	60812
49229	47250	3137	50387
305594	291446	29907	321353

Census Operations, Kerala.

## I. AREA, POPULATION

Table

## VARIATION IN OCCUPIED CENSUS HOUSES

Census Year	Total	
	Number	Percentage decade variation
1	2	3
1921	204780	...
1931	219036	+6.96
1941	243329	+11.09
1951	253347	+4.12
1961	305594	+20.62

Source: Superintendent of



## AND HOUSING

1.30

IN PALGHAT DISTRICT - 1961

Rural		Urban	
Number	Percentage decade variation	Number	Percentage decade variation
4	5	6	7
193291	...	11489	...
206619	+6.90	12417	+8.08
226069	+9.41	17260	+39.00
231351	+2.34	21996	+27.44
277547	+19.97	28047	+27.51

Census Operations, Kerala.

# I AREA, POPULATION AND HOUSING

Table 1.31

NO. OF PERSONS PER 1000 OCCUPIED HOUSES FROM 1921 TO 1961 IN PALGHAT DISTRICT

Census Year	Persons per '000 occupied houses	
	Total	Urban
1921	5336	7109
1931	5539	7224
1941	5450	6794
1951	6178	7747
1961	5813	6127

Source: Superintendent of Census Operations, Kerala.

# I AREA, POPULATION AND HOUSING

Table 1.32

PERSONS PER OCCUPIED CENSUS HOUSE BY TALUK IN PALGHAT DISTRICT - 1961

Taluk	Persons per occupied census house		
	Total	Rural	Urban
Alathur	5.87	5.87	...
Chittur	5.56	5.56	5.60
Ottapalam	5.81	5.80	5.84
Palghat	5.69	5.60	5.94
Perinthalmanna	5.71	5.71	...
Ponnani	6.14	6.05	7.48

Source : Superintendent of Census Operations, Kerala.

## I. AREA, POPULATION

Table

**DISTRIBUTION OF CENSUS HOUSES BY CATEGORIES**

---

Category of census houses

---

1

---

Total No. of census houses

Vacant census houses

Occupied census houses used as :

- i) Dwellings
- ii) Shop-cum dwellings
- iii) Workshop-cum dwellings
- iv) Hotels, sarais, Dharmasalas, Tourist houses and Inspection houses.
- v) Shops excluding eating houses
- vi) Business houses and offices
- vii) Factories, workshops and worksheds

## AND HOUSING

1.33

AND BY RURAL AND URBAN AREAS - 1961

Distribution of '000 census houses			Distribution of '000 census houses between rural and urban	
Total	Rural	Urban	Rural	Urban
2	3	4	5	6
1000	1000	1000	896	104
83	79	115	857	143
836	851	710	912	88
7	7	8	880	120
4	2	14	604	396
N	N	2	373	627
25	21	62	743	257
5	4	16	679	321
13	10	34	717	283

## I. AREA, POPULATION

Table

---

**1**

---

- viii) Schools and other educational institution including Training classes coaching and shop classes
  - ix) Restaurants, sweetmeat shops and eating places
  - x) Places of entertainment and community gathering
  - xi) Public Health and Medical Institutions, hospitals, Health Centres, Doctor's Clinics Dispensaries etc.
  - xii) Others
- 

N = Negligible

Source : Superintendent of

## AND HOUSING

## 1.33 (Contd.)

2	3	4	5	6
4	4	4	895	105
15	15	11	919	81
N	N	1	591	409
1	1	3	754	246
7	6	20	719	281

Census Operations, Kerala.

# I. AREA, POPULATION & HOUSING

Table 1.34

DISTRIBUTION OF '000 HOUSEHOLDS ACCORDING TO TENURE STATUS - 1961

Taluk/District	Total		Rural		Urban	
	Owned	Rented	Owned	Rented	Owned	Rented
1	2	3	4	5	6	7
Alathur	959	41	959	41	...	...
Chittur	738	262	730	270	792	208
Ottapalam	935	65	967	33	642	358
Palghat	840	160	901	99	645	355
Perinthalmanna	944	56	944	56	...	...
Ponnani	893	107	895	105	862	138
Palghat District	885	115	902	98	703	297

Source: Superintendent of Censns Operations, Kerala.





## I. AREA, POPULATION

Table

TALUK-WISE DISTRIBUTION OF '000 HOUSEHOLDS BY DWELLINGS IN PALGHAT

Material of wall	Palghat District		Alathur		Chittur	
	Rural	Urban	Rural	Urban	Rural	Urban
1	2	3	4	5	6	7
Grass, leaves, reeds or bamboo	53	37	15	...	59	23
Timber	3	N.	2	...	16	...
Mud	754	552	841	...	706	613
Unburnt bricks	3	...	19	...	...	...
Burnt bricks	28	104	102	...	41	357
Corrugated iron sheet or other metal sheet	N	...	...	...	2	...
Stone	159	307	21	...	176	7
All other materials	N	...	...	...	...	...

N = Negligible

Source: Superintendent of

## AND HOUSING

1.35

PREDOMINANT MATERIAL OF WALL OF THEIR  
DISTRICT-1961

Ottapalam		Palghat		Perinthal- manna		Ponnani	
Rural	Urban	Rural	Urban	Rural	Urban	Rural	Urban
8	9	10	11	12	13	14	15
29	10	20	11	103	...	73	229
N.	1	1	N.	1	...	N.	...
818	634	870	544	626	...	712	301
N.	...	1	...	N	...	N.	...
1	22	41	29	N	...	1	...
N	...	N	...	...	...	...	...
152	333	67	416	270	...	214	470
...	...	...	...	N	...	...	...

## I. AREA, POPULATION

Table

TALUK-WISE DISTRIBUTION OF '000 HOUSEHOLDS BY DWELLINGS IN PALGHAT

Material of roof	Palghat District		Alathur		Chittur	
	Rural	Urban	Rural	Urban	Rural	Urban
1	2	3	4	5	6	7
Grass, leaves, reed, thatchwood and bamboo	667	335	530	...	609	400
Corrugated iron, Zinc, or other metal sheet	2	...	1	...	12	...
Tiles, Slate and shingle	331	663	469	...	379	600
Asbestos cement sheets	N	N	...	...	...	...
Concrete & stone slates	N	2	...	...	N	...

N = Negligible

Source: Superintendent of

## AND HOUSING

1.36

PREDOMINANT MATERIAL OF THE ROOF OF THEIR  
DISTRICT - 1961

Ottapalam		Palghat		Perinthal- manna		Ponnani	
Rural	Urban	Rural	Urban	Rural	Urban	Rural	Urban
8	9	10	11	12	13	14	15
662	345	503	202	763	...	874	744
...	...	N	...	1	...	...	...
338	654	494	794	236	...	126	254
...	...	2	1	N	...	N	...
...	1	1	3	N	...	N	2

Census Operations, Kerala.

# I. AREA, POPULATION AND HOUSING

Table 1.37

DISTRIBUTION OF '000 HOUSEHOLDS BY NUMBER OF ROOMS OCCUPIED IN  
PALGHAT DISTRICT - 1961

Taluk/District	No. of regular room	One room	Two rooms	Three rooms	Four rooms	Five rooms or more
1	2	3	4	5	6	7
Alathur	11	473	255	158	47	56
Chittur	13	639	187	95	31	35
Ottapalam	20	343	333	131	83	90
Palghat	8	463	244	157	62	66
Perinthalmanna	13	502	275	117	45	48
Ponnani	9	186	471	206	58	70
Palghat District	13	435	294	142	55	61

Source: Superintendent of Census Operations, Kerala.

# I. AREA, POPULATION AND HOUSING

Table 1.38

NUMBER OF PERSONS PER ROOM AND PERSONS PER HOUSEHOLD IN  
PALGHAT DISTRICT - 1961

Number of rooms	No. of persons per room			No. of persons per households		
	Total	Rural	Urban	Total	Rural	Urban
1	2	3	4	5	6	7
One room	4.45	4.41	4.76	4.45	4.41	4.76
Two rooms	2.82	2.80	2.97	5.63	5.61	5.94
Three rooms	2.11	2.09	2.27	6.32	6.28	6.82
Four rooms	1.70	1.69	1.81	6.81	6.76	7.23
Five rooms and more	1.31	1.32	1.20	7.91	7.90	7.96
Total	2.62	2.61	2.69	5.41	5.38	5.72

Source : Superintendent of Census Operations, Kerala.

# I. AREA, POPULATION AND HOUSING

Table 1.39

NUMBER OF OCCUPIED RESIDENTIAL HOUSES PER SQUARE K. M.  
1901 to 1961- KERALA STATE

District/State	1091	1911	1921	1931	1941	1951	1961
1	2	3	4	5	6	7	8
Trivandrum	40	47	54	67	83	100	132
Quilon	19	21	29	36	45	54	70
Alleppey	80	90	96	114	129	144	171
Kottayam	14	17	19	25	29	32	47
Ernakulam	38	43	47	60	66	74	90
Trichur	39	44	48	56	65	74	90
Palghat	35	37	40	43	47	49	60
Kozhikode	31	34	37	41	45	49	64
Cannanore	24	26	27	30	34	37	49
Kerala	30	34	37	44	51	57	72

Source : Superintendent of Census Operations, Kerala.



## II. RAINFALL

The meteorological data given in this part of the abstract relate to the rainfall in Palghat District. The average annual and monthly rainfall in rain recording stations, monthly rainfall from 1963 to 1966 (monthwise) and the average annual rainfall for the district as compared to the State are also given.

## II. RAINFALL

Table 2.1

### AVERAGE ANNUAL RAINFALL AT RAIN RECORDING CENTRES

Name of Centres	Annual Rainfall (M.M)		Average monthly Rainfall (M.M)	
	1965	1966	1965	1966
Alathur	1601.7	1977.1	133.4	164.8
Cherplacherry	1729.5	1919.2	144.1	159.9
Chittur	1242.0	1316.0	103.5	109.7
Mannarghat	1858.0	1808.9	154.8	150.7
Ottapalam	1642.2	1439.8	136.9	119.9
Palghat	1529.3	1600.0	127.4	133.3
Parli	2366.8	2394.5	197.2	199.5
Perinthalmanna	2538.5	1525.9	211.5	127.1
Ponnani	2049.7	2439.6	170.8	203.3

Source: State Observatory, Trivandrum

## II. RAINFALL

Table 2.2

AVERAGE MONTHLY RAINFALL IN THE DISTRICT (m.m)

Month	1963	1964	1965	1966
January	2.8	Nil	Nil	Nil
February	22.2	"	"	"
March	87.8	85.4	9.4	48.5
April	114.0	58.8	136.5	63.9
May	119.8	99.2	120.7	98.3
June	305.2	376.9	465.6	290.4
July	588.1	604.9	440.3	557.2
August	427.3	593.6	239.6	130.7
September	152.1	304.3	123.9	189.7
October	234.7	384.8	193.5	364.8
November	63.1	208.3	96.3	187.1
December	28.0	13.9	86.6	20.4

Source: Bureau of Economics and Statistics, Trivandrum.

## II. RAINFALL

Table 2.3

AVERAGE ANNUAL RAINFALL (m.m) YEARLY (JULY TO JUNE)

Place	No. of rain Recording Stations as on 31-3-'66	1963-64	1964-65	1965-66
Palghat District	9	2113.6	2842.0	1687.3
Kerala State	81	2365.2	3169.3	2209.1

Source: Bureau of Economics and Statistics, Trivandrum,

### III. AGRICULTURE

The Statistics relating to agriculture have been dealt with in this Section. Area under important crops, production of important crops, agricultural machinery and implements and production of important crops for the district as well as for the State are given. Classification of Area, soil and other details relevant to agriculture have also been included.

III.

Table

**CLASSIFICATION OF AREA (area in**

---

**Classification**

---

**Total Geographical area according to Village papers**

**Forest**

**Land put to non-agricultural uses**

**Barren and uncultivable land**

**Permanent pastures & other grazing land**

**Land under miscellaneous tree crops, not included in net area sown**

**Cultivable waste**

**Fallow land other than current fallow**

**Current fallow**

**Net area sown**

**Area sown more than once**

**Total cropped area**

---

**Source: Bureau of Economics &**

## AGRICULTURE

## 3.1

Hects.) YEAR-JULY TO JUNE

1963-64	1964-65	1965-66
510424	510424	510424
99664	99663	99663
61600	61600	61600
28094	28095	27800
6266	6266	5000
32332	30990	30995
21788	20783	20705
5625	5658	5115
8600	9341	8760
246455	248028	250786
77975	85077	87439
324430	333105	338225

Statistics, Trivandrum.

### III. AGRICULTURE

Table 3.2

#### AREA UNDER IMPORTANT CROPS (AREA IN HECTS.)

Crops	Palghat District		Kerala State	
	1964-65	1965-66	1964-65	1966-66
Rice	194666	195121	801121	802329
Pulses	12786	12509	43595	43312
Sugar crops	8675	3908	14870	14769
Pepper	3480	3480	99552	99695
Ginger	1928	1870	11973	11847
Turmeric	1329	1329	4614	4464
Cardamom	1847	1847	28684	28684



### III. AGRICULTURE

Table 3.2 (Contd.)

Crops	Palghat District		Kerala State	
	1964-65	1965-66	1964-65	1965-66
Betel nuts	4342	4823	59488	64478
Mangoes	5041	4653	63317	62217
Bananas (including plantain)	8903	8797	45199	47779
Cashewnut	8012	8028	85974	87365
Tapioca	6276	6476	209371	229684
Coconut	21589	22903	558991	586313
Tea	570	570	39356	39470
Coffee	2369	3285	21733	23601
Rubber	7296	7384	146952	149634

Source: Bureau of Economics and Statistics, Kerala, Trivandrum.

## PRODUCTION OF

Crops	Unit
Rice	Tonnes
Pulses	Tonnes
Sugarcane	Tonnes
Pepper	Tonnes
Ginger	Tonnes
Turmeric	Tonnes
Cardamom	Tonnes
Betelnuts	M. nuts
Banana	Tonnes
Other plantain	Tonnes
Tapioca	Tonnes
Coconut	M. nuts
Cotton ( <i>Bales of 180 Kg.</i> )	Tonnes
Tea	Tonnes
Coffee	Tonnes
Rubber	Tonnes

\* Using the yield rates obtained by  
Source: Bureau of Economics &

## AGRICULTURE

## 3.3

## IMPORTANT CROPS

Palghat District		Kerala State	
1964-65	1965-66	1964-65	1965-66
343940	320120	1121383	997489
5052	4851	17061	16901
2751	3300	44034	40948
502	487	22228	21685
1693	1685	11328	11190
1000	1000	3910	3766
104*	104	1606	1606
548	609	8945	9681
4095	3322	78135	77421
63692	63692	263251	283701
78764	67027	2763197	3095658
99	90	3278	3293
8003	6648	9851	6933
726	684	42075	39154
1947	1947	9685	9878
1275	1923	40065	46953

I. C. A. R. surveys viz. 56 Kg./Hectare  
Statistics, Trivandrum.

## III. AGRICULTURE

Table 3.4

INDEX NUMBERS OF AGRICULTURAL PRODUCTION  
(Base 1956-57) = 100 (Kerala State)

Item	1960-61	1964-65	1965-66
All Crops	112.1	120.0	118.5 ❖
Food grains	119.8	125.8	112.1
Cereals	120.1	126.1	112.3
Paddy	120.2	126.3	112.4
Jowar	72.2	63.4	51.1
Ragi	117.6	109.6	104.1
Pulses	93.9	91.7	90.5
Non food grains	108.9	117.6	121.2 ❖
Oil seed	102.3	104.7	105.5
Coconut	102.5	104.3	104.8
Groundnut	86.8	137.3	158.6
Sesamum oil	40.1	37.2	36.7
Lemongrass oil	168.4	157.7	157.7
Fibres	106.1	98.5	69.3
Cotton	106.1	98.5	69.3

❖ Revised

## III. AGRICULTURE

Table 3.4 (Contd.)

Item	1960-61	1964-65	1965-66
Plantain crops	112.3	141.1	144.9 ❖
Tea	116.3	121.1	112.7 ❖
Coffee	110.3	144.2	147.1
Rubber	106.4	185.0	216.8
Miscellaneous crops	114.6	119.2	126.5
Sugarcane	106.4	123.0	114.4
Pepper	99.2	81.6	79.6
Cardamom	100.2	100.4	100.4
Ginger	103.6	104.1	102.9
Turmeric	99.7	93.2	89.8
Arecanut	116.9	135.0	146.1
Banana	102.2	122.4	121.3
Cashewnut	144.2	164.4	167.0
Tobacco	150.4	137.4	136.0
Tapioca	116.4	110.5	123.8

❖ Revised

Source: Bureau of Economics &amp; Statistics,

Trivandrum.

III.

Table

## ESTIMATED MEAN YIELD OF DRY PADDY

1964-65

Taluk/District	1964-65			
	Virippu		Mundakan	
	Cropped area	Mean yield of dry paddy	Cropped area	Mean yield of dry paddy
Alathur	20271	2353	15902	3228
Chittur	21000	2732	17643	2911
Ottapalam	18118	2631	11057	2554
Palghat	26358	2818	15252	3135
Perinthalmanna	17666	2052	11206	2664
Ponnani	12130	1217	5265	2275
Palghat District	115543	2406	76325	2890

Source : Bureau of Economics &amp;

## AGRICULTURE

3.5

IN KG./HECT. (area in Hects.)

1965-66							
Punja		Virippu		Mundakan		Punja	
Cropped area	Mean yield of dry paddy	Cropped area	Mean yield of dry paddy	Cropped area	Mean yield of dry paddy	Cropped area	Mean yield of dry paddy
...	...	20291	2767	15902	2368	...	...
...	...	21000	2956	18313	2088	...	...
...	...	18118	2796	11057	1914	...	...
...	...	26358	3013	15237	2667	...	...
...	...	17666	2428	11132	2091	...	...
2978	1809	12130	1525	5112	1583	2798	2094
2798	1809	115563	2680	76760	2203	2728	2094

Statistics, Trivandrum.

### III. AGRICULTURE

Table 3.6

#### CLASSIFICATION OF SOILS

Type of Soil	Details of distribution
i. Sandy soils	On the sea coast of Ponnani Taluk
ii. Laterite Soil	On the residuary portion of Ponnani Taluk and major portions of Ottapalam, Perinthalmanna, Palghat, Alathur, and Chittur taluk.
iii. Peaty Soil (Kari)	Small area at the Centre of Ponnani taluk
iv. Forest Soil	On the eastern region of Perinthalmanna and Ottapalam taluk and a narrow strip of land along the western boundaries of Palghat and along the southern boundary of Chittur taluk.
v. Black soil	On the eastern sector of Chittur taluk and a small region of Palghat taluk.

Source: Superintendent of Census Operations, Kerala.



## AGRICULTURE

Table 3.7

## LIST OF PADDY SEED FARM AND RESEARCH STATION

Name of Station	Taluk
Central Rice Research Station, Pattambi	Ottapalam
Rice Research Station, Coyalmanam	Alathur
Integrated Seed farm for sugarcane, groundnut and Cotton Eruthempathy	Chittoor
Agricultural Research Station for fruits, vegetables and spices Nelliampathy	Chittoor
State Seed farm, Kunnannur (Paddy)	Ponnani
State Seed farm, Alathur (Paddy)	Alathur
State Seed farm, Kongodu (Paddy)	Palghat
State Seed farm, Thavanoor (Paddy)	Ponnani
State Seed farm Ananganadi (Paddy)	Ottapalam

Source : Department of Agriculture, Kerala.

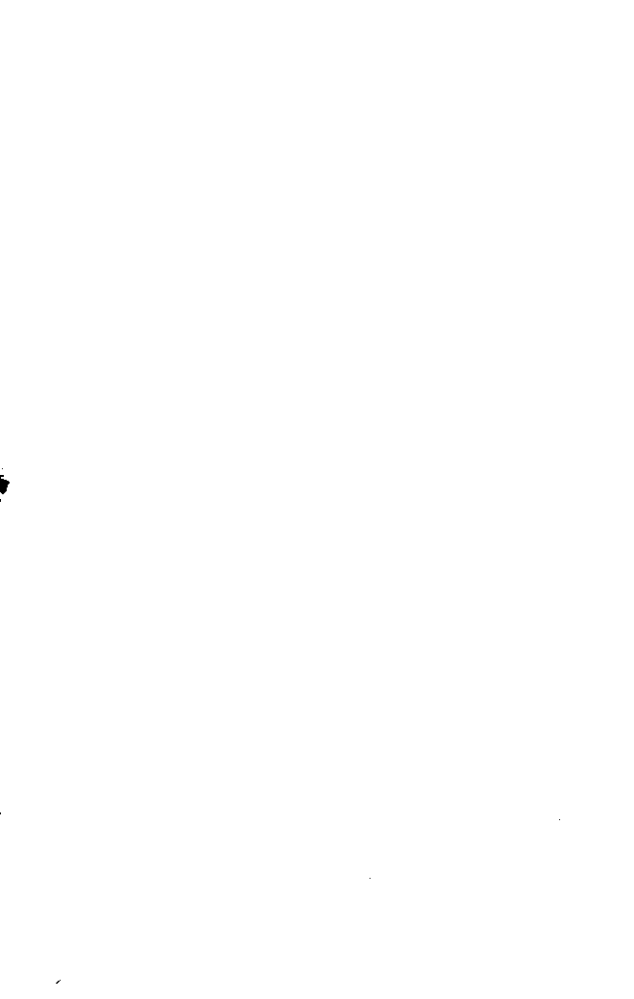
## III. AGRICULTURE

Table 3.8

IMPORTANT MARKETS FOR AGRICULTURAL  
COMMODITIES

Market	Commodities
Palghat	Paddy
	Gur
	Groundnut
	Arecanut—ripe
	Tobacco
Chittoor	Groundnut
	Palmgur
	Canegur
	Tobacco
Ponnani	Coconut
	Arecanut
	Tapioca

Source :



III.

Table

AGRICULTURAL

---

**Item**

---

**Ploughs :**

- (i) **Wooden**
- (ii) **Iron**

**Carts****Sugarcane crushers :**

- (i) **worked by power**
- (ii) **worked by bullocks**

**Oil engine with pumpsets for irrigation purpose****Electric pumps for irrigation****Tractors****Grams :**

- (i) **5 kilogram and over**
  
  - (ii) **Less than 5 kilogram**
- 

**Source : Livestock Census**

## AGRICULTURE

## 3.9

## IMPLEMENTS

Palghat District		Kerala State	
1961	1966	1961	1966
144736	134976	562281	475930
598	2069	6441	17179
8558	7440	21040	16309
63	139	175	457
86	118	1071	989
845	1481	3372	6824
353	739	2565	4869
23	108	276	418
504	48	2058	692
(More than 5 seers)		(More than 5 seers)	
194	31	2164	628
(Less than 5 seers)		(Less than 5 seers)	

in 1961 and 1966

## AGRICULTURE

Table 3.10

### AGRICULTURAL LABOURERS - 1961 CENSUS

Category	Palghat District			Kerala State		
	Male	Female	Total	Male	Female	Total
Workers as Agricultural Labourers	95035	122532	217567	516914	461482	978396

Source : Superintendent of Census Operations, Kerala.

## IV. LIVESTOCK AND VETERINARY

The information presented} in this Section relates to the Veterinary Institutions, Livestock population etc. The Source of Livestock Statistics is the quinquennial Livestock Census.

## IV. LIVESTOCK

Table

LIVESTOCK

Items	Palghat
	1961
<b>Cattle:</b>	332291
a. Males over 3 years	93511
b. Females over 3 years	127216
c. Young Stock	111564
<b>Buffaloes:</b>	178736
a. Males over 3 years	128981
b. Females over 3 years	27555
c. Young Stock	22200
<b>Sheep</b>	9935
<b>Goats</b>	174065
<b>Horses and Ponnies</b>	147



## AND VETERINAY

## 4.1

## POPULATION

District	Kerala State	
	1961	1966
322899	2753165	2856727
83082	566031	519523
123837	1161986	1219242
115980	1025148	1117962
168277	485089	471235
115534	285112	253850
27544	135113	134770
25199	64864	82615
4780	24241	11519
158317	1312262	1189218
144	408	426

## IV. LIVESTOCK

Table

Items	Palghat
	1961
Mules	4
Donkeys	202
Pigs	719
Total Livestock	696099
Poultry	906187
a. Fowls	901442
b. Ducks	4745
c. Others	Nil

Source: Livestock

## AND VETERINARY

## 4.1 (Contd.)

District	Kerala State	
	1966	1966
Nil	31	8+4 (Camel)
183	377	310
369	122381	111928
654969	4697954	4641375
944337	9106320	9908987
941566	8708664	9587286
2564	387072	318751
207	10584	2950

Census 1961 and 1966

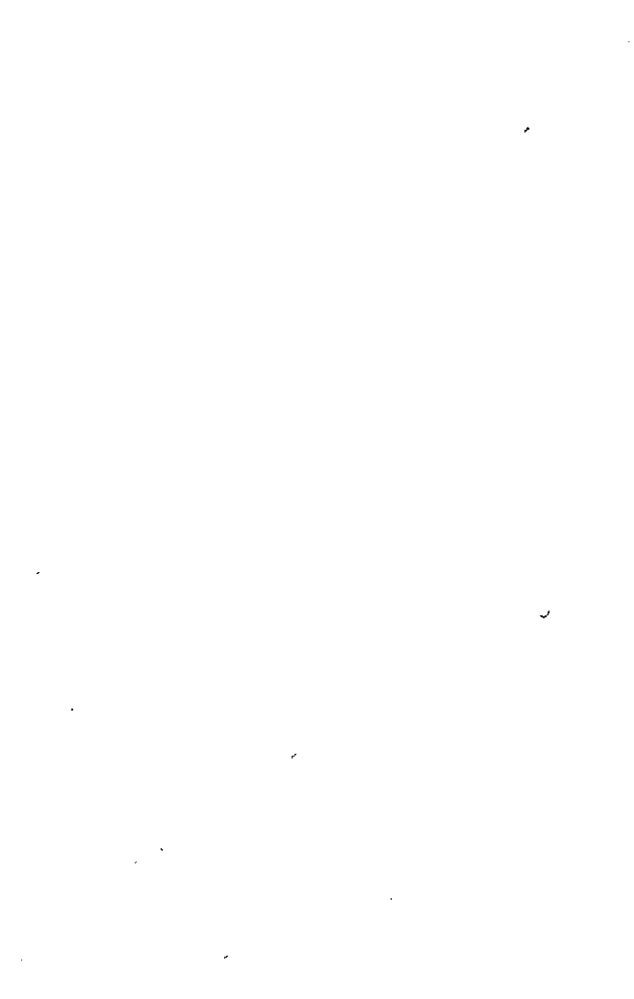
#### IV. LIVESTOCK AND VETERINARY

Table 4.2

##### VETERINARY HOSPITALS AND DISPENSARIES

District/State	Hospitals					Dispensaries					Mobile Dispensaries				
	1962-63	1963-64	1964-65	1965-66	1966-67	1962-63	1963-64	1964-65	1965-66	1966-67	1962-63	1963-64	1964-65	1965-66	1966-67
Palghat	8	8	9	9	9	13	13	9	9	10	1	1	1	1	1
Kerala	60	60	60	60	63	140	186	185	186	198	3	4	5	7	11

Source: Department of Animal Husbandry, Trivandrum.



## IV. LIVESTOCK

Table

## LIVESTOCK TREATED IN VETERINARY

---

**Descriptions**

---

1. Cases of Antimabic treatment done Post Prophylate.
  2. (a) Inpatients treated  
(b) Outpatients treated  
Total (2 a + b)
  3. No. of Obsterical cases
  4. No. of Castrations
  5. Other Operations  
Total (3 + 4 + 5)
- 

Source: Department of Animal

## AND VETERINARY

## 4.3

## INSTITUTIONS 1964-65 AND 1965-66

Palghat District		Kerala State	
1964-65	1965-66	1964-65	1965-66
495	594	6892	9310
122	129	1303	1029
122416	155782	1190471	1414165
122538	155911	1191774	1415194
2217	1443	10187	8302
13282	9465	31268	34266
3991	5295	25419	30800
19500	16203	66874	73368

Husbandry, Kerala.

## LIVESTOCK AND

Table

## LIVESTOCK SLAUGHTERED IN MUNICIPALITIES

Municipalities	1965						
	Cows	Bulls or Bullocks	Calves	Buffaloes	Sheep	Goats	Pigs
Palghat	...	..	...	...	13345	3084	...
Chittoor- Thathamangalam	...	...	...	...	564	984	...

Source :



## VETERINARY

4.4

## OF PALGHAT DISTRICT 1965 AND 1966

		1966							
Total Slaughtered	Cows	Bulls or Bullocks	Calves	Buffaloes	Sheep	Goats	Pigs	Total Slaughtered	
16429	...	...	...	...	13080	8846	...	21926	
1548	...	...	...	...	580	874	...	1454	

Municipalities.

**V. FORESTS**

This section presents the area of reserved forests and the out turn of Major Forest Produce in Palghat District.

## V. FORESTS

Table 5.1

## AREA OF RESERVED FORESTS DURING 1665-66

Category	In Palghat District (in hectares) (Nemmara and Palghat forest Division)	In Kerala State (in hectares)
Reserved Forests	85606.4	883185.6

Source: Forest Department, Government of  
Kerala.

Table

## OUI TURN OF MAJOR FOREST

District/State	1964-65			
	Timber			Fuel (M.T)
	Round log (cu.m)	Round poles (Nos.)	Sawn & squared (cu.m)	
* Palghat	11895	18841	36177.899	7613.50
Kerala	284662	249581 + 300	36418.733	58690Bags +162639.5 M.T.

\* Nemmara and Palghat  
Source: Chief Conservator

## FORESTS

5.2

PRODUCE-1964-65 and 1965-66

1965-66			
Timber			
Round log (cu.m)	Round poles (Nos.)	Sawn and squared	Fuel (M.T.)
6682	21996	10 Ton and 59336 B. G. Unit	
437677	251019	59336 B.G. Unit + 13 Tons + 3474 cu.m.	1632.55

forest division  
of Forests, Kerala.

## VI. ELECTRICITY

The number of consumers of electricity during 1960-61, 1964-65 and 1965-66 are given in this section so as to give an idea about the growth in the consumption of electricity.

# VI. ELECTRICITY

Table 6.1

## NUMBER OF CONSUMERS OF ELECTRICITY

Electricity division/State	Number of consumers (in thousands)		
	1960-61	1964-65	1965-66
Palghat Electric Division	17.98	27.59	33.51
Kerala State	174.99	280.02	324.11

Source: Chief Engineer of Electricity, Trivandrum.





## VII. INDUSTRIES, LABOUR & EMPLOYMENT

This section presents information regarding the number of registered factories, employment in these factories, employment in plantation, working of employment exchanges, Industrial disputes etc. Data for the latest period available has been incorporated. The 1961 Census figures pertaining to the various aspects of the working population of the district has also been given.

## VII. INDUSTRIES,

Table

## REGISTERED WORKING FACTORIES

---

**Industry**

---

- 1 Oil mills
  - 2 Sugar
  - 3 Cashew factories
  - 4 Other Food articles except beverages
  - 5 Coir
  - 6 Umbrellas
  - 7 Saw mills
  - 8 Other timber industries
  - 9 Printing and binding
  - 10 Rubber and Rubber Products
  - 11 Pharmaceuticals
  - 12 Soap
  - 13 Other chemicals
  - 14 Bricks and tiles
  - 15 Basic metal industries
-

## LABOUR AND EMPLOYMENT

7.1

IN PALGHAT DISTRICT

Palghat District		Kerala State	
1964	1965	1964	1965
5	7	263	272
-	1	2	3
-	-	199	209
-	-	30	30
-	-	147	139
-	-	18	19
12	13	194	222
36	36	195	207
7	7	187	194
4	5	111	125
3	2	21	20
-	8	7	31
-	-	40	28
10	10	208	221
2	2	26	32

## VII. INDUSTRIES

Table

---

Industry
16 Metal products except machinery and transport equipment
17 Agricultural implements
18 General and jobbing engineering
19 Other machinery except electrical machinery
20 Electrical machinery
21 Marine Engines building and repairing
22 Repair of motor vehicles
23 Manufacture of bicycles
24 Other industries not classified above
Total

---

Source: Bureau of Economics &amp;

## LABOUR AND EMPLOYMENT

## 7.1 (Contd.)

Palghat District		Kerala State	
1964	1965	1964	1965
20	20	79	92
4	4	7	8
2	2	52	68
3	2	18	20
3	3	21	28
-	-	7	8
11	11	133	132
-	-	3	5
112	108	704	707
234	241	2672	2820

Statistics, Kerala.

## VII. INDUSTRIES, LABOUR

Table

NUMBER OF EMPLOYEES IN

---

Industry
1 Oil mill
2 Sugar
3 Cashew factories
4 Other food articles except beverages
5 Coir
6 Umbrellas
7 Saw mills
8 Other timber industries
9 Printing and binding
10 Rubber and rubber products
11 Pharmaceuticals
12 Soap
13 Other chemicals
14 Bricks & tiles
15 Basic Metal industry

## AND EMPLOYMENT

## 7.2

## REGISTERED FACTORIES

Palghat District		Kerala State	
1964	1965	1964	1965
29	93	2034	2123
—	344	1184	1192
—	—	83850	88637
—	—	1978	1913
—	—	7159	6408
—	—	522	546
126	129	3944	4164
1600	1471	6086	6518
104	108	4350	4696
93	101	3182	3418
140	86	770	736
—	212	1275	684
—	—	1781	2733
681	661	13751	13801
63	55	2336	2191

## VII. INDUSTRIES, LABOUR

Table

---

Industry
16 Metal products except machinery and transport equipment
17 Agricultural implements
18 General and jobbing engineering
19 Other machinery except electrical machinery
20 Electrical machinery
21 Marine engines building & repairing
22 Repair of motor vehicles
23 Manufacture of bicycles
24 Other industries not classified above
Total

---

Source: Bureau of Economics &amp;



## AND EMPLOYMENT

## 7.2 (Contd.)

Palghat District		Kerala State	
1964	1965	1964	1965
1068	1075	2429	2814
236	250	304	362
63	44	2188	2542
24	23	2068	2127
77	82	805	1002
—	—	777	827
134	135	3647	3667
—	—	86	184
2583	2517	39641	42171
7021	7386	186147	195456

Statistics, Kerala.

## VII. INDUSTRIES, LABOUR AND EMPLOYMENT

Table 7.3

EMPLOYMENT IN PLANTATIONS (Daily average) - PALGHAT DISTRICT-  
ABSTRACT OF TABLES 7.3(a), 7.3(b) and 7.3(c)

Name of Plantation	1960	1961	1962	1963	1964	1965
Tea	1687	1711	1616	1553	1615	1783
Coffee	4354	4547	4566	4585	5296	5239
Rubber	3497	4073	4398	4869	5064	5123
Total	9538	10331	10580	11007	11975	12145

Source: Bureau of Economics & Statistics, Kerala.

## VII. INDUSTRIES, LABOUR AND EMPLOYMENT

Table 7.3 (a)

### EMPLOYMENT IN RUBBER PLANTATIONS-PALGHAT DISTRICT (Daily average)

Category	*Employment in Rubber Estates during					
	1960	1961	1962	1963	1964	1965
Garden Labour (Permanent)	1712	1994	2153	2384	2479	2508
Outside labour ( do. )	700	815	880	974	1013	1025
Outside labour (Temporary)	1085	1264	1365	1511	1572	1590
Total	3497	4073	4398	4869	5064	5123

\*Figures are provisional

Source: Bureau of Economics & Statistics, Kerala.

## VII. INDUSTRIES, LABOUR AND EMPLOYMENT

Table 7.3(b)

### EMPLOYMENT IN TEA PLANTATIONS—PALGHAT DISTRICT (Daily average)

Category	Employment in Tea Estates during					
	1960	1961	1962	1963	1964	1965
Garden Labour in field	1493	1431	1339	1321	1296	1215
Garden Labour in factory	100	115	112	106	95	87
Outside Labour in field	94	140	141	102	189	438
Outside Labour in factory	—	25	24	24	35	43
<b>Total</b>	<b>1687</b>	<b>1711</b>	<b>1616</b>	<b>1553</b>	<b>1615</b>	<b>1783</b>

Source: Bureau of Economics & Statistics, Kerala.

## VII. INDUSTRIES, LABOUR AND EMPLOYMENT

Table 7.3(c)

### EMPLOYMENT IN COFFEE PLANTATIONS—PALGHAT DISTRICT (Daily average)

Category	*Employment in coffee estates during					
	1960	1961	1962	1963	1964	1965
Garden Labour (Permanent)	3990	4167	254	255	266	4828
Outside Labour (Permanent)	242	253	4184	4201	4876	263
Outside labour (Temporary)	122	127	128	129	150	148
Total	4354	4547	4566	4585	5296	5239

\*Figures are provisional estimates.

Source : Bureau of Economics & Statistics, Kerala.

## VII. INDUSTRIES, LABOUR AND EMPLOYMENT

Table 7.4

### AGRICULTURAL WAGES (Daily average) IN RUPEES

Category	Year	Palghat District	Kerala State
Carpenter	1960	2.48	2.89
	1965	3.91	4.80
	1966	4.38	5.34
Mason	1960	3.26	3.10
	1965	5.01	4.73
	1966	5.23	5.26
Field Labour (Men)	1960	2.05	1.82
	1965	3.06	3.02
	1966	3.29	3.40

Note: 1966—average for 10 months.

Source: Bureau of Economics & Statistics, Kerala.

# VII. INDUSTRY, LABOUR AND EMPLOYMENT

Table 7.5

## INDUSTRIAL DISPUTES - PALGHAT DISTRICT ❖

Industry	1965			1966		
	Disputes	Number of		Disputes	Number of	
		Workers involved	Mandays lost		Workers involved	Mandays lost
1	2	3	4	5	6	7
Tiles	2	78	741	2	88	467
Plantations	4	612	2844	9	3118	5750
Others	13	3091	10834	17	3455	34485

❖ Figures are provisional

Source : Bureau of Economics & Statistics, Trivandrum.

## VII. INDUSTRIES, LABOUR

Table

## APPLICANTS ON THE LIVE REGISTER OF

---

**Occupation Category**

---

- 1 Professional, technical and related workers
- 2 Administrative, Executive and Managerial Workers
- 3 Clerical and related workers
- 4 Sales workers
- 5 Farmers, fishermen, hunters, Loggers and related workers
- 6 Miners, quarrymen and related workers
- 7 Workers in transport and communication occupation
- 8 Craftsman, production process workers and labourers not elsewhere classified
- 9 Service, sports and recreation workers
- 10 Workers not classifiable by occupation

Total

---

Source : National Employment



## AND EMPLOYMENT

## 7.6

## EMPLOYMENT EXCHANGE (Category-wise)

Palghat District		Kerala State	
1965	1966	1965	1966
321	646	11077	17178
5	5	312	486
62	60	6199	10562
—	—	11	25
15	19	1174	1716
1	—	23	9
185	224	3424	4702
319	549	11126	11705
177	474	6361	8821
5666	7024	84881	101952
6751	9001	124588	157156

Service, Trivandrum.

## VII. INDUSTRIES, LABOUR AND EMPLOYMENT

Table 7.7

### NUMBER OF APPLICANTS PLACED IN EMPLOYMENT THROUGH EMPLOYMENT EXCHANGE

Sectors	Palghat District		Kerala State	
	1964-65	1965-66	1964-65	1965-66
1. Central Government	6	3	1647	1341
2. State Government	1191	1382	10097	12401
3. Quasi Government/Local Body	109	123	2035	3048
4. Private	19	33	225	336
<b>Total</b>	<b>1325</b>	<b>1541</b>	<b>15221</b>	<b>18001</b>

Source: National Employment Service, Trivandrum.



## VII. INDUSTRIES,

Table

## WORKERS BY INDUSTRIAL CATEGORY

	Persons
	No.
Total workers	689406
As cultivators	140505
As agricultural labourers	217567
In mining, quarrying, livestock, forestry, fishery, hunting	32725
At household industry	47466
In manufacture other than household industry	38678
In construction	11158
In trade and commerce	28443
In transport storage and communication	13311
In other services	159553

Source: Superintendent of

## LABOUR &amp; EMPLOYMENT

7.8

AND SEX IN PALGHAT DISTRICT 1961

		Male		Female	
Percentage	No.	Percentage	No.	Percentage	
100.00	438385	100.00	251021	100.00	
20.39	98079	22.37	42426	16.90	
31.56	95035	21.68	122532	48.81	
4.75	28072	6.40	4653	1.85	
6.88	27388	6.25	20078	8.00	
5.61	33515	7.65	5163	2.06	
1.62	9921	2.26	1237	0.49	
4.12	26672	6.08	1771	0.71	
1.93	13138	3.00	173	0.07	
23.14	106565	24.31	52988	21.11	

Census operation, Kerala.

## VII. INDUSTRIES, LABOUR

Table

## WORKERS (EXCLUDING CULTIVATORS AND AGRICUL-

---

 Occupational Divisions
 

---

- Professional, Technical and related workers
  - Administrative, executive and managerial workers
  - Clerical and related workers
  - Sales workers
  - Farmers fishermen, hunters etc.*
  - Workers in Transport and Communication
  - Miners, quarreymen and related workers
  - Craftsmen, Production process Workers and  
Labourers not elsewhere classified
  - Services, Sports and recreation works
  - Workers not Classified by occupation
  - All Divisions
- 

Source: Superintendent of

## AND EMPLOYMENT

## 7.10

RURAL LABOURERS) BY OCCUPATIONAL DIVISION-  
1961

Workers			Percentage distribution		
Persons	Male	Female	Person	Male	Female
20997	16075	4922	6.34	6.55	5.72
13062	12175	887	3.94	4.97	1.03
8334	8100	234	2.52	3.30	0.27
28800	26904	1896	8.69	10.97	2.20
34508	29148	5360	10.41	11.88	6.23
8263	8234	29	2.49	3.36	0.03
1338	1249	89	0.40	0.51	0.10
185539	127329	58210	56.00	51.91	67.64
30014	15601	14413	9.06	6.36	16.75
479	456	23	0.15	0.19	0.03
331334	245271	86063	100.00	100.00	100.00

Census Operations, Kerala.

# VII. INDUSTRIES, LABOUR AND EMPLOYMENT

Table 7.11

## NON-WORKERS OF PALGHAT DISTRICT BY AGE AND SEX - 1961

Age/Group	Non-workers			Distribution per 1000		
	Persons	Male	Female	Persons	Male	Female
All Ages	1087160	413361	673799	1000	1000	1000
0-14	694415	345213	349202	638.74	835.14	518.26
15-34	210817	39344	171473	193.92	95.18	254.49
35-59	112104	10346	101758	103.12	25.03	151.02
60 and above	69627	18377	51250	64.04	44.46	76.06
Age not Stated	197	81	116	0.18	0.19	0.17

Source: Superintendent of Census Operations, Kerala.



# VII. INDUSTRIES, LABOUR AND EMPLOYMENT

Table 7.12

DISTRIBUTION OF 1000 PERSONS IN EACH TALUK INTO WORKERS AND NON-WORKERS  
BY SEX - 1961

District/Taluk	Workers			Non-workers		
	Person	Male	Female	Person	Male	Female
Palghat District	388	515	271	612	485	729
Alathur	425	519	340	575	481	660
Chittur	455	556	357	545	444	643
Ottapalam	358	497	233	642	503	767
Palghat	404	523	290	596	477	710
Perinthalmanna	371	515	237	629	485	763
Ponnani	335	483	204	665	517	796

Source: Superintendent of Census Operations, Kerala.

VII. INDUSTRIES, LABOUR AND EMPLOYMENT  
Table 7.13

DISTRIBUTION OF 1000 WORKERS IN EACH TALUK BY SECTORS OF INDUSTRY 1961

Taluk/District	Primary			Secondary			Tertiary		
	Person	Male	Female	Person	Male	Female	Person	Male	Female
Alathur	643	556	763	167	210	107	190	234	130
Chittur	651	561	785	147	186	88	202	253	127
Ottapalam	515	477	589	151	164	126	334	359	285
Palghat	522	416	704	163	201	98	315	383	198
Perinthalmanna	597	575	642	88	99	66	315	326	292
Ponnani	461	442	503	137	123	166	402	435	331
Palghat District	567	504	676	141	162	105	292	334	219

Source: Superintendent of Census Operations, Kerala.

## VIII. REGISTRATION

The number of Registration Offices, the nature of documents presented, the nature and number of documents registered, their value, the book-*war* details of registration and the miscellaneous work done by the registration offices of the district and the State are given in the Section.

**VIII. REGISTRATION**  
**Table 8.1**  
**REGISTRATION OF DOCUMENTS**

Sl. No.	Category	Palghat District		
		1963-64	1964-65	1965-66
1	Number of Sub-registry offices	20	20	20
2	Documents presented for registration	37436	39819	40090
Nature of Documents Presented				
3	Mortgages	6193	6846	5728
4	Sale deeds	12368	12142	13133
5	Wills	644	730	777
6	Money bonds	434	499	526
7	Other classes	17797	19602	19926
8	Documents registered	37430	39673	40162
9	Value of documents registered (Rs. in lakhs)	539.10	625.75	586.07

Source : Inspector General of Registration, Kerala.



VIII.

Table

## CATEGORY AND VALUE OF

Sl. No.	Name of Documents Registered
1	Mortgages: (a) Numbers (b) Value (Rs. in lakhs)
2	Sales Deeds: (a) Number (b) Value (Rs. in lakhs)
3	Wills
4	Money Bonds (a) Number (b) Value (Rs. in lakhs)
5	Other Classes (a) Number (b) Value (Rs. in lakhs)
6	Total (a) Number (b) Value (Rs. in lakhs)

Source: Inspector General

## REGISTRATION

## 8.2

## DOCUMENTS REGISTERED

Palghat District		Kerala State	
1963-64	1964-65	1963-64	1964-65
6193	6846	177974	184312
88.59	198.76	2156.86	2892.18
13368	12142	199492	200969
204.96	200.60	2129.70	2519.51
644	730	4620	5094
434	499	12598	12907
3.98	3.87	111.22	116.20
17791	19456	273252	287546
241.57	222.52	2730.41	2856.48
37430	39673	697986	690828
539.10	625.75	7128.19	8384.37

of Registration, Kerala.

VIII.

Table

**BOOK-WAR DETAILS**

---

**Item**

---

1. Number of Sub-Registry Offices
  2. Book-I
  3. Book-III
  4. Book-IV
  5. Total
  6. Compulsory
  7. Optional
  8. Total
- 

Source: Inspector General of



## REGISTRATION

8.3

## OF REGISTRATION

Palghat District		Kerala State	
1964-65	1965-66	1964-65	1965-66
20	20	207	207
37606	38013	656674	713181
732	777	5187	5602
1335	1372	28967	29089
39673	40162	690828	747872
34395	35181	585717	643221
5278	4981	105111	104651
39673	40162	690828	747872

Registration, Kerala.

**IX. LAW AND ORDER**

**This Section contains information relating to the number of Police Stations and Out-Posts, Sanctioned Strength of Police, Serious Crimes in the district, trend of Cognizable Offences and the Value of Property Stolen and recovered.**

**IX. LAND AND ORDER**  
**Table 9.1**

**NO. OF POLICE STATIONS AND OUT-POSTS**

Taluk/District	No. of Police Stations				No. of Out-Posts		
	1963-64	1964-65	1965-66	1963-64	1964-65	1965-66	
Alathur	2	2	2	...	...	...	
Chittur	6	6	6	2	2	2	
Ottappalam	4	4	4	2	2	2	
Palghat	4	5	5	3	3	3	
Perinthalmanna	5	5	5	2	2	2	
Ponnani	3	3	3	...	...	...	
Palghat District	24	25	25	9	9	9	

Source: District Superintendent of Police, Palghat.

IX.

Table

## SANCTIONED STRENGTH

Year	No. of Superintendents	No. of Asst. Superintendents	No. of Deputy Superintendents	No. of Inspectors
1961	1	1	2	7
1962	1	1	2	7
1963	1	1	2	7
1964	1	...	3	7
1965	1	1	2	7

Source: Inspector General of

## LAW AND ORDER

## 9.2

## OF POLICE FORCE

No. of Sub In- spectors	No. of Asst. Sub Inspectors Jamadars	No. of Head- Consta- bles	No. of Consta- bles	Total
32	...	87	607	737
30	4	85	607	737
32	4	97	696	840
33	4	98	735	881
35	4	111	791	952

Police, Trivandrum.

## IX. LAW AND ORDER

Table 9.3

## SERIOUS CRIMES IN PALGHAT DISTRICT

Sl. No.	Item of Crime	Palghat District						Kerala State	
		1963	1964	1965	1963	1964	1965	1964	1965
1	Murder	25	28	26	204	230	267		
2	Dacoity	...	2	1	3	19	12		
3	Robbery	2	2	...	39	34	29		
4	House Breaking and Theft	250	230	238	1991	2162	2259		
5	Cattle theft	33	27	23	133	157	125		
6	Ordinary theft	254	274	212	2687	2802	2714		
	Total	564	563	500	5057	5404	5606		

Source: Inspector General of Police, Kerala.

## IX. LAW AND ORDER

Table 9.4

## TREND OF COGNIZABLE OFFENCES

Year	Palghat District			Kerala State		
	No. of Crimes	Variation	Percentage of variation	No. of Crimes	Variation	Percentage of Variation
1960	1452	...	...	14070	...	...
1961	1485	+33	+2.2	14289	+219	+1.56
1962	1524	+39	+2.62	13053	-1236	-8.65
1963	1376	-148	-9.71	13120	+67	+0.51
1964	1017	-359	-26.09	13791	+671	+5.11

Source: Inspector General of Police, Kerala.

## IX. LAW AND ORDER

Table 9.5

THE VALUE OF PROPERTY STOLEN AND RECOVERED (Rs. in '000)

Year	Palghat District		
	Stolen	Recovered	Percentage
1961	105.56	31.03	29.3
1962	118.40	26.70	28.00
1963	79.99	25.56	31.95
1964	102.12	26.97	26.42
1965	227.73	51.64	22.67

Source : Inspector General of Police, Kerala.



**X. EDUCATION**

Statistics on Education and Literacy are dealt with in this section.

X.

Table

## NUMBER OF LITERATES

Taluk/District	Total Literates	
	1951	1961
Alathur	50801	72361
Chittur	53707	81993
Ottappalam	96850	131108
Palghat	74807	99735
Perinthalmanna	62756	112316
Ponnani	71531	107465
Palghat District	410452	604978

Source: Superintendent of

## EDUCATION

## 10.1

## IN 1951 &amp; 1961

Male Literates		Female Literates	
1951	1961	1951	1961
32067	44592	18734	27769
35668	52597	18039	29396
55864	71916	40986	59192
48316	61779	26491	37956
38582	65962	24174	46354
45925	62004	25606	45461
256422	358850	154030	246128

Census Operations, Kerala.

X.

Table

GROWTH OF

Taluk/District	Percentage of literates to the total population		Percentage of male literacy	
	1951	1961	1951	1961
Alathur	23.75	29.96	31.84	38.90
Chittur	22.16	30.11	30.26	39.42
Ottappalam	33.22	40.40	40.31	46.79
Palghat	27.35	33.67	36.44	42.91
Perinthalmanna	22.26	33.12	28.40	40.24
Ponnani	27.30	35.48	37.02	43.64
Palghat District	26.22	34.05	34.21	42.13

Source: Superintendent of

## EDUCATION

## 10.2

## LITERACY 1951-1961

Percentage of Female literacy			Difference 1951-1961	
1951	1961	Male literates	Female literates	Total
16.54	21.89	+ 7.06	+5.35	+ 6.21
14.49	21.17	+ 9.16	+ 6.68	+ 7.95
26.80	34.64	+ 6.48	+ 7.84	+ 7.18
18.80	24.93	+ 6.47	+6.13	+ 6.32
16.55	26.46	+11.84	+9.91	+10.86
18.56	28.27	+ 6.62	+9.71	+ 8.18
18.89	26.61	+ 7.92	+7.72	+ 7.83

Census Operations, Kerala.

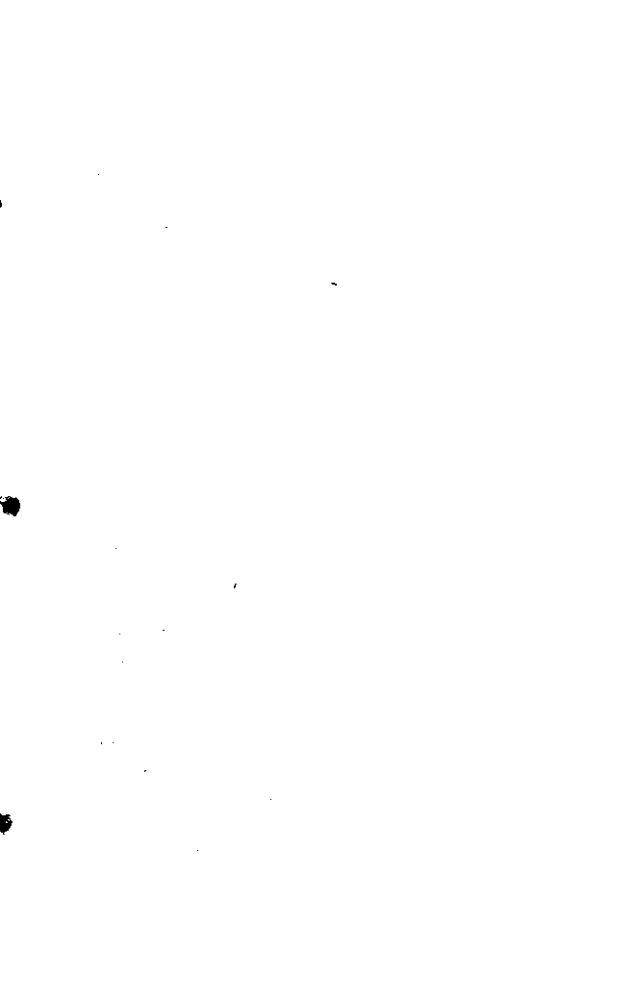
## X. EDUCATION

Table 10.3

## PROPORTION OF LITERATES—MALE AND FEMALE 1961

District/State	Total Literates	Percentage of literates to the total population	Male literates	Percentage of male lit- erates to total male population	Female population	Percentage of female literates to the total female population
Palghat	604978	34.05	358850	42.13	246128	26.61
Kerala State	7919220	46.85	4596265	54.97	3322955	38.90

Source: Superintendent of Census Operations, Kerala.



Table

## DISTRIBUTION OF HIGH, TRAINING, UPPER

Year	High Schools			Training Schools		
	Departmental	Private	Total	Departmental	Private	Total
1961-62	33	46	79	3	3	6
1962-63	35	52	87	3	3	6
1963-64	35	52	87	3	4	7
1964-65	37	57	94	3	4	7
1965-66	37	57	94	3	4	7

Source: Education

U. P. Schools included U. P. Schools Post

L. P. Schools included L. P. Schools



## EDUCATION

## 10.4

## PRIMARY AND LOWER PRIMARY SCHOOLS

U. P. Schools			L. P. Schools			Grand Total
Departmental	Private	Total	Departmental	Private Aided Un- aided	Total	
63	175	238	266	530	796	1119
76	184	260	288	512	800	1153
71	189	260	280	511	791	1145
77	197	274	274	509	783	1158
77	198	275	275	509	784	1160

## Department

basic and Senior basic schools

junior Basic school.

X.

Table

## STRENGTH IN PRIMARY CLASS BY

Year	Government		Private aided	
	Boys	Girls	Boys	Girls
1961-62	37805	29951	63268	52672
1962-63	37385	29415	67669	54328
1963-64	38208	31873	72900	60513
1964-65	41057	32752	75471	63984
1965-66	41443	33605	77189	63270

Source : Education

## EDUCATION

10.5

SEX - STANDARD I TO IV

Private Unaided		Total		Grand Total
Boys	Girls	Boys	Girls	
...	...	101073	82623	183696
228	215	105282	83958	189240
339	275	111447	92661	204109
459	416	116987	97152	214139
752	600	119384	97475	216859

Department, Kerala.

Table

## STRENGTH IN UPPER PRIMARY CLASSES

Year	Government		Private Aided	
	Boys	Girls	Boys	Girls
1961-62	12244	8171	26012	17150
1962-63	11871	7962	27905	17212
1963-64	10696	6997	19957	12961
1964-65	12865	8987	27336	18104
1965-66	13407	9037	26408	18277

Source : Education

## EDUCATION

10.6

BY SEX - STANDARD V TO VII

Private unaided		Total		Grand Total
Boys	Girls	Boys	Girls	
...	...	38256	25321	63577
...	...	39776	25174	64950
...	...	30653	19958	50611
...	...	40201	27091	67292
12	15	39827	27329	67156

Department, Kerala.

## STRENGTH IN HIGH SCHOOL CLASSES

Year	Government		Private aided	
	Boys	Girls	Boys	Girls
1961-62	7110	4829	10532	5928
1962-63	7697	4889	9313	5023
1963-64	8302	5655	13126	7430
1964-65	9019	5948	13157	7772
1965-66	9344	6016	13041	8958

Source : Education

## EDUCATION

10.7

BY SEX - STANDARD VIII to X

Private unaided		Total		Grand Total
Boys	Girls	Boys	Girls	
...	...	17642	10757	28399
...	...	17010	9912	26922
...	...	21428	13085	34513
...	...	22176	13720	35896
...	...	22385	14974	37359

Department, Kerala.

X.

Table

## DETAILS OF PUPILS AND SCHOOLS IN

District/State	Number of schools					
	Government					
	Government	Private aided	Private unaided	Total	Boys	Girls
Palghat	2	5	6	13	46	41
Kerala State	23	87	39	149	552	564

Source: Education



## EDUCATION

10.8

## PRE-PRIMARY SECTION 1965-66

Pupils						Grand Total
Private aided		Private unaided		Total		
Boys	Girls	Boys	Girls	Boys	Girls	
109	103	147	167	302	311	613
2566	2495	1010	1072	4128	4161	8289

Department Kerala.

## X. EDUCATION

Table 10.9

NUMBER OF PUPILS BENEFITED BY CARE FEEDING 1965-66

Standrad	Government		Private		Total		Grand Total
	Boys	Girls	Boys	Girls	Boys	Girls	
I	9402	7858	17957	13670	27359	21528	48887
II	8188	6568	14757	12221	22945	18789	41734
III	6599	5218	10472	9669	17071	14887	31958
IV	5508	3878	10794	8477	16302	12355	28657
Total	29697	23522	53980	44037	83677	67559	151236

Source: Education Department, Kerala.



X.

Table

## DISTRIBUTION OF

Type of schools	Government			
	Trained		Untrained	
	Men	Women	Men	Women
I. High Schools				
H. S. Section	372	182	38	21
U. P. Section	271	170	35	33
L. P. Section	5	6	...	...
Sub-Total	648	358	73	54
II. U. P. / S. B. / Schools				
U. P. / S. B. Section	269	145	11	12
L. P. / J. B. Section	366	299	3	2
Sub-Total	635	444	14	14
III. L. P. / J. B. Schools	974	692	47	8
IV. Training Schools				
Training Section	16	7	...	...
U. P. / S. B. Section	4	4	1	...
L. P. / J. B. Section	3	7	...	...
Sub-Total	23	18	1	...
Grand Total	2280	1412	135	76

Source : Education

## EDUCATION

## 10.10

## TEACHERS IN 1965-66

Private aided		Private unaided				Total
Trained	Untrained	Trained	Untrained			
Men	Women	Men	Women	Men	Women	
486	216	52	65	...	...	1432
330	224	41	34	...	...	1138
13	9	...	...	...	...	33
829	449	93	99	...	...	2603
706	386	86	96	...	7	1718
761	598	13	11	...	...	2053
1467	984	99	107	...	7	3771
1887	1090	53	34	..	10	4714
10	12	...	...	...	...	45
...	...	...	...	...	...	9
...	8	...	...	...	...	18
10	20	...	...	...	...	72
4193	2543	245	240	...	17	11160

Department, Kerala.

## NUMBER OF HINDI, MALAYALAM, TAMIL, SANSKRIT

Language and Section	Government	
	Trained	
	Men	Women
<b>HINDI</b>		
High school section	27	11
Upper primary	16	22
<b>MALAYALAM</b>		
High school section	54	8
Upper primary	2	...
<b>TAMIL</b>		
High school section	9	1
Upper primary	...	...
Lower primary	...	...
<b>SANSKRIT</b>		
High school section	8	...
Upper primary	3	1
<b>ARABIC</b>		
High school section	3	2
Upper primary	17	2
Lower primary	13	...

Source: Education

## EDUCATION

10.11

AND ARABIC TEACHERS BY SECTION 1965-66

		Private				Total
Untrained		Trained		Untrained		
Men	Women	Men	Women	Men	Women	
3	4	39	24	2	8	118
22	20	28	34	37	120	299
3	7	81	12	18	18	201
1	1	...	1	3	3	11
...	...	2	...	...	1	13
...	...	...	2	...	...	2
...	...	...	1	...	...	1
...	4	6	...	3	1	22
1	1	4	...	6	2	18
...	...	1	...	1	...	7
12	5	21	...	24	2	83
10	2	23	...	11	...	59

Department, Kerala

## PUPILS STUDING IN TEACHERS

District/ State	First Year					
	Departmental		Private		Total	
	Men	Women	Men	Women	Men	Women
Palghat	151	116	63	199	214	315
Kerala State	1453	1573	1293	2952	2746	4525

Source: Education



## EDUCATION

10.12

TRAINING COURSE 1965-66

Second year						Grand Total
Departmental		Private		Total		
Men	Women	Men	Women	Men	Women	
69	104	67	155	136	259	924
1126	1375	1350	2730	2476	4105	13852

Department, Kerala.

X

Table

## SCHOOLS WORKING IN

District/ State	No. of school covered by sessional system.	High Schools		
		Number of pupils in		
		Morning session	Evening session	Total
Palghat District	6	3507	2762	6269
Kerala State	89	59115	53376	112491

Source: Education

## EDUCATION

10.13

SESSIONAL SYSTEM 1965-66

---

Upper Primary Schools				
No. of school covered by sessional system	Number of pupils in			Grand Total
	Morning session	Evening session	Total	
9	2755	2249	5004	11273
80	29063	25783	54846	167337

---

Department, Kerala.

## X. EDUCATION

Table 10.14

## SCHOOLS WITH HOSTEL FACILITIES 1965-66

Name of Schools	Accommodation available	Number of inmates
1. P. S. High school, Chittur	68	60
2. Government Basic training school, Palghat	150	147
3. Basic training school, Koduvayoor	160	132
4. N. E. Basic training school, Alathur	160	142
5. School for the blind, Mankadapallippuram	70	38
6. Post Basic school, Thavanoor	50	30
7. Government Deaf Mute school, Ottappalam	70	73
8. G. S. S. Post Basic school, Peroor Gandhi Seva sadan P. O. (Harijan Hostel)	50	42
9. G. S. S. Basic training school, Peroor	160	130
10. I. S. N. Basic training school, Ottappalam	75	75
11. High school, Shornur	50	45
12. L. S. N. Girls high school, Ottappalam	60	45

Source: Education Department, Kerala.



Table

## COLLEGES FOR

District/ State	No. of colleges including oriental title institutions.	No. of University teach- ing departments	Number of			1964-65				
			In colleges (including Oriental title Institu- tions)	In University teaching Depart- ments						
	1964-65	1965-66	1964-65	1965-66	Boys	Girls	Total	Boys	Girls	Total
Palghat	5	5	...	...	2367	954	3321	...	...	...
Kerala	89	106	26	26	45940	26995	72935	340	180	520

Source : University

## EDUCATION

10.15

## GENERAL EDUCATION

## Students

										1965-66		
Grand Total		In colleges (including Oriental title institutions)			In University teaching departments			Grand Total		Grand Total		
Boys	Girls	Boys	Girls	Total	Boys	Girls	Total	Boys	Girls	Total		
2367	954	3297	1436	4733	...	...	...	3297	1436	4733		
46280	27175	64155	39060	103215	514	220	734	64669	39280	103949		

of Kerala.

## X. EDUCATION

Table 10.16

## COLLEGES FOR PROFESSIONAL EDUCATION

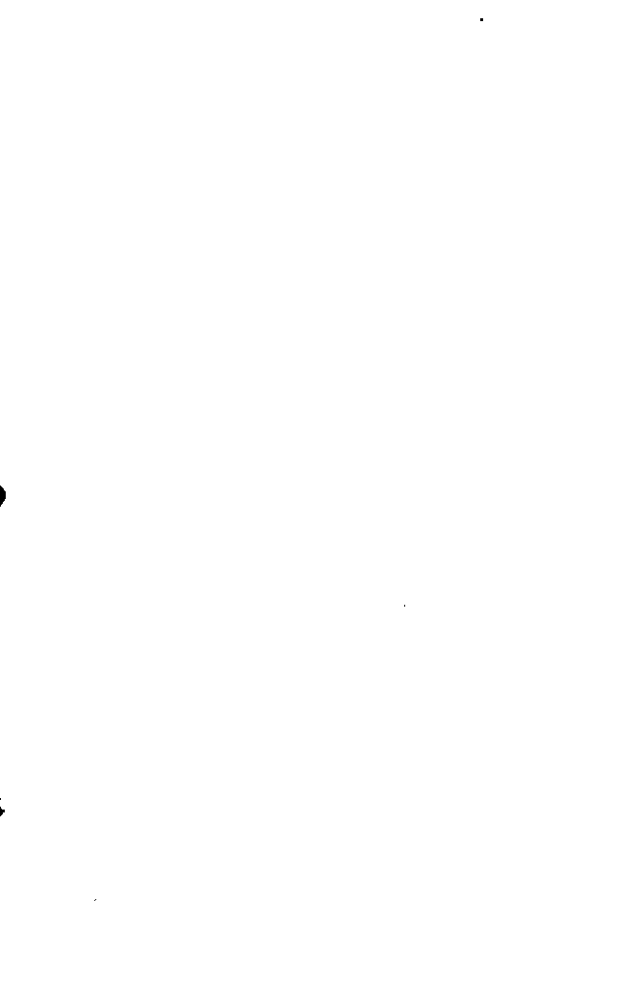
District/State	Number of Institutions		Number of Students					
	1964-65	1965-66	1964-65	1965-66	Boys	Girls	Total	
Palghat	2	2	499	47	546	647	70	717
Kerala	37	37	7978	2268	10246	9915	2905	10820

Source: 1. University of Kerala.

2. Principals, Physical Education Colleges,  
Trivandrum & Kozhikode.

3. Principal, Co-operative College, Trivandrum.





## X. EDUCATION

Table 10.16

## COLLEGES FOR PROFESSIONAL EDUCATION

District/State	Number of Institutions		Number of Students					
	1964-65	1965-66	1964-65	1965-66	Boys	Girls	Total	
Palghat	2	2	499	47	546	647	70	717
Kerala	37	37	7978	2268	10246	9915	2905	10820

Source: 1. University of Kerala.

2. Principals, Physical Education Colleges,  
Trivandrum & Kozhikode.

3. Principal, Co-operative College, Trivandrum.



## XI. MEDICAL AND

Table

## MEDICAL INSTITUTIONS

---

**Institutions**

---

**Modern Medicine :****Government hospitals****Primary Health Centres****Grant in aid institutions****Dispensaries including T. B. Clinics****Other institutions****Number of beds****Indigenous Medicine :****Government Hospitals****Government dispensaries****Number of beds**

---

**Source : Director of Health**

## PUBLIC HEALTH

## 11.1

## &amp; BEDS

Palghat District		Kerala State	
1964-65	1965-66	1964-65	1965-66
9	9	100	101
15	15	149	155
2	2	13	14
32	32	213	217
...	...	4	4
938	984	17636	18526
4	4	43	45
24	24	219	219
50	50	883	891

Services, Kerala.

# XI. MEDICAL AND PUBLIC HEALTH

## Table 11.2

INPATIENTS AND OUT-PATIENTS TREATED IN MAJOR HOSPITALS ~ 1964-65.

Category	District Hospital Palghat
Bed strength	330
Inpatients treated	27131
Average daily attendance	645
Average duration of illness	8.9
Out-patients treated	160931
Average daily new cases	441

Source: Director of Health Services, Kerala.



## XI. MEDICAL

## Table

## IN-PATIENTS TREATED IN GOVERNMENT

Name of Institutions					
	Total treated	No. cured	No. released	No. otherwise discharged	No. died
Government Ayurvedic Hospital, Palghat	356	177	...	158	1
Government Ayurvedic Hospital, Ottappalam	235	135	1	89	...
Government Ayurvedic Hospital, Thathamangalam	135	117	...	8	...
Government Ayurvedic Hospitals, Perinthalmanna	144	116	22	...	...

Source: Department of



## AND PUBLIC HEALTH

## 11.3

## AYURVEDIC HOSPITALS

1964-65				1965-66				
No. remaining	No. of beds available	Total treated	No. cured	No. released	No. otherwise discharged	No. died	No. remaining	No. of beds available
20	20	375	159	186	11	...	19	20
10	10	165	141	...	14	...	10	10
10	10	133	115	...	8	...	10	10
6	10	166	80	...	80	...	6	10

Indigenous Medicines, Kerala.

XI.

Table

## OUT-PATIENTS TREATED IN GOVERNMENT

Name of Institutions	Old cases	New cases
Government Ayurvedic Hospital Palghat	46359	19341
do Ottappalam	23938	10362
do Thatha- mangalam	25288	8650
do Perinthal- manna	23596	12230

Source: Department of

## MEDICAL AND PUBLIC HEALTH

## 11.4

## AYURVEDIC AND HOMOEOPATHIC HOSPITALS

1964-65		1965-66			
Total treated	Average daily attendance	Old cases	New cases	Total treated	Average daily attendance
65700	180	36645	18694	55339	149
34300	95	11077	8623	19700	125
33938	93	25816	11385	37201	101
45826	126	32451	13141	45592	125

Indigenous Medicines, Kerala.

## X. MEDICAL

## Table

## PATIENTS (in and out) TREATED IN AYURVEDIC

District/State	Total persons treated	
	1964-65	1965-66
Ernakulam	966086	1066713
Trichur	1010162	1082973
Palghat	452259	379571
Calicut	525222	566267
Cannanore	383727	455803
Kerala State	7151078	7293992

Source: Director of

## AND PUBLIC HEALTH

## 11.5

## DISPENSARIES IN PALGHAT AND ADJACENT DISTRICTS

Average Daily attendance		Value of medicine supplied (Rs.)	
1964-65	1965-66	1964-65	1965-66
2645	2914	116287.47	110316.95
2741	2972	194080.29	193844.43
1245	1208	85771.35	8433.53
1439	1564	130261.32	90070.80
1051	1239	66292.45	71680.05
19592	19983	960957.14	909117.53

Indigenous Medicines, Trivandrum.

# XI. MEDICAL AND PUBLIC HEALTH

Table 11.6

## PATIENTS TREATED IN GOVERNMENT HOMEO DISPENSARIES

Category	Palghat			Kerala State		
	1964-65	1965-66	1964-65	1964-65	1965-66	1965-66
Total treated	43141	41197	693096	725617		
Men	8480	7398	111797	108631		
Women	13957	13163	214473	220427		
Children	20704	20636	366829	396559		
Average daily attendance	107	103	1899	1988		
Value of medicine supplied (Rs.)	658.97	1528.62	9927.01	15154.50		

Source: Director of Indigenous Medicines, Kerala.

# XI. MEDICAL AND PUBLIC HEALTH

Table 11.7

PATIENTS TREATED IN GRANT-IN-AID AYURVEDIC DISPENSARIES AND SUBSIDISED DISPENSARIES

Category	Palghat District		Kerala State	
	1964-65	1965-66	1964-65	1965-66
Total number of patients treated	88887	78165	1100848	1095724
No. of patients cured	73245	58585	1008457	999824
No. of patients died	8	30	781	1023
No. of patients left of their own accord	3624	18570	21683	38546
No. of patients undergoing treatment at the end of the year	12110	980	69927	56331

Source: Director of Indigenous Medicine, Trivandrum.

# XI. MEDICAL AND PUBLIC HEALTH

Table 11.8

## WORKING OF GRANT-IN-AID VISHAVAIIDYASALAS

Category	Palghat District		Kerala State	
	1964-65	1965-66	1964-65	1965-66
Total treated	21002	15752	171330	168124
Treated :				
(a) Snake bites	5090	4710	38771	41714
(b) Other bites	15912	11042	132559	126410
Cured :				
(a) Snake bites	5074	4676	38071	39702
(b) Other bites	15883	10864	128240	120716



# XI. MEDICAL AND PUBLIC HEALTH

Table 11.8 (Contd.)

Category	Palghat District		Kerala State	
	1964-65	1965-66	1964-65	1965-66
Died :				
(a) Snake bites	13	20	125	142
(b) Other bites	...	7	10	18
Under treatment :				
(a) Snake bites	3	14	575	1760
(b) Other bites	29	171	4309	5766

Source : Director, Indigenous Medicines, Kerala.

## XI. MEDICAL AND

Table

## STERILISED PERSONS ACCORDING TO RELIGION IN

Religion	1964-65					
	Male		Female		Total	
	No.	%	No.	%	No.	%
Hindus	964	80.2	113	85.6	1077	80.7
Christians	82	6.8	14	10.6	96	7.2
Muslims	156	13.0	5	3.8	161	12.1
Not recorded	...	...	...	...	...	...
Total	1202	100.0	132	100.0	1334	100.0

Source : Bureau of Economics

## PUBLIC HEALTH

11.9

PALGHAT DISTRICT DURING 1964-65 &amp; 1965-66.

		1965-66			
Male		Female		Total	
No.	%	No.	%	No.	%
2205	83.6	152	82.2	2357	83.6
105	4.0	10	5.4	115	4.1
326	12.4	23	12.4	349	12.3
...	...	...	...	...	...
2636	100.0	185	100.0	2821	100.0

&amp; Statistics, Kerala.

XI. MEDICAL AND  
Table

PERSONS STERILISED ACCORDING TO AGE AND SEX IN

Age Group	1964-65			
	Males operated		Females operated	
	No.	% including not recorded	No.	% including not recorded
Below 20	...	...	1	0.7
20 — 24	3	0.2	10	6.8
25 — 29	69	5.5	35	29.6
30 — 34	228	19.4	48	35.6
35 — 39	389	32.2	30	21.2
40 and above	466	38.9	8	6.1
Not recorded	47	3.8	...	...
Total	1202	100.00	132	100.00

Source : Bureau of Economics

## PUBLIC HEALTH

11.10

PALGHAT DISTRICT DURING 1964-65 &amp; 1965-66

1965-66							
Total		Males operated		Females operated		Total	
No.	% including not recorded	No.	% including not recorded	No.	% including not recorded	No.	% Including not recorded
1	0.1	...					
13	0.9	3	0.12	9	4.94	12	0.46
104	7.9	92	3.81	39	21.43	131	5.04
276	21.0	420	17.38	60	32.96	480	18.48
419	31.1	667	27.61	57	31.32	724	27.87
474	35.6	1234	51.08	17	9.35	1251	48.15
47	3.4	220	...	3	...	223	...
1334	100.00	2636	100.00	185	100.00	2821	100.00

&amp; Statistics, Kerala.



**XII. TRANSPORT AND COMMUNICATION**

Statistics on the following topics are presented in this Section.

1. Length of Roads.
2. Length of Railways.
3. No. and kind of Motor Vehicles
4. Operation of Road Transport Corporation  
Buses
5. Fleet Utilisation of Road Transport Corporation.
6. Passengers Carried and distance travelled by Road Transport Corporation.
7. No. of Post and Telegraph Offices.
8. Taluk-wise Statement of Telephones.

## XII. TRANSPORT

Table

## LENGTH OF ROADS (in Kilometres)

Type of Road	Palghat		
	1963-64		Total
	Public Works de- partment	Others **	
Cement or Concrete	6	6	12
Bituminous or Tarred	557	40	597
Waterbound macadam	589	180	769
Lower Type	8	440	448
<b>Total</b>	<b>1160</b>	<b>666</b>	<b>1826</b>



## AND COMMUNICATION

## 12.1

1963-64, 1964-65 AND 1965-1966

District					
1964-65			1965-66		
Public Works de- partment	Others **	Total	Public Works de- partment	Others **	Total
13.49	6.48	19.97	13	6	19
581.58	36.35	617.93	650	52	702
593.85	70.95	664.80	537	180	717
12.00	53.13	65.13	25	460	485
1200.92	166.91	1367.13	1225	698	1923

## XII. TRANSPORT

Table

Type of Roads	Kerala		
	1963-64		
	Public Works de- partment	Others **	Total
Cement or Concrete	193	52	245
Bituminous or tarred	4115	452	4567
Waterbound macadam	5667	503	6170
Lower type	3659	2510	6169
Total	13634	3517	17151

Source: 1. Public works department (2) Irrigation  
(4) Municipalities

\*\* Includes roads under Forest department,

\* Roads maintained by Panchayats and Kerala

Note: Reasons for decrease: Roads transferred to

## AND COMMUNICATION

## 12.1 (Contd.)

State

1964-65			1965-66		
Public Works de- partment	Others **	Total	Public Works de- partment	Others **	Total
156.47	30.93	187.40	181	48	229
4354.32	309.17	4663.49	5286	667	595.3
4637.55	266.84	4904.39	5443	559	6002
2941.39	1240.65	4182.04	2986	2538	5519
12089.73	1847.59	13937.32	13896	3812	17708

department (3) Forest department

Irrigation department and Municipalities  
Electricity Board have not been included.  
Panchayat department.

## XII. TRANSPORT AND COMMUNICATION

Table 12.2

LENGTH OF RAILWAYS 1965-66 (in Kilometres)

Type of Gauge	Palghat District (K. M.)	Kerala State (K. M.)
Broad Gauge	122	553
Metre Gauge	27	335
Total	149	888

Source: Superintendent of Census Operations, Kerala.

## XII. TRANSPORT AND COMMUNICATION

Table 12.3

NUMBER AND TYPE OF MOTOR VEHICLES ON ROAD AS ON 31-3-1966

Sl. No.	Type of Vehicles	Palghat District	Kerala State
1.	Goods Vehicles	576	8848
2.	Stage carriages (Buses)	316	4370
3.	Taxi Cabs	403	4118
4.	Motor Cycles	362	5231
5.	Motor Cars	1358	20396
6.	Auto-Rickshaws	16	323
7.	Tractor trailers	206	740
8.	Others	...	364
	Total	3237	44390

Source : Transport Commissioner, Trivandrum.

## XII. TRANSPORT

Table

## ANALYSIS OF OPERATION OF STATE

Description	* Kozhikode	
	1963-64	1964-65
No. of Routes	14	12
Route distance (Kms.)	2600	2310
Gross Kilometres operated	4750323	5123784
Effective Kilometers operated	4649813	4836078
Dead Kilometers operated	100510	287706
% of dead Kms. to effective Kilometres	2.1	5.9

Source: Kerala State Road

\* Kozhikode Transport district Comprices  
andNo separate figures for Palghat district are  
Kozhikode for whole

## AND COMMUNICATION

## 12.4

## ROAD TRANSPORT CORPORATION BUSES

District	Kerala State			
	1965-66	1963-64	1964-65	1965-66
	13	530	553	600
	2427	16882	17832	19878
	5256358	59382343	60860556	64181873
	5067494	58361813	59676324	63324339
	188864	1020530	1184232	857534
	3.7	1.7	2.0	1.4

Transport Corporation, Kerala.  
 the Revenue Districts Palghat, Kozhikode  
 Cannanore.  
 available as there is only one Transport district viz.  
 of Malabar area.

## XII. TRANSPORT

Table

## FLEET UTILISATION OF STATE

Item	* Kozhikode
	1963-64
Number of buses held	50
Average number of buses held	44.1
Average number of buses on road per day	39.4
Percentage of fleet Utilisation	89.3
Average Vehicles Utilisation in Kms.	317.7
Average seating Capacity of buses	47.2

Source: Kerala State Road

\* Kozhikode Transport district comprises the Cannanore. No separate figures for Palghat Transport District viz. Kozhikode



## AND COMMUNICATION

12.5

## ROAD TRANSPORT CORPORATION

District	Kerala State				
	1964-65	1965-66	1963-64	1964-65	1963-1964
47	53	739	829	817	
47.7	49.2	706.6	781.0	805.2	
41.1	41.0	636.5	696.0	720.2	
87.2	83.5	90.1	88.4	89.3	
327.9	348.4	245.1	231.8	238.4	
47.1	47.1	42.00	44.00	44.0	

Transport Corporation, Kerala.  
 Revenue Districts Palghat, Kozhikode and  
 District is available as there is only one  
 for whole of Malabar area.

## XII. TRANSPORT AND

Table

NUMBER OF PASSENGERS CARRIED  
IN STATE TRANSPORT

---

Item
No. of Passengers carried (in Lakhs)
Average route distance in Kms.
Average distance travelled by a passenger in Kms.
Average covering per passenger (in Paise)
Number of accidents per lakh of gross Kms.
Number of breakdowns per 10,000 effective Kms.

---

Source : Kerala State Road

- ❖ Includes Cannanore, Kozhikode and Palghat kode Transport District for Malabar area.

## COMMUNICATION

12.6

AND DISTANCE TRAVELLED  
CORPORATION BUSES

❖ Kozhikode			Kerala State		
1963-64	1964-65	1965-66	1963-64	1964-65	1965-66
34.80	46.23	44.07	1204.98	1399.06	1585.30
185.7	192.5	186.7	31.7	32.2	33.1
34.8	30.4	36.1	12.5	12.6	12.5
104.5	94.2	110.8	37.5	36.8	37.0
2.8	2.6	2.6	2.6	2.6	2.5
0.9	0.8	1.0	1.2	1.3	1.1

Transport Corporation.

Districts as there is only one District viz. Kozhi-

## TRANSPORT AND COMMUNICATION

Table 12.7

## No. of Post and Telegraph Offices in Palghat District

Details of Offices		1960-61	1964-65	1965-66
<b>I. No. of Post Offices :</b>				
i.	Head Post Offices	2	2	2
ii.	Departmental Sub Post Offices	56	88	92
iii.	Extra departmental Branch Offices	392	359	362
<b>II. No. of Telegraph Offices</b>				
<b>III. No. of Telephone Connections</b>				
<b>IV. No. of Telephone Exchanges</b>				
<b>V. No. of Public Call Offices</b>				
i.	Trunk Call Offices	...	...	...
ii.	Local Call Offices	1	44	49
<b>VI. No. of Radio Licence issued</b>				
		29	44	49
		7618	13336	15677

Source : The Post Master General, Kerala Circle, Trivandrum.

### XIII. PRICES

**This** section gives an idea of the monthwise cost of living index numbers of Kozhikode Centre from 1964 to 1966 and also the index numbers of neighbouring centres for comparison. The monthly average retail prices of Palghat and Ottapalam for 1965 and 1966 area also given. The source for this information is the Prices Division of the Bureau of Economics & Statistics.

## XIII. PRICES

Table 13.1

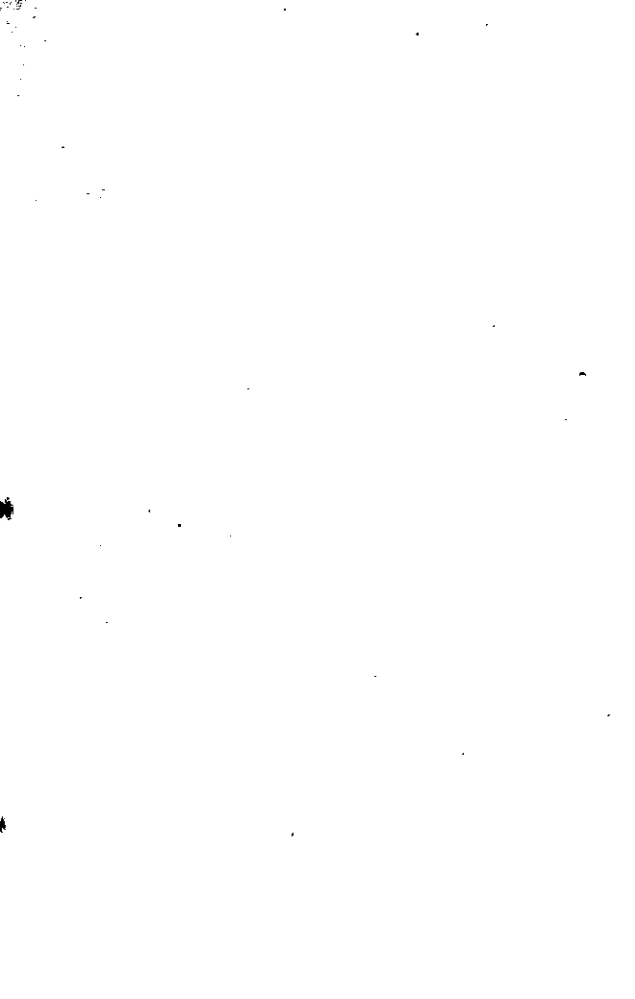
CONSUMER PRICE INDEX NUMBERS (MONTHLY) OF  
KOZHIKODE CENTRE (WHOLE FOR MALABAR AREA)  
1964, 1965 & 1966.

Period	Kozhikode Centre		
	1964	1965	1966
January	565	644	712
February	577	645	708
March	584	640	706
April	591	655	728
May	604	663	734
June	620	655	745
July	596	653	746
August	599	665	749
September	625	670	742
October	640	676	748
November	629	703	752
December	640	714	762

Source: Bureau of Economics & Statistics

(Base: Average prices from July 1935 to June  
1936 = 100) Kerala.

Note: No index number is computed for Palghat  
District separately.



## XIII.

## Table

## CONSUMER PRICE INDEX NUMBERS

Centre	Year	Janu- ary	Febru- ary	March	April
Kozhikode	1965	644	645	640	655
	1966	712	708	706	728
Trichur	1965	594	595	600	618
	1966	670	667	664	675
Chalakkudi	1965	605	602	607	724
	1966	664	661	660	671
Ernakulam	1965	606	603	600	618
	1966	674	665	656	674

Base for Kozhikode is the average prices for the  
for other centres prices

Source: Bureau of Economics &

Note: No index Number is computed



## PRICES

## 13.2

## COMPARED TO NEIGHBOURING CENTRES

May	June	July	August	Sept- ember	Octo- ber	Novem- ber	Decem- ber
663	655	653	665	670	676	703	714
734	745	746	749	742	748	752	762
629	636	625	626	635	639	662	674
692	708	712	715	710	719	725	730
628	634	622	627	633	640	663	666
680	690	688	698	694	704	711	716
630	632	627	639	639	643	665	677
691	709	710	717	711	715	723	732

year ended June 1936 = 100 and  
for August 1939 = 100.

Statistics, Trivandrum,  
for Palghat district separately

## XIII.

## Table

## MONTHLY AVERAGE RETAIL PRICES (in Rs.)

Sl. No.	Name of Commodity	Unit	Falghat				
			Jan.	Feb.	March	April	May
1	Rice*	Kg.	0.70	0.68	0.68	0.72	0.72
2	Corriander	„	2.74	2.00	2.53	2.34	2.39
3	Chillies	„	2.90	2.97	2.88	2.70	2.57
4	Onions	„	0.45	0.35	0.34	0.37	0.36
5	Salt	„	0.09	0.09	0.09	0.09	0.09
6	Tapioca (Raw)	„	0.20	0.20	0.20	0.20	N.A.
7	Greengram	„	1.57	1.54	1.63	1.65	1.72
8	Blackgram	„	1.07	0.97	0.97	1.00	1.02
9	Redgram	„	1.41	1.21	1.07	1.19	1.27
10	Dhall	„	2.09	1.92	1.88	1.80	1.81
11	Brinjal	„	0.33	0.30	0.30	3.36	0.31
12	Ladies finger	„	0.67	0.63	0.64	0.64	0.35
13	Plantain	„	0.35	0.34	0.35	0.44	0.50
14	Cucumber	„	0.25	0.22	0.23	0.22	0.19
15	Pumpkin	„	0.28	0.21	0.22	0.24	0.20

## PRICES

## 13.3 (a)

## OF CERTAIN COMMODITIES 1965

## Centre

June	July	August	Sept.	Oct.	Nov.	Dec.
0.71	0.69	0.69	0.69	0.70	0.71	0.72
2.40	2.37	2.48	2.61	2.69	3.42	3.11
2.44	2.47	2.91	3.19	3.09	4.16	4.40
0.35	0.26	0.27	0.24	0.25	0.25	0.25
0.09	0.09	0.09	0.09	0.09	0.09	0.09
0.20	0.17	0.20	0.25	NA	0.25	0.25
1.87	1.87	1.87	1.65	1.64	1.67	1.56
1.02	1.03	1.04	1.03	1.04	1.02	1.01
1.25	1.25	1.29	1.37	1.43	1.41	1.50
1.69	1.70	1.70	1.65	1.75	1.71	1.66
0.34	0.27	0.24	0.32	0.42	0.44	0.51
0.35	0.32	0.35	0.45	0.50	0.62	0.68
0.50	0.50	0.46	0.42	0.40	0.43	0.47
0.21	0.25	0.21	0.20	0.17	0.18	0.18
0.20	0.20	0.23	0.24	0.20	0.20	0.20

XIII.

Table

Sl. No.	Name of Commodity	Unit	Palghat				
			Jan.	Feb.	March	April	May
16	Chenai	Kg.	0.28	0.29	0.37	0.46	0.40
17	Mutton	"	4.00	4.00	4.50	4.50	4.25
18	Beef	"	...	...	...	NA	NA
19	Milk (Cow's)	Litre	0.98	1.00	1.00	1.00	1.00
20	Milk (Buffalo's)	"	0.98	1.00	1.00	1.00	1.00
21	Tea	Kg.	7.50	7.75	7.25	6.80	6.80
22	Coffee Powder	"	8.00	8.00	8.00	8.00	8.00
23	Jaggery	"	0.93	0.87	0.85	0.82	0.78
24	Coconut Oil	Litre	3.25	3.24	3.40	3.72	3.95
25	Gingelly oil	"	4.00	3.88	3.88	3.95	3.91
26	Arecanut (Ripe) 104 Nos		3.25	3.25	3.25	3.50	4.38
27	Tobacco (ordinary)	Kg.	5.50	5.50	5.25	5.25	5.38
28	Sugar	"	1.30	1.30	1.30	1.29	1.29
29	Kerosene	Litre	0.45	0.45	0.45	0.50	0.84
30	Betel leaves	100 Nos.	0.22	0.20	0.21	2.21	0.21

## PRICES

## 13.3 (a) (Contd.)

Centre						
June	July	August	Sept.	Oct.	Nov.	Dec.
0.48	0.46	0.41	0.34	0.36	0.34	0.33
4.38	4.53	4.50	4.50	4.50	4.50	4.50
NA	NA	NA	NA	NA	NA	NA
1.00	1.00	1.00	1.00	1.00	1.08	1.08
1.00	1.00	1.00	1.00	1.00	1.12	1.12
6.80	6.80	6.80	6.80	6.80	6.80	6.80
8.00	8.00	8.00	8.00	8.00	8.00	8.00
0.76	0.77	0.85	0.90	0.89	0.93	1.04
4.03	4.47	4.71	4.74	4.84	5.54	5.26
3.94	3.95	4.13	4.13	4.13	4.52	4.68
5.63	9.25	6.25	4.25	3.50	3.50	3.50
5.50	5.50	5.69	5.06	5.00	5.00	5.00
1.30	1.31	1.30	1.30	1.30	1.31	1.30
0.64	0.53	0.51	0.51	NA	0.52	0.52
0.22	0.22	0.30	0.30	0.30	0.30	0.30

## MONTHLY AVERAGE RETAIL PRICES (in Rs.)

Sl. No.	Name of Commodity	Unit	Ottapalam				
			Jan.	Feb.	March	April	May
1	Rice *	Kg.	0.73	0.68	NA	NA	NA
2	Corriander	„	3.39	2.52	2.37	2.40	2.55
3	Chillies	„	3.20	3.25	3.25	3.25	3.25
4	Onions	„	0.56	0.48	0.43	0.37	0.40
5	Salt	„	0.09	0.09	0.09	0.09	0.09
6	Tapioca (Raw)	„	—	—	—	NA	NA
7	Greengram	„	1.42	1.42	1.42	1.44	1.45
8	Blackgram	„	1.03	1.03	1.03	1.03	1.03
9	Redgram	„	1.18	1.18	1.12	1.12	1.18
10	Dhall	„	2.08	2.02	1.86	1.77	1.63
11	Brinjal	„	0.61	0.61	0.50	0.50	0.50
12	Ladiesfinger	„	1.00	1.03	1.00	1.00	0.65
13	Plantain	„	0.37	0.37	0.37	0.37	0.37
14	Cucumber	„	0.25	0.28	0.29	0.23	0.20
15	Pumpkin	„	0.33	0.35	0.30	0.27	0.25

## PRICES

## 13.3 (b)

## OF CERTAIN COMMODITIES 1965

## Centre

	June	July	August	Sept.	Oct.	Nov.	Dec.
NA	0.69	0.69	0.69	0.69	0.69	0.71	0.74
2.55	2.63	2.93	3.08	3.08	3.08	3.43	3.55
3.16	3.15	3.13	3.10	3.25	4.31	4.75	
0.38	0.33	0.29	0.30	0.30	0.30	0.30	0.30
0.09	0.09	0.09	0.09	0.09	0.09	0.09	0.09
0.25	0.25	0.25	0.25	0.25	0.25	0.25	0.25
1.45	1.49	1.55	1.48	1.47	1.50	1.53	
1.03	1.04	1.02	1.03	1.03	1.05	1.06	
1.18	1.17	1.38	1.41	1.41	1.50	1.61	
1.55	1.61	1.66	1.66	1.66	1.66	1.73	
0.51	0.43	0.39	0.40	0.47	0.63	0.62	
0.60	0.57	0.48	0.57	0.63	0.69	0.65	
0.37	0.37	0.37	0.39	0.40	0.40	0.40	
0.20	0.20	0.29	0.32	0.30	0.34	0.33	
0.24	0.21	0.20	0.25	0.20	0.20	0.34	

**XIII.**  
**Table**

Sl. No.	Name of Commodity	Unit	Ottapalam				
			Jan.	Feb.	March	April	May
16	Chenai	Kg.	0.33	0.33	0.39	0.44	0.45
17	Mutton	"	3.25	3.25	3.25	3.25	3.25
18	Beef	"	...	...	...	NA	NA
19	Milk (Cow's)	Litre	0.94	0.94	0.94	0.94	0.94
20	Milk (Buffalo's)	"	1.14	1.14	1.14	1.14	1.14
21	Tea	Kg.	7.25	7.25	7.25	7.25	7.28
22	Coffee Powder	"	7.85	8.00	8.00	8.00	8.00
23	Jaggery	"	1.00	0.98	0.89	0.85	0.85
24	Coconut Oil	Litre	3.52	3.50	3.55	3.88	4.13
25	Gingelly oil	"	3.75	3.75	3.75	3.75	3.88
26	Areca nut (Ripe)	104 Nos	3.00	2.84	3.19	3.30	4.19
27	Tobacco (ordinary)	Kg.	5.25	5.25	5.25	4.50	4.50
28	Sugar	"	1.32	1.31	1.30	1.26	1.29
29	Kerosene	Litre	0.48	0.48	0.48	0.48	1.06
30	Betel leaves	100 Nos.	0.24	0.17	0.14	0.08	0.10



## PRICES

## 13-3 (b) (Contd.)

## Centre

June	July	August	Sept.	Oct.	Nov.	Dec.
0.56	0.50	0.44	0.40	0.38	0.40	0.40
3.25	3.50	3.50	3.50	3.50	3.63	4.00
NA	NA	NA	NA	NA	2.00	2.00
0.94	1.00	1.10	1.10	1.10	1.10	1.10
1.14	1.20	1.30	1.30	1.30	1.30	1.30
7.25	7.15	7.00	7.00	7.00	7.00	7.00
8.00	8.05	8.03	8.25	8.25	8.25	8.25
0.85	0.79	0.88	0.92	0.90	0.90	0.98
4.20	2.48	4.68	4.70	4.80	5.70	5.69
4.00	4.00	4.12	4.30	4.34	4.63	4.95
5.88	8.37	7.75	3.63	3.05	3.00	3.00
4.50	5.12	5.00	4.91	4.75	4.75	4.75
1.31	1.32	1.31	1.29	1.29	1.30	1.30
1.06	1.00	0.68	0.80	0.52	0.52	0.52
0.09	0.08	0.09	0.10	0.09	0.11	0.12

## XIII.

## Table

## MONTHLY AVERAGE RETAIL PRICES (in Rs.)

Sl. No.	Name of Commodity	Unit	Falghat				
			Jan.	Feb.	March	April	May
1	Rice*	Kg.	0.80	0.87	0.72	0.75	1.15
2	Corriander	„	2.93	3.12	3.17	3.34	3.43
3	Chillies	„	4.38	4.03	3.85	3.93	4.22
4	Onions	„	0.25	0.26	0.32	0.50	0.66
5	Salt	„	0.09	0.09	0.09	0.09	0.09
6	Tapioca (Raw)	„	0.25	0.25	0.25	0.25	—
7	Greengram	„	1.56	1.56	1.56	1.54	1.48
8	Blackgram	„	1.00	1.05	1.05	1.05	1.10
9	Redgram	„	1.45	1.48	1.59	1.61	1.59
10	Dhall	„	1.66	1.69	1.76	1.59	1.51
11	Brinjal	„	0.51	0.55	0.48	0.35	0.38
12	Ladies finger	„	0.69	0.70	0.69	0.63	0.59
13	Plantain	„	0.56	0.53	0.45	0.49	0.50
14	Cucumber	„	0.20	0.20	0.20	0.24	0.22
15	Pumpkin	„	0.25	0.25	0.20	0.20	0.20

## PRICES

## 13. 4(a)

## OF CERTAIN COMMODITIES 1965

Centre						
June	July	August	Sept.	Oct.	Nov.	Dec.
1.27	0.76	0.76	0.76	0.76	0.93	0.93
3.57	3.59	3.59	3.62	3.59	3.57	3.35
4.94	5.55	6.00	6.63	7.69	7.13	7.38
0.94	0.86	0.74	0.64	0.83	0.95	1.14
0.09	0.09	0.09	0.09	0.09	0.09	0.09
0.23	0.25	0.20	0.20	0.20	0.21	0.20
1.48	1.56	1.57	1.57	1.55	1.57	1.57
1.15	1.20	1.36	1.44	1.54	1.62	1.63
1.61	1.61	1.60	1.57	1.59	1.61	1.61
1.52	1.54	1.59	1.61	1.66	1.67	1.64
0.37	0.35	0.29	0.25	0.38	0.48	0.66
0.58	0.58	0.43	0.38	0.47	0.53	0.85
0.52	0.51	0.46	0.49	0.49	0.46	0.43
0.23	0.26	0.37	0.37	0.38	0.36	0.33
0.21	0.24	0.30	0.28	0.28	0.28	0.30

Sl. No.	Name of Commodity	Unit	Palghat				
			Jan.	Feb.	March	April	May
16	Chenai	„	0.35	0.35	0.40	0.40	0.40
17	Mutton	„	4.50	4.50	5.00	5.00	5.00
18	Beef	„	NA	NA	—	—	—
19	Milk (Cow's)	Litre	1.08	1.08	1.08	1.08	1.14
20	Milk (Buffaloes)	„	1.12	1.12	1.12	1.12	1.18
21	Tea	Kg.	6.80	6.80	6.80	6.80	6.50
22	Coffee powder	„	8.00	8.00	8.00	8.00	8.50
23	Jaggery	„	0.93	0.84	0.81	0.93	1.01
24	Coconut oil	Litre	5.03	4.88	4.51	4.58	4.56
25	Gingelly oil	„	4.60	4.61	4.48	4.50	4.63
26	Aeccanut (Ripe) 100 Nos		3.50	3.50	3.56	5.15	4.44
27	Tobacco (ordinary)	Kg.	5.00	5.00	5.13	5.25	5.25
28	Sugar	„	1.31	1.31	1.38	1.39	1.39
29	Kerosene	Litre	0.53	0.53	0.53	0.53	0.53
30	Betel leaves	100 Nos	0.30	0.30	0.30	0.30	0.28

## PRICES

## 13.4 (a) Contd.)

Centre						
June	July	August	Sept.	Oct.	Nov.	Dec.
0.45	0.47	0.40	0.35	0.37	0.37	0.37
5.00	5.00	4.50	4.50	4.50	4.50	4.50
—	—	—	—	—	—	—
1.20	1.20	1.20	1.25	1.20	1.20	1.20
1.24	1.24	1.24	1.24	1.24	1.24	1.24
6.50	6.50	6.50	6.50	6.50	6.50	6.50
8.56	8.75	8.78	8.95	9.00	10.00	10.00
1.05	1.10	1.13	1.00	1.00	1.15	1.30
4.21	4.15	4.42	4.30	4.24	4.49	4.62
4.94	5.08	5.43	5.10	5.00	5.00	2.03
3.52	2.73	2.19	2.35	3.50	2.50	2.70
5.31	5.50	5.53	5.60	5.75	6.00	6.00
1.39	1.39	1.39	1.40	1.42	1.45	1.49
0.53	0.53	0.54	0.54	0.54	0.54	0.54
0.32	0.31	0.18	0.16	0.16	0.16	0.15

Price

XIII.

Table

## MONTHLY AVERAGE RETAIL PRICES (in Rs.)

Sl. No.	Name of Commodity	Unit	Ottapalam				
			Jan.	Feb.	March	April	May
1	Rice *	Kg.	0.72	0.78	0.76	0.81	1.25
2	Corriander	"	3.55	3.55	3.18	3.30	3.45
3	Chillies	"	4.75	4.75	4.56	4.50	4.57
4	Onions	"	0.30	0.30	0.35	0.48	0.73
5	Salt	"	0.09	0.09	0.09	0.11	0.11
6	Tapioca (Raw)	"	0.25	0.25	0.25	—	—
7	Greengram	"	1.52	1.51	1.49	1.50	1.50
8	Blackgram	"	1.06	1.06	1.10	1.12	1.17
9	Redgram	"	1.46	1.46	1.42	1.30	1.30
10	Dhall	"	1.77	1.77	1.61	1.56	1.56
11	Brinjal	"	0.58	0.73	0.89	0.83	0.55
12	Ladiesfinger	"	0.68	0.80	1.12	1.01	0.74
13	Plantain	"	0.41	0.40	0.40	0.40	0.40
14	Cucumber	"	0.31	0.29	0.40	0.37	0.25
15	Pumpkin	"	0.44	0.44	0.40	0.40	0.40

## PRICES

## 13. 4(b)

## OF CERTAIN COMMODITIES 1966

Centre						
June	July	August	Sept.	Oct.	Nov.	Dec.
1.38	0.76	0.76	0.76	0.76	0.87	0.87
3.53	3.60	3.60	3.60	3.60	3.60	3.60
5.13	5.90	6.50	6.50	8.50	7.63	7.50
0.95	0.97	0.75	0.70	0.83	1.00	1.10
0.09	0.11	0.11	0.11	0.11	0.11	0.10
0.25	0.24	0.20	0.20	0.20	0.22	0.25
1.50	1.64	1.68	1.68	1.68	1.67	1.65
1.17	1.21	1.33	1.36	1.48	1.63	1.65
1.35	1.40	1.40	1.40	1.50	1.56	1.71
1.56	1.56	1.56	1.86	1.56	1.61	1.65
0.51	0.44	0.30	0.37	0.53	0.54	0.66
0.66	0.64	0.57	0.58	0.67	0.75	0.86
0.40	0.40	0.40	0.40	0.40	0.40	0.40
0.25	0.31	0.40	0.38	0.35	0.39	0.39
0.40	0.40	0.38	0.30	0.34	0.43	0.47

XIII.

Table

Sl. No.	Name of Commodity	Unit	Palghat				
			Jan.	Feb.	March	April	May
16	Chenai	„	0.40	0.40	0.46	0.49	0.48
17	Mutton	„	4.00	4.50	4.00	4.00	4.00
18	Beef	„	2.00	2.00	2.00	2.00	2.00
19	Milk (Cow's)	Litre	1.10	1.10	1.10	1.10	1.10
20	Milk (Buffaloes)	„	1.30	1.30	1.30	1.30	1.30
21	Tea	Kg.	7.00	7.03	7.41	7.50	7.50
22	Coffee powder	„	8.50	8.75	8.75	8.90	9.50
23	Jaggery	„	1.00	0.86	0.87	0.90	1.08
24	Coconut oil	Litre	5.35	5.18	4.69	4.82	4.80
25	Gingelly oil	„	5.00	5.00	5.00	5.03	5.13
26	Areca nut (Ripe) 100 Nos		2.97	3.39	3.63	4.05	3.31
27	Tobacco (ordinary)	Kg.	4.00	4.00	4.13	4.00	4.00
28	Sugar	„	1.31	1.31	1.37	1.39	1.39
29	Kerosene	Litre	0.53	0.54	0.54	0.54	0.54
30	Betel leaves 100 Nos		0.12	0.12	0.12	0.12	0.12

\* Variety



## PRICES

13.4 (b) Contd.)

## Centre

June	July	August	Sept.	Oct.	Nov.	Dec.
0.57	0.59	0.41	0.42	0.43	0.41	0.38
4.00	4.00	4.00	4.00	4.00	4.25	4.50
2.00	2.00	2.00	2.00	2.00	2.00	2.00
1.10	1.10	1.10	1.15	1.16	1.20	1.20
1.30	1.30	1.30	1.35	1.36	1.36	1.36
7.50	7.50	7.50	7.50	7.50	7.50	7.50
9.50	9.50	9.50	9.50	10.00	10.00	10.00
1.16	1.22	1.28	1.27	1.63	1.66	1.37
4.73	4.50	4.80	4.72	4.53	4.56	4.70
5.24	5.27	5.36	5.41	5.40	5.36	5.23
2.61	2.25	2.45	3.02	3.00	3.00	3.05
4.00	4.00	4.00	4.00	4.00	4.00	6.00
1.39	1.39	1.39	1.39	1.40	1.45	1.44
0.54	0.54	0.54	0.54	0.54	0.54	0.54
0.13	0.13	0.12	0.12	0.14	0.19	0.17

Change



**XIV. JOINT STOCK COMPANIES**

The number of private and public joint stock companies according to industrial group, their authorised and paid up capital for the last three years beginning from 1963-64 are furnished in this Section.

## XIV. JOINT

Table

## JOINT STOCK COMPANIES AT

Industrial Group	Private
	No. of companies
Agriculture and allied activities	4
Mining and quarrying	...
Processing and manufacturing of food stuffs	1
Processing and manufacturing of Metal and chemicals	8
Processing and manufacturing of others	4
Construction and utilities	...
Commerce, trade and finance	13
Transport, communication and storage	2
Community and business servicee	...
Personal and other services	...
Total	32

Source: Registrar of Joint

## STOCK COMPANIES

14.1

WORK AS ON 31-3-1964

Companies		Public Companies		
Authorised capital (Rs. in lakhs)	Paid up capital (Rs. in lakhs)	No. of companies	Authorised capital (Rs. in lakhs)	Paid up capital (Rs. in lakhs)
11.50	4.13	2	25.00	13.71
...	...	...	...	...
25.00	NA	3	76.85	19.10
45.20	7.15	2	23.00	13.04
6.00	2.14	3	55.00	2.70
...	...	...	...	...
4.92	3.03	4	14.20	2.99
4.25	1.99	...	...	...
...	...	...	...	...
...	...	...	...	...
96.87	18.44	14	194.05	51.54

Stock Companies, Ernakulam.

## XIV. JOINT

## Table

## JOINT STOCK COMPANIES AT

Industrial Group	Private No. of companies
Agriculture and allied activities	4
Mining and quarrying	...
Processing and manufacturing of food stuffs	...
Processing and manufacturing of metal and chemicals	9
Processing and manufacturing of others	5
Construction and utilities	...
Commerce, trade and finance	15
Transport, communication and storage	2
Community and business service	...
Personal and other services	...
Total	35

Source: Registrar of Joint

## STOCK COMPANIES

14.2

WORK AS ON 31-3-1965

companies		Public companies		
Authorised capital (Rs. in lakhs)	Paid up capital (Rs. in lakhs)	No. of companies	Authorised capital (Rs. in lakhs)	Paid up capital (Rs. in lakhs)
11.50	4.13	2	27.50	20.25
...	...	...	...	...
...	...	3	174.35	20.60
45.40	9.79	2	23.00	13.03
56.00	2.24	3	55.00	2.70
...	...	...	...	...
9.92	3.79	3	4.20	1.63
4.25	1.99	...	...	...
...	...	...	...	...
...	...	...	...	...
127.07	21.94	13	284.05	58.21

Stock Companies, Ernakulam.

## XIV. JOINT STOCK

Table

JOINT STOCK COMPANIES AT

---

**Industrial Group**

---

Agriculture and allied activities
Mining and quarrying
Processing & manufacturing of food stuffs
Processing & manufacturing of metals and chemicals
Processing and manufacturing of others
Construction and utilities
Commerce, Trade and finance
Transport, communication and storage
Community and business services
Personal and other services
<b>Total</b>

---

Source : Registrar of Joint



## COMPANIES

## 14.3

WORK AS ON 31-3-1966

Private companies			Public companies		
No. of companies	Authorised capital (Rs. in lakhs)	Paid up capital (Rs. in lakhs)	No. of companies	Authorised capital (Rs. in lakhs)	Paid up capital (Rs. in lakhs)
4	11.50	4.13	2	27.50	20.25
..	..	..	..	..	..
..	..	..	3	174.35	20.88
8	44.90	11.56	2	23.00	13.04
6	60.00	2.61	3	55.00	2.70
..	..	..	..	..	..
14	9.72	4.65	2	1.20	0.63
2	4.25	1.99	..	..	..
..	..	..	..	..	..
..	..	..	..	..	..
34	130.37	24.94	12	281.05	57.50

Stock Companies, Ernakulam.

## XV. LOCAL BODIES AND N.E.S. BLOCKS

This portion gives information relating to the Statistics on Local Bodies and N. E. S. Blocks.

## XV. LOCAL BODIES AND N.E.S. BLOCKS

Table 15.1

## NO. OF PANCHAYATS AND POPULATION

Districts	No-of Panchayats		Population (in lakhs according to 1961 Census)
	1961	1966	
Palghat	114	114	16.66

Source: Director of Panchayats, Kerala.

## XV, LOCAL BODIES

Table

INCOME OF

---

**Item**

---

House tax

Service tax

Surcharge on building tax

Profession tax

Vehicle tax

Entertainment tax

Show tax

Income from markets

Land cess

Licence fees

Miscellaneous receipts

Total (Rs. in lakhs)

---

Source : Director of

## AND N. E. S. BLOCKS

15.2

## PANCHAYATS

Palghat		Kerala	
1963-64	1964-65	1963-64	1964-65
568489	764092	3998184	5902894
19176	47454	51241	194466
234	1164	3665	2731
132028	156957	1334291	1891043
35987	46591	308758	440199
184173	183355	1122941	1059503
20963	25974	135050	155108
44070	47337	808709	934255
15792	15495	164397	1314899
147536	165405	1099804	1190759
641042	587000	3436442	2921071
18.09	20.41	124.63	160.07

Panchayats, Kerala.

XV. LOCAL BODIES AND N. E. S. BLOCKS

Table 15.3

EXPENDITURE OF PANCHAYATS (Rs. IN THOUSANDS)

District/State	Expenditure		Closing Balance	
	1963-64	1964-65	1963-64	1964-65
Palghat District	2202.82	2505.17	1277.41	1632.80
Kerala State	17493.27	20139.03	10274.50	15160.23

Source: Director of Panchayats, Kerala.



## XV. LOCAL BODIES

Table

N. E. S. BLOCKS -

Sl. No.	Name of Blocks in Palghat District	Block Headquarters
1	Nemmara	Vaithanassery
2	Chittoor	Nattukal
3	Kollengode	Kollengode
4	Palghat	Kallekkad
5	Alathur	Puthiyanko
6	Coyalmanam	Kuzhalmannam
7	Mannarghat	Mannarghat
8	Perinthalmanna	Perinthalmanna
9	Mankada	Angadipuram
10	Ottapalam	Ottapalam
11	Sreekrishnapuram	Sreekrishnapuram
12	Pattambi	Pattambi
13	Andathode	Punnayoorkulam
14	Thrithala	Koottanad
15	Ponnani	Edappal
16	Attapady	Attapady
	(T. D. Block)	

Source : Development



## AND N. E. S. BLOCKS

15.4

## GENERAL INFORMATION

Nearest Post Office	Year of Opening
Nemmara	October 1955
Nattukal	October 1954
Kollengode	October 1952
Kallekkad	April 1952
Alathur	April 1952
Kuzhalmannam	April 1952
Mannarghat	April 1957
Perinthalmanna	April 1961
Ankadipuram	April 1960
Ottapalam	April 1962
Sreekrishnapuram	October 1961
Pattambi	October 1957
Punnayoorkulam	April 1958
Koottanad	October 1961
Edappal	October 1960
Agali	April 1962

Department.

**XV. LOCAL BODIES AND N. E. S. BLOCKS****Table 15.5****N. E. S. BLOCKS AND PANCHAYATS**

<b>Name of Taluk</b>	<b>Name of N. E. S. Blocks</b>	<b>Name of Panchayats</b>
<b>Chittoor</b>	<b>Nemmara</b>	<b>Ayilur Nemmara Nalliampathy</b>
<b>Chittoor</b>	<b>Chittoor</b>	<b>Eruthempetty Kozhinjampara Nalleppilly Pattancherry Perumathy Vadakarepathy</b>

**XV. LOCAL BODIES AND N. E. S. BLOCKS**

**Table 15.5 (Contd.)**

Name of Taluk	Name of N. E. S. Blocks	Name of Panchayats
Chittoor	Kollengode	Elavancherry
		Koduvayoor
		Kollengode
		Muthalamada
		Pallassana
		Vadavannoor
Palghat		Elapully
		Kodumba
		Polpully

**XV. LOCAL BODIES AND N. E. S. BLOCKS**  
**Table 15.5 (Contd.)**

<b>Name of Taluk</b>	<b>Name of N. E. S. Blocks</b>	<b>Name of Panchayats</b>
<b>Palghat</b>	<b>Palghat</b>	<b>Akethethara</b>
		<b>Keralasserry</b>
		<b>Kongadu</b>
		<b>Kannadi</b>
		<b>Mannur</b>
		<b>Mankara</b>
		<b>Mundoor</b>
		<b>Malampuzha</b>
		<b>Marutharode</b>
		<b>Parali</b>
		<b>Pirayiri</b>
		<b>Pathupariyaram</b>

**XV. LOCAL BODIES AND N. E. S. BLOCKS****Table 15.5 (Contd.)**

<b>Name of Taluk</b>	<b>Name of N. E. S. Blocks</b>	<b>Name of Panchayats</b>
<b>Alathur</b>	<b>Alathur</b>	<b>Alathur</b> <b>Erumayoor</b> <b>Kavassery</b> <b>Kannambra</b> <b>Kizhakencherry</b> <b>Melarkode</b> <b>Puthukode</b> <b>Tharur</b> <b>Vadakkamcherry</b> <b>Vandazhy</b>

## XV. LOCAL BODIES AND N. E. S. BLOCKS

Table 15.5 (Contd.)

Name of Taluk	Name of N. E. S. Blocks	Name of Panchayats
Alathur	Coyalmannam	Coyalmannam Kottayi Kuthannur Mathur Peringottukurissy Thenkkurussy Peruvamba Puthussery

**XV. LOCAL BODIES AND N. E. S. BLOCKS****Table 15.5 (Contd.)**

<b>Name of Taluk</b>	<b>Name of N. E. S. Blocks</b>	<b>Name of Panchayats</b>
<b>Perinthalmanna</b>	<b>Mannarghat</b>	<b>Alanellur</b> <b>Attapadi</b> <b>Kollapadom</b> <b>Karakurussi</b> <b>Kumaramputhur</b> <b>Karimba</b> <b>Mannarghat</b> <b>Pottassery</b> <b>Thachanattukara</b>

**LOCAL BODIES AND N. E. S. BLOCKS****Table 15.5 (Contd.)**

<b>Name of Taluk</b>	<b>Name of N. E. S. Blocks</b>	<b>Name of Panchayats</b>
<b>Perinthalmanna</b>	<b>Perinthalmanna</b>	<b>Aliparamba Edappatta Elamkulam Keezhathur Melathur Perinthalmanna Thazhakode Vettathur</b>



## XV. LOCAL BODIES AND N. E. S. BLOCKS

Table 15.5 (Contd.)

Name of Taluk	Name of N. E. S. Blocks	Name of Panchayats
Perinthalmanna	Mankada	Angadipuram Kodur Kuruva Kuttilangadi Mankada Moorkanad Pulamanthole Puzhakathiri

**XV. LOCAL BODIES AND N. E. S. BLOCKS****Table 15.5 (Contd.)**

<b>Name of Taluk</b>	<b>Name of N. E. S. Blocks</b>	<b>Name of Panchayats</b>
<b>Ottapalam</b>	<b>Ottapalam</b>	<b>Ambalapara Ananganadi Chalavara Lakkidi, Perur Ottapalam Vaniamkulam</b>
<b>Ottapalam</b>	<b>Sreekrishnapuram</b>	<b>Cherplassery Kadampazhipuram Karimpuzha Sreekrishnapuram Thrikkideri Vellinezhy</b>

**XV.- LOCAL BODIES AND N. E. S. BLOCKS****Table 15.5 (Contd.)**

<b>Name of Taluk</b>	<b>Name of N. E. S. Blocks</b>	<b>Name of Panchayats</b>
<b>Ottapalam</b>	<b>Pattambi</b>	<b>Kulukallur</b> <b>Koppam</b> <b>Muthuthala</b> <b>Nellaya</b> <b>Ongallur</b> <b>Pattambi</b> <b>Shorur</b> <b>Thiruvengapuram</b> <b>Vilayur</b> <b>Vallapuzha</b>

**XV. LOCAL BODIES AND N. E. S. BLOCKS****Table 15.5 (Contd.)**

<b>Name of Taluk</b>	<b>Name of N. E. S. Blocks</b>	<b>Name of Panchayats</b>
<b>Ponnani</b>	<b>Andathode</b>	<b>Alencode</b>
		<b>Marancherry</b>
		<b>Nannamukku</b>
		<b>Perumpadappu</b>
		<b>Punnayoorkulam</b>
		<b>Punnayoor</b>
		<b>Vadakkekad</b>
<b>Ponnani</b>	<b>Thrithala</b>	<b>Anakara</b>
		<b>Chalissery</b>
		<b>Kappur</b>
		<b>Nagalassery</b>
		<b>Pattithara</b>
		<b>Thrithala</b>
		<b>Thirumittakode</b>

# XV. LOCAL BODIES AND N. E. S. BLOCKS

Table 15.5 (Contd.)

Name of Taluk	Name of N. E. S. Blocks	Name of Panchayats
Ponnani	Ponnani	Edappal Ezhuvanthuruthy Ponnani Thavannur Vattamkulam

Source : Director of Panchayats, Kerala.

## XV. LOCAL BODIES

Table

INCOME OF

---

	1964-65			
Name of Municipality	Municipal retes and taxes	Other receipts	Total income	Opening balance
Palghat	742.51	635.10	1377.61	333.18
Chittur Thatbaman- galam	135.21	145.90	281.11	18.32

---

Source:

## AND N. E. S. BLOCKS

15.6

## MUNICIPALITIES (Rs. in thousands)

1965-66

Grand total	Municipal rates and taxes	Other receipts	Total income	Opening balance	Grand total
1710.79	1044.88	824.39	1869.27	418.07	2287.34
299.43	194.89	58.77	253.66	43.58	297.24

Municipalities.

## XV. LOCAL BODIES

Table

## EXPENDITURE OF

Name of Municipality	1864-65			
	Current expenditure	Capital expenditure and others	Total expenditure	Closing balance
Palghat	875.85	416.87	1292.72	418.07
Chittur-Thathamangalam	159.61	96.24	255.85	43.58

Source:



## AND N. E. S. BLOCKS

15-7

## MUNICIPALITIES (Rs. in thousands)

1965-66					
Grand Total	Current expenditure.	Capital expenditure and others	Total expenditure	Closing balance	Grand total
1710.79	1153.05	483.68	1636.73	650.61	2287.34
299.43	205.54	66.46	272.00	25.24	297.24

Municipalities



**XVI. CO-OPERATION**

**This section presents number of co-operative Societies membership and working capitals, Loan issued by the Agricultural credit Societies, details of Harijan Societies and milk supply societies etc. Data for the latest period available has been incorporated.**

## XVI. LOCAL BODIES

Table

## NO. OF CO-OPERATIVE SOCIETIES, MEMBERSHIP AND WORKING

Type of Society	As on 30-6-1965				
	No. of Societies	Membership	Paid-up share capital	Reserve & other funds	Deposits & borrowings
1	2	3	4	5	6
1. Central Co-operative Bank	2	317	26.25	4.69	147.52
2. Primary Land mortgage Bank	2	2892	1.34	...	19.51
3. Agricultural credit societies (Large and Small)	165	129794	33.00	24.18	185.02
4. Non - Agricultural credit societies	9	9864	5.18	1.72	41.90
5. Primary marketing societies	7	7594	3.91	9.33	28.32
6. Milk supply unions	1	378	0.29	0.17	0.37
7. Milk supply societies	19	2077	0.37	0.13	0.48
8. Primary societies					
(a) Joint farming	5	229	0.12	...	0.31
(b) Collective farming	NA	NA	NA	NA	NA

## AND CO-OPERATION

## 16.1

## CAPITAL (PALGHAT DISTRICT) (Amount in Rs. lakhs)

As on 30-6-1966						
Working capital	No. of Societies	Membership	Paid-up share capital	Reserve & other funds	Deposits & borrowings	Working capital
7	8	9	10	11	12	13
178.46	2	314	32.80	6.09	135.49	174.38
20.85	2	3354	1.90	...	28.31	30.21
242.20	160	150250	38.92	31.21	206.59	276.72
48.80	9	20048	5.86	3.81	47.25	56.92
41.56	9	10257	7.45	9.86	23.41	40.72
0.83	1	254	0.34	0.25	0.92	1.51
0.98	24	3045	0.73	0.15	0.78	1.66
0.43	5	217	0.08	...	0.28	0.36
NA	NA	NA	NA	NA	NA	NA

## XVI. LOCAL BODIES

Table

1	2	3	4	5	6
9. Irrigation societies	3	96	0.01	...	...
10. Sugar factories	NA	NA	NA	NA	NA
11. Wholesale stores	1	2101	16.80	1.11	17.03
12. Primary consumers' co-operative stores	21	6873	0.92	1.24	0.44
13. Housing societies (Rural & Urban)	6	337	3.42	0.04	7.45
14. Fishermen Co-operative societies	N. A.				
15. Other non-Credit societies					
(a) Agricultural	3	240	0.03	0.01	...
(b) Non-Agricultural	82	17816	0.69	0.24	0.56
16. Supervising unions	N. A.				
17. Harijan societies	23	2463	0.15	0.01	1.89

Source: Registrar of Co-operative

N. A. District-wise figures are

## AND CO-OPERATION

## 16.1 (Contd.)

7	8	9	10	11	12	13
0.01	2	56	0.01	...	...	0.01
NA	1	1879	40.87	14.75	138.32	193.94
34.94	1	2398	2.48	0.70	9.16	12.34
2.60	21	6781	1.02	2.35	0.77	4.14
10.91	6	390	3.42	0.04	8.19	11.65
0.04	2	116	0.01	0.01	...	0.02
1.49	82	19945	0.73	0.27	0.38	1.38
2.05	23	2497	0.15	0.01	2.00	2.16

Societies, Kerala.

not available.

## XVI. LOCAL BODIES

Table

AGRICULTURAL CREDIT SOCIETIES - LOANS ISSUED INCategoryShort term:

1. Seasonal Agricultural operations (seeds, fertilisers included)
2. Purchase of Agricultural implements
3. Marketing crops
4. Industrial purposes (of credit benefit to agriculture)
5. Consumption of loan
6. Other purposes

Total

Medium Term:

1. Sinking of or repair of wells
2. Purchase of (pumpsets etc.) machinery
3. Purchase of cattle
4. Minor improvements to land
5. Other agricultural purposes
6. Others

Total

Source: Registrar of



## AND CO-OPERATION

## 16.2

## PALGHAT DISTRICT 1964-65 &amp; 1965-66 (Rs. in '000)

Palghat District		Kerala State	
1964-65	1965-66	1964-65	1965-66
9039.05	9448.30	59028.85	66641.74
1507.31	2037.22	3934.68	4830.18
...	...	1652.52	895.49
...	...	1065.06	453.22
513.42	720.00	4399.39	5885.22
1131.40	1054.79	7839.46	11201.69
12191.18	13260.31	77919.96	89907.54
421.37	539.78	1791.11	1502.53
...	...	1784.01	1723.58
653.90	766.92	2156.85	1860.43
3112.65	3359.05	11290.45	13132.84
660.05	811.46	9209.71	9539.27
...	...	5529.62	6898.21
4847.97	5477.21	31761.75	34656.86

Co-operative Societies, Kerala.

## XVI. LOCAL BODIES

## Table

## HARIJAN SOCIETIES

---

Sl. No.	Category
1	Number of Societies
2	Number of members
3	Paid up share capital
4	Statutory reserve
5	Other reserves
6	Deposits
7	Other borrowings
8	Investments
9	Land and buildings
10	Loans advanced
11	Loans recovered
12	Loans outstanding
13	Over due
14	Value of fertilisers distributed
15	Value of consumer goods sold

---

Source: Registrar of

## AND CO-OPERATION

## 16.3

1964-65 AND 1965-66 (Amount in '000)

Palghat District		Kerala State	
1964-65	1965-66	1964-65	1965-66
23	23	345	336
2463	2497	31273	37773
15.26	15.38	282.12	306.30
0.09	0.43	16.69	35.30
0.54	0.50	60.34	64.03
2.26	2.22	28.63	33.40
186.60	197.21	1047.02	928.51
3.64	8.51	128.98	144.92
...	...	24.88	21.17
3.80	3.91	312.34	259.20
5.21	3.06	163.13	279.85
20.64	21.50	595.99	567.89
9.63	12.63	238.40	217.50
66.51	...	248.42	102.37
...	...	2353.79	3214.06

Co-operative Societies, Kerala.

## XVI. LOCAL BODIES

Table

## HARIJAN SOCIETIES LOANS

---

Sl. No.	Items
---------	-------

---

## Short Term

- 1 Seasonal agricultural operations (seeds, fertilisers included)
- 2 Purchase of agricultural implements
- 3 Consumption loan
- 4 Other purposes

Total

## Medium Term

- 1 Sinking of or repairs to well
- 2 Purchase of machinery (pumpsets etc.)
- 3 Purchase of cattle
- 4 Minor improvements to land
- 5 Other agricultural purposes

Others

Total

---

Source: Registrar of

## AND CO-OPERATION

## 16.4

ISSUED 1964-1965 AND 1965-66

Palghat District		Kerala State	
1964-65	1965-66	1964-65	1965-66
2325	3915	115398	63553
...	...	5900	...
...	...	8298	11707
1470	...	41483	61880
3795	3915	171079	137140
...	...	13010	2110
...	...	...	7215
...	...	12116	12129
...	...	46915	35160
...	...	7980	40524
...	...	61243	24916
...	...	141264	122054

Co-operative Societies, Kerala.

## XVI. LOCAL BODIES

Table

## MILK SUPPLY SOCIETIES

Sl. No.	Items
1	Total number of Societies
2	Number of members
3	Paid up share capital
4	Reserve and other fund
5	Total borrowings
6	Other liabilities
7	Fixed assets
8	Loans outstanding
9	Of which over dues
10	All other assets
11	Value of milk purchased
12	Value of sales
13	Loans advanced
14	Loans recovered
15	Cost of management
16	Number of societies working at profit
17	Profit for the year
18	Number of societies working at loss
19	Loans for the year

Source : Registrar of Co-operative

## &amp; CO-OPERATION

## 16.5 (Contd.)

## 1964-65 &amp; 1965-66

Palghat District		Kerala State		
1964-65	1965-66	1964-65	1965-66	
	19	24	234	262
	2077	3045	26288	29572
Rs.	37465/-	72541	400032	475454
	12985/-	14937	133601	176833
	48020/-	78141	424208	398738
	79850/-	94053	1324295	1579940
	29204/-	44896	389484	396609
	39079/-	114024	352881	456209
	189/-	189	55787	71723
	88448/-	133104	1565383	1877170
	657274/-	1446592	8242910	11015074
	744874/-	1154792	8756436	11235706
	51280/-	241710	448917	625919
	24550/-	166771	358126	506696
	87135/-	99143	728809	670651
	13/-	17	114	125
	14941/-	34690	153246	178655
	6/-	7	100	106
	1768/-	2338	60844	73938

Societies, Kerala.





**XVII. SALES TAX**

Details regarding the number of registered dealers under General Sales Tax, particulars of non-assesseés, notices issued under Agricultural Income Tax, Receipt under Central Sales Tax, arrears under Sales Tax, Agricultural Income Tax etc. are presented in this Section.

## XVII.

## Table

## NUMBER OF DEALERS REGISTERED UNDER THE

Year	Number of Registered dealers at the beginning of the year		
	Total number	Number renewed	Number not renewed
1960-61	4139	3629	510
1961-62	4104	3950	154
1962-63	4274	3863	411
1963-64	4395	3512	883
1964-65	4147	4147	...
1965-66	4149	4174	20

Source: Agricultural Income Tax and

## SALES TAX

## 17.1

## GENERAL SALES TAX ACT IN PALGHAT DISTRICT

Number of dealers registered during the year	Number cancelled or transferred	Number at the end of the year	Registration fee realised (Rs.)
727	762	4104	25913.60
589	419	4274	24529.12
955	834	4395	27062.68
105	353	4147	46928.23
388	341	4194	49627.00
870	79	4985	52941.00

Sales Tax Department, Kerala.

XVII.

Table

## STATEMENT OF PARTICULARS

Palghat District			
Year	No. of registered dealers who were not assesses	No. of non-assesseees who collected tax	Amount of tax collected (Rs.)
1960-61	1798	30	2132.51
1961-62	1770	50	4820.23
1962-63	1950	94	2973.21
1963-64	1580	45	2209.25
1964-65	1197	35	2208.67
1965-66	2017	33	1648.46

Source: Agricultural Income tax and

## SALES TAX

17.2

## OF NON-ASSEESSES

Kerala State		
No. of Registered dealers who were not assesseees	No. of non- assesseees who collected tax	Amount of tax Collected (Rs.)
20193	3230	254235.64
21681	2701	217093.35
22033	1919	223401.66
24146	1854	193954.96
22253	2066	234066.81
20164	1679	122182.21

Sales Tax Department, Kerala.

XVII.

Table

## NUMBER OF NOTICES ISSUED UNDER

Year	Palghat District			
	No. of Notices issued	No. of notices served	No of returns received	No. of assess-ments made
1960-61	5124	4966	4723	5078
1961-62	4441	4258	4187	4353
1962-63	3841	3796	3725	3175
1963-64	4641	4589	4122	3413
1964-65	3423	3494	3232	3943
1965-66	...	...	...	...

Source: Agricultural Income Tax and

## SALES TAX

## 17.3

## AGRICULTURAL INCOME TAX

Kerala State			
No. of notices issued	No. of notices served	No. of returns received	No. of assessments made
21541	20102	18797	22019
22990	22447	21861	22716
21350	21105	19891	20274
21616	21139	19895	20992
19516	19282	18049	22069
...	...	...	...

Sales Tax Department, Kerala.

XVII.

Table

## MISCELLANEOUS RECEIPTS UNDER

Palghat District			
Year	Penalty realised (Rs.)	Other receipts if any (Rs.)	Total (Rs.)
1960-61	...	1232.00	1232.00
1961-62	151.00	1903.52	2054.52
1962-63	...	3239.00	3239.00
1963-64	...	3330.45	3330.45
1964-65	...	3155.95	3155.95
1965-66	...	2628.58	2628.58

Source : Agricultural Income Tax and



## SALES TAX

17.4

## CENTRAL SALES TAX

Kerala State		
Penalty realised (Rs.)	Other receipts if any (Rs.)	Total (Rs.)
1070.41	19859.74	20930.15
10141.70	42062.90	52204.60
9649.10	49280.93	58930.03
4302.26	43565.66	47867.92
7372.25	56297.95	63670.20
23479.71	59246.37	82726.08

Sales Tax Department, Kerala.

## XVII. SALES TAX

Table 17.5

YEARWISE BREAK-UP OF ARREARS UNDER SALES TAX  
PENDING COLLECTION (General Sales Tax, Sur-  
charges and Central Sales Tax) AS ON 31ST MARCH  
1966

Year	Palghat District (Rs.)	Kerala State (Rs.)
Upto 1950-51	2676.98	810659.64
1950-51	2284.97	373298.21
1951-52	5323.11	661836.69
1952-53	3640.49	648368.00
1953-54	2417.73	654562.86
1954-55	2163.88	1036494.81
1955-56	9324.43	842546.36
1956-57	7086.51	1272171.61
1957-58	8079.90	1295579.20
1958-59	11305.28	1701219.94
1959-60	35872.43	2091761.59
1960-61	36415.37	3287980.31
1961-62	24184.40	4849913.53
1962-63	69718.55	3690826.47
1963-64	86040.81	6407678.82
1964-65	695598.02	11315371.59
1965-66	794185.60	45319049.34
Total	1796318.46	

Source: Agricultural Income tax and Sales tax  
Department, Kerala

## XVII. SALES TAX

Table 17.6

YEARWISE BREAK-UP OF ARREARS UNDER AGRICULTURAL INCOME TAX PENDING COLLECTION AS ON 31st MARCH 1966

Year	Palghat District (Rs.)	Kerala State (Rs.)
Upto 1950-51	...	13562.50
1950-51	...	3523.56
1951-52	...	4251.14
1952-53	...	20139.87
1953-54	...	44143.17
1954-55	...	50795.75
1955-56	...	43935.80
1956-57	...	37602.37
1957-58	...	27580.88
1958-59	...	54259.68
1959-60	5995.52	135792.17
1960-61	5748.59	218416.58
1961-62	1980.12	355593.98
1962-63	5025.02	575624.81
1963-64	19800.01	1241584.94
1964-65	58307.75	1215219.81
1965-66	225486.38	4977320.81
Total	322343.39	9019347.82

Source: Agricultural Income Tax and Sales Tax Department, Kerala.

# XVIII. MISCELLANEOUS

## Table 18.1 (a)

LOAN APPLICATIONS RECEIVED, SANCTIONED AND AMOUNT DISBURSED BY THE  
KERALA FINANCIAL CORPORATION AS ON 31-3-1966

District/State	Applications received		Amount sanctioned		Amount disbursed	
	No.	Amount (Rs.in lakhs)	No.	Amount (Rs.in lakhs)	No.	Amount (Rs.in lakhs)
Palghat District	5	35.25	1	7.45	1	5.90
Kerala State	216	668.87	162	435.72	156	330.18

Source: Kerala Financial Corporation.

# XVIII MISCELLANEOUS

Table 18.1 (b)

LOAN APPLICATIONS RECEIVED, SANCTIONED AND AMOUNT ADVANCED FROM AGENCY FUNDS BY THE KERALA FINANCIAL CORPORATION AS ON 31-3-1966

District State	Applications received		Applications sanctioned		Amount disbursed	
	No.	Amount (Rs. in lakhs)	No.	Amount sancti- oned (Rs. in lakhs)	No.	Amount disbur- sed (Rs. in lakhs)
Palghat District	14	7.48	11	5.42	10	4.33
Kerala State	296	156.72	164	89.84	152	64.45

Source: Kerala Financial Corporation.

## XVIII.

## Table

## SMALL SAVINGS COLLECTION IN PALGHAT DISTRICT

	Postal certificates		Post office savings Bank	
	Gross	Net	Gross	Net
January 1966	153	6	1037	-163
February "	127	-3	1257	154
March "	485	232	2142	733
April "	104	-26	1314	183
May "	85	-136	1416	8
June "	130	-88	1634	127
July "	83	-31	1370	53
August "	44	-112	1221	-305
September "	122	-90	1479	141
October "	62	-90	1465	189
November "	171	36	1789	376
December "	60	-19	1754	309
Total	1626	-321	17878	1439

Source: Directorate of

## MISCELLANEOUS

18.2

DURING 1966 (Month-wise) RS. IN THOUSANDS

Defence deposit certificate		15 years annuity certificate		Cumulative time deposit scheme	
Gross	Net	Gross	Net	Gross	Net
...	...	...	...	104	-6
...	...	...	...	133	-15
3	3	...	...	138	-37
1	-15	...	...	121	42
...	-10	...	...	122	63
...	...	...	...	123	64
1	1	...	...	109	42
...	-5	...	...	133	69
...	...	...	...	119	40
...	-3	...	...	112	58
...	...	...	...	119	33
...	...	...	...	114	68
5	-29	...	...	1447	421

National Savings

## XVIII.

## Table

## NUMBER OF LIBRARIES AND READING

Sl. No.	Grade	
1.	A1	grade - grant of Rs. 1000/-
2.	A	„ „ 600/-
3.	B1	„ „ 550/-
4.	B	„ „ 500/-
5.	C1	„ „ 450/-
6.	C	„ „ 400/-
7.	D1	„ „ 375/-
8.	D	„ „ 350/-
9.	E1	„ „ 300/-
10.	E	„ „ 250/-
11.	F1	„ „ 225/-
12.	F	„ „ 200/-
13.	G1	„ „ 170/-
14.	G	„ „ 140/-
15.	H1	„ „ 120/-
16.	H	„ „ 100/-
17.	Libraries without grant	
18.	Affiliated during the year	
Total		

❖ 38 Harijan Libraries

Source : Kerala Grandha Sala



## MISCELLANEOUS

## 18.4

## ROOMS RECEIVING GRANT.

Palghat District		Kerala State	
1964-65	1965-66	1964-65	1965-66
...	...	9	11
...	...	11	11
1	1	14	14
...	...	22	22
3	3	35	35
...	...	53	54
3	3	68	68
2	2	79	83
2	2	149	156
5	5	248	261
12	14	381	384
21	25	354	381
26	27	284	321
20	30	196	261
21	26	144	207
1	7	39	70
85	62	593	408
5	4	78	86
207	211	2757	2843

Sanghom, Trivandrum.

## XVIII.

## Table

## THIRD FIVE YEAR PLAN (1961-62 to 1965-66)

Major heads	Expenditure	
	1st year	2nd year
Agriculture	25.604	26.424
Community development	30.777	17.459
Irrigation and Power	63.029	69.494
Industries and mining	6.133	4.736
Transport & Communi- cation	30.811	20.661
Social Services	28.561	25.522
Miscellaneous	2.480	0.543
<b>Total</b>	<b>187.395</b>	<b>164.839</b>

Source: District Statistical

## MISCELLANEOUS

18.5

FINANCIAL ACHIEVEMENT IN PALGHAT DISTRICT  
(Rs. in lakhs)

during			
3rd year	4th year	5th year	Total
53.874	55.809	61.238	222.949
29.333	25.550	26.965	130.084
78.834	98.579	100.408	410.344
10.831	9.998	4.446	36.144
27.206	18.469	10.553	107.700
45.447	52.321	36.960	188.811
2.253	0.734	0.925	6.935
247.778	261.460	241.495	1102.967

Officer, Palghat.

## XVIII. MISCELLANEOUS

### Table 18.6

**DEMAND, COLLECTION AND BALANCE OF VARIOUS LAND TAXES IN PALGHAT DISTRICT**

Kind of Tax	1964-65			1965-66		
	Demand (Rs.)	Collection (Rs.)	Balance (Rs.)	Demand (Rs.)	Collection (Rs.)	Balance (Rs.)
Basic Tax	5506704	3796886	1709817	3376981	2173105	1203807
Land revenue other than basic tax	95175	71369	23805	94746	84490	10256
Irrigation revenue	1550415	574565	975850	1092501	1084988	7513
Capital revenue	...	...	...	...	...	...
Kandukrishi revenue	...	...	...	...	...	...
Plantation additional tax	104053	89276	14777	195733	195309	421

Source: Board of Revenue, Trivandrum.

XVIII. MISCELLANEOUS

Table 18.7

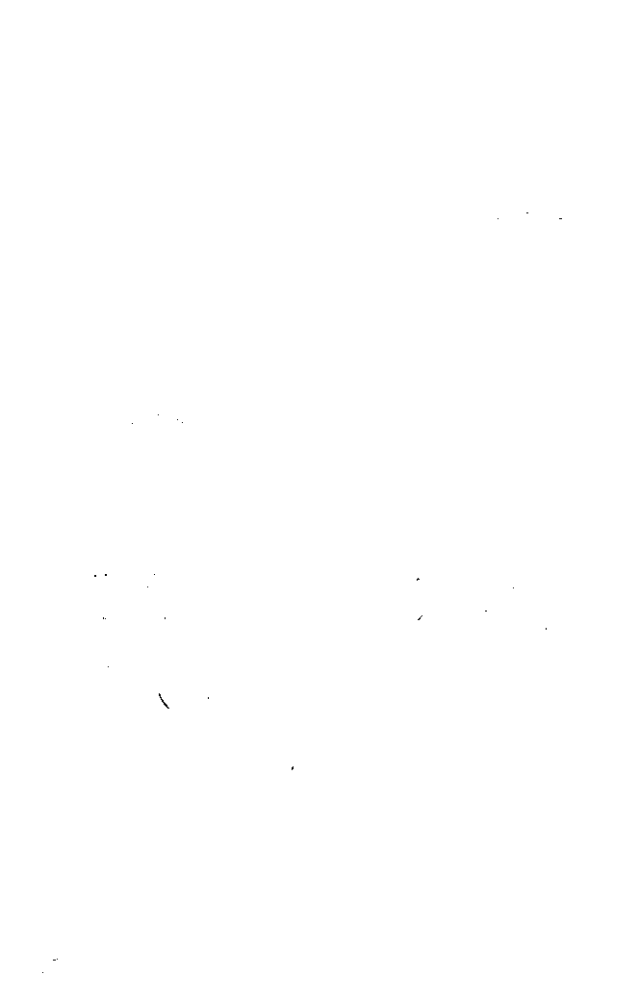
DETAILS OF THANDAPERS IN PALGHAT DISTRICT

Details of thandapers	No. of thandapers as on 31-3-1965	No. of thandapers as on 31-3-1966
No. of thandapers with extend upto 5 cents	7882	8477
„ 5 cents to 10 cents	11722	12310
„ 10 „ 50 „	35429	34992
„ 50 „ 1 acre	22601	29053
„ 1 acre to 2 „	28251	26451
„ 2 „ 3 „	14144	14986
„ 3 „ 4 „	10017	9211
„ 4 „ 5 „	8010	8146

**XVIII. MISCELLANEOUS**  
**Table 18.7 (Contd.)**

Details of thandapers	No. of thandapers as on 31-3-1965	No. of thandapers as on 31-3-1966
<b>No. of thandapers with extend upto</b>		
„ 5 acre to 6 acre	3376	3156
„ 6 „ 7 „	2708	2575
„ 7 „ 8 „	2295	2114
„ 8 „ 9 „	1936	1775
„ 9 „ 10 „	1757	1532
„ 10 „ 11 „	1194	1128
„ 11 „ 12 „	1005	1010
„ 12 „ 13 „	956	869
„ 13 „ 14 „	830	755
„ 14 „ 15 „	1422	726
Above 15 acres	9055	8635
<b>Total</b>	<b>164590</b>	<b>167901</b>

Source : Board of Revenue.



## XVIII.

## Table

## RECEIPT AND DISPOSAL OF APPLICATIONS UNDER

Kind of scheme	1964-65	
	No. of applications for disposal	Number sanctioned
Old age pension scheme	1016	69
Grant-in-aid to physically disabled	461	30
Pension to destitute widows	5277	119
Financial assistance to T. B. patients	421	129

Source: Board of Revenue,



## MISCELLANEOUS

18-8

## VARIOUS SCHEMES OF SOCIAL BENEFIT IN PALGHAT DISTRICT

1965-66					
Number rejected	Balance for disposal	No. of applications for disposal	Number sanctioned	Number rejected	Balance for disposal
600	347	544	181	284	79
63	368	489	92	162	235
1519	3639	4458	314	2019	2125
59	233	262	71	65	126

Trivandrum.

## CONVERSION TABLE

1 Mile	—	1.609344 KM.
1 Sq. mile	—	2.58999 Sq. KM.
1 Acre	—	0.404686 Hectares
1 Ton	—	1.01605 M. Tonnes
1 Pound	—	0.4535924 Kg.
1 Gallon	—	4.54596 Litres

696

PRINTED AT  
S B PRESS  
TRIVANDRUM