



GOVERNMENT OF KERALA

**A BROCHURE ON
GROSS FIXED CAPITAL FORMATION IN
KERALA
1980-81 TO 1985-86**

**DIRECTORATE OF
ECONOMICS & STATISTICS
THIRUVANANTHAPURAM
1990**

G O V E R N M E N T O F K E R A L A

*
**

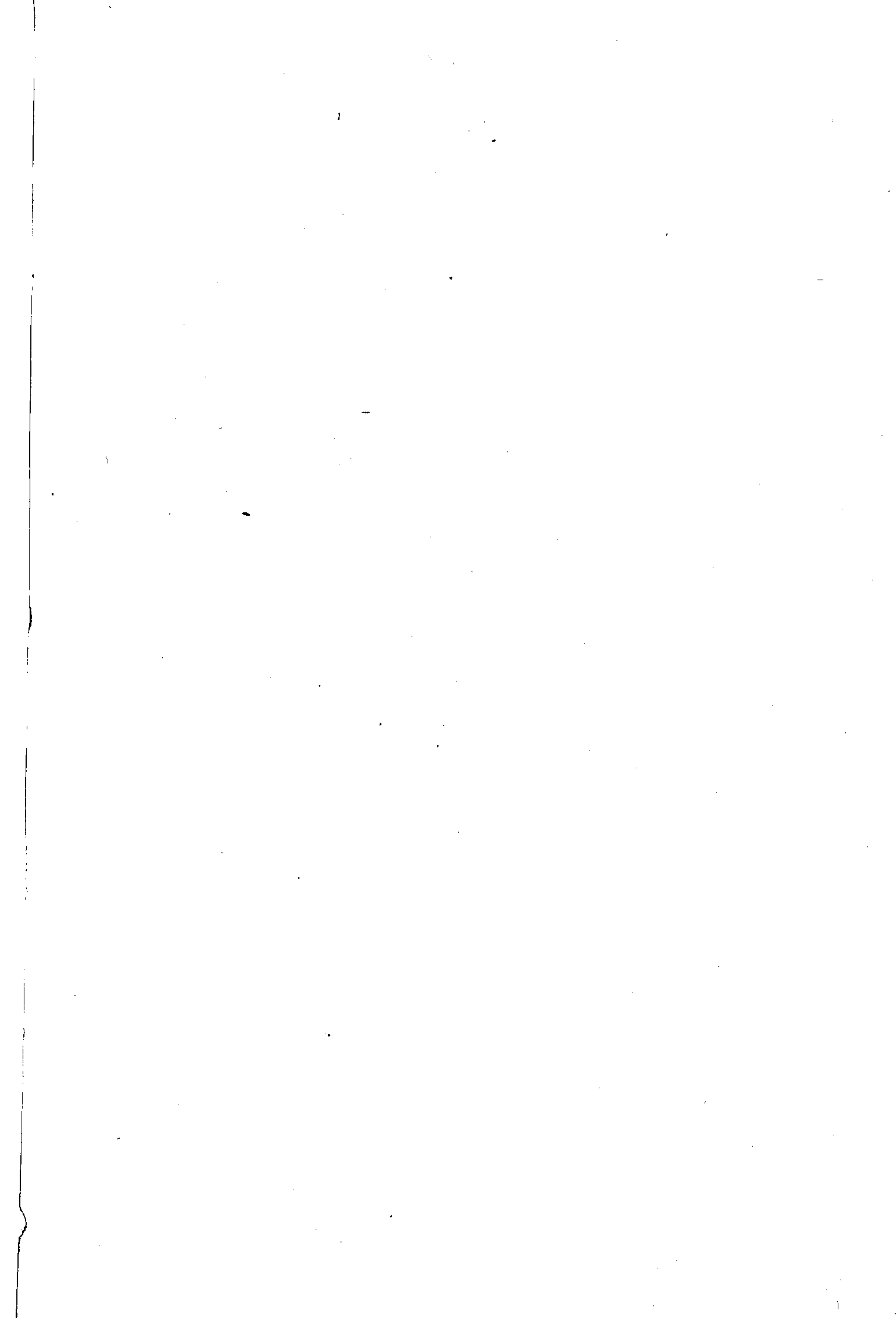
**
*

REPORT ON
GROSS FIXED CAPITAL FORMATION IN KERALA
(1980-81 to 1985-86)

*
**

**
*

STATE INCOME DIVISION
DEPARTMENT OF ECONOMICS AND STATISTICS
TRIVANDRUM
1990



P R E F A C E

This Report on "Gross Fixed Capital Formation in Kerala (at current prices)" is the first of its kind brought out by the Department of Economics and Statistics. The data given in the report relate to the years 1980-81 to 1985-86. The main object of the study is to bring together and present the data regarding the growth of capital formation in various sectors. The nature of capital formation in both public and private sectors is also examined. The State Government sector by "Type of Assets" and "By industry of Use" in respect of administrative departments and departmental enterprises are also considered in this volume.

It is hoped that the planners, economists, administrators and Research scholars would find the information contained in this report quite useful to them.

I would like to record my sincere appreciation to Shri. K. Samvarghese who initiated this work and made valuable contributions while he was Assistant Director in this Division. This report is prepared by Shri. K. Radhakrishnan, Research Officer with the assistance of Shri. K. Karunakaran, Research Assistant and Shri. K.K. Thomas, Compiler under the supervision and guidance of Smt. K. Radhamma, Assistant Director. The help rendered by all those who are involved in the preparation of this report, especially the various public bodies who provided the requisite information, is gratefully acknowledged.

Suggestions for further improvement of the report are most welcome.

P.L. SREEDEVI AMMA,
Director of Economics & Statistics.

Trivandrum,
5.2.1990.



C O N T E N T S

Chapter I - Methodology

Chapter II - Analytical Interpretation

Tables

Table I - Gross Fixed Capital Formation for the years from 1980-'81 to 1985-'86 by industry of use - at current prices.

Table II - Percentage Distribution of Gross Fixed Capital Formation by industry of use for the years from 1980-81 to 1985-86 (at current prices).

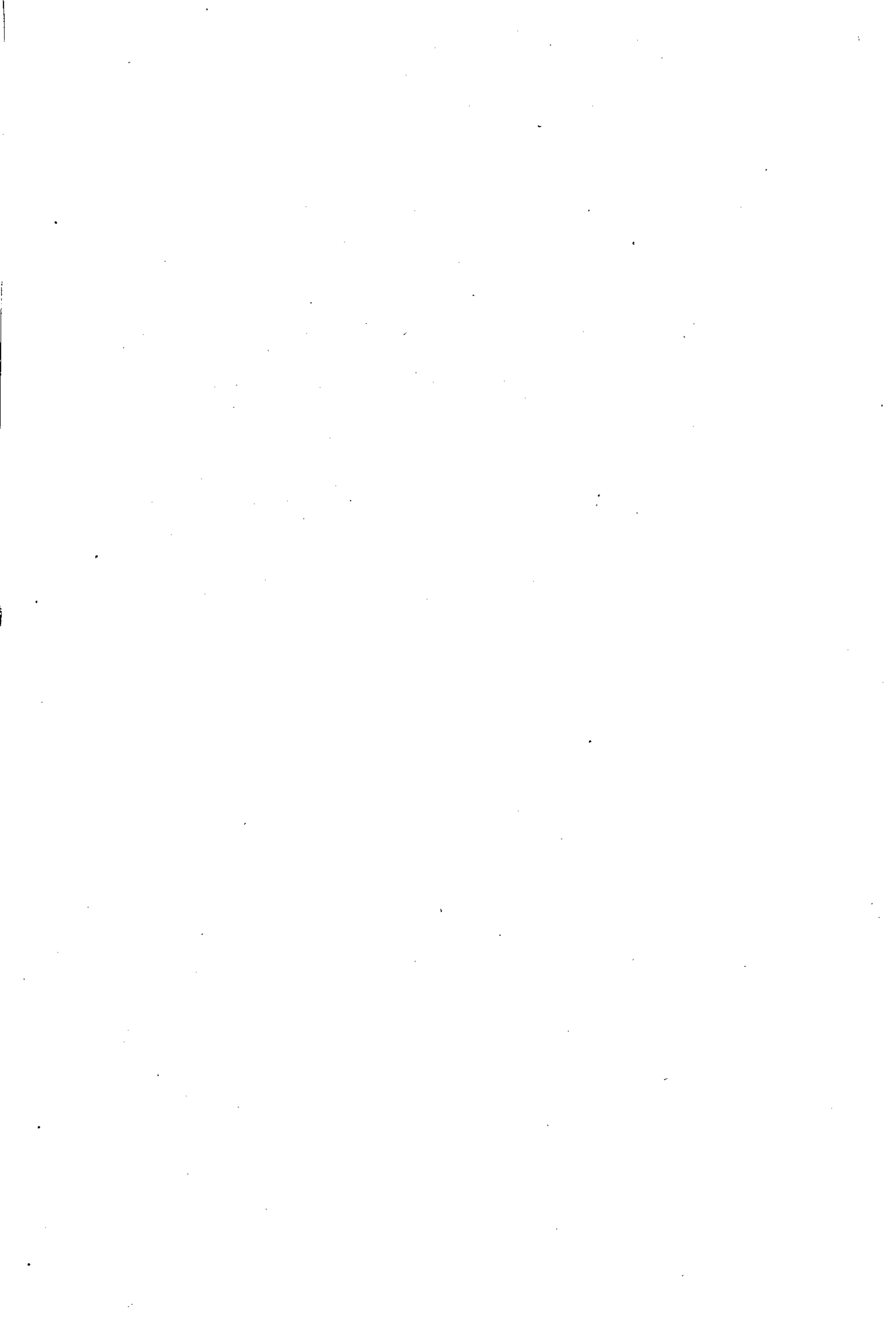
Table III - Gross Fixed Capital Formation by industry of use in public and private sectors for the years from 1980-'81 to 1985-'86.

Table IV - Gross Capital Formation in State Govt. Sector in Kerala by 'Type of Institutions' and by 'Type of Assets' at current prices from 1980-81 to 1985-'86.

Table V - Gross Capital Formation in State Government Sector (Govt. Administration and Departmental Enterprises) in Kerala by industry of use at current prices for the years from 1980-81 to 1985-86.

Table VI - Gross Capital Formation in State Govt. by 'Type of Institution' at current prices from 1980-'81 to 1985-'86'

.....

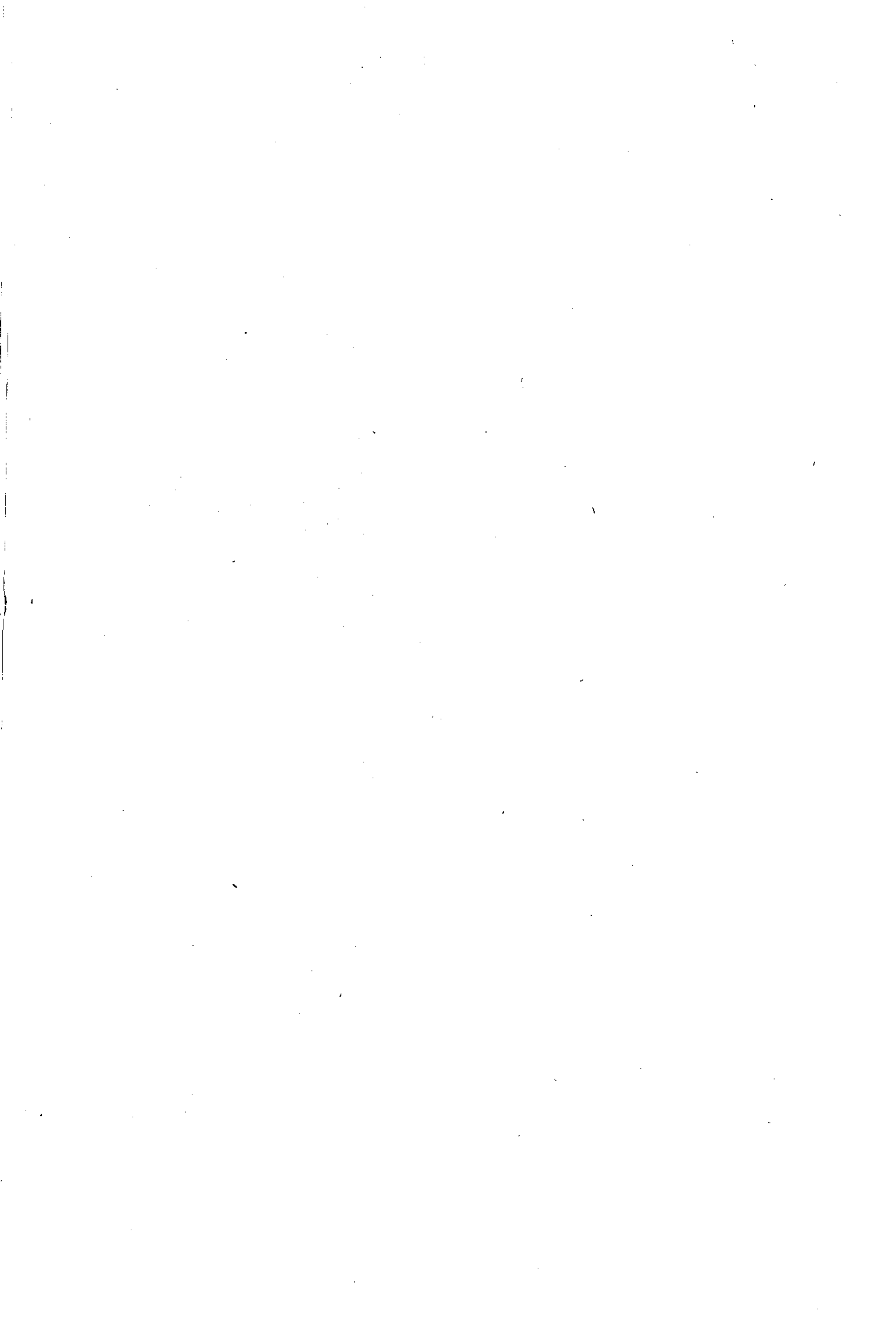


ANNEXURE

Statements

- I Gross Fixed Capital Formation by 'Industry of Use' and 'Type of Institutions' from 1980-'81 to 1985-'86.
- II.A Gross Capital Formation of State Government Administrative Departments in KERALA by 'Type of Assets' at current prices from the year 1980-'81 to 1985-'86.
- II.B Gross Capital Formation of State Government Administrative Departments in Kerala by 'Industry of Use' at current prices from the years from 1980-'81 to 1985-86
- III.A Gross Capital Formation of State Government Departmental Enterprises in Kerala by 'Type of Assets' at current prices from the year 1980-'81 to 1985-'86.
- III.B Gross Capital Formation of State Government Departmental Enterprises in Kerala by 'Type of Assets' and current prices from the year 1980-81 to 1985-86.
- IV.A to F Gross Fixed Capital Formation in Non-Departmental Commercial undertakings - Industry-wise - 1980-'81 to 1985-'86.
- V Gross Fixed Capital Formation (Agriculture - Household sector) at current prices (1980-'81 to 1985-'86).
- VI Gross Fixed Capital Formation in livestock subsector - at current prices (1980-81 to 1985-'86).
- VII Fisheries sector: Gross Fixed Capital Formation - at current prices (1980-'81 to 1985-'86).
- VIII Manufacturing sector - Registered component-wise gross Fixed Capital Formation (1980-'81 to 1985-'86).
- IX Statement of Capital Expenditure of Kerala State Electricity Board (additions to each year) for the years from 1980-'81 to 1985-'86. (Component-wise).
- X Additions to Fixed Assets of Cochin Refineries for the years from 1980-'81 to 1985-'86 (Component-wise).
- XI Ownership of Dwellings - Gross Fixed Capital Formation (Residential Buildings) 1980-'81 to 1985-'86.
- XII Estimates of Gross Fixed Capital Formation from Supra Regional Sectors and Central Government Administration - at current prices (1980-'81 to 1985-'86.)
- XIII Industry-wise Gross Fixed Capital Formation - Private Sector - 1980-'81 to 1985-'86.

.....



GROSS FIXED CAPITAL FORMATION AT STATE LEVEL

Chapter I - Methodology

1.1. Introduction

The concept, scope and coverage of gross fixed capital formation at State Level, along with the approach and method of estimation have been briefly described below.

1.2 The concept, scope and coverage

Domestic capital formation is defined as 'that part of the country's current output and imports which is not consumed or exported during the accounting period, but is set aside as addition to its stock of capital goods'. 'Net capital formation' is measured after allowances are made for consumption of fixed capital. Total capital formation consists of fixed capital formation and change in stocks of raw materials, semi finished and finished goods.

Gross fixed capital formation consists of the outlays of industries and producers of government services and of private non-profit services to households on addition to their fixed assets, reduced by their net sales. These include (i) durable goods (the life time of which is one year or more) acquired by producers. (ii) improvement and alteration of the durable goods which significantly extend the expected life time or productivity of assets (iii) new construction and major improvements which extend its life period. (iv) reclamation and improvement of land and the development and extension of timber, tracts, mines, orchards, plantations and similar other agricultural holdings (v) breeding stocks, draught, animals, dairy cattle and the like.

'Non-reproducible' tangible assets, like land, mineral deposits, timber tracts etc. are not included in capital formation, but dealers margin, service charges and other transfer costs in regard to transactions in such assets form part of capital formation. The construction works and durable goods which are meant primarily for military purposes are excluded. Outlays on newly constructed dwellings,

by households and industries, and expenditure on major improvements and alterations of residential buildings form part of fixed capital formation, while the purchase of durable goods by households is not treated as capital formation. Expenditure on intangible assets such as patents, goodwill, and on health research, education etc. for improvement of technology and productivity of working force are excluded from the scope of capital formation.

Gross fixed capital formation include expenditure on land clearance, irrigation works, plantation and cultivation of new timber tracts, new fruit and sap bearing trees, vines, etc. which yield products after a number of years. After such plantations and cultivation become productive, further outlays in respect of the cultivation is considered as intermediate consumption. The clearance and afforestation of timber tracts and forests are considered land improvement activity and are included in gross fixed capital formation.

The capital expenditure on soil conservation activity by the public sector for conservation of forests is included under capital formation. Similar soil conservation activity in the private sector is considered as own account construction which is classified under the construction industry.

Expenditure on current repairs and maintenance incurred for keeping the fixed assets in proper working order does not form part of capital formation. Expenditure on alternations and additions to or replacements of the parts of fixed assets which have an expected life time or use of one year or more and involve substantial outlays and also extend the life of fixed assets or increase their productivity is considered as capital expenditure.

1.3 The significance of capital formation

The 'Capital formation' of a country is considered as a major determinant of its economic growth. The growth of capital formation is thus an index of economic development. It is the capital formation that leads to the fuller utilisation of available resources which leads to increase in the size of national output, income and employment and thereby increase the standard of living of the people. It is capital formation that leads to proper exploitation of the natural resources and establishment of different types of industries resulting in increased levels of income of the people. This enables increase in the economic welfare of the society. Thus capital formation can rightly be considered as the key to economic development of an underdeveloped or developing country/region.

1.4 Estimation: the approach

The commodities which enter fixed capital formation is valued at purchasers price which covers all costs connected with the acquisition and installation of the items of assets. Indirect outlays for acquisition of the assets in the form of advertising etc. are excluded. In the case of fixed assets produced on, own account, these are valued at production cost including any imputation in respect of own account labour employed. Estimates of gross fixed capital formation can be prepared (i) by type of assets, (ii) by industry of use.

i. Type of assets

Type of assets consists of construction, machinery and equipment and change in stock. The estimates are prepared separately for these three type of assets. The commodity flow approach is followed for construction works undertaken with the use of specified construction materials and also for machinery and equipment.

The value at site in the accounting year of five basic construction input materials, viz., cement, iron and steel products, timber and round wood, bricks and tiles and permanent fixtures and fittings are considered under 'Construction'.

The various items of machinery and equipment are classified into

- i) Capital goods
- ii) Parts of capital goods
- iii) Partly capital goods
- iv) Parts of partly capital goods.

The total of (i) and specified percentage of (ii) to (iv) on the basis of ASI data, are taken as capital formation.

The estimates of gross domestic fixed capital formation in construction and machinery and equipment are aggregated to arrive at the estimates of gross domestic fixed capital formation by type of assets.

However, due to paucity of data, estimation of gross fixed capital formation by type of asset is attempted only in the Public (State Government) sector in this report.

ii. Industry of use

The methodology adopted is generally on the lines suggested in the "Report of the sub group on State Gross Domestic Product and Expenditure Account" September 1984 published by Central Statistical Organisation.

The expenditure approach is primarily followed for estimation of gross fixed capital formation (GFCF) by industry of use. The whole economy is classified by user industries broadly in terms of the industrial classification used for measurement of net domestic product. Each industrial activity is further divided into public and private sectors wherever relevant. The private sector under each activity has

been further divided into organised and unorganised sectors if the data are available. The public sector is divided into administrative departments of Central and State Governments and enterprises, both departmental and non-departmental.

1.6 Agricultural including livestock

(a) Agriculture proper

The expenditure on GFCF in State Government Departmental enterprises have been culled out from the state government budget document and of the Non-Departmental enterprises from the balance sheet or annual reports of the enterprises.

The source of information of GFCF in the household sector of Agriculture is based on the expenditure on farm business available in AIDIS 1981-82. The base year estimates of gross fixed capital formation of the reporting households in respect of rural and urban sectors are obtained separately from this report.

The two decennial censuses of 1971 and 1981 provide the number of rural and urban households separately. Using the geometric growth rate, the number of households during the years from 1980-81 to 1985-86 have been estimated.

The per household gross fixed capital formation for the base year has been arrived at by using the total gross fixed capital formation and the number of households, as estimated from the survey results separately for rural and urban sectors.

By making use of the per household gross fixed capital formation, thus obtained and the projected number of households from the Census

results, gross fixed capital formation in Farm Business has been estimated both for rural and urban sectors for the years from 1980-81 to 1985-86 at constant prices.

The GFCF at current price has been obtained by using the Index of average daily wages of unskilled workers in construction sector.

The GFCF at current price, thus obtained for rural and urban sectors have been finally aggregated to obtain the GFCF from farm business.

(b) Live stock

To the estimates of Agriculture, proper the value of breeding stock, draught animals, dairy cattle etc. which form part of capital formation has been added. As the annual data on livestock population are not available, the different categories of live stock as given in the quinquennial live stock census have been considered and the number of each category estimated using geometric growth rate.

The data regarding bullocks and bulls over three years not in use, cows over three years not in used, female goats of one year and above not in milk etc. are excluded from the purview of capital formation. The cattle, male over three years cows in milk, buffalows, male over 3 years, she buffaloes in milk, goats - female of one year and over in milk males one year and over (breeding) as provided in the censuses have been considered to form part of capital formation of livestock component. The increments of each category every year is estimated and then evaluated using the average price of the category each year. Only 4% of the male goats have been considered to be the capital formation component of this category.

1.7 Forestry and Logging

The Government of Kerala have taken over the private forests of the state by an Act (No.26/71) on 23.8.1971. Therefore, the capital expenditure on forest preservation, extension etc. of the state is the contribution of the Public sector only. The capital formation component of this sub-sector is obtained from the analysis of the state government budgets.

1.8 Fishing

The Live Stock Censuses of 1977 and 1982 provide information on the number of different categories of mechanised and non-mechanised boats and other major fishing, equipments like fishing gears and catamarans engaged in fishing activity. The number of fishing boats and equipments during the years 1981-82 to 1985-86 has been estimated using the geometric growth rate of the inter census years and then the increment during each year, is worked out. The average price of the different categories of boats and equipments each year collected from the State Department of Fisheries have been used to evaluate the increment of boats each year. The gross capital formation in fisheries sector is thus obtained at current prices.

1.9 Mining and Quarrying

There is no departmental enterprises coming under this sub sector in Kerala.

In the case of non-departmental commercial undertakings, the Kerala Metals and Minerals is considered in public sector. The unorganised sector is estimated on the basis of NSS 29th round.

1.10 Manufacturing (Registered)

Annual Survey of Industries provides data on value of stock and addition to the fixed capital during the accounting years. The details of capital stock separately for (i) land (ii) improvement to land and other construction (iii) building (iv) plant and machinery (v) transport equipment. (vi) tools and other fixed assets and (vii) assets under construction/installation are available. Expenditure on land does not form part of capital formation and hence excluded from the estimates.

1.11 Manufacturing (Un-registered)

Those manufacturing enterprises which do not come under the purview of the Indian Factories Act - 1948, are considered under this subsector. The 29th round of NSS provides data on fixed assets of manufacture and Repair services in the unregistered sector. The whole of the un-registered sector of the manufacturing industry has been brought under the coverage of the survey. The data contained in the report on NSS 29th round has been used to estimate the contribution to gross fixed capital formation from this sub-sector. The additions to fixed assets per enterprise and the estimated number of enterprises, both rural and urban have been considered and the combined estimate of GFCF arrived at for the base year.

The base year estimates are moved to latest years using appropriate indices.

1.12 Electricity, gas and watersupply

Electricity generation and distribution in Kerala is mainly the activity of 'The Kerala State Electricity Board', categorised under N.D.C.Us. The annual accounts of the K.S.E.B. have been analysed and the GFCF estimated. Since the private sectors are covered under A.S.I,

separate estimates have not been prepared under this head.

The estimates of GFCF from 'water supply' relating to Public Sector is prepared on the basis of State Government Budget upto 1984-85. From 1985-86 onwards the schemes under this head are implemented by the 'Water Authority' of Kerala and hence no details are available in the Budget Documents. No data have been received from water authority also and hence not incorporated in this issue.

The Cochin Oil Refineries is engaged in the manufacture of L.P.G. This has been considered to assess the capital formation of the sub sector - gas.

1.13 Construction

The fixed capital formation in the construction sector comprises of net addition to machinery and equipments, tools and implements of construction enterprises. The annual balance sheets/accounts have been analysed and estimates of GFCF obtained. The construction expenditure culled out from the State Government Budget has also been taken into account.

The estimate from private sector is limited to unorganised sector based on N.S.S. 29th round results, due to non-availability of data from other sources.

1.14 Transport, storage and communication

(a) Railways

This being a supra - regional sector, the Central Statistical Organisation is to prepare the state-wise estimates of capital formation and supply the same to the states for incorporation in the state level estimates as recommended by the Regional Accounts Committee (R.A.C). The data have been supplied by Central Statistical Organisation.

(b) Transport by other means and storage

The State Government Budget provides information capital expenditure on mechanised transport - road and water.

In respect of non-departmental enterprises, the Annual Accounts of K.S.R.T.C., the Kerala Inland Navigation Corporation and the Cochin Port Trust have been analysed.

The enterprise survey 1983-84 conducted by Central Statistical Organisation provides information on mechanised and non-mechanised transport in private sector. The base year estimates of GFCF is moved for the latest years using the growth rate observed in the Gross Domestic Product of the respective sector:

In the Public Sector, there is no departmental enterprises in storage. The Ware Housing Corporation and Food Corporation of India are the Non-departmental enterprises of this sector. The annual accounts of these enterprises have been analysed to obtain the capital formation component of storage.

(c) Communication

The Government of India, demands for grants for the Indian Posts and Telegraph department and Ministry of Communication is the main source of information. The activities covered under this sector are Posts and Telegraphs, Telecommunications and overseas communication service. The details of capital expenditure at the national level for posts and Telegraphs and Telecommunications are presented in the budget relating to Posts and Telegraphs Department. As per the recommendation of the Regional Accounts Committee, the Central Statistical Organisation is to prepare the state-wise estimates of fixed capital formation. The Central Statistical Organisation has supplied the estimates.

1.15 Trade, Hotels and Restaurants

The annual accounts of the Non-Departmental Commercial undertakings engaged in trading activities were analysed to obtain the GFCF of these enterprises.

The private section estimates for the base year are prepared on the basis of data available in N.S.S 29th round, Directory Establishment Survey, 1985-86 for Trade and Enterprise Survey on Hotels and Restaurants 1983-84. The base year estimates are moved to later years with the help of gross value added in the sector.

1.16 Banking and Insurance

The state-wise estimates of capital formation in respect of Nationalised banks, Life Insurance Corporation of India, Reserve Bank of India etc. is to be provided by Central Statistical Organisation as recommended by the Regional Accounts Committee. The details have been obtained from the Central Statistical Organisation and incorporated.

1.17 Real Estate, Ownership of Dwellings

GFCF under residential buildings based on AIDIS' 1981-82 has been used for preparing the base year estimates under this head. The base year estimates are moved to later years using the building cost index numbers.

1.18 Public Administration

This sector consists of the capital expenditure of central government administration in respect of the state, state government administration and local bodies-corporations, municipalities and panchayats.

The estimates of capital expenditure in respect of central

government administration at the state level is provided by Central Statistical Organisation.

The state government budgets have been analysed to obtain the capital expenditure of state government administration.

The capital outlay of coporation and municipalities have not been covered in this report as its complete analysis is pending. The construction expenditure and expenditure on machinery are the components of GFCF considered under this sector.

1.19 Other services

The expenditure of state government under this sector is taken from the state governemtn budget. The non-departmental commercial undertakings coming under this sector is also considered.

The GFCF in private sector is computed for the base year as per the enterprise survey, 1983-84 on service sector. The base year estimates are moved forward using the indices of GDF in the respective sectors.

Chapter II

2. Analytical Interpretation

2.1 Industry-wise classification of Gross Fixed Capital Formation

The Estimates of Gross Fixed Capital formation for the years from 1980-81 to 1985-86 are analysed industry-wise. Table I gives the GFCF by industry of use.

On the whole, the total capital formation estimates have shown an

upward trend during all years starting from Rs.744 crores in 1980-81 to Rs.2123 crores in 1985-86. Major portion of the estimates was occupied by 'Real Estate and ownership of dwellings' during all the years ranging from 34 to 44% of the total estimates. This is because of the fact that the estimates of fixed capital formation in residential buildings have been included under this item. The contribution of Agriculture sector stands between 9 to 14% while that of manufacturing industries range from 14 to 25%. The percentage distribution of gross fixed capital formation is given in table II.

Table III given the breakup of gross fixed capital formation both in private and public sectors. This table reveals that the private sector contribution ranges from 63 to 68% of the total estimates during the period under study. The public sector contributes more in the case of Mining and Quarrying, Electricity, Gas and Water supply, Construction, Transport, Storage and Communications, Banking and Insurance, Forestry and Logging, etc.

2.2 Gross Capital Formation in State Government Sector.

The state government sector consists of Administrative Departments and Departmental Enterprises.

1) Administrative Departments

The estimates of Gross Capital Formation under this head are obtained from the budget documents the of State Government for the years 1980-81 to 1985-86. The expenditure approach is followed in the estimation of capital formation from Government Budget. The items such as construction, machinery and equipments, net purchase of second hand physical assets and change in stock were considered for the estimation of Gross Capital Formation.

(ii) Departmental Enterprises

The annual accounts of the Departmental Enterprises included in the State Government Budget were subjected to detailed analysis for the estimation of GCF under this sector.

(a) Gross capital formation by type of assets

The GCF of State Government Administrative Departments and Departmental Enterprises in Kerala by type of assets for the years 1980-81 to 1985-86 are analysed in table IV.

It is observed that the estimates of GCF has increased from Rs.108 crores in 1980-81 to Rs.221 crores in 1985-86. The main component under this sector is construction which consists of buildings, roads and bridges and other constructions. The percentage contribution of construction component under GFCF works out to 94% and 93% during 1980-81 and 1985-86 respectively.

(b) Gross capital formation by, industry of use

An attempt is made to analyse the GCF in respect of State Government Administrative Departments and Departmental Enterprises 'By industry of Use' in Table V. According to the nature of industries the expenditure under various heads of the state government administrative departments and departmental enterprises are classified under Agriculture, Forestry, Fishing, Manufacturing, Construction, Watersupply, other transport, other services and public administration.

This observed that Agriculture and public administration occupy the major share of capital formation during all the years from 1980-81 to 1985-86. For example, while Agriculture constituted 44% and 31% during 1980-81 and 1985-86 respectively, the contribution of public administration worked out to 36% and 57% during the period.

(c) Gross capital formation by type of institutions

The classification of state Government sector by type of institutions comprises of government administrative departments and departmental enterprises. These are analysed in Table VI.

The above table indicates that the contribution of administrative department is more than the departmental enterprises all over the period under estimation. There is gradual increase of GCF in the case of administrative departments except in the year 1984-85. The percentage contribution of administrative department ranges from 53 to 66%, while that of departmental enterprises from 47% to 34%.

It is observed that in the case of government administrative department the year 1985-86 accounts the highest share of GCF, i.e. 66.40%. The share of departmental enterprises is highest during 1980-81 (46.98%) when compared to other years.

2.3 Conclusion

The estimation of GFCF in the State covered mainly private and public sectors. In the public sector almost all the major industries are covered. Eventhough the coverage is greater in public sector, private sector occupies the major share of the total GCF. There is an increase of about 285% in the GCF during 1985-86 over 1980-81 (i.e. from 744 crores to 2123 crores).

The GCF has increased from Rs.108 crores in 1980-81 to Rs.221 crores in 1985-86 in the case of state government sector.

Detailed statement on the Gross Fixed Capital Formation in respect of all the important activities are given in annexure to this report.

...

I. Gross fixed capital formation for the years from 1980-81 to 1985-86 - By industry of use
at current prices

Sl. No.	Industrial classification	(Rs. in lakhs)					
		1980-81	1981-82	1982-83	1983-84	1984-85	1985-86
		3	4	5	6	7	8
1.	Agriculture	10505	12487	13889	15989	16744	19278
2.	Forestry and logging	268	414	249	334	227	243
3.	Fishing	700	1011	1330	1908	2619	3554
4.	Mining and quarrying	1410	2407	1604	1109	3148	2335
5.	Manufacturing	10060	22657	29652	24883	20337	46585
6.	Electricity, gas and watersupply	6143	7493	8225	13387	10369	27567
7.	Construction	(-)343	405	(-)493	124	(-)480	(-)829
8.	Transport, storage & communication	4231	5756	7807	9901	9688	13589
9.	Trade, hotels & restaurants	1248	1091	1406	1622	1549	1561
10.	Banking and insurance	584	568	1328	1191	1363	2038
11.	Real estate & ownership of dwellings	32100	37169	43817	56016	63558	72495
12.	Public administration	4522	5600	6503	10227	11469	17169
13.	Other services	2941	3960	4745	2836	4563	6759
	Total	74369	101018	120062	139527	145154	212344

P. Provisional.

II. Gross Fixed Capital Formation - by industry of use - at current prices for the years from 1980-81 to 1985-86 (Percentage Distribution)

Sl. No.	Industrial classification	1980-81	1981-82	1982-83	1983-84	1984-85	1985-86
1	2	3	4	5	6	7	8
1.	Agriculture	14.13	12.36	11.57	11.46	11.54	9.09
2.	Forestry and logging	0.36	0.41	0.21	0.24	0.16	0.11
3.	Fishing	0.94	1.00	1.11	1.37	1.80	1.67
4.	Mining and Quarrying	1.90	2.38	1.33	0.80	2.17	1.10
5.	Manufacturing	13.53	22.43	24.70	17.83	14.01	21.94
6.	Electricity, Gas and Water Supply	8.26	7.42	6.85	9.59	7.14	12.98
7.	Construction	(-)0.46	0.40	(-)0.41	0.09	(-)0.33	(-)0.39
8.	Transport, Storage & Communication	5.69	5.70	6.50	7.10	6.67	6.40
9.	Trade, Hotel and Restaurants	1.68	1.08	1.17	1.16	1.07	0.73
10.	Banking & Insurance	0.78	0.56	1.11	0.85	0.94	0.96
11.	Real Estate and Ownership of Dwellings	43.16	36.80	36.49	40.15	43.79	34.14
12.	Public Administration	6.08	5.54	5.42	7.33	7.90	8.09
13.	Other Services	3.95	3.92	3.95	2.03	3.14	3.18
	Total	100.00	100.00	100.00	100.00	100.00	100.00

**III. Gross Fixed Capital Formation - By 'Industry of Use' - in Public and Private Sectors
for the years from 1980-81 to 1985-86**

(Rs. in lakhs)

Sl. No.	Sectors	1980-81			1981-82			1982-83		
		Pub-lic	Pri-vate	Total	Pub-lic	Pri-vate	Total	Pub-lic	Pri-vate	Total
		3	4	5	6	7	8	9	10	11
1.	Agriculture	5008	5497	10505	5754	6733	12487	5724	8165	13889
2.	Forestry and Logging	268	-	268	414	-	414	249	-	249
3.	Fishing	-	700	700	-	1011	1011	-	1330	1330
4.	Mining and Quarrying	1341	69	1410	2312	95	2407	1491	113	1604
5.	Manufacturing	4072	5988	10060	6220	16437	22657	5102	24550	29652
6.	Electricity, Gas and Water Supply	6544	(-)401	6143	7027	466	7493	8616	(-)391	8225
7.	Construction	(-)361	18	(-)343	384	21	405	(-)516	23	(-)493
8.	Transport, Storage and Communication	3865	366	4231	5280	476	5756	7210	597	7807
9.	Trade, Hotel and Restaurants	325	923	1248	126	965	1091	269	1137	1406
10.	Banking and Insurance	584	-	584	542	26	568	1329	(-)1	1328
11.	Real Estate and Ownership of Dwellings	-	32100	32100	-	37169	37169	-	43817	43817
12.	Public Administration	4522	-	4522	5600	-	5600	6503	-	6503
13.	Other Services	1091	1850	2941	1769	2191	3960	2313	2432	4745
	Total	27259	47110	74369	35428	65590	101018	38290	81772	120062

(Contd..)

(Table III contd.)

(Rs. in lakhs)

Sl. No.	Sectors	1983-84			1984-85			1985-86		
		Pub-lic	Pri-vate	Total	Pub-lic	Pri-vate	Total	Pub-lic	Pri-vate	Total
1	2	12	13	14	15	16	17	18	19	20
1.	Agriculture	6668	9321	15989	6457	10287	16744	6974	12304	19278
2.	Forestry and Logging	334	-	334	227	-	227	243	-	243
3.	Fishing	-	1908	1908	-	2619	2619	-	3554	3554
4.	Mining and Quarrying	1004	105	1109	2993	155	3148	2177	158	2335
5.	Manufacturing	4997	19886	24883	4503	15834	20337	4474	42111	46585
6.	Electricity, Gas and Water Supply	13046	341	13387	10729	(-)360	10369	27123	444	27567
7.	Construction	95	29	124	(-)510	30	(-)480	(-)867	38	(-)829
8.	Transport, Storage & Communications	9166	735	9901	8749	939	9688	12479	1110	13589
9.	Trade, Hotels and Restaurants	325	1297	1622	131	1418	1549	103	1458	1561
10.	Banking and Insurance	1185	6	1191	1340	23	1363	1997	41	2038
11.	Real Estate & Ownership of Dwellings	-	56016	56016	-	63558	63558	-	72495	72495
12.	Public Administration	10227	-	10227	11469	-	11469	17169	-	17169
13.	Other Services	(-)10	2846	2836	1381	3182	4563	3028	3731	6759
	Total	47037	92490	139527	47469	97685	145154	74900	137444	212344

IV. Gross Capital Formation in State Government Sector in Kerala by 'Type of Institutions' and by 'Type of Assets' at Current Prices from 1980-81 to 1985-86 (Rs. in lakhs)

Years/Type of Institution	Construction				Machinery and Equipment				Net purchase of sec. hand- equi-phy- sical Assets	Gross fixed capital formation	Change in stock	Gross capital formation
	Build- ing & Bri- dges	Roads & cons- truc- tion	Other cons- truc- tion	Total cons- truc- tion (Col. 2-4)	Plant and mach- inery	Tran- sport Equip- ment	Total mach- inery equi- pment	8				
1980-81												
Govt. Administration	1242	1415	2717	5374	563	20	583	2	5959	(-)	215	5744
Dept. Enterprises	14	9	4861	4884	117	3	120	-	5004		86	5090
Total	1256	1424	7578	10258	680	23	703	2	10963	(-)	129	10834
1981-82												
Govt. Administration	1927	1525	4020	7472	805	52	857	-	8329	(-)	955	7374
Dept. Enterprises	15	21	5587	5623	111	22	133	--	5756		245	6001
Total	1942	1546	9607	13095	916	74	990	-	14085	(-)	710	13375

(Contd..)

Table IV Contd.)

	1	2	3	4	5	6	7	8	9	10	11	12
1982-83												
Govt. Administration		1379	1964	4726	8069	608	289	897	2	8968	(-)811	8157
Dept. Enterprises		12	26	5569	5607	120	-	120	-	5727	62	5789
Total		1391	1990	10295	13676	728	289	1017	2	14695	(-)749	13946
1983-84												
Govt. Administration		2492	4822	8752	16066	957	286	1243	6	17315	(-)3380	13935
Dept. Enterprises		228	13	6637	6878	515	5	520	-	7398	(-)221	7177
Total		2720	4835	15389	22944	1472	291	1763	6	24713	(-)3601	21112
1984-85												
Govt. Administration		2646	4185	2347	9178	632	201	833	4	10015	(-)913	9102
Dept. Enterprises		348	8	6705	7061	376	3	379	-	7440	(-)723	6717
Total		2994	4193	9052	16239	1008	204	1212	4	17455	(-)1636	15819
1985-86												
Govt. Administration		3738	4565	6646	14949	1236	256	1492	-	16441	(-)1749	14692
Dept. Enterprises		186	26	7111	732	218	9	227	-	7550	(-)117	7433
Total		3924	4591	13757	2227	1454	265	1719	-	23991	(-)1866	22125

V. Gross Capital Formation in State Government Sector (Government Administration and Departmental Enterprises) in Kerala 'By Industry of Use' at Current Prices for the years from 1980-81 to 1985-86

(Rs. in lakhs)

Sl. No.	Industry of Use	Y e a r s																	
		1980-81	1981-82	1982-83	1983-84	1984-85	1985-86	1980-81		1981-82		1982-83		1983-84		1984-85		1985-86	
		(Accts)	%	(Accts)	%	(Accts)	%	(Accts)	%	(Accts)	%	(Accts)	%	(Accts)	%	(Accts)	%	(Accts)	%
1	2	3	4	5	6	7	8	9	10	11	12	13	14	15	16	17	18	19	20
1.	Agriculture	4758	43.92	5567	41.62	5431	38.94	6380	30.22	6222	39.33	6821	30.83						
2.	Forestry	184	1.70	260	1.94	181	1.30	285	1.35	195	1.23	215	0.97						
3.	Manufacturing (3.1+3.2)	14	0.13	10	0.06	3	0.02	10	0.05	140	0.89	68	0.31						
3.1	Printing press	4	0.04	10	0.06	3	0.02	9	0.04	140	0.89	68	0.31						
3.2	Milk supply	10	0.09	-	-	-	-	1	0.01	-	-	-	-						
4.	Construction	(-)421	(-)3.89	(-)224	(-)1.64	(-)28	(-)0.20	83	0.38	(-)535	(-)3.38	(-)892	(-)4.03						
5.	Water supply	1254	11.57	1410	10.54	798	5.72	6171	29.23	(-)24	(-)0.15	-	-						
6.	Other transport (6.1+6.2+6.3)	134	1.24	164	1.22	174	1.25	502	2.38	160	1.01	329	1.49						
6.1	Port, pilotage, lighthouse and lightship	109	1.01	133	0.99	142	1.02	159	0.75	119	0.75	225	1.02						
6.2	Civil aviation	-	-	-	-	-	-	-	-	-	-	-	-						
6.3	Others	25	0.23	31	0.23	32	0.23	343	1.63	41	0.26	104	0.47						
7	Other services (7a+7b+7c+7d)	985	9.09	1574	11.76	2134	15.30	(-)119	(-)0.56	1232	7.79	2945	13.30						
7.a	Education	569	5.25	1009	7.54	644	4.62	811	3.84	864	5.46	2271	10.26						
7.b	Medical	278	2.57	254	1.90	116	0.83	(-)414	(-)1.96	339	2.14	674	3.04						
7.c	Family welfare	-	-	-	-	-	-	(-)516	(-)2.44	-	-	-	-						
7.d	Public health and sanitation	138	1.27	311	2.32	1374	9.85	-	-	29	0.19	-	-						
8	Public Administration	3926	36.24	4614	34.50	5253	37.67	7800	36.95	8429	53.28	12639	57.13						
	Total	10834	100.00	13375	100.00	13946	100.00	21112	100.00	15819	100.00	22125	100.00						

VI. Gross Capital Formation in State Government (Government Administration and Departmental Enterprises) Sector in Kerala by 'Type of Institution' at Current Prices from 1980-81 to 1985-86.

Sl. No.	Type of Institution	Year						(Rs. in Lakhs)
		1980-81 (Accts)	1981-82 (Accts)	1982-83 (Accts)	1983-84 (Accts)	1984-85 (Accts)	1985-86 (Accts)	
1	2	3	4	5	6	7	8	
1.	General Administrative Department	5744 (53.02)	7374 (55.13)	8157 (58.49)	13935 (66.01)	9102 (57.54)	14692 (66.40)	
2.	Departmental Enterprises	5090 (46.98)	6001 (44.87)	5789 (41.51)	7177 (33.99)	6717 (42.46)	7433 (33.60)	
	Total Gross Capital Formation	10834 (100.00)	13375 (100.00)	13946 (100.00)	2112 (100.00)	15819 (100.00)	22125 (100.00)	

**Annexure I - Gross Fixed Capital Formation 'By Industry of Use and by Type of Institution
from 1980-81 to 1985-86 - Detailed Statement (At Current Prices)**

(Rs. in lakhs)

Sl. No.	Industry of Use	1980-81				1981-82				1982-83			
		Pub-lic	Pri-vate	House hold	Total	Pub-lic	Pri-vate	House hold	Total	Pub-lic	Pri-vate	House hold	Total
1	2	3	4	5	6	7	8	9	10	11	12	13	14
I.	Agriculture												
1.	Govt. Administration and Departmental Enterprises	4758	-	-	4758	5567	-	-	5567	5431	-	-	5431
2.	N.D.C.Us	250	-	-	250	187	-	-	187	293	-	-	293
3.	Household sector	-	-	5358	5358	-	-	6522	6522	-	-	7884	7884
4.	Live stock	-	139	-	139	-	211	-	211	-	281	-	281
	Sub-total	5008	139	5358	10505	5754	211	6522	12487	5724	281	7884	13889
II.	Forestry & Logging												
1.	Govt. Administration and Departmental Enterprises	184	-	-	184	260	-	-	260	181	-	-	181
2.	N.D.C.Us	84	-	-	84	154	-	-	154	68	-	-	68
	Sub-Total	268	-	-	268	414	-	-	414	249	-	-	249
III.	Fishing												
	Mechanised, non-mechanised and other major fishing equipments	-	700	-	700	-	1011	-	1011	-	1330	-	1330
	Sub-Total	-	700	-	700	-	1011	-	1011	-	1330	-	1330
IV.	Mining & Quarrying												
a.	N.D.C.Us	1341	-	-	1341	2312	-	-	2312	1491	-	-	1491
b.	Private Sector	-	69	-	69	-	95	-	95	-	113	-	113
	Sub-Total	1341	69	-	1410	2312	95	-	2407	1491	113	-	1604

(Contd.)

(Annexure I contd.)

Sl. No.	Industry of Use	1983-84				1984-85				1985-86			
		Pub-lic	Pri-vate	House hold	Total	Pub-lic	Fri-vate	House hold	Total	Pub-lic	Pri-vate	House hold	Total
1	2	15	16	17	18	19	20	21	22	23	24	25	26
I.	Agriculture												
1.	Govt. Administration and Departmental Enterprises	6380	-	-	6380	6222	-	-	6222	6821	-	-	6821
2.	N.D.C.Us	288	-	-	288	235	-	-	235	153	-	-	153
3.	Household sector	-	-	8989	8989	-	-	9930	9930	-	-	11819	11819
4.	Live stock	-	332	-	332	-	357	-	357	-	485	-	485
	Sub-Total	6668	332	8989	15989	6457	357	9930	16744	6974	485	11819	19278
II.	Forestry & Logging												
1.	Govt. Administration and Departmental Enterprises	285	-	-	285	195	-	-	195	215	-	-	215
2.	N.D.C.Us	49	-	-	49	32	-	-	32	28	-	-	28
	Sub-Total	334	-	-	334	227	-	-	227	243	-	-	243
III.	Fishing												
1.	Mechanised, non-mechanised and other major fishing equipments	-	1908	-	1908	-	2619	-	2619	-	3554	-	3554
	Sub-Total	-	1908	-	1908	-	2619	-	2619	-	3554	-	3554
IV.	Mining & Quarrying												
a.	N.D.C.Us	1004	-	-	1004	2993	-	-	2993	2177	-	-	2177
b.	Private Sector	-	105	-	105	-	155	-	155	-	158	-	158
	Sub-Total	1004	105	-	1109	2993	155	-	3148	2177	158	-	2335

(Contd.)

(Annexure I contd.)

Sl. No.	Industry of Use	1980-81				1981-82				1982-83			
		Pub-lic	Pri-vate	House hold	Total	Pub-lic	Pri-vate	House hold	Total	Pub-lic	Pri-vate	House hold	Total
V.	Manufacturing												
	Registered factories (ASI)	-	5533	-	5533	-	15904	-	15904	-	23897	-	23897
	Govt. Sector	14	-	-	14	10	-	-	10	3	-	-	3
	N.D.C.Us	4058	-	-	4058	6210	-	-	6210	5099	-	-	5099
	Private Sector (Unregistered)	-	455	-	455	-	533	-	533	-	653	-	653
	Sub-Total	4072	5988	-	10060	6220	16437	-	22657	5102	24550	-	29652
VI.	Electricity, Gas and Water Supply												
a.	Electricity	5255	-	-	5255	5380	-	-	5380	7420	-	-	7420
b.	Gas	35	-	-	35	237	-	-	237	398	-	-	398
c.	Water Supply	1254	(-)401	-	853	1410	466	-	1876	798	(-)391	-	407
	Sub-Total	6544	(-)401	-	6143	7027	466	-	7493	8616	(-)391	-	8225
VII.	Construction												
a.	State Govt. Sector	(-)421	-	-	(-)421	(-)224	-	-	224	(-)28	-	-	(-)28
b.	N.D.C.Us	60	-	-	60	608	-	-	608	(-)488	-	-	(-)488
c.	Private Sector	-	18	-	18	-	21	-	21	-	23	-	23
	Sub-Total	(-)361	18	-	(-)343	384	21	-	405	(-)516	23	-	(-)493
VIII.	Transport, Storage and Communication												
a.	Railways	525	-	-	525	1372	-	-	1372	1412	-	-	1412
b.	Transport by other means and storage												
i.	State Govt. Sector by Type of Industry of Use	134	-	-	134	164	-	-	164	174	-	-	174

(Contd..)

(Annexure I contd.)

Sl. No.	Industry of Use	1983-84				1984-85				1985-86			
		Pub-lic	Pri-vate	House hold	Total	Pub-lic	Pri-vate	House hold	Total	Pub-lic	Pri-vate	House hold	Total
1	2	15	16	17	18	19	20	21	22	23	24	25	26
V.	Manufacturing												
	Registered Factories (ASI)	19242	19242	-	19242	-	15163	-	15163	-	41301	-	41301
	Govt. Sector	10	-	-	10	140	-	-	140	68	-	-	68
	N.D.C.Us	4987	-	-	4987	4363	-	-	4363	4406	-	-	4406
	Private Sector(Un-regd)	-	644	-	644	-	671	-	671	-	810	-	810
	Sub-Total	4997	19886	-	24883	4503	15834	-	20337	4474	42111	-	46585
VI.	Electricity, Gas and Water Supply												
a.	Electricity	6751	-	-	6751	7874	-	-	7874	15145	-	-	15145
b.	Gas	124	-	-	124	2879	-	-	2879	11978	-	-	11978
c.	Water Supply	6171	341	-	6512	(-)24	(-)360	-	(-)384	NA	444	-	444
	Sub-Total	13046	341	-	13387	10729	(-)360	-	10369	27123	444	-	27567
VII.	Construction												
a.	State Govt. Sector	83	-	-	83	(-)535	-	-	(-)535	(-)892	-	-	(-)892
b.	N.D.C.Us	12	-	-	12	25	-	-	25	25	-	-	25
c.	Private Sector	-	29	-	29	-	30	-	30	-	38	-	38
	Sub-Total	95	29	-	124	(-)510	30	-	(-)480	(-)867	38	-	(-)829
VIII.	Transport, Storage and Communication												
a.	Railways	2285	-	-	2285	2930	-	-	2930	3838	-	-	3838
b.	Transport by other means and storage	-	-	-	-	-	-	-	-	-	-	-	-
1.	State Govt. Sector by type of Industry of use	502	-	-	502	160	-	-	160	329	-	-	329

(Contd.)

(Annexure I contd.)

Industry of use Type of Institution	1980-81			1981-82			1982-83						
	Pub- lic	Pri- vate	Total	Pub- lic	Pri- vate	Total	Pub- lic	Pri- vate	Total				
1	2	3	4	5	6	7	8	9	10	11	12	13	14
2. N.D.C.Us	1637	-	1637	-	1637	1346	-	-	1346	2570	-	-	2570
3. Private Sector	-	365	365	476	-	476	-	-	476	-	597	-	597
c. Communication	1569	-	1569	2398	-	2398	-	-	2398	3054	-	-	3054
Sub-Total	3865	366	4231	5280	476	5756	-	-	5756	7210	597	-	7807
IX. Trade, Hotel and Restaurants													
a. N.D.C.Us	325	-	325	126	-	126	-	-	126	269	-	-	269
b. Private Sector	-	923	923	-	965	965	-	-	965	-	1137	-	1137
Sub-Total	325	923	1248	126	965	1091	-	-	1091	269	1137	-	1406
X. Banking & Insurance	584	-	584	542	26	568	-	-	568	1329	(-)	-	1328
Sub-Total	584	-	584	542	26	568	-	-	568	1329	(-)	-	1328
XI. Real Estate and Ownership of Dwellings													
Sub-Total	-	-	32100	32100	-	37169	-	-	37169	-	-	43817	43817
XII. Public Administration													
Govt. Administration													
State Govt. Sector & Departmental Enterprises	3926	-	3926	4614	-	4614	-	-	4614	5253	-	-	5253
Central Govt. Admn.	596	-	596	986	-	986	-	-	986	1250	-	-	1250
Sub-Total	4522	-	4522	5600	-	5600	-	-	5600	6503	-	-	6503
XIII. Other Services													
State Govt. Sector, Govt. Administration and Deptl. Enterprises	985	-	985	1574	-	1574	-	-	1574	2134	-	-	2134
N.D.C.Us	106	-	106	195	-	195	-	-	195	179	-	-	179
Private Sector	-	1850	1850	-	2191	2191	-	-	2191	-	2432	-	2432
Sub-Total	1091	1850	2941	1769	2191	3960	-	-	3960	2313	2432	-	4745
Grand Total	27259	9652	37458	35428	21899	101018	43691	38290	30071	51701	120062		

(Contd.)

(Annexure I contd.)

Industry of Use	1983-84				1984-85				1985-86			
	Pub-lic	Pri-vate	House hold	Total	Pub-lic	Pri-vate	House hold	Total	Pub-lic	Pri-vate	House hold	Total
1	2	3	4	5	6	7	8	9	10	11	12	13
2.	N.D.C.Us	2455	-	2455	1697	-	1697	3597	-	-	-	3597
3.	Private Sector	-	735	735	-	939	939	-	1110	-	-	1110
c.	Communication	3924	-	3924	3962	-	3962	4715	-	-	-	4715
	Sub-Total	9166	735	9901	8749	939	9688	12479	1110	-	-	13589
IX.	Trade Hotel and Restaurants											
a.	N.D.C.Us	325	-	325	131	-	131	103	-	-	-	103
b.	Private Sector	-	1297	1297	-	1418	1418	-	1458	-	-	1458
	Sub-Total	325	1297	1622	131	1418	1549	103	1458	-	-	1561
X.	Banking & Insurance	1185	6	1191	1340	23	1363	1997	41	-	-	2038
	Sub-Total	1185	6	1191	1340	23	1363	1997	41	-	-	2038
XI.	Real Estate and Ownership of Dwellings											
	Sub-Total	-	-	56016	-	-	63558	-	-	-	72495	72495
XII.	Public Administration											
	Govt. Administration											
	State Govt. Sector and Departmental Enterprises	7800	-	7800	8429	-	8429	12639	-	-	-	12639
	Central Govt. Admn.	2427	-	2427	3040	-	3040	4530	-	-	-	4530
	Sub-Total	10227	-	10227	11469	-	11469	17169	-	-	-	17169
XIII.	Other Services											
	State Govt. Sector, Govt. Administration & Deptl. Enterprises											
	N.D.C.Us	109	-	109	149	-	149	83	-	-	-	83
	Private Sector	-	2846	2846	-	3182	3182	-	3731	-	-	3731
	Sub-Total	(-)10	2846	2836	1381	3182	4563	3028	3731	-	-	6759
	Grant Total	47037	27435	65005	139527	47469	73488	145154	74900	53130	84314	212344

**Annexure II.A - Gross Capital Formation of State Government Administrative Departments in Kerala
by 'Type of Assets' at Current Prices for the years 1980-81 to 1985-86.**

Sl. No.	Disbursement	Year					(Rs. in lakhs)
		1980-81 (Accts)	1981-82 (Accts)	1982-83 (Accts)	1983-84 (Accts)	1984-85 (Accts)	
1	2	3	4	5	6	7	8
I	Construction (a+b+c)	5374	7472	8069	16066	9178	14949
a.	Buildings	1242	1927	1379	2492	2646	3738
b.	Road and bridges	1415	1525	1964	4822	4185	4565
c.	Other construction	2717	4020	4726	8752	2347	6646
II	Machinery & Equipment (a+b)	583	857	897	1243	833	1492
a.	Plant and machinery	563	805	608	957	632	1236
b.	Transport equipment	20	52	289	286	201	256
III.	Net Purchase of second physical assets	2	-	2	6	4	-
IV	Gross Fixed Capital Formation (Item I+II+III)	5959	8329	8968	17315	10015	16441
V.	Change of Stock	(-)215	(-)955	(-)811	(-)3380	(-)913	(-)1749
VI.	Gross Capital Formation (Item IV+V)	5744	7374	8157	13935	9102	14692

**Annexure II.B - Gross Capital Formation of State Government Administrative Departments in Kerala
by 'Industry of Use at Current Prices for the years 1980-81 to 1985-86**

(Rs. in Lacs)

Sl. No.	Industry of Use	Y e a r s					
		1980-81	1981-82	1982-83	1983-84	1984-85	1985-86
1	2	3	4	5	6	7	8
1.	Construction	(-)421	(-)224	(-)28	83	(-)535	(-)892
2.	Water supply	1254	1410	798	6171	(-)24	-
3.	Other Services	985	1574	2134	(-)119	1232	2945
a.	Education	569	1009	644	811	864	2271
b.	Medical	278	254	116	(-)414	339	674
c.	Family welfare	-	-	-	(-)516	-	-
d.	Public Health & Sanitation	138	311	1374	-	29	-
	Total 1 to 3	1818	2760	2904	6135	673	2053
4.	Public Administration	3926	4614	5253	7800	8429	12639
	Total	5744	7374	8157	13935	9102	14692

**Annexure III.A - Gross Capital Formation of State Government Departmental Enterprises in Kerala
by 'Type of Assets' at Current Prices from the years 1980-81 to 1985-86**

Sr. No.	Disbursement	(Rs. in lakhs)					
		1980-81 (Accts)	1981-82 (Accts)	1982-83 (Accts)	1983-84 (Accts)	1984-85 (Accts)	1985-86 (Accts)
1	2	3	4	5	6	7	8
I.	Construction (a+b+c)	4884	5623	5607	6878	7061	7323
a.	Buildings	14	15	12	228	348	186
b.	Road & Bridges	9	21	26	13	8	26
c.	Other construction	4861	5587	5569	6637	6705	7111
II.	Machinery & equipment (a+b)	120	133	120	520	379	227
a.	Plant and machinery	117	111	120	515	376	218
b.	Transport equipment	3	22	-	5	3	9
III.	Net purchase of second hand physical assets	-	-	-	-	-	-
IV.	Gross Capital Formation (Item I+II+III)	5004	5756	5727	7398	7440	7550
V.	Change of Stock	86	245	62	(-)221	(-)723	(-)117
VI.	Gross Capital Formation (Item IV+V)	5090	6001	5789	7177	6717	7433

**Annexure III.B - Gross Capital Formation of State Government Departmental Enterprises in Kerala
by 'Industry of Use' at Current Prices from the years 1980-81 to 1985-86.**

Sl. No.	Industry of Use	Year						(Rs. in lakhs)
		1980-81	1981-82	1982-83	1983-84	1984-85	1985-86	
1	2	3	4	5	6	7	8	
1.	Agriculture	4758	5567	5431	6380	6222	6821	
2.	Forestry	184	260	181	285	195	215	
3.	Manufacturing (3.1 + 3.2)	14	10	3	10	140	68	
3.1	Printing press	4	10	3	9	140	68	
3.2	Milk Supply	10	-	-	1	-	-	
4.	Construction	-	-	-	-	-	-	
5.	Electricity	-	-	-	-	-	-	
6.	Railway	-	-	-	-	-	-	
7.	Communication	-	-	-	-	-	-	
8.	Other Transport (8.1 + 8.2 + 8.3)	134	164	174	502	160	329	
8.1	Port, pilotage, lighthouse	109	133	142	159	119	225	
8.2	Civil aviation	-	-	-	-	-	-	
8.3	Others	25	31	32	343	41	104	
9.	Trade hotels and restaurants	-	-	-	-	-	-	
10.	Banking and Insurance	-	-	-	-	-	-	
	Total	5090	6001	5789	7177	6717	7433	

ANNEXURE IV.A - Gross Fixed Capital Formation in Non-Departmental Commercial undertakings in Kerala (Category-wise)

1980-81

Sl. No.	Category	(Rs. in '000)									
		Land development	Building	Capital work in progress	Other construction	Expenditure during construction	Transport equipments	Machinery & office equipments	Total		
1	2	3	4	5	6	7	8	9	10		
I.	Agriculture	12098	4562	1038	4559	1269	1079	407	25012		
II.	Forestry & Logging	3829	1143	2939	55	-	317	109	8392		
III.	Manufacturing (registered)	172	35989(-)	149902	277126	28857	4674	208891	405807		
IV.	Mining & quarrying	-	29	133875	(-)488	-	191	542	134149		
V.	Trade, Hotels & Restaurants	(-)157	19136	5234	1438	1843	1693	3279	32466		
VI.	Other services	24	1030	-	1635	6785	848	304	10626		
VII.	Transport, by other means & storage	-	20374	167121	12994	- (-)	38641	1872	163720		
VIII.	Construction	-	134	-	1443	-	1357	3055	5989		
	Total	15966	82397	160305	298762	38754 (-)	28482	218459	786161		

ANNEXURE IV.B - Gross Fixed Capital Formation in Non- Departmental Commercial Undertakings in Kerala (category-wise)

1981-82

Sl. No.	Category	(Rs. in '000)									
		Land development	Buildings	Capital work in progress	Other construction	Expenditure during construction	Transport equipments	Machinery & office equipments	Total		
1	2	3	4	5	6	7	8	9	10		
I.	Agriculture	9351	4996	649	939	-	1352	1432	18719		
II.	Forestry & Logging	5172	6903	-	3	3299	9	17	15403		
III.	Manufacturing (Registered)	277	52764	228752	67269	54330	5221	212413	621026		
IV.	Mining & Quarrying	-	21	207101	-	23587	4	486	231199		
V.	Trade, Hotels & Restaurants	1678	2206	3947	1623	-	1135	2002	12591		
VI.	Other services	733	11940	88	2332	(-)8370	5	12761	19489		
VII.	Transport by other means, and storage	-	812	112705	1870	-	16795	2409	134591		
VIII.	Construction	-	-	-	658	58369	222	1526	60775		
	Total	17211	79642	553242	74694	131215	24743	233046	1113793		

ANNEXURE IV.C - Gross Fixed Capital Formation in Non-Departmental Commercial Undertakings in Kerala (category-wise)

1982-83

(Rs. in '000)

Sl. No.	Category	Land development	Buildings	Capital work in progress	Other construction	Expenditure during construction	Transport equipments	Machinery & other office equipments	Total
I.	Agriculture	11864	8180	3413	9946	(-)5041	385	598	29345
II.	Forestry & Logging	2904	3782	-	19	-	34	16	6755
III.	Mining & Quarrying	-	5385	141767	417	-	3	1482	149054
IV.	Manufacturing (regd)	1128	69681	86793	56772	41129	3372	250990	509865
V.	Other services	-	5254	-	5685	6113	272	532	17856
VI.	Trade, Hotels & Restaurants	177	7414	6958	4060	(-)48	1860	6440	26861
VII.	Transport by other means, and storage	4765	16775	174863	(-)9974	-	69279	1289	256997
VIII.	Construction	-	-	(-)49342	227	(-)444	229	481	(-)48849
	Total	20838	116471	364452	67152	41709	75434	261828	947884

ANNEXURE IV.D - Gross Fixed Capital Formation in Non-Departmental Commercial
Undertakings in Kerala (category-wise)

1983-84 (Rs. in '000)

Sl. No.	Category	Land development	Buildings	Capital work in progress	Other construction	Expenditure during construction	Transport equipments	Machinery & office equipments	Total
1	2	3	4	5	6	7	8	9	10
I.	Agriculture	10423	4889	869	4814	4838	1171	1823	28827
II.	Forestry & Logging	-	2286	-	99	2518	1	28	4932
III.	Mining & Quarrying	-	42820	56321	195	-	79	990	100405
IV.	Manufacturing (Regd.)	8330	61183	22986	104923	99488	3163	198620	498693
V.	Transport and Storage	-	29447	177381	(-)4172	-	41952	910	245518
VI.	Other services	-	5295	(-)82	(-)813	5734	408	346	10888
VII.	Trade, Hotels & Restaurants	4	9879	4324	5427	77	3029	9722	32462
VIII.	Construction	-	-	-	234	25	210	777	1246
	Total	18757	155799	261799	110707	112680	50013	213216	922971

ANNEXURE IV.E - Gross Fixed Capital Formation in Non- Departmental Commercial
Undertakings in Kerala (category-wise)

1984-85

(Rs. in '000)

Sl. No.	Category	Land development	Buildings	Capital work in progress	Other construction	Expenditure during construction	Transport equipments.	Machinery & other office equipment	Total
1	2	3	4	5	6	7	8	9	10
I.	Agriculture	594	7724	-	3874	1861	582	3494	23480
II.	Forestry & Logging	-	862	-	2088	-	127	129	3206
III.	Mining & Quarrying	-	33835(-)	427641	33599	-	2231	657253	299277
IV.	Manufacturing (Registered)	1179	161810(-)	225962	101278	28622	4095	365324	436346
V.	Trade, Hotels & Restaurants	34	2336	3815	3741	-	208	2923	13057
VI.	Other services	3	9831	-	(-)744	4587	65	1156	14898
VII.	Transport by other means, and storage	-	(-)51551	130320	1429	1986	83385	4090	169659
VIII.	Construction	-	-	-	640	169	261	1397	2467
	Total	7161	164847(-)	519468	145905	37225	90954	1035766	962390

ANNEXURE IV.F - Gross Fixed Capital Formation in Non- Departmental Commercial
Undertakings in Kerala (category-wise)

1985-86

(Rs. in '000)

Sl. No.	Category	1	2	3	4	5	6	7	8	9	10
		Land development	Buildings	Capital work in progress	Other construction	Expenditure during construction	Transport equipments	Machinery & other office equipments	Total		
I.	Agriculture	7700	3228	(-)432	4391	(-)661	699	369	15294		
II.	Forestry & Logging	1350	1382	-	10	-	11	88	2841		
III.	Mining & Quarrying	-	-	-	127	-	24	217527	217678		
IV.	Trade, Hotels and Restaurants	1030	1062	2789	3486	-	469	1414	10250		39
V.	Other Services	26	5521	(-)499	1204	1139	176	687	8254		
VI.	Transport & Storage	-	130561	198257	16731	1105	10206	2854	359714		
VII.	Manufacturing (Regd)	407	49306	103167	87486	34773	3490	161944	440573		
VIII.	Construction	-	-	-	640	169	261	1397	2467		
	Total	10513	191060	303282	114075	36525	15336	386280	1057071		

ANNEXURE V - Gross Fixed Capital Formation of (Agriculture - Household Sector)

Years	(Rs. in lakhs)		
	Rural	Urban	Total
1	2	3	4
1980-81	4307	1051	5358
1981-82	5212	1310	6522
1982-83	6274	1610	7884
1983-84	7146	1843	8989
1984-85	7853	2077	9930
1985-86	9395	2424	11819

ANNEXURE VI - Gross Fixed Capital Formation in Livestock - Subsector - at Current Prices
(1980-81 to 1985-86)

Category	(Rs. in '000)						
	1980-81	1981-82	1982-83	1983-84	1984-85	1985-86	
1	2	3	4	5	6	7	
1. Cattle male over three years	(-)17027	(-)16745	(-)14385	(-)13684	(-)16011	(-)16086	
2. Cows in milk	34165	41137	45371	49415	54649	66310	
3. Buffaloes - male over three years	(-)5472	(-)5653	(-)5607	(-)5983	(-)6903	(-)6689	
4. She buffalows in milk	(-)1036	(-)1103	(-)1121	(-)963	(-)1046	(-)1044	
5. Goats - females 1 year over in milk	3233	-	-	-	-	-	
6. Goats - males 1 year over	-	3423	3796	4374	4968	6017	
7. Total	13863	21059	28054	33159	35657	48508	

ANNEXURE VII - Gross Fixed Capital Formation - at Current Prices
 Fisheries sector (1980-81 to 1985-86)

Type of Boats

	(Rs. in '000)						
	1980-81	1981-82	1982-83	1983-84	1984-85	1985-86	
	2	3	4	5	6	7	
M e c h a n i s e d b o a t s							
1. Gill Nitters		31350	37720	48880	60480	74400	
2. Trawlers	24800		87550	124888	174666	241965	
3. Liners	42186	63356	7464	9009	10318	11715	
4. Others	5830	6655	7704	9257	10746	12341	
N o n - m e c h a n i s e d b o a t s							
1. Beachscine boats							
2. Plant blink boats	(-) 12300	(-) 15825	(-) 14560	(-) 13950	(-) 13400	(-) 13225	41
3. Dugsoat canoes	17250	27900	31920	38520	46000	56310	
4. Catamarams	(-) 9925	(-) 15240	(-) 20130	(-) 21060	(-) 21905	(-) 22610	
5. Others	(-) 1605	(-) 1824	(-) 2168	(-) 2192	(-) 2340	(-) 3014	
Total	(-) 1905	(-) 2148	(-) 2513	(-) 2512	(-) 2646	(-) 3025	355357
	70007	101078	132987	190840	261919		

ANNEXURE VIII - Gross Fixed Capital Formation 1980-81 to 1985-86
Registered manufacturing sector

Components	(Rs. in lakhs)					
	1980-81	1981-82	1982-83	1983-84	1984-85	1985-86
I	2	3	4	5	6	7
1. Improvement to land	2369	254	612	(-)197	(-)4	448
2. Building	538	1090	2547	878	788	4966
3. Plant and M/C	(-)76	1547	10844	(-)450	1885	18905
4. Transport equipment	309	157	67	190	(-)26	224
5. Tools and other fixed assets	(-)3716	2263	(-)379	1332	(-)301	9604
6. Assets under construction	315	5935	3637	10024	3657	(-)2713
7. Net addition	(-)261	11246	17328	11777	5999	31434
8. Depreciation	5393	5124	6178	7806	8804	10311
9. Total	5132	16370	23506	19583	14803	41745
10 Less water supply	(-)401	466	(-)391	341	(-)360	444
11 Gross Fixed Capital Formation	5533	15904	23897	19242	15163	41301

ANNEXURE IX - Statement of capital expenditure of Kerala State Electricity Board for the years from 1980-81 to 1985-86 (additions each year)

Sl. No.	Years	Land	Build- ing	Capital			Expend- iture const- ruction	Trans- port equip- ment	Machi- nery & other office equip- ment	Total
				work in prog- ress	Other const- ruction	7				
1	2	3	4	5	6	7	8	9	10	
1.	1980-81	-	13469	158838	209708	138838	2516	2084	525453	
2.	1981-82	-	17616	96202	323204	96202	2756	1997	537977	
3.	1982-83	-	9179	244501	242189	244501	1433	240	742043	
4.	1983-84	-	13566	238333	183636	238333	741	476	675085	
5.	1984-85	-	8668	320448	136882	320448	-	909	787355	
6.	1985-86	-	10933	469196	564109	469196	231	801	1514466	
	Total	-	73431	1527518	1659728	1507518	7677	6507	4782379	

ANNEXURE X - Addition to Fixed Assets of Cochin Refineries for the year
from 1980-81 to 1985-86

Years	Land development	Building	Capital work in progress	Other construction	Expenditure during construction	Transport equipment	Machinery & other office equipment	Total	
									1
1980-81	-	-	63	Nil	80	73	2043	1208	3467
1982-83	-	-	483	nil	147	20682	535	1901	23748
1982-83	-	-	1013	Nil	75	878	1238	36592	39796
1983-84	-	-	392	Nil	66	7804	999	3179	12440
1984-85	-	-	4599	Nil	-	11028	1407	270903	287937
1985-86	-	-	31289	Nil	1183	5171	2141	1158027	1197811

44

ANNEXURE XI - Ownership of Dwellings - Gross Fixed Capital Formation (Residential buildings)
at Current Prices (1980-81 to 1985-86)

Years	Rural		Urban		Total
	1	2	3	4	
1980-81	-	-	-	-	-
1981-82	-	24454	7646	-	32100
1982-83	-	28178	8991	-	37169
1983-84	-	33053	10764	-	43817
1984-85	-	42042	13974	-	56016
1985-86	-	47459	16099	-	63558
		53851	18644		72495

ANNEXURE XII - Estimates of Gross Fixed Capital Formation from Supra regional sectors and Central Government Administration - at Current Prices

Sectors/Years	(Rs. in Lakhs)						
	1980-81	1981-82	1982-83	1983-84	1984-85	1985-86	
1	2	3	4	5	6	7	
1. Railways	525	1372	1412	2285	2930	3838	
2. Communication	1569	2398	3054	3924	3962	4715	
3. Banking & Insurance	584	542	1329	1185	1340	1997	
4. Central Govt. Administration	596	986	1250	2427	3040	4530	

Source: Central Statistical Organisation.

ANNEXURE XIII - Industry-wise Gross Fixed Capital Formation - Private Sector - at Current Prices (1980-81 to 1985-86)

Sectors/Years	(Rs. in Lakhs)						
	1980-81	1981-82	1982-83	1983-84	1984-85	1985-86	
1	2	3	4	5	6	7	
Mining & Quarrying	69	95	113	105	155	158	
Manufacturing (Un-registered)	455	533	653	644	671	810	
Construction	18	21	23	29	30	38	
Transport & Storage	366	476	597	735	939	1110	
Trade, Hotels & Restaurants	923	965	1137	1297	1418	1458	
Other services	1850	2191	2432	2846	3182	3731	

/Typed by K. Raveendran, U.D. Typist/

Printed at DES Offset Press, Trivandrum.

29

