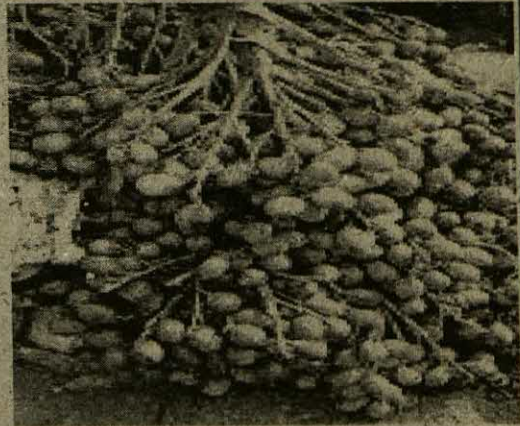
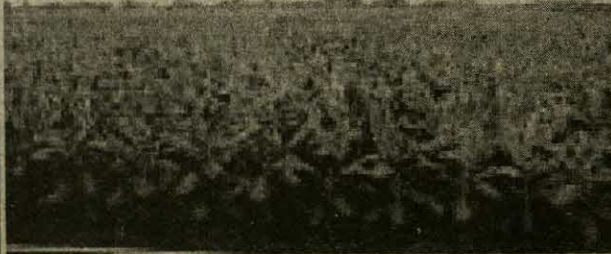
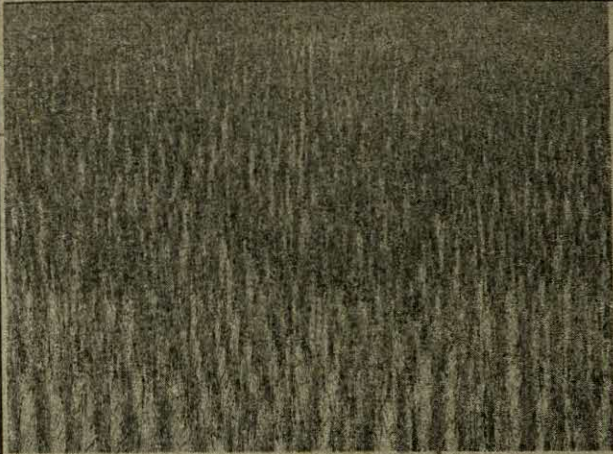




Government of Kerala



Index Number of

Area, Production and Yield of Crops

Department of Economics & Statistics

Thiruvananthapuram-2011

Website: www.ecostat.kerala.gov.in, Email: ecostatdir@gmail.com



Government of Kerala

**Index Number of
Area, Production and Yield of Crops**

**Department of Economics & Statistics, Kerala
Thiruvananthapuram-2011**

Website: www.ecostat.kerala.gov.in, Email: ecostatdir@gmail.com



PREFACE

Report on **Index Number of Area, Production and Yield of Crops** is one of the important Publications of the Department of Economics and Statistics, Govt. of Kerala. This report helps to study the changes in area, production and productivity of crops. The Index of Food area of Food crops shows continuous decreasing trend in the state. It covers 36 crops under two main groups and 8 subgroups. This report shows the trends from the year 1975-76 to 2008-09.

This report was prepared by A.R Yamuna, Assistant Director, Agricultural Statistics Division (EARAS) of the Directorate of Economics & Statistics. I hope this report will be much useful to those engaged and interested in Agricultural sector, Planners, Administrators, and Research Scholars etc.

Suggestions for the improvement of future issues of this report are welcome.

Thiruvananthapuram
25.02.2011.

V. Ramachandran
DIRECTOR



Contents

		Page
	Index Number of Area, Production and Yield of Crops	1
<i>Table 1</i>	Index Numbers Of Area, Production And Productivity Of Food Crops, Non Food Crops And All Crops	5
<i>Table 2</i>	Sub Group Wise Index Of Area, Production And Productivity	6
<i>Table 3</i>	Index Number Of Area, Production And Productivity Of Individual Crops	10
<i>Table 4</i>	Index Of Net Area Sown And Cropping Intensity	22

Report on Index Number of Area, Production and Yield of Crops

Introduction:- The prime need of human being is food. Agriculture provides basic essential food items for direct consumption. It also provides raw material for industries which meet the essential need for living. According to 2001 census, 15.8% of the workers of Kerala state peruses agriculture as primary means of livelihood. About 10.3% of the state domestic product is derived from agriculture.

On the other hand, agriculture production is a biological process generally influenced by uncertain factors like rainfall, flood, sunshine, temperature etc and is therefore subject to wide fluctuations. The basic purpose of framing the index numbers of agricultural economy is to study the trends over time and to assess the relative contribution of the area and yield to the increase in over-all agricultural production over a period of time. Index numbers of area under crops, production and productivity of crops are being compiled at the state level. The purpose of these index numbers is to study the trends of production to assess the relative contribution of area and yield in the variations of overall agricultural production over a period of time. In order to assess the trends in net area sown, cropping intensity corresponding indices are also calculated.

Coverage:- The index numbers of agriculture commodities cover 36 crops under two main groups and 8 sub-groups. The crops and groups are listed below.

A) Food Grains

- I. Cereals - Paddy, Jower, Ragi and Other cereals.
- II. Sugar crops - Sugarcane
- III. Spices & Condiments - Pepper, Ginger, Turmeric, Nutmeg, Cardamom, Arecanut, Clove, Tamarind, Garlic
- IV. Fruits and Vegetables - Papaya, Jack, Mango, Chillies, banana, Plantain, Drumstick, Pineapple, Cashew.
- V. Tuber crops - Tapioca, Sweet Potato

B) Non-Food Crops

- I. Oil Seeds - Sesamum, Groundnut, Coconut
- II. Fiber drugs & Narcotics - Cotton, Tobacco, Betel Leaves
- III. Plantation crops - Tea, Coffee, Rubber, Cocoa

Base Period - The base period for these indices is taken as the triennium ending agricultural year 2001-02=100.

The computation of various indices are detailed below:-

1. **Index of Area under crops**:- As the areas under crops can be added hectre by hectre in the existing series by pooling together the indices of area under different crops, for the computation of indices for subgroups, groups and all crops no explicit weightage has been given. The subgroup, groups and all crops indices can be worked out directly from the area under the different categories of crop in different years.

$$\text{Ie., index of Area} = \frac{a_{ij}}{a_{io}} \times 100 = I_{Aij}$$

Where a_{ij} = the area under i th crop in the j th year

a_{io} = the area under i th crop in the base year

2. **Index of production**: - For individual items, the index of production is calculated using the formula

$$I_{Pij} = \frac{P_{ij}}{P_{io}} \times 100$$

For any subgroup or group of items, for calculating the index of production weights have to be assigned since the production of various crops cannot be added together. So price per unit of various crops in the base period have been taken as the weights or in other words the value weights are the price weights and the formula used is Laspeyres' one.

$$\text{Ie., Index of production} = \frac{\sum p_{ij} P_{io}}{\sum p_{io} P_{io}} \times 100$$

Where P_{io} is the average price per unit of the i th crop in the base period.

$$\text{Index of yield} = \frac{\text{Index of production}}{\text{Index of Area}} \times 100$$

Index of net area sown:

Due to the mixed cropping pattern and the availability of irrigation facilities, a considerable increase in the double or multiple cropped area. Therefore the gap between the gross area and the net area sown are widening. In order to have a measure of the rise or fall in the cultivated area, the index of net area sown is calculated as follows

$$\text{Index of Net area sown} = \frac{N_j}{N_o} \times 100$$

Where N_j – Net area sown in the j th year

N_o – Net area sown in the base period

Index of cropping intensity:-

As stated earlier with the improvement in irrigation facilities and other measures for intensification of agriculture, there is a considerable increase in the double or multiple cropped areas. In order to assess the trends in intensity which means the ratio of total cropped area to net area sown, the index of cropping intensity is completed.

ie., index of cropping intensity = Index of Area under crops / Index of net area sown
x100

Index number of food crops:-

The index of production for food crops with base year as the triennium ending 2001-2002 shows a slight decrease in 2007-08 as compared to previous 5 years. Index of area also decreased in 2008-09 and it was 79. That is index of area shows a gradual decrease from 1975-76 to 2008-09. Index of yield shows a gradual increase from 1975-76 to 2007-08 and it is maximum in the year 2008-09.

Index of Non-food crops:-

The index of production for non-food crops with base year as the triennium ending 2001-2002 shows a gradual increase from 2002-03 and then decreased in 2007-08. Productivity index also shows the same change and index of area shows a decreasing trend.

Index number of all crops:-

Index number of production and productivity of all crops shows an increasing trend from 2002-03 and it was slightly decreased in 2008-09 where as the index of area shows a decreasing trend from 2002-03.

Sub-group wise Index

Index numbers of food grains :-

Index number of area and production of food grains shows a decreasing trend from 1975-76 to 2007-08 where as the productivity index was steady from 1975-76 to 1985-86 and then shows an increasing trend up to 1994-95 and a maximum productivity index in 1999-2000 and decreasing thereafter.

Index of spices and condiments:-

Area, production and productivity index of spices and condiments shows an increasing trend from 1975-76 to 2005-06 and then shows a decreasing trend in area and production index for the last two years.

Fruits and vegetables index:-

Area, production and productivity index of fruits and vegetables shows an increasing trend from 1975-76 to 2005-06 and then shows a decreasing trend in area and production index for the last two years.

Tubers Index:-

Area and production index of tuber crops shows a decreasing trend from 1975-76 to 2007-08 and the productivity index shows a gradual increase from 1975-76 to 2008-2009.

Oil seeds index:-

Area, production and productivity index of oil seeds shows gradual increase from 1977-78 to 2000-01 and then index of area decreases where as production and productivity indices increases.

Fiber drug and Narcotics index:-

Area and production index of fiber drug and narcotics shows an increasing trend from 1977-78 to 1997-98 and then shows a decreasing trend where as productivity index shows an increasing trend from 1975-76 to 1986-87 and then shows a decreasing trend and it was very less for the last three years.

Plantation crops index:-

Area, production and productivity indices show a gradual increase from 1975-76 to 2007-08.

Index numbers of individual crops:-

The index number of area and production for rice with the base year as triennium ending 2001-02 showed a steady decrease from the beginning to end where as the productivity shows a steady increase and it was maximum in the year 2006-07.

Index number of area and production of pulses also shows a steady decrease from the beginning to end where as its productivity increases and it reached a maximum value in 2004-05 and then shrunk again for the next three years.

The index numbers of area and production of Arecanut, Banana and Black pepper shows a steady increase from 1975-76 to 2008-09 except black pepper. It was decreased in 2008-09 and the productivity index of Banana shows a fluctuating change and it was maximum in 1993-94.

Index of Net Area sown and Index of Cropping Intensity

Index of Net Area sown is almost steady from 1975-76 to 1988-89 and then shows an increase from 1989-90 to 1997-98 and again decreased from 1998-90 onwards and it was minimum in 2008-09.

Index of cropping intensity was maximum in 1980-81 & 1981-82 and it was around 100 for the rest of years.

Table -1 INDEX NUMBERS OF AREA, PRODUCTION AND PRODUCTIVITY OF FOOD CROPS, NON FOOD CROPS AND ALL CROPS
(Base period triennium ending 2001-02= 100)

Year	FOOD CROPS INDEX			NON FOOD CROPS INDEX			TOTAL		
	Area	Production	Productivity	Area	Production	Productivity	Area	Production	Productivity
1975-76	147	102	70	67	43	64	99	76	77
1976-77	143	96	67	67	43	65	97	73	75
1977-78	140	91	65	66	41	62	97	69	71
1978-79	137	109	80	66	42	64	96	79	83
1979-80	133	97	73	67	41	61	95	72	76
1980-81	135	96	71	68	41	60	96	71	74
1981-82	135	95	70	69	41	60	97	71	73
1982-83	131	94	72	70	43	62	95	71	75
1983-84	128	93	73	72	38	52	94	69	73
1984-85	125	87	70	75	47	63	95	69	73
1985-86	122	89	73	77	51	66	95	72	76
1986-87	121	90	75	78	47	60	95	71	74
1987-88	116	92	79	84	50	59	96	73	76
1988-89	116	94	81	88	61	70	99	79	80
1989-90	117	99	84	90	64	71	100	83	83
1990-91	113	96	85	94	65	69	100	82	82
1991-92	111	94	84	95	71	75	101	84	83
1992-93	111	96	87	97	79	81	101	88	87
1993-94	109	96	88	97	83	86	101	90	89
1994-95	108	101	94	99	87	88	101	95	93
1995-96	106	99	93	99	88	88	102	94	92
1996-97	104	104	101	99	92	93	101	99	98
1997-98	100	101	101	98	94	96	99	98	99
1998-99	96	99	103	98	94	96	97	97	100
1999-00	100	101	102	100	100	100	100	101	101
2000-01	101	100	99	100	100	100	101	100	100
2001-02	99	98	99	99	99	100	100	99	99
2002-03	99	109	110	99	102	104	99	106	107
2003-04	97	108	112	99	108	110	98	108	110
2004-05	99	113	114	99	111	113	100	112	113
2005-06	98	119	122	100	118	119	99	119	120
2006-07	92	108	118	99	119	121	97	113	117
2007-08	82	101	123	96	113	117	92	106	116
2008-09	79	106	133	94	117	124	92	111	121

Table - 2

SUB GROUP WISE INDEX OF AREA, PRODUCTION AND PRODUCTIVITY

(Base period triennium ending 2001-02= 100)

Year	FOOD GRAINS INDEX			SUGAR CROPS INDEX		
	Area	Production	Productivity	Area	Production	Productivity
1975-76	257	180	70	184	112	61
1976-77	250	169	68	173	108	62
1977-78	246	174	71	160	101	63
1978-79	234	171	73	206	130	63
1979-80	232	175	75	188	122	65
1980-81	234	171	73	194	129	66
1981-82	236	180	76	203	133	66
1982-83	227	176	77	189	116	61
1983-84	216	163	75	195	232	119
1984-85	214	169	79	189	114	60
1985-86	198	158	80	189	114	60
1986-87	194	153	79	213	154	72
1987-88	177	139	79	199	144	72
1988-89	170	137	80	199	143	72
1989-90	172	154	90	194	144	74
1990-91	165	147	89	184	139	75
1991-92	160	143	90	151	114	76
1992-93	159	147	92	147	133	90
1993-94	150	136	90	151	136	90
1994-95	148	132	89	152	144	95
1995-96	139	129	92	136	76	56
1996-97	127	118	93	136	109	80
1997-98	114	103	90	140	113	80
1998-99	104	98	95	149	126	85
1999-00	103	104	101	140	154	111
2000-01	102	101	99	81	74	90
2001-02	95	95	100	79	72	91
2002-03	92	93	101	91	83	92
2003-04	85	77	91	85	78	91
2004-05	86	90	105	46	41	89
2005-06	81	85	105	30	24	83
2006-07	77	86	112	28	18	63
2007-08	68	71	106	72	42	59
2008-09	69	80	115	82	74	90

Table - 2 (Contd.)

Year	SPICES AND CONTINENTS INDEX			FRUITS AND VEGETABLES INDEX		
	Area	Production	Productivity	Area	Production	Productivity
1975-76	72	47	65	75	58	76
1976-77	69	46	67	76	48	63
1977-78	66	42	64	80	61	76
1978-79	69	72	105	83	88	106
1979-80	68	51	74	82	69	84
1980-81	69	48	70	84	70	84
1981-82	69	47	69	83	70	85
1982-83	68	48	70	82	67	82
1983-84	68	39	57	82	61	74
1984-85	69	40	58	78	64	82
1985-86	74	53	71	82	68	83
1986-87	77	52	67	81	71	88
1987-88	83	61	74	82	76	92
1988-89	86	61	71	85	86	100
1989-90	90	69	77	86	85	99
1990-91	85	68	80	87	88	102
1991-92	87	70	81	86	90	104
1992-93	88	71	80	86	91	106
1993-94	90	76	85	88	89	101
1994-95	92	88	95	87	100	116
1995-96	93	92	98	90	99	110
1996-97	92	101	110	93	98	106
1997-98	90	96	106	93	99	106
1998-99	91	94	104	93	96	103
1999-00	98	94	96	98	101	104
2000-01	100	105	105	101	95	94
2001-02	102	101	99	101	103	102
2002-03	104	122	118	102	112	110
2003-04	107	122	114	101	117	116
2004-05	115	129	113	103	132	127
2005-06	116	144	124	102	136	133
2006-07	108	123	115	94	125	133
2007-08	94	113	121	88	114	130
2008-09	87	116	134	82	110	134

Table - 2 (Contd.)

Year	TUBERS INDEX			OIL SEEDS INDEX		
	Area	Production	Productivity	Area	Production	Productivity
1975-76	290	213	74	81	62	77
1976-77	287	203	71	80	60	76
1977-78	257	166	64	77	55	71
1978-79	243	160	66	76	58	76
1979-80	217	162	75	76	55	72
1980-81	218	161	74	74	54	73
1981-82	220	148	67	76	54	71
1982-83	202	152	75	76	57	75
1983-84	207	155	75	77	47	61
1984-85	193	146	76	78	62	80
1985-86	180	130	72	80	61	76
1986-87	171	130	76	80	57	71
1987-88	154	128	83	88	60	69
1988-89	151	125	83	92	76	82
1989-90	142	121	85	94	79	84
1990-91	130	111	85	98	76	78
1991-92	126	105	84	97	83	86
1992-93	120	104	87	99	92	94
1993-94	116	103	89	99	93	94
1994-95	102	93	91	102	96	94
1995-96	101	99	98	102	93	91
1996-97	107	107	100	100	95	94
1997-98	108	109	101	98	94	95
1998-99	100	104	104	98	92	94
1999-00	99	100	101	102	102	100
2000-01	102	102	101	102	99	98
2001-02	99	97	98	99	98	99
2002-03	93	96	103	99	103	104
2003-04	84	101	120	99	106	107
2004-05	79	95	121	99	108	109
2005-06	80	102	126	99	114	115
2006-07	77	100	129	96	109	113
2007-08	75	101	136	90	101	113
2008-09	78	107	139	86	104	121

Table - 2 (Contd.)

Year	FIBRE DRUG AND NARCOTICS INDEX			PLANTATION CROPS INDEX		
	Area	Production	Productivity	Area	Production	Productivity
1975-76	193	161	84	47	23	48
1976-77	184	151	82	47	25	52
1977-78	134	113	84	51	26	51
1978-79	136	111	82	52	26	49
1979-80	135	127	95	55	27	49
1980-81	160	151	94	59	26	45
1981-82	173	163	94	59	27	46
1982-83	153	143	94	61	28	46
1983-84	162	152	94	64	27	43
1984-85	162	152	94	71	31	44
1985-86	153	146	96	74	41	55
1986-87	135	129	96	77	36	47
1987-88	125	118	95	78	38	49
1988-89	160	149	93	82	46	56
1989-90	196	179	92	86	48	55
1990-91	259	233	90	88	52	59
1991-92	286	255	89	92	58	63
1992-93	293	260	89	95	64	67
1993-94	329	292	89	93	71	76
1994-95	294	262	89	94	76	81
1995-96	255	227	89	95	81	86
1996-97	278	255	92	96	88	91
1997-98	346	313	91	98	92	94
1998-99	261	233	89	99	95	96
1999-00	114	104	92	100	98	99
2000-01	96	108	113	100	101	101
2001-02	90	87	96	100	101	100
2002-03	82	82	100	100	102	102
2003-04	71	71	99	101	111	110
2004-05	36	36	100	101	115	114
2005-06	64	46	72	103	124	120
2006-07	31	23	73	105	130	124
2007-08	32	23	73	107	125	116
2008-09	28	21	74	108	130	120

Table 3

**INDEX NUMBER OF AREA, PRODUCTION AND PRODUCTIVITY OF INDIVIDUAL
CROPS (base period triennium ending 2001-02=100)**

Year	PADDY			JOWER			PULSES		
	AI	PI	YI	AI	PI	YI	AI	PI	YI
1975-76	258	179	69	163	144	88	430	209	49
1976-77	251	169	67	101	89	88	419	240	57
1977-78	247	175	71	98	86	88	421	238	56
1978-79	235	172	73	97	86	88	408	235	58
1979-80	233	175	75	98	87	88	400	346	86
1980-81	236	171	72	96	84	88	388	332	85
1981-82	237	181	76	59	52	88	389	329	85
1982-83	229	176	77	63	51	81	345	294	85
1983-84	218	163	75	80	66	83	347	294	85
1984-85	215	169	79	93	92	100	329	301	91
1985-86	200	158	79	76	75	99	326	302	93
1986-87	195	153	78	104	103	99	320	296	93
1987-88	178	139	78	130	129	99	295	275	93
1988-89	170	136	80	210	209	99	292	272	93
1989-90	172	154	90	227	227	100	287	265	93
1990-91	165	146	88	230	230	100	268	244	91
1991-92	159	143	90	262	262	100	263	239	91
1992-93	158	146	92	302	302	100	265	252	95
1993-94	149	135	91	279	279	100	239	226	94
1994-95	148	131	89	235	235	100	230	214	93
1995-96	139	128	92	278	277	100	241	221	92
1996-97	127	117	92	209	209	100	210	202	96
1997-98	114	103	90	147	146	100	173	172	100
1998-99	104	98	94	111	111	100	145	145	100
1999-00	103	104	101	129	129	100	126	127	100
2000-01	102	101	99	24	24	100	80	81	101
2001-02	95	95	100	148	148	100	94	93	99
2002-03	91	93	102	131	121	92	66	68	103
2003-04	85	77	91	108	109	100	69	73	106
2004-05	85	90	106	131	131	100	97	124	128
2005-06	81	85	105	125	125	100	121	117	97
2006-07	78	86	110	93	93	100	79	77	98
2007-08	67	71	106	157	157	100	50	49	97
2008-09	69	80	116	117	118	100	45	44	98

Table - 3 (Contd.)

Year	COTTON			SUGARCANE			TOBACCO		
	AI	PI	YI	AI	PI	YI	AI	PI	YI
1975-76	183	154	84	184	112	62	557	202	36
1976-77	176	147	84	173	108	64	494	172	35
1977-78	128	111	86	160	101	65	371	126	34
1978-79	130	109	84	206	130	65	371	126	34
1979-80	127	125	98	188	122	67	416	143	34
1980-81	151	148	98	194	129	68	506	167	33
1981-82	164	161	98	203	133	67	523	172	33
1982-83	143	140	98	189	116	63	547	162	30
1983-84	153	150	98	195	232	122	506	167	33
1984-85	153	150	98	189	114	62	489	161	33
1985-86	145	145	100	189	114	62	457	154	34
1986-87	128	128	100	213	154	74	406	136	34
1987-88	119	119	100	199	144	74	332	111	34
1988-89	156	156	100	199	143	74	329	110	33
1989-90	193	193	100	194	144	76	305	101	33
1990-91	260	260	100	184	139	77	231	78	34
1991-92	289	289	100	151	114	78	187	63	34
1992-93	297	297	100	147	133	93	150	50	34
1993-94	333	333	100	151	136	93	167	56	34
1994-95	298	298	100	152	144	97	159	53	34
1995-96	258	258	100	136	76	57	139	47	34
1996-97	283	283	100	136	109	82	94	94	100
1997-98	353	353	100	140	113	82	85	85	100
1998-99	267	267	100	149	126	87	38	37	100
1999-00	116	116	100	140	154	114	40	40	100
2000-01	93	93	100	81	74	93	195	195	100
2001-02	91	91	100	79	72	94	65	65	100
2002-03	82	82	100	91	83	94	83	82	100
2003-04	71	71	100	85	78	93	70	69	100
2004-05	36	36	100	46	41	91	37	37	100
2005-06	64	52	81	30	24	85	39	11	29
2006-07	32	25	81	28	18	64	39	8	21
2007-08	31	25	80	72	42	60	39	11	29
2008-09	28	22	81	82	74	92	36	10	29

Table - 3 (Contd.)

Year	ARECANUT			BANANA			BLACK PEPPER		
	AI	PI	YI	AI	PI	YI	AI	PI	YI
1975-76	88	50	56	25	22	88	54	44	82
1976-77	78	49	63	25	22	88	54	44	82
1977-78	71	46	64	23	36	152	50	36	72
1978-79	71	87	121	30	47	153	53	47	89
1979-80	70	47	68	29	45	152	53	52	99
1980-81	70	47	67	32	48	149	54	51	96
1981-82	70	47	66	31	50	156	54	49	92
1982-83	70	48	69	31	45	141	53	44	83
1983-84	68	36	53	34	48	141	53	44	84
1984-85	65	40	62	36	52	142	53	31	59
1985-86	67	46	69	37	59	158	60	60	99
1986-87	66	46	69	42	60	141	64	55	86
1987-88	69	46	67	42	68	159	72	84	116
1988-89	71	50	70	46	71	154	78	78	100
1989-90	72	52	72	47	75	158	83	97	117
1990-91	74	57	77	49	80	161	84	84	101
1991-92	73	57	79	50	83	162	88	91	102
1992-93	73	59	81	53	84	157	91	89	98
1993-94	79	67	84	53	93	172	92	90	98
1994-95	82	76	93	56	93	164	93	107	115
1995-96	81	76	93	58	99	167	95	123	130
1996-97	87	101	115	64	110	169	91	102	112
1997-98	84	102	121	69	119	170	90	83	92
1998-99	84	80	95	68	105	153	91	123	136
1999-00	94	98	104	87	108	123	98	86	87
2000-01	100	103	103	100	89	88	100	110	109
2001-02	107	99	93	113	102	89	101	105	104
2002-03	111	126	112	124	115	91	104	121	117
2003-04	117	124	105	124	120	95	107	124	116
2004-05	123	129	105	131	129	97	118	135	114
2005-06	124	140	112	136	134	97	118	158	133
2006-07	117	129	110	131	126	95	108	116	108
2007-08	114	134	117	132	120	89	87	75	87
2008-09	111	147	132	122	119	96	76	61	80

Table - 3 (Contd.)

Year	CHILLIES			GINGER			SWEET POTATO		
	AI	PI	YI	AI	PI	YI	AI	PI	YI
1975-76	679	599	89	104	70	67	691	280	40
1976-77	705	620	88	92	61	66	701	284	40
1977-78	296	275	93	113	78	68	587	238	40
1978-79	193	176	92	114	79	70	638	374	58
1979-80	224	208	93	126	87	69	583	339	58
1980-81	285	261	92	113	77	68	594	349	59
1981-82	310	284	92	120	83	69	625	367	59
1982-83	305	280	92	113	76	67	588	350	59
1983-84	248	228	92	133	89	67	598	356	59
1984-85	244	224	92	130	100	77	545	411	75
1985-86	251	241	96	140	107	77	567	431	76
1986-87	204	198	97	148	115	78	376	352	93
1987-88	184	180	98	129	110	85	399	299	75
1988-89	182	180	99	127	109	86	373	281	75
1989-90	169	167	99	129	114	89	335	250	74
1990-91	134	133	99	126	110	87	306	229	75
1991-92	130	129	100	138	121	88	289	211	73
1992-93	127	127	101	125	110	88	293	215	73
1993-94	113	113	100	99	91	92	268	194	72
1994-95	155	158	102	124	120	97	234	218	93
1995-96	121	121	101	115	112	97	211	231	109
1996-97	149	151	102	118	112	95	208	213	102
1997-98	102	100	98	110	105	95	165	164	99
1998-99	72	71	98	99	95	96	129	126	97
1999-00	76	76	100	101	100	99	116	113	97
2000-01	55	54	99	104	103	99	96	95	99
2001-02	169	170	101	96	97	101	88	92	104
2002-03	191	193	101	80	78	97	100	111	111
2003-04	166	166	100	76	80	105	118	127	107
2004-05	201	190	95	89	109	123	98	106	108
2005-06	300	292	98	109	136	124	84	95	114
2006-07	345	334	97	99	103	104	59	68	114
2007-08	341	328	97	79	77	97	59	67	114
2008-09	390	381	98	66	74	112	45	51	112

Table - 3 (Contd.)

Year	TURMERIC			TAPIOCA			CARDAMUM		
	AI	PI	YI	AI	PI	YI	AI	PI	YI
1975-76	64	31	48	290	213	74	131	27	21
1976-77	61	26	43	287	203	71	125	19	15
1977-78	95	42	44	257	166	64	126	39	31
1978-79	98	84	85	243	160	66	133	39	29
1979-80	103	91	88	217	162	75	130	44	34
1980-81	84	73	86	218	161	74	131	43	32
1981-82	82	71	87	220	148	67	132	37	28
1982-83	73	62	84	202	152	75	131	25	19
1983-84	81	69	85	207	155	75	132	27	20
1984-85	74	62	83	193	146	76	142	38	26
1985-86	81	74	90	180	130	72	147	44	30
1986-87	83	74	89	171	130	76	152	33	22
1987-88	78	69	88	154	128	83	156	27	18
1988-89	79	69	86	151	125	83	156	38	24
1989-90	75	68	90	142	121	85	156	38	24
1990-91	69	61	88	130	111	85	106	46	43
1991-92	70	62	88	126	105	84	106	46	43
1992-93	76	67	89	120	104	87	105	34	32
1993-94	84	75	89	116	103	89	105	59	56
1994-95	101	110	109	102	93	91	107	63	59
1995-96	102	113	111	101	99	98	107	72	67
1996-97	104	117	112	107	107	100	100	61	60
1997-98	92	102	110	108	109	101	99	70	71
1998-99	95	95	100	100	104	104	100	66	66
1999-00	102	99	97	99	100	101	100	88	87
2000-01	106	107	101	102	102	101	100	101	101
2001-02	92	94	102	99	97	98	100	112	112
2002-03	81	82	102	93	96	103	100	116	115
2003-04	71	67	94	84	101	120	100	118	118
2004-05	74	74	100	79	95	121	100	115	114
2005-06	87	98	112	80	102	126	100	130	130
2006-07	101	118	117	77	100	129	100	114	114
2007-08	81	88	108	75	101	136	96	94	97
2008-09	72	75	105	77	107	139	101	114	113

Table - 3 (Contd.)

Year	PLANTAIN			PINEAPPLE			SESAMUM		
	AI	PI	YI	AI	PI	YI	AI	PI	YI
1975-76	76	78	103	86			917	712	77
1976-77	75	77	103	79			872	742	84
1977-78	73	120	164	62			958	739	76
1978-79	73	121	165	57			959	786	81
1979-80	67	36	54	56			962	764	78
1980-81	64	35	54	52			806	639	78
1981-82	66	36	54	51			821	667	80
1982-83	62	31	49	43	69	161	773	608	78
1983-84	63	34	54	45			822	640	77
1984-85	65	35	54	46	76	164	789	605	76
1985-86	67	36	54	46	76	166	780	617	78
1986-87	64	36	56	42	70	165	776	568	72
1987-88	70	43	61	39	64	164	673	660	97
1988-89	72	44	61	43	70	164	642	338	52
1989-90	73	44	59	44	63	144	588	338	57
1990-91	80	49	61	45	59	130	515	344	66
1991-92	78	48	61	47	60	129	492	331	67
1992-93	82	52	64	48	59	123	438	283	64
1993-94	89	58	65	58	72	125	431	341	78
1994-95	87	58	66	59	74	125	358	310	85
1995-96	86	57	66	72	81	113	342	355	103
1996-97	91	84	93	82	73	89	284	301	105
1997-98	91	89	97	87	71	82	230	232	99
1998-99	94	99	105	86	93	109	180	176	96
1999-00	98	102	104	91	87	95	143	120	83
2000-01	100	100	100	102	107	105	109	133	120
2001-02	102	98	96	107	106	100	48	47	97
2002-03	101	102	101	105	120	115	44	43	97
2003-04	99	99	101	110	120	110	66	48	71
2004-05	101	103	103	121	129	107	48	43	89
2005-06	102	111	109	122	139	113	33	35	105
2006-07	98	108	111	120	130	109	40	49	121
2007-08	95	97	103	108	105	97	29	29	97
2008-09	92	99	107	100	111	112	31	52	161

Table - 3 (Contd.)

Year	TEA			COFFEE			RUBBER		
	AI	PI	YI	AI	PI	YI	AI	PI	YI
1975-76	104	66	63	49	22	44	44	22	51
1976-77	100	63	63	48	23	48	44	24	55
1977-78	100	79	79	62	42	67	45	24	53
1978-79	100	72	72	63	58	92	45	21	47
1979-80	100	80	80	69	46	67	45	24	52
1980-81	100	77	77	69	36	52	50	24	48
1981-82	98	69	70	69	51	75	50	24	48
1982-83	97	69	71	68	33	48	54	26	49
1983-84	97	67	69	74	14	20	57	28	49
1984-85	97	86	89	76			66	33	50
1985-86	96	80	83	78	36	46	70	41	59
1986-87	96	77	80	78	36	46	73	35	48
1987-88	96	79	83	78	35	45	76	37	50
1988-89	96	108	113	78	72	93	80	41	52
1989-90	96	99	104	89	32	36	84	48	57
1990-91	96	92	96	89	32	36	87	53	61
1991-92	96	101	105	99	30	31	90	59	66
1992-93	95	83	87	99	55	55	94	64	68
1993-94	96	94	97	97	70	72	92	71	77
1994-95	96	92	96	97	70	72	94	77	82
1995-96	96	99	103	97	68	70	95	82	87
1996-97	96	105	110	98	72	73	96	89	92
1997-98	96	99	104	98	77	78	98	94	96
1998-99	96	89	93	99	76	77	99	97	98
1999-00	96	94	98	100	92	92	100	99	99
2000-01	102	105	103	100	107	107	100	100	100
2001-02	102	101	99	100	101	101	100	100	100
2002-03	102	84	82	98	96	98	100	103	103
2003-04	106	88	83	100	97	97	101	113	112
2004-05	97	75	78	100	82	82	101	120	118
2005-06	97	86	89	100	91	91	104	128	123
2006-07	98	82	84	100	90	90	106	135	128
2007-08	100	79	79	99	74	74	108	130	121
2008-09	101	79	78	100	87	87	109	136	124

Table - 3 (Contd.)

Year	NUTMEG			GARLIC			CLOVE		
	AI	PI	YI	AI	PI	YI	AI	PI	YI
1975-76							0		
1976-77							0		
1977-78							62		
1978-79							63		
1979-80							69		
1980-81							78		
1981-82							86		
1982-83							107		
1983-84							91		
1984-85							108		
1985-86	41	279	688				106		
1986-87	42	293	705				107		
1987-88	38	273	717				107		
1988-89	41	297	719				115		
1989-90	43	317	729				111		
1990-91	46	339	731				95		
1991-92	48	380	784				92		
1992-93	52	411	789				90		
1993-94	58	450	778				99		
1994-95	60	163	273				94		
1995-96	67	81	122				89		
1996-97	82	82	100	79	79	100	106	102	96
1997-98	84	85	101	114	114	100	100	95	96
1998-99	83	83	100	133	133	100	106	100	94
1999-00	93	93	100	152	152	100	112	111	99
2000-01	99	99	100	96	96	100	97	96	100
2001-02	108	108	100	52	52	100	91	91	100
2002-03	120	119	100	110	110	100	89	93	104
2003-04	138	139	100	114	114	100	90	86	96
2004-05	153	154	100	55	55	100	102	93	91
2005-06	156	157	100	12	12	100	113	107	94
2006-07	192	650	338	39	39	100	133	128	96
2007-08	212	642	302	63	63	100	151	144	94
2008-09	230	644	279	57	57	100	133	128	96

Table - 3 (Contd.)

Year	MANGO			COCONUT			JACK		
	AI	PI	YI	AI	PI	YI	AI	PI	YI
1975-76	77			75	62	82	54		
1976-77	75			76	60	80	54		
1977-78	70			73	55	75	66	85	129
1978-79	69	97	141	72	58	80	64	79	123
1979-80	66	97	146	72	54	75	63	78	124
1980-81	70	103	146	71	54	76	66	82	124
1981-82	68	102	151	73	54	74	65	78	119
1982-83	68	98	144	73	57	78	64	80	125
1983-84	68	70	103	74	47	63	63	76	121
1984-85	67	70	104	75	62	83	62	72	115
1985-86	67	69	104	77	61	79	61	70	114
1986-87	70	73	105	77	57	74	62	51	83
1987-88	76	82	109	84	60	71	68	57	83
1988-89	79	87	109	89	76	85	72	65	90
1989-90	81	82	101	91	78	87	73	72	98
1990-91	85	88	104	95	76	80	76	83	110
1991-92	86	90	104	94	83	89	77	94	122
1992-93	85	97	114	95	92	96	76	95	126
1993-94	88	90	103	96	93	97	80	89	111
1994-95	85	118	138	99	96	97	78	95	121
1995-96	92	119	129	100	93	93	85	91	107
1996-97	95	91	96	98	95	97	92	88	95
1997-98	95	90	95	96	94	97	92	88	96
1998-99	98	92	94	96	92	96	92	102	111
1999-00	102	94	92	101	102	101	100	105	105
2000-01	102	95	93	101	99	99	100	98	98
2001-02	97	111	115	99	98	100	100	97	97
2002-03	97	127	130	98	103	105	99	100	101
2003-04	96	140	146	98	106	108	99	107	108
2004-05	102	192	188	98	108	110	104	109	105
2005-06	99	186	188	98	114	116	102	110	108
2006-07	86	162	188	95	109	115	95	104	111
2007-08	78	149	190	89	101	114	91	97	106
2008-09	75	143	191	86	104	122	85	91	107

Table - 3 (Contd.)

Year	GROUNDNUT			CASHEW NUT			PAPPAYA		
	AI	PI	YI	AI	PI	YI	AI	PI	YI
1975-76	614	1092	178	121	186	154			
1976-77	383	540	141	125	132	106			
1977-78	291	411	141	140	129	92	69		
1978-79	321	423	132	151	128	85	63		
1979-80	292	347	119	155	126	81	63		
1980-81	216	255	118	156	124	80	80		
1981-82	223	265	119	155	120	77	74		
1982-83	237	281	119	156	115	73	67	95	141
1983-84	226	266	118	157	118	75	71		
1984-85	272	364	134	151	110	73	66	66	100
1985-86	253	186	73	152	122	80	68	67	99
1986-87	286	179	63	148	135	91	71	68	96
1987-88	339	431	127	134	124	92	80	78	97
1988-89	305	299	98	138	164	119	83	81	98
1989-90	279	279	100	137	161	118	86	84	98
1990-91	295	295	100	128	156	122	88	86	98
1991-92	323	323	100	124	159	128	86	86	100
1992-93	358	357	100	121	145	120	84	85	101
1993-94	380	412	108	118	121	103	91	90	98
1994-95	329	312	95	114	145	127	92	91	99
1995-96	299	299	100	114	126	110	92	89	97
1996-97	260	260	100	107	105	98	97	95	98
1997-98	231	231	100	105	86	83	90	88	98
1998-99	162	162	100	101	78	77	87	87	100
1999-00	159	159	100	99	100	101	91	92	100
2000-01	85	85	100	102	100	99	98	97	100
2001-02	56	56	100	99	100	101	111	111	100
2002-03	56	56	100	98	100	102	121	120	100
2003-04	62	62	100	96	100	104	123	125	102
2004-05	31	31	100	90	92	102	134	135	101
2005-06	76	76	100	87	104	120	131	132	101
2006-07	65	64	100	78	94	120	123	124	101
2007-08	67	67	100	65	80	123	124	124	100
2008-09	40	40	100	59	64	110	125	124	99

Table - 3 (Contd.)

Year	DRUMSTICK			BETAL LEAVES			TAMARIND		
	AI	PI	YI	AI	PI	YI	AI	PI	YI
1975-76				263			48		
1976-77				178			52		
1977-78	73			147			53		
1978-79	74			125			58		
1979-80	71			138			57	80	140
1980-81	77			117			58		
1981-82	73			111			60		
1982-83	69	65	93	106			58	79	136
1983-84				117			58		
1984-85	64	59	93	106			58	80	137
1985-86	62	58	92	113			58	79	136
1986-87	70	64	92	125			61	100	163
1987-88	78	72	93	118			66	107	161
1988-89	83	76	92	116			69	111	160
1989-90	86	80	93	107			75	120	159
1990-91	89	87	99	109			79	124	156
1991-92	90	89	98	108			79	127	160
1992-93	90	90	100	96			77	124	160
1993-94	96	97	101	94			85	137	161
1994-95	100	101	101	99			83	124	150
1995-96	107	107	100	98			88	78	89
1996-97	103	104	101	110	111	100	97	100	103
1997-98	99	98	99	83	82	98	96	97	101
1998-99	98	97	99	89	88	99	96	98	102
1999-00	96	96	100	104	104	100	100	100	101
2000-01	98	97	99	100	100	100	101	100	100
2001-02	106	107	101	96	95	100	100	99	100
2002-03	106	107	101	98	97	100	101	100	99
2003-04	106	107	101	87	86	99	101	100	99
2004-05	110	111	101	90	89	99	103	102	99
2005-06	105	88	83	79	78	99	99	98	99
2006-07	98	86	87	62	26	41	89	89	100
2007-08	88	81	92	52	15	29	73	72	99
2008-09	85	77	91	47	13	27	68	68	101

Table - 3 (Contd.)

Year	COCOA			RAGI			OTHER CEREALS		
	AI	PI	YI	AI	PI	YI	AI	PI	YI
1975-76				303	389	128	208	194	93
1976-77				154	170	110	171	141	83
1977-78	70			94	93	99	119	153	129
1978-79	148			84	80	95	83	68	82
1979-80	235			88	84	96	109	141	129
1980-81	273			92	88	95	126	104	82
1981-82	272			90	85	95	128	106	82
1982-83	212	38	18	77	71	92	121	89	74
1983-84	210			86	80	93	123	108	88
1984-85	208	116	56	75	78	103	112	107	95
1985-86	196			74	76	102	105	104	98
1986-87	174	155	89	73	75	103	167	162	97
1987-88	163	150	92	98	121	124	189	188	99
1988-89	158	148	94	115	116	101	144	142	99
1989-90	148	135	91	122	177	144	139	139	100
1990-91	138	144	104	80	81	101	67	67	100
1991-92	116	137	119	103	103	100	89	89	100
1992-93	108	137	126	107	107	100	120	120	100
1993-94	96	135	141	98	97	100	123	124	101
1994-95	80	110	137	111	111	100	146	147	100
1995-96	91	111	121	127	127	100	145	145	100
1996-97	97	91	93	90	90	100	121	121	100
1997-98	99	97	98	148	148	100	117	118	100
1998-99	104	95	91	73	73	100	105	105	100
1999-00	100	96	96	55	55	100	84	84	100
2000-01	99	99	100	123	123	100	95	95	100
2001-02	101	105	104	122	122	100	122	122	100
2002-03	108	131	121	83	83	100	97	97	100
2003-04	110	125	114	95	95	100	56	57	100
2004-05	109	130	120	87	87	100	44	44	101
2005-06	111	138	124	26	26	100	1	1	246
2006-07	124	148	119	32	32	100	29	29	101
2007-08	167	243	145	17	17	100	16	16	101
2008-09	102	392	384	38	38	100	17	17	101

Table 4
Index of Net Area Sown and Cropping Intensity
 (Base period triennium ending 2001-02)

Sl. No	Year	Index of Net Area Sown	Index of Cropping intensity
1	1975-76	99	122
2	1976-77	99	97
3	1977-78	100	98
4	1978-79	100	96
5	1979-80	99	96
6	1980-81	99	125
7	1981-82	99	125
8	1982-83	99	123
9	1983-84	99	96
10	1984-85	99	96
11	1985-86	99	96
12	1986-87	100	96
13	1987-88	100	97
14	1988-89	100	99
15	1989-90	101	100
16	1990-91	102	99
17	1991-92	102	99
18	1992-93	102	100
19	1993-94	101	100
20	1994-95	101	100
21	1995-96	102	100
22	1996-97	103	98
23	1997-98	103	96
24	1998-99	102	95
25	1999-00	101	99
26	2000-01	100	101
27	2001-02	99	101
28	2002-03	99	100
29	2003-04	99	99
30	2004-05	97	102
31	2005-06	96	103
32	2006-07	95	102
33	2007-08	94	97
34	2008-09	33	95

144

