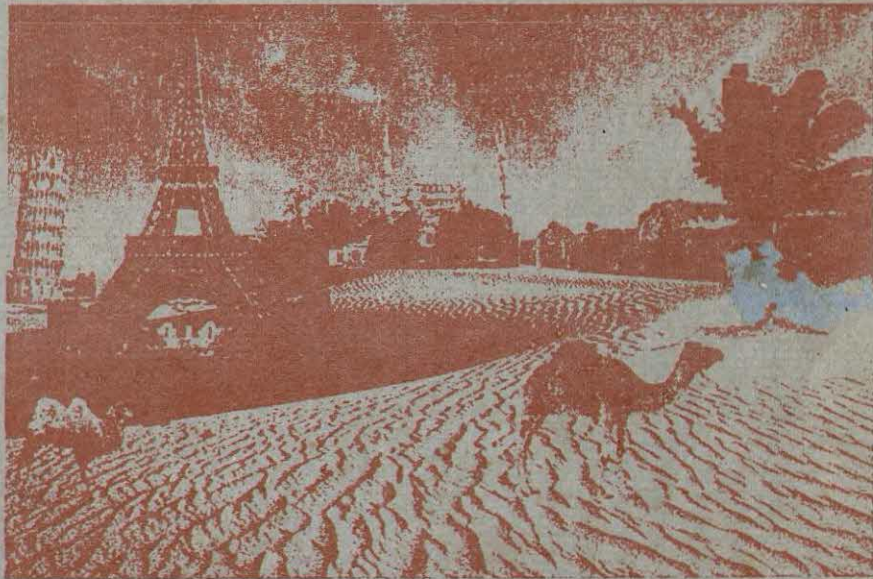




Government of Kerala

Report on
Activity status
of
Migrants and Returnees



Department of Economics & Statistics
Thiruvananthapuram
May 2003

**Report on
Activity Status of Migrants
And
Returnees**

**Department of Economics & Statistics
May 2003**



Preface

The economic and social impacts arising out of the migration were substantial. The magnitude of flow of migrants to other Countries is not fully known. The Countries received the migrants utilised their services to execute the needed infrastructure and other development programmes making way for economic growth. Kerala's share for inter-state and international migration is significant. The impact of the migration is much significant. The Surveys so far conducted by this department revealed only certain details on number of persons migrated to other countries and their remittances to homeland. Changes occurred since then is considerable. In order to have an estimation on migrants to other countries, problems faced by them etc, Government had accorded sanction for the conduct of the Survey on Activity Status and Rehabilitation of Migrants from Kerala.

The fieldwork was conducted under the direct supervision of field staff of this department under the guidance of the Deputy directors of the districts.

Without the help of officials at various levels in the district offices and the Directorate the Survey would never have been completed.

Shri.Nandasoonu of Computer Division, Sri.Gangadharan Pillai, Smt.Molykutty, Research Officers, Smt.Chandralekha, U.D.Compiler took on the extra work this exercise entailed with enthusiasm. I would like to praise them for the tremendous patience shown by them. Appreciations are also due to them. Shri.C.C.Chcrian Kunju, the then Joint Director had designed the Survey and responsible for the overall supervision. We are thankful to him. This report was prepared by Shri.P.Kochu Narayana Pillai, Joint Director. In this connection, I would like to place my record of appreciation for commendable and arduous work put in by him.

Suggestions for improvement in future studies on the subject are welcome.

Thiruvananthapuram,
30-05-2003

A.Meera Sahib
Director



Contents

Chapter	Title	Page
I	Introduction	2
II	General Characteristics of Population and Households	9
III	Dimensions of Migration	16
IV	Return emigrants and their problems	26
V	Details of Death abroad	32
VI	Summary, Conclusion and Views	36
	Appendix - Tables	40



Chapter - I

INTRODUCTION



Introduction

An Overview

- 1.1 The number of persons going abroad for employment and in search of better opportunities has shown an ever-increasing trend since Independence. The effect of this migration is felt in every aspect of the economy and the society in the State. In other words the prosperity and economic growth of the state have a correlation with the remittance from Non-Resident Keralities. During the last quarter of the 20th century, the cash remittances received by Kerala households from emigrants to gulf countries, popularly known as “Gulf Money”, has emerged as the most dynamic single factor that contributed to the economic substance of the State. In the context of continued failure on the agricultural front, stagnation in industrial growth and shortfall in employment opportunities resulting in gruesome unemployment among the educated youth, migration from Kerala has contributed more to poverty alleviation in the State than any other factor. The ~~Stories~~ stories appeared in media about migrants and their remittances give an indication of the important role played in the economy of the state by the remittances received from emigrants abroad.
- 1.2 A disturbing factor in this context, which has gained considerable attention in the administrative and political circles in recent years, is the increase in the number of emigrants who return to the State after employment abroad for several years. Their return to the Home State is prompted by various factors including the emerging situation in, and the policies adopted by, the destination countries. There is an apprehension that the number of return emigrants might increase rapidly in the coming years. In 1998 the number of return emigrants in the State was estimated as 5.43 lakhs. In appreciation of the enormous contribution to the State’s economy made by these persons and to instill a sense of confidence in those who are still working abroad, the State has to take up measures and provide necessary mechanism to rehabilitate them in the best possible way and to utilize to the maximum extent the expertise they have gained abroad.
- 1.3 For a proper understanding of the determinants and consequences of the migration and the demographic transition in the State in the last quarter of the century, a historical overview of the subject matter is considered necessary. Though Kerala has a long tradition of trade contacts with the West and the

Middle East, dating back to the period before Christ, migration of workers from Kerala is a relatively recent phenomenon. Undaunted by threats from external enemies and enjoying internal peace ensured by local Kings, the Keralaite lived a contented and happy life and seldom thought of venturing beyond the natural boundaries of the State, for earning a livelihood. Journeys beyond the Western Ghats were undertaken only by a few Keralaite, mostly scholars and Pilgrims on religious pilgrimage to holy places in the northern parts of India. Even when the British permitted indenture emigration of Indian labour to countries like Ceylon, Burma, Malaya, Mauritius, and Fiji etc. in the 19th century, Tamilians constituted the bulk of the emigrants. Keralaite generally kept away from the large-scale emigration to these countries. Even the few Keralaite who migrated to Malaya, Singapore, and Ceylon were mostly educated persons, professional traders and "non-labour" employees, whereas the emigrated Tamilians were mostly of the labour class.

Migration to Other States

- 1.4 Till the beginning of World War II Kerala was a net-in-migration State, as it attracted labour force and traders in large numbers from the neighboring area, mainly the Madras Presidency. In earlier years migration of Keralaite to other parts of India was mostly confined to persons from Malabar area, which was the part of Madras presidency and where living conditions were less favorable than in the princely States of Travancore and Cochin. Kerala's transition to a net out-migration state came about during World War II, when a large number of youth from the State were recruited for war related jobs and sent to other parts of India and even to foreign countries like Burma Malaya and Singapore. This gave them an opportunity to see life in other places. The freedom struggle, Indian Independence of 1947 and integration of the princely States with the rest of India opened up to the educated Keralaite job opportunities in other parts of the Country, like Bombay and Delhi. Expansion in the field of education compared to other Indian States and demographic explosion within the State, resulting in pressure on land and mounting unemployment among the educated youth, were other factors that gave a fillip to the migration of Keralaite to other States, especially the metropolitan cities like Madras, Bombay, Delhi and Calcutta. Since 1947 Kerala is a net out-migration State.

Emigration to Foreign Countries

- 1.5 Prior to Independence, emigration of Keralaite to foreign countries was mainly confined to Ceylon, Malaya, Burma and Singapore and these emigrants were either Malabar Muslims or those hailed from a few places like Chirayinkil, Varkala, Chengannur and Pathanamthitta in Travancore. Their number was not significant but the upward social mobility of their families as reflected in their lifestyle had a demonstration effect. These positive gains contributed to acceleration of emigration from the State to other regions of the world when opportunities emerged. Since Independence Keralaite have migrated to almost all Countries, even though in small numbers. Their presence is conspicuous in the United States and Western Europe. However, large-scale emigration to the Gulf countries began in the 1970s consequent on the oil boom in these countries and today the largest number of emigrants from Kerala is working in the Gulf Countries. According to the Housing and Employment Survey conducted during 1980, 5.1 lakhs persons from Kerala were migrated outside the state for employment and out of this 2.1 lakhs were in foreign countries.

Migration Survey 1992-93

- 1.6 Migration to foreign countries, particularly to Gulf countries, considerably influenced the Socio-economic development of the State. Hence the Department of Economics and Statistics conducted a Survey in 1992-93, with the twin objectives of estimating the number of out-migrants to foreign countries and to other States and Union Territories and the number of returnees from foreign countries. The survey, which covered 42,367 households in 14 districts, was carried out along with the house listing operation of the 49th round of National Sample Survey. The number of Keralaite migrants to Gulf Countries was estimated to be 6,41,387 and those to other foreign countries to 27,480. The survey also estimated that 1.17 lakhs persons had returned from the Gulf till the end of December 1992. The major reasons for the reverse flow were completion of the construction projects, availability of cheap labour from other countries and curtailment of wages and perquisites, apart from the Gulf war of 1990.

Present Study

- 1.7 The Survey of 92-93 was conducted covering less than 1% of the households in the State and with limited objectives. As the number of migrants from Kerala to

abroad increases rapidly, the Socio-economic conditions of the people in the State is also changing. During the last ten-fifteen years on the one hand the number of migrants is increasing and on the other hand the number of returnees is also increasing. The problems faced by the migrants in the migrant country, rehabilitation of returnees etc. have also become State's responsibility. For the formulation of proper and meaningful schemes to solve these problems, reliable and timely information is necessary. Considering these, State Government accorded sanction for conduct of the present Survey as per GO (Rt.) 382/98/plg. Dated 5-10-1998.

Objectives of the Survey

1.8 The main objectives of the Survey are –

1. To get an estimate of the demographic particulars and family status of the migrants.
2. To get a picture about the number of persons migrated and returned mainly from Gulf and other foreign countries.
3. To study the returnees' problems.
4. To assess the volume of remittances and their utilisation.
5. To compare the socio-economic condition of migrants' families with other families.
6. To study the impact of the foreign influence on the States' economy and the Standard of living of the people as a whole.

1.9 The following methodology was adopted for the study.

The Survey covered all the 14 districts in the State. A multistage sampling technique was adopted for the survey. The first stage unit (stratum) was block panchayaths in rural areas and Municipalities / Corporations in urban areas. In the first Stage 10% of Panchayat/Municipal/corporation wards were selected through circular systematic sampling. From each selected ward 20% households

(primary unit) were selected for detailed Survey. Households were selected as clusters of 20 houses, starting from a house selected using systematic sampling.

Organisation of the field work

1.10 In order to carry out the fieldwork 600 enumerators were recruited for 30 days from the unemployed graduates and post-graduates. In each district a committee was constituted comprising of the Deputy Director (Economics & Statistics), Employment Officer and a representative from the Directorate of Economics and Statistics. The committee made the selection of enumerators by giving publicity through local newspaper media utilising the services of District Information Center.

Training

1.11 Two levels of training were arranged. In the first stage district level officers were given centralized training at Thiruvananthapuram. The field enumerators were given training in each district-by-district level officers. Senior officers of the Directorate were given overall charge of 2 or 3 districts for training, field inspection etc.

Supervision

1.12 The departmental officers in various cadres were entrusted with the supervision in addition to their normal duty.

Schedules

1.13 A schedule with 4 parts was designed for listing, detailed enquiry etc. of all families in the selected cluster of households.

1.14 First part of the schedule dealt with general features of families of selected cluster of households, details of family members, educational status, employment status, and residential status, along with means of livelihood.

1.15 Second part of the schedule dealt with the overall details of employed migrants along with the family members who were staying with them abroad.

1.16 Third part of the schedule dealt with overall details of returnees from abroad.

Fourth part of the schedule dealt with the details of persons died abroad during the period of employment.

Field work

The field work was carried out during 1999 and a quick report released in 2000.

1.17 The Survey results were processed in the computer division of the Department in the Districts and the Directorate. The results were presented in the following chapters.

Chapter	- 2	-	Characteristics of population and households.
Chapter	- 3	-	Dimensions of migration
Chapter	- 4	-	Return emigrants and their problems
Chapter	- 5	-	Details of Death Abroad.
Chapter	- 6	-	Summary of conclusions and views

Chapter – II

GENERAL CHARACTERISTICS OF POPULATION AND HOUSEHOLDS



General Characteristics of population and households.

- 2.1 The Survey covered 1.29 lakhs households in the State, which is more than 2 percent of the total households. The sample size is considered quite sufficient for reliable estimates. The number of sample households surveyed in each districts are given in table 1.1.
- 2.2 The percentage of households in the sample from each religion shows that the sample covered more or less proportionate representation of all religions. The number and percentage of households from each religion in the sample is also given in table 1.1. The Social group wise distribution of samples is given in table 1.2, which also shows that there is proportionate representation for all the categories viz. SC, ST, OBC & Others in the survey. Thus the sample, on the whole, represents a proper cross section of the population of the State.
- 2.3 The total number of households in the state is estimated as 65.70 lakhs. Among the districts, Trivandrum district has maximum number of households i.e. 7.85 lakhs households followed by Eranakulam district with 6.49 lakhs households. Wayanad district has the least number of households with 1.57 lakhs followed by Kasargod district with 2.13 lakhs households.
- 2.4 Population (usual resident) in the State is estimated as 314.67 lakhs. Malappuram district stood first with 34.70 lakh people and Wayanad district has the last position with 7.34 lakhs.
- 2.5 The survey results shows that the average family size is 4.79 for the state. Among the Districts the average family size is maximum in Malappuram with 5.85 followed by Kannur (5.40). The average size is least in Thiruvananthapuram with 4.28. The District-wise no of households, population and average size are given in table below.

COMPARISON OF HOUSEHOLDS, FAMILY MEMBERS AND AVERAGE SIZE

<i>District</i>	<i>No. Of households (in lakhs)</i>	<i>Total family members (in lakhs)</i>	<i>Average Size</i>
Thiruvananthapuram	7.85	33.60	4.28
Kollam	5.81	25.80	4.44
Pathanamthitta	2.95	13.05	4.42
Alappuzha	4.65	21.33	4.59
Kottayam	4.22	19.48	4.62
Idukki	2.86	12.64	4.42
Eranakulam	6.49	29.49	4.54
Thrissur	6.20	29.86	4.82
Palakkad	5.32	26.16	4.92
Malappuram	5.93	34.70	5.85
Kozhikode	5.27	26.62	5.05
Wayanad	1.57	7.34	4.68
Kannur	4.45	24.02	5.40
Kasaragod	2.13	10.60	4.98
Total	65.70	314.67	4.79

2.6 It is already stated that one of the objectives is to have an idea about the comparative picture on the socio-economic condition of migrant families with other families. As the survey was conducted in the house holds then in the state, the households are classified in four groups namely households with migrant, households with returnees, households with both migrant and returnees, other households. It is stated that there are 65.70 lakhs households in the state with a population of 314.67 lakhs persons. There are considerable number of Keralites residing out side the state but with in the country. The number of Keralites staying out side India (migrants) is 13.84 lakhs. Out of this 13.84 lakhs migrants 11.40 lakhs are employed in different countries and the remaining 2.44 lakhs are their dependents(job seekers and dependents) in the migrant countries. These 13.84 lakhs migrants are not included in the category of usual resident i.e. the population of the state (314.67) given above. Among the population of 314.67 lakhs there are 5.43 lakhs returnees i.e., those who were abroad and at present staying in homeland. Table 2.3 and table 2.4 given in Appendix show the district wise number of migrants and residents and the % of migrants to resident, etc. The details of migrants & its dimensions are given in chapter 3 and that of Returnees in Chapter 4.

2.7 The survey result shows that the average family size is 4.79 in the State. Table 2.1 gives the number of households according to the family size and its % given in Table 2.5. It shows that there are single member families as well as families with above 10 members in all the Districts. The maximum % of single member family is

in Palakkad with 3.32. The maximum % of families with more than 10 members is in Malappuram with 6.42.

- 2.8 The survey result shows that there are 314.67 lakhs person in the state. The age wise sex wise number of persons in each District is given in table 2.2 and its % in table 2.6. The age wise distribution shows that 34.24% of the population in the age group less than 15 or more than 60. It means that about 2/3rd are in the labour force and 1/3rd are dependents. As regards the sex ratio it is seen that up to the age 14 the males out numbered females and all the age group 15 and above the females is more than that of males. The sex ratio in the age group of 60 and above is 1148 as against 1054 for all ages.
- 2.9 It is generally accepted that the literacy level of Kerala is high. An estimate was made about the literacy level of the population excluding the kids below 6 years. It is seen that 6.87% are illiterate and more than 5% are graduates including postgraduates. The District wise % of persons according to Education status is given in table 2.7. The % of illiterate is maximum in Wayanad with 12.76 followed by Palakkad with 12.16. The % of illiterate is minimum in Kottayam with 2.12 followed by Pathanamthitta (2.43). As regards graduation and above Thiruvananthapuram stood 1st followed by Kottayam.
- 2.10 The unemployment in Kerala is grave problem especially educated unemployment. An attempt was made to have an idea about the employment status of the persons.

Employment Status

Employment Status	No. (lakhs)	%
Permanent Employment	40.90	13.00
Temporary Employment	58.69	18.65
Unemployed	215.08	68.35
Total	314.67	100.00
Employed abroad	11.40	3.51

- 2.11 Out of the total population 40.90 lakhs (13%) are employed permanently i.e. employed more or less in regular basis and with certain contractual conditions. Out of the 40.90 lakhs, 10.37 lakhs are employed in Government or quasi government sector. There are 11.40 lakhs persons employed abroad and the details are given in Chapter 3. The district wise sector wise number of persons permanently employed and their % age are given in table 2.8 and 2.9.

Permanent employment

Sector	No. (lakhs)	%
Government or quasi government	10.37	25.35
Co-operative	0.84	2.05
Private	9.47	23.16
Self	9.95	24.33
Others	10.27	25.11
Total	40.90	100.00

2.12 The survey results shows that 58.69 lakhs (18.65%) people are engaged in various types of temporary employment. They are employed in Government/Quasi Government Sector, Co-operative, private, self-employment and other sectors. The persons engaged in various sectors and not having preferential sector are included as engaged in other sectors. The table 2.10 and 2.11 gives the number and percentage of people engaged in each sector.

2.13 It is seen that 68.35% of the population in the State are unemployed. The unemployed persons are classified in 8 groups as below. Out of the unemployed youth only 12.67% are job seekers while 13.78% did not need any job. The number and percentage distribution of unemployed persons in each District is given in table 2.12 & 2.13.

Status of Unemployed persons

Status	No. Of persons (lakhs)	%
1 Job seekers	27.25	12.67
2 Students	70.19	32.64
3 Service Pensioners	2.96	1.38
4 Other Pensioners	1.87	0.87
5 Job not needed	29.64	13.78
6 Disabled	6.85	3.18
7 Age < 15 and > 60	49.24	22.89
8 Others	27.07	12.59
Total	215.07	100.00

2.14. The household in the state is classified as households with migrants, returnees, returnees & migrants and other type of households. In the other type of households there is no migrants or returnees. In the State 11.99% of households have migrants, 6.07% have returnees, 1.57% with both migrant and returnees leaving 80.37% without migrants or returnees. The district wise percentage of households in each group is given in table 2.14. The results shows that the percentage of households in migrants, returnees, and migrants and returnees groups were maximum in Malappuram and minimum in Idukki district.

- 2.15. The different group of households (households with both migrant and Returnees, Migrants, Returnees, other house holds) were analysed separately about the extent of land possessed, age of the house owned, domestic facilities, monthly per capita expenditure, capital investment made during the last 5 years, etc.
- 2.16. The result shows that 4.71% of the households in the state are land less and 5.82% without own house. As regards the extent of land owned by the households it is seen that 69.95% of the households have land less than 50 cents. Only 1.40% of households possess land 5 acres and above. It is also seen that the extent of land possessed by households with migrant and returnees is slightly more than all other type. As regards the ownership of land, it is seen that the households with migrant or Returnees or both were in a better level than that of other type of households. In earlier days, persons belonging to households with middle class or upper middle class were migrated. Hence the above phenomena cannot be an impact of migration alone. But migration also contributed to the increase in extent of land possessed. The percentage of extent of land owned by each type of house holds is given in table 2.15.
- 2.17. In the State 94.18% of households are having own house. As regards the age of house, it is seen that 26.84% of the house are constructed long back i.e. above 20 years and 9.08% with in last 2 years. On examining the house constructed with in the 2 years it is seen that the migrant families constructed 9.24% as against the state percentage of 9.08. Other type of households (house holds without migrant or returnees) the percentage of house holds constructed houses with in two years is 9.19 which means that every stratum of people are constructing new houses more or less in the same rate. The hose owned by families with migrant and returnees are having comparatively more aged houses than houses owned by other type of families. The age wise percentage of houses owned by each type of families is given in table 2.16. There is no specific inference that the migrants and returnees families have constructed large number of houses compared with other stratum of households.
- 2.18. The table 2.17 & 2.18 gives an idea about the domestic facilities used by the households in general and also according to the household's status. The house holds with migrants and returnees together had more house hold amenities, except cycle, compared to other type of households. Iron box tape recorder etc were used by more then 50% of the households. 461 households out of 1000 house holds are subscribers of news paper. On examination of different type of families, the other type of families are more in the usage of black and white TV & Cycle.

It is seen that household' amenities are used more by the migrant or migrant and returnees families in all most all the District and it is an impact of migration.

- 2.19. An attempt was made to estimate the district wise per capita expenditure and per capita expenditure by various types of households. It is seen that the per capita expenditure is Rs.519.12. Among districts the per capita expenditure is maximum in Kottayam with Rs.619.8 followed by Thiruvananthapuram with Rs.594.42. The lowest per capita expenditure is reported in Malappuram with Rs.431.01 followed by Idukki with Rs. 437.82. The district wise per capita expenditure on food, clothing, etc. are given in table 2.19.
- 2.20. The survey results shows that the average family size (residents) is 4.79 for the state. It is seen that the average family size of households with migrants and returnees is 7.01, which is very high compared to other groups. As regards the per capita expenditure of various types of households the expenditure is maximum for the households with migrants followed by with migrant and returnees. The per capita expenditure for migrant family is Rs.650.44 while the other type of family is Rs.496.65. It is very clear that the expenditure on house holds having present earning from abroad is more than all other households. The expenditure on various items according to different type of households is given in table 2.20.
- 2.21. An attempt was made to estimate the number of households that made various capital investments during the past five years. The survey focused the capital investment made by different type of household during the past five years. The capital investment made by utilizing savings from different source cannot be separated due to the lack of full-fledged information. It is seen that most of households made various type of investment like land, buildings, commercial vehicles, business, etc. As regards the quantum of money invested by households it is seen that 78.4% invested Rs.25000/- or less and only 11% invested more than 5 lakhs. As regards the capital investment, proportion of persons invested in the range 25001 to 50000, the families with migrants or returnees or both are significantly high. The distribution of households invested in various range are given in a table 2.21.

Chapter - III

**Dimensions of
Migration**



Dimensions of Migration

- 3.1 The survey revealed that 13.84 lakhs Keralites are staying outside India. It is more than 4.4% of the people permanently residing in the state. Out of the total 13.84 lakhs persons residing abroad . 11.40 lakhs are employed and the remaining 2.44 lakhs are their dependents. The country -wise migrants, employed migrants, Dist. wise employed migrants, sex-wise distribution of migrants etc are presented in tables 3.1a,3.1b,3.1c and 3.1d..
- 3.2 The numbers of migrant employees is the highest in U A E with 4.09 lakhs followed by Saudi Arabia with 4.08 lakhs. UAE and Saudi Arabia together constituted more than 75% of the migrants. The number of migrant employees are least in Australia with 957 followed by U.K with 2619. The country-wise Dist-wise no of migrants are given table 3.2.
- 3.3 As regards the marital status of migrants more than 70% are married and 28% are unmarried leaving the remaining to the categories of widower/ widow, divorced or separated. The age-wise sex-wise marital status of migrants are presented in table 3.3 a,b,&c.

Marital Status of migrants

Marital Status	Employed			Dependents			Total		
	Male	Female	Total	Male	Female	Total	Male	Female	Total
Married	820333	58978	879311	23785	71598	95383	844118	130576	974694
Un-married	239723	13062	252785	75886	63610	39496	315609	76672	392281
Widower	1628	0	1628	497	0	497	2125	0	2125
Widow	0	1724	1724	0	3273	3273	0	4997	4997
Divorced	2088	1074	3162	1085	2528	3613	3173	3602	6775
Separated	561	963	1524	474	728	1202	1035	1691	2726
Total	1064333	75801	140134	01727	141737	43464	166060	217538	383598

- 3.4 Out of the total migrants 15.72% i.e. 2.18 lakhs are females. The percentage of females to the total persons in the age group less than 20 years and above 60 years is respectively 47.6 and 39.33. It shows that the representation of females in the workforce is very low compared to the dependent group.
- 3.5 The country wise distribution of employed migrant shows that the maximum is in UAE followed by Saudi Arabia but the percentage distribution of females shows that the maximum is in Soudi Arabia..
- 3.6 Out of 13.84 lakhs migrants' 11.40 lakhs are employed. The education (general and technical) status, nature of Job, sector in which employed, and type of employer, are classified and analyzed the tables 3.4 to 3.8.b. It is seen that 80.83% of the employed migrants have no technical qualification.

Qualification of Employed Migrants

Qualification	No	Percentage
Non Technical	921559	80.83
Certificate	124226	10.90
Diploma/Equivalent	56634	4.97
Engineering	19985	1.74
Medical	6278	0.55
Other Technician	6921	0.61
Others (not specified)	4531	0.40
Total	1140134	100.00

3.7 There are 11.40 lakhs employed migrants of whom 4.09 lakhs are in U.A.E and 4.08 lakhs are in Saudi Arabia. The numbers of persons employed in various categories are as follows. About two lakhs persons have not specified the type of job. In various categories of job about 20% are in the worker category followed by salesmen with 15%. The non-teaching staff and teaching staff in educational institutions are the least with 3302 and 6746 respectively. It is also seen that all the migrants to Australia are in professional or executive category. The country wise job wise number of migrants are given in table 3.6 a&b.

Analysis of migrants according to job categories

Sl.No.	Profession/Job categories	No of persons	Percentage
1	Doctor	12527	1.10
2	Nurse	55939	4.91
3	Pharmacist	32373	2.84
4	Paramedical	7535	0.66
5	Engineer	20554	1.80
6	Technical expert	70687	6.20
7	Manager	14340	1.26
8	Supervisor	28839	2.53
9	Technicians in refinery oil	12499	1.10
10	Worker	226642	19.88
11	Proprietor	16941	1.48
12	Salesman	172597	15.14
13	Teacher	6746	0.59
14	Non teaching staff	3302	0.29
15	Office works	76494	6.71
16	Cook/Chef	22957	2.01
17	Hotel Boy	26932	2.36
18	Gardener	15247	1.34
19	Driver	88036	7.72
20	Domestic Servant	28205	2.47
21	Others	200742	17.61
	Total	1140134	100.00

3.8 The migrants are employed in various institutions under different sectors like Agriculture, Education, Industry, Trade and Commerce, Health, Construction, Hotel & Restaurant, Service Sector, Mining & Oil refinery & others. The number of persons employed in each category and their percentage are given below.

Out of the total employees 28.57% are reported in the category "others". This is mainly due to lack of proper information of the informants. As regards specified categories, the maximum number is in the field of Industry followed by Trade and Commerce with 21.05% and 18.11% respectively. The number of migrants employed in agriculture Sector is only 2.25%. The district wise number of migrants employed in each type of institution and their percentage are given in table 3.7a&b

Analysis according to sectors of employment.

Category	No of Employees	Percentage
Agriculture	25670	2.25
Education	19022	1.67
Industry	239978	21.05
Commerce	206473	18.11
Health	49306	4.32
Construction	117235	10.28
Hotel & Restaurant	68937	6.05
Service	75119	6.59
Oil Mining	12609	1.11
Others	325786	28.57
Total	1140134	100.00

3.9 As regards the status of employer i.e. Government, Semi-Government and Private it is seen that 91.34% are employed in private sector. The number of employees in each sector is as follows. The country wise, gender wise details of employees under different type of employer are presented in table 3.8 a & b.

Sector-wise analysis of employed migrants.

Sector	No. Of Employees			Percentage		
	Male	Female	Total	Male	Female	Total
Government	54931	15784	70715	5.16	20.70	6.20
Semi-Govt.	25160	2889	28049	2.36	3.79	2.46
Private	983778	57592	1041370	92.48	75.51	91.34
Total	1063869	76265	1140134	100.00	100.00	100.00

3.10 An attempt was also made to analyse the reasons for migration. The migrants left the country for various reasons like employment, better employment seeking for employment, educational purpose, to join family etc. The reason for migration at the time of leaving the country is taken as the criterion. 75.18% of them have migrated for employment i.e. they have gone with employment visa. Only 0.67% has gone to join family and had got employed subsequently. 20.93% were already employed in the homeland before migration. 0.22% of the migrants left the country initially for educational purpose and then joined employment there. The district wise number of employees migrated due to various reasons and their percentage are given in table 3.9 a&b

Percentage distribution according to reason for migration.

Reason	No. Of.migrants	Percentage
Employment	856947	75.16
Better Employment	238592	20.93
Seeking Employment	6758	0.59
Education	2536	0.22
Join Family	7637	0.67
Others	27664	2.43
Total	1140134	100.00

3.11 The period of stay of migrant employees varies vastly. There are migrants who were employed abroad for more than 20 years and also those of period less than one year. More than two thirds of the migrants are staying in the present country for periods ranging from one to five years. The district wise migrants according to the period of stay (No and Percentage) are given in table 3.10 a&b.

Number of employed migrants according to period of stay in the present country.

Period of stay	No	Percentage
Up to 1-Year	143091	12.84
1 to 5 Years	480981	42.12
5 to 10 Years	285007	24.96
10 to 20 Years	185836	16.31
Above 20 Years	45220	3.97
Total	1140134	100.00

3.12 In some cases it is seen that the migrants have shifted from country to country by renewing the visa. It is seen that out of the 143,091 employed migrants working in the present country for less than one year, 56,253 persons have worked or stayed abroad for more than one year. The table below gives the total period stayed

abroad by the migrants (total stay in various countries). The district wise migrants according to the period of stay abroad (No and Percentage) are given in table 3.11 a&b.

Number of migrants according to period of stay abroad

Period stayed	No	Percentage
Up to 1 Year	86838	7.62
1 to 5 Year	485296	42.56
5 to 10 Years	307965	27.01
10 to 20 Years	208245	18.26
Above 20 Years	51790	4.55
Total	1140144	100.00

- 3.13 An enquiry was made about the utilization of income earned through employment in migrant country. As the data was collected mostly from the family members at home, there is some under estimation as there was some reluctance to reveal full information. However it is seen that about 90% of the persons reported about the utilization. The different purposes are purchase of land, construction of buildings, purchase of land and building, purchase of commercial vehicles, investment in share market, expenses for marriage, expenses on treatment, etc. About 1/3rd of the income was utilized for unspecified purposes and among the specified purposes the maximum investment is in for construction/purchase of residential building followed by purchase of land. There are persons who utilized the money for more than one purpose. The persons who have not reported included persons who have not informed the details of utilization to the household or who have not invested at all. It is also seen that a considerable amount was utilized for treatment, marriage, education etc. On the whole, the major portion of the earnings was invested in land and buildings. Another sizeable portion of earning was spent on routine household expenditure. The distribution of utilization of money for different purposes is given in table 3.12. As regards the investment in land it is seen that 17.87% of employed migrants purchased land. The extent of land purchased by the migrants, it is seen that more than 75% have purchased less than 50 cents. Only 1.75% have purchased above 5 acres. The percentage of households who have purchased 5 acres and above is maximum in Kottayam

District with 6.02 and minimum in Kozhikode with 0.53. The district wise distribution of land purchased according to the extent is presented in table 3.13.

The District wise percentage of migrants purchased land

District	Purchased land
Kasargod	11.94
Kannur	14.47
Wayanad	28.33
Kozhikode	17.43
Malappuram	16.18
Palakkad	17.99
Thrissur	16.31
Ernakulam	17.46
Idukki	14.80
Kottayam	14.92
Alappuzha	18.65
Pathanamthitta	22.33
Kollam	20.43
Thiruvananthapuram	23.89
Total	17.87

- 3.14 The migrants send the money (earnings) to the home through bank, friends, or as gold etc. It is seen that about 3/4th of the amount received in the homeland is through bank. On examining the district wise distribution of the receipt of earnings by different ways it is seen that 894 persons out of 1000 are utilizing the bank facility in Thrissur while in Malappuram only 561 out of 1000 is sending money through bank. In Kasaragod District 265 persons out of 1000 are forwarded their money through friends. In Malappuram 127 persons out 1000 are sending the earnings through other ways. The distribution of persons who sends money to homeland by different modes is given in tables 3.14 & 3.15.
- 3.15 The percentage of literacy in the State is very high and most of our youth prefer to have permanent and secured employment. It is generally seen that in our State there is shortage in manpower in manual labour in agriculture, construction, etc. It is a usual practice that workers from outside the state are doing manual labour. But from the data available it is seen that there are Keralites outside India as worker. It is clear that though the Keralite is hesitate to do manual labour in the homeland they are prepared to do such type of work abroad. It may be due to the higher pay or some other reasons. Considering the higher demand for employment abroad, there are a number of agencies in the state for assisting in getting visa, job etc. An attempt was made to collect details about expense for getting visa, agency provided visa, benefits offered and received etc. As regards

this information there are situations in which the household members in the homeland is not fully aware of all the facts. The analysis is made based on the details furnished by the household members available in the homeland. It is seen that 36.97% of the migrants received their job through agents. The number of migrants received their job through various sources are given below.

Analysis of sources provided assistance in getting visa.

Source	No of migrants received jobs	Percentage
Self	373728	32.78
Agency	421552	36.97
Government	21477	1.88
Others	323377	28.37
Total	1140134	100

3.16 The district wise number of persons received job through different agencies, with the percentage are given in table.3.16a&b. There are citations were the persons are taken more than one visa. In the state 769 Persons out of 1000 employed migrants have taken one visa. On the other hand 11 out of 1000 persons have taken more than 5 visas. The country wise distribution shows that 31 out 1000 persons working in Singapore/Malaysia have taken more than 5 visas while in U.K. and Australia there is none in the category. The country wise details are given in table.3.17.

3.17 It is an accepted fact that there is an expense for securing visa and for the completion of other formalities. The amount paid to get visa to different countries and for different job is varying. An attempt was made to have an idea about the amount paid by the employed migrants for getting the present visa. It is seen that 23.34% of the persons have given only 10,000 or less for visa and 21.48% paid above Rs.50000. The percentage in all other range is less. Hence it is clear that there is vast difference between the amounts paid by persons. The country wise distribution of amount paid for visa is presented in table3.18 a .

Distribution of persons according to amount paid for visa.

Range of Amount Paid for Visa	No of persons	Percentage
Up to 10000	266066	23.34
10001-20000	103349	9.06
20001-30000	156735	13.75
30001-40000	157968	13.85
40001-50000	211138	18.52
Above 50000	244878	21.48
Total	1140134	100.00

3.18 There is a general view that it will take a long time to get visa. But in the survey it is seen that in more than half of the cases they obtained the visa within one month. Only 1.5% of the cases took more than one year to get the visa. The country wise distribution of time taken to get present visa and their percentage are given in tables 3.19a & b.

Distribution of time taken to obtain visa.

Time taken	No	Percentage
Below 1 month	592383	51.96
1 to 3 months	334415	29.33
3 to 6 months	136731	11.99
6 to 12 months	59170	5.19
Above one year	17435	1.53
Total	1140134	100.00

3.19 An attempt was made to get an idea about the specific problems faced in getting the visa. It is seen that 3.16% of the cases reported that there is no delay in getting visa and 34.28% reported that they are not aware whether there is delay or not. More than 60% of the household informed that there is delay but they are not aware to specify the reason for the delay. The country wise distribution of the persons faced various problems in getting the visa, and their percentage distribution is given in tables 3.20 a & b.

3.20 It is generally heard that the job, salary and other benefits offered in the visa are not received after entering into the job. An attempt was made to collect details on the number of cases that received the job, salary etc as per the visa. The country wise, qualification wise and job wise number of persons received the benefits are presented in table 3.21 a, b & c.

The number of persons received the benefits as per the agreement in visa

Benefits	No of persons	Percentage
Job as per Visa	973686	85.39
Salary as per Visa	802566	70.38
Other benefits	305920	26.83
Provision for family Accommodation	136009	11.93

3.21 The Government had initiated various steps for the benefit of migrant employees and foreign returnees. An insurance scheme has started by the state government for the migrant. An attempt was made to understand the awareness of the scheme and the number of persons joined in various schemes introduced by Government.

It is seen that only 4.84% of the migrants joined in various Insurance Schemes. As regards the opinion about the scheme 5% informed that the scheme is not attractive and 2.7% reported that the premium rate is very high. Majority i.e. 84.2% reported that they have not joined due to various reasons. It is clear that there is no specific awareness about the scheme to majority of the migrant households. On enquiry about the sources from which the migrants who joined the Government insurance scheme received the application and other details, it is reported that 11.46% received the application through NORKA Department. It is also seen that 28.64% of applications were received from various Kerala Associations in migrant countries 19.12% through New India Insurance and 40.79% from other source. On analyzing the opinion given by the migrants there is a strong demand for proper publicity and to create awareness of the scheme, minimize the premium amount and to include the dependents also in the scheme etc. Tables 3.22 a, b, c, d & e in appendix gives the district wise details of above items.

- 3.22 As regards the medical care given by the employers it is seen that the employers provide medical help for disease and for accidents to certain extent. It is seen that 37.46% of the persons who suffered from diseases received help from the employer and in 52.96% of the cases of accident the employer provided medical help. It is seen that about 25 out of 1000 persons were affected from diseases and 15 out of 1000 met with various accidents during the time of the foreign stay. (Table 3.23).

Chapter - IV

RETURN EMIGRANTS AND THEIR PROBLEMS

Return emigrants and their problems.

- 4.1 Before independence, the Indians especially Keralites migrated abroad mainly for better job and most of them are educated. Later the number of persons migrated increased and also engaged abroad for various types of jobs including manual job. The rate of migration increased after 1970 and majority are in gulf countries. The job opportunities in those countries are attractive to Keralaite considering wage rate at that time. Apart from India people from many countries migrated to gulf countries and as a result there was also competition for certain type of job to certain extent.
- 4.2 In earlier period the persons gone to different foreign countries are stayed there for long. But for the last two-decade it is seen that the people are going abroad for employment and also a sizable number of persons in abroad are returning to homeland. It is seen that there are 5.43 lakhs returnees in the homeland during 1999. The maximum number of returnees i.e. 90688 is in Malappuram followed by Kollam. On analysis about the reason for return to homeland 16.8% are sent back. It is seen that about 45% of the persons return to homeland due to the reasons like no security to life, retrenchment or sent back. That is they returned not for seeking any better avenue. The reasons may be the war, lack of employment opportunity or termination of contract etc. The district wise and country wise distribution of number of persons returned from abroad are given in tables 4.1 & 4.2.

No. Of returnees with reason for return.

Reason of Return to Homeland	No	Percentage
Retirement	23517	4.33
No life Security	72011	13.25
Retrenchment	81208	14.94
Sent back	91240	16.80
Ill health	88577	16.31
Education of Children	10934	2.01
Re migration for better job	38425	7.07
Bad climate	11331	2.08
To join duty in homeland	11190	2.06
Other reason	114809	21.15
Total	543242	100.00

- 4.3 The country wise number of returnees shows that Saudi Arabia stood first followed by U.A.E. As regards the age group of returnees (including dependent in migrant country) About two third of the returnees are in the age group less than

49. The country wise and district wise number of returnees in each Age group is presented in table 4.3 and 4.4 respectively.

Age wise distribution of returnees

Age group	No	Percentage
0-19	1321	00.24
20-29	75727	13.94
30-39	197396	36.34
40-49	167888	30.91
50-59	70854	13.04
60-69	24282	04.47
70-79	4844	00.89
80-	930	00.17
Total	543242	100.00

- 4.4 As vast majority of the returnees are in the age group less than 49, it is seen that they are in need of some employment or economic activity. As a result majority of the returnees added to the unemployed group of the population with in the state. The problems faced by the returnees are more crucial than the problems faced by the unemployed youth or under employed person in the state. On examination of the present activity statues of returnees it is seen that 65.03% are employed after return to the homeland and 34.97% are not engaged in any economic activity. The district wise percentage of employed returnees is given in table.4.5.
- 4.5 Analysis of the sector wise present employment of returnees it is seen that the maximum percentage are engaged in self-employment in Agricultural and other sector. The various sectors are Government/Quasi Government, Co-operative, Other organized, Self-employed, Political and social organization, Agriculture and other sectors. The District wise per1000 distribution of sector wise present employment statues are given in table.4.6.

The sector wise percentage of employment

Sector	Percentage
Government /Semi Government	03.10
Co-Operation	00.90
Other organized	17.90
Self employed in Non Agriculture	31.20
Political and social Activity	00.50
Other Activities	46.40
Total	100.00

- 4.6 It is seen that only very few have returned with proper retirement benefits. On analysis of the benefit received at the time of retirement or retrenchment it is seen that only 19.96% got the benefits and 80.04% reported that they did not get any benefit. The dist-wise percentage are given in table 4.7
- 4.7 As regards the period taken to get the benefit the survey result shows that majority ie 54.02% received the benefit with in one month and only 3.46% after one year. The district wise percentage distribution of period taken to get benefits are given in table.4.8

Percentage Distribution of period taken to get benefits

Period taken	Percentage
Up to one month	54.02
1-2	9.76
2-3	8.35
3-6	14.33
6-12	10.08
Above 12 months	3.46
Total	100.00

- 4.8 With regards to other benefits like TR, it is seen that 32.26% got the benefit. The district wise percentage is presented in table.4.9.
- 4.9 There is a usual feeling that there is much difficulty at the time of customs clearance. But the survey results show that 91.13% of the returnees reported that they have not faced much difficulty in customs clearance at the time of return. 8.77% reported that they have faced difficulty. Out of which also more than 50% has not stated the type of difficulty. The district wise distribution of percentage of item wise difficulty reported by persons who faced difficulty is given in table 4.10.

Difficulties faced at the time of customs clearance.

Type	Percentage
1. Imposed high Excise Duty	16.48
2. Delayed	3.26
3. Loss and damage made	4.27
4. Bros paid	10.89
5. Toughen from customs	3.56
6. Un specified	61.54
Total	100.00

- 4.10 There is a view that the Kerala Economy is controlled or depends upon Gulf money .An attempt was made in the survey to get an idea about the earnings made by the returned migrants while they were abroad. It is seen that 88.20% of them send money to homeland while abroad. As regards the district wise analysis

of no of persons sent money, Pathanamthitta stood first with 95.14% and Kasargode the lowest percentage i.e. 69.69. The district wise percentage of returnees sends money to homeland while abroad is given in table.4.11

- 4.11 The earnings were sent to homeland by way of money through bank, as gold, through friends and others as other items etc. The survey result shows that more than 80% have sent their earnings through bank and only 1.89% forward as Gold. The District wise Percentage given in table 4.12.

The District wise method of transfer of way/money sent to homeland.

Method	Percentage
Bank	80.43
Friends	13.36
Gold	1.89
Other items/method	4.33
Total	100.00

- 4.12 It is seen that the services of bank is used maximum by the migrants from Alappuzha District (94.29%) and minimum by Kasargode District (63.92%). The money was send through friends by the migrants of all the districts but the maximum i.e. 30.02% were from Kasaragod district. Kottayam utilized this facility the least (2.53%). In Kannur 4.37% of people sent Gold while from Idukki there was no case reported in the category. In Malappuram District it is seen that 12.90% send their earning as items other than Gold and the corresponding percentage is lowest in Alappuzha with 0.59%
- 4.13 As regards savings at the period of stay abroad, 68.75% reported that they have savings. The country wise percentage of persons having earnings was presented in table 4.13.
- 4.14 On enquiry about the investment of the earnings it is seen that purchase of land, purchase or constitution of residential buildings, commercial buildings, industry and commerce, etc are prominent. There was considerable expenditure also on marriage, education, employment, medical treatment etc.

Analysis of item wise investment

Item	Percentage of Investment
1. Purchase of land	24.7
2. Construction and Purchase of Residential buildings	29.1
3. Commercial Vehicle/ Bldgs	4.9
4. Trade and Commerce	4.4
5. Other Deposit	9.1
6. Marriage	17.2
7. Education	8.5
8. Treatment	14.3
9. Other Expense	60.8

The district wise break up is given in table 4.14

- 4.15 It is seen that 24.7% of the investment, made by the migrants are for purchase of land. As regards the extent of land purchased by these people about $\frac{3}{4}$ th have purchased 50 cents or less. The district distribution of migrants purchased land according to the extent is given in table 4.15.

The percentage of persons purchased land in each extent is given below.

Extent of land	Percentage
<10 Cents	24.97
10 to 50 Cents	48.51
50 to 100 Cents	12.85
100 to 200 Cents	8.02
200 to 500 Cents	4.18
500 and above	1.47

- 4.16 It is presumed that since the extent is less most of the land purchased is for residential purpose and not for agricultural purpose.
- 4.17 It is true that these persons migrated for getting better earnings. But on enquiry about the help or assistance expected from Government, % of the returnees reported that they are expecting financial help for starting some business. The district wise break up is given in table 4.16. Appended

The percentage of returnees expecting various types of helps is given below.

Type of help or assistance	Percentage
Financial	62.7
Technical	7.6
Information/ Training	7.5
Marketing/ Export/ import license	2.2
Electricity	3.0
Others	10.9

Chapter – V
DETAILS OF DEATH ABROAD

Details of Death Abroad

5.1 Attempt was made to estimate the number of persons died while abroad. The information was gathered from the households of homeland from the parents/wife/husband or near relation of deceased. It is seen that 7333 persons were died while in foreign country. The district wise figures are as follows.

No of persons died while abroad

District	No	%
Kasaragod	249	3.40
Kannur	624	8.51
Kozhikode	542	7.39
Malappuram	972	13.25
Palakkad	198	2.70
Thrissur	1099	14.99
Eranakulam	263	3.59
Idukki	98	1.34
Kottayam	411	5.60
Alappuzha	505	6.89
Pathanamthitta	337	4.60
Kollam	729	9.94
Thiruvananthapuram	1306	17.8
Total	7333	100.00

5.2 Out of the 7333 deaths it is seen that 6834 are males and 499 are females. As regards the age wise distribution it is seen that maximum casualties are in the age group 30 to 39.

The number of deaths according to each age group is as follows

Age group	No	%
0-19	102	1.43
20-29	1423	19.41
30-39	2807	38.28
40-49	1929	26.31
50-59	866	11.81
60 and above	203	2.76
Total	7333	100.00

The occupation of the deceased persons is as follows.

Occupation	No	%
Doctor, Nurse, Pharmasyst ,Para Medical Staff	461	6.29
Engineer and other Technical Persons	1423	19.41
Manager, Supervisor, Other Executives	710	9.68
Cook, Hotel Boy etc	301	4.10
Driver	1067	14.55
Sales man, worker, Gardner etc	1478	20.16
Other	1893	25.81
Total	7333	100.00

- 5.3 With respect to the cause of death, it is seen that about 50% are died due to illness and about 42% by accident.

The number of person died due to various reasons is given below.

Reason	No	percentage
Illness	3613	44.27
Accident	3062	41.75
Suicide	192	2.62
Other reason	466	11.36
Total	7333	100.00

- 5.4 Out of 7333 persons died abroad the dead body of 4747 (64.73%) persons were brought to the State and 2586 were buried in foreign country itself.

The period taken to bring the body to homeland is given below.

Period	No.	Percentage
Below 1 month	2499	52.64
1 to 2 months	1235	26.02
3 to 4 months	356	7.50
5 to 6 months	151	3.18
Above 6 months	506	10.66
Total	4747	100.00

- 5.5 As regards the reason for dead body not brought to homeland, it is seen that 33.33% are due to financial difficulty and 41.23% are due to legal and other unspecified reasons. In 7.82% of the cases there was nobody to accept the body, in 9.91% the body was not in a position to be brought to homeland because of its condition. In 7.74% of the case there was reluctance from the part of the sponsor.

5.6 Various agencies like employer, Embassy, friends and relatives, etc. had provided help to bring the body to homeland. The different agencies provided assistance and the number of case assisted by each agency is detailed below:

The various agencies or institutes provided help to bring the body to homeland

Institution/Agency	No of cases	Percentage
Employer/Institution	3061	64.48
Embassy	204	4.30
Relatives and friends	818	17.23
Associations	150	3.15
(Not known and others)	514	10.83
Total	4747	100.00

5.7 Considering the benefits due to the deceased employee, it is seen that in 2769 cases (37.76%) the total benefits were received from their employer. As regards the period taken to receive the benefits 18.34% took 2 to 3 months time, 31.83% took 4 to 6 months, 2.24% took 7 to 12 months and 9.19% took more than one year. In 82.61% of the case, the families were fully dependent of the deceased.

Chapter -VI
**SUMMARY, CONCLUSION
AND VIEWS**

Summary, Conclusion and Views

Kerala located in the southern end of the country is generally quoted as a consumer state. More over there is a public opinion that the Kerala Economy depend on foreign earnings especially Gulf money. The present study was targeted to assess the dimensions of migration, its impact, etc. the study covered 1.29 lakhs of the household in the state with proportionate representation from all parts . The sample size is sufficient enough to have a proper estimate of the over all indications. The study reveals that 13.84 Keralites are residing out side India out of which 11.40 lakhs are employed and 2.44 lakhs are their dependent in the migrant country. The permanent employees in the state constituted 40.91 lakhs of which 10.37 lakhs are in Government or Quasi Government Sector. It shows that the employed migrants are more than the number of employees in the state in Government Sector. As the wage rate of migrants are more than the wage rate of Government Sector in the State, the total earnings of the migrants are very much higher than that of employees in Government/Quasi Government sector. Any of the sector like Agriculture, Industry, Trade & Commerce, etc. is not contributing to the states economy to a notable extent as a single factor. Thus the single factor that contributed maximum to the Kerala Economy is the service sector. The following indicators are obtained from the study.

AN EPITOME OF FINDINGS

- There are 65.70 lakhs house holds in the State in 1999.
- The states population (usual residents) during 1999 is 314.67 lakhs
- There are 13.84 lakhs migrants out of which 11.40 are employed and 2.44 are there dependents.(including job seekers
- 3.62% of the usual resident is an employed migrant.
- There are only 10.37 lakhs persons permanently employed in the state Government/Quasi Government Sector. The employed migrants are more than that
- 13.56% of the house holds were having at least one migrant.

- 7.63% of the households were having at least one returnee.
- The families of the migrants were having more domestic facilities in their houses
- The family size of families with both migrants and returnees are high.
- The per capita expenditure of migrants families are 50% more than that of State average.
- The investment made during last time by the migrant families are more than that of other families.
- The maximum number of employed migrants are in UAE with 4.09 lakhs.
- The maximum number of migrants are from Malappuram.
- More than 80% of the migrants have no technical qualification.
- More than 50% of the employees are in the category of worker or Driver of Salesman. About 2 lakhs have not specified the job.
- The migrants in Australia are in Professional and Executive category.
- About 90% of the migrants are employed in private sector/self-employed.
- 75% of the employed migrants have migrated on job visa.
- 17.87% of the migrants purchased land utilizing the money earned from abroad.
- 36.97% of the migrants secured job through agency.
- 21.48% of migrants secured visa by paying upto Rs.50000/-
- In more than 50% of the case, the visa was obtained within a period of one month.
- Only 8.03% of the migrants joined in the insurance scheme.
- 31.74% of the returnees were send back or retrenched from foreign countries.

LIMITATIONS

The survey was conducted by household enquiry in the state and information about the migrants is collected from their family members. The migrated country, qualification of the migrants, etc. are properly reported by all the house holds. But with regards to the expenditure incurred in connection with the visa, i.e. amount paid to agencies, etc. the details are not properly given. Above all, the problems faced by migrants, the actual job, salary paid by the employer, other benefits provided at the migrant countries, etc. are not known to the house holds. There are cases of hesitation to report the actual income earned by the migrant, money received from the migrants to the family and expenditure of the household. However the details on bank deposits by the NRIs are collected from secondary sources and appended in the report

CONCLUSION

There requires further bench mark surveys on the matter periodically. The help of travel agencies, Airport Authorities, Banks, Indian Embassies are to be utilized for collecting the details on some important parameters like no. of migrants, no. of returnees qualification, job abroad, inflow of money etc. Internet, E-mail facilities may be used for collecting information.



Appendix

Tables

List of Tables

Table		Page
1.1	District wise Distribution of Selected Households according to Religion	45
1.2	District wise Distribution of Selected Households according to Social group	46
2.1	Distribution of Households according to size	47
2.2	Age wise, Sex wise Distribution of Population (Residents)	48
2.3	Distribution of Persons according to Residential Status	49
2.4	% Distribution of persons to present population	50
2.5	% Distribution of families according to size	51
2.6	% Distribution of family members according to Age & Sex	52
2.7	% Distribution of persons according to General. Education	53
2.8	Estimated - Distribution of family members according to permanent employment	54
2.9	% Distribution of family members according to permanent employment	55
2.10	Estimated-Distribution of family members according to temporary employment	56
2.11	% Distribution of family members according to temporary employment	57
2.12	Estimated-Distribution of unemployed family members according to status	58
2.13	% Distribution of unemployed family members according to status	59
2.14	% Distribution of house holds according to household type	60
2.15	% Distribution of family according to the extend of land possessed	61
2.16	% Distribution of houses according to age and status	61
2.17	District wise Per1000 distribution of houses according to domestic facilities	62
2.18	Status wisePer1000 Distribution of houses according to domestic facilities	64
2.19	District wise per capita monthly expenditure and average family size	65
2.20	Per capita monthly expenditure according to status and average family size	66
2.21	Per 1000-distribution of families according to range of capital investment	66

3.1a	Country wise distribution of migrants	67
3.1b	District wise distribution of migrants	68
3.1c	District wise distribution of employed migrants according to sex	69
3.1d	Country wise employed migrants according to sex	70
3.2	Country wise distribution of migrants	71
3.3a	Marital status of employed migrants according to age & sex	72
3.3 b	Marital status of unemployed migrants according to age & sex	72
3.3 c	Marital status of migrants according to age & sex	72
3.4	Distribution of employed migrants according to general education	73
3.4 a	% Distribution of employed migrants according to general education	74
3.5	Distribution of migrants according to qualification-district wise	75
3.5 a	% Distribution of migrants according to qualification-district wise	76
3.6 a	Country wise distribution of migrants according to job	77
3.6 b	% Country wise distribution of migrants according to job	78
3.7a	Distribution of migrants according to employment institutions category	79
3.7b	Distribution of migrants according to employment institutions category %	80
3.8 a	Distribution of employer status	81
3.8 b	Distribution of employer status %	82
3.9 a	Distribution of reason for migration-employed migrants	83
3.9 b	% Distribution of reason for migration-employed migrants	84
3.10 a	Estimation of employed migrants-period stayed in present country (years)	85
3.10 b	% Distribution of migrants - period stayed in present country (Years)	86
3.11 a	Distribution of persons stayed abroad	87
3.11 b	% Distribution of persons stayed abroad	88
3.12	Per 1000-Distribution of utilization of earnings	89
3.13	% Distribution of area of land purchased	90

3.14	Per 1000 - Distribution of way of sending money to homeland	91
3.15	Per 1000 - Distribution of way of sending money to homeland	92
3.16 a	By whom the migrant got the present Job	93
3.16 b	By whom the migrant got the present Job %	94
3.17	Per 1000 - Distribution - Number of Visa taken	95
3.18 a	Country wise distribution of present visa according to amount paid	96
3.18 b	Country wise distribution of present visa according to amount paid %	97
3.19 a	Country wise distribution of time taken to get present visa estimated	98
3.19 b	Country wise distribution of time taken to get present visa %	99
3.20 a	Problems faced in getting present Visa estimated	100
3.20 b	Problems faced in getting present Visa estimated - (%)	100
3.21 a	Country wise distribution - Benefits estimated	101
3.21 b	Qualification wise distribution - Benefits estimated	102
3.21 c	Job wise distribution - Benefits estimated	103
3.22 a	% of member of Norka Insurance Scheme	104
3.22 b	Per 1000-Distribution of reason for not joining the scheme	105
3.22 c	From where the application form received	106
3.22 d	Per 1000 of From where the details of NORKA Insurance Scheme got	107
3.22 e	Benefits to be included in the NORKA Insurance Scheme	108
3.23 a	Disease % and help received	109
4.1	Number of Returnees with reason for return - (District wise)	110
4.2	Number of Returnees with reason for return - (Country wise)	111
4.3	Age wise distribution of Returnees - Estimated (Country wise)	112
4.4	Age wise distribution of Returnees-Estimated (District wise)	113
4.5	% Distribution of Returnees who were employed after return	114
4.6	Per 1000-Distribution of Returnees according to present employment status	115

4.7	% Distribution of Returnees who had got total benefits	116
4.8	% Distribution of period taken to get benefit	117
4.9	% Distribution of Persons Who got Customs Benefits while returned in TR	118
4.10	% Distribution of difficulties experienced	119
4.11	% Distribution of Returnees - Whether earnings send to house hold	120
4.12	% Distribution - Way in which money was send	121
4.13	% Distribution of Returnees whether there was earnings while in abroad	122
4.14	Per 1000 - Distribution of persons utilized their earnings in different purposes	123
4.15	% Distribution of - Area of land purchased (in cents)	124
4.16	Per 1000 - Distribution - Expecting help for starting enterprises	125
4.17	NRE Deposits in Kerala	126

Table 1.1

District wise Distribution of Selected Households according to Religion

District	Hindu	%	Christian	%	Muslim	%	Others	%	Total	%
01 Kasaragod	2865	2.22	319	0.25	1095	0.85	1	0.00	4280	3.31
02 Kannur	5864	4.54	932	0.72	1763	1.36	1	0.00	8560	6.62
03 Wayanad	1641	1.27	633	0.49	678	0.52	8	0.01	2960	2.29
04 Kozhikode	6794	5.26	404	0.31	3500	2.71	2	0.00	10700	8.28
05 Malappuram	4207	3.26	347	0.27	7038	5.45	8	0.01	11600	8.98
06 Palakkad	8060	6.24	409	0.32	2310	1.79	1	0.00	10780	8.34
07 Thrissur	7448	5.76	3069	2.37	1902	1.47	1	0.00	12420	9.61
08 Ernakulam	5745	4.45	4836	3.74	1756	1.36	3	0.00	12340	9.55
09 Idukki	3255	2.52	2128	1.65	454	0.35	3	0.00	5840	4.52
10 Kottayam	3955	3.06	3883	3.00	355	0.27	7	0.01	8200	6.34
11 Alappuzha	6371	4.93	2238	1.73	610	0.47	1	0.00	9220	7.13
12 Pathanamthitta	3353	2.59	2613	2.02	172	0.13	2	0.00	6140	4.75
13 Kollam	7186	5.56	2081	1.61	1911	1.48	2	0.00	11180	8.65
14 Thiruvananthapuram	10597	8.20	3003	2.32	1404	1.09	16	0.01	15020	11.62
Total	77341	59.84	26895	20.81	24948	19.30	56	0.04	129240	100.00

• Sum of percentages may not agree due to rounding off.

Table 1.2

District wise Distribution of Selected Households according to Social group

	District	SC	%	ST	%	OBC	%	Others	%	Total	%
01	Kasaragod	302	0.23	152	0.12	2430	1.88	1396	1.08	4280	3.31
02	Kannur	406	0.31	114	0.09	5619	4.35	2421	1.87	8560	6.62
03	Wayanad	115	0.09	519	0.40	1243	0.96	1083	0.84	2960	2.29
04	Kozhikode	683	0.53	118	0.09	7575	5.86	2324	1.80	10700	8.28
05	Malappuram	1025	0.79	78	0.06	9217	7.13	1280	0.99	11600	8.98
06	Palakkad	1670	1.29	172	0.13	5415	4.19	3523	2.73	10780	8.34
07	Thrissur	1300	1.01	104	0.08	5892	4.56	5124	3.96	12420	9.61
08	Eranakulam	915	0.71	87	0.07	5547	4.29	5791	4.48	12340	9.55
09	Idukki	292	0.23	583	0.45	1774	1.37	3191	2.47	5840	4.52
10	Kottayam	453	0.35	111	0.09	2398	1.86	5238	4.05	8200	6.34
11	Alappuzha	629	0.49	97	0.08	4442	3.44	4052	3.14	9220	7.13
12	Pathanamthitta	649	0.50	76	0.06	1222	0.95	4193	3.24	6140	4.75
13	Kollam	1062	0.82	227	0.18	5170	4.00	4721	3.65	11180	8.65
14	Thiruvananthapuram	1459	1.13	346	0.27	8268	6.40	4947	3.83	15020	11.62
	Total	10960	8.48	2784	2.15	66212	51.23	49284	38.13	129240	100.00

Table 2.1

Distribution of Households according to size

District	House hold Size											Total
	1	2	3	4	5	6	7	8	9	10	11	
1 Kasaragod	5667	13671	30125	52943	39372	27938	16852	10290	6612	4027	5170	212668
2 Kannur	8054	23175	49364	105691	91869	55755	35490	23539	18706	13302	19642	444588
3 Wayanad	3717	9240	22941	48058	34411	19276	8443	4354	2974	1646	2018	157079
4 Kozhikode	10108	30966	70709	141368	110353	62671	35699	22238	16420	11242	15434	527209
5 Malappuram	12634	27007	55548	106289	118309	88898	57645	38822	29002	20869	38106	593129
6 Palakkad	17682	38919	70282	126388	110929	69738	37684	23559	15014	10816	11211	532224
7 Thrissur	15086	42360	86518	181629	129028	63840	38564	23578	16884	10940	11739	620165
8 Ernakulam	10039	41207	101756	220332	140440	66541	28698	16399	10827	6780	5571	648591
9 Idukki	5249	21144	44643	94339	66719	29680	13442	6181	2796	1226	1030	286451
10 Kottayam	5864	25513	59204	134817	100251	50306	24484	10442	4835	2880	3189	421786
11 Alappuzha	9539	31495	68592	146622	101802	52945	23621	13224	8076	5401	3483	464798
12 Pathanamthitta	6205	21693	49686	92880	65511	34150	12025	6012	3463	1876	1587	295089
13 Kollam	13178	39900	92510	197209	122461	61830	24951	14897	7865	3646	3021	581469
14 Thiruvananthapuram	25859	69689	138125	263920	149409	68749	31240	17292	9194	6112	4963	784552
Total	148882	435979	940003	1912484	1380865	752318	388839	230828	152669	100765	126165	6569797

Table 2.2
Age-wise, Sexwise Distribution of Population (Residents)

District	0-4		5-14		15-19		20-29	
	Male	Female	Male	Female	Male	Female	Male	Female
1 Kasaragod	28684	28236	96690	91470	61394	61891	107477	118563
2 Kannur	72279	69473	223645	200262	129126	126840	235077	253056
3 Wayanad	27507	28994	70893	68822	40624	38818	72751	77690
4 Kozhikode	90827	90827	253644	228694	135402	140431	249601	284511
5 Malappuram	158205	153448	421727	404592	218204	221631	298713	345873
6 Palakkad	81098	78480	237713	230552	142193	149750	245369	269372
7 Thrissur	101554	99506	255409	244569	142516	139918	273342	298968
8 Ernakulam	95291	92348	224063	212395	129823	130401	283456	300013
9 Idukki	45869	45918	115238	101452	61176	58477	129808	132408
10 Kottayam	61776	65428	159044	141298	81785	78493	176636	190935
11 Alappuzha	63797	62283	166558	160703	88326	93424	190431	231112
12 Pathanamthitta	37084	35738	101826	97016	55362	59258	114861	127319
13 Kollam	77769	79800	214815	202261	122982	132983	232577	277842
14 Thiruvananthapuram	106310	109862	286593	277189	151132	160327	289414	343222
Total	1048052	1040343	2827858	2661277	1560045	1592643	2899513	3250883

District	30-39		40-49		50-59		above60		Total
	Male	Female	Male	Female	Male	Female	Male	Female	
Kasaragod	79489	89034	63035	61891	42454	40714	43597	46182	1060803
Kannur	177035	207953	140246	144143	86049	96078	105743	135154	2402158
Wayanad	55652	62449	48164	38765	23896	24799	26180	27507	733512
Kozhikode	190430	222826	152906	159612	101428	106803	119919	133873	2661732
Malappuram	187667	261476	152988	170584	102146	113705	121787	137081	3469827
Palakkad	195040	210154	153800	155924	103175	105694	116511	140958	2615783
Thrissur	230133	258207	175584	184726	113093	130377	150258	187473	29855635
Ernakulam	251605	255600	200779	192948	129140	128404	151163	169927	2947357
Idukki	105426	106947	84233	76286	52296	47047	51266	50383	1264230
Kottayam	163159	165320	129365	125867	88935	84769	111876	123295	1947983
Alappuzha	174482	186747	135467	137234	88326	95998	118105	139808	2132801
Pathanamthitta	96968	110436	80422	91100	61038	61086	84414	91244	1305172
Kollam	192729	223201	161944	173612	107512	107147	127462	145484	2580120
Thiruvananthapuram	263868	300175	213247	229598	142983	145282	160902	179499	3359603
Total	2363685	2660523	1892181	1942289	1242472	1287902	1489181	1707869	31466716

Table 2.3

Distribution of Persons according to Residential Status

District	Migrants			Residents		
	Employed	Dependants	Total	Returnees	Others	Total
1 Kasaragod	39123	7407	46530	21128	1039676	1060804
2 Kannur	114525	20577	135102	36737	2365421	2402158
3 Wayanad	6372	425	6797	3399	730114	733513
4 Kozhikode	107493	11390	118883	49309	2612423	2661732
5 Malappuram	201734	37237	238971	90688	3379138	3469826
6 Palakkad	59860	8051	67911	24942	2590841	2615783
7 Thrissur	126780	20880	147660	53849	2931786	2985635
8 Ernakulam	60497	18816	79313	31746	2915612	2947358
9 Idukki	9615	2993	12608	3925	1260306	1264231
10 Kottayam	45882	24536	70418	16666	1931317	1947983
11 Alappuzha	69298	20138	89436	26599	2106202	2132801
12 Pathanamthitta	61904	31938	93842	23761	1281410	1305171
13 Kollam	113710	18127	131837	68028	2512092	2580120
14 Thiruvananthapuram	123340	20949	144289	92466	3267136	3359602
Total	1140133	243464	1383597	543243	30923474	31466717

Table 2.4

% Distribution of Persons to Present Population

District	Migrants				Residents			Total
	Employed	Dependants	Total	Returns	Others	Total		
1 Kasaragod	3.69	0.70	4.39	1.99	98.01	100		
2 Kannur	4.77	0.86	5.62	1.53	98.47	100		
3 Wayanad	0.87	0.06	0.93	0.46	99.54	100		
4 Kozhikode	4.04	0.43	4.47	1.85	98.15	100		
5 Malappuram	5.81	1.07	6.89	2.61	97.39	100		
6 Palakkad	2.29	0.31	2.60	0.95	99.05	100		
7 Thrissur	4.25	0.70	4.95	1.80	98.20	100		
8 Eranakulam	2.05	0.64	2.69	1.08	98.92	100		
9 Idukki	0.76	0.24	1.00	0.31	99.69	100		
10 Kottayam	2.36	1.26	3.61	0.86	99.14	100		
11 Alappuzha	3.25	0.94	4.19	1.25	98.75	100		
12 Pathanamthitta	4.74	2.45	7.19	1.82	98.18	100		
13 Kollam	4.41	0.70	5.11	2.64	97.36	100		
14 Thiruvananthapuram	3.67	0.62	4.29	2.75	97.25	100		
Total	3.62	0.77	4.40	1.73	98.27	100		

Table 2.5

Percentage Distribution of Families according to Size

	District	1	2	3	4	5	6	7	8	9	10	Above 10	Total
1	Kasaragod	2.66	6.43	14.17	24.89	18.51	13.14	7.92	4.84	3.11	1.89	2.43	100.00
2	Kannur	1.81	5.21	11.10	23.77	20.66	12.54	7.98	5.29	4.21	2.99	4.42	100.00
3	Wayanad	2.37	5.88	14.60	30.59	21.91	12.27	5.38	2.77	1.89	1.05	1.28	100.00
4	Kozhikode	1.92	5.87	13.41	26.81	20.93	11.89	6.77	4.22	3.11	2.13	2.93	100.00
5	Malappuram	2.13	4.55	9.37	17.92	19.95	14.99	9.72	6.55	4.89	3.52	6.42	100.00
6	Palakkad	3.32	7.31	13.21	23.75	20.84	13.10	7.08	4.43	2.82	2.03	2.11	100.00
7	Thrissur	2.43	6.83	13.95	29.29	20.81	10.29	6.22	3.80	2.72	1.76	1.89	100.00
8	Ernakulam	1.55	6.35	15.69	33.97	21.65	10.26	4.42	2.53	1.67	1.05	0.86	100.00
9	Idukki	1.83	7.38	15.58	32.93	23.29	10.36	4.69	2.16	0.98	0.43	0.36	100.00
10	Kottayam	1.39	6.05	14.04	31.96	23.77	11.93	5.80	2.48	1.15	0.68	0.76	100.00
11	Alappuzha	2.05	6.78	14.76	31.55	21.90	11.39	5.08	2.85	1.74	1.16	0.75	100.00
12	Pathanamthitta	2.10	7.35	16.84	31.48	22.20	11.57	4.07	2.04	1.17	0.64	0.54	100.00
13	Kollam	2.27	6.86	15.91	33.92	21.06	10.63	4.29	2.56	1.35	0.63	0.52	100.00
14	Thiruvananthapuram	3.30	8.88	17.61	33.64	19.04	8.76	3.98	2.20	1.17	0.78	0.63	100.00
		2.27	6.64	14.30	29.07	21.02	11.46	5.93	3.52	2.33	1.54	1.92	

Table 2.6

Percentage Distribution of Family members according to Age & Sex

	District	0 - 4		5 - 14		15 - 19		20 - 29		30 - 39		40 - 49		50 - 59		above 60		Total
		Male	Fem	Male	Fem	Male	Fem	Male	Fem	Male	Fem	Male	Fem	Male	Fem	Male	Fem	
1	Kasaragod	2.70	2.66	9.11	8.62	5.79	5.83	10.13	11.18	7.49	8.39	5.94	5.83	4.00	3.84	4.11	4.35	100.00
2	Kannur	3.01	2.89	9.31	8.34	5.38	5.28	9.79	10.53	7.37	8.66	5.84	6.00	3.58	4.00	4.40	5.63	100.00
3	Wayanad	3.75	3.95	9.66	9.38	5.54	5.29	9.92	10.59	7.59	8.51	6.57	5.28	3.26	3.38	3.57	3.75	100.00
4	Kozhikode	3.41	3.41	9.53	8.59	5.09	5.28	9.38	10.69	7.15	8.37	5.74	6.00	3.81	4.01	4.51	5.03	100.00
5	Malappuram	4.56	4.42	12.15	11.66	6.29	6.39	8.61	9.97	5.41	7.54	4.41	4.92	2.94	3.28	3.51	3.95	100.00
6	Palakkad	3.10	3.00	9.09	8.81	5.44	5.72	9.38	10.30	7.46	8.03	5.88	5.96	3.94	4.04	4.45	5.39	100.00
7	Thrissur	3.40	3.33	8.55	8.19	4.77	4.69	9.16	10.01	7.71	8.65	5.88	6.19	3.79	4.37	5.03	6.28	100.00
8	Eranakulam	3.23	3.13	7.60	7.21	4.40	4.42	9.62	10.18	8.54	8.67	6.81	6.55	4.38	4.36	5.13	5.77	100.00
9	Idukki	3.63	3.63	9.12	8.02	4.84	4.63	10.27	10.47	8.34	8.46	6.66	6.03	4.14	3.72	4.06	3.99	100.00
10	Kottayam	3.17	3.36	8.16	7.25	4.20	4.03	9.07	9.80	8.38	8.49	6.64	6.46	4.57	4.35	5.74	6.33	100.00
11	Alappuzha	2.99	2.92	7.81	7.53	4.14	4.38	8.93	10.84	8.18	8.76	6.35	6.43	4.14	4.50	5.54	6.56	100.00
12	Pathanamthitta	2.84	2.74	7.80	7.43	4.24	4.54	8.80	9.75	7.43	8.46	6.16	6.98	4.68	4.68	6.47	6.99	100.00
13	Kollam	3.01	3.09	8.33	7.84	4.77	5.15	9.01	10.77	7.47	8.65	6.28	6.73	4.17	4.15	4.94	5.64	100.00
14	Thiruvananthapuram	3.16	3.27	8.53	8.25	4.50	4.77	8.61	10.22	7.85	8.93	6.35	6.83	4.26	4.32	4.79	5.34	100.00
		3.33	3.30	8.99	8.46	4.96	5.06	9.22	10.33	7.51	8.45	6.01	6.17	3.95	4.09	4.73	5.43	

Table 2.7

% Distribution of Persons according to General Education

District	Illiterate	Below Primary	Lower Primary	Upper Primary	SSLC	PDC HSec	Graduate	PG and Others	
Kasaragod	11.51	13.00	25.63	29.48	13.82	3.49	2.59	0.49	100
Kannur	5.71	10.10	21.85	29.02	21.25	7.15	3.95	0.98	100
Wayanad	12.76	11.12	20.72	29.80	16.40	6.40	2.32	0.47	100
Kozhikode	7.42	9.88	21.37	32.34	18.29	5.90	3.62	1.17	100
Malappuram	8.63	9.24	25.18	32.50	18.38	3.90	1.67	0.49	100
Palakkad	12.16	12.74	20.21	31.75	15.00	4.47	2.93	0.73	100
Thrissur	7.53	8.04	19.88	27.20	23.56	8.15	4.61	1.03	100
Ernakulam	4.98	8.75	17.08	27.32	24.56	10.24	5.74	1.33	100
Idukki	8.79	13.02	20.42	30.29	17.96	6.45	2.39	0.69	100
Kottayam	2.12	7.25	16.52	29.24	23.88	12.74	6.21	2.03	100
Alappuzha	3.56	8.62	20.22	31.55	23.14	7.47	4.40	1.03	100
Pathanamthitta	2.43	8.55	17.10	27.71	27.87	10.55	4.55	1.24	100
Kollam	6.50	14.19	17.54	29.22	20.60	6.75	4.08	1.12	100
Thiruvananthapuram	5.66	8.31	17.02	26.79	24.83	8.86	5.87	2.65	100
Total	6.87	9.94	19.94	29.58	21.08	7.33	4.08	1.19	100

Table 2.8

Estimated-Distribution of family members according to Permanent Employment

	District	Govt/QG	CoOp	Pvt	Self	Others	Total	Grand Total	Mig Emp
1	Kasaragod	25850	5220	39322	52247	29628	152267	191391	39123
2	Kannur	80333	18862	80801	78047	169605	427648	542173	114525
3	Wayanad	13913	1487	16409	7063	73017	111889	118260	6372
4	Kozhikode	78253	4339	72434	45117	57986	258129	365624	107493
5	Malappuram	69512	4501	47211	46137	73450	240811	442545	201734
6	Palakkad	74035	5186	72307	65540	87963	305031	364892	59860
7	Thrissur	79425	4995	71832	72232	97557	326041	452823	126780
8	Eranakulam	121939	5939	183855	132399	16873	461005	521501	60497
9	Idukki	29631	2649	110381	152031	9959	304651	314267	9615
10	Kottayam	74944	7870	60542	54472	46191	244019	289901	45882
11	Alappuzha	81361	4189	59759	63191	77272	285772	355071	69298
12	Pathanamthitta	42375	2213	35161	42616	34871	157236	219140	61904
13	Kollam	94593	11251	64017	83394	52193	305448	419159	113710
14	Thiruvananthapuram	170879	5433	33277	100720	200291	510600	633942	123340
	Total	1037046	84135	947308	995207	1026858	4090554	5230689	1140134

Table 2.9

Percentage Distribution of family members according to Permanent employment

	District	Govt/ Quasi Govt	Cooperative	Private	Self	Others	Total	% of Employed Migrants to Employment
1	Kasaragod	16.98	3.43	25.82	34.31	19.46	100.00	20.44
2	Kannur	18.78	4.41	18.89	18.25	39.66	100.00	21.12
3	Wayanad	12.43	1.33	14.67	6.31	65.26	100.00	5.39
4	Kozhikode	30.32	1.68	28.06	17.48	22.46	100.00	29.40
5	Malappuram	28.87	1.87	19.61	19.16	30.50	100.00	45.58
6	Palakkad	24.27	1.70	23.70	21.49	28.84	100.00	16.40
7	Thrissur	24.36	1.53	22.03	22.15	29.92	100.00	28.00
8	Eranakulam	26.45	1.29	39.88	28.72	3.66	100.00	11.60
9	Idukki	9.73	0.87	36.23	49.90	3.27	100.00	3.06
10	Kottayam	30.71	3.23	24.81	22.32	18.93	100.00	15.83
11	Alappuzha	28.47	1.47	20.91	22.11	27.04	100.00	19.52
12	Pathanamthitta	26.95	1.41	22.36	27.10	22.18	100.00	28.25
13	Kollam	30.97	3.68	20.96	27.30	17.09	100.00	27.13
14	Thiruvananthapuram	33.47	1.06	6.52	19.73	39.23	100.00	19.46
	Total	25.35	2.06	23.16	24.33	25.10	100.00	21.80

Table 2.10

Estimated-Distribution of family members according to Temporary employment

	District	Govt/ QG	CoOp	Pvt	Self	Others	Grand Total
1	Kasaragod	2187	1690	88537	31666	101711	225791
2	Kannur	4313	4105	58665	37569	239442	344094
3	Wayanad	1646	1328	8337	6266	161433	179010
4	Kozhikode	4093	3452	76971	37376	336877	458769
5	Malappuram	5524	4961	91455	105675	369656	577271
6	Palakkad	5186	4939	85988	69738	507332	673183
7	Thrissur	5944	4146	111045	102903	374646	598684
8	Eranakulam	6202	4310	321878	158994	35215	526599
9	Idukki	1815	2306	107339	37137	40719	189316
10	Kottayam	3909	4629	56272	76539	210687	352036
11	Alappuzha	4946	2524	85399	99329	263717	455915
12	Pathanamthitta	4233	2453	54881	44059	90667	196293
13	Kollam	6876	6199	85947	242838	169549	511409
14	Thiruvananthapuram	9351	4336	40121	166909	359468	580185
	Total	66226	51377	1272836	1216999	3261122	5868560

Table 2.11

Percentage Distribution of family members according to Temporary employment

	District	Govt/ QG	CoOp	Pvt	Self	Others	GrandTotal
1	Kasaragod	0.97	0.75	39.21	14.02	45.05	100.00
2	Kannur	1.25	1.19	17.05	10.92	69.59	100.00
3	Wayanad	0.92	0.74	4.66	3.50	90.18	100.00
4	Kozhikode	0.89	0.75	16.78	8.15	73.43	100.00
5	Malappuram	0.96	0.86	15.84	18.31	64.04	100.00
6	Palakkad	0.77	0.73	12.77	10.36	75.36	100.00
7	Thrissur	0.99	0.69	18.55	17.19	62.58	100.00
8	Eranakulam	1.18	0.82	61.12	30.19	6.69	100.00
9	Idukki	0.96	1.22	56.70	19.62	21.51	100.00
10	Kottayam	1.11	1.31	15.98	21.74	59.85	100.00
11	Alappuzha	1.08	0.55	18.73	21.79	57.84	100.00
12	Pathanamthitta	2.16	1.25	27.96	22.45	46.19	100.00
13	Kollam	1.34	1.21	16.81	47.48	33.15	100.00
14	Thiruvananthapuram	1.61	0.75	6.92	28.77	61.96	100.00
	Total	1.13	0.88	21.69	20.74	55.57	100.00

Table 2.12

Estimated-Distribution of Unemployed family members according to status

District	Job Seekers	Students	Service Pensioners	Other Pensioners	Job Not needed	Disabled	<15 and >60	Others	Total
Kasaragod	81080	252686	2088	3331	97087	34351	126666	85457	682746
Kannur	195170	561919	20733	16784	243651	55444	332142	204575	1630418
Wayanad	40199	157928	1009	1912	15241	10408	121340	94577	442614
Kozhikode	243141	635047	20364	18491	316956	49654	392004	269177	1944834
Malappuram	201376	903095	12787	13401	304288	94320	630929	491548	2651744
Palakkad	156961	561068	23016	15113	337629	53687	382425	107670	1637569
Thrissur	279037	624411	23428	9241	264151	87068	518062	255513	2060911
Eranakulam	293863	677394	29539	11458	473987	35110	403346	35058	1959755
Idukki	79916	276786	3974	2551	196184	10842	182791	17220	770264
Kottayam	153129	447865	21964	7047	161822	30811	304355	224936	1351929
Alappuzha	217535	407108	32353	28567	137385	50068	338163	179934	1391113
Pathanamthitta	116496	274983	18807	7552	90234	45742	225152	172675	951641
Kollam	336494	559331	27763	21304	175488	63861	407856	171165	1763262
Thiruvananthapuram	330841	679809	57622	30352	150297	63943	558663	397292	2268819
Total	2725237	7019430	295446	187104	2964398	685308	4923894	2706786	21507603

Table 2.13

Percentage Distribution of Unemployed family members according to status

District	Job Seekers	Students	Service Pensioners	Other Pensioners	Job Not needed	Disabled	<15and>60	Others	Total
Kasaragod	11.88	37.01	0.31	0.49	14.22	5.03	18.55	12.52	100.00
Kannur	11.97	34.46	1.27	1.03	14.94	3.40	20.37	12.55	100.00
Wayanad	9.08	35.68	0.23	0.43	3.44	2.35	27.41	21.37	100.00
Kozhikode	12.50	32.65	1.05	0.95	16.30	2.55	20.16	13.84	100.00
Malappuram	7.59	34.06	0.48	0.51	11.48	3.56	23.79	18.54	100.00
Palakkad	9.59	34.26	1.41	0.92	20.62	3.28	23.35	6.57	100.00
Thrissur	13.54	30.30	1.14	0.45	12.82	4.22	25.14	12.40	100.00
Eranakulam	14.99	34.57	1.51	0.58	24.19	1.79	20.58	1.79	100.00
Idukki	10.38	35.93	0.52	0.33	25.47	1.41	23.73	2.24	100.00
Kottayam	11.33	33.13	1.62	0.52	11.97	2.28	22.51	16.64	100.00
Alappuzha	15.64	29.26	2.33	2.05	9.88	3.60	24.31	12.93	100.00
Pathanamthitta	12.24	28.90	1.98	0.79	9.48	4.81	23.66	18.14	100.00
Kollam	19.08	31.72	1.57	1.21	9.95	3.62	23.13	9.71	100.00
Thiruvananthapuram	14.58	29.96	2.54	1.34	6.62	2.82	24.62	17.51	100.00
Total	12.67	32.64	1.37	0.87	13.78	3.19	22.89	12.59	100.00

Table 2.14

% Distribution of House holds according to Household type

District	Households having			Total
	Migrant and Returnee	Migrant	Returnees	
1 Kasaragod	1.78	11.66	6.92	100
2 Kannur	2.84	14.68	4.49	100
3 Wayanad	0.3	3.41	1.82	100
4 Kozhikode	2.07	14.28	6.62	100
5 Malappuram	3.33	23.14	10.84	100
6 Palakkad	0.9	7.94	3.5	100
7 Thrissur	2.08	13.98	6.08	100
8 Ernakulam	0.61	6.94	3.91	100
9 Idukki	0.19	2.55	1.1	100
10 Kottayam	0.6	7.23	2.95	100
11 Alappuzha	1.08	10.63	4.19	100
12 Pathanamthitta	1.34	14.5	5.96	100
13 Kollam	1.55	14.62	9.5	100
14 Thiruvananthapuram	1.62	11.54	9.37	100
Total	1.57	11.99	6.07	100

Table 2.15

% Distribution of Family according to the extend of Land Possessed

Status	Nil	<10cent	10to49	50to99	100-199	200-499	500andAb	Total
1 Migrants	2.18	14.64	48.96	15.68	10.37	6.58	1.59	100
2 Returnees	3.83	18.58	48.13	13.01	9.1	5.79	1.56	100
3 Migrants & Returnees	1.78	11.71	45.16	17.59	12.94	8.5	2.32	100
4 Others	5.21	29.52	41.88	9.79	7.04	5.22	1.34	100
Total	4.71	26.8	43.15	10.81	7.66	5.47	1.4	100

Table 2.16

% Distribution of Houses according to age and status

Status	UpTo2years	3to5years	6to10years	11to20years	Above20	Total
1 Migrants	9.24	12.16	21.5	27.61	29.49	100
2 Returnees	8.35	11.91	22.32	28.93	28.49	100
3 Migrants & Returnees	5.44	8.01	17.57	32.07	36.91	100
4 Others	9.19	11.58	24.34	28.79	26.1	100
Total	9.08	11.62	23.75	28.71	26.84	100

Table 2.17

District wise Per1000 Distribution of Houses according to Domestic Facilities

	District	Telephone	Tape	MusiSystem	CoITV	BWTV	VCR/VCP	DishAntena	GasStove	EleStove
1	2	3	4	5	6	7	8	9	10	11
1	Kasaragod	271	622	21	436	106	108	82	293	39
2	Kannur	244	666	27	475	80	159	57	288	15
3	Wayanad	126	614	87	257	55	50	80	296	23
4	Kozhikode	229	605	51	431	99	94	26	221	23
5	Malappuram	136	682	30	299	27	92	50	147	24
6	Palakkad	159	643	12	312	147	71	26	266	12
7	Thrissur	234	585	46	490	143	153	30	341	28
8	Ernakulam	269	457	72	477	327	134	9	393	23
9	Idnki	139	459	20	260	200	44	44	273	14
10	Kottayam	288	480	50	508	206	160	32	389	32
11	Alappuzha	201	448	41	394	198	132	24	307	26
12	Pathanamthitta	316	635	50	525	118	186	36	449	28
13	Kollam	217	496	75	458	146	117	11	241	29
14	Thiruvananthapuram	205	519	52	427	325	125	7	220	32
	Total	225	547	49	433	183	126	28	293	26

Table 2.17

District wise Per1000 Distribution of Houses according to Domestic Facilities

	District	Grinder	Fridge	W.Machine	Iron	SewingMachine	NewsPaper	Cycle	Two Wheelers	Car/Jeep/Boat
1	2	12	13	14	15	16	17	18	19	20
1	Kasaragod	310	263	62	467	131	324	127	71	41
2	Kannur	219	293	100	598	219	497	140	72	37
3	Wayanad	111	63	33	380	164	343	83	67	55
4	Kozhikode	378	277	75	553	204	441	167	131	45
5	Malappuram	178	243	61	680	141	275	118	66	35
6	Palakkad	347	142	29	530	141	340	325	141	26
7	Thrissur	161	306	124	614	178	422	461	175	53
8	Ernakulam	177	325	130	635	226	455	377	211	66
9	Idukki	78	103	26	414	216	434	73	52	36
10	Kottayam	194	375	116	611	273	631	209	171	80
11	Alappuzha	392	288	76	507	175	423	548	177	41
12	Pathanamthitta	173	433	91	557	237	518	256	159	75
13	Kollam	129	313	39	523	214	493	299	127	40
14	Thiruvananthapuram	196	294	68	641	157	546	149	159	41
	Total	210	293	84	583	196	461	260	142	49

Table 2.18

Status wise Per 1000 Distribution of Houses according to Domestic Facilities

Status	Telephone	Tape	MusiSystem	CoITV	BWTV	VCR/VCP	DishAntena	GasStove	EleStove	C.Range	Grinder
Migrants	337	696	79	573	85	247	38	384	40	25	301
Returnees	249	648	61	512	134	189	29	316	31	20	238
Migrants & Returnees	408	732	92	617	72	301	48	420	43	29	364
Others	191	498	40	388	213	87	25	266	22	8	182
Total	225	547	49	433	183	126	28	293	26	12	210

	Fridge	W.Machine	VacCleaner	Ac	Dish. Washer	Iron	SewingMachine	NewsPaper	Cycle	Two wheeler	Car/Jeep/Boat
Migrants	448	130	24	13	8	741	199	466	207	122	56
Returnees	342	95	19	11	6	687	195	455	250	157	63
Migrants & Returnees	503	162	27	16	8	784	210	515	242	181	82
Others	246	70	15	5	4	530	195	459	273	143	46
Total	293	84	17	7	5	583	196	461	260	142	49

Table 2.19

Districtwise PerCapita Monthly Expenditure And AvgFamilySize

	District	Food	Cloth	Education	Health	Fuel-Light	Others	Total	Avg Family Size
1	Kasaragod	295.46	40.45	22.44	36.56	27.61	31.38	453.91	4.99
2	Kannur	298.58	37.96	23.7	28.07	34.11	40.85	463.27	5.4
3	Wayanad	294.37	48.56	21.63	34.25	38.76	36.92	474.49	4.67
4	Kozhikode	329.31	39.75	24.04	28.5	42.51	67.49	531.59	5.04
5	Malappuram	290.46	33.97	18.81	30.11	30.67	27	431.01	5.85
6	Palakkad	294.56	44.87	21.01	25.58	41.4	44.81	472.23	4.91
7	Thrissur	343.18	33.4	22.78	34.37	34.36	48.91	517	4.81
8	Eranakulam	339.41	45.29	32.3	39.38	51.33	66.68	574.39	4.54
9	Idukki	281.49	43.05	19.99	27.66	21.49	44.14	437.82	4.41
10	Kottayam	358.43	44.18	37.43	36.36	36.92	106.48	619.8	4.62
11	Alappuzha	336.34	33.71	34.42	33.77	40.22	72.74	551.2	4.58
12	Pathanamthitta	359.94	43.07	36.4	36.19	39.55	51.33	566.49	4.42
13	Kollam	325.81	39.5	31.17	39.39	39.37	48.05	523.28	4.43
14	Thiruvananthapuram	384.94	33.25	36.6	32.14	37.9	69.6	594.42	4.28
	State Total/ 618882	327.2	38.98	27.48	32.75	37.67	55.05	519.12	4.79

Table 2.20

PerCapita Monthly Expenditure according to Status And AvgFamily Size

Status	Food	Cloth	Education	Health	Fuel-Light	Others	Total	Family Size
1 Migrants	400.93	49.95	37.67	43.7	46.79	71.39	650.44	4.99
2 Returnees	319.2	44.23	29.55	33.58	36.7	50.79	514.05	5.56
3 Migrants & Return	366.81	45.44	29.75	41.79	39.86	61.27	584.92	7.01
4 Others	314.97	36.56	25.59	30.65	36.23	52.64	496.65	4.66
State Total/ 618882	327.2	38.98	27.48	32.75	37.67	55.05	519.12	4.79

Table 2.21

Per1000-Distribution of families according to range of Capital Investment

Status	<=25000	25001-50000	50001-1lakh	1 - Slakh	>Slakhs	Total
1 Migrants	644	42	60	216	38	1000
2 Returnees	704	48	61	167	20	1000
3 Migrants & Retur	649	40	65	208	38	1000
4 Others	815	49	53	78	5	1000
Total	784	48	55	102	11	1000

Table 3.1a

Countrywise Distribution of migrants

Country	Employed		Dependants		Total	
	No.	%	No.	%	No.	%
Australia	957	0.08	1909	0.78	2866	0.21
Bahrain	69738	6.12	14292	5.87	84036	6.07
Bhutan	405	0.04	443	0.18	847	0.06
Canada	1860	0.16	2315	0.95	4115	0.30
Germany	1779	0.16	1867	0.77	3646	0.26
Kuwait	49626	4.35	13082	5.37	62712	4.53
Malaysia	2956	0.26	1009	0.41	3965	0.29
Oman	90076	7.90	20313	8.34	110396	7.98
Other Africans	2436	0.21	1166	0.48	3603	0.26
Other Americans	9376	0.82	12000	4.93	21377	1.54
Other Asians	5569	0.49	975	0.40	6545	0.47
Other Europeans	4066	0.36	3789	1.56	7856	0.57
Qatar	54379	4.77	8748	3.59	63131	4.56
Singapore	3613	0.32	1607	0.66	5220	0.38
Saudi Arabia	408358	35.82	52786	21.68	461179	33.33
South Africa	1960	0.17	1391	0.57	3350	0.24
U.A.E	409473	35.91	80504	33.07	490013	35.41
UK	2619	0.23	1810	0.74	4430	0.32
USA	18730	1.64	23101	9.49	41832	3.02
Other Countries	2221	0.19	357	0.15	2578	0.19
	1140134	100.00	243463	100.00	1383697	100.00

Table 3.1b

Districtwise distribution of Migrants

District	Employed		Dependants		Total	
	No.	%	No.	%	No.	%
Kasaragod	39123	3.43	7407	3.04	46530	3.36
Kannur	114525	10.04	20577	8.45	135102	9.76
Wayanad	6372	0.56	425	0.17	6797	0.49
Kozhikode	107493	9.43	11390	4.68	118883	8.59
Malappuram	201734	17.69	37237	15.29	238970	17.27
Palakkad	59860	5.25	8051	3.31	67911	4.91
Thrissur	126780	11.12	20880	8.58	147661	10.67
Ernakulam	60497	5.31	18816	7.73	79313	5.73
Idukki	9615	0.84	2993	1.23	12608	0.91
Kottayam	45882	4.02	24536	10.08	70418	5.09
Alappuzha	69298	6.08	20138	8.27	89437	6.46
Kollam	61904	5.43	31938	13.12	93842	6.78
Pathanamthitta	113710	9.97	18127	7.45	131837	9.53
Thiruvananthapuram	123340	10.82	20949	8.60	144289	10.43
	1140134	100.00	243463	100.00	1383597	100.00

Table 3.1c

Districtwise distribution of employed migrants according to sex

	District	Male		Female		Total	
		No	%	No	%	No	%
1	Kasaragod	38030	3.57	1094	1.43	39123	3.43
2	Kannur	111719	10.50	2806	3.68	114525	10.04
3	Wayanad	5629	0.53	743	0.97	6372	0.56
4	Kozhikode	102710	9.65	4783	6.27	107493	9.43
5	Malappuram	198204	18.63	3529	4.63	201734	17.69
6	Palakkad	58329	5.48	1531	2.01	59860	5.25
7	Thrissur	122684	11.53	4096	5.37	126780	11.12
8	Ernakulam	50668	4.76	9829	12.89	60497	5.31
9	Idukki	6574	0.62	3042	3.99	9615	0.84
10	Kottayam	32663	3.07	13219	17.33	45882	4.02
11	Alappuzha	61273	5.76	8025	10.52	69298	6.08
12	Pathanamthitta	51322	4.82	10582	13.88	61904	5.43
13	Kollam	106001	9.96	7709	10.11	113710	9.97
14	Thiruvananthapuram	118064	11.10	5276	6.92	123340	10.82
	Total	1063869	100.00	76265	100.00	1140134	100.00

Table 3.1d

Country wise employed migrants according to sex

Country	Male		Female		Total	
	No	%	No	%	No	%
Australia	705	0.07	252	0.33	957	0.08
Bahrain	65635	6.17	4104	5.38	69739	6.12
Bhutan	356	0.03	48	0.06	404	0.04
Canada	1255	0.12	545	0.71	1800	0.16
Germany	1016	0.10	763	1.00	1779	0.16
Kuwait	42873	4.03	6752	8.85	49625	4.35
Malaysia	2699	0.25	257	0.34	2956	0.26
Oman	83548	7.85	6527	8.56	90075	7.90
Other Africans	2231	0.21	205	0.27	2436	0.21
Other Americans	6310	0.59	3066	4.02	9376	0.82
Other Asians	5362	0.50	207	0.27	5569	0.49
Other Europeans	2635	0.25	1431	1.88	4066	0.36
Qatar	50970	4.79	3409	4.47	54379	4.77
Singapore	3103	0.29	510	0.67	3613	0.32
Saudi Arabia	387259	36.40	21099	27.67	408358	35.82
South Africa	1512	0.14	448	0.59	1960	0.17
U.A.E	389803	36.64	19670	25.79	409473	35.91
UK	2107	0.20	512	0.67	2619	0.23
USA	12524	1.18	6205	8.14	18729	1.64
Others	1967	0.18	254	0.33	2221	0.19
Total	1063870	100.00	76264	100.00	1140134	100.00

Table 3.2

Country wise distribution of migrants

Country Name	Tot Persons	Kgd	Knr	Wyd	KKd	Mlp	Pkd	Tsr	EkM	Idk	Ktm	Alp	Pta	Klm	Tvm
U.A.E	409473	25751	58613	903	31163	68438	19756	54998	15978	2159	10699	19381	19913	30368	51353
Soudi Arabia	408359	5419	25721	3930	27958	109102	25535	30621	24756	3483	13991	26044	17508	54954	39337
Oman	90074	1640	8522	372	7939	6803	4346	12438	4257	1079	3858	6662	5291	12449	14418
Behrin	69739	1939	8470	106	17899	3376	2420	8842	4100	392	2160	4795	4858	5001	5381
Quatar	54379	1243	6028	531	12376	5984	3803	10890	2733	491	1080	1767	1924	2865	2664
Kuwait	49626	1839	3793	266	8087	3836	1926	5045	3259	687	3189	4896	4666	4167	3970
USA+ Other American	29906	597	987	0	838	563	988	1148	2996	589	7201	3735	5099	2500	2665
Other Asians	7794	149	312	159	197	2916	445	649	473	147	514	404	385	313	731
Singapore/ Malaysia	6567	298	935	106	394	409	296	749	420	49	669	303	529	313	1097
Other Europeans	5845	149	156	0	197	0	49	400	999	540	1595	505	577	156	522
Africans + UK+ Australia	8372	99	988	0	444	306	296	999	526	0	926	807	1154	626	1201
All Countries	1140134	39123	114525	6373	107492	201733	59860	126779	60497	9616	45882	69299	61904	113712	123339

Table 3.3a

Marital Status of employed Migrants according to Age & Sex

Marital Status	Less Than 20		20-30		30-40		40-50		50-60		Above 60		Total		
	Male	Female	Male	Female	Male	Female	Male	Female	Male	Female	Male	Female			
Married	0	206	127822	14584	399544	28611	235453	12877	52253	2649	5261	51	820333	58978	879311
UnMarried	2783	208	193697	10814	40541	1786	2497	203	152	51	53	0	239723	13062	252785
Widower	0	0	359	0	505	0	408	0	356	0	0	0	1628	0	1628
Widow	0	0	0	99	0	610	0	764	0	251	0	0	1724	1724	1724
Divorced	0	0	871	508	812	359	355	207	50	0	0	0	2088	1074	3162
Separated	0	0	101	52	307	557	102	354	51	0	0	0	561	963	1524
Total	2783	414	322850	26057	441709	31923	238815	14405	52862	2951	5314	51	1064333	75801	1140134

Table 3.3 b

Marital Status of unemployed Migrants according to Age & Sex

Married	0	1078	3575	30061	9577	26856	5538	9290	3048	2151	2047	2162	23785	71598	95383
UnMarried	62749	58163	10728	4232	2053	490	356	366	0	235	0	124	75886	63610	139496
Widower	0	0	0	0	0	0	0	0	0	0	497	0	497	0	497
Widow	0	0	0	0	0	0	0	493	0	597	0	2183	0	3273	3273
Divorced	0	0	122	355	239	843	119	483	365	118	240	729	1085	2528	3613
Separated	0	0	117	239	120	365	237	124	0	0	0	0	474	728	1202
Total	62749	59241	14542	34887	11989	28554	6250	10756	3413	3101	2784	5198	101727	141737	243464

Table 3.3 c

Marital Status of Migrants according to Age & Sex

Married	0	1284	131397	44645	409121	55467	240991	22167	55301	4800	7308	2213	844118	130576	974694
UnMarried	65532	58371	204425	15046	42594	2276	2853	569	152	286	53	124	315609	76672	392281
Widower	0	0	359	0	505	0	408	0	356	0	497	0	2125	0	2125
Widow	0	0	0	99	0	610	0	1257	0	848	0	2183	0	4997	4997
Divorced	0	0	993	863	1051	1202	474	690	415	118	240	729	3173	3602	6775
Separated	0	0	218	291	427	922	339	478	51	0	0	0	1035	1691	2726
Total	65532	59655	337392	60944	453698	60477	245065	25161	56275	6052	8098	5249	1166060	217538	1383598

Table 3.4

Distribution of Employed Migrants according to General Education

District	Illiterate	Below Primary	Lower Primary	Upper Primary	SSLC	PDC	Graduate and Above	Total
1 Kasaragod	696	2088	7159	15659	9893	1740	1889	39123
2 Kannur	468	1975	12367	37153	40946	11640	9977	114525
3 Wayanad	106	372	1168	2283	1752	319	372	6372
4 Kozhikode	2022	4191	16420	40384	29339	8333	6805	107493
5 Malappuram	3632	6394	40459	77798	56622	10946	5882	201734
6 Palakkad	395	2766	8594	22472	16101	4248	5285	59860
7 Thrissur	649	1598	9941	35766	52101	14336	12388	126780
8 Ernakulam	631	578	2102	11248	20131	16399	9408	60497
9 Idukki	98	245	540	1766	2600	2943	1423	9615
10 Kottayam	51	309	412	3601	12962	15894	12654	45882
11 Alappuzha	303	252	1817	12265	33413	11962	9287	69298
12 Pathanamthitta	241	144	481	6686	26791	16498	11063	61904
13 Kollam	521	2292	6615	31149	50266	12918	9949	113710
14 Thiruvananthapuram	1045	1411	4702	33330	53233	16508	13112	123340
Total	10857	24615	112776	331560	406150	144684	109493	1140134

Table 3.4 a

%Distribution of Employed Migrants according to General Education

	District	Illiterate	Below Primary	Lower Primary	Upper Primary	SSLC	PDC	Graduate and Above	Total
1	Kasaragod	1.78	5.34	18.30	40.03	25.29	4.45	4.83	100.00
2	Kannur	0.41	1.72	10.80	32.44	35.75	10.16	8.71	100.00
3	Wayanad	1.67	5.83	18.33	35.83	27.50	5.00	5.83	100.00
4	Kozhikode	1.88	3.90	15.28	37.57	27.29	7.75	6.33	100.00
5	Malappuram	1.80	3.17	20.06	38.56	28.07	5.43	2.92	100.00
6	Palakkad	0.66	4.62	14.36	37.54	26.90	7.10	8.83	100.00
7	Thrissur	0.51	1.26	7.84	28.21	41.10	11.31	9.77	100.00
8	Ernakulam	1.04	0.96	3.48	18.59	33.28	27.11	15.55	100.00
9	Idukki	1.02	2.55	5.61	18.37	27.04	30.61	14.80	100.00
10	Kottayam	0.11	0.67	0.90	7.85	28.25	34.64	27.58	100.00
11	Alappuzha	0.44	0.36	2.62	17.70	48.22	17.26	13.40	100.00
12	Pathanamthitta	0.39	0.23	0.78	10.80	43.28	26.65	17.87	100.00
13	Kollam	0.46	2.02	5.82	27.39	44.21	11.36	8.75	100.00
14	Thiruvananthapuram	0.85	1.14	3.81	27.02	43.16	13.38	10.63	100.00
	Total	0.95	2.16	9.89	29.08	35.62	12.69	9.60	100.00

Table 3.5

Distribution of Migrants according to Qualification-District wise

	District	Non Technical	Certificate/ Equivalent	Diplo/ Equivalent	Engg/PGEng	Medi/PGmedi	Other Techn	Others	Total
1	Kasaragod	37781	696	398	249	0	0	0	39123
2	Kannur	104028	5560	3481	1143	104	156	52	114525
3	Wayanad	5417	266	266	53	0	53	319	6372
4	Kozhikode	101132	2613	2022	1183	247	247	49	107493
5	Malappuram	197590	1330	1944	460	51	51	307	201734
6	Palakkad	49340	6964	2124	1037	148	0	247	59860
7	Thrissur	104851	12588	5445	1598	649	500	1149	126780
8	Ernakulam	37423	11616	7516	2523	1209	53	158	60497
9	Idukki	5298	1766	1864	540	49	0	98	9615
10	Kottayam	17540	12345	10185	2006	823	2520	463	45882
11	Alappuzha	35381	24731	5501	1514	555	808	808	69298
12	Pathanamthitta	29052	20490	7071	1780	721	2116	673	61904
13	Kollam	94333	13126	3490	1719	938	52	52	113710
14	Thiruvananthapuram	102392	10135	5329	4179	784	366	157	123340
	Total	921559	124226	56634	19985	6278	6921	4531	1140134

Table 3.5 a

% Distribution of Migrants according to Qualification-District wise

	District	Non Technical	Certificate/ Equivalent	Diplo/ Equivalent	Engg/PGEng	Medi/PGmedi	OtherTechn	Others	Total
1	Kasaragod	96.57	1.78	1.02	0.64	0.00	0.00	0.00	100
2	Kannur	90.83	4.85	3.04	1.00	0.09	0.14	0.05	100
3	Wayanad	85.01	4.17	4.17	0.83	0.00	0.83	5.01	100
4	Kozhikode	94.08	2.43	1.88	1.10	0.23	0.23	0.05	100
5	Malappuram	97.95	0.66	0.96	0.23	0.03	0.03	0.15	100
6	Palakkad	82.43	11.63	3.55	1.73	0.25	0.00	0.41	100
7	Thrissur	82.70	9.93	4.29	1.26	0.51	0.39	0.91	100
8	Eranakulam	61.86	19.20	12.42	4.17	2.00	0.09	0.26	100
9	Idukki	55.10	18.37	19.39	5.62	0.51	0.00	1.02	100
10	Kottayam	38.23	26.91	22.20	4.37	1.79	5.49	1.01	100
11	Alappuzha	51.06	35.69	7.94	2.18	0.80	1.17	1.17	100
12	Pathanamthitta	46.93	33.10	11.42	2.88	1.16	3.42	1.09	100
13	Kollam	82.96	11.54	3.07	1.51	0.82	0.05	0.05	100
14	Thiruvananthapuram	83.02	8.22	4.32	3.39	0.64	0.30	0.13	100
	Total	80.83	10.90	4.97	1.74	0.55	0.61	0.40	100

Table 3.6 a

Country wise Distribution of migrants according to job

Country	Doctor	Nurse	Pharm	ParaMedi	Ragg	TechExp	Manager	Supervisor	TechOil	Worker	Propt	Salesman	Teacher	Nonteach	Officework	CookChef	HotelBoy	Gardner	Driver	servant	Others	Total
U.A.E	3890	13112	8200	2379	6901	25427	5768	12673	4624	77758	6636	63656	2180	1162	34211	9506	11440	4182	28555	10125	77088	409473
SoudiArabia	3036	17566	7624	2326	2767	23465	3662	7812	4253	93485	4741	73227	1068	1071	16737	7186	9441	8375	38387	7297	74830	408358
Oman	751	4388	3172	300	963	6227	1115	2013	1169	20792	2128	13040	563	407	3934	2279	1302	971	6792	2799	14970	90076
Behrin	699	5813	6753	204	1222	4198	502	1454	456	13764	449	8381	456	255	4967	962	1872	761	2940	1418	12214	69738
Quatar	797	2631	3109	308	916	2781	911	902	615	7628	805	6831	100	202	4200	1212	1060	503	7297	3146	8425	54379
Kuwait	648	4686	2666	252	1249	3598	810	1582	920	8233	403	4553	398	153	4116	1103	1107	202	3154	2550	7242	49626
USA	1128	3199	153	1065	2082	1535	557	649	203	1112	514	621	412	0	3267	53	197	49	99	50	1785	18730
Other Americans	508	1598	302	200	1727	1108	251	502	52	703	198	205	253	0	2011	197	103	0	48	104	1105	11176
Other Asians	53	104	97	52	469	408	260	401	50	1377	103	1123	154	0	609	101	154	153	358	357	1411	7794
Singapore/ Malaysia	151	355	49	0	721	924	202	552	0	765	659	303	52	0	613	257	153	0	103	52	658	6569
Other Europeans	512	1939	100	449	354	308	0	149	53	155	102	248	156	0	660	50	0	49	52	101	409	5845
Africans	101	245	99	0	609	510	250	48	105	557	50	306	806	52	450	0	51	0	150	52	355	4796
UK	156	148	48	0	470	50	0	50	0	313	153	104	0	0	518	51	51	0	101	153	252	2619
Australia	100	155	0	0	102	148	51	53	0	0	0	0	147	0	202	0	0	0	0	0	0	957
Total	12527	55939	32373	7535	20554	70687	14340	28839	12499	226642	16941	172597	6746	3302	76494	22957	26932	15247	88036	28205	200743	1140134

Table 3.6 b

% Country wise Distribution of migrants according to job

Country	Doctor	Nurse	Pharm	Paramedi	Engg	TechExp	Manager	Supervisor	TechOil	Worker	Propr	Salesman	Teacher	Nonteach	Officework	CookChef	HotelBoy	Gardner	Driver	servant	Others	Total
U.A.E	0.95	3.20	2.00	0.58	1.69	6.21	1.41	3.09	1.13	18.99	1.62	15.55	0.53	0.28	8.35	2.32	2.79	1.02	6.97	2.47	18.83	100.00
SoudiArabia	0.74	4.30	1.87	0.57	0.68	5.75	0.90	1.91	1.04	22.89	1.16	17.93	0.26	0.26	4.10	1.76	2.31	2.05	9.40	1.79	18.32	100.00
Oman	0.83	4.87	3.52	0.33	1.07	6.91	1.24	2.23	1.30	23.08	2.36	14.48	0.63	0.45	4.37	2.53	1.45	1.08	7.54	3.11	16.62	100.00
Behrin	1.00	8.34	9.68	0.29	1.75	6.02	0.72	2.08	0.65	19.74	0.64	12.02	0.65	0.37	7.12	1.38	2.68	1.09	4.22	2.03	17.51	100.00
Quatar	1.47	4.84	5.72	0.57	1.68	5.11	1.68	1.66	1.13	14.03	1.48	12.56	0.18	0.37	7.72	2.23	1.95	0.92	13.42	5.79	15.49	100.00
Kuwait	1.31	9.44	5.37	0.51	2.52	7.25	1.63	3.19	1.85	16.59	0.81	9.17	0.80	0.31	8.29	2.22	2.23	0.41	6.36	5.14	14.59	100.00
USA	6.02	17.08	0.82	5.69	11.12	8.20	2.97	3.47	1.08	5.94	2.74	3.32	2.20	0.00	17.44	0.28	1.05	0.26	0.53	0.27	9.53	100.00
Other Americans	4.55	14.30	2.70	1.79	15.45	9.91	2.25	4.49	0.47	6.29	1.77	1.83	2.26	0.00	17.99	1.76	0.92	0.00	0.43	0.93	9.89	100.00
Other Asians	0.68	1.33	1.24	0.67	6.02	5.23	3.34	5.14	0.64	17.67	1.32	14.41	1.98	0.00	7.81	1.30	1.98	1.96	4.59	4.58	18.10	100.00
Singapore/Malasia	2.30	5.40	0.75	0.00	10.98	14.07	3.08	8.40	0.00	11.65	10.03	4.61	0.79	0.00	9.33	3.91	2.33	0.00	1.57	0.79	10.02	100.00
Other Europeans	8.76	33.17	1.71	7.68	6.06	5.27	0.00	2.55	0.91	2.65	1.75	4.24	2.67	0.00	11.29	0.86	0.00	0.84	0.89	1.73	7.00	100.00
Africans	2.11	5.11	2.06	0.00	12.70	10.63	5.21	1.00	2.19	11.61	1.04	6.38	16.81	1.08	9.38	0.00	1.06	0.00	3.13	1.08	7.40	100.00
UK	5.96	5.65	1.83	0.00	17.95	1.91	0.00	1.91	0.00	11.95	5.84	3.97	0.00	0.00	19.78	1.95	1.95	0.00	3.86	5.84	9.62	100.00
Australia	10.45	16.20	0.00	0.00	10.66	15.46	5.33	5.54	0.00	0.00	0.00	0.00	15.36	0.00	21.11	0.00	0.00	0.00	0.00	0.00	0.00	100.00
Total	1.10	4.91	2.84	0.66	1.80	6.20	1.26	2.53	1.10	19.88	1.49	15.14	0.59	0.29	6.71	2.01	2.36	1.34	7.72	2.47	17.61	100.00

Table 3.7a

Distribution of Migrants according to Employment Institutions Category

	District	Agri	Edu	Indu	Comm	Health	Constru	Hotel Restr	Service	Oil Mining	Others	Total
1	Kasaragod	497	199	11931	7954	398	1939	3679	2933	249	9346	39123
2	Kannur	1143	1143	17355	34087	1507	6391	9925	10289	1195	31489	114525
3	Wayanad	212	106	743	1168	425	319	584	159	212	2443	6372
4	Kozhikode	2663	1233	18935	25246	1134	6903	12130	8530	592	30128	107493
5	Malappuram	9156	1893	28030	48081	2916	8644	19232	16419	1279	66085	201734
6	Palakkad	1679	1432	12150	14224	1037	3260	3260	4445	938	17435	59860
7	Thrissur	1798	2298	29722	21979	3197	8392	5795	8342	999	44258	126780
8	Eranakulam	736	1209	12246	8094	6938	7411	2628	3311	1997	15926	60497
9	Idukki	98	49	1962	1374	1913	540	343	1226	49	2060	9615
10	Kottayam	360	1337	9876	4012	10185	3395	1800	2675	1029	11213	45882
11	Alappuzha	707	1716	19785	7874	5905	9438	1666	2372	908	18927	69298
12	Pathanamthitta	673	1972	20538	4377	6397	6445	1635	2213	866	16787	61904
13	Kollam	2709	1771	28180	17450	4063	23284	2917	6980	990	25367	113710
14	Thiruvananthapuram	3239	2664	28523	10553	3291	30874	3343	5224	1306	34322	123340
	Total	25670	19022	239978	206473	49306	117235	68937	75119	12609	325786	1140134

Table 3.7b

Distribution of Migrants according to Employment Institutions Category %

District	Agri	Edu	Indu	Comm	Health	Constru	Hotel Restr	Service	Oil Mining	Others	Total
1 Kasaragod	1.27	0.51	30.50	20.33	1.02	4.96	9.40	7.50	0.64	23.89	100.00
2 Kannur	1.00	1.00	15.15	29.76	1.32	5.58	8.67	8.98	1.04	27.50	100.00
3 Wayanad	3.33	1.66	11.66	18.33	6.67	5.01	9.17	2.50	3.33	38.34	100.00
4 Kozhikode	2.48	1.15	17.62	23.49	1.05	6.42	11.28	7.94	0.55	28.03	100.00
5 Malappuram	4.54	0.94	13.89	23.83	1.45	4.28	9.53	8.14	0.63	32.76	100.00
6 Palakkad	2.80	2.39	20.30	23.76	1.73	5.45	5.45	7.43	1.57	29.13	100.00
7 Thrissur	1.42	1.81	23.44	17.34	2.52	6.62	4.57	6.58	0.79	34.91	100.00
8 Ernakulam	1.22	2.00	20.24	13.38	11.47	12.25	4.34	5.47	3.30	26.33	100.00
9 Idukki	1.02	0.51	20.41	14.29	19.90	5.62	3.57	12.75	0.51	21.42	100.00
10 Kottayam	0.78	2.91	21.52	8.74	22.20	7.40	3.92	5.83	2.24	24.44	100.00
11 Alappuzha	1.02	2.48	28.55	11.36	8.52	13.62	2.40	3.42	1.31	27.31	100.00
12 Pathanamthitta	1.09	3.19	33.18	7.07	10.33	10.41	2.64	3.57	1.40	27.12	100.00
13 Kollam	2.38	1.56	24.78	15.35	3.57	20.48	2.57	6.14	0.87	22.31	100.00
14 Thiruvananthapuram	2.63	2.16	23.13	8.56	2.67	25.03	2.71	4.24	1.06	27.83	100.00
Total	2.25	1.67	21.05	18.11	4.32	10.28	6.05	6.59	1.11	28.57	100.00

Table 3.8 a

Distribution of Employer Status

Country	Government		Semi Govt		Private		Total
	Male	Female	Male	Female	Male	Female	
U.A.E	25083	2079	11506	959	353214	16632	409473
Saudi Arabia	10244	6017	7245	605	369769	14476	408358
Oman	4192	1841	1540	312	77816	4374	90076
Behrin	3238	769	924	201	61473	3134	69738
Quatar	4136	207	1006	105	45827	3098	54379
Kuwait	1888	1620	1214	202	39772	4931	49626
USA	1884	1125	203	103	10437	4977	18730
Other Americans	1568	1001	345	153	5651	2457	11176
Other Asians	206	51	312	49	6819	356	7794
Singapore/ Malaysia	610	206	250	101	4942	459	6569
Other Europeans	711	460	153	100	2787	1634	5845
Africans	657	252	151		3282	453	4796
UK	364	104	259		1484	408	2619
Australia	149	50	52		505	201	957
Total	54931	15784	25160	2889	983778	57591	1140134

Table 3.8 b

Distribution of Employer Status %

Country	Government		Semi Govt.		Private		Total
	Male	Female	Male	Female	Male	Female	
U.A.E	6.13	0.51	2.81	0.23	86.26	4.06	100
SoudiArabia	2.51	1.47	1.77	0.15	90.55	3.54	100
Oman	4.65	2.04	1.71	0.35	86.39	4.86	100
Behrin	4.64	1.10	1.32	0.29	88.15	4.49	100
Quatar	7.61	0.38	1.85	0.19	84.27	5.70	100
Kuwait	3.80	3.26	2.45	0.41	80.14	9.94	100
USA	10.06	6.01	1.08	0.55	55.72	26.57	100
Other Americans	14.03	8.96	3.09	1.37	50.56	21.98	100
Other Asians	2.64	0.65	4.00	0.63	87.49	4.57	100
Singapore/ Malaysia	9.29	3.14	3.81	1.54	75.23	6.99	100
Other Europeans	12.16	7.87	2.62	1.71	47.68	27.96	100
Africans	13.70	5.25	3.15	0.00	68.43	9.45	100
UK	13.90	3.97	9.89	0.00	56.66	15.58	100
Australia	15.57	5.22	5.43	0.00	52.77	21.00	100
Total	4.82	1.38	2.21	0.25	86.29	5.05	100

Table 3.9 a

Distribution of Reason for Migration-Employed Migrants

	District	Employment	Better Emp	Seeking Emp	Education	To join family	Others	Total
1	Kasaragod	31915	4872	398	149	149	1640	39123
2	Kannur	65784	43752	883	156	260	3689	114525
3	Wayanad	5045	1115	53	0.	53	106	6372
4	Kozhikode	81902	22534	296	493	394	1874	107493
5	Malappuram	175545	16777	1330	256	358	7468	201734
6	Palakkad	39462	18225	198	148	296	1531	59860
7	Thrissur	93612	27524	1199	100	500	3846	126780
8	Eranakulam	43993	14874	263	158	578	631	60497
9	Idukki	6819	2306	98	49	245	98	9615
10	Kottayam	33846	9207	257	257	1440	874	45882
11	Alappuzha	53450	13173	404	151	908	1211	69298
12	Pathanamthitta	42856	16161	337	96	1202	1251	61904
13	Kollam	78654	32556	417	52	521	1511	113710
14	Thiruvananthapuram	104064	15516	627	470	731	1933	123340
	Total	856947	238592	6758	2536	7637	27664	1140134

Table 3.9 b

%Distribution of Reason for Migration-Employed Migrants

	District	Employment	Better Emp	Seeking Emp	Education	To join family	Others	Total
1	Kasaragod	81.58	12.45	1.02	0.38	0.38	4.19	100
2	Kannur	57.44	38.2	0.77	0.14	0.23	3.22	100
3	Wayanad	79.17	17.5	0.83	0	0.83	1.67	100
4	Kozhikode	76.19	20.96	0.28	0.46	0.37	1.74	100
5	Malappuram	87.01	8.32	0.66	0.13	0.18	3.7	100
6	Palakkad	65.91	30.45	0.33	0.25	0.5	2.56	100
7	Thrissur	73.84	21.71	0.95	0.08	0.39	3.03	100
8	Eranakulam	72.72	24.59	0.43	0.26	0.96	1.04	100
9	Idukki	70.92	23.98	1.02	0.51	2.55	1.02	100
10	Kottayam	73.76	20.07	0.56	0.56	3.14	1.91	100
11	Alappuzha	77.13	19.01	0.58	0.22	1.31	1.75	100
12	Pathanamthitta	69.23	26.11	0.54	0.16	1.94	2.02	100
13	Kollam	69.16	28.63	0.37	0.05	0.46	1.33	100
14	Thiruvananthapuram	84.37	12.58	0.51	0.38	0.59	1.57	100
	Total	75.16	20.93	0.59	0.22	0.67	2.43	100

Table 3.10 a

Estimation of Employed Migrants-Period stayed in Present Country (Years)

	District	Period stayed in						Total
		upto1	1to5	5to10	10to20	>=20		
1	Kasaragod	5071	16007	8749	6711	2585	39123	
2	Kannur	6963	44687	32165	24318	6391	114525	
3	Wayanad	690	4036	1168	372	106	6372	
4	Kozhikode	31903	37376	20118	15236	2860	107493	
5	Malappuram	13043	89563	55497	35293	8337	201734	
6	Palakkad	6964	25238	16694	9137	1827	59860	
7	Thrissur	28074	43959	28173	20331	6244	126780	
8	Eranakulam	8725	28593	14874	7306	999	60497	
9	Idukki	1864	5053	1864	540	294	9615	
10	Kottayam	3961	20678	11059	7818	2366	45882	
11	Alappuzha	6511	32454	17615	10195	2524	69298	
12	Pathanamthitta	4858	24579	15680	13564	3223	61904	
13	Kollam	12293	55891	29274	13647	2604	113710	
14	Thiruvananthapuram	12172	52868	32076	21366	4858	123340	
	Total	143091	480981	285007	185836	45220	1140134	

Table 3.10 b

% Distribution of Migrants - Period Stayed in Present Country (Years)

District	upto1	1to5	5to10	10to20	>20	Total
1 Kasaragod	12.96	40.92	22.36	17.15	6.61	100
2 Kannur	6.08	39.02	28.09	21.23	5.58	100
3 Wayanad	10.83	63.34	18.33	5.83	1.67	100
4 Kozhikode	29.68	34.77	18.72	14.17	2.66	100
5 Malappuram	6.47	44.4	27.51	17.49	4.13	100
6 Palakkad	11.63	42.17	27.89	15.26	3.05	100
7 Thrissur	22.14	34.67	22.22	16.04	4.93	100
8 Ernakulam	14.42	47.26	24.59	12.08	1.65	100
9 Idukki	19.39	52.55	19.39	5.61	3.06	100
10 Kottayam	8.63	45.07	24.1	17.04	5.16	100
11 Alappuzha	9.4	46.83	25.42	14.71	3.64	100
12 Pathanamthitta	7.85	39.7	25.33	21.91	5.21	100
13 Kollam	10.81	49.16	25.74	12	2.29	100
14 Thiruvananthapuram	9.87	42.86	26.01	17.32	3.94	100
Total	12.64	42.12	24.96	16.31	3.97	100

Table 3.11 a

Distribution of Persons Stayed Abroad

	District	<1year	1to5	5to10	10to20	>20	Total
1	Kasaragod	3480	16306	8849	7805	2684	39123
2	Kannur	6132	43805	32684	25150	6755	114525
3	Wayanad	584	3771	1434	478	106	6373
4	Kozhikode	10256	45660	27218	20414	3945	107493
5	Malappuram	10588	88284	57134	36879	8849	201734
6	Palakkad	5779	24300	17237	10471	2074	59860
7	Thrissur	9091	49053	33169	26525	8942	126780
8	Eranakulam	7464	28435	15505	7884	1209	60497
9	Idukki	1423	5004	1815	981	392	9615
10	Kottayam	3755	20370	11573	7664	2520	45882
11	Alappuzha	5602	30939	18473	11407	2877	69298
12	Pathanamthitta	3800	25252	16258	13612	2982	61904
13	Kollam	9116	52454	32868	16200	3073	113710
14	Thiruvananthapuram	9769	51666	33748	22777	5381	123340
	Total	86838	485296	307965	208245	51790	1140134

Table 3.11 b

% Distribution of Persons Stayed Abroad

District	<1year	1to5	5to10	10to20	>20	Total
Kasaragod	8.89	41.68	22.62	19.95	6.86	100
Kannur	5.35	38.25	28.54	21.96	5.90	100
Wayanad	9.17	59.16	22.50	7.50	1.67	100
Kozhikode	9.54	42.48	25.32	18.99	3.67	100
Malappuram	5.25	43.76	28.32	18.28	4.39	100
Palakkad	9.65	40.59	28.80	17.49	3.47	100
Thrissur	7.17	38.70	26.16	20.92	7.05	100
Eranakulam	12.34	47.00	25.63	13.03	2.00	100
Idukki	14.80	52.04	18.88	10.20	4.08	100
Kottayam	8.18	44.41	25.22	16.70	5.49	100
Alappuzha	8.08	44.65	26.66	16.46	4.15	100
Pathanamthitta	6.14	40.79	26.26	21.99	4.82	100
Kollam	8.02	46.12	28.91	14.25	2.70	100
Thiruvananthapuram	7.92	41.89	27.36	18.47	4.36	100
Total	7.62	42.57	27.01	18.26	4.54	100

Table 3.12

Per 1000-Distribution of Utilization of Earnings

District	Not invested	Land Purchase	House Pur/ Construction	Purchase Commercial Vehicles	Other Investments	Marriage	Education	Employment	Treatment	Other Investments
1 Kasaragod	28	107	191	27	9	82	45	3	109	399
2 Kannur	41	86	145	12	90	115	39	4	59	409
3 Wayanad	51	193	137	56	15	41	61	5	86	355
4 Kozhikode	35	123	167	21	22	113	44	5	78	392
5 Malappuram	57	105	143	19	42	112	36	24	86	376
6 Palakkad	28	115	132	16	51	136	42	28	69	383
7 Thrissur	20	97	151	12	90	135	48	22	70	355
8 Ernakulam	108	141	142	30	60	67	46	19	69	318
9 Idukki	54	118	135	13	94	71	51	3	77	384
10 Kottayam	47	106	129	18	169	51	75	12	63	330
11 Alappuzha	45	124	170	14	87	70	54	13	69	354
12 Pathanamthitta	19	115	149	14	119	31	83	35	75	360
13 Kollam	37	116	160	10	91	80	57	26	101	322
14 Thiruvananthapuram	77	149	136	10	70	76	54	9	79	340
Total	45	114	150	16	71	96	49	17	78	364

Table 3.13

% Distribution of Area of Land Purchased

	District	<10cent	11to50	51to100	101to200	201to500	above500	total	% of persons purchased land
1	Kasaragod	14.89	59.58	10.64	5.32	6.38	3.19	100	11.94
2	Kannur	26.02	57.69	10.03	3.76	1.25	1.25	100	14.47
3	Wayanad	32.35	38.25	8.82	11.76	2.94	5.88	100	28.33
4	Kozhikode	27.37	57.9	10.26	2.89	1.05	0.53	100	17.43
5	Malappuram	22.88	52.67	13.01	6.11	2.82	2.51	100	16.18
6	Palakkad	15.6	54.59	15.14	7.34	5.5	1.83	100	17.99
7	Thrissur	26.09	53.62	12.32	4.35	1.93	1.69	100	16.31
8	Eranakulam	42.29	34.32	8.96	5.97	6.47	1.99	100	17.46
9	Idukki	20.69	34.48	13.79	20.69	6.9	3.45	100	14.80
10	Kottayam	24.06	44.35	12.03	6.77	6.77	6.02	100	14.91
11	Alappuzha	23.83	58.59	9.77	5.08	1.56	1.17	100	18.65
12	Pathanamthitta	27.56	40.99	17.67	9.19	2.12	2.47	100	21.99
13	Kollam	25.56	48.88	16.37	6.05	2.02	1.12	100	20.43
14	Thiruvananthapuram	32.8	55.14	7.98	2.13	1.24	0.71	100	23.89
	Total	26.47	51.95	12.02	5.24	2.57	1.75	100	17.87

Table 3.14

Per 1000-Distribution of Way of Sending Money to Homeland

District	Not Sending	Bank	Friends	Gold	Others	Total
Kasaragod	51	611	265	5	68	1000
Kannur	51	743	156	38	11	1000
Wayanad	109	672	182	0	36	1000
Kozhikode	51	768	164	2	15	1000
Malappuram	57	561	223	31	127	1000
Palakkad	54	696	203	16	31	1000
Thrissur	45	894	42	4	15	1000
Ernakulam	136	804	38	6	16	1000
Idukki	169	754	63	5	10	1000
Kottayam	152	715	66	2	66	1000
Alappuzha	75	783	94	33	15	1000
Pathanamthitta	93	777	77	27	25	1000
Kollam	45	781	125	13	36	1000
Thiruvananthapuram	73	789	108	14	16	1000
Total	66	727	142	19	46	1000

Table 3.15

Per 1000-Distribution of Way of Sending Money to Homeland

Country	Not Sending	Bank	Friends	Gold	Others	Total
Saudi Arabia	49	701	169	22	59	1000
Australia	381	524	95	0	0	1000
Other Americans	277	542	136	19	27	1000
Africans	255	657	49	10	29	1000
Other Asians	61	444	203	77	215	1000
Other Europeans	266	625	47	31	31	1000
U.A.E	67	740	137	16	40	1000
Kuwait	79	786	96	14	24	1000
Oman	48	802	104	18	29	1000
Behrin	64	761	134	13	29	1000
Quatar	40	800	120	15	24	1000
USA	303	554	74	2	67	1000
UK	241	667	37	19	37	1000
Singapore/Malaysia	113	740	87	13	47	1000
Total	66	727	142	19	46	1000

Table 3.16 a

By whom the Migrant got the present Job

	District	Self	Agents	Govt	Others	Total
1	Kasaragod	20382	12826	795	5120	39123
2	Kannur	47805	27956	1143	37621	114525
3	Wayanad	1699	2708	53	1912	6372
4	Kozhikode	44871	28352	1035	33234	107493
5	Malappuram	61482	71354	3069	65829	201734
6	Palakkad	21386	20645	889	16941	59860
7	Thrissur	31171	41661	2997	50952	126780
8	Ernakulam	16977	28855	1682	12982	60497
9	Idukki	1815	4513	540	2747	9615
10	Kottayam	15894	16769	2983	10236	45882
11	Alappuzha	16151	27760	1060	24328	69298
12	Pathanamthitta	17893	25685	1106	17220	61904
13	Kollam	41463	55839	1146	15262	113710
14	Thiruvananthapuram	34740	56629	2978	28994	123340
	Total	373728	421552	21477	323377	1140134

Table 3.16 b

By whom the Migrant got the present Job %

	District	Self	Agents	Government	Others	Total
1	Kasaragod	52.10	32.78	2.03	13.09	100.00
2	Kannur	41.74	24.41	1.00	32.85	100.00
3	Wayanad	26.66	42.50	0.83	30.01	100.00
4	Kozhikode	41.74	26.38	0.96	30.92	100.00
5	Malappuram	30.48	35.37	1.52	32.63	100.00
6	Palakkad	35.73	34.49	1.49	28.30	100.00
7	Thrissur	24.59	32.86	2.36	40.19	100.00
8	Eranakulam	28.06	47.70	2.78	21.46	100.00
9	Idukki	18.88	46.94	5.62	28.57	100.00
10	Kottayam	34.64	36.55	6.50	22.31	100.00
11	Alappuzha	23.31	40.06	1.53	35.11	100.00
12	Pathanamthitta	28.90	41.49	1.79	27.82	100.00
13	Kollam	36.46	49.11	1.01	13.42	100.00
14	Thiruvananthapuram	28.17	45.91	2.41	23.51	100.00
	Total	32.78	36.97	1.88	28.37	100.00

Table 3.17

Per 1000-Distribution - Number of Visa Taken

Country	1	2	3	4	5	Above5	
U.A.E	759	159	44	18	9	12	1000
SoudiArabia	791	151	33	14	6	6	1000
Oman	730	167	48	29	9	18	1000
Behrin	748	163	49	15	13	13	1000
Quatar	762	134	51	20	14	20	1000
Kuwait	726	196	34	11	16	17	1000
USA	826	101	54	14		5	1000
Other Americans	824	99	41	18	9	9	1000
Other Asians	863	85	33			20	1000
Singapore/Malaysia	791	116	47	8	8	31	1000
Other Europeans	861	78	9	17	17	17	1000
Africans	726	137	63	42	21	11	1000
UK	843	137		20			1000
Australia	947	53					1000
Total	769	154	40	17	8	11	1000

Table 3.18 a

Country wise Distribution of present visa according to amount paid

Country	Up to 10000	10001- 20000	20001- 30000	30001- 40000	40001- 50000	Above 50000	Total
U.A.E	108185	36400	55467	52800	75438	81184	409473
Saudi Arabia	61188	32622	52980	64308	83297	113962	408358
Oman	23844	12204	17316	13012	14244	9455	90076
Behrin	15482	7078	10146	9470	12981	14581	69738
Quatar	14949	5456	7829	7239	9296	9610	54379
Kuwait	13287	5251	7371	6503	8310	8902	49626
USA	10659	1367	1479	1763	1811	1650	18730
Other Americans	5156	953	1303	1046	1107	1611	11176
Other Asians	2551	407	664	608	1827	1737	7794
Singapore/ Malaysia	3565	303	710	610	770	612	6569
Other Europeans	3405	303	616	205	759	557	5845
Africans	2037	803	551	200	749	455	4796
UK	1301	154	203	205	450	307	2619
Australia	456	48	101		98	254	957
Total	266066	103349	156735	157968	211138	244878	1140134

Table 3.18 b

Country wise Distribution of present visa according to amount paid %

Country	Up to 10000	10001- 20000	20001- 30000	30001- 40000	40001- 50000	Above 50000	Total
U.A.E	26.42	8.89	13.55	12.89	18.42	19.83	100.00
Saudi Arabia	14.98	7.99	12.97	15.75	20.40	27.91	100.00
Oman	26.47	13.55	19.22	14.45	15.81	10.50	100.00
Behrin	22.20	10.15	14.55	13.58	18.61	20.91	100.00
Quatar	27.49	10.03	14.40	13.31	17.09	17.67	100.00
Kuwait	26.77	10.58	14.85	13.10	16.75	17.94	100.00
USA	56.91	7.30	7.90	9.41	9.67	8.81	100.00
Other Americans	46.13	8.53	11.66	9.36	9.91	14.41	100.00
Other Asians	32.73	5.22	8.52	7.80	23.44	22.29	100.00
Singapore/ Malaysia	54.27	4.61	10.81	9.29	11.72	9.32	100.00
Other Europeans	58.25	5.18	10.54	3.51	12.99	9.53	100.00
Africans	42.47	16.74	11.49	4.17	15.62*	9.49	100.00
UK	49.68	5.88	7.75	7.83	17.18	11.72	100.00
Australia	47.65	5.02	10.55	0.00	10.24	26.54	100.00
Total	23.34	9.06	13.75	13.86	18.52	21.48	100.00

Table 3.19 a

Country wise Distribution of Time taken to get present visa ESTIMATED

Country	Below 1month	1to3 months	3to6 months	6to12 months	Above 1year	Total
U.A.E	218715	114300	46172	23080	7206	409473
SaudiArabia	205229	128617	49122	20492	4899	408358
Oman	45023	26660	11917	4982	1493	90076
Behrin	35987	20498	8896	2878	1479	69738
Quatar	29390	14439	6729	2966	855	54379
Kuwait	25868	14382	5859	2620	898	49626
USA	10687	4467	2750	672	154	18730
Other Americans	6846	2403	1265	610	53	11176
Other Asians	3150	2863	1578	202	0	7794
Singapore/Malaysia	3873	1427	907	260	102	6569
Other Europeans	2680	1885	925	158	196	5845
Africans	2781	1357	457	101	101	4796
UK	1652	763	154	50	0	2619
Australia	502	354	0	101	0	957
Total	592383	334415	136731	59170	17435	1140134

Table 3.19 b

Country wise Distribution of Time taken to get present visa %

Country	Below 1 month	1 to 3 months	3 to 6 months	6 to 12 months	Above 1 year	Total
U.A.E	53.41	27.91	11.28	5.64	1.76	100.00
Saudi Arabia	50.26	31.50	12.03	5.02	1.20	100.00
Oman	49.98	29.60	13.23	5.53	1.66	100.00
Behrin	51.60	29.39	12.76	4.13	2.12	100.00
Quatar	54.05	26.55	12.37	5.45	1.57	100.00
Kuwait	52.13	28.98	11.81	5.28	1.81	100.00
USA	57.06	23.85	14.68	3.59	0.82	100.00
Other Americans	61.26	21.50	11.32	5.46	0.47	100.00
Other Asians	40.42	36.73	20.25	2.59	0.00	100.00
Singapore /Malaysia	58.96	21.72	13.81	3.96	1.55	100.00
Other Europeans	45.85	32.25	15.83	2.70	3.35	100.00
Africans	57.99	28.29	9.53	2.11	2.11	100.00
UK	63.08	29.13	5.88	1.91	0.00	100.00
Australia	52.46	36.99	0.00	10.55	0.00	100.00
Total	51.96	29.33	11.99	5.19	1.53	100.00

Table 3.20 a

Problems faced in getting present Visa Estimated

Country	Visa Stamping Delay	Travel Agents	Delay but not Specific	Not Known	No Delay	Total
U.A.E	3298	3997	249723	140330	12124	409473
Soudi Arabia	3635	5728	248303	135665	15026	408358
Oman	567	805	50889	35260	2555	90076
Behrin	605	407	41632	25526	1569	69738
Quatar	304	849	31762	19491	1973	54379
Kuwait	357	404	30646	17066	1153	49626
USA	103	49	13250	4758	569	18730
Other Countries	361	149	25510	12724	1012	39756
Total	9231	12388	691715	390820	35981	1140134

Table 3.20 b

Problems faced in getting present Visa Estimated - (%)

Country	Visa Stamping Delay	Travel Agents	Delay but not Specific	Not Known	No Delay	Total
U.A.E	0.81	0.98	60.99	34.27	2.96	100.00
Soudi Arabia	0.89	1.40	60.81	33.22	3.68	100.00
Oman	0.63	0.89	56.50	39.14	2.84	100.00
Behrin	0.87	0.58	59.70	36.60	2.25	100.00
Quatar	0.56	1.56	58.41	35.84	3.63	100.00
Kuwait	0.72	0.81	61.75	34.39	2.32	100.00
USA	0.55	0.26	70.74	25.40	3.04	100.00
Other Countries	0.91	0.37	64.17	32.01	2.55	100.00
Total	0.81	1.09	60.67	34.28	3.16	100.00

Table 3.21 a

Country wise Distribution - Benefits ESTIMATED

	Country	Number and Percentage of Persons Received Benefits as per Agreement					Family Accommodation	%
		Job	%	Salary	%	Other Benefits		
1	Saudi Arabia	337860	82.74	261912	64.14	88118	23058	5.65
2	U.A.E	356307	87.02	305371	74.58	112449	48646	11.88
3	Kuwait	43121	86.89	37015	74.59	15176	7022	14.15
4	Oman	78306	86.93	63851	70.89	26176	10306	11.44
5	Behrin	59129	84.79	47543	68.17	17423	9392	13.47
6	Quatar	46810	86.08	39403	72.46	14042	5006	9.21
7	USA	16459	87.88	15503	82.78	12467	13444	71.78
8	UK	2366	90.31	2113	80.68	1080	1082	41.31
9	Singapore/Mali	5546	84.43	4941	75.22	2808	2300	35.01
10	Australia	957	100.00	905	94.57	649	705	73.59
11	Other American	10580	94.67	10019	89.65	7224	7442	66.59
12	Africans	4234	88.28	3826	79.77	2473	1954	40.74
13	Other Asians	6778	86.96	5344	68.57	2284	1631	20.93
14	Other Europeans	5233	89.54	4820	82.48	3552	4023	68.83
	Total	973686	85.40	802566	70.39	305920	136009	11.93

Table 3.21 b

Qualification wise Distribution - Benefits Estimated

Qualification	Number and Percentage of Persons Received Benefits as per Agreement							Family accommodation	%
	Job	%	Salary	%	Other Benefits	%	%		
Non Tech.	773681	83.95	628704	68.22	201400	21.85	74996	8.14	
Certificate and Equivalent	112139	90.27	92596	74.54	48293	38.87	20881	16.81	
Diploma and Equivalent	53172	93.89	48953	86.44	31963	56.44	19205	33.91	
Engg Degree and Eq	18352	91.83	17333	86.73	12827	64.18	11494	57.51	
Medical Degree and Eq	5812	92.58	5449	86.80	5003	79.69	4145	66.02	
Other Qualification	10530	91.95	9532	83.24	6433	56.17	5289	46.18	
Total	973686	85.40	802566	70.39	305920	26.83	136009	11.93	

Table 3.21 c

Job wise Distribution - Benefits ESTIMATED

Job	Number and Percentage of Persons Received Benefits as per Agreement							Family Accommodation	%
	Job	%	Salary	%	Other Benefits	%	Family Accommodation		
Doctor	11061	88.29	9750	77.83	5892	47.03	4327	34.54	
Nurse	50453	90.19	43754	78.22	23304	41.66	14311	25.58	
Pharm	27028	83.49	20355	62.88	4784	14.78	2950	9.11	
ParaMedi	6723	89.22	5970	79.23	3580	47.51	2627	34.86	
Engg	19520	94.97	18309	89.08	13658	66.45	12015	58.46	
TechExp	65206	92.25	55341	78.29	28555	40.40	12048	17.04	
Manager	13174	91.87	12055	84.07	8370	58.37	6906	48.16	
Supervisor	26418	91.61	24031	83.33	14861	51.53	8023	27.82	
TechOil	11636	93.09	9701	77.61	4833	38.67	2288	18.31	
Worker	190307	83.97	144421	63.72	43727	19.29	8001	3.53	
Propr	14351	84.72	13332	78.70	4550	26.86	3561	21.02	
Salesman	146472	84.86	126000	73.00	30140	17.46	7285	4.22	
Teacher	6078	90.10	5520	81.83	3752	55.62	3542	52.51	
Nonteach	2996	90.73	2287	69.26	914	27.67	554	16.78	
Officework	69701	91.12	65675	85.86	38496	50.33	25013	32.70	
CookChef	19870	86.56	17023	74.15	5384	23.45	511	2.23	
HotelBoy	21651	80.39	18092	67.18	4414	16.39	861	3.20	
Gardner	10299	67.55	7228	47.41	1635	10.72	356	2.33	
Driver	78008	88.61	61734	70.12	21083	23.95	5045	5.73	
DServant	23272	82.51	18441	65.38	6516	23.10	564	2.00	
Others	159463	79.44	123546	61.54	37474	18.67	15220	7.58	
Total	973686	85.40	802566	70.39	305920	26.83	136009	11.93	

Table 3.22 a

% of member of Norka Insurance Scheme

	District	Norka Insurance Scheme		Family	
		Member	Not Member	Included	Not Included
1	Kasaragod	3.30	96.70	1.91	98.09
2	Kannur	4.36	95.64	2.09	97.91
3	Wayanad	1.67	98.33	0.00	100.00
4	Kozhikode	2.94	97.06	1.10	98.90
5	Malappuram	2.18	97.82	1.32	98.68
6	Palakkad	3.80	96.20	1.07	98.93
7	Thrissur	5.00	95.00	1.38	98.62
8	Eranakulam	8.43	91.57	5.91	94.09
9	Idukki	4.59	95.41	4.08	95.92
10	Kottayam	12.78	87.22	9.08	90.92
11	Alappuzha	6.34	93.66	4.30	95.70
12	Pathanamthitta	7.85	92.15	4.35	95.65
13	Kollam	5.63	94.37	3.34	96.66
14	Thiruvananthapuram	4.53	95.47	3.05	96.95
	Total	4.84	95.16	2.68	97.32

Table 3.22 b

Per 1000-Distribution of Reason for Not Joining the Scheme

District	Scheme is not attractive	Already joined Ill r Scheme	High Premium Rate	Ill r Scheme available in Company	Other Reasons
Kasaragod	127	109	59	9	696
Kannur	8	33	5	6	948
Wayanad	10	20	0	20	950
Kozhikode	9	26	4	4	957
Malappuram	73	64	55	35	773
Palakkad	34	62	6	22	876
Thrissur	57	29	11	15	888
Eranakulam	12	57	10	19	902
Idukki	85	69	0	16	830
Kottayam	29	52	1	33	885
Alappuzha	38	29	20	34	879
Pathanamthitta	30	78	11	34	847
Kollam	97	78	71	38	716
Thiruvananthapuram	45	101	14	13	827
Total	50	58	27	23	842

Table 3.22 c

From Where the application form received

	District	Not Stated	Norka Dept	Foreign Kerala Assn	New India Assurance	Others	Total
1	Kasaragod	94.66	4.76	11.90	45.24	38.10	100.00
2	Kannur	95.83	13.04	30.43	14.13	42.39	100.00
3	Wayanad	98.33	50.00	50.00	0.00	0.00	100.00
4	Kozhikode	97.43	8.93	33.93	30.36	26.79	100.00
5	Malappuram	95.87	16.56	24.54	19.02	39.88	100.00
6	Palakkad	96.37	15.91	29.55	2.27	52.27	100.00
7	Thrissur	96.49	20.22	35.96	6.74	37.08	100.00
8	Eranakulam	84.97	4.62	41.04	7.51	46.82	100.00
9	Idukki	91.33	11.76	29.41	35.29	23.53	100.00
10	Kottayam	87.67	5.45	28.18	28.18	38.18	100.00
11	Alappuzha	93.59	10.23	26.14	18.18	45.45	100.00
12	Pathanamthitta	91.84	10.48	7.62	19.05	62.86	100.00
13	Kollam	91.57	13.04	35.33	20.11	31.52	100.00
14	Thiruvananthapuram	94.62	12.60	22.83	29.13	35.43	100.00
	Total	94.24	11.46	28.64	19.12	40.79	100.00

Table 3.22 d

Per 1000 of From Where the details of NORKA Insurance Scheme got

District	Not Stated	News Paper	Radio/TV	Govt/Circular	Foreign Kerala Assn	Agents	Others	Total
Kasaragod	942	1	1	3	10	41	3	1000
Kannur	951	9	0	4	15	17	3	1000
Wayanad	975	8	8	0	8	0	0	1000
Kozhikode	922	44	4	6	10	7	8	1000
Malappuram	904	38	22	5	4	7	21	1000
Palakkad	950	12	1	1	12	16	8	1000
Thrissur	944	8	2	2	18	9	16	1000
Eranakulam	829	14	4	3	62	41	48	1000
Idukki	704	36	31	0	5	31	194	1000
Kottayam	841	28	6	22	47	27	29	1000
Alappuzha	913	16	7	7	18	6	33	1000
Pathanamthitta	894	23	4	16	12	19	33	1000
Kollam	869	24	6	22	23	15	41	1000
Thiruvananthapuram	919	22	8	8	14	17	12	1000
State	909	23	7	8	17	15	22	1000

Table 3.22 e

Benefits to be included in the NORKA Insurance Scheme

	District	Awareness Needed	Facility, to Remit Premium Thru NRA	Minimise Premium Amount	Enhance Maturity Value	Include Dependant Parents	Others	Total
1	Kasaragod	83	167	167	333	0	250	1000
2	Kannur	241	0	103	17	190	448	1000
3	Wayanad	400	0	0	200	200	200	1000
4	Kozhikode	23	0	34	11	264	667	1000
5	Malappuram	0	0	46	29	12	913	1000
6	Palakkad	167	0	0	333	167	333	1000
7	Thrissur	135	0	154	38	154	519	1000
8	Eranakulam	24	12	0	60	193	711	1000
9	Idukki	617	0	0	21	128	234	1000
10	Kottayam	14	0	41	164	205	575	1000
11	Alappuzha	673	10	10	19	58	231	1000
12	Pathanamthitta	804	3	17	26	82	68	1000
13	Kollam	437	3	204	65	214	78	1000
14	Thiruvananthapuram	0	10	19	10	0	961	1000
	Total	446	5	61	42	118	328	1000

Table 3.23 a

Disease % and Help Received

Country	Affect disease % to Total	% of Help received	Met with accident % to Total	% of Help received
Saudi Arabia	2.91	31.76	1.69	50.37
Australia	5.26	0	5.26	0
Other Americans	2.25	100	2.25	100
Africans	1.05	100	3.16	66.67
Other Asians	1.96	0	0.65	100
Other Europeans	1.74	50	0.87	100
U.A.E	1.96	41.77	1.20	52.58
Kuwait	2.75	51.85	1.32	69.23
Oman	2.71	35.42	2.49	45.45
Behrin	2.82	30.77	1.09	53.33
Quatar	3.15	47.06	1.11	50
USA	0.82	33.33	2.72	80
UK	3.92	50	0.00	0
Singapore/ Malaysia	1.55	50	0.78	0
Total	2.49	37.46	1.51	52.96

Table 4.1

Number of Returnees with Reason for Return - (District wise)

	Districts	Retirement	No Life Security	Retrenchment	Sent Back	ill Health	Education of Children	Remigration for better Employment	Escape From Calamities	To join Duty in Home	Other Reasons	Total
1	Kasaragod	547	2138	6512	5021	2486	249	1342	199	398	2237	21129
2	Kannur	1299	6495	5664	5872	4988	624	3118	676	1039	6963	36738
3	Wayanad	319	797	266	425	584	53	319			637	3400
4	Kozhikode	1529	8629	3550	8432	9171	789	3353	1183	1282	11390	49308
5	Malappuram	1534	12327	9053	22864	17493	307	5473	1432	1534	18670	90687
6	Palakkad	1284	2124	2173	3161	4149	296	2667	494	938	7655	24941
7	Thrissur	1898	3946	9441	4995	9641	699	4046	1299	949	16934	53848
8	Ernakulam	2050	5519	3942	1629	3469	1261	3679	1051	1209	7937	31746
9	Idukki	196	294	196	147	589	196	834	98	49	1325	3924
10	Kottayam	1543	1492	1286	411	2366	1543	1646	309	772	5298	16666
11	Alappuzha	555	3483	5552	3483	3634	555	2271	606	656	5804	26599
12	Pathanamthitta	1010	2645	5243	1251	4281	1491	1539	1010	433	4858	23761
13	Kollam	5574	9584	12918	14220	9949	938	4063	1094	886	8803	68029
14	Thiruvananthapuram	4179	12537	15413	19330	15775	1936	4074	1878	1044	16300	92466
	Total	23517	72010	81209	91241	88575	10937	38424	11329	11189	114811	543242

Table 4.2

Number of Returnees with Reason for Return - (Country wise)

Country	Retirement	No life security	Retrenchment	Sent back	ill Health	Education of children	Remigration for better Employment	Escape from calamities	To join duty in home	Other reasons	Total
1 Saudi Arabia	8667	37340	34335	47813	34680	2924	19371	4295	5337	53836	248598
2 U.A.E	6970	16301	26048	24461	31789	2552	9700	1634	2448	30690	152593
3 Oman	2313	6411	8406	6870	8199	1458	3626	771	1121	10933	50108
4 Behrin	1480	4020	5146	5139	5052	514	2224	813	405	7057	31850
5 Kuwait	979	3974	2379	2478	2128	865	1170	2798	304	3695	20770
6 Qatar	709	1982	3209	2222	3506	448	1366	310	458	4872	19082
7 Other Asians	358	964	405	871	461	151	406	304	309	1167	5396
8 Singapore/Malesia	717	355	463	464	1643	253	104	151	52	611	4813
9 Africans	404	253	362	511	405	616	201	204	401	761	4118
10 Other Countries	920	410	456	412	712	1156	256	49	354	1189	5914
	23517	72010	81209	91241	88575	10937	38424	11329	11189	114811	543242

Table 4.3

Age wise Distribution of Returnees-Estimated (Country wise)

	Country	<30	30-39	40-49	50-59	60-69	>=70	Total
1	Saudi Arabia	42477	107412	70416	22163	5566	564	248598
2	U.A.E	20640	46315	48551	26470	9038	1579	152593
3	Oman	3911	16339	18999	7692	2555	612	50108
4	Behrin	3792	10422	10889	4532	1811	404	31850
5	Kuwait	2024	7259	6945	2875	1105	562	20770
6	Quatar	2107	5668	6836	3210	1108	153	19082
7	Other Asians	1124	1320	1539	750	511	152	5396
8	Singapore/Malesi	311	817	313	464	1675	1233	4813
9	Africans	100	555	1326	1527	457	153	4118
10	Other Countries	563	1289	2073	1171	458	360	5914
	Total	77049	197396	167887	70854	24284	5772	543242

Table 4.4

Age wise Distribution of Returnees-Estimated (District wise)

	District	<30	30-39	40-49	50-59	60-69	>=70	Total
1	Kasaragod	4873	7954	6164	1442	547	149	21129
2	Kannur	5144	13407	11743	4521	1351	572	36738
3	Wayanad	531	2018	745	106	0	0	3400
4	Kozhikode	8087	18836	13707	6114	2022	542	49308
5	Malappuram	16674	30791	27723	11202	3939	358	90687.
6	Palakkad	4346	9335	7210	3161	741	148	24941
7	Thrissur	6294	16734	16335	9539	4446	500	53848
8	Eranakulam	4468	11826	10092	3627	1260	473	31746
9	Idukki	687	1962	1030	196	49	0	3924
10	Kottayam	1749	6378	5247	2006	875	411	16666
11	Alappuzha	2978	10650	9337	2826	657	151	26599
12	Pathanamthitta	2020	6878	8465	4666	1299	433	23761
13	Kollam	9116	26253	21252	8335	2344	729	68029
14	Thiruvananthapuram	10082	34374	28837	13113	4754	1306	92466
	Total	77049	197396	167887	70854	24284	5772	543242

Table 4.5

% Distribution of Returnees who were employed after return

	District	Employed	Not Employed	Total
1	Kasaragod	60.24	39.76	100
2	Kannur	60.11	39.89	100
3	Wayanad	57.81	42.19	100
4	Kozhikode	65.9	34.1	100
5	Malappuram	68.81	31.19	100
6	Palakkad	66.53	33.47	100
7	Thrissur	57.79	42.21	100
8	Eranakulam	61.42	38.58	100
9	Idukki	56.25	43.75	100
10	Kottayam	51.23	48.77	100
11	Alappuzha	66.79	33.21	100
12	Pathanamthitta	51.42	48.58	100
13	Kollam	67.61	32.39	100
14	Thiruvananthapuram	73.62	26.38	100
	Total	65.03	34.97	100

Table 4.6

Per 1000-Distribution of Returnees according to present employment status

	District	Govt/ SemiGovt.	Co-Op	Private	Self Employed	Social & Political	Other Sectors	Total
1	Kasaragod	25	4	432	275	4	258	1000
2	Kannur	26	7	273	230	2	462	1000
3	Wayanad	29	29	114	200	0	629	1000
4	Kozhikode	25	8	172	162	3	631	1000
5	Malappuram	19	8	196	234	8	535	1000
6	Palakkad	28	6	194	333	12	426	1000
7	Thrissur	31	7	186	358	5	414	1000
8	Eranakulam	47	6	175	400	3	369	1000
9	Idukki	67	0	178	667	0	89	1000
10	Kottayam	55	37	232	354	6	317	1000
11	Alappuzha	46	6	227	316	0	405	1000
12	Pathanamthitta	32	8	217	237	12	494	1000
13	Kollam	33	10	170	505	2	279	1000
14	Thiruvananthapuram	32	12	65	306	4	581	1000
	State Total	31	9	179	312	5	464	1000

Table 4.7

% Distribution of Returnees who had got total benefits

	District	who got	do not got	Total
1	Kasaragod	16.00	84.00	100
2	Kannur	22.77	77.23	100
3	Wayanad	14.06	85.94	100
4	Kozhikode	11.10	88.90	100
5	Malappuram	12.86	87.14	100
6	Palakkad	24.55	75.45	100
7	Thrissur	21.52	78.48	100
8	Eranakulam	29.80	70.20	100
9	Idukki	27.50	72.50	100
10	Kottayam	36.73	63.27	100
11	Alappuzha	26.57	73.43	100
12	Pathanamthitta	39.68	60.32	100
13	Kollam	16.31	83.69	100
14	Thiruvananthapuram	18.31	81.69	100
	Total	19.96	80.04	100

Table 4.8

Percentage Distribution of Period Taken to get Benefit

	District	Up To One Month	1 - 2 Months	2 - 3 Months	3 - 6 Months	6 - 12 Months	Above 12	Total
1	Kasaragod	42.10	31.58	10.53	5.26	10.53	0.00	100.00
2	Kannur	58.00	14.00	10.00	6.00	10.00	2.00	100.00
3	Wayanad	40.00	40.00	20.00	0.00	0.00	0.00	100.00
4	Kozhikode	46.86	3.13	9.38	15.62	15.63	9.38	100.00
5	Malappuram	34.78	15.94	13.04	27.54	5.80	2.90	100.00
6	Palakkad	52.50	12.50	5.00	12.50	12.50	5.00	100.00
7	Thrissur	67.65	5.88	1.47	8.82	13.24	2.94	100.00
8	Eranakulam	33.89	11.29	8.06	19.35	19.35	8.06	100.00
9	Idukki	20.00	40.00	0.00	20.00	20.00	0.00	100.00
10	Kottayam	38.47	2.56	12.82	20.51	20.51	5.13	100.00
11	Alappuzha	30.31	9.09	18.18	21.21	15.15	6.06	100.00
12	Pathanamthitta	64.17	4.48	11.94	14.93	4.48	0.00	100.00
13	Kollam	66.66	9.09	7.58	10.61	3.03	3.03	100.00
14	Thiruvananthapuram	80.00	5.00	1.25	8.75	3.75	1.25	100.00
	Total	54.02	9.76	8.35	14.33	10.08	3.46	100.00

Table 4.9

% Distribution of Persons Who got Customs Benefits while returned in TR

	District	Who got Customs Benefits	Who did not get Customs Benefits
01	Kasaragod	22.59	77.41
02	Kannur	28.85	71.15
03	Wayanad	37.50	62.50
04	Kozhikode	33.20	66.80
05	Malappuram	27.13	72.87
06	Palakkad	35.64	64.36
07	Thirissur	20.96	79.04
08	Eranakulam	34.27	65.73
09	Idukki	45.00	55.00
10	Kottayam	52.78	47.22
11	Alappuzha	35.29	64.71
12	Pathanamthitta	41.70	58.30
13	Kollam	31.85	68.15
14	Thiruvananthapuram	38.02	61.98
	State	32.26	67.74

Table 4.10

% Distribution of Difficulties experienced

District	Difficulty Breakup Percentage										No Difficulty
	Imposed Excise Duty	Delayed	Loss and Damage made	Bros Paid	Toughen from customs	Un Specified	Total				
1 Kasaragod	13.64	4.55	0.00	9.09	0.00	72.72	100.00	95.06			
2 Kannur	10.34	5.17	0.00	12.07	- 5.17	67.25	100.00	92.08			
3 Wayanad	0.00	0.00	10.00	10.00	10.00	70.00	100.00	85.94			
4 Kozhikode	9.72	0.00	5.56	6.94	11.11	66.67	100.00	93.50			
5 Malappuram	8.24	1.18	3.53	10.59	2.35	74.11	100.00	95.21			
6 Palakkad	14.00	4.00	2.00	10.00	2.00	68.00	100.00	90.50			
7 Thrissur	18.69	4.67	0.93	11.21	3.74	60.76	100.00	90.45			
8 Ernakulam	18.82	0.00	5.88	17.65	4.71	52.94	100.00	85.93			
9 Idukki	5.00	5.00	20.00	30.00	10.00	30.00	100.00	77.50			
10 Kottayam	16.67	2.38	4.76	28.57	4.76	42.86	100.00	87.35			
11 Alappuzha	20.24	5.95	14.29	17.86	2.38	39.28	100.00	86.15			
12 Pathanamthitta	32.26	6.45	3.23	6.45	1.08	50.53	100.00	81.78			
13 Kollam	17.65	0.98	1.96	3.92	2.94	72.55	100.00	92.19			
14 Thiruvananthapuram	15.03	3.92	2.61	5.23	1.31	71.90	100.00	91.58			
Total	16.48	3.26	4.27	10.89	3.56	61.54	100.00	91.13			

Table 4.11

% Distribution of Returnees _ Whether Earnings Send to House Hold

	District	Send	Not Send	Total
1	Kasaragod	69.88	30.12	100
2	Kannur	84.72	15.28	100
3	Wayanad	87.50	12.50	100
4	Kozhikode	86.20	13.80	100
5	Malappuram	82.01	17.99	100
6	Palakkad	90.69	9.31	100
7	Thrissur	92.67	7.33	100
8	Eranakulam	92.05	7.95	100
9	Idukki	80.00	20.00	100
10	Kottayam	92.28	7.72	100
11	Alappuzha	91.65	8.35	100
12	Pathanamthitta	95.14	4.86	100
13	Kollam	88.28	11.72	100
14	Thiruvananthapuram	93.16	6.84	100
	Total	88.20	11.80	100

Table 4.12

% Distribution - Way in which money was send

	District	Bank	Friends	Gold	Other Methods	Total
1	Kasaragod	63.93	30.02	0.24	5.81	100
2	Kannur	79.78	14.07	4.37	1.78	100
3	Wayanad	79.68	15.63	3.13	1.56	100
4	Kozhikode	83.98	14.6	0.2	1.22	100
5	Malappuram	60.3	24.09	2.71	12.9	100
6	Palakkad	76.77	17.02	1.95	4.26	100
7	Thrissur	93.28	4.13	0.86	1.73	100
8	Eranakulam	90.82	5.44	2.55	1.19	100
9	Idukki	88.24	7.35	0	4.41	100
10	Kottayam	92.09	2.53	2.53	2.85	100
11	Alappuzha	94.29	4.33	0.79	0.59	100
12	Pathanamthitta	88.22	5.13	4.75	1.9	100
13	Kollam	82.71	12.18	1.68	3.43	100
14	Thiruvananthapuram	87.13	10.13	1.13	1.61	100
	Total	80.42	13.36	1.89	4.33	100

Table 4.13

% Distribution of Returnees Whether there was earnings while in abroad

	Country	Yes	No	Total
1	Saudi Arabia	66.02	33.98	100
2	U.A.E	69.32	30.68	100
3	Kuwait	74.15	25.85	100
4	Oman	71.38	28.62	100
5	Behrin	71.11	28.89	100
6	Quatar	72.56	27.44	100
7	USA	64.71	35.29	100
8	UK	71.43	28.57	100
9	South Africa	81.82	18.18	100
10	Germany	85.71	14.29	100
11	Canada	75.00	25.00	100
12	Singapore	82.14	17.86	100
13	Malaysia	71.05	28.95	100
14	Sri Lanka	66.67	33.33	100
15	Mali	69.23	30.77	100
16	Nigeria	73.33	26.67	100
17	Other Americans	79.17	20.83	100
18	Other Africans	86.36	13.64	100
19	Other Asians	80.39	19.61	100
20	Other Europeans	76.19	23.81	100
21	Iran	86.96	13.04	100
22	Others	63.64	36.36	100
	Total	68.75	31.25	100

Table 4.14

Per1000 Distribution of persons utilized their earnings in different purposes

	District	Purchase of Land	House Construction or Purchase	Comm. Vehicles/ Buildings	Trade & Commerce	Other Deposit	Marriage	Education	Treatment	Other Expenses	Total
01	Kasaragod	167	219	80	35	9	162	40	113	664	1000
02	Kannur	195	246	34	38	147	157	57	89	651	1000
03	Wayanad	313	266	125	47	0	125	16	63	484	1000
04	Kozhikode	197	261	40	37	32	178	55	121	667	1000
05	Malappuram	212	275	45	42	76	185	48	149	598	1000
06	Palakkad	269	323	79	81	81	202	53	133	644	1000
07	Thrissur	247	345	55	60	86	238	82	152	619	1000
08	Ernakulam	265	280	58	66	71	147	89	136	498	1000
09	Idukki	325	250	75	25	50	100	38	50	463	1000
10	Kottayam	296	361	59	65	130	123	114	114	519	1000
11	Alappuzha	237	317	51	23	110	146	118	163	636	1000
12	Pathanamthitta	328	401	69	43	160	105	271	136	605	1000
13	Kollam	254	279	26	41	119	151	98	182	613	1000
14	Thiruvananthapuram	298	284	45	31	101	179	98	160	591	1000
	State	247	291	49	44	91	172	85	143	608	1000

Table 4.15
% Distribution of - Area of Land Purchased (in Cents)

	District	<10Cent	10 to50	50-100	100 to 200	200 to 500	>=500	Total
1	Kasaragod	8.57	51.43	22.86	8.57	5.71	2.86	100
2	Kannur	21.71	52.71	13.95	6.98	4.65	0	100
3	Wayanad	23.53	52.95	5.88	11.76	5.88	0	100
4	Kozhikode	38.55	47.6	7.23	3.01	2.41	1.2	100
5	Malappuram	21.12	50.93	9.94	10.25	6.52	1.24	100
6	Palakkad	16.24	43.6	17.09	17.09	5.13	0.85	100
7	Thrissur	20.25	49.36	16.46	8.02	4.64	1.27	100
8	Eranakulam	37.78	42.23	2.22	11.11	4.44	2.22	100
9	Idukki	27.27	36.36	13.64	9.09	4.55	9.09	100
10	Kottayam	18.89	39.99	5.56	8.89	15.56	11.11	100
11	Alappuzha	34.51	51.34	7.08	3.54	0.88	2.65	100
12	Pathanamthitta	17.39	37.89	22.36	14.91	6.83	0.62	100
13	Kollam	20	52.21	16.61	8.81	1.69	0.68	100
14	Thiruvananthapuram	30.21	51.04	13.33	3.33	1.67	0.42	100
	Total	24.97	48.51	12.85	8.02	4.18	1.47	100

Table 4.16

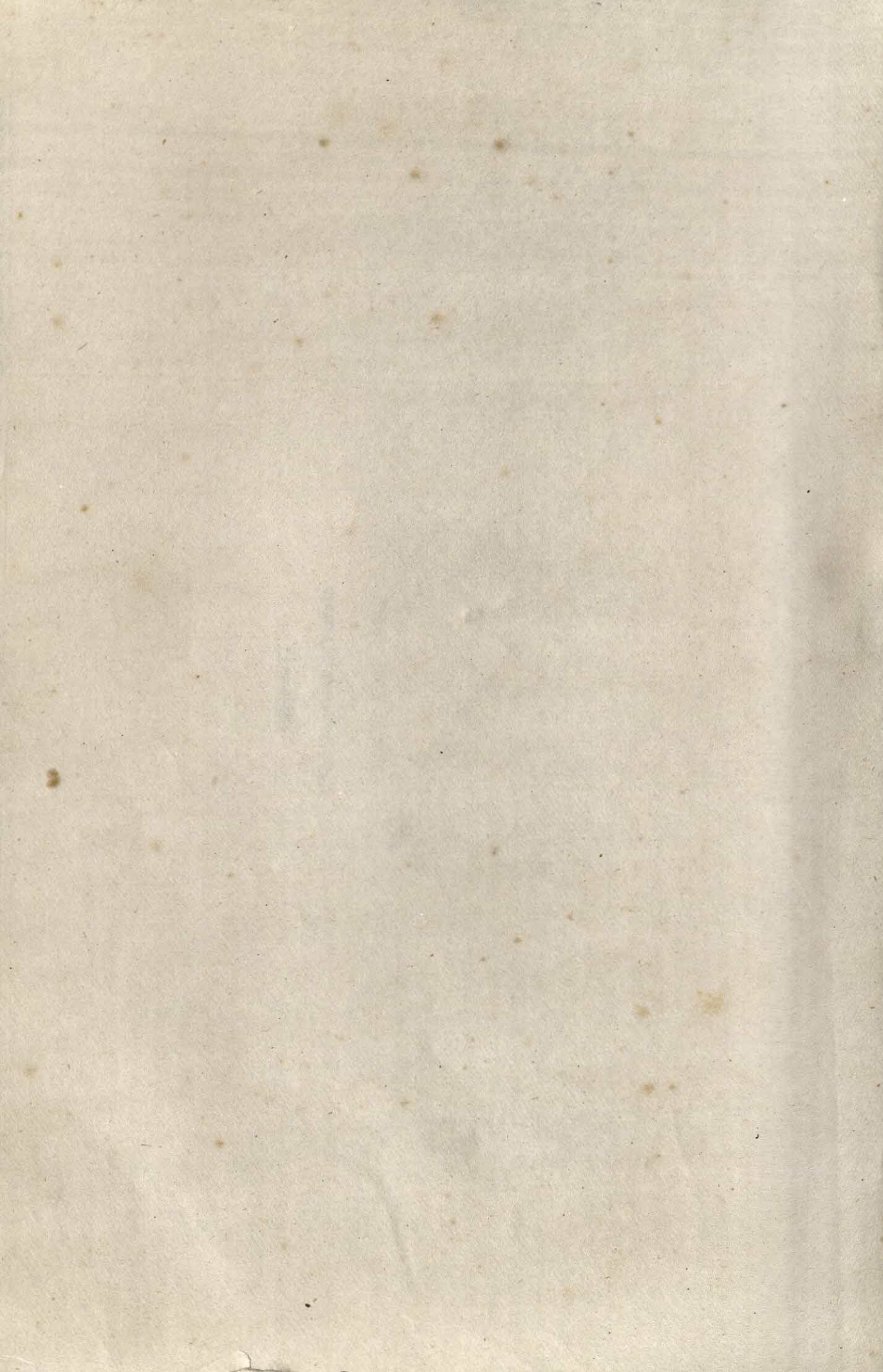
Per 1000 Distribution - Expecting Help for Starting Enterprises

	District	Financial	Technical	Information/Training	Marketing/Export Import Licence	Electricity	Others	Not Reported
01	Kasaragod	520	141	120	26	19	21	468
02	Kannur	549	68	99	10	10	55	440
03	Wayanad	516	47	0	16	16	0	469
04	Kozhikode	569	46	23	8	12	72	424
05	Malappuram	625	78	96	23	51	138	336
06	Palakkad	562	87	61	28	38	63	406
07	Thrissur	651	65	67	16	32	101	322
08	Eranakulam	776	73	71	25	56	104	205
09	Idukki	588	38	25	13	38	38	400
10	Kottayam	534	68	83	22	46	62	429
11	Alappuzha	683	34	53	46	61	102	313
12	Pathanamthitta	561	154	79	24	34	427	285
13	Kollam	657	119	90	21	15	125	297
14	Thiruvananthapuram	676	48	69	26	17	80	308
		627	76	75	22	30	109	342

Table 4.17

NRE Deposits in Kerala

Year	Deposits (Rs. in lakhs)		%
	Total	NRE	
1990	6659.56	1932.92	29.02
1991	7934.78	2316.60	29.19
1992	9786.75	3116.00	31.83
1993	12261.44	4599.39	37.51
1994	15138.34	6152.36	40.64
1995	17694.30	7043.71	39.80
1996	20418.96	8256.33	40.43
1997	23352.87	10178.09	43.58
1998	26572.06	12734.98	47.92
1999	31531.84	13328.53	42.27



59

